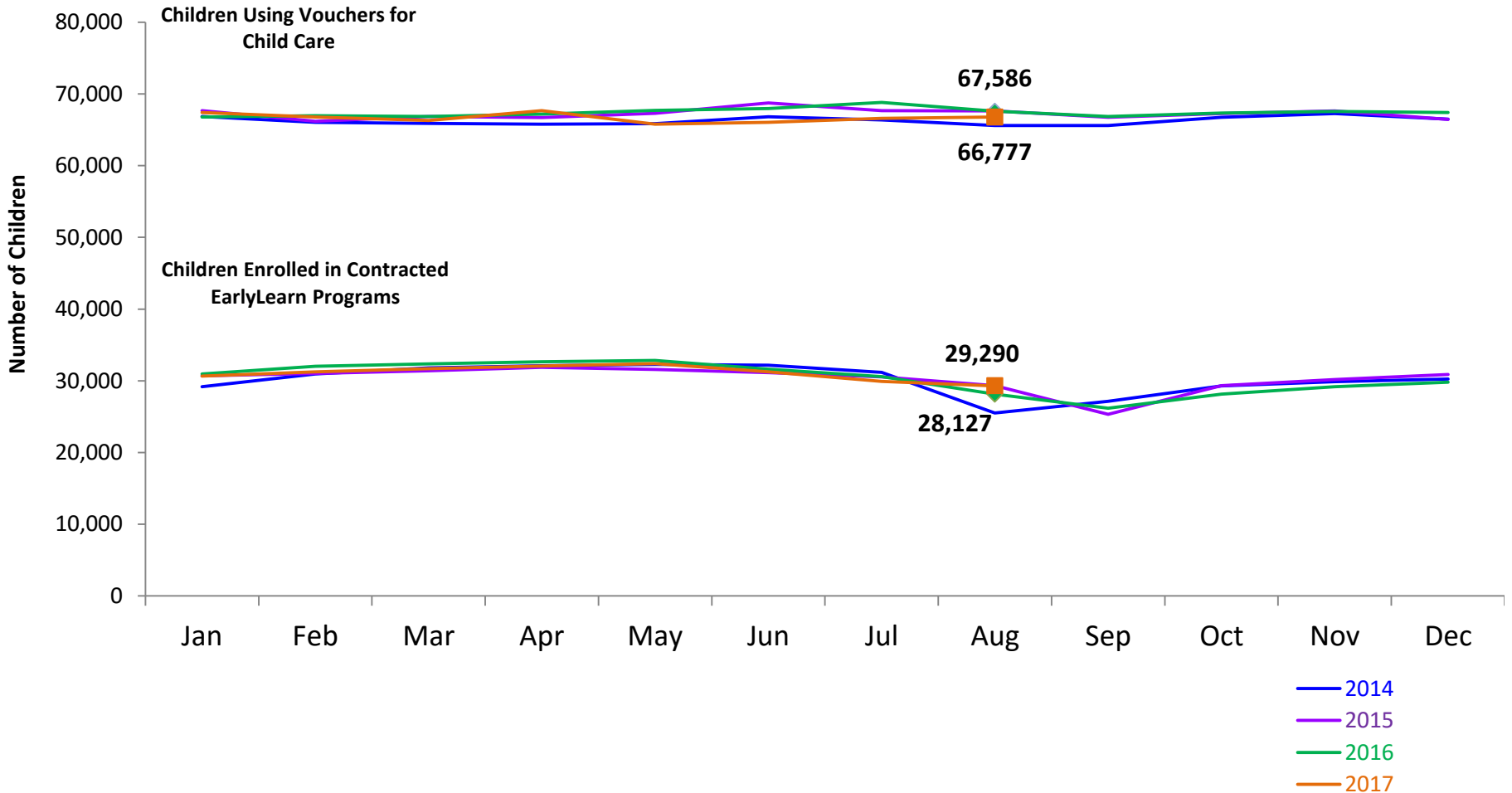




# Flash

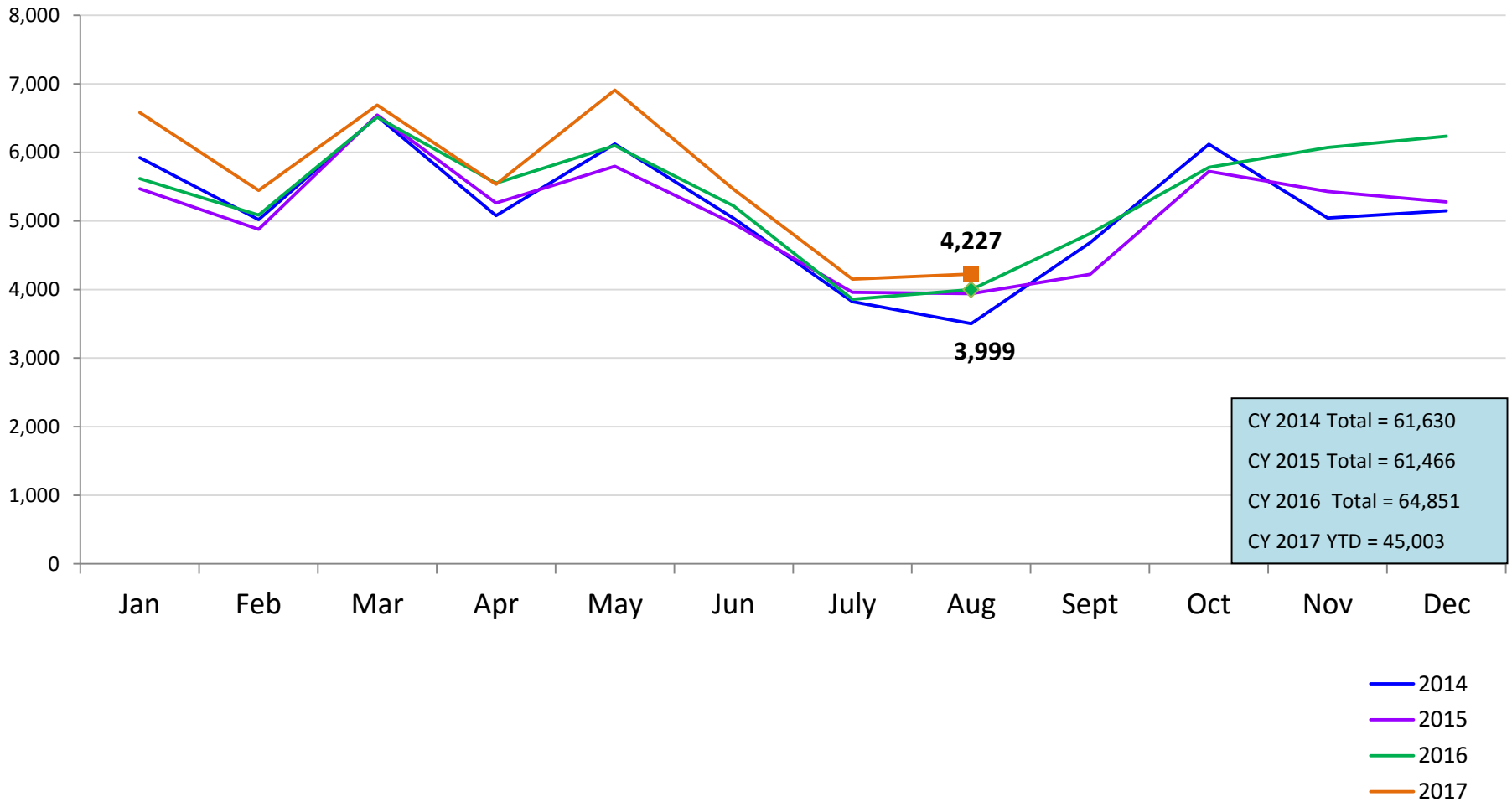
September 2017

## Children Enrolled in Contracted EarlyLearn Programs and Children Using Vouchers for Child Care January 2014 – August 2017(End of Month)



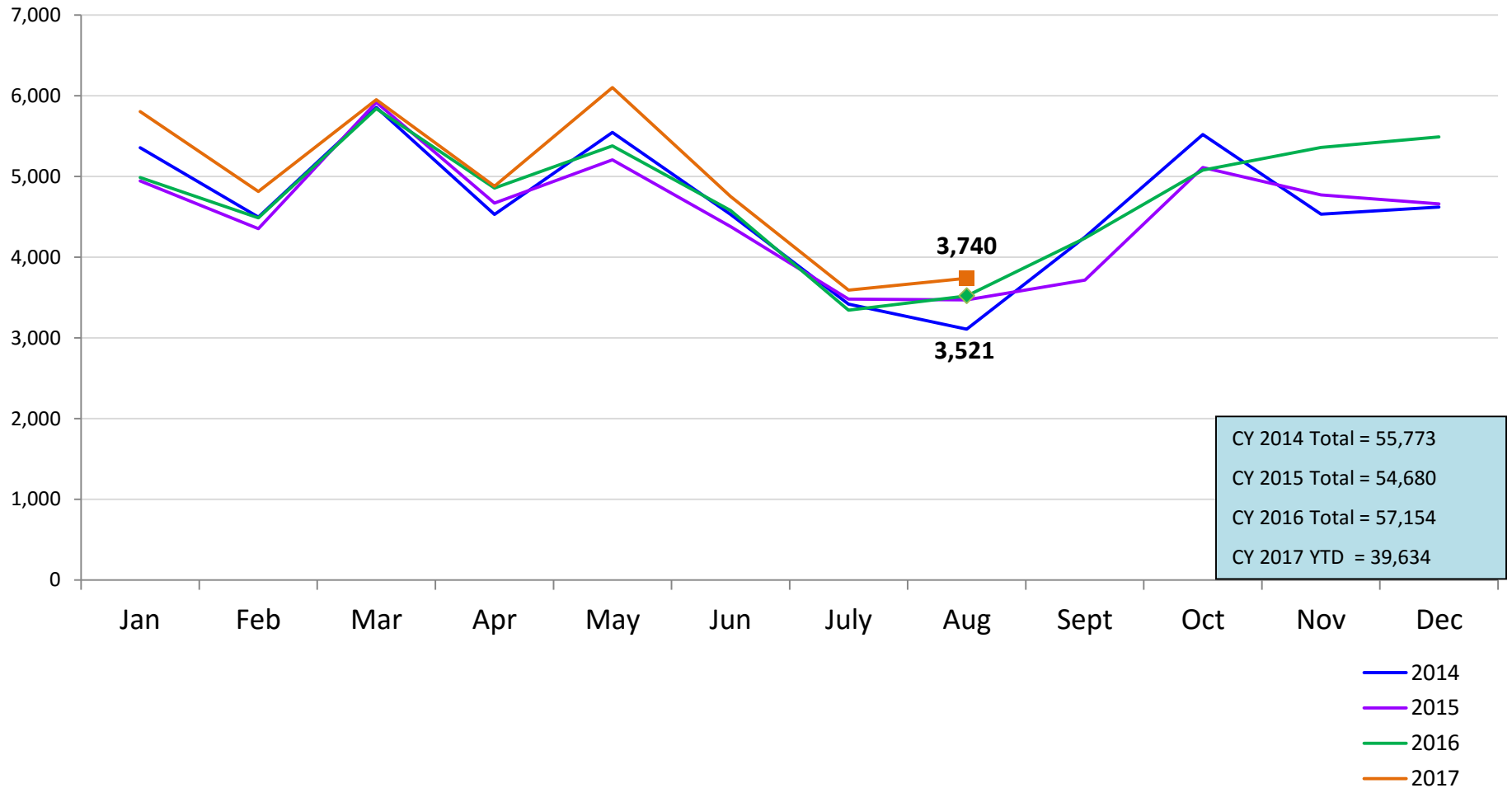
### SCR Intakes

January 2014 – August 2017 (Monthly Total)



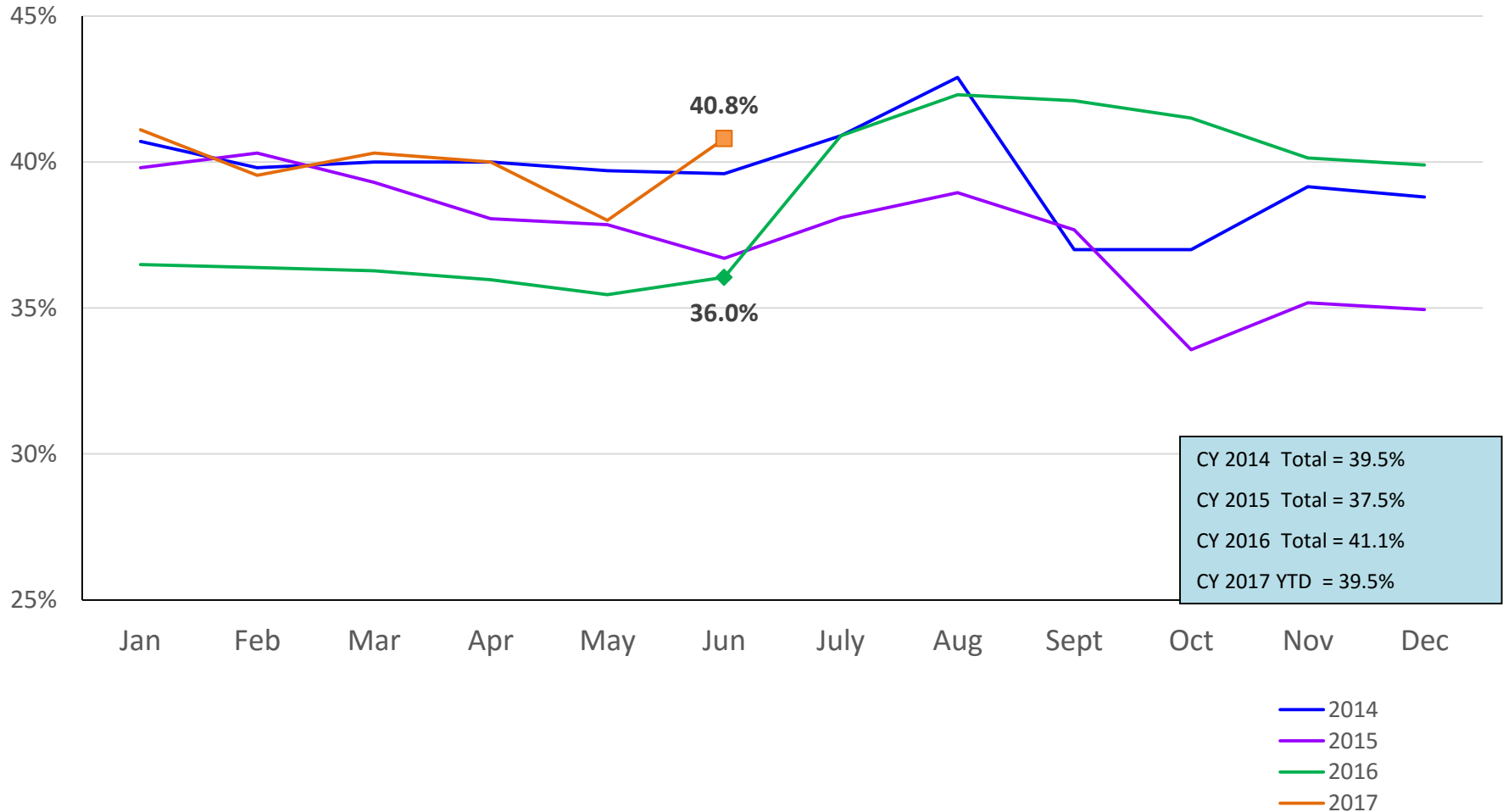
### SCR Consolidated Investigations

January 2014 – August 2017 (Monthly Total)



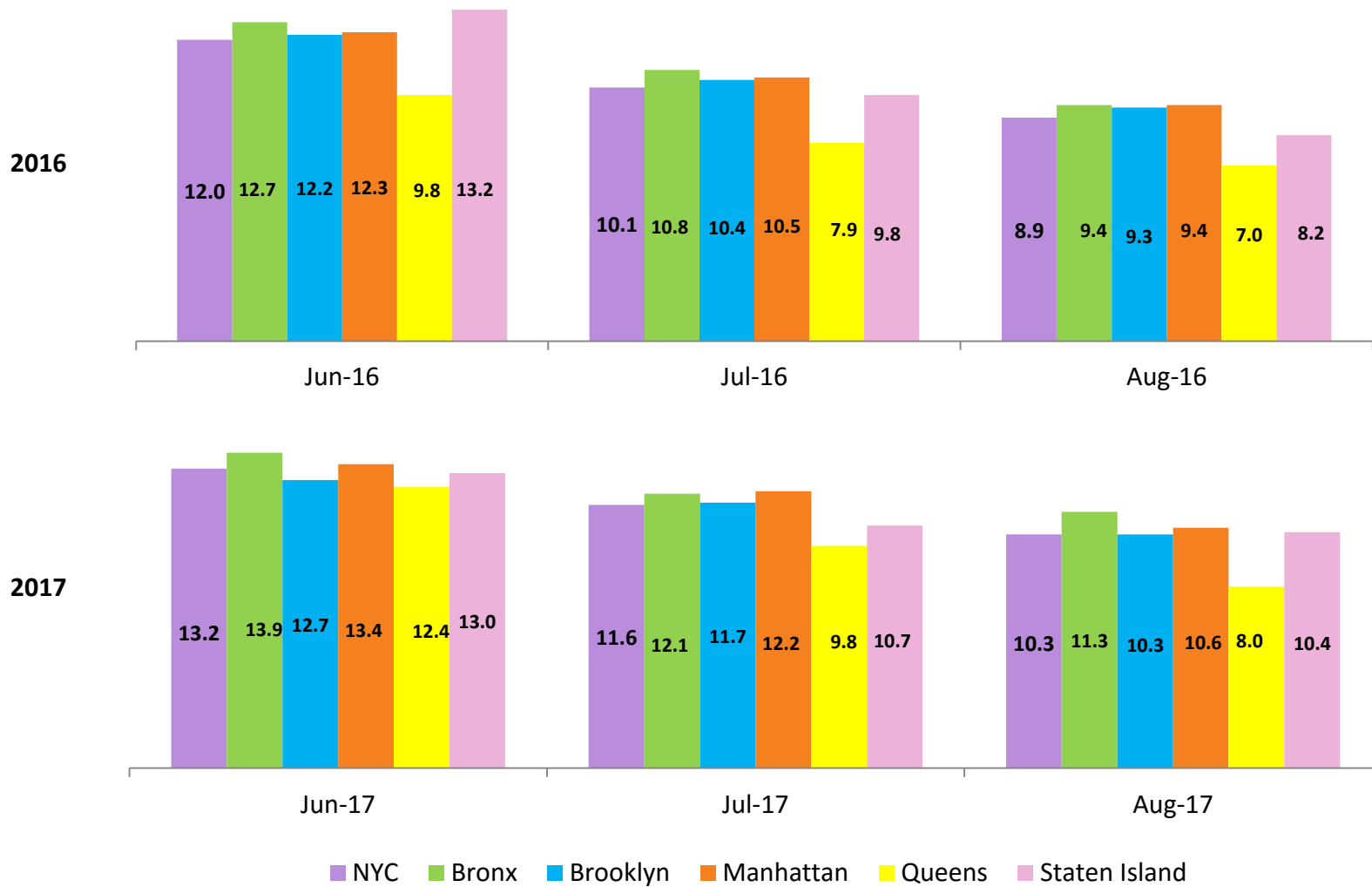
### SCR Investigation Indication Rate

January 2014 – June 2017



### Average P/D Combined Caseload\*

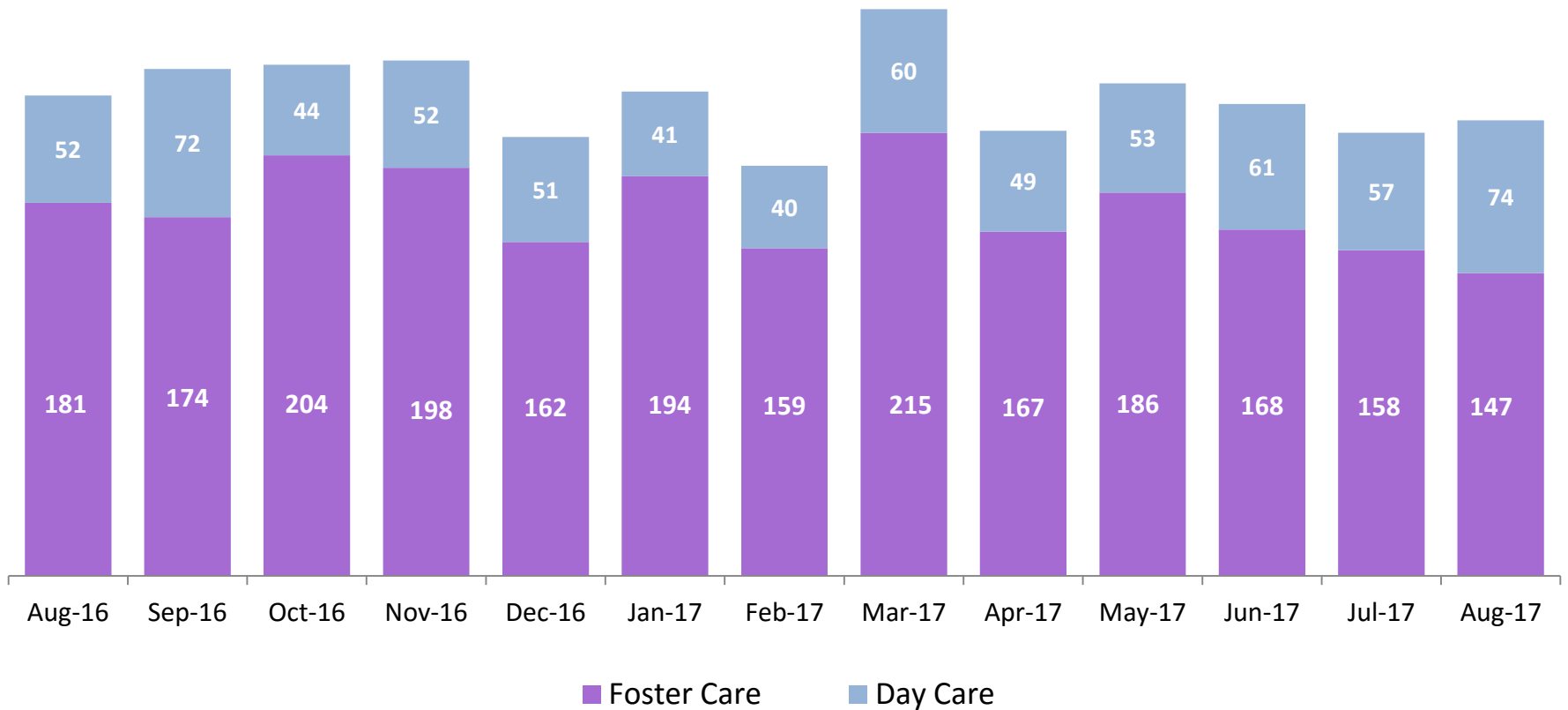
June – August 2016 & June – August 2017



\* Caseloads are of protective/diagnostic caseworkers only and exclude the caseloads carried by Level I and Level II Supervisors.

### OSI Investigations

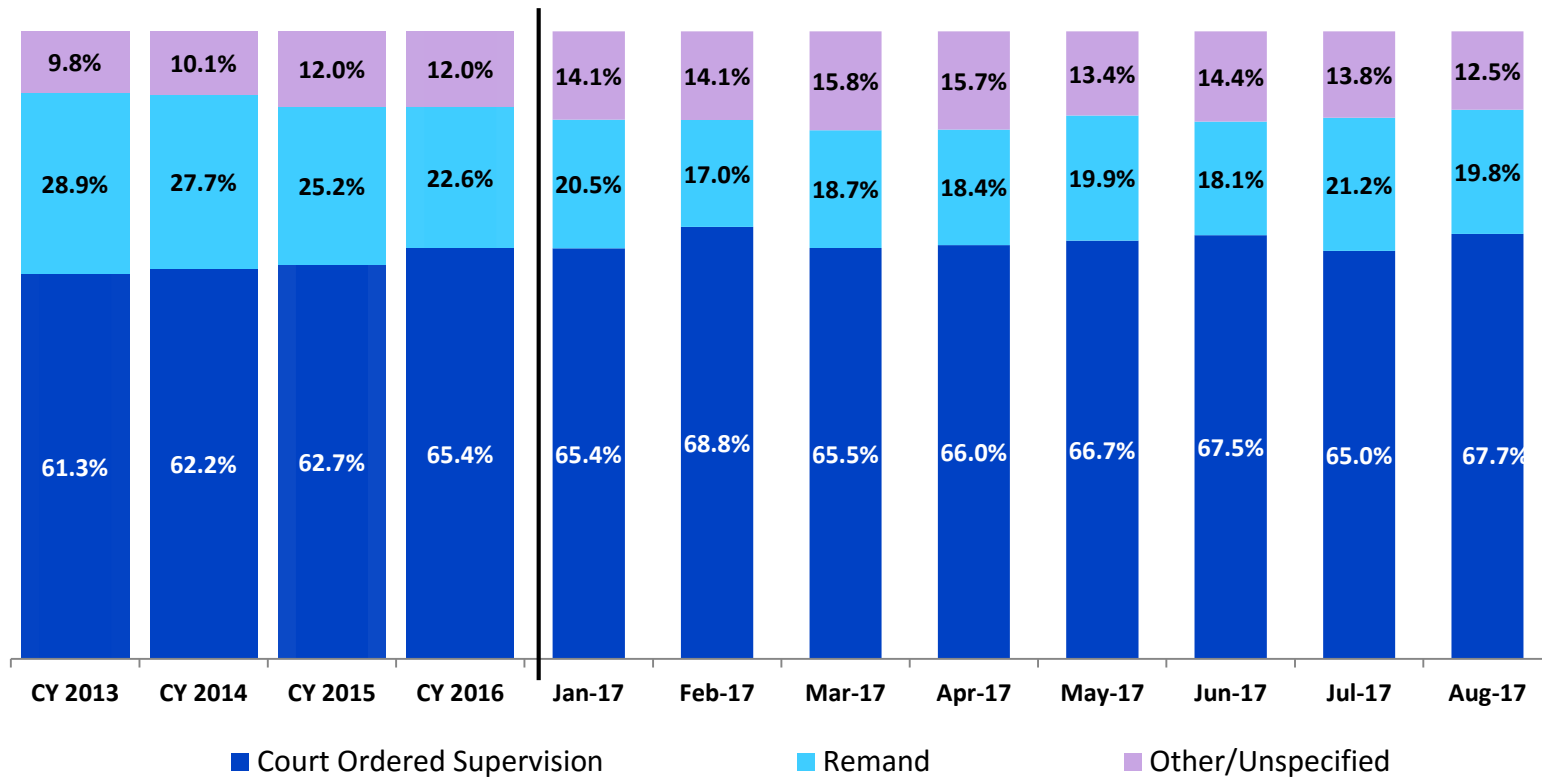
August 2016 – August 2017



	Aug 2016	Sep 2016	Oct 2016	Nov 2016	Dec 2016	Jan 2017	Feb 2017	Mar 2017	Apr 2017	May 2017	Jun 2017	Jul 2017	Aug 2017
Number of Investigations	233	246	248	250	213	235	199	275	216	239	229	215	221

### Article 10 Filings and Initial Hearing Outcomes, Children

CY 2013 – August 2017



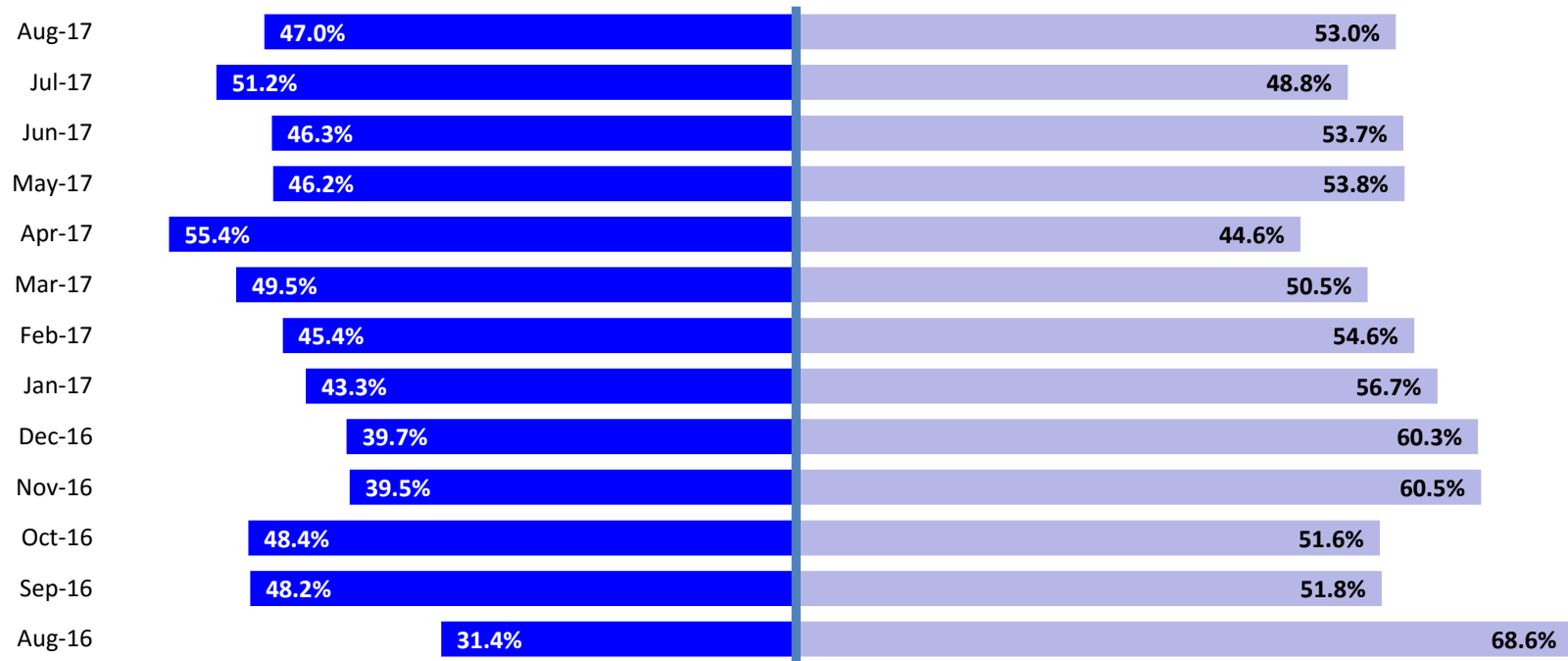
	CY 2013	CY 2014	CY 2015	CY 2016	Jan 2017	Feb 2017	Mar 2017	April 2017	May 2017	Jun 2017	Jul 2017	Aug 2017
Children with Article 10 Filings	9,318	9,900	10,243	11,453	1,354	1,139	1,553	1,307	1,533	1,500	1,336	1,429

Note: The category “Other/Unspecified” includes released with no supervision, no order issued and no outcome specified.



### Remands Approved at Initial Article 10 Hearing by Removal Status

August 2016 – August 2017

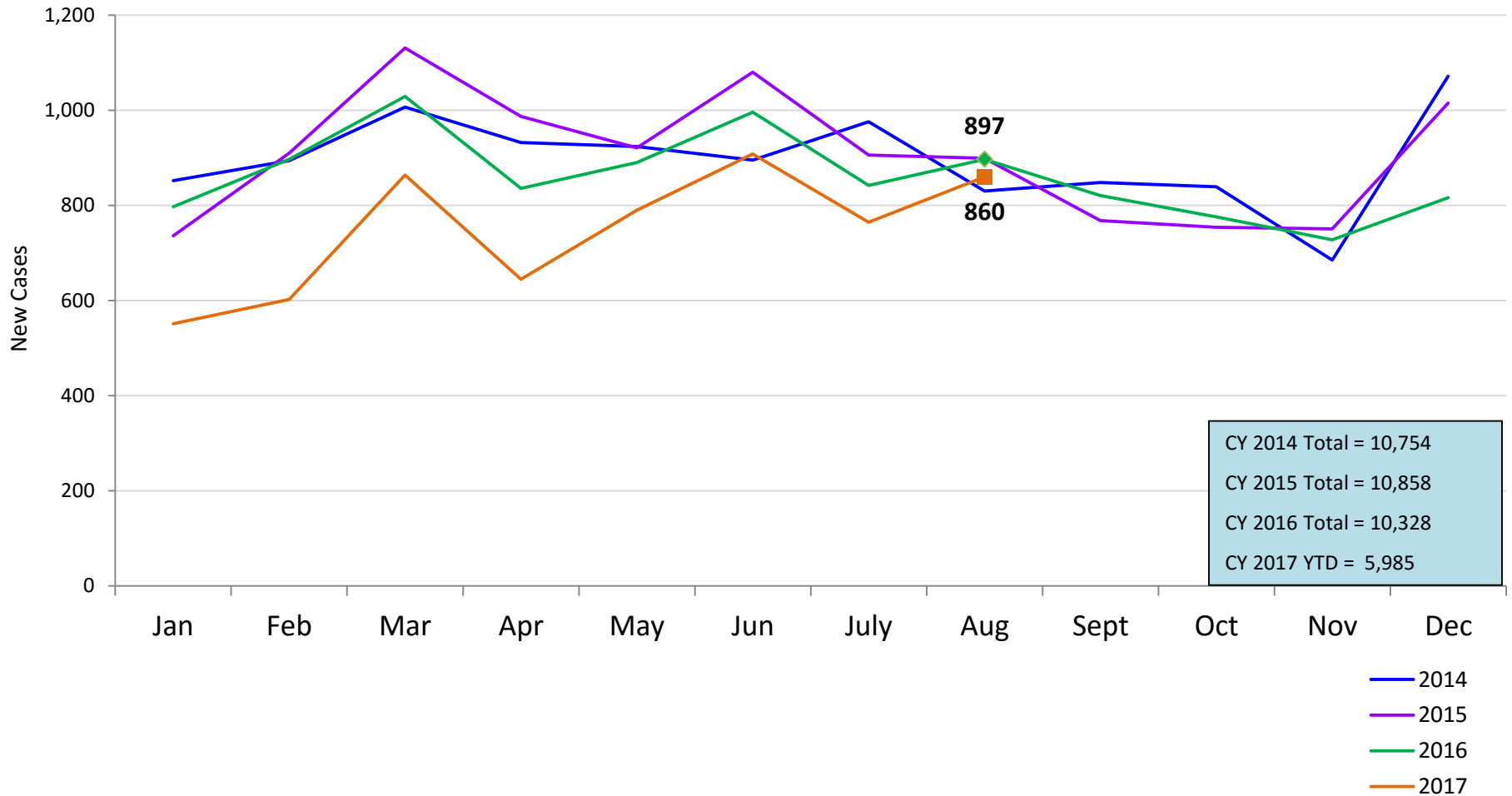


■ Pre-Filing Emergency Removals (court approved at initial hearing) ■ Post-Filing Removals (court ordered at initial hearing)

	Aug 2016	Sep 2016	Oct 2016	Nov 2016	Dec 2016	Jan 2017	Feb 2017	Mar 2017	Apr 2017	May 2017	Jun 2017	Jul 2017	Aug 2017
Children Removed	204	199	312	223	287	277	194	291	240	305	272	283	283

### New Child Welfare Preventive Cases\*

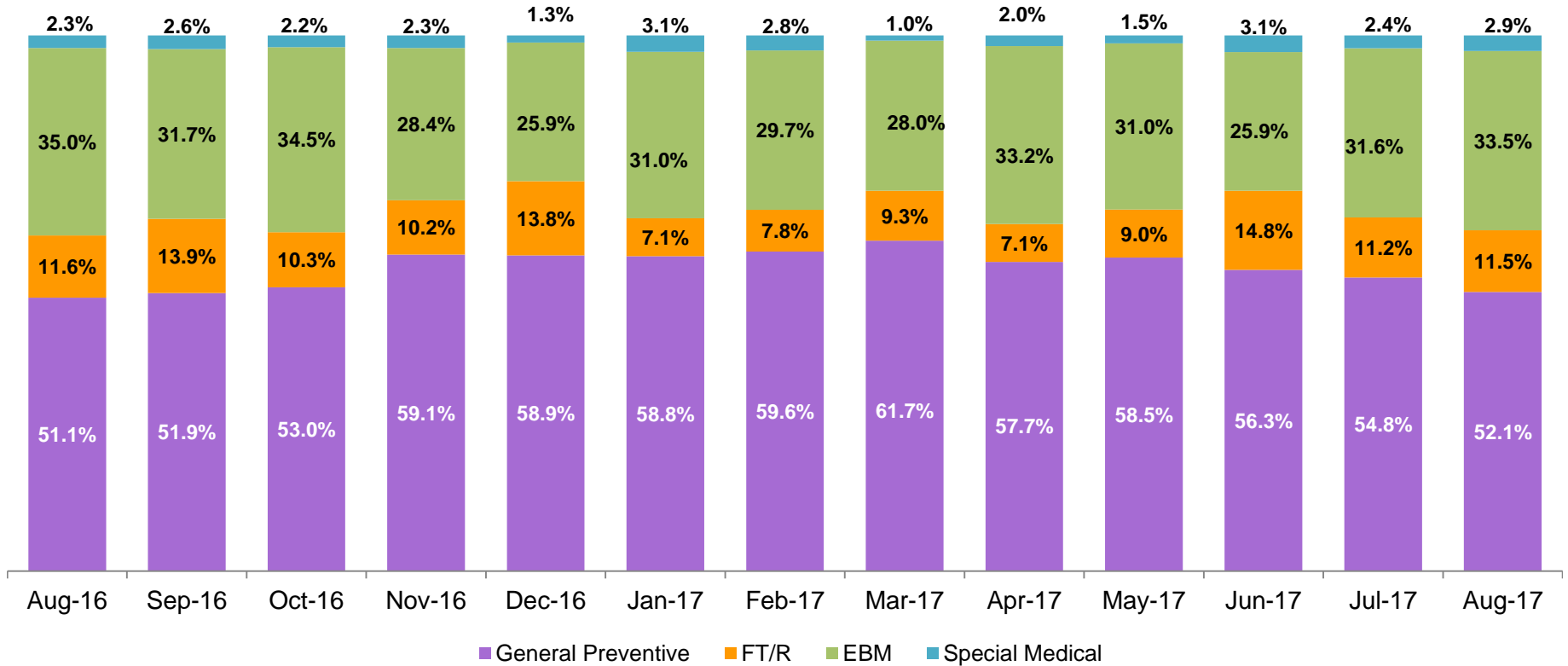
January 2014 – August 2017



\* New preventive cases do not include cases transferred from one preventive program to another. See Pages 33 and 34 of the Appendix for supporting data.

### New Child Welfare Preventive Cases by Program Type \*

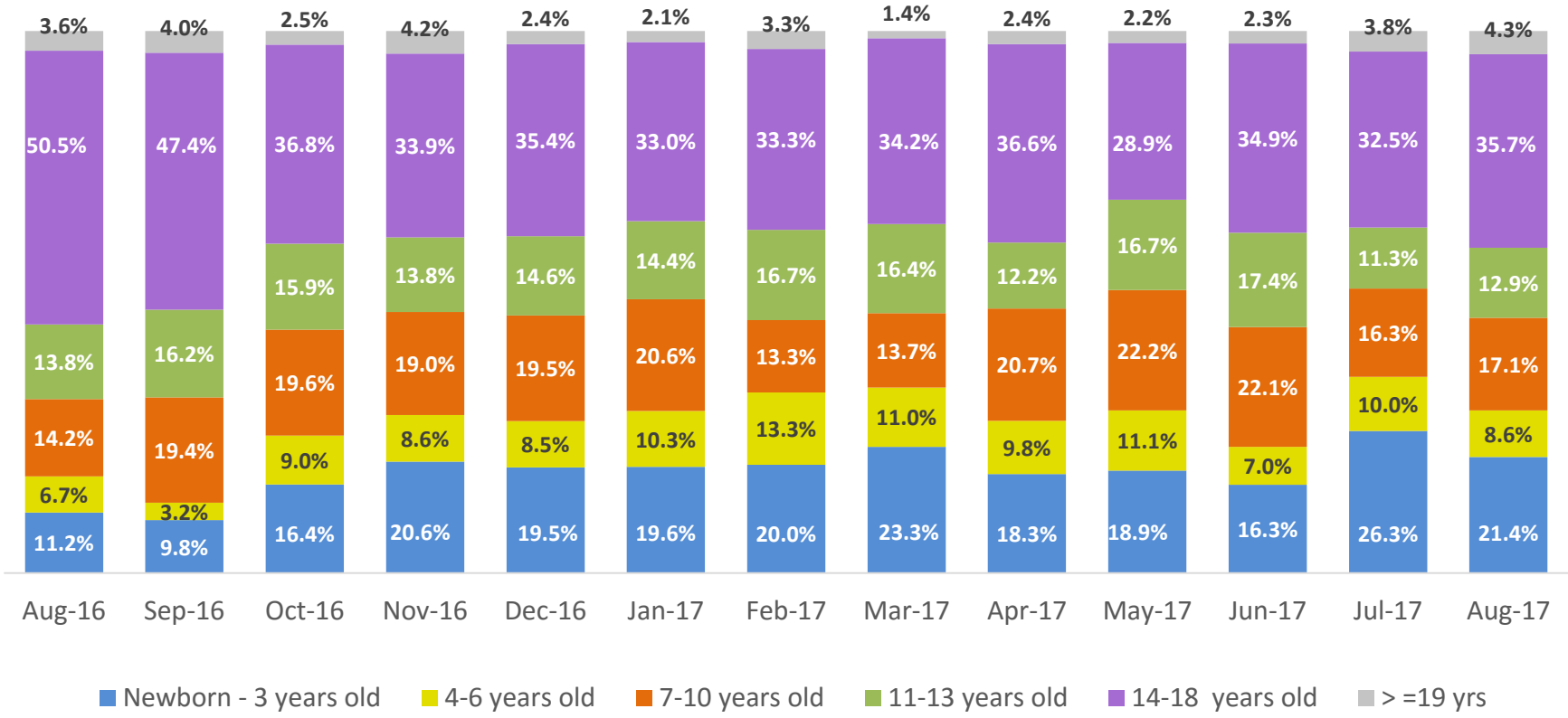
August 2016 – August 2017



	Aug 2016	Sep 2016	Oct 2016	Nov 2016	Dec 2016	Jan 2017	Feb 2017	Mar 2017	Apr 2017	May 2017	Jun 2017	Jul 2017	Aug 2017
Number of New Preventive Cases	897	821	776	728	816	551	602	864	645	790	908	765	860

\* New preventive cases exclude cases transferred from one preventive program to another.

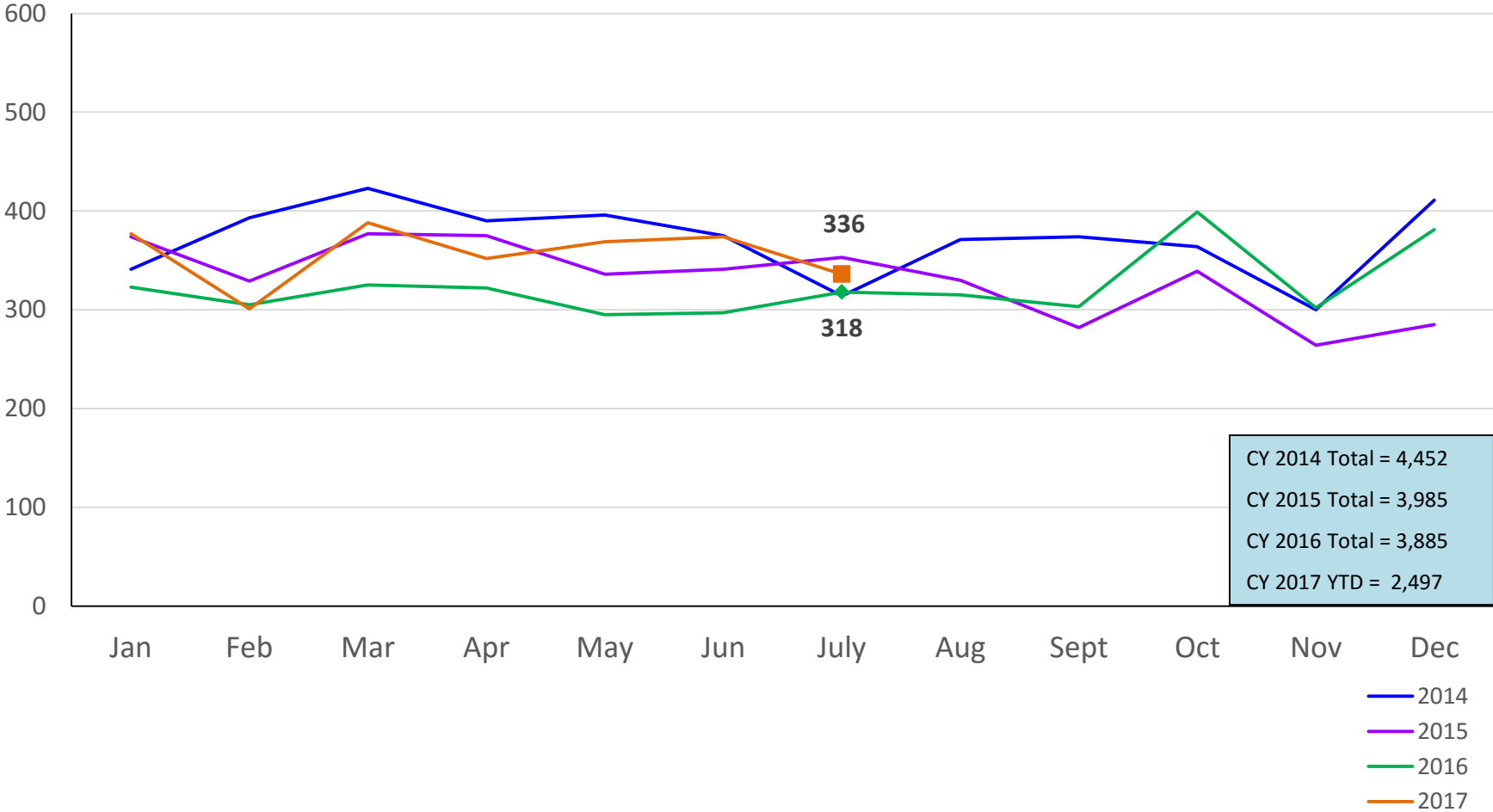
### Average Daily Children’s Center Population August 2016 – August 2017



	Aug 2016	Sep 2016	Oct 2016	Nov 2016	Dec 2016	Jan 2017	Feb 2017	Mar 2017	Apr 2017	May 2017	Jun 2017	Jul 2017	Aug 2017
Average Number of Children	56	54	71	62	82	97	60	73	82	90	86	80	70

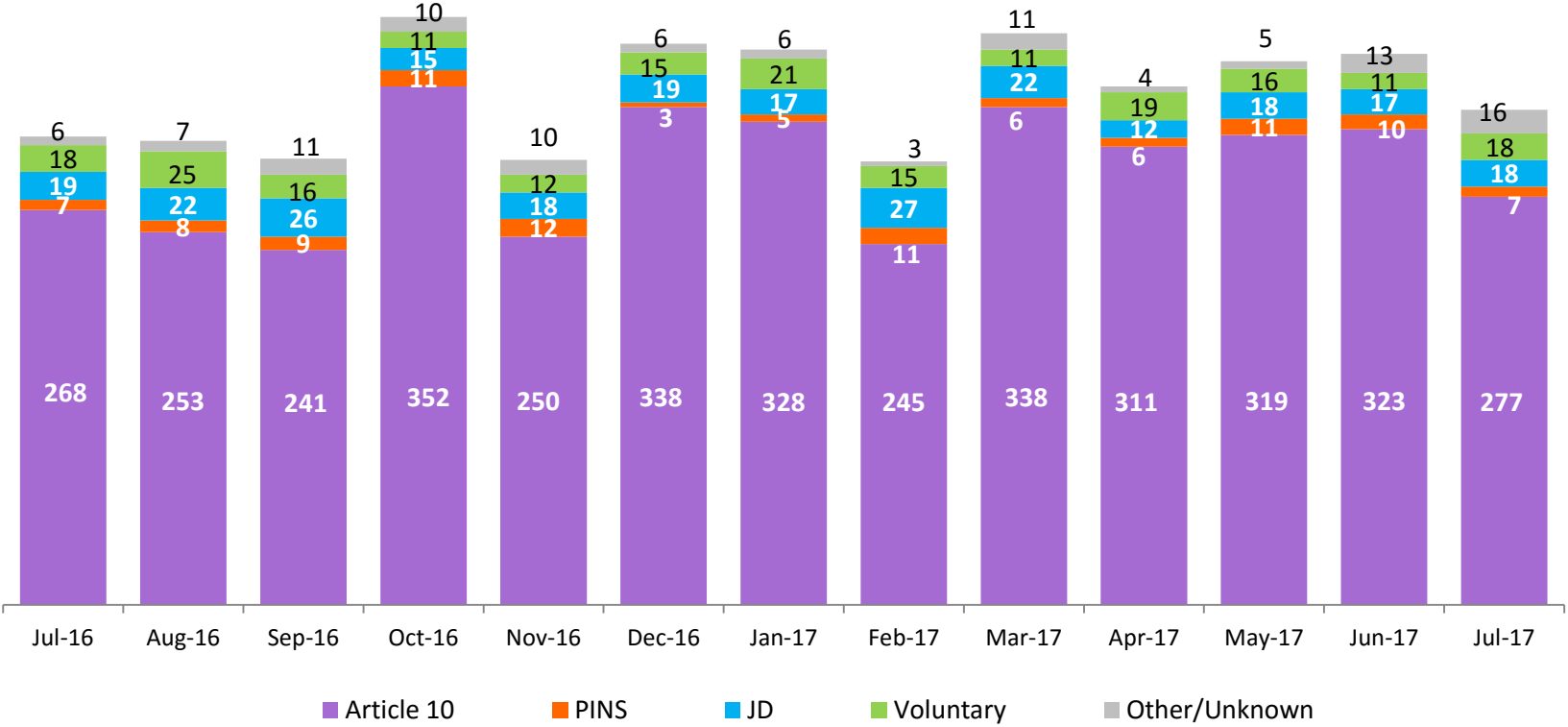
### New Monthly Placements of Children into Foster Care

January 2014 – July 2017



### Reason for New Placements of Children into Foster Care

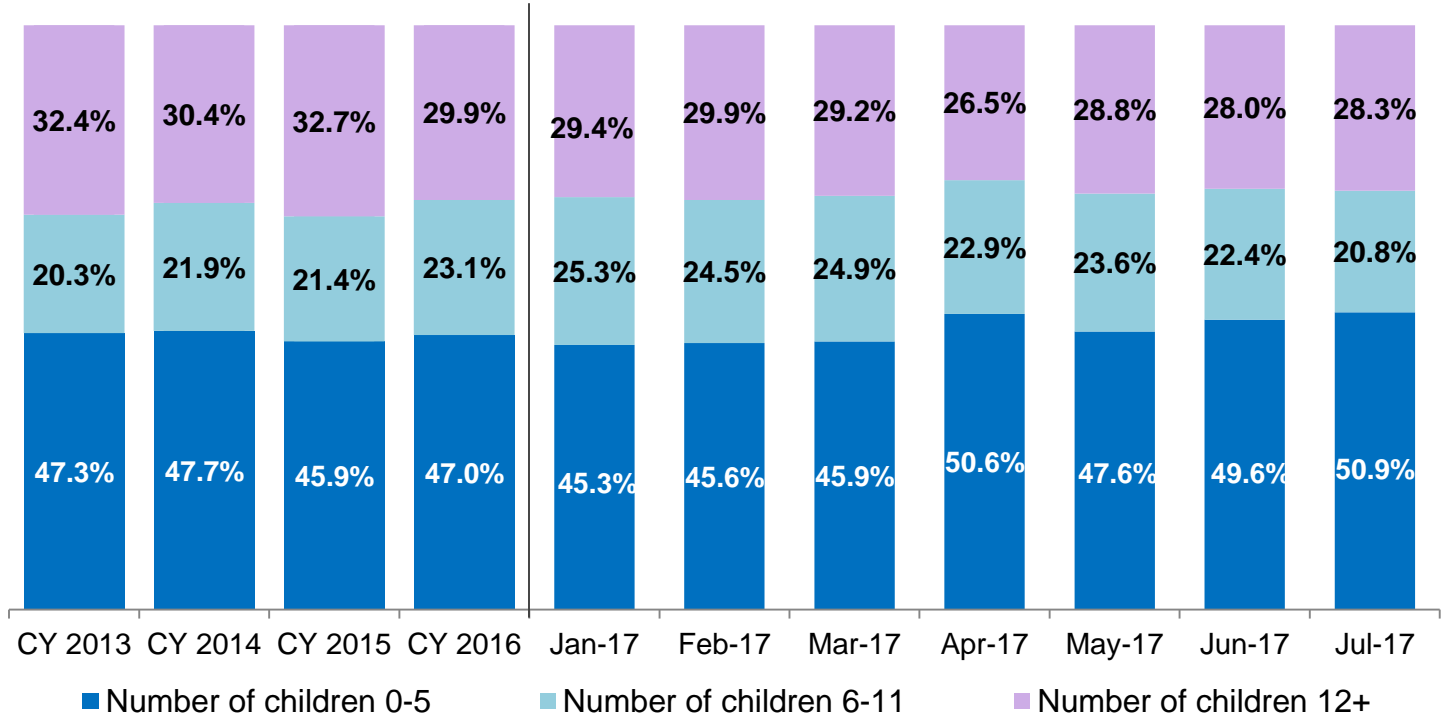
July 2016 – July 2017



	Jul 2016	Aug 2016	Sep 2016	Oct 2016	Nov 2016	Dec 2016	Jan 2017	Feb 2017	Mar 2017	Apr 2017	May 2017	Jun 2017	Jul 2017
Number of Placements	318	315	303	399	302	381	377	301	388	352	369	374	336

### New Placements of Children into Foster Care\* by Age

CY 2013 - July 2017

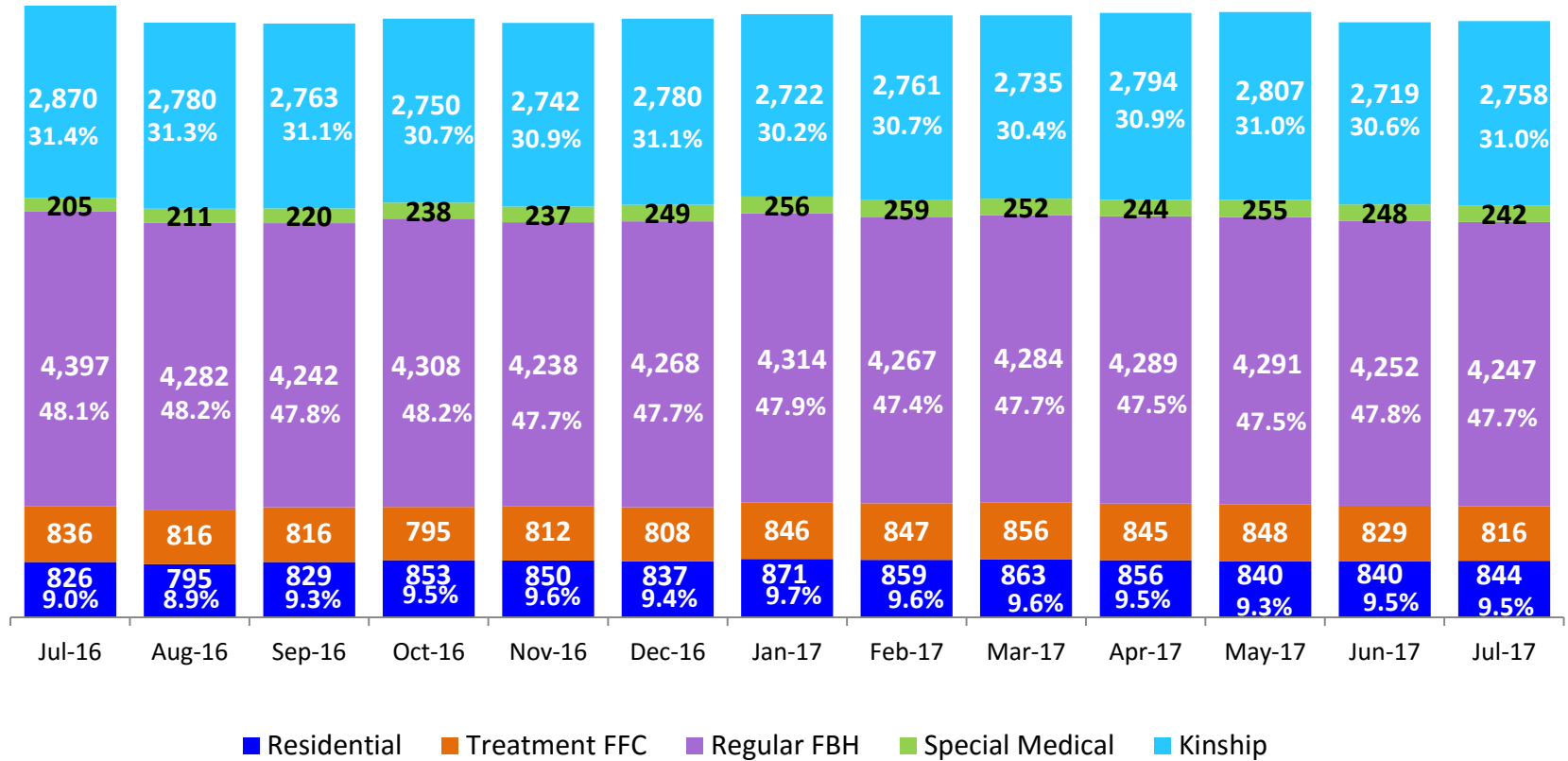


	CY 2013	CY 2014	CY 2015	CY 2016	Jan 2017	Feb 2017	Mar 2017	Apr 2017	May 2017	Jun 2017	Jul 2017
Number of Placements	4,283	4,160	3,760	3,647	360	274	366	340	351	357	318

\*Excludes CTH placements.

### Children in Foster Care \*

July 2016 – July 2017 (end of month)



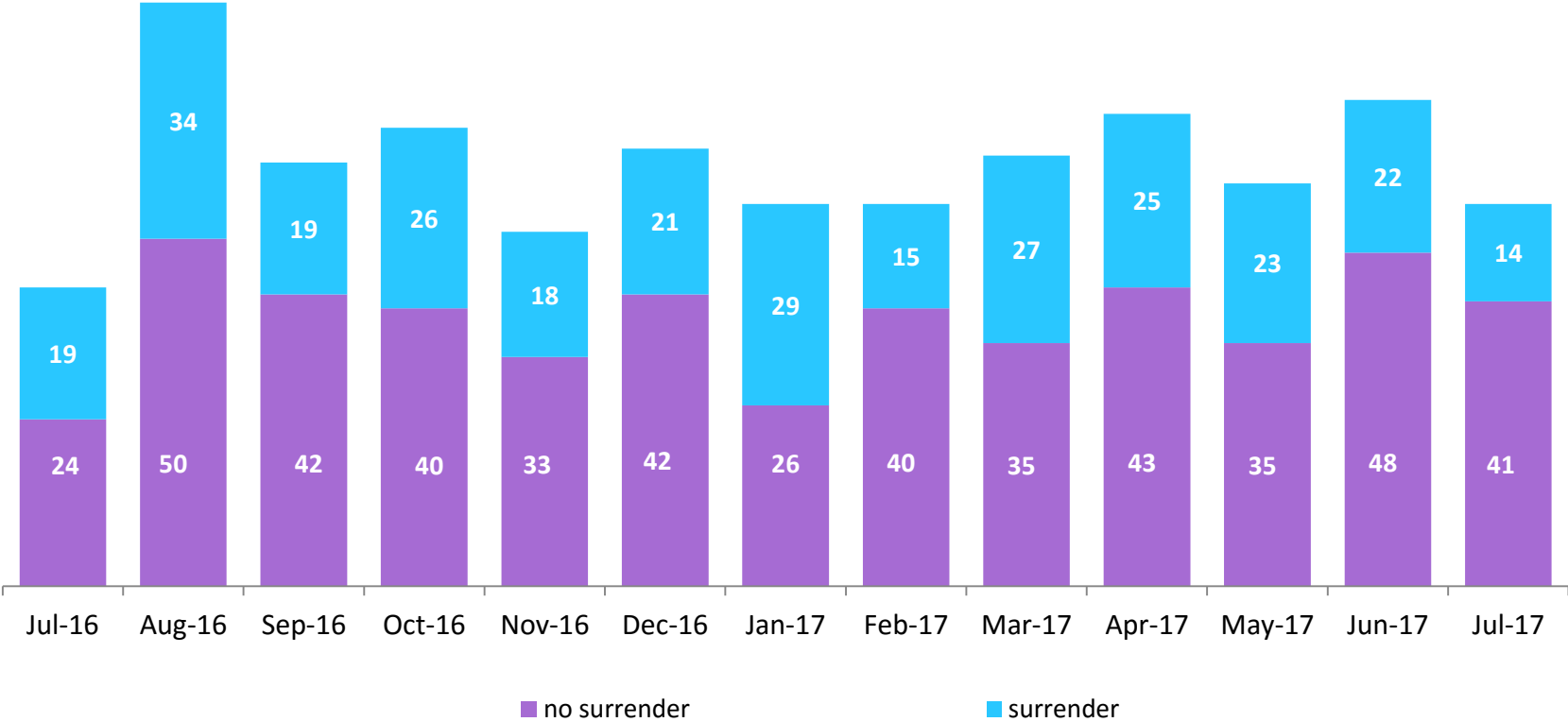
	Jul 2016	Aug 2016	Sep 2016	Oct 2016	Nov 2016	Dec 2016	Jan 2017	Feb 2017	Mar 2017	Apr 2017	May 2017	Jun 2017	Jul 2017
Number in Foster Care	9,134	8,884	8,870	8,944	8,879	8,942	9,009	8,993	8,990	9,028	9,041	8,888	8,907

\*Excludes CTH placements and includes children in 24 hour care and approximately 200 young children who are living in foster homes or residential care facilities with their mothers who are in foster care (8D children).



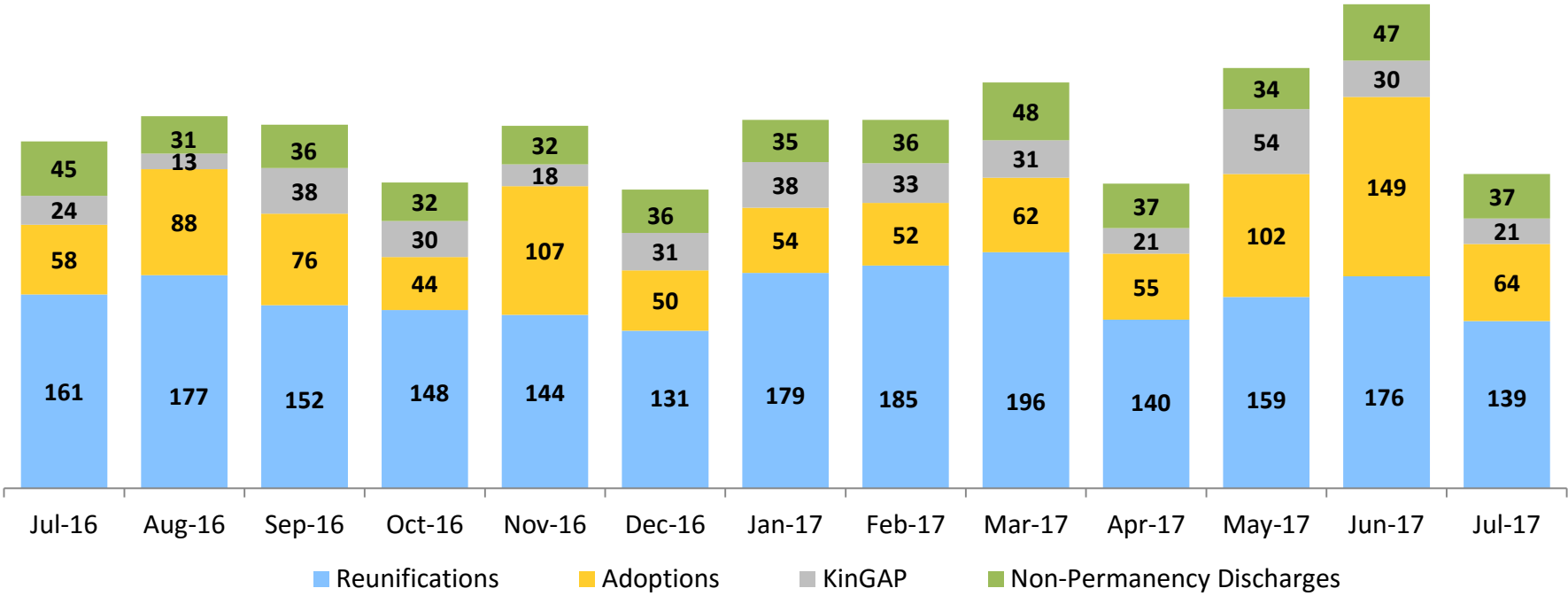
### Children Freed for Adoption, Surrender by at Least One Parent

July 2016 – July 2017



	Jul 2016	Aug 2016	Sep 2016	Oct 2016	Nov 2016	Dec 2016	Jan 2017	Feb 2017	Mar 2017	Apr 2017	May 2017	Jun 2017	Jul 2017
Number Freed for Adoption	43	81	61	66	51	63	55	55	62	68	58	70	55

**Permanency and Non-Permanency\* Discharges from Foster Care\*\***  
 July 2016 – July 2017

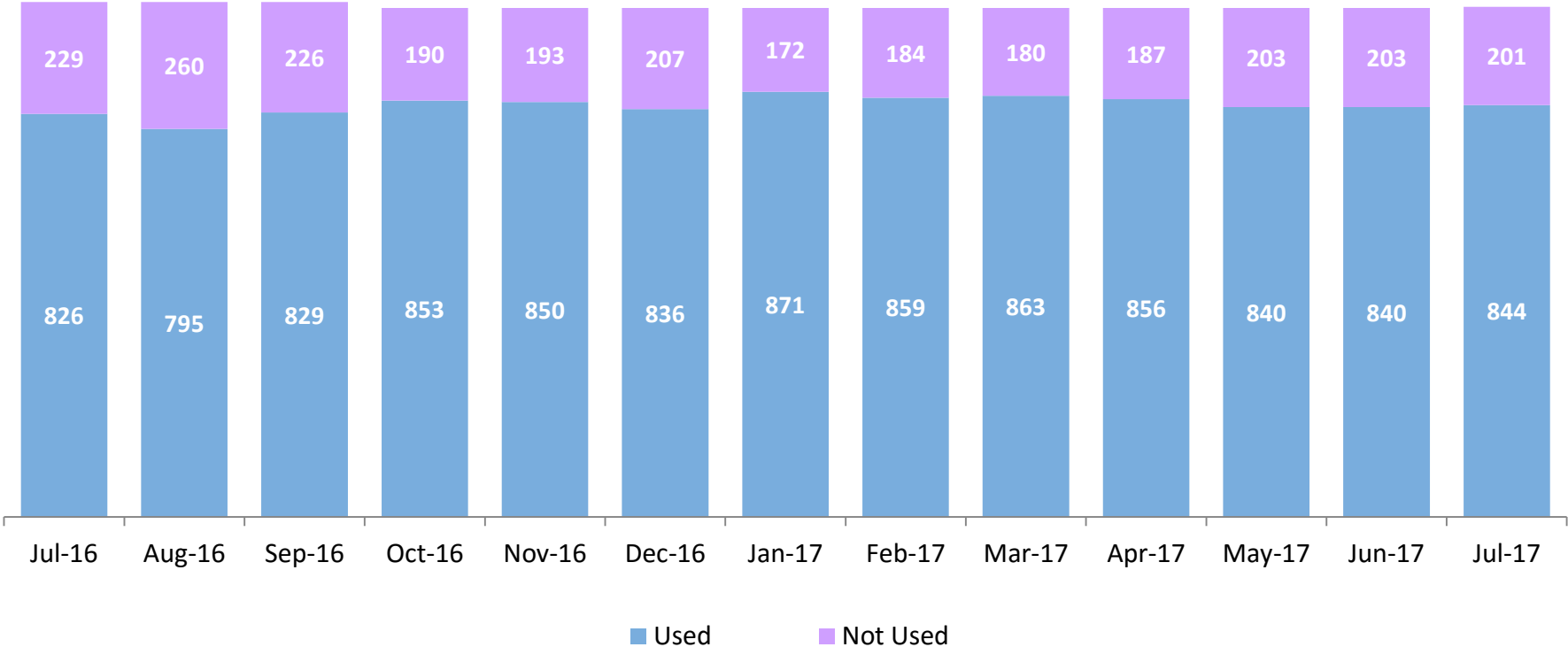


	Jul 2016	Aug 2016	Sep 2016	Oct 2016	Nov 2016	Dec 2016	Jan 2017	Feb 2017	Mar 2017	Apr 2017	May 2017	Jun 2017	Jul 2017
Number of Discharges	288	309	302	254	301	248	306	306	337	253	349	402	261

\*Non-permanency discharges include AWOL, APPLA , other discharge destinations such as psychiatric institutions and correctional facilities and discharges with unspecified destinations.

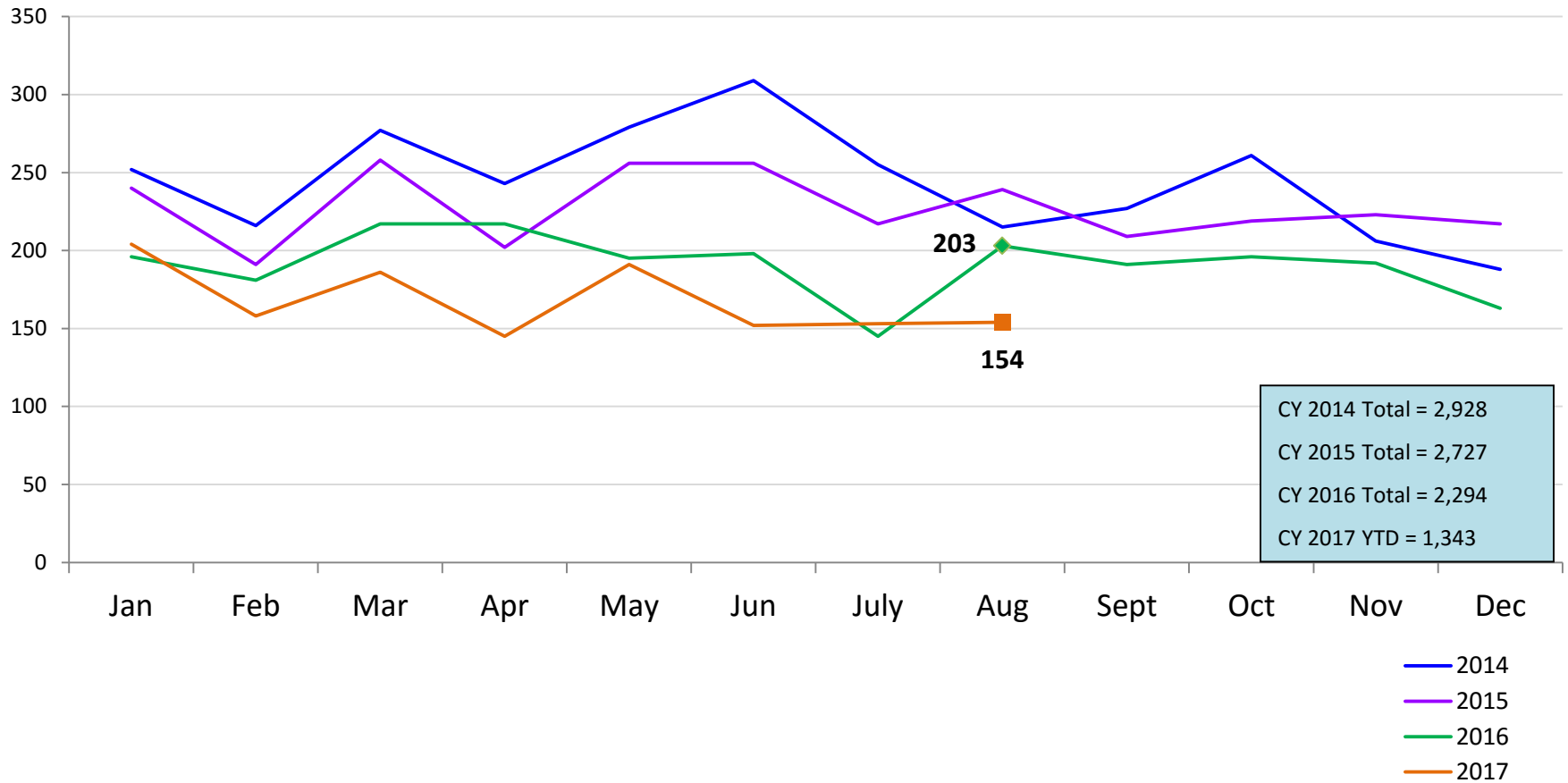
\*\*Excludes discharges of youth who entered care in CTH.

### Residential Care Capacity and Utilization July 2016 – July 2017



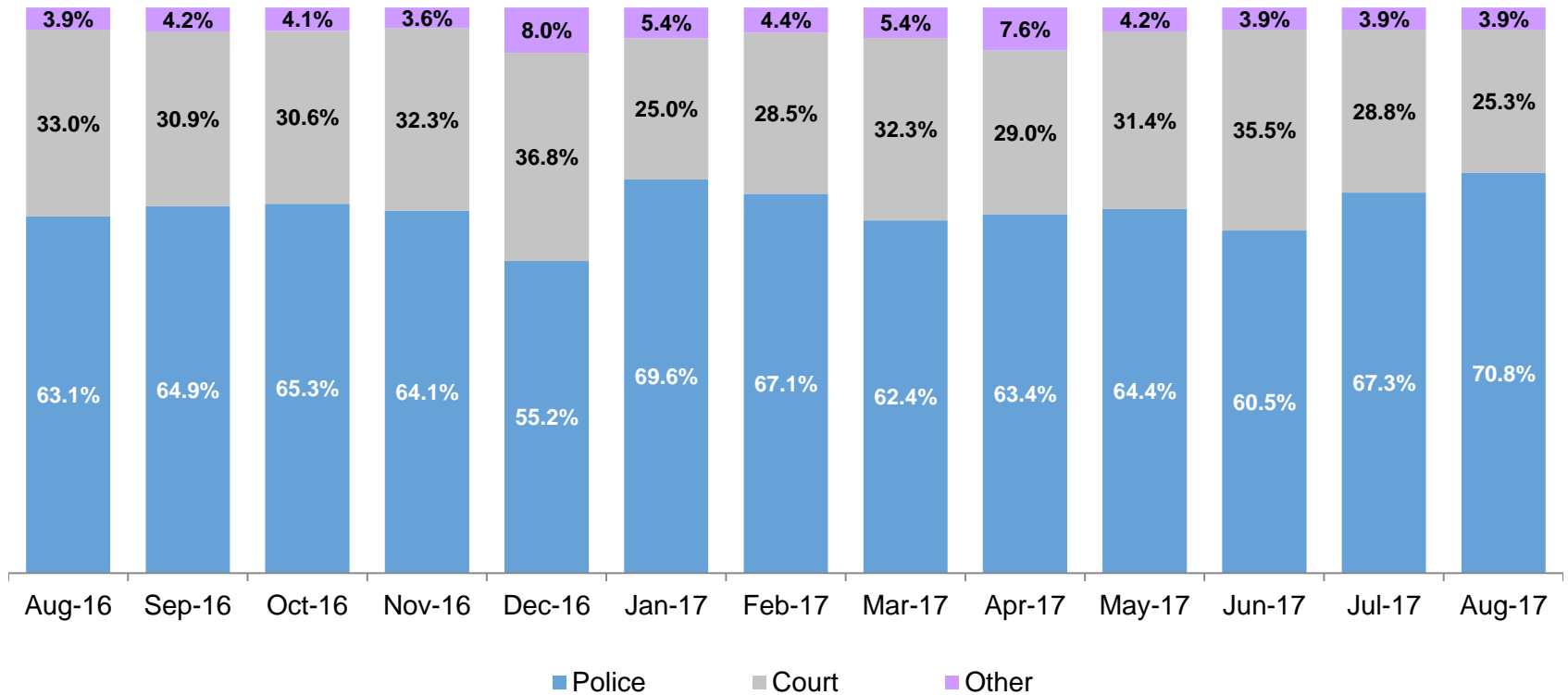
	Jul 2016	Aug 2016	Sep 2016	Oct 2016	Nov 2016	Dec 2016	Jan 2017	Feb 2017	Mar 2017	Apr 2017	May 2017	Jun 2017	Jul 2017
Capacity	1,055	1,055	1,055	1,043	1,043	1,043	1,043	1,043	1,043	1,043	1,043	1,043	1,045

### Total Monthly Admissions to Detention January 2014 – August 2017 (Monthly Total)



### Admit Authority, Detention Admissions

August 2016 – August 2017 (Monthly Total)

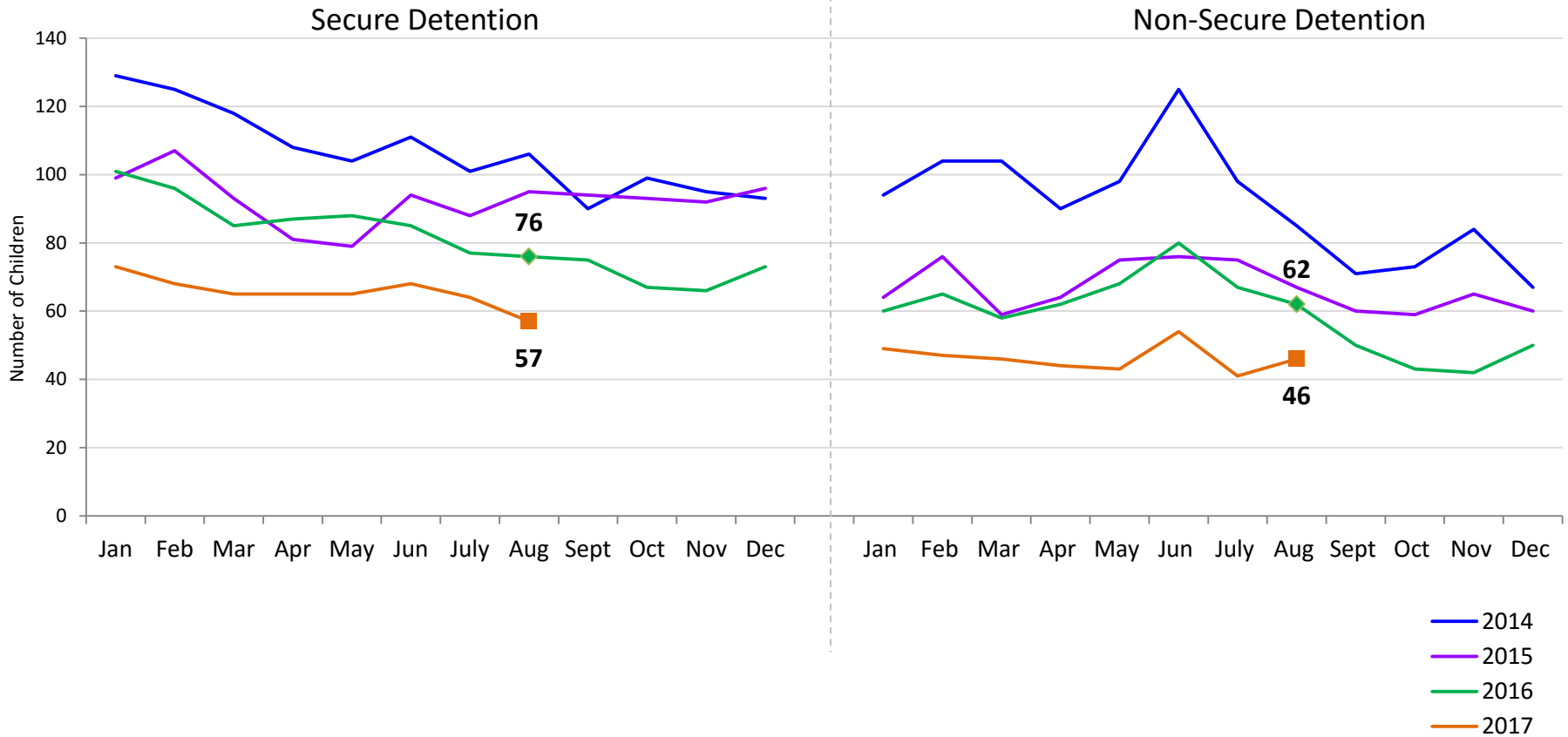


	Aug-16	Sep-16	Oct-16	Nov-16	Dec-16	Jan-17	Feb-17	Mar-17	Apr-17	May-17	Jun-17	Jul-17	Aug-17
Number of Admissions	203	191	196	192	163	204	158	186	145	191	152	153	154

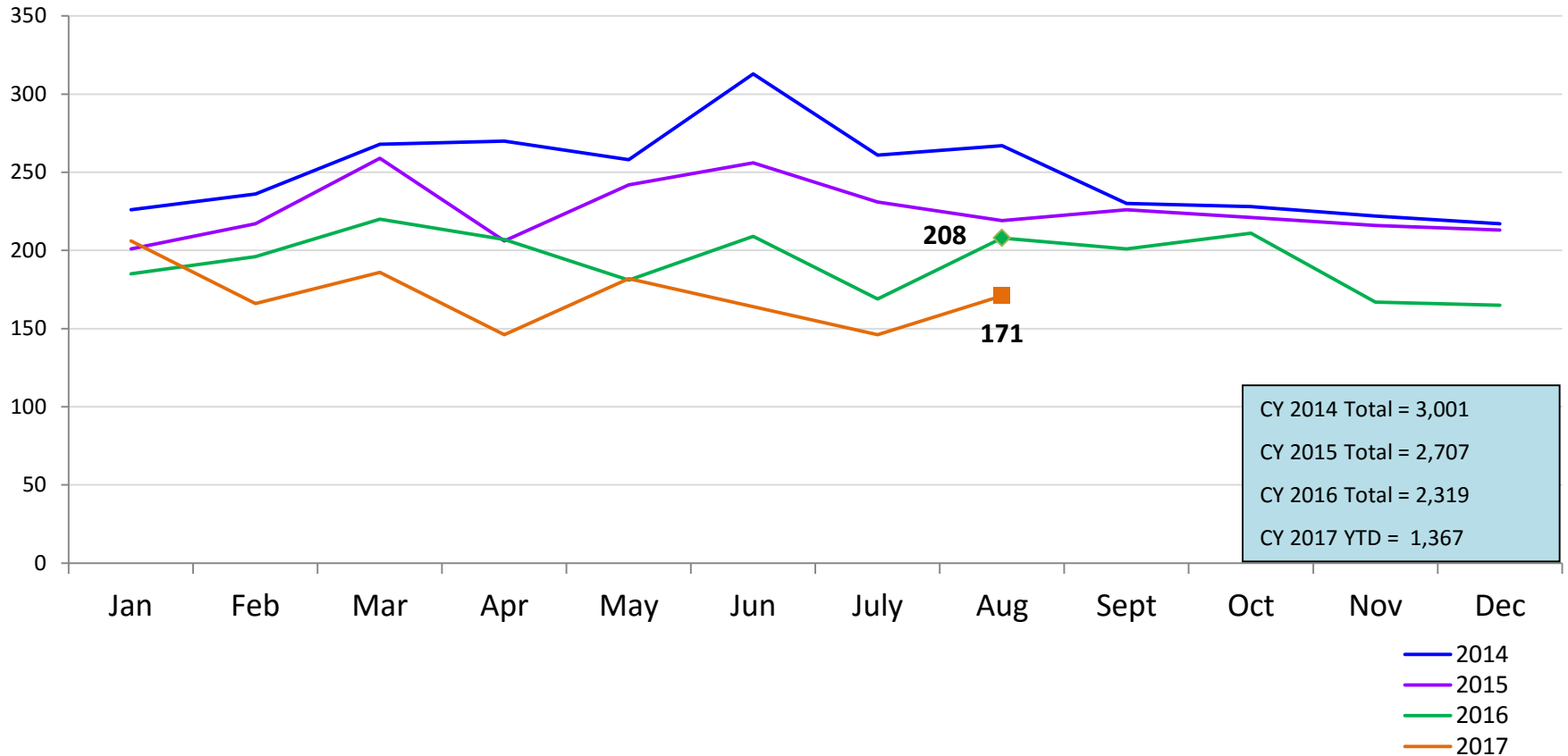
Note: Other Admit Authority includes the Sheriff Department, Department of Corrections and ACS.

### Monthly Average Daily Population

January 2014 – August 2017

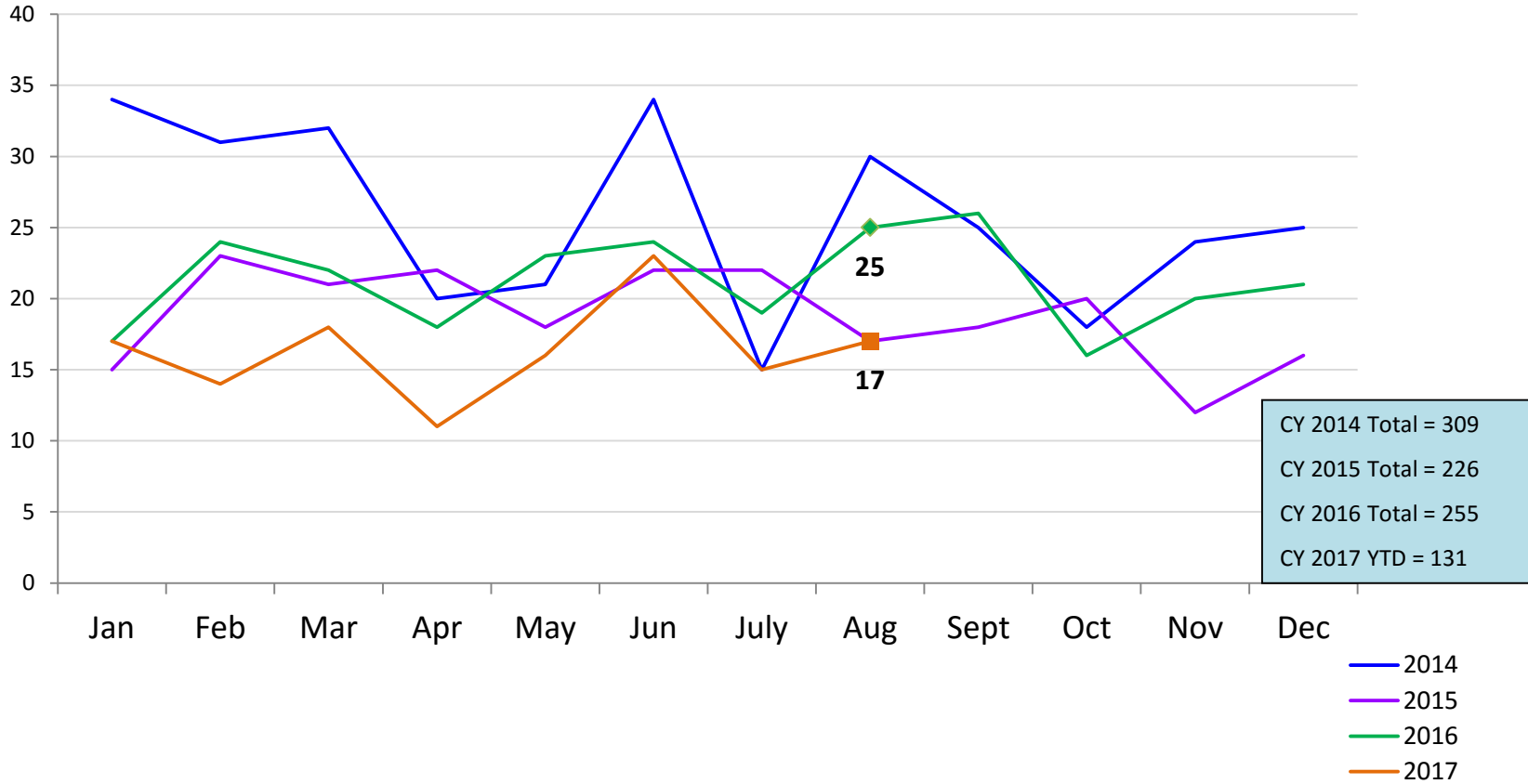


### Total Monthly Releases from Detention January 2014 – August 2017 (Monthly Total)



### Close to Home Admissions\*

January 2014 – August 2017 (Monthly Total)

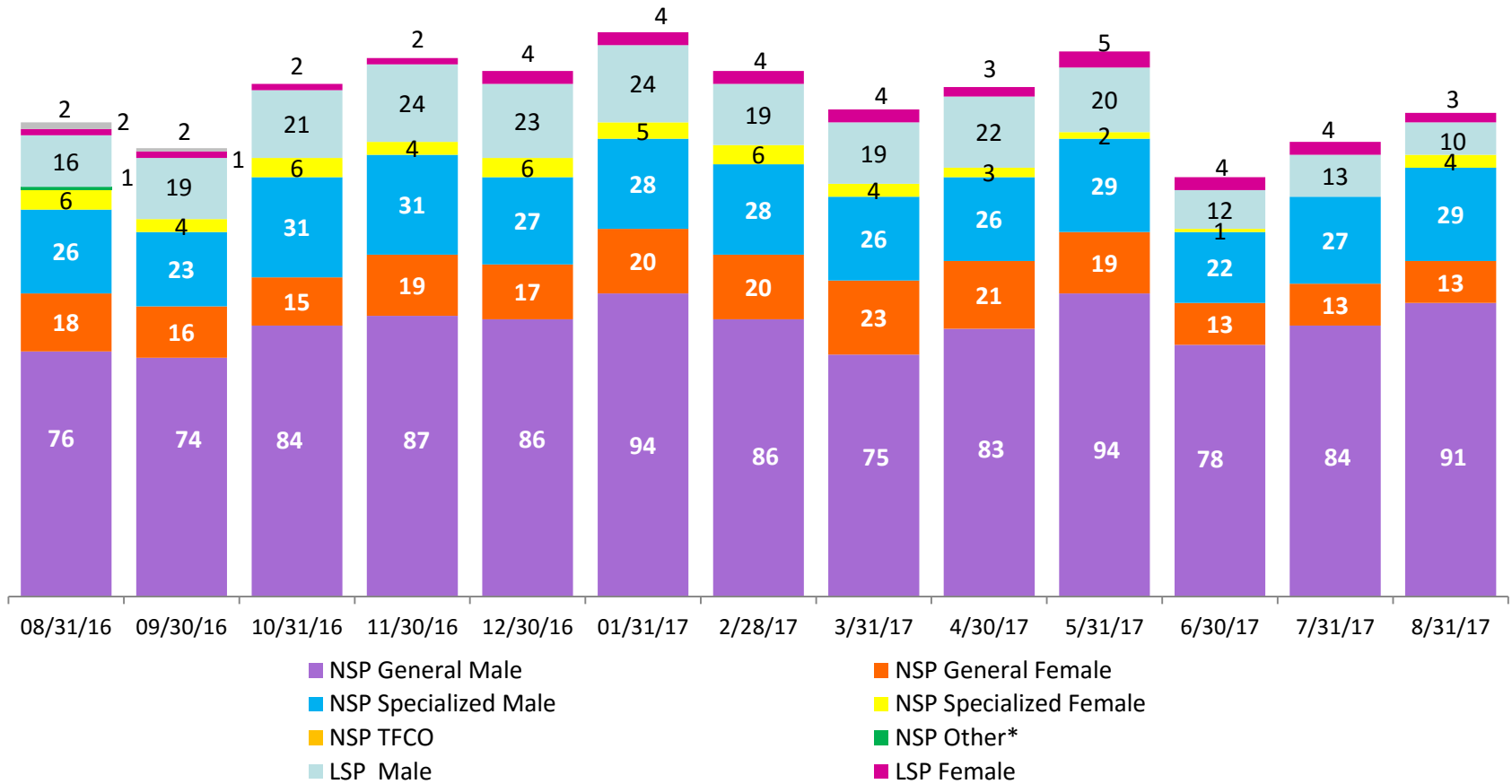


\*Beginning in December 2015 Close to Home admissions include LSP as well as NSP.



CTH Placement, in 24-hour Care

August 2016 – August 2017 (end of month)

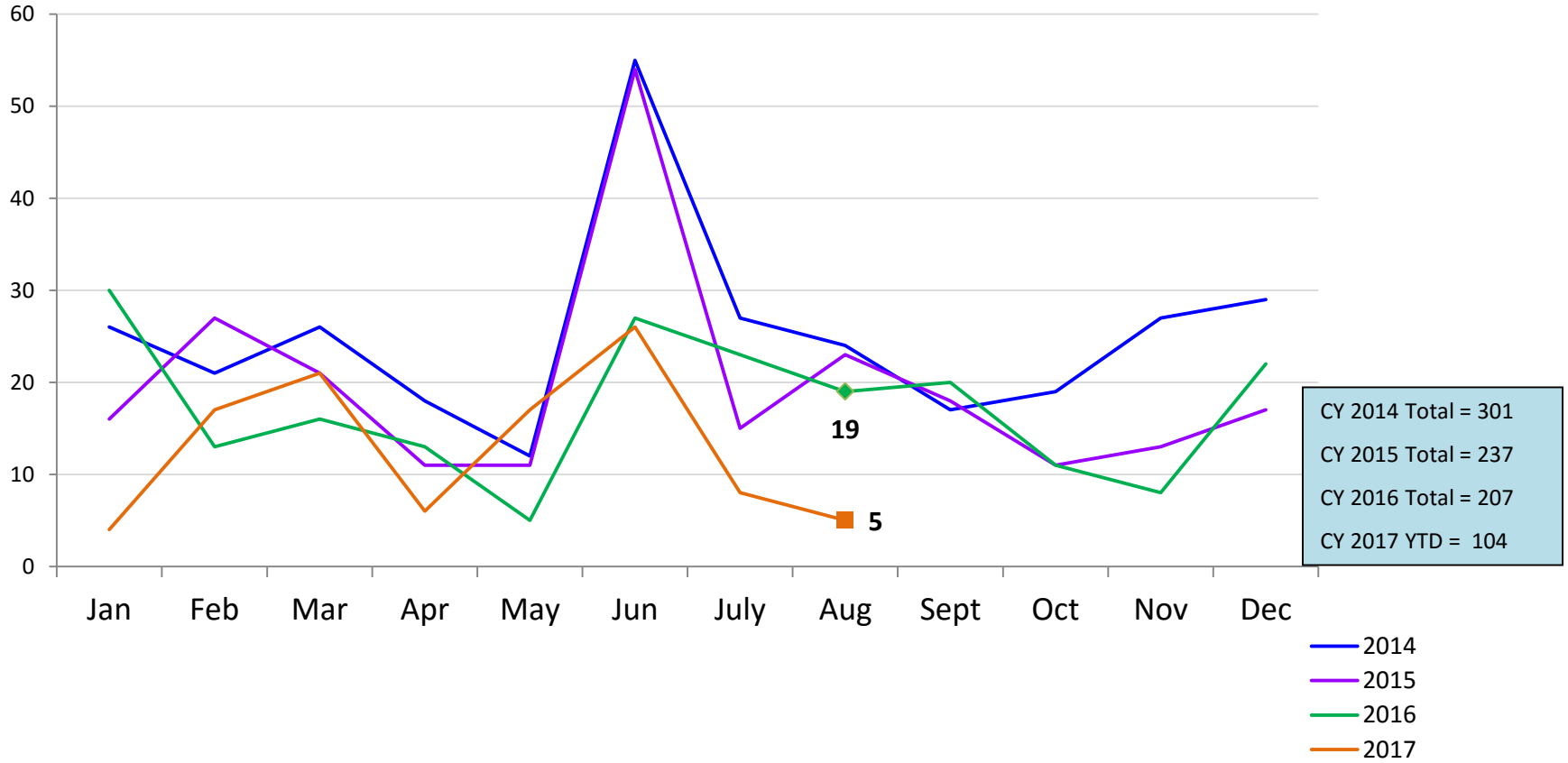


Number in Placement													
	8/31/16	9/30/16	10/31/16	11/30/16	12/30/16	1/31/17	2/28/17	3/31/17	4/30/17	5/31/17	6/30/17	7/31/17	8/31/17
NSP	127	117	136	141	136	147	140	128	133	144	114	124	137
LSP	20	22	23	26	27	28	23	23	25	25	16	17	13

\*NSP Other includes youth in child welfare and mother/child placements.

### Releases from Close to Home Placement to Aftercare

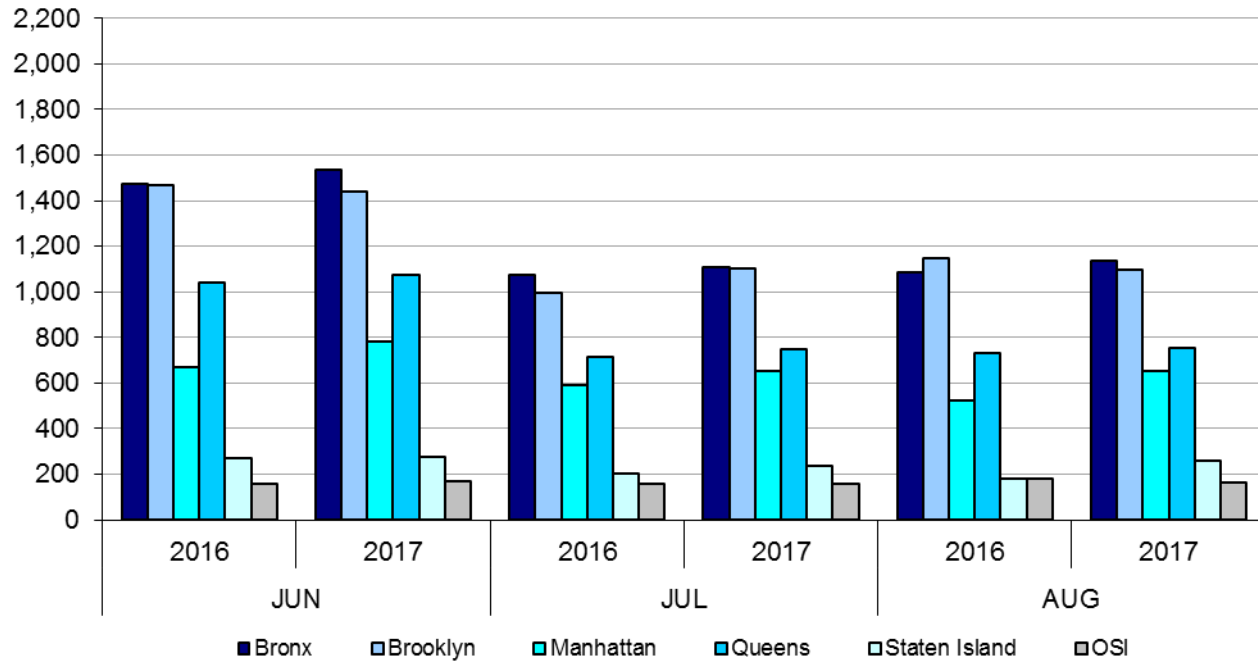
January 2014 – August 2017 (Monthly Total)



# Appendix

Figure 1: SCR Intakes by Borough, JUN 16 - AUG 16 and JUN 17 - AUG 17

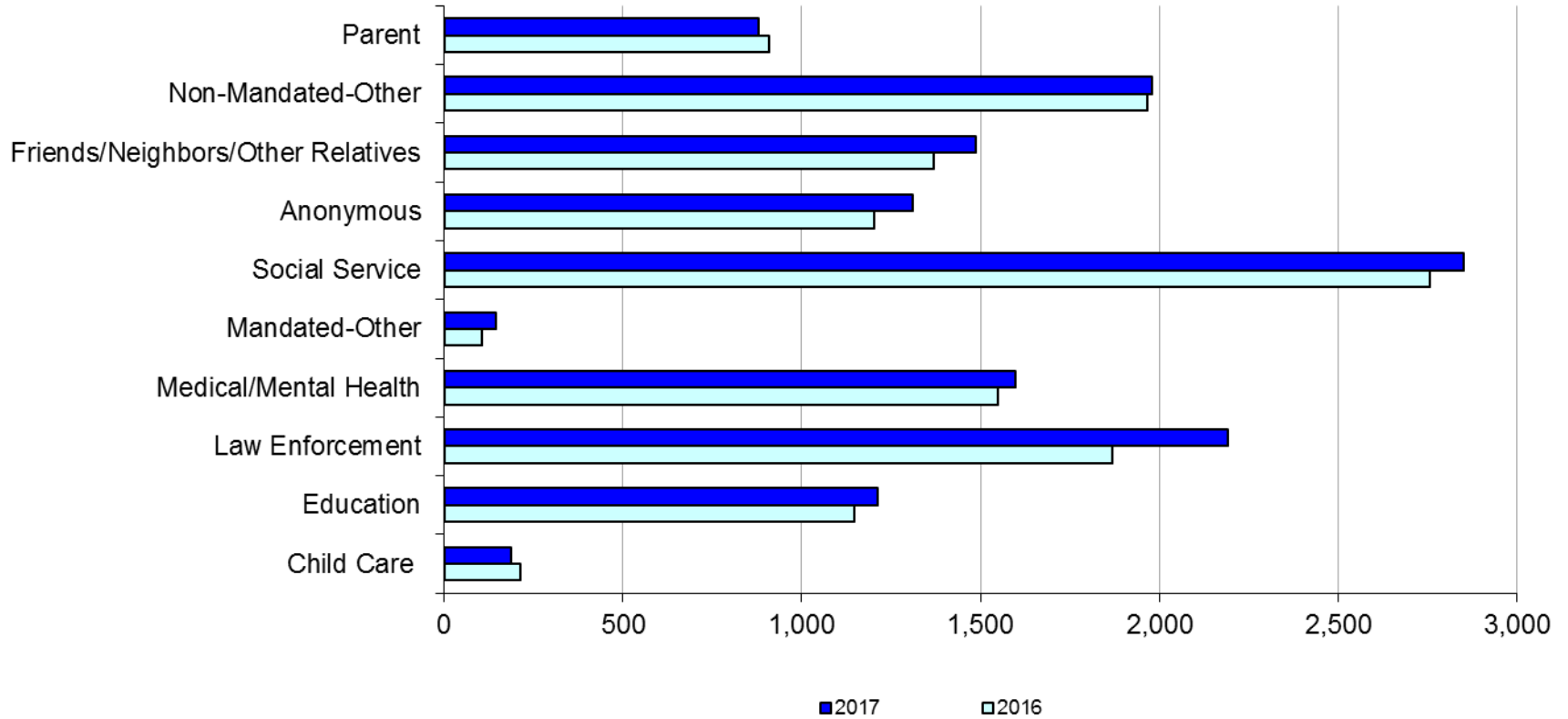
d



**Table 1 - SCR Intake Changes by Borough, JUN 16 - AUG 16 and JUN 17 - AUG 17**

Month	Year	Bronx	Brooklyn	Manhattan	Queens	Staten Island	OSI	Other	Total
JUN	2016	1,472	1,467	669	1,039	268	158	191	5,265
	2017	1,538	1,442	784	1,075	277	167	207	5,490
	% Change	4.5%	-1.7%	17.2%	3.5%	3.4%	5.7%	8.4%	4.3%
JUL	2016	1,072	993	589	712	202	158	174	3,900
	2017	1,109	1,103	652	749	235	156	177	4,181
	% Change	3.5%	11.1%	10.7%	5.2%	16.3%	-1.3%	1.7%	7.2%
AUG	2016	1,083	1,148	525	734	179	179	185	4,033
	2017	1,139	1,097	651	756	261	163	164	4,231
	% Change	5.2%	-4.4%	24.0%	3.0%	45.8%	-8.9%	-11.4%	4.9%
Total	2016	3,627	3,608	1,783	2,485	649	495	550	13,198
	2017	3,786	3,642	2,087	2,580	773	486	548	13,902
	% Change	4.4%	0.9%	17.0%	3.8%	19.1%	-1.8%	-0.4%	5.3%

**Figure 2: Citywide SCR Intakes by Reporter Group, JUN 16 - AUG 16 and JUN 17 - AUG 17**

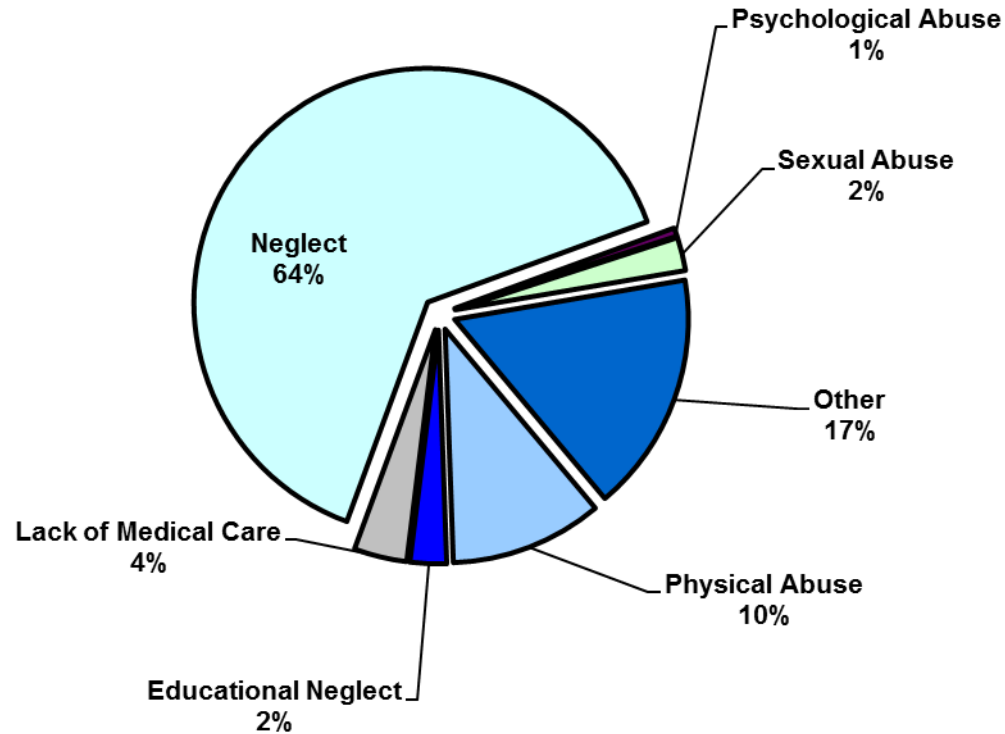


**Table 2 - SCR Intakes by Reporter Group, JUN 16 - AUG 16 and JUN 17 - AUG 17**

Year	Child Care/ Substitute Care Personnel	Educational Personnel	Law Enforcement	Medical/ Mental Health Personnel	Mandated- Other	Social Service Personnel	Anonymous	Friends/ Neighbors/ Other Relatives	Non- Mandated- Other	Parent	Foster Parent	*Total
<b>Bronx</b>												
2016	55	346	447	415	37	778	354	407	564	223	1	3,627
2017	46	327	583	419	39	762	371	454	555	230	0	3,786
% Change	-16.4%	-5.5%	30.4%	1.0%	5.4%	-2.1%	4.8%	11.5%	-1.6%	3.1%	-100.0%	4.4%
<b>Brooklyn</b>												
2016	53	348	602	397	30	679	333	383	533	247	3	3,608
2017	52	329	666	420	34	717	346	381	486	211	0	3,642
% Change	-1.9%	-5.5%	10.6%	5.8%	13.3%	5.6%	3.9%	-0.5%	-8.8%	-14.6%	-100.0%	0.9%
<b>Manhattan</b>												
2016	33	129	299	234	13	377	139	160	282	117	0	1,783
2017	29	132	379	252	14	428	218	221	305	109	0	2,087
% Change	-12.1%	2.3%	26.8%	7.7%	7.7%	13.5%	56.8%	38.1%	8.2%	-6.8%	--	17.0%
<b>Queens</b>												
2016	22	238	314	322	13	573	226	256	368	152	1	2,485
2017	25	319	340	311	35	556	212	259	377	145	1	2,580
% Change	13.6%	34.0%	8.3%	-3.4%	169.2%	-3.0%	-6.2%	1.2%	2.4%	-4.6%	0.0%	3.8%
<b>Staten Island</b>												
2016	11	66	87	84	5	103	91	82	79	39	2	649
2017	7	81	94	94	8	160	86	107	89	47	0	773
% Change	-36.4%	22.7%	8.0%	11.9%	60.0%	55.3%	-5.5%	30.5%	12.7%	20.5%	-100.0%	19.1%
<b>OSI</b>												
2016	35	10	25	41	3	111	32	43	95	98	2	495
2017	24	16	27	47	13	80	51	26	126	75	1	486
% Change	-31.4%	60.0%	8.0%	14.6%	333.3%	-27.9%	59.4%	-39.5%	32.6%	-23.5%	-50.0%	-1.8%
<b>Other</b>												
2016	5	10	93	57	4	135	27	37	47	34	0	551
2017	4	9	102	56	1	148	25	39	40	62	1	548
% Change	-20.0%	-10.0%	9.7%	-1.8%	-75.0%	9.6%	-7.4%	5.4%	-14.9%	82.4%	--	-0.5%
<b>Citywide</b>												
2016	214	1,147	1,867	1,550	105	2,756	1,202	1,368	1,968	910	9	13,198
2017	187	1,213	2,191	1,599	144	2,851	1,309	1,487	1,978	879	3	13,902
% Change	-12.6%	5.8%	17.4%	3.2%	37.1%	3.4%	8.9%	8.7%	0.5%	-3.4%	-66.7%	5.3%

\*There is a small number of intakes with unknown reporter that is included in the totals.

**Figure 3: SCR Allegations, JUN 17 – AUG 17**



Total Allegations = 37,569

Allegations are grouped as follows: Physical Abuse - burn, fatality, fracture, choking, twisting, shaking, excessive corporal punishment, internal injuries, lacerations, bruises, welts, poisoning, noxious substances; Educational Neglect – educational neglect; Lack of Medical Care – lack of medical care; Neglect - inadequate guardianship, inadequate food, clothing, shelter, lack of supervision, malnutrition, failure to thrive, swelling, dislocations, sprains; Psychological Abuse - isolation, emotional neglect; Sexual Abuse – sexual abuse; and Other -parental drug use, child drug use, abandonment, inappropriate custodial conduct.

**Table 3 - SCR Allegations, JUN 16 - AUG 16 and JUN 17 - AUG 17**

Year	Physical Abuse	Educational Neglect	Lack of Medical Care	Neglect	Psychological Abuse	Sexual Abuse	Other	Total
<b>Bronx</b>								
2016	1,058	302	407	6,731	57	216	1,732	10,503
2017	1,059	331	407	7,084	45	239	1,935	11,100
% Change	0.1%	9.6%	0.0%	5.2%	-21.1%	10.6%	11.7%	5.7%
<b>Brooklyn</b>								
2016	1,010	288	339	6,355	47	218	1,517	9,774
2017	1,027	278	385	6,251	57	246	1,452	9,696
% Change	1.7%	-3.5%	13.6%	-1.6%	21.3%	12.8%	-4.3%	-0.8%
<b>Manhattan</b>								
2016	416	97	140	2,471	18	74	602	3,818
2017	430	119	181	2,738	26	114	733	4,341
% Change	3.4%	22.7%	29.3%	10.8%	44.4%	54.1%	21.8%	13.7%
<b>Queens</b>								
2016	719	117	247	3,906	45	175	1,005	6,214
2017	792	149	233	4,399	70	143	1,143	6,929
% Change	10.2%	27.4%	-5.7%	12.6%	55.6%	-18.3%	13.7%	11.5%
<b>Staten Island</b>								
2016	172	62	61	1,249	12	30	378	1,964
2017	196	44	70	1,467	4	27	511	2,319
% Change	14.0%	-29.0%	14.8%	17.5%	-66.7%	-10.0%	35.2%	18.1%
<b>OSI</b>								
2016	272	18	86	1,361	13	79	186	2,015
2017	335	14	56	1,354	3	59	185	2,006
% Change	23.2%	-22.2%	-34.9%	-0.5%	-76.9%	-25.3%	-0.5%	-0.4%
<b>Other</b>								
2016	110	14	37	682	4	32	246	1,125
2017	124	13	44	670	16	39	272	1,178
% Change	12.7%	-7.1%	18.9%	-1.8%	300.0%	21.9%	10.6%	4.7%
<b>Citywide</b>								
2016	3,757	898	1,317	22,755	196	824	5,666	35,413
2017	3,963	948	1,376	23,963	221	867	6,231	37,569
% Change	5.5%	5.6%	4.5%	5.3%	12.8%	5.2%	10.0%	6.1%



**TABLE 4 - Child Welfare Preventive Cases  
New and Closed  
January 2014 to August 2017**

Month	New Cases	Closed Cases
<b>2014</b>		
Jan-14	841	686
Feb-14	885	726
Mar-14	998	930
Apr-14	919	941
May-14	919	982
Jun-14	890	826
Jul-14	973	1,168
Aug-14	826	1,102
Sep-14	841	771
Oct-14	835	917
Nov-14	677	788
Dec-14	1,062	821
<b>2015</b>		
Jan-15	728	792
Feb-15	902	751
Mar-15	1,122	831
Apr-15	977	932
May-15	914	999
Jun-15	1,068	930
Jul-15	899	1,217
Aug-15	893	1,064
Sep-15	764	964
Oct-15	749	889
Nov-15	746	807
Dec-15	1,013	881
<b>2016</b>		
Jan-16	792	770
Feb-16	897	795
Mar-16	1,029	978
Apr-16	836	892
May-16	890	966
Jun-16	996	935
Jul-16	842	1,069
Aug-16	897	1,006
Sep-16	821	850
Oct-16	776	627
Nov-16	728	490
Dec-16	816	462
<b>2017</b>		
Jan-17	548	449
Feb-17	602	920
Mar-17	864	1,032
Apr-17	645	780
May-17	790	925
Jun-17	908	944
Jul-17	765	852
Aug-17	860	865

**Table 5 - Referrals to Child Welfare Preventive Services by Source  
January 2014 to August 2017**

Month	Total Referrals	Division of Child Protection	Foster Care Agencies	PPRS Transfer	School	Self	Other Sources*
<b>2014</b>							
Jan-14	1,537	70.0%	1.2%	6.6%	2.3%	5.8%	14.2%
Feb-14	1,334	69.7%	0.8%	8.4%	1.7%	5.5%	13.9%
Mar-14	1,612	70.0%	1.4%	8.6%	1.6%	5.3%	13.1%
Apr-14	1,525	70.2%	0.9%	7.6%	2.1%	3.7%	15.4%
May-14	1,580	74.4%	0.7%	8.3%	1.4%	5.2%	10.0%
Jun-14	1,550	78.6%	1.2%	6.3%	1.2%	3.2%	9.4%
Jul-14	1,659	79.6%	1.5%	6.7%	0.4%	4.2%	7.6%
Aug-14	1,395	72.2%	1.6%	10.8%	0.3%	4.9%	10.3%
Sep-14	1,597	49.4%	1.5%	7.6%	0.3%	4.5%	36.8%
Oct-14	1,634	68.2%	1.9%	10.0%	1.2%	4.6%	14.1%
Nov-14	1,311	66.4%	0.9%	14.3%	2.4%	3.9%	12.1%
Dec-14	1,785	71.1%	1.4%	8.8%	2.9%	4.8%	11.0%
CY 2014	18,519	70.1%	1.3%	8.6%	1.5%	4.6%	14.0%
<b>2015</b>							
Jan-15	1,430	74.4%	1.6%	8.7%	1.8%	3.8%	9.7%
Feb-15	1,538	76.5%	0.8%	8.1%	1.8%	4.7%	8.2%
Mar-15	1,798	74.6%	0.9%	7.3%	1.6%	4.8%	10.8%
Apr-15	1,719	78.2%	1.3%	7.2%	0.6%	3.5%	9.1%
May-15	1,561	77.2%	1.0%	5.1%	1.5%	4.5%	10.8%
Jun-15	1,716	77.4%	1.1%	7.7%	1.2%	3.5%	9.1%
Jul-15	1,511	79.6%	0.9%	7.2%	0.3%	3.8%	8.2%
Aug-15	1,418	79.3%	2.2%	7.8%	0.2%	3.1%	7.5%
Sep-15	1,209	72.1%	2.8%	10.4%	0.5%	5.5%	8.6%
Oct-15	1,338	70.4%	1.9%	8.3%	2.1%	5.8%	11.6%
Nov-15	1,220	68.2%	1.8%	9.6%	1.4%	6.2%	12.8%
Dec-15	1,526	73.5%	1.6%	8.0%	2.0%	5.0%	9.9%
<b>2016</b>							
Jan-16	1,370	73.6%	1.6%	8.2%	0.7%	5.4%	10.6%
Feb-16	1,436	75.8%	2.2%	7.8%	1.0%	3.8%	9.3%
Mar-16	1,557	72.0%	2.1%	8.8%	1.0%	4.6%	11.4%
Apr-16	1,378	76.1%	1.5%	7.4%	1.5%	3.5%	10.0%
May-16	1,386	73.4%	1.4%	8.7%	1.0%	4.7%	10.8%
Jun-16	1,564	77.2%	2.4%	6.2%	1.5%	4.1%	8.6%
Jul-16	1,338	80.3%	1.7%	6.4%	1.0%	4.2%	6.4%
Aug-16	1,385	79.1%	1.8%	7.1%	0.4%	4.0%	7.6%
Sep-16	1,297	77.8%	2.1%	7.5%	0.8%	4.5%	7.4%
Oct-16	1,247	70.1%	2.0%	7.6%	1.5%	5.9%	12.9%
Nov-16	1,229	67.8%	2.0%	7.8%	1.2%	5.5%	15.8%
Dec-16	1,175	76.0%	1.5%	7.1%	1.3%	3.8%	10.3%
<b>2017</b>							
Jan-17	1,046	78.5%	1.4%	6.7%	0.7%	3.1%	9.7%
Feb-17	1,067	77.7%	0.8%	6.7%	0.8%	3.8%	10.1%
Mar-17	1,383	79.1%	0.6%	6.9%	0.9%	4.0%	8.5%
Apr-17	1,116	81.2%	1.0%	5.9%	1.1%	1.4%	9.4%
May-17	1,335	81.9%	0.9%	5.5%	1.3%	2.8%	7.6%
Jun-17	1,449	82.3%	0.8%	5.9%	1.2%	2.9%	6.9%
Jul-17	1,276	83.3%	0.9%	7.8%	0.7%	2.0%	5.3%
Aug-17	1,444	83.2%	0.6%	9.4%	0.3%	1.6%	4.9%

\*Other Community Sources includes the Department of Homeless Services, Family Court, FAP, Hospitals and Medical facilities, the NYC Housing Authority, Probation, and Sponsor Agencies.