

# Brooklyn Bridge - Montgomery Coastal Resilience

February 2023  
www.nyc.gov/bmcr



East River Esplanade at Catherine Slip on Dry Day



Activated Flip Up Gates at Catherine Slip During Storm

The Brooklyn Bridge - Montgomery Coastal Resilience (BMCR) project is a coastal protection initiative, jointly funded by the City of New York and the federal government, aimed at reducing flood risk due to coastal storms and sea level rise in the Two-Bridges Neighborhood in Lower Manhattan. The BMCR project is part of the Lower Manhattan Coastal Resilience (LMCR) project which spans the entire Lower Manhattan coast and is the City's plan to protect residents, businesses, and critical infrastructure from flooding. The BMCR project reconstructs a portion of the East River Esplanade to reduce risk from flooding while maintaining views and waterfront access.

## BMCR Overview

### Location

- Brooklyn Bridge to Montgomery Street under FDR Drive

### Scope of Work

- Install flood gates and barriers
- Esplanade reconstruction
- Installation of new amenities
- Combined Sewer Overflow (CSO) and utility work

### Construction Management:

New York City Department of Design and Construction (NYCDDC)  
Thomas Foley, P.E., Commissioner

### Sponsor Agency

New York City Economic Development Corporation (NYCEDC)  
Andrew Kimball, President & CEO

### Design Consultant

AECOM

### Program & Construction Management (PMCM)

Jacobs - GPI Joint Venture

### Contractor

John P. Picone Inc.

**Project ID:** SANDTWOB

**Budget:** \$349 M

**Substantial Completion:** 2026



### Questions? Preguntas? 问题?

Please contact **Community Construction Liaison (CCL)** for project related inquiries or concerns:

#### **BMCR CCL:**

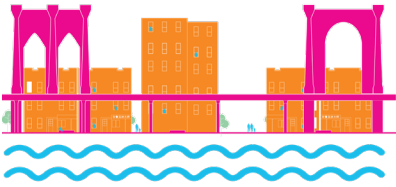
**Marsha Guido**

**bmcr.ccl@gmail.com**

**347-538-4266**

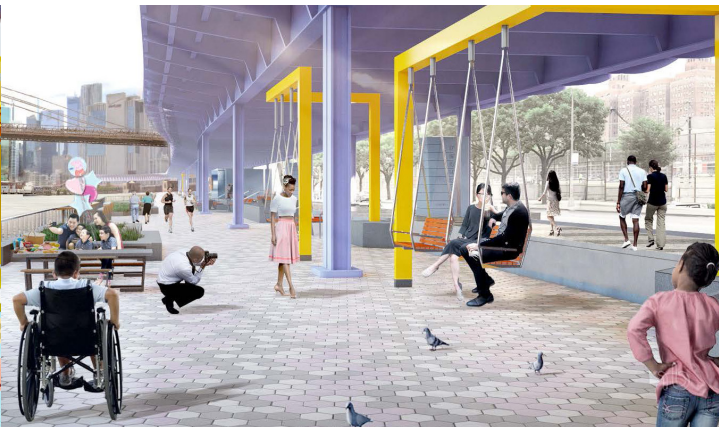
**Submit an inquiry:** <https://www.nyc.gov/bmcr/contact>





# Brooklyn Bridge - Montgomery Coastal Resilience

[www.nyc.gov/bmcr](http://www.nyc.gov/bmcr)



## Flood Protection

- Flood protection will be provided through a series of deployable and permanent barriers installed along the neighborhood edge of the esplanade, under the elevated FDR Drive. Deployable barriers will be hidden until they are activated in the event of a storm
- Deployable barriers: flip-up gates, roller gates, and swing gates
- Permanent barriers: flood walls and elevated surfaces
- Sewer capacity improvements will provide additional flood protection during heavy rainfall events
- Interceptor Gate Building

## Parks and Recreation

The BMCR Project will provide a mix of active and passive use amenities to the Two-Bridges neighborhood:

- Open air seating: chaise lounges, gliders, benches, picnic tables, and game tables
- Fitness equipment: pull up bars, leg press, seated bench press, incline press, push up & leg shift, triple bars, arm bike, and dip bench
- Basketball half-court
- Ping pong tables
- Various playgrounds
- Performance space

