



EXTERIOR HANDICAP ACCESSIBLE RAMP & ENTRANCE DOORS
130 8th AVENUE, BROOKLYN, NY. 11215

GUSTAVSON
DUNDES





192 LEXINGTON AVENUE
NEW YORK, N.Y. 10016
TEL: (212) 251-0212
FAX: (212) 251-0211
WWW.GDARCHITECTS.COM

ARCHITECTURE
& DESIGN



LEGEND

 HISTORIC DISTRICT

 PROPERTY
130 8th Ave. Brooklyn, NY













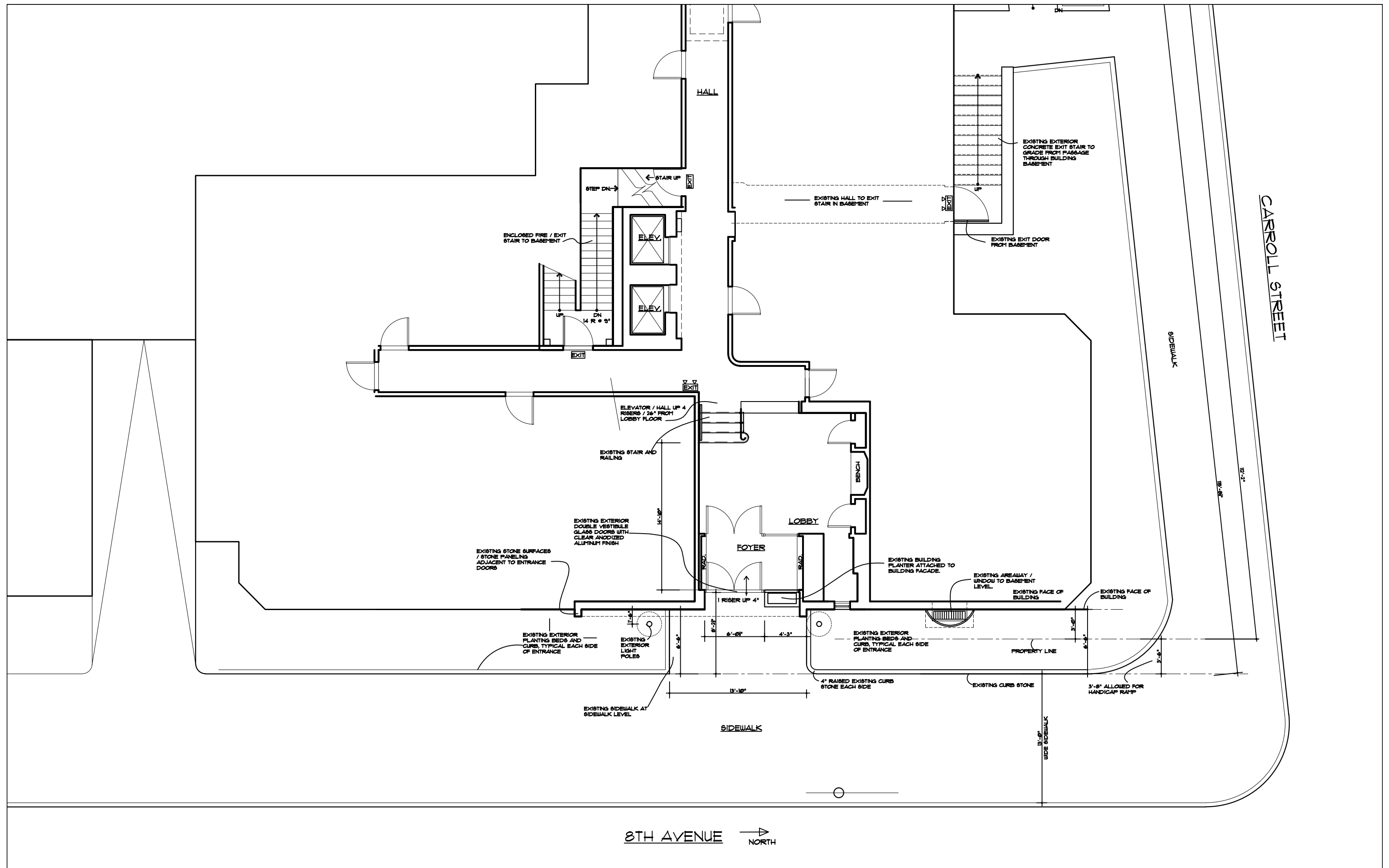
130

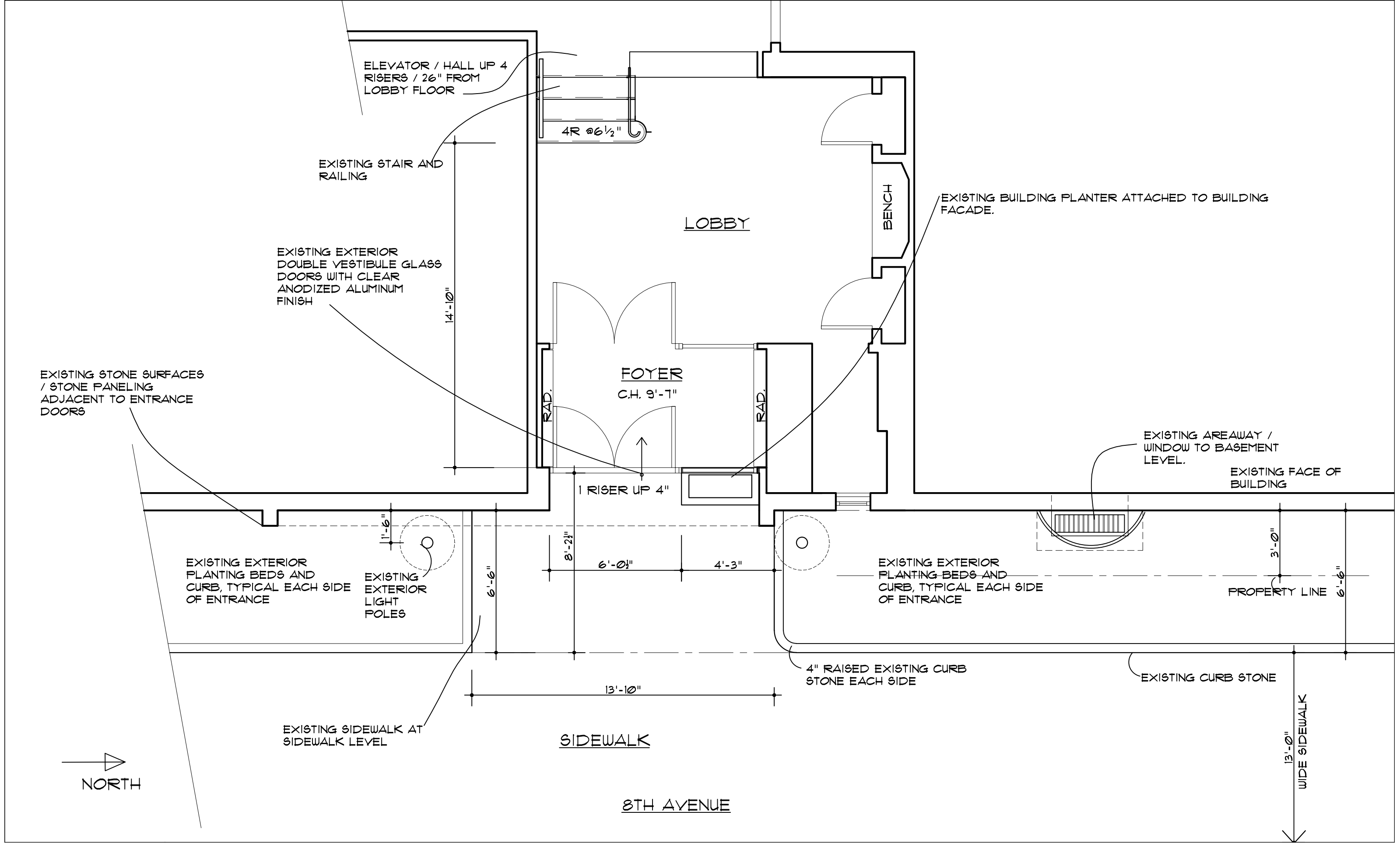
ALL
VISITORS
MUST BE
ANNOUNCED

130







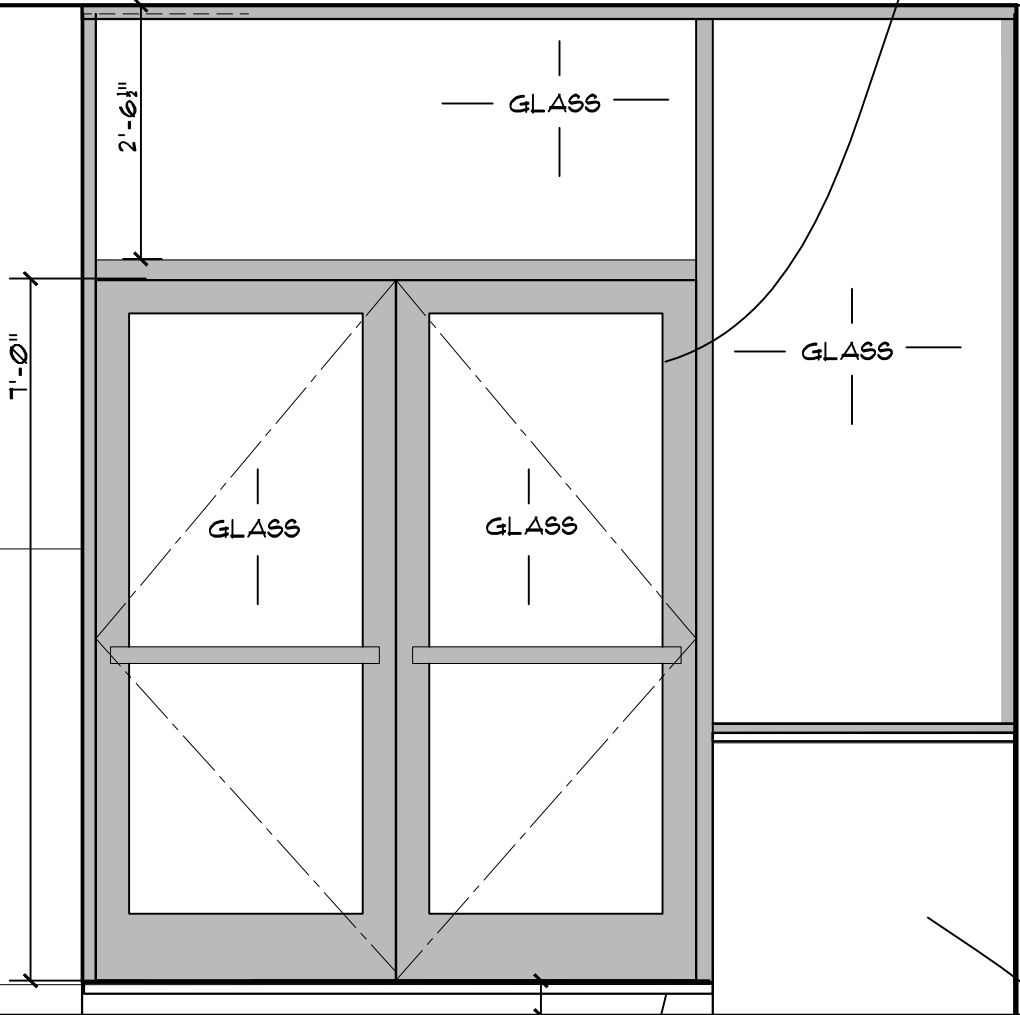


EXISTING FACADE MATERIAL
AND JOINTING TO REMAIN
(TYPICAL)

EXISTING WINDOWS AND
FENESTRATION TO REMAIN

EXISTING ALUMINUM / GLASS
STOREFRONT AND DOORS WITH
CLEAR COAT FINISH AND OVER
HEAD SELF CLOSER TO BE
REMOVED

130



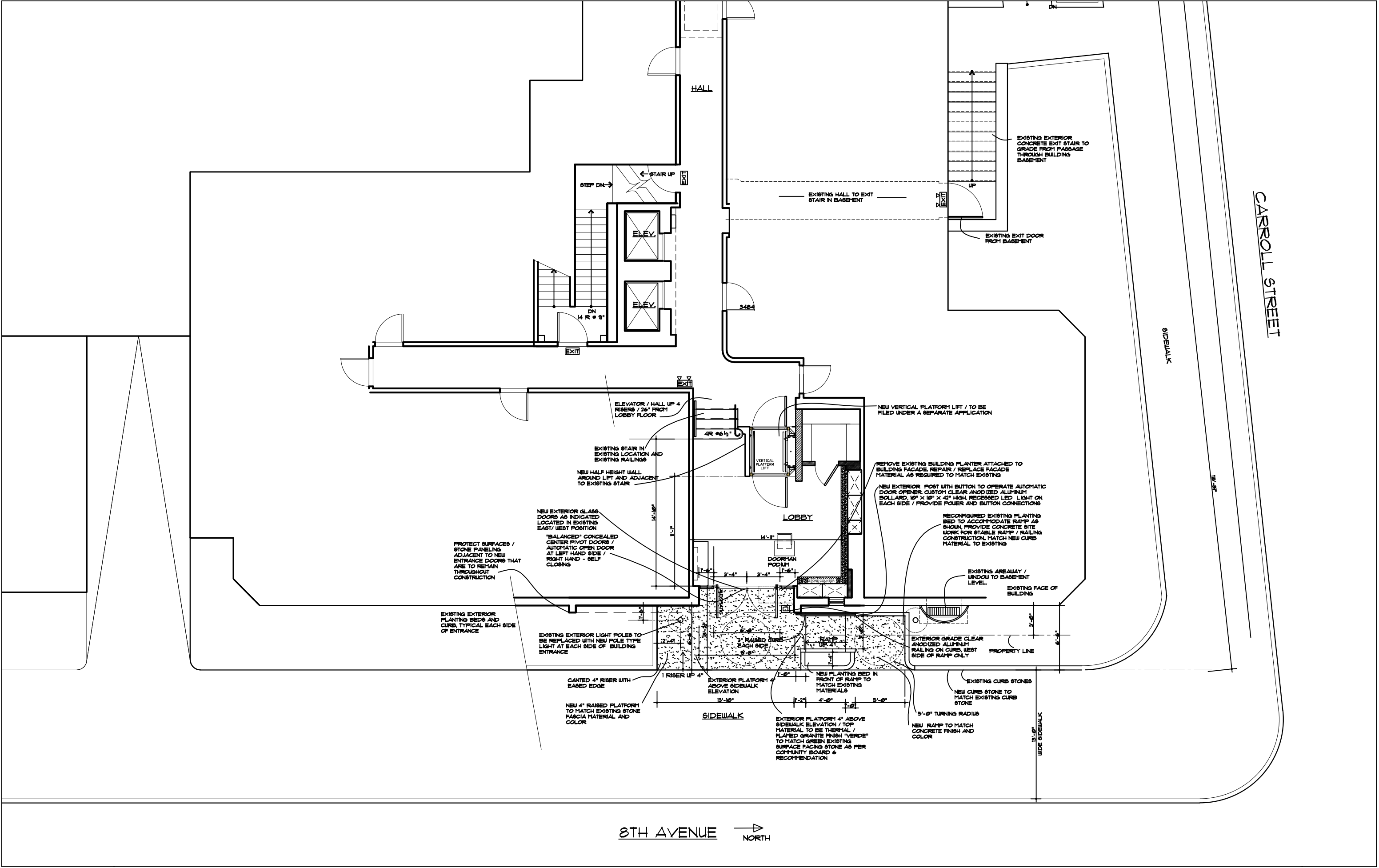
EXISTING ELECTRIC LAMP POLES /
BLACK FINISH EACH SIDE TO BE
REMOVED AND REPLACED WITH NEW
HIGH EFFICIENCY POLES

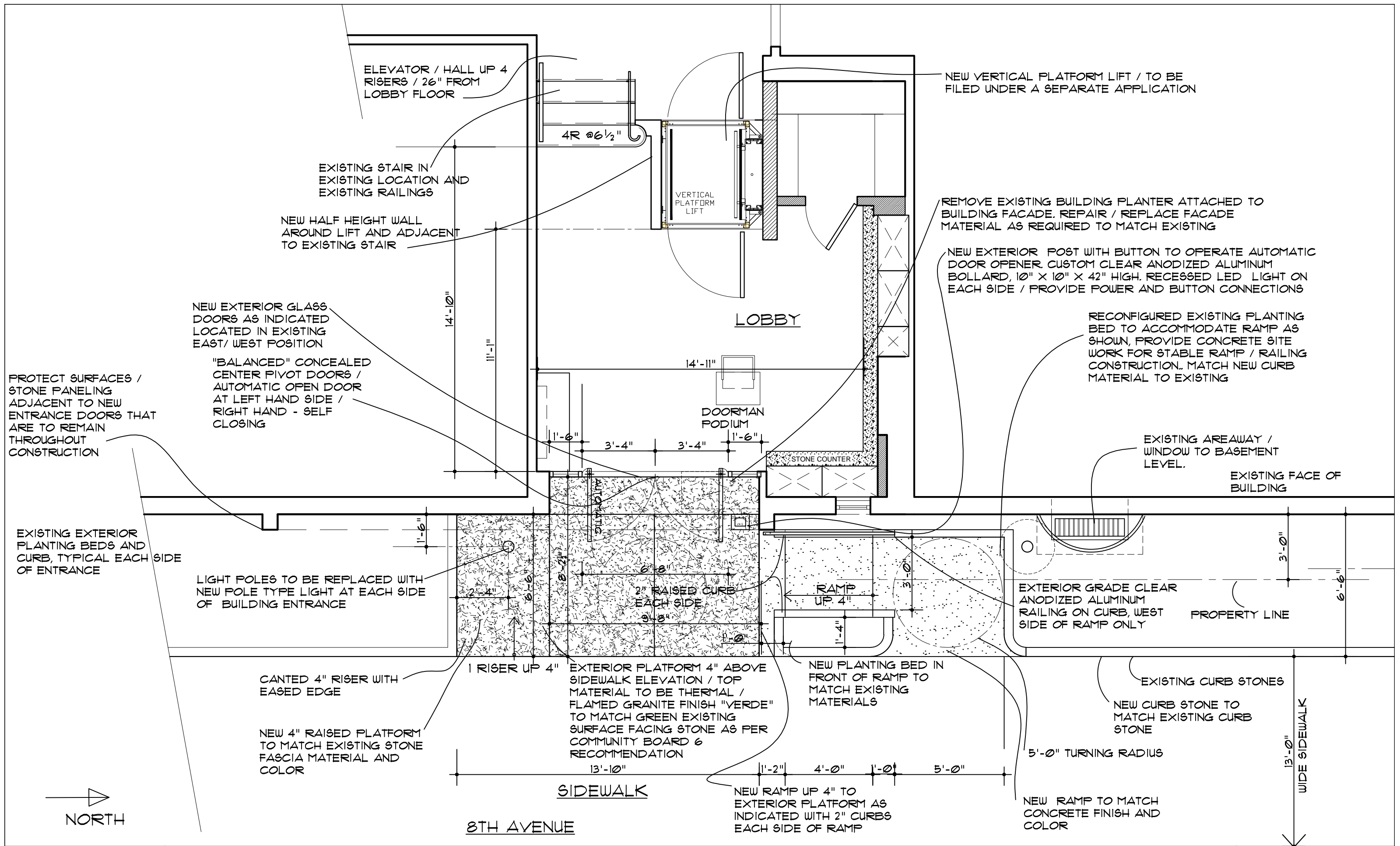
EXISTING CURB STONES

STEP UP ONE RISER

EXISTING WINDOWS TO
REMAIN

EXISTING ENTRANCE PLANTER TO BE
REMOVED





EXISTING FACADE MATERIAL
AND JOINTING TO REMAIN
(TYPICAL)

EXISTING WINDOWS AND
FENESTRATION TO REMAIN

MINIMAL GLASS RAIL
ATTACHMENT AT
VESTIBULE CEILING

DOOR SPECIFICATION:
C.R. LAURENCE CO.
"BALANCER SERIES" P
STYLE, BALANCED DOOR /
ALL GLASS WITH
CONCEALED SHAFT WITH
TRANSOM AND SIDELIGHTS.
 $\frac{5}{8}$ " HERCULITE DOOR GLASS WITH
10" HIGH SQUARE EDGE RAILS.
DOOR FINISH: CLEAR ANODIZED ALUM.
TO MATCH EXISTING WINDOW FRAMES

LAMP POLE
POSITION
VARIES PER
SCHEME

EXTERIOR GRADE CLEAR
ANODIZED ALUMINUM
RAILING WEST SIDE OF
RAMP ONLY

EXISTING CURB STONES

EXISTING EXTERIOR LIGHT POLES TO
BE REPLACED WITH NEW POLE TYPE
LIGHT AT EACH SIDE OF BUILDING
ENTRANCE

CANTED 4" RISER WITH
EASED EDGE

MINIMAL VERTICAL
GLAZING / SUPPORT STILE
AT DOORS / SIDE LITES

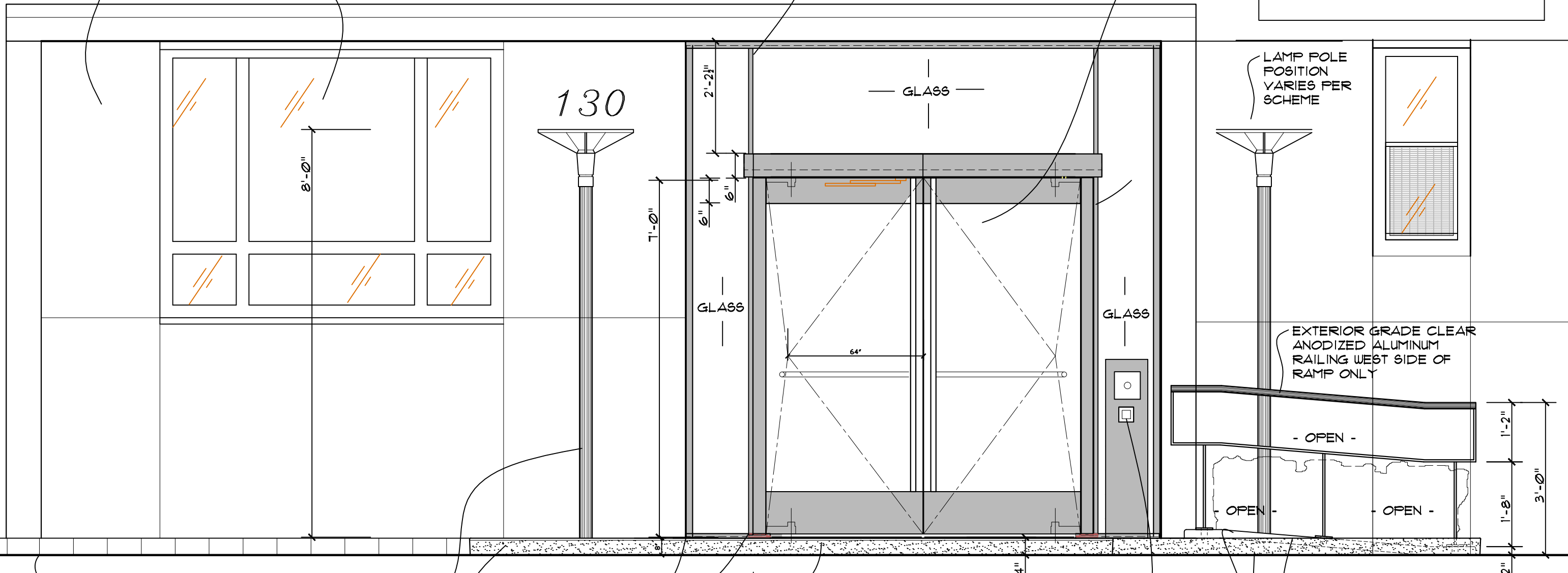
EXTERIOR PLATFORM 4" ABOVE
SIDEWALK ELEVATION / TOP
MATERIAL TO BE THERMAL /
FLAMED GRANITE FINISH "VERDE"
TO MATCH GREEN EXISTING
SURFACE FACING STONE AS PER
COMMUNITY BOARD 6
RECOMMENDATION

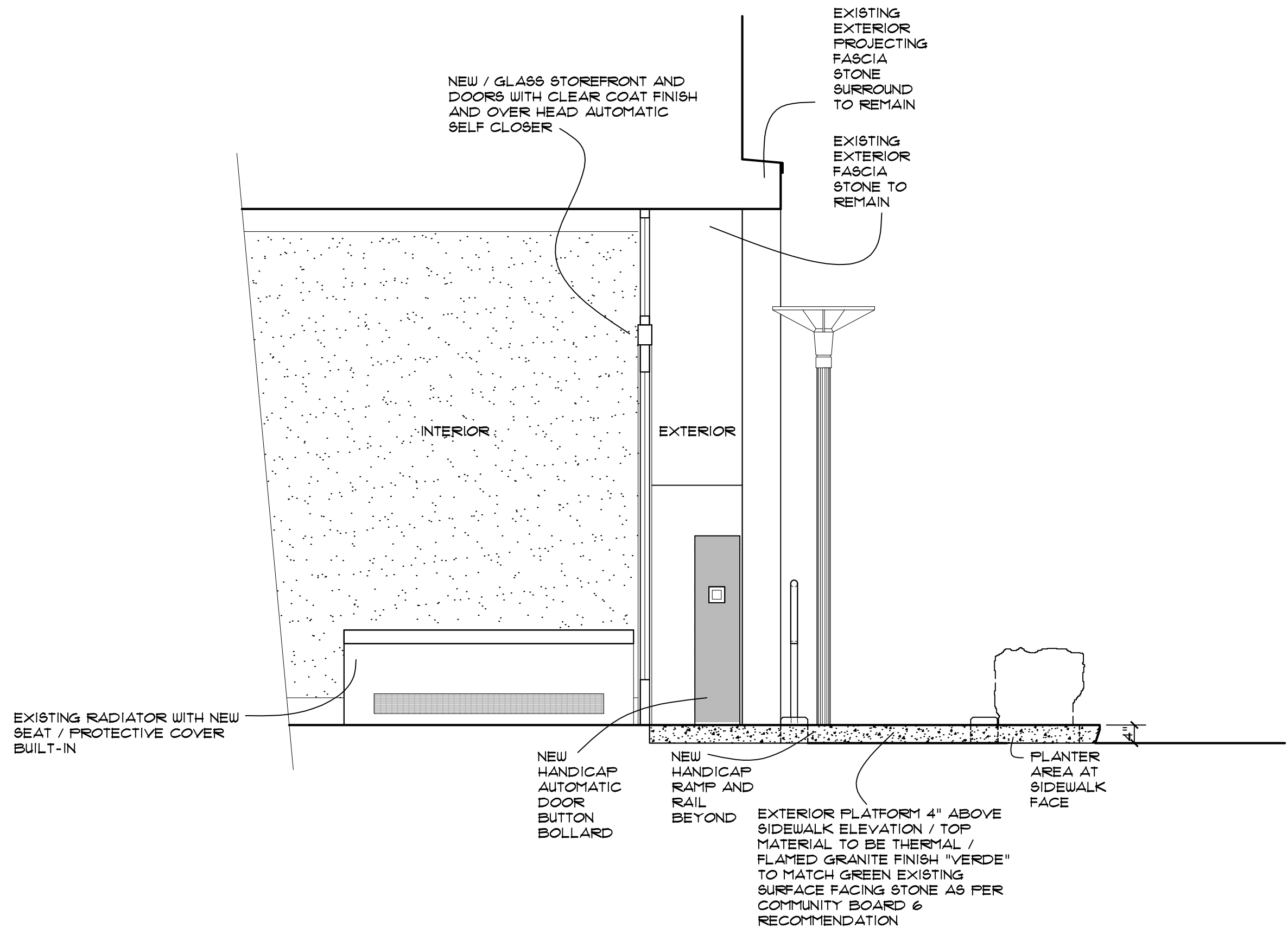
NEW EXTERIOR POST WITH BUTTON TO OPERATE AUTOMATIC
DOOR OPENER. CUSTOM CLEAR ANODIZED ALUMINUM
BOLLARD, 10" X 10" X 42" HIGH. RECESSED LED LIGHT ON
EACH SIDE / PROVIDE POWER AND BUTTON CONNECTIONS

LINE OF "PLANTER" CURB,

NEW RAMP AND CURB / CURB TO
BE 2" ABOVE CURBS AS SHOWN

NEW RAMP UP 4" TO
EXTERIOR PLATFORM AS
INDICATED WITH 2" CURBS
EACH SIDE OF RAMP.
RAMP TO MATCH EXISTING
CONCRETE FINISH AND
COLOR





Technical drawing showing a side elevation of a ramp and platform assembly. The drawing includes the following dimensions and annotations:

- Top horizontal dimensions: 1'-0" (left), 4'-0" (center), and 1'-0" (right).
- Internal horizontal dimensions: 2'-4" (left) and 2'-4" (right).
- Annotations: "- OPEN -" (three locations), "NEW RAMP TO MATCH CONCRETE FINISH AND COLOR" (bottom left), and "2" (bottom right).
- The drawing shows a sloped ramp structure supported by vertical posts, with a horizontal platform section at the top.

Technical drawing showing a side elevation of a ramp and platform assembly. The drawing includes the following dimensions and annotations:

- Top horizontal dimensions: 1'-0" (left), 4'-0" (center), and 1'-0" (right).
- Internal horizontal dimensions: 2'-4" (left) and 2'-4" (right).
- Annotations: "- OPEN -" (three locations), "NEW RAMP TO MATCH CONCRETE FINISH AND COLOR" (bottom left), and "2" (bottom right).
- The drawing shows a sloped ramp structure supported by vertical posts, with a horizontal platform section at the top.

1-1/2" DIAMETER ANODIZED ALUMINUM RAIL WITH CLOSED ENDS. RAIL TO FOLLOW RAMP ANGLES AND EXTEND 12" PAST EITHER END OF RAMP SLOPE

D

1'-2"

3'-0"

1'-10"

FRONT (NORTH) ELEVATION

NEW RAMP TO MATCH CONCRETE FINISH AND COLOR

1-1/2" DIAMETER ANODIZED ALUMINUM RAIL WITH CLOSED ENDS. RAIL TO FOLLOW RAMP ANGLES AND EXTEND 12" PAST EITHER END OF RAMP SLOPE

D

1'-2"

3'-0"

1'-10"

FRONT (NORTH) ELEVATION

NEW RAMP TO MATCH CONCRETE FINISH AND COLOR

1-1/2" DIAMETER ANODIZED ALUMINUM RAIL WITH CLOSED ENDS. RAIL TO FOLLOW RAMP ANGLES AND EXTEND 12" PAST EITHER END OF RAMP SLOPE

D

1'-2"

3'-0"

1'-10"

FRONT (NORTH) ELEVATION

NEW RAMP TO MATCH CONCRETE FINISH AND COLOR

2" HIGH CONCRETE CURB, TO FOLLOW
RAMP, EASE EDGES