

RESTORATION HARDWARE

935 BROADWAY, NEW YORK, NY 10010

ZONING NOTES

ADDRESS: 935 BROADWAY, NEW YORK, NY 10010
BLOCK: 850
LOT #: 75
ZONING DISTRICT: > 50% C6-4M, <50% M1-5M
ZONING MAP: 8D
OCCUPANCY GROUP: MERCHANTILE
LANDMARK DISTRICT: LADIES MILE HISTORIC DISTRICT
EXIST. BUILDING FLOOR AREA: ±57,300 SF (NO CHANGE)

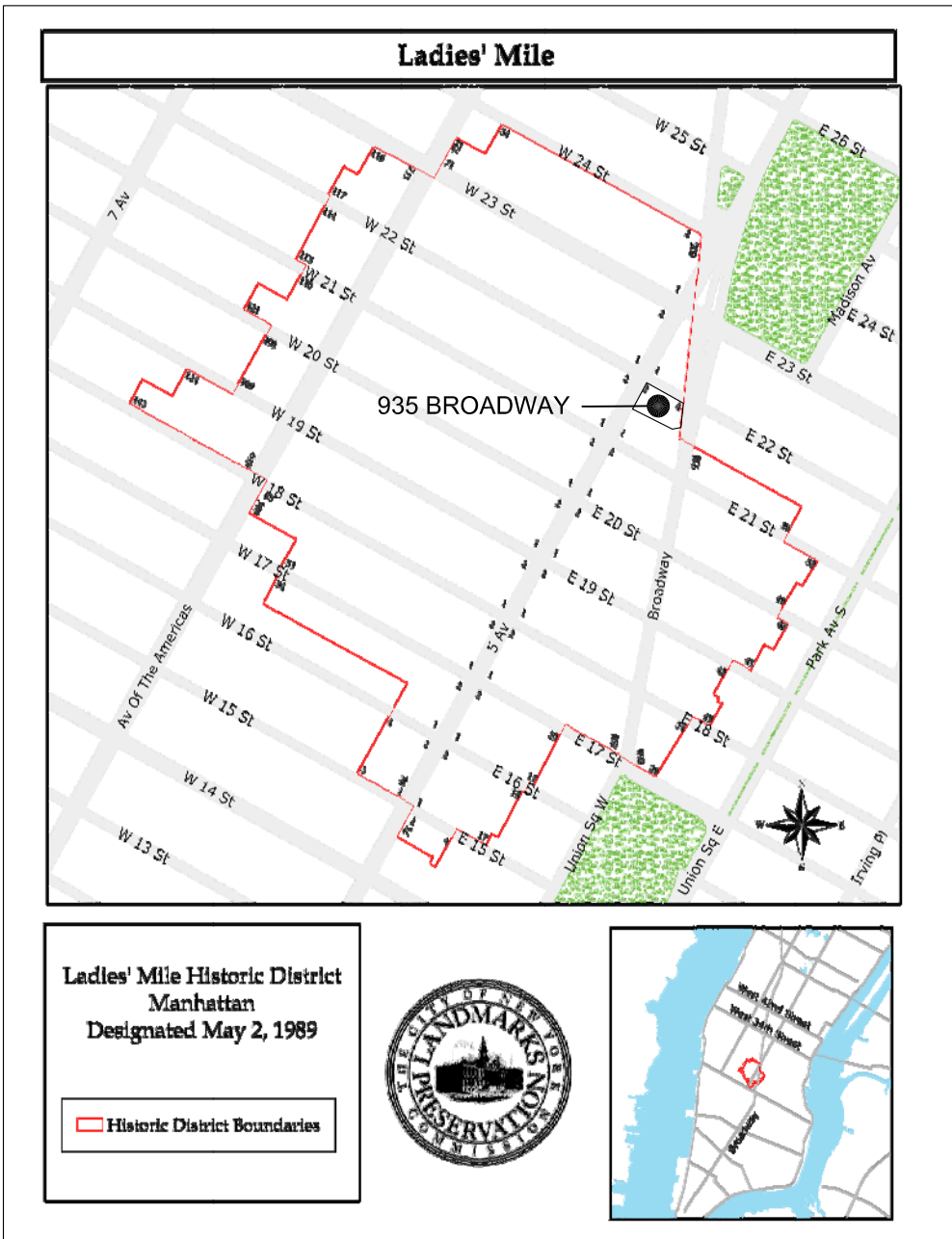
EXISTING BUILDING INFORMATION

COMMUNITY BD: 5
TOTAL LOT AREA: ±9,450 SF
HEIGHT: ±94'-0" FT (±73'-0" TO LAST OCCUPIABLE FLOOR)
NO. STOREY: 6 STOREYS + CELLAR
CONSTRUCTION CLASS: CLASS 3 NON-FIREPROOF (1938 CODE)
OCCUPANCY LOAD: CELLAR: 67; FIRST FLOOR: 221; 2ND FLOOR: 128; 3RD FLOOR: 127



1 SITE PLAN

SCALE: 1/64"=1'-0"



2 LADIES HISTORIC DISTRICT MAP

SCALE: NTS



3 TAX LOT PHOTO ca. 1940 - CREDIT NYC MUNICIPAL ARCHIVES

SCALE: NTS

OWNER:
RESTORATION HARDWARE
935 BROADWAY
NEW YORK, NY 10010

ARCHITECT:
FIFIELD|PIAKER|ELMAN|ARCHITECTS, PC
740 BROADWAY, SUITE 601
NEW YORK, NY 10003
TEL. 212 979 9272
FAX. 212 979 9276



4 935 BROADWAY - 11/10/2015

SCALE: NTS

FIFIELD|PIAKER|ELMAN
ARCHITECTS, PC

740 Broadway
New York, New York 10003
tel 212 979 9272
fax 212 979 9276
www.fpe-architects.com

NO USE, REPRODUCTION
OR DISSEMINATION MAY
BE MADE OF THIS
DRAWING & CONCEPTS
SET FORTH HEREON
WITHOUT THE PRIOR
WRITTEN CONSENT OF

FIFIELD|PIAKER|ELMAN
ARCHITECTS P.C.
COPYRIGHT © 2013

Project:
RESTORATION HARDWARE
935 BROADWAY
NEW YORK, NY 10010

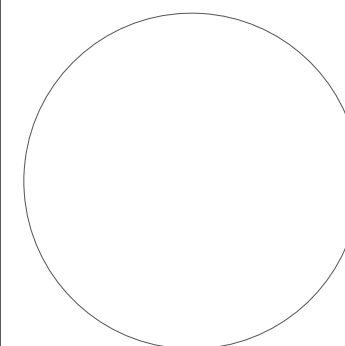
1	ISSUED TO LPC	10.21.16
No:	Description:	Date:
Revisions:		

No:	Description:	Date:
Revisions:		

No:	Description:	Date:
Revisions:		

Job No: 2013009.09
Scale: AS SHOWN
Date: 10.21.2016
Drawn: DP, LB

Sheet Title:
COVER SHEET, GENERAL NOTES, SITE
PLAN



Drawing No.:

T-001.00

Sheet 01 of 24



1 FIFTH AVE 9/11/15 - LPC VIOLATIONS DEPT.
SCALE: 1/64"=1'-0"

FIFIELD | PIAKER | ELMAN
ARCHITECTS, PC

740 Broadway
New York, New York 10003
tel 212 979 9272
fax 212 979 9276
www.fpe-architects.com

NO USE, REPRODUCTION
OR DISSEMINATION MAY
BE MADE OF THIS
DRAWING & CONCEPTS
SET FORTH HEREON
WITHOUT THE PRIOR
WRITTEN CONSENT OF
FIFIELD PIAKER ELMAN
ARCHITECTS P.C.
COPYRIGHT © 2013

Project:
RESTORATION HARDWARE
935 BROADWAY
NEW YORK, NY 10010

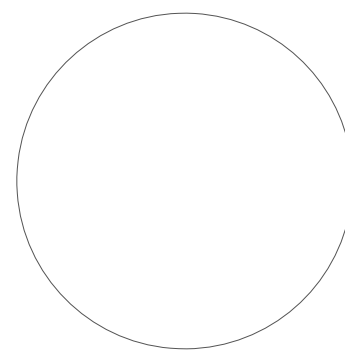
1	ISSUED TO LPC	10.21.16
No:	Description:	Date:
Revisions:		

No:	Description:	Date:
Revisions:		

No:	Description:	Date:
Revisions:		

Job No: 2013009.09
Scale: AS SHOWN
Date: 10.21.2016
Drawn: DP, LB

Sheet Title:
**COVER SHEET, GENERAL NOTES, SITE
PLAN**



Drawing No.:
T-002.00



1 EAST 22ND STREET 6/11/15 - LPC VIOLATIONS DEPT.
SCALE: 1/64"=1'-0"

FIFIELD | PIAKER | ELMAN
ARCHITECTS, PC

740 Broadway
New York, New York 10003
tel 212 979 9272
fax 212 979 9276
www.fpe-architects.com

NO USE, REPRODUCTION
OR DISSEMINATION MAY
BE MADE OF THIS
DRAWING & CONCEPTS
SET FORTH HEREON
WITHOUT THE PRIOR
WRITTEN CONSENT OF
FIFIELD PIAKER ELMAN
ARCHITECTS P.C.
COPYRIGHT © 2013

Project:
RESTORATION HARDWARE
935 BROADWAY
NEW YORK, NY 10010

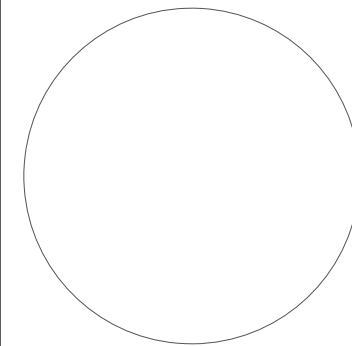
1	ISSUED TO LPC	10.21.16
No: Description:	Date:	
Revisions:		

No: Description:	Date:	
Revisions:		

No: Description:	Date:	
Revisions:		

Job No: 2013009.09
Scale: AS SHOWN
Date: 10.21.2016
Drawn: DP, LB

Sheet Title:
**COVER SHEET, GENERAL NOTES, SITE
PLAN**



Drawing No.:
T-003.00



2 DEMOLITION ELEVATION FIFTH AVENUE
 A5.0



1 PROPOSED ELEVATION FIFTH AVENUE
 A5.0

PROFESSIONAL CERTIFICATION
 DEPARTMENT OF BUILDINGS
 STAMP NUMBER 0 OF 10

TERMINAL IMPROVEMENTS FOR
RESTORATION HARDWARE
 935 BROADWAY • NEW YORK, NEW YORK

NO.	ISSUE	DATE
1	REV	8/24/88
2	REV	12/15/88
3	REV	7/17/89

SHEET TITLE:
 DEMOLITION & PROPOSED ELEVATIONS
 DATE: 11 May 88
 SCALE: 1/4" = 1'-0"
 DRAWN BY: pm/mgn
 JOB NO.: 4501
 SHEET:
A-5.0



(NEW) 9.5" Halo-lit
"RH" ID sign. (See Detail 1, Sht.4)

B
(NEW) 4.6"ht. Non-Illuminated
"THE FLATIRON GALLERY" Sign Copy
(See Detail 2, Sht.5)

A
(NEW) 9.5" Halo-lit
"RH" ID sign. (See Detail 1, Sht.4)

Flatiron NY- Exterior Elevations

FIFTH AVENUE ELEVATION
Scale= 3/16" = 1'-0"

RH Flatiron NYC:

FABRICATION SPECIFICATIONS
MATERIAL/FINISHING SPECS
RH: Fabricated Brushed Stainless Steel Pin Letters 1.5" Deep, Halo-Lit
THE FLATIRON GALLERY: Fabricated Brushed Stainless Steel Pin Letters, 3/8" deep
(RH TO SEE SAMPLES OF FINISHES)
HARDWARE/INSTALL SPECS
Attach with pins
Swan to supply installation details and to install at RH Flatiron NYC site
SIZE
RH: 26"w x 9.5"h x 1.5"d
THE FLATIRON GALLERY: 227.5"w x 4.637"h x 1.5"d



THOMAS-SW AN
SIGN COMP ANY, INC.
2717 Goodrick Avenue, Richmond, CA 94801
510-232-9610 • California License #269069

Project:
**Restoration Hardware
Flatiron NYC**

Location:
**Storefront Signs at
5th Ave Exterior Elevation**

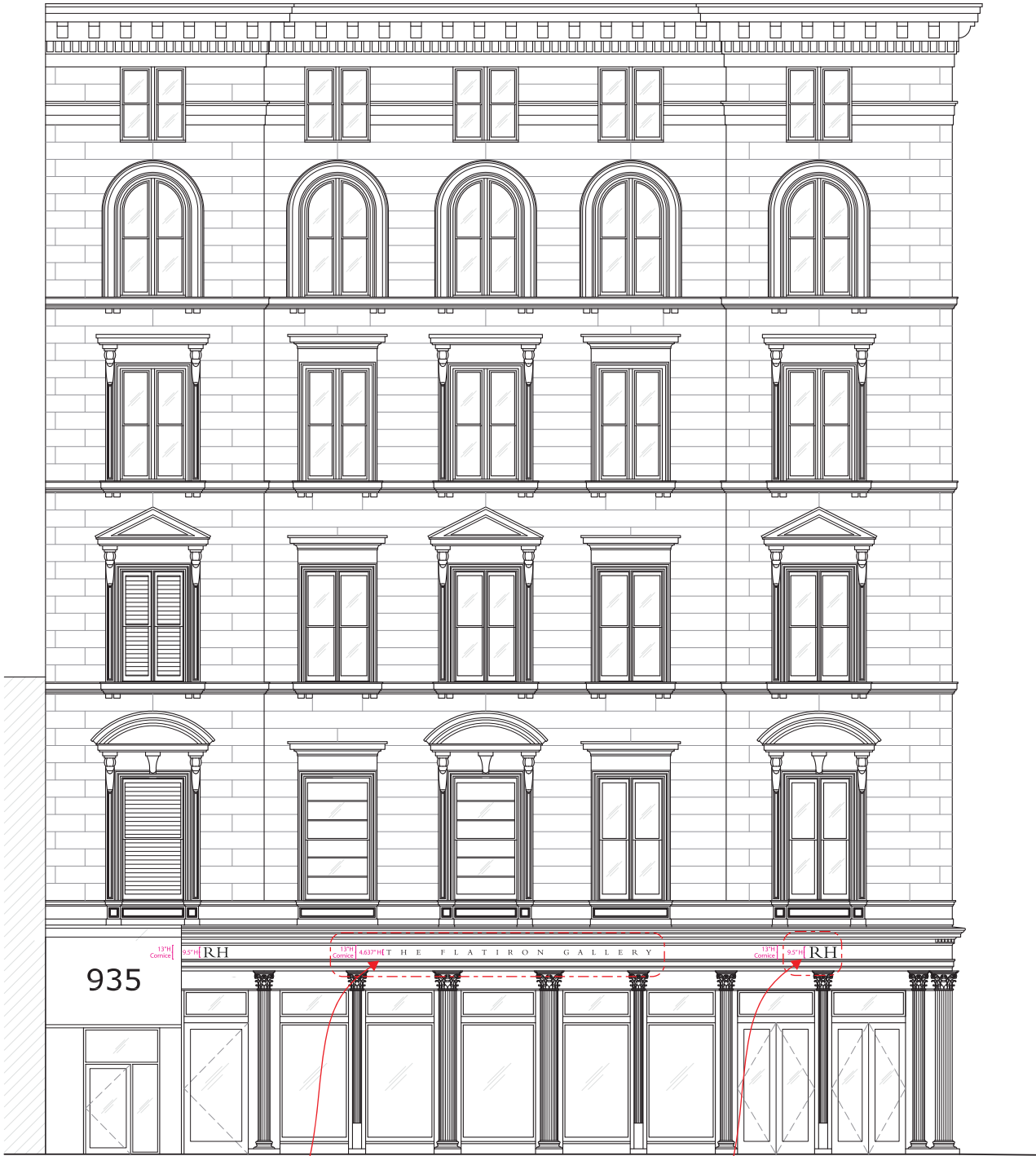
Date: **June 6, 2014**

Note:Initial Building Elevations And Sign Layouts
Provided and designed by: **Jenn Melzer**

Job# **0401**

Sheet:

1.0



A
(NEW) 9.5" Halo-lit
"RH" ID sign. (See Detail 1, Sht.4)

B
(NEW) 4.6"ht. Non-Illuminated
"THE FLATIRON GALLERY" Sign Copy
(See Detail 2, Sht.5)

A
(NEW) 9.5" Halo-lit
"RH" ID sign. (See Detail 1, Sht.4)

Flatiron NY- Exterior Elevations

BROADWAY ELEVATION

Scale= 3/16" = 1'-0"

FABRICATION SPECIFICATIONS (PLEASE READ THOROUGHLY)
MATERIAL/FINISHING SPECS
RH: Fabricated Brushed Stainless Steel Pin Letters 1.5" Deep, Halo-Lit
THE FLATIRON GALLERY: Fabricated Brushed Stainless Steel Pin Letters, ,3/8" deep
(RH TO SEE SAMPLES OF FINISHES)
HARDWARE/INSTALL SPECS
Attach with pins
Swan to supply installation details and to install at RH Flatiron NYC site
SIZE
RH: 26"w x 9.5"h x 1.5"d
THE FLATIRON GALLERY: 227.5"w x 4.637"h x 1.5"d



THOMAS-SW AN
SIGN COMP ANY, INC.
2717 Goodrick Avenue, Richmond, CA 94801
510-232-9610 • California License #269069

Project:
**Restoration Hardware
Flatiron NYC**

Location:
**Storefront Signs at
Broadway Exterior Elevation**

Date: **June 6, 2014**

Note:Initial Building Elevations And Sign Layouts
Provided and designed by: **Jenn Melzer**

Job# **0401**

Sheet:

2.0



A

(NEW) 9.5" Halo-lit
"RH" ID sign. (See Detail 1, Sht.4)

C

(NEW) 4.6"ht. Non-Illuminated
"THE FLATIRON GALLERY" Sign Copy
(See Detail 2, Sht.5)

A

(NEW) 9.5" Halo-lit
"RH" ID sign. (See Detail 1, Sht.4)

22nd STREET ELEVATION

Flatiron NY- Exterior Elevations

Scale= 3/16" = 1'-0"

FABRICATION SPECIFICATIONS

(PLEASE READ THOROUGHLY)

MATERIAL/FINISHING SPECS

RH: Fabricated Brushed Stainless Steel
Pin Letters 1.5" Deep, Halo-Lit

THE FLATIRON GALLERY: Fabricated
Brushed Stainless Steel Pin Letters, 3/8" deep

(RH TO SEE SAMPLES OF FINISHES)

HARDWARE/INSTALL SPECS

Attach with pins

Swan to supply installation details and
to install at RH Flatiron NYC site

SIZE

RH: 26"w x 9.5"h x 1.5"d

THE FLATIRON GALLERY:
156.82"w x 4.637"h x 1.5"d



**THOMAS-SW AN
SIGN COMP ANY, INC.**

2717 Goodrick Avenue, Richmond, CA 94801
510-232-9610 • California License #269069

Project:

**Restoration Hardware
Flatiron NYC**

Location:

**Storefront Signs at
Broadway Exterior Elevation**

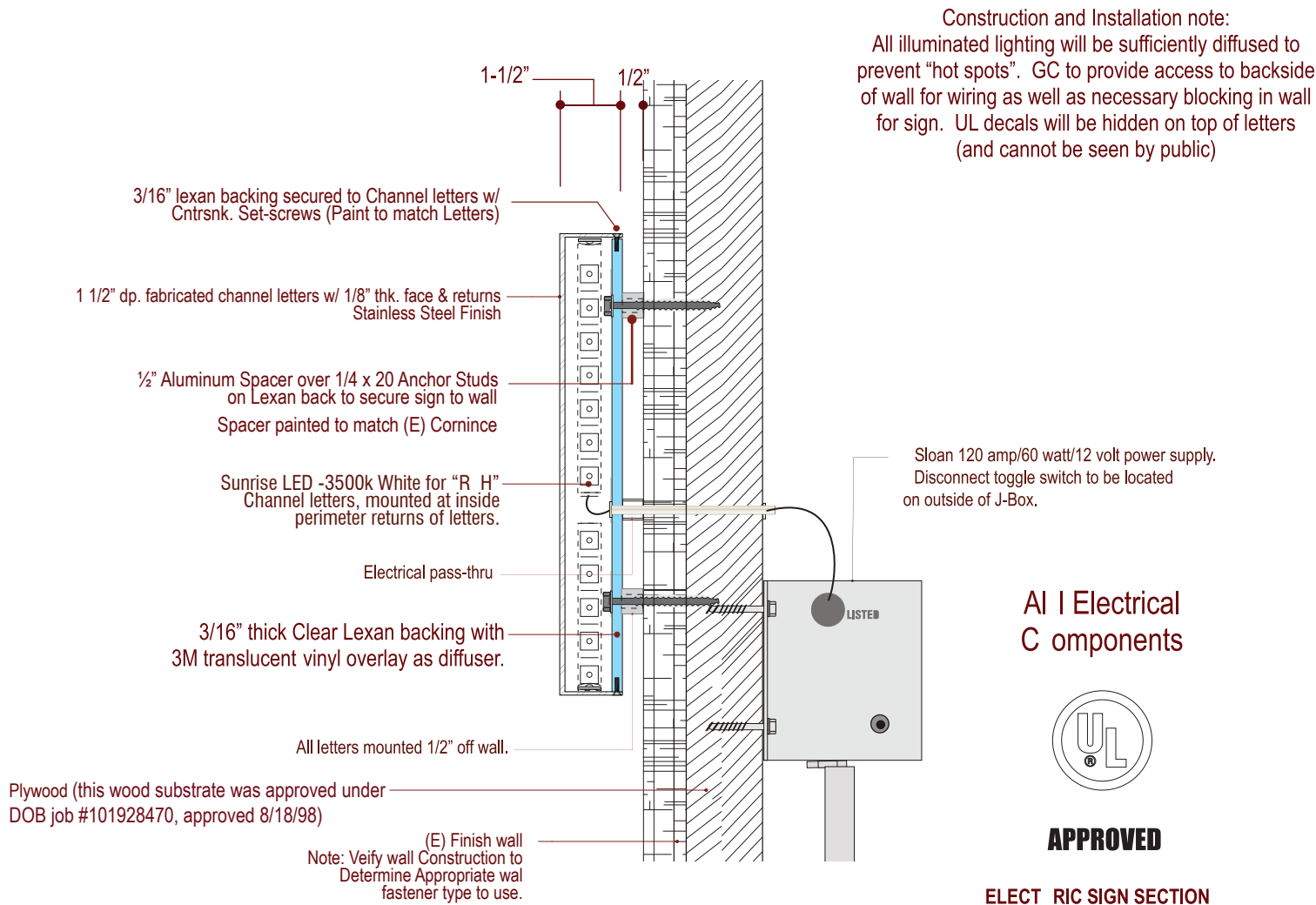
Date: **June 6, 2014**

Note: Initial Building Elevations And Sign Layouts
Provided and designed by: Jenn Melzer

Job# **0401**

Sheet:

3.0



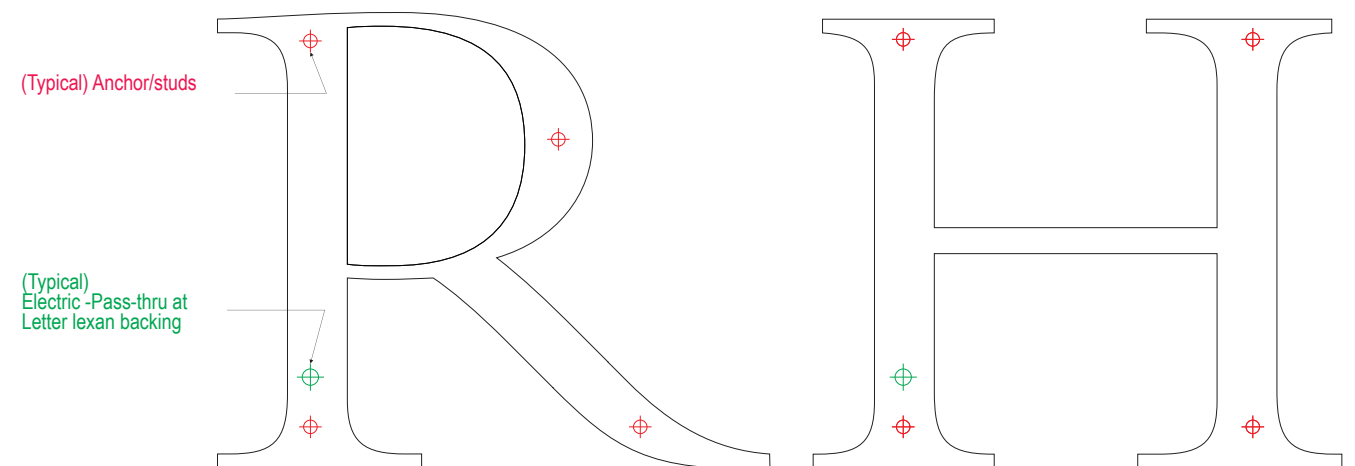
1 **Section I (Typical) Halo-Lit "R H" Letters**
Scale 1:1

Quantity= (6) Sets Total



A **9.5" Ht. Halo -Lit Letter/Logo Layout**
Scale 1:1

Fabricated Brushed Stainless Steel Pin Letters
1.5" Deep
Illuminated with LED Lighting, Halo Lit
(SEE DETAIL 1 For Typical Letter Section at wall)



9.5" Ht. Letter/Logo -Anchor Stud & Power Acces layout
Scale 1:1



THOMAS-SWAN
SIGN COMPANY, INC.
2717 Goodrick Avenue, Richmond, CA 94801
510-232-9610 • California License #269069

Project: Restoration Hardware		Drawing Title: 9.5" ht. " R H" Logo- Halo-Lit (L.E.D.) Letters		Date: 6-6-2014	Job No. 0401	Sheet 4.0
Sales: SE	Drawn By: RM	Scale: As Noted	Revisions:	<input type="checkbox"/> Approved For Construction Name / Date:		

© 2013 Thomas Swan Sign Company Inc. All rights reserved.
This drawing and the concepts, ideas and design development expressed herein are intended for use on this project only, and remain the sole property of Thomas Swan Sign Company. Original design concepts developed from as part of this work remain the property and copyright of their respective owners.

B (NEW) 4.6”ht. Non-Illuminated
“THE FLATIRON GALLERY” Sign Copy

FABRICATION SPECIFICATIONS (PLEASE READ THOROUGHLY)
MATERIAL/FINISHING SPECS
THE FLATIRON GALLERY: Fabricated Brushed Stainless Steel Pin Letters ,3/8" deep (RH TO SEE SAMPLES OF FINISHES)
HARDWARE/INSTALL SPECS
See Detail 2 for Typical Pin-mounted Letters connection
SIZE
THE FLATIRON GALLERY: 227.5"w x 4,637"h x 1.5"d



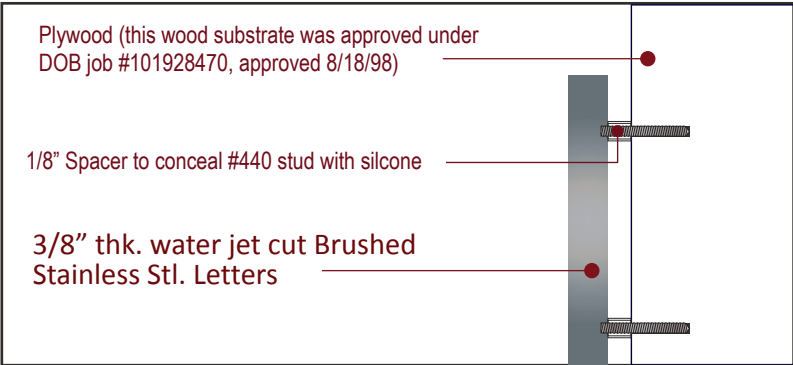
2 sets of lettering needed
1 set = Broadway, 1 set = 5th Ave.
TYPE APPEARS IN ONE LINE
(WILL NOT FIT ON ARTBOARD)

C (NEW) 4.6”ht. Non-Illuminated
“THE FLATIRON GALLERY” Sign Copy

FABRICATION SPECIFICATIONS (PLEASE READ THOROUGHLY)
MATERIAL/FINISHING SPECS
THE FLATIRON GALLERY: Fabricated Brushed Stainless Steel Pin Letters, ,3/8" deep (RH TO SEE SAMPLES OF FINISHES)
HARDWARE/INSTALL SPECS
See Detail 2 for Typical Pin-mounted Letters connection
SIZE
THE FLATIRON GALLERY: 156.82"w x 4,637"h x 1.5"d



1 set of lettering needed
1 set goes on 22nd St



2 Section - Stud Mounted Letter

Scale: 1:2



THOMAS-SW AN
SIGN COMP ANY, INC.
2717 Goodrick Avenue, Richmond, CA 94801
510-232-9610 • California License #269069

Project:
**Restoration Hardware
Flatiron NYC**

Location:
**Storefront Signs at
Broadway Exterior Elevation**

Date: **June 6, 2014**

Note: Initial Building Elevations And Sign Layouts
Provided and designed by: **Jenn Melzer**

Job# **0401**

Sheet:

5.0



EAST 22nd AND BROADWAY AT DUSK



EAST 22nd AND BROADWAY AT NIGHT