



Parks Without Borders Fort Greene Park

Landmarks Preservation Commission
Public Hearing
September 19, 2017

Parks

Parks Without Borders: Program Goals

Accessible Parks

Make parks more welcoming and accessible to everyone

Improved Neighborhoods

Extend the beauty of parks out into communities

Vibrant Community Spaces

Transform underused spaces into centers of community



Parks Without Borders



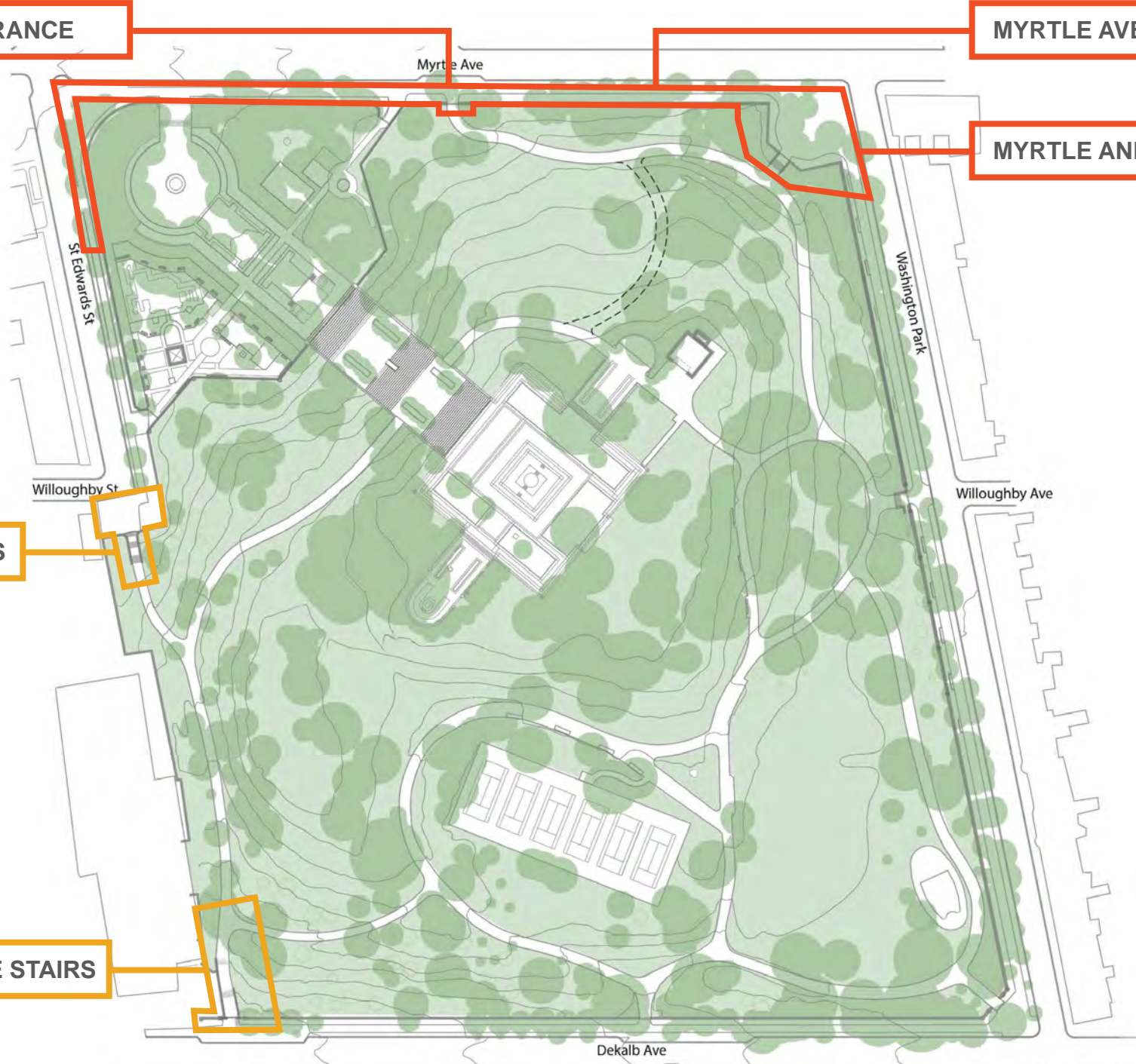
MYRTLE AVENUE MID-BLOCK ENTRANCE

MYRTLE AVENUE SIDEWALK

MYRTLE AND WASHINGTON PARK OVAL

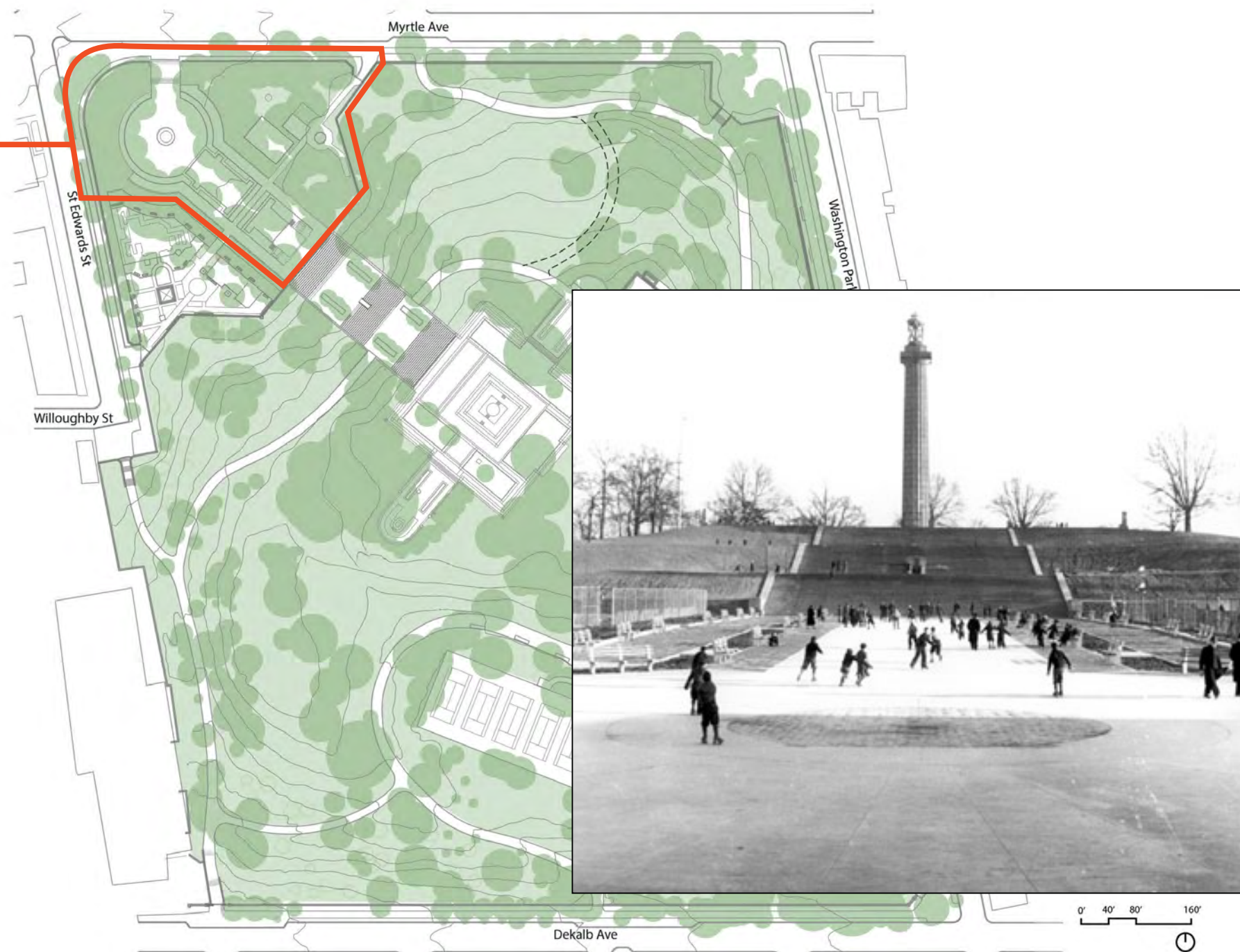
WILLOUGHBY STREET STAIRS

DeKALB AVENUE STAIRS



FORT GREENE PARK | PWB - Replacement In-Kind

LOWER PLAZA / PICNIC AREA /
FITNESS / BASKETBALL



EXISTING CONDITIONS & PERTINENT SITE PHOTOS



Entrance Stair
-Not ADA Compliant

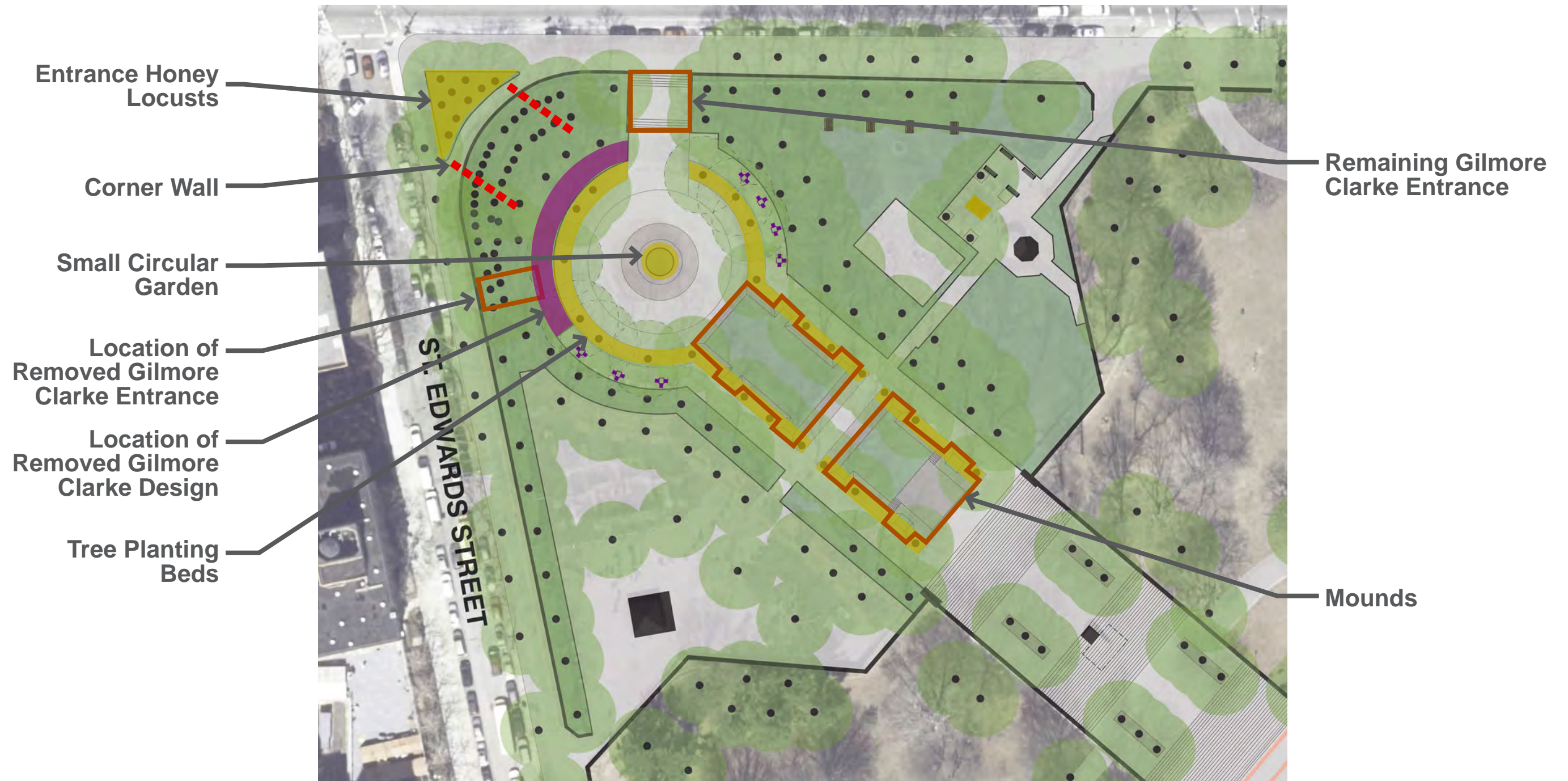
Small Circular
Garden

Gilmore Clarke
Wall



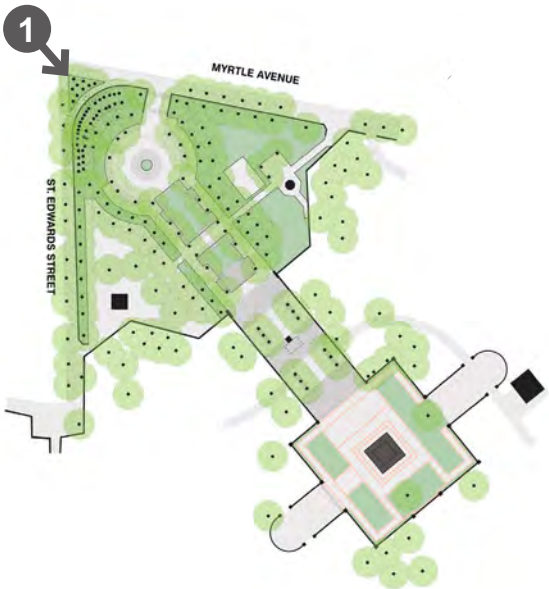
Original Olmsted
Stone Wall

Mounds
-Not used often
-Inhibits use of
Plaza





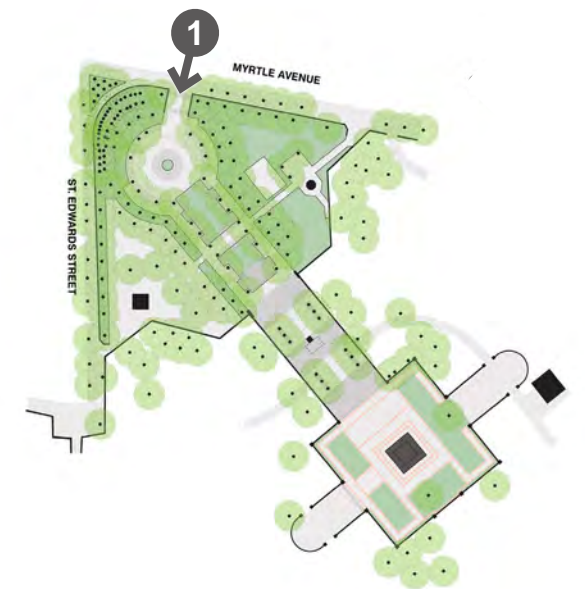
1 - CORNER OF MYRTLE AVENUE & ST. EDWARDS



FORT GREENE PARK | PWB - Lower Plaza - Site Photos



1 - MYRTLE AVENUE GILMORE CLARKE ENTRANCE



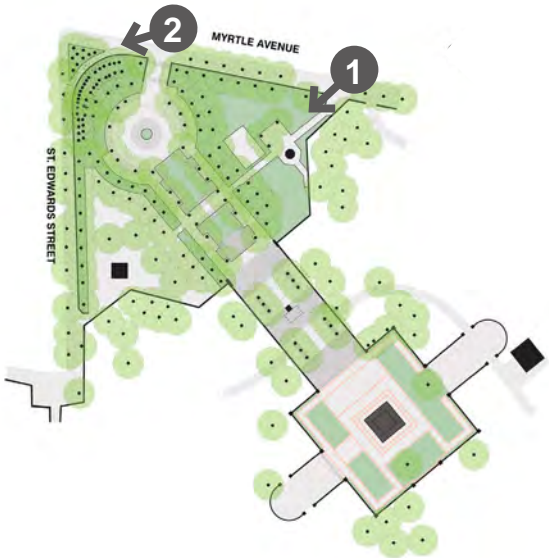
FORT GREENE PARK | PWB - Lower Plaza - Site Photos



1 - OLMSTED WALL - 1867



2 - GILMORE CLARKE WALL - 1936

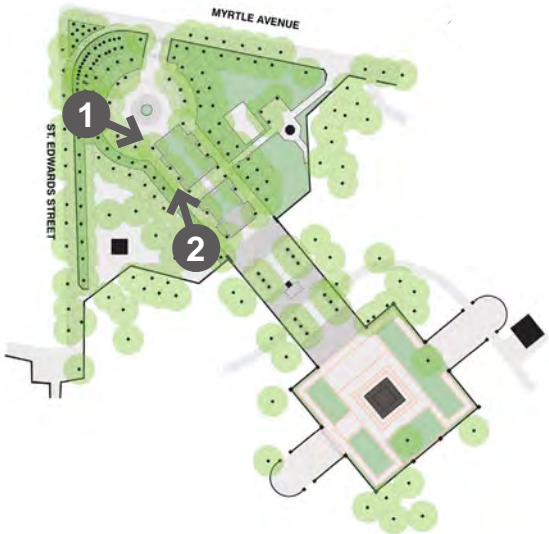




1 - CENTRAL PLAZA MOUNDS

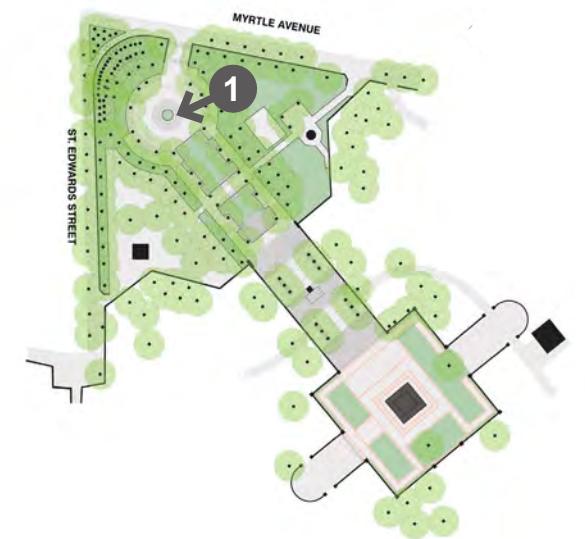


2 - GRANITE BLOCK PLANTING STRIPS





1 - CIRCULAR PLAZA AREA AT CORNER

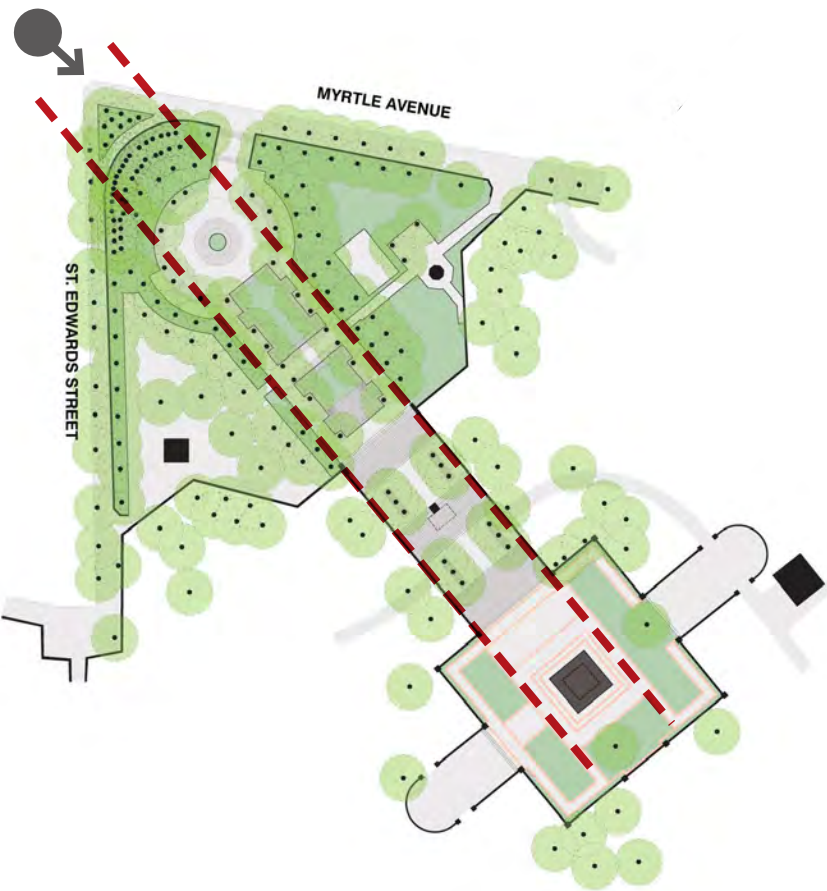


VIEW CORRIDOR



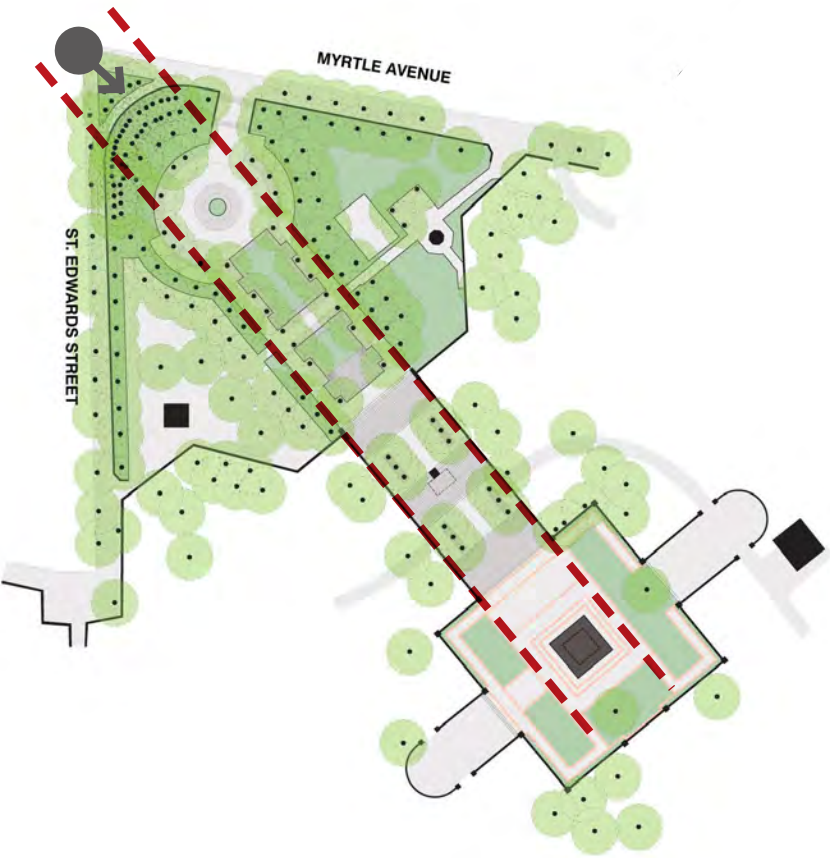


VIEW OF MONUMENT FROM MYRTLE AVENUE



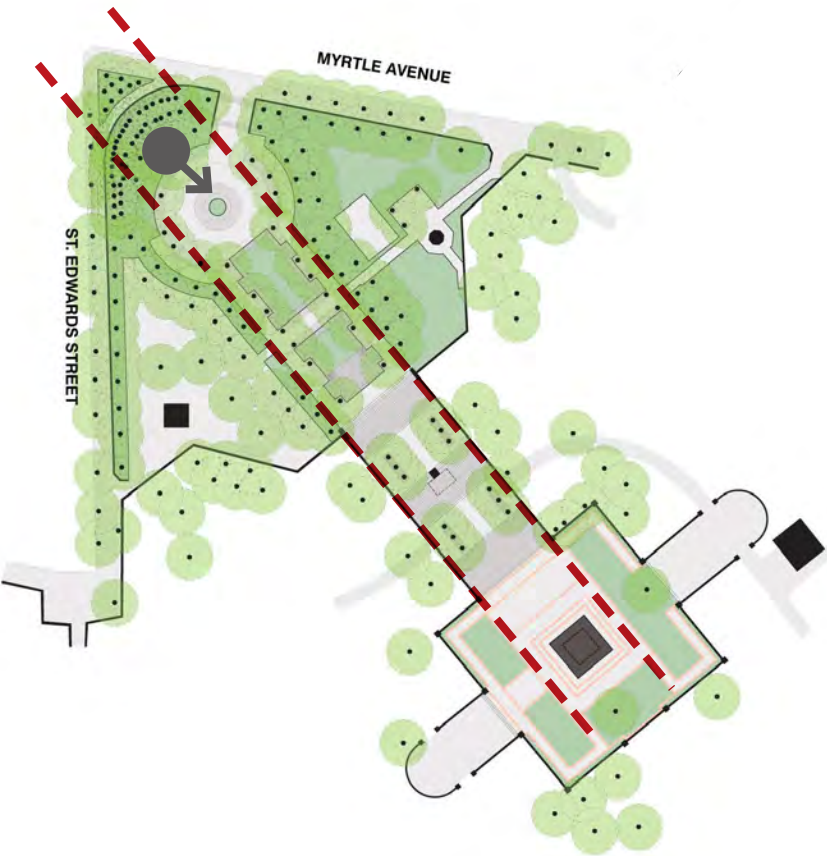


VIEW OF MONUMENT FROM SIDEWALK



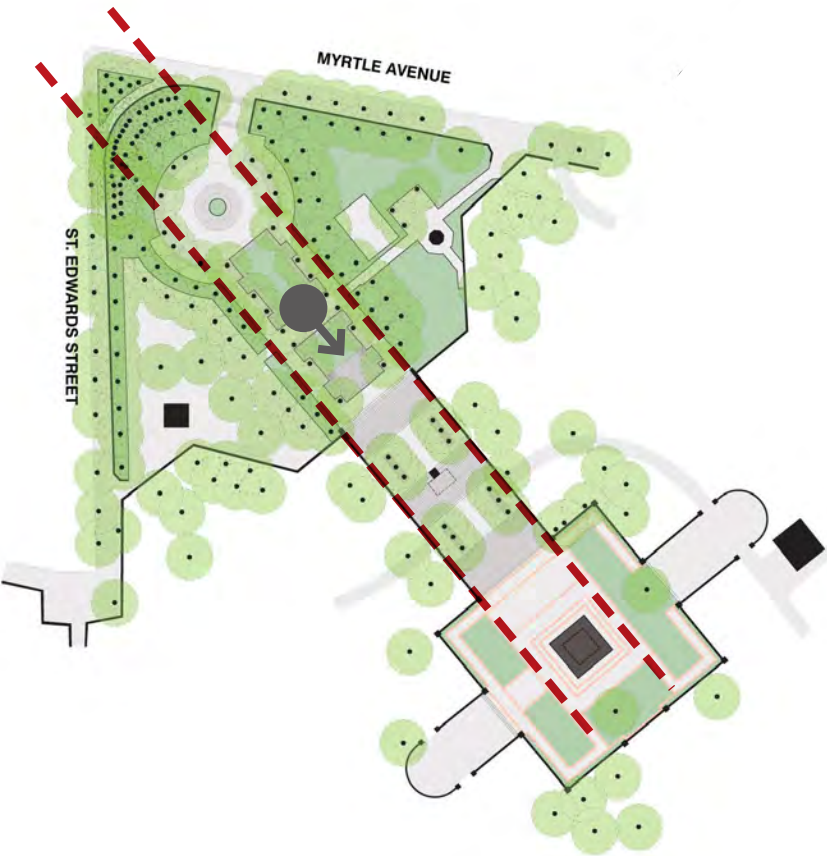


VIEW OF MONUMENT FROM CIRCULAR GARDEN



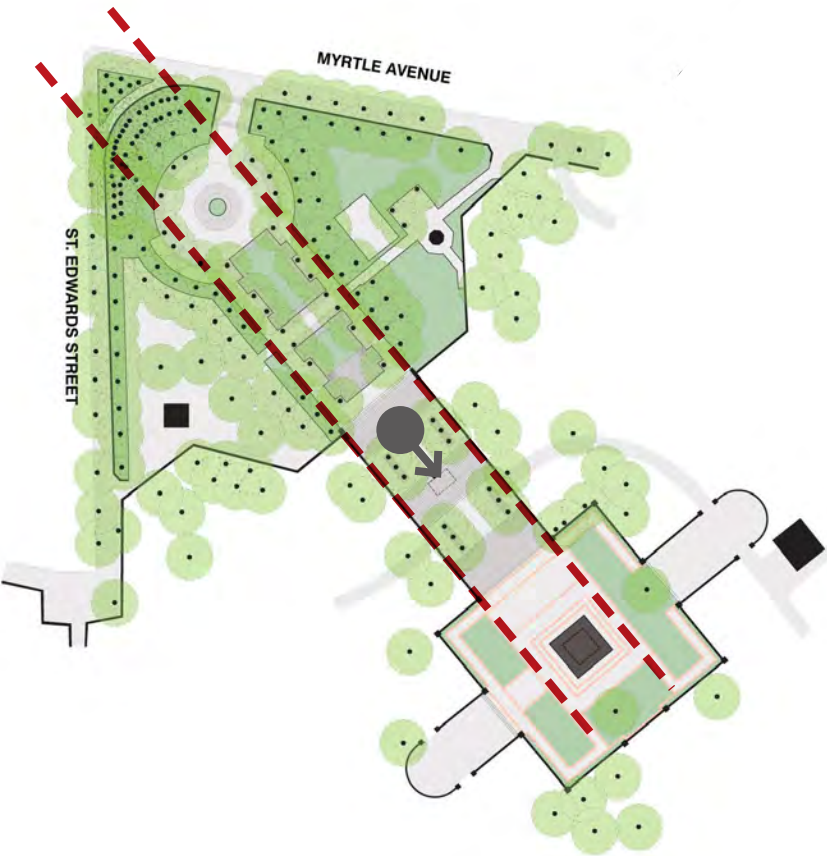


VIEW OF MONUMENT FROM MOUND

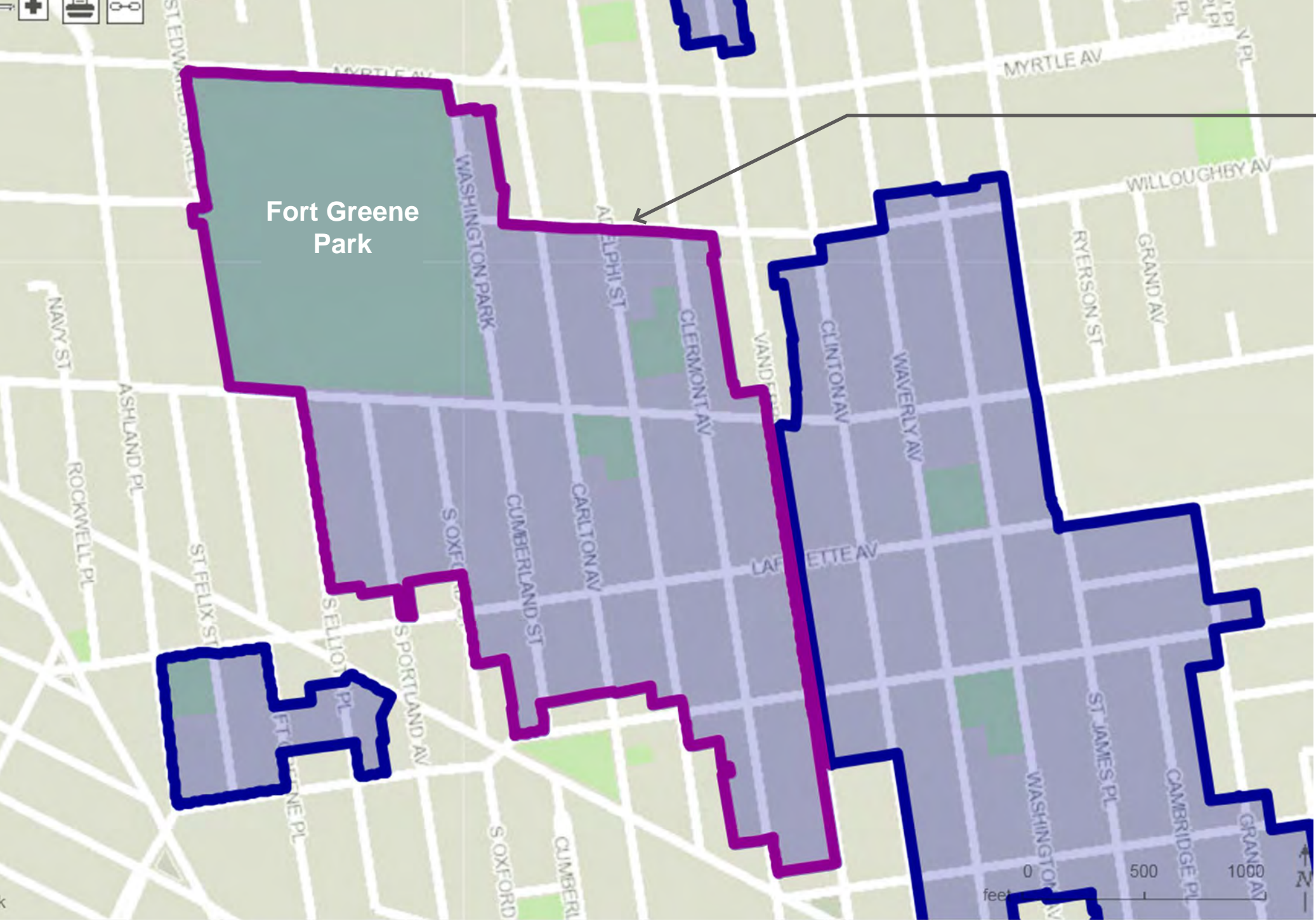




VIEW OF MONUMENT FROM LOWER STAIR LANDING



FORT GREENE PARK HISTORY



FORT GREENE HISTORIC DISTRICT

Fort Greene
Park

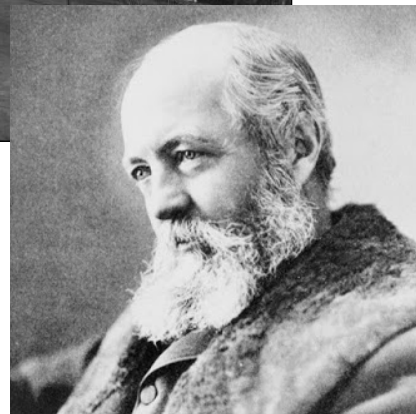


FORT GREENE PARK | Landmark District





Original Design: 1867



FREDRICK LAW OLMSTED



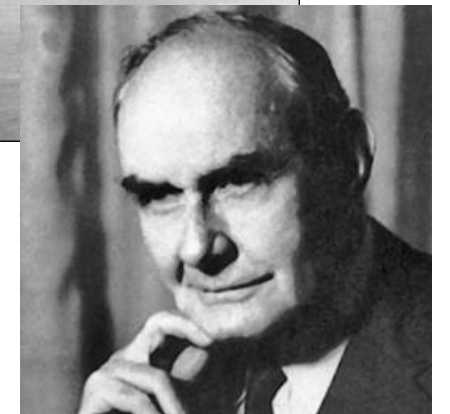
1908 Monument & Stairs



MCKIM, MEAD, & WHITE



1936 Lower Plaza



GILMORE CLARKE



Olmsted and Vaux Monument - 1867



McKim, Mead, and White Built Monument - 1908



Monument Plaza - Gilmore Clarke, 1936



FORT GREENE PARK | Prison Ship Martyrs' Monument and Plaza Evolution



Gilmore Clarke - Lower Plaza - 1930's



Gilmore Clarke - Upper Plaza - 1930's



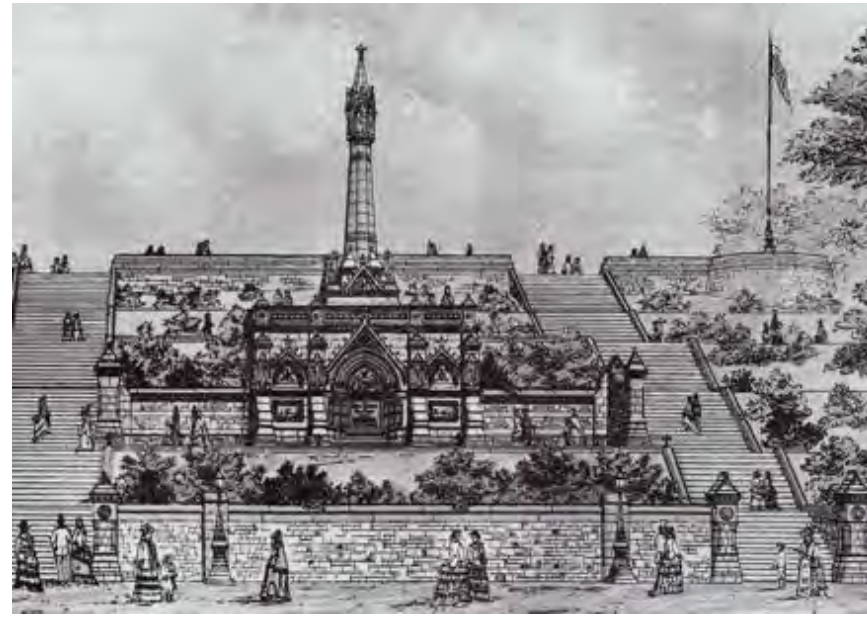
FORT GREENE PARK | Prison Ship Martyrs' Monument and Plaza Evolution

PRISON SHIP MARTYRS' MONUMENT THE MEMORIAL





1820's



Olmsted Concept Drawing of Monument



Olmsted scaled down Prison Ship Martyrs' Monument Designed - 1867

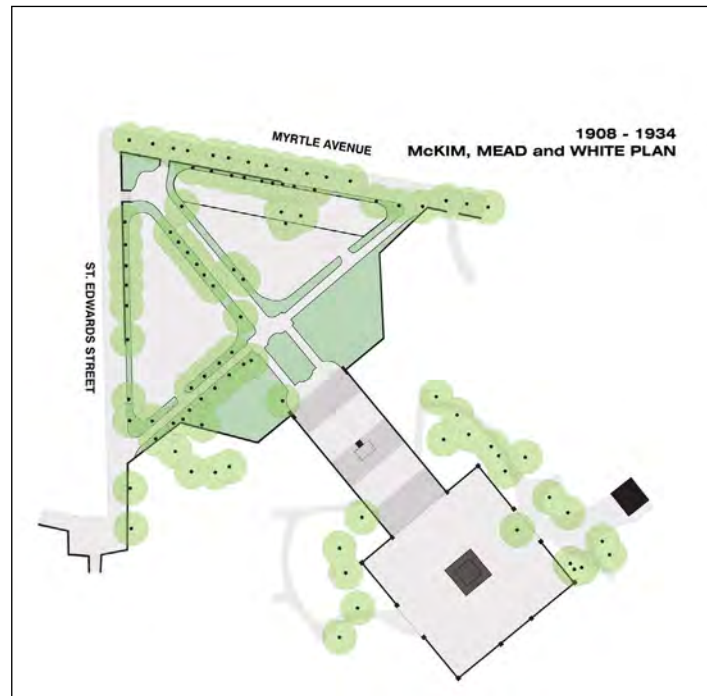


McKim, Mead, and White Built Monument - 1908

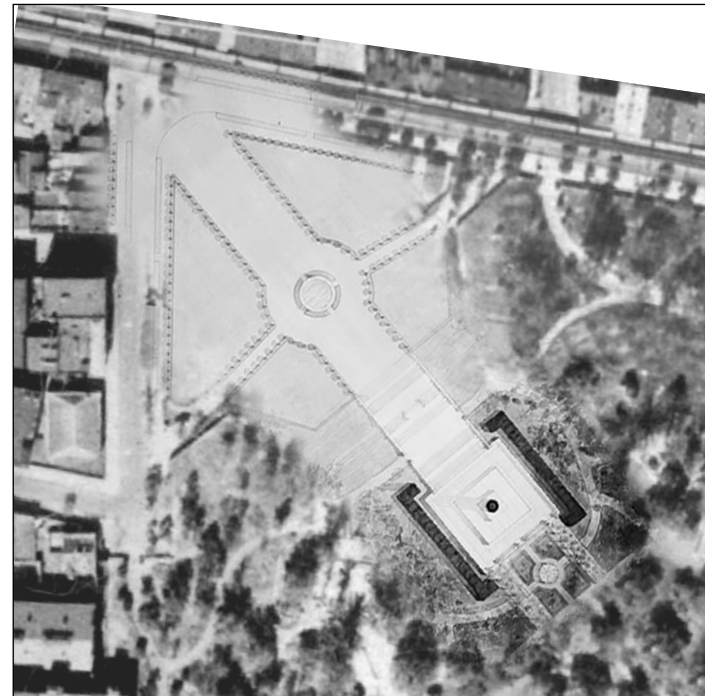
FORT GREENE PARK: LOWER PLAZA EVOLUTION & DESIGN



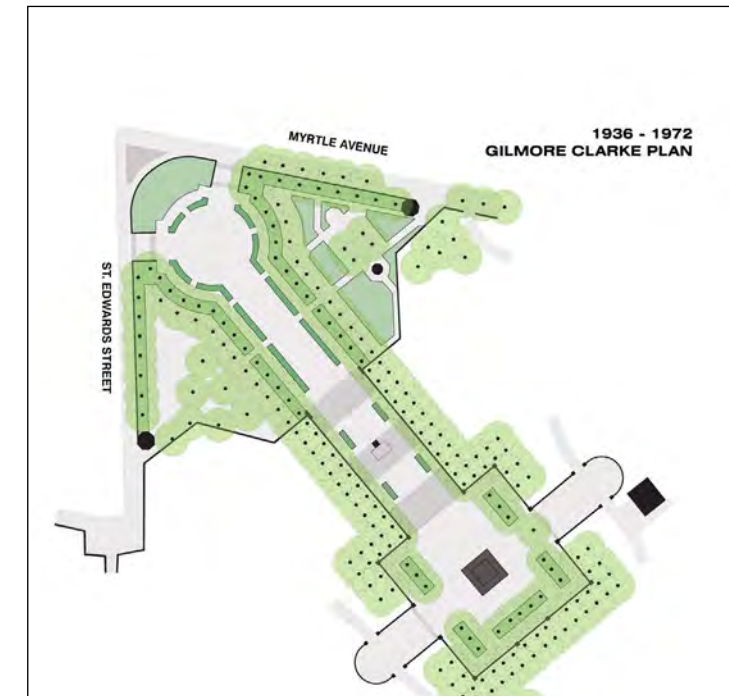
Reconciling Multiple Generations of Design & Intent



McKim, Mead, & White Monument & Stair - 1908



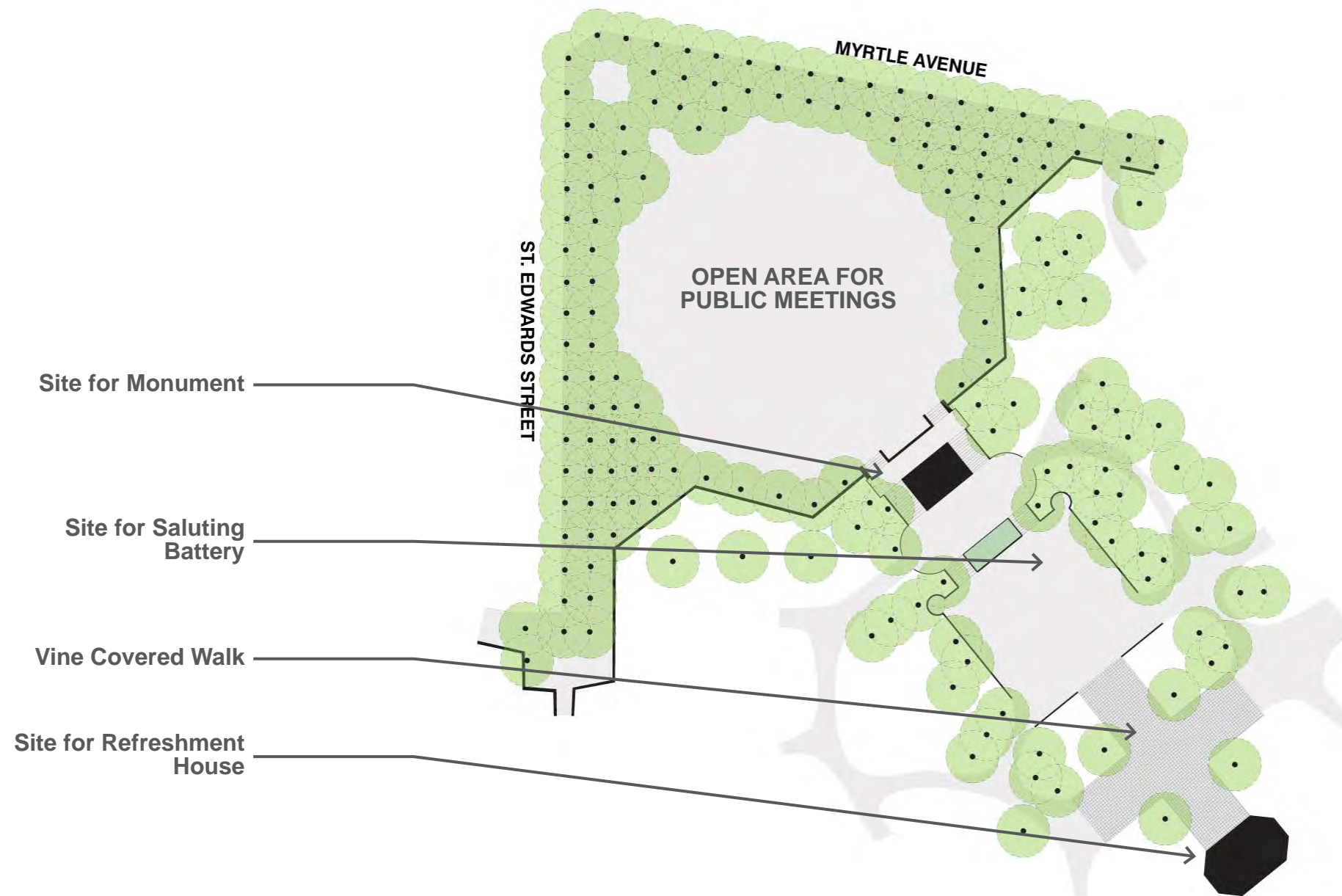
McKim, Mead, & White Unrealized Schematic



Gilmore Clarke - 1936

Design Objectives

- Respect the Design Intent of the Martyrs Memorial
- Honor & Reconcile Multiple Generations of Design
- Improve Connections to the Community
- Improve Safety & Accessibility
- Address Modern Day Use of the Park
- Community Needs



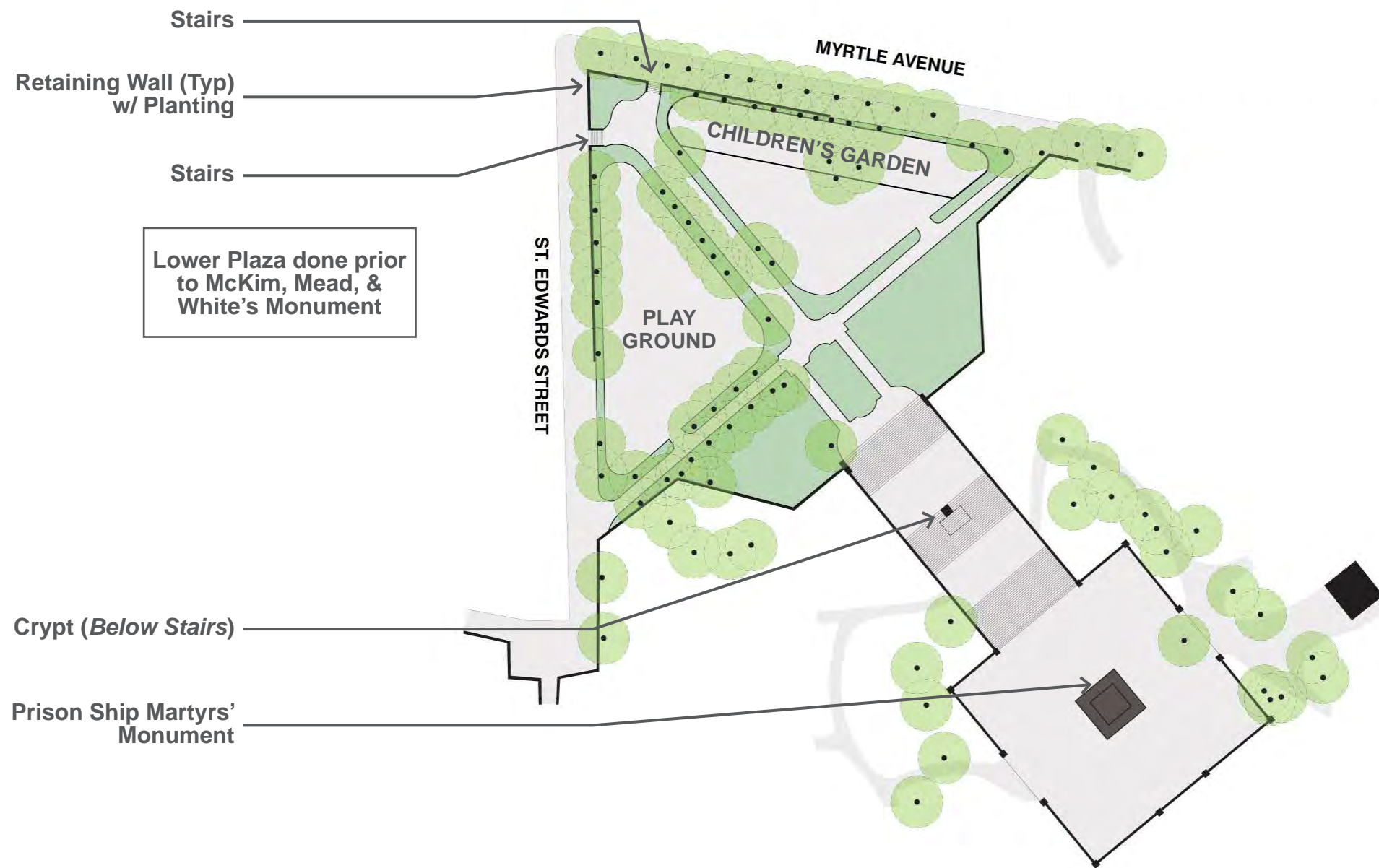
FORT GREENE PARK | PWB - Olmsted and Vaux Plan - 1867



Earliest Photograph of Lower Plaza and Stair



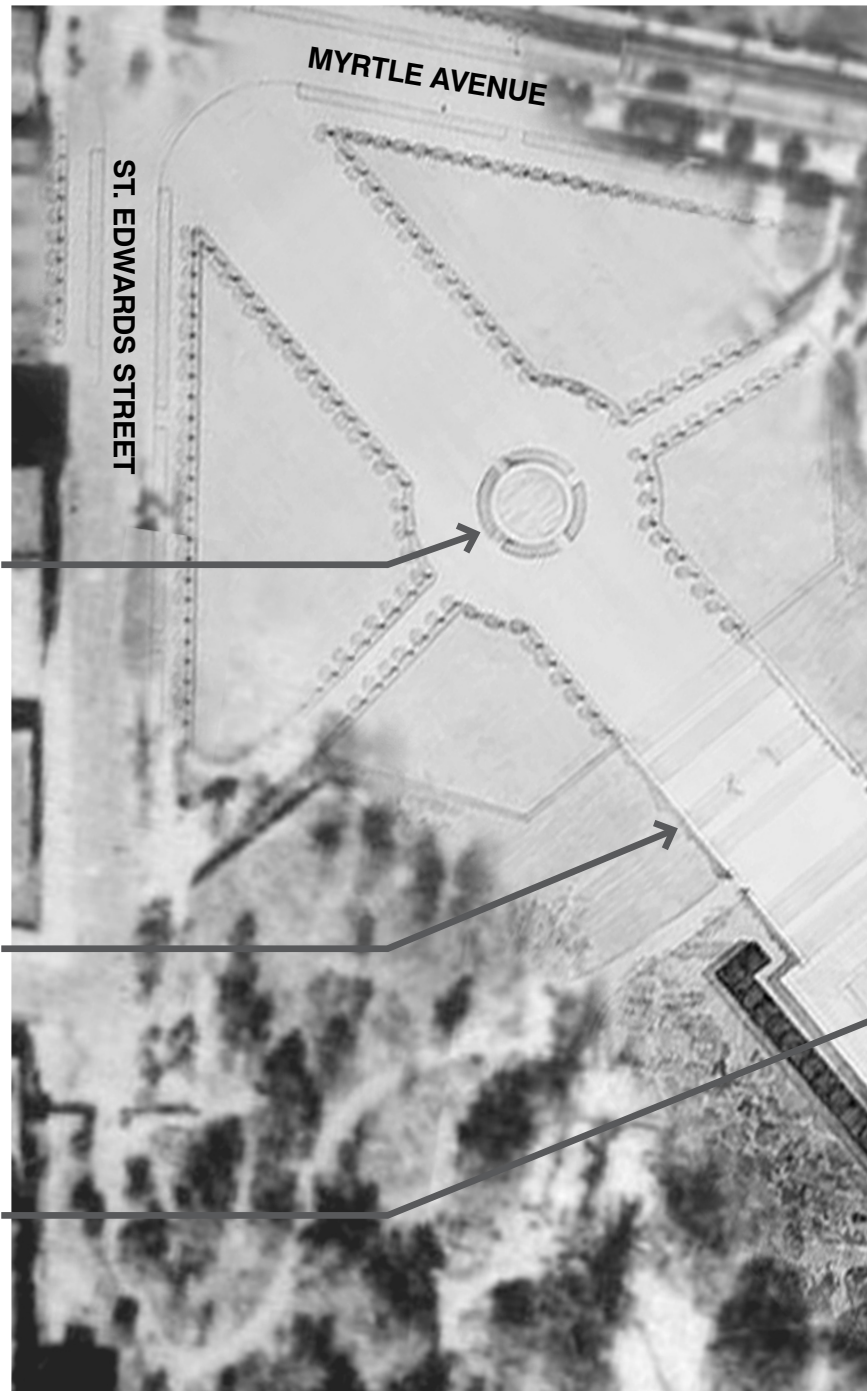
1900 - Lower Plaza



1908 Monument's Opening Ceremony



1924 Aerial

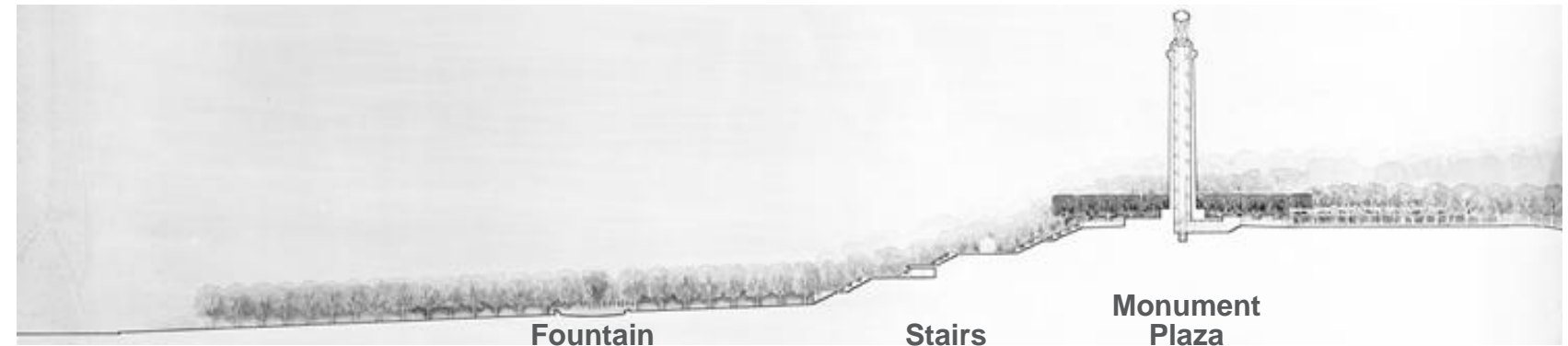


Fountain

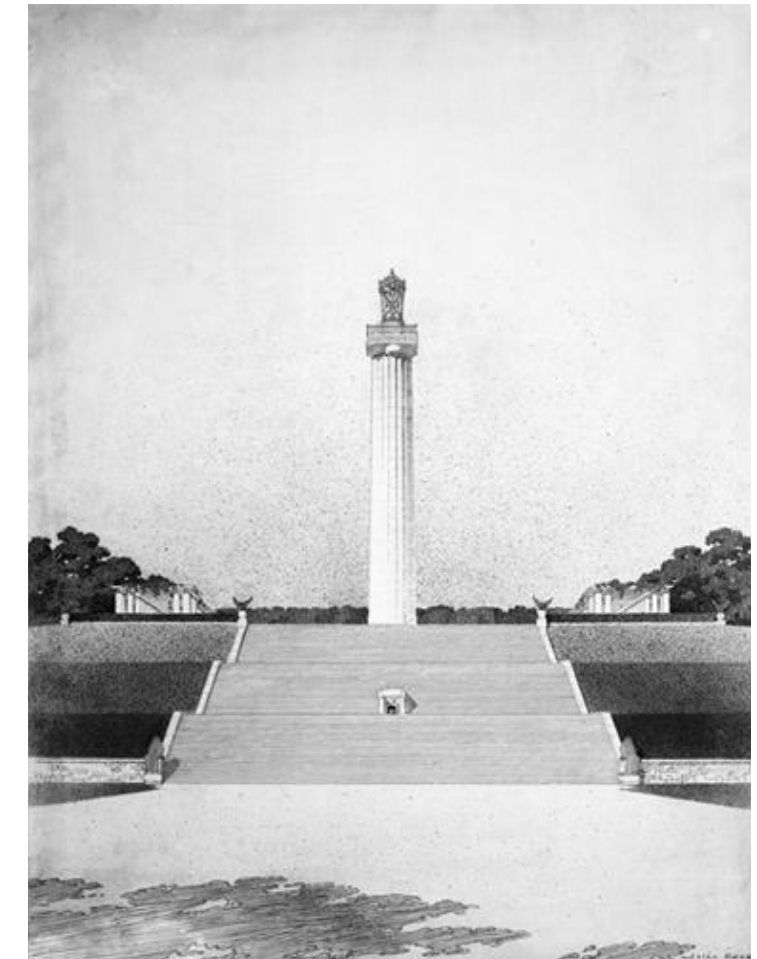
Stairs

Prison Ship Martyrs' Monument

Proposed 1909 Plan on 1924 Aerial



Proposed Section



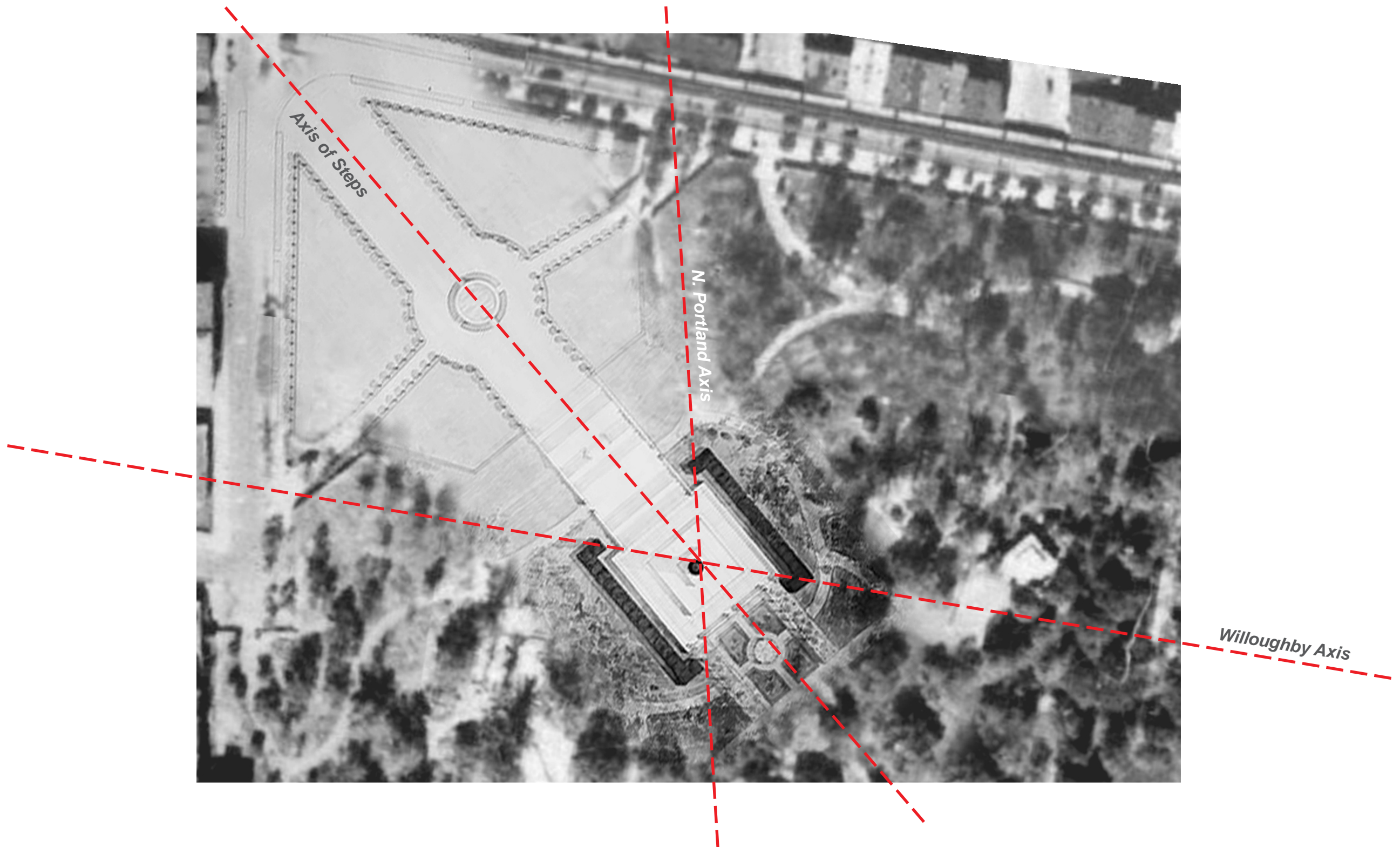
Proposed Elevation - View from Lower Plaza

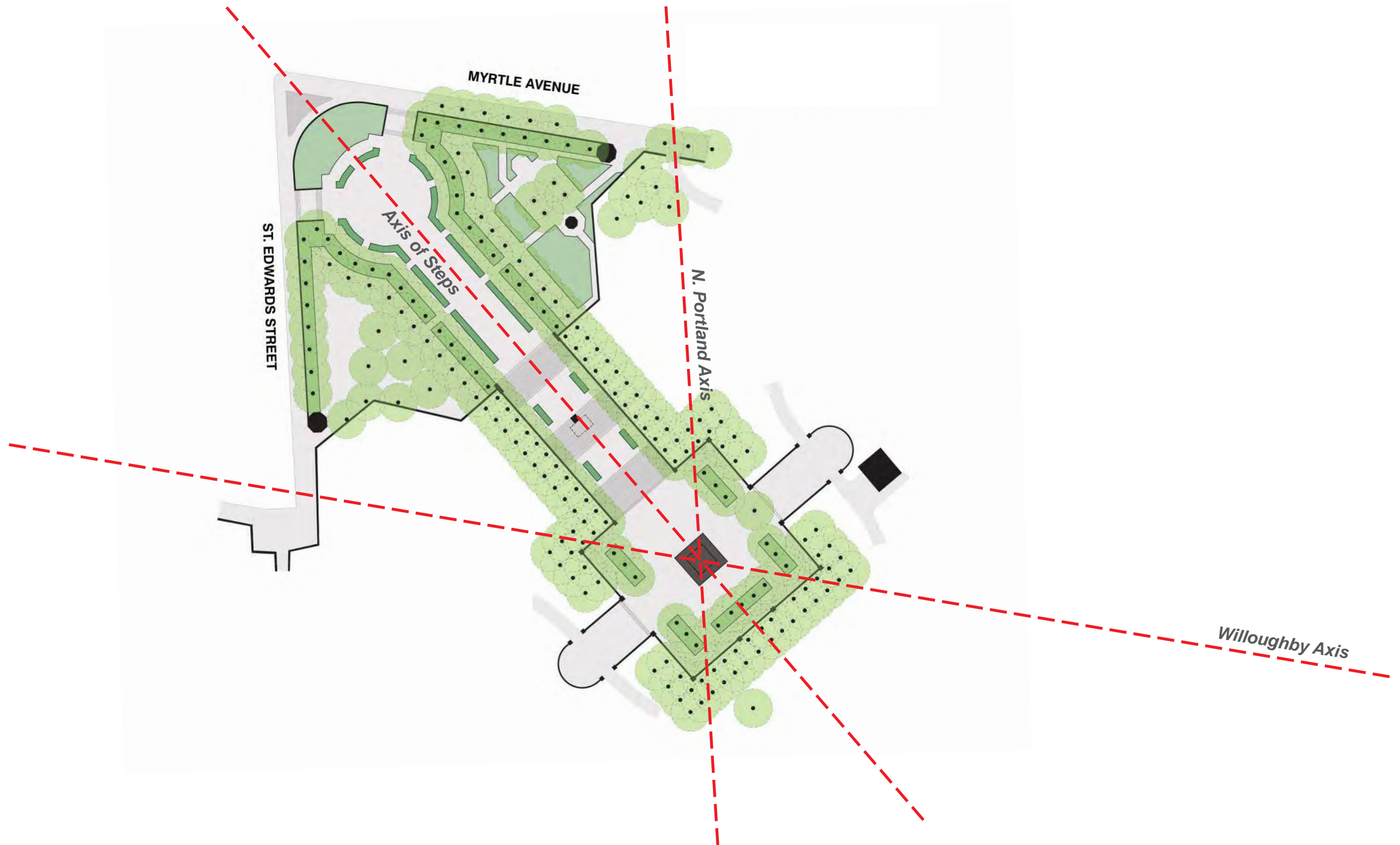


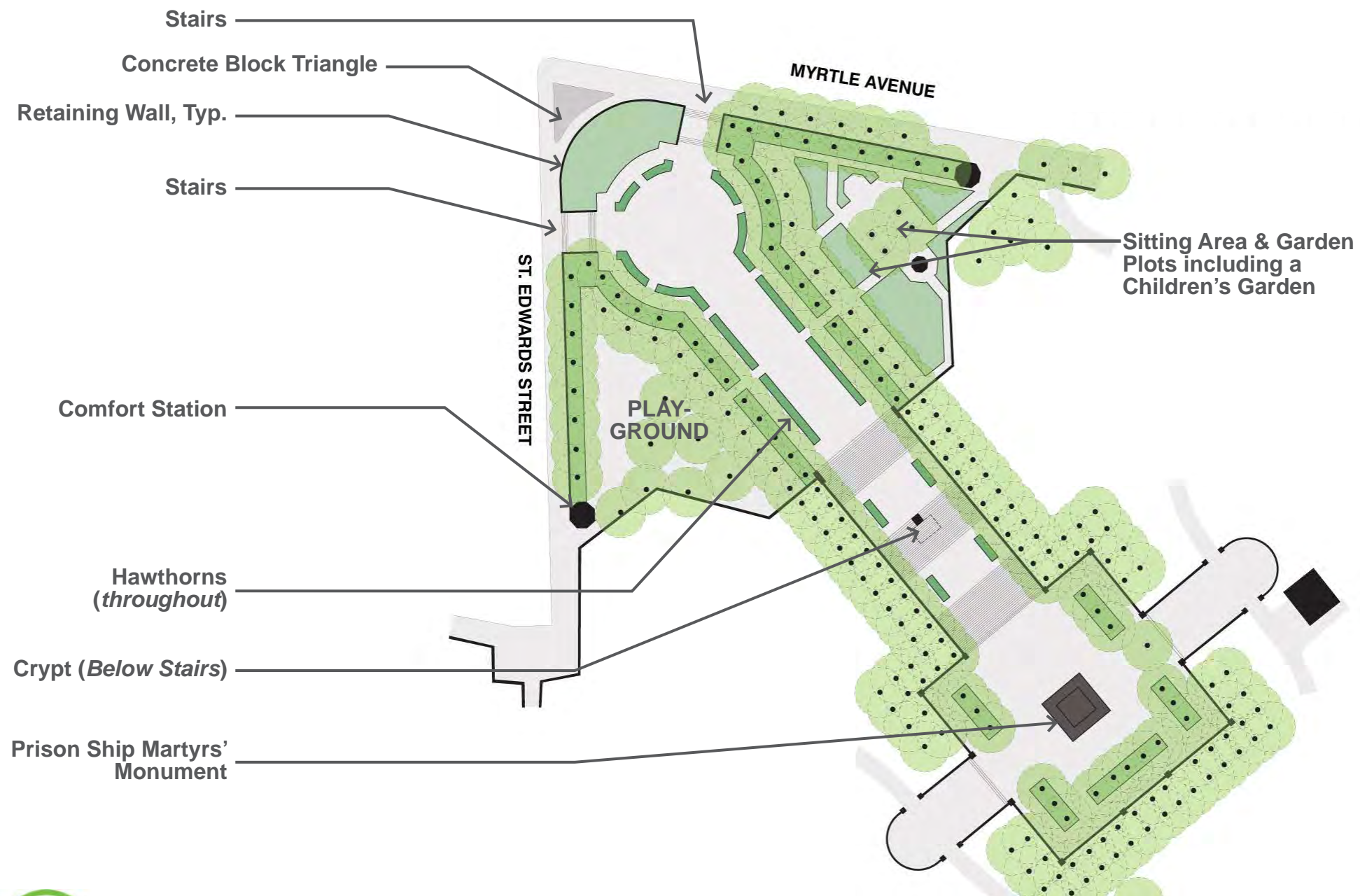
“It is a rare chance to combine..... a column and a great flight of steps, both of which are of the most beautiful things in architecture, and this great shaft, crowning the hill, would be as impressive from the distance as nearby, and would stand as a shaft of light by day and a torch by night, and would be an ever present reminder of the loyalty of the martyrs, and of the causes for which they gave their lives.”

**-McKim, Mead, & White
Art Commission Submission Narrative, 1905**





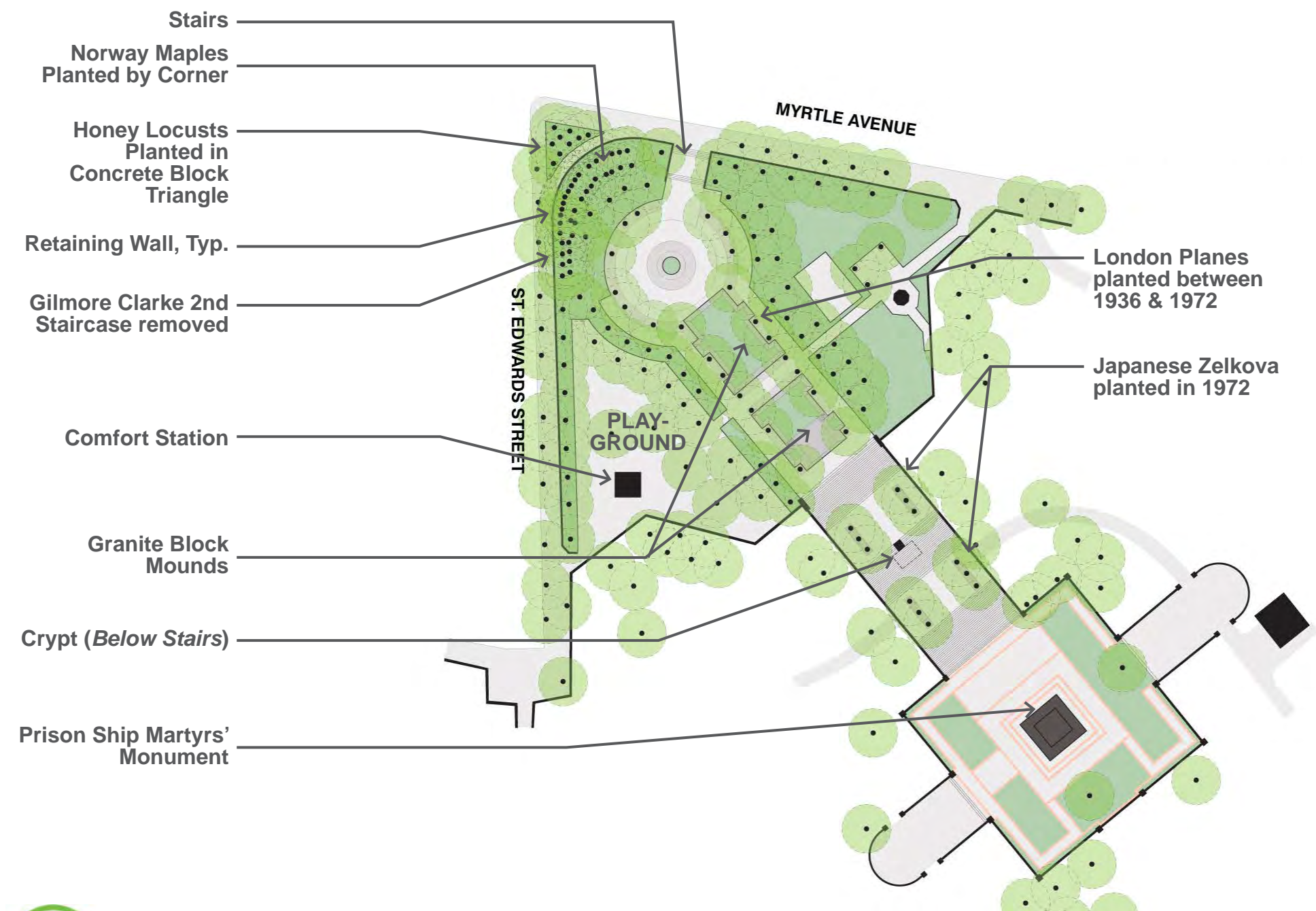




1937 Skaters, Planting Strips and Benches



1930's Lower Plaza



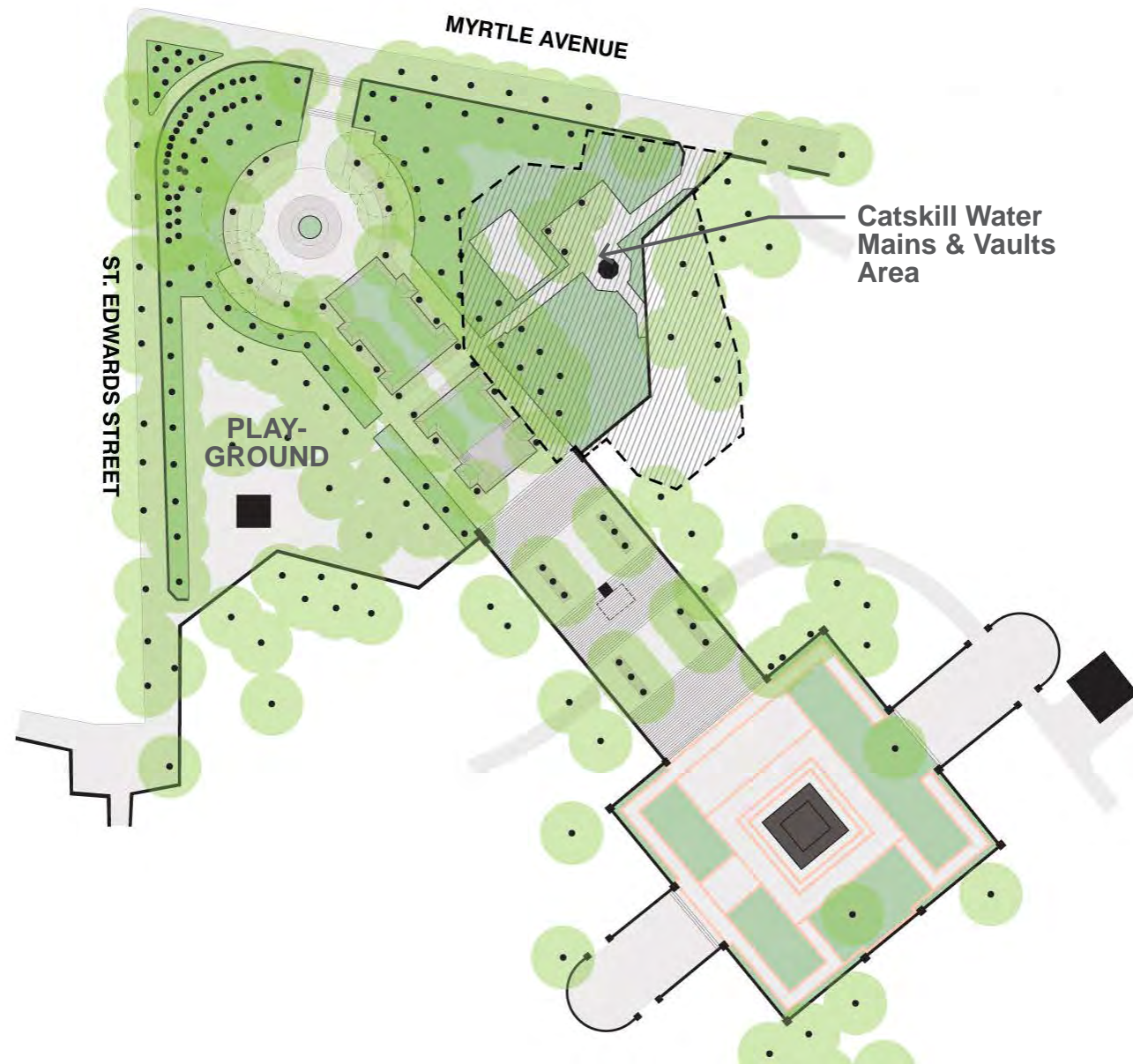
FORT GREENE PARK | PWB - 1972 A. E. Bye Plan - Existing Condion



1978 Aerial



View towards Monument from Lower Plaza



Water Tunnel Construction circa 1910



Detail of Water Mains and Vault Under Plaza



Tables and chairs off sidewalk

45 FT Wide entrance at corner with Granite Stairs

Entrance Plantings with new ornamental and shade trees

10ft. Wide ADA Compliant Ramp at location of former entrance

New Park Lighting

New Tree (typ)

Flush Water Feature with up-lighting

New Connection to Playground

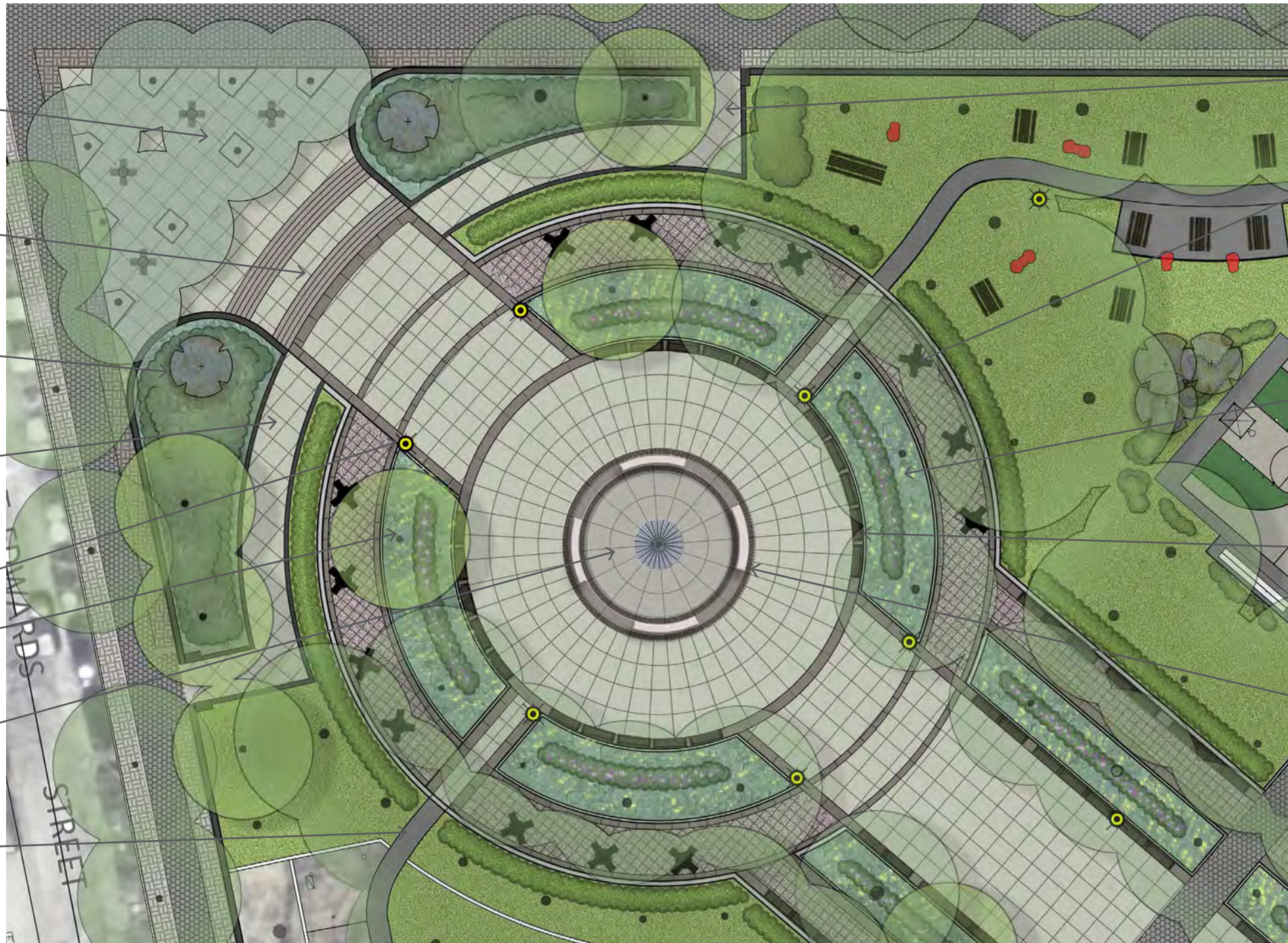
10ft Wide ADA Compliant Ramp at location of former entrance

Intimate Quadrants with Tables and Chairs. Separated while still incorporated into overall plaza

Formal Planting with woodland feel

Benches along interior plaza viewing water feature

Granite Backless Benches



ADA Compliant walk through 'Permanent Picnic areas
-Connects Plaza with Diagonal walk

Reconstructed Basketball Court

New Plantings in areas that do not conflict with DEP infrastructure

Central Plaza with New Security Lighting

1939 World's Fair Benches along Plaza

Permanent Picnic Tables, Grills, and Ash Disposal Bins

Senior Fitness Area

Adult Fitness Area

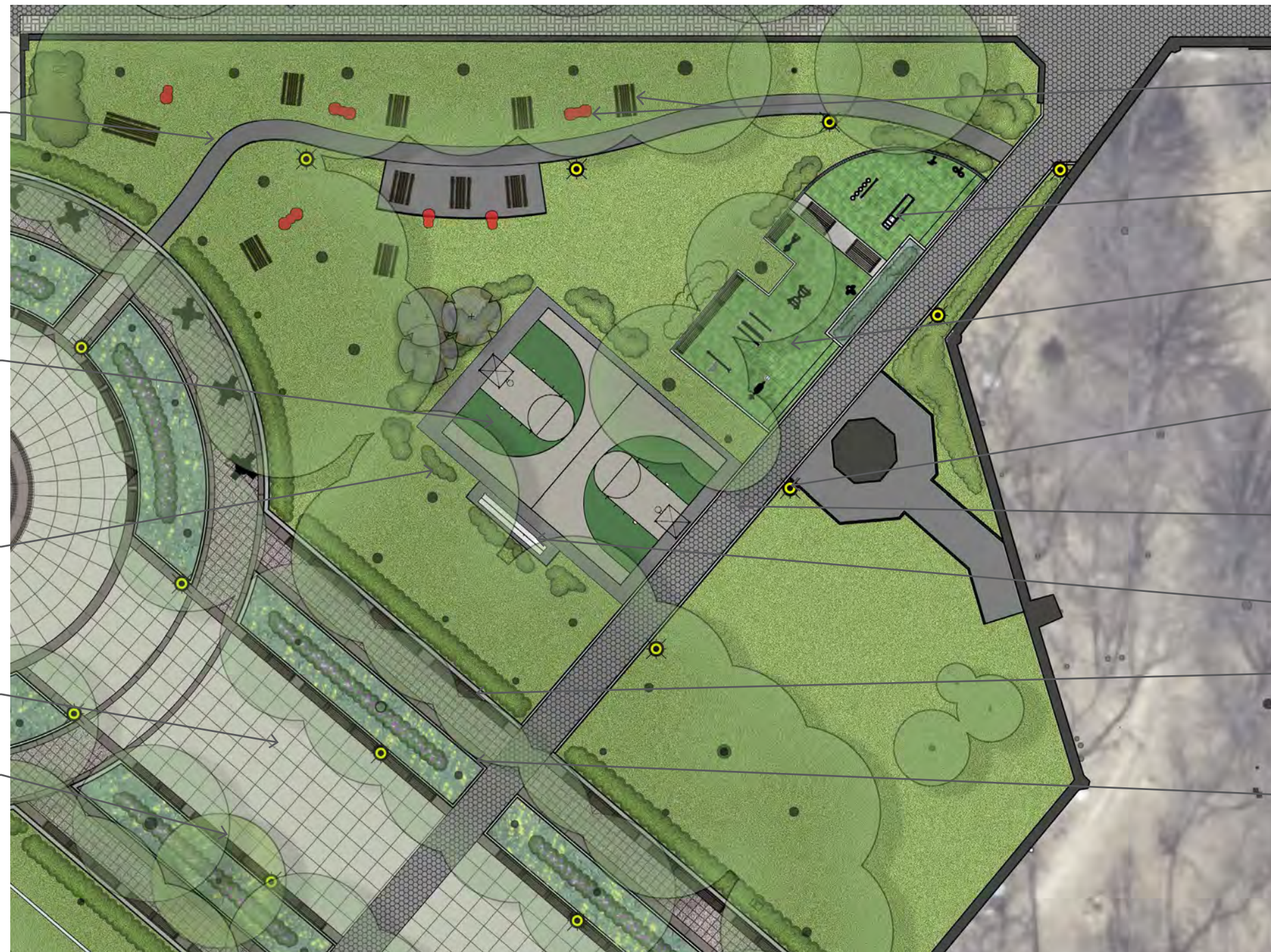
Improved Park Lighting along diagonal Walk

Asphalt Hex Block Diagonal Walk
-Same material used along sidewalks

Benches

More intimate Garden Seating areas along perimeter of plaza

Planting Beds replace existing Granite Block Strips with low pipe rail fencing (typ)





LEGEND

- 1'-6" Pipe Rail Fence
- 2'-6" Pipe Rail Fence



FORT GREENE PARK | PWB | Lower Plaza - Fencing Diagram





Myrtle & St. Edwards Corner - Existing



Myrtle & St. Edwards Corner - Proposed



FORT GREENE PARK | PWB | Myrtle & St. Edwards Corner entrance - Before & After







Circular Plaza - Existing



Circular Plaza - Proposed







Picnic Area - Existing



Picnic Area - Proposed







Entrance Ramp Area - Existing

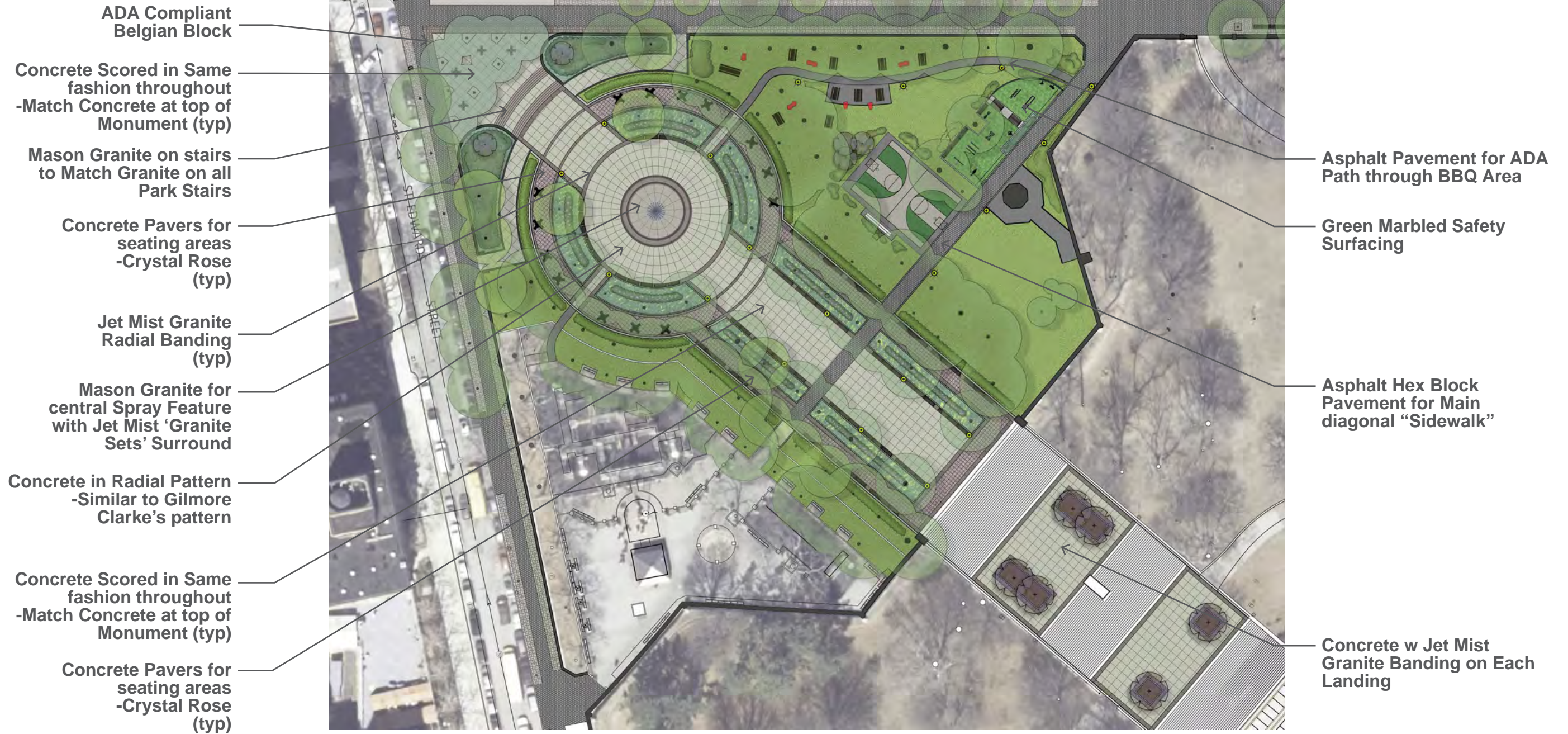


Entrance Ramp Area - Proposed



FORT GREENE PARK | PWB | Entrance Ramp Area - Before & After

PAVEMENTS



SITE FURNISHINGS & MATERIALS



Park Lighting



Accessible Drinking Fountain



Pilot Rock Picnic Tables - Fixed & Movable



Basketball Court - Green and Tan



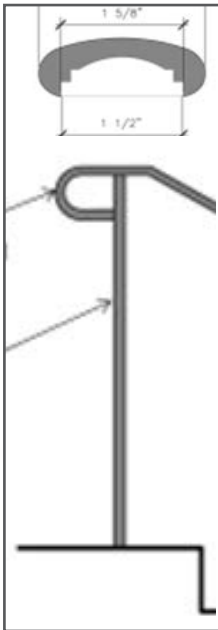
Bottle Filler



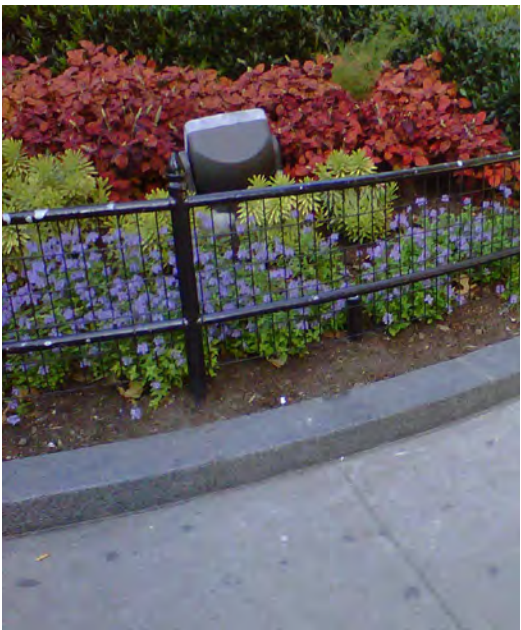
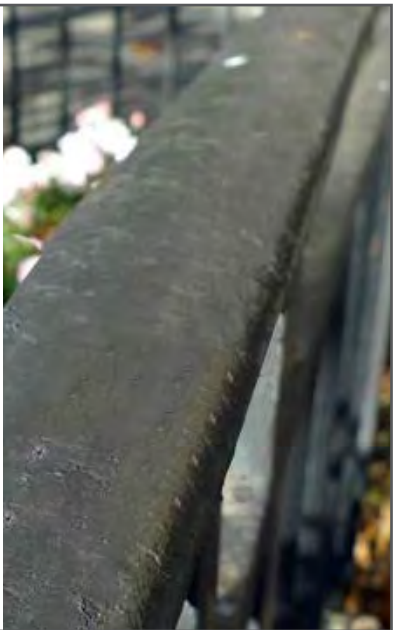
Barbecue Grills



Coal/Ash Disposal



Handrail - Julius Blum

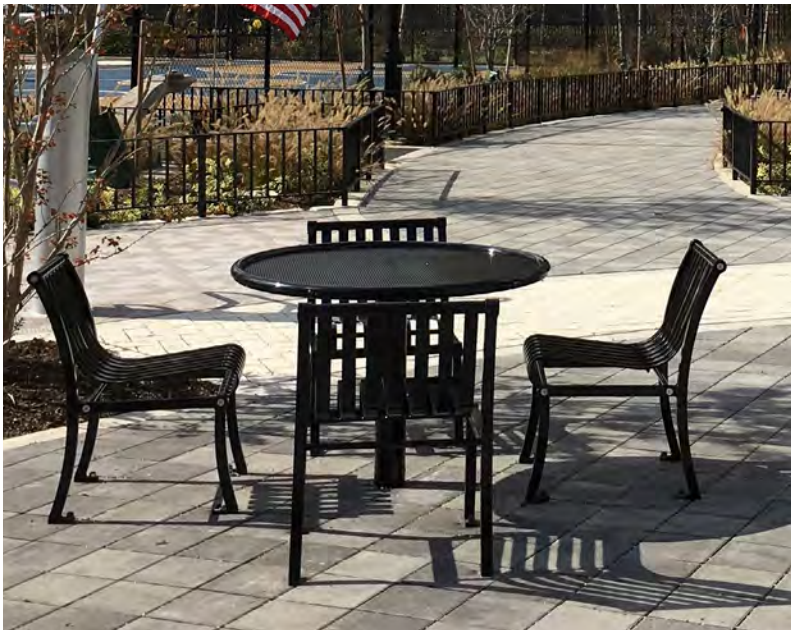


Single & Double Pipe Rail Fence





Adult Fitness Equipment



Tables and Chairs



Belgian Block - ADA Compliant



Asphalt Hex Block Pavement



Borough President's Bench
along Myrtle Avenue Sidewalk



1939 World's Fair Bench w/
Wood Slats painted green in
Plaza and Oval



Radial Granite Backless
Bench around water feature

Granite to Match
Existing throughout park
-Stairs & Water Feature

Crystal Rose
Concrete Paver
-Seating Areas

Jet Mist Granite
-Banding
-Granite Block



Plaza Paving Materials



Safety Surface - Green Marble



FORT GREENE PARK | PWB - Site Furnishings

MYRTLE AVENUE MID-BLOCK ENTRANCE

MYRTLE AVENUE SIDEWALK

LOWER PLAZA / PICNIC AREA /
FITNESS / BASKETBALL

MYRTLE AND WASHINGTON PARK OVAL



Thank You

DeKALB AVENUE STAIRS

