

PROPOSED ROOFTOP SUMMER TEMPORARY STRUCTURES

PIER 17

SEAPORT DISTRICT NYC

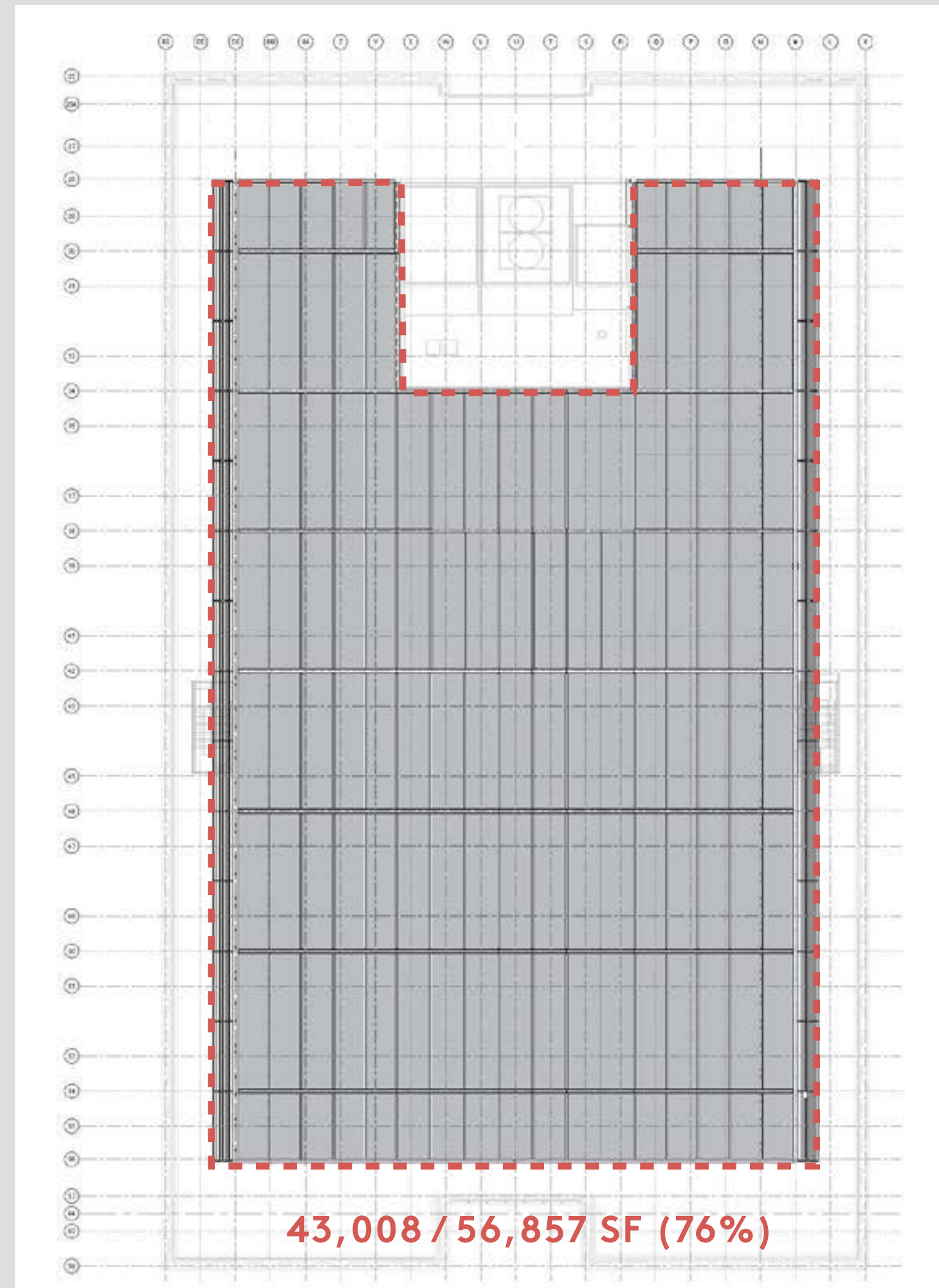
Howard Hughes

PIER 17

REJECTED PERMANENT CANOPY - MARCH 2015



REJECTED PERMANENT CANOPY - MARCH 2015

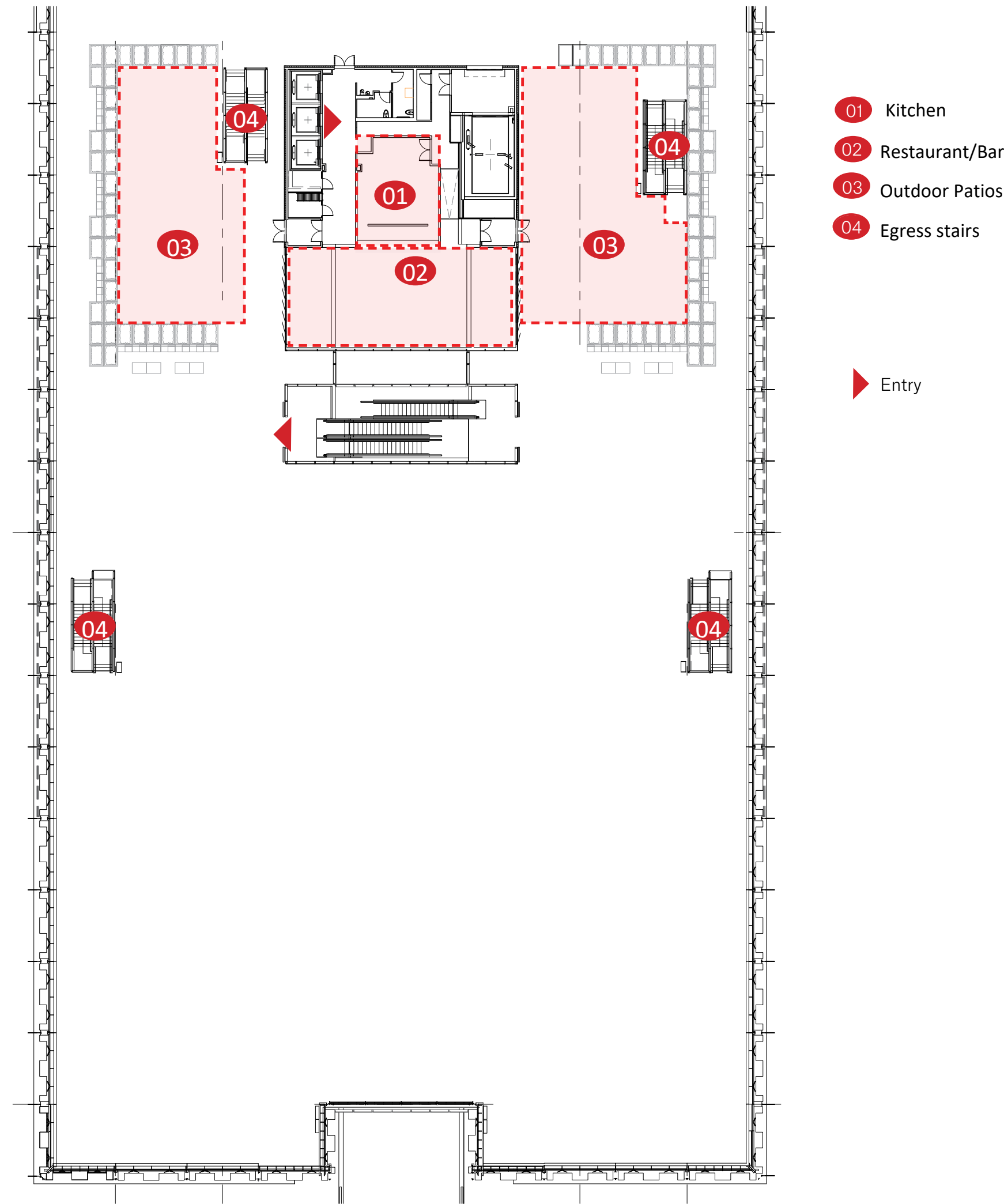


REJECTED PERMANENT CANOPY - SOUTH ELEVATION - MARCH 2015

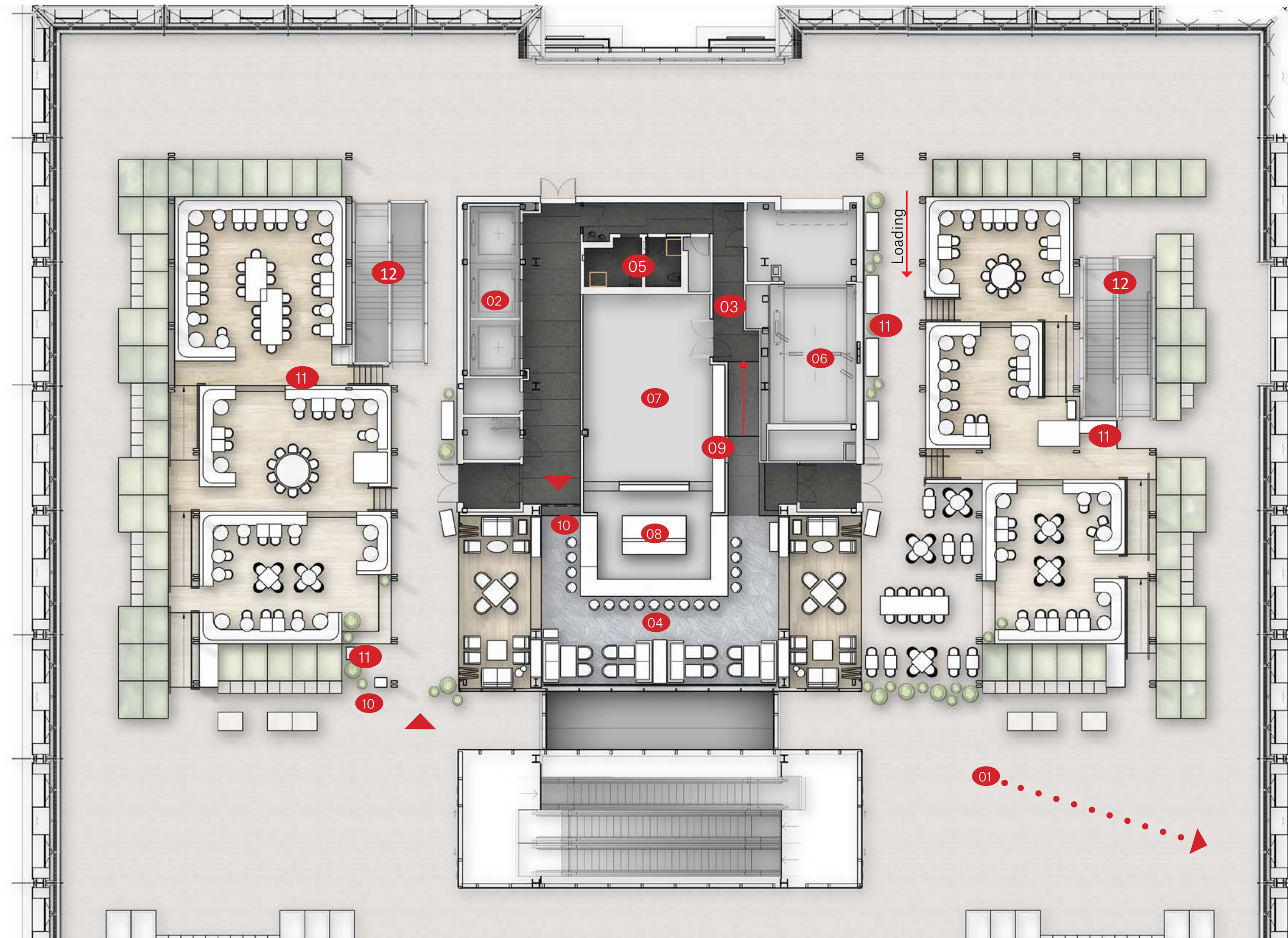


PROPOSED PATIO SHADING STRUCTURE

PIER 17 ROOF



PIER 17 ROOF



- 01 View out to Brooklyn Bridge
- 02 Passenger elevator
- 03 Entryway
- 04 Indoor Restaurant/ Bar
- 05 Bathrooms
- 06 Freight elevator
- 07 Prep kitchen
- 08 Open kitchen/plating
- 09 Food pick-up
- 10 Host/ Hostess
- 11 Service Station
- 12 Egress Stairs

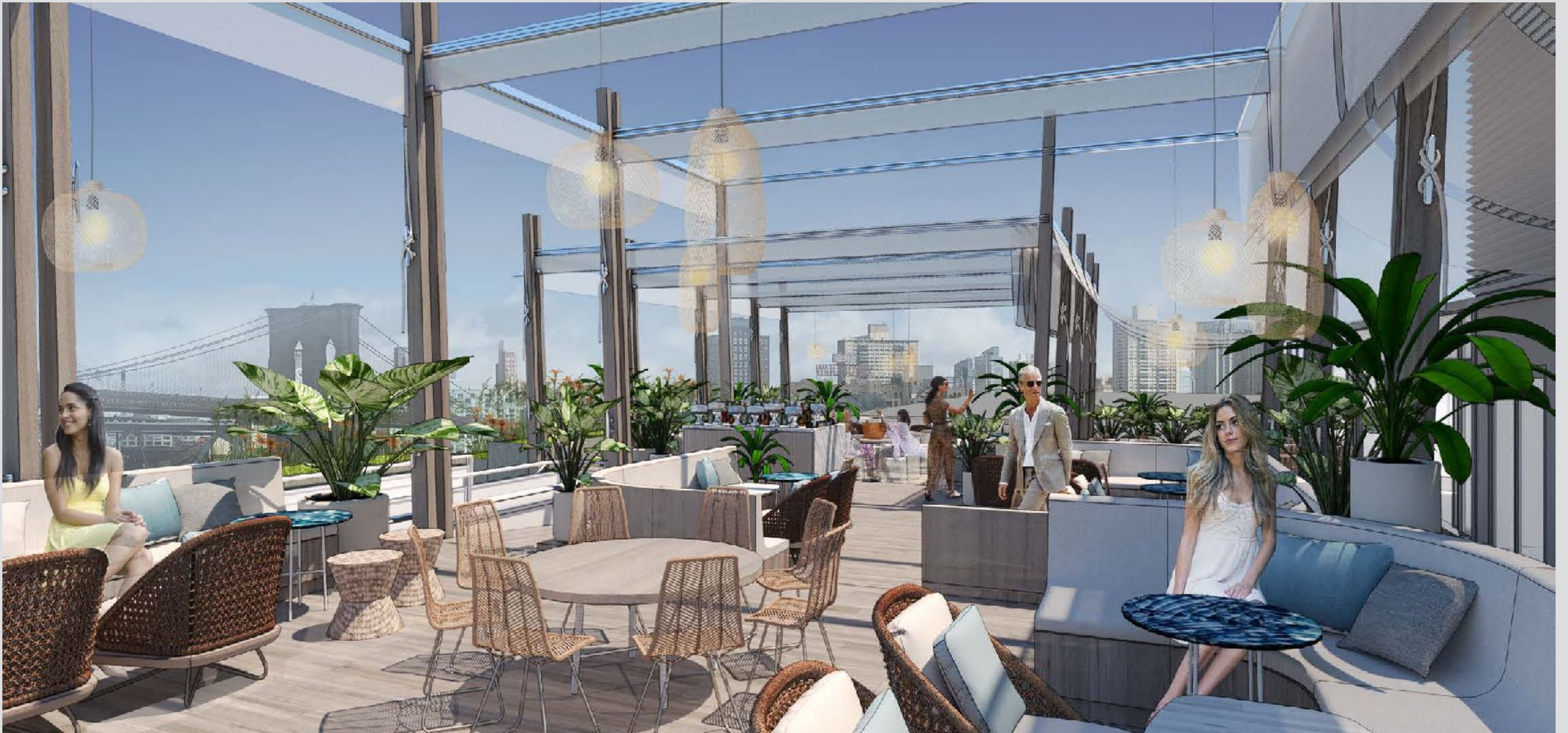
▶ Entry

RESTAURANT TEMPORARY PATIO SHADE



NORTH PATIO

RESTAURANT TEMPORARY PATIO SHADE

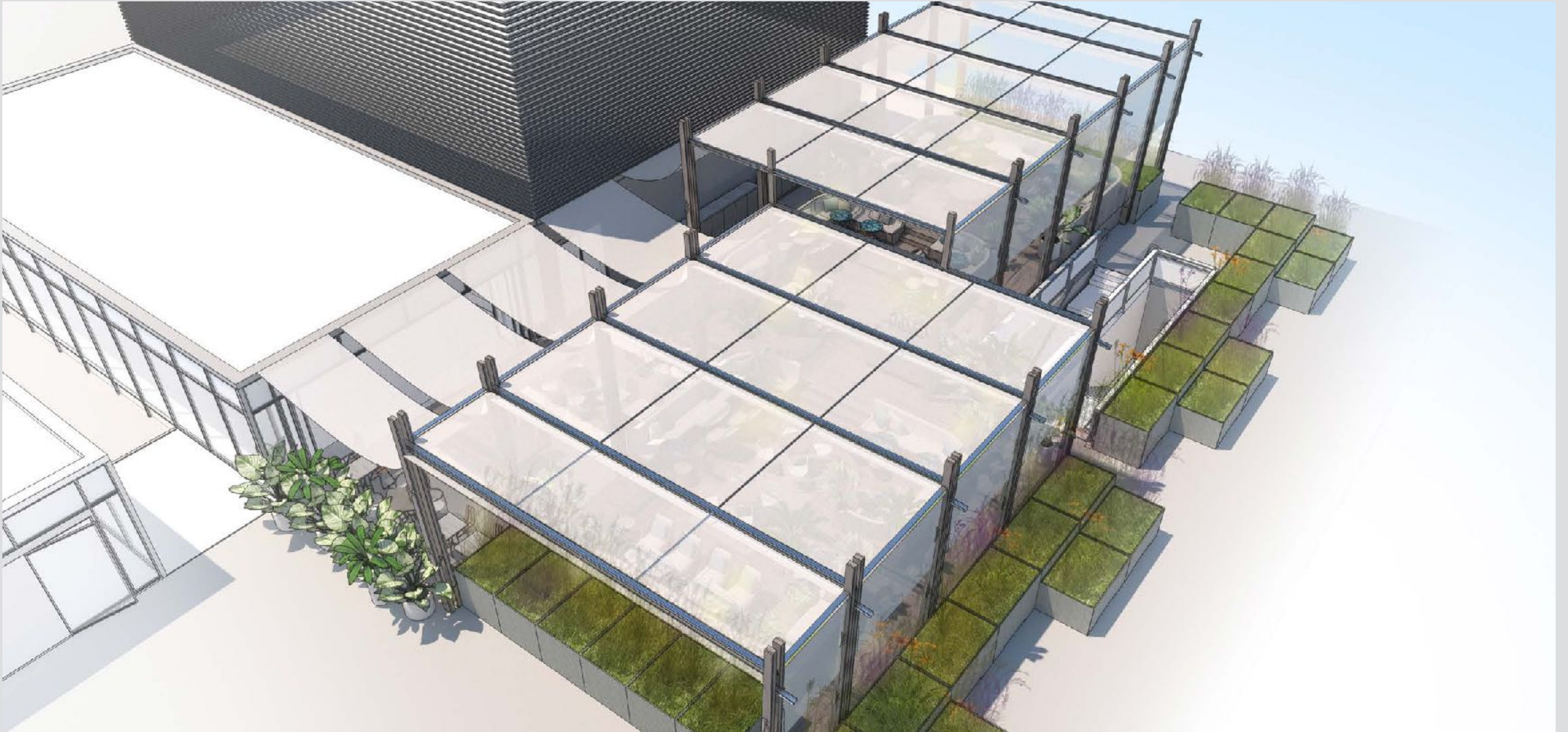


NORTH PATIO

RESTAURANT TEMPORARY PATIO SHADE



RESTAURANT TEMPORARY PATIO SHADE



PROPOSED TEMPORARY STAGE ENVELOPE

TEMPORARY STAGE ENVELOPE ARCHITECT: MENGES SCHEFFLER



PROFESSOR ACHIM MENGES IS A REGISTERED ARCHITECT IN FRANKFURT AND PROFESSOR AT STUTTGART UNIVERSITY, WHERE HE IS THE FOUNDING DIRECTOR OF THE INSTITUTE FOR COMPUTATIONAL DESIGN. HIS PROJECTS AND DESIGN RESEARCH WORK HAS RECEIVED VARIOUS INTERNATIONAL AWARDS, HAS BEEN PUBLISHED AND EXHIBITED WORLDWIDE, AND FORMS PART OF SEVERAL RENOWNED MUSEUM COLLECTIONS, AMONG OTHERS, THE PERMANENT COLLECTION OF THE CENTRE POMPIDOU IN PARIS AND THE VICTORIA & ALBERT MUSEUM IN LONDON.



DESIGN INSPIRATION

SEAPORT DISTRICT PIERS: AREA WHERE SEA AND LAND INTERCONNECT



LOWER MANHATTAN WITH SEAPORT DISTRICT, 1928

(URL <<http://www.skyscrapercity.com>, 07.12.2017)



SEAPORT DISTRICT, 1901

(Detroit Publishing Company, Shorpy, URL <<http://www.shorpy.com/node/11511>, 07.12.2017)

DESIGN INSPIRATION

SEAPORT DISTRICT PIERS: AREA WHERE SEA AND LAND INTERCONNECT
BLURRING BETWEEN PIER BUILDINGS AND NAVAL ARCHITECTURE SUCH AS MASTS, SAILS, RIGGING



SEAPORT DISTRICT, 1901

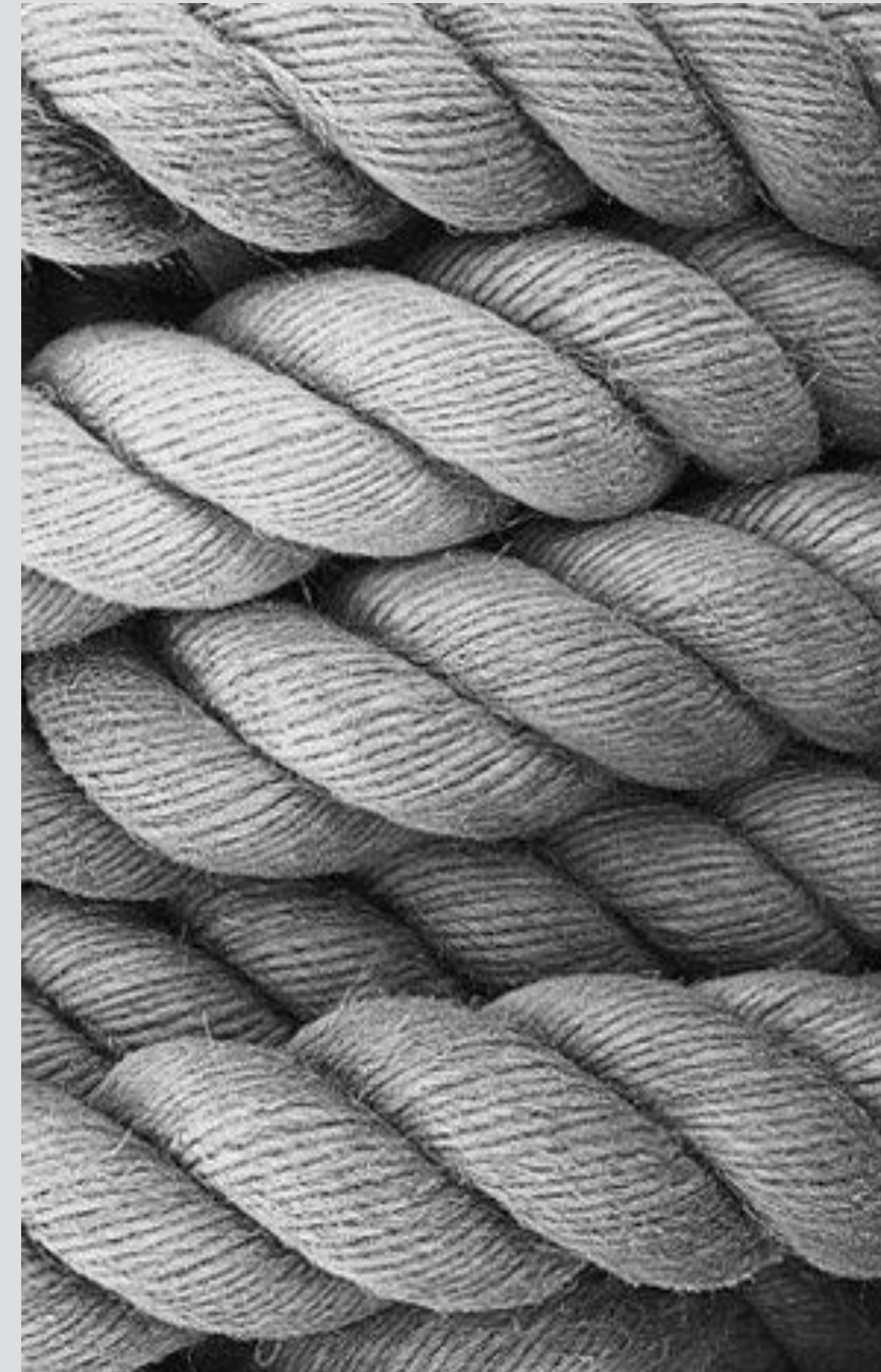
(Excerpt, Detroit Publishing Company, Shorpy, URL <<http://www.shorpy.com/node/11511>, 07.12.2017)

DESIGN INSPIRATION
SEAPORT DISTRICT PIERS: AREA WHERE SEA AND LAND INTERCONNECT
DESIGN PAYS TRIBUTE TO THIS PARTICULAR CONDITION:
EVOKING TENSILE STRUCTURES IN A CONTEMPORARY WAY



SEAPORT DISTRICT, 1901

(Excerpt, Detroit Publishing Company, Shorpy, URL <<http://www.shorpy.com/node/11511>, 07.12.2017)



SAILING ROPE

(Element of Art, URL <<https://www.smores.com/9xm5-elements-of-art-texture>, 07.12.2017)



SAILING BOAT AT FULTON STREET DOCK

(Theoline, New York, 1936 © Berenice Abbott, courtesy Howard Greenberg Gallery)

DESIGN INSPIRATION
SEAPORT DISTRICT: BROOKLYN BRIDGE AS A LANDMARK STRUCTURE
ENGINEERING INNOVATION MARKS THE AREA



BROOKLYN BRIDGE AND MANHATTAN SKYLINE, CA.1908
(Detroit Publishing Company, Shorpy, <http://www.shorpy.com/node/8369>, 07.12.2017)

DESIGN INSPIRATION

SEAPORT DISTRICT: BROOKLYN BRIDGE AS A LANDMARK STRUCTURE
HANGING BRIDGE CONCEPT OF TENSILE MEMBERS THAT MAKE THE STRUCTURE ALMOST DISAPPEAR

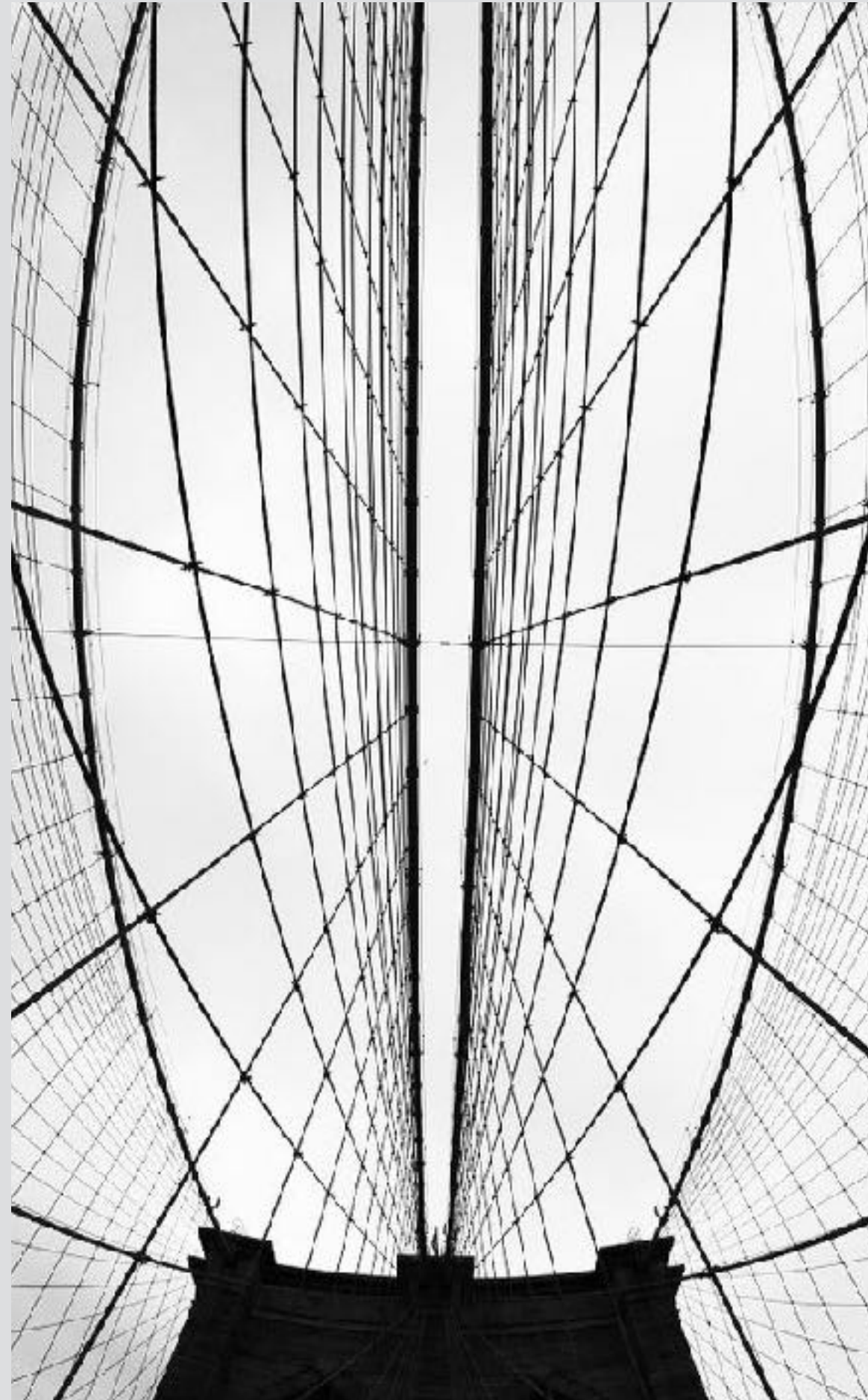


BROOKLYN BRIDGE
(© Areeb Masood, GoPro)

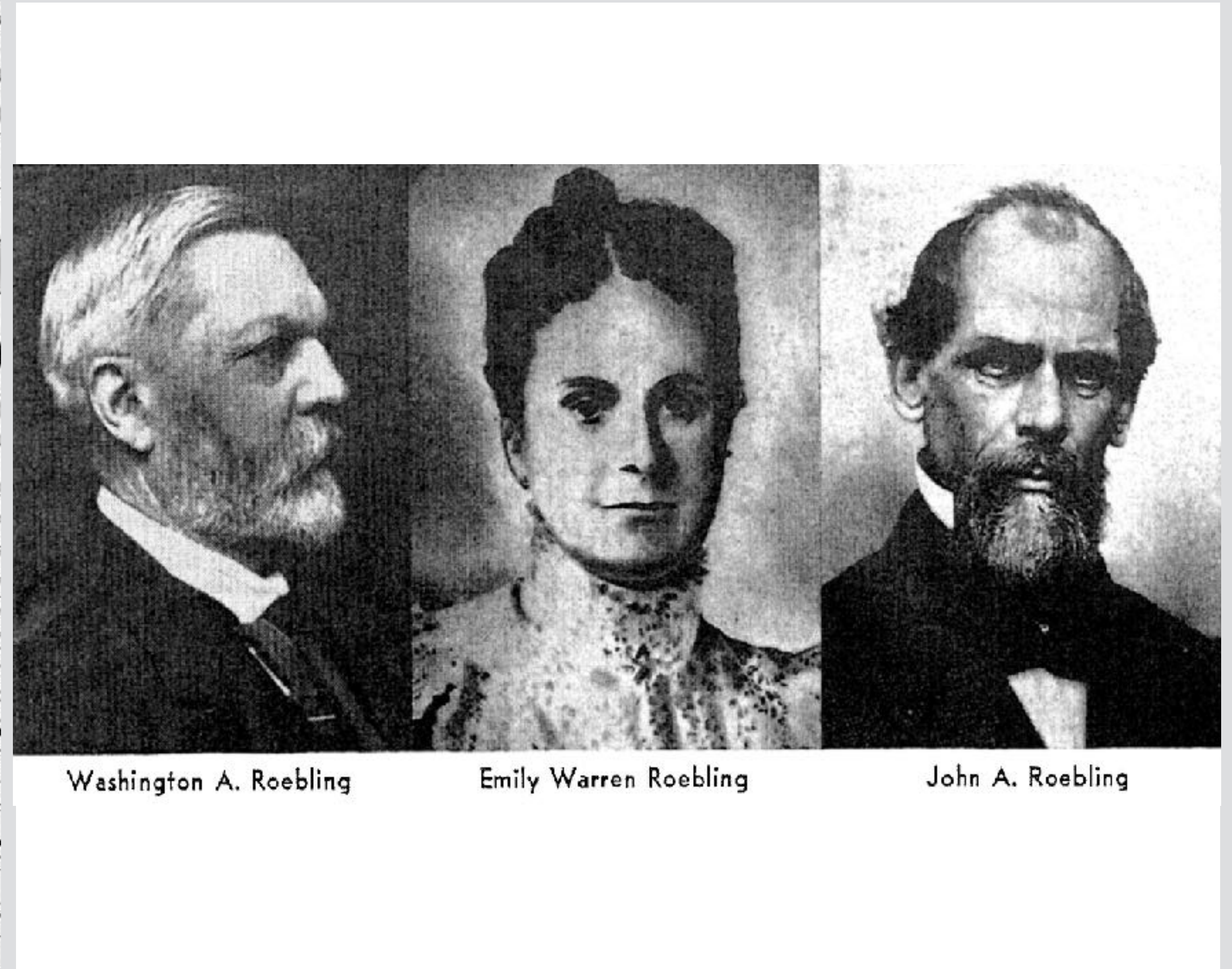
DESIGN INSPIRATION
SEAPORT DISTRICT: BROOKLYN BRIDGE AS A LANDMARK STRUCTURE
DESIGN EXCELLENCE DRIVEN BY MATERIAL INNOVATION LEADS TO AUTHENTIC AESTHETICS



STEEL CABLES
(07.12.2017)



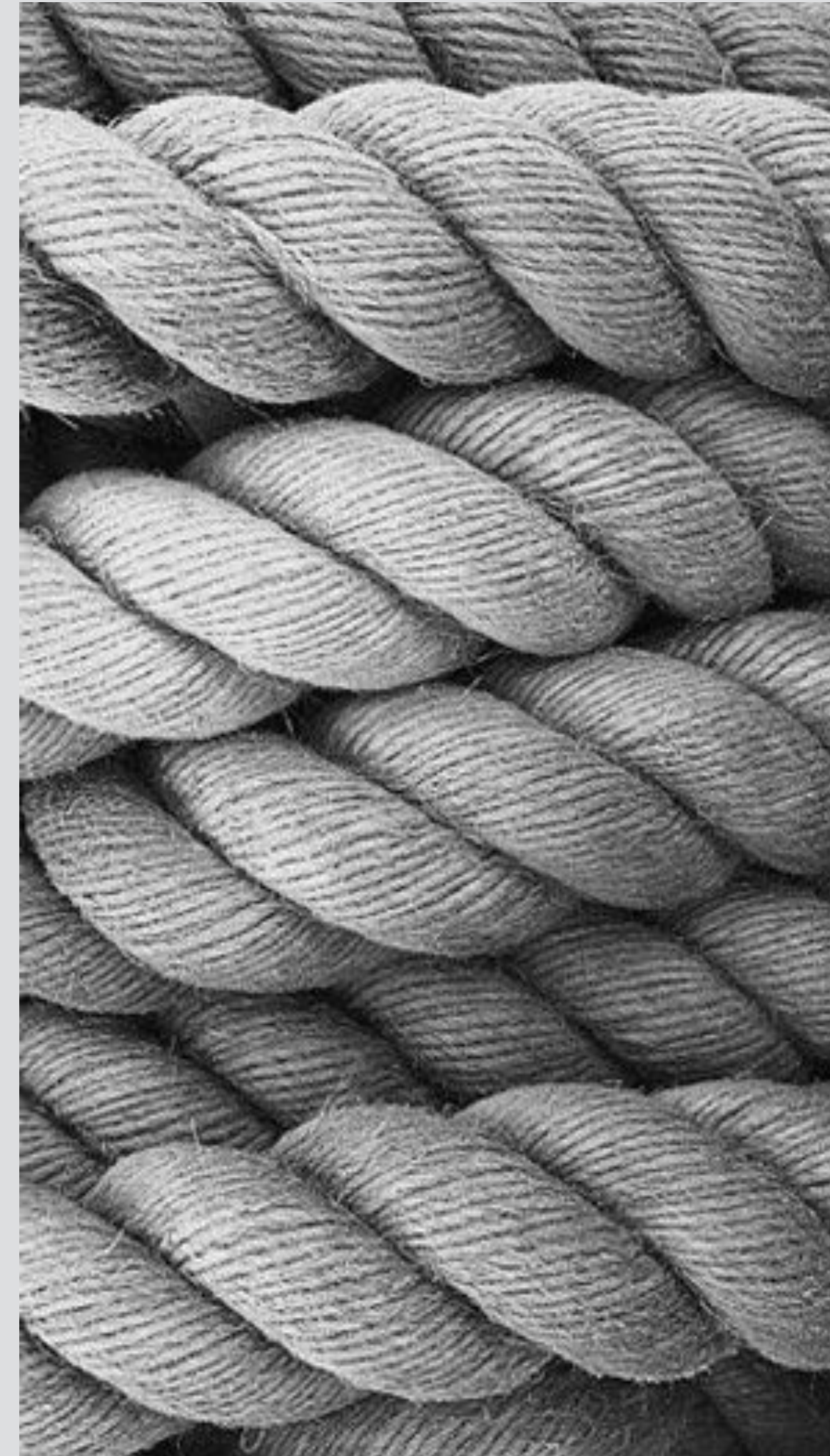
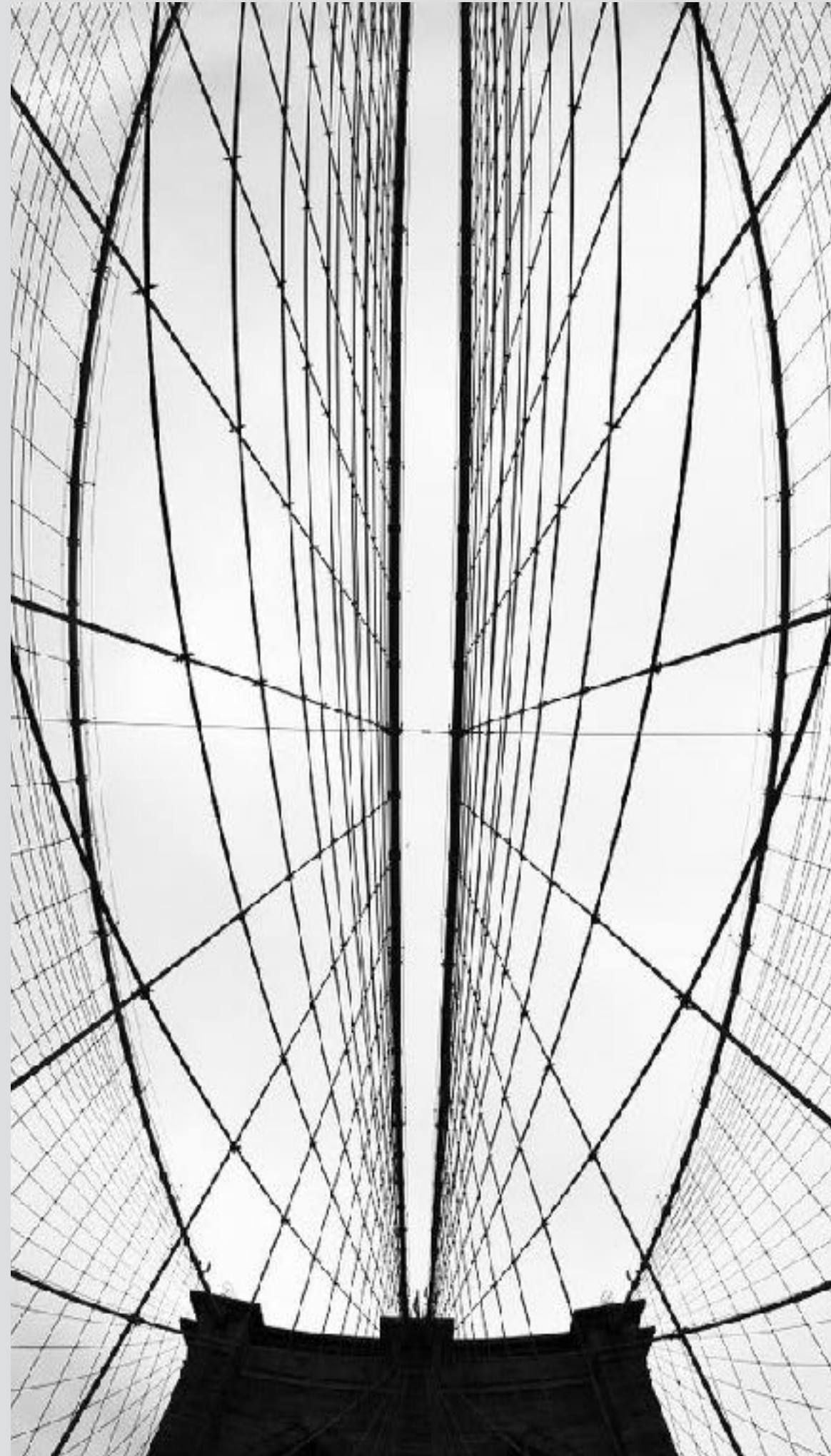
BROOKLYN BRIDGE
(© Tobias Koch, URL < <http://www.tokography.com>, 07.12.2017)



ROEBLING FAMILY
(Harrod, Kathryn E., Master Bridge Builders, the Story of the Roeblings, 1958)

STAGE ENVELOPE DESIGN ASPIRATION

DESIGN TRANSFORMS THE MARITIME EXPRESSION OF MASTS, SAILS AND RIGGING INTO AN EVOCATIVE SCULPTURE AND A FUNCTIONAL PIECE OF PUBLIC ART ENABLED BY 21ST ENGINEERING TECHNOLOGY



STAGE ENVELOPE DESIGN ASPIRATION
EMPLOYING THE LATEST MATERIAL TECHNOLOGY OF HIGH PERFORMANCE SAILS
FOR MAXIMUM LIGHTNESS, TRANSPARENCY AND STABILITY IN ARCHITECTURE



21ST CENTURY SAIL MADE FROM FIBER COMPOSITE MATERIAL
(North Sails, 3DL ,URL < <http://www.nauticexpo.de>, 07.12.2017)

TEMPORARY STAGE ENVELOPE MATERIAL
GLASS AND CARBON FIBER COMPOSITE MATERIALS
INITIALLY SOFT AND FLEXIBLE, WHEN CURED AS STRONG AS STEEL



GLASS FIBER



CARBON FIBER

ELYTRA FILAMENT PAVILION AT THE VICTORIA & ALBERT MUSEUM IN LONDON SHOWCASING ADVANCED ARCHITECTURE AS A HISTORICAL CONTINUUM OF INNOVATION



ELYTRA FILAMENT PAVILION BY ACHIM MENGES

ELYTRA FILAMENT PAVILION AT THE VITRA CAMPUS IN WEIL AM RHEIN
SHOWCASING ADVANCED ARCHITECTURE AS A HISTORICAL CONTINUUM OF INNOVATION



VITRA DESIGN MUSEUM (1989) BY FRANK O. GEHRY

GEODESIC DOME (1975) BY RICHARD BUCKMINSTER FULLER

ELYTRA FILAMENT PAVILION (2016) BY ACHIM MENGES

PIER 17

ELYTRA FILAMENT PAVILION LIGHTWEIGHT AND MODULAR FIBRE COMPOSITE CONSTRUCTION



ELYTRA FILAMENT PAVILION BY ACHIM MENGES

DESIGN BRIEF: TEMPORARY STAGE COVER CONVENTIONAL STAGE EXAMPLES



SOUTHSIDE FESTIVAL - STAGE (2002)



O2 WIRELESS FESTIVAL- MAIN STAGE (2008)



HURRICANE FESTIVAL- TOWER STAGE (2012)

TEMPORARY STAGE ENVELOPE
TRANSPARENCY AND LIGHTNESS AS THE GUIDING DESIGN PRINCIPLES
SHAPE REFLECTS PROFILE OF BROOKLYN BRIDGE



TEMPORARY STAGE ENVELOPE
TRANSPARENCY AND LIGHTNESS AS THE GUIDING DESIGN PRINCIPLES



TEMPORARY STAGE ENVELOPE
TRANSPARENCY AND LIGHTNESS AS THE GUIDING DESIGN PRINCIPLES



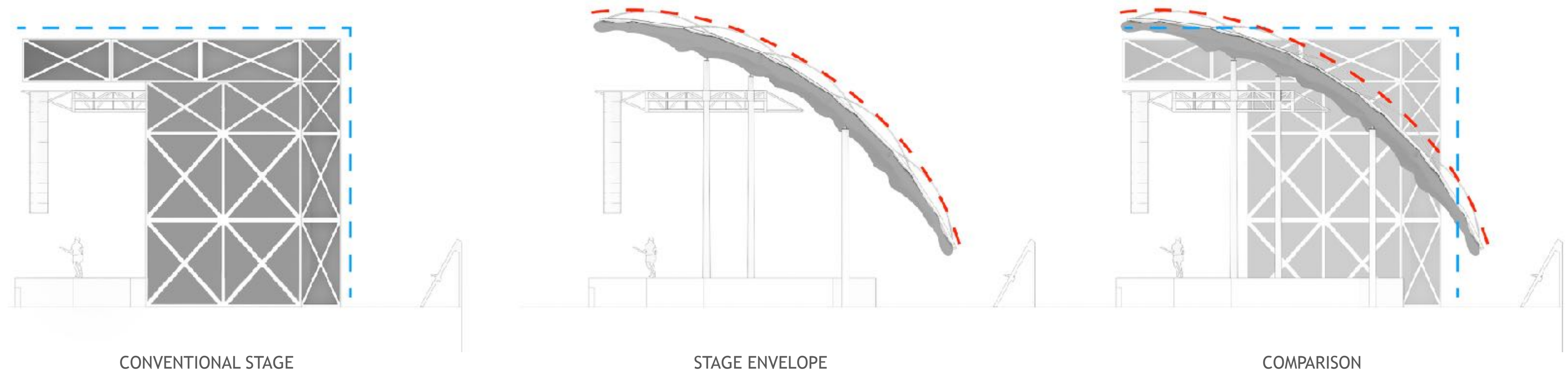
TEMPORARY STAGE ENVELOPE
TRANSPARENCY AND LIGHTNESS AS THE GUIDING DESIGN PRINCIPLES



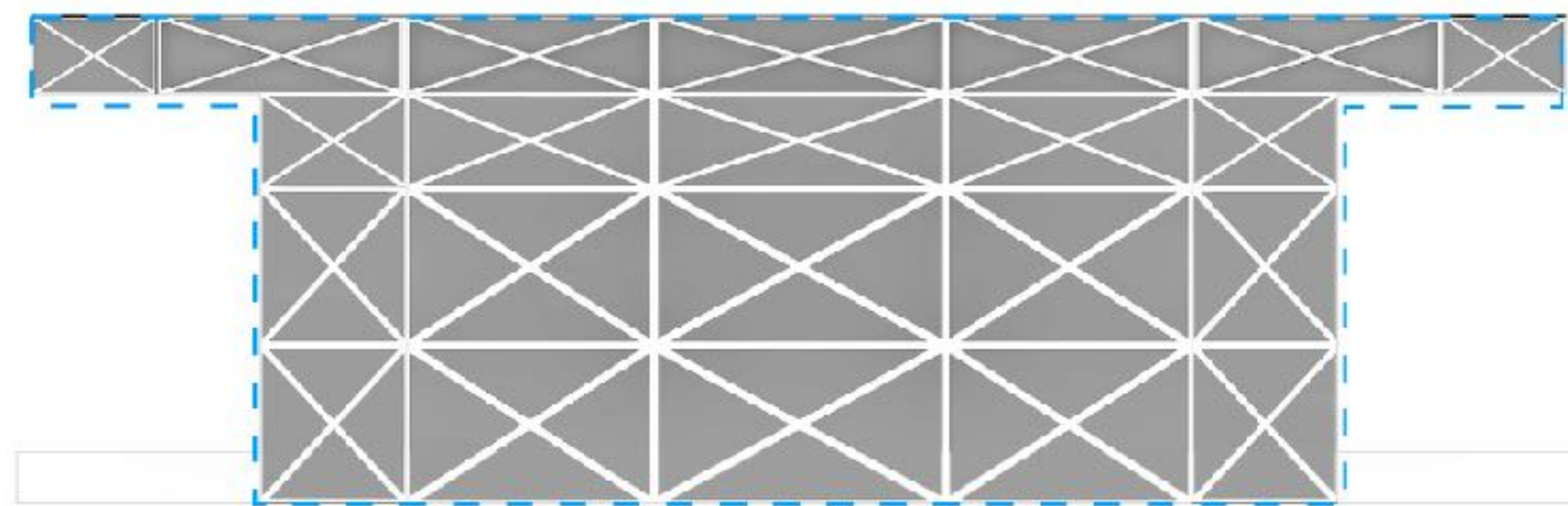
TEMPORARY STAGE ENVELOPE
TRANSPARENCY AND LIGHTNESS AS THE GUIDING DESIGN PRINCIPLES



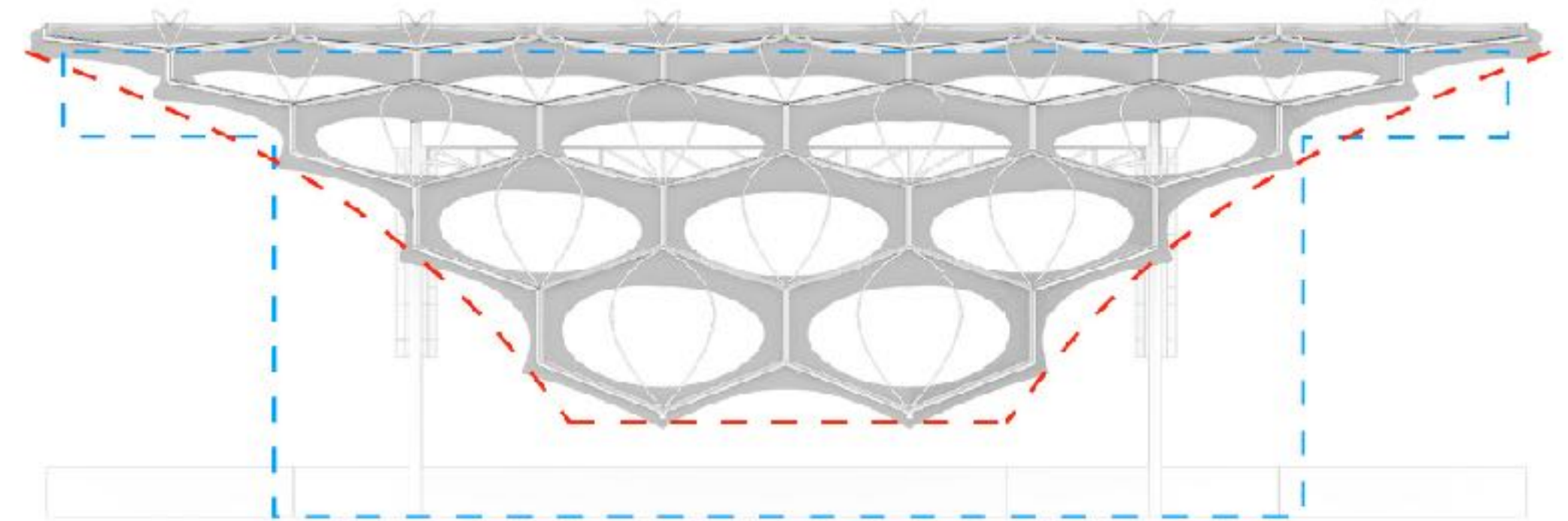
TEMPORARY STAGE ENVELOPE COMPARISON WITH CONVENTIONAL STAGE



TEMPORARY STAGE ENVELOPE COMPARISON WITH CONVENTIONAL STAGE



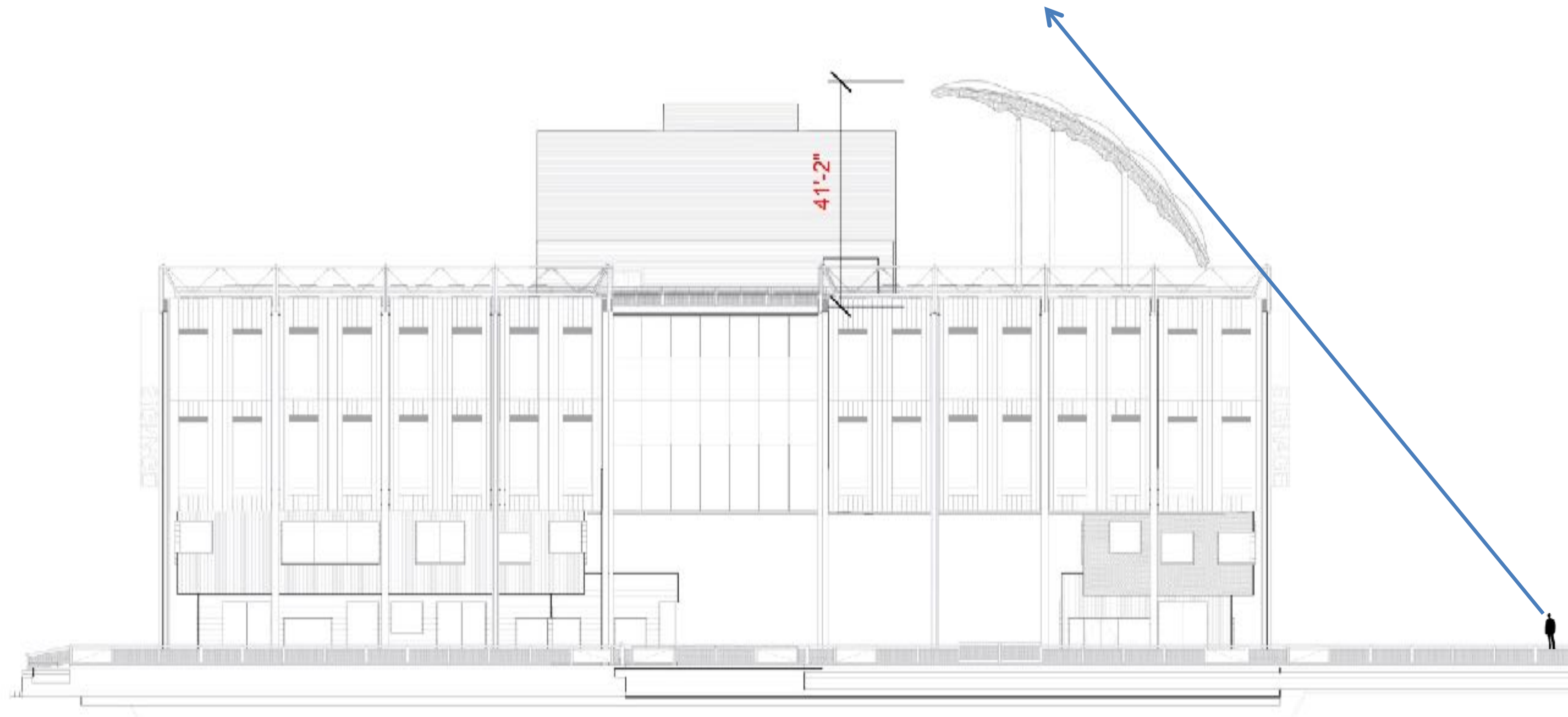
CONVENTIONAL STAGE



STAGE ENVELOPE

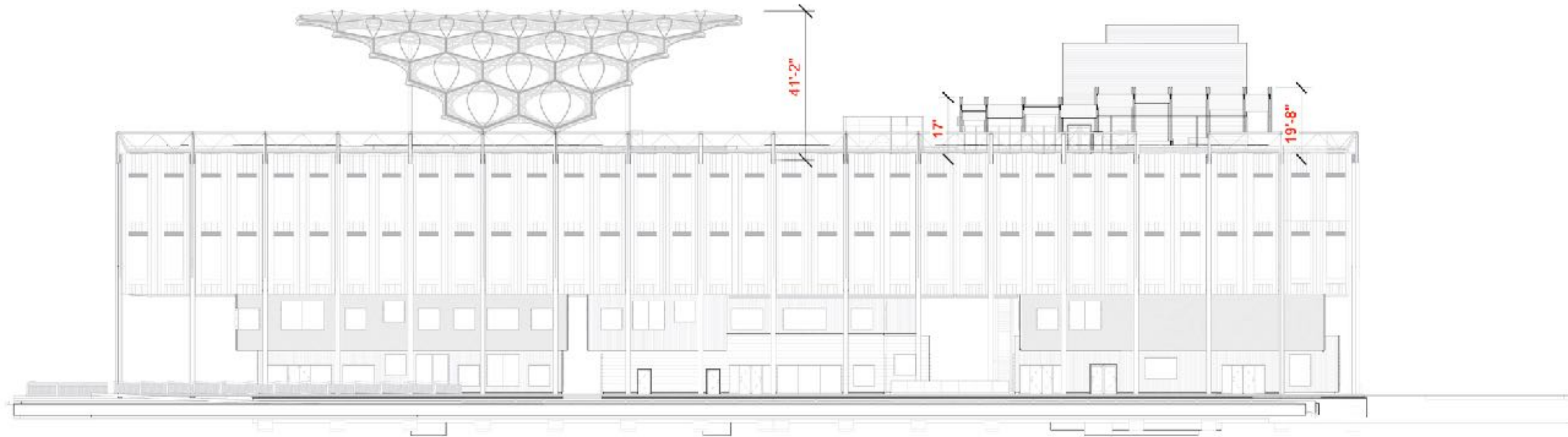
TEMPORARY STAGE ENVELOPE ELEVATION

EAST ELEVATION

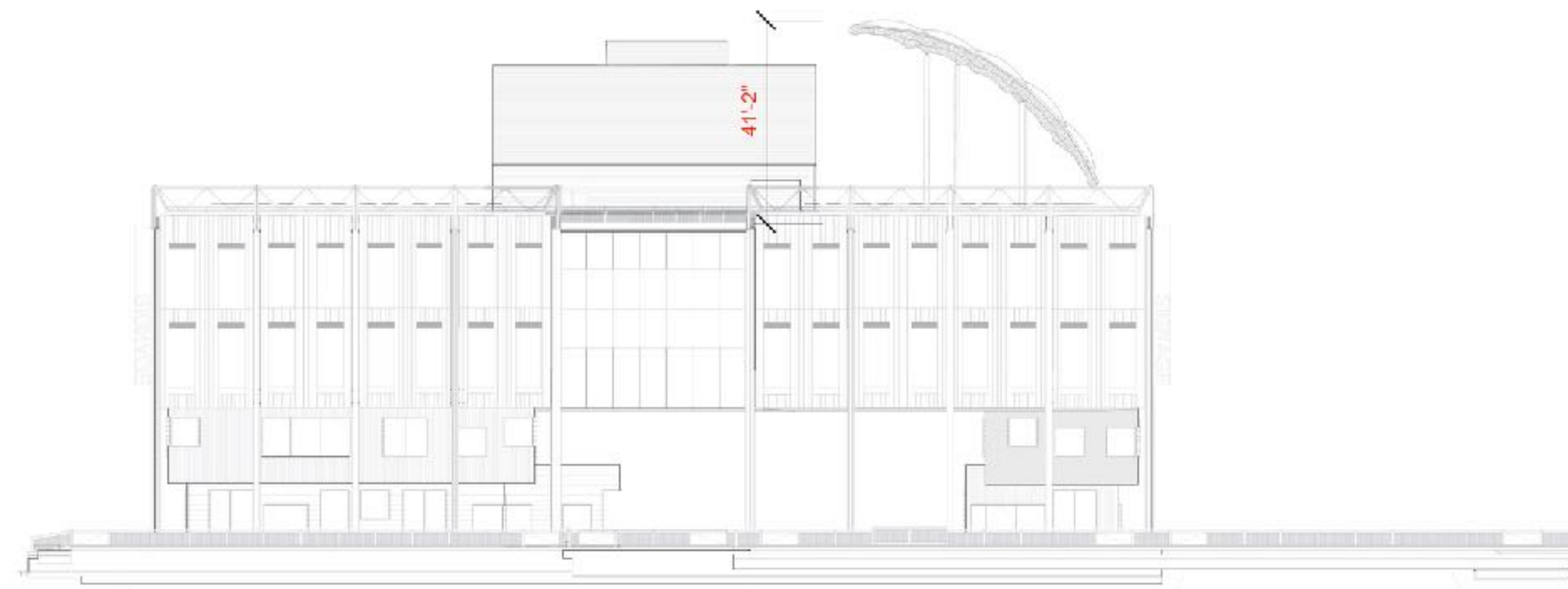


TEMPORARY STAGE ENVELOPE ELEVATION

NORTH ELEVATION

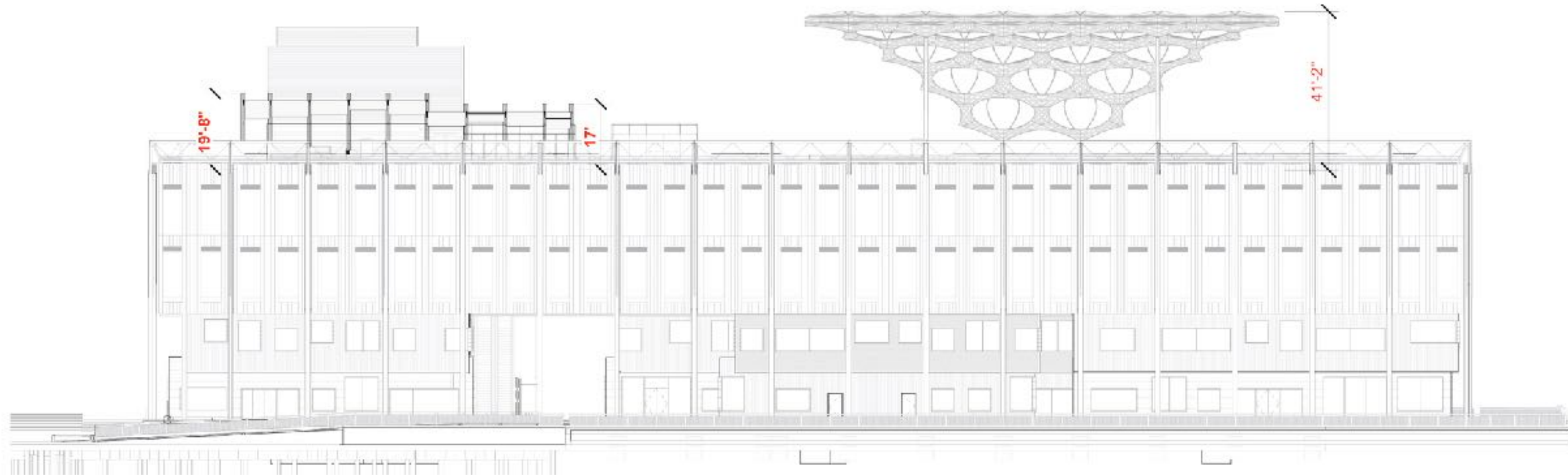


EAST ELEVATION

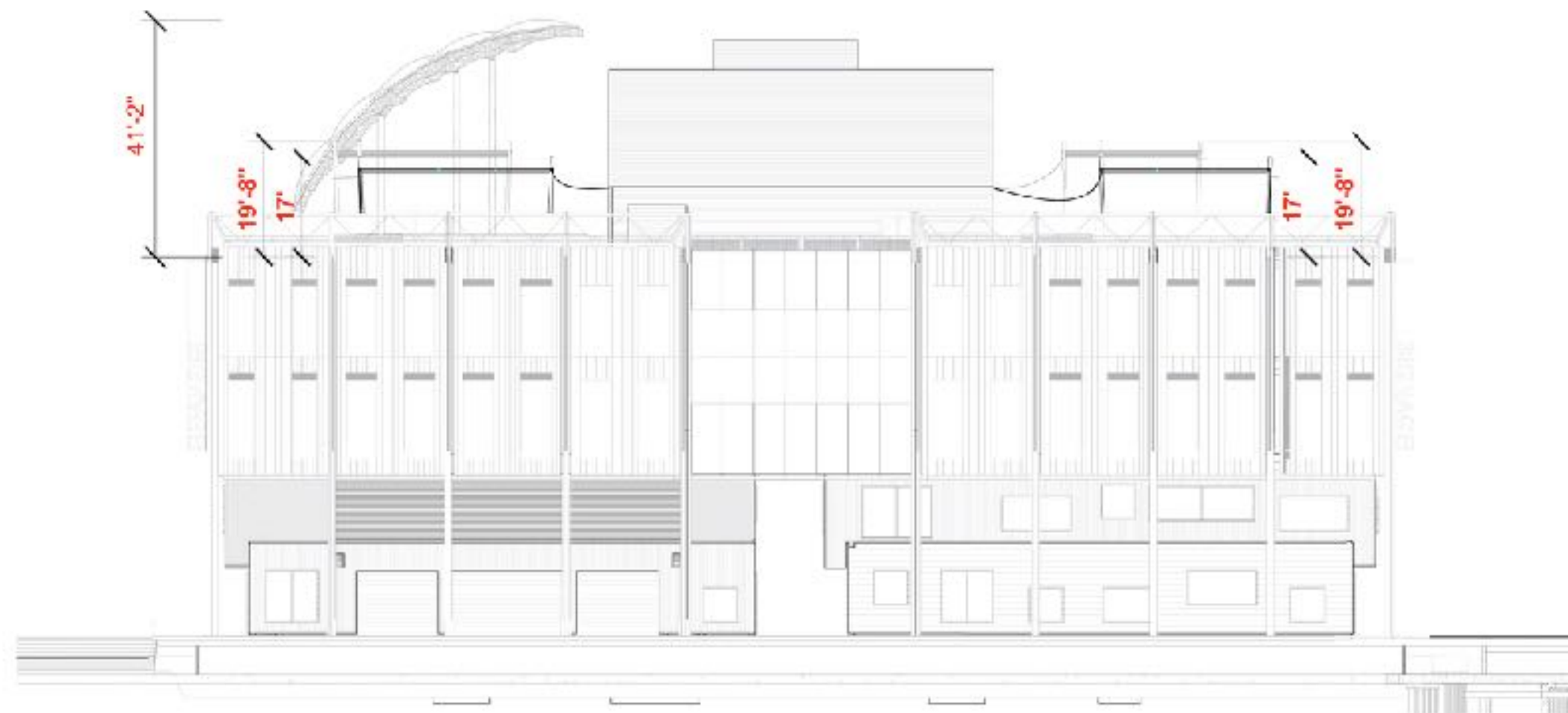


TEMPORARY STAGE ENVELOPE ELEVATION

SOUTH ELEVATION



WEST ELEVATION



STAGE ENVELOPE – EVENT SITUATION



STAGE ENVELOPE – NON-EVENT SITUATION



FUTURE PROPOSED TEMPORARY COVER

TEMPORARY ADJUSTABLE COVER – NON-EVENT SITUATION



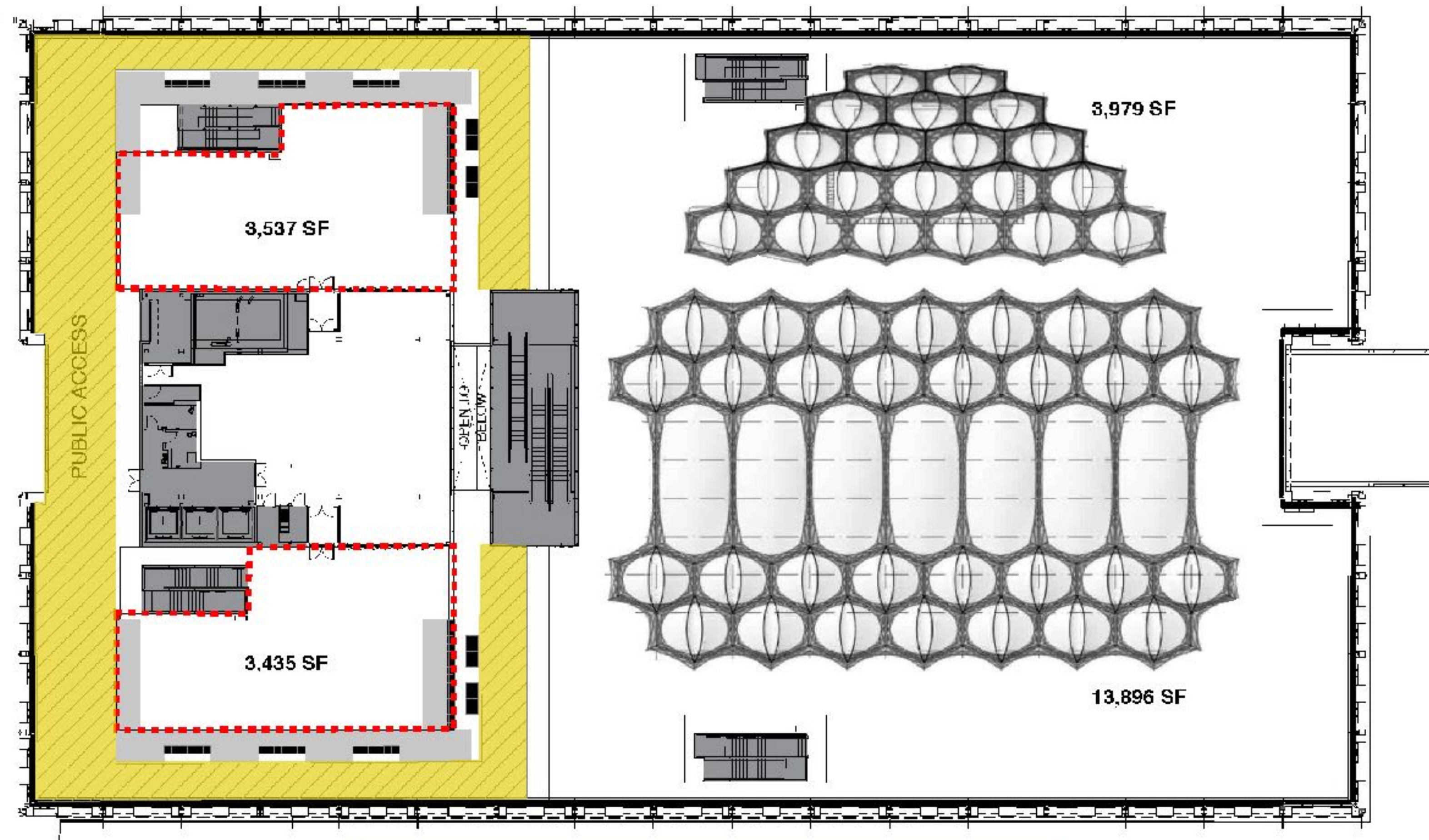
TEMPORARY ADJUSTABLE COVER – NON-CONCERT HEIGHT



TEMPORARY ADJUSTABLE COVER – CONCERT HEIGHT



TEMPORARY ADJUSTABLE COVER – PLAN VIEW



TOTAL COVERAGE 24,847 SF - 43% - TEMPORARY

VIEW 1: STAGE ENVELOPE + EXTENSION 42FT



VIEW 2: STAGE ENVELOPE + EXTENSION 42FT



VIEW 3: STAGE ENVELOPE + EXTENSION 42FT



VIEW 4: STAGE ENVELOPE + EXTENSION 42FT



VIEW 5: STAGE ENVELOPE + EXTENSION 42FT



VIEW 6: STAGE ENVELOPE + EXTENSION 42FT



VIEW 7: STAGE ENVELOPE + EXTENSION 42FT



PIER 17

Q + A

SEAPORT
DISTRICT NYC

PIER 17

THANK YOU

SEAPORT
DISTRICT NYC