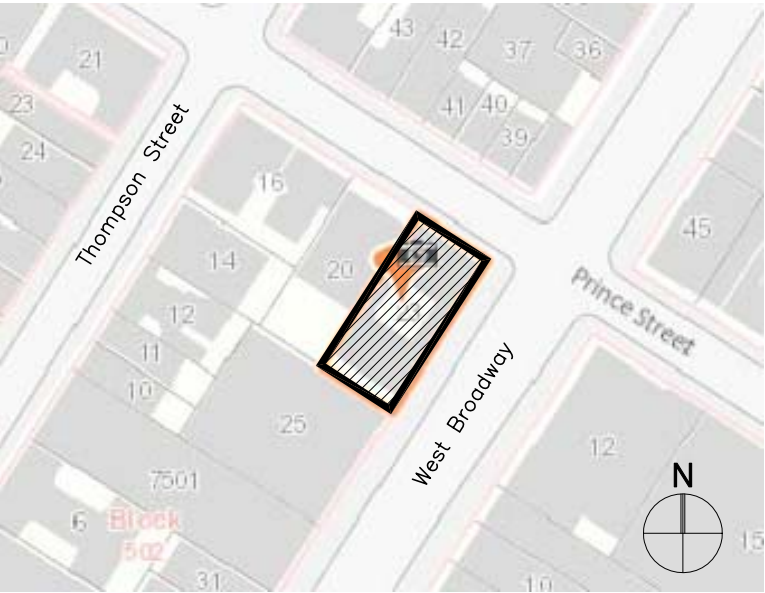


1 BUILDING KEY PLAN  
NOT TO SCALE



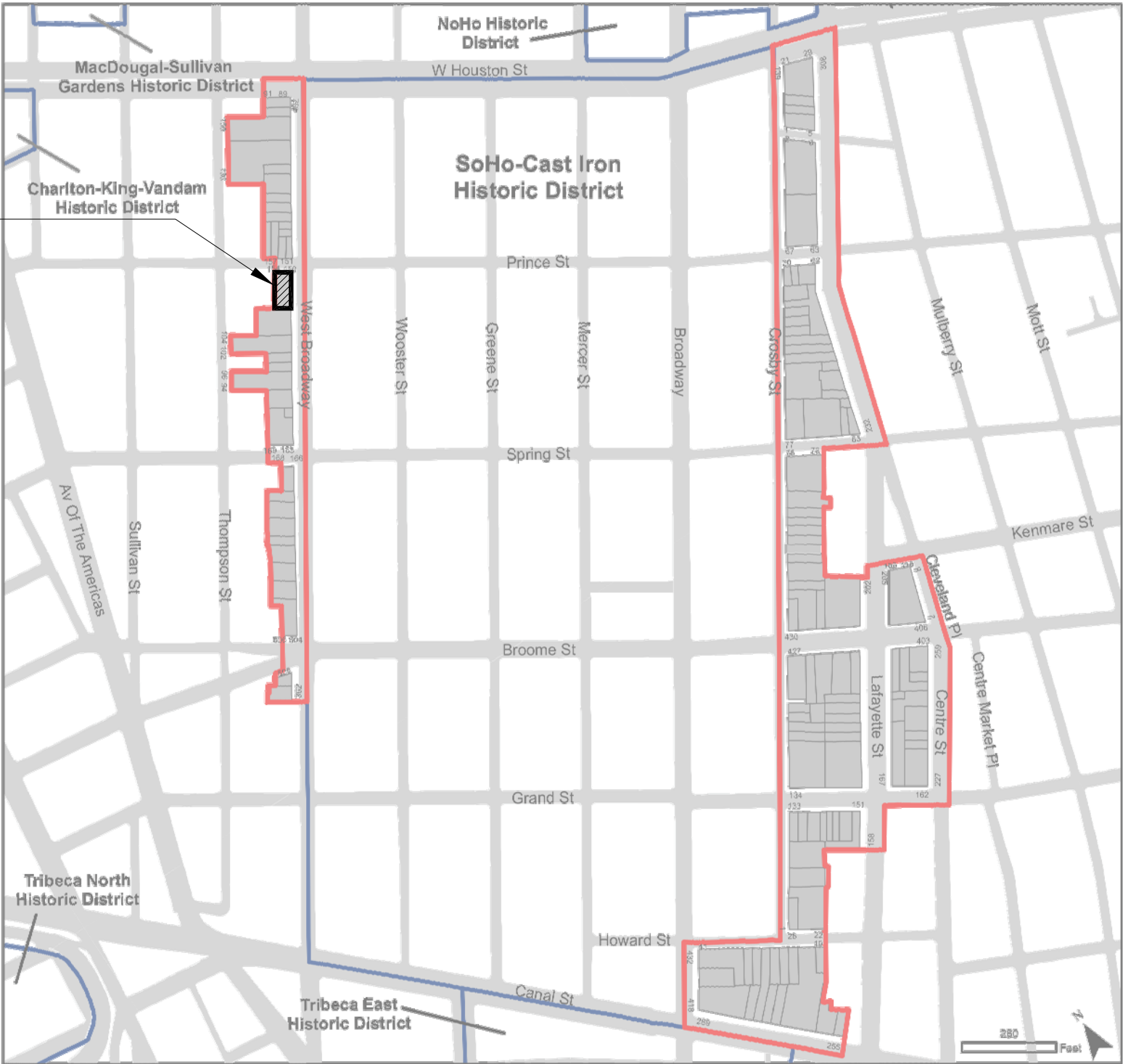
2 LOCATION MAP  
NOT TO SCALE



3 EXIST. BLDG. FACADE

SoHo-Cast Iron Historic District Extension

436 WEST BROADWAY



Graphic Source: I/MapPLUTO, Edition 06C, 2006. Date: May 11, 2010. Author: J/M.

SoHo-Cast Iron  
Historic District Extension  
Borough of Manhattan, NY  
Landmarks Preservation Commission

Calendared: June 23, 2009  
Public Hearing: October 27, 2009  
Designated: May 11, 2010

- Boundary of Existing Districts
- Boundary of District Extension
- Tax Map Lots, District Extension



**NYC**  
Landmarks Preservation  
Commission





① NORTHEAST CORNER — PROPOSED STOREFRONT



② SOUTHEAST CORNER — PROPOSED STOREFRONT

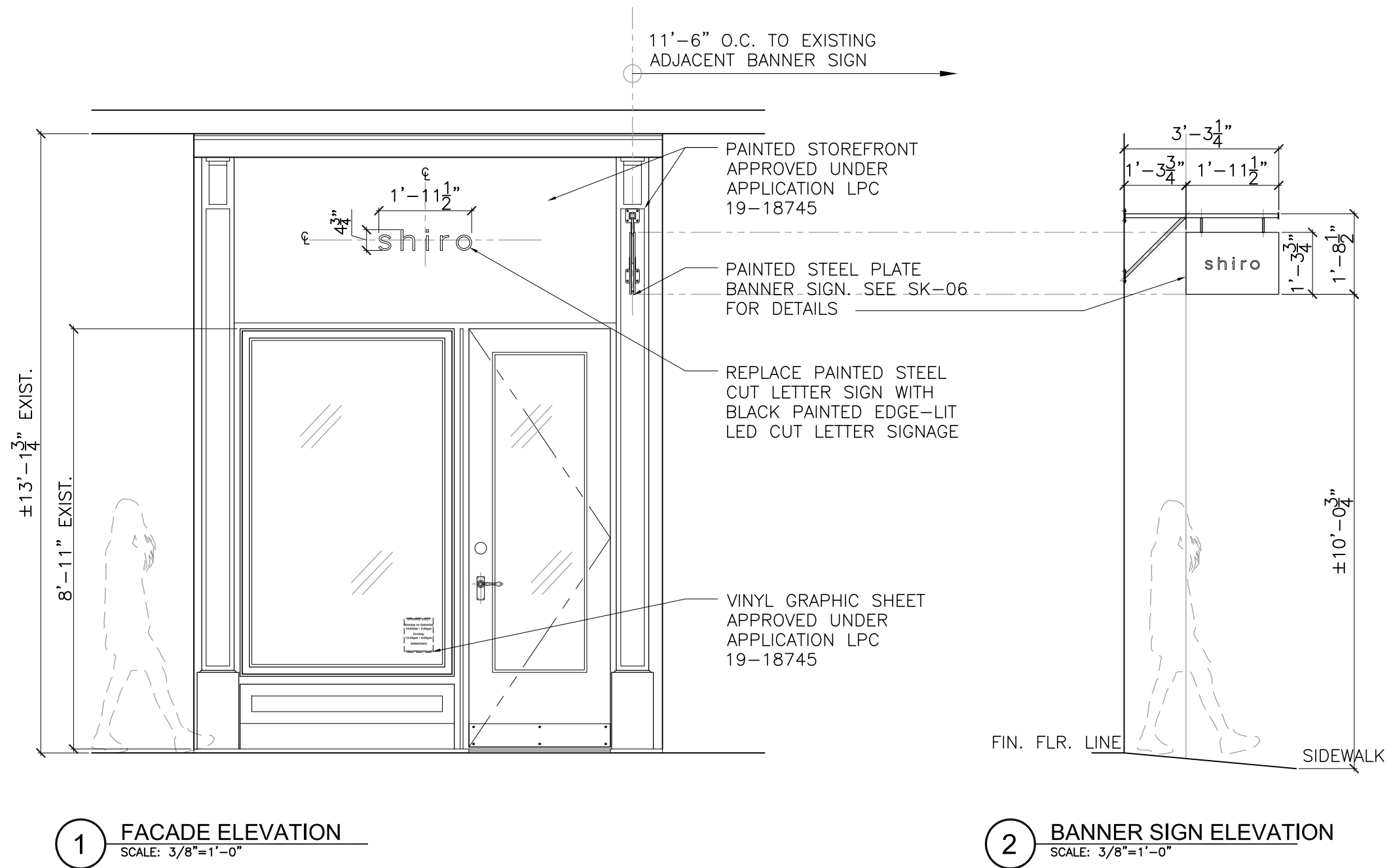


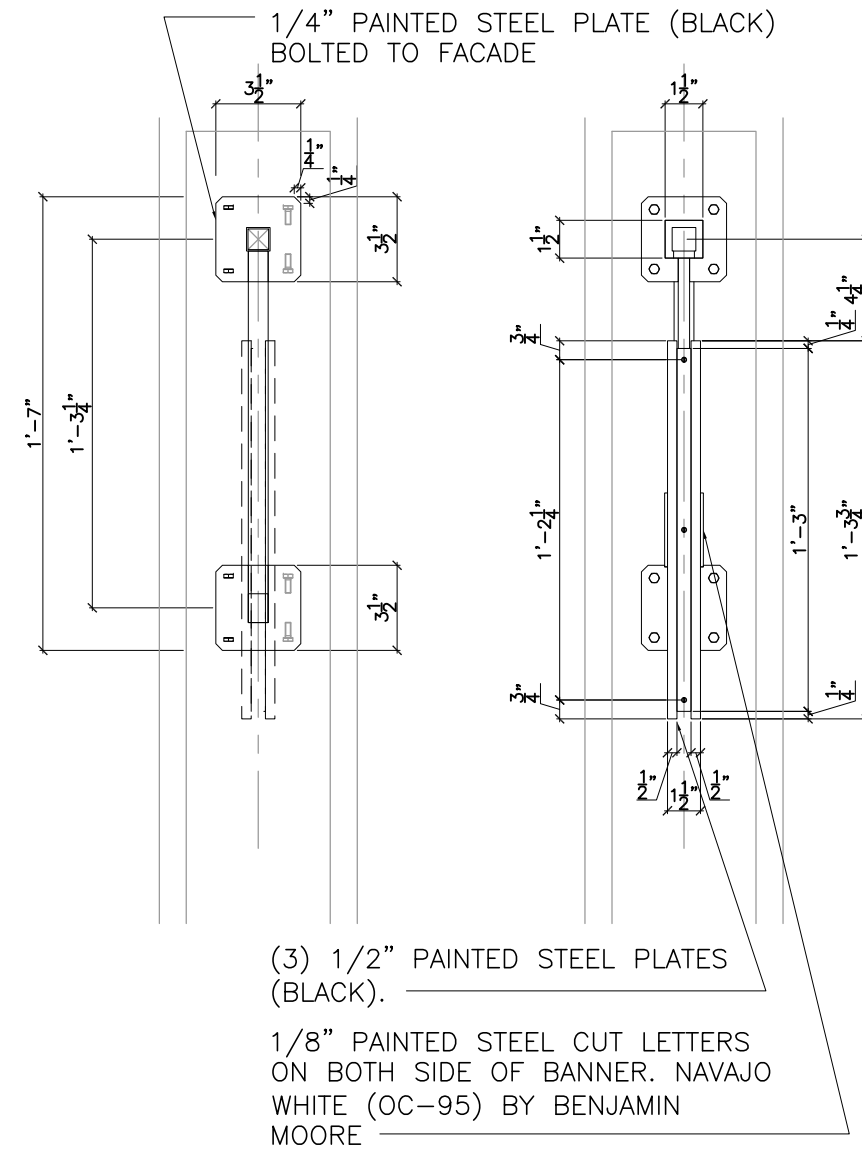
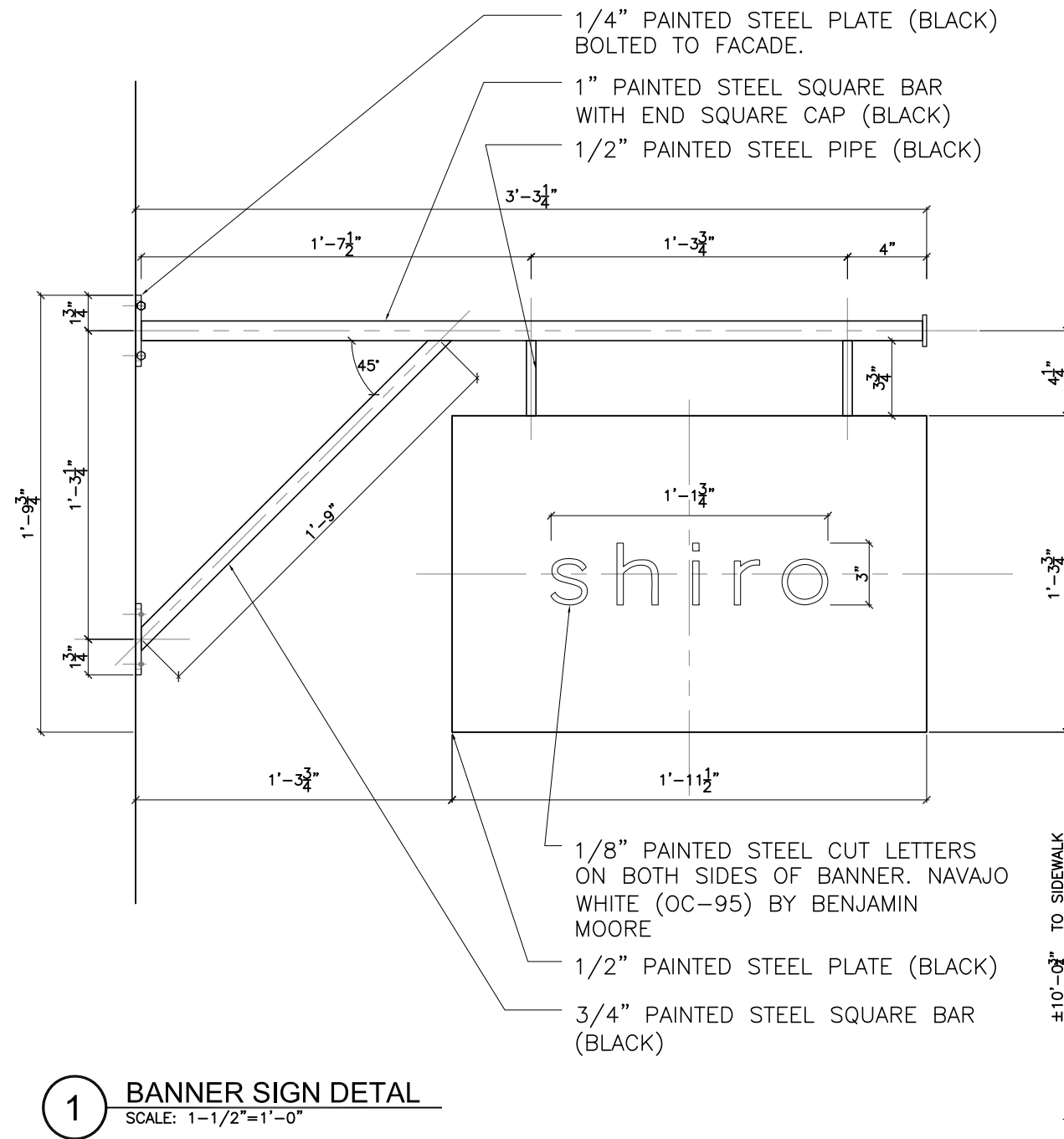


1 EXISTING FACADE

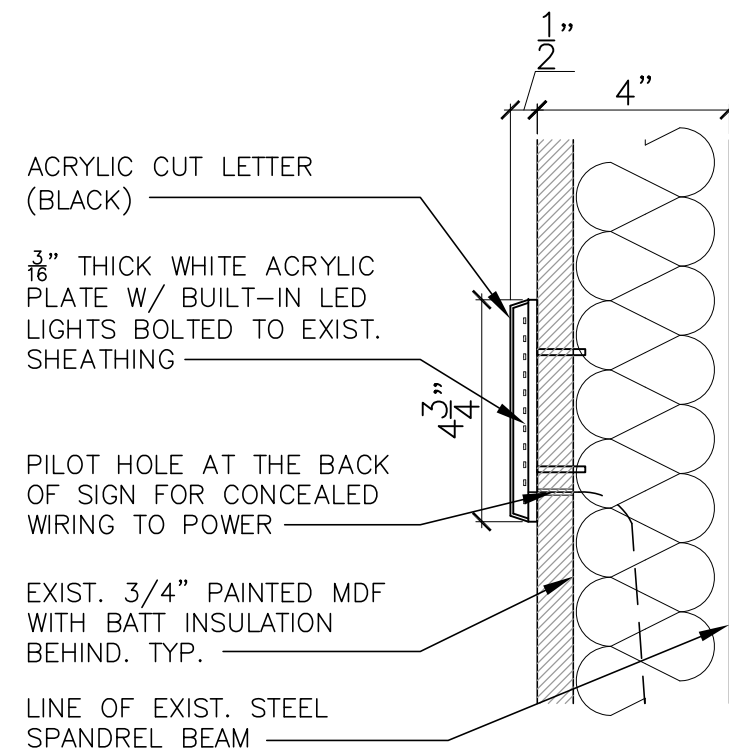
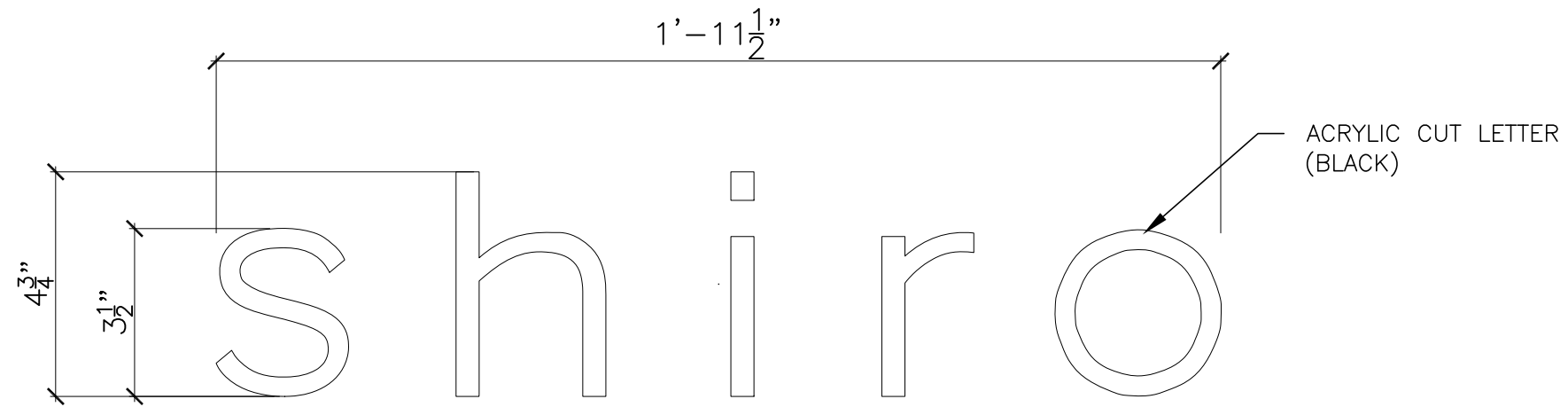


2 PROPOSED FACADE









DETAIL NOTE:  
EXTERIOR SIGNAGE  
CONSTRUCTED WITH  
WEATHERPROOF COMPONENTS

1 **EDGE-LIT SIGN DETAIL**  
SCALE: 3"=1'-0"







1 414-416 WEST BROADWAY  
ILLUMINATED SIGNAGE



2 380 WEST BROADWAY  
ILLUMINATED SIGNAGE



3 394 WEST BROADWAY  
ILLUMINATED SIGNAGE





1 434 WEST BROADWAY  
BRACKET SIGNAGE SPACING  
LA PERLA and FLYING SOLO - 18'-4"



2 129 PRINCE STREET  
BRACKET SIGNAGE SPACING  
UNTUCKit and lululemon - 19'-6"



3 120-124 PRINCE STREET  
BRACKET SIGNAGE SPACING  
Saje Natural Wellness and NIXON RETAIL - 8'-0"  
NIXON RETAIL and Wolford Boutique - 11'-8"  
Wolford Boutique to NARS Cosmetics Boutique - 16'-6"