

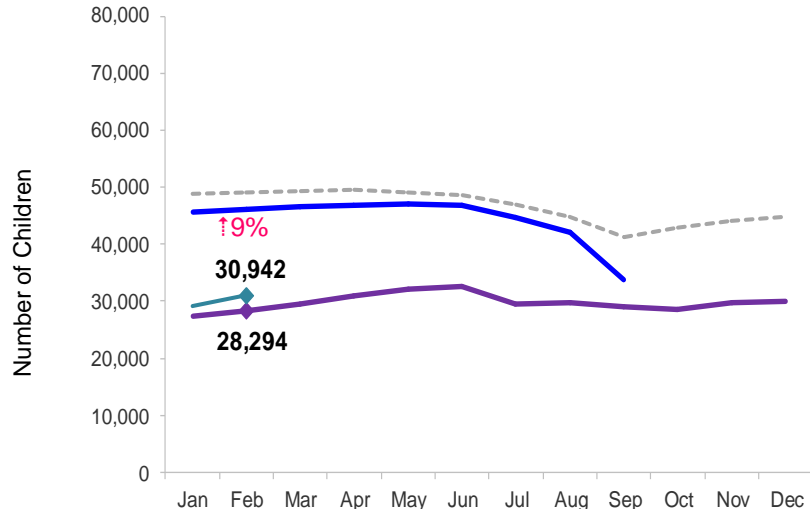


Flash

March 2014

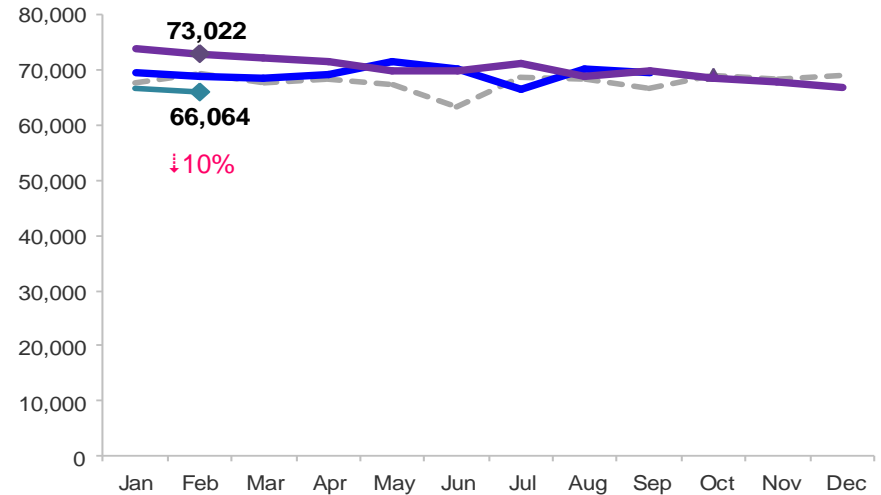
Children Enrolled in Contracted Early Learn Programs

January 2011 – February 2014 (End of Month)



Children Using Vouchers for Child Care

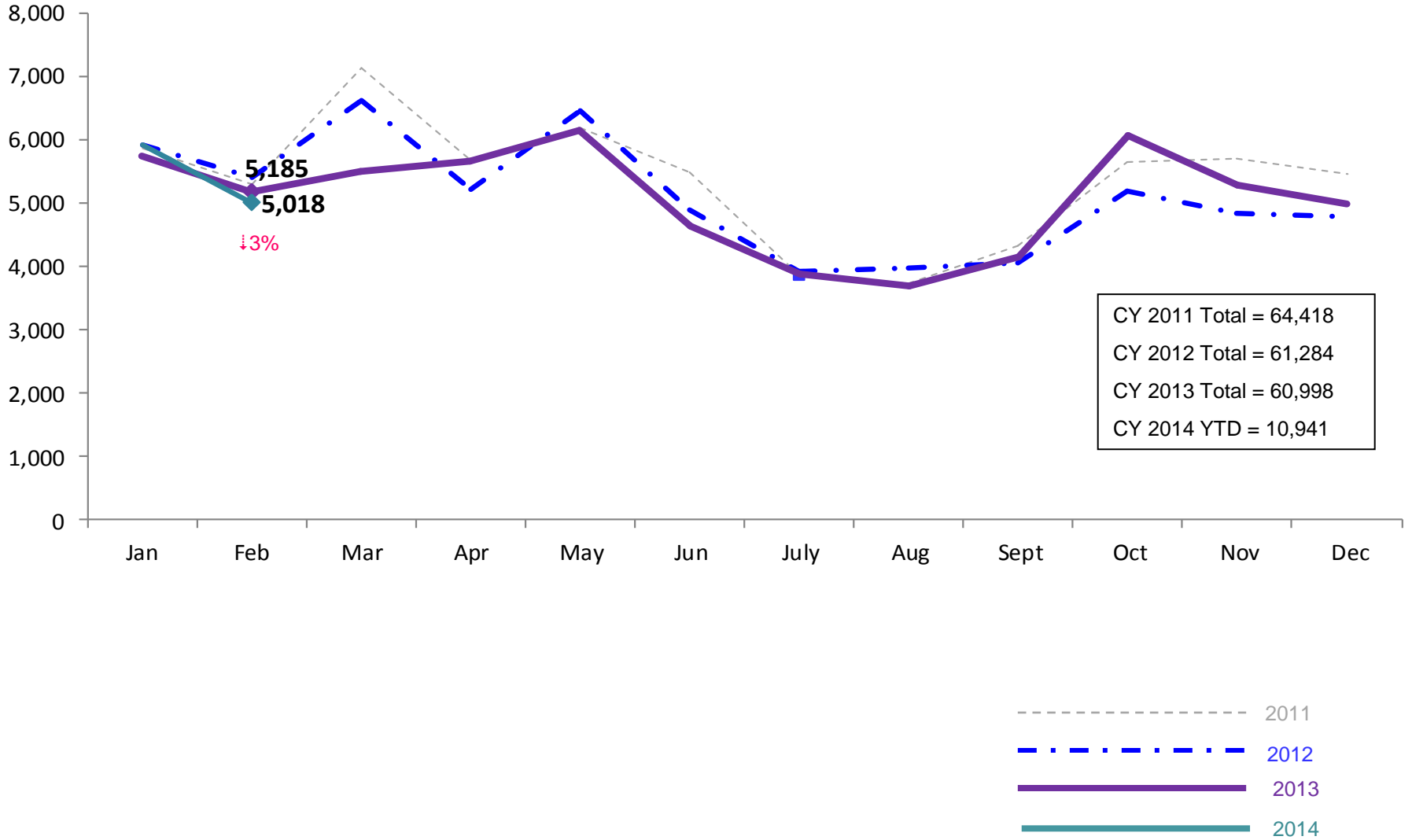
January 2011 – February 2014 (End of Month)



Notes: 1) Beginning October 1, 2012 ACS converted its early care and education system to a new model, Early Learn NYC. Enrollment data for the transitional months of October – December 2012 are not available because contractors were in the midst of implementing the data collection systems. 2) Percentage change is February 2013 vs. February 2014.

SCR Intakes

January 2011 – February 2014 (Monthly Total)

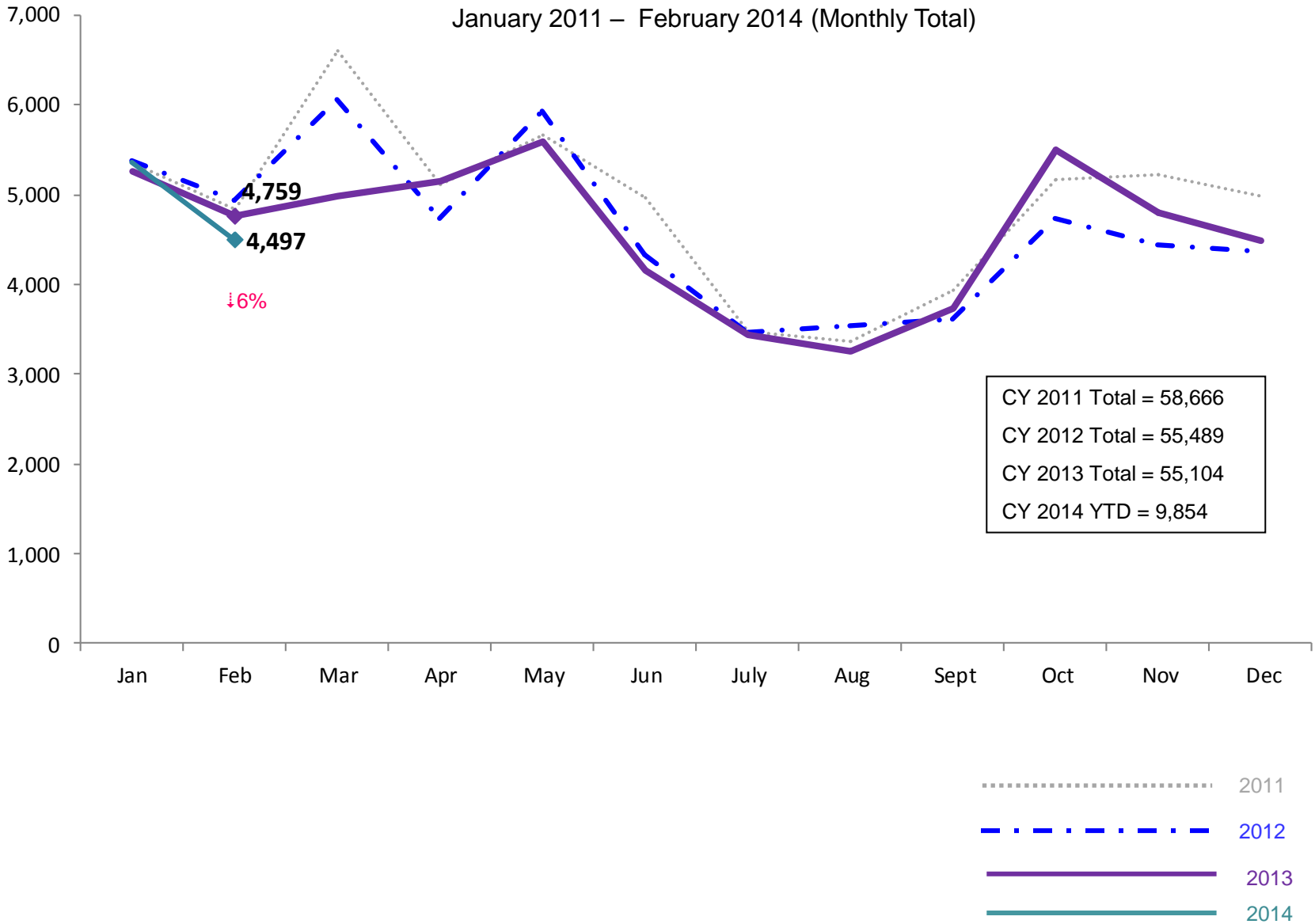


Note: Percentage change is February 2013 vs. February 2014.

See Pages 29 through 34 of the Appendix for supporting data.

SCR Consolidated Investigations

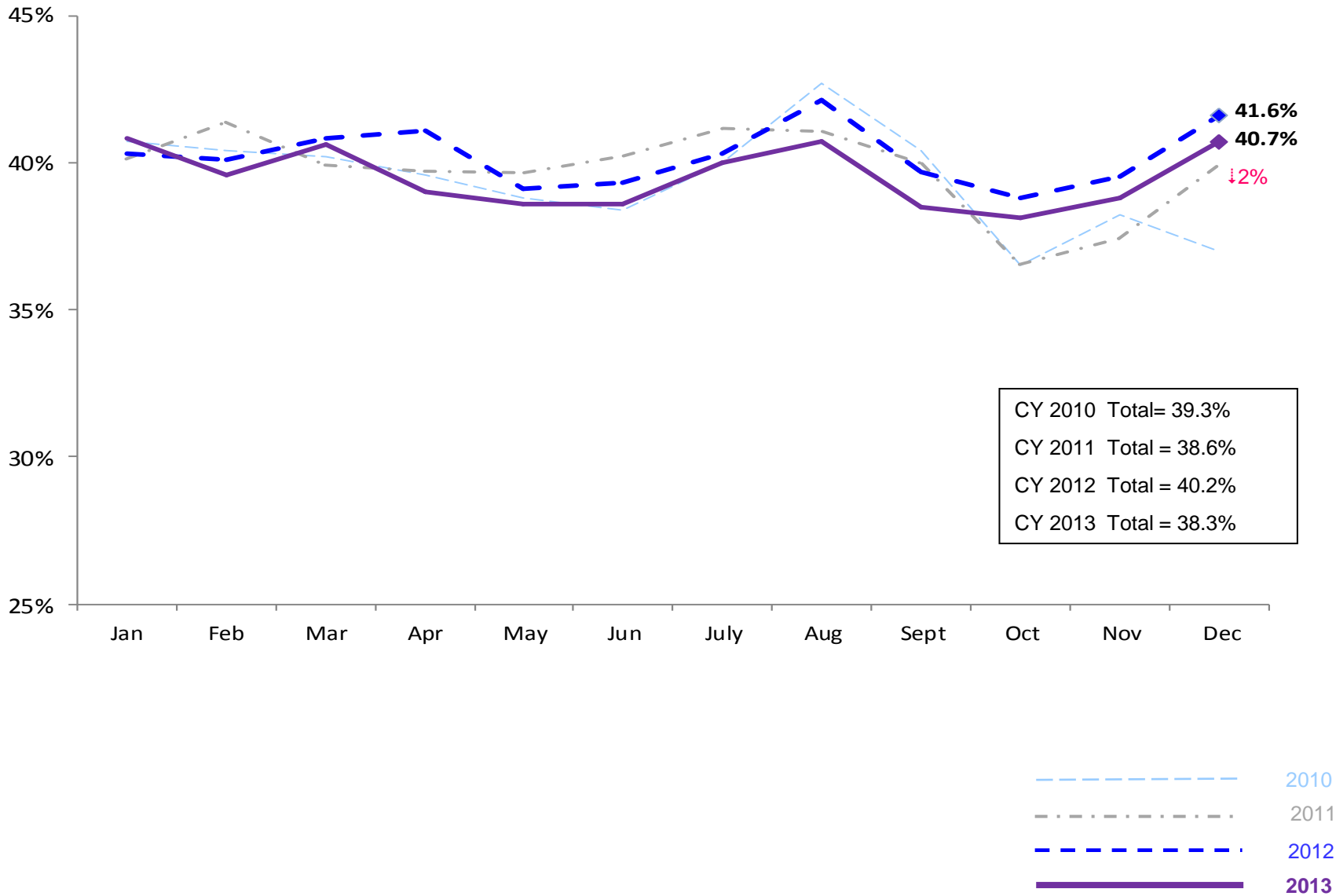
January 2011 – February 2014 (Monthly Total)



Note: Percentage change is February 2013 vs. February 2014.

SCR Investigation Indication Rate

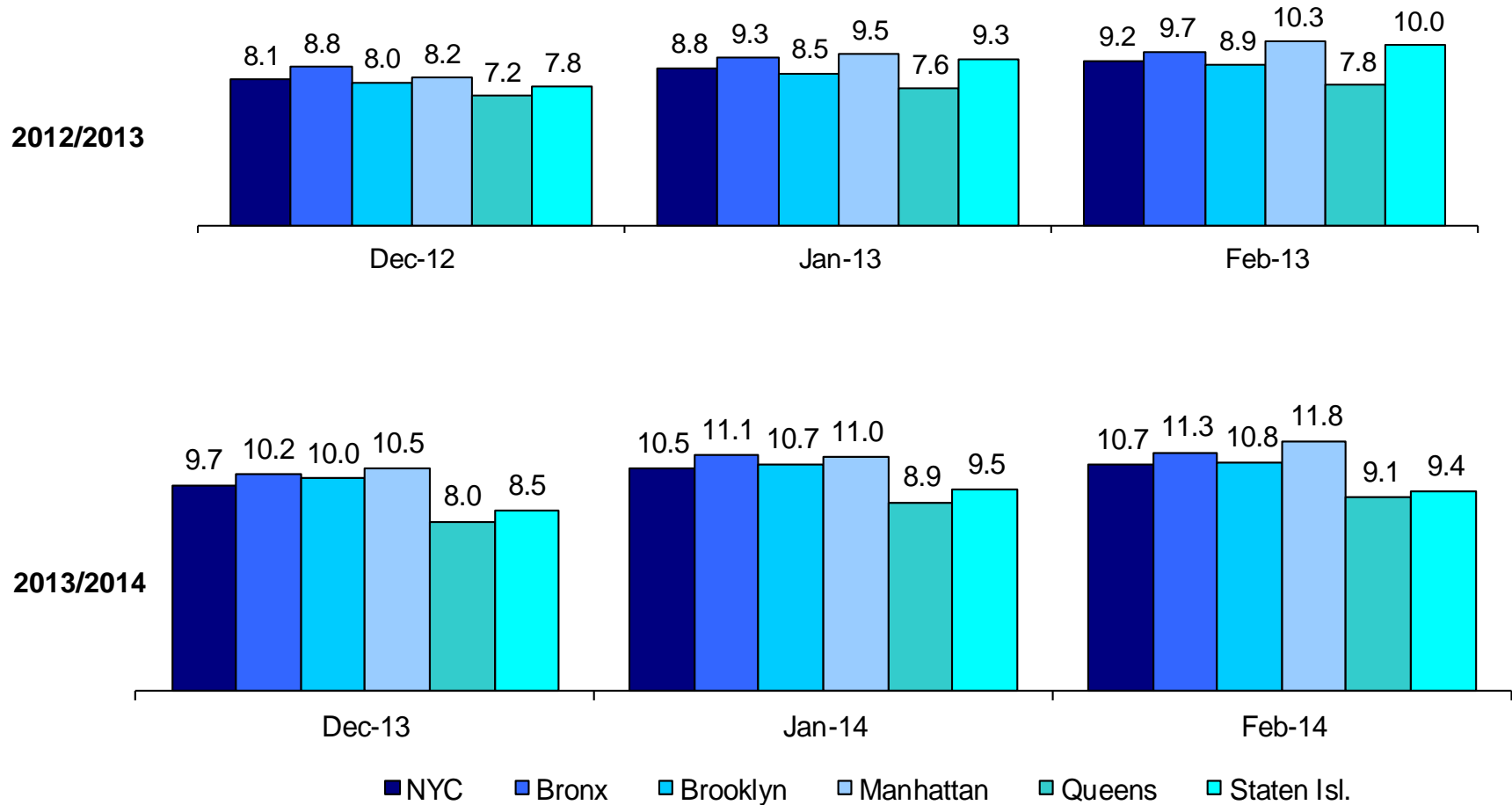
January 2010 – December 2013



Note: Percentage change is December 2012 vs. December 2013.

Average P/D Combined Caseload*

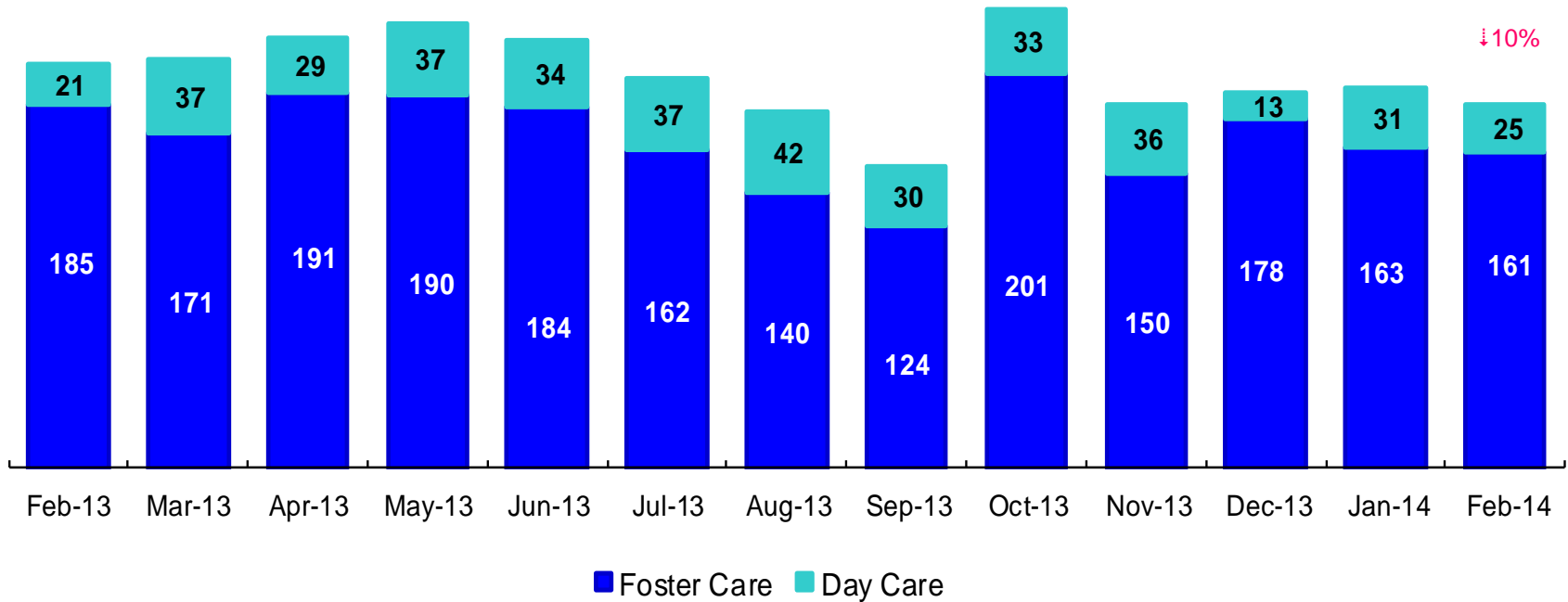
December 2012 – February 2013 & December 2013 – February 2014



* Caseloads are of protective/diagnostic caseworkers only and exclude the caseloads carried by Level I and Level II Supervisors. 6

OSI Investigations by Program

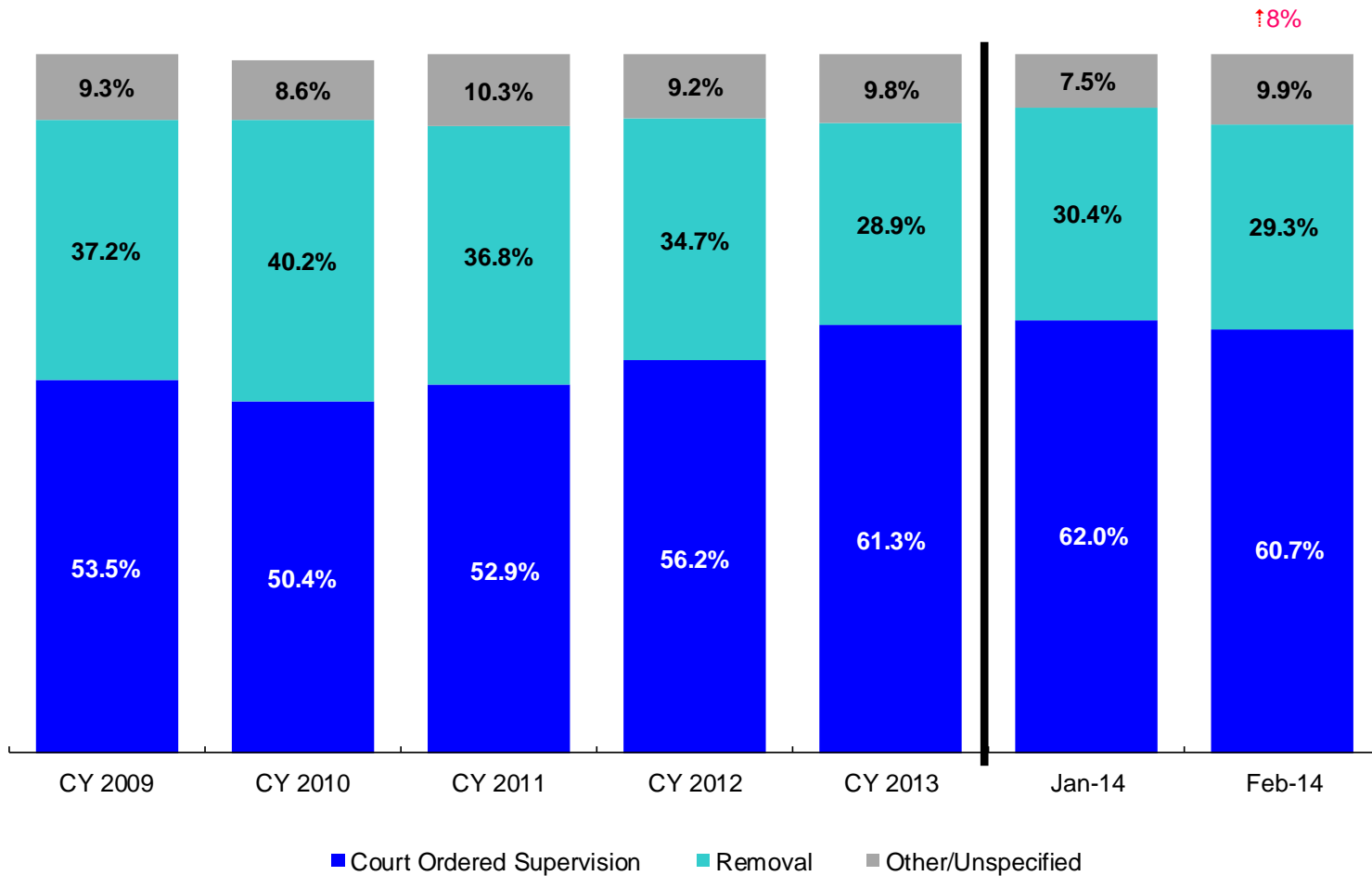
February 2013– February 2014



	Feb 2013	Mar 2013	Apr 2013	May 2013	Jun 2013	Jul 2013	Aug 2013	Sep 2013	Oct 2013	Nov 2013	Dec 2013	Jan 2014	Feb 2014
Number of Investigations	206	208	220	227	218	199	182	154	234	186	191	194	186

Note: Percentage change is February 2013 vs. February 2014.

Article 10 Total Filings & Filing Outcomes, CY 2009 - CY 2013 and January - February 2014

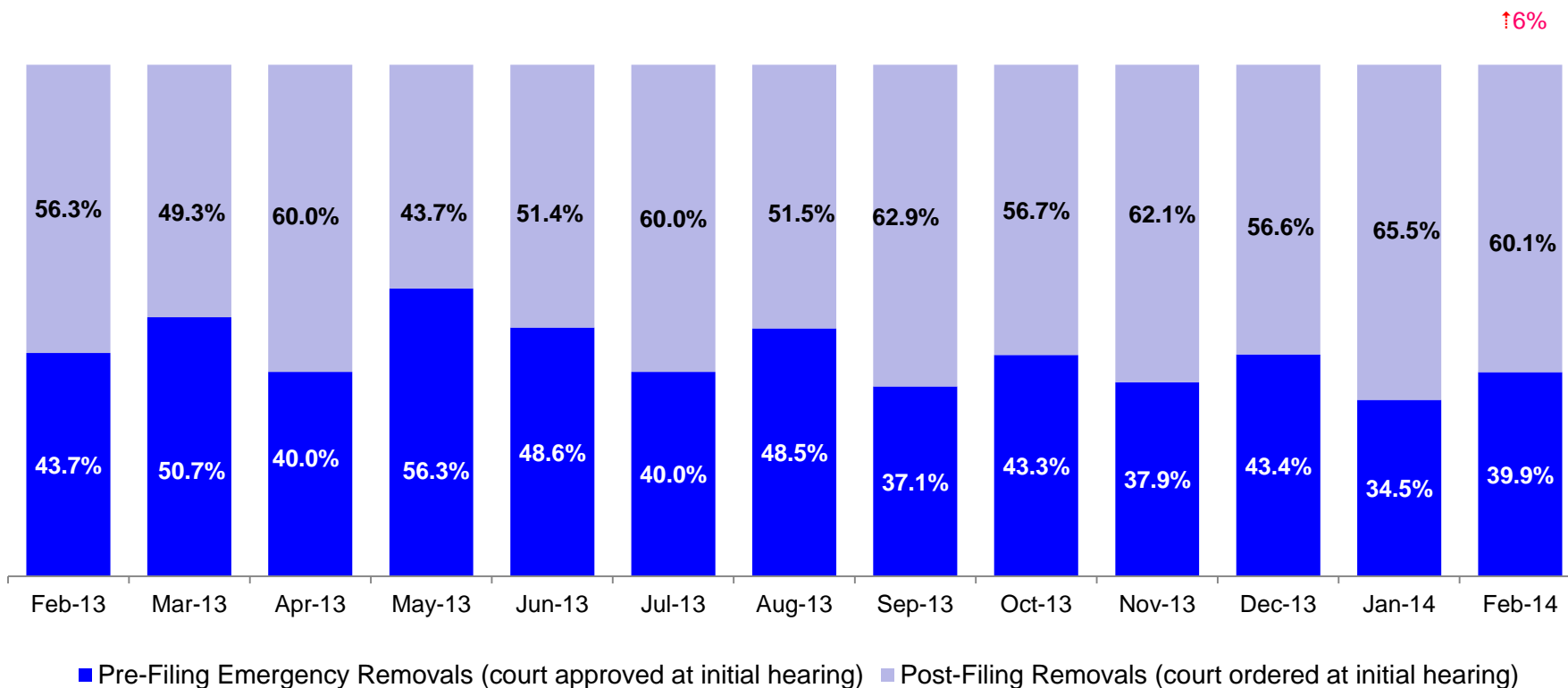


	CY 2009	CY 2010	CY 2011	CY 2012	CY 2013	Jan 2014	Feb 2014
Art.10 Filings	11,568	10,093	9,596	8,913	9,318	743	828

↑8%

Notes: 1) The category "Other/Unspecified" includes released with no supervision; no order issued and no outcome specified. Outcomes of cases heard the next day are not yet captured in this report. 2) Percentage change is February 2013 vs. February 2014.

Article 10 Filing Removals, February 2013 – February 2014



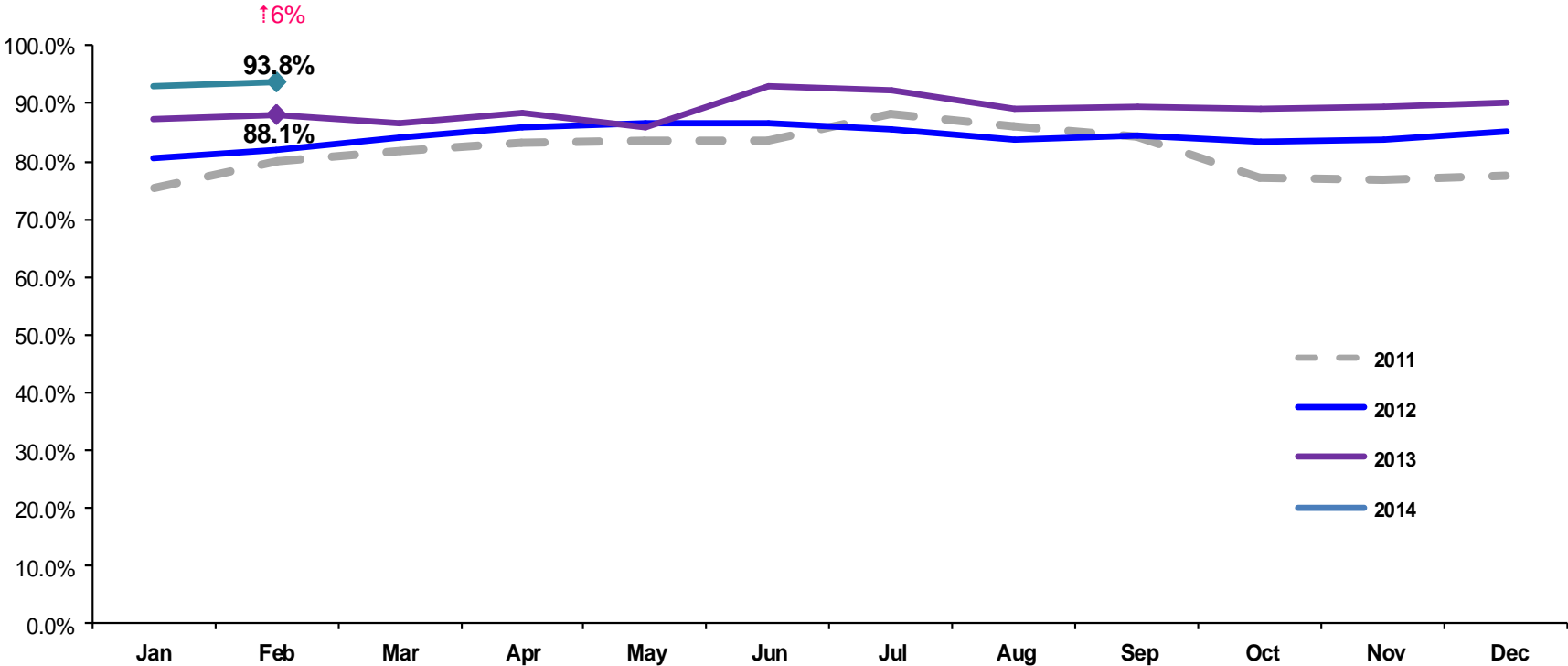
	Feb 2013	Mar 2013	Apr 2013	May 2013	Jun 2013	Jul 2013	Aug 2013	Sep 2013	Oct 2013	Nov 2013	Dec 2013	Jan 2014	Feb 2014
Number of Removals	229	223	200	247	220	220	200	229	261	224	212	226	243

Note: Percentage change is February 2013 vs. February 2014.

PPRS Utilization Rate

January 2011 – February 2014 (End of Month)

General Preventive

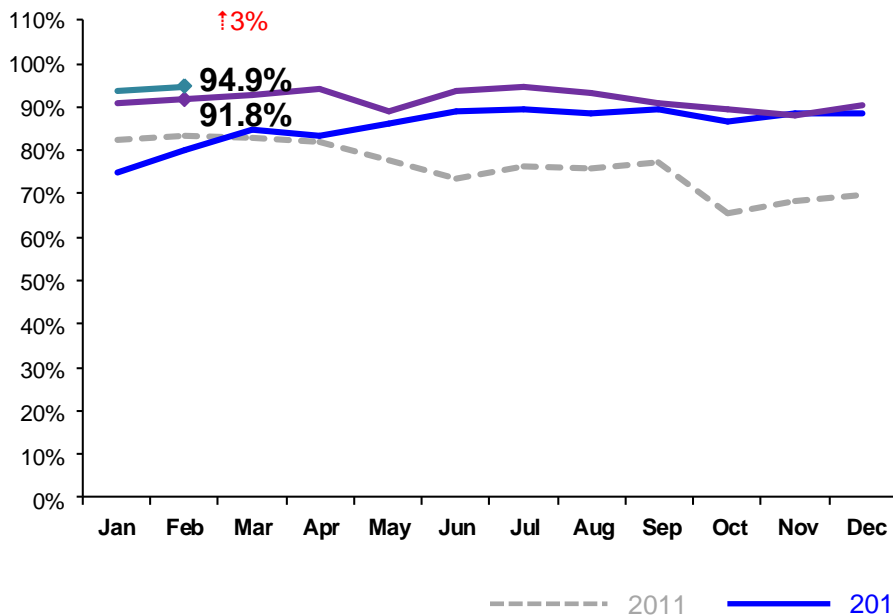


Notes: 1) Beacons programs are included in the GP utilization rates. 2) During February - June 2011 GP rates were adjusted by excluding programs in the process of being closed. GP rates were also adjusted during July – September 2011 by excluding newly opened programs. 3) During June-October 2013 GP programs in the process of converting to EBMs were excluded from the GP utilization statistics.) Percentage change is February 2013 vs. February 2014.

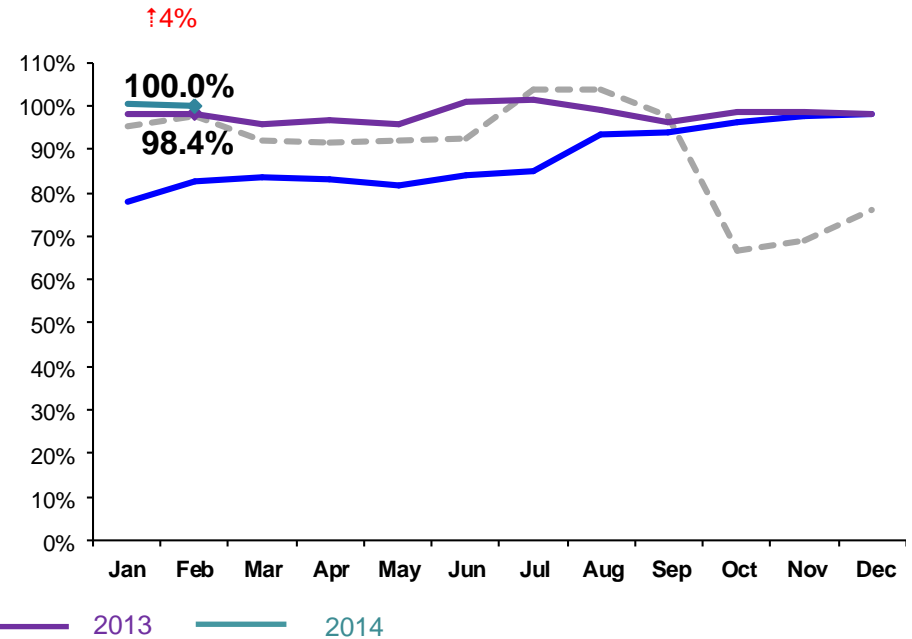
PPRS Utilization Rate

January 2011 – February 2014 (End of Month)

Family Rehabilitation Program/Family Treatment Rehabilitation



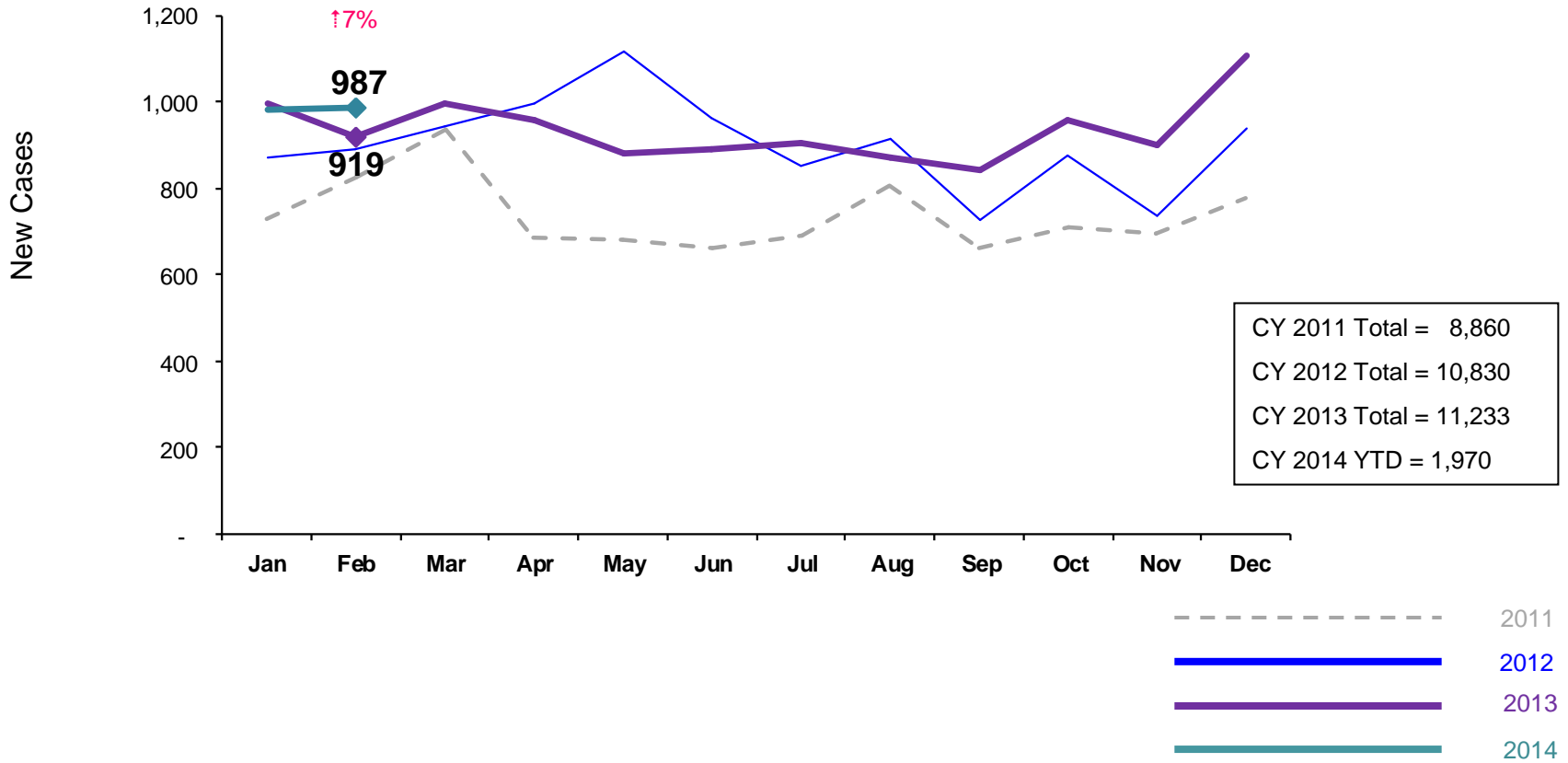
Medically Fragile



Notes: 1) During February - June 2011 FRP rates were adjusted by excluding programs in the process of being closed. FT/R rates were also adjusted during July – September 2011 by excluding newly opened programs. As of October 2011 all FT/R programs are included in the FT/R utilization rates. 2) Beginning July 2011 Family Treatment Rehabilitation programs replaced the Family Rehabilitation programs. 3) Beginning December 2011 the NYF Family Services for deaf Children and Adults program is no longer included in the medically fragile utilization rate. 4) During June -October 2013 FTR programs in the process of converting to EBMs were excluded from the FTR utilization statistics. 5) Percentage change is February 2013 vs. February 2014.

New Preventive Cases*

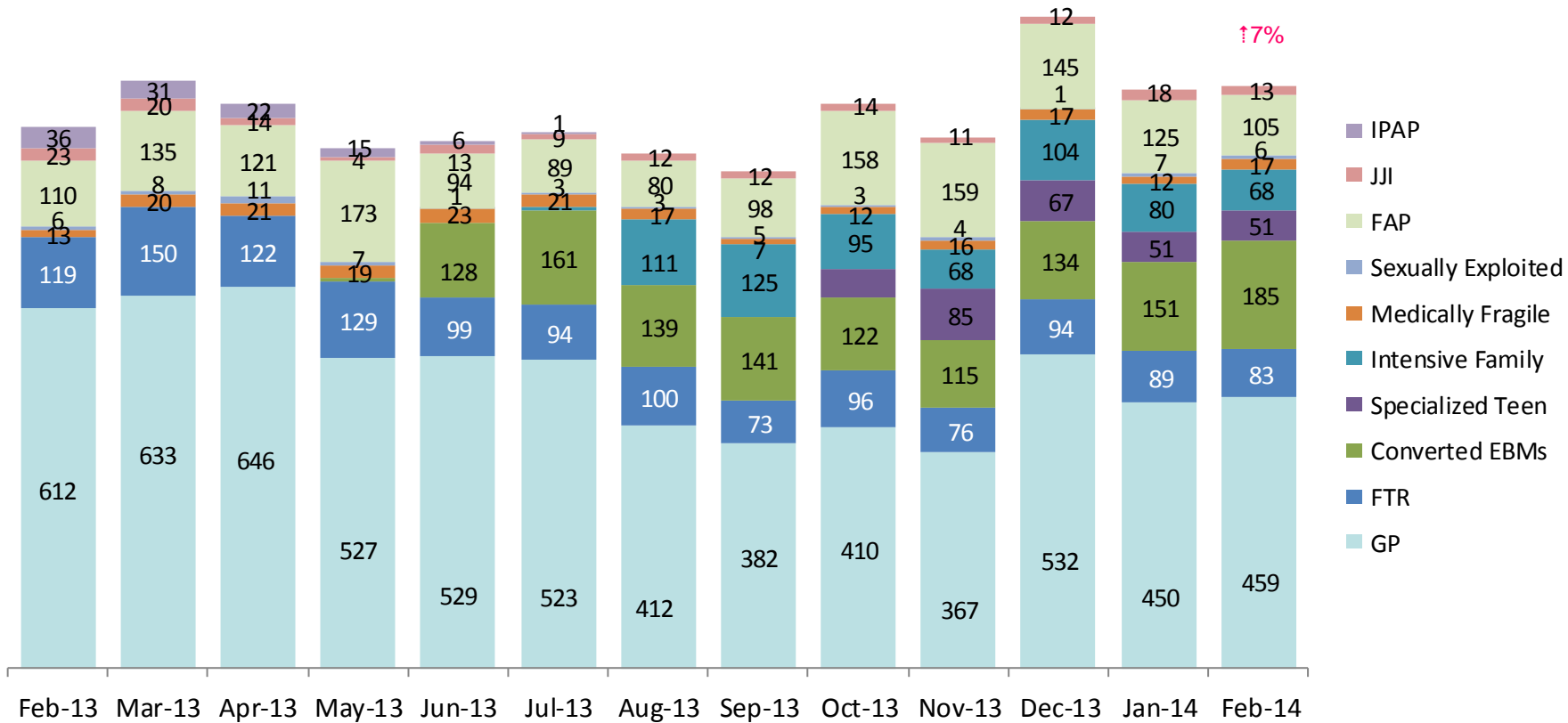
January 2011 – February 2014



*Notes: 1) New preventive cases do not include cases transferred from one preventive program to another. 2) Percentage change is February 2013 vs. February 2014. 3) See Pages 35 and 36 of the Appendix for supporting data.

New Preventive Cases* by Program Type

February 2013 – February 2014

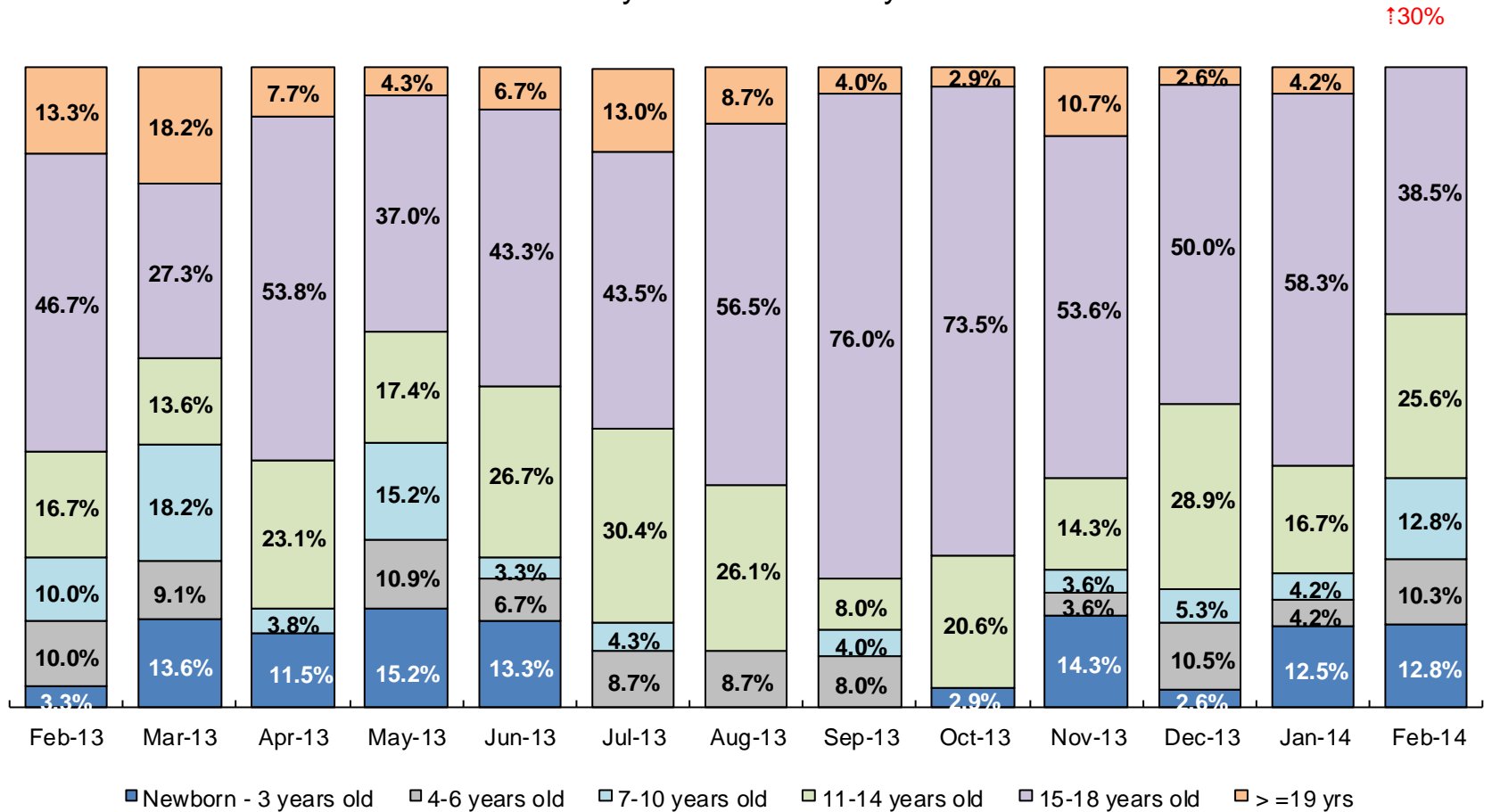


	Feb 2013	Mar 2013	Apr 2013	May 2013	Jun 2013	Jul 2013	Aug 2013	Sep 2013	Oct 2013	Nov 2013	Dec 2013	Jan 2014	Feb 2014
Number of New Preventive Cases	919	997	957	881	893	907	874	843	959	901	1,106	983	987

Notes: 1) New preventive cases do not include cases transferred from one preventive program to another. 2) Percentage change is February 2013 vs. February 2014.

Children's Center Population by Age

February 2013 – February 2014

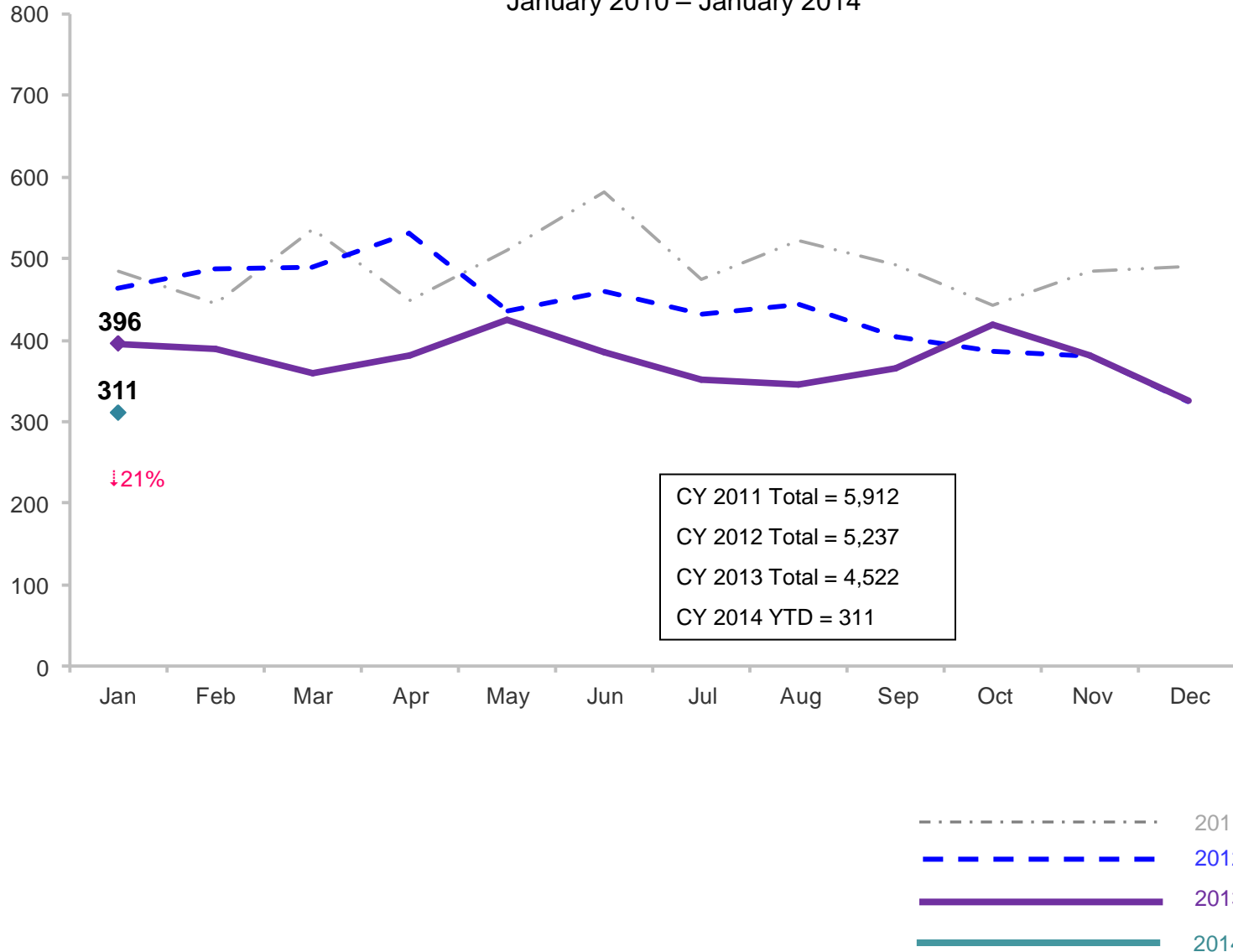


	Feb 2013	Mar 2013	Apr 2013	May 2013	Jun 2013	Jul 2013	Aug 2013	Sep 2013	Oct 2013	Nov 2013	Dec 2013	Jan 2014	Feb 2014
Number of Children	30	22	26	46	30	23	23	25	34	28	38	24	39

Note: Percentage change is February 2013 vs. February 2014.

Total Monthly Placements

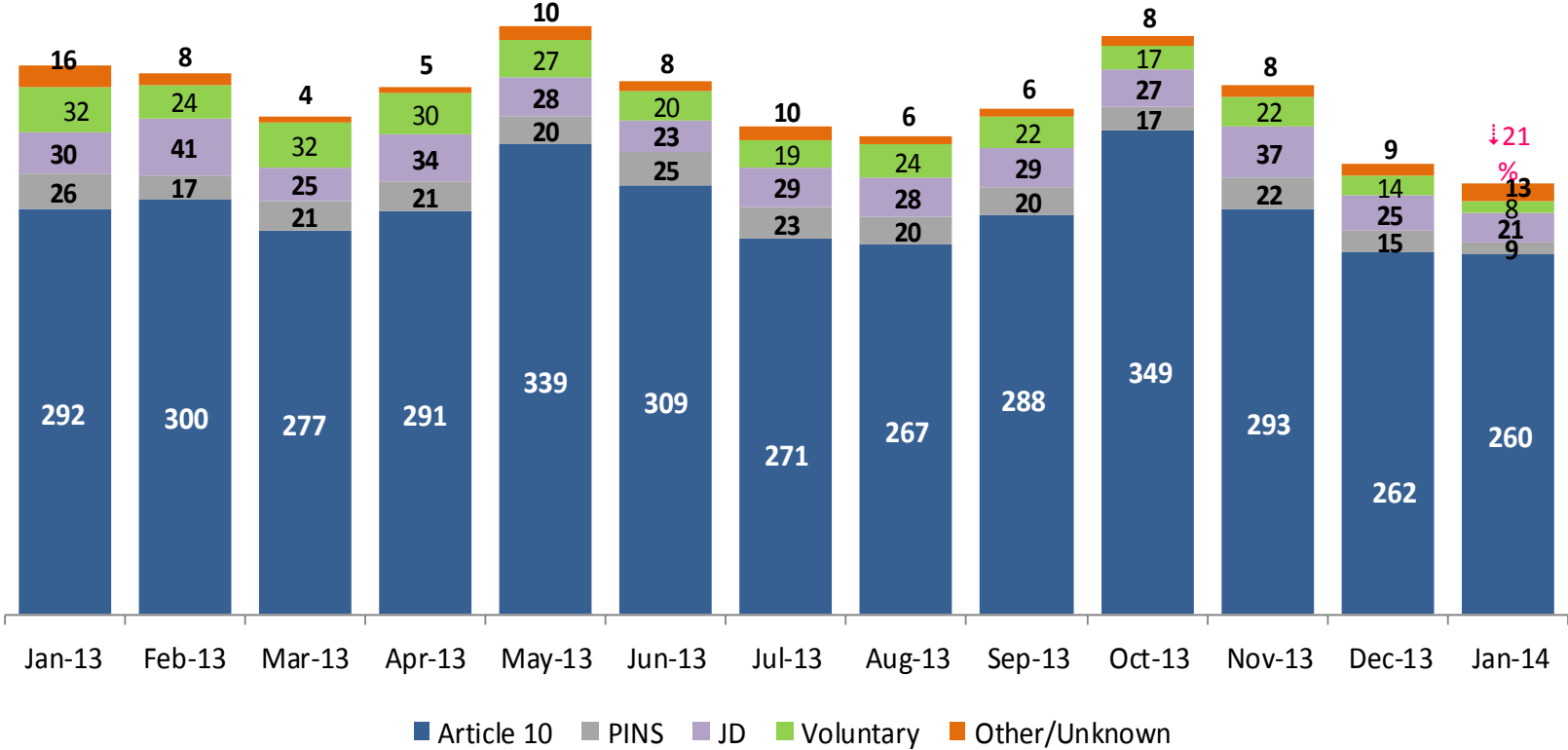
January 2010 – January 2014



Note: Percentage change is January 2013 vs. January 2014.

Reason for Initial Placements into Foster Care

January 2013 – January 2014

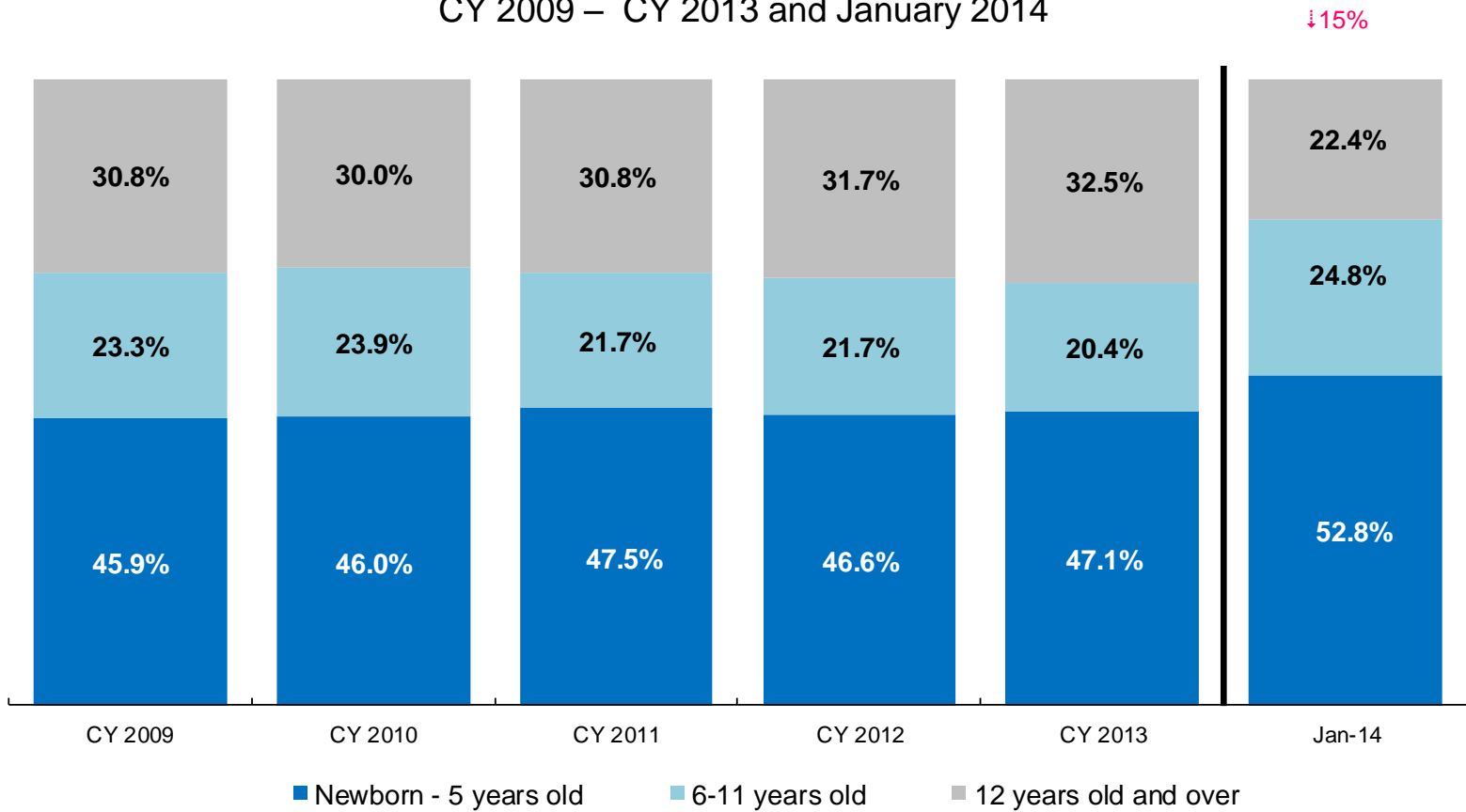


	Jan 2013	Feb 2013	Mar 2013	Apr 2013	May 2013	Jun 2013	Jul 2013	Aug 2013	Sep 2013	Oct 2013	Nov 2013	Dec 2013	Jan 2014
Number of Placements	396	390	359	381	424	385	352	345	365	418	382	325	311

Note: Percentage change is January 2013 vs. January 2014.

Placements* by Age

CY 2009 – CY 2013 and January 2014

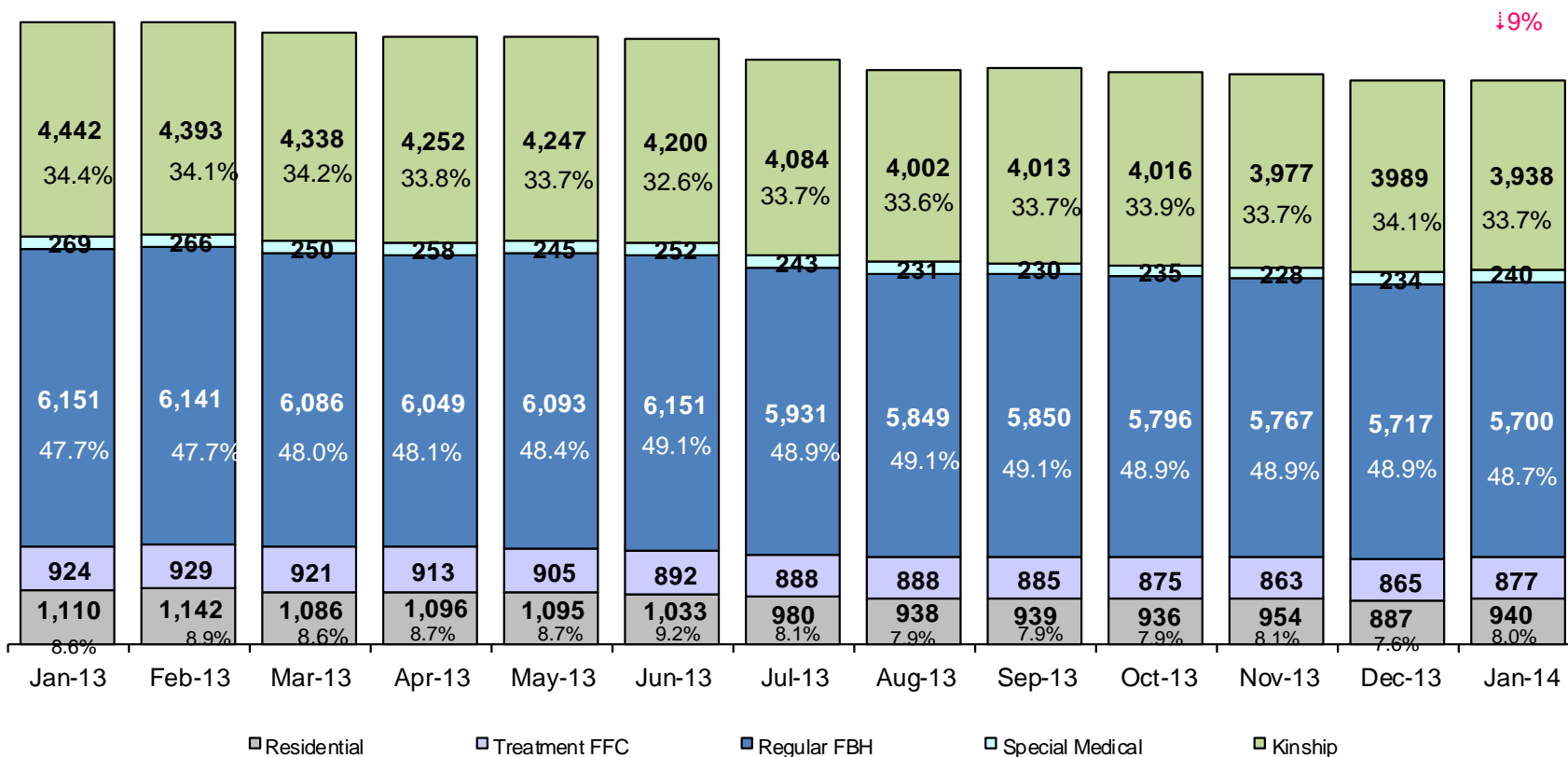


	CY 2008	CY 2009	CY 2010	CY 2011	CY 2012	CY 2013	Jan 2014
Placements	4,764	5,657	5,842	4,941	4,823	4,166	290

*Excludes JD placements.

Note: Percentage change is CY 2012 vs. CY 2013.

Children in Foster Care* January 2013 – January 2014 (end of month)

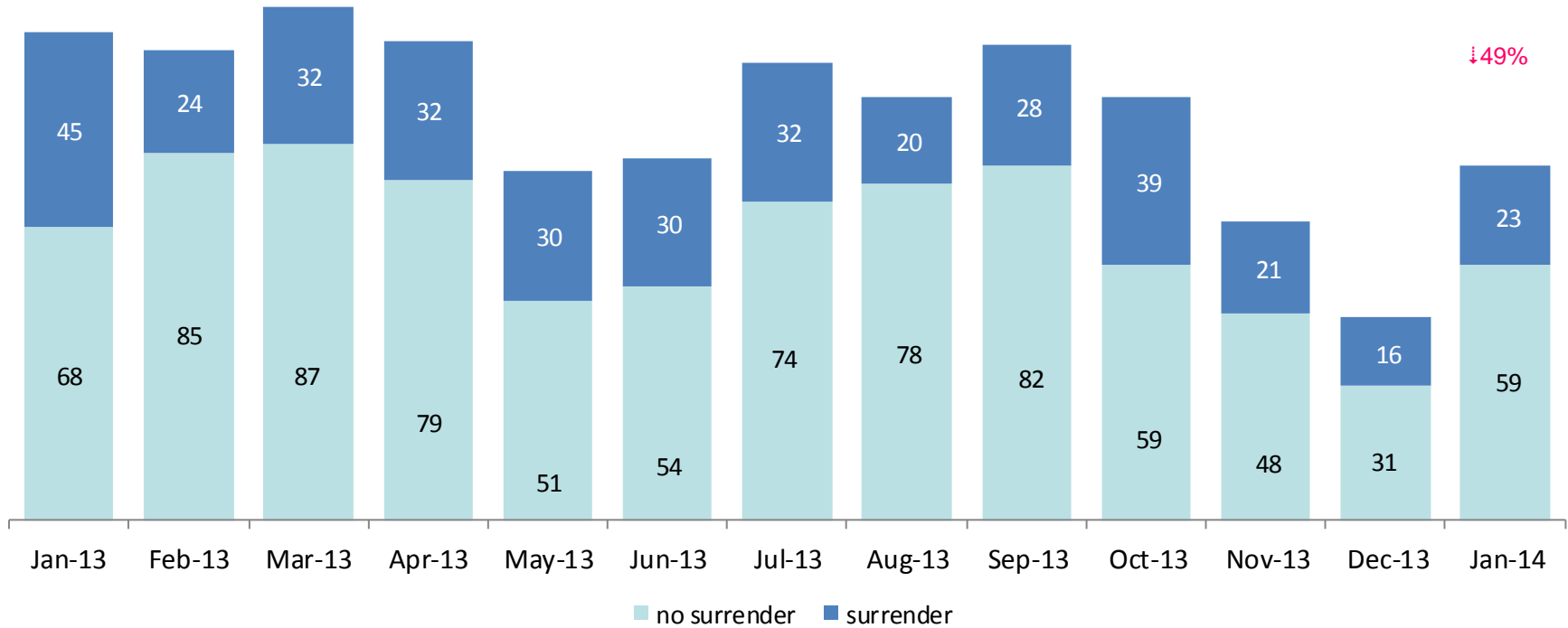


	Jan 2013	Feb 2013	Mar 2013	Apr 2013	May 2013	Jun 2013	Jul 2013	Aug 2013	Sep 2013	Oct 2013	Nov 2013	Dec 2013	Jan 2014
Number in Foster Care	12,896	12,871	12,681	12,568	12,585	12,528	12,126	11,908	11,917	11,858	11,789	11,692	11,695

*Excludes JD placements and includes approximately 400 young children who are living in foster homes or residential care facilities with their mothers who are in foster care (8D children).

Note: Percentage change is January 2013 vs. January 2014.

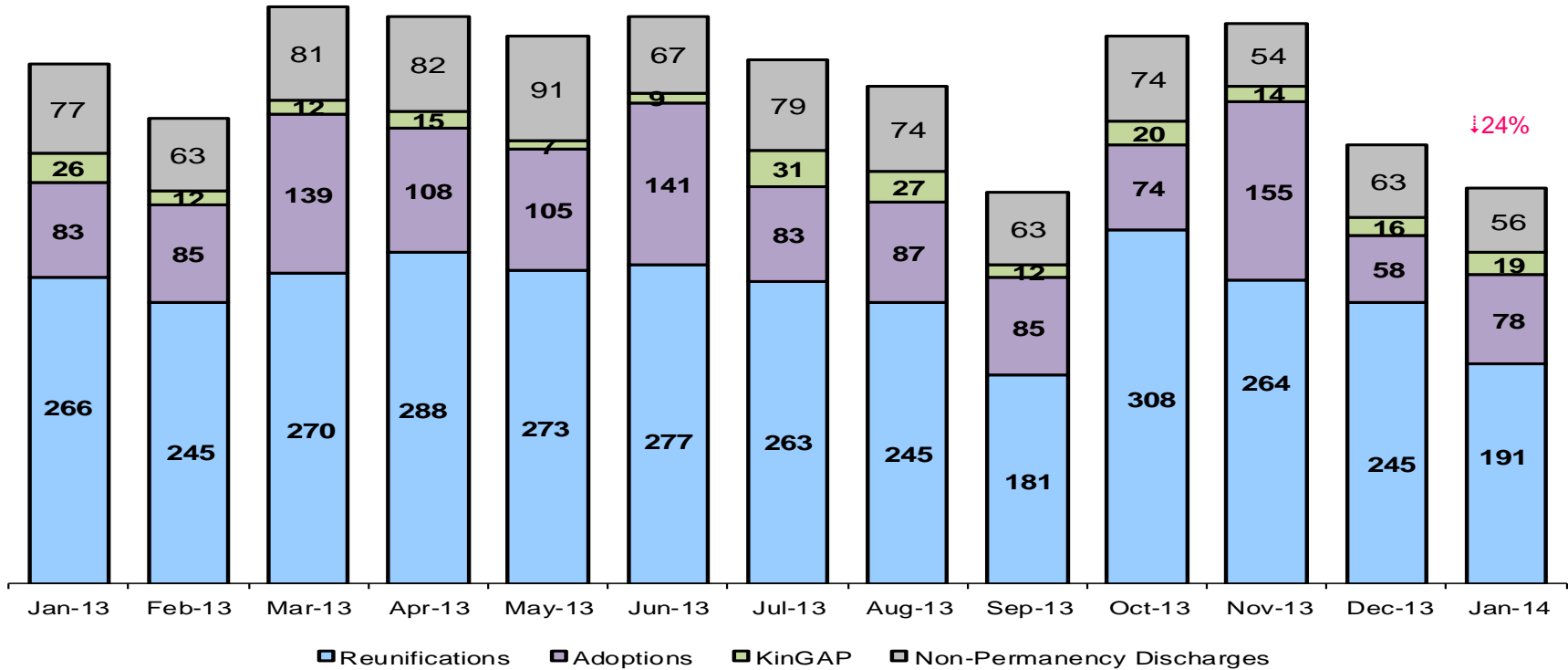
Children Freed for Adoption, Surrender by at Least One Parent January 2013 – January 2014



	Jan 2013	Feb 2013	Mar 2013	Apr 2013	May 2013	Jun 2013	Jul 2013	Aug 2013	Sep 2013	Oct 2013	Nov 2013	Dec 2013	Jan 2014
Number Freed for Adoption	113	109	119	111	81	84	106	98	110	98	69	47	82

Note: Percentage change is for the number of children surrendered by at least on parent during January 2013 vs. January 2014.

Permanency and Non-Permanency* Discharges from Foster Care** January 2013 – January 2014



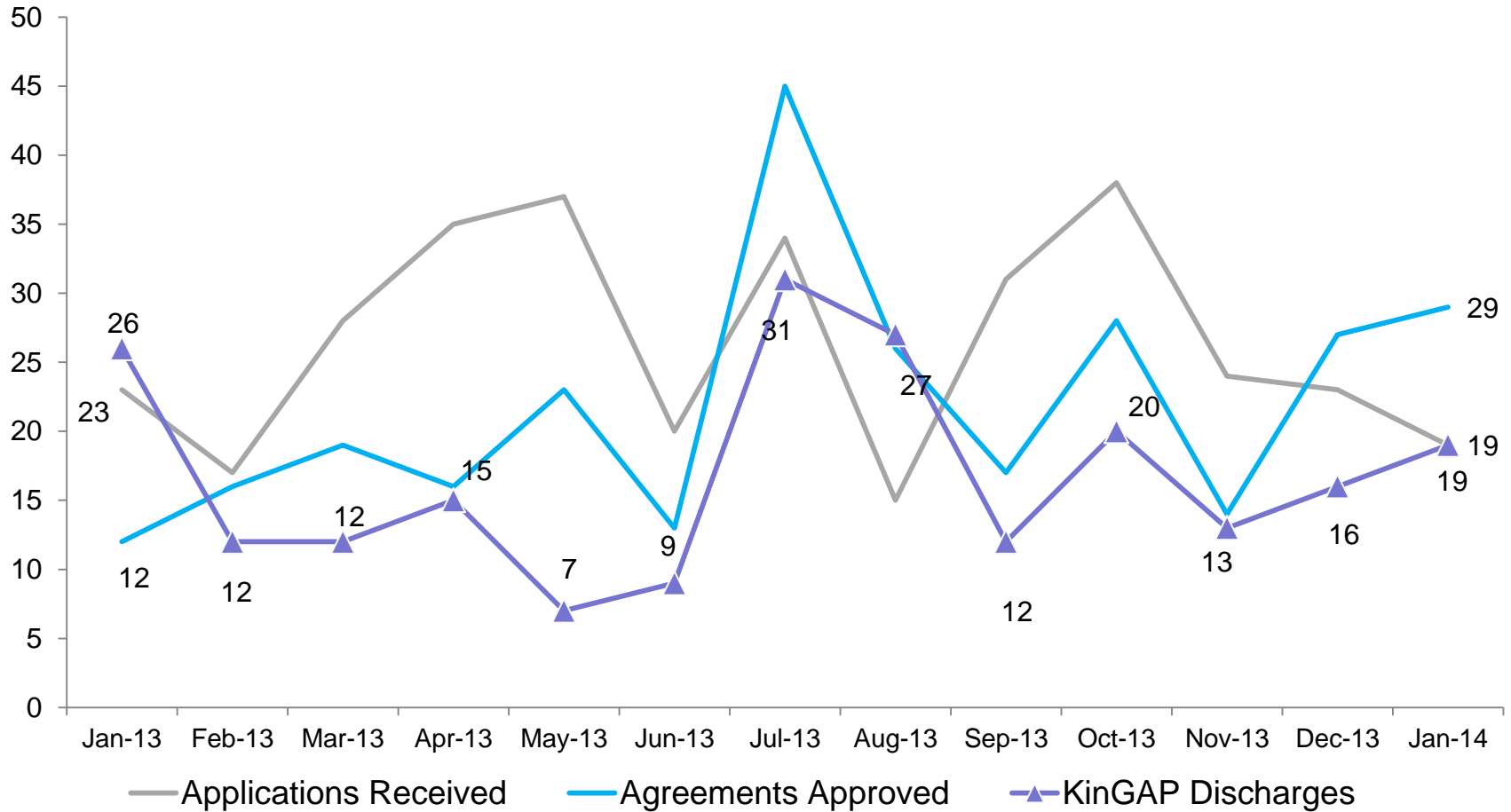
	Jan 2013	Feb 2013	Mar 2013	Apr 2013	May 2013	Jun 2013	Jul 2013	Aug 2013	Sep 2013	Oct 2013	Nov 2013	Dec 2013	Jan 2014
Number of Discharges	452	405	504	493	476	494	456	433	341	476	487	382	344

*Non-permanency discharges include AWOL, APPLA as well as other discharge destinations such as mental institutions and correctional facilities and discharges with unspecified destinations.

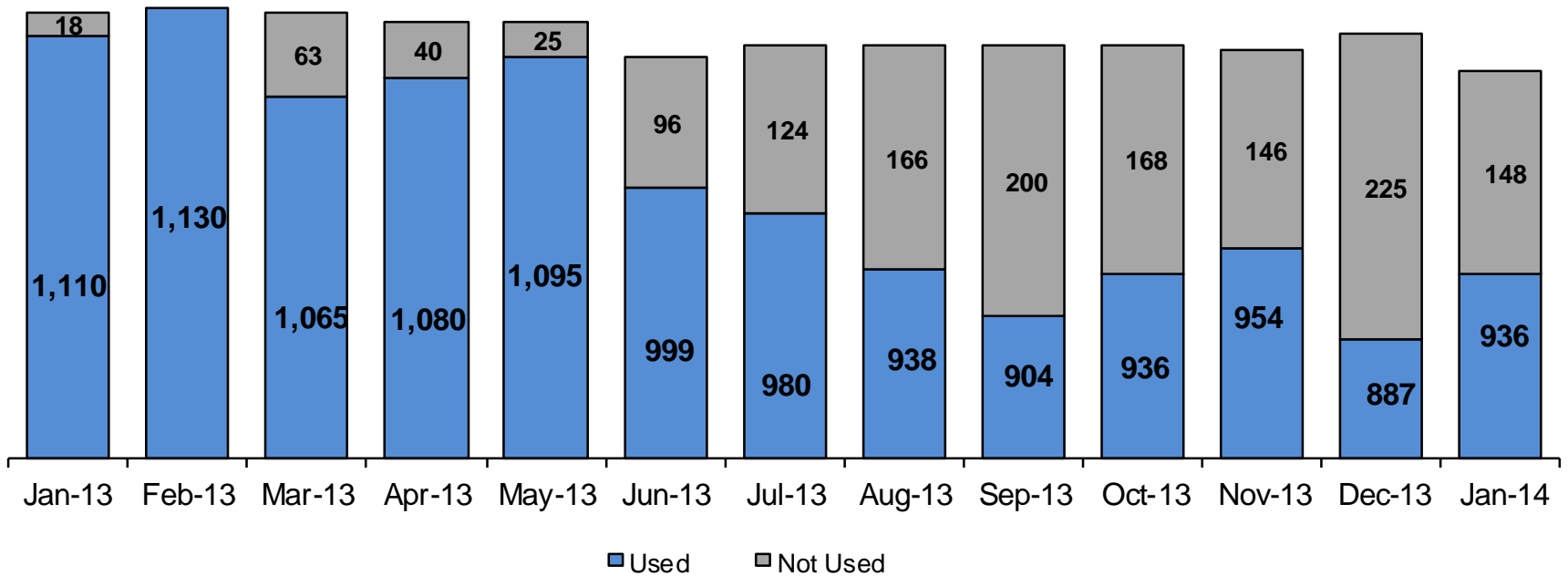
**Excludes discharges of youth who were in JD status at any time during their foster care spell.

Note: Percentage change is January 2013 vs. January 2014.

KinGAP Applications Received, Agreements Approved and Discharges, January 2013 – January 2014



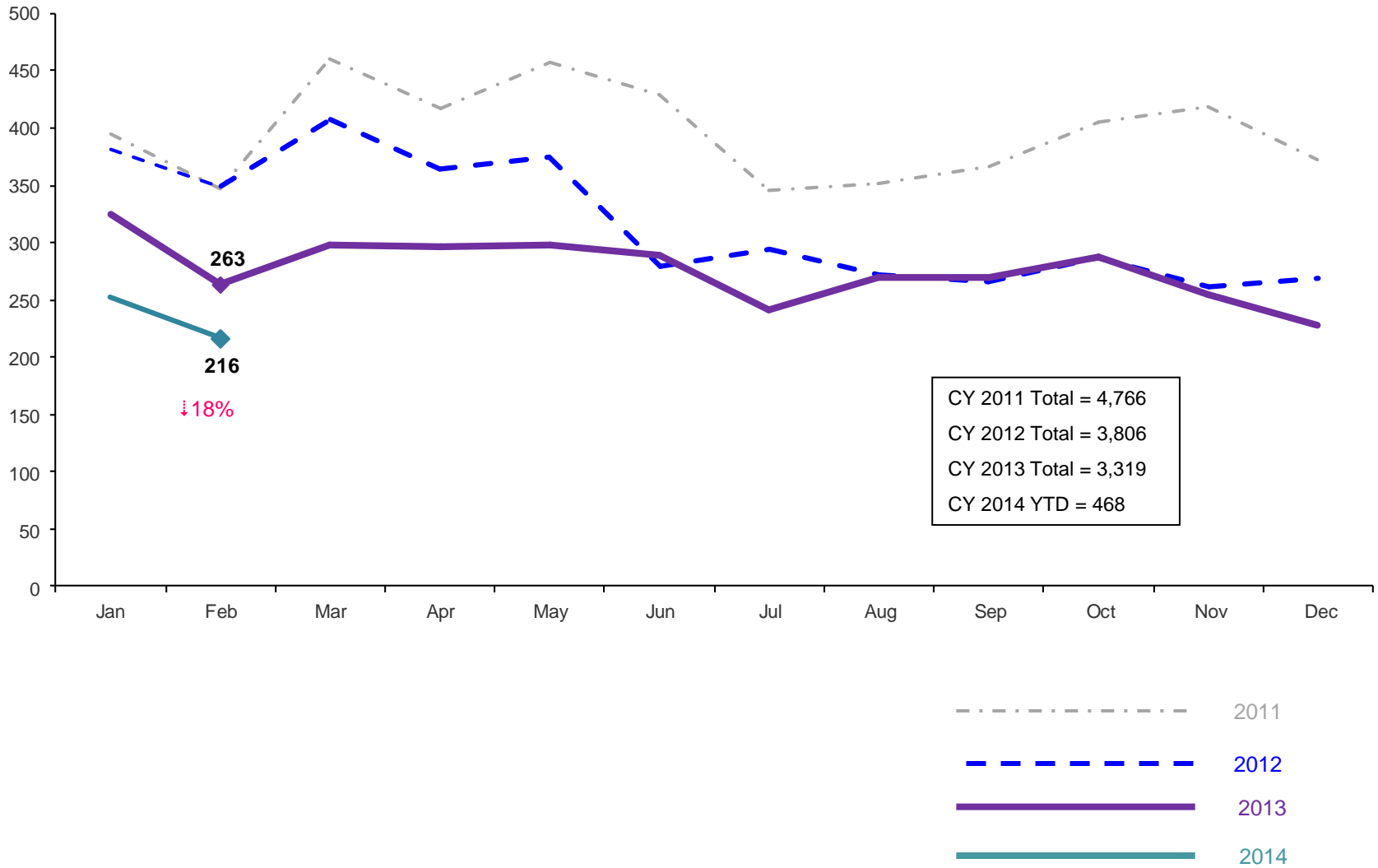
Residential Care Capacity and Utilization, January 2013 – January 2014



	Jan 2013	Feb 2013	Mar 2013	Apr 2013	May 2013	Jun 2013	Jul 2013	Aug 2013	Sep 2013	Oct 2013	Nov 2013	Dec 2013	Jan 2014
Capacity	1,128	1,128	1,128	1,120	1,120	1,095	1,104	1,104	1,104	1,104	1,100	1,112	1,084

Total Monthly Admissions to Detention

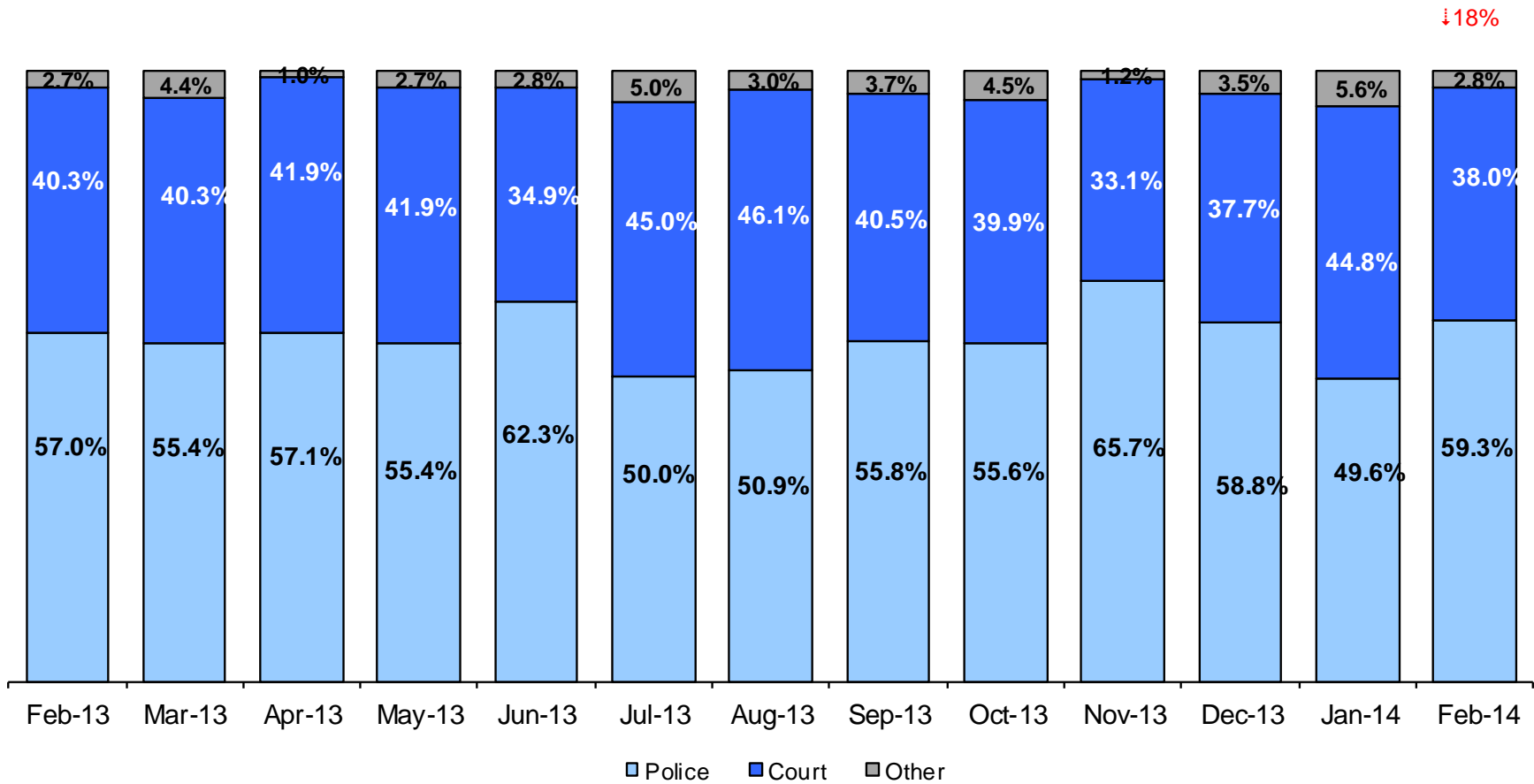
January 2011 - February 2014 (Monthly Total)



Note: Percentage change is February 2013 vs. February 2014.

Admit Authority on Admissions

February 2013 - February 2014(Monthly Total)



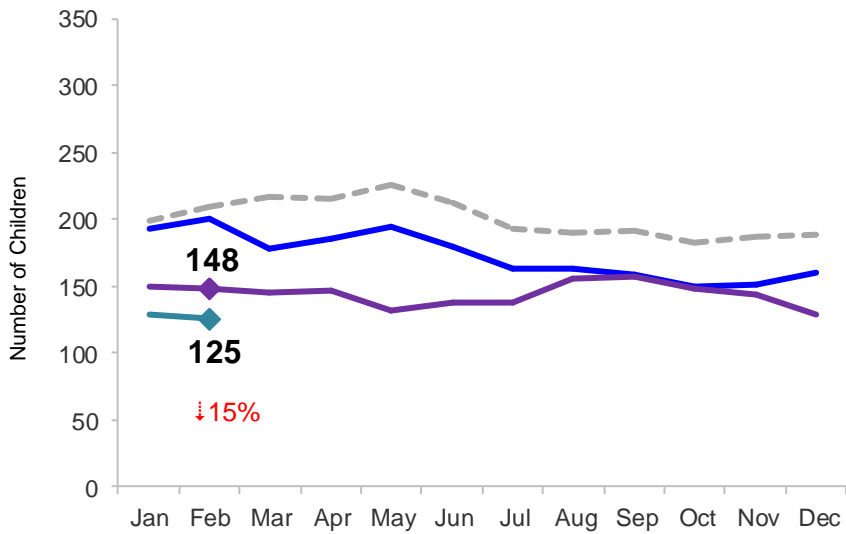
	Feb 2013	Mar 2013	Apr 2013	May 2013	Jun 2013	Jul 2013	Aug 2013	Sep 2013	Oct 2013	Nov 2013	Dec 2013	Jan 2014	Feb 2014
Number of Admissions	263	298	296	298	289	242	269	269	288	254	228	252	216

Notes: 1) Other Admit Authority includes The Sheriff Department, Department of Corrections and ACS. 2) Percentage change is February 2013 vs. February 2014.

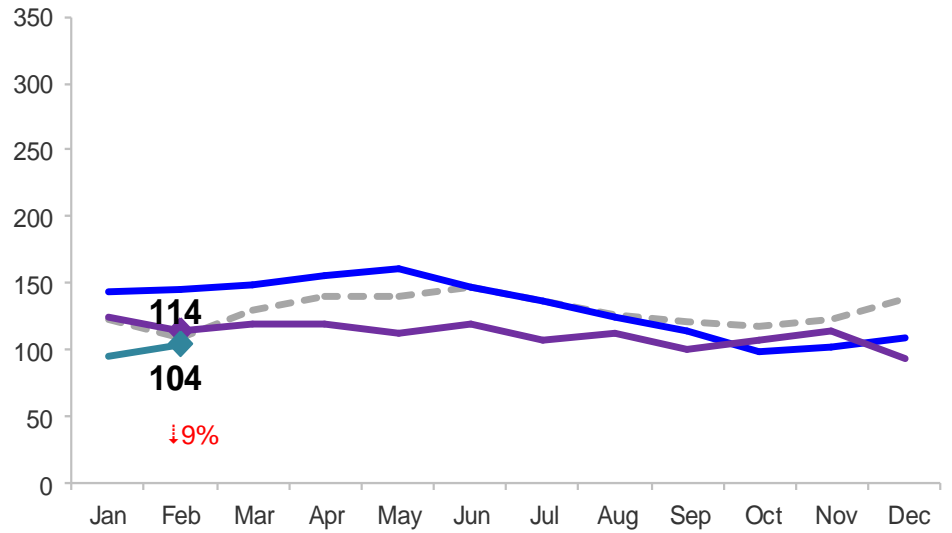
Monthly Average Daily Population

January 2011 – February 2014

Secure Detention



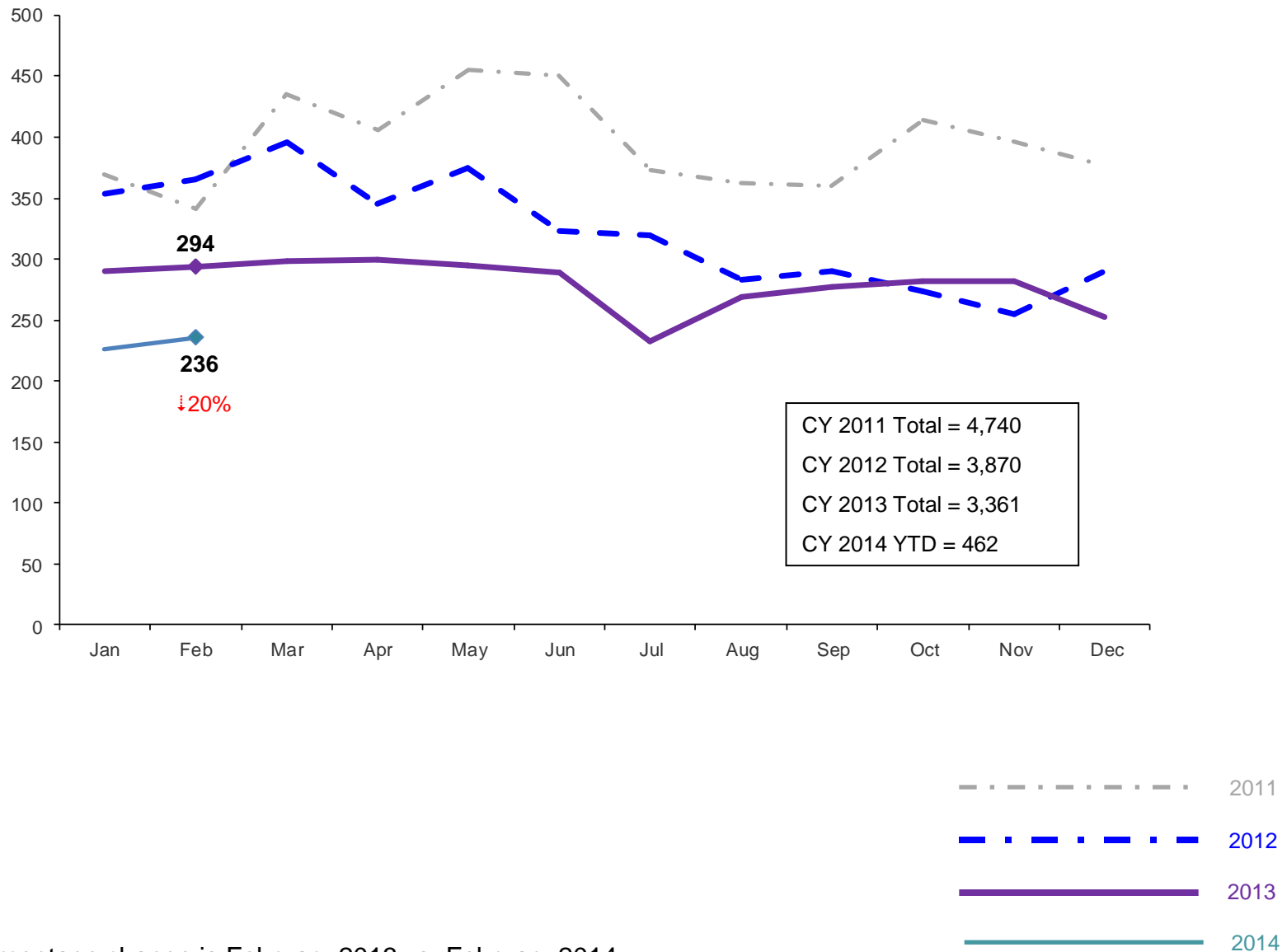
Non-Secure Detention



Note: Percentage change is February 2013 vs. February 2014.

Total Monthly Releases from Detention

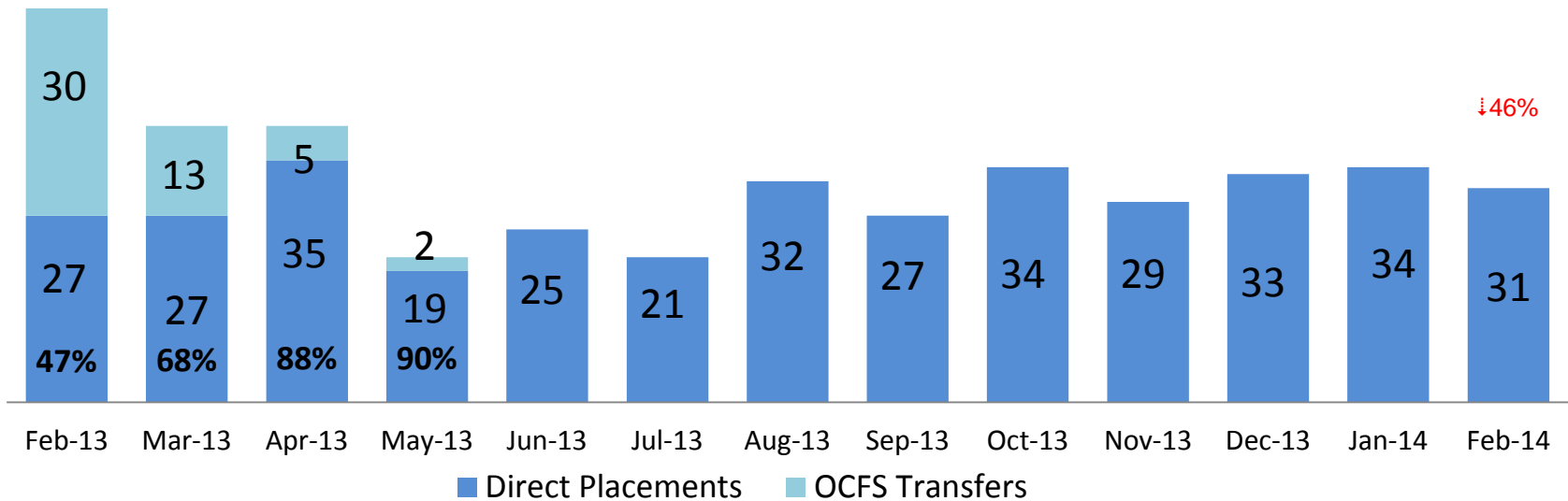
January 2011 – February 2014 (Monthly Total)



Note: Percentage change is February 2013 vs. February 2014.

ACS NSP Intakes

February 2013 – February 2014



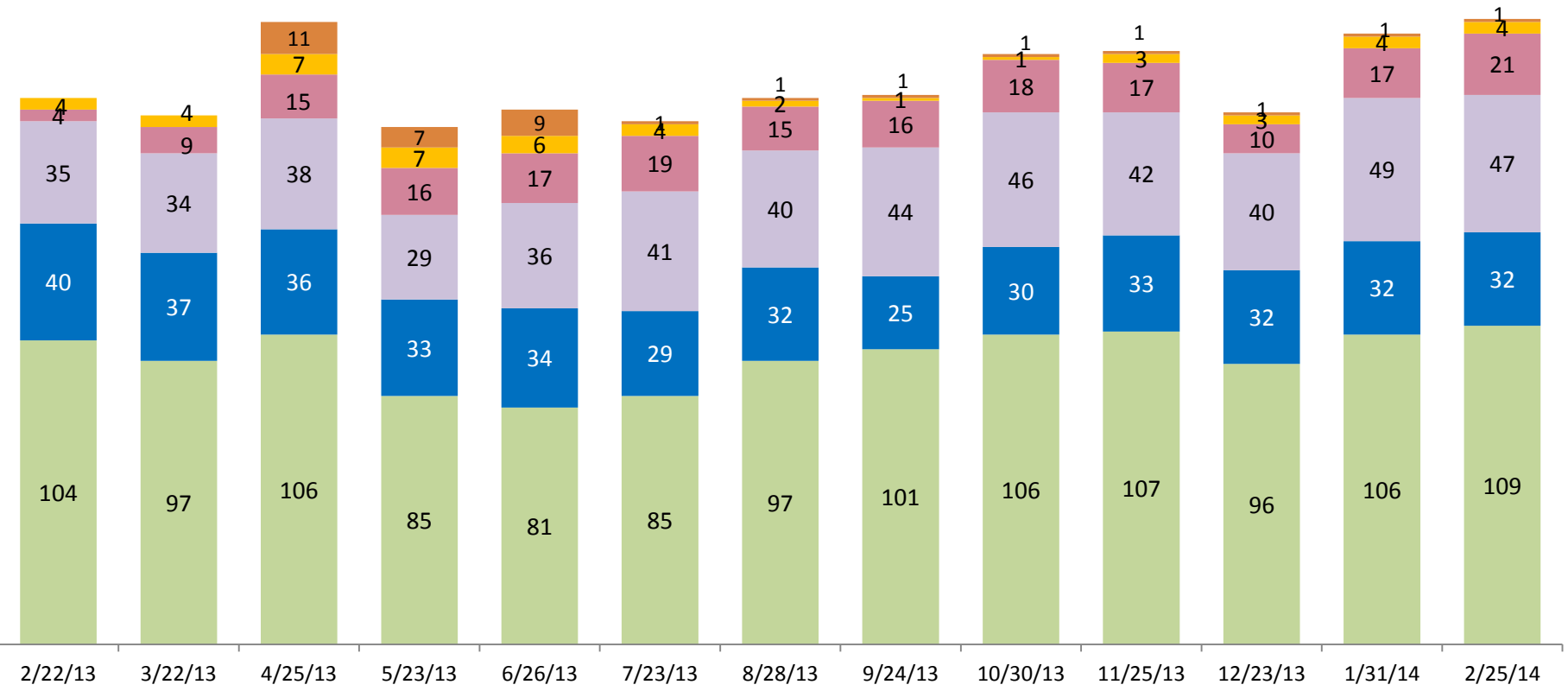
	Feb 2013	Mar 2013	Apr 2013	May 2013	Jun 2013	Jul 2013	Aug 2013	Sep 2013	Oct 2013	Nov 2013	Dec 2013	Jan 2014	Feb 2014
Number of Placements	57	40	40	21	25	21	32	27	34	29	33	34	31

Note: Percentage change is February 2013 vs. February 2014.

ACS Non-Secure Placement, in 24 hour Care

February 2013 – February 2014 (Point-in-Time)

↑14%



■ General, Male
 ■ General, Female
 ■ Specialized, Male
 ■ Specialized, Female
 ■ MTFC
 ■ Other*

	2/22/13	3/22/13	4/25/13	5/23/13	6/26/13	7/23/13	8/28/13	9/24/13	10/30/13	11/25/13	12/23/13	1/31/14	2/25/14
Number in Placement	187	181	213	177	183	179	187	188	202	203	182	209	214

*Other includes NYC youth in voluntary placements with Lincoln Hall, MercyFirst and Graham Windham.
 Note: Percentage change for the Monthly Admissions to Detention is February 2013 vs. February 2014.

Appendix

Figure 1: SCR Intakes by Borough, DEC 12 - FEB 13 and DEC 13 - FEB 14

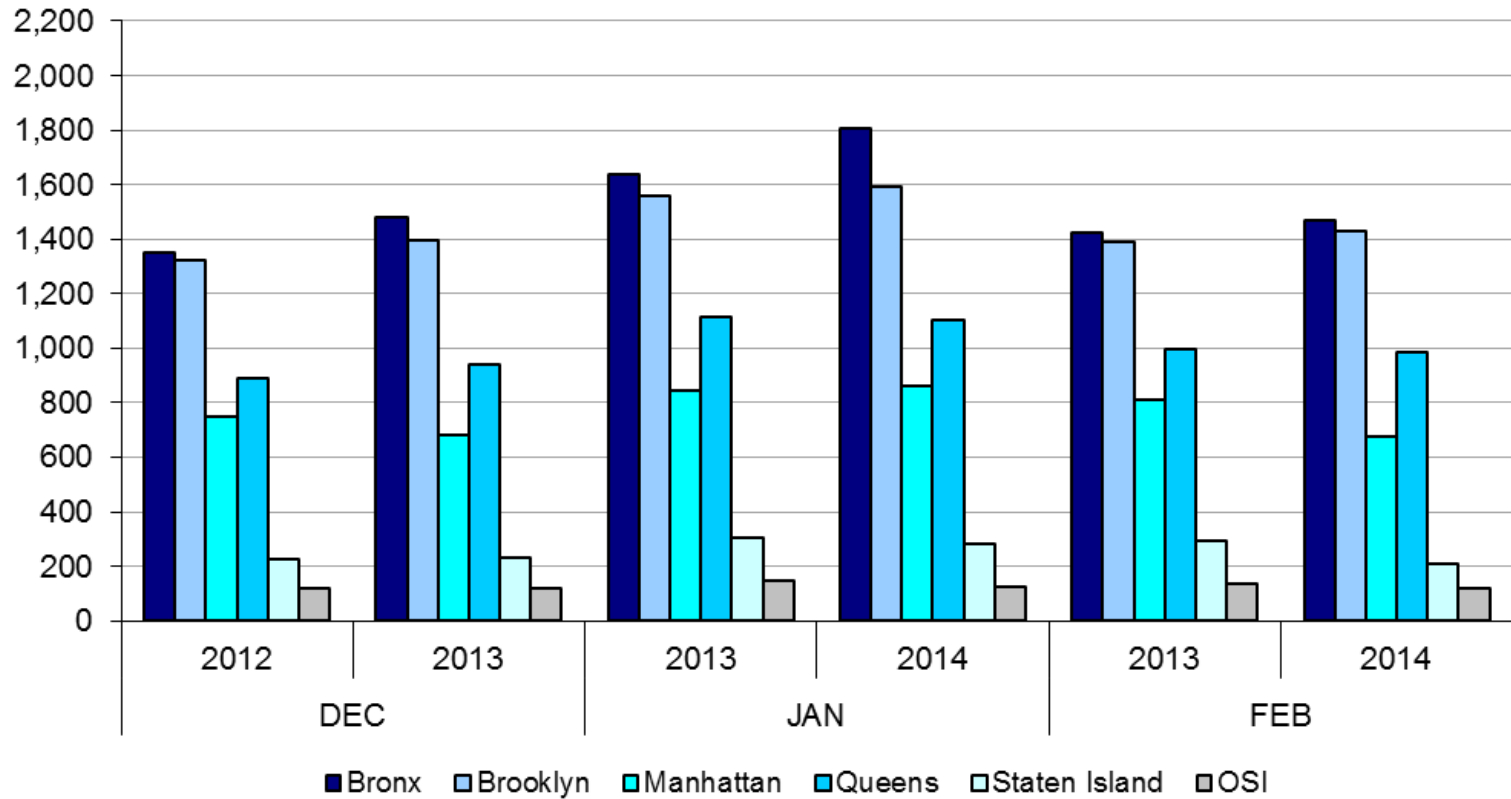


TABLE 1 - SCR Intake Changes by Borough, DEC 12 – FEB 13 and DEC 13 - FEB 14

Month	Year	Bronx	Brooklyn	Manhattan	Queens	Staten Island	OSI	Other	Total
DEC	2012	1,350	1,320	751	887	225	120	128	4,781
	2013	1,481	1,395	684	940	229	121	135	4,985
	% Change	9.7%	5.7%	-8.9%	6.0%	1.8%	0.8%	5.5%	4.3%
JAN	2013	1,636	1,559	844	1,115	305	149	149	5,757
	2014	1,806	1,594	861	1,103	281	124	154	5,923
	% Change	10.4%	2.2%	2.0%	-1.1%	-7.9%	-16.8%	3.4%	2.9%
FEB	2013	1,426	1,388	809	995	292	137	138	5,185
	2014	1,470	1,432	676	985	210	120	125	5,018
	% Change	3.1%	3.2%	-16.4%	-1.0%	-28.1%	-12.4%	-9.4%	-3.2%
Total	2012/2013	4,412	4,267	2,404	2,997	822	406	415	15,723
	2013/2014	4,757	4,421	2,221	3,028	720	365	414	15,926
	% Change	7.8%	3.6%	-7.6%	1.0%	-12.4%	-10.1%	-0.2%	1.3%

Figure 2: Citywide SCR Intakes by Reporter Group, DEC 12 – FEB 13 and DEC 13 - FEB 14

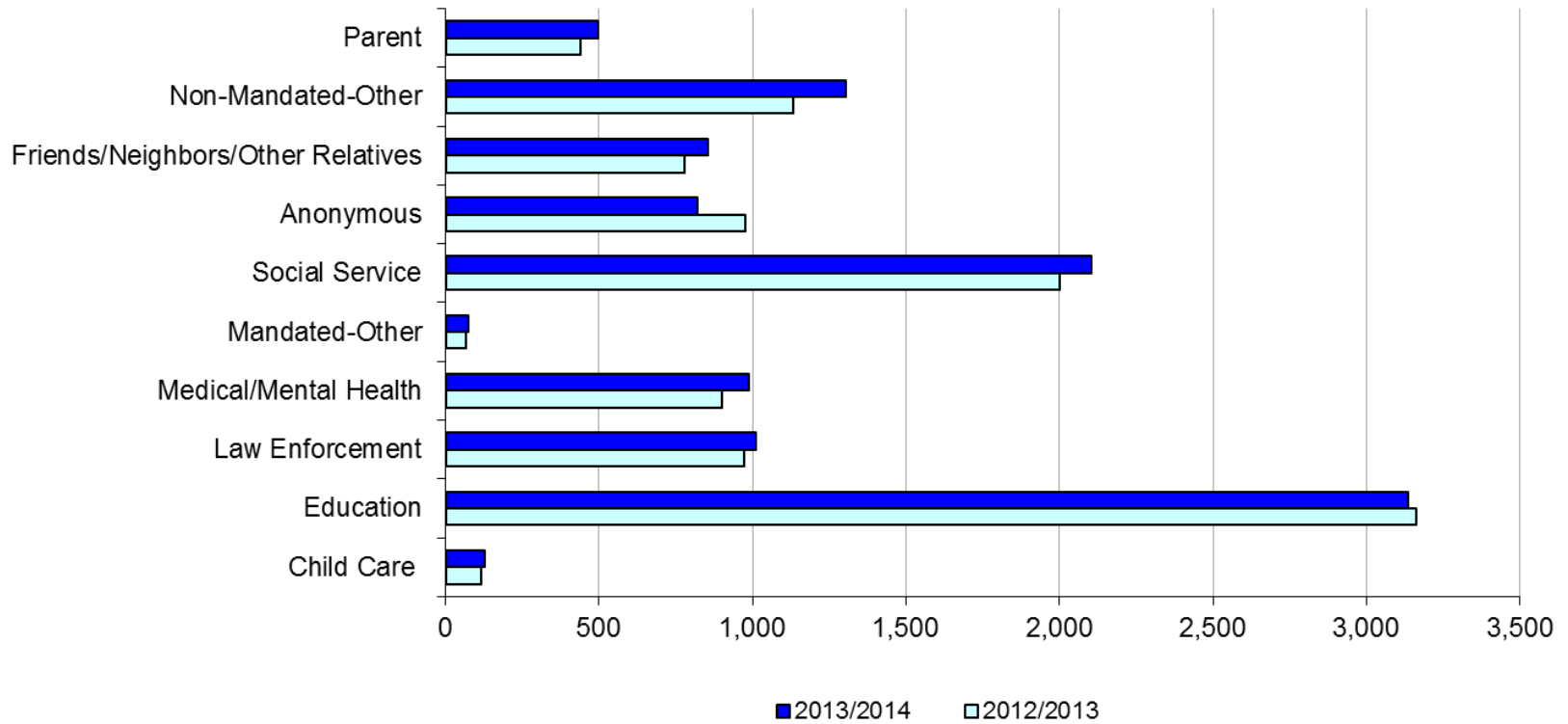
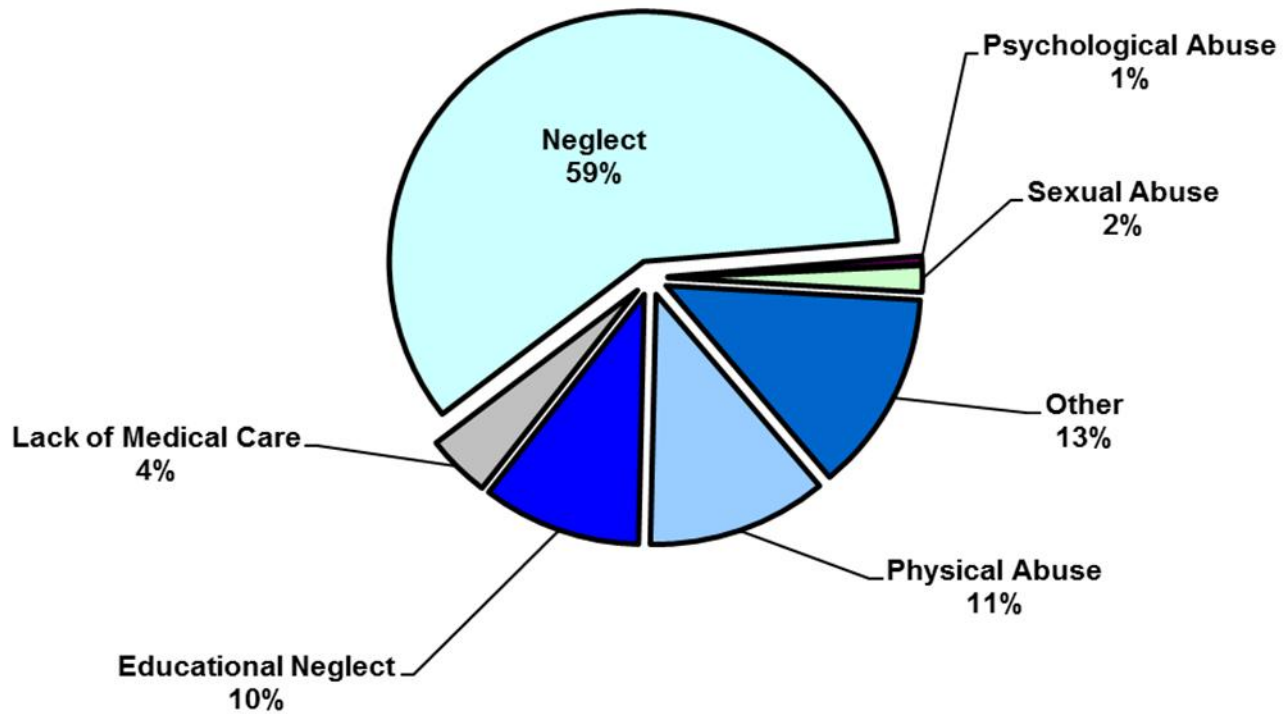


TABLE 2 - SCR Intakes by Reporter Group, DEC 12 - FEB 13 and DEC 13 - FEB 14

Year	Child Care/ Substitute Care Personnel	Educational Personnel	Law Enforcement	Medical/ Mental Health Personnel	Mandated- Other	Social Service Personnel	Anonymous	Friends/ Neighbors/ Other Relatives	Non- Mandated- Other	Parent	Foster Parent	Total
Bronx												
2012/2013	32	907	235	261	20	613	251	228	330	109	0	2,986
2013/2014	37	979	304	282	17	659	212	249	421	126	0	3,286
% Change	15.6%	7.9%	29.4%	8.0%	-15.0%	7.5%	-15.5%	9.2%	27.6%	15.6%	--	10.0%
Brooklyn												
2012/2013	22	894	260	240	12	517	297	225	305	107	1	2,880
2013/2014	33	911	228	248	20	544	271	257	353	125	0	2,990
% Change	50.0%	1.9%	-12.3%	3.3%	66.7%	5.2%	-8.8%	14.2%	15.7%	16.8%	--	3.8%
Manhattan												
2012/2013	30	391	182	144	15	331	138	109	194	53	3	1,590
2013/2014	20	320	181	169	8	325	115	122	208	77	0	1,545
% Change	-33.3%	-18.2%	-0.5%	17.4%	-46.7%	-1.8%	-16.7%	11.9%	7.2%	45.3%	-100.0%	-2.8%
Queens												
2012/2013	18	703	202	149	12	337	179	147	171	83	1	2,002
2013/2014	16	697	188	181	18	368	138	150	202	84	1	2,043
% Change	-11.1%	-0.9%	-6.9%	21.5%	50.0%	9.2%	-22.9%	2.0%	18.1%	1.2%	0.0%	2.0%
Staten Island												
2012/2013	5	204	33	48	1	70	69	40	34	26	0	530
2013/2014	1	182	43	51	3	72	52	46	37	23	0	510
% Change	-80.0%	-10.8%	30.3%	6.3%	200.0%	2.9%	-24.6%	15.0%	8.8%	-11.5%	--	-3.8%
OSI												
2012/2013	7	29	6	28	5	53	25	12	67	37	0	269
2013/2014	15	27	12	15	4	54	18	8	56	35	1	245
% Change	114.3%	-6.9%	100.0%	-46.4%	-20.0%	1.9%	-28.0%	-33.3%	-16.4%	-5.4%	--	-8.9%
Other												
2012/2013	2	34	53	31	0	80	17	17	31	24	0	289
2013/2014	4	21	54	41	2	81	15	21	28	28	0	295
% Change	100.0%	-38.2%	1.9%	32.3%	#DIV/0!	1.3%	-11.8%	23.5%	-9.7%	16.7%	--	2.1%
Citywide												
2012/2013	116	3,162	971	901	65	2,001	976	778	1,132	439	5	10,546
2013/2014	126	3,137	1,010	987	72	2,103	821	853	1,305	498	2	10,914
% Change	8.6%	-0.8%	4.0%	9.5%	10.8%	5.1%	-15.9%	9.6%	15.3%	13.4%	-60.0%	3.5%

Figure 3: SCR Allegations, DEC 13 – FEB 14



Total Allegations = 26,983

TABLE 3 - SCR Allegations, DEC 12 - FEB 13 and DEC 13 - FEB 14

Year	Physical Abuse	Educational Neglect	Lack of Medical Care	Neglect	Psychological Abuse	Sexual Abuse	Other	Total
Bronx								
2012/2013	889	921	335	4,595	41	162	1,031	7,974
2013/2014	815	991	362	4,781	36	133	1,078	8,196
% Change	-8.3%	7.6%	8.1%	4.0%	-12.2%	-17.9%	4.6%	2.8%
Brooklyn								
2012/2013	908	743	284	4,408	48	162	1,053	7,606
2013/2014	907	813	284	4,606	57	124	976	7,767
% Change	-0.1%	9.4%	0.0%	4.5%	18.8%	-23.5%	-7.3%	2.1%
Manhattan								
2012/2013	378	351	122	2,018	20	46	456	3,391
2013/2014	340	287	118	1,840	12	53	414	3,064
% Change	-10.1%	-18.2%	-3.3%	-8.8%	-40.0%	15.2%	-9.2%	-9.6%
Queens								
2012/2013	714	439	165	2,931	34	99	653	5,035
2013/2014	682	359	198	2,875	22	77	589	4,802
% Change	-4.5%	-18.2%	20.0%	-1.9%	-35.3%	-22.2%	-9.8%	-4.6%
Staten Island								
2012/2013	169	165	60	835	11	20	196	1,456
2013/2014	133	150	39	794	11	30	217	1,374
% Change	-21.3%	-9.1%	-35.0%	-4.9%	0.0%	50.0%	10.7%	-5.6%
OSI								
2012/2013	174	47	45	866	4	42	176	1,354
2013/2014	162	28	52	621	1	21	93	978
% Change	-6.9%	-40.4%	15.6%	-28.3%	-75.0%	-50.0%	-47.2%	-27.8%
Other								
2012/2013	69	71	31	440	6	23	150	790
2013/2014	56	99	47	441	4	22	133	802
% Change	-18.8%	39.4%	51.6%	0.2%	-33.3%	-4.3%	-11.3%	1.5%
Citywide								
2012/2013	3,301	2,737	1,042	16,093	164	554	3,715	27,606
2013/2014	3,095	2,727	1,100	15,958	143	460	3,500	26,983
% Change	-6.2%	-0.4%	5.6%	-0.8%	-12.8%	-17.0%	-5.8%	-2.3%

TABLE 4 - Purchased Preventive Cases Opened and Closed
January 2012 to February 2014

Month	Opened Cases	Closed Cases
2012		
Jan-12	870	629
Feb-12	889	835
Mar-12	944	991
Apr-12	997	870
May-12	1,117	979
Jun-12	965	869
Jul-12	853	979
Aug-12	917	1,007
Sep-12	727	900
Oct-12	875	915
Nov-12	738	702
Dec-12	938	871
2013		
Jan-13	960	884
Feb-13	873	916
Mar-13	962	1,171
Apr-13	940	988
May-13	864	1,337
Jun-13	863	780
Jul-13	868	1,004
Aug-13	802	1,084
Sep-13	844	724
Oct-13	933	765
Nov-13	901	685
Dec-13	1,106	552
2014		
Jan-14	983	640
Feb-14	987	679

**Table 5 - Referrals to Purchased Preventive Services by Source
January 2012 to February 2014**

Month	Total Referrals	Division of Child Protection	Foster Care Agencies	PPRS Transfer	School	Self	Other Sources*
2012							
Jan-12	1,431	66.5%	0.7%	8.5%	3.6%	3.8%	17.0%
Feb-12	1,043	78.2%	1.1%	9.0%	1.9%	6.7%	3.1%
Mar-12	1,525	73.6%	0.9%	6.0%	1.8%	3.9%	13.8%
Apr-12	1,370	72.8%	1.0%	9.4%	1.2%	4.2%	11.4%
May-12	1,463	70.9%	1.0%	7.6%	1.1%	4.4%	15.0%
Jun-12	1,279	73.8%	0.5%	5.9%	1.0%	4.7%	14.2%
Jul-12	1,308	77.4%	1.2%	7.0%	0.3%	3.7%	10.5%
Aug-12	1,391	74.0%	0.9%	11.7%	0.3%	2.9%	10.2%
Sep-12	1,110	70.5%	1.9%	9.6%	1.2%	5.0%	11.9%
Oct-12	1,159	61.1%	1.4%	12.6%	2.7%	4.9%	17.3%
Nov-12	1,106	67.0%	1.0%	9.9%	2.2%	4.7%	15.3%
Dec-12	1,206	68.7%	0.8%	5.8%	2.7%	5.6%	16.4%
CY 2012	15,391	71.3%	1.0%	8.5%	1.6%	4.5%	13.1%
2013							
Jan-13	1,474	74.1%	1.2%	7.3%	1.2%	3.7%	12.5%
Feb-13	1,308	75.8%	1.1%	8.0%	1.6%	2.9%	10.6%
Mar-13	1,270	73.5%	1.2%	6.7%	2.4%	3.9%	12.3%
Apr-13	1,421	77.9%	0.8%	7.4%	0.9%	3.0%	10.1%
May-13	1,320	68.4%	0.5%	10.2%	1.5%	3.8%	15.5%
Jun-13	953	69.2%	1.2%	9.4%	2.6%	5.0%	12.6%
Jul-13	1,014	66.3%	1.9%	14.4%	1.6%	3.9%	11.9%
Aug-13	1,212	70.5%	0.7%	11.8%	0.7%	4.7%	11.6%
Sep-13	1,262	64.0%	2.1%	11.3%	1.7%	6.7%	14.2%
Oct-13	1,319	61.0%	1.1%	9.0%	2.9%	7.5%	18.5%
Nov-13	1,249	55.9%	1.6%	10.5%	4.6%	9.2%	18.3%
Dec-13	1,464	62.2%	1.2%	8.2%	2.3%	9.2%	17.0%
2014							
Jan-14	1,537	70.0%	1.2%	6.6%	2.3%	5.8%	14.2%
Feb-14	1,334	69.7%	0.8%	8.4%	1.7%	5.5%	13.9%

*Other Community Sources includes the Department of Homeless Services, Family Court, FAP, Hospitals and Medical facilities, the NYC Housing Authority, PINS/DAS, Probation, and Sponsor Agencies.