

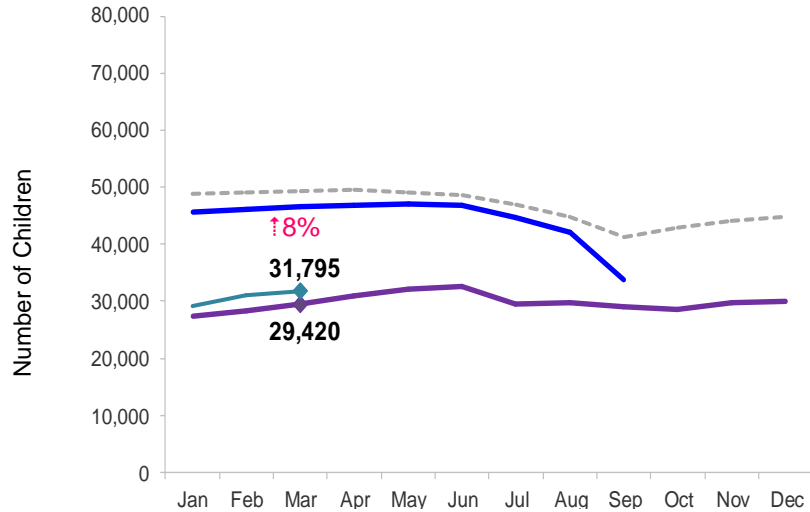


Flash

April 2014

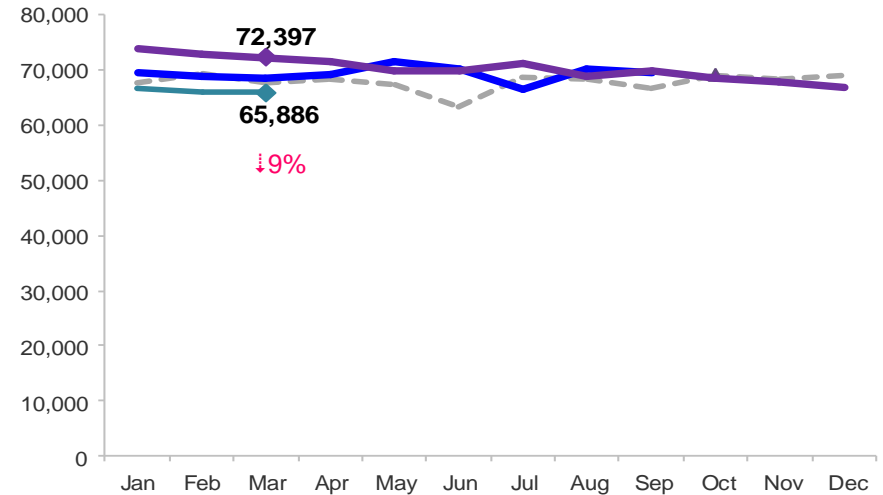
Children Enrolled in Contracted Early Learn Programs

January 2011 – March 2014 (End of Month)



Children Using Vouchers for Child Care

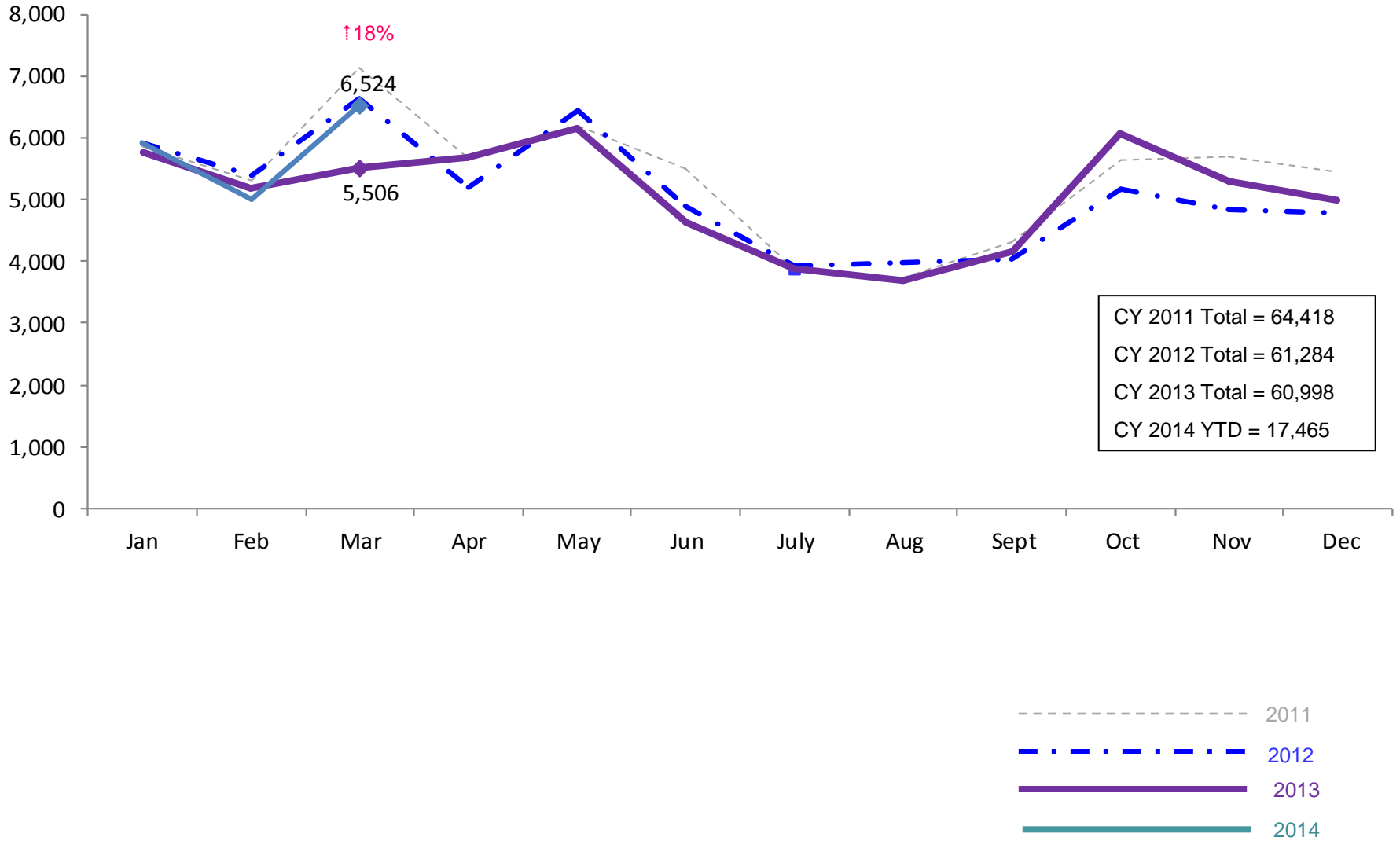
January 2011 – March 2014 (End of Month)



Notes: 1) Beginning October 1, 2012 ACS converted its early care and education system to a new model, Early Learn NYC. Enrollment data for the transitional months of October – December 2012 are not available because contractors were in the midst of implementing the data collection systems. 2) Percentage change is March 2013 vs. March 2014.

SCR Intakes

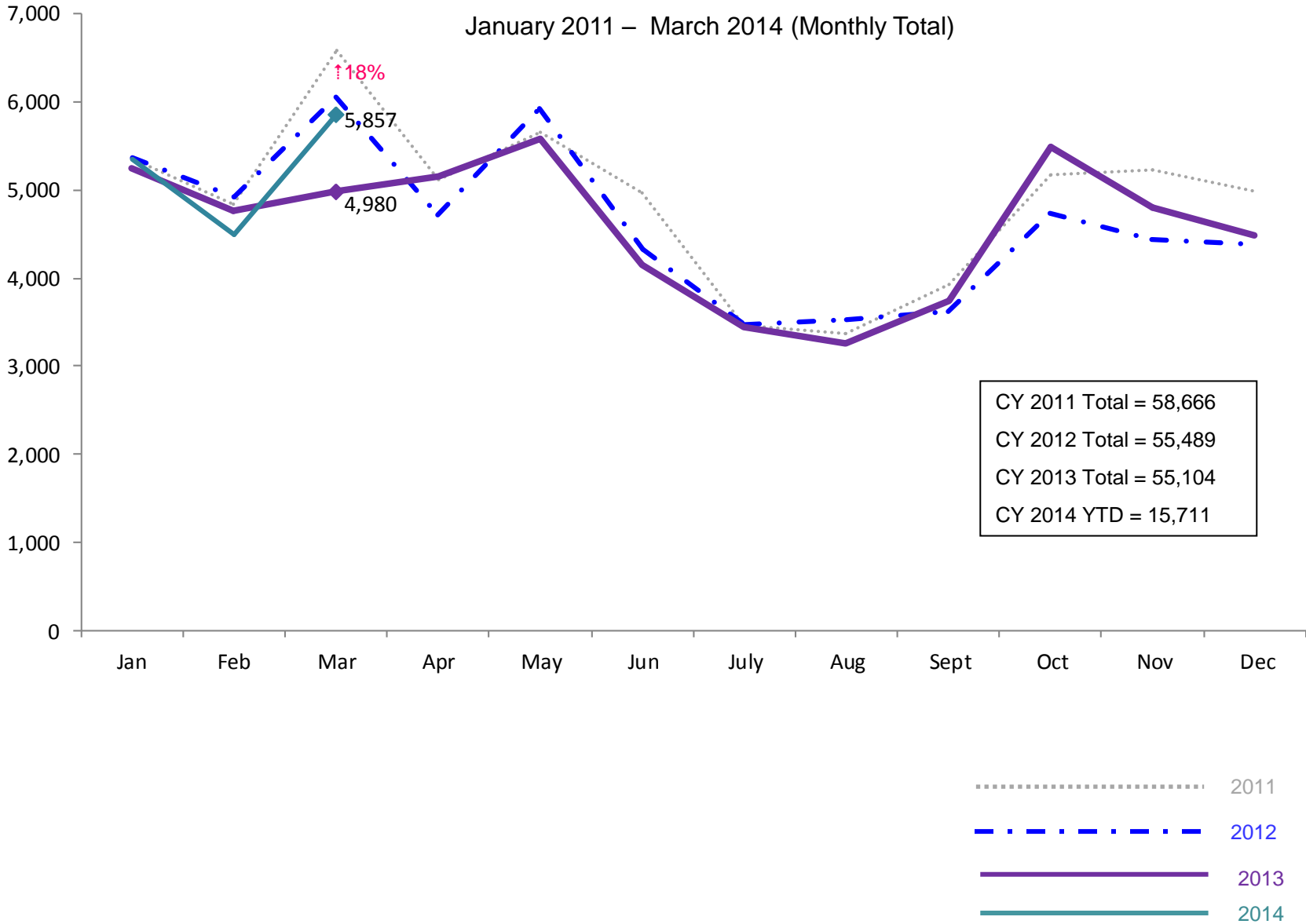
January 2011 – March 2014 (Monthly Total)



Note: Percentage change is March 2013 vs. March 2014.
 See Pages 29 through 34 of the Appendix for supporting data.

SCR Consolidated Investigations

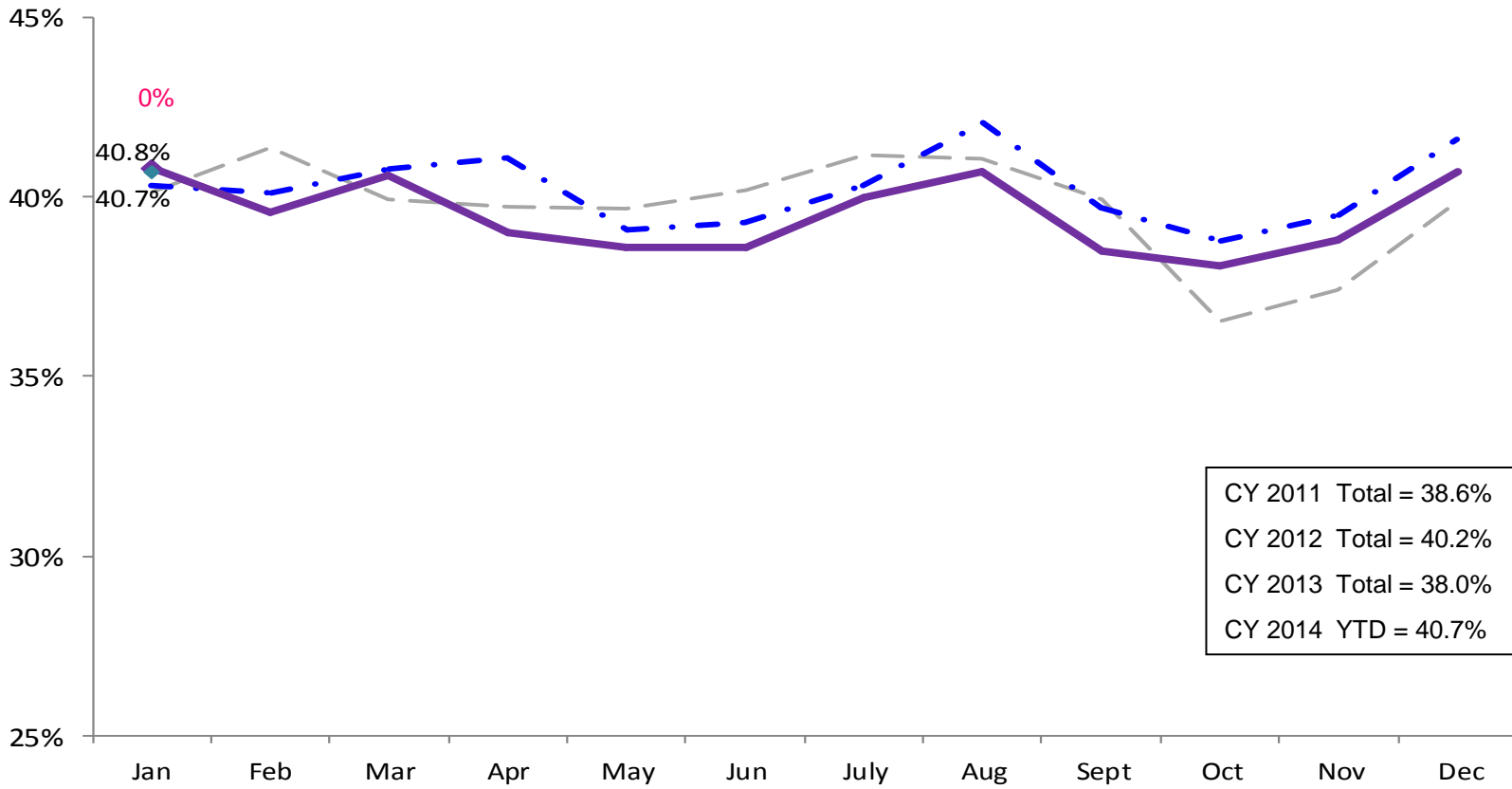
January 2011 – March 2014 (Monthly Total)



Note: Percentage change is March 2013 vs. March 2014.

SCR Investigation Indication Rate

January 2011 – January 2014



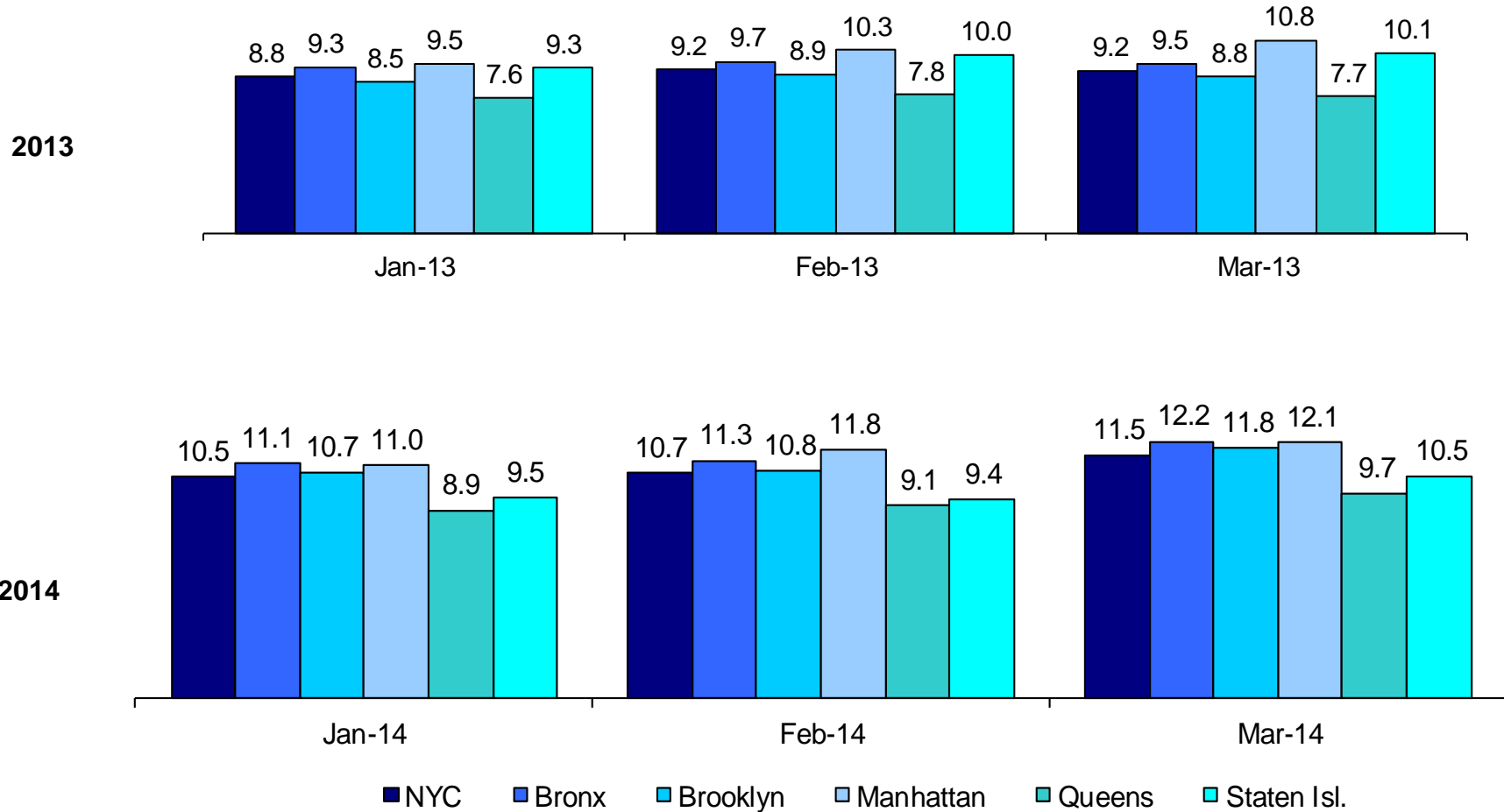
CY 2011 Total = 38.6%
 CY 2012 Total = 40.2%
 CY 2013 Total = 38.0%
 CY 2014 YTD = 40.7%

----- 2011
 -.-.-.- 2012
 _____ 2013
 _____ 2014

Note: Percentage change is January 2013 vs. January 2014.

Average P/D Combined Caseload*

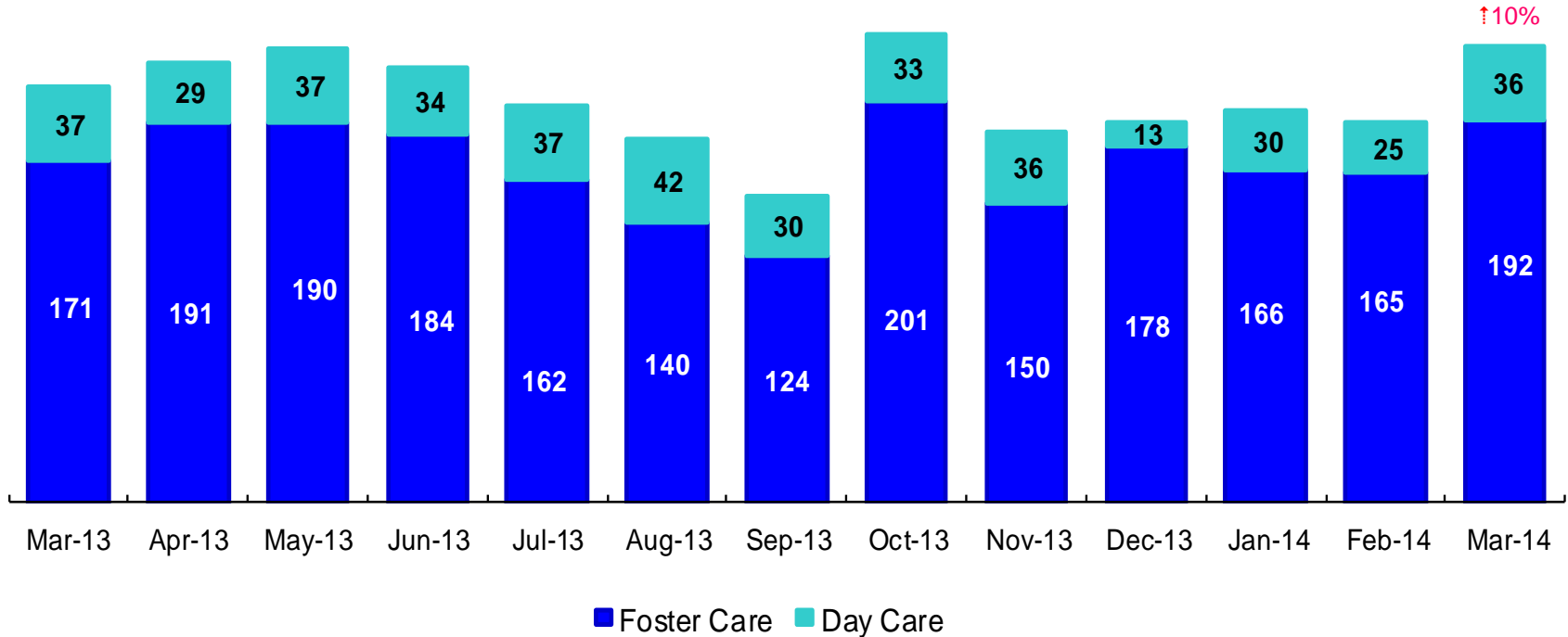
January 2013 – March 2013 & January 2014 – March 2014



* Caseloads are of protective/diagnostic caseworkers only and exclude the caseloads carried by Level I and Level II Supervisors. 6

OSI Investigations by Program

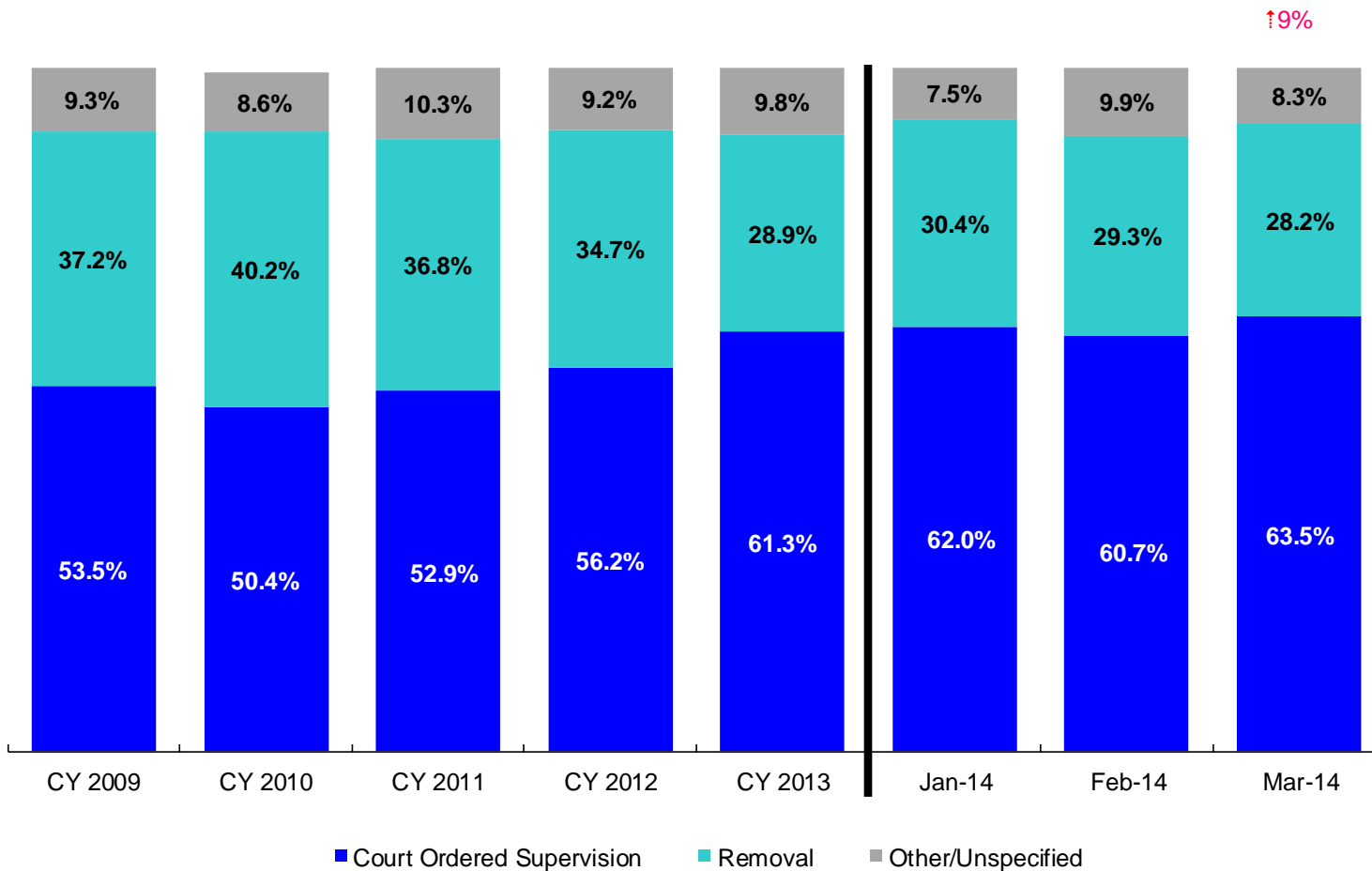
March 2013– March 2014



| | Mar 2013 | Apr 2013 | May 2013 | Jun 2013 | Jul 2013 | Aug 2013 | Sep 2013 | Oct 2013 | Nov 2013 | Dec 2013 | Jan 2014 | Feb 2014 | Mar 2014 |
|--------------------------|----------|----------|----------|----------|----------|----------|----------|----------|----------|----------|----------|----------|----------|
| Number of Investigations | 208 | 220 | 227 | 218 | 199 | 182 | 154 | 234 | 186 | 191 | 196 | 190 | 228 |

Note: Percentage change is March 2013 vs. March 2014.

Article 10 Total Filings & Filing Outcomes, CY 2009 - CY 2013 and January - March 2014

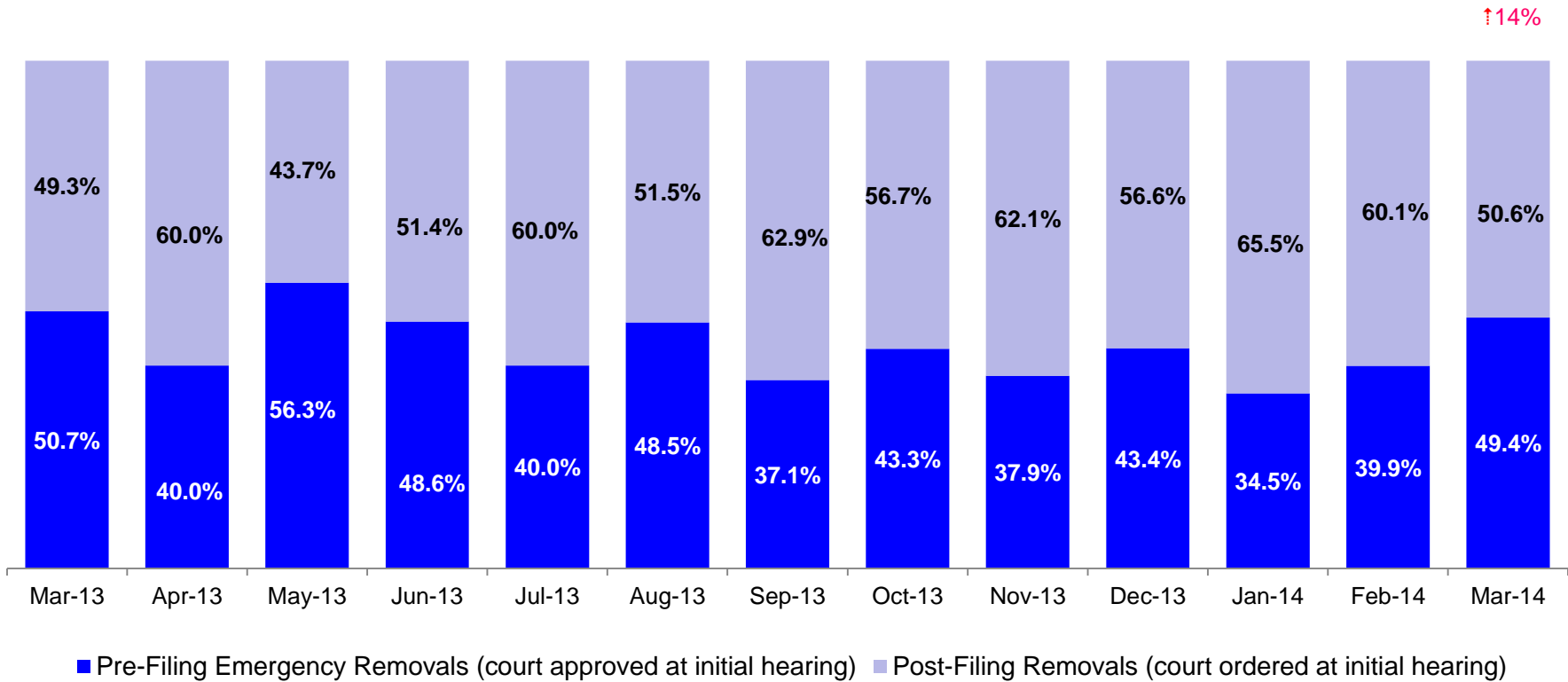


↑9%

| | CY 2009 | CY 2010 | CY 2011 | CY 2012 | CY 2013 | Jan 2014 | Feb 2014 | Mar 2014 |
|----------------|---------|---------|---------|---------|---------|----------|----------|----------|
| Art.10 Filings | 11,568 | 10,093 | 9,596 | 8,913 | 9,318 | 743 | 828 | 905 |

Notes: 1) The category “Other/Unspecified” includes released with no supervision; no order issued and no outcome specified. Outcomes of cases heard the next day are not yet captured in this report. 2) Percentage change is March 2013 vs. March 2014.

Article 10 Filing Removals, March 2013 – March 2014



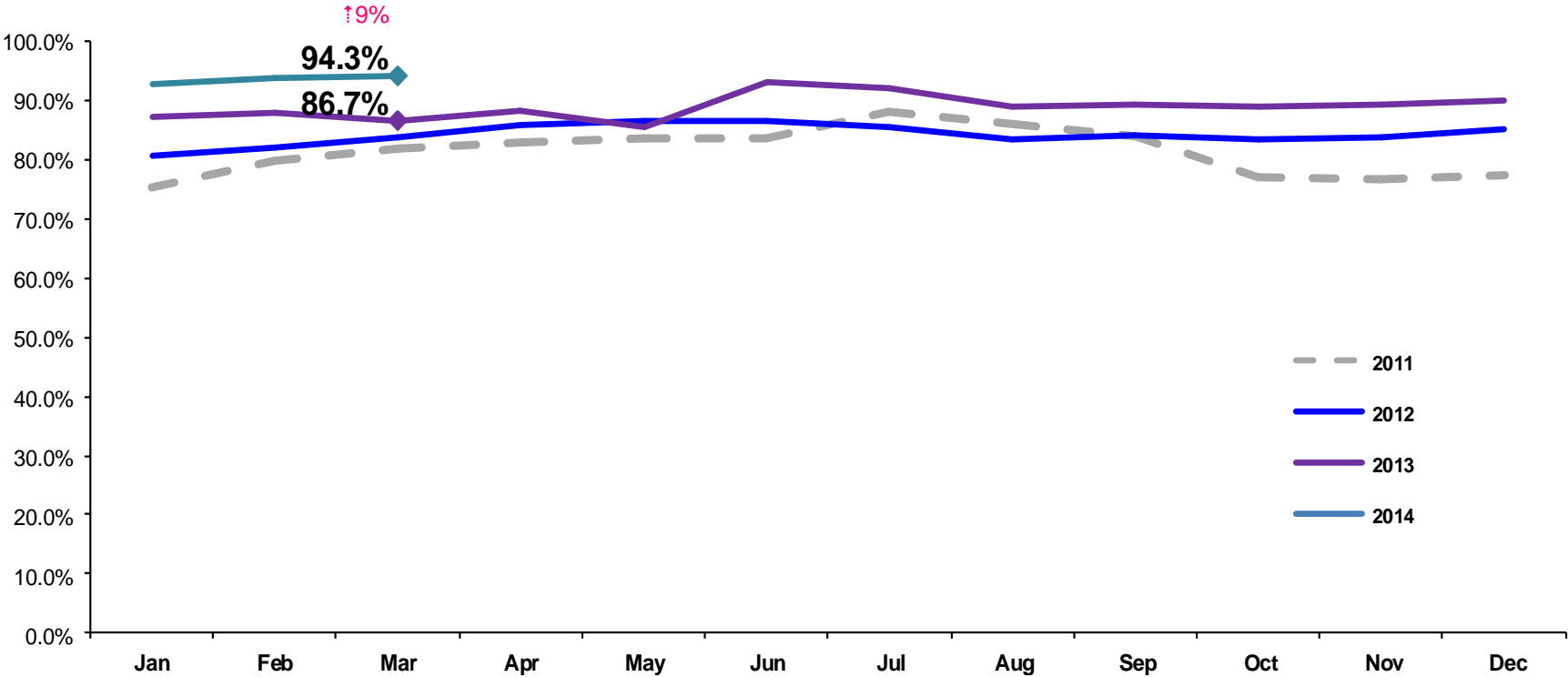
| | Mar 2013 | Apr 2013 | May 2013 | Jun 2013 | Jul 2013 | Aug 2013 | Sep 2013 | Oct 2013 | Nov 2013 | Dec 2013 | Jan 2014 | Feb 2014 | Mar 2014 |
|--------------------|----------|----------|----------|----------|----------|----------|----------|----------|----------|----------|----------|----------|----------|
| Number of Removals | 223 | 200 | 247 | 220 | 220 | 200 | 229 | 261 | 224 | 212 | 226 | 243 | 255 |

Note: Percentage change is March 2013 vs. March 2014.

PPRS Utilization Rate

January 2011 – March 2014 (End of Month)

General Preventive



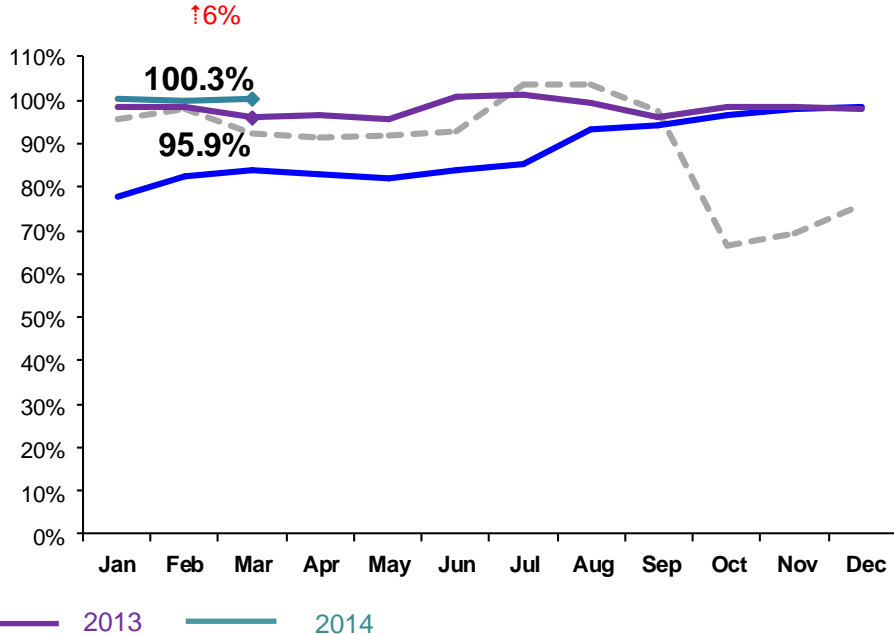
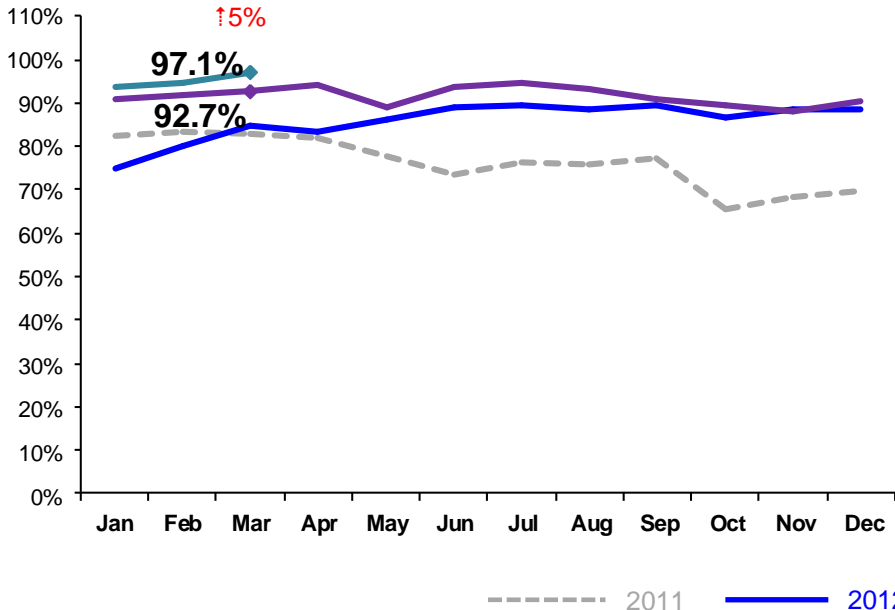
Notes: 1) Beacons programs are included in the GP utilization rates. 2) During February - June 2011 GP rates were adjusted by excluding programs in the process of being closed. GP rates were also adjusted during July – September 2011 by excluding newly opened programs. 3) During June-October 2013 GP programs in the process of converting to EBMs were excluded from the GP utilization statistics.) Percentage change is March 2013 vs. March 2014.

PPRS Utilization Rate

January 2011 – March 2014 (End of Month)

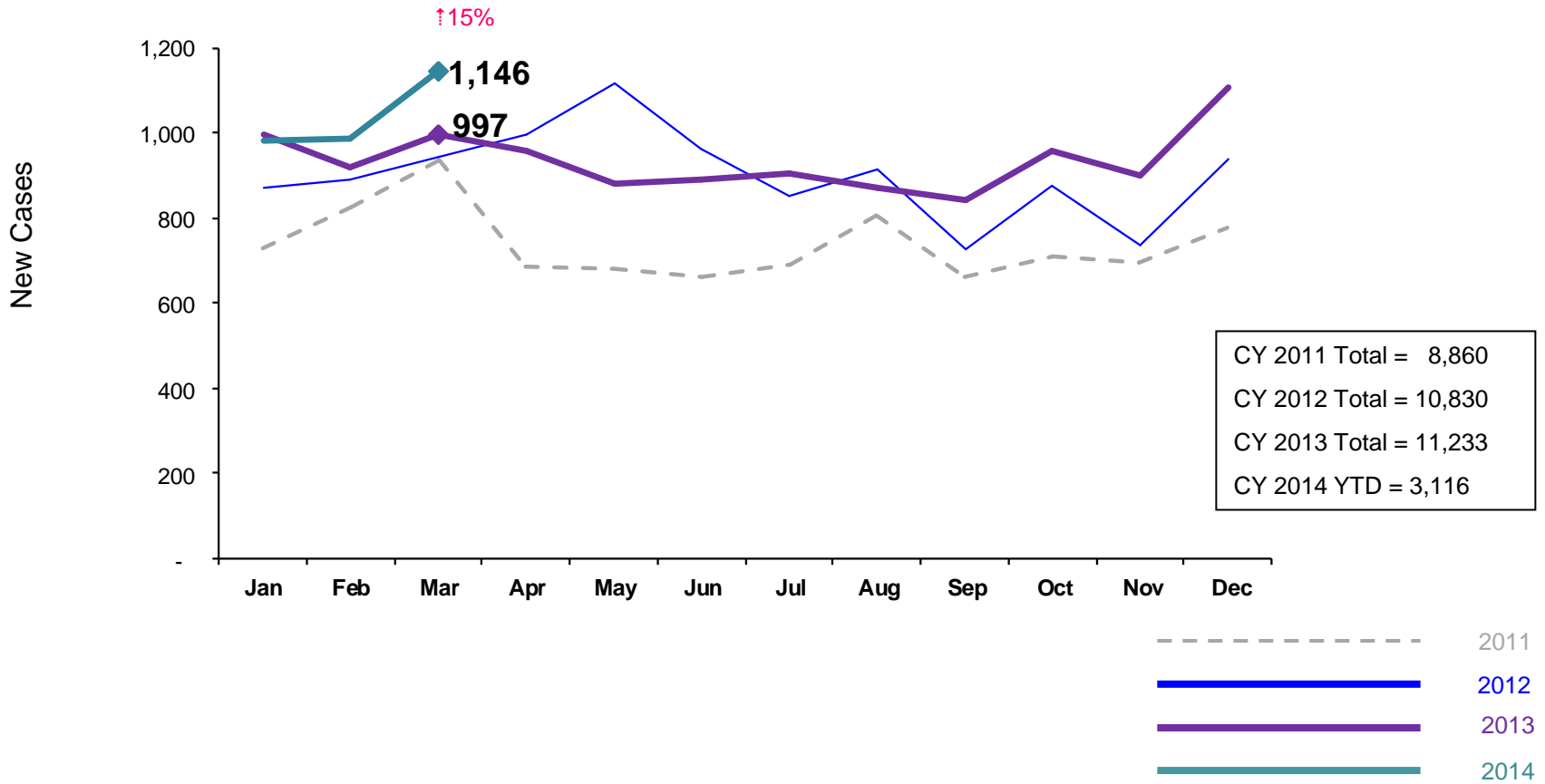
Family Rehabilitation Program/Family Treatment Rehabilitation

Medically Fragile



Notes: 1) During February - June 2011 FRP rates were adjusted by excluding programs in the process of being closed. FT/R rates were also adjusted during July – September 2011 by excluding newly opened programs. As of October 2011 all FT/R programs are included in the FT/R utilization rates. 2) Beginning July 2011 Family Treatment Rehabilitation programs replaced the Family Rehabilitation programs. 3) Beginning December 2011 the NYF Family Services for deaf Children and Adults program is no longer included in the medically fragile utilization rate. 4) During June -October 2013 FTR programs in the process of converting to EBMs were excluded from the FTR utilization statistics. 5) Percentage change is March 2013 vs. March 2014.

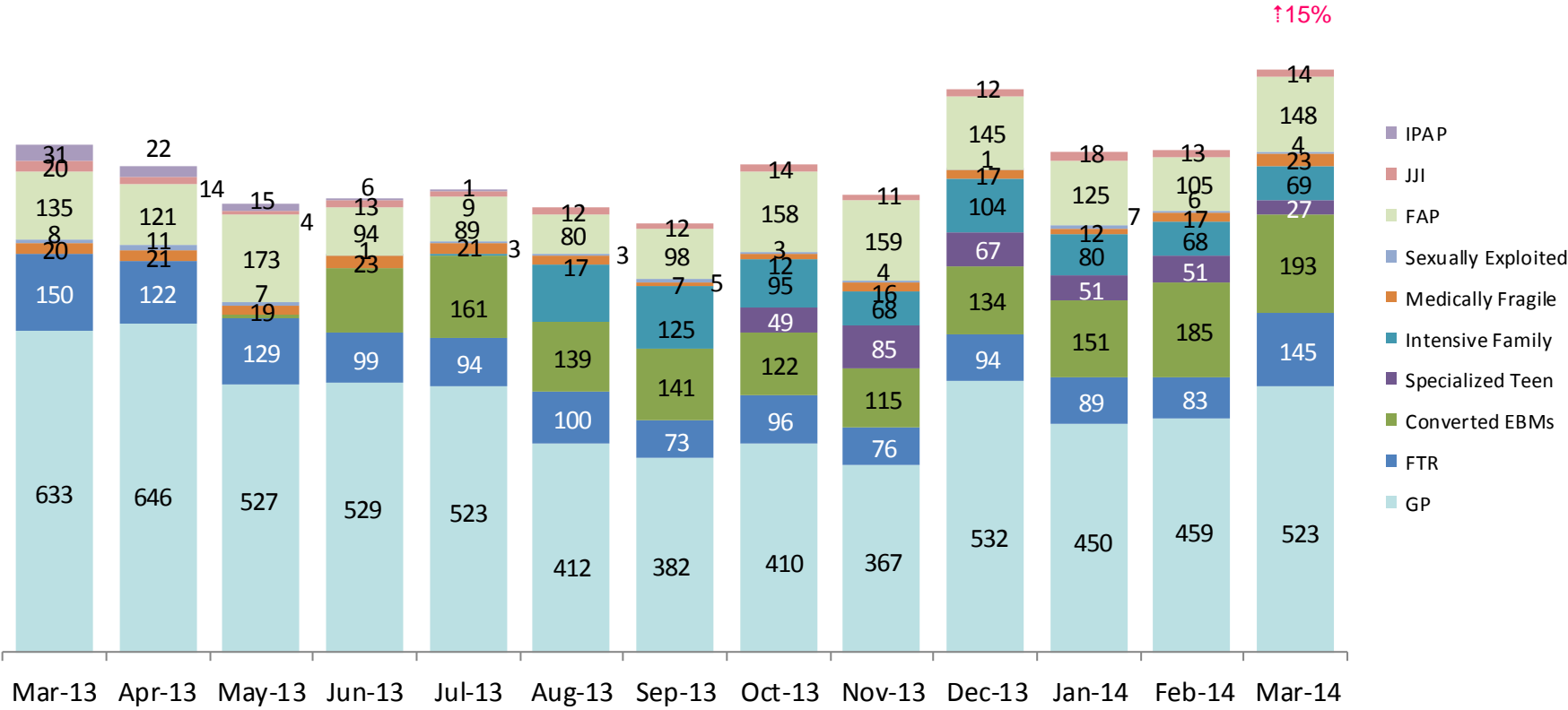
New Preventive Cases*
January 2011 – March 2014



*Notes: 1) New preventive cases do not include cases transferred from one preventive program to another. 2) Percentage change is March 2013 vs. March 2014. 3) See Pages 35 and 36 of the Appendix for supporting data.

New Preventive Cases* by Program Type

March 2013 – March 2014



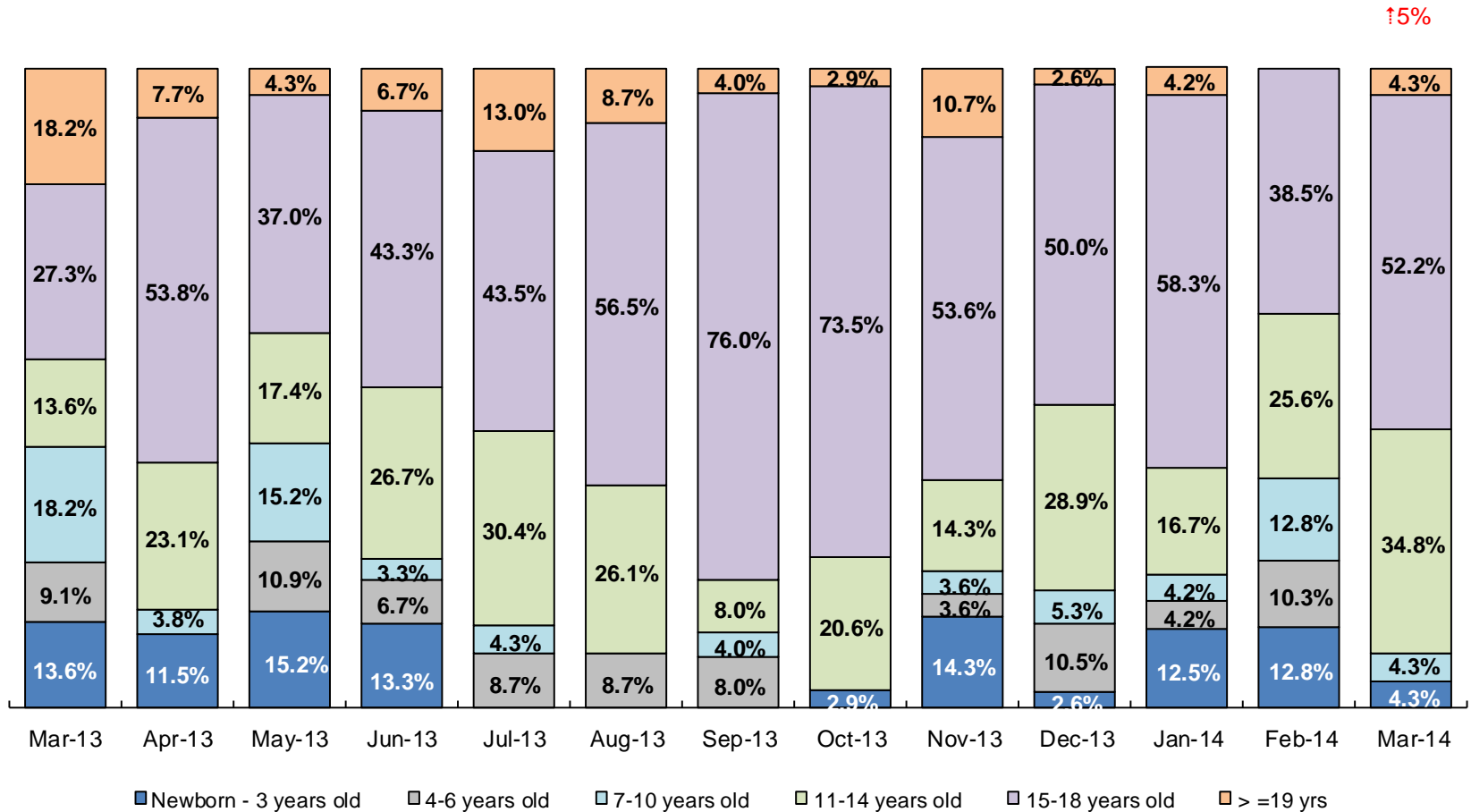
↑15%

| | Mar 2013 | Apr 2013 | May 2013 | Jun 2013 | Jul 2013 | Aug 2013 | Sep 2013 | Oct 2013 | Nov 2013 | Dec 2013 | Jan 2014 | Feb 2014 | Mar 2014 |
|--------------------------------|----------|----------|----------|----------|----------|----------|----------|----------|----------|----------|----------|----------|----------|
| Number of New Preventive Cases | 997 | 957 | 881 | 893 | 907 | 874 | 843 | 959 | 901 | 1,106 | 983 | 987 | 1,146 |

Notes: 1) New preventive cases do not include cases transferred from one preventive program to another. 2) Percentage change is March 2013 vs. March 2014.

Children's Center Population by Age

March 2013 – March 2014



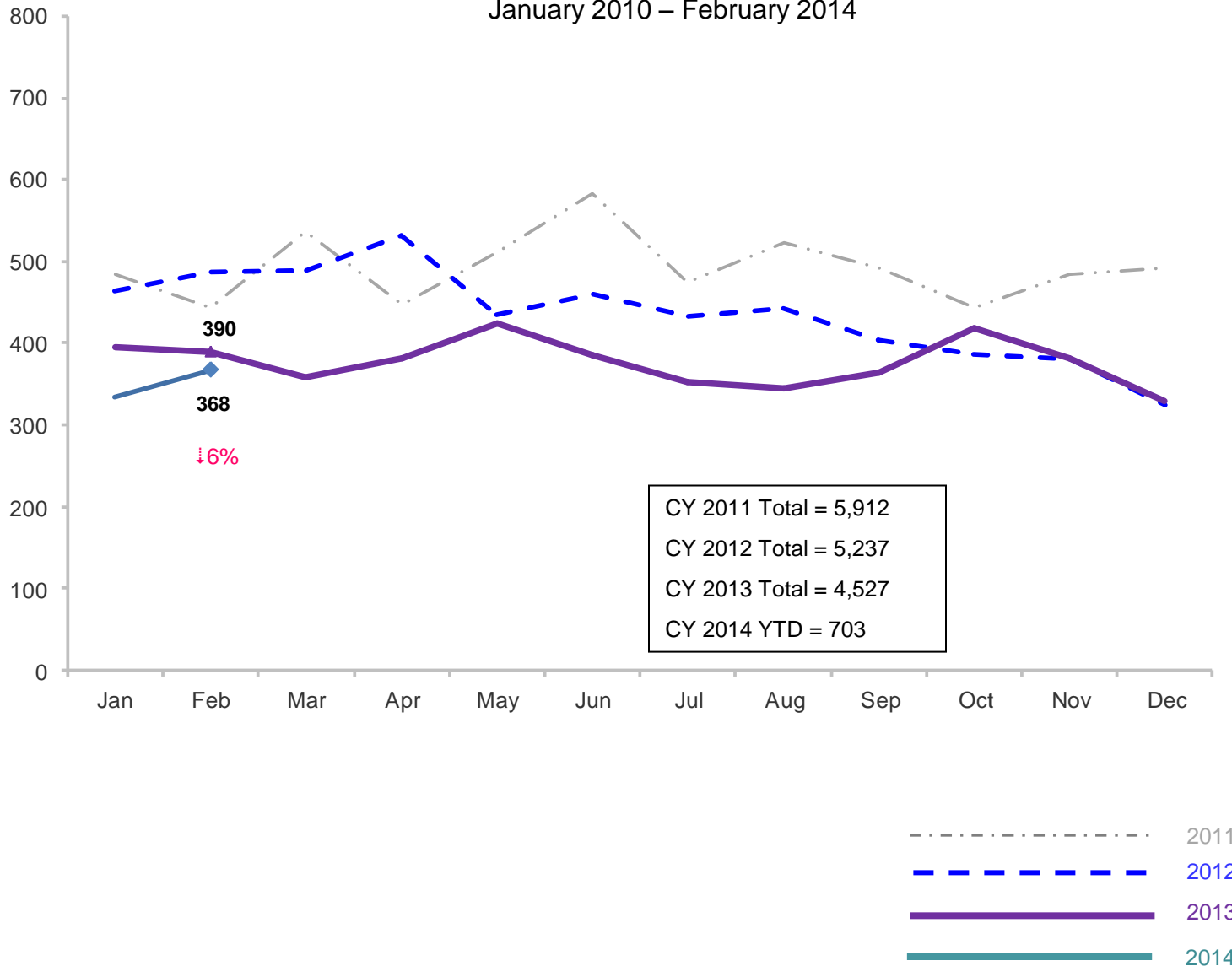
| | Mar 2013 | Apr 2013 | May 2013 | Jun 2013 | Jul 2013 | Aug 2013 | Sep 2013 | Oct 2013 | Nov 2013 | Dec 2013 | Jan 2014 | Feb 2014 | Mar 2014 |
|--------------------|----------|----------|----------|----------|----------|----------|----------|----------|----------|----------|----------|----------|----------|
| Number of Children | 22 | 26 | 46 | 30 | 23 | 23 | 25 | 34 | 28 | 38 | 24 | 39 | 23 |

↑15%

Note: Percentage change is March 2013 vs. March 2014.

Total Monthly Placements

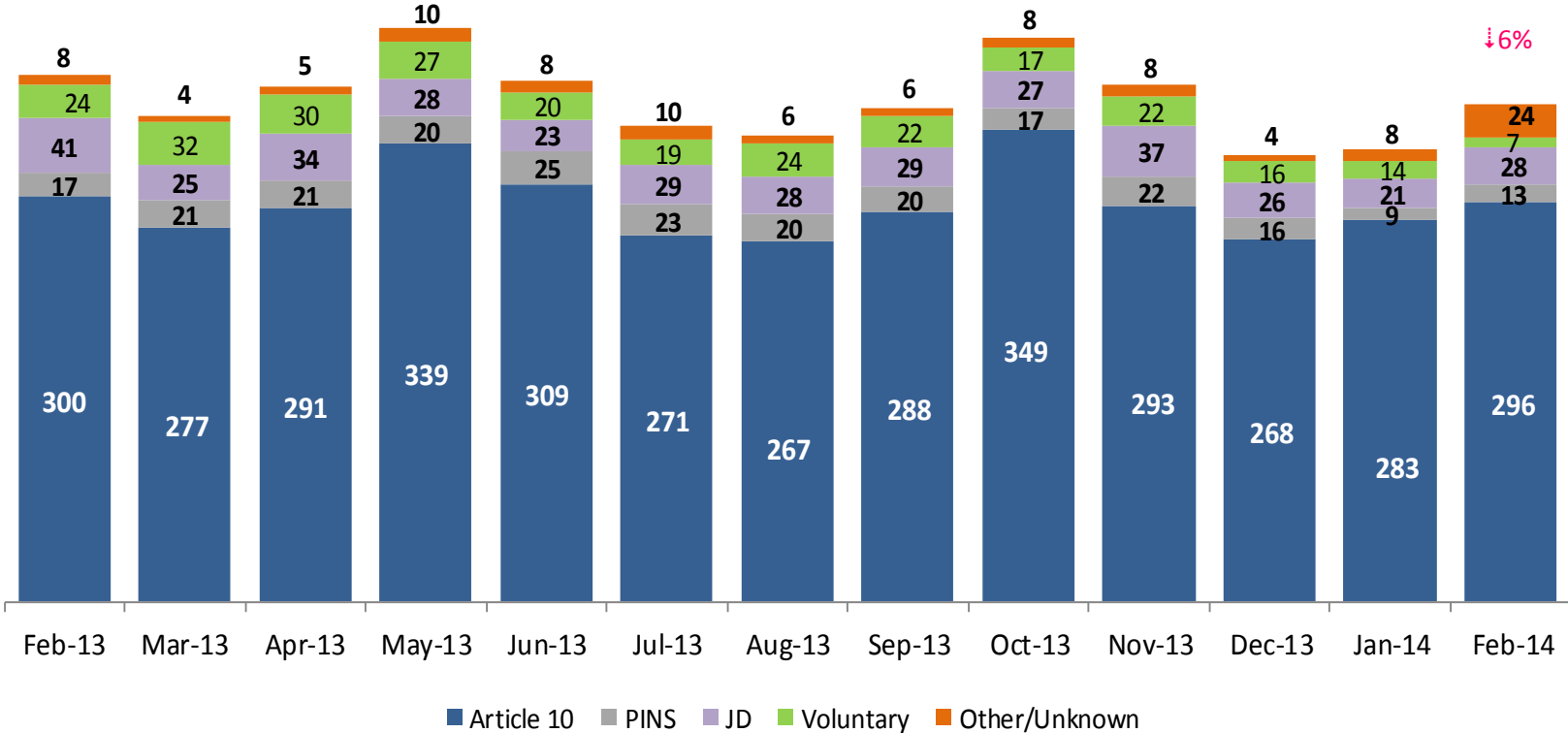
January 2010 – February 2014



Note: Percentage change is February 2013 vs. February 2014.

Reason for Initial Placements into Foster Care

February 2013 – February 2014

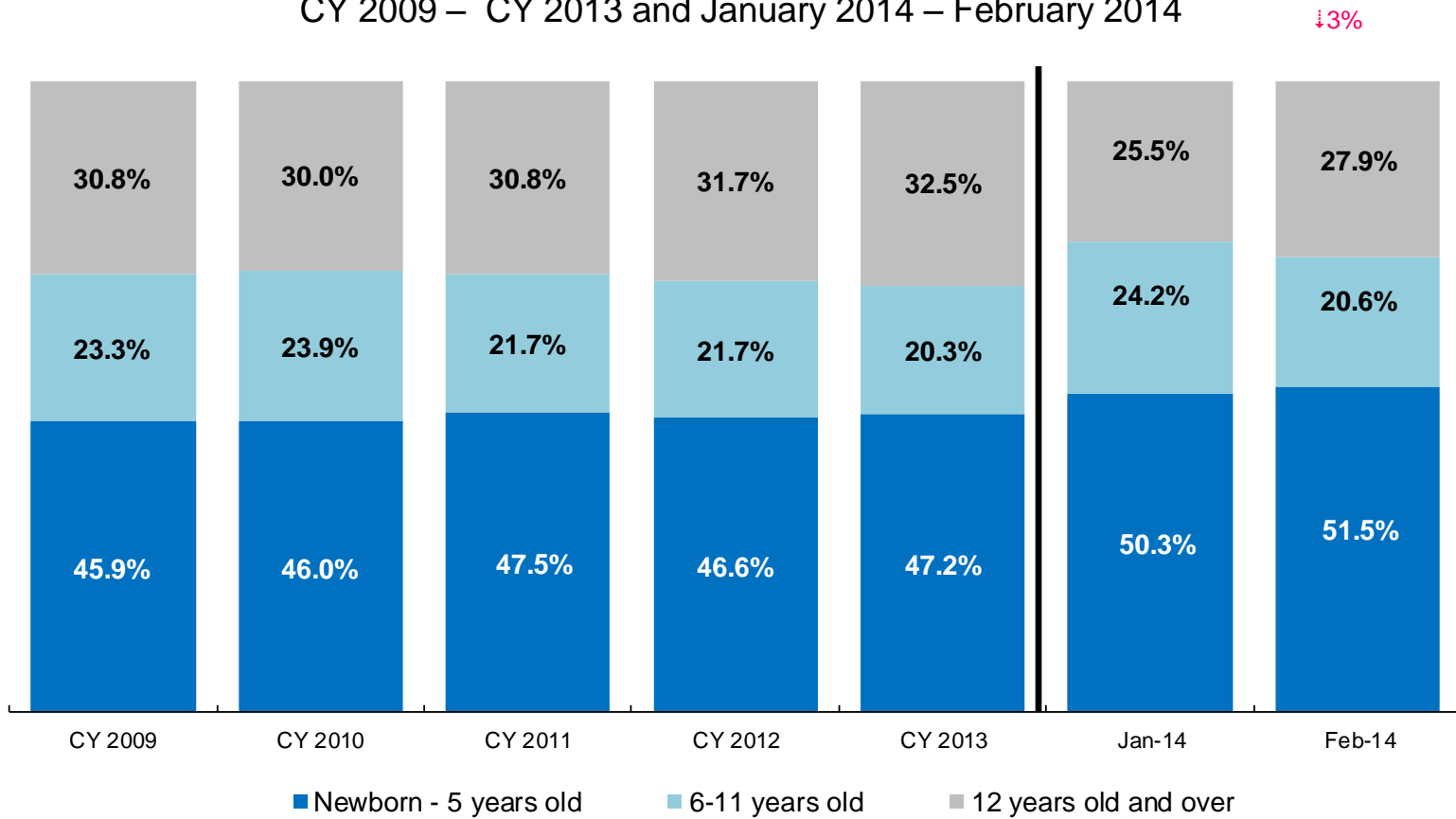


| | Feb 2013 | Mar 2013 | Apr 2013 | May 2013 | Jun 2013 | Jul 2013 | Aug 2013 | Sep 2013 | Oct 2013 | Nov 2013 | Dec 2013 | Jan 2014 | Feb 2014 |
|----------------------|----------|----------|----------|----------|----------|----------|----------|----------|----------|----------|----------|----------|----------|
| Number of Placements | 390 | 359 | 381 | 424 | 385 | 352 | 345 | 365 | 418 | 382 | 330 | 335 | 368 |

Note: Percentage change is February 2013 vs. February 2014.

Placements* by Age

CY 2009 – CY 2013 and January 2014 – February 2014



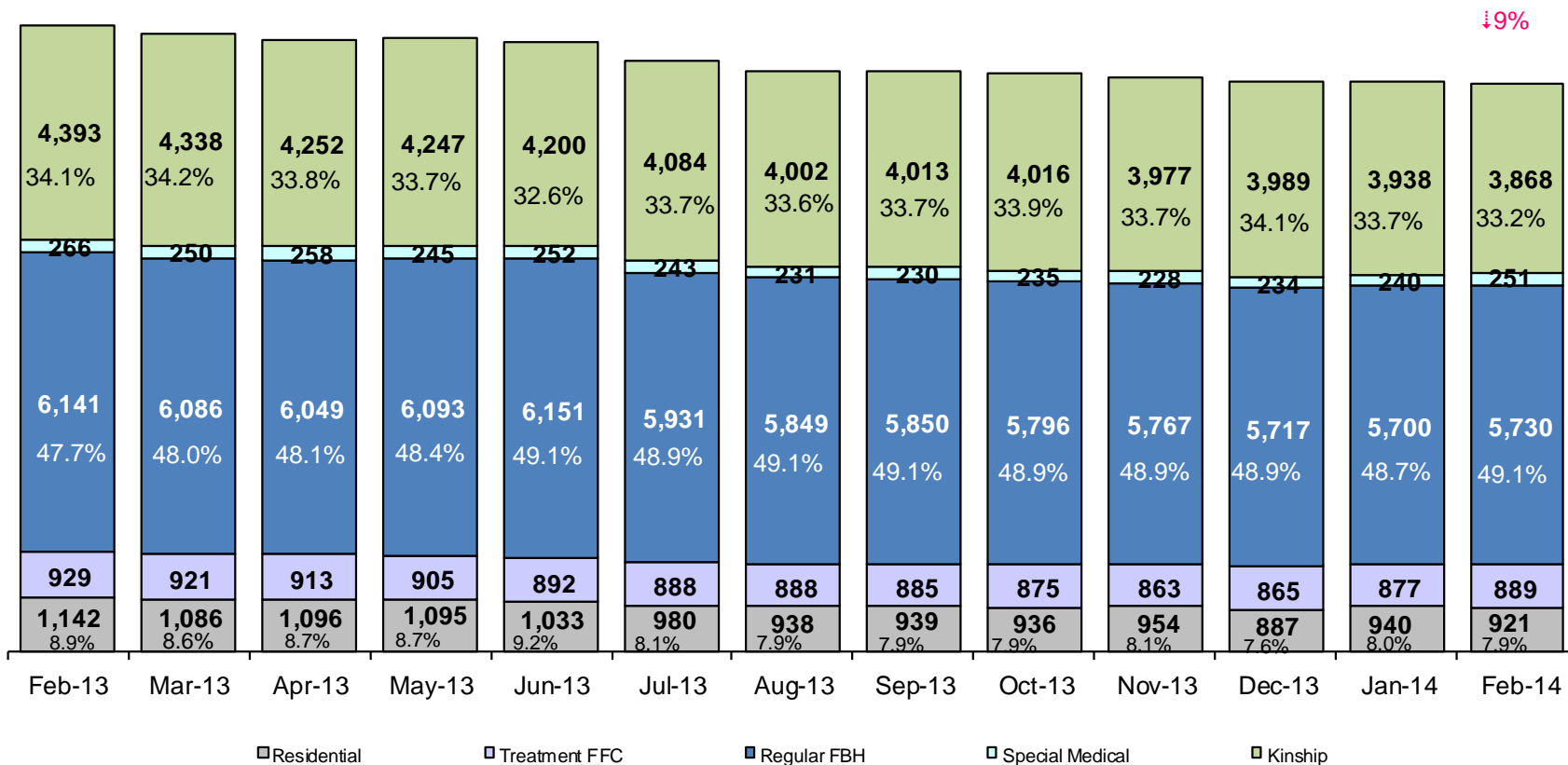
| | CY 2008 | CY 2009 | CY 2010 | CY 2011 | CY 2012 | CY 2013 | Jan 2014 | Feb 2014 |
|------------|---------|---------|---------|---------|---------|---------|----------|----------|
| Placements | 4,764 | 5,657 | 5,842 | 4,941 | 4,823 | 4,170 | 314 | 340 |

↓3%

*Excludes JD placements.

Note: Percentage change is February 2013 vs. February 2014.

Children in Foster Care* February 2013 – February 2014 (end of month)

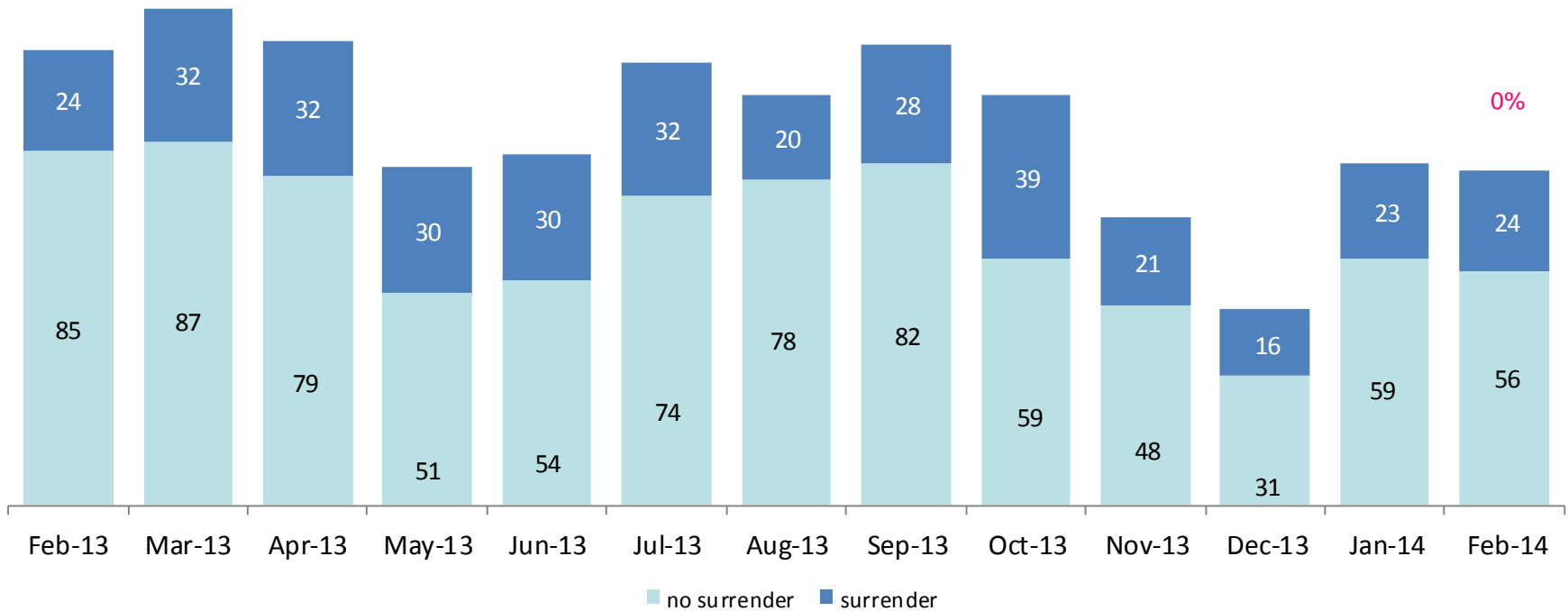


| | Feb 2013 | Mar 2013 | Apr 2013 | May 2013 | Jun 2013 | Jul 2013 | Aug 2013 | Sep 2013 | Oct 2013 | Nov 2013 | Dec 2013 | Jan 2014 | Feb 2014 |
|-----------------------|----------|----------|----------|----------|----------|----------|----------|----------|----------|----------|----------|----------|----------|
| Number in Foster Care | 12,871 | 12,681 | 12,568 | 12,585 | 12,528 | 12,126 | 11,908 | 11,917 | 11,858 | 11,789 | 11,692 | 11,695 | 11,659 |

*Excludes JD placements and includes approximately 400 young children who are living in foster homes or residential care facilities with their mothers who are in foster care (8D children).

Note: Percentage change is February 2013 vs. February 2014.

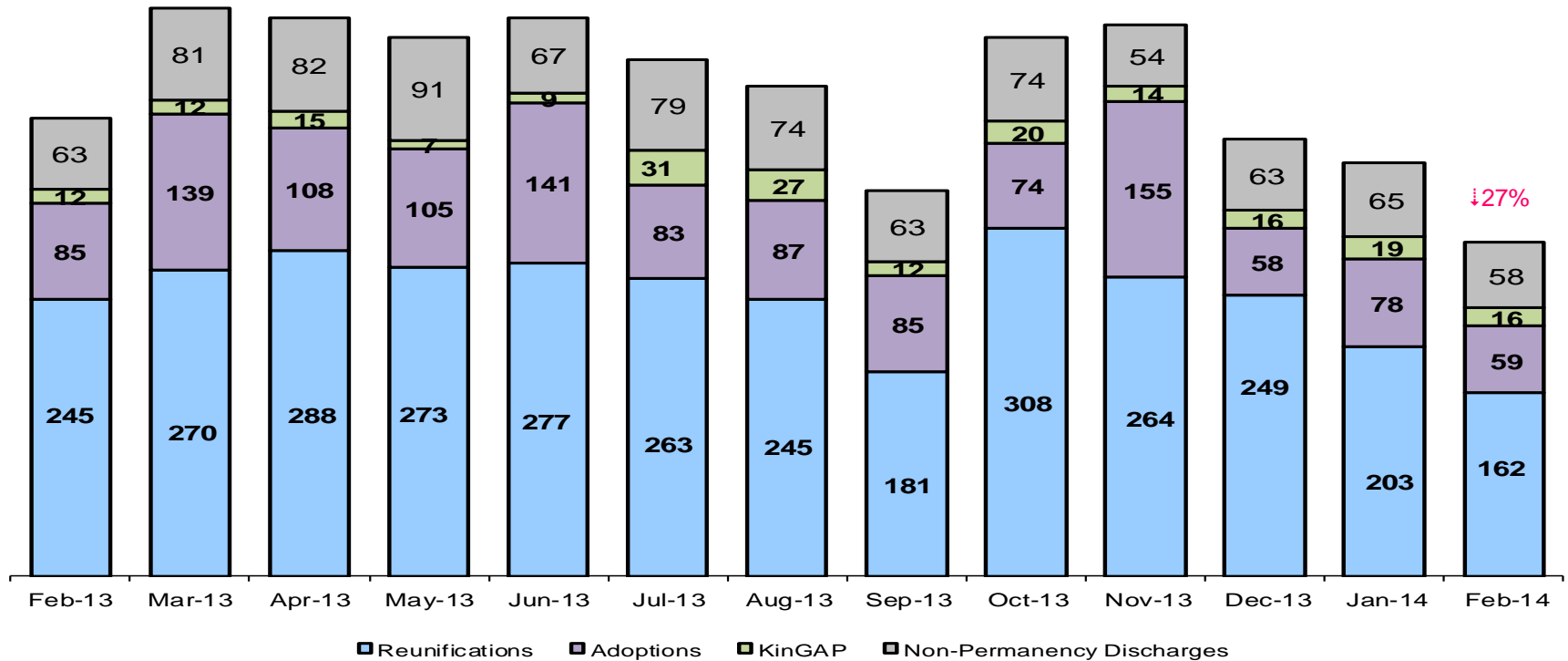
Children Freed for Adoption, Surrender by at Least One Parent February 2013 – February 2014



| | Feb 2013 | Mar 2013 | Apr 2013 | May 2013 | Jun 2013 | Jul 2013 | Aug 2013 | Sep 2013 | Oct 2013 | Nov 2013 | Dec 2013 | Jan 2014 | Feb 2014 |
|---------------------------|----------|----------|----------|----------|----------|----------|----------|----------|----------|----------|----------|----------|----------|
| Number Freed for Adoption | 109 | 119 | 111 | 81 | 84 | 106 | 98 | 110 | 98 | 69 | 47 | 82 | 80 |

Note: Percentage change is for the number of children surrendered by at least on parent during February 2013 vs. February 2014.

Permanency and Non-Permanency* Discharges from Foster Care** February 2013 – February 2014



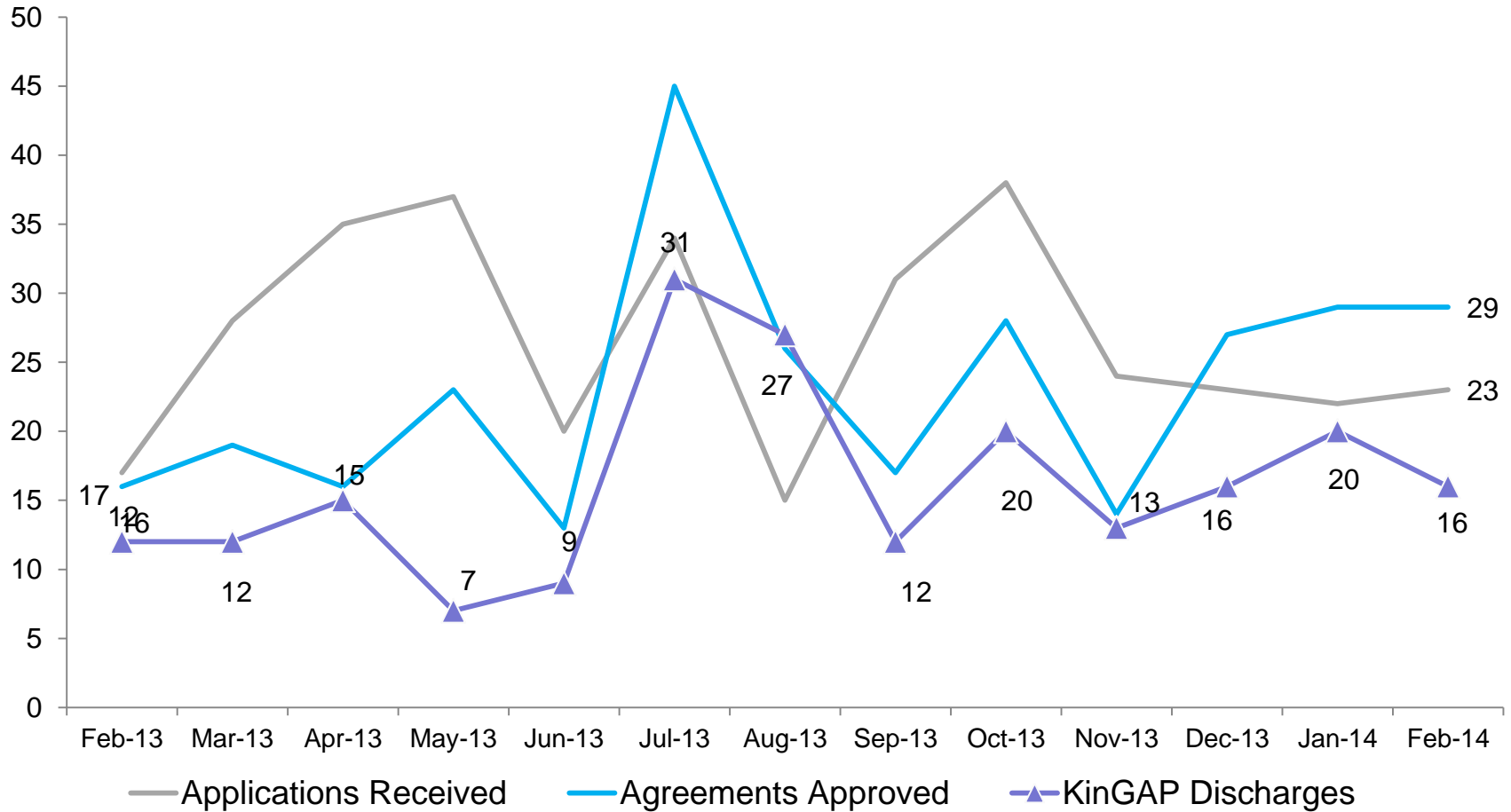
| | Feb 2013 | Mar 2013 | Apr 2013 | May 2013 | Jun 2013 | Jul 2013 | Aug 2013 | Sep 2013 | Oct 2013 | Nov 2013 | Dec 2013 | Jan 2014 | Feb 2014 |
|----------------------|----------|----------|----------|----------|----------|----------|----------|----------|----------|----------|----------|----------|----------|
| Number of Discharges | 405 | 504 | 493 | 476 | 494 | 456 | 433 | 341 | 476 | 487 | 386 | 365 | 295 |

*Non-permanency discharges include AWOL, APPLA as well as other discharge destinations such as mental institutions and correctional facilities and discharges with unspecified destinations.

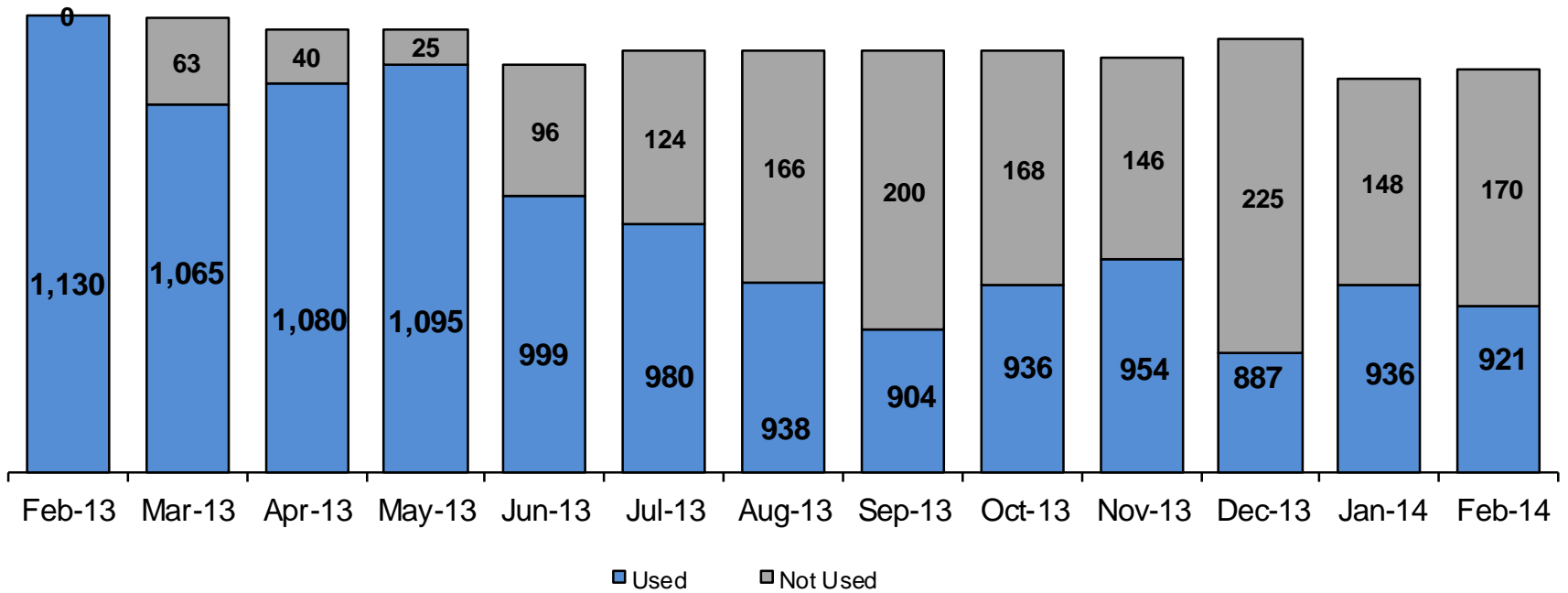
**Excludes discharges of youth who were in JD status at any time during their foster care spell.

Note: Percentage change is February 2013 vs. February 2014.

**KinGAP Applications Received, Agreements Approved and Discharges,
February 2013 – February 2014**



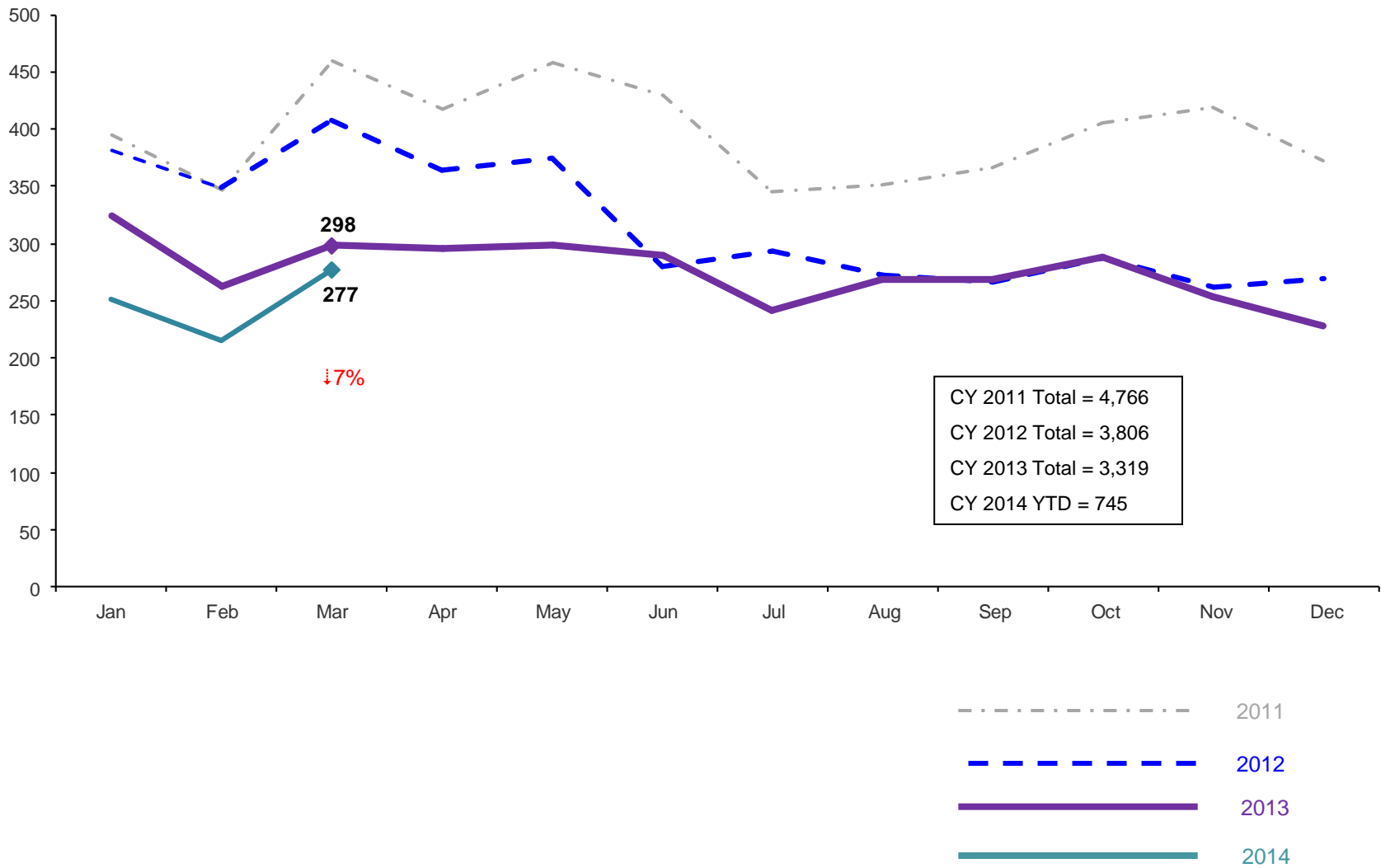
Residential Care Capacity and Utilization, February 2013 – February 2014



| | Feb 2013 | Mar 2013 | Apr 2013 | May 2013 | Jun 2013 | Jul 2013 | Aug 2013 | Sep 2013 | Oct 2013 | Nov 2013 | Dec 2013 | Jan 2014 | Feb 2014 |
|----------|----------|----------|----------|----------|----------|----------|----------|----------|----------|----------|----------|----------|----------|
| Capacity | 1,128 | 1,128 | 1,120 | 1,120 | 1,095 | 1,104 | 1,104 | 1,104 | 1,104 | 1,100 | 1,112 | 1,084 | 1,091 |

Total Monthly Admissions to Detention

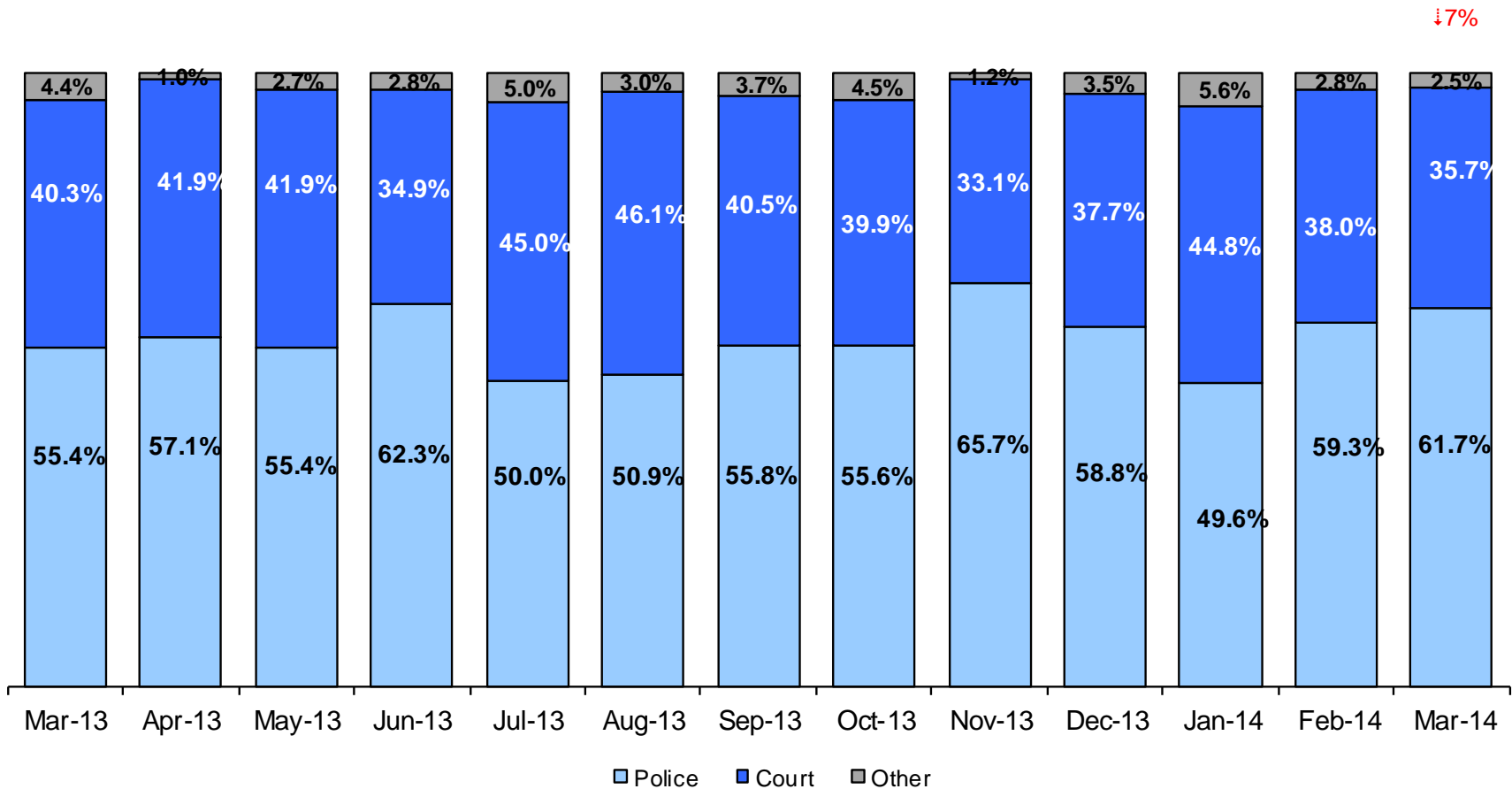
January 2011 - March 2014 (Monthly Total)



Note: Percentage change is March 2013 vs. March 2014.

Admit Authority on Admissions

March 2013 - March 2014(Monthly Total)



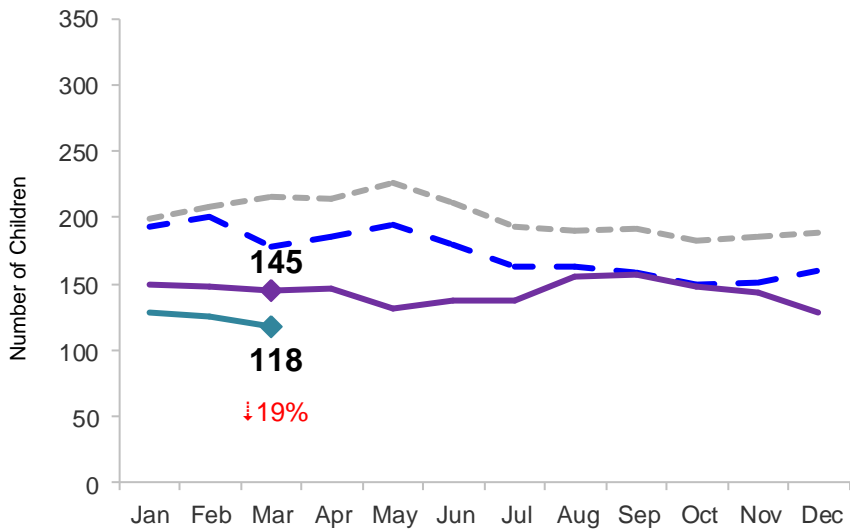
| | Mar 2013 | Apr 2013 | May 2013 | Jun 2013 | Jul 2013 | Aug 2013 | Sep 2013 | Oct 2013 | Nov 2013 | Dec 2013 | Jan 2014 | Feb 2014 | Mar 2014 |
|----------------------|----------|----------|----------|----------|----------|----------|----------|----------|----------|----------|----------|----------|----------|
| Number of Admissions | 298 | 296 | 298 | 289 | 242 | 269 | 269 | 288 | 254 | 228 | 252 | 216 | 277 |

Notes: 1) Other Admit Authority includes The Sheriff Department, Department of Corrections and ACS. 2) Percentage change is March 2013 vs. March 2014.

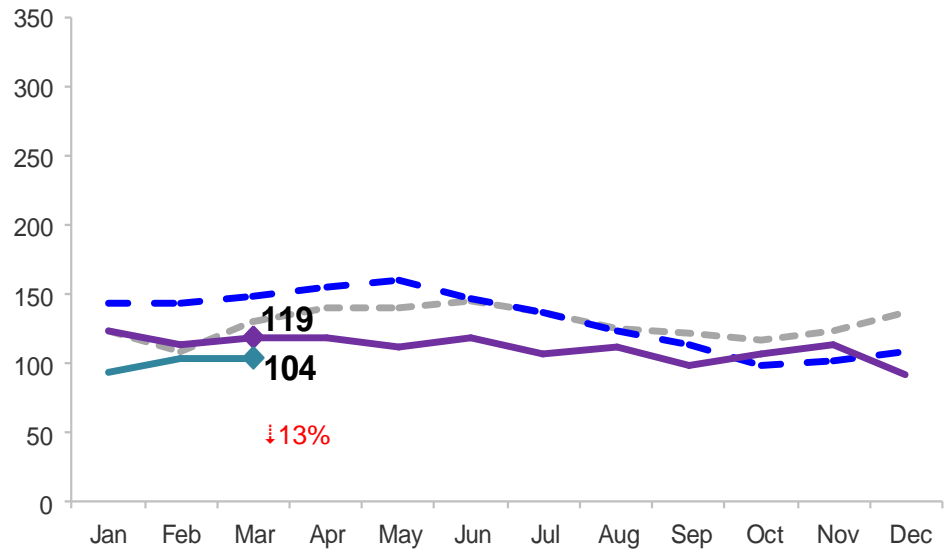
Monthly Average Daily Population

January 2011 – March 2014

Secure Detention



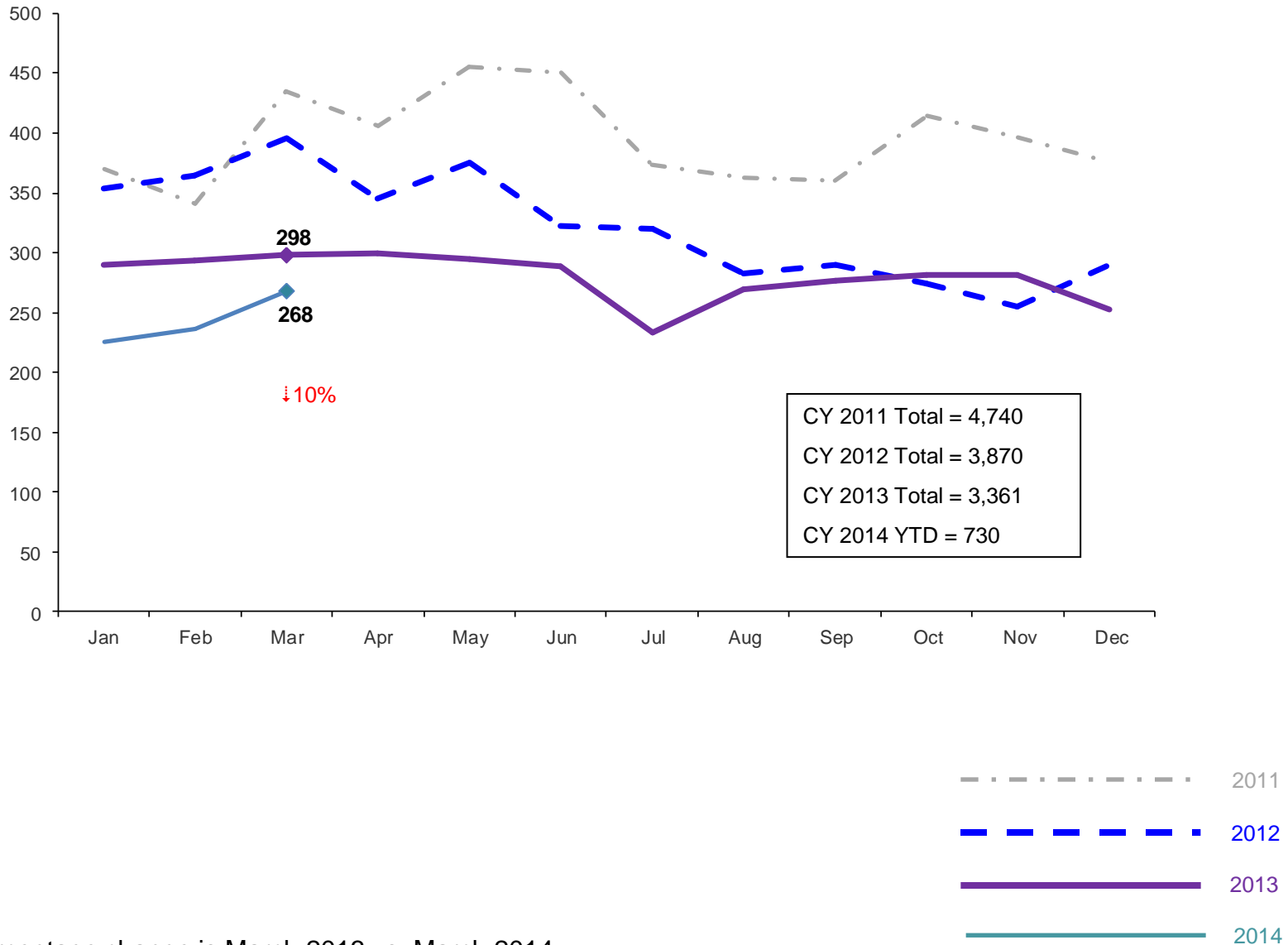
Non-Secure Detention



Note: Percentage change is March 2013 vs. March 2014.

Total Monthly Releases from Detention

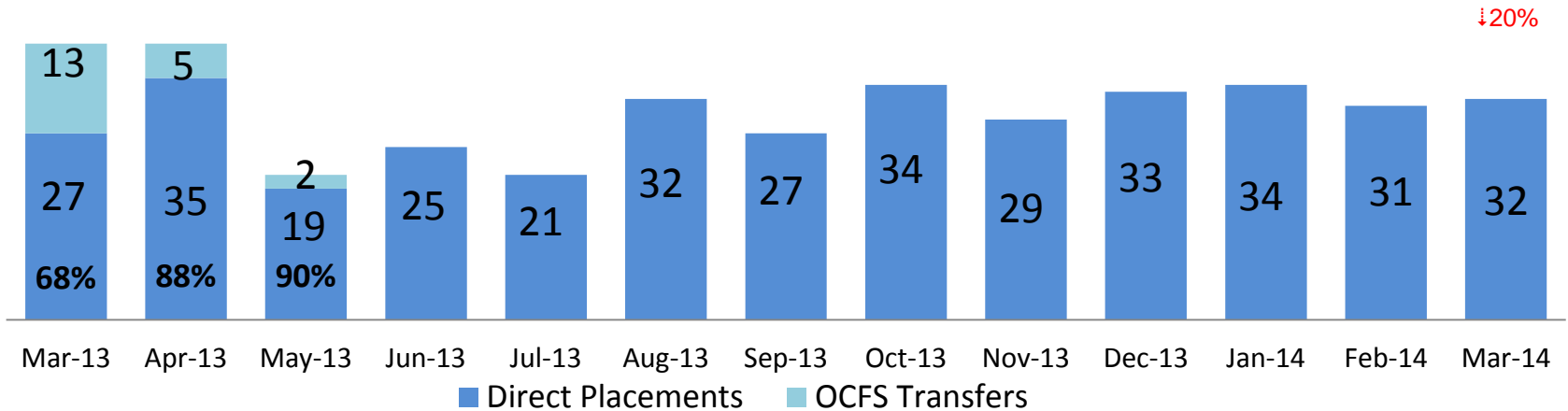
January 2011 – March 2014 (Monthly Total)



Note: Percentage change is March 2013 vs. March 2014.

ACS NSP Intakes

March 2013 – March 2014

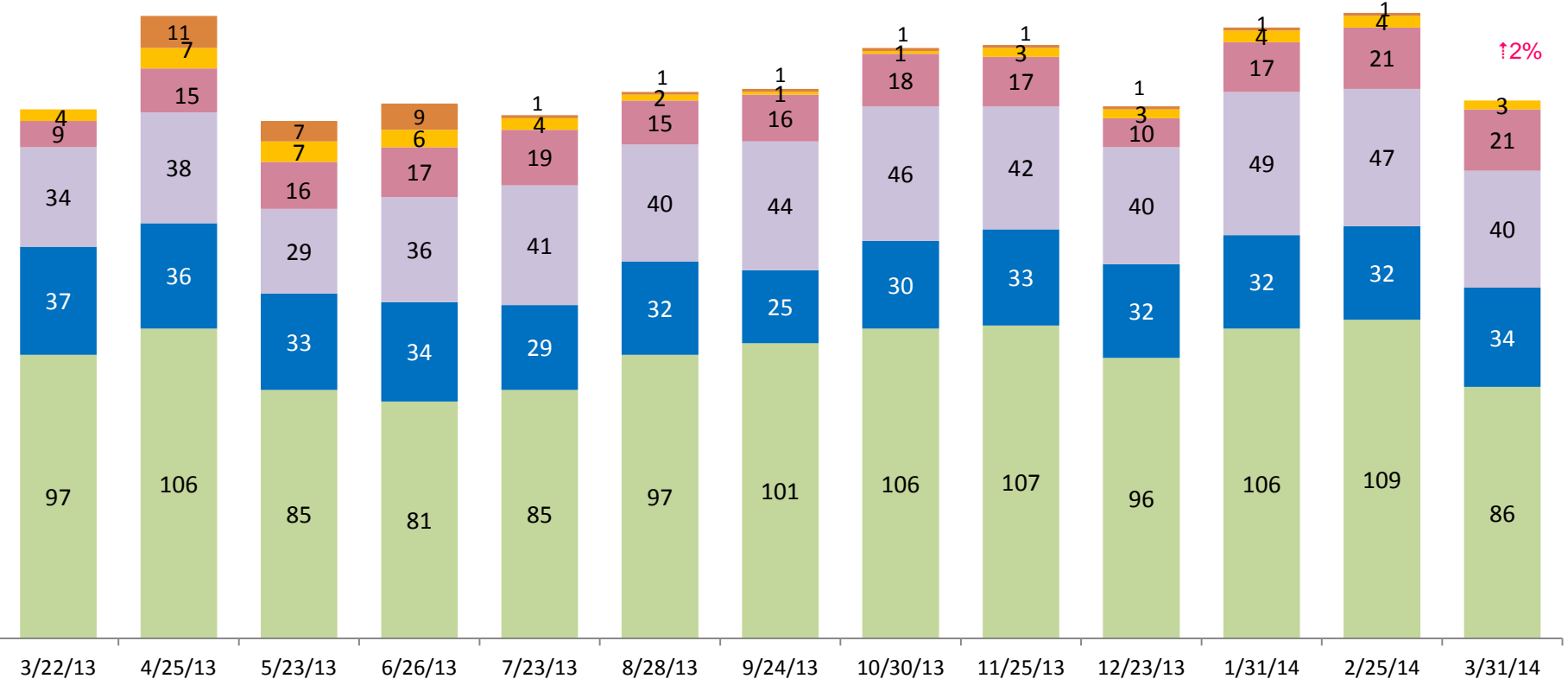


| | Mar 2013 | Apr 2013 | May 2013 | Jun 2013 | Jul 2013 | Aug 2013 | Sep 2013 | Oct 2013 | Nov 2013 | Dec 2013 | Jan 2014 | Feb 2014 | Mar 2014 |
|----------------------|----------|----------|----------|----------|----------|----------|----------|----------|----------|----------|----------|----------|----------|
| Number of Placements | 40 | 40 | 21 | 25 | 21 | 32 | 27 | 34 | 29 | 33 | 34 | 31 | 32 |

Note: Percentage change is March 2013 vs. March 2014.

ACS Non-Secure Placement, in 24 hour Care

March 2013 – March 2014 (Point-in-Time)



■ General, Male
 ■ General, Female
 ■ Specialized, Male
 ■ Specialized, Female
 ■ MTFC
 ■ Other*

| | 3/22/13 | 4/25/13 | 5/23/13 | 6/26/13 | 7/23/13 | 8/28/13 | 9/24/13 | 10/30/13 | 11/25/13 | 12/23/13 | 1/31/14 | 2/25/14 | 3/31/14 |
|---------------------|---------|---------|---------|---------|---------|---------|---------|----------|----------|----------|---------|---------|---------|
| Number in Placement | 181 | 213 | 177 | 183 | 179 | 187 | 188 | 202 | 203 | 182 | 209 | 214 | 184 |

*Other includes NYC youth in voluntary placements with Lincoln Hall, MercyFirst and Graham Windham.

Note: Percentage change for the Monthly Admissions to Detention is March 2013 vs. March 2014.

Appendix

Figure 1: SCR Intakes by Borough, JAN 13 – MAR 13 and JAN 14 – MAR 14

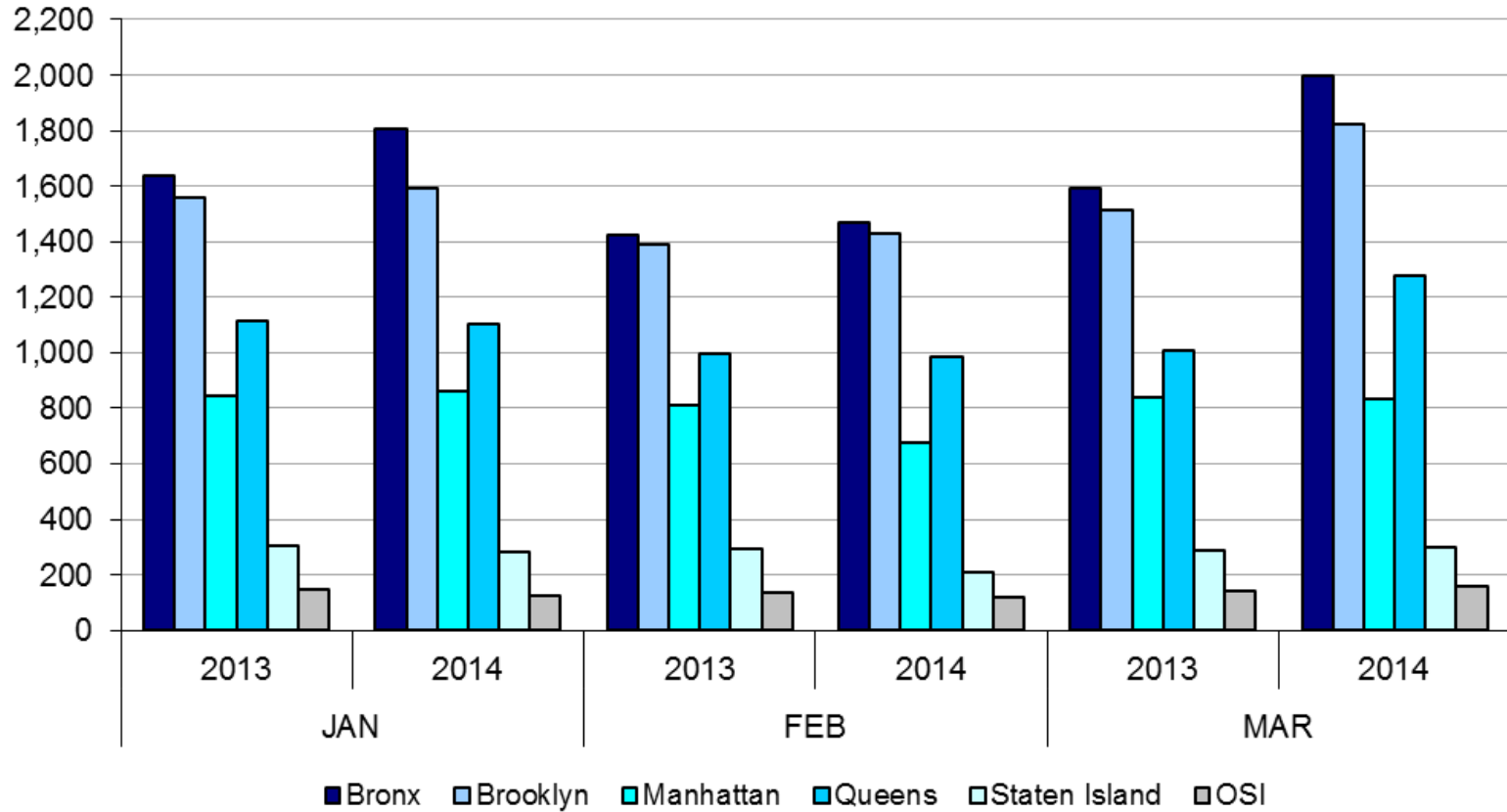


TABLE 1 - SCR Intake Changes by Borough, JAN 13 – MAR 13 and JAN 14 – MAR 14

| Month | Year | Bronx | Brooklyn | Manhattan | Queens | Staten Island | OSI | Other | Total |
|-------|----------|-------|----------|-----------|--------|---------------|--------|-------|--------|
| JAN | 2013 | 1,636 | 1,559 | 844 | 1,115 | 305 | 149 | 149 | 5,757 |
| | 2014 | 1,806 | 1,594 | 861 | 1,103 | 281 | 124 | 154 | 5,923 |
| | % Change | 10.4% | 2.2% | 2.0% | -1.1% | -7.9% | -16.8% | 3.4% | 2.9% |
| FEB | 2013 | 1,426 | 1,388 | 809 | 995 | 292 | 137 | 138 | 5,185 |
| | 2014 | 1,470 | 1,432 | 676 | 985 | 210 | 120 | 125 | 5,018 |
| | % Change | 3.1% | 3.2% | -16.4% | -1.0% | -28.1% | -12.4% | -9.4% | -3.2% |
| MAR | 2013 | 1,591 | 1,516 | 841 | 1,008 | 287 | 142 | 121 | 5,506 |
| | 2014 | 2,000 | 1,821 | 834 | 1,276 | 297 | 161 | 135 | 6,524 |
| | % Change | 25.7% | 20.1% | -0.8% | 26.6% | 3.5% | 13.4% | 11.6% | 18.5% |
| Total | 2013 | 4,653 | 4,463 | 2,494 | 3,118 | 884 | 428 | 408 | 16,448 |
| | 2014 | 5,276 | 4,847 | 2,371 | 3,364 | 788 | 405 | 414 | 17,465 |
| | % Change | 13.4% | 8.6% | -4.9% | 7.9% | -10.9% | -5.4% | 1.5% | 6.2% |

Figure 2: Citywide SCR Intakes by Reporter Group, JAN 13 – MAR 13 and JAN 14 – MAR 14

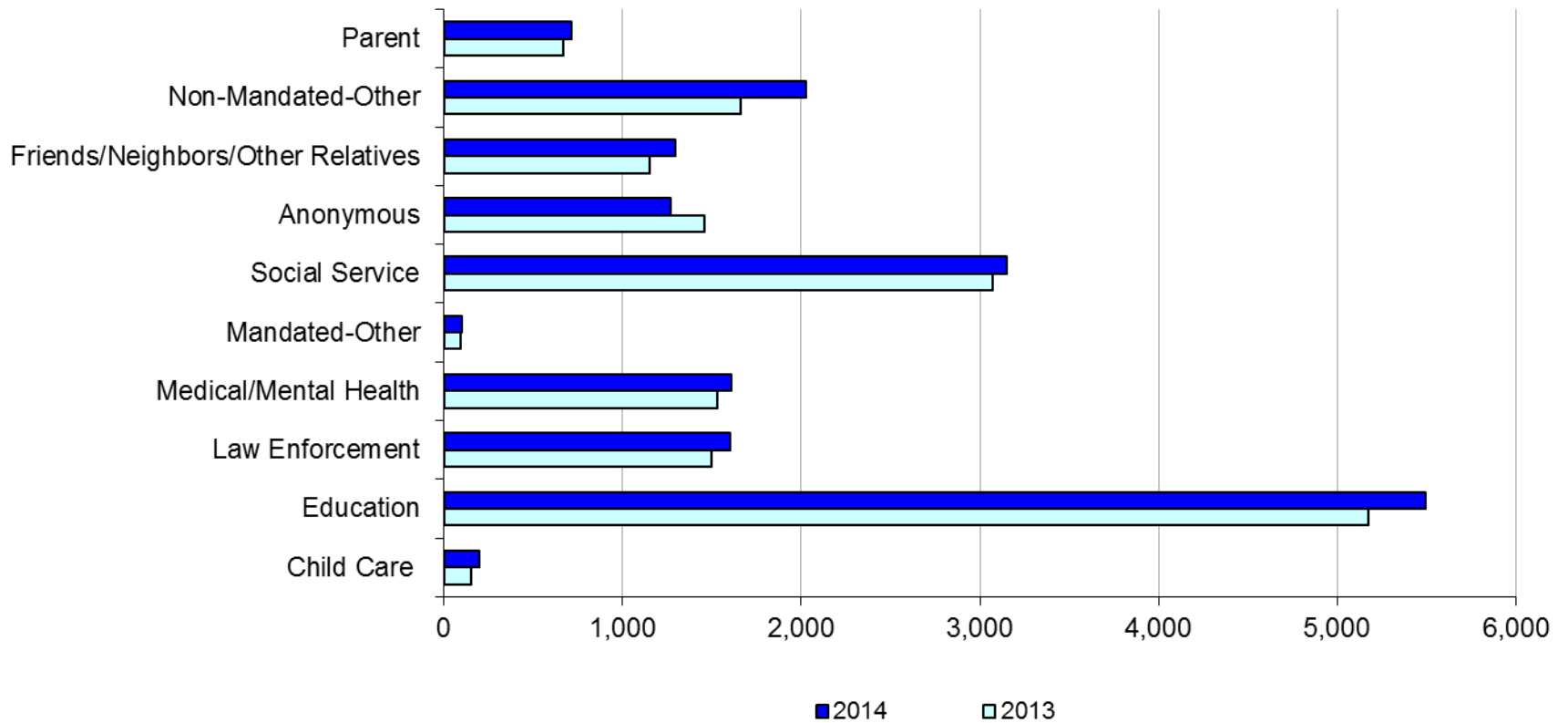
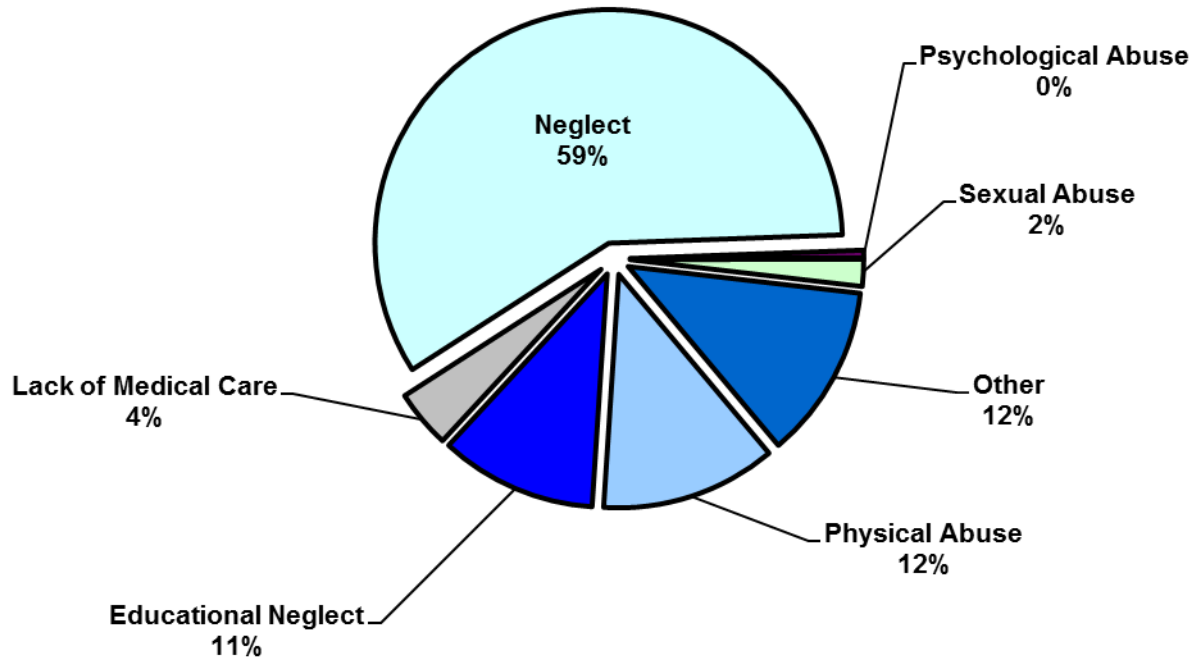


TABLE 2 - SCR Intakes by Reporter Group, JAN 13 – MAR 13 and JAN 14 – MAR 14

| Year | Child Care/ Substitute Care Personnel | Educational Personnel | Law Enforcement | Medical/ Mental Health Personnel | Mandated- Other | Social Service Personnel | Anonymous | Friends/ Neighbors/ Other Relatives | Non- Mandated- Other | Parent | Foster Parent | Total |
|----------------------|--|--------------------------|--------------------|--|--------------------|--------------------------------|-----------|--|----------------------------|--------|---------------|--------|
| Bronx | | | | | | | | | | | | |
| 2013 | 33 | 1,467 | 349 | 443 | 31 | 919 | 380 | 307 | 534 | 188 | 1 | 4,652 |
| 2014 | 57 | 1,738 | 454 | 481 | 27 | 997 | 351 | 400 | 578 | 192 | 0 | 5,275 |
| % Change | 72.7% | 18.5% | 30.1% | 8.6% | -12.9% | 8.5% | -7.6% | 30.3% | 8.2% | 2.1% | -- | 13.4% |
| Brooklyn | | | | | | | | | | | | |
| 2013 | 37 | 1,434 | 414 | 378 | 15 | 773 | 451 | 350 | 441 | 169 | 1 | 4,463 |
| 2014 | 49 | 1,587 | 407 | 423 | 28 | 836 | 384 | 367 | 590 | 177 | 0 | 4,848 |
| % Change | 32.4% | 10.7% | -1.7% | 11.9% | 86.7% | 8.2% | -14.9% | 4.9% | 33.8% | 4.7% | -- | 8.6% |
| Manhattan | | | | | | | | | | | | |
| 2013 | 31 | 703 | 295 | 232 | 18 | 491 | 209 | 173 | 245 | 92 | 2 | 2,491 |
| 2014 | 30 | 583 | 287 | 242 | 10 | 458 | 171 | 176 | 318 | 96 | 0 | 2,371 |
| % Change | -3.2% | -17.1% | -2.7% | 4.3% | -44.4% | -6.7% | -18.2% | 1.7% | 29.8% | 4.3% | -100.0% | -4.8% |
| Queens | | | | | | | | | | | | |
| 2013 | 21 | 1,111 | 283 | 280 | 14 | 588 | 256 | 212 | 241 | 111 | 1 | 3,118 |
| 2014 | 26 | 1,219 | 287 | 295 | 24 | 548 | 248 | 241 | 344 | 130 | 2 | 3,364 |
| % Change | 23.8% | 9.7% | 1.4% | 5.4% | 71.4% | -6.8% | -3.1% | 13.7% | 42.7% | 17.1% | 100.0% | 7.9% |
| Staten Island | | | | | | | | | | | | |
| 2013 | 7 | 350 | 60 | 91 | 5 | 115 | 106 | 66 | 52 | 32 | 0 | 884 |
| 2014 | 5 | 286 | 65 | 81 | 4 | 114 | 69 | 66 | 62 | 36 | 0 | 788 |
| % Change | -28.6% | -18.3% | 8.3% | -11.0% | -20.0% | -0.9% | -34.9% | 0.0% | 19.2% | 12.5% | -- | -10.9% |
| OSI | | | | | | | | | | | | |
| 2013 | 16 | 48 | 15 | 54 | 9 | 73 | 43 | 17 | 104 | 48 | 0 | 427 |
| 2014 | 23 | 39 | 24 | 39 | 6 | 84 | 27 | 22 | 89 | 50 | 2 | 405 |
| % Change | 43.8% | -18.8% | 60.0% | -27.8% | -33.3% | 15.1% | -37.2% | 29.4% | -14.4% | 4.2% | -- | -5.2% |
| Other | | | | | | | | | | | | |
| 2013 | 8 | 58 | 80 | 52 | 2 | 115 | 14 | 27 | 43 | 28 | 0 | 427 |
| 2014 | 7 | 44 | 81 | 49 | 3 | 115 | 21 | 24 | 44 | 34 | 0 | 422 |
| % Change | -12.5% | -24.1% | 1.3% | -5.8% | 50.0% | 0.0% | 50.0% | -11.1% | 2.3% | 21.4% | -- | -1.2% |
| Citywide | | | | | | | | | | | | |
| 2013 | 153 | 5,171 | 1,496 | 1,530 | 94 | 3,074 | 1,459 | 1,152 | 1,660 | 668 | 5 | 16,462 |
| 2014 | 197 | 5,496 | 1,605 | 1,610 | 102 | 3,152 | 1,271 | 1,296 | 2,025 | 715 | 4 | 17,473 |
| % Change | 28.8% | 6.3% | 7.3% | 5.2% | 8.5% | 2.5% | -12.9% | 12.5% | 22.0% | 7.0% | -20.0% | 6.1% |

Figure 3: SCR Allegations, JAN 14 – MAR 14



Total Allegations = 42,559

TABLE 3 - SCR Allegations, JAN 13 - MAR 13 and JAN 14 - MAR 14

| Year | Physical Abuse | Educational Neglect | Lack of Medical Care | Neglect | Psychological Abuse | Sexual Abuse | Other | Total |
|----------------------|----------------|---------------------|----------------------|---------|---------------------|--------------|--------|--------|
| Bronx | | | | | | | | |
| 2013 | 1,406 | 1,499 | 480 | 7,045 | 78 | 244 | 1,610 | 12,362 |
| 2014 | 1,401 | 1,660 | 533 | 7,486 | 63 | 199 | 1,573 | 12,915 |
| % Change | -0.4% | 10.7% | 11.0% | 6.3% | -19.2% | -18.4% | -2.3% | 4.5% |
| Brooklyn | | | | | | | | |
| 2013 | 1,485 | 1,203 | 455 | 6,867 | 73 | 251 | 1,653 | 11,987 |
| 2014 | 1,461 | 1,395 | 474 | 7,082 | 69 | 254 | 1,396 | 12,131 |
| % Change | -1.6% | 16.0% | 4.2% | 3.1% | -5.5% | 1.2% | -15.5% | 1.2% |
| Manhattan | | | | | | | | |
| 2013 | 628 | 604 | 213 | 3021 | 40 | 89 | 670 | 5,265 |
| 2014 | 575 | 468 | 206 | 2863 | 14 | 88 | 580 | 4,794 |
| % Change | -8.4% | -22.5% | -3.3% | -5.2% | -65.0% | -1.1% | -13.4% | -8.9% |
| Queens | | | | | | | | |
| 2013 | 1,163 | 596 | 255 | 4,324 | 52 | 188 | 973 | 7,551 |
| 2014 | 1,183 | 687 | 297 | 4,599 | 52 | 140 | 967 | 7,925 |
| % Change | 1.7% | 15.3% | 16.5% | 6.4% | 0.0% | -25.5% | -0.6% | 5.0% |
| Staten Island | | | | | | | | |
| 2013 | 276 | 265 | 71 | 1,296 | 13 | 35 | 317 | 2,273 |
| 2014 | 189 | 205 | 71 | 1,181 | 14 | 33 | 307 | 2,000 |
| % Change | -31.5% | -22.6% | 0.0% | -8.9% | 7.7% | -5.7% | -3.2% | -12.0% |
| OSI | | | | | | | | |
| 2013 | 248 | 65 | 63 | 1,159 | 9 | 59 | 221 | 1,824 |
| 2014 | 266 | 52 | 73 | 1,060 | 3 | 40 | 126 | 1,620 |
| % Change | 7.3% | -20.0% | 15.9% | -8.5% | -66.7% | -32.2% | -43.0% | -11.2% |
| Other | | | | | | | | |
| 2013 | 100 | 146 | 61 | 702 | 6 | 27 | 214 | 1,256 |
| 2014 | 93 | 146 | 57 | 644 | 10 | 41 | 183 | 1,174 |
| % Change | -7.0% | 0.0% | -6.6% | -8.3% | 66.7% | 51.9% | -14.5% | -6.5% |
| Citywide | | | | | | | | |
| 2013 | 5,306 | 4,378 | 1,598 | 24,414 | 271 | 893 | 5,658 | 42,518 |
| 2014 | 5,168 | 4,613 | 1,711 | 24,915 | 225 | 795 | 5,132 | 42,559 |
| % Change | -2.6% | 5.4% | 7.1% | 2.1% | -17.0% | -11.0% | -9.3% | 0.1% |

TABLE 4 - Purchased Preventive Cases Opened and Closed
January 2012 to March 2014

| Month | Opened Cases | Closed Cases |
|-------------|--------------|--------------|
| 2012 | | |
| Jan-12 | 870 | 629 |
| Feb-12 | 889 | 835 |
| Mar-12 | 944 | 991 |
| Apr-12 | 997 | 870 |
| May-12 | 1,117 | 979 |
| Jun-12 | 965 | 869 |
| Jul-12 | 853 | 979 |
| Aug-12 | 917 | 1,007 |
| Sep-12 | 727 | 900 |
| Oct-12 | 875 | 915 |
| Nov-12 | 738 | 702 |
| Dec-12 | 938 | 871 |
| 2013 | | |
| Jan-13 | 960 | 884 |
| Feb-13 | 873 | 916 |
| Mar-13 | 962 | 1,171 |
| Apr-13 | 940 | 988 |
| May-13 | 864 | 1,337 |
| Jun-13 | 863 | 780 |
| Jul-13 | 868 | 1,004 |
| Aug-13 | 802 | 1,084 |
| Sep-13 | 844 | 724 |
| Oct-13 | 933 | 765 |
| Nov-13 | 901 | 685 |
| Dec-13 | 1,106 | 552 |
| 2014 | | |
| Jan-14 | 983 | 640 |
| Feb-14 | 987 | 679 |
| Mar-14 | 1,146 | 874 |

**Table 5 - Referrals to Purchased Preventive Services by Source
January 2012 to March 2014**

| Month | Total Referrals | Division of Child Protection | Foster Care Agencies | PPRS Transfer | School | Self | Other Sources* |
|-------------|-----------------|------------------------------|----------------------|---------------|--------|------|----------------|
| 2012 | | | | | | | |
| Jan-12 | 1,431 | 66.5% | 0.7% | 8.5% | 3.6% | 3.8% | 17.0% |
| Feb-12 | 1,043 | 78.2% | 1.1% | 9.0% | 1.9% | 6.7% | 3.1% |
| Mar-12 | 1,525 | 73.6% | 0.9% | 6.0% | 1.8% | 3.9% | 13.8% |
| Apr-12 | 1,370 | 72.8% | 1.0% | 9.4% | 1.2% | 4.2% | 11.4% |
| May-12 | 1,463 | 70.9% | 1.0% | 7.6% | 1.1% | 4.4% | 15.0% |
| Jun-12 | 1,279 | 73.8% | 0.5% | 5.9% | 1.0% | 4.7% | 14.2% |
| Jul-12 | 1,308 | 77.4% | 1.2% | 7.0% | 0.3% | 3.7% | 10.5% |
| Aug-12 | 1,391 | 74.0% | 0.9% | 11.7% | 0.3% | 2.9% | 10.2% |
| Sep-12 | 1,110 | 70.5% | 1.9% | 9.6% | 1.2% | 5.0% | 11.9% |
| Oct-12 | 1,159 | 61.1% | 1.4% | 12.6% | 2.7% | 4.9% | 17.3% |
| Nov-12 | 1,106 | 67.0% | 1.0% | 9.9% | 2.2% | 4.7% | 15.3% |
| Dec-12 | 1,206 | 68.7% | 0.8% | 5.8% | 2.7% | 5.6% | 16.4% |
| CY 2012 | 15,391 | 71.3% | 1.0% | 8.5% | 1.6% | 4.5% | 13.1% |
| 2013 | | | | | | | |
| Jan-13 | 1,474 | 74.1% | 1.2% | 7.3% | 1.2% | 3.7% | 12.5% |
| Feb-13 | 1,308 | 75.8% | 1.1% | 8.0% | 1.6% | 2.9% | 10.6% |
| Mar-13 | 1,270 | 73.5% | 1.2% | 6.7% | 2.4% | 3.9% | 12.3% |
| Apr-13 | 1,421 | 77.9% | 0.8% | 7.4% | 0.9% | 3.0% | 10.1% |
| May-13 | 1,320 | 68.4% | 0.5% | 10.2% | 1.5% | 3.8% | 15.5% |
| Jun-13 | 953 | 69.2% | 1.2% | 9.4% | 2.6% | 5.0% | 12.6% |
| Jul-13 | 1,014 | 66.3% | 1.9% | 14.4% | 1.6% | 3.9% | 11.9% |
| Aug-13 | 1,212 | 70.5% | 0.7% | 11.8% | 0.7% | 4.7% | 11.6% |
| Sep-13 | 1,262 | 64.0% | 2.1% | 11.3% | 1.7% | 6.7% | 14.2% |
| Oct-13 | 1,319 | 61.0% | 1.1% | 9.0% | 2.9% | 7.5% | 18.5% |
| Nov-13 | 1,249 | 55.9% | 1.6% | 10.5% | 4.6% | 9.2% | 18.3% |
| Dec-13 | 1,464 | 62.2% | 1.2% | 8.2% | 2.3% | 9.2% | 17.0% |
| 2014 | | | | | | | |
| Jan-14 | 1,537 | 70.0% | 1.2% | 6.6% | 2.3% | 5.8% | 14.2% |
| Feb-14 | 1,334 | 69.7% | 0.8% | 8.4% | 1.7% | 5.5% | 13.9% |
| Mar-14 | 1,612 | 70.0% | 1.4% | 8.6% | 1.6% | 5.3% | 13.1% |

*Other Community Sources includes the Department of Homeless Services, Family Court, FAP, Hospitals and Medical facilities, the NYC Housing Authority, PINS/DAS, Probation, and Sponsor Agencies.