

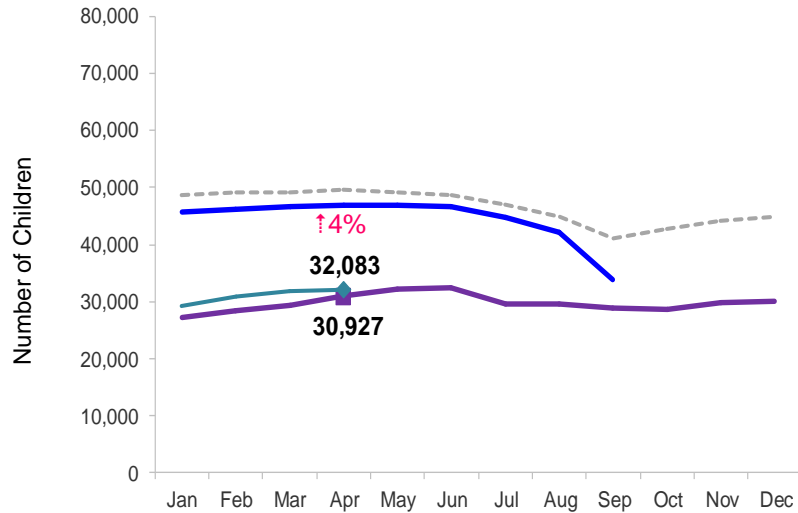


# Flash

May 2014

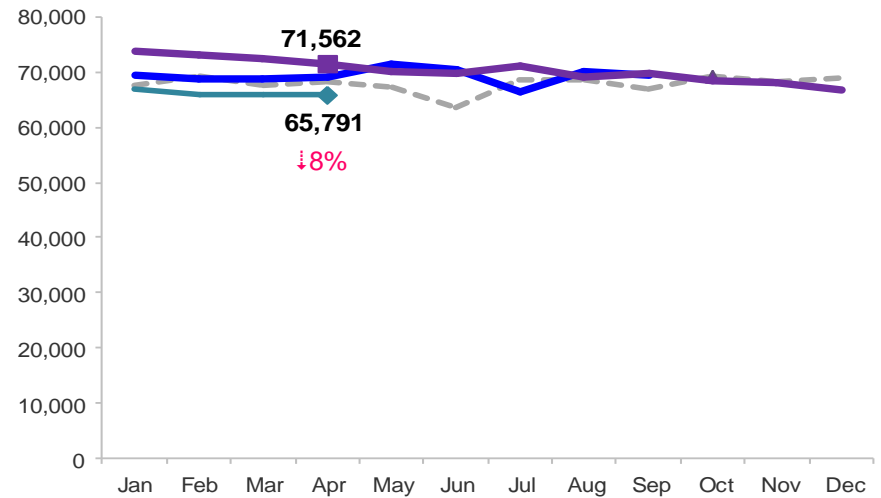
### Children Enrolled in Contracted Early Learn Programs

January 2011 – April 2014 (End of Month)



### Children Using Vouchers for Child Care

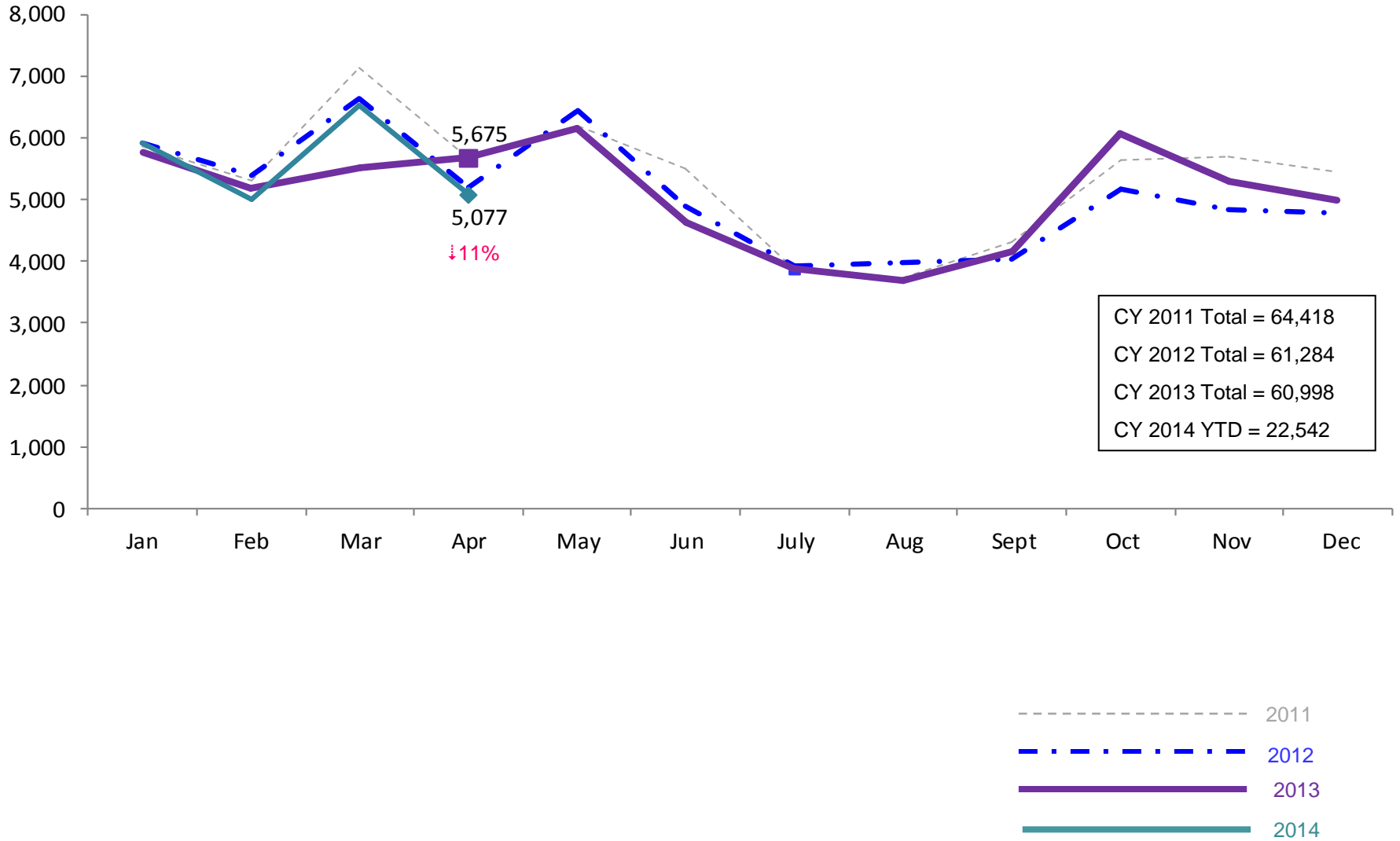
January 2011 – April 2014 (End of Month)



Notes: 1) Beginning October 1, 2012 ACS converted its early care and education system to a new model, Early Learn NYC. Enrollment data for the transitional months of October – December 2012 are not available because contractors were in the midst of implementing the data collection systems. 2) Percentage change is April 2013 vs. April 2014.

### SCR Intakes

January 2011 – April 2014 (Monthly Total)

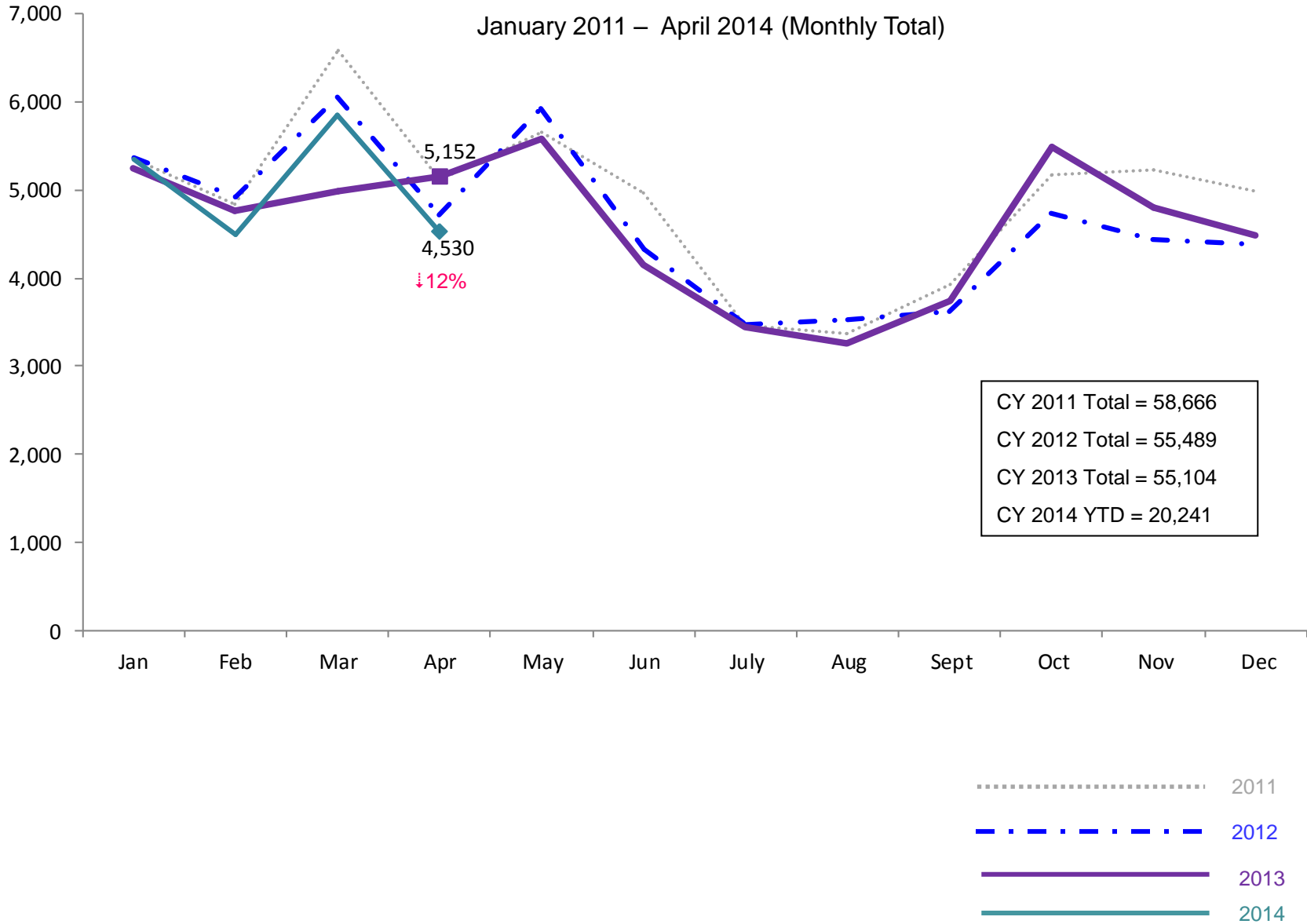


Note: Percentage change is April 2013 vs. April 2014.

See Pages 28 through 33 of the Appendix for supporting data.

### SCR Consolidated Investigations

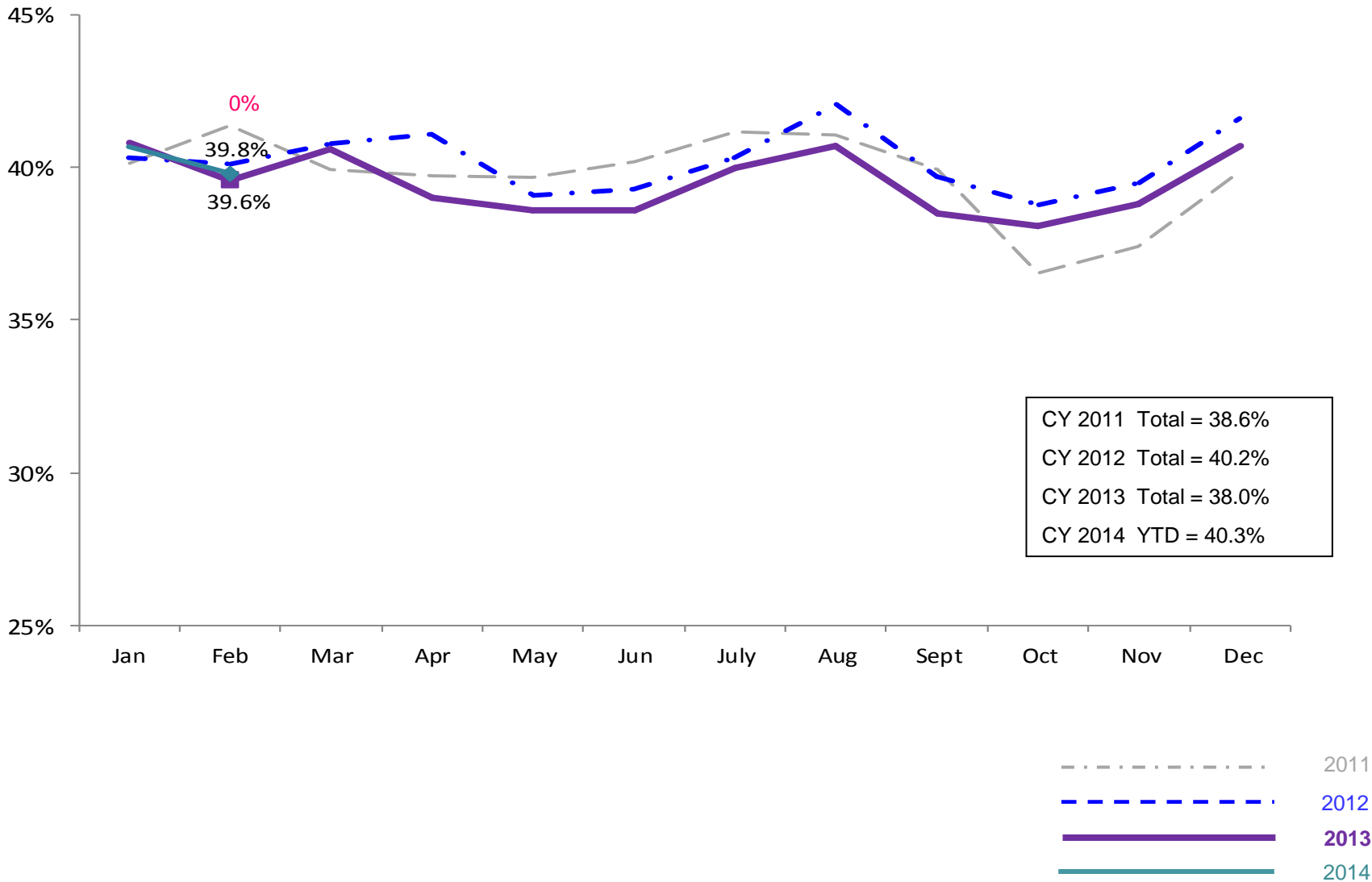
January 2011 – April 2014 (Monthly Total)



Note: Percentage change is April 2013 vs. April 2014.

### SCR Investigation Indication Rate

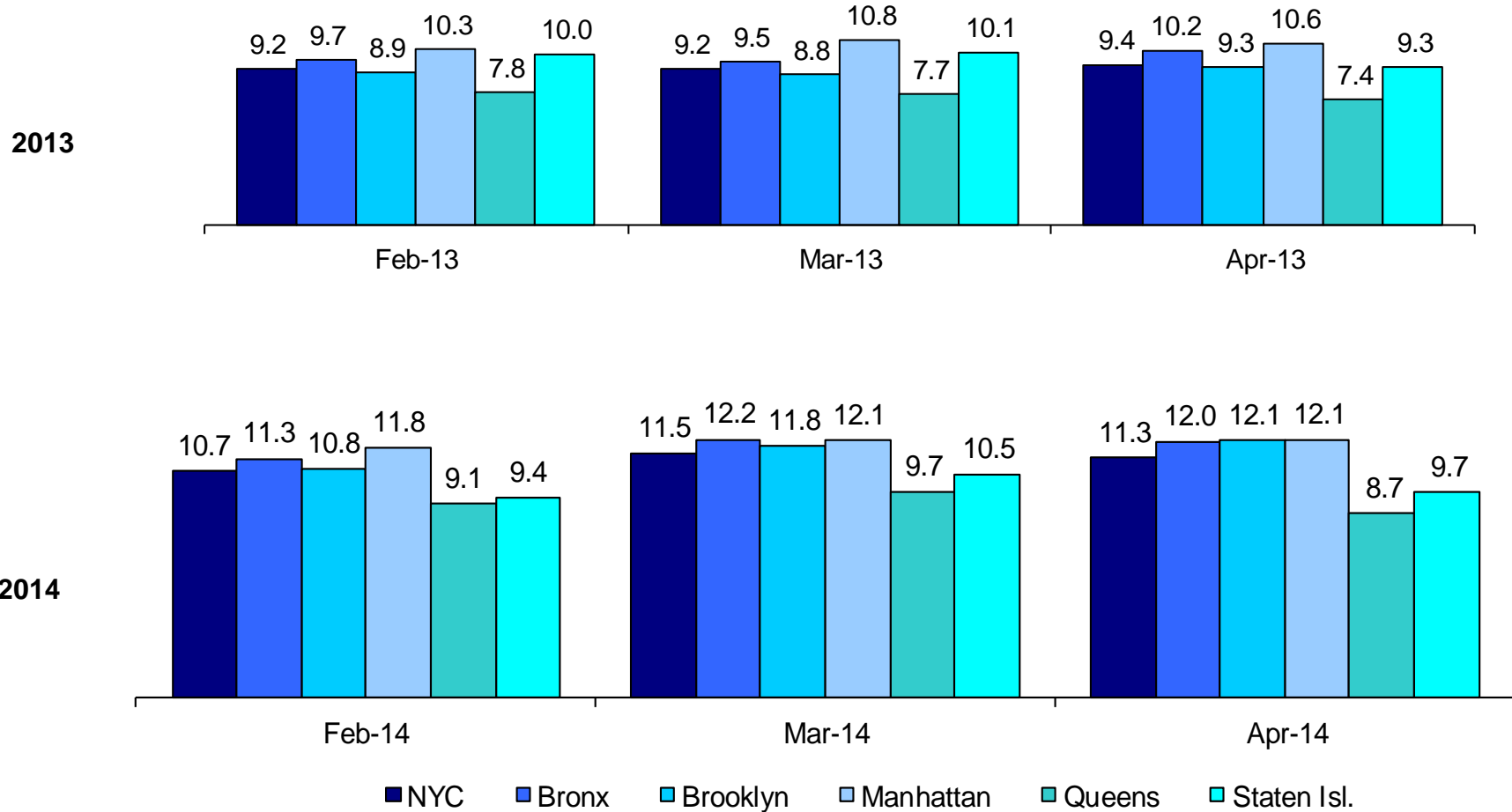
January 2011 – February 2014



Note: Percentage change is February 2013 vs. February 2014.

**Average P/D Combined Caseload\***

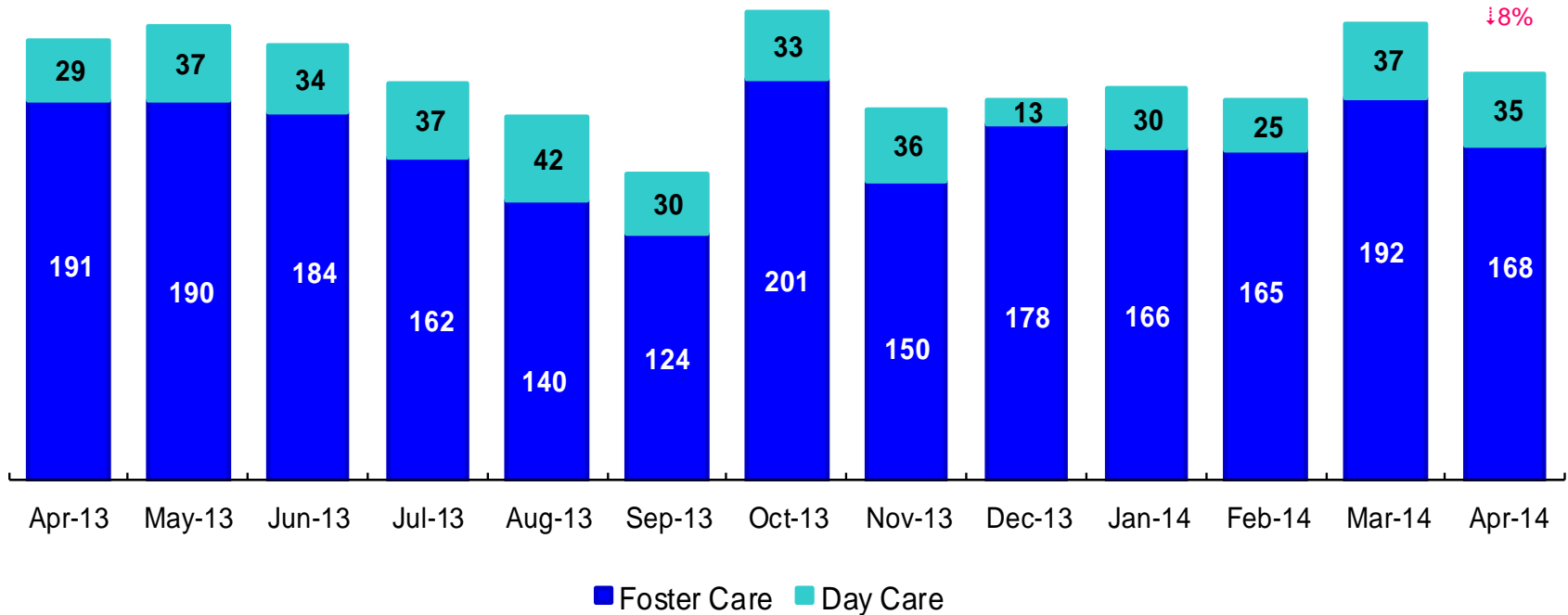
February 2013 – April 2013 & February 2014 – April 2014



\* Caseloads are of protective/diagnostic caseworkers only and exclude the caseloads carried by Level I and Level II Supervisors. 6

### OSI Investigations by Program

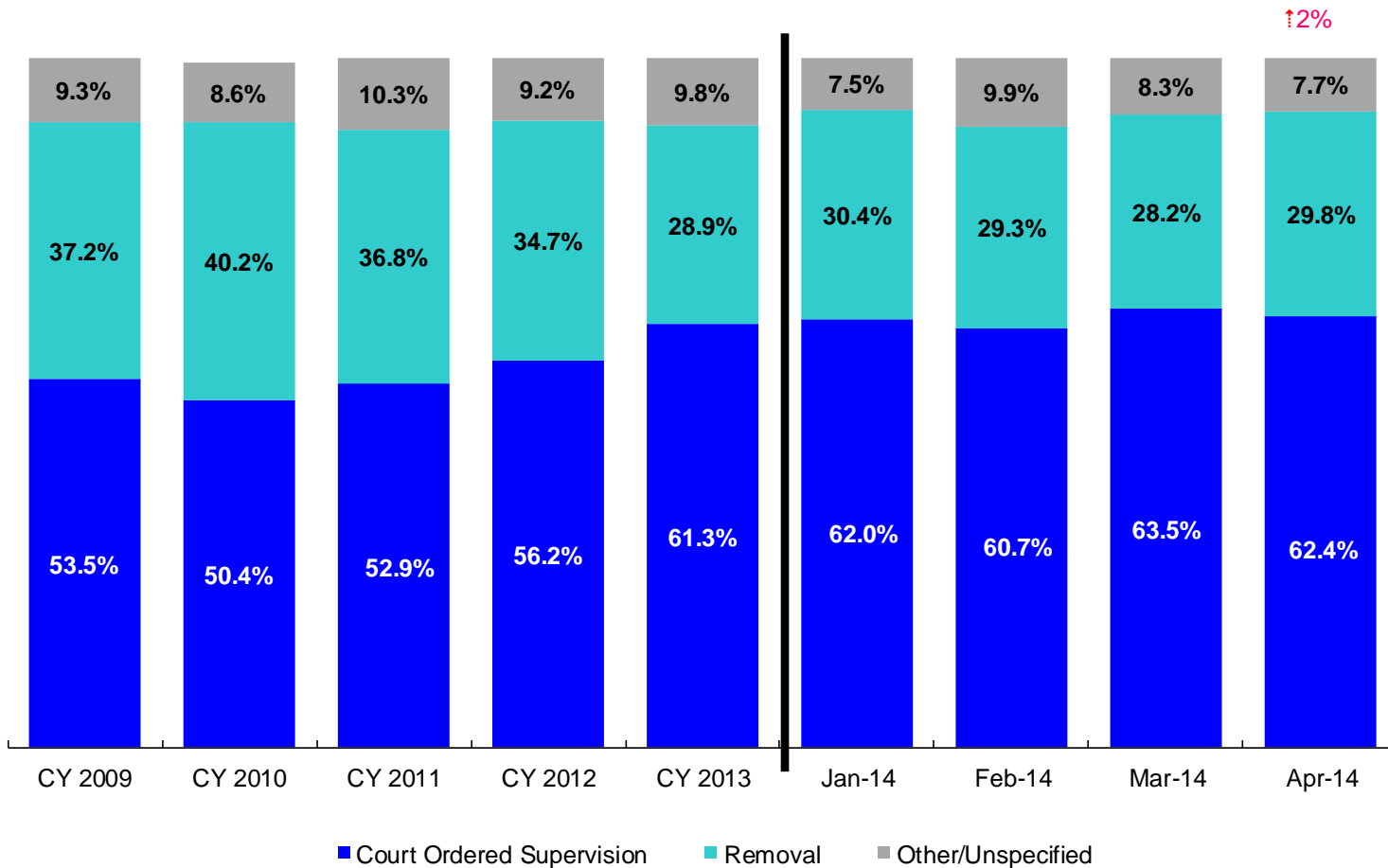
April 2013– April 2014



	Apr 2013	May 2013	Jun 2013	Jul 2013	Aug 2013	Sep 2013	Oct 2013	Nov 2013	Dec 2013	Jan 2014	Feb 2014	Mar 2014	Apr 2014
Number of Investigations	220	227	218	199	182	154	234	186	191	196	190	229	203

Note: Percentage change is April 2013 vs. April 2014.

Article 10 Total Filings & Filing Outcomes, CY 2009 - CY 2013 and January – April 2014



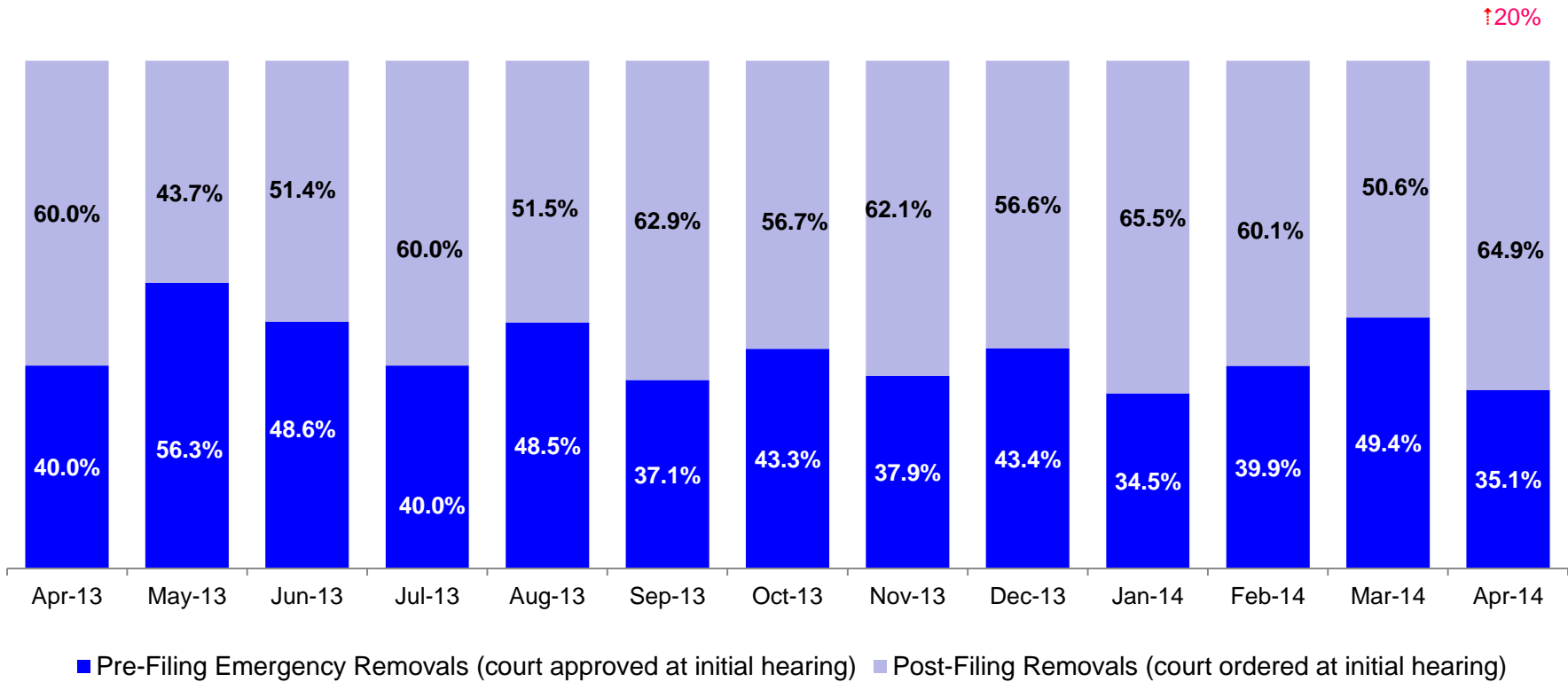
	CY 2009	CY 2010	CY 2011	CY 2012	CY 2013	Jan 2014	Feb 2014	Mar 2014	Apr 2014
Art.10 Filings	11,568	10,093	9,596	8,913	9,318	743	828	905	801

↑2%

Notes: 1) The category “Other/Unspecified” includes released with no supervision, no order issued and no outcome specified. Outcomes of cases heard the next day are not captured in this report. 2) Percentage change is April 2013 vs. April 2014.



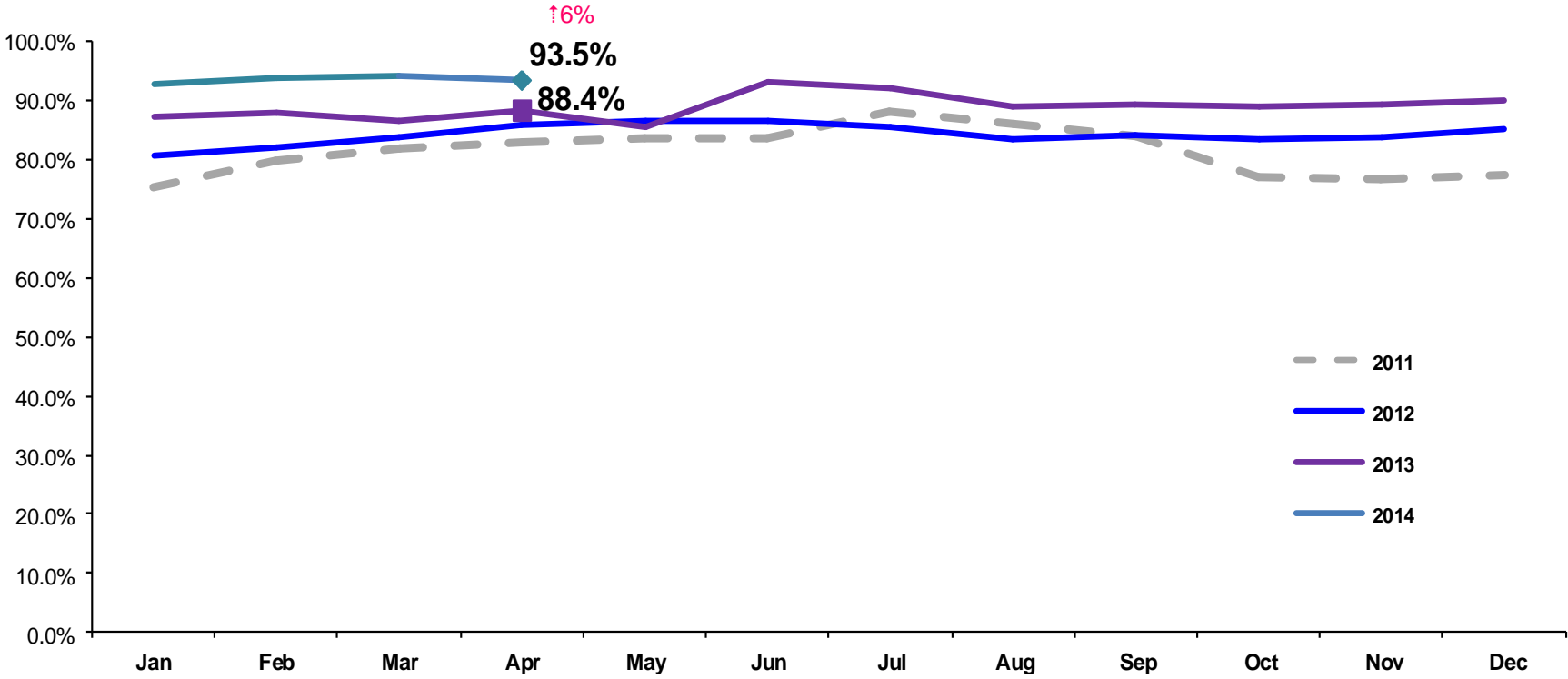
### Article 10 Filing Removals, April 2013 – April 2014



	Apr 2013	May 2013	Jun 2013	Jul 2013	Aug 2013	Sep 2013	Oct 2013	Nov 2013	Dec 2013	Jan 2014	Feb 2014	Mar 2014	Apr 2014
Number of Removals	200	247	220	220	200	229	261	224	212	226	243	255	239

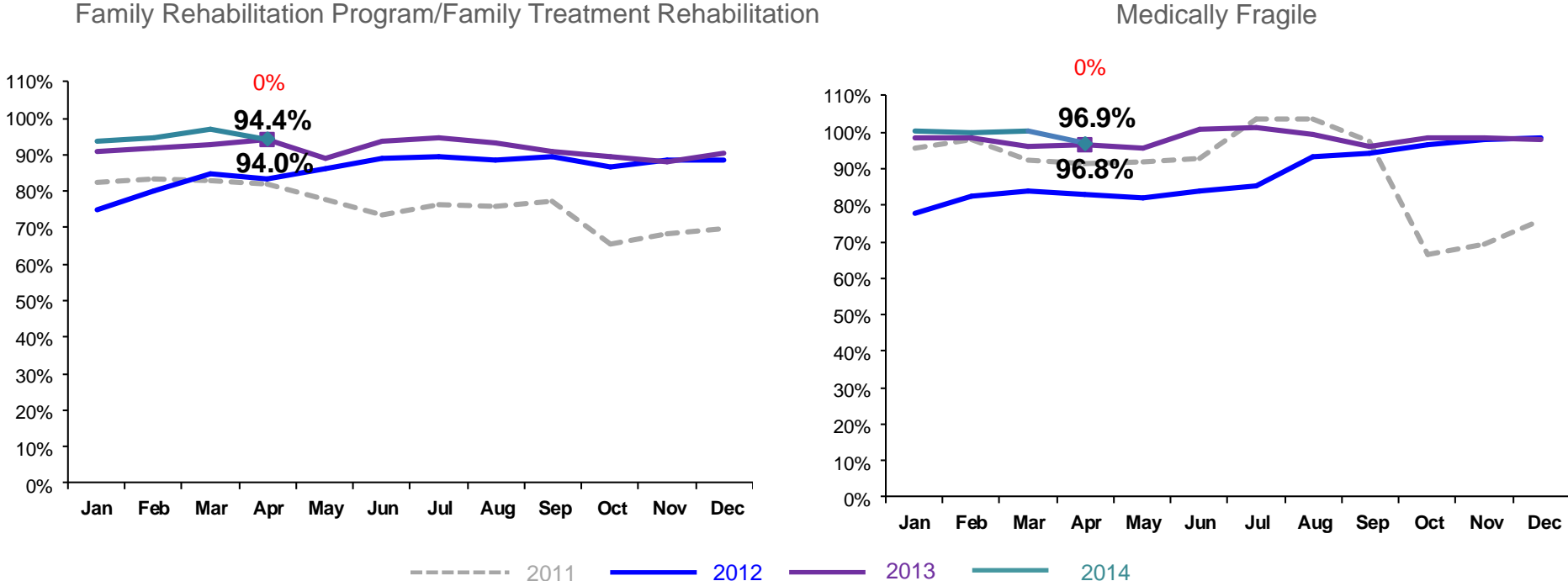
Note: Percentage change is April 2013 vs. April 2014.

**PPRS Utilization Rate**  
 January 2011 – April 2014 (End of Month)  
 General Preventive



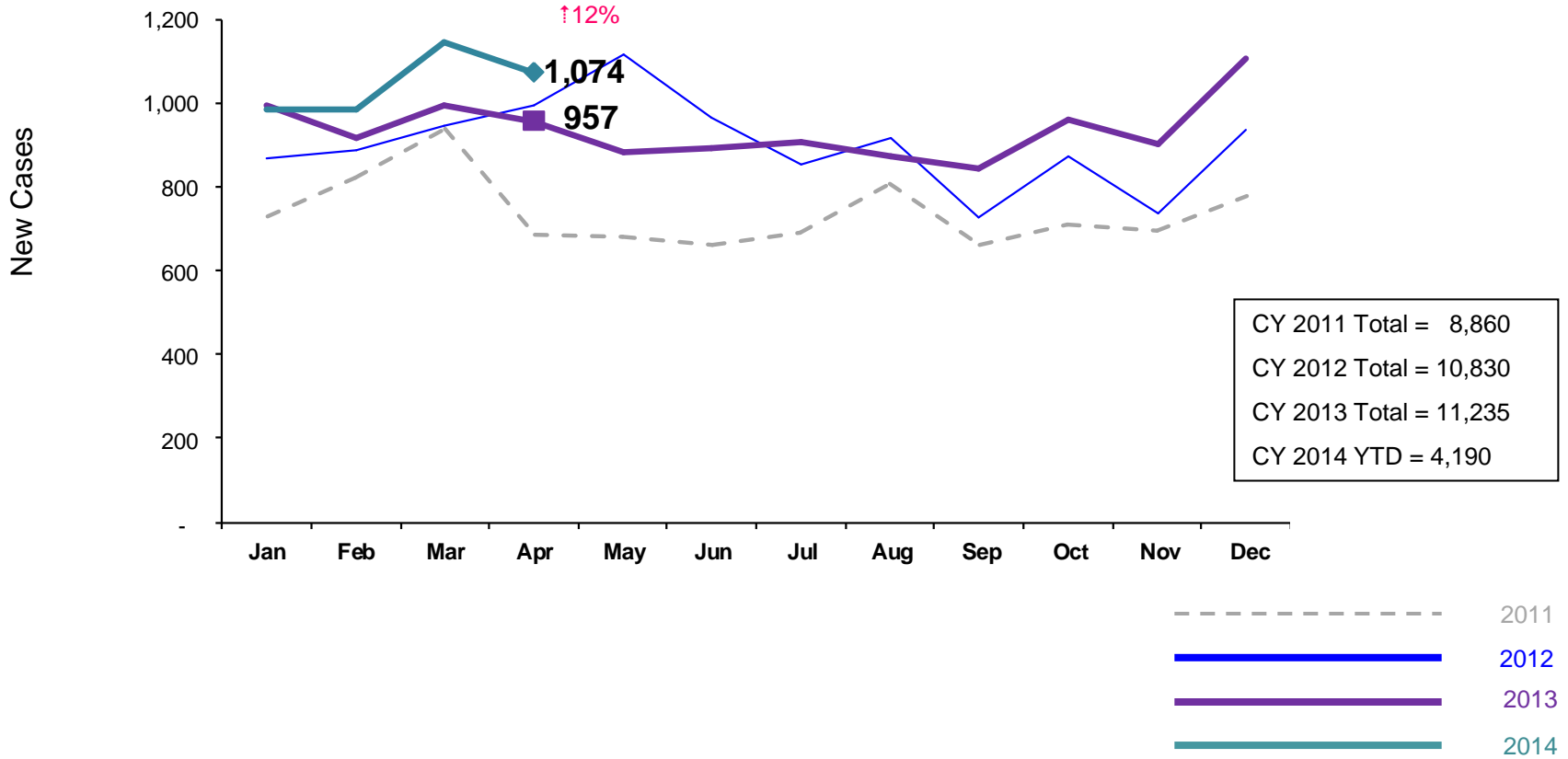
Notes: 1) Beacons programs are included in the GP utilization rates. 2) During February - June 2011 GP rates were adjusted by excluding programs in the process of being closed. GP rates were also adjusted during July – September 2011 by excluding newly opened programs. 3) During June-October 2013 GP programs in the process of converting to EBMs were excluded from the GP utilization statistics. 4) Percentage change is April 2013 vs. April 2014.

### PPRS Utilization Rate January 2011 – April 2014 (End of Month)



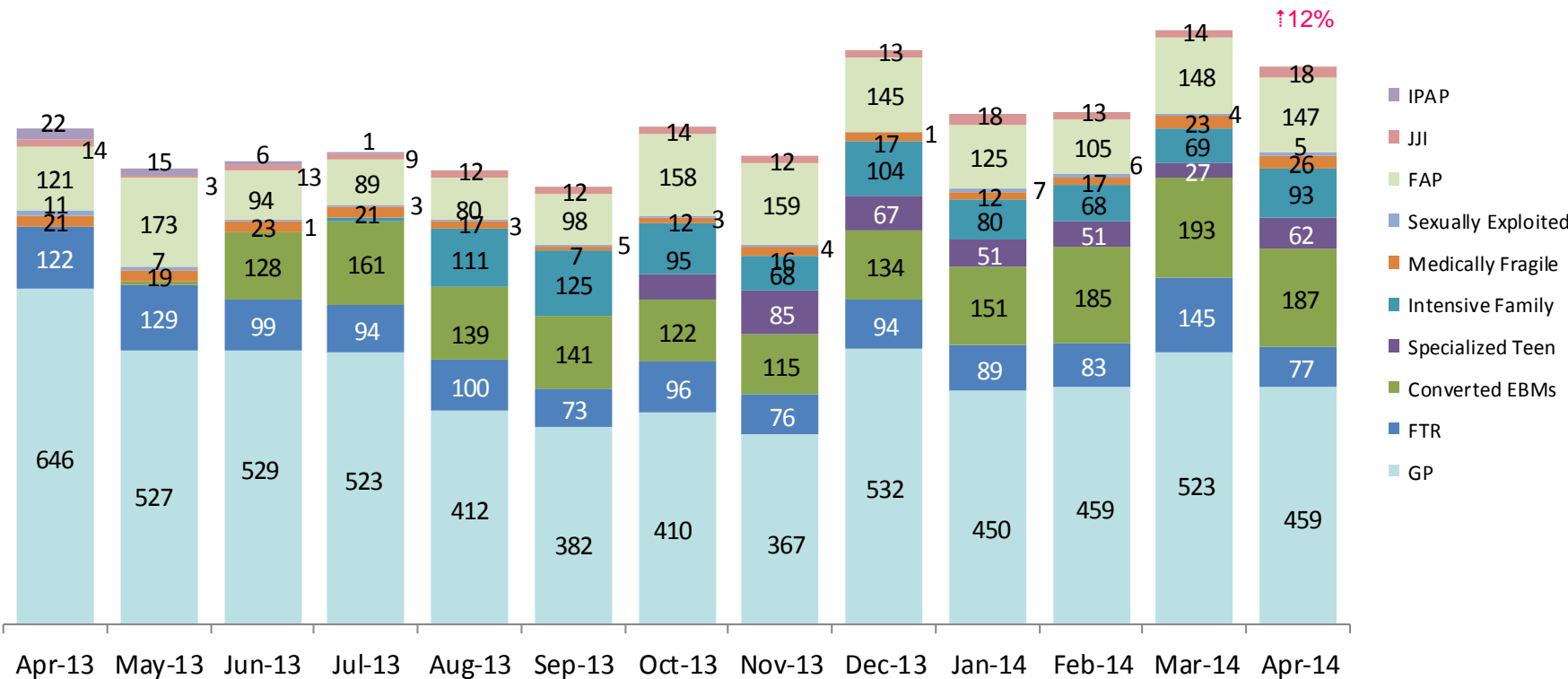
Notes: 1) During February - June 2011 FRP rates were adjusted by excluding programs in the process of being closed. FT/R rates were also adjusted during July – September 2011 by excluding newly opened programs. As of October 2011 all FT/R programs are included in the FT/R utilization rates. 2) Beginning July 2011 Family Treatment Rehabilitation programs replaced the Family Rehabilitation programs. 3) Beginning December 2011 the NYF Family Services for deaf Children and Adults program is no longer included in the medically fragile utilization rate. 4) During June -October 2013 FTR programs in the process of converting to EBMs were excluded from the FTR utilization statistics. 5) Percentage change is April 2013 vs. April 2014.

**New Preventive Cases\***  
January 2011 – April 2014



\*Notes: 1) New preventive cases do not include cases transferred from one preventive program to another. 2) Percentage change is April 2013 vs. April 2014. 3) See Pages 34 and 35 of the Appendix for supporting data.

New Preventive Cases\* by Program Type  
 April 2013 – April 2014



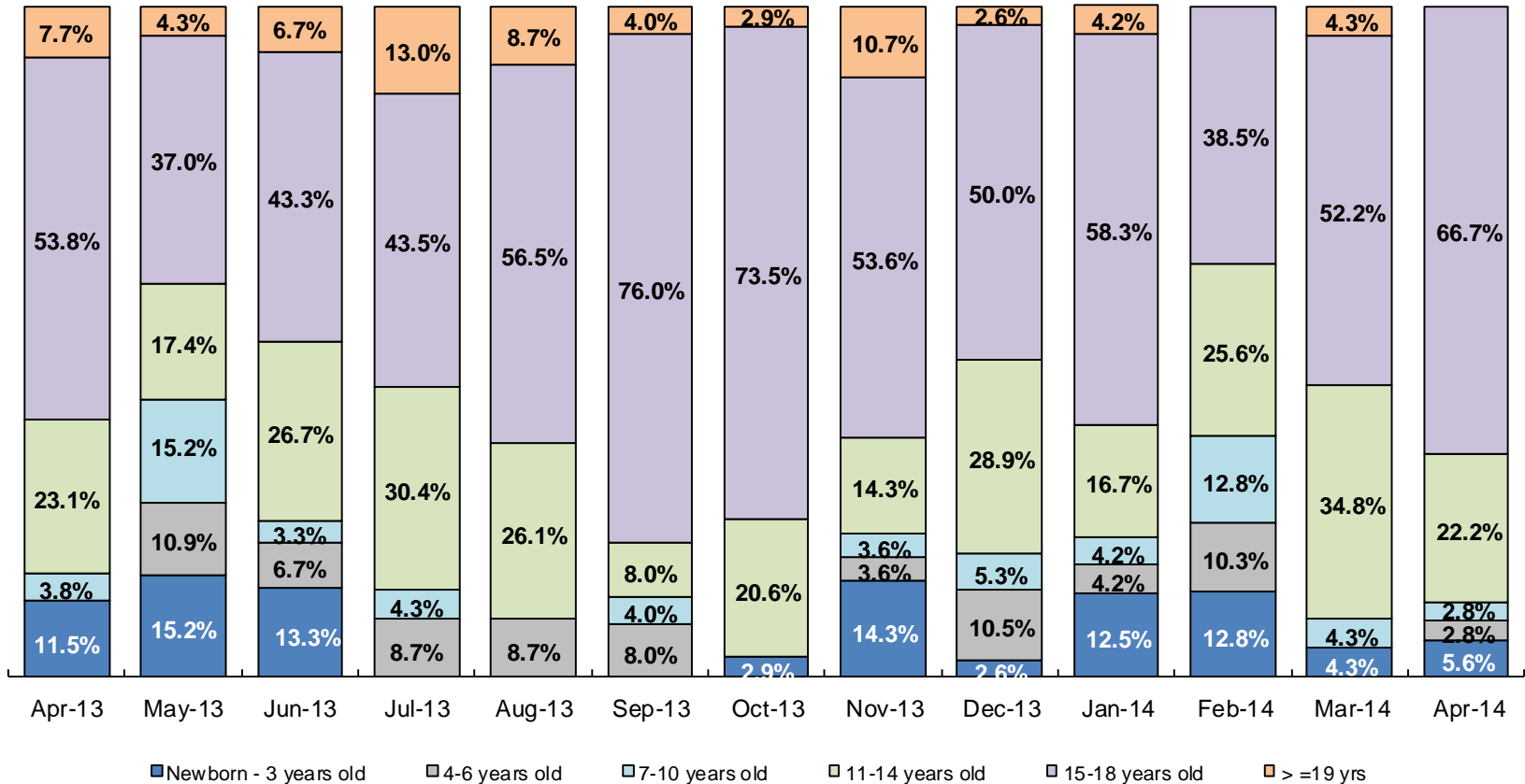
	Apr 2013	May 2013	Jun 2013	Jul 2013	Aug 2013	Sep 2013	Oct 2013	Nov 2013	Dec 2013	Jan 2014	Feb 2014	Mar 2014	Apr 2014
Number of New Preventive Cases	957	881	893	907	874	843	959	902	1,107	983	987	1,146	1,074

Notes: 1) New preventive cases do not include cases transferred from one preventive program to another. 2) Percentage change is April 2013 vs. April 2014.

### Children's Center Population by Age

April 2013 – April 2014

↑38%

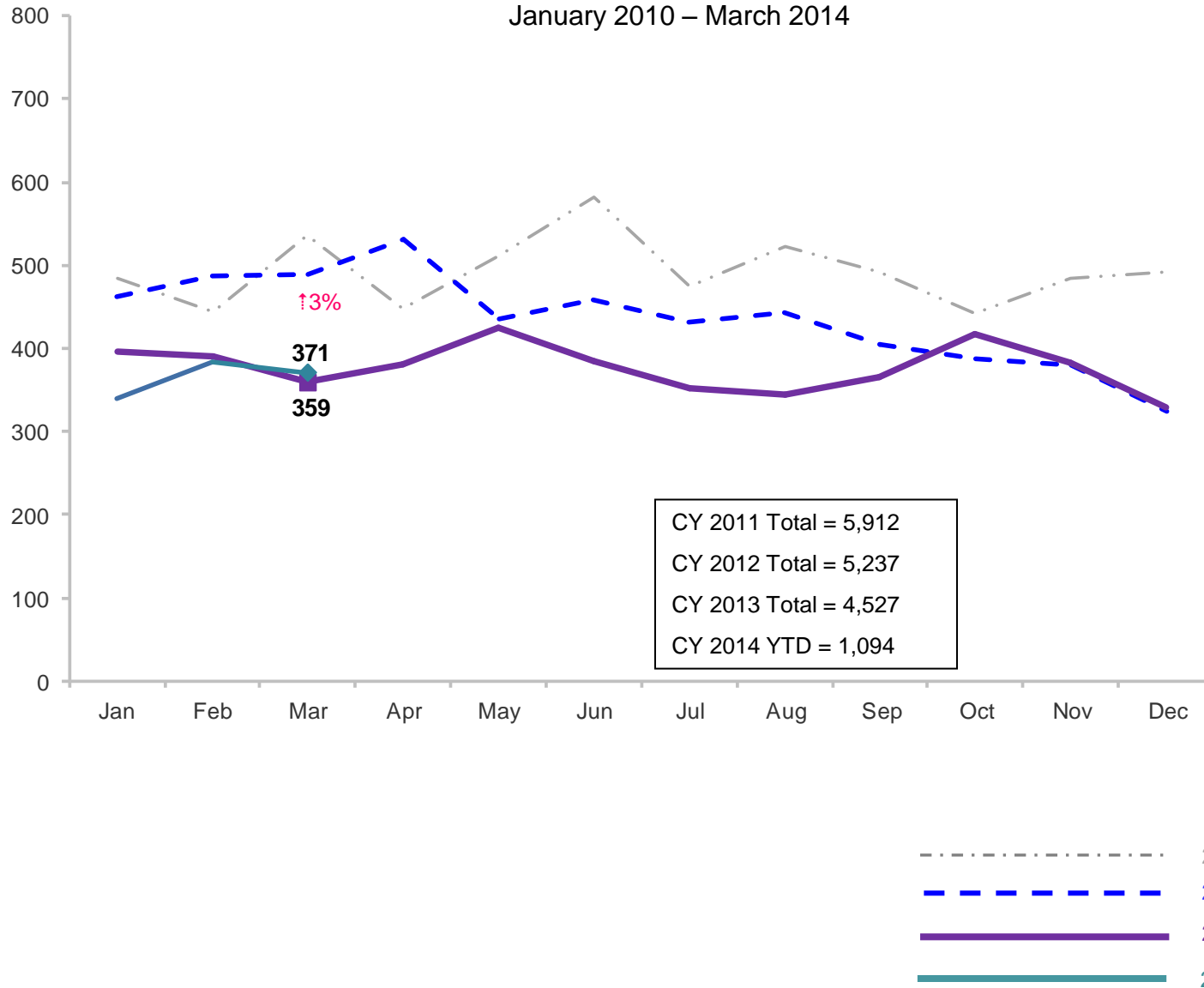


	Apr 2013	May 2013	Jun 2013	Jul 2013	Aug 2013	Sep 2013	Oct 2013	Nov 2013	Dec 2013	Jan 2014	Feb 2014	Mar 2014	Apr 2014
Number of Children	26	46	30	23	23	25	34	28	38	24	39	23	23

Note: Percentage change is April 2013 vs. April 2014.

### Total Monthly Placements

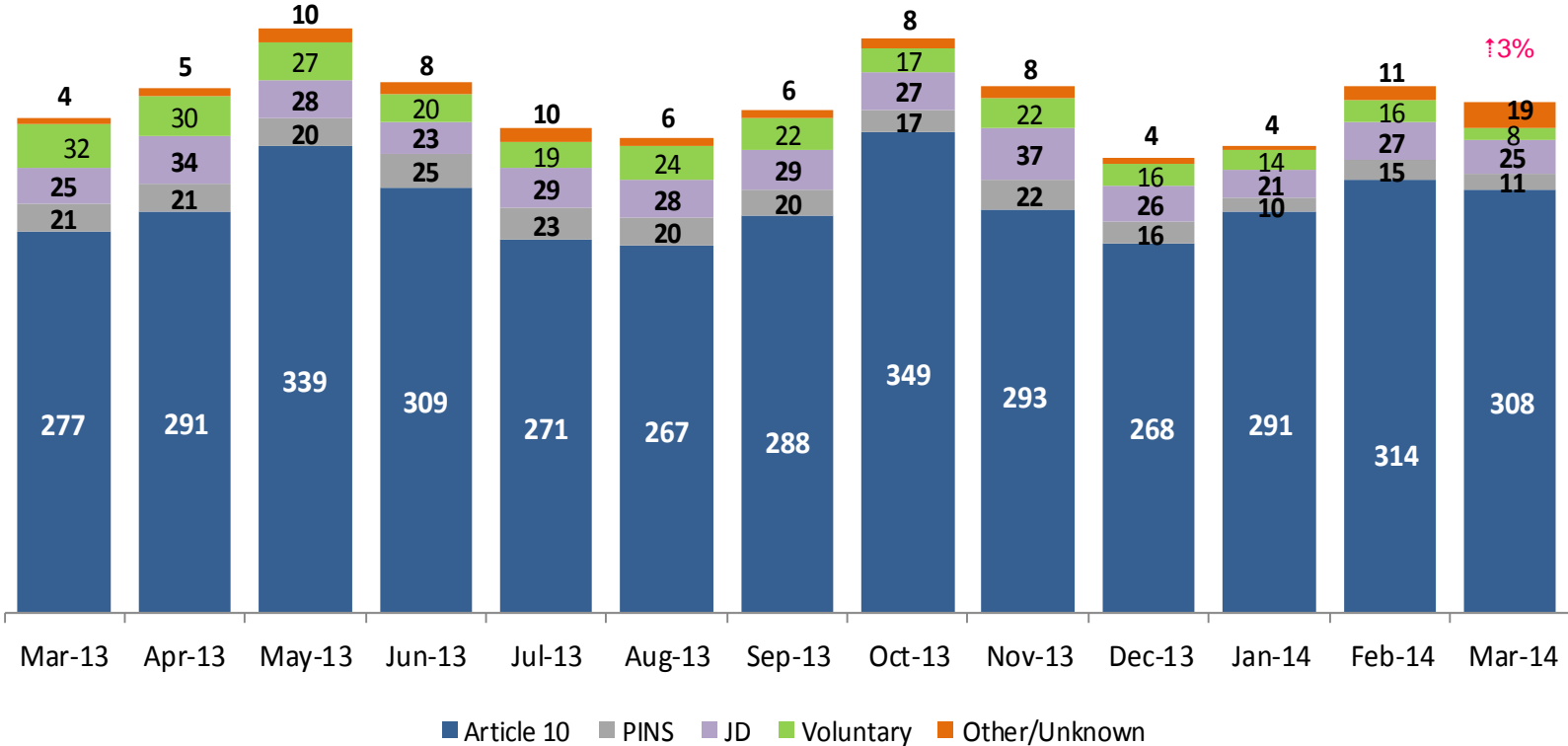
January 2010 – March 2014



Note: Percentage change is March 2013 vs. March 2014.

Reason for Initial Placements into Foster Care

March 2013 – March 2014



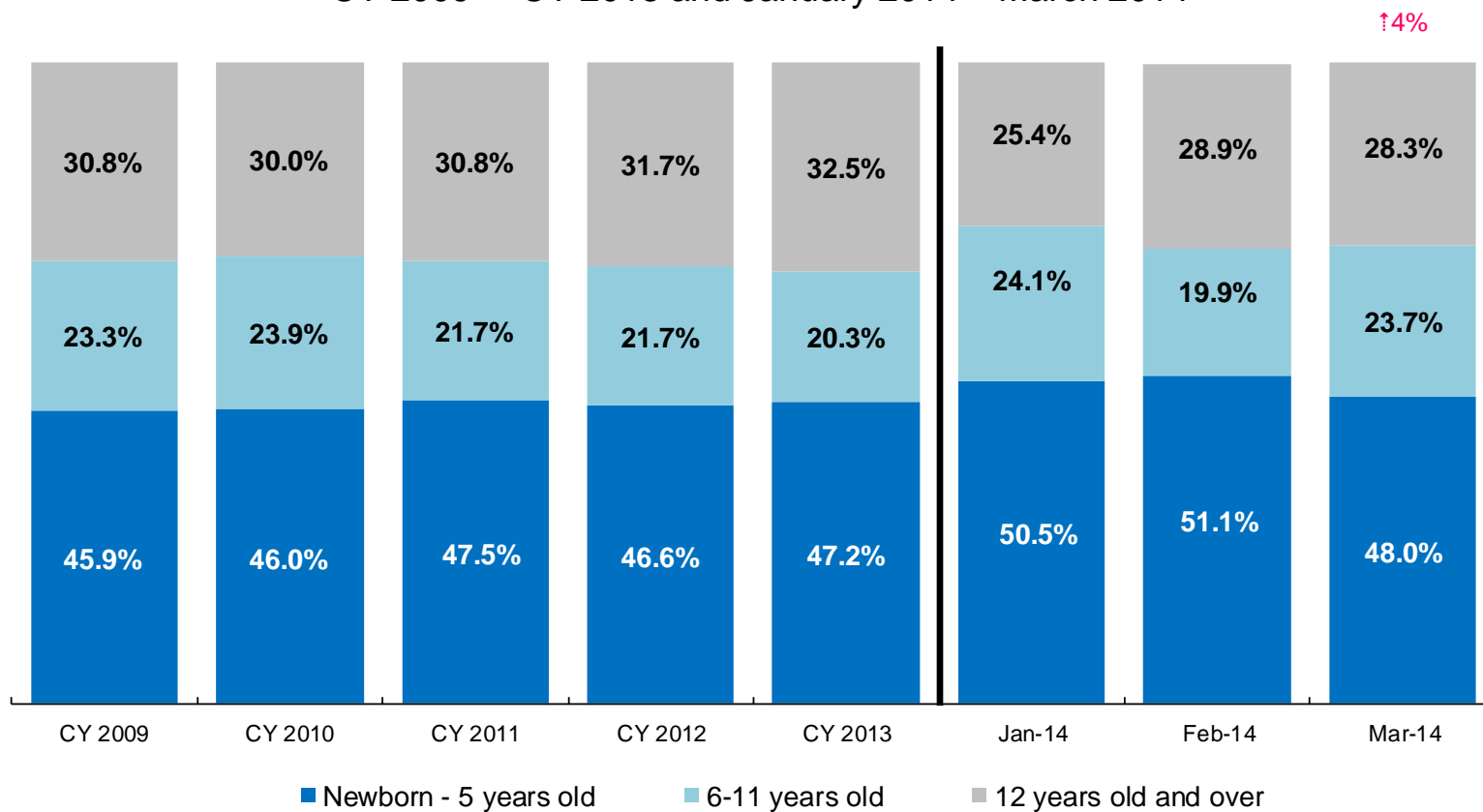
	Mar 2013	Apr 2013	May 2013	Jun 2013	Jul 2013	Aug 2013	Sep 2013	Oct 2013	Nov 2013	Dec 2013	Jan 2014	Feb 2014	Mar 2014
Number of Placements	359	381	424	385	352	345	365	418	382	330	340	383	371

Note: Percentage change is March 2013 vs. March 2014.



### Placements\* by Age

CY 2009 – CY 2013 and January 2014 – March 2014

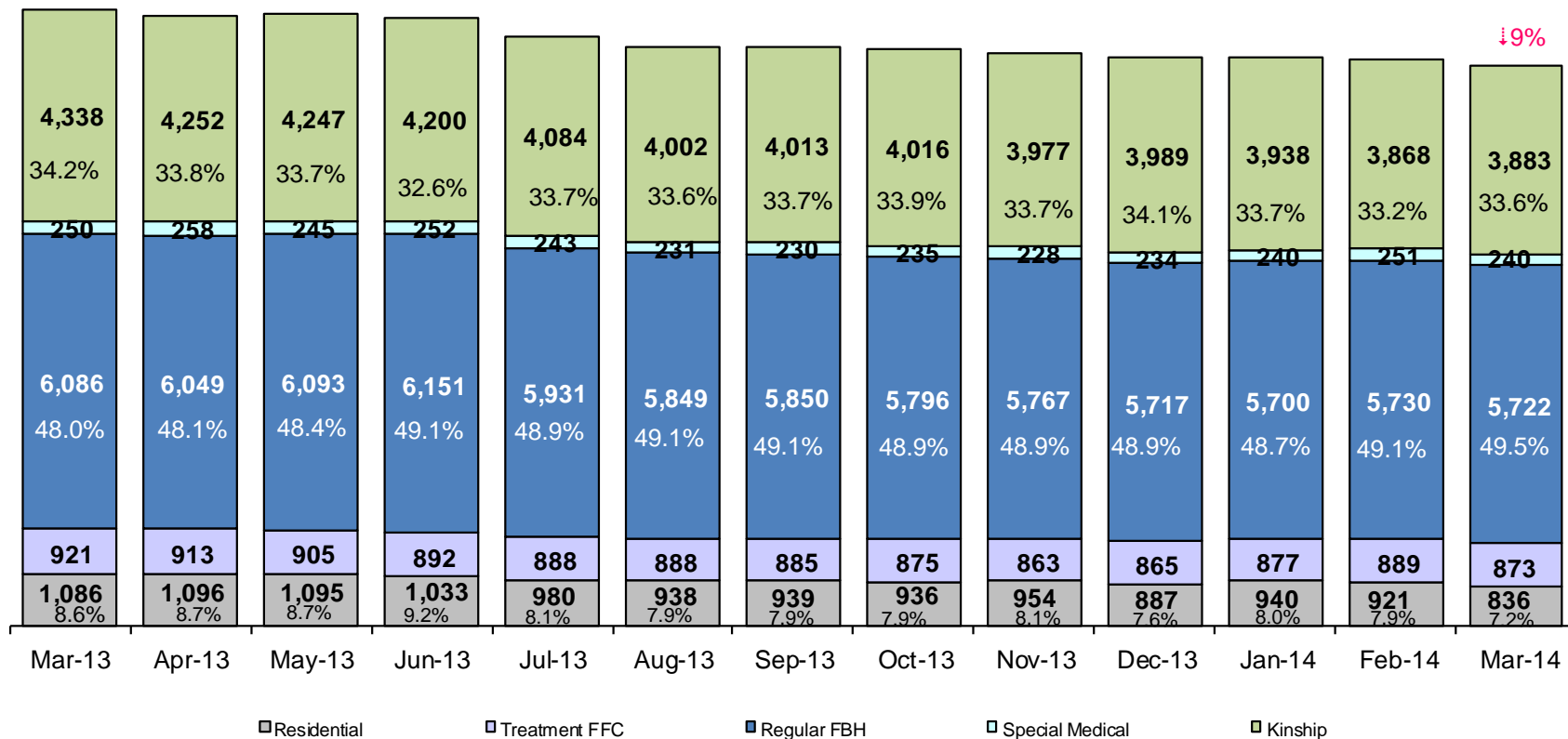


	CY 2008	CY 2009	CY 2010	CY 2011	CY 2012	CY 2013	Jan 2014	Feb 2014	Mar 2014
Placements	4,764	5,657	5,842	4,941	4,823	4,170	319	356	346

\*Excludes JD placements.

Note: Percentage change is March 2013 vs. March 2014.

### Children in Foster Care\* March 2013 – March 2014 (end of month)

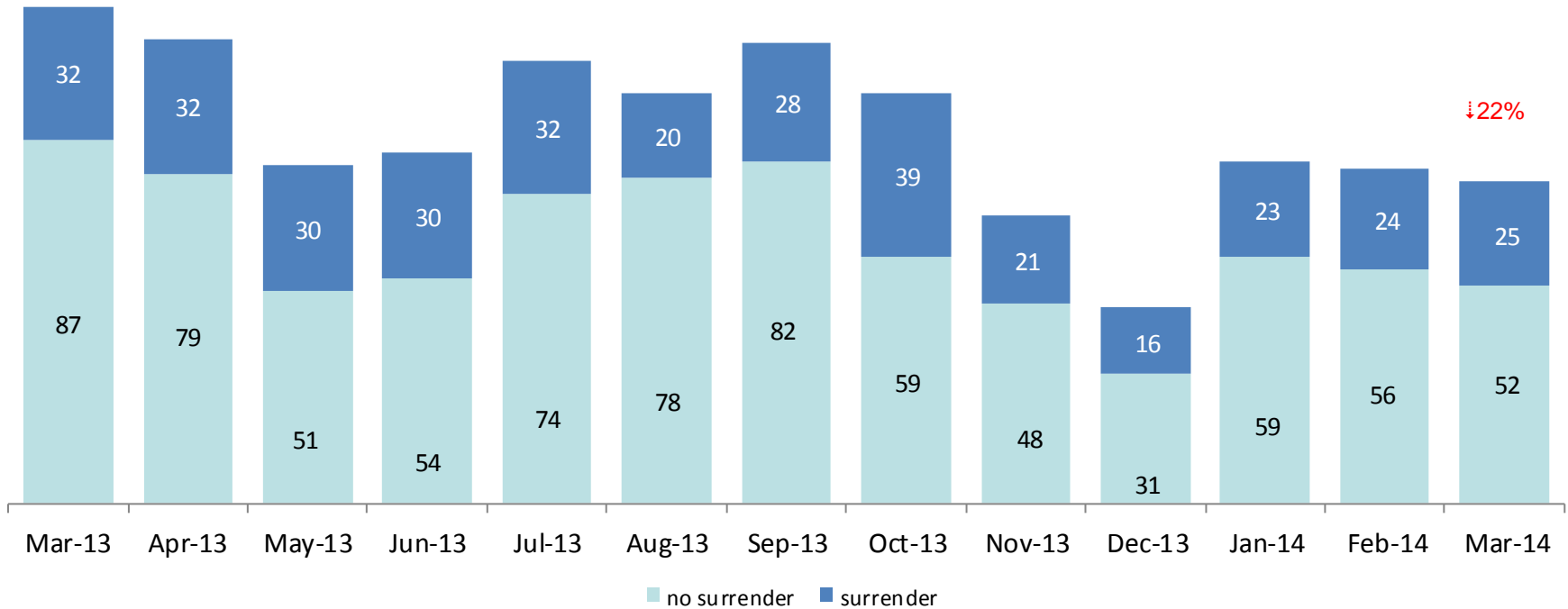


	Mar 2013	Apr 2013	May 2013	Jun 2013	Jul 2013	Aug 2013	Sep 2013	Oct 2013	Nov 2013	Dec 2013	Jan 2014	Feb 2014	Mar 2014
Number in Foster Care	12,681	12,568	12,585	12,528	12,126	11,908	11,917	11,858	11,789	11,692	11,695	11,659	11,554

\*Excludes JD placements and includes approximately 400 young children who are living in foster homes or residential care facilities with their mothers who are in foster care (8D children).

Note: Percentage change is March 2013 vs. March 2014.

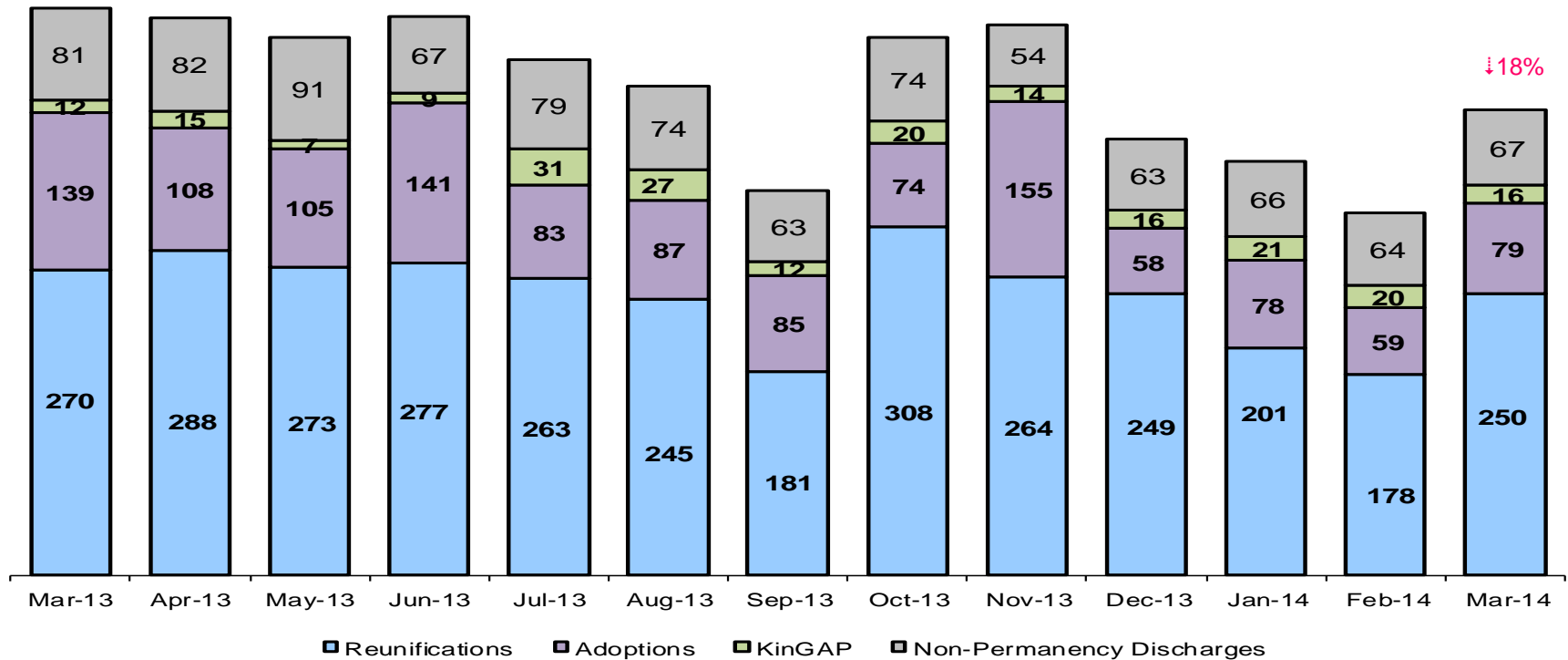
### Children Freed for Adoption, Surrender by at Least One Parent March 2013 – March 2014



	Mar 2013	Apr 2013	May 2013	Jun 2013	Jul 2013	Aug 2013	Sep 2013	Oct 2013	Nov 2013	Dec 2013	Jan 2014	Feb 2014	Mar 2014
Number Freed for Adoption	119	111	81	84	106	98	110	98	69	47	82	80	77

Note: Percentage change is for the number of children surrendered by at least on parent during March 2013 vs. March 2014.

### Permanency and Non-Permanency\* Discharges from Foster Care\*\* March 2013 – March 2014



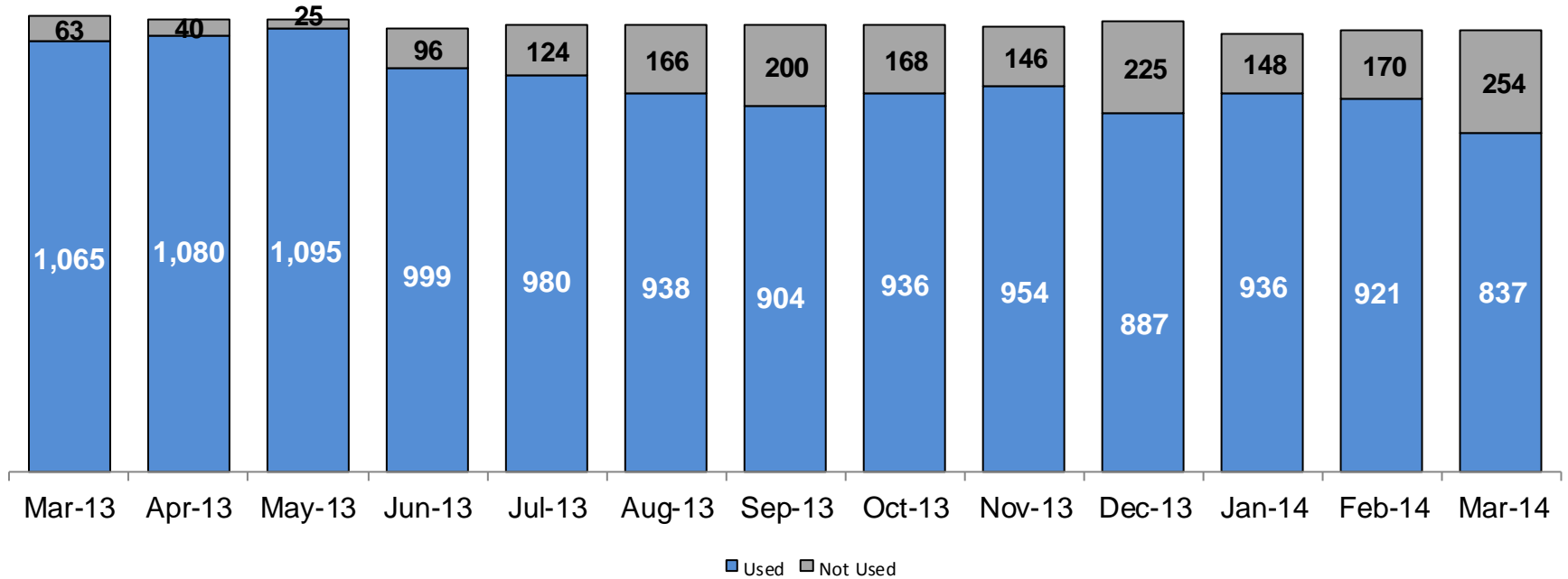
	Mar 2013	Apr 2013	May 2013	Jun 2013	Jul 2013	Aug 2013	Sep 2013	Oct 2013	Nov 2013	Dec 2013	Jan 2014	Feb 2014	Mar 2014
Number of Discharges	504	493	476	494	456	433	341	476	487	386	366	321	412

\*Non-permanency discharges include AWOL, APPLA as well as other discharge destinations such as mental institutions and correctional facilities and discharges with unspecified destinations.

\*\*Excludes discharges of youth who were in JD status at any time during their foster care spell.

Note: Percentage change is March 2013 vs. March 2014.

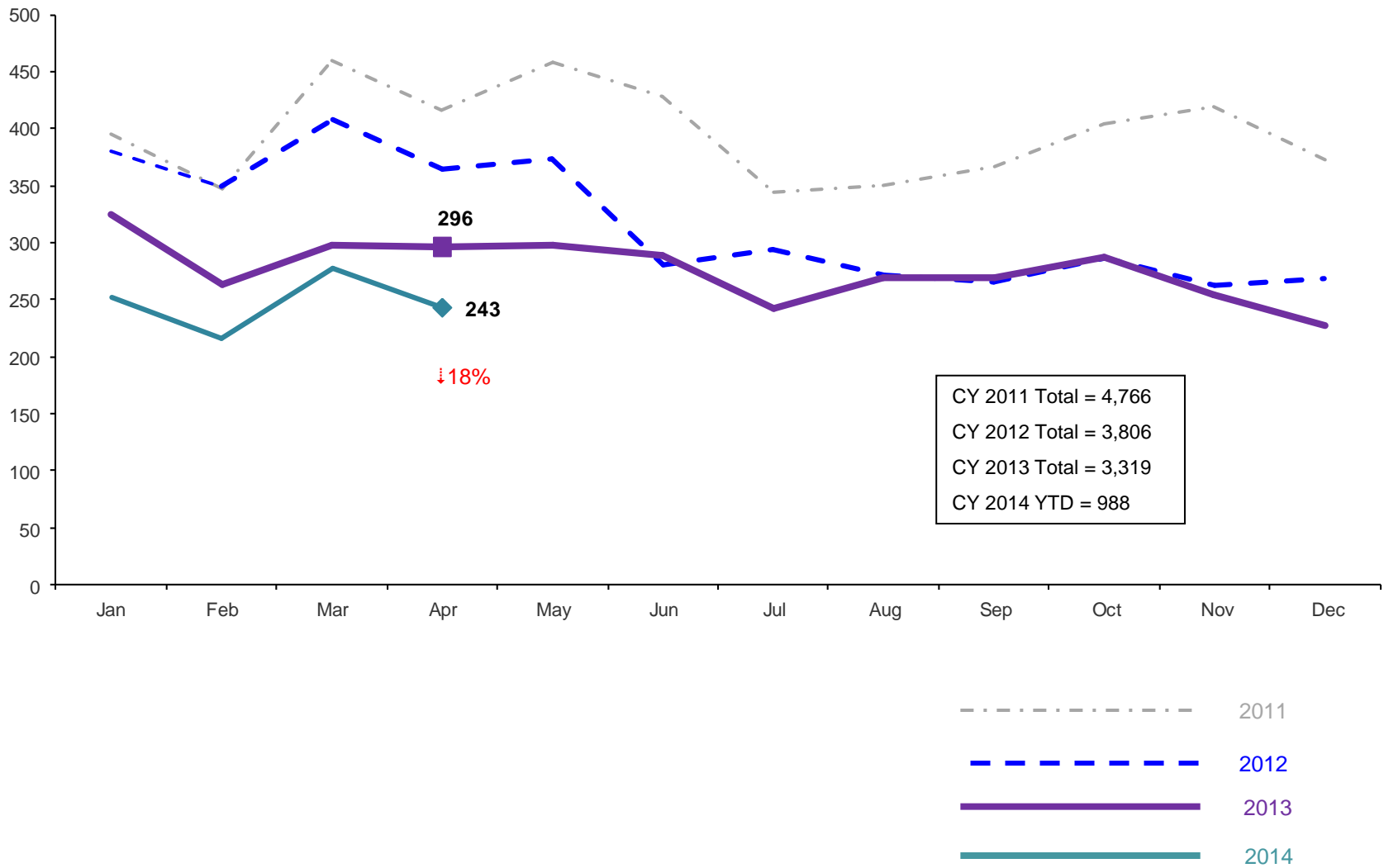
### Residential Care Capacity and Utilization, March 2013 – March 2014



	Mar 2013	Apr 2013	May 2013	Jun 2013	Jul 2013	Aug 2013	Sep 2013	Oct 2013	Nov 2013	Dec 2013	Jan 2014	Feb 2014	Mar 2014
Capacity	1,128	1,120	1,120	1,095	1,104	1,104	1,104	1,104	1,100	1,112	1,084	1,091	1,091

### Total Monthly Admissions to Detention

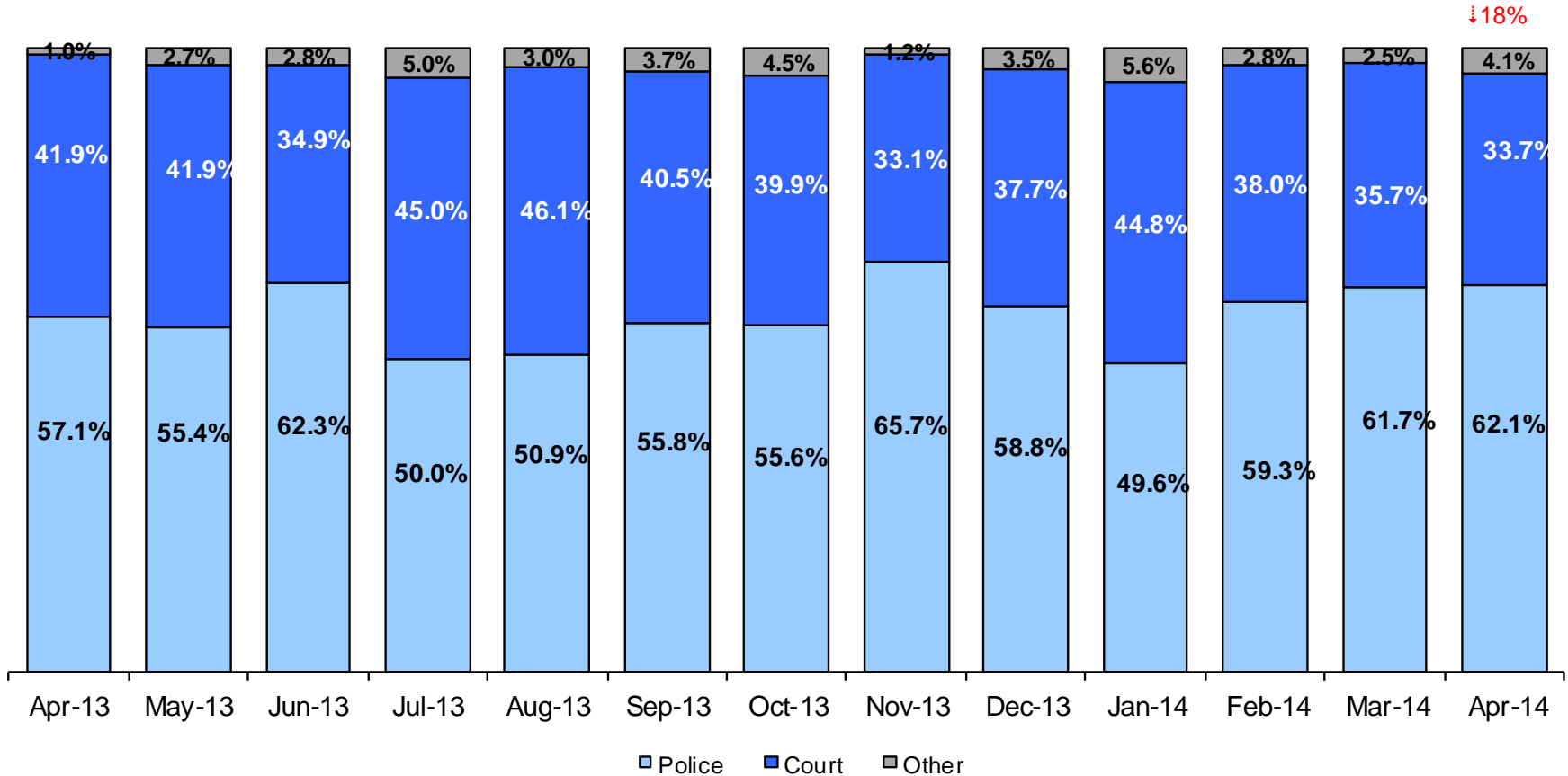
January 2011 – April 2014 (Monthly Total)



Note: Percentage change is April 2013 vs. April 2014.

### Admit Authority on Admissions

April 2013 - April 2014 (Monthly Total)



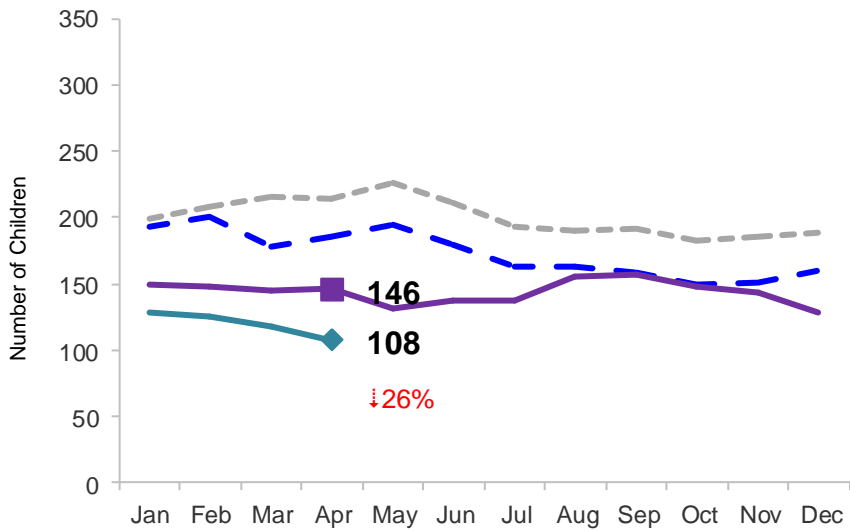
	Apr 2013	May 2013	Jun 2013	Jul 2013	Aug 2013	Sep 2013	Oct 2013	Nov 2013	Dec 2013	Jan 2014	Feb 2014	Mar 2014	Apr 2014
Number of Admissions	296	298	289	242	269	269	288	254	228	252	216	277	243

Notes: 1) Other Admit Authority includes the Sheriff Department, Department of Corrections and ACS. 2) Percentage change is April 2013 vs. April 2014.

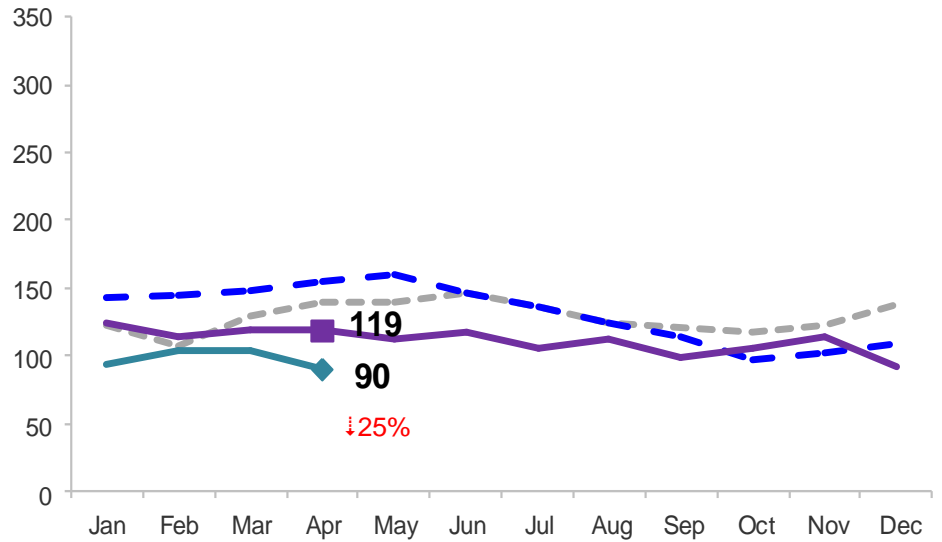
### Monthly Average Daily Population

January 2011 – April 2014

#### Secure Detention



#### Non-Secure Detention

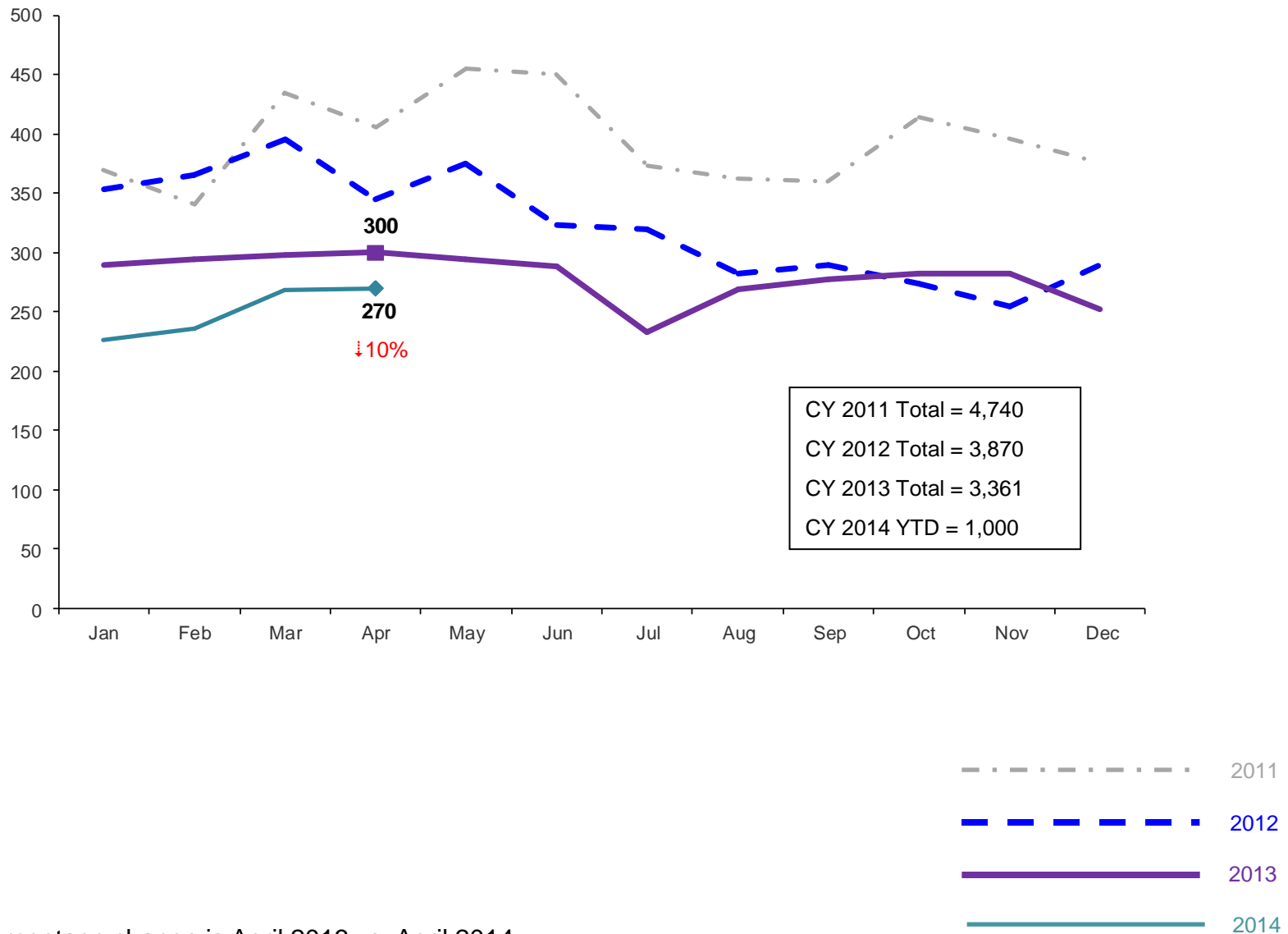


Note: Percentage change is April 2013 vs. April 2014.



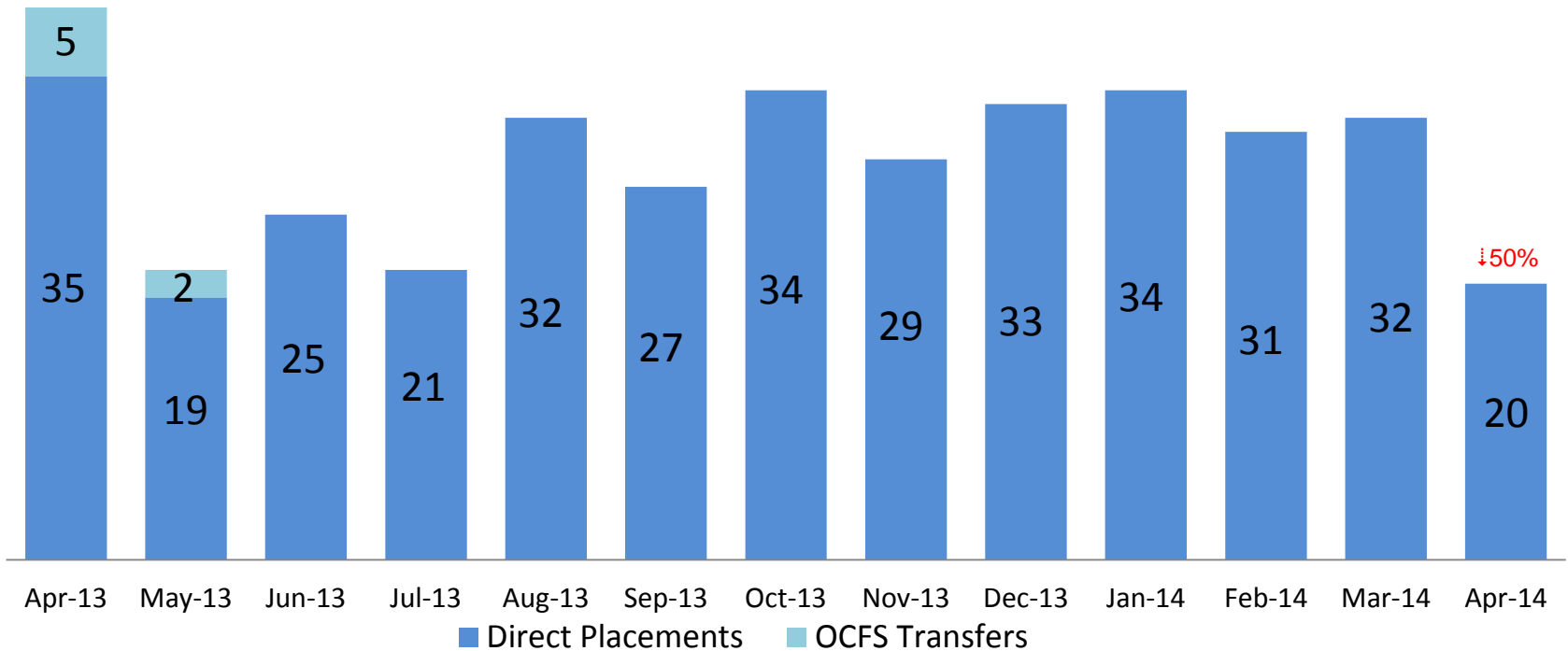
### Total Monthly Releases from Detention

January 2011 – April 2014 (Monthly Total)



Note: Percentage change is April 2013 vs. April 2014.

### ACS NSP Intakes April 2013 – April 2014

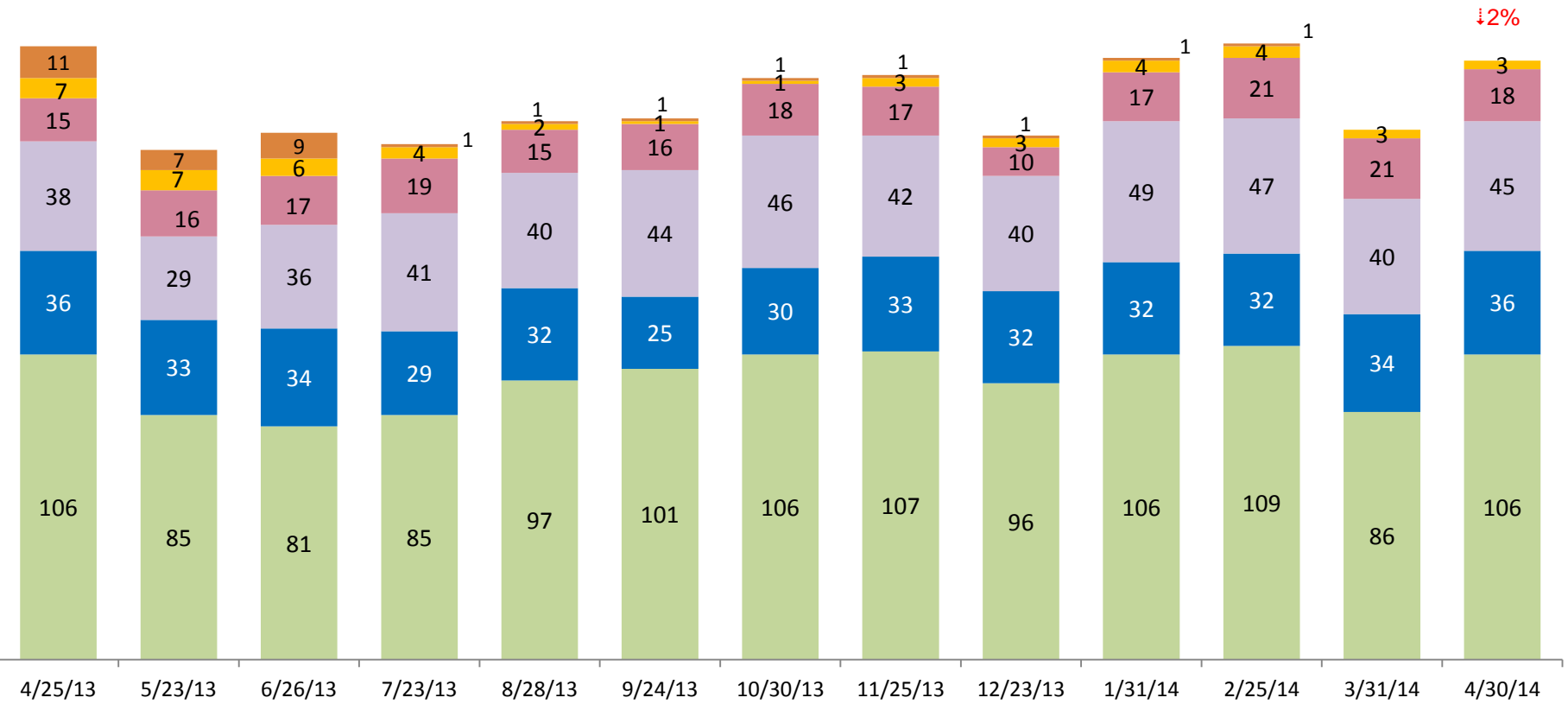


	Apr 2013	May 2013	Jun 2013	Jul 2013	Aug 2013	Sep 2013	Oct 2013	Nov 2013	Dec 2013	Jan 2014	Feb 2014	Mar 2014	Apr 2014
Number of Placements	40	21	25	21	32	27	34	29	33	34	31	32	20

Note: Percentage change is April 2013 vs. April 2014.

# ACS Non-Secure Placement, in 24 hour Care

April 2013 – April 2014 (Point-in-Time)



■ General, Male   
 ■ General, Female   
 ■ Specialized, Male   
 ■ Specialized, Female   
 ■ MTFC   
 ■ Other\*

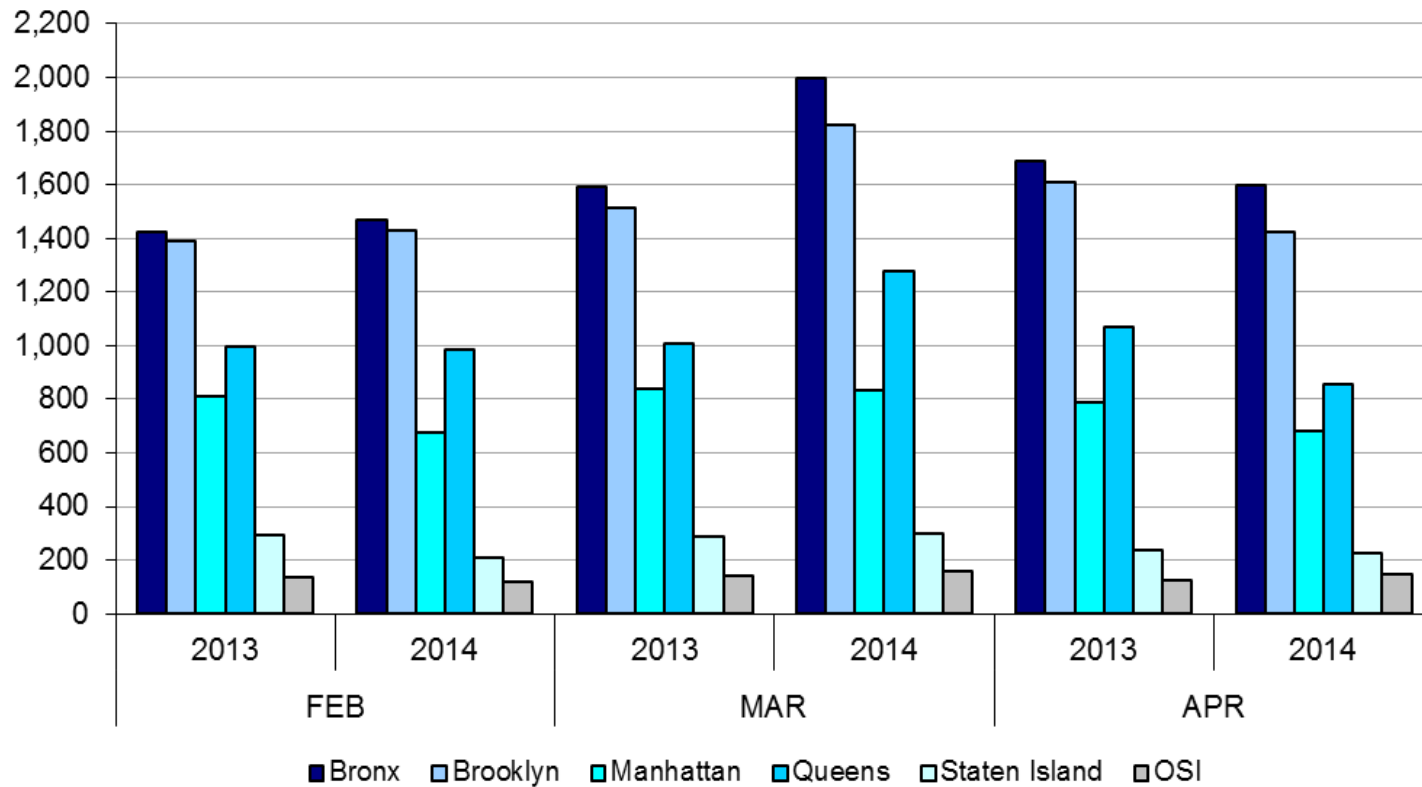
	4/25/13	5/23/13	6/26/13	7/23/13	8/28/13	9/24/13	10/30/13	11/25/13	12/23/13	1/31/14	2/25/14	3/31/14	4/30/14
Number in Placement	213	177	183	179	187	188	202	203	182	209	214	184	208

\*Other includes NYC youth in voluntary placements with Lincoln Hall, MercyFirst and Graham Windham.

Note: Percentage change is April 2013 vs. April 2014.

# Appendix

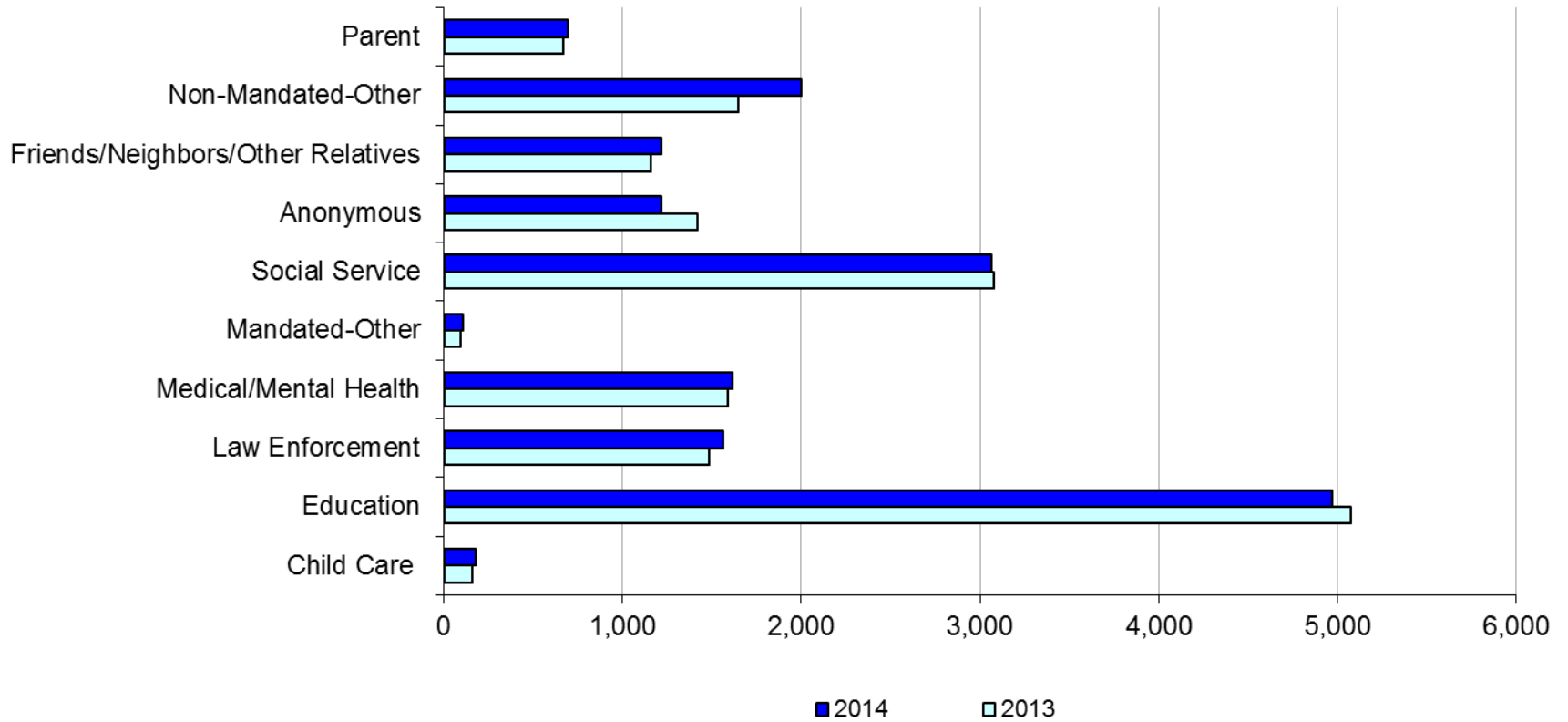
Figure 1: SCR Intakes by Borough, FEB 13 – APR 13 and FEB 14 – APR 14



**TABLE 1 - SCR Intake Changes by Borough, FEB 13 – APR 13 and FEB 14 – APR 14**

Month	Year	Bronx	Brooklyn	Manhattan	Queens	Staten Island	OSI	Other	Total
FEB	2013	1,426	1,388	809	995	292	137	138	5,185
	2014	1,470	1,432	676	985	210	120	125	5,018
	% Change	3.1%	3.2%	-16.4%	-1.0%	-28.1%	-12.4%	-9.4%	-3.2%
MAR	2013	1,591	1,516	841	1,008	287	142	121	5,506
	2014	2,000	1,821	834	1,276	297	161	135	6,524
	% Change	25.7%	20.1%	-0.8%	26.6%	3.5%	13.4%	11.6%	18.5%
APR	2013	1,689	1,609	788	1,070	236	123	160	5,675
	2014	1,598	1,424	684	856	225	148	142	5,077
	% Change	-5.4%	-11.5%	-13.2%	-20.0%	-4.7%	20.3%	-11.3%	-10.5%
Total	2013	4,706	4,513	2,438	3,073	815	402	419	16,366
	2014	5,068	4,677	2,194	3,117	732	429	402	16,619
	% Change	7.7%	3.6%	-10.0%	1.4%	-10.2%	6.7%	-4.1%	1.5%

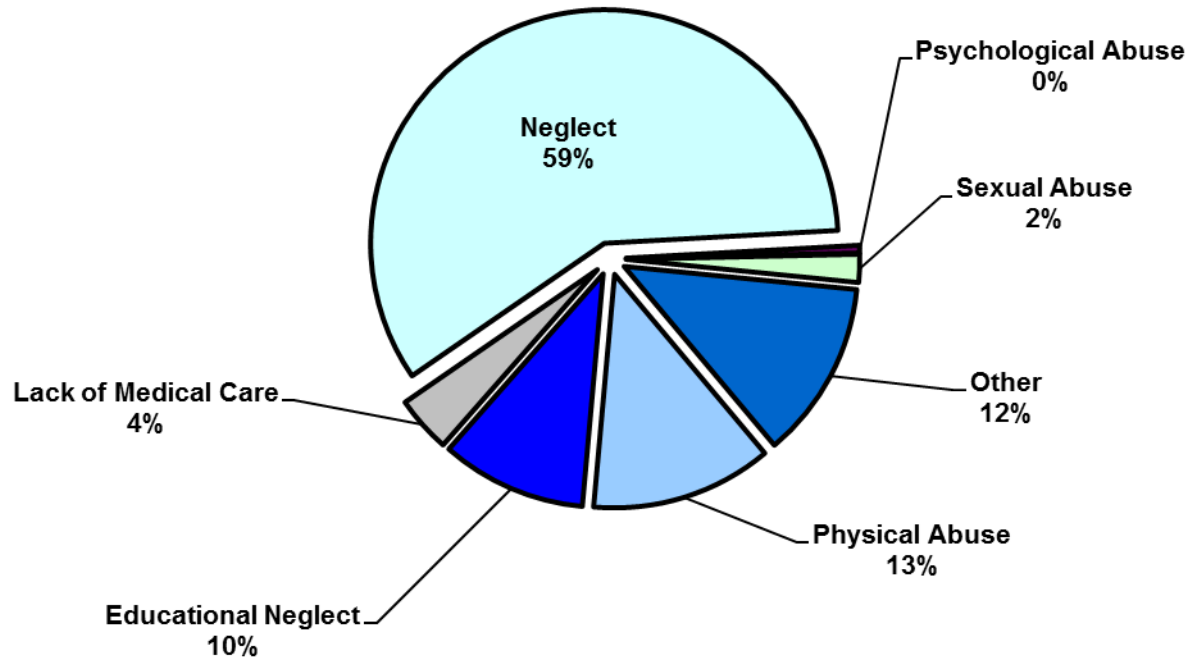
**Figure 2: Citywide SCR Intakes by Reporter Group, FEB 13 – APR 13 and FEB 14 – APR 14**



## TABLE 2 - SCR Intakes by Reporter Group, FEB 13 – APR 13 and FEB 14 – APR 14

Year	Child Care/ Substitute Care Personnel	Educational Personnel	Law Enforcement	Medical/ Mental Health Personnel	Mandated- Other	Social Service Personnel	Anonymous	Friends/ Neighbors/ Other Relatives	Non- Mandated- Other	Parent	Foster Parent	Total
<b>Bronx</b>												
2013	39	1,478	356	465	24	925	388	311	538	179	1	4,704
2014	55	1,569	411	490	30	994	352	374	587	207	0	5,069
% Change	41.0%	6.2%	15.4%	5.4%	25.0%	7.5%	-9.3%	20.3%	9.1%	15.6%	--	7.8%
<b>Brooklyn</b>												
2013	45	1,448	417	400	23	765	425	377	429	182	0	4,511
2014	39	1,463	427	420	29	811	371	359	578	180	0	4,677
% Change	-13.3%	1.0%	2.4%	5.0%	26.1%	6.0%	-12.7%	-4.8%	34.7%	-1.1%	--	3.7%
<b>Manhattan</b>												
2013	27	666	282	240	16	488	209	169	252	86	2	2,437
2014	28	529	276	234	11	420	157	162	303	74	0	2,194
% Change	3.7%	-20.6%	-2.1%	-2.5%	-31.3%	-13.9%	-24.9%	-4.1%	20.2%	-14.0%	-100.0%	-10.0%
<b>Queens</b>												
2013	15	1,065	274	291	11	601	258	189	249	120	1	3,074
2014	21	1,082	276	296	22	536	222	219	319	122	2	3,117
% Change	40.0%	1.6%	0.7%	1.7%	100.0%	-10.8%	-14.0%	15.9%	28.1%	1.7%	100.0%	1.4%
<b>Staten Island</b>												
2013	4	325	54	84	6	100	94	65	53	30	0	815
2014	8	234	62	76	2	112	67	62	71	37	1	732
% Change	100.0%	-28.0%	14.8%	-9.5%	-66.7%	12.0%	-28.7%	-4.6%	34.0%	23.3%	--	-10.2%
<b>OSI</b>												
2013	19	46	17	50	10	75	30	13	98	44	0	402
2014	23	43	23	55	9	82	28	20	101	44	1	429
% Change	21.1%	-6.5%	35.3%	10.0%	-10.0%	9.3%	-6.7%	53.8%	3.1%	0.0%	--	6.7%
<b>Other</b>												
2013	11	49	85	60	2	125	14	33	28	26	0	433
2014	4	52	87	41	3	109	21	19	39	33	0	408
% Change	-63.6%	6.1%	2.4%	-31.7%	50.0%	-12.8%	50.0%	-42.4%	39.3%	26.9%	--	-5.8%
<b>Citywide</b>												
2013	160	5,077	1,485	1,590	92	3,079	1,418	1,157	1,647	667	4	16,376
2014	178	4,972	1,562	1,612	106	3,064	1,218	1,215	1,998	697	4	16,626
% Change	11.3%	-2.1%	5.2%	1.4%	15.2%	-0.5%	-14.1%	5.0%	21.3%	4.5%	0.0%	1.5%

**Figure 3: SCR Allegations, FEB 14 – APR 14**



Total Allegations = 40,829



**TABLE 3 - SCR Allegations, FEB 13 - APR 13 and FEB 14 - APR 14**

Year	Physical Abuse	Educational Neglect	Lack of Medical Care	Neglect	Psychological Abuse	Sexual Abuse	Other	Total
<b>Bronx</b>								
2013	1,361	1,518	518	6,996	81	242	1,604	12,320
2014	1,454	1,446	526	7,317	64	199	1,585	12,591
% Change	6.8%	-4.7%	1.5%	4.6%	-21.0%	-17.8%	-1.2%	2.2%
<b>Brooklyn</b>								
2013	1,508	1,258	437	6,944	69	248	1,680	12,144
2014	1,471	1,256	454	6,958	50	243	1,351	11,783
% Change	-2.5%	-0.2%	3.9%	0.2%	-27.5%	-2.0%	-19.6%	-3.0%
<b>Manhattan</b>								
2013	596	568	226	2965	44	102	665	5,166
2014	539	442	195	2725	16	80	556	4,553
% Change	-9.6%	-22.2%	-13.7%	-8.1%	-63.6%	-21.6%	-16.4%	-11.9%
<b>Queens</b>								
2013	1,155	571	252	4,249	58	185	933	7,403
2014	1,122	607	256	4,208	57	146	906	7,302
% Change	-2.9%	6.3%	1.6%	-1.0%	-1.7%	-21.1%	-2.9%	-1.4%
<b>Staten Island</b>								
2013	274	212	66	1,170	25	28	298	2,073
2014	181	149	60	1,050	6	27	299	1,772
% Change	-33.9%	-29.7%	-9.1%	-10.3%	-76.0%	-3.6%	0.3%	-14.5%
<b>OSI</b>								
2013	253	51	58	1,095	12	52	184	1,705
2014	269	51	66	1,101	10	57	143	1,697
% Change	6.3%	0.0%	13.8%	0.5%	-16.7%	9.6%	-22.3%	-0.5%
<b>Other</b>								
2013	122	130	57	720	3	33	213	1,278
2014	84	153	38	622	12	37	185	1,131
% Change	-31.1%	17.7%	-33.3%	-13.6%	300.0%	12.1%	-13.1%	-11.5%
<b>Citywide</b>								
2013	5,269	4,308	1,614	24,139	292	890	5,577	42,089
2014	5,120	4,104	1,595	23,981	215	789	5,025	40,829
% Change	-2.8%	-4.7%	-1.2%	-0.7%	-26.4%	-11.3%	-9.9%	-3.0%

TABLE 4 - Purchased Preventive Cases Opened and Closed  
January 2012 to April 2014

Month	Opened Cases	Closed Cases
<b>2012</b>		
Jan-12	870	629
Feb-12	889	835
Mar-12	944	991
Apr-12	997	870
May-12	1,117	979
Jun-12	965	869
Jul-12	853	979
Aug-12	917	1,007
Sep-12	727	900
Oct-12	875	915
Nov-12	738	702
Dec-12	938	871
<b>2013</b>		
Jan-13	960	884
Feb-13	873	916
Mar-13	962	1,171
Apr-13	940	988
May-13	864	1,337
Jun-13	863	780
Jul-13	868	1,004
Aug-13	802	1,084
Sep-13	844	724
Oct-13	933	765
Nov-13	901	685
Dec-13	1,106	552
<b>2014</b>		
Jan-14	983	640
Feb-14	987	679
Mar-14	1,146	874
Apr-14	1,074	896

**Table 5 - Referrals to Purchased Preventive Services by Source  
January 2012 to April 2014**

Month	Total Referrals	Division of Child Protection	Foster Care Agencies	PPRS Transfer	School	Self	Other Sources*
<b>2012</b>							
Jan-12	1,431	66.5%	0.7%	8.5%	3.6%	3.8%	17.0%
Feb-12	1,043	78.2%	1.1%	9.0%	1.9%	6.7%	3.1%
Mar-12	1,525	73.6%	0.9%	6.0%	1.8%	3.9%	13.8%
Apr-12	1,370	72.8%	1.0%	9.4%	1.2%	4.2%	11.4%
May-12	1,463	70.9%	1.0%	7.6%	1.1%	4.4%	15.0%
Jun-12	1,279	73.8%	0.5%	5.9%	1.0%	4.7%	14.2%
Jul-12	1,308	77.4%	1.2%	7.0%	0.3%	3.7%	10.5%
Aug-12	1,391	74.0%	0.9%	11.7%	0.3%	2.9%	10.2%
Sep-12	1,110	70.5%	1.9%	9.6%	1.2%	5.0%	11.9%
Oct-12	1,159	61.1%	1.4%	12.6%	2.7%	4.9%	17.3%
Nov-12	1,106	67.0%	1.0%	9.9%	2.2%	4.7%	15.3%
Dec-12	1,206	68.7%	0.8%	5.8%	2.7%	5.6%	16.4%
CY 2012	15,391	71.3%	1.0%	8.5%	1.6%	4.5%	13.1%
<b>2013</b>							
Jan-13	1,474	74.1%	1.2%	7.3%	1.2%	3.7%	12.5%
Feb-13	1,308	75.8%	1.1%	8.0%	1.6%	2.9%	10.6%
Mar-13	1,270	73.5%	1.2%	6.7%	2.4%	3.9%	12.3%
Apr-13	1,421	77.9%	0.8%	7.4%	0.9%	3.0%	10.1%
May-13	1,320	68.4%	0.5%	10.2%	1.5%	3.8%	15.5%
Jun-13	953	69.2%	1.2%	9.4%	2.6%	5.0%	12.6%
Jul-13	1,014	66.3%	1.9%	14.4%	1.6%	3.9%	11.9%
Aug-13	1,212	70.5%	0.7%	11.8%	0.7%	4.7%	11.6%
Sep-13	1,262	64.0%	2.1%	11.3%	1.7%	6.7%	14.2%
Oct-13	1,319	61.0%	1.1%	9.0%	2.9%	7.5%	18.5%
Nov-13	1,249	55.9%	1.6%	10.5%	4.6%	9.2%	18.3%
Dec-13	1,464	62.2%	1.2%	8.2%	2.3%	9.2%	17.0%
<b>2014</b>							
Jan-14	1,537	70.0%	1.2%	6.6%	2.3%	5.8%	14.2%
Feb-14	1,334	69.7%	0.8%	8.4%	1.7%	5.5%	13.9%
Mar-14	1,612	70.0%	1.4%	8.6%	1.6%	5.3%	13.1%
Apr-14	1,525	70.2%	0.9%	7.6%	2.1%	3.7%	15.4%

\*Other Community Sources includes the Department of Homeless Services, Family Court, FAP, Hospitals and Medical facilities, the NYC Housing Authority, PINS/DAS, Probation, and Sponsor Agencies.