

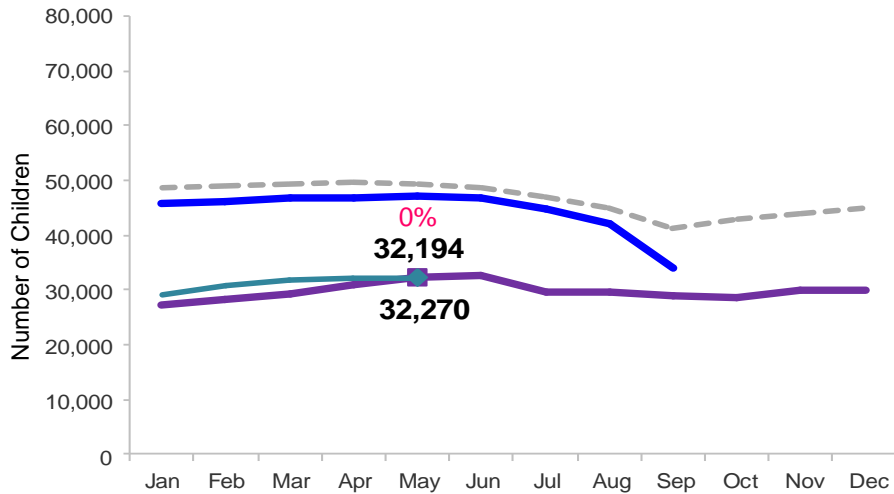


# Flash

June 2014

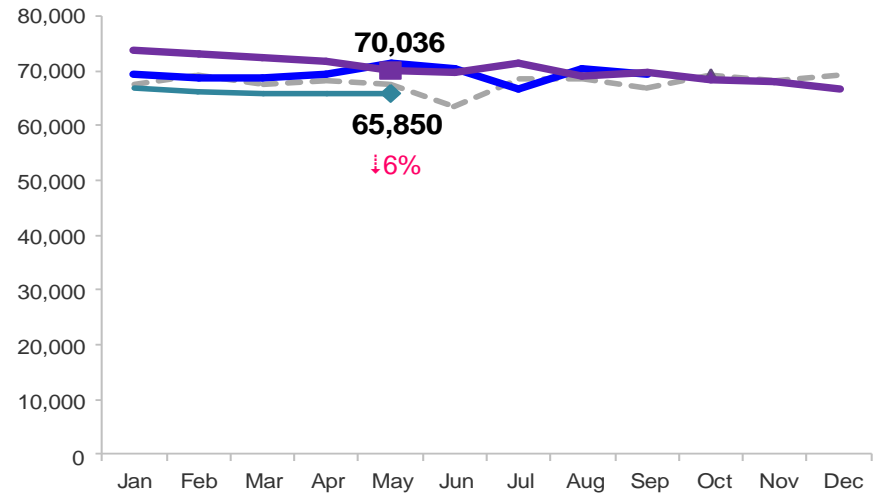
## Children Enrolled in Contracted Early Learn Programs

January 2011 – May 2014 (End of Month)



## Children Using Vouchers for Child Care

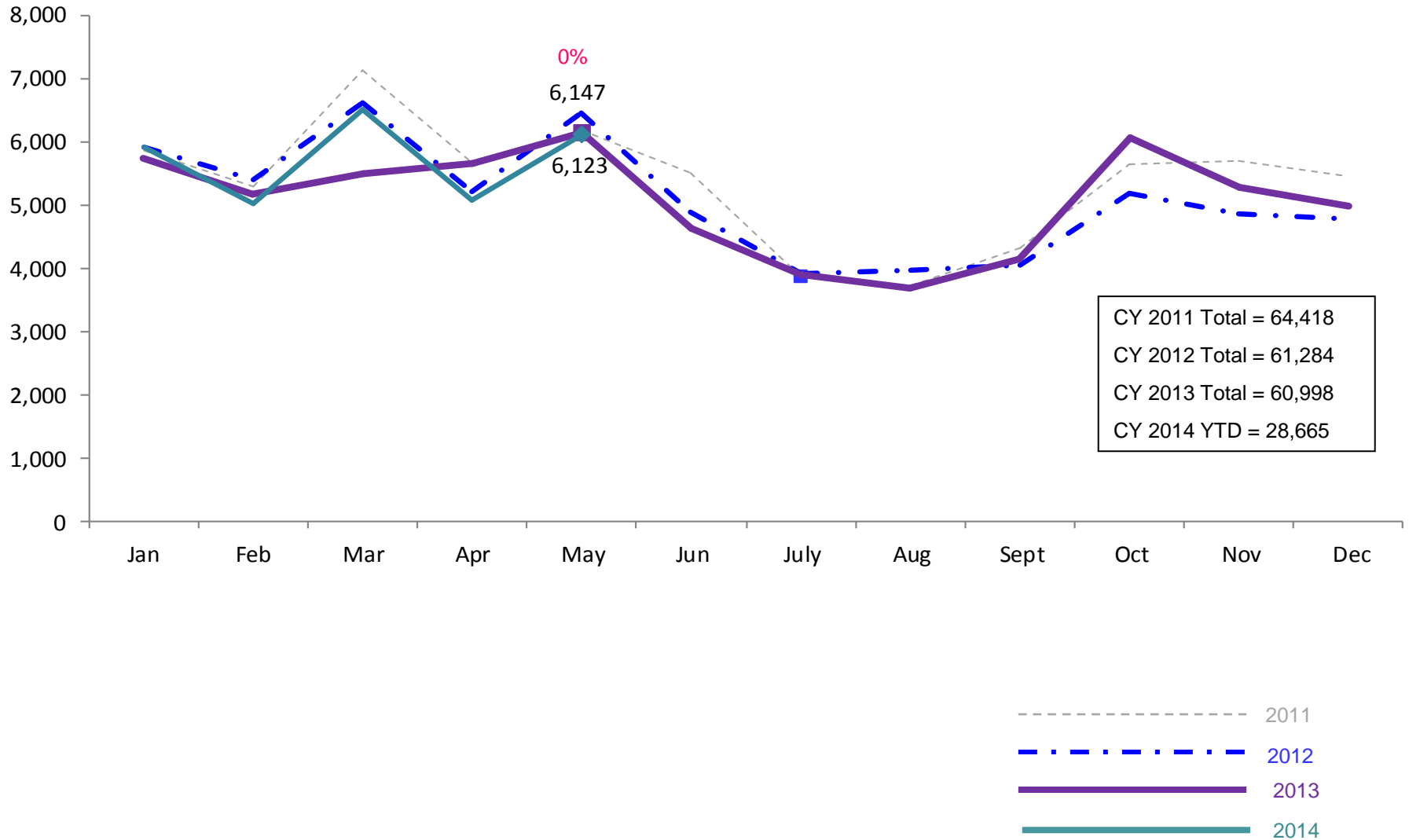
January 2011 – May 2014 (End of Month)



Notes: 1) Beginning October 1, 2012 ACS converted its early care and education system to a new model, Early Learn NYC. Enrollment data for the transitional months of October – December 2012 are not available because contractors were in the midst of implementing the data collection systems. 2) Percentage change is May 2013 vs. May 2014.

### SCR Intakes

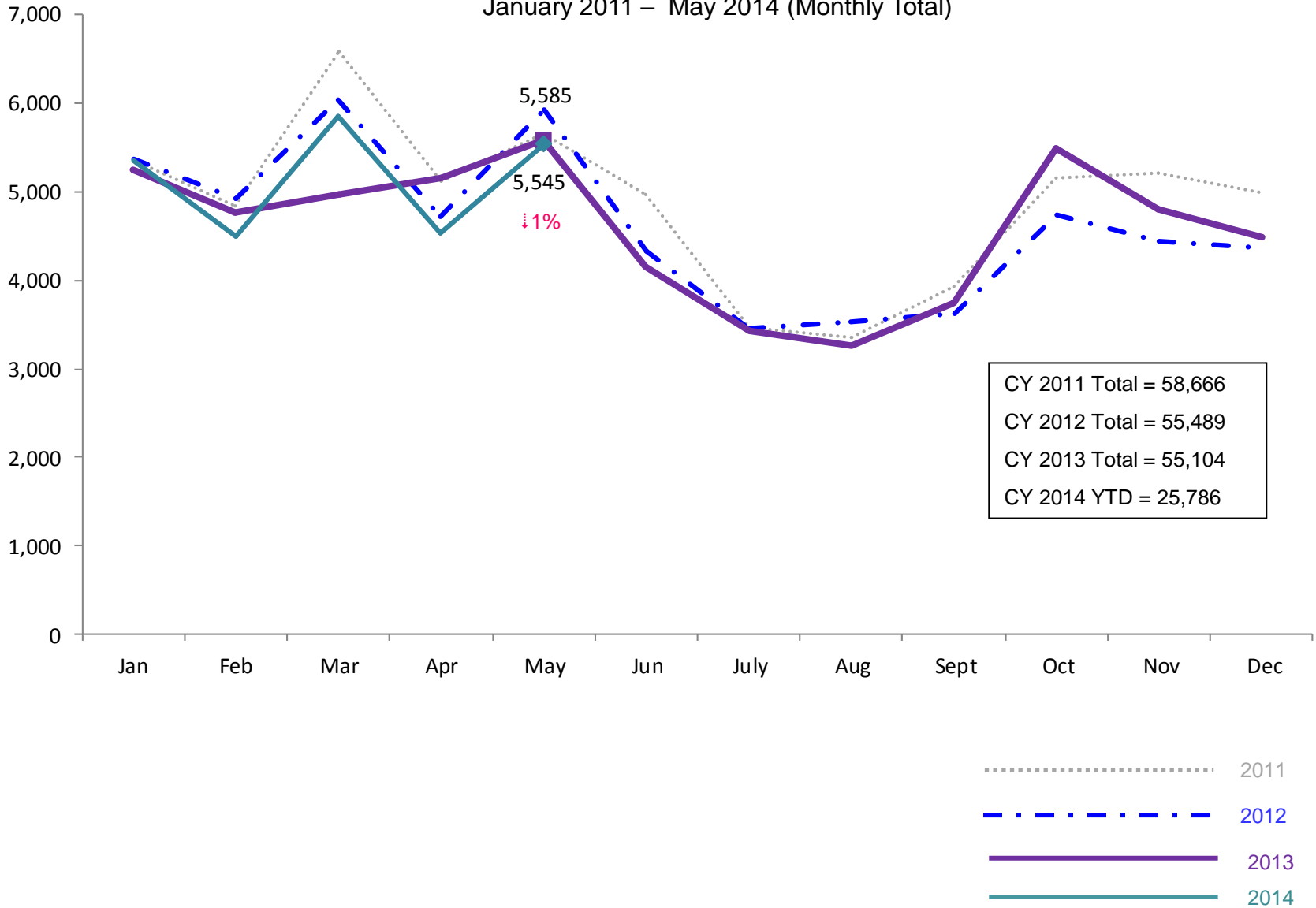
January 2011 – May 2014 (Monthly Total)



Note: Percentage change is May 2013 vs. May 2014.  
 See Pages 28 through 33 of the Appendix for supporting data.

### SCR Consolidated Investigations

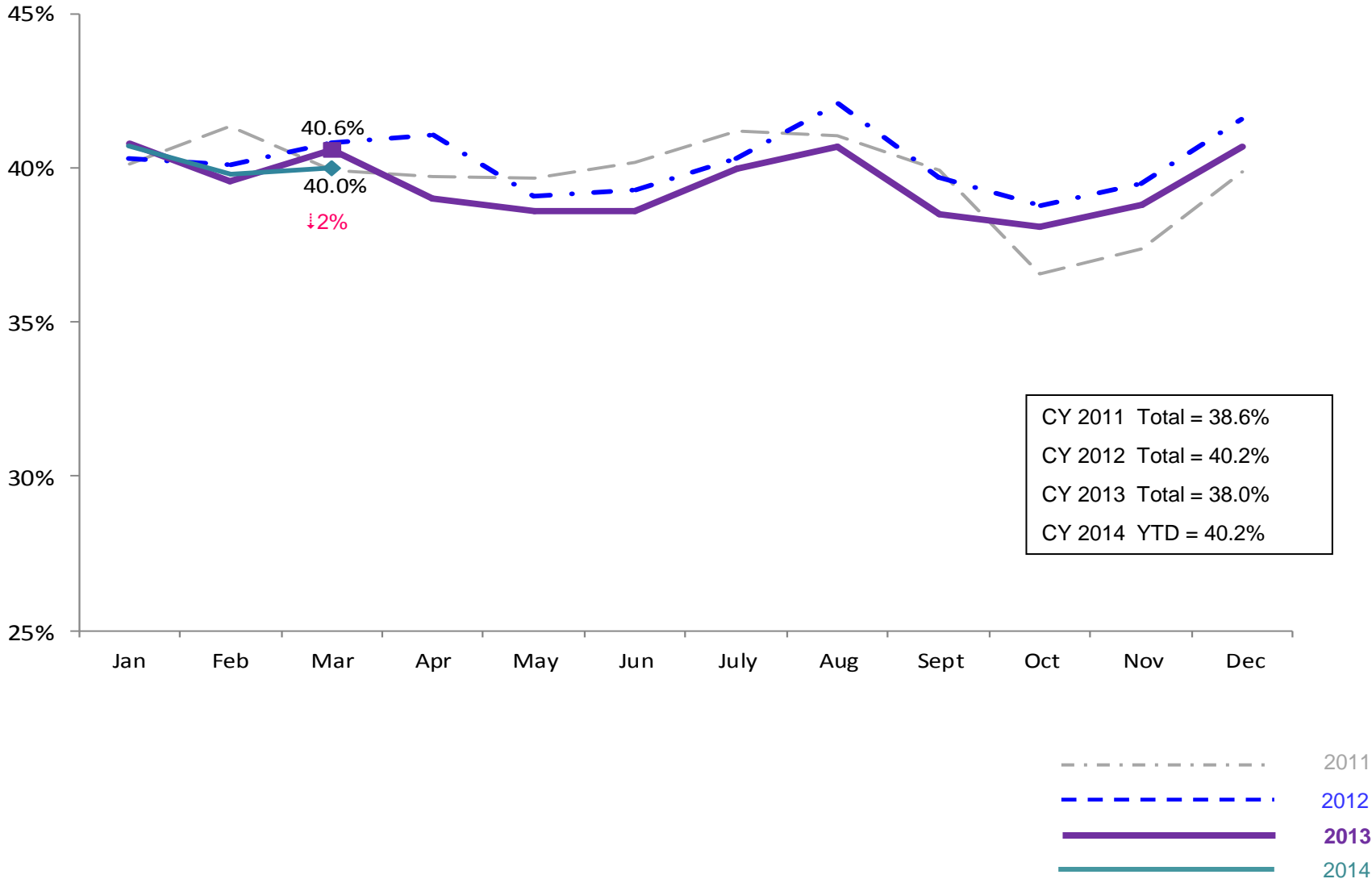
January 2011 – May 2014 (Monthly Total)



Note: Percentage change is May 2013 vs. May 2014.

### SCR Investigation Indication Rate

January 2011 – March 2014

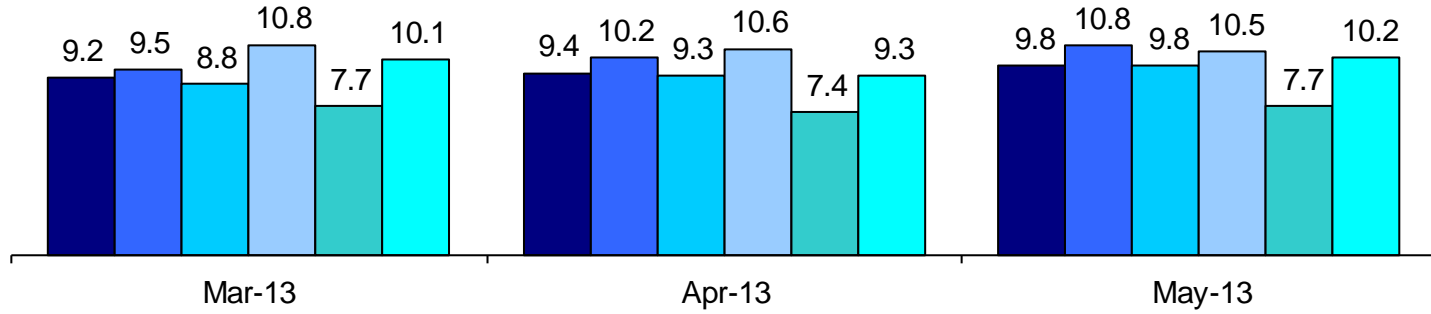


Note: Percentage change is March 2013 vs. March 2014.

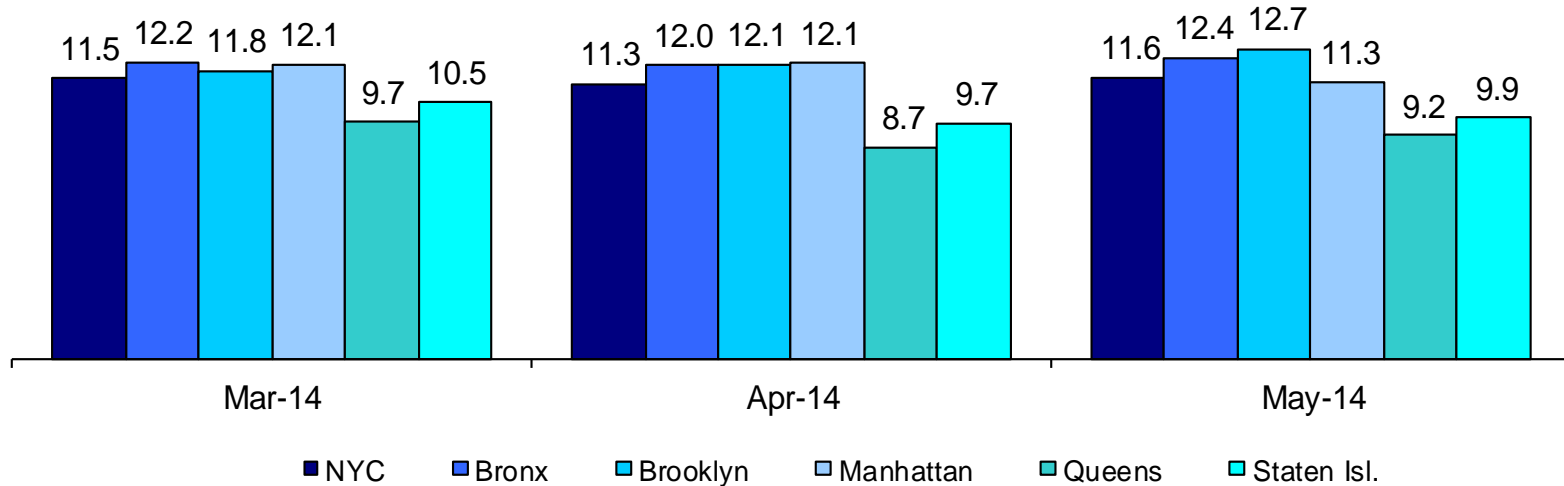
**Average P/D Combined Caseload\***

March 2013 – May 2013 & March 2014 – May 2014

2013



2014

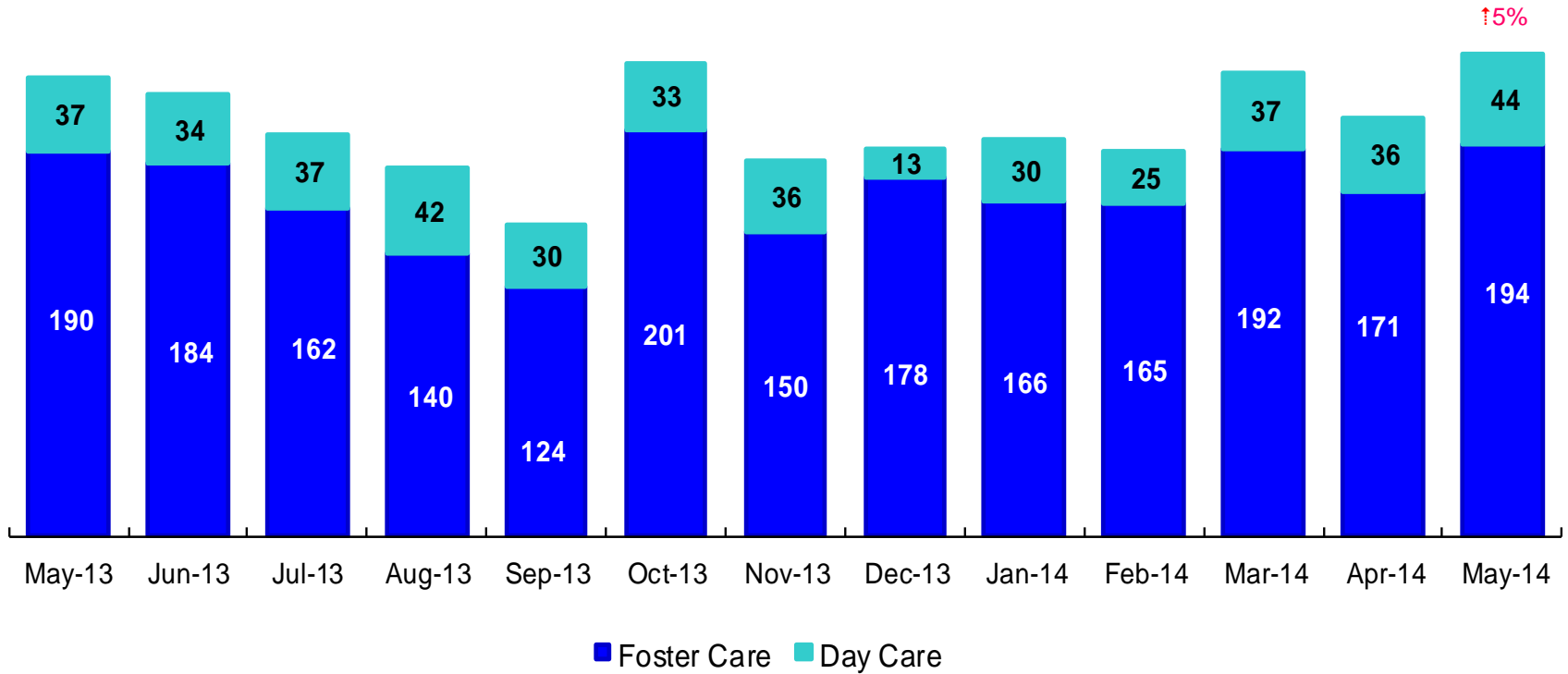


■ NYC ■ Bronx ■ Brooklyn ■ Manhattan ■ Queens ■ Staten Isl.

\* Caseloads are of protective/diagnostic caseworkers only and exclude the caseloads carried by Level I and Level II Supervisors. 6

### OSI Investigations by Program

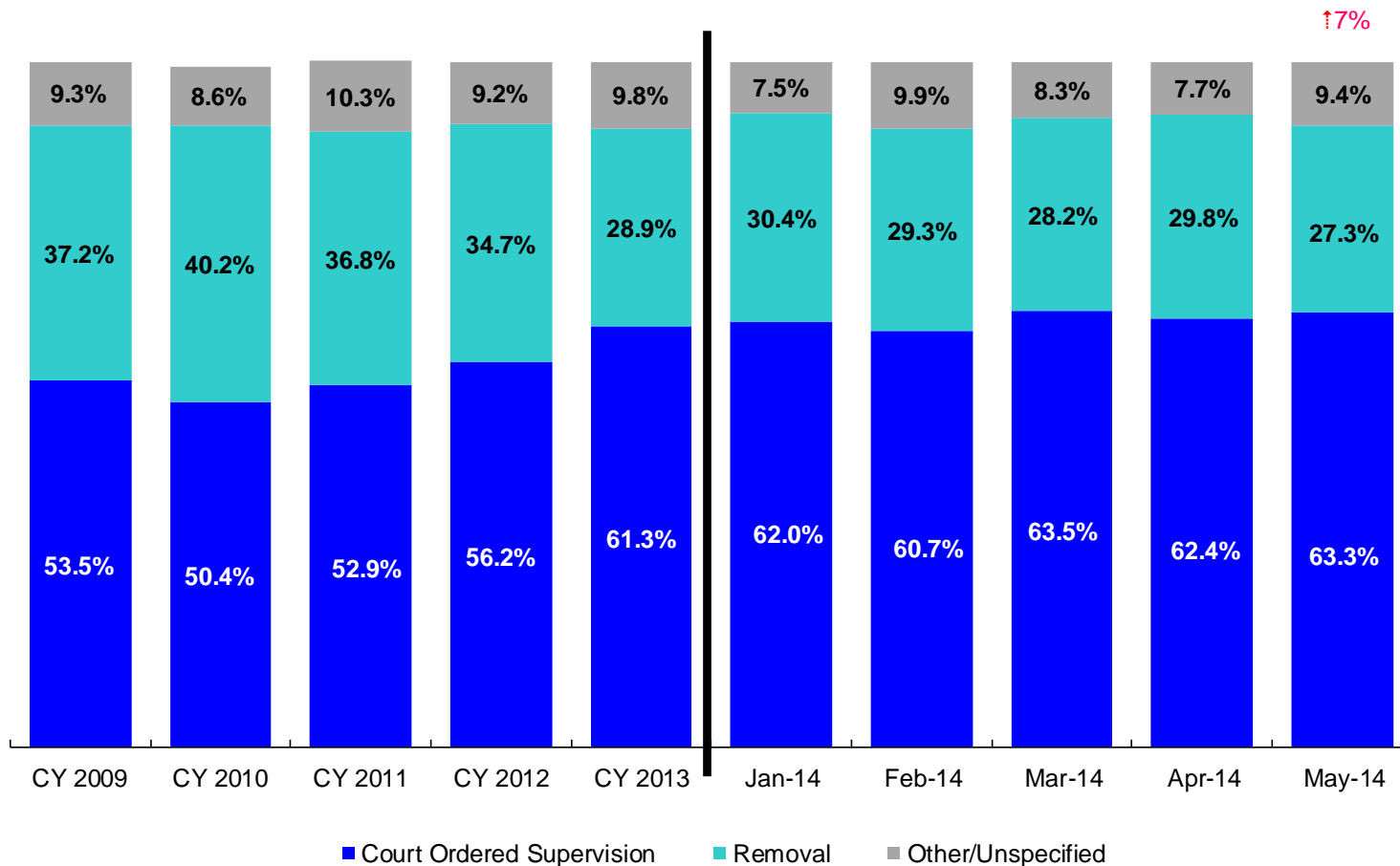
May 2013– May 2014



	May 2013	Jun 2013	Jul 2013	Aug 2013	Sep 2013	Oct 2013	Nov 2013	Dec 2013	Jan 2014	Feb 2014	Mar 2014	Apr 2014	May 2014
Number of Investigations	227	218	199	182	154	234	186	191	196	190	229	207	238

Note: Percentage change is May 2013 vs. May 2014.

Article 10 Total Filings & Filing Outcomes, CY 2009 - CY 2013 and January – May 2014

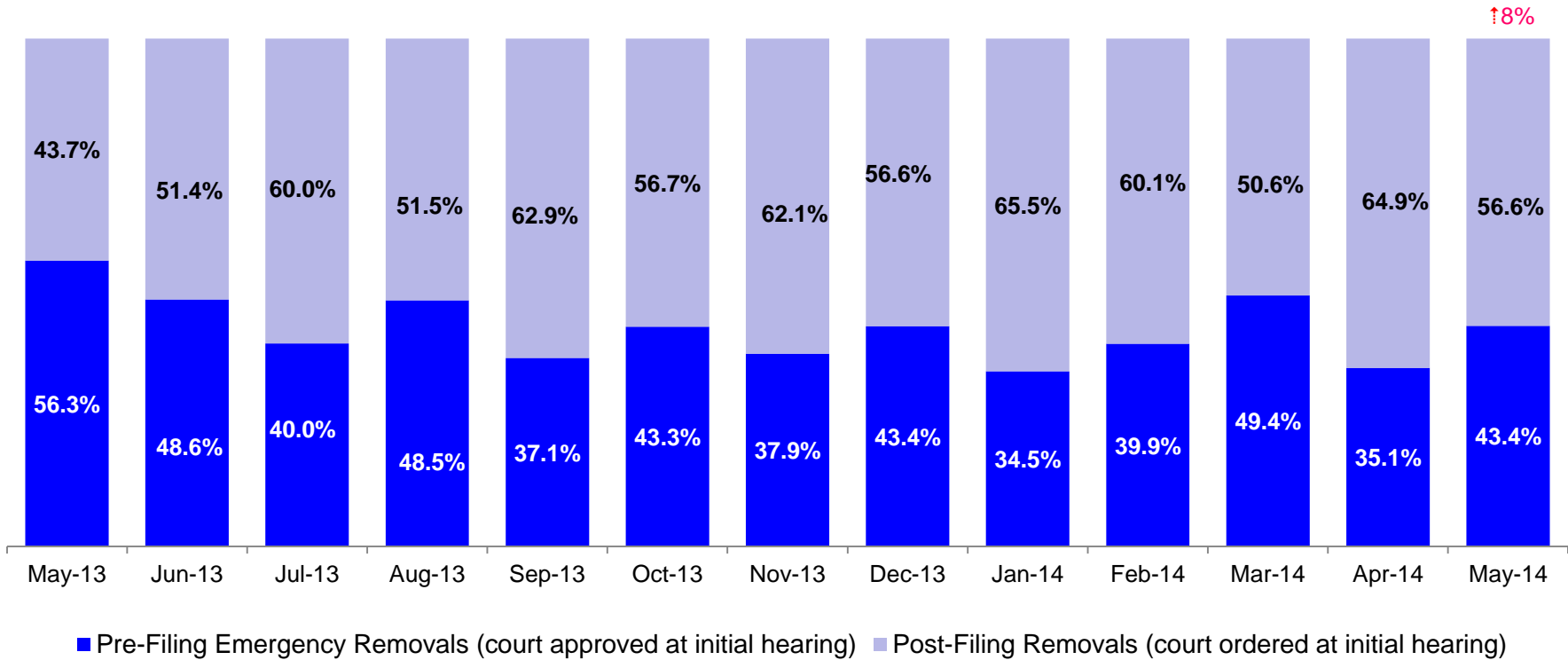


	CY 2009	CY 2010	CY 2011	CY 2012	CY 2013	Jan 2014	Feb 2014	Mar 2014	Apr 2014	May 2014
Art.10 Filings	11,568	10,093	9,596	8,913	9,318	743	828	905	801	978

Notes: 1) The category “Other/Unspecified” includes released with no supervision, no order issued and no outcome specified. Outcomes of cases heard the next day are not captured in this report. 2) Percentage change is May 2013 vs. May 2014.



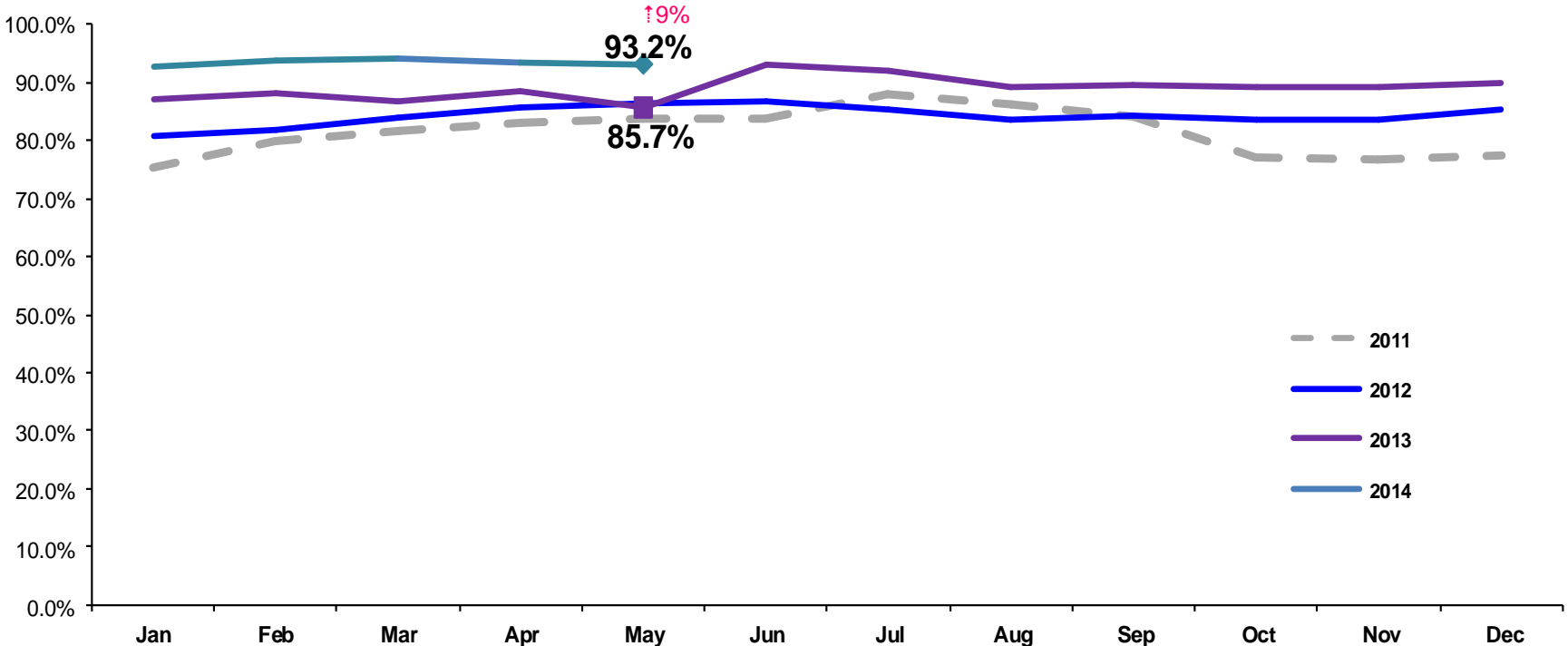
### Article 10 Filing Removals, May 2013 – May 2014



	May 2013	Jun 2013	Jul 2013	Aug 2013	Sep 2013	Oct 2013	Nov 2013	Dec 2013	Jan 2014	Feb 2014	Mar 2014	Apr 2014	May 2014
Number of Removals	247	220	220	200	229	261	224	212	226	243	255	239	267

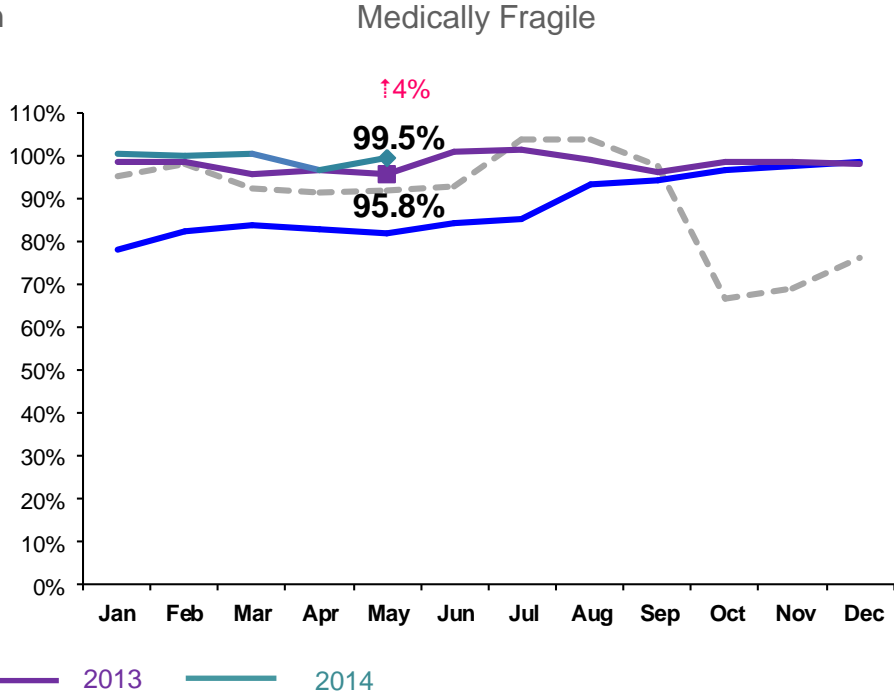
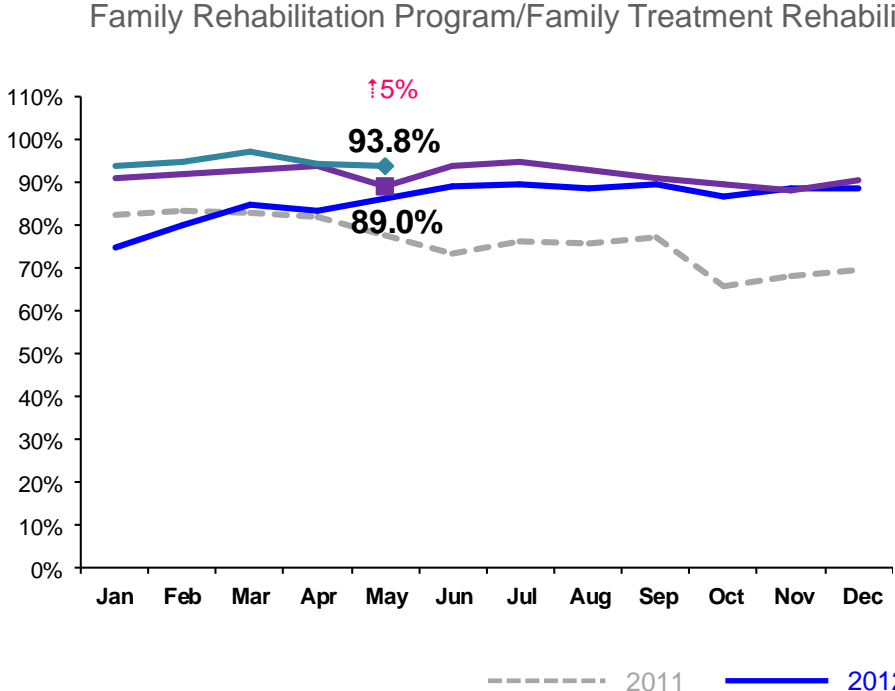
Note: Percentage change is May 2013 vs. May 2014.

**PPRS Utilization Rate**  
 January 2011 – May 2014 (End of Month)  
 General Preventive



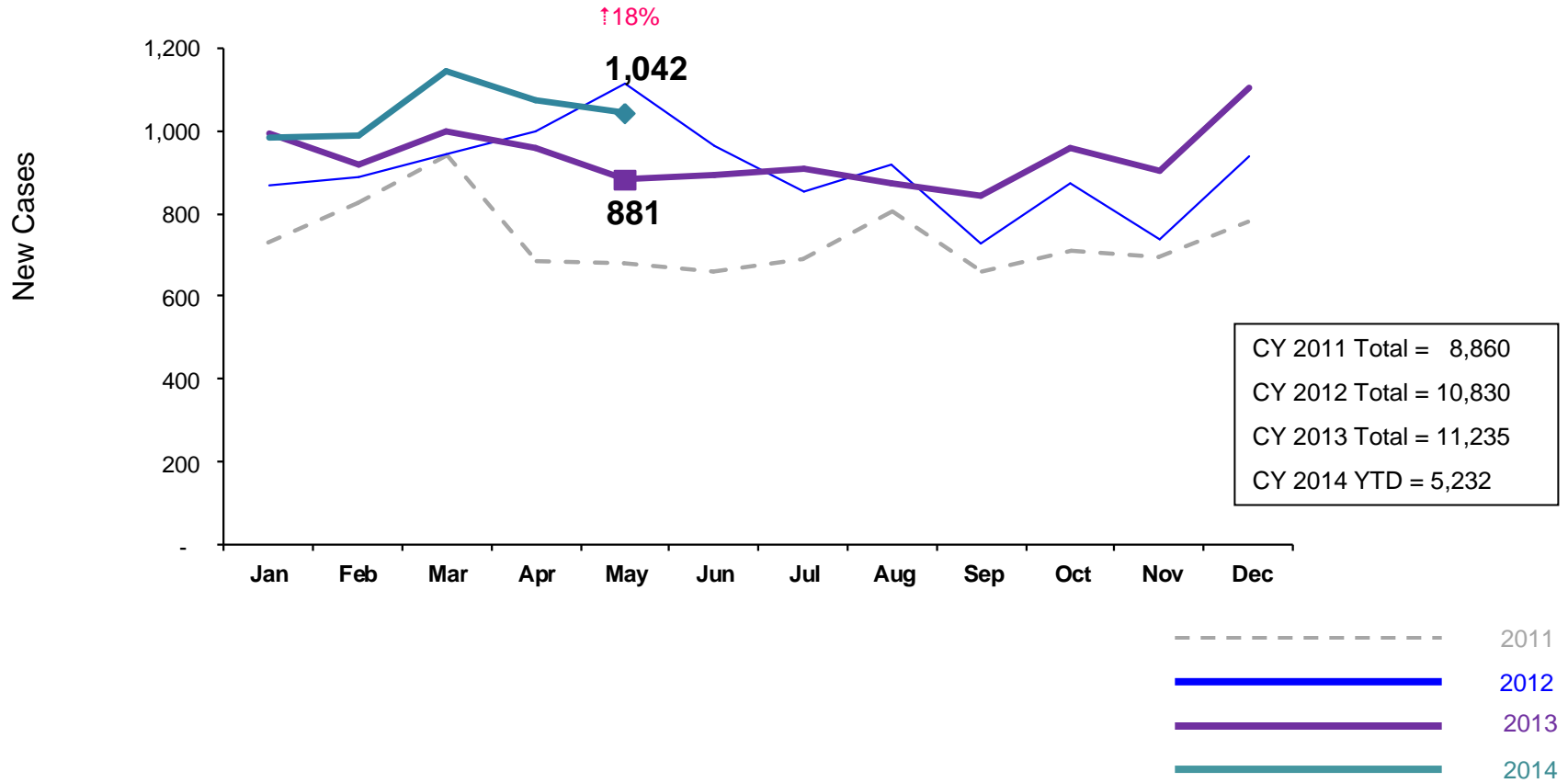
Notes: 1) Beacons programs are included in the GP utilization rates. 2) During February - June 2011 GP rates were adjusted by excluding programs in the process of being closed. GP rates were also adjusted during July – September 2011 by excluding newly opened programs. 3) During June-October 2013 GP programs in the process of converting to EBMs were excluded from the GP utilization statistics. 4) Percentage change is May 2013 vs. May 2014.

### PPRS Utilization Rate January 2011 – May 2014 (End of Month)



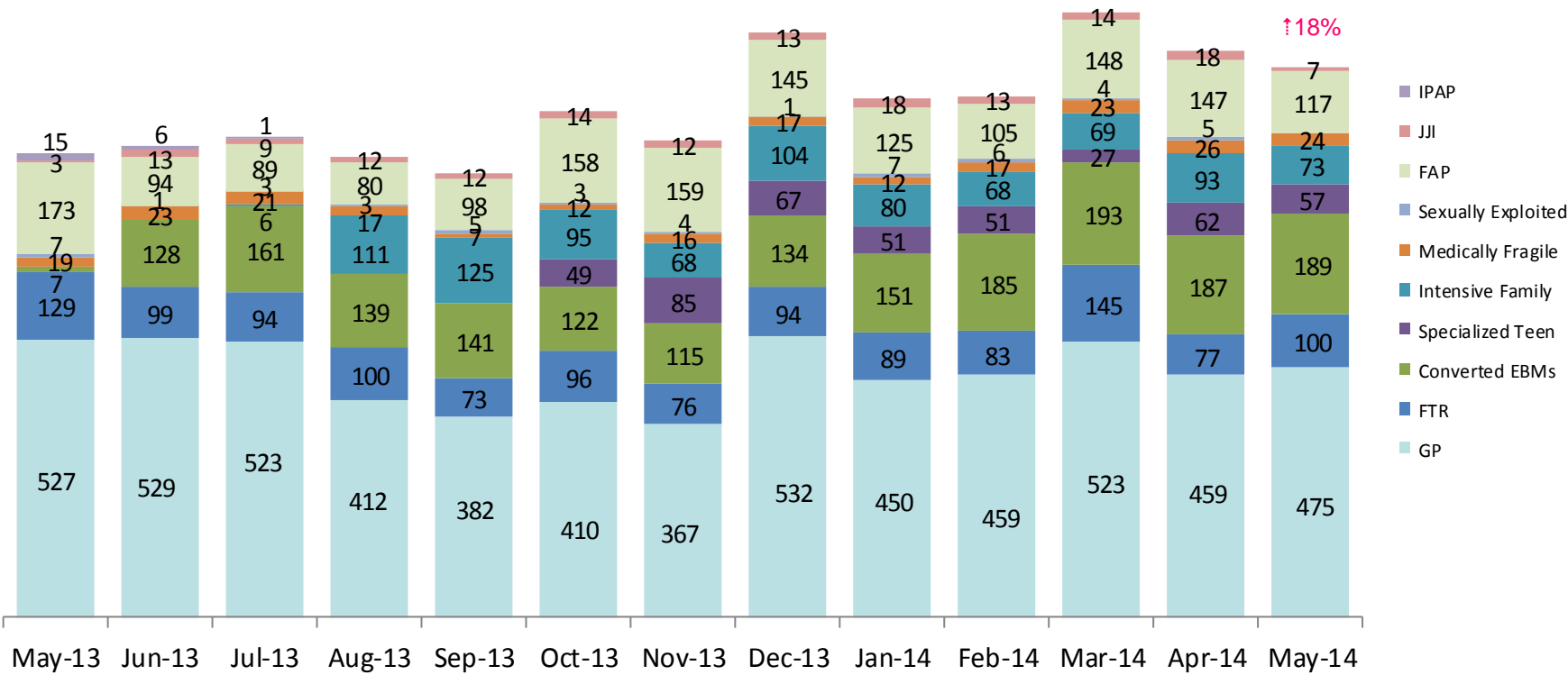
Notes: 1) During February - June 2011 FRP rates were adjusted by excluding programs in the process of being closed. FT/R rates were also adjusted during July – September 2011 by excluding newly opened programs. As of October 2011 all FT/R programs are included in the FT/R utilization rates. 2) Beginning July 2011 Family Treatment Rehabilitation programs replaced the Family Rehabilitation programs. 3) Beginning December 2011 the NYF Family Services for deaf Children and Adults program is no longer included in the medically fragile utilization rate. 4) During June -October 2013 FTR programs in the process of converting to EBMs were excluded from the FTR utilization statistics. 5) Percentage change is May 2013 vs. May 2014.

**New Preventive Cases\***  
January 2011 – May 2014



\*Notes: 1) New preventive cases do not include cases transferred from one preventive program to another. 2) Percentage change is May 2013 vs. May 2014. 3) See Pages 34 and 35 of the Appendix for supporting data.

New Preventive Cases\* by Program Type  
 May 2013 – May 2014

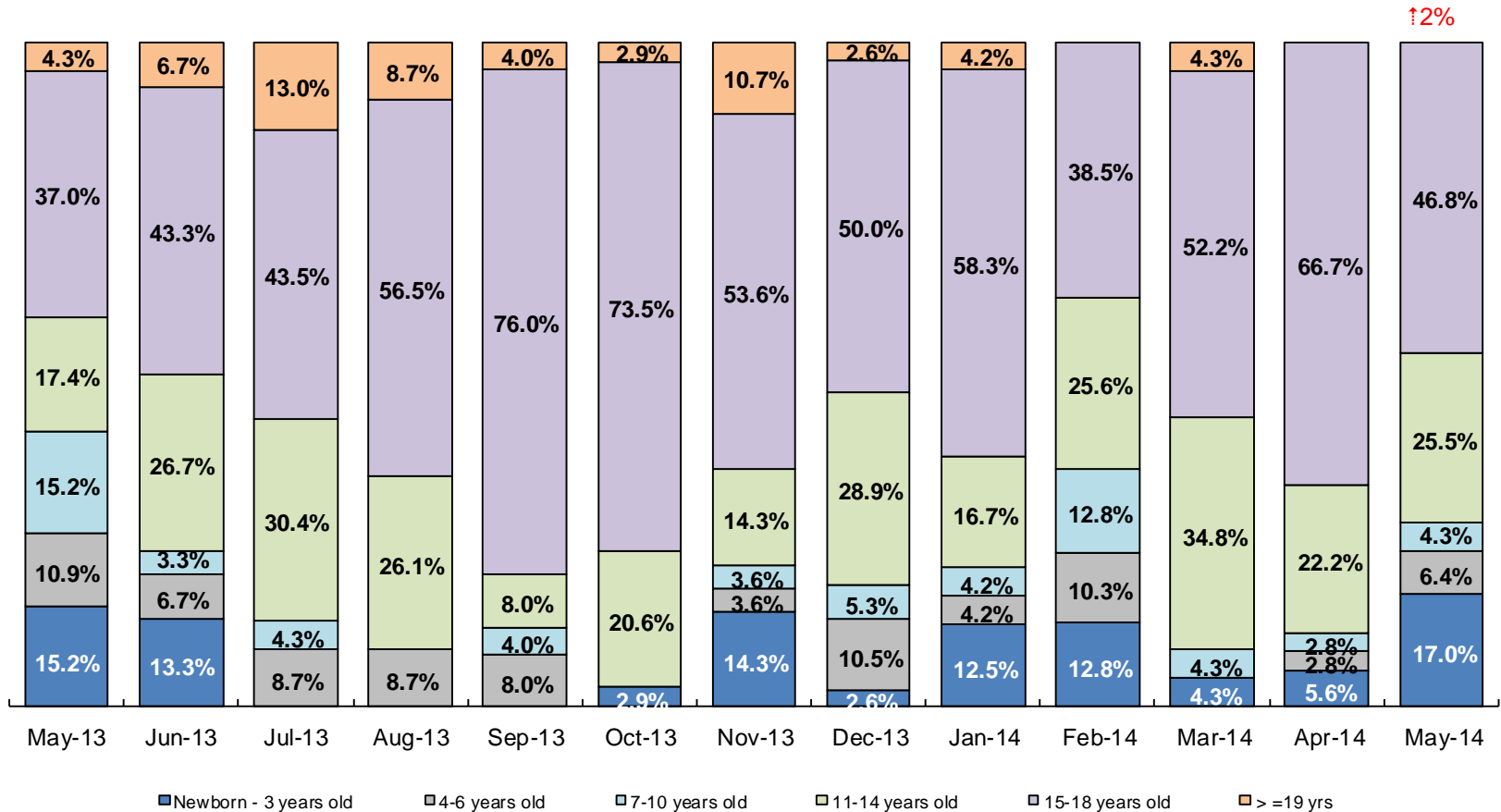


	May 2013	Jun 2013	Jul 2013	Aug 2013	Sep 2013	Oct 2013	Nov 2013	Dec 2013	Jan 2014	Feb 2014	Mar 2014	Apr 2014	May 2014
Number of New Preventive Cases	881	893	907	874	843	959	902	1,107	983	987	1,146	1,074	1,042

Notes: 1) New preventive cases do not include cases transferred from one preventive program to another. 2) Percentage change is May 2013 vs. May 2014.

### Children's Center Population by Age

May 2013 – May 2014

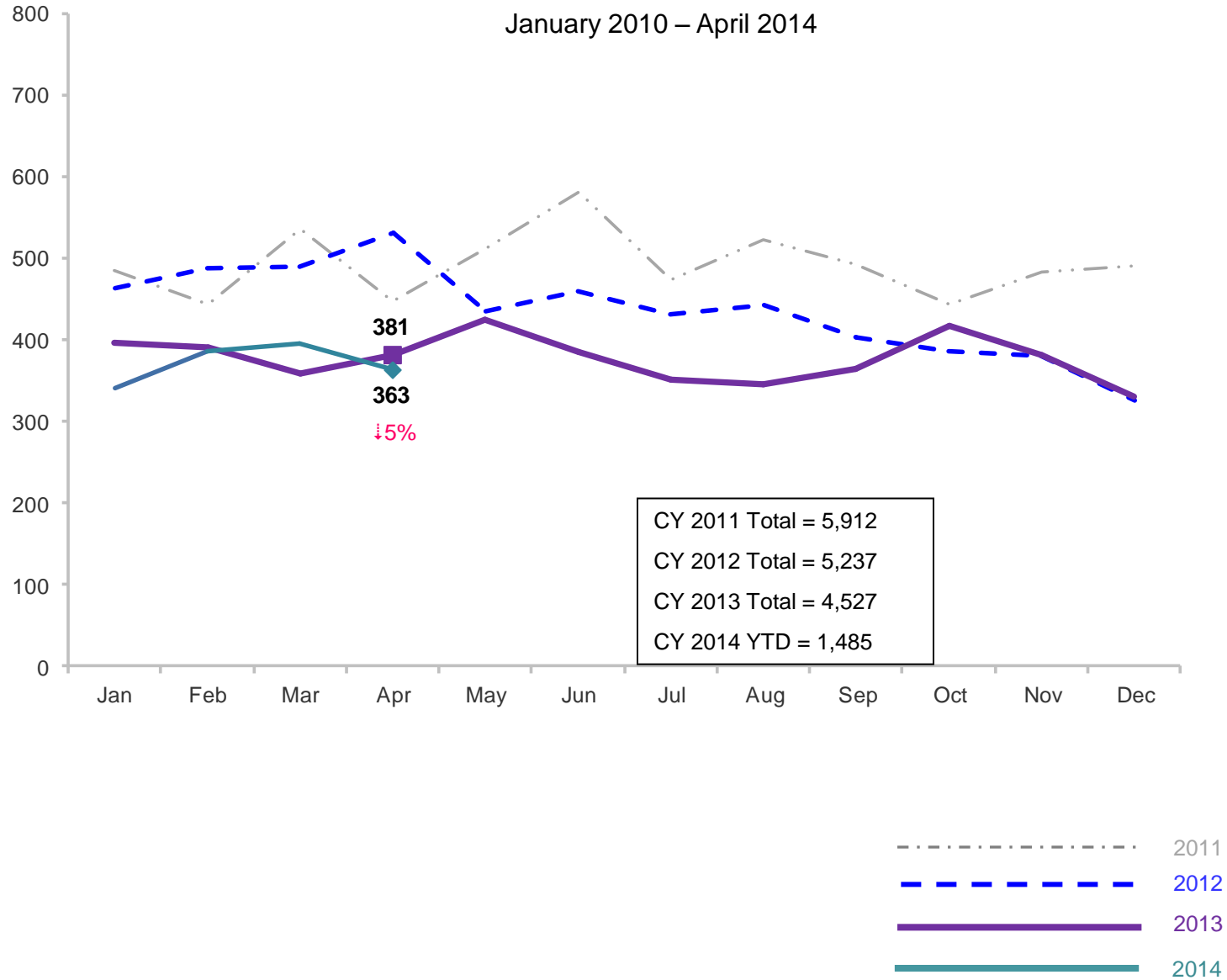


	May 2013	Jun 2013	Jul 2013	Aug 2013	Sep 2013	Oct 2013	Nov 2013	Dec 2013	Jan 2014	Feb 2014	Mar 2014	Apr 2014	May 2014
Number of Children	46	30	23	23	25	34	28	38	24	39	23	36	47

Note: Percentage change is May 2013 vs. May 2014.

### Total Monthly Placements

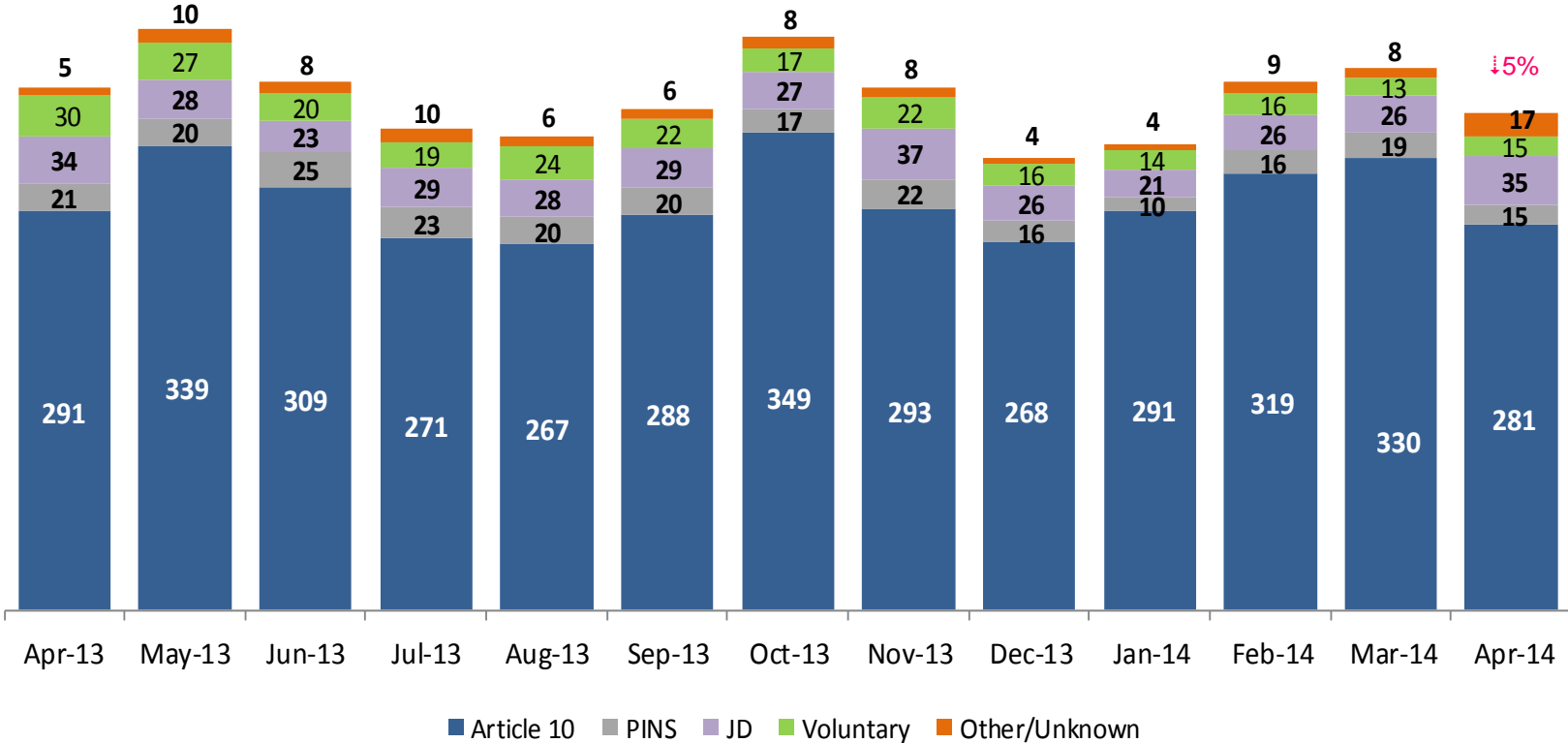
January 2010 – April 2014



Note: Percentage change is April 2013 vs. April 2014.

Reason for Initial Placements into Foster Care

April 2013 – April 2014



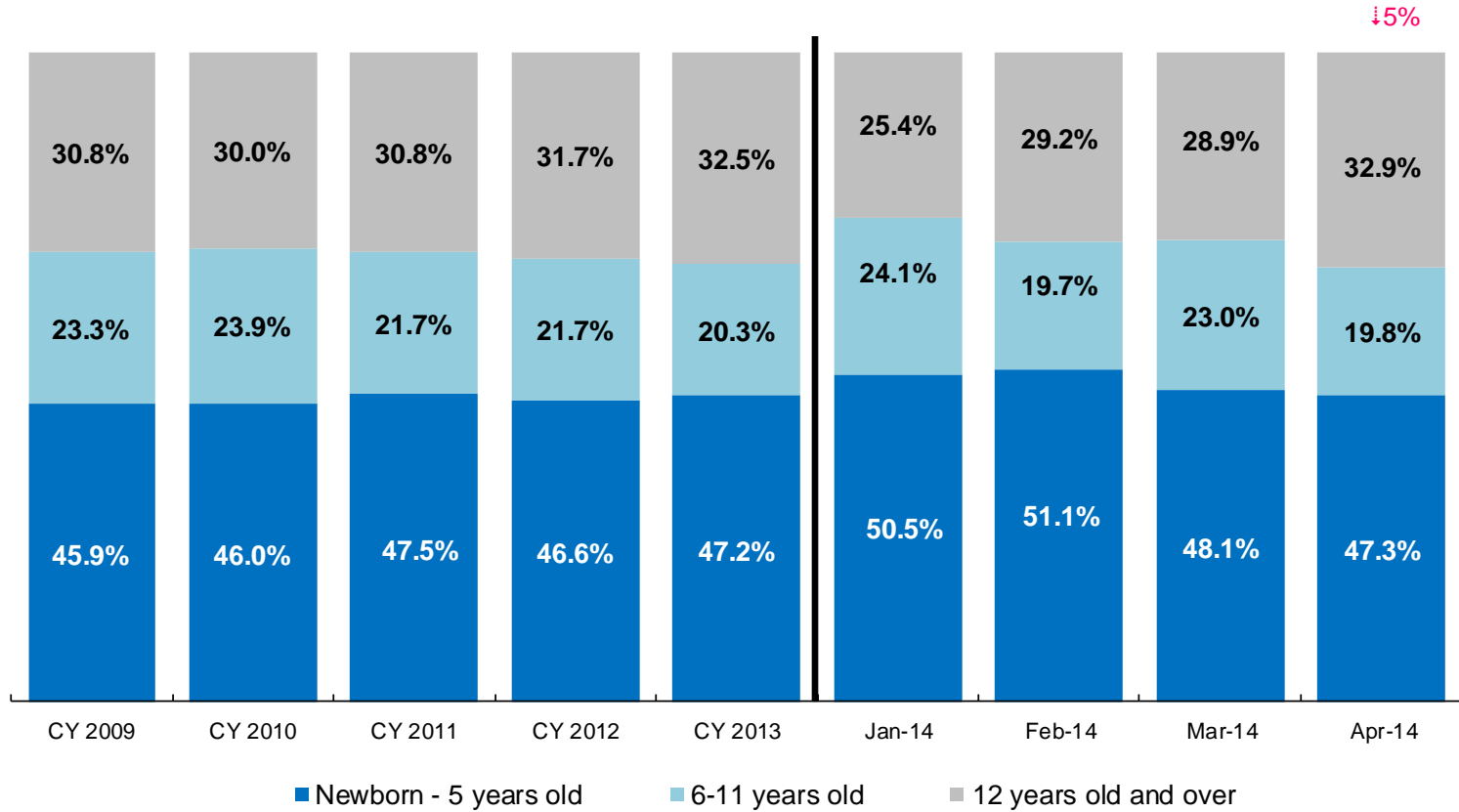
	Apr 2013	May 2013	Jun 2013	Jul 2013	Aug 2013	Sep 2013	Oct 2013	Nov 2013	Dec 2013	Jan 2014	Feb 2014	Mar 2014	April 2014
Number of Placements	381	424	385	352	345	365	418	382	330	340	386	396	363

Note: Percentage change is April 2013 vs. April 2014.



### Placements\* by Age

CY 2009 – CY 2013 and January 2014 – April 2014

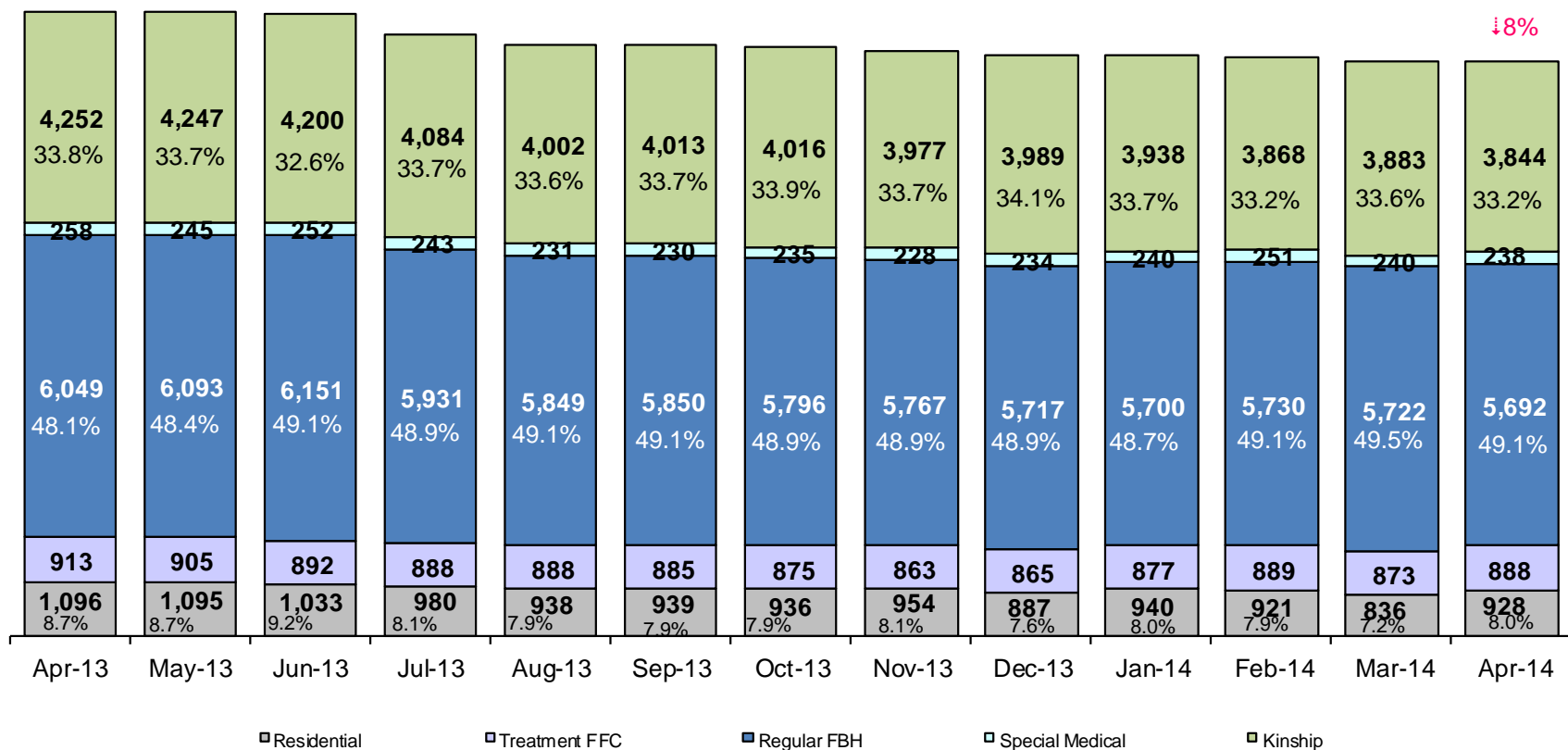


	CY 2008	CY 2009	CY 2010	CY 2011	CY 2012	CY 2013	Jan 2014	Feb 2014	Mar 2014	Apr 2014
Placements	4,764	5,657	5,842	4,941	4,823	4,170	319	360	370	328

\*Excludes JD placements.

Note: Percentage change is April 2013 vs. April 2014.

### Children in Foster Care\* April 2013 – April 2014 (end of month)

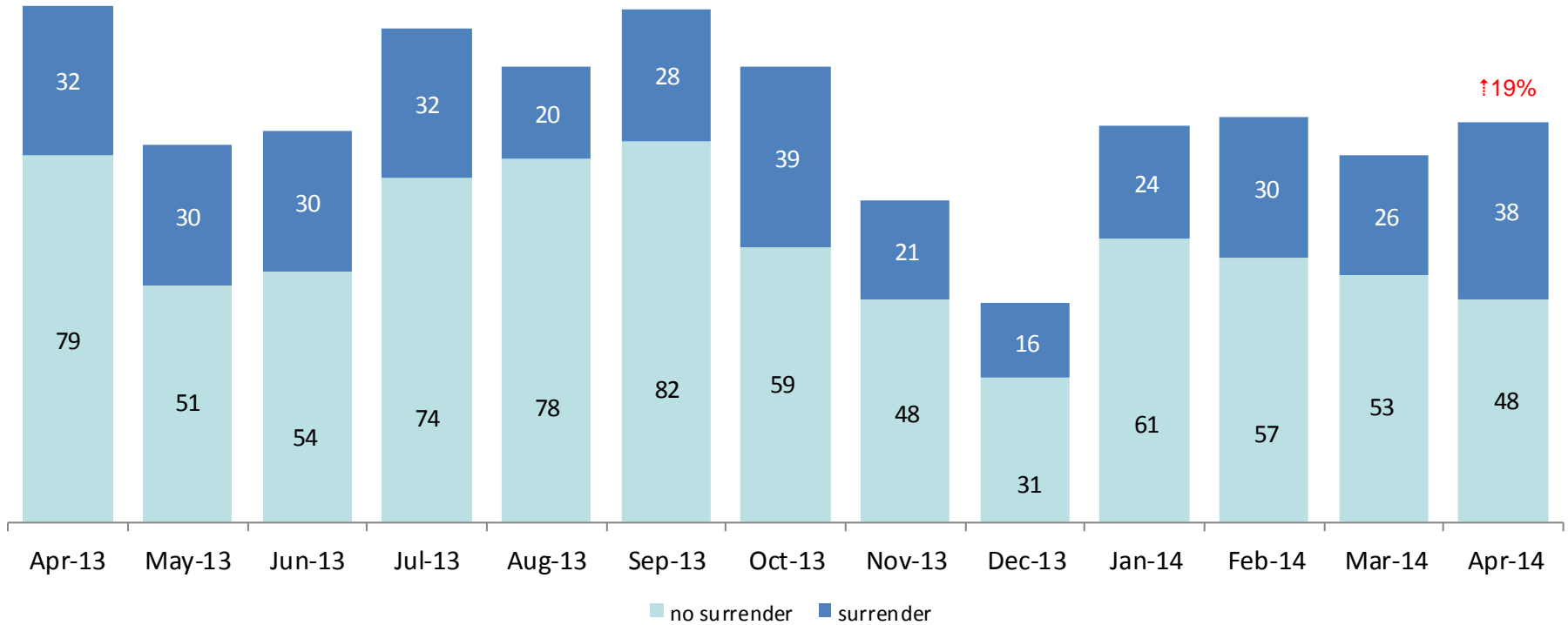


	Apr 2013	May 2013	Jun 2013	Jul 2013	Aug 2013	Sep 2013	Oct 2013	Nov 2013	Dec 2013	Jan 2014	Feb 2014	Mar 2014	Apr 2014
Number in Foster Care	12,568	12,585	12,528	12,126	11,908	11,917	11,858	11,789	11,692	11,695	11,659	11,554	11,590

\*Excludes JD placements and includes approximately 400 young children who are living in foster homes or residential care facilities with their mothers who are in foster care (8D children).

Note: Percentage change is April 2013 vs. April 2014.

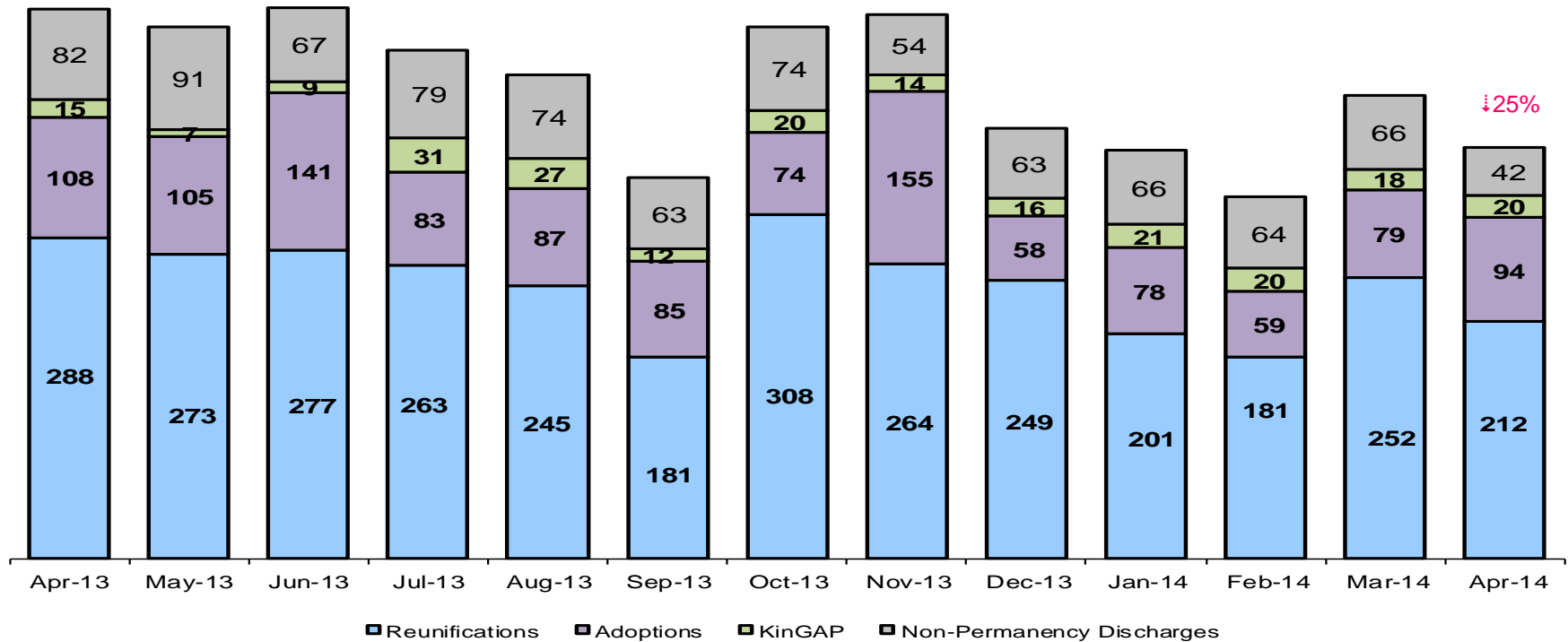
### Children Freed for Adoption, Surrender by at Least One Parent April 2013 – April 2014



	Apr 2013	May 2013	Jun 2013	Jul 2013	Aug 2013	Sep 2013	Oct 2013	Nov 2013	Dec 2013	Jan 2014	Feb 2014	Mar 2014	Apr 2014
Number Freed for Adoption	111	81	84	106	98	110	98	69	47	85	87	79	86

Note: Percentage change is for the number of children surrendered by at least on parent during April 2013 vs. April 2014.

### Permanency and Non-Permanency\* Discharges from Foster Care\*\* April 2013 – April 2014



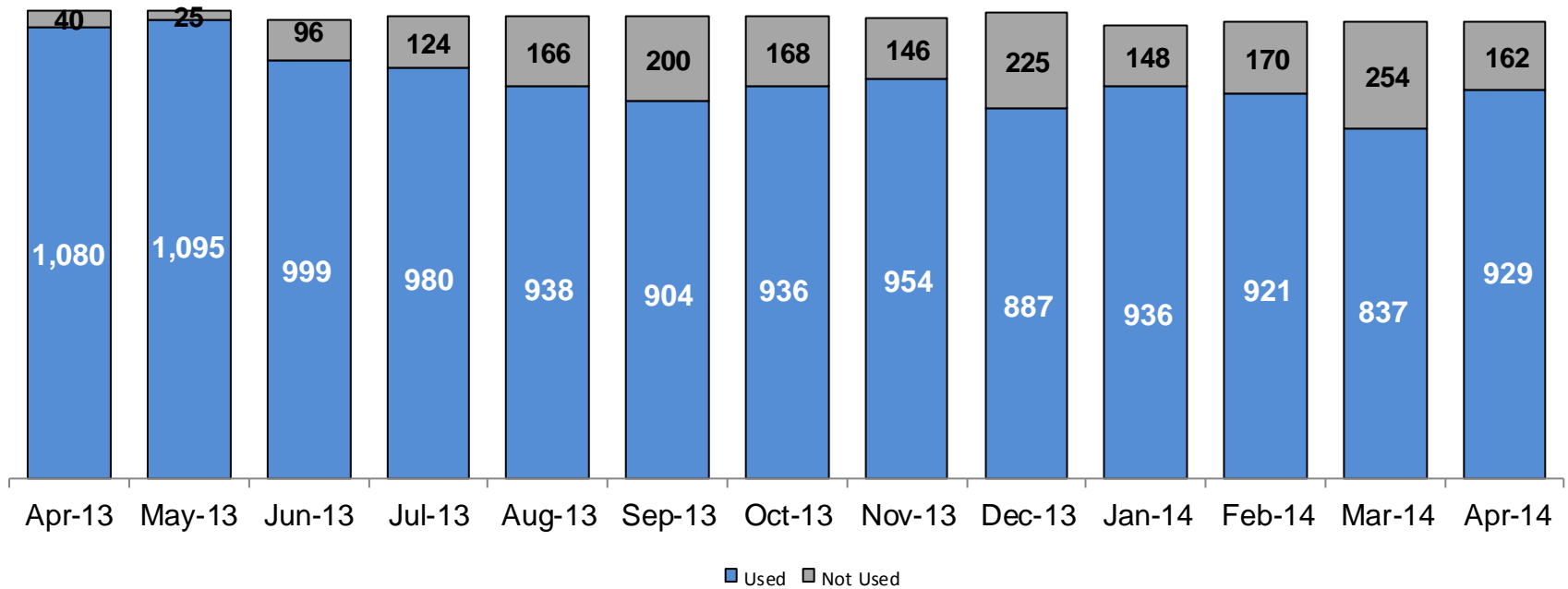
	Apr 2013	May 2013	Jun 2013	Jul 2013	Aug 2013	Sep 2013	Oct 2013	Nov 2013	Dec 2013	Jan 2014	Feb 2014	Mar 2014	Apr 2014
Number of Discharges	493	476	494	456	433	341	476	487	386	366	324	415	368

\*Non-permanency discharges include AWOL, APPLA as well as other discharge destinations such as mental institutions and correctional facilities and discharges with unspecified destinations.

\*\*Excludes discharges of youth who were in JD status at any time during their foster care spell.

Note: Percentage change is April 2013 vs. April 2014.

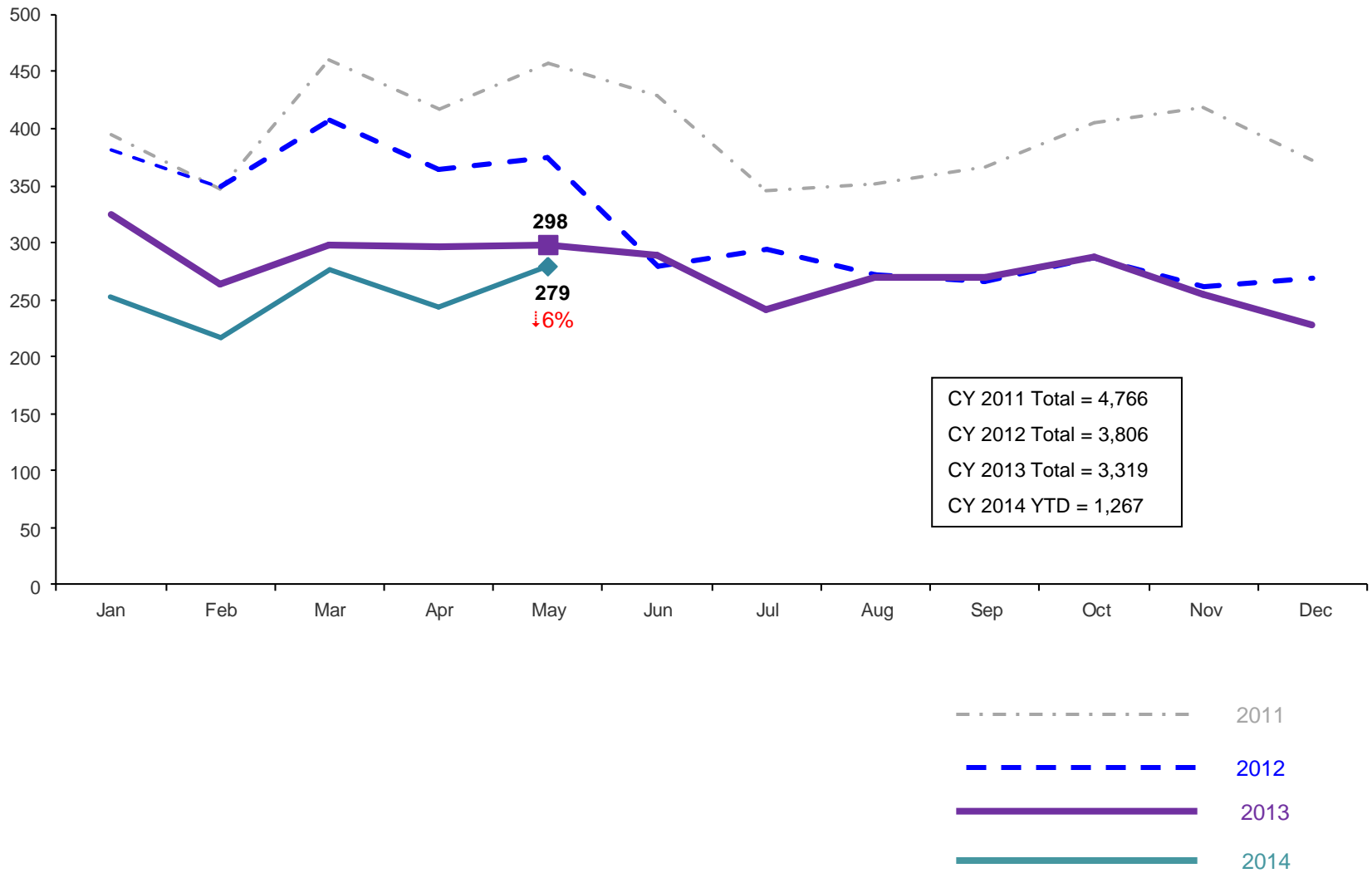
### Residential Care Capacity and Utilization, April 2013 – April 2014



	Apr 2013	May 2013	Jun 2013	Jul 2013	Aug 2013	Sep 2013	Oct 2013	Nov 2013	Dec 2013	Jan 2014	Feb 2014	Mar 2014	Apr 2014
Capacity	1,120	1,120	1,095	1,104	1,104	1,104	1,104	1,100	1,112	1,084	1,091	1,091	1,091

### Total Monthly Admissions to Detention

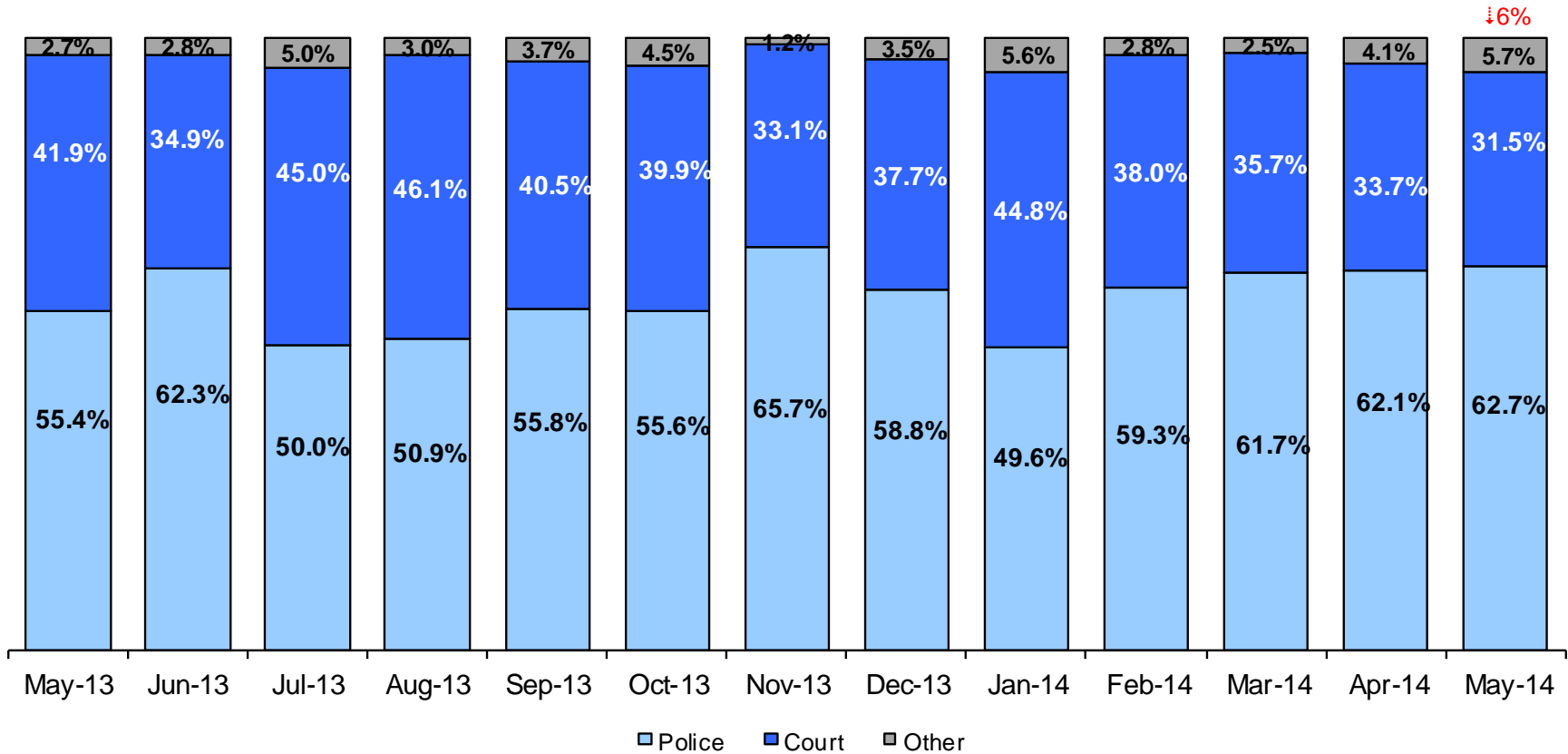
January 2011 – May 2014 (Monthly Total)



Note: Percentage change is May 2013 vs. May 2014.

### Admit Authority on Admissions

May 2013 - May 2014 (Monthly Total)



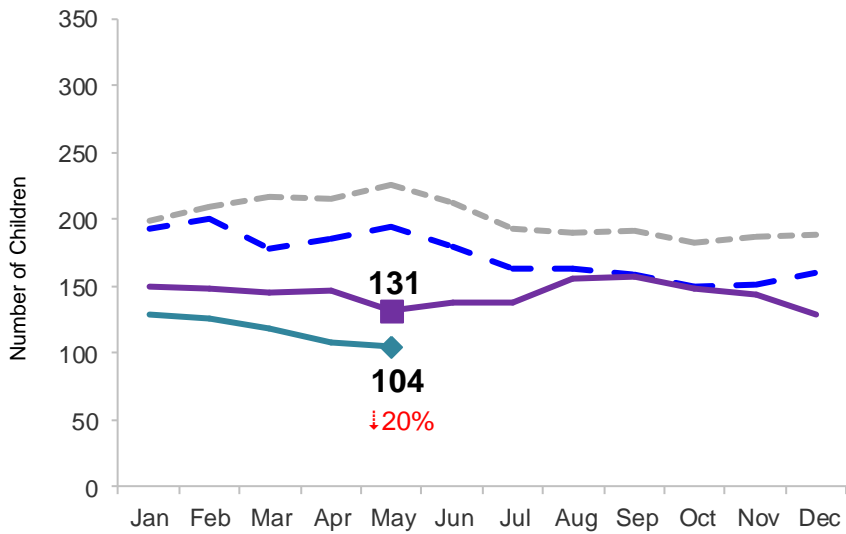
	May 2013	Jun 2013	Jul 2013	Aug 2013	Sep 2013	Oct 2013	Nov 2013	Dec 2013	Jan 2014	Feb 2014	Mar 2014	Apr 2014	May 2014
Number of Admissions	298	289	242	269	269	288	254	228	252	216	277	243	279

Notes: 1) Other Admit Authority includes the Sheriff Department, Department of Corrections and ACS. 2) Percentage change is May 2013 vs. May 2014.

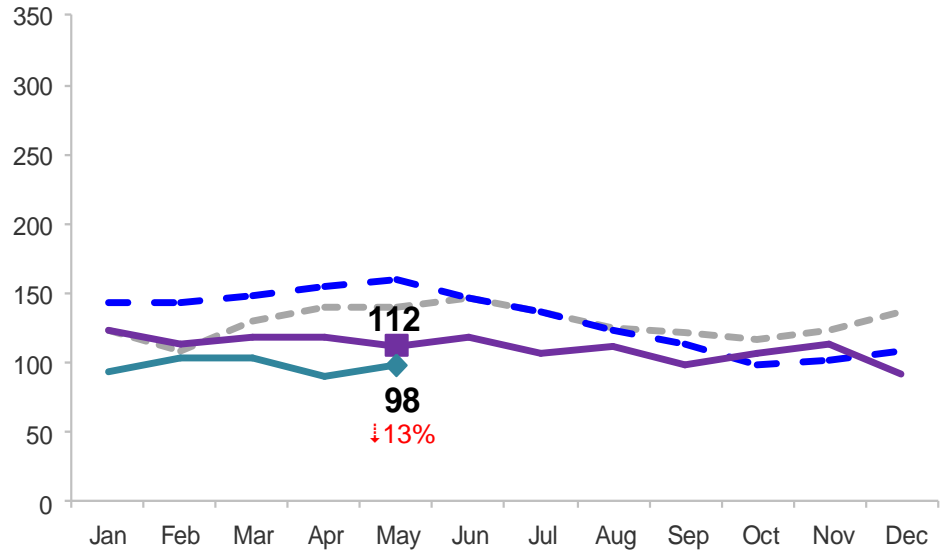
### Monthly Average Daily Population

January 2011 – May 2014

#### Secure Detention



#### Non-Secure Detention

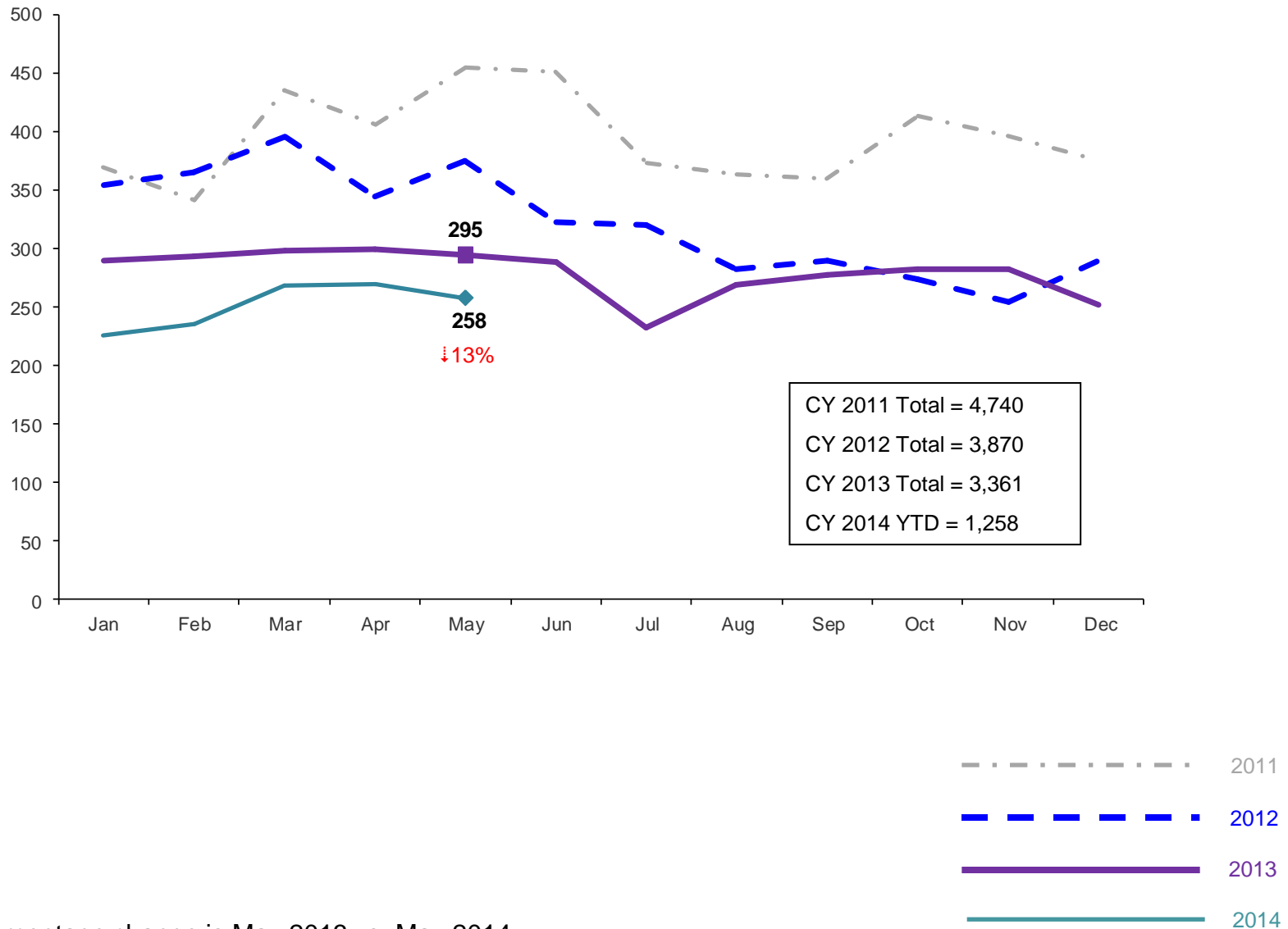


Note: Percentage change is May 2013 vs. May 2014.



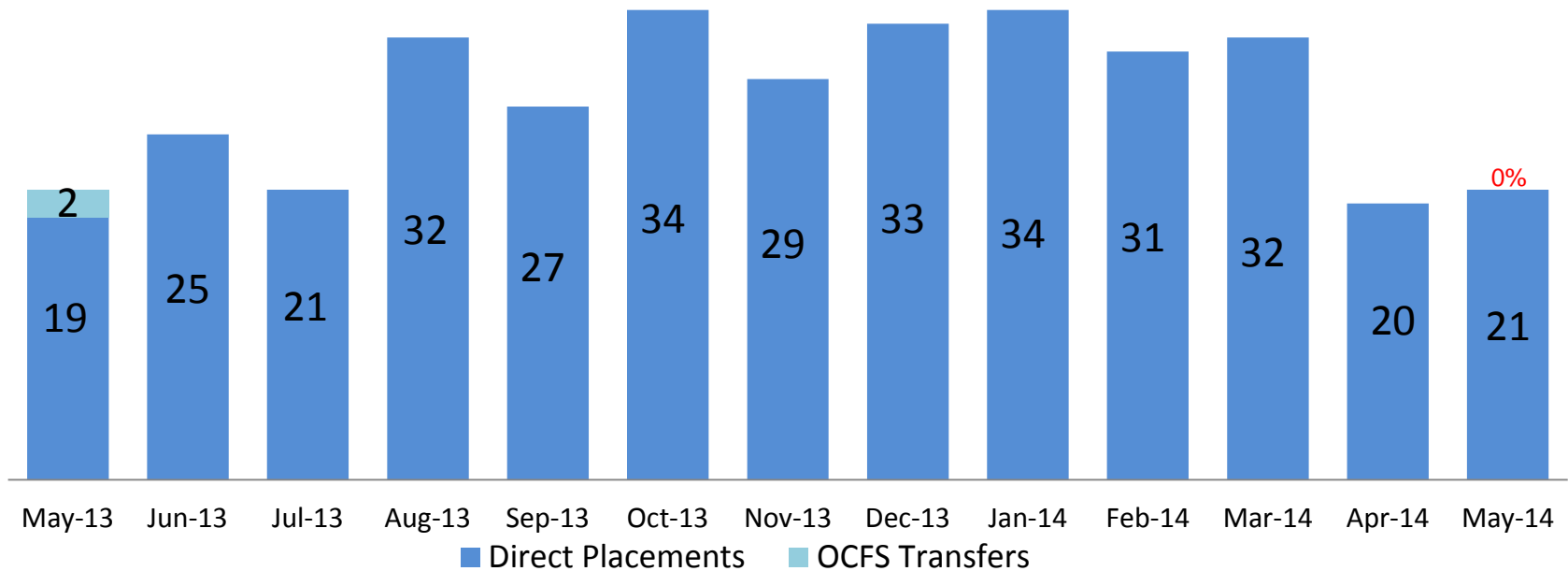
### Total Monthly Releases from Detention

January 2011 – May 2014 (Monthly Total)



Note: Percentage change is May 2013 vs. May 2014.

### ACS NSP Intakes May 2013 – May 2014

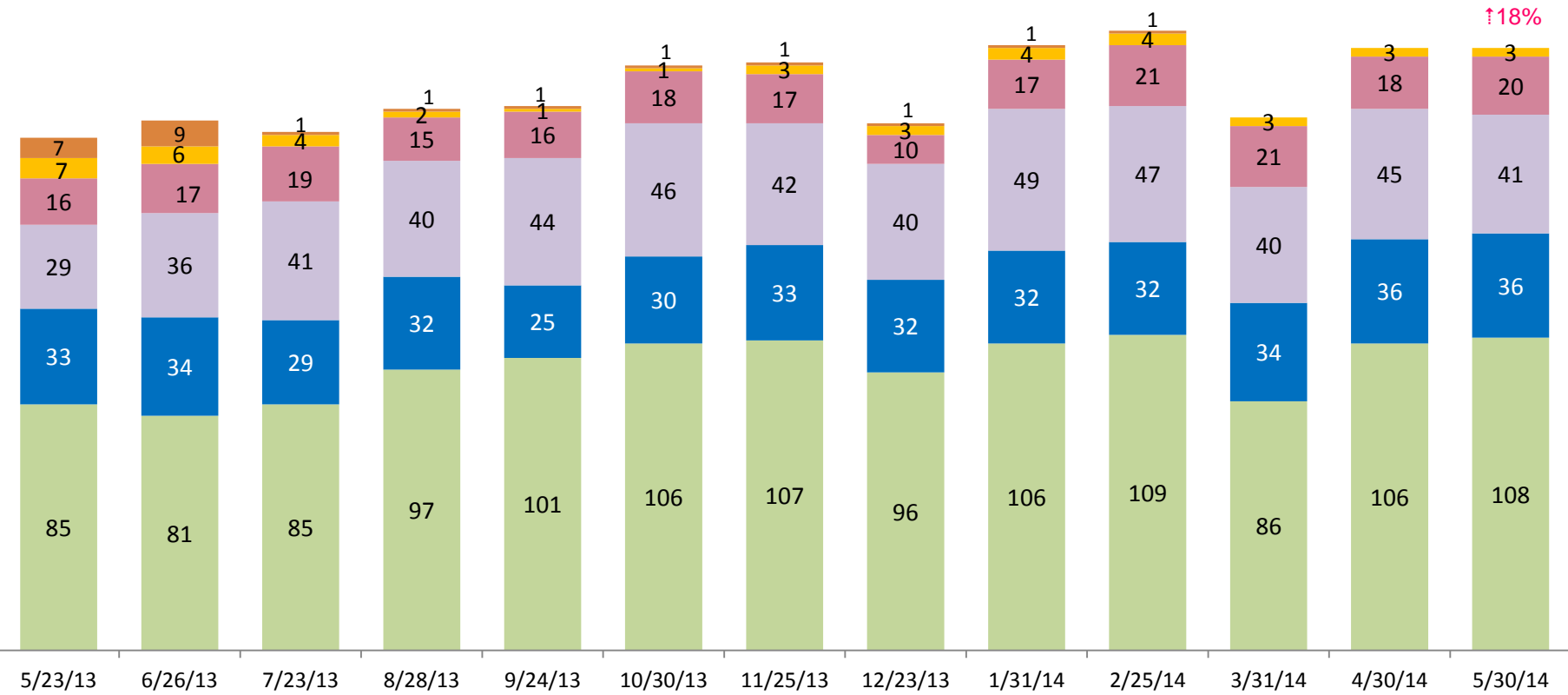


	May 2013	Jun 2013	Jul 2013	Aug 2013	Sep 2013	Oct 2013	Nov 2013	Dec 2013	Jan 2014	Feb 2014	Mar 2014	Apr 2014	May 2014
Number of Placements	21	25	21	32	27	34	29	33	34	31	32	20	21

Note: Percentage change is May 2013 vs. May 2014.

# ACS Non-Secure Placement, in 24 hour Care

May 2013 – May 2014 (Point-in-Time)



■ General, Male   
 ■ General, Female   
 ■ Specialized, Male   
 ■ Specialized, Female   
 ■ MTFC   
 ■ Other\*

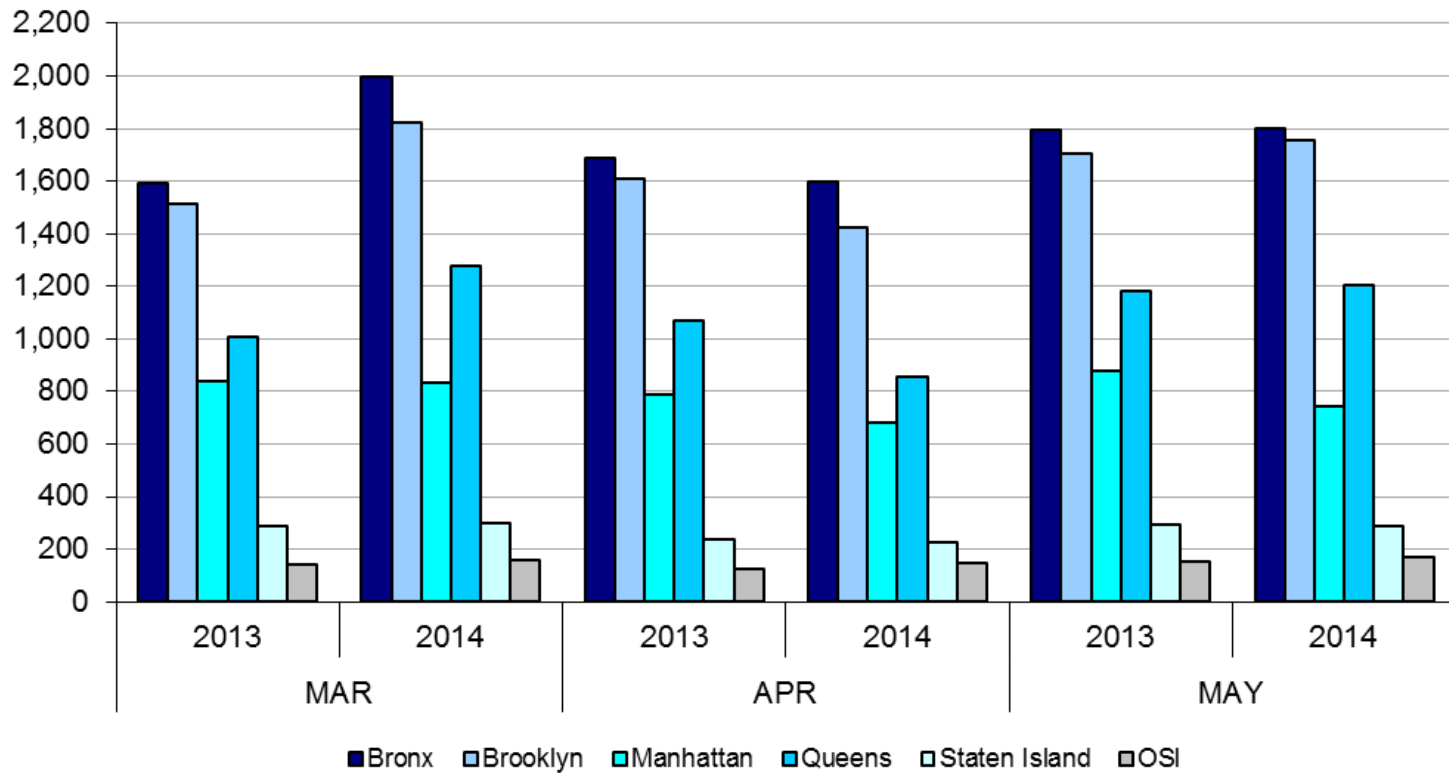
	5/23/13	6/26/13	7/23/13	8/28/13	9/24/13	10/30/13	11/25/13	12/23/13	1/31/14	2/25/14	3/31/14	4/30/14	5/30/14
Number in Placement	177	183	179	187	188	202	203	182	209	214	184	208	208

\*Other includes NYC youth in voluntary placements with Lincoln Hall, MercyFirst and Graham Windham.

Note: Percentage change is May 2013 vs. May 2014.

# Appendix

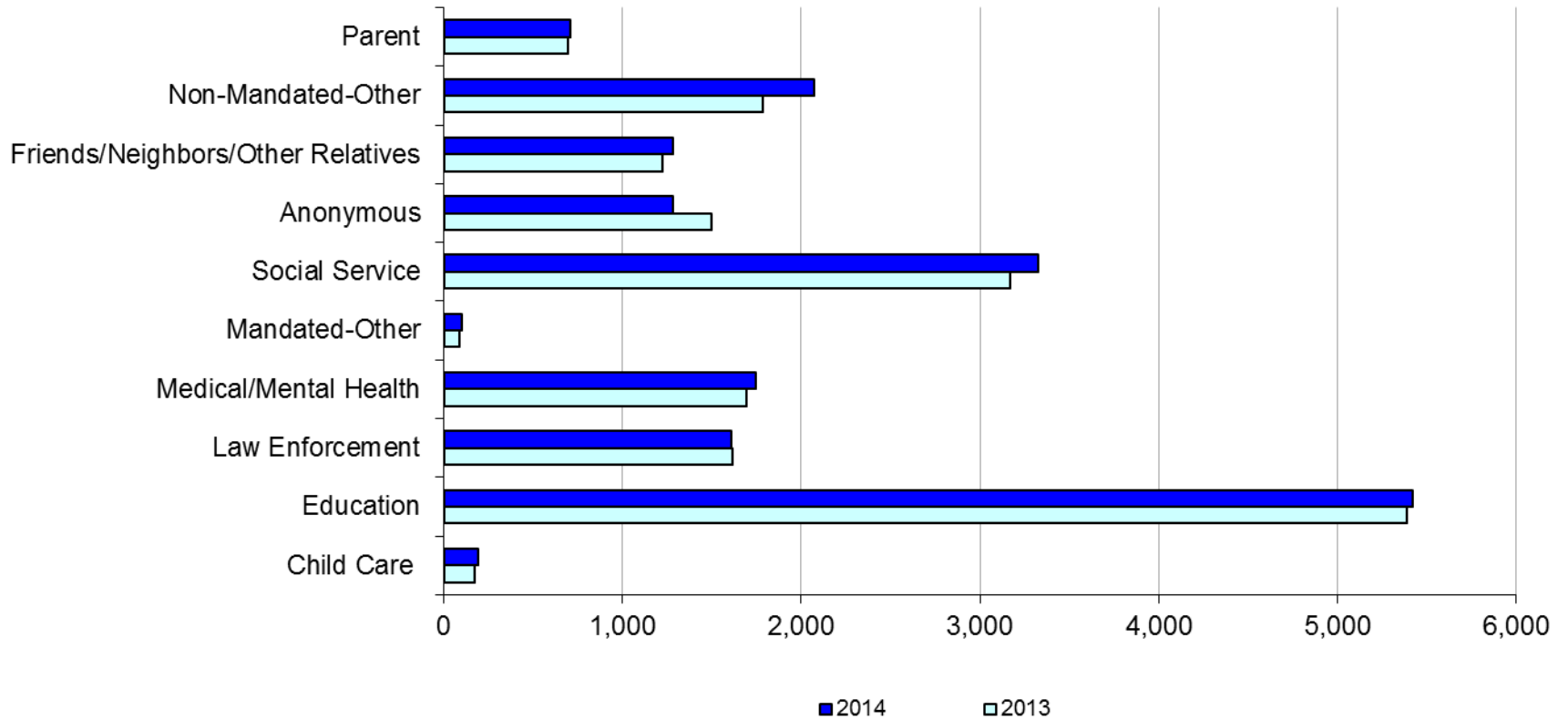
Figure 1: SCR Intakes by Borough, MAR 13 – MAY 13 and MAR 14 – MAY 14



**TABLE 1 - SCR Intake Changes by Borough, MAR 13 – MAY 13 and MAR 14 – MAY 14**

Month	Year	Bronx	Brooklyn	Manhattan	Queens	Staten Island	OSI	Other	Total
MAR	2013	1,591	1,516	841	1,008	287	142	121	5,506
	2014	2,000	1,821	834	1,276	297	161	135	6,524
	% Change	25.7%	20.1%	-0.8%	26.6%	3.5%	13.4%	11.6%	18.5%
APR	2013	1,689	1,609	788	1,070	236	123	160	5,675
	2014	1,598	1,424	684	856	225	148	142	5,077
	% Change	-5.4%	-11.5%	-13.2%	-20.0%	-4.7%	20.3%	-11.3%	-10.5%
MAY	2013	1,795	1,704	881	1,182	296	153	136	6,147
	2014	1,800	1,757	746	1,205	287	172	156	6,123
	% Change	0.3%	3.1%	-15.3%	1.9%	-3.0%	12.4%	14.7%	-0.4%
Total	2013	5,075	4,829	2,510	3,260	819	418	417	17,328
	2014	5,398	5,002	2,264	3,337	809	481	433	17,724
	% Change	6.4%	3.6%	-9.8%	2.4%	-1.2%	15.1%	3.8%	2.3%

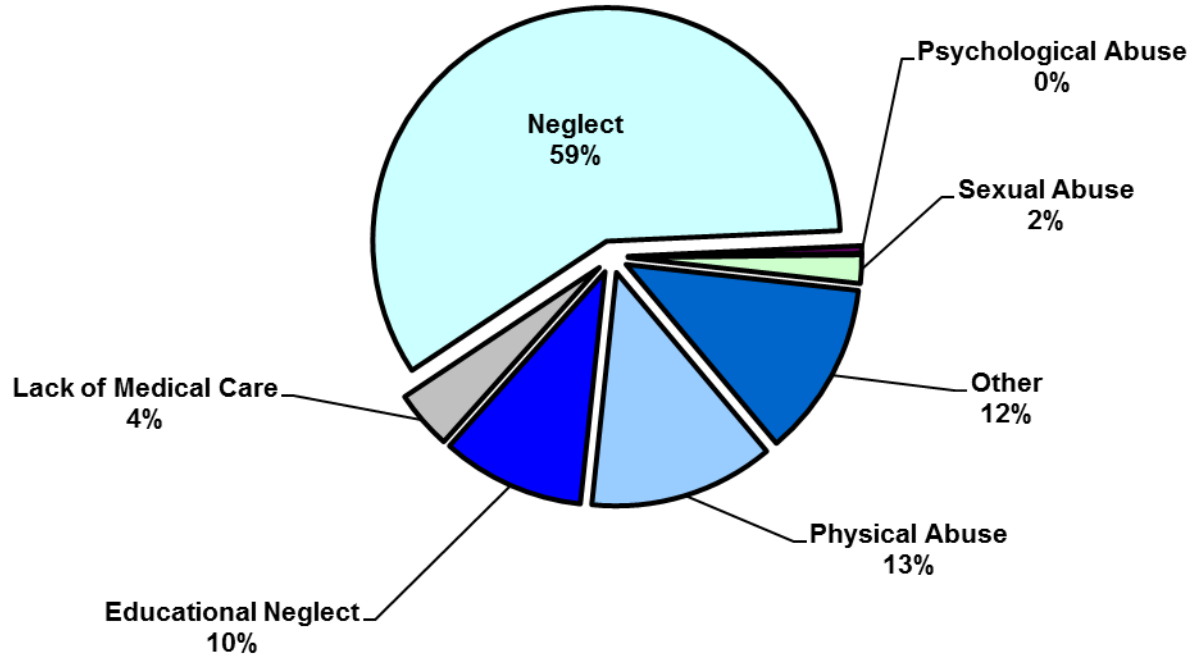
**Figure 2: Citywide SCR Intakes by Reporter Group, MAR 13 – MAY 13 and MAR 14 – MAY 14**



## TABLE 2 - SCR Intakes by Reporter Group, MAR 13 – MAY 13 and MAR 14 – MAY 14

Year	Child Care/ Substitute Care Personnel	Educational Personnel	Law Enforcement	Medical/ Mental Health Personnel	Mandated- Other	Social Service Personnel	Anonymous	Friends/ Neighbors/ Other Relatives	Non- Mandated- Other	Parent	Foster Parent	Total
<b>Bronx</b>												
2013	58	1,602	391	503	21	967	433	355	556	186	1	5,073
2014	64	1,736	420	512	27	1,063	365	395	614	204	0	5,400
% Change	10.3%	8.4%	7.4%	1.8%	28.6%	9.9%	-15.7%	11.3%	10.4%	9.7%	--	6.4%
<b>Brooklyn</b>												
2013	46	1,562	450	433	29	800	443	403	473	187	0	4,826
2014	37	1,606	432	476	23	854	406	384	590	196	0	5,004
% Change	-19.6%	2.8%	-4.0%	9.9%	-20.7%	6.8%	-8.4%	-4.7%	24.7%	4.8%	--	3.7%
<b>Manhattan</b>												
2013	28	691	294	239	19	479	219	167	282	88	2	2,508
2014	24	559	274	228	14	458	163	165	309	69	0	2,263
% Change	-14.3%	-19.1%	-6.8%	-4.6%	-26.3%	-4.4%	-25.6%	-1.2%	9.6%	-21.6%	-100.0%	-9.8%
<b>Queens</b>												
2013	19	1,142	324	320	10	597	271	186	276	115	0	3,260
2014	23	1,171	298	342	21	622	207	221	305	126	2	3,338
% Change	21.1%	2.5%	-8.0%	6.9%	110.0%	4.2%	-23.6%	18.8%	10.5%	9.6%	--	2.4%
<b>Staten Island</b>												
2013	3	305	59	78	3	115	92	65	65	34	0	819
2014	13	255	61	78	4	118	83	70	91	35	1	809
% Change	333.3%	-16.4%	3.4%	0.0%	33.3%	2.6%	-9.8%	7.7%	40.0%	2.9%	--	-1.2%
<b>OSI</b>												
2013	15	44	16	56	7	79	28	13	101	59	0	418
2014	30	48	26	58	8	80	36	29	118	48	0	481
% Change	100.0%	9.1%	62.5%	3.6%	14.3%	1.3%	28.6%	123.1%	16.8%	-18.6%	--	15.1%
<b>Other</b>												
2013	6	40	82	66	1	133	13	32	35	26	1	435
2014	3	46	100	49	1	128	24	17	47	30	0	445
% Change	-50.0%	15.0%	22.0%	-25.8%	0.0%	-3.8%	84.6%	-46.9%	34.3%	15.4%	--	2.3%
<b>Citywide</b>												
2013	175	5,386	1,616	1,695	90	3,170	1,499	1,221	1,788	695	4	17,339
2014	194	5,421	1,611	1,743	98	3,323	1,284	1,281	2,074	708	3	17,740
% Change	10.9%	0.6%	-0.3%	2.8%	8.9%	4.8%	-14.3%	4.9%	16.0%	1.9%	-25.0%	2.3%

**Figure 3: SCR Allegations, MAR 14 – MAY 14**



Total Allegations = 42,415



**TABLE 3 - SCR Allegations, MAR 13 - MAY 13 and MAR 14 - MAY 14**

Year	Physical Abuse	Educational Neglect	Lack of Medical Care	Neglect	Psychological Abuse	Sexual Abuse	Other	Total
<b>Bronx</b>								
2013	1,460	1,587	564	7,342	74	245	1,633	12,905
2014	1,534	1,583	605	7,785	64	216	1,623	13,410
% Change	5.1%	-0.3%	7.3%	6.0%	-13.5%	-11.8%	-0.6%	3.9%
<b>Brooklyn</b>								
2013	1,631	1,349	447	7,325	68	244	1,762	12,826
2014	1,635	1,376	496	7,399	59	239	1,495	12,699
% Change	0.2%	2.0%	11.0%	1.0%	-13.2%	-2.0%	-15.2%	-1.0%
<b>Manhattan</b>								
2013	674	545	225	3049	36	91	692	5,312
2014	539	478	208	2876	21	81	558	4,761
% Change	-20.0%	-12.3%	-7.6%	-5.7%	-41.7%	-11.0%	-19.4%	-10.4%
<b>Queens</b>								
2013	1,225	612	277	4,423	63	180	942	7,722
2014	1,232	589	282	4,424	61	174	919	7,681
% Change	0.6%	-3.8%	1.8%	0.0%	-3.2%	-3.3%	-2.4%	-0.5%
<b>Staten Island</b>								
2013	279	215	64	1,246	29	34	319	2,186
2014	232	149	60	1,193	5	31	306	1,976
% Change	-16.8%	-30.7%	-6.3%	-4.3%	-82.8%	-8.8%	-4.1%	-9.6%
<b>OSI</b>								
2013	263	43	56	1,203	15	53	209	1,842
2014	278	67	78	1,210	10	75	172	1,890
% Change	5.7%	55.8%	39.3%	0.6%	-33.3%	41.5%	-17.7%	2.6%
<b>Other</b>								
2013	129	57	46	639	4	34	200	1,109
2014	106	59	40	559	11	38	185	998
% Change	-17.8%	3.5%	-13.0%	-12.5%	175.0%	11.8%	-7.5%	-10.0%
<b>Citywide</b>								
2013	5,661	4,408	1,679	25,227	289	881	5,757	43,902
2014	5,556	4,301	1,769	25,446	231	854	5,258	43,415
% Change	-1.9%	-2.4%	5.4%	0.9%	-20.1%	-3.1%	-8.7%	-1.1%

TABLE 4 - Purchased Preventive Cases Opened and Closed  
January 2012 to May 2014

Month	Opened Cases	Closed Cases
<b>2012</b>		
Jan-12	870	629
Feb-12	889	835
Mar-12	944	991
Apr-12	997	870
May-12	1,117	979
Jun-12	965	869
Jul-12	853	979
Aug-12	917	1,007
Sep-12	727	900
Oct-12	875	915
Nov-12	738	702
Dec-12	938	871
<b>2013</b>		
Jan-13	960	884
Feb-13	873	916
Mar-13	962	1,171
Apr-13	940	988
May-13	864	1,337
Jun-13	863	780
Jul-13	868	1,004
Aug-13	802	1,084
Sep-13	844	724
Oct-13	933	765
Nov-13	901	685
Dec-13	1,106	552
<b>2014</b>		
Jan-14	983	640
Feb-14	987	679
Mar-14	1,146	874
Apr-14	1,074	896
May-14	1,042	888

**Table 5 - Referrals to Purchased Preventive Services by Source  
January 2012 to May 2014**

Month	Total Referrals	Division of Child Protection	Foster Care Agencies	PPRS Transfer	School	Self	Other Sources*
<b>2012</b>							
Jan-12	1,431	66.5%	0.7%	8.5%	3.6%	3.8%	17.0%
Feb-12	1,043	78.2%	1.1%	9.0%	1.9%	6.7%	3.1%
Mar-12	1,525	73.6%	0.9%	6.0%	1.8%	3.9%	13.8%
Apr-12	1,370	72.8%	1.0%	9.4%	1.2%	4.2%	11.4%
May-12	1,463	70.9%	1.0%	7.6%	1.1%	4.4%	15.0%
Jun-12	1,279	73.8%	0.5%	5.9%	1.0%	4.7%	14.2%
Jul-12	1,308	77.4%	1.2%	7.0%	0.3%	3.7%	10.5%
Aug-12	1,391	74.0%	0.9%	11.7%	0.3%	2.9%	10.2%
Sep-12	1,110	70.5%	1.9%	9.6%	1.2%	5.0%	11.9%
Oct-12	1,159	61.1%	1.4%	12.6%	2.7%	4.9%	17.3%
Nov-12	1,106	67.0%	1.0%	9.9%	2.2%	4.7%	15.3%
Dec-12	1,206	68.7%	0.8%	5.8%	2.7%	5.6%	16.4%
CY 2012	15,391	71.3%	1.0%	8.5%	1.6%	4.5%	13.1%
<b>2013</b>							
Jan-13	1,474	74.1%	1.2%	7.3%	1.2%	3.7%	12.5%
Feb-13	1,308	75.8%	1.1%	8.0%	1.6%	2.9%	10.6%
Mar-13	1,270	73.5%	1.2%	6.7%	2.4%	3.9%	12.3%
Apr-13	1,421	77.9%	0.8%	7.4%	0.9%	3.0%	10.1%
May-13	1,320	68.4%	0.5%	10.2%	1.5%	3.8%	15.5%
Jun-13	953	69.2%	1.2%	9.4%	2.6%	5.0%	12.6%
Jul-13	1,014	66.3%	1.9%	14.4%	1.6%	3.9%	11.9%
Aug-13	1,212	70.5%	0.7%	11.8%	0.7%	4.7%	11.6%
Sep-13	1,262	64.0%	2.1%	11.3%	1.7%	6.7%	14.2%
Oct-13	1,319	61.0%	1.1%	9.0%	2.9%	7.5%	18.5%
Nov-13	1,249	55.9%	1.6%	10.5%	4.6%	9.2%	18.3%
Dec-13	1,464	62.2%	1.2%	8.2%	2.3%	9.2%	17.0%
CY 2013	15,266	68.3%	1.2%	9.4%	2.0%	5.3%	13.8%
<b>2014</b>							
Jan-14	1,537	70.0%	1.2%	6.6%	2.3%	5.8%	14.2%
Feb-14	1,334	69.7%	0.8%	8.4%	1.7%	5.5%	13.9%
Mar-14	1,612	70.0%	1.4%	8.6%	1.6%	5.3%	13.1%
Apr-14	1,525	70.2%	0.9%	7.6%	2.1%	3.7%	15.4%
May-14	1,580	74.4%	0.7%	8.3%	1.4%	5.2%	10.0%

\*Other Community Sources includes the Department of Homeless Services, Family Court, FAP, Hospitals and Medical facilities, the NYC Housing Authority, PINS/DAS, Probation, and Sponsor Agencies.