

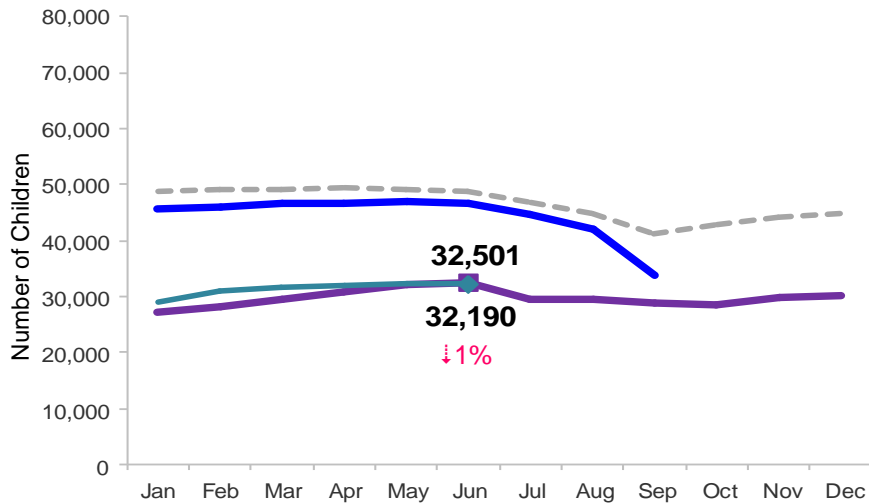


Flash

July 2014

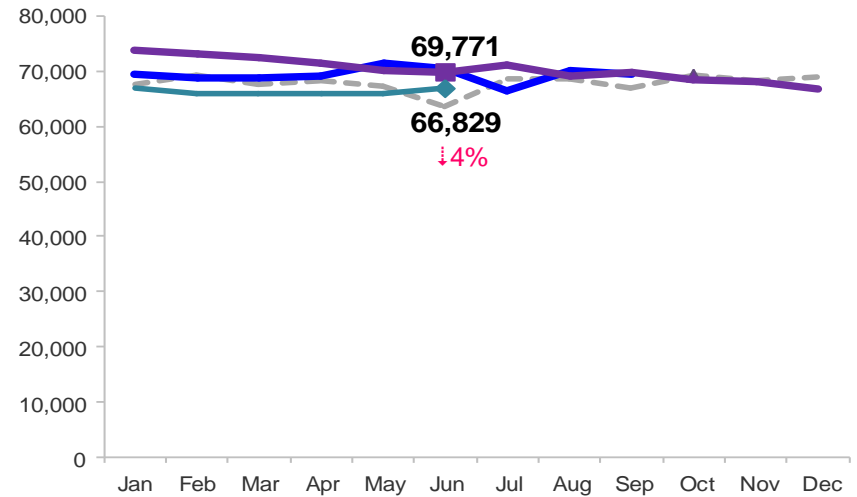
Children Enrolled in Contracted Early Learn Programs

January 2011 – June 2014 (End of Month)



Children Using Vouchers for Child Care

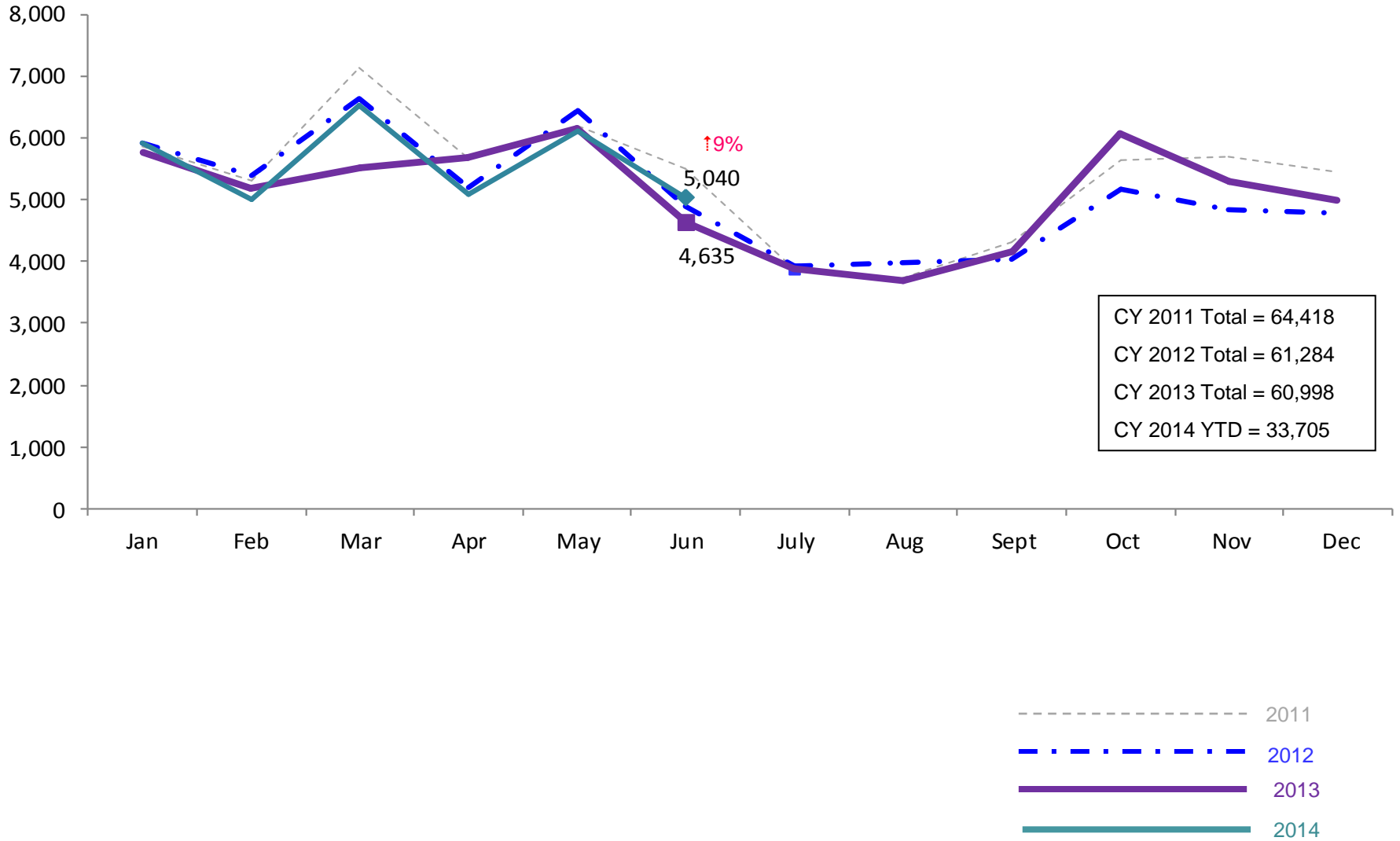
January 2011 – June 2014 (End of Month)



Notes: 1) Beginning October 1, 2012 ACS converted its early care and education system to a new model, Early Learn NYC. Enrollment data for the transitional months of October – December 2012 are not available because contractors were in the midst of implementing the data collection systems. 2) Percentage change is June 2013 vs. June 2014.

SCR Intakes

January 2011 – June 2014 (Monthly Total)

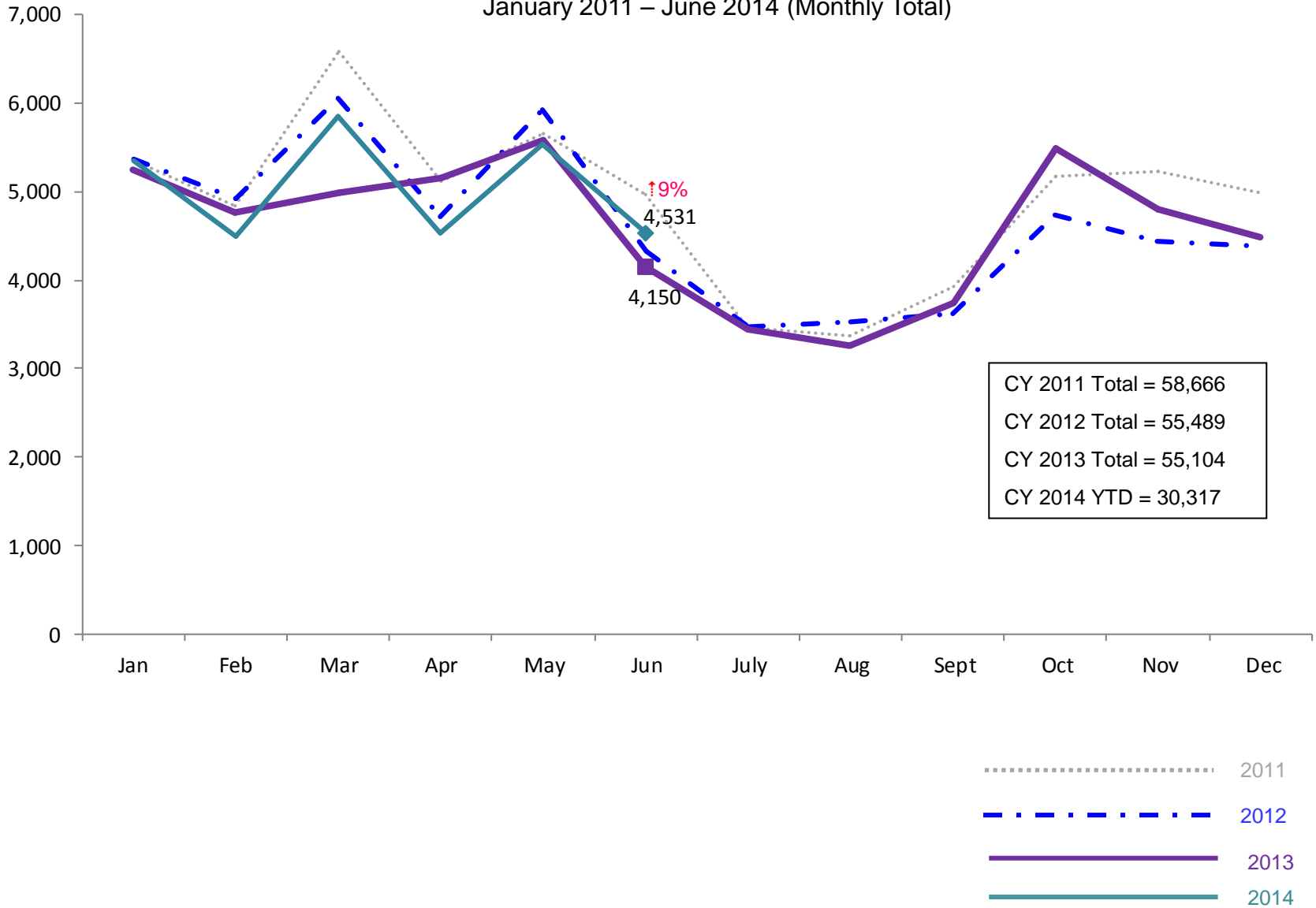


Note: Percentage change is June 2013 vs. June 2014.

See Pages 29 through 34 of the Appendix for supporting data.

SCR Consolidated Investigations

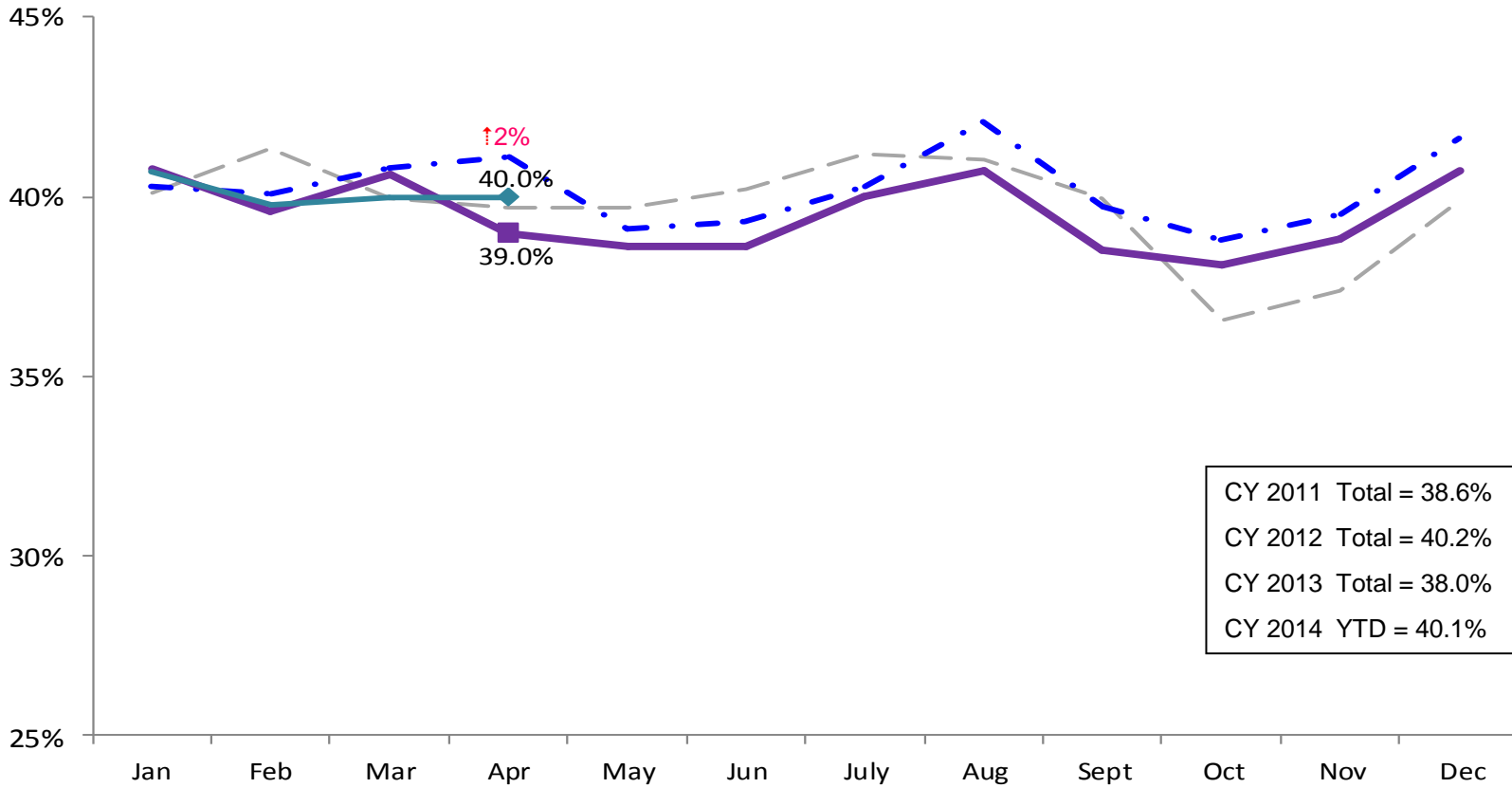
January 2011 – June 2014 (Monthly Total)



Note: Percentage change is June 2013 vs. June 2014.

SCR Investigation Indication Rate

January 2011 – April 2014



CY 2011 Total = 38.6%
 CY 2012 Total = 40.2%
 CY 2013 Total = 38.0%
 CY 2014 YTD = 40.1%

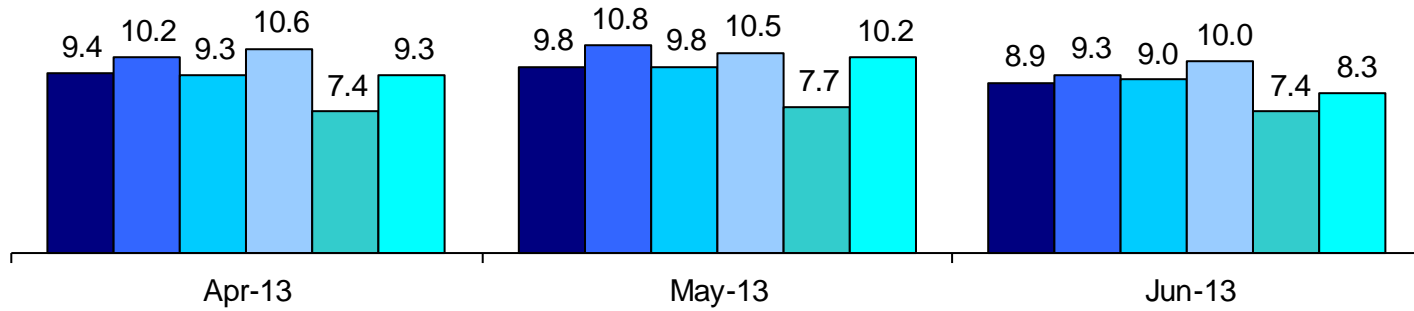


Note: Percentage change is April 2013 vs. April 2014.

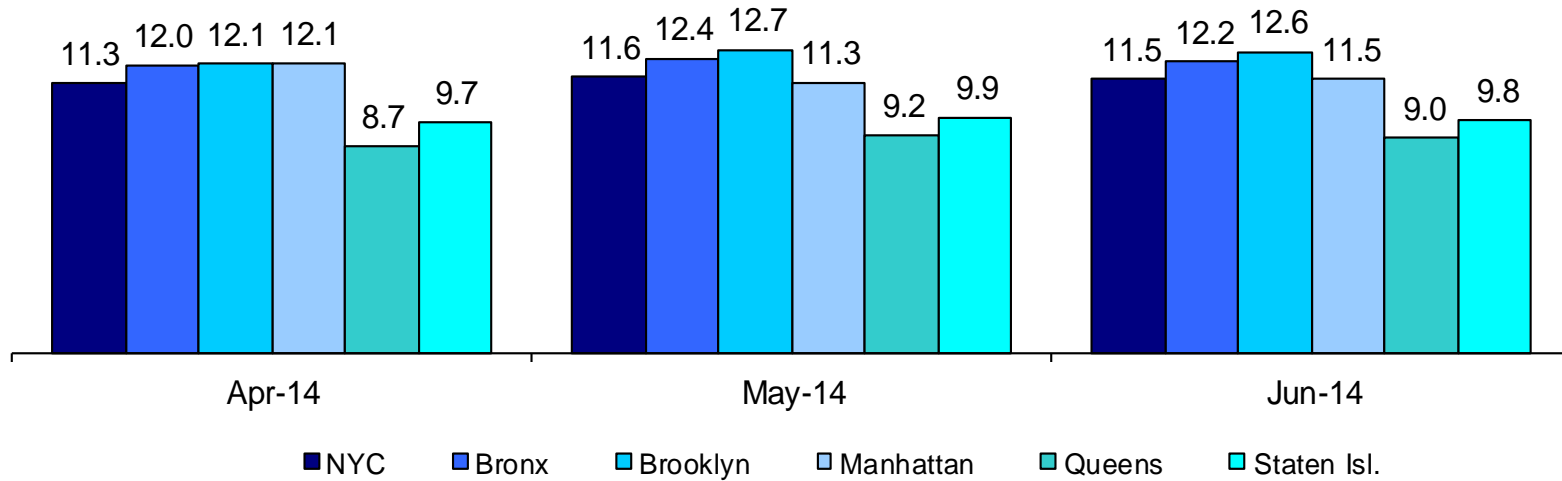
Average P/D Combined Caseload*

April 2013 – June 2013 & April 2014 – June 2014

2013



2014

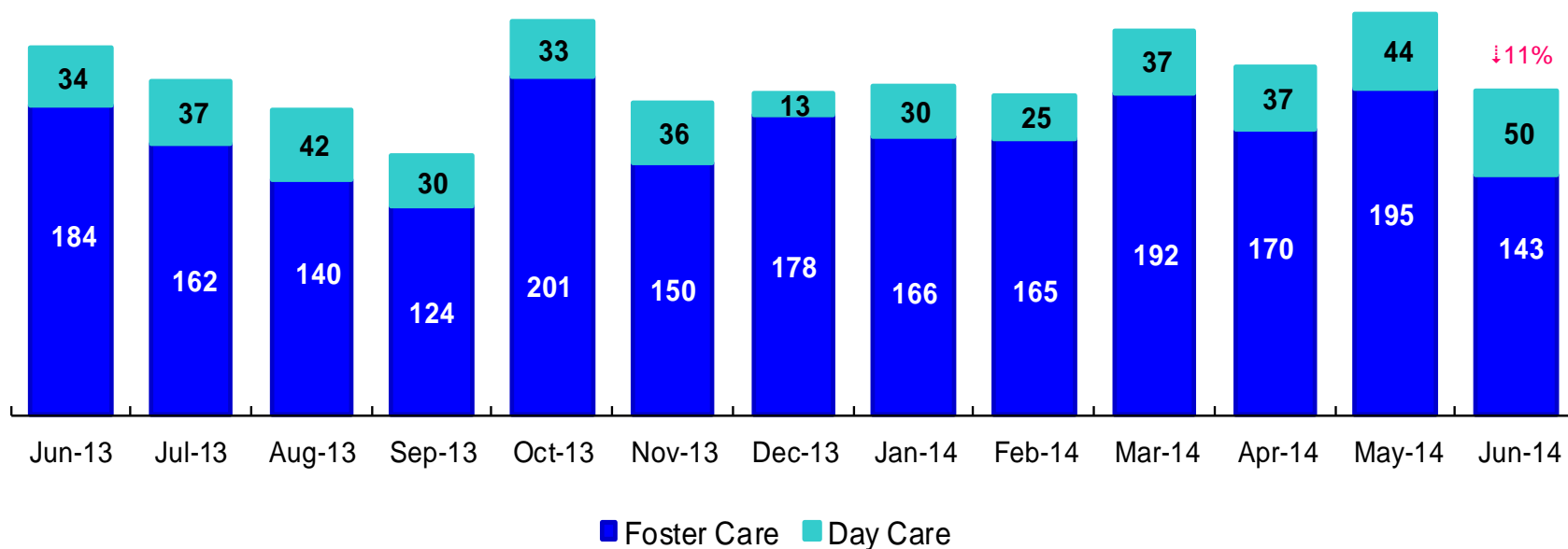


■ NYC ■ Bronx ■ Brooklyn ■ Manhattan ■ Queens ■ Staten Isl.

* Caseloads are of protective/diagnostic caseworkers only and exclude the caseloads carried by Level I and Level II Supervisors. 6

OSI Investigations by Program

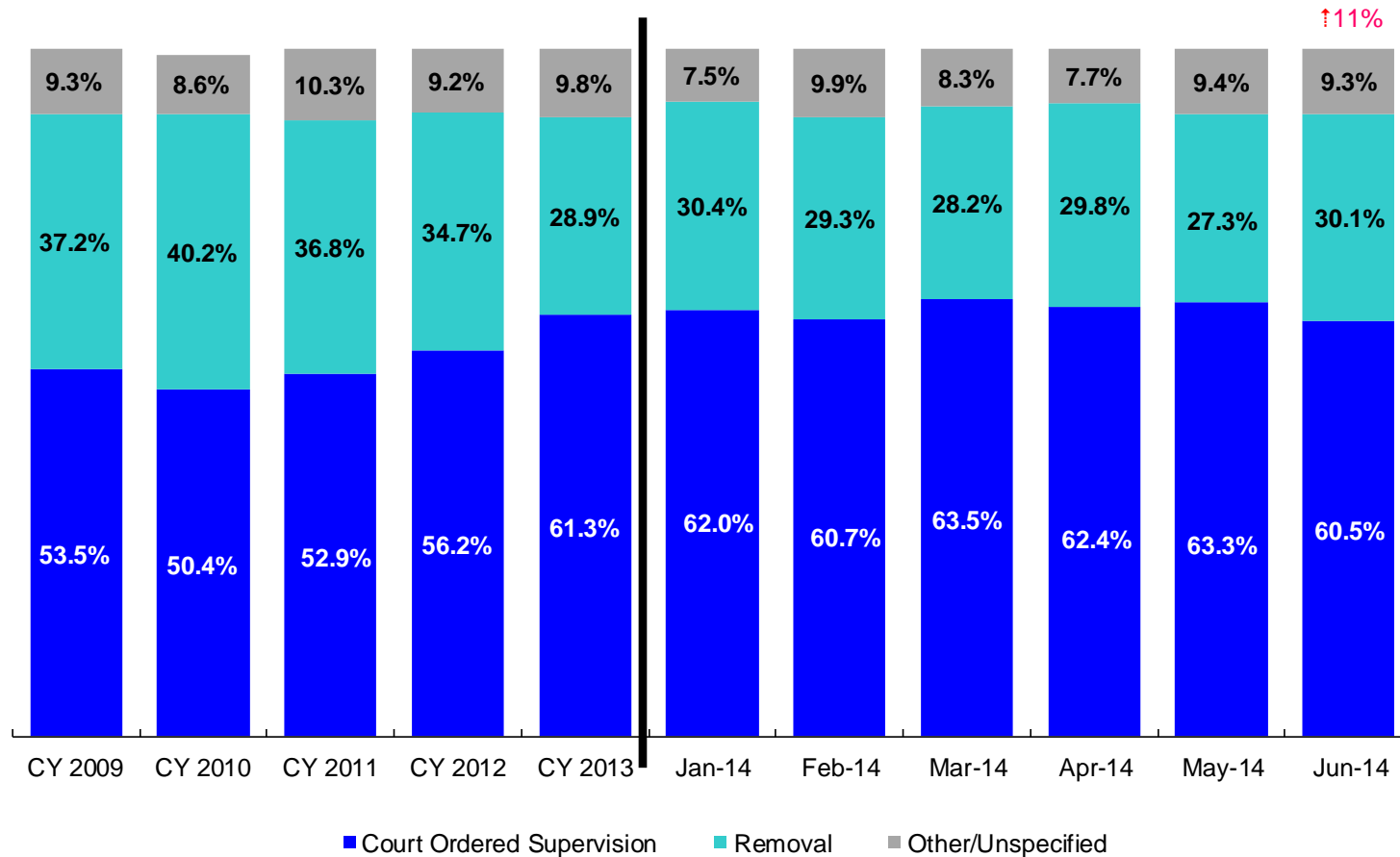
June 2013 – June 2014



	Jun 2013	Jul 2013	Aug 2013	Sep 2013	Oct 2013	Nov 2013	Dec 2013	Jan 2014	Feb 2014	Mar 2014	Apr 2014	May 2014	Jun 2014
Number of Investigations	218	199	182	154	234	186	191	196	190	229	207	239	193

Note: Percentage change is June 2013 vs. June 2014.

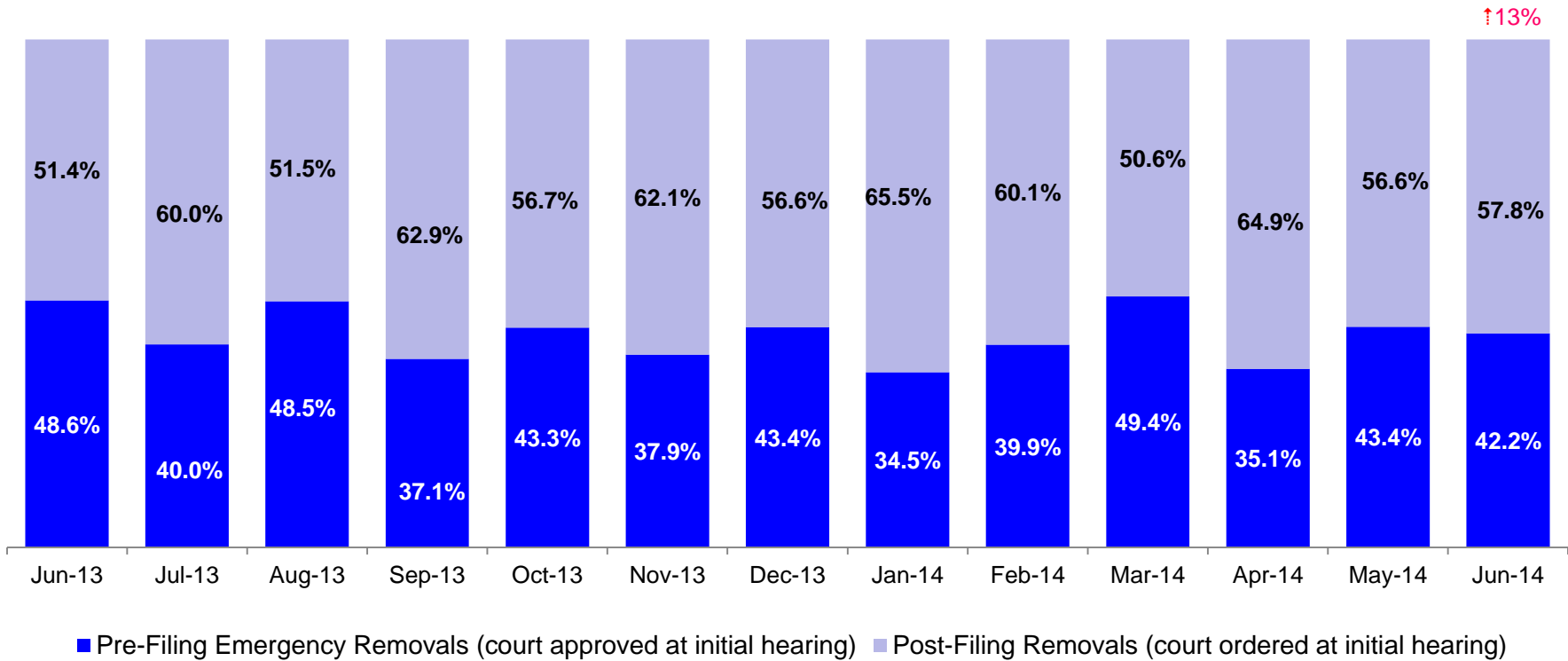
Article 10 Total Filings & Filing Outcomes, CY 2009 - CY 2013 and January – June 2014



	CY 2009	CY 2010	CY 2011	CY 2012	CY 2013	Jan 2014	Feb 2014	Mar 2014	Apr 2014	May 2014	June 2014
Art.10 Filings	11,568	10,093	9,596	8,913	9,318	743	828	905	801	978	826

Notes: 1) The category “Other/Unspecified” includes released with no supervision, no order issued and no outcome specified. Outcomes of cases heard the next day are not captured in this report. 2) Percentage change is June 2013 vs. June 2014.

Article 10 Filing Removals, June 2013 – June 2014



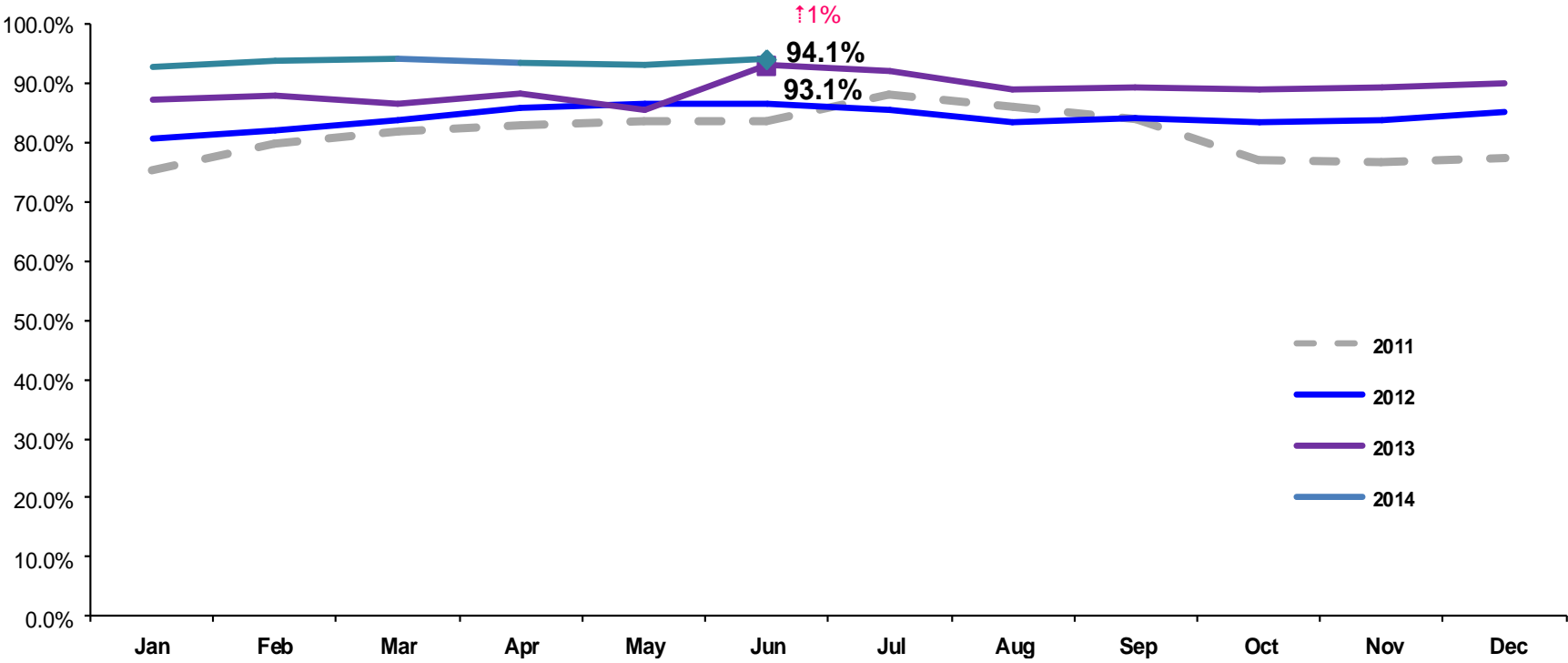
	Jun 2013	Jul 2013	Aug 2013	Sep 2013	Oct 2013	Nov 2013	Dec 2013	Jan 2014	Feb 2014	Mar 2014	Apr 2014	May 2014	June 2014
Number of Removals	220	220	200	229	261	224	212	226	243	255	239	267	249

Note: Percentage change is June 2013 vs. June 2014.

PPRS Utilization Rate

January 2011 – June 2014 (End of Month)

General Preventive



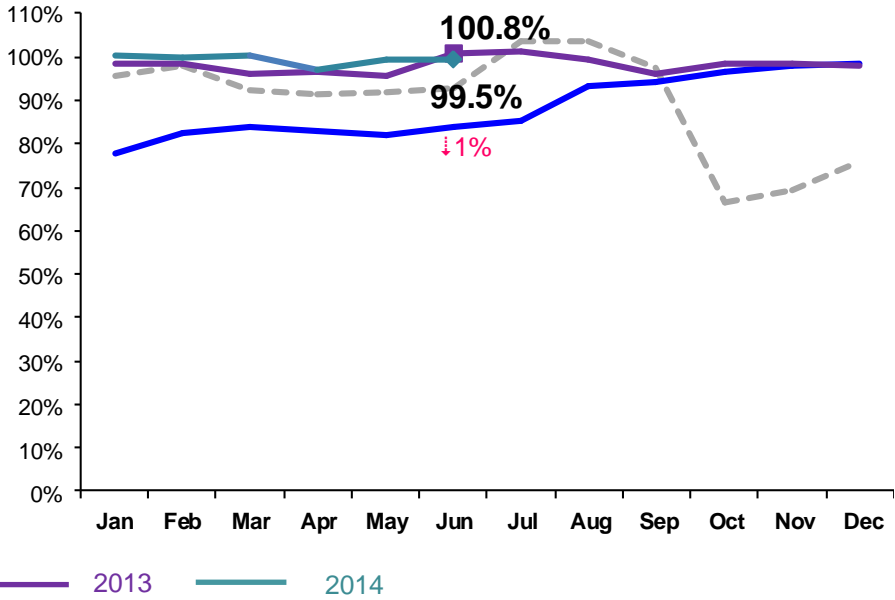
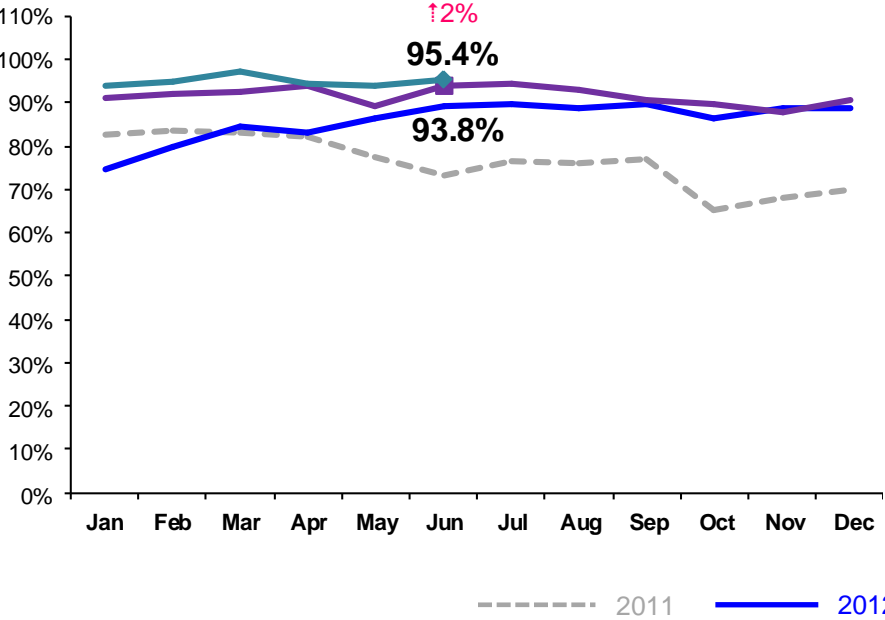
Notes: 1) Beacons programs are included in the GP utilization rates. 2) During February - June 2011 GP rates were adjusted by excluding programs in the process of being closed. GP rates were also adjusted during July – September 2011 by excluding newly opened programs. 3) During June-October 2013 GP programs in the process of converting to EBMs were excluded from the GP utilization statistics. 4) Percentage change is June 2013 vs. June 2014.

PPRS Utilization Rate

January 2011 – June 2014 (End of Month)

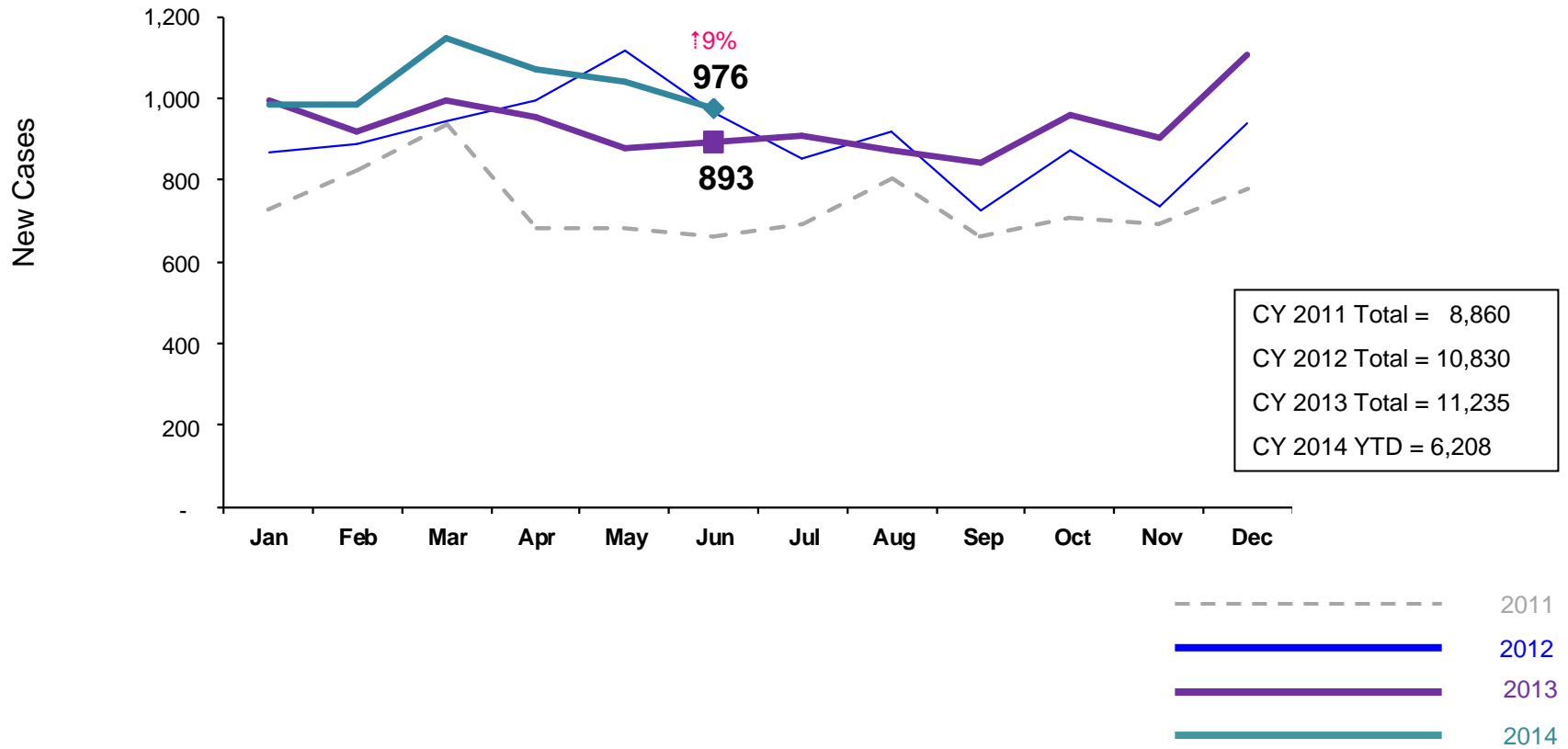
Family Rehabilitation Program/Family Treatment Rehabilitation

Medically Fragile



Notes: 1) During February - June 2011 FRP rates were adjusted by excluding programs in the process of being closed. FT/R rates were also adjusted during July – September 2011 by excluding newly opened programs. As of October 2011 all FT/R programs are included in the FT/R utilization rates. 2) Beginning July 2011 Family Treatment Rehabilitation programs replaced the Family Rehabilitation programs. 3) Beginning December 2011 the NYF Family Services for deaf Children and Adults program is no longer included in the medically fragile utilization rate. 4) During June -October 2013 FTR programs in the process of converting to EBMs were excluded from the FTR utilization statistics. 5) Percentage change is June 2013 vs. June 2014.

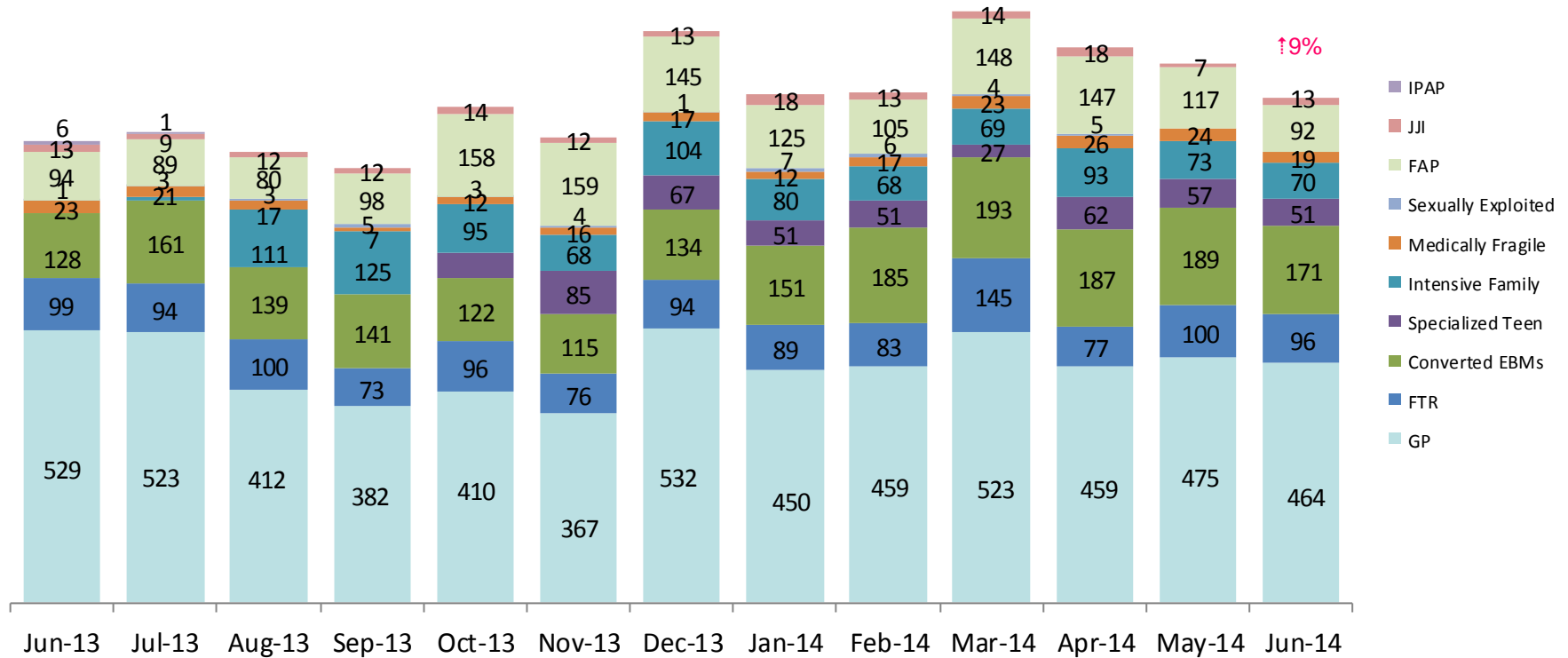
New Preventive Cases*
January 2011 – June 2014



*Notes: 1) New preventive cases do not include cases transferred from one preventive program to another. 2) Percentage change is June 2013 vs. June 2014. 3) See Pages 35 and 36 of the Appendix for supporting data.

New Preventive Cases* by Program Type

June 2013 – June 2014

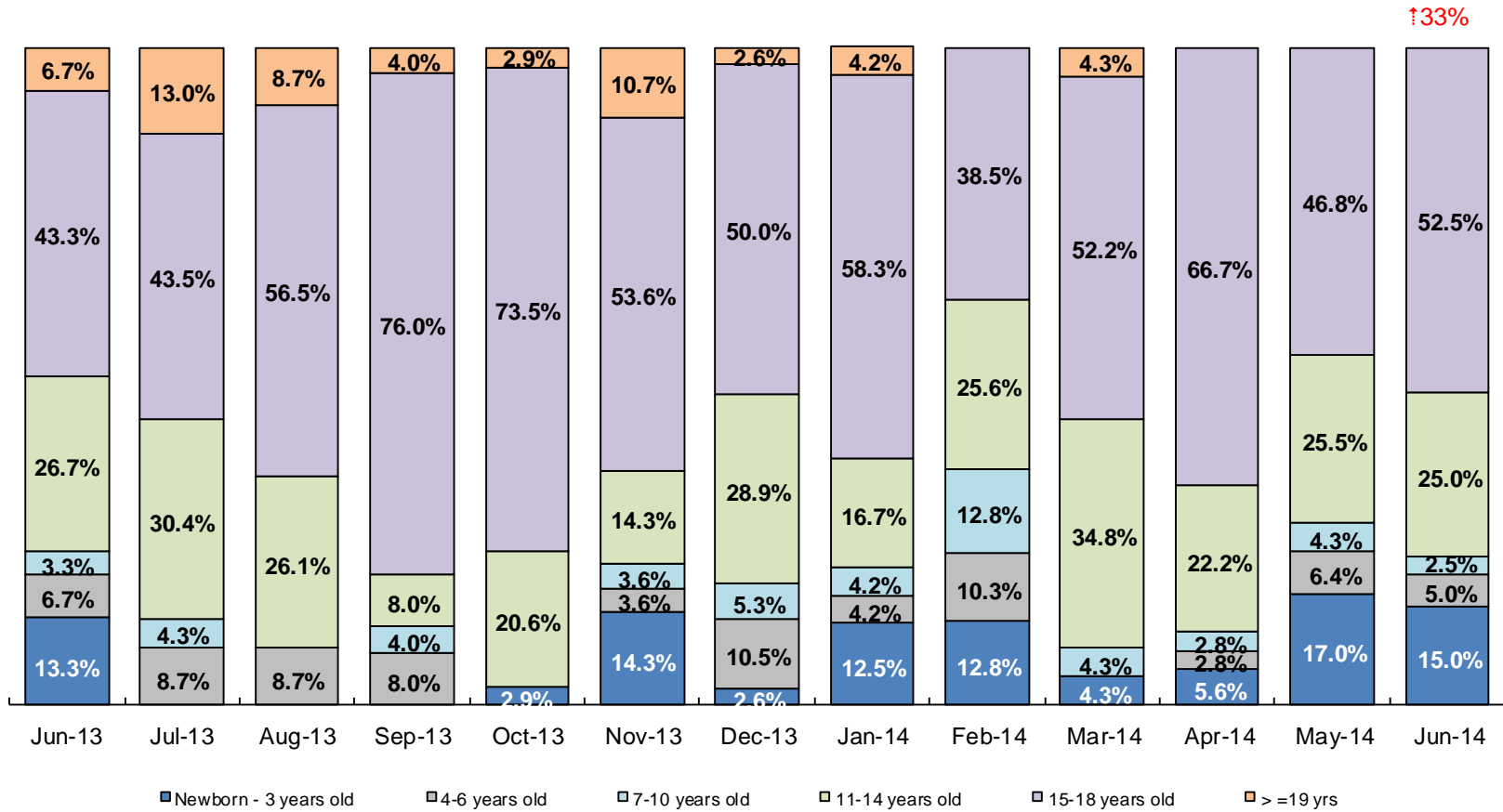


	Jun 2013	Jul 2013	Aug 2013	Sep 2013	Oct 2013	Nov 2013	Dec 2013	Jan 2014	Feb 2014	Mar 2014	Apr 2014	May 2014	Jun 2014
Number of New Preventive Cases	893	907	874	843	959	902	1,107	983	987	1,146	1,074	1,042	976

Notes: 1) New preventive cases do not include cases transferred from one preventive program to another. 2) Percentage change is June 2013 vs. June 2014.

Children's Center Population by Age

June 2013 – June 2014



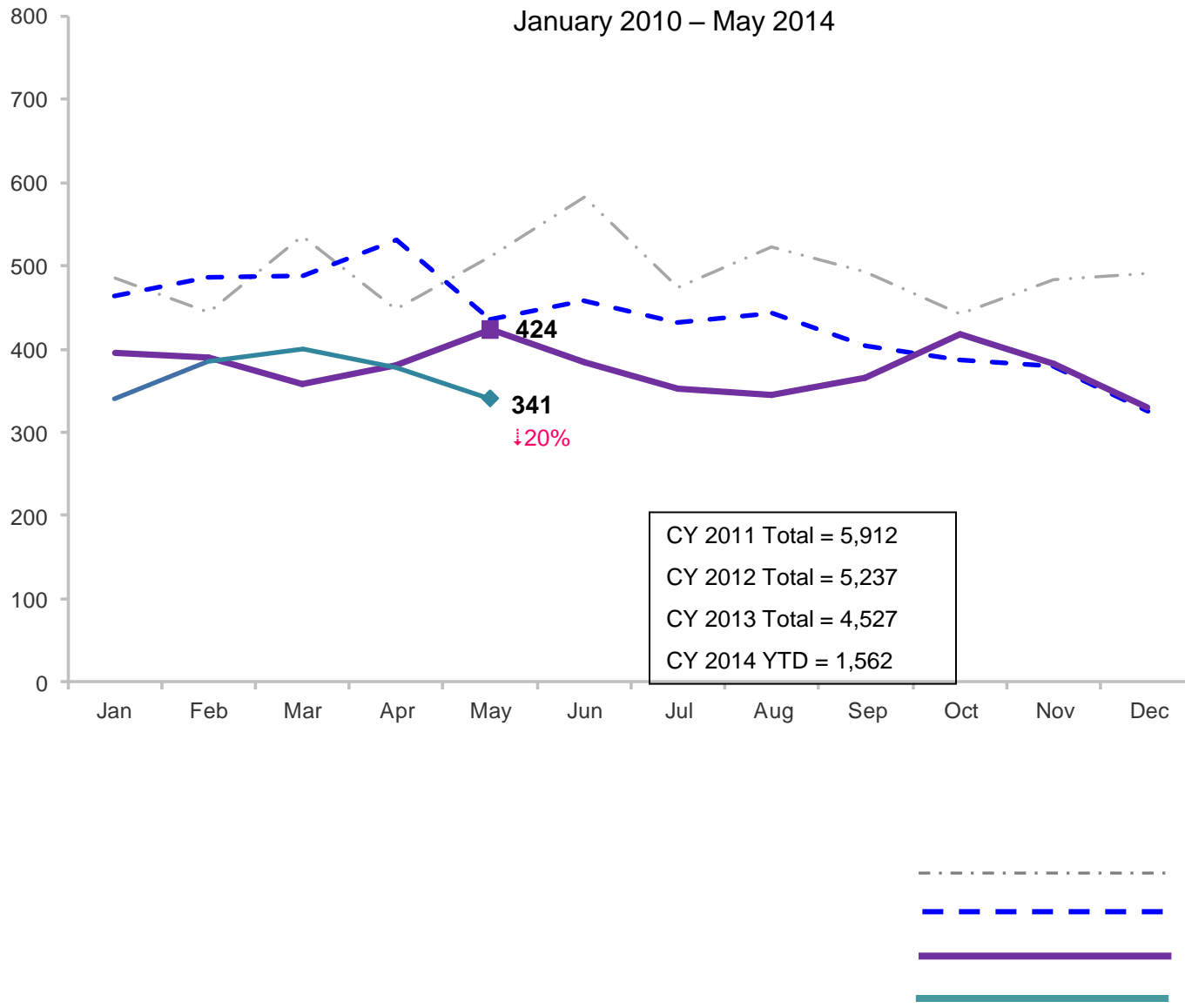
	Jun 2013	Jul 2013	Aug 2013	Sep 2013	Oct 2013	Nov 2013	Dec 2013	Jan 2014	Feb 2014	Mar 2014	Apr 2014	May 2014	Jun 2014
Number of Children	30	23	23	25	34	28	38	24	39	23	36	47	40

↑33%

Note: Percentage change is June 2013 vs. June 2014.

Total Monthly Placements

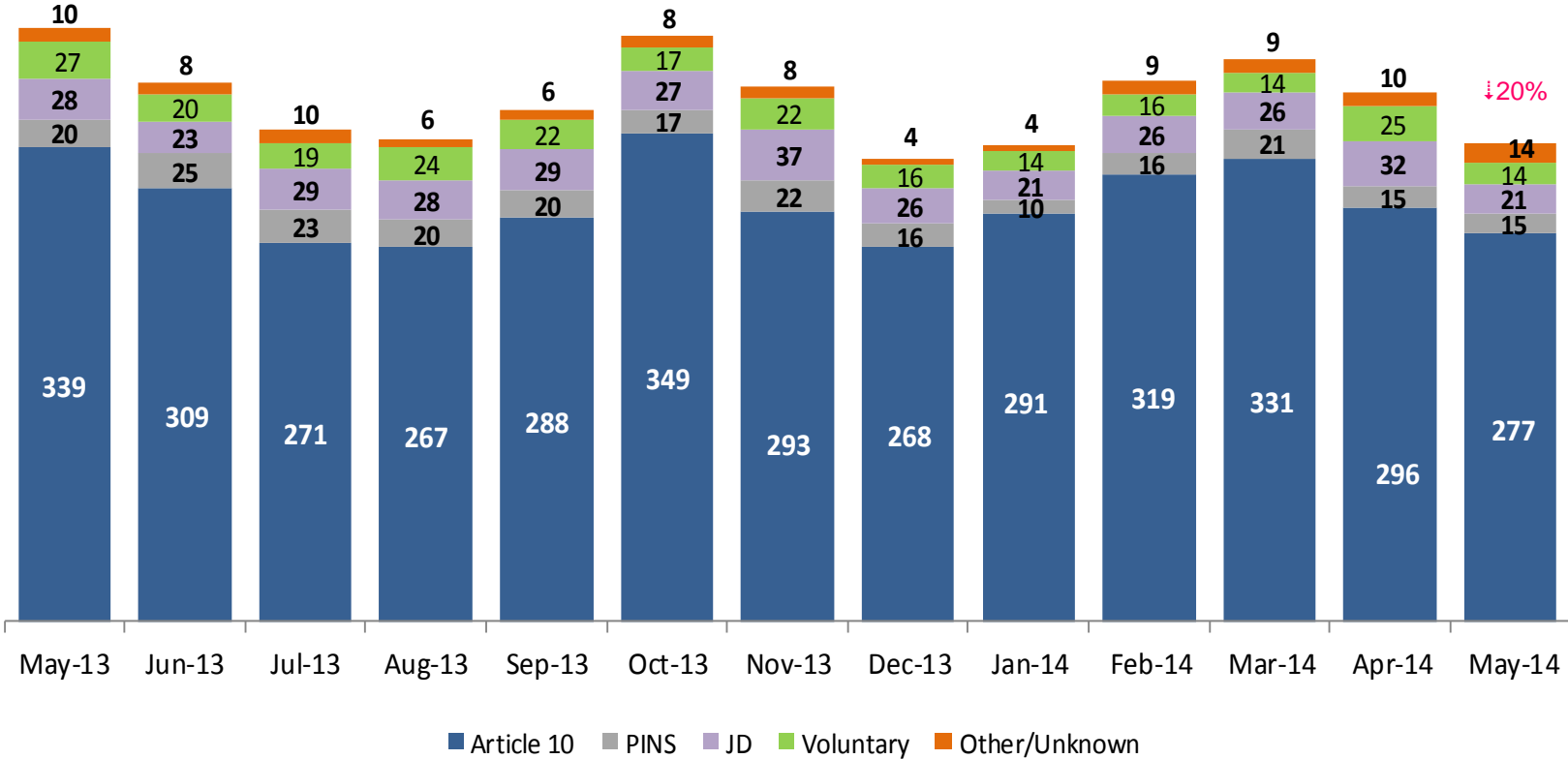
January 2010 – May 2014



Note: Percentage change is May 2013 vs. May 2014.

Reason for Initial Placements into Foster Care

May 2013 – May 2014

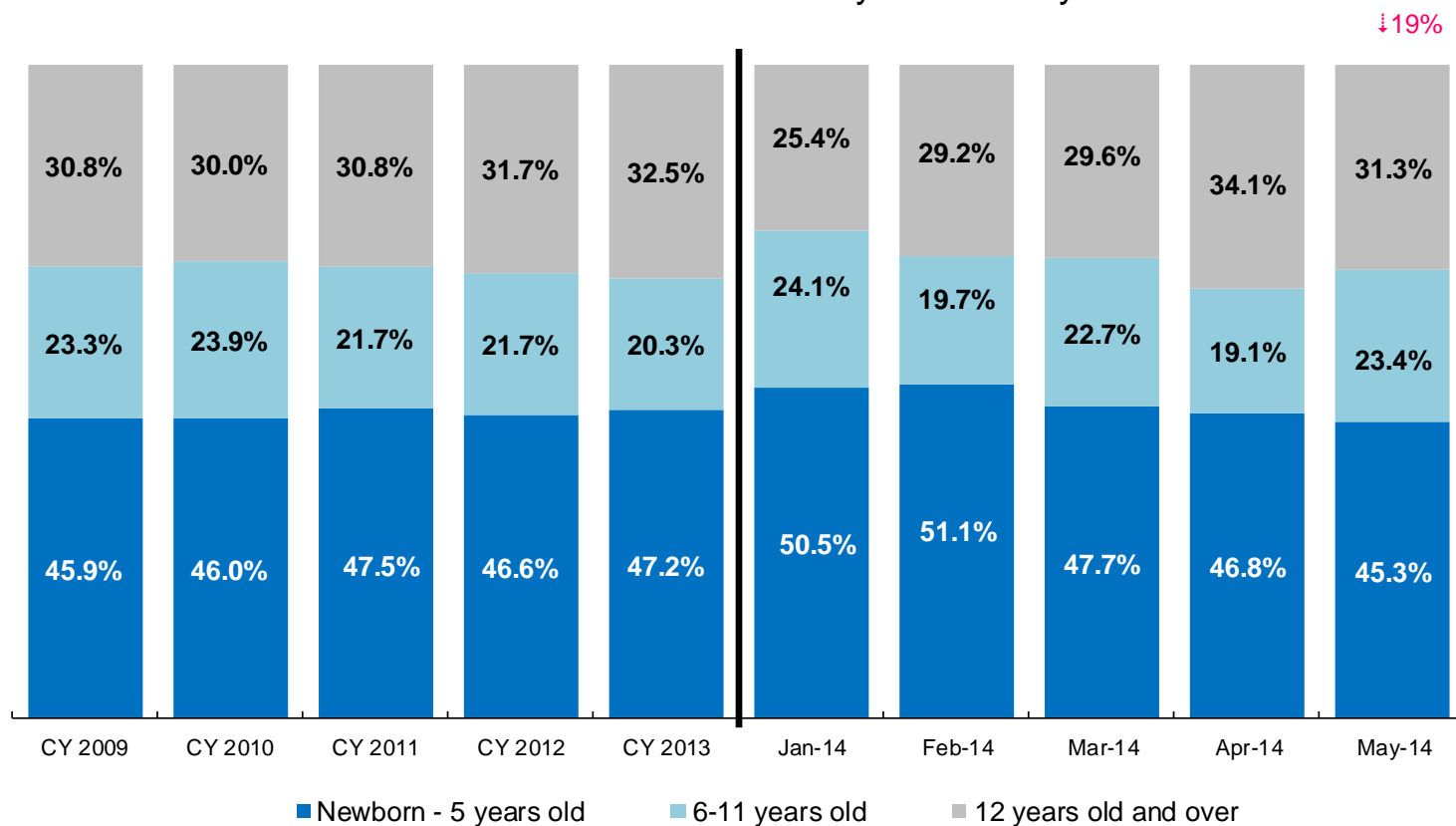


	May 2013	Jun 2013	Jul 2013	Aug 2013	Sep 2013	Oct 2013	Nov 2013	Dec 2013	Jan 2014	Feb 2014	Mar 2014	April 2014	May 2014
Number of Placements	424	385	352	345	365	418	382	330	340	386	401	378	341

Note: Percentage change is May 2013 vs. May 2014.

Placements* by Age

CY 2009 – CY 2013 and January 2014 – May 2014

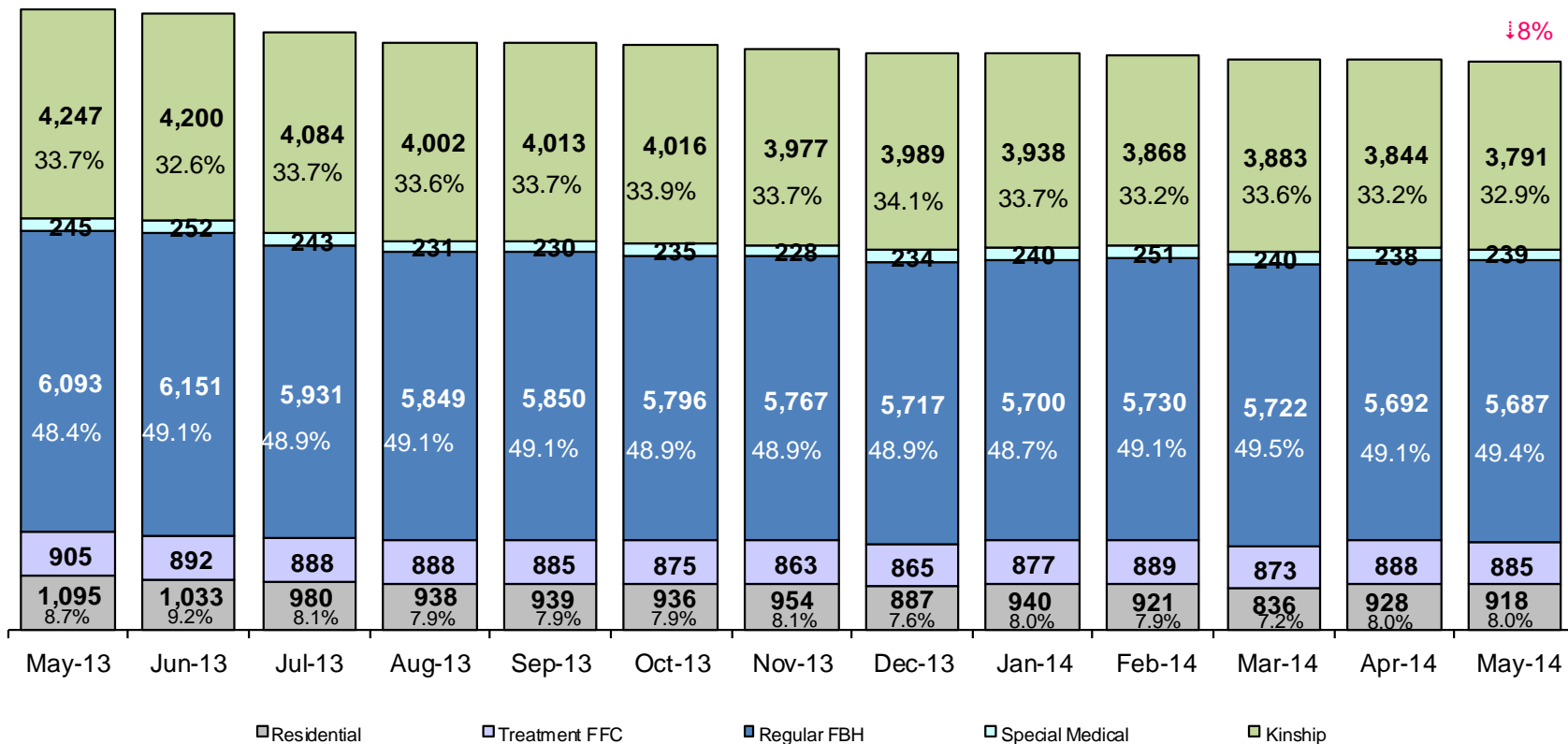


	CY 2008	CY 2009	CY 2010	CY 2011	CY 2012	CY 2013	Jan 2014	Feb 2014	Mar 2014	Apr 2014	May 2014
Placements	4,764	5,657	5,842	4,941	4,823	4,170	319	360	375	346	320

*Excludes JD placements.

Note: Percentage change is May 2013 vs. May 2014.

Children in Foster Care* May 2013 – May 2014 (end of month)

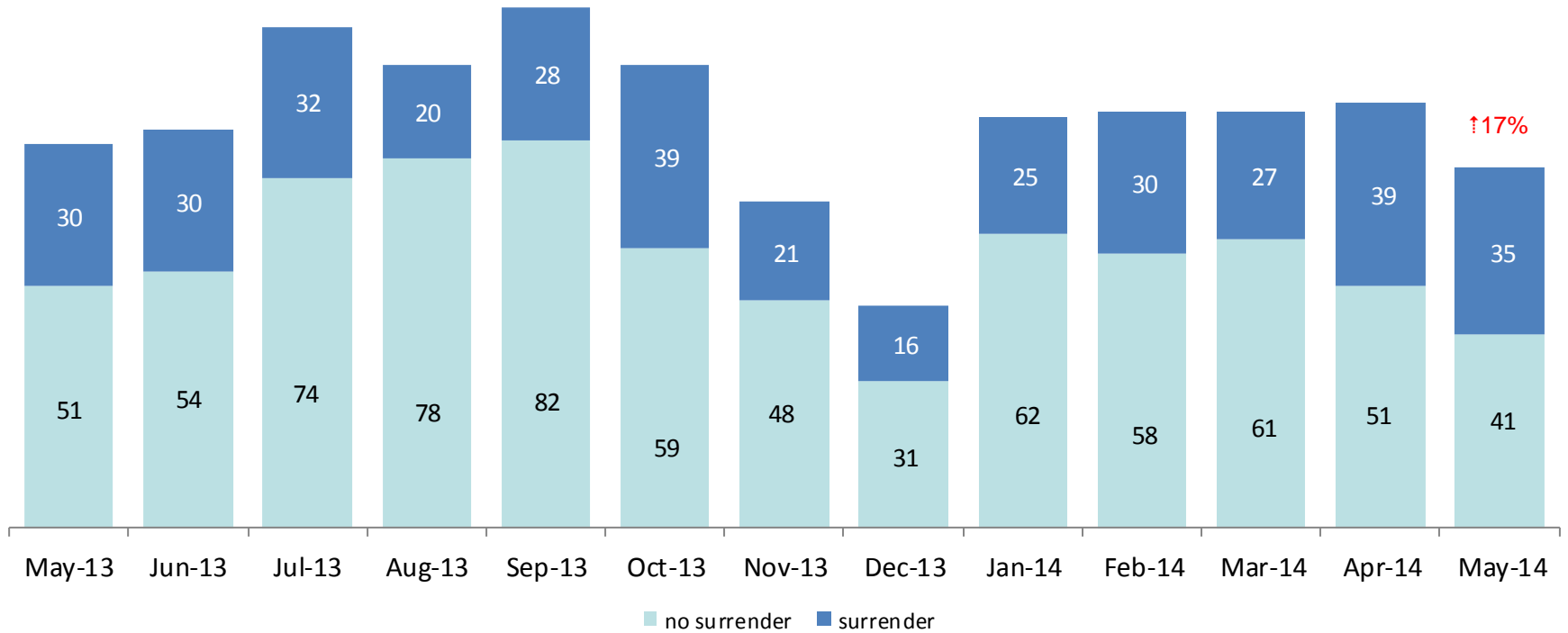


	May 2013	Jun 2013	Jul 2013	Aug 2013	Sep 2013	Oct 2013	Nov 2013	Dec 2013	Jan 2014	Feb 2014	Mar 2014	Apr 2014	May 2014
Number in Foster Care	12,585	12,528	12,126	11,908	11,917	11,858	11,789	11,692	11,695	11,659	11,554	11,590	11,520

*Excludes JD placements and includes approximately 400 young children who are living in foster homes or residential care facilities with their mothers who are in foster care (8D children).

Note: Percentage change is May 2013 vs. May 2014.

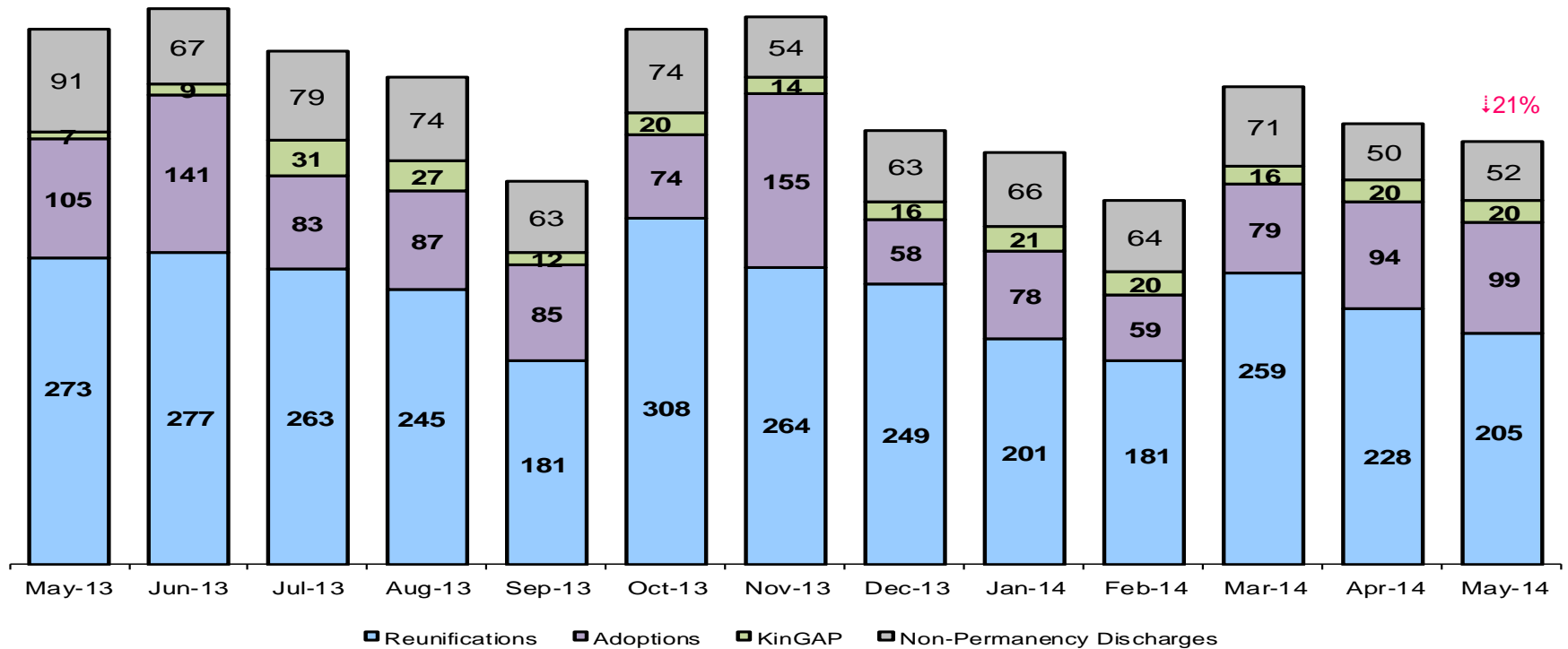
Children Freed for Adoption, Surrender by at Least One Parent May 2013 – May 2014



	May 2013	Jun 2013	Jul 2013	Aug 2013	Sep 2013	Oct 2013	Nov 2013	Dec 2013	Jan 2014	Feb 2014	Mar 2014	Apr 2014	May 2014
Number Freed for Adoption	81	84	106	98	110	98	69	47	87	88	88	90	76

Note: Percentage change is for the number of children surrendered by at least on parent during May 2013 vs. May 2014.

Permanency and Non-Permanency* Discharges from Foster Care** May 2013 – May 2014



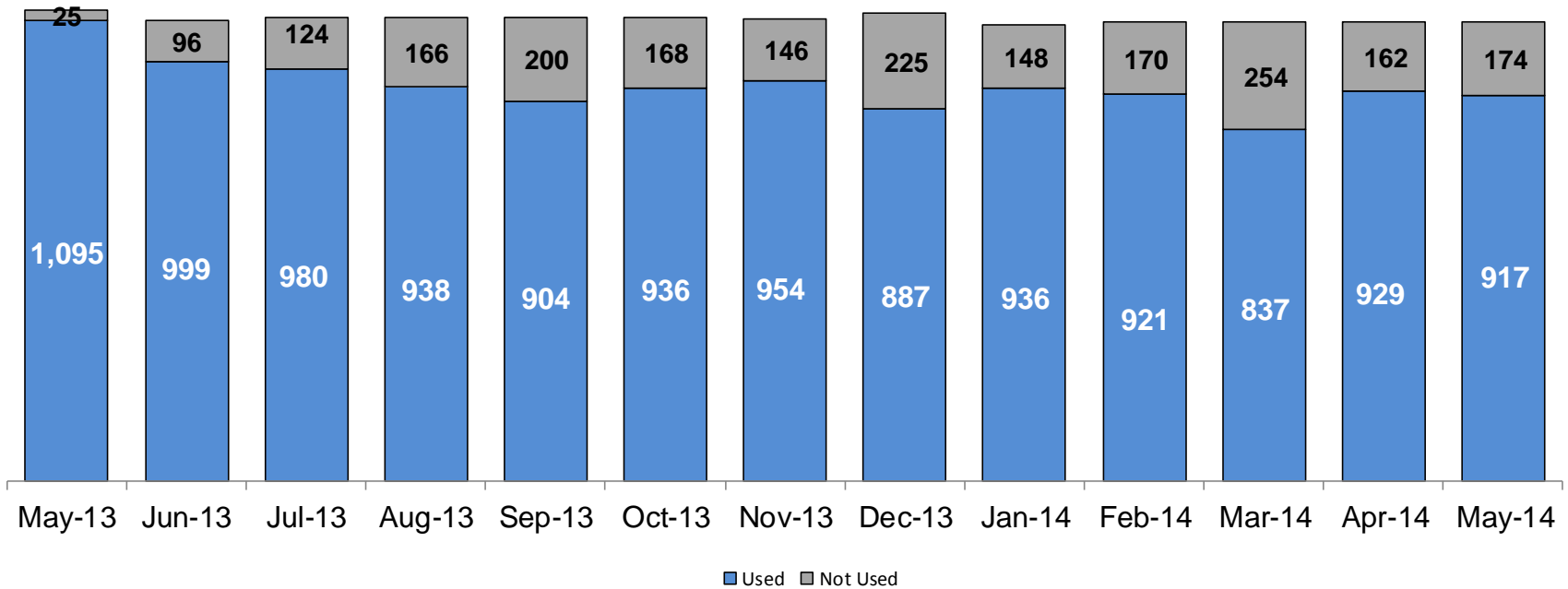
	May 2013	Jun 2013	Jul 2013	Aug 2013	Sep 2013	Oct 2013	Nov 2013	Dec 2013	Jan 2014	Feb 2014	Mar 2014	Apr 2014	May 2014
Number of Discharges	476	494	456	433	341	476	487	386	366	324	425	392	376

*Non-permanency discharges include AWOL, APPLA as well as other discharge destinations such as mental institutions and correctional facilities and discharges with unspecified destinations.

**Excludes discharges of youth who were in JD status at any time during their foster care spell.

Note: Percentage change is May 2013 vs. May 2014.

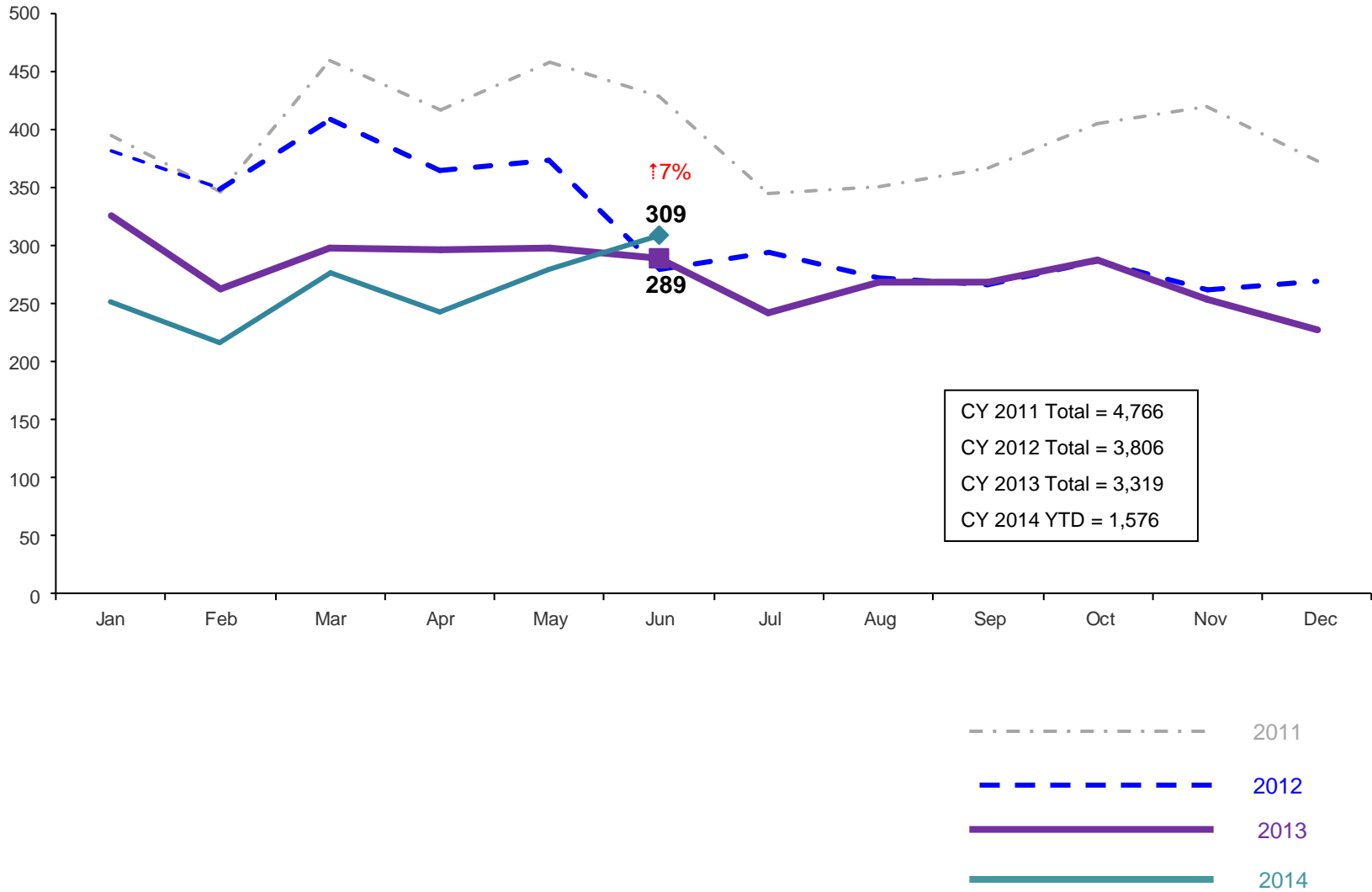
Residential Care Capacity and Utilization, May 2013 – May 2014



	Apr 2013	May 2013	Jun 2013	Jul 2013	Aug 2013	Sep 2013	Oct 2013	Nov 2013	Dec 2013	Jan 2014	Feb 2014	Mar 2014	Apr 2014	May 2014
Capacity	1,120	1,120	1,095	1,104	1,104	1,104	1,104	1,100	1,112	1,084	1,091	1,091	1,091	1,091

Total Monthly Admissions to Detention

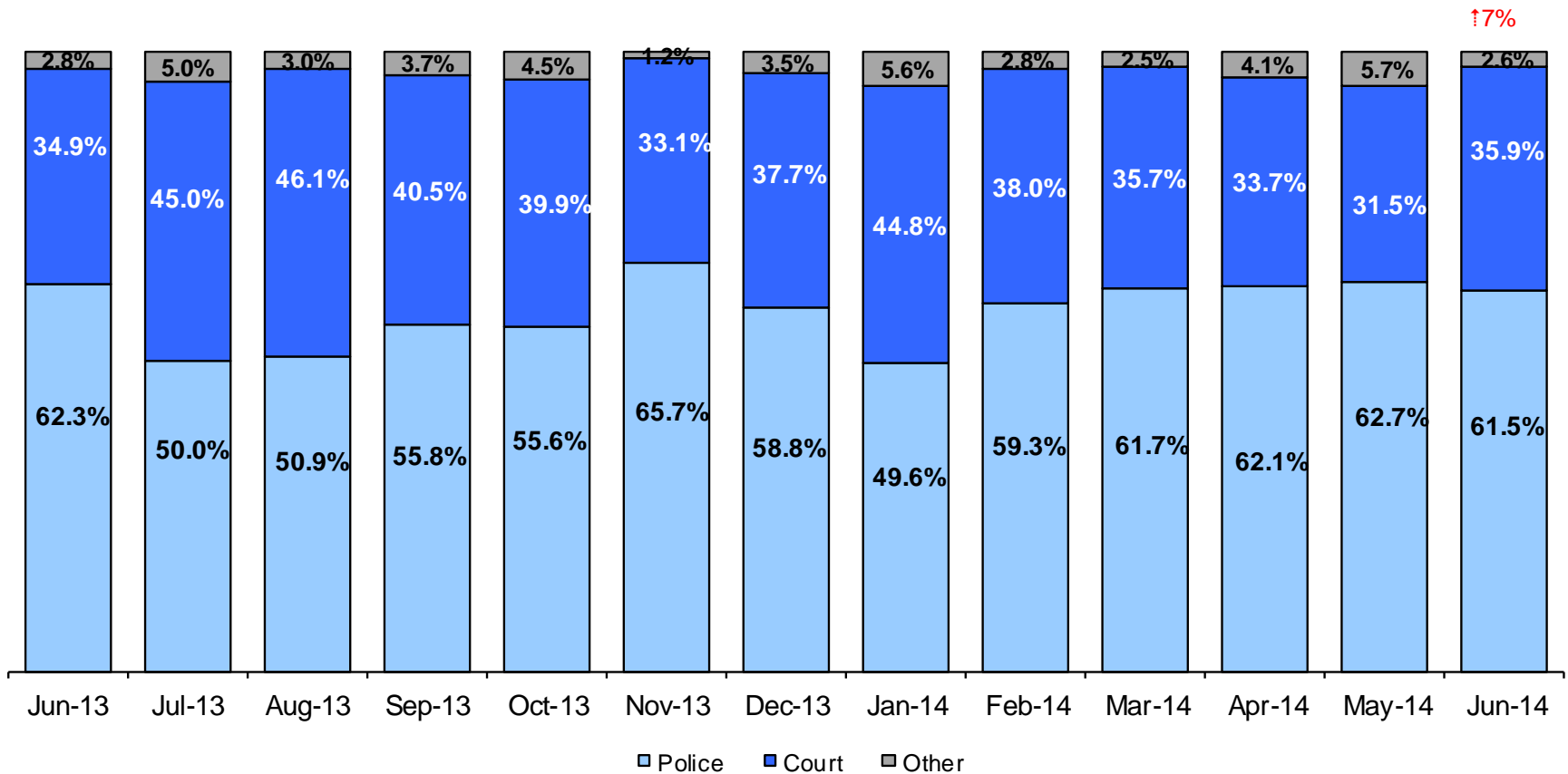
January 2011 – June 2014 (Monthly Total)



Note: Percentage change is June 2013 vs. June 2014.

Admit Authority on Admissions

June 2013 - June 2014 (Monthly Total)



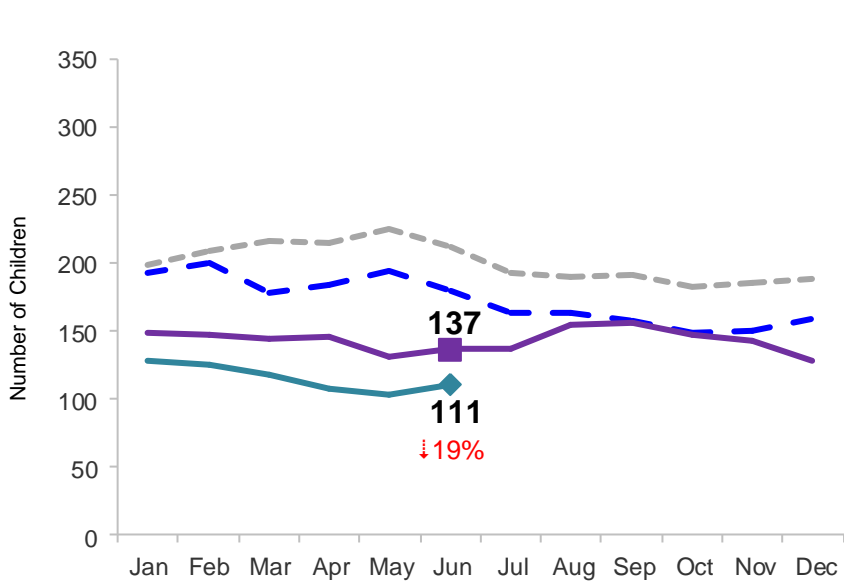
	Jun 2013	Jul 2013	Aug 2013	Sep 2013	Oct 2013	Nov 2013	Dec 2013	Jan 2014	Feb 2014	Mar 2014	Apr 2014	May 2014	Jun 2014
Number of Admissions	289	242	269	269	288	254	228	252	216	277	243	279	309

Notes: 1) Other Admit Authority includes the Sheriff Department, Department of Corrections and ACS. 2) Percentage change is June 2013 vs. June 2014.

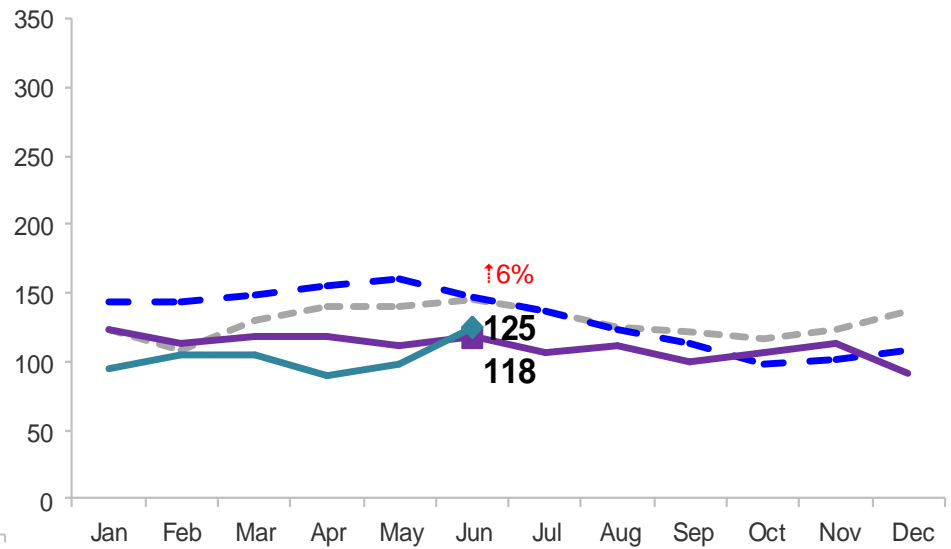
Monthly Average Daily Population

January 2011 – June 2014

Secure Detention



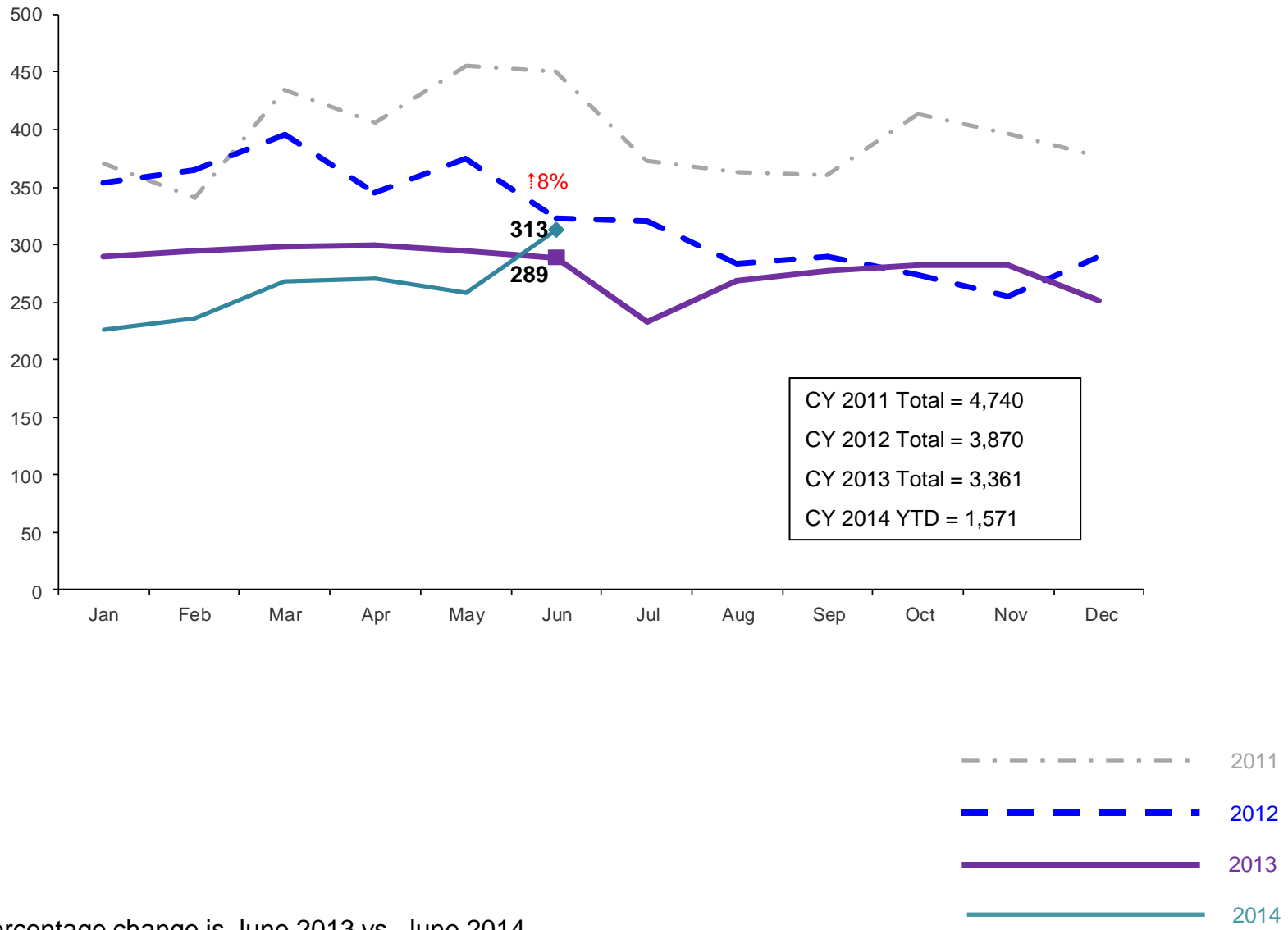
Non-Secure Detention



Note: Percentage change is June 2013 vs. June 2014.

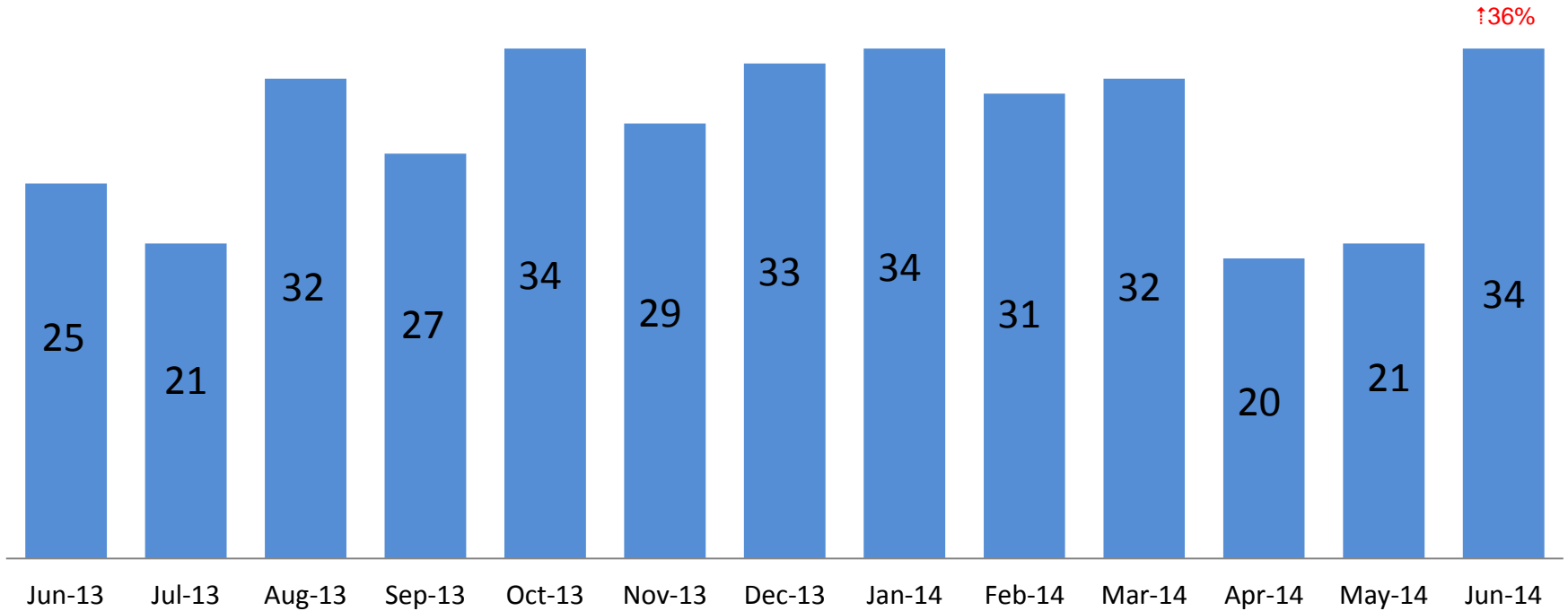
Total Monthly Releases from Detention

January 2011 – June 2014 (Monthly Total)



Note: Percentage change is June 2013 vs. June 2014.

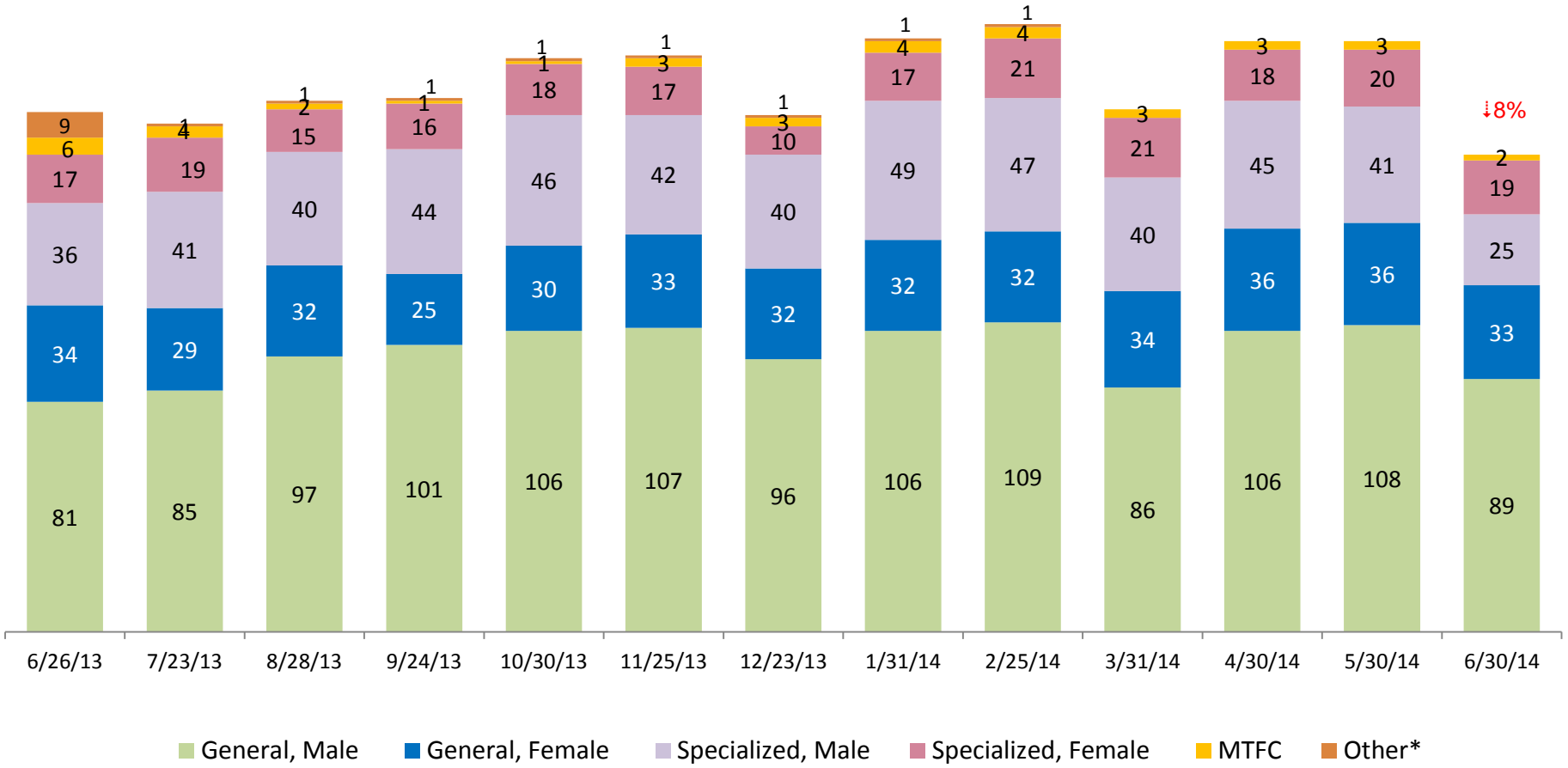
ACS NSP Intakes June 2013 – June 2014



Note: Percentage change is June 2013 vs. June 2014.

ACS Non-Secure Placement, in 24 hour Care

June 2013 – June 2014 (Point-in-Time)



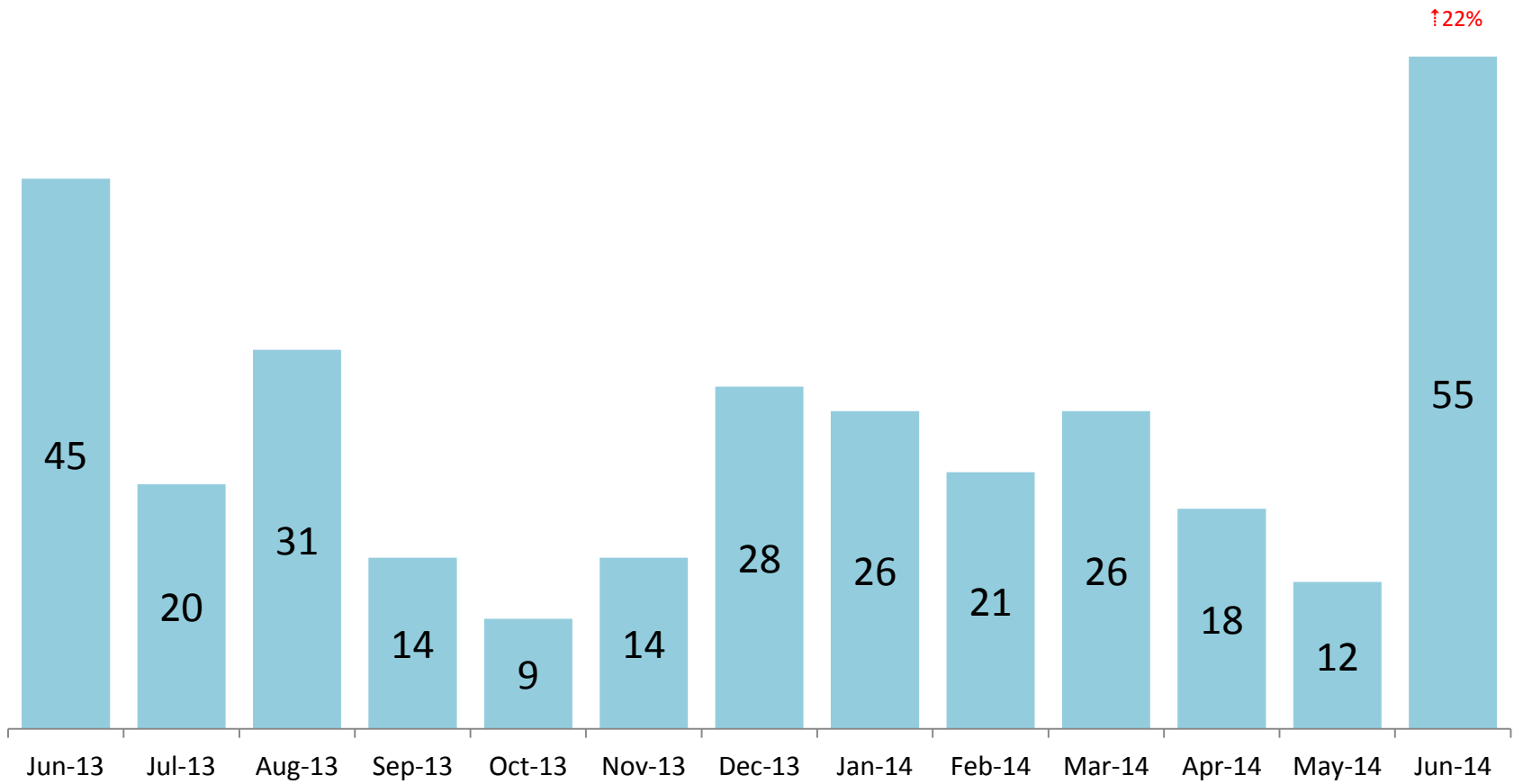
	6/26/13	7/23/13	8/28/13	9/24/13	10/30/13	11/25/13	12/23/13	1/31/14	2/25/14	3/31/14	4/30/14	5/30/14	6/30/14
Number in Placement	183	179	187	188	202	203	182	209	214	184	208	208	168

*Other includes NYC youth in voluntary placements with Lincoln Hall, MercyFirst and Graham Windham.

Note: Percentage change is June 2013 vs. June 2014.

Releases from NSP to Aftercare

June 2013 – June 2014



Note: Percentage change is June 2013 vs. June 2014.

Appendix

Figure 1: SCR Intakes by Borough, APR 13 – JUN 13 and APR 14 – JUN 14

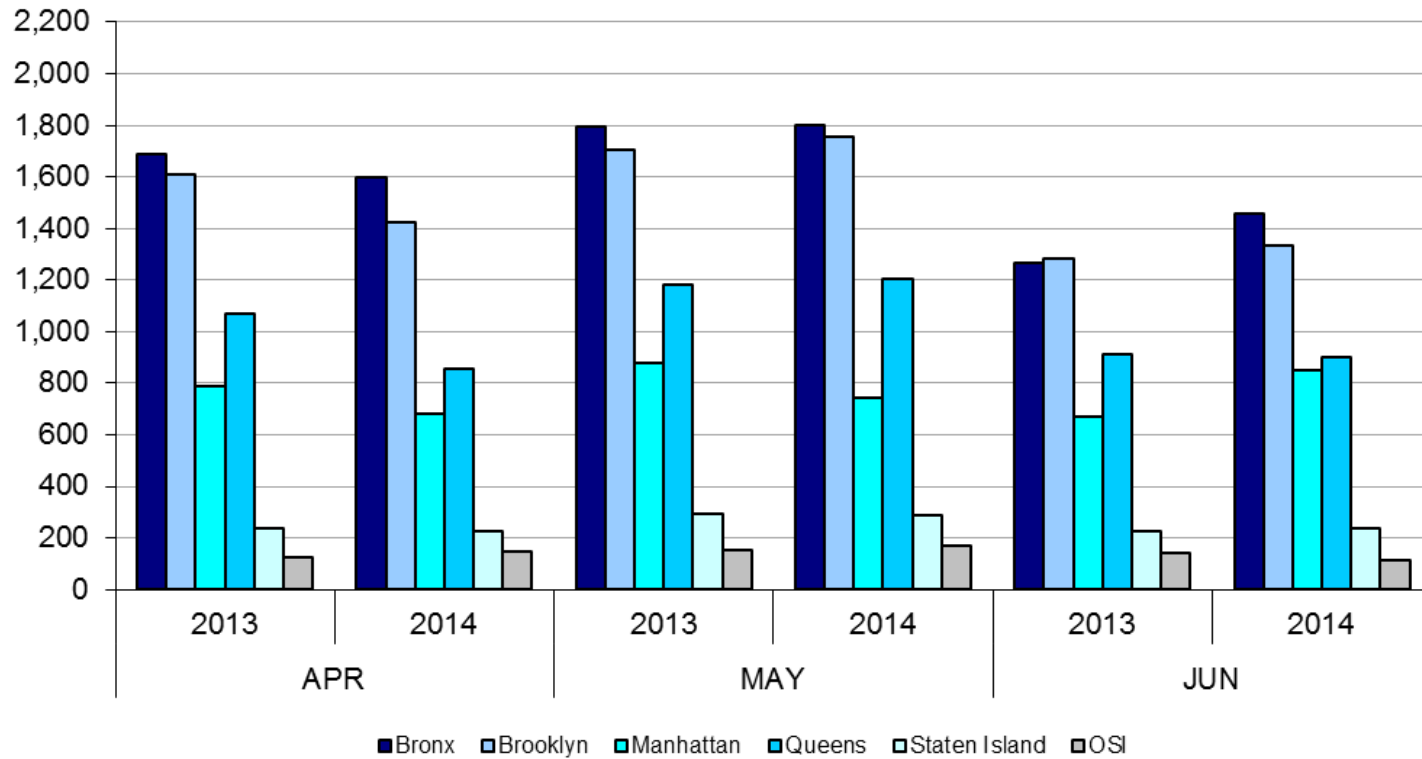


TABLE 1 - SCR Intake Changes by Borough, APR 13 – JUN 13 and APR 14 – JUN 14

Month	Year	Bronx	Brooklyn	Manhattan	Queens	Staten Island	OSI	Other	Total
APR	2013	1,689	1,609	788	1,070	236	123	160	5,675
	2014	1,598	1,424	684	856	225	148	142	5,077
	% Change	-5.4%	-11.5%	-13.2%	-20.0%	-4.7%	20.3%	-11.3%	-10.5%
MAY	2013	1,795	1,704	881	1,182	296	153	136	6,147
	2014	1,800	1,757	746	1,205	287	172	156	6,123
	% Change	0.3%	3.1%	-15.3%	1.9%	-3.0%	12.4%	14.7%	-0.4%
JUN	2013	1,268	1,284	669	910	223	142	139	4,635
	2014	1,457	1,333	848	900	239	112	151	5,040
	% Change	14.9%	3.8%	26.8%	-1.1%	7.2%	-21.1%	8.6%	8.7%
Total	2013	4,752	4,597	2,338	3,162	755	418	435	16,457
	2014	4,855	4,514	2,278	2,961	751	432	449	16,240
	% Change	2.2%	-1.8%	-2.6%	-6.4%	-0.5%	3.3%	3.2%	-1.3%

Figure 2: Citywide SCR Intakes by Reporter Group, APR 13 – JUN 13 and APR 14 – JUN 14

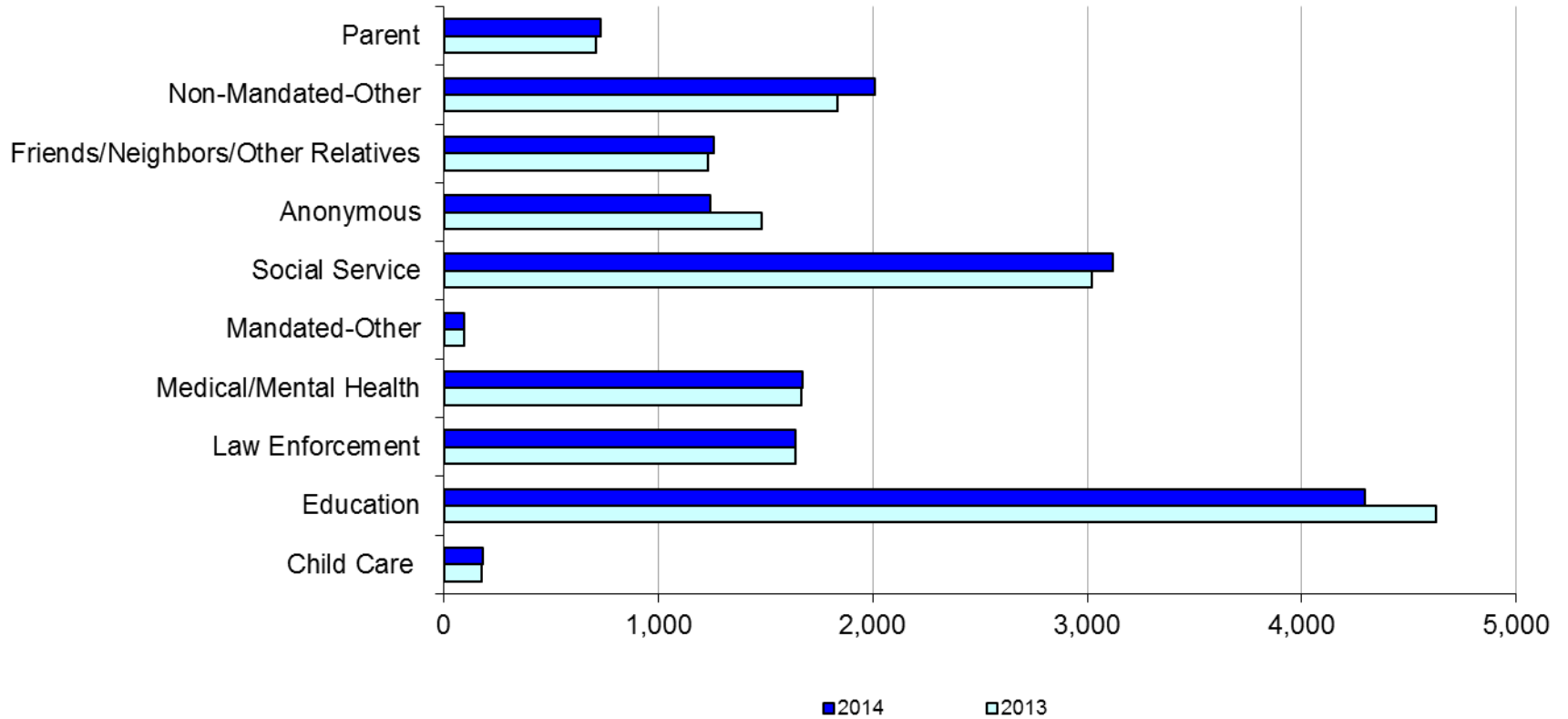
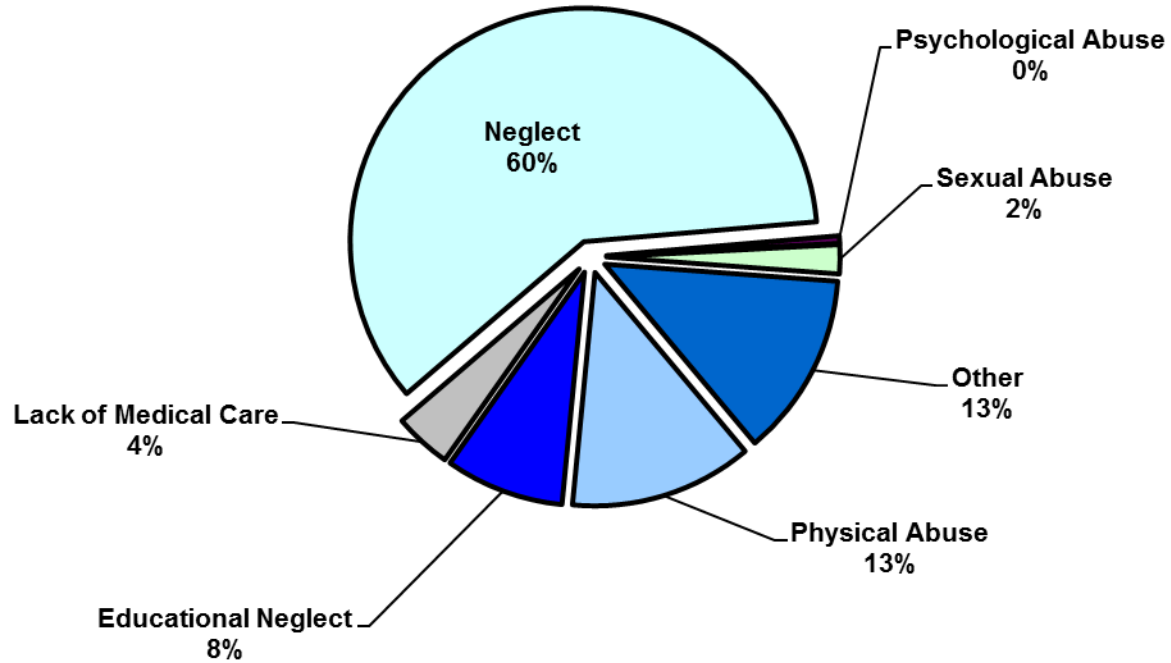


TABLE 2 - SCR Intakes by Reporter Group, APR 13 – JUN 13 and APR 14 – JUN 14

Year	Child Care/ Substitute Care Personnel	Educational Personnel	Law Enforcement	Medical/ Mental Health Personnel	Mandated- Other	Social Service Personnel	Anonymous	Friends/ Neighbors/ Other Relatives	Non- Mandated- Other	Parent	Foster Parent	Total
Bronx												
2013	53	1,402	382	465	23	913	411	370	551	177	0	4,747
2014	52	1,394	397	496	21	982	353	345	607	209	0	4,856
% Change	-1.9%	-0.6%	3.9%	6.7%	-8.7%	7.6%	-14.1%	-6.8%	10.2%	18.1%	--	2.3%
Brooklyn												
2013	51	1,352	449	459	35	748	435	371	503	190	0	4,593
2014	37	1,239	462	436	19	798	393	368	573	192	0	4,517
% Change	-27.5%	-8.4%	2.9%	-5.0%	-45.7%	6.7%	-9.7%	-0.8%	13.9%	1.1%	--	-1.7%
Manhattan												
2013	25	545	297	253	15	439	218	178	282	84	0	2,336
2014	26	487	297	249	17	451	172	192	310	76	1	2,278
% Change	4.0%	-10.6%	0.0%	-1.6%	13.3%	2.7%	-21.1%	7.9%	9.9%	-9.5%	--	-2.5%
Queens												
2013	23	994	345	309	9	578	286	201	293	123	0	3,161
2014	20	890	297	325	22	593	179	229	277	130	0	2,962
% Change	-13.0%	-10.5%	-13.9%	5.2%	144.4%	2.6%	-37.4%	13.9%	-5.5%	5.7%	--	-6.3%
Staten Island												
2013	2	250	57	74	4	110	91	64	64	39	0	755
2014	12	201	63	62	4	103	90	78	96	40	2	751
% Change	500.0%	-19.6%	10.5%	-16.2%	0.0%	-6.4%	-1.1%	21.9%	50.0%	2.6%	--	-0.5%
OSI												
2013	16	40	18	43	6	90	23	17	105	59	1	418
2014	27	41	22	55	7	64	34	27	103	52	0	432
% Change	68.8%	2.5%	22.2%	27.9%	16.7%	-28.9%	47.8%	58.8%	-1.9%	-11.9%	--	3.3%
Other												
2013	6	41	92	62	1	142	16	30	37	37	1	465
2014	5	44	101	52	2	130	21	18	42	33	0	448
% Change	-16.7%	7.3%	9.8%	-16.1%	100.0%	-8.5%	31.3%	-40.0%	13.5%	-10.8%	--	-3.7%
Citywide												
2013	176	4,624	1,640	1,665	93	3,020	1,480	1,231	1,835	709	2	16,475
2014	179	4,296	1,639	1,675	92	3,121	1,242	1,257	2,008	732	3	16,244
% Change	1.7%	-7.1%	-0.1%	0.6%	-1.1%	3.3%	-16.1%	2.1%	9.4%	3.2%	50.0%	-1.4%

Figure 3: SCR Allegations, APR 14 – JUN 14



Total Allegations = 40,764

TABLE 3 - SCR Allegations, MAR 13 - MAY 13 and MAR 14 - MAY 14

Year	Physical Abuse	Educational Neglect	Lack of Medical Care	Neglect	Psychological Abuse	Sexual Abuse	Other	Total
Bronx								
2013	1,460	1,587	564	7,342	74	245	1,633	12,905
2014	1,534	1,583	605	7,785	64	216	1,623	13,410
% Change	5.1%	-0.3%	7.3%	6.0%	-13.5%	-11.8%	-0.6%	3.9%
Brooklyn								
2013	1,631	1,349	447	7,325	68	244	1,762	12,826
2014	1,635	1,376	496	7,399	59	239	1,495	12,699
% Change	0.2%	2.0%	11.0%	1.0%	-13.2%	-2.0%	-15.2%	-1.0%
Manhattan								
2013	674	545	225	3049	36	91	692	5,312
2014	539	478	208	2876	21	81	558	4,761
% Change	-20.0%	-12.3%	-7.6%	-5.7%	-41.7%	-11.0%	-19.4%	-10.4%
Queens								
2013	1,225	612	277	4,423	63	180	942	7,722
2014	1,232	589	282	4,424	61	174	919	7,681
% Change	0.6%	-3.8%	1.8%	0.0%	-3.2%	-3.3%	-2.4%	-0.5%
Staten Island								
2013	279	215	64	1,246	29	34	319	2,186
2014	232	149	60	1,193	5	31	306	1,976
% Change	-16.8%	-30.7%	-6.3%	-4.3%	-82.8%	-8.8%	-4.1%	-9.6%
OSI								
2013	263	43	56	1,203	15	53	209	1,842
2014	278	67	78	1,210	10	75	172	1,890
% Change	5.7%	55.8%	39.3%	0.6%	-33.3%	41.5%	-17.7%	2.6%
Other								
2013	129	57	46	639	4	34	200	1,109
2014	106	59	40	559	11	38	185	998
% Change	-17.8%	3.5%	-13.0%	-12.5%	175.0%	11.8%	-7.5%	-10.0%
Citywide								
2013	5,661	4,408	1,679	25,227	289	881	5,757	43,902
2014	5,556	4,301	1,769	25,446	231	854	5,258	43,415
% Change	-1.9%	-2.4%	5.4%	0.9%	-20.1%	-3.1%	-8.7%	-1.1%

TABLE 4 - Purchased Preventive Cases
 Opened and Closed
 January 2012 to June 2014

Month	Opened Cases	Closed Cases
2012		
Jan-12	870	629
Feb-12	889	835
Mar-12	944	991
Apr-12	997	870
May-12	1,117	979
Jun-12	965	869
Jul-12	853	979
Aug-12	917	1,007
Sep-12	727	900
Oct-12	875	915
Nov-12	738	702
Dec-12	938	871
2013		
Jan-13	960	884
Feb-13	873	916
Mar-13	962	1,171
Apr-13	940	988
May-13	864	1,337
Jun-13	863	780
Jul-13	868	1,004
Aug-13	802	1,084
Sep-13	844	724
Oct-13	933	765
Nov-13	901	685
Dec-13	1,106	552
2014		
Jan-14	983	640
Feb-14	987	679
Mar-14	1,146	874
Apr-14	1,074	896
May-14	1,042	888
Jun-14	976	762

**Table 5 - Referrals to Purchased Preventive Services by Source
January 2012 to June 2014**

Month	Total Referrals	Division of Child Protection	Foster Care Agencies	PPRS Transfer	School	Self	Other Sources*
2012							
Jan-12	1,431	66.5%	0.7%	8.5%	3.6%	3.8%	17.0%
Feb-12	1,043	78.2%	1.1%	9.0%	1.9%	6.7%	3.1%
Mar-12	1,525	73.6%	0.9%	6.0%	1.8%	3.9%	13.8%
Apr-12	1,370	72.8%	1.0%	9.4%	1.2%	4.2%	11.4%
May-12	1,463	70.9%	1.0%	7.6%	1.1%	4.4%	15.0%
Jun-12	1,279	73.8%	0.5%	5.9%	1.0%	4.7%	14.2%
Jul-12	1,308	77.4%	1.2%	7.0%	0.3%	3.7%	10.5%
Aug-12	1,391	74.0%	0.9%	11.7%	0.3%	2.9%	10.2%
Sep-12	1,110	70.5%	1.9%	9.6%	1.2%	5.0%	11.9%
Oct-12	1,159	61.1%	1.4%	12.6%	2.7%	4.9%	17.3%
Nov-12	1,106	67.0%	1.0%	9.9%	2.2%	4.7%	15.3%
Dec-12	1,206	68.7%	0.8%	5.8%	2.7%	5.6%	16.4%
CY 2012	15,391	71.3%	1.0%	8.5%	1.6%	4.5%	13.1%
2013							
Jan-13	1,474	74.1%	1.2%	7.3%	1.2%	3.7%	12.5%
Feb-13	1,308	75.8%	1.1%	8.0%	1.6%	2.9%	10.6%
Mar-13	1,270	73.5%	1.2%	6.7%	2.4%	3.9%	12.3%
Apr-13	1,421	77.9%	0.8%	7.4%	0.9%	3.0%	10.1%
May-13	1,320	68.4%	0.5%	10.2%	1.5%	3.8%	15.5%
Jun-13	953	69.2%	1.2%	9.4%	2.6%	5.0%	12.6%
Jul-13	1,014	66.3%	1.9%	14.4%	1.6%	3.9%	11.9%
Aug-13	1,212	70.5%	0.7%	11.8%	0.7%	4.7%	11.6%
Sep-13	1,262	64.0%	2.1%	11.3%	1.7%	6.7%	14.2%
Oct-13	1,319	61.0%	1.1%	9.0%	2.9%	7.5%	18.5%
Nov-13	1,249	55.9%	1.6%	10.5%	4.6%	9.2%	18.3%
Dec-13	1,464	62.2%	1.2%	8.2%	2.3%	9.2%	17.0%
CY 2013	15,266	68.3%	1.2%	9.4%	2.0%	5.3%	13.8%
2014							
Jan-14	1,537	70.0%	1.2%	6.6%	2.3%	5.8%	14.2%
Feb-14	1,334	69.7%	0.8%	8.4%	1.7%	5.5%	13.9%
Mar-14	1,612	70.0%	1.4%	8.6%	1.6%	5.3%	13.1%
Apr-14	1,525	70.2%	0.9%	7.6%	2.1%	3.7%	15.4%
May-14	1,580	74.4%	0.7%	8.3%	1.4%	5.2%	10.0%
Jun-14	1,550	78.6%	1.2%	6.3%	1.2%	3.2%	9.4%

*Other Community Sources includes the Department of Homeless Services, Family Court, FAP, Hospitals and Medical facilities, the NYC Housing Authority, PINS/DAS, Probation, and Sponsor Agencies.