

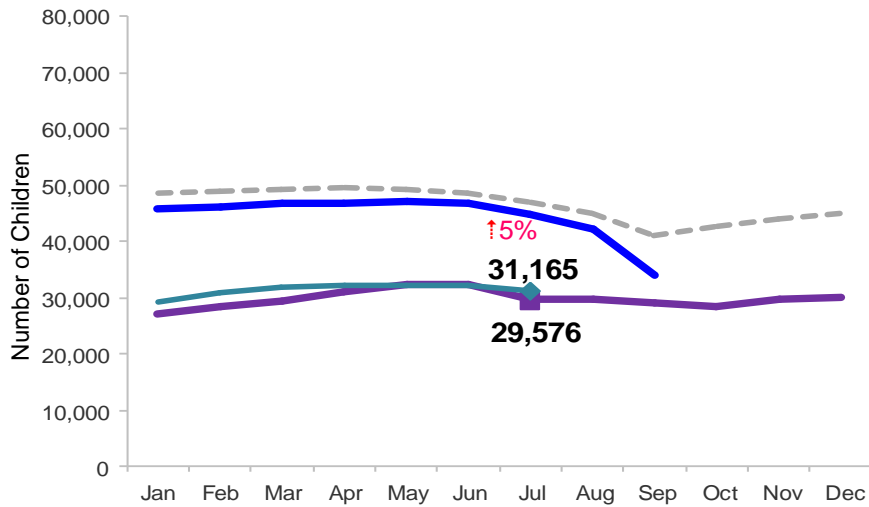


# Flash

August 2014

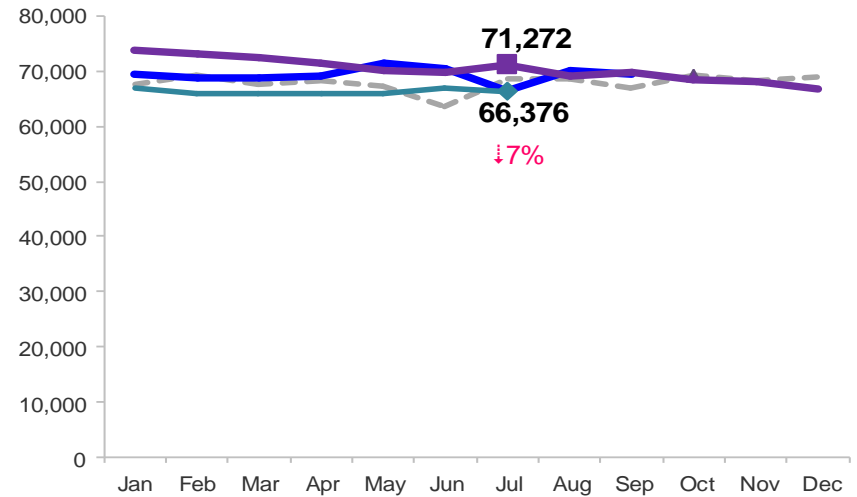
## Children Enrolled in Contracted Early Learn Programs

January 2011 – July 2014 (End of Month)



## Children Using Vouchers for Child Care

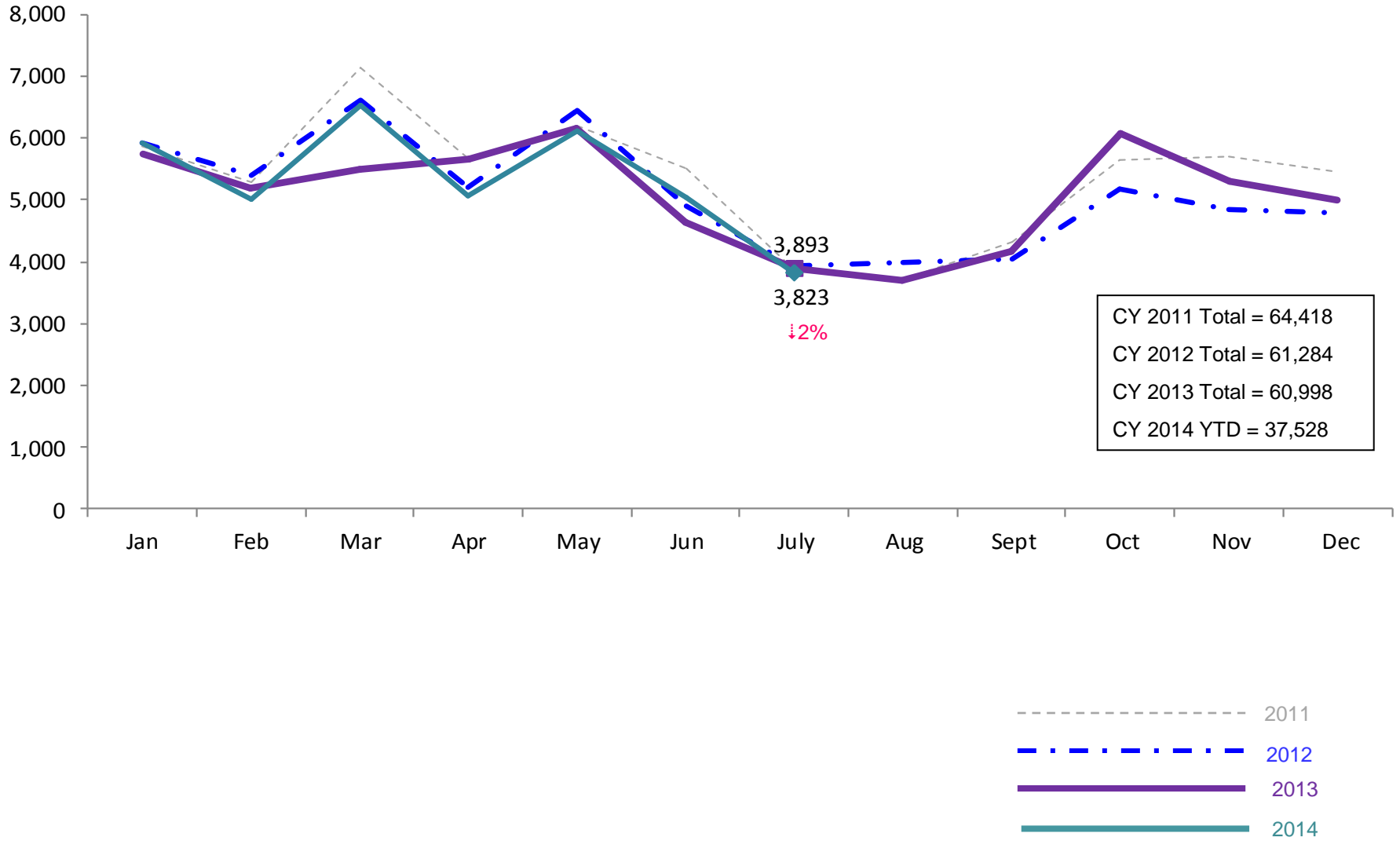
January 2011 – July 2014 (End of Month)



Notes: 1) Beginning October 1, 2012 ACS converted its early care and education system to a new model, Early Learn NYC. Enrollment data for the transitional months of October – December 2012 are not available because contractors were in the midst of implementing the data collection systems. 2) Percentage change is July 2013 vs. July 2014.

### SCR Intakes

January 2011 – July 2014 (Monthly Total)

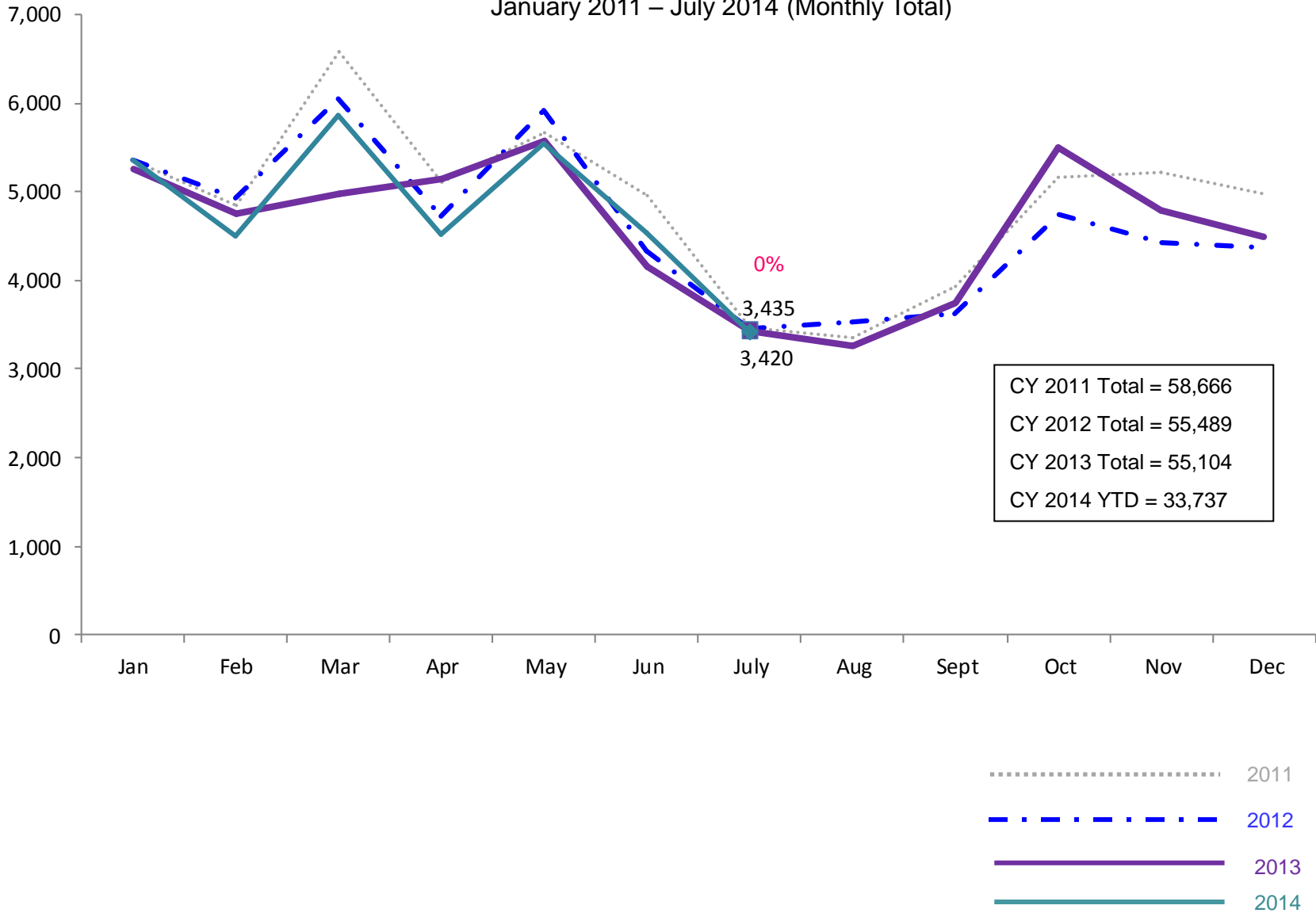


Note: Percentage change is July 2013 vs. July 2014.

See Pages 29 through 34 of the Appendix for supporting data.

### SCR Consolidated Investigations

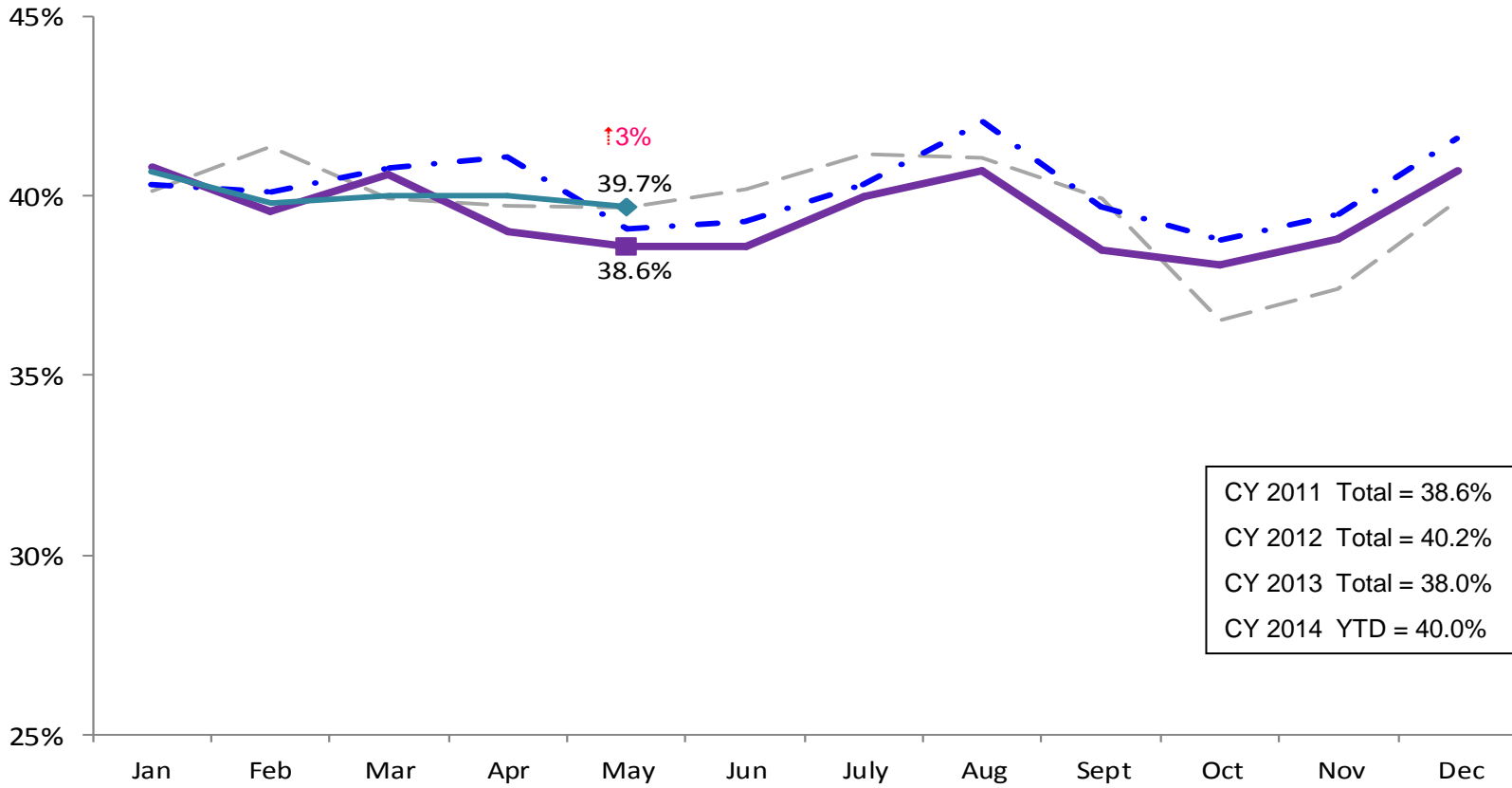
January 2011 – July 2014 (Monthly Total)



Note: Percentage change is July 2013 vs. July 2014.

### SCR Investigation Indication Rate

January 2011 – May 2014



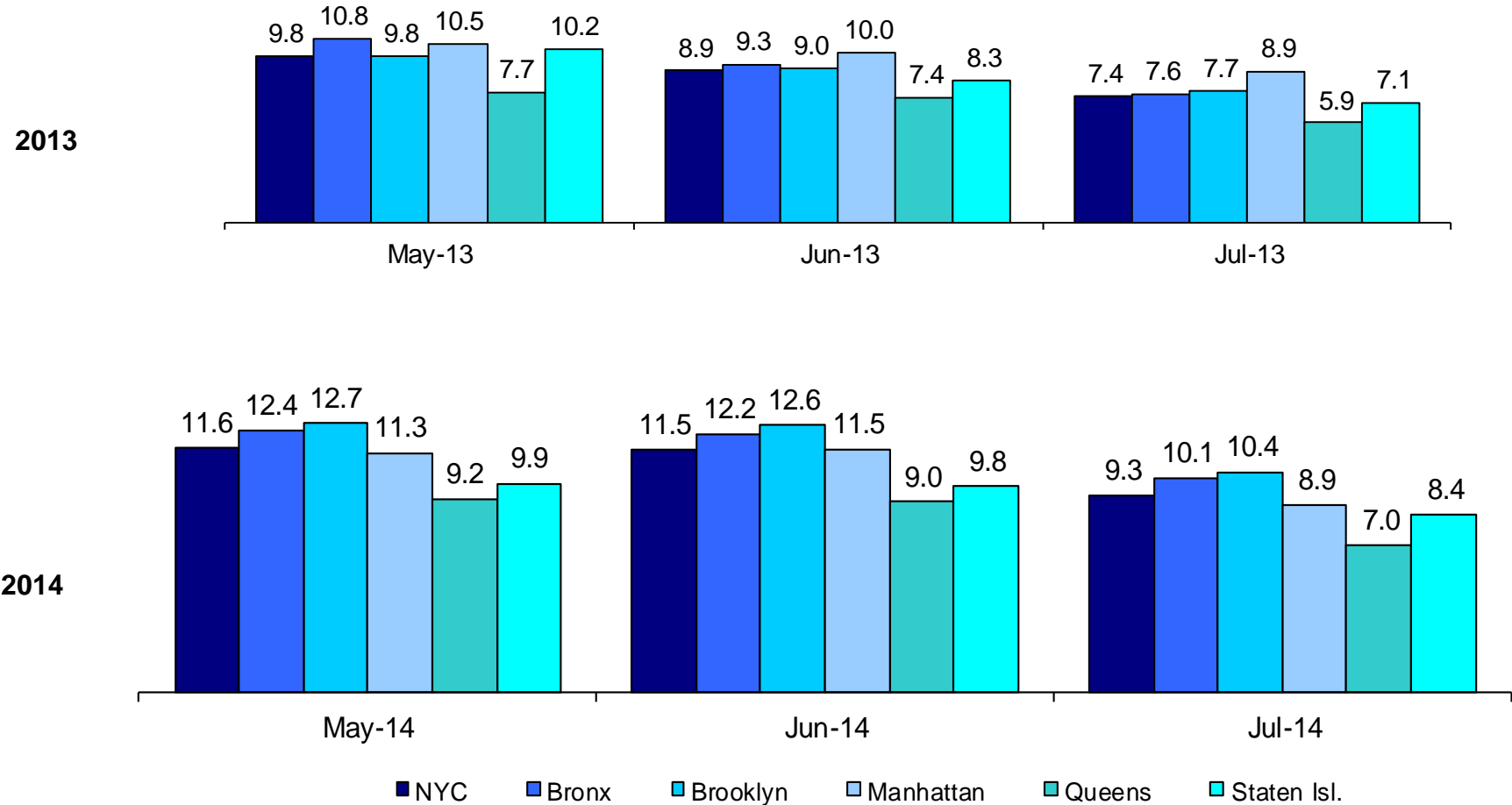
CY 2011 Total = 38.6%  
 CY 2012 Total = 40.2%  
 CY 2013 Total = 38.0%  
 CY 2014 YTD = 40.0%



Note: Percentage change is May 2013 vs. May 2014.

**Average P/D Combined Caseload\***

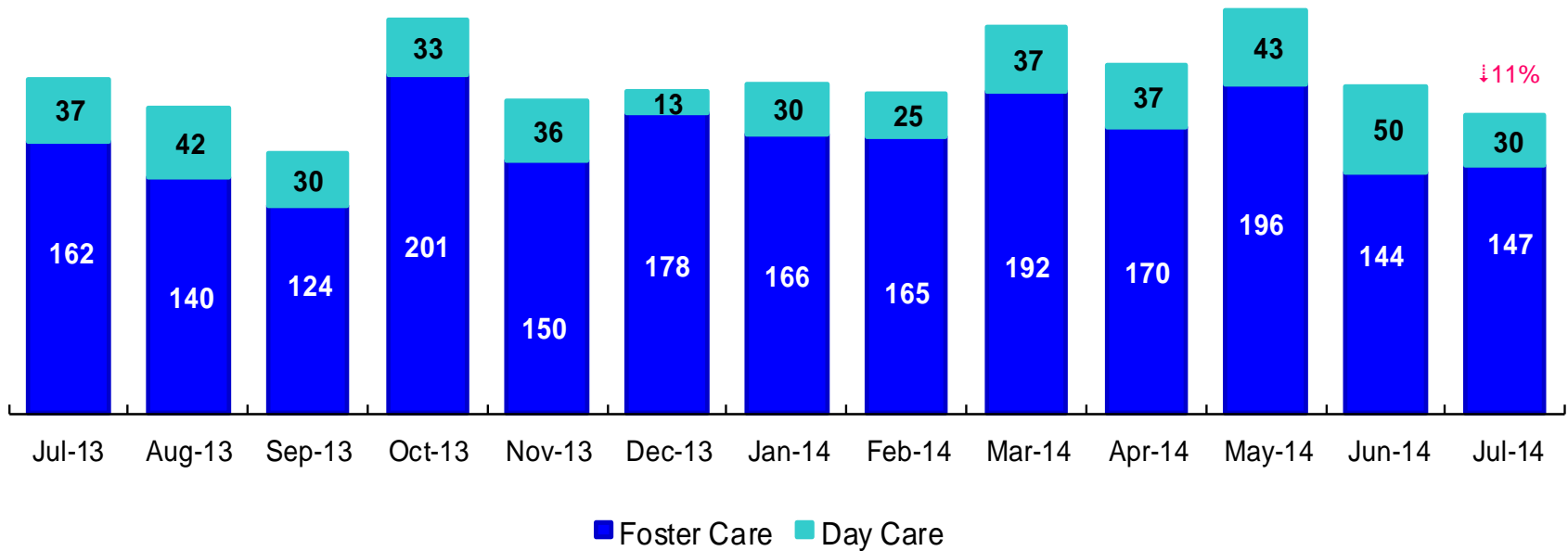
May 2013 – July 2013 & May 2014 – July 2014



\* Caseloads are of protective/diagnostic caseworkers only and exclude the caseloads carried by Level I and Level II Supervisors. 6

### OSI Investigations by Program

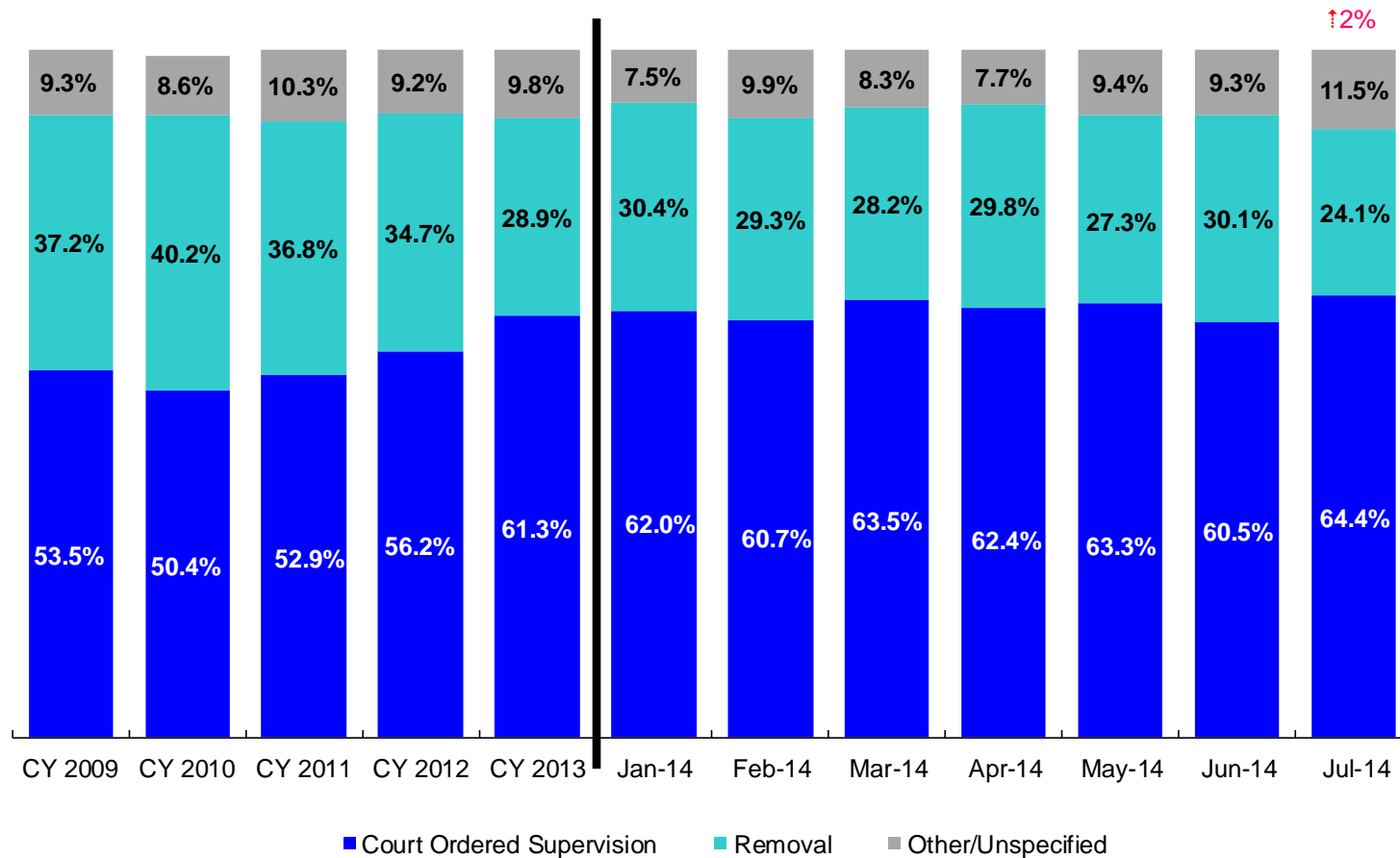
July 2013 – July 2014



	Jul 2013	Aug 2013	Sep 2013	Oct 2013	Nov 2013	Dec 2013	Jan 2014	Feb 2014	Mar 2014	Apr 2014	May 2014	Jun 2014	July 2014
Number of Investigations	199	182	154	234	186	191	196	190	229	207	239	194	177

Note: Percentage change is July 2013 vs. July 2014.

Article 10 Total Filings & Filing Outcomes, CY 2009 - CY 2013 and January – July 2014

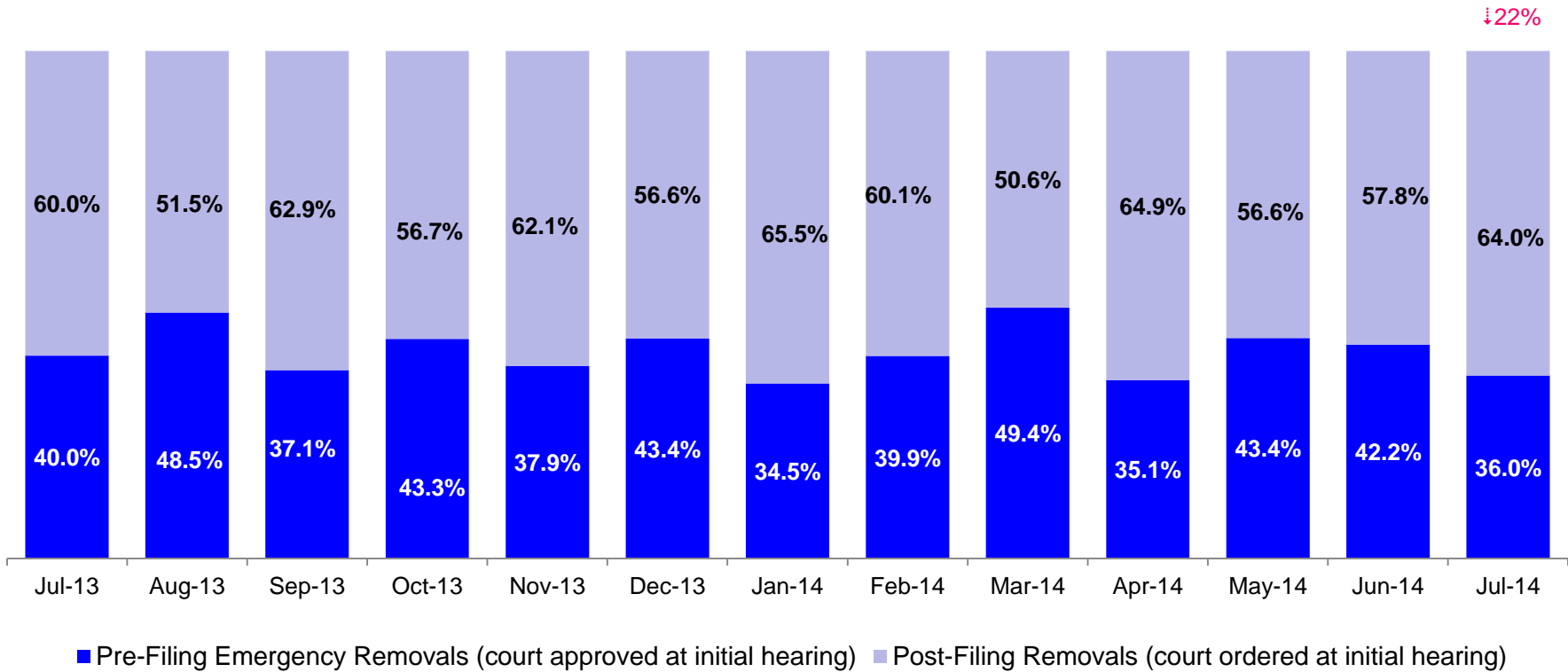


	CY 2009	CY 2010	CY 2011	CY 2012	CY 2013	Jan 2014	Feb 2014	Mar 2014	Apr 2014	May 2014	June 2014	July 2014
Art.10 Filings	11,568	10,093	9,596	8,913	9,318	743	828	905	801	978	826	713

Notes: 1) The category “Other/Unspecified” includes released with no supervision, no order issued and no outcome specified. Outcomes of cases heard the next day are not captured in this report. 2) Percentage change is July 2013 vs. July 2014.



### Article 10 Filing Removals, July 2013 – July 2014



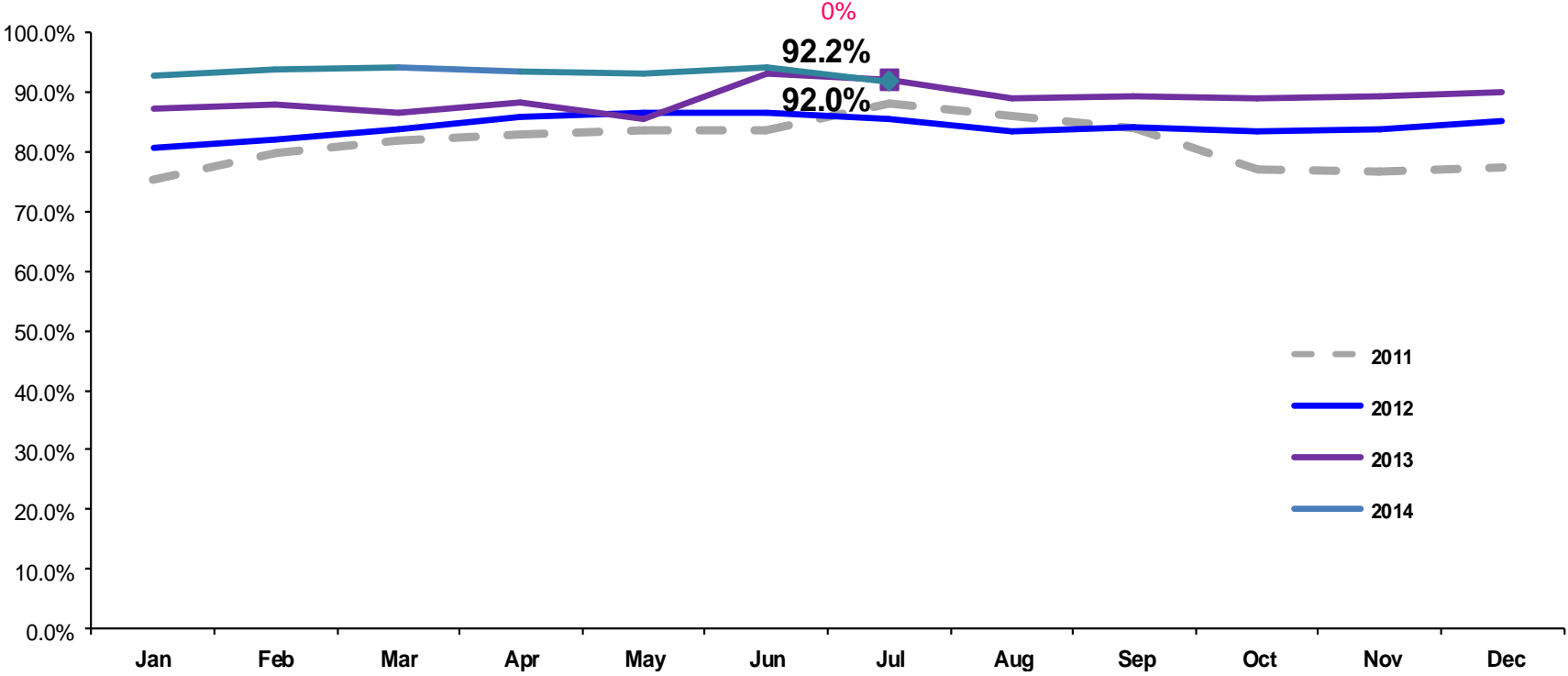
	Jul 2013	Aug 2013	Sep 2013	Oct 2013	Nov 2013	Dec 2013	Jan 2014	Feb 2014	Mar 2014	Apr 2014	May 2014	Jun 2014	Jul 2014
Number of Removals	220	200	229	261	224	212	226	243	255	239	267	249	172

Note: Percentage change is July 2013 vs. July 2014.

### PPRS Utilization Rate

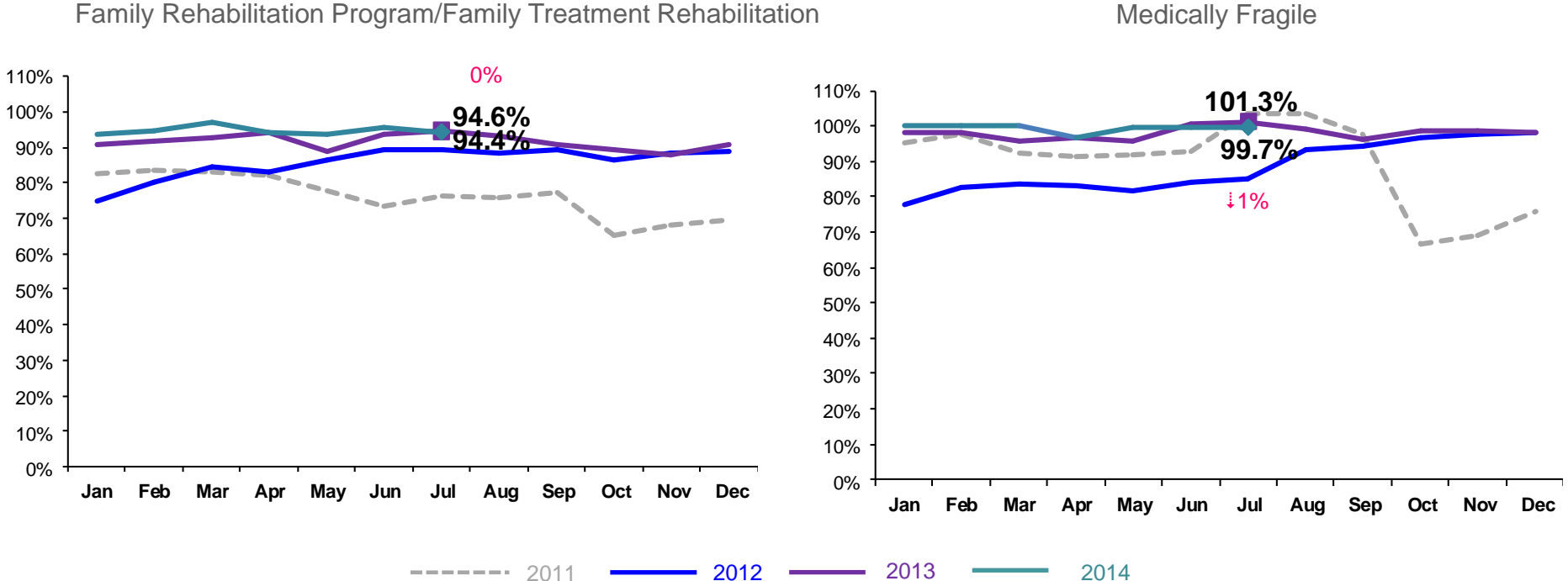
January 2011 – July 2014 (End of Month)

General Preventive



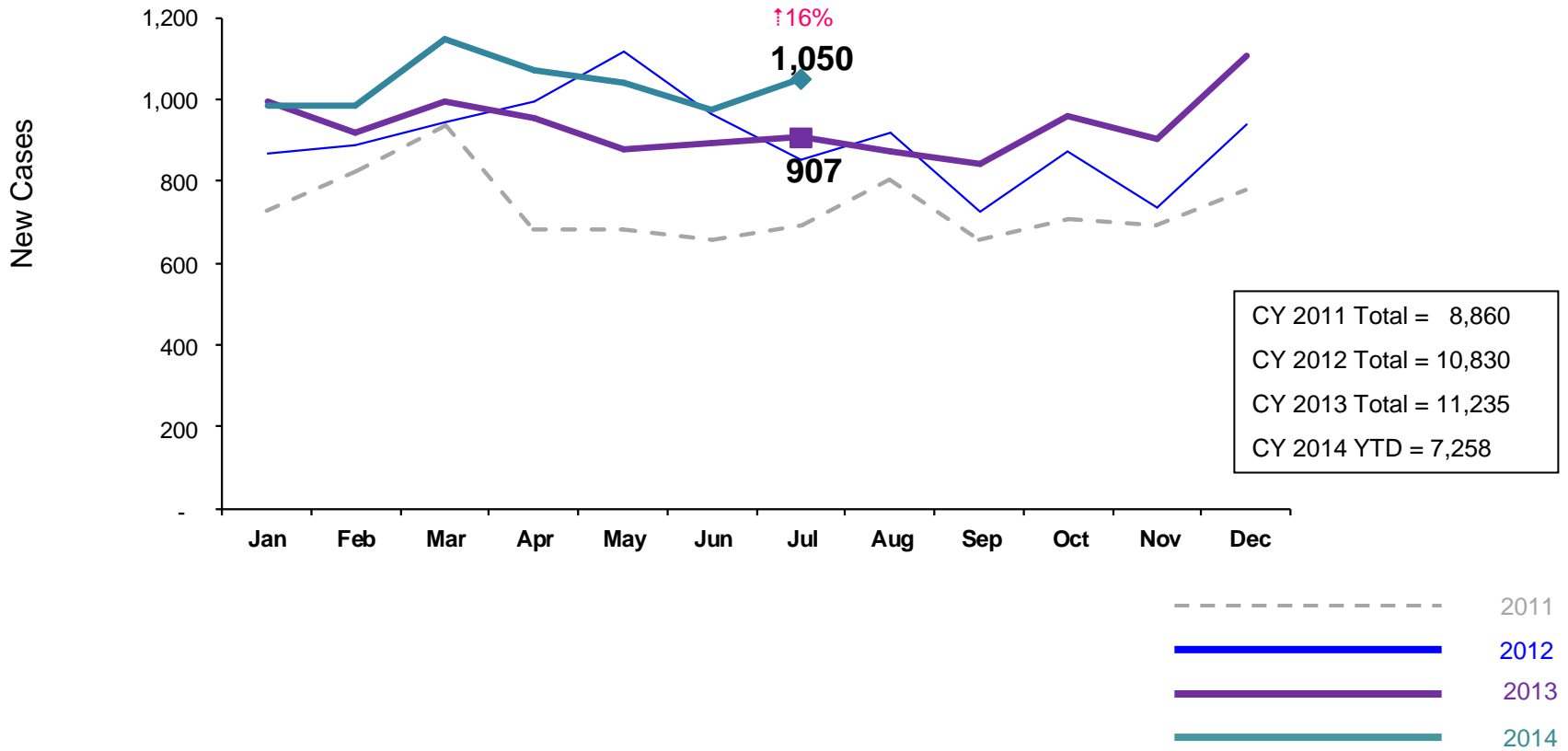
Notes: 1) Beacons programs are included in the GP utilization rates. 2) During February - June 2011 GP rates were adjusted by excluding programs in the process of being closed. GP rates were also adjusted during July – September 2011 by excluding newly opened programs. 3) During June-October 2013 GP programs in the process of converting to EBMs were excluded from the GP utilization statistics. 4) Percentage change is July 2013 vs. July 2014.

### PPRS Utilization Rate January 2011 – July 2014 (End of Month)



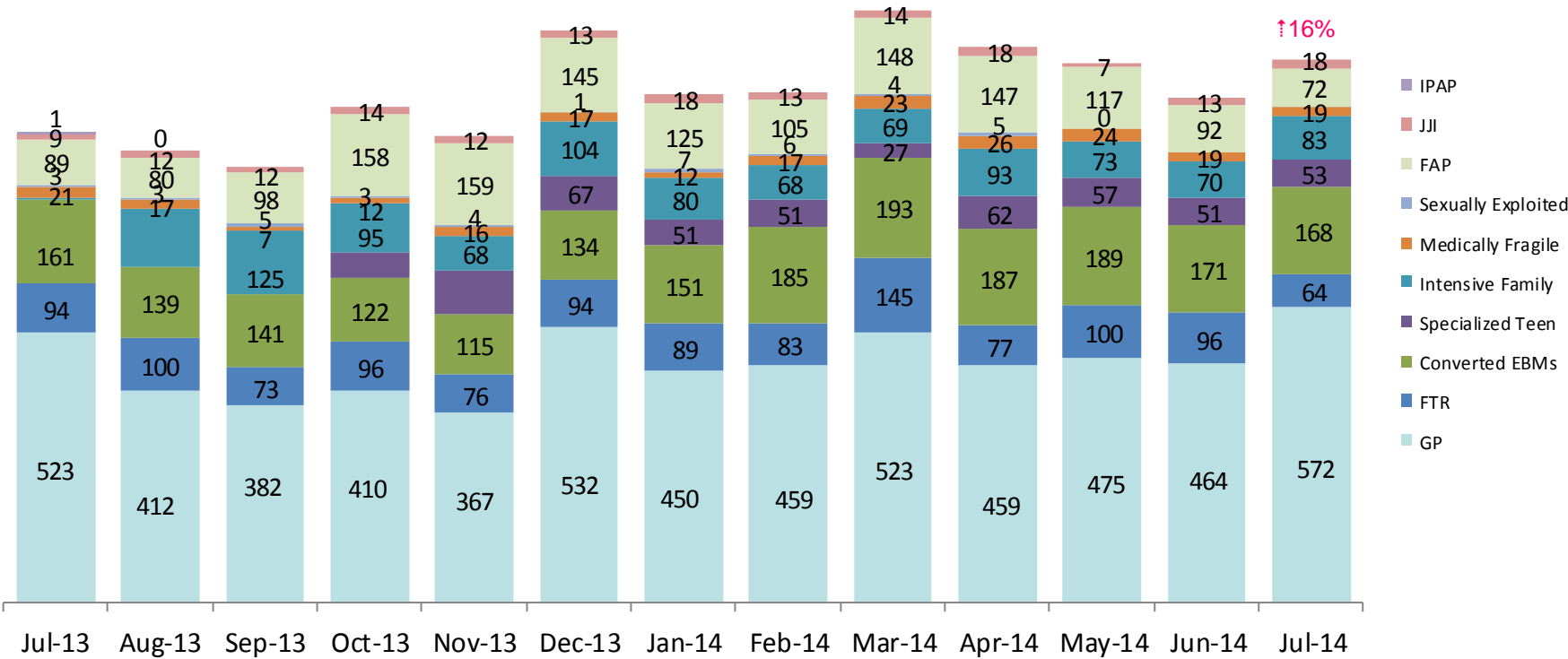
Notes: 1) During February - June 2011 FRP rates were adjusted by excluding programs in the process of being closed. FT/R rates were also adjusted during July – September 2011 by excluding newly opened programs. As of October 2011 all FT/R programs are included in the FT/R utilization rates. 2) Beginning July 2011 Family Treatment Rehabilitation programs replaced the Family Rehabilitation programs. 3) Beginning December 2011 the NYF Family Services for deaf Children and Adults program is no longer included in the medically fragile utilization rate. 4) During June -October 2013 FTR programs in the process of converting to EBMs were excluded from the FTR utilization statistics. 5) Percentage change is July 2013 vs. July 2014.

**New Preventive Cases\***  
January 2011 – July 2014



\*Notes: 1) New preventive cases do not include cases transferred from one preventive program to another. 2) Percentage change is July 2013 vs. July 2014. 3) See Pages 35 and 36 of the Appendix for supporting data.

### New Preventive Cases\* by Program Type July 2013 – July 2014

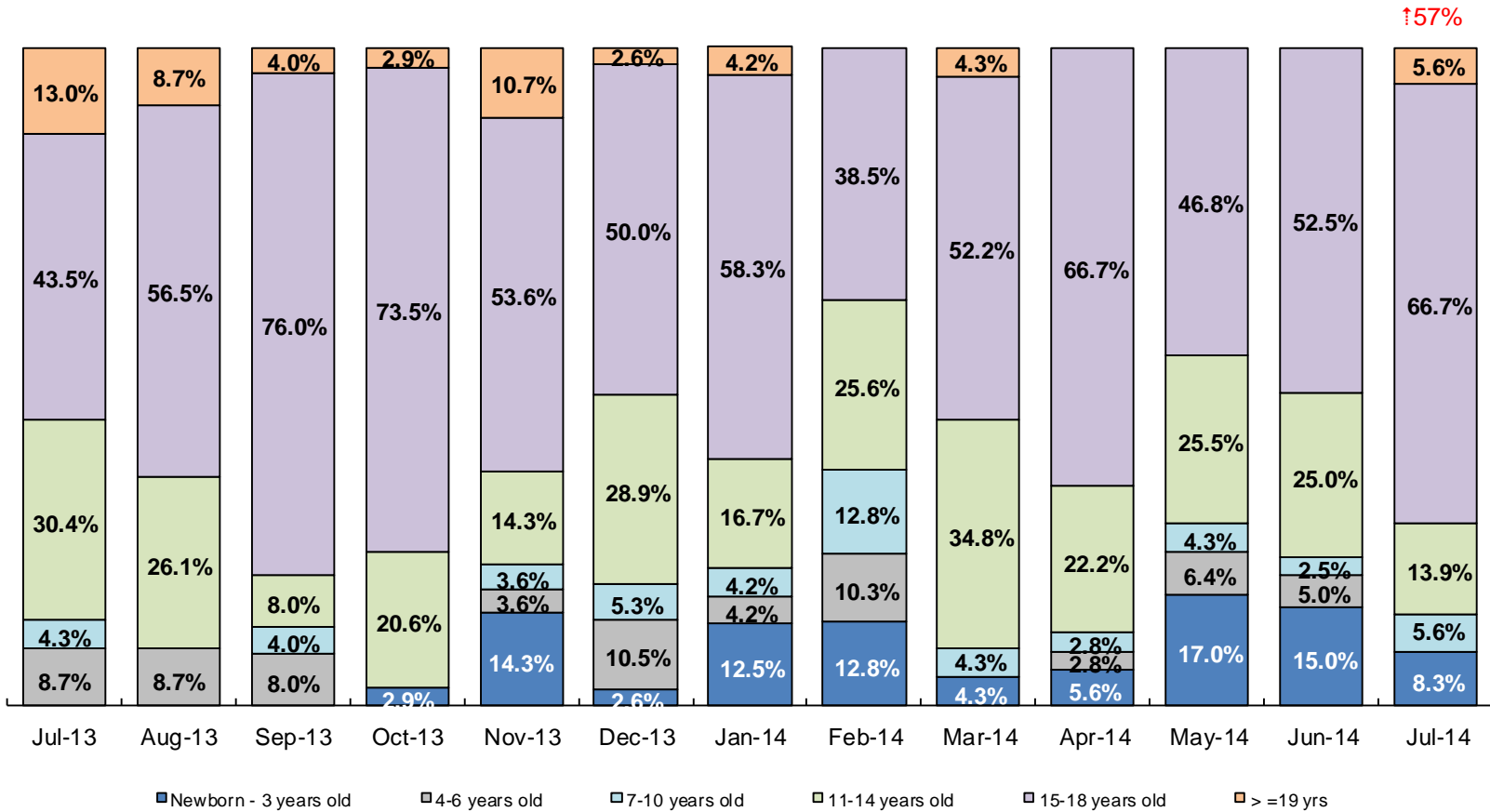


	Jul 2013	Aug 2013	Sep 2013	Oct 2013	Nov 2013	Dec 2013	Jan 2014	Feb 2014	Mar 2014	Apr 2014	May 2014	Jun 2014	Jul 2014
Number of New Preventive Cases	907	874	843	959	902	1,107	983	987	1,146	1,074	1,042	976	1,050

Notes: 1) New preventive cases do not include cases transferred from one preventive program to another. 2) Percentage change is July 2013 vs. July 2014.

### Children's Center Population by Age

July 2013 – July 2014

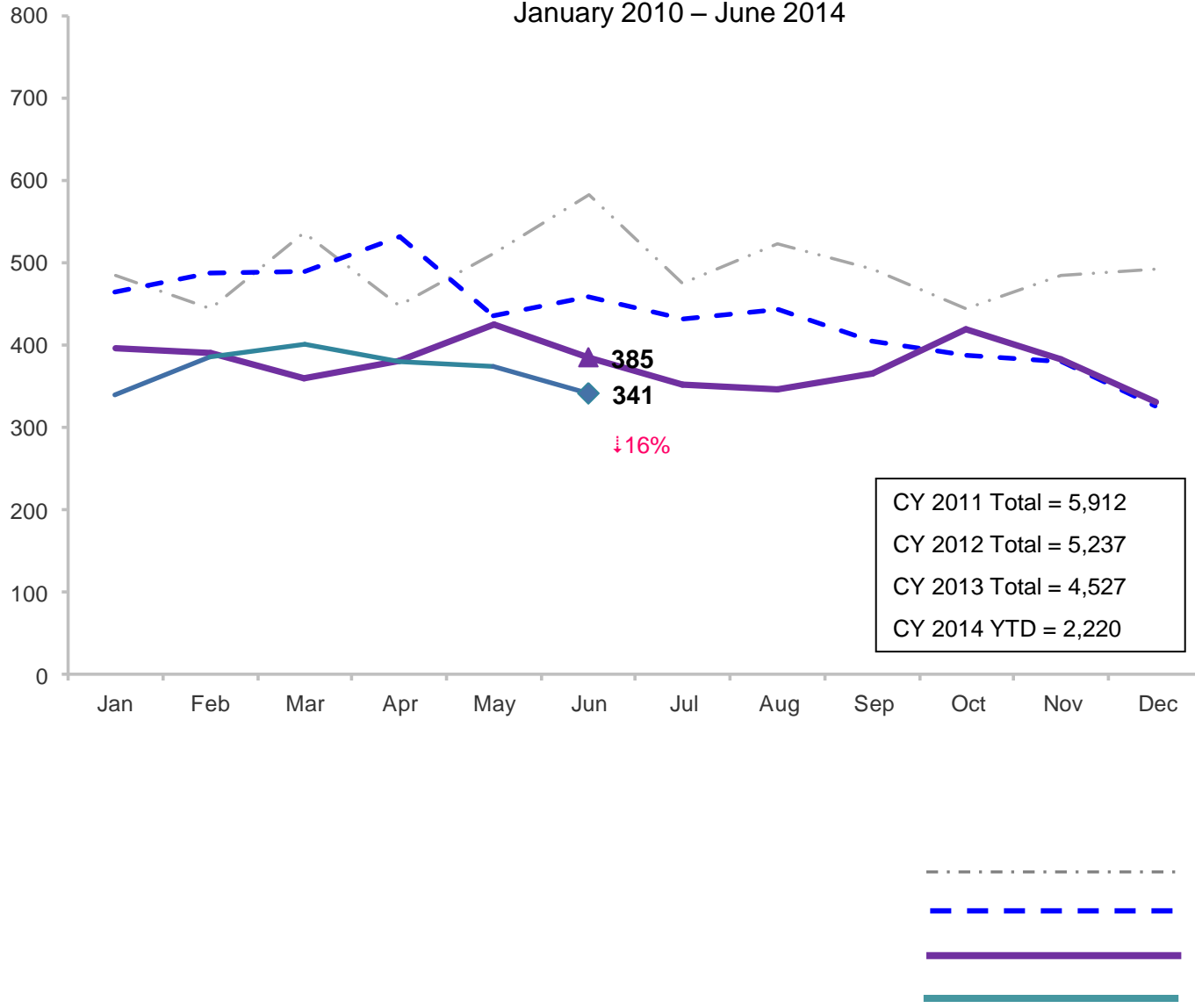


	Jul 2013	Aug 2013	Sep 2013	Oct 2013	Nov 2013	Dec 2013	Jan 2014	Feb 2014	Mar 2014	Apr 2014	May 2014	Jun 2014	July 2014
Number of Children	23	23	25	34	28	38	24	39	23	36	47	40	36

Note: Percentage change is July 2013 vs. July 2014.

### Total Monthly Placements

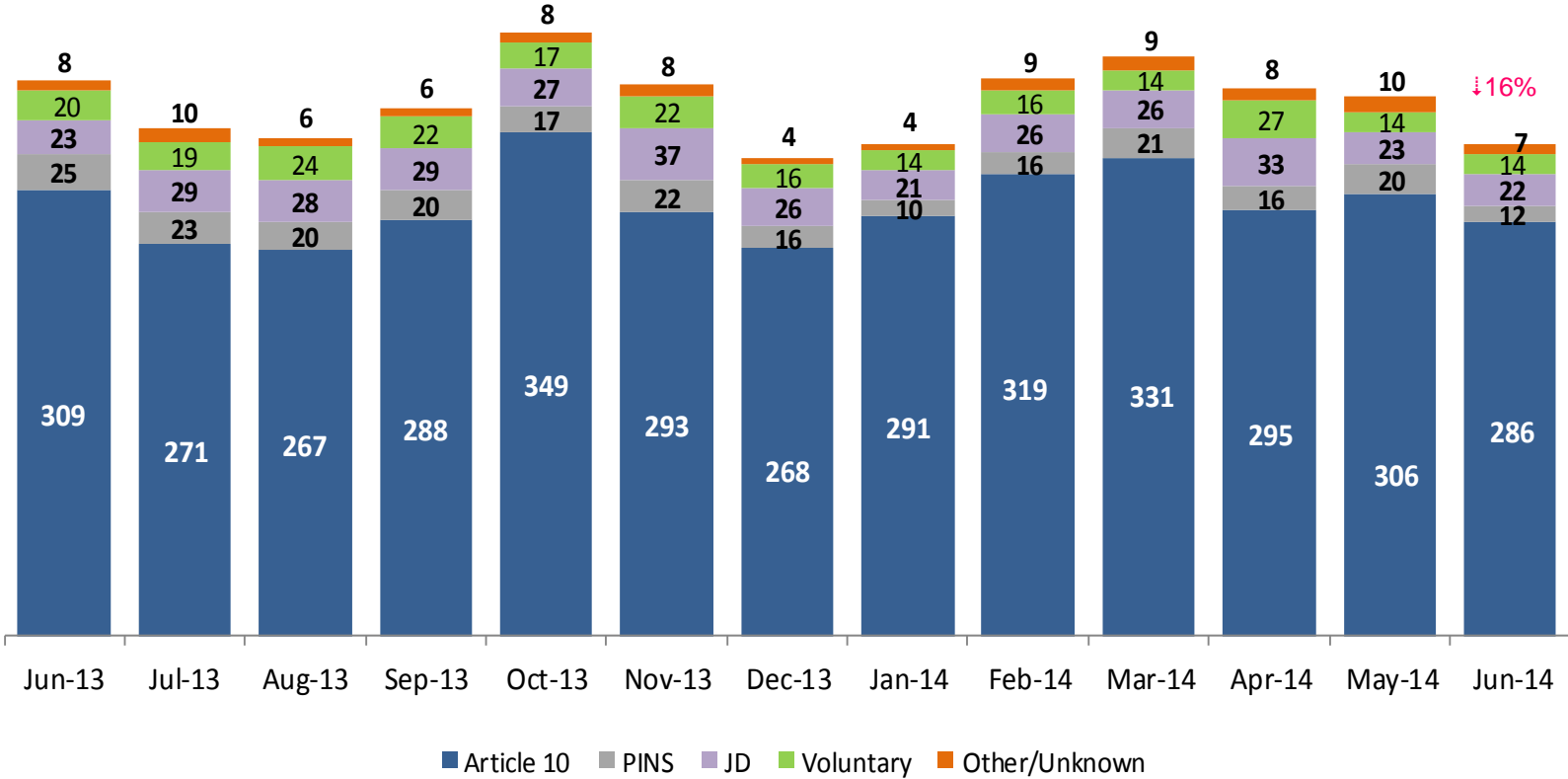
January 2010 – June 2014



Note: Percentage change is June 2013 vs. June 2014.

### Reason for Initial Placements into Foster Care

June 2013 – June 2014



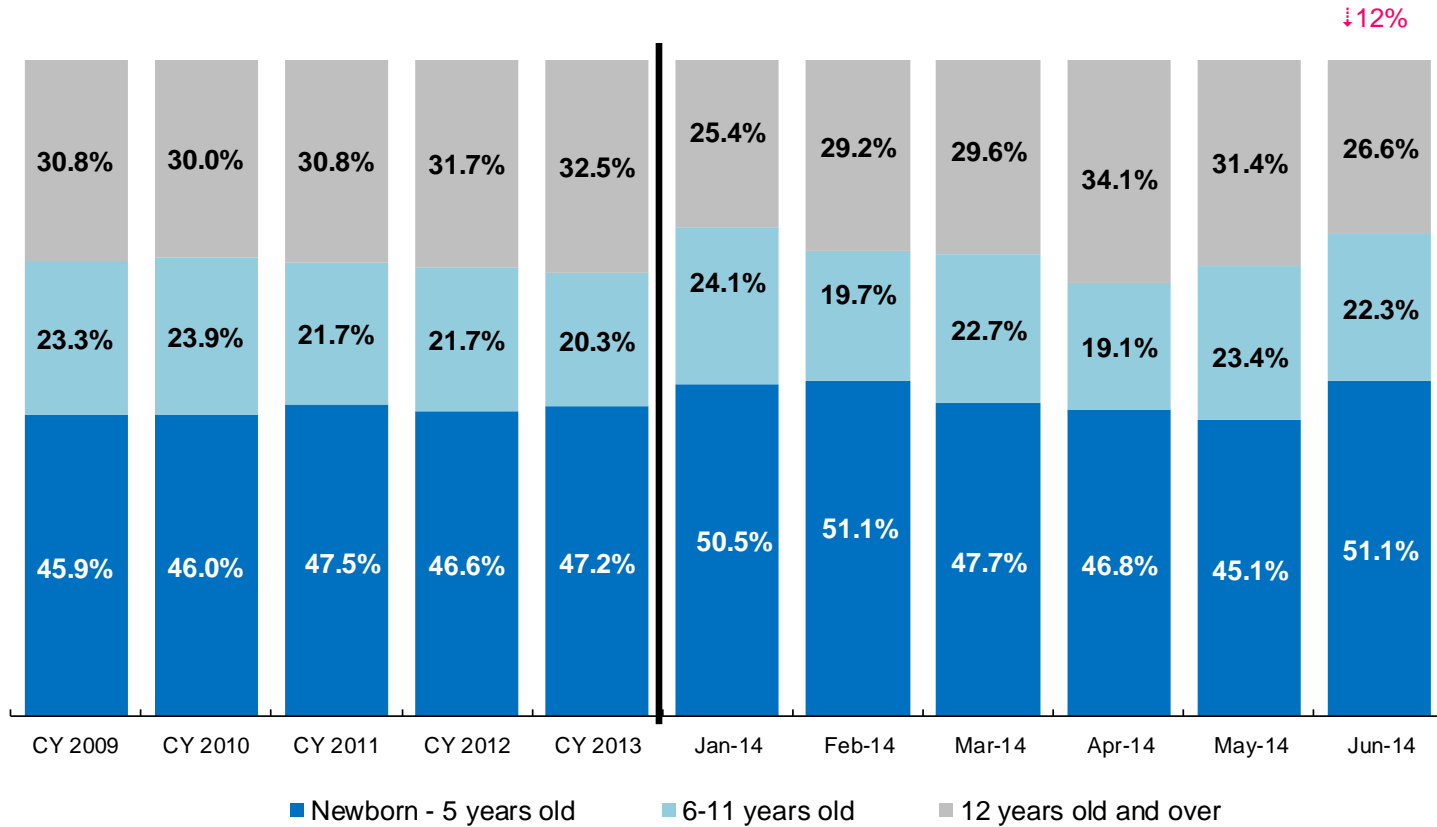
	Jun 2013	Jul 2013	Aug 2013	Sep 2013	Oct 2013	Nov 2013	Dec 2013	Jan 2014	Feb 2014	Mar 2014	April 2014	May 2014	Jun 2014
Number of Placements	385	352	345	365	418	382	330	340	386	401	379	373	341

Note: Percentage change is June 2013 vs. June 2014.



### Placements\* by Age

CY 2009 – CY 2013 and January – June 2014



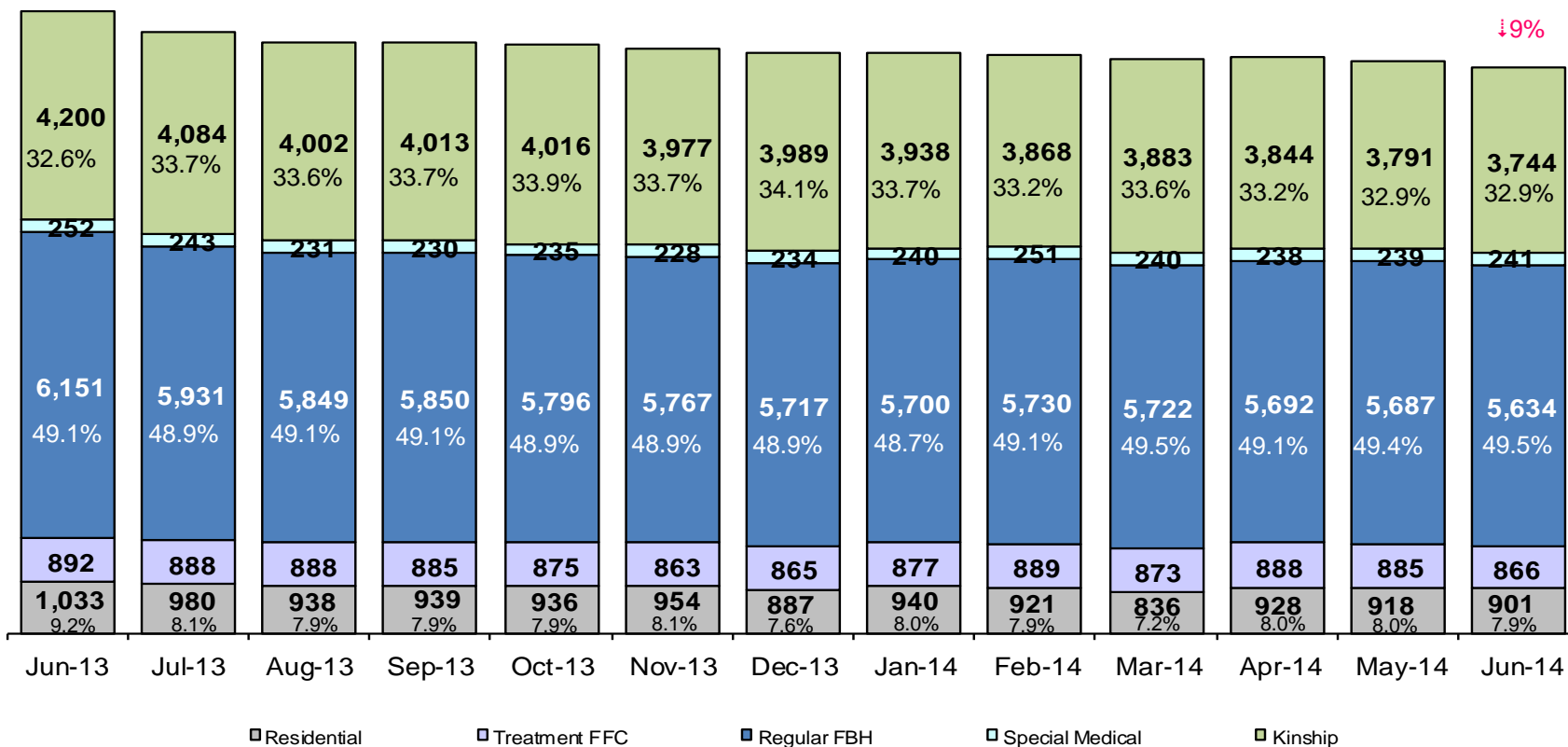
	CY 2008	CY 2009	CY 2010	CY 2011	CY 2012	CY 2013	Jan 2014	Feb 2014	Mar 2014	Apr 2014	May 2014	Jun 2014
Placements	4,764	5,657	5,842	4,941	4,823	4,170	319	360	375	346	350	319

↓12%

\*Excludes JD placements.

Note: Percentage change is June 2013 vs. June 2014.

### Children in Foster Care\* Jun 2013 – Jun 2014 (end of month)

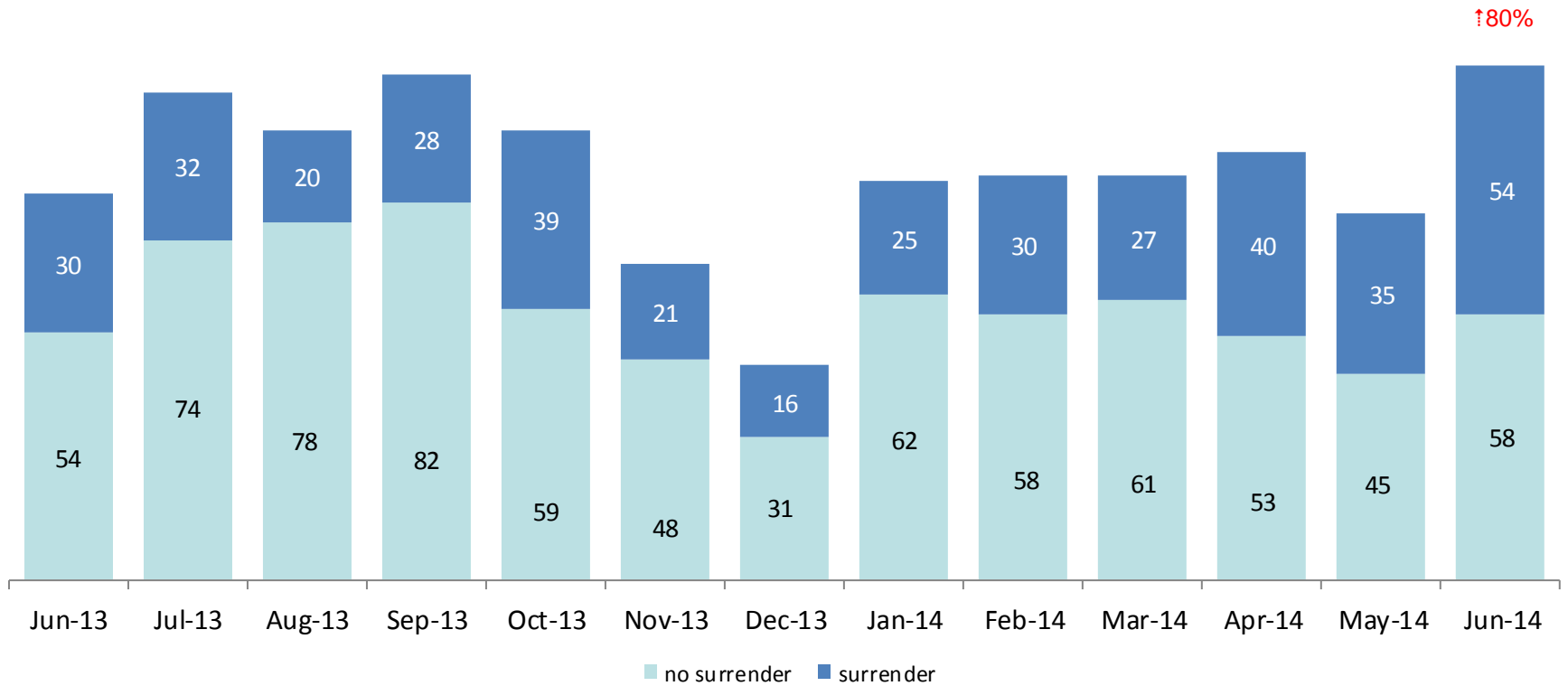


	Jun 2013	Jul 2013	Aug 2013	Sep 2013	Oct 2013	Nov 2013	Dec 2013	Jan 2014	Feb 2014	Mar 2014	Apr 2014	May 2014	Jun 2014
Number in Foster Care	12,528	12,126	11,908	11,917	11,858	11,789	11,692	11,695	11,659	11,554	11,590	11,520	11,386

\*Excludes JD placements and includes approximately 400 young children who are living in foster homes or residential care facilities with their mothers who are in foster care (8D children).

Note: Percentage change is Jun 2013 vs. Jun 2014.

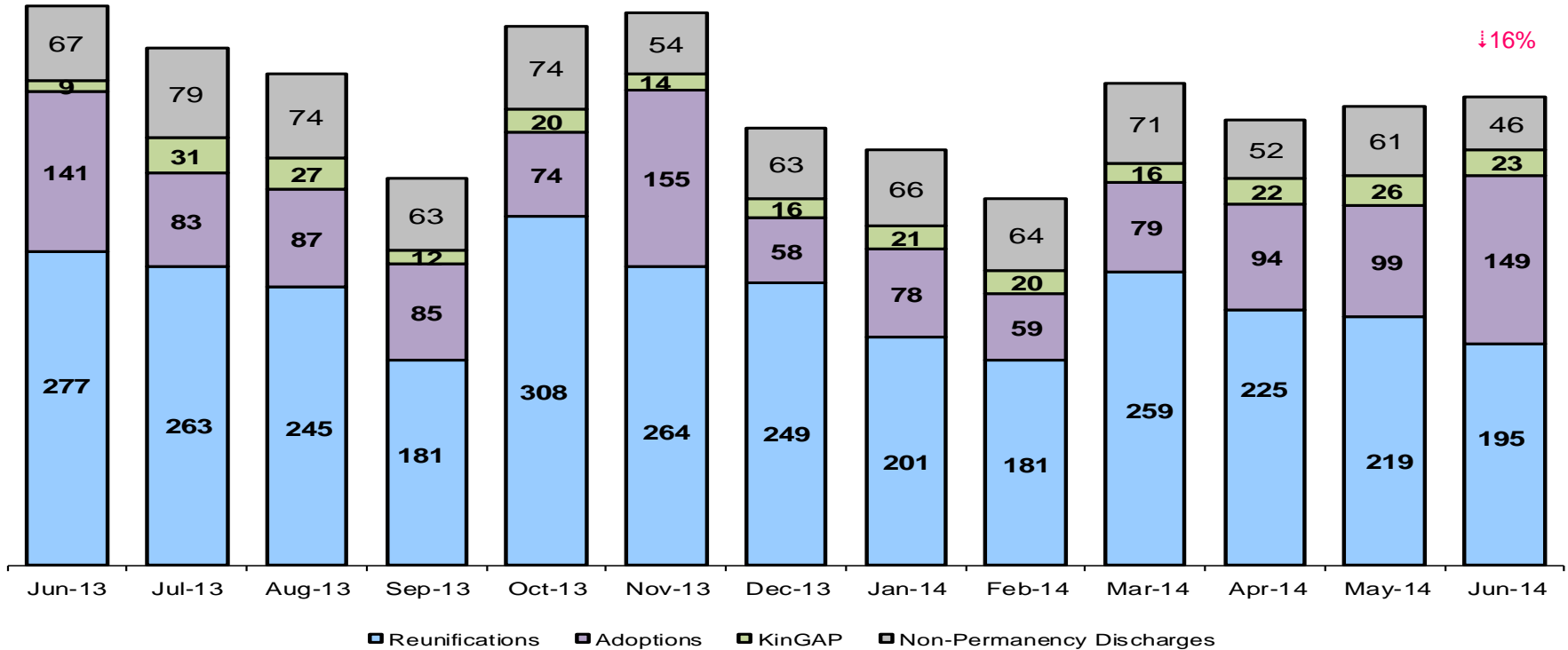
### Children Freed for Adoption, Surrender by at Least One Parent June 2013 – June 2014



	Jun 2013	Jul 2013	Aug 2013	Sep 2013	Oct 2013	Nov 2013	Dec 2013	Jan 2014	Feb 2014	Mar 2014	Apr 2014	May 2014	Jun 2014
Number Freed for Adoption	84	106	98	110	98	69	47	87	88	88	93	80	112

Note: Percentage change is for the number of children surrendered by at least on parent during June 2013 vs. June 2014.

### Permanency and Non-Permanency\* Discharges from Foster Care\*\* June 2013 – June 2014



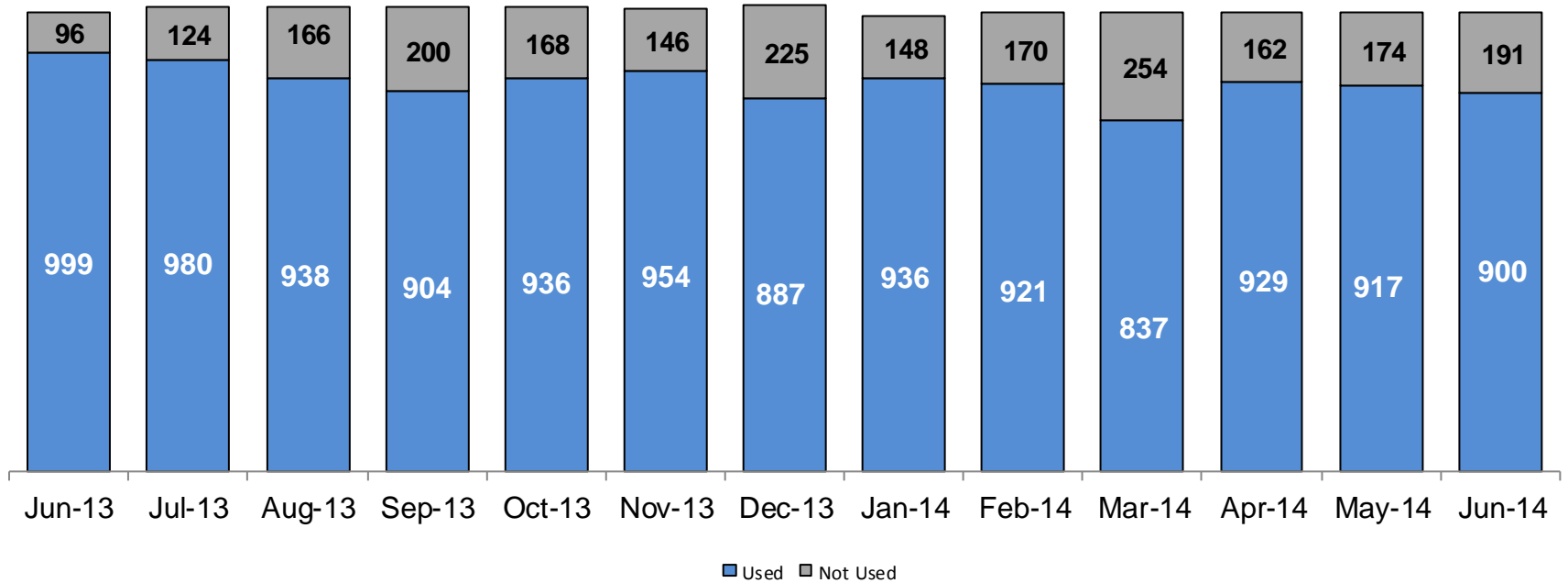
	Jun 2013	Jul 2013	Aug 2013	Sep 2013	Oct 2013	Nov 2013	Dec 2013	Jan 2014	Feb 2014	Mar 2014	Apr 2014	May 2014	Jun 2014
Number of Discharges	494	456	433	341	476	487	386	366	324	425	393	405	413

\*Non-permanency discharges include AWOL, APPLA as well as other discharge destinations such as mental institutions and correctional facilities and discharges with unspecified destinations.

\*\*Excludes discharges of youth who were in JD status at any time during their foster care spell.

Note: Percentage change is June 2013 vs. June 2014.

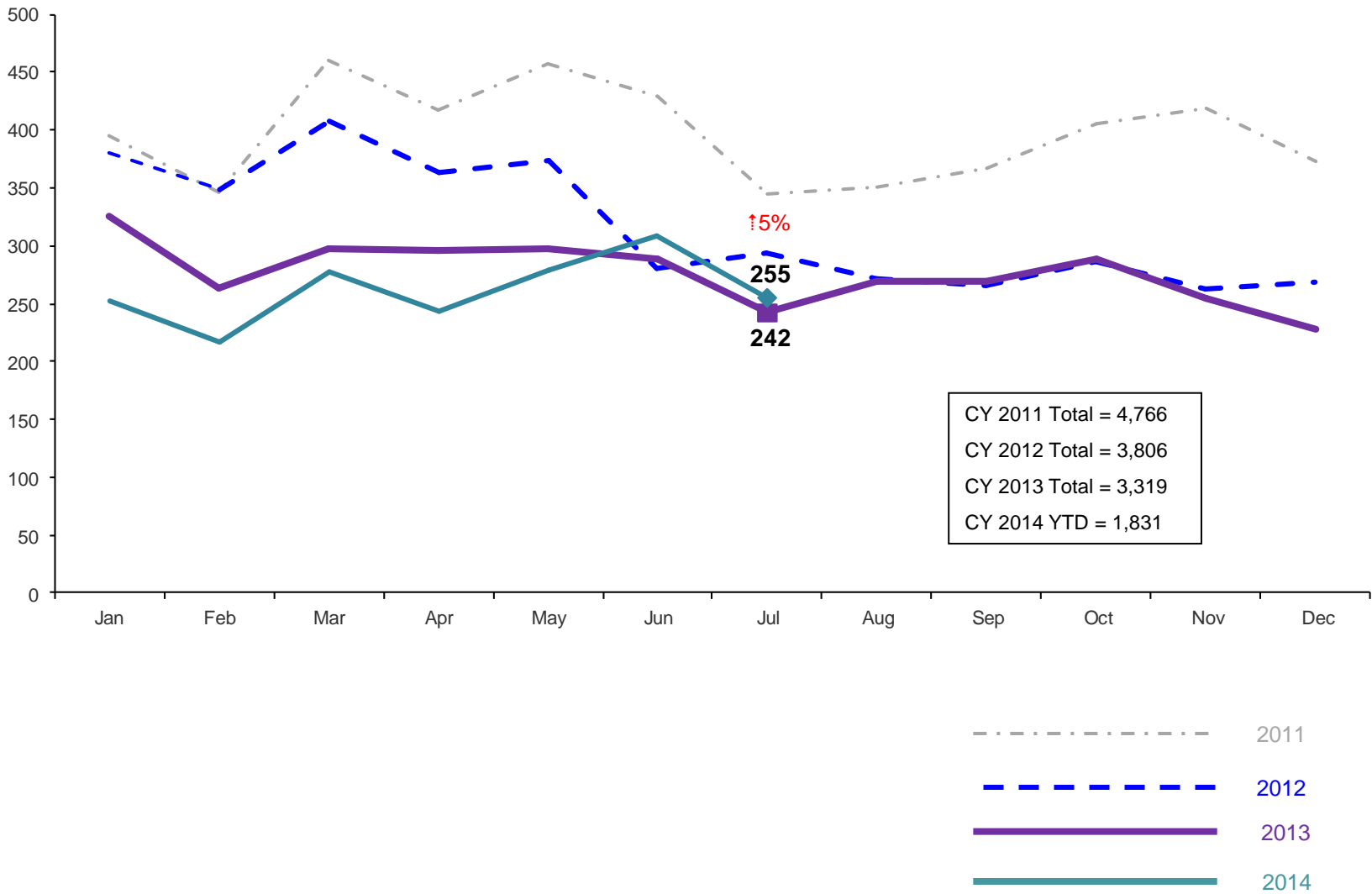
### Residential Care Capacity and Utilization, Jun 2013 – Jun 2014



	Jun 2013	Jul 2013	Aug 2013	Sep 2013	Oct 2013	Nov 2013	Dec 2013	Jan 2014	Feb 2014	Mar 2014	Apr 2014	May 2014	Jun 2014
Capacity	1,095	1,104	1,104	1,104	1,104	1,100	1,112	1,084	1,091	1,091	1,091	1,091	1,091

### Total Monthly Admissions to Detention

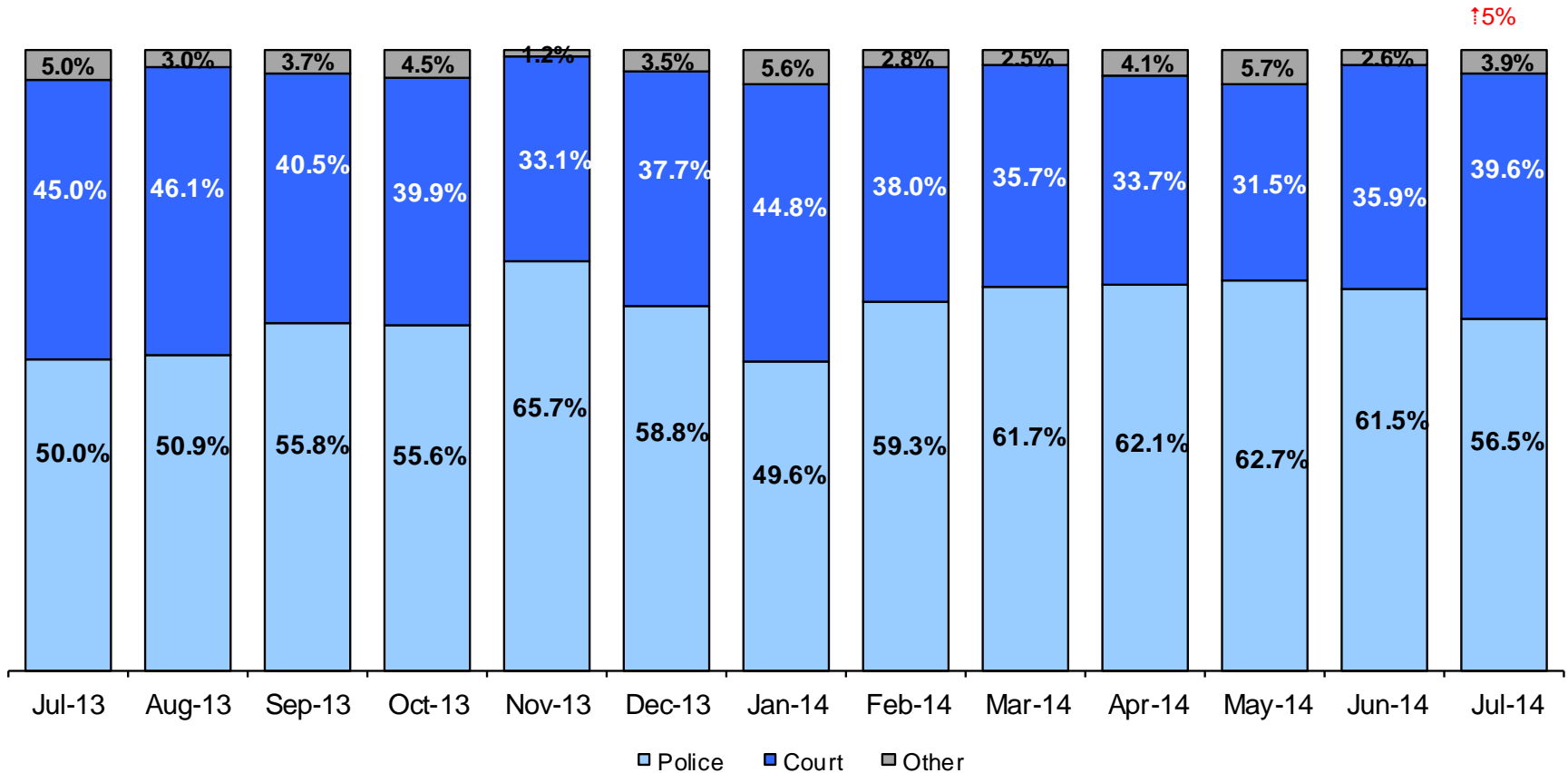
January 2011 – July 2014 (Monthly Total)



Note: Percentage change is July 2013 vs. July 2014.

### Admit Authority on Admissions

June 2013 - July 2014 (Monthly Total)



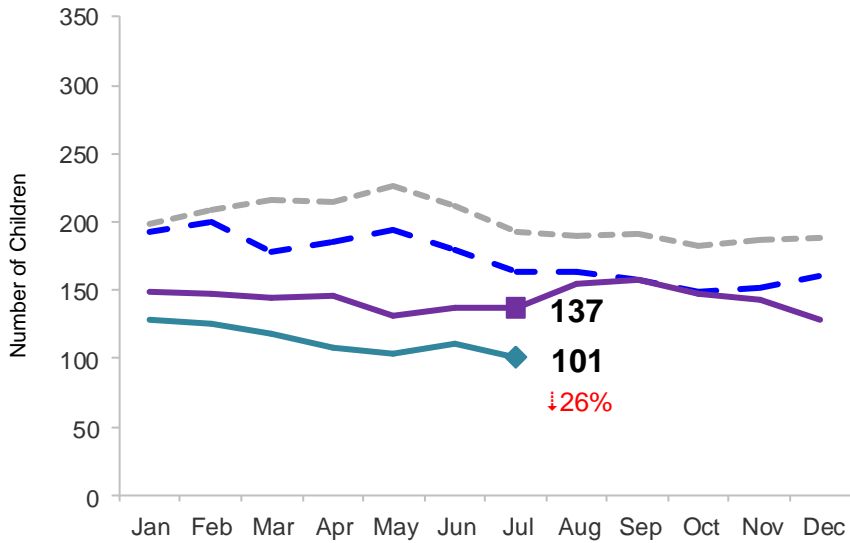
	Jul 2013	Aug 2013	Sep 2013	Oct 2013	Nov 2013	Dec 2013	Jan 2014	Feb 2014	Mar 2014	Apr 2014	May 2014	Jun 2014	Jul 2014
Number of Admissions	242	269	269	288	254	228	252	216	277	243	279	309	255

Notes: 1) Other Admit Authority includes the Sheriff Department, Department of Corrections and ACS. 2) Percentage change is July 2013 vs. July 2014.

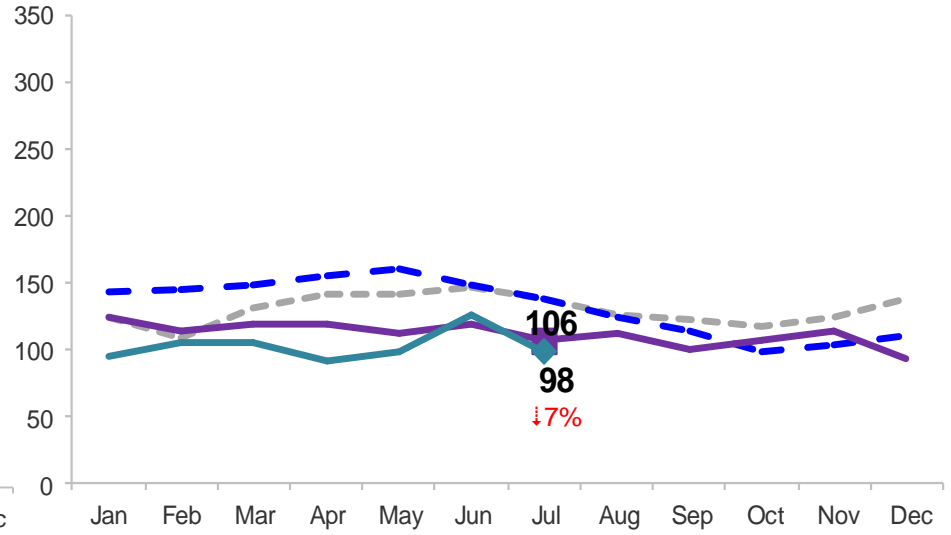
### Monthly Average Daily Population

January 2011 – July 2014

#### Secure Detention



#### Non-Secure Detention

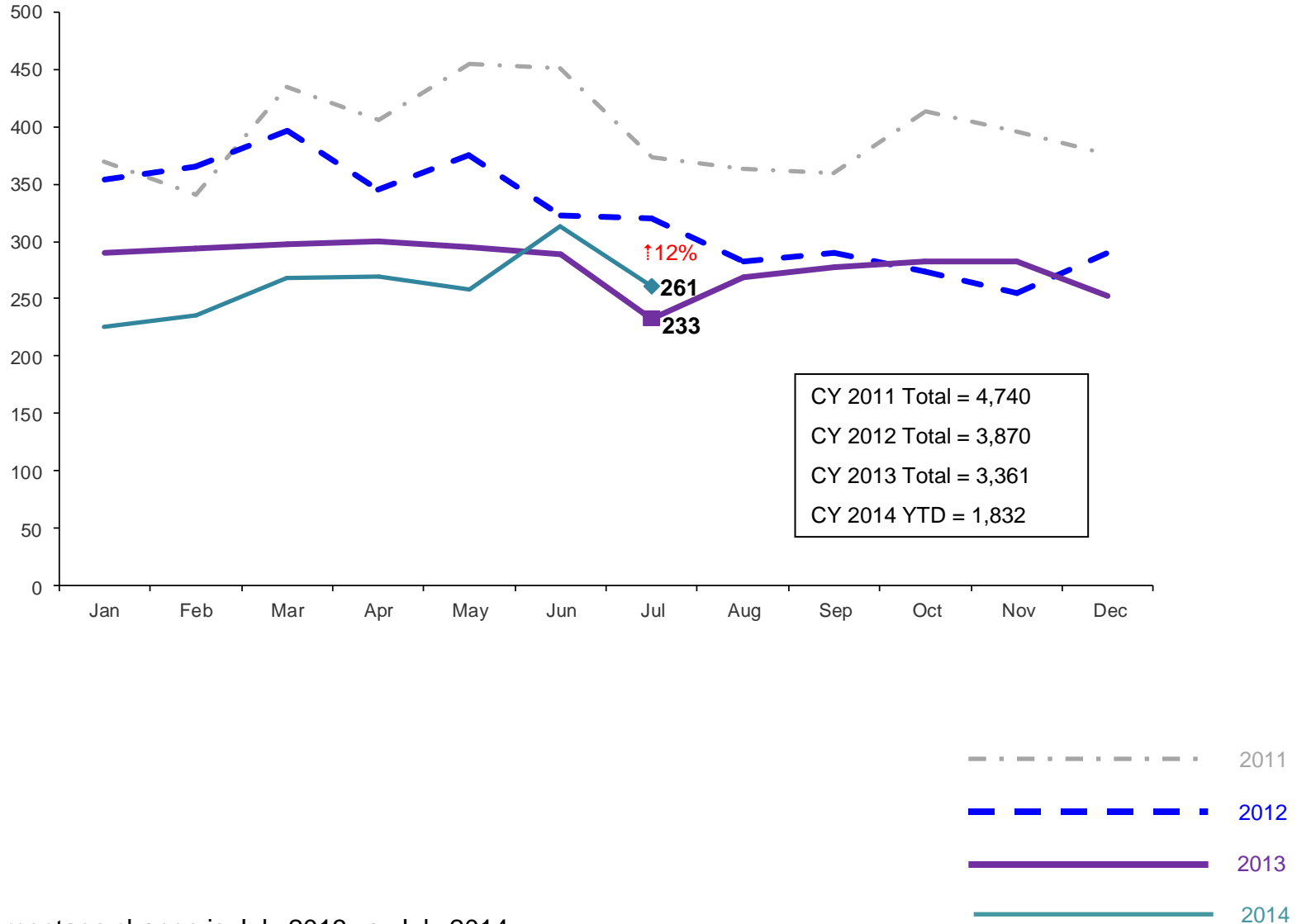


Note: Percentage change is July 2013 vs. July 2014.



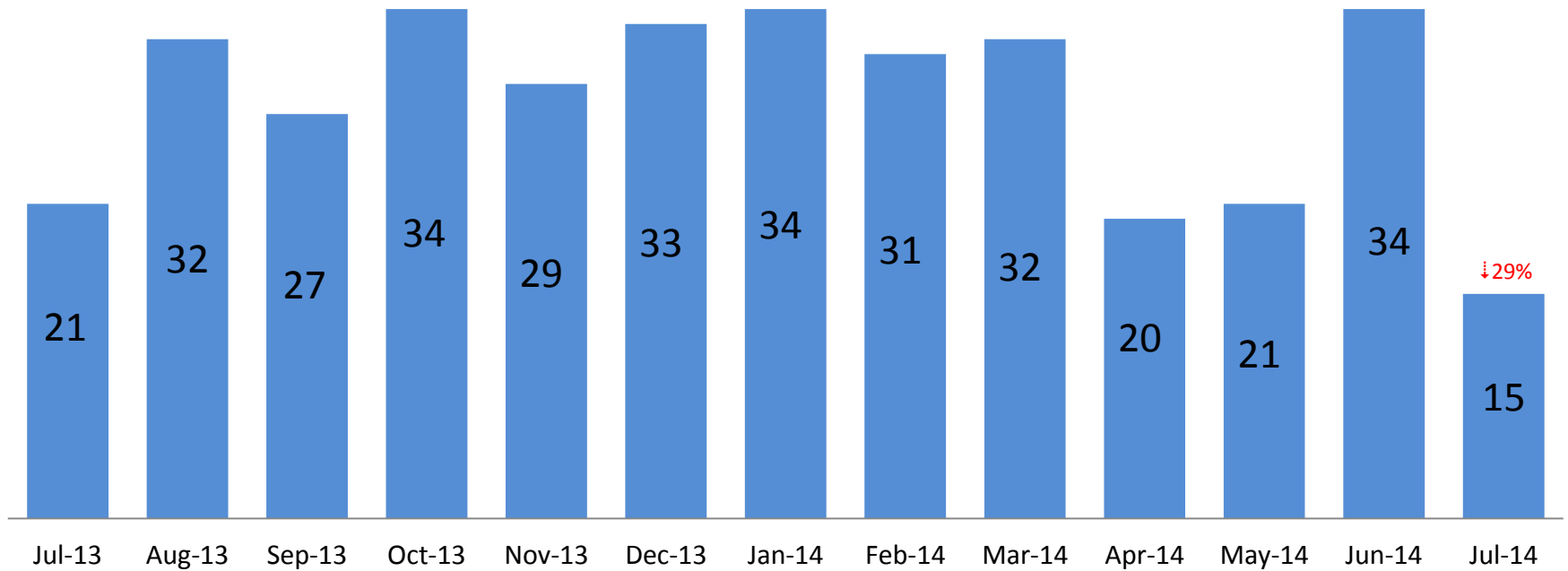
# Total Monthly Releases from Detention

January 2011 – July 2014 (Monthly Total)



Note: Percentage change is July 2013 vs. July 2014.

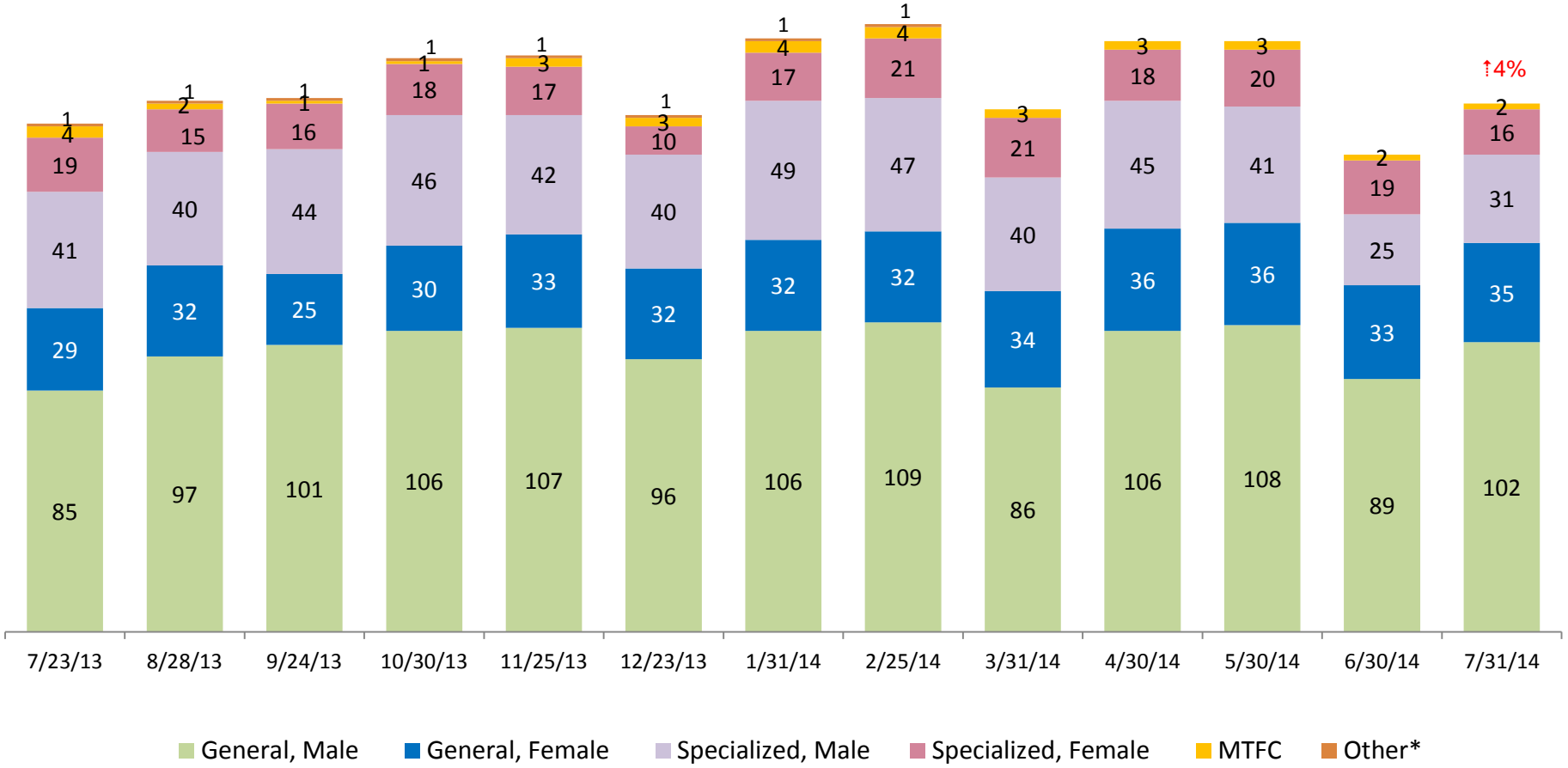
### ACS NSP Intakes June 2013 – July 2014



Note: Percentage change is July 2013 vs. July 2014.

# ACS Non-Secure Placement, in 24 hour Care

July 2013 – July 2014 (Point-in-Time)

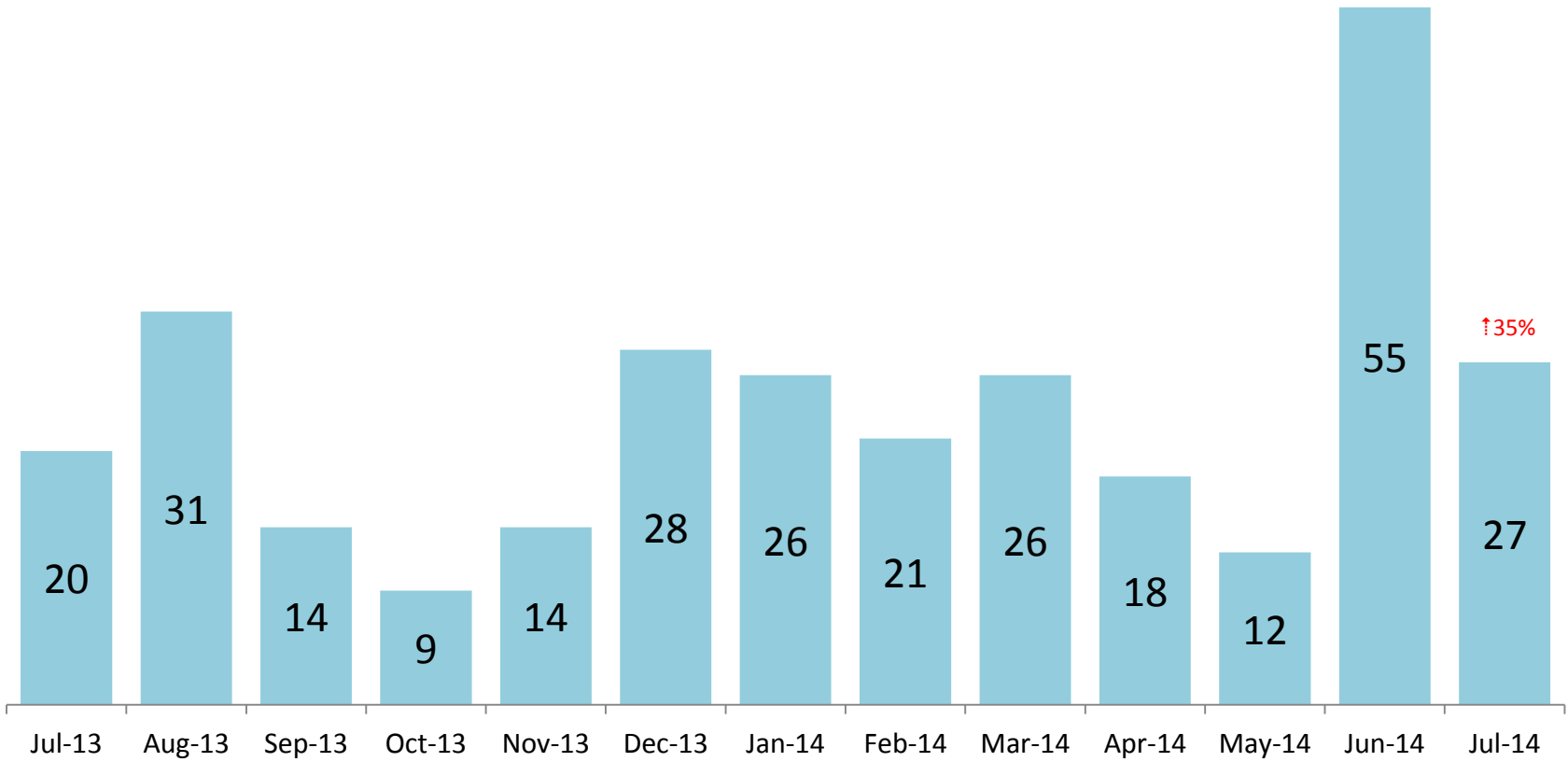


	7/23/13	8/28/13	9/24/13	10/30/13	11/25/13	12/23/13	1/31/14	2/25/14	3/31/14	4/30/14	5/30/14	6/30/14	7/31/14
Number in Placement	179	187	188	202	203	182	209	214	184	208	208	168	186

\*Other includes NYC youth in voluntary placements with Lincoln Hall, MercyFirst and Graham Windham.

Note: Percentage change is July 2013 vs. July 2014.

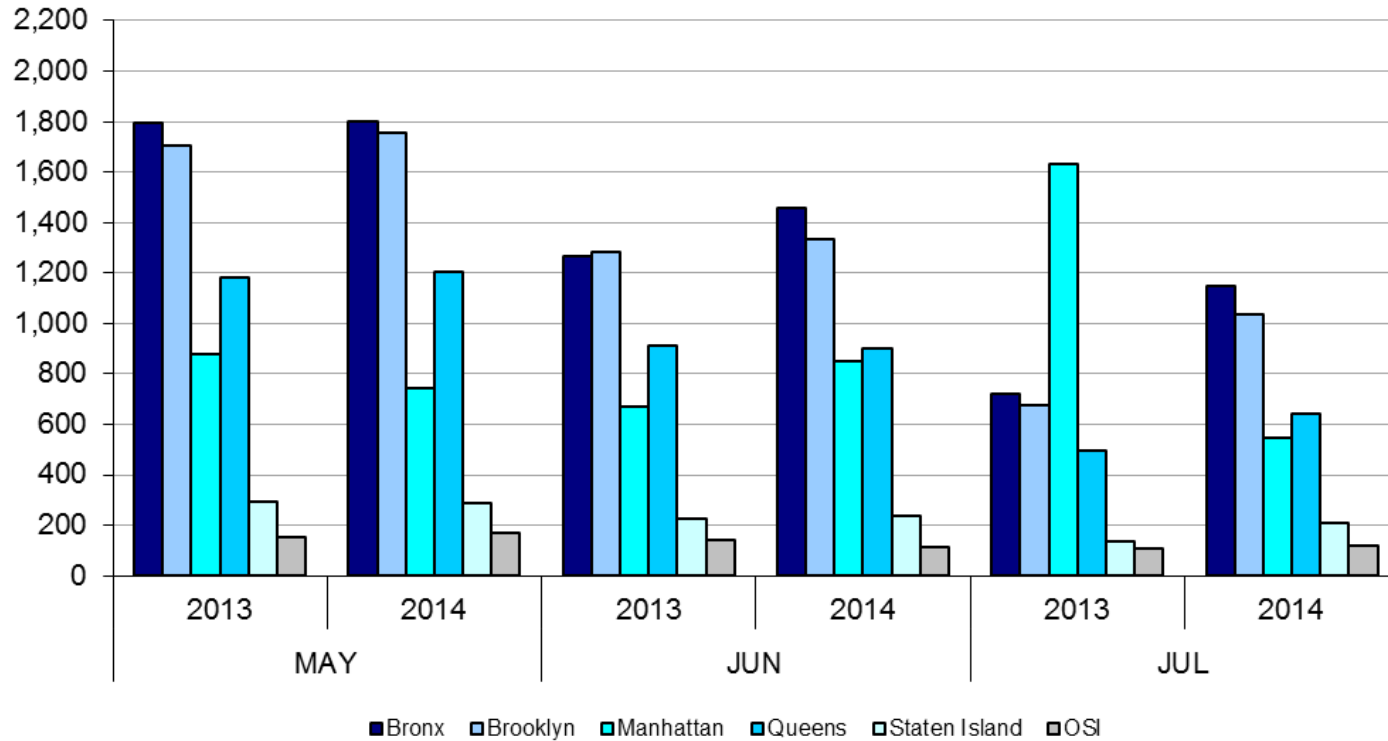
## Releases from NSP to Aftercare July 2013 – July 2014



Note: Percentage change is July 2013 vs. July 2014.

# Appendix

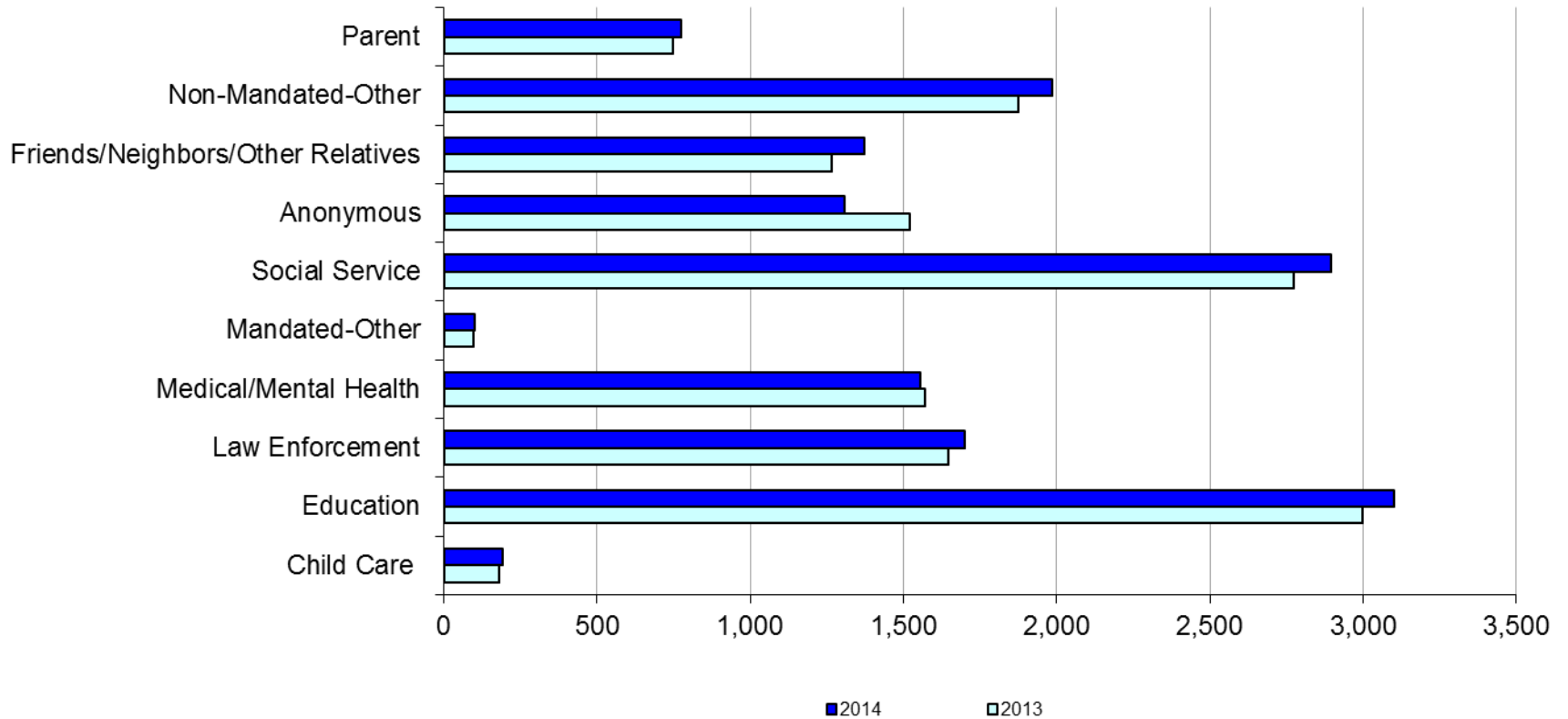
Figure 1: SCR Intakes by Borough, MAY 13 – JUL 13 and MAY 14 – JUL 14



**TABLE 1 - SCR Intake Changes by Borough, MAY 13 – JUL 13 and MAY 14 – JUL 14**

Month	Year	Bronx	Brooklyn	Manhattan	Queens	Staten Island	OSI	Other	Total
MAY	2013	1,795	1,704	881	1,182	296	153	136	6,147
	2014	1,800	1,757	746	1,205	287	172	156	6,123
	% Change	0.3%	3.1%	-15.3%	1.9%	-3.0%	12.4%	14.7%	-0.4%
JUN	2013	1,268	1,284	669	910	223	142	139	4,635
	2014	1,457	1,333	848	900	239	112	151	5,040
	% Change	14.9%	3.8%	26.8%	-1.1%	7.2%	-21.1%	8.6%	8.7%
JUL	2013	722	678	1,632	493	134	106	128	3,893
	2014	1,148	1,034	546	641	209	121	124	3,823
	% Change	59.0%	52.5%	-66.5%	30.0%	56.0%	14.2%	-3.1%	-1.8%
Total	2013	3,785	3,666	3,182	2,585	653	401	403	14,675
	2014	4,405	4,124	2,140	2,746	735	405	431	14,986
	% Change	16.4%	12.5%	-32.7%	6.2%	12.6%	1.0%	6.9%	2.1%

**Figure 2: Citywide SCR Intakes by Reporter Group, MAY 13 – JUL 13 and MAY 14 – JUL 14**

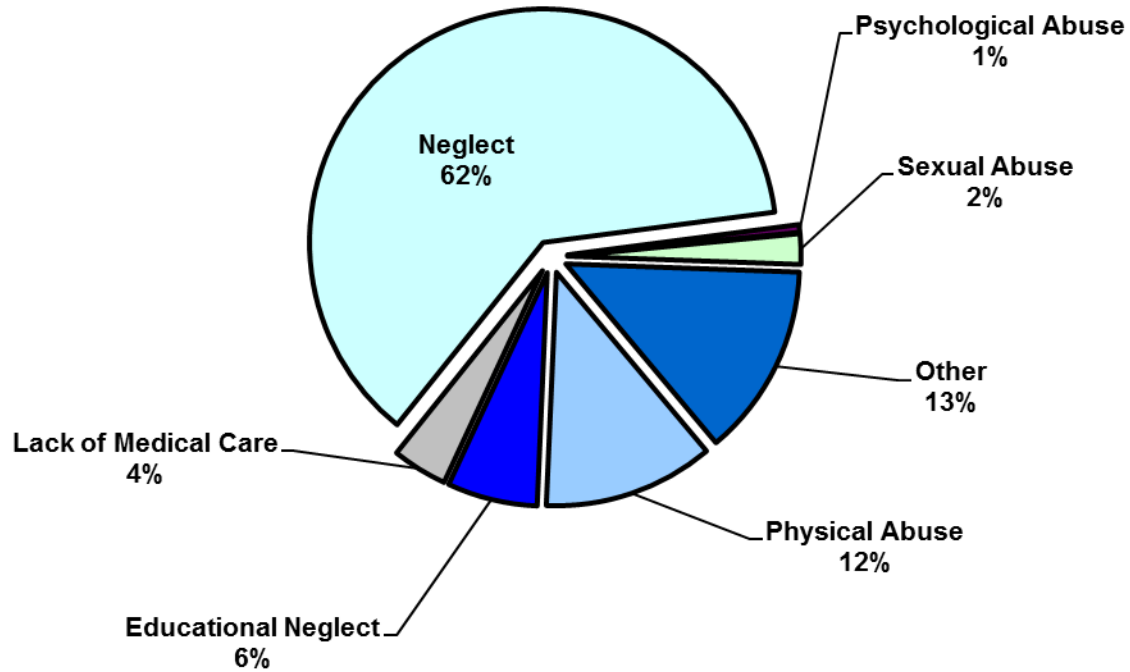


**TABLE 2 - SCR Intakes by Reporter Group, MAY 13 – JUL 13 and MAY 14 – JUL 14**

Year	Child Care/ Substitute Care Personnel	Educational Personnel	Law Enforcement	Medical/ Mental Health Personnel	Mandated- Other	Social Service Personnel	Anonymous	Friends/ Neighbors/ Other Relatives	Non- Mandated- Other	Parent	Foster Parent	Total
<b>Bronx</b>												
2013	53	894	395	424	31	812	423	379	555	202	1	4,169
2014	48	1,017	406	454	24	869	365	394	633	197	1	4,408
% Change	-9.4%	13.8%	2.8%	7.1%	-22.6%	7.0%	-13.7%	4.0%	14.1%	-2.5%	--	5.7%
<b>Brooklyn</b>												
2013	56	870	424	446	31	684	443	382	521	179	0	4,036
2014	41	871	478	429	19	732	399	391	563	206	0	4,129
% Change	-26.8%	0.1%	12.7%	-3.8%	-38.7%	7.0%	-9.9%	2.4%	8.1%	15.1%	--	2.3%
<b>Manhattan</b>												
2013	24	350	309	237	20	387	219	169	305	88	0	2,108
2014	26	350	315	229	21	457	172	196	286	87	1	2,140
% Change	8.3%	0.0%	1.9%	-3.4%	5.0%	18.1%	-21.5%	16.0%	-6.2%	-1.1%	--	1.5%
<b>Queens</b>												
2013	27	652	352	292	8	547	274	218	287	131	0	2,788
2014	26	661	318	309	22	540	206	241	280	143	0	2,746
% Change	-3.7%	1.4%	-9.7%	5.8%	175.0%	-1.3%	-24.8%	10.6%	-2.4%	9.2%	--	-1.5%
<b>Staten Island</b>												
2013	7	175	65	69	3	113	115	60	67	44	0	718
2014	12	149	73	57	7	101	109	91	93	42	1	735
% Change	71.4%	-14.9%	12.3%	-17.4%	133.3%	-10.6%	-5.2%	51.7%	38.8%	-4.5%	--	2.4%
<b>OSI</b>												
2013	12	28	22	54	4	95	30	28	103	67	2	445
2014	30	25	21	44	5	65	33	29	90	63	0	405
% Change	150.0%	-10.7%	-4.5%	-18.5%	25.0%	-31.6%	10.0%	3.6%	-12.6%	-6.0%	--	-9.0%
<b>Other</b>												
2013	3	30	81	48	1	135	16	31	39	37	1	422
2014	7	27	89	35	2	130	22	32	42	38	0	424
% Change	133.3%	-10.0%	9.9%	-27.1%	100.0%	-3.7%	37.5%	3.2%	7.7%	2.7%	--	0.5%
<b>Citywide</b>												
2013	182	2,999	1,648	1,570	98	2,773	1,520	1,267	1,877	748	4	14,686
2014	190	3,100	1,700	1,557	100	2,894	1,306	1,374	1,987	776	3	14,987
% Change	4.4%	3.4%	3.2%	-0.8%	2.0%	4.4%	-14.1%	8.4%	5.9%	3.7%	-25.0%	2.0%



**Figure 3: SCR Allegations, MAY 14 – JUL 14**



Total Allegations = 38,448

**TABLE 3 - SCR Allegations, MAY 13 - JUL 13 and MAY 14 - JUL 14**

Year	Physical Abuse	Educational Neglect	Lack of Medical Care	Neglect	Psychological Abuse	Sexual Abuse	Other	Total
<b>Bronx</b>								
2013	1,224	798	434	6,615	65	186	1,573	10,895
2014	1,316	945	521	7,288	51	226	1,523	11,870
% Change	7.5%	18.4%	20.0%	10.2%	-21.5%	21.5%	-3.2%	8.9%
<b>Brooklyn</b>								
2013	1,323	700	398	6,599	60	224	1,604	10,908
2014	1,280	701	394	6,693	55	237	1,442	10,802
% Change	-3.3%	0.1%	-1.0%	1.4%	-8.3%	5.8%	-10.1%	-1.0%
<b>Manhattan</b>								
2013	517	285	188	2714	29	108	667	4,508
2014	465	253	162	2725	28	85	535	4,253
% Change	-10.1%	-11.2%	-13.8%	0.4%	-3.4%	-21.3%	-19.8%	-5.7%
<b>Queens</b>								
2013	939	348	223	4,146	61	150	1,024	6,891
2014	895	332	252	4,117	46	141	894	6,677
% Change	-4.7%	-4.6%	13.0%	-0.7%	-24.6%	-6.0%	-12.7%	-3.1%
<b>Staten Island</b>								
2013	240	117	49	1,221	13	33	334	2,007
2014	212	99	50	1,383	9	39	379	2,171
% Change	-11.7%	-15.4%	2.0%	13.3%	-30.8%	18.2%	13.5%	8.2%
<b>OSI</b>								
2013	276	30	49	1,276	10	73	177	1,891
2014	250	41	63	1,166	7	53	156	1,736
% Change	-9.4%	36.7%	28.6%	-8.6%	-30.0%	-27.4%	-11.9%	-8.2%
<b>Other</b>								
2013	124	30	36	650	5	34	237	1,116
2014	119	29	26	532	9	28	196	939
% Change	-4.0%	-3.3%	-27.8%	-18.2%	80.0%	-17.6%	-17.3%	-15.9%
<b>Citywide</b>								
2013	4,643	2,308	1,377	23,221	243	808	5,616	38,216
2014	4,537	2,400	1,468	23,904	205	809	5,125	38,448
% Change	-2.3%	4.0%	6.6%	2.9%	-15.6%	0.1%	-8.7%	0.6%

TABLE 4 - Purchased Preventive Cases  
 Opened and Closed  
 January 2012 to June 2014

Month	Opened Cases	Closed Cases
<b>2012</b>		
Jan-12	870	629
Feb-12	889	835
Mar-12	944	991
Apr-12	997	870
May-12	1,117	979
Jun-12	965	869
Jul-12	853	979
Aug-12	917	1,007
Sep-12	727	900
Oct-12	875	915
Nov-12	738	702
Dec-12	938	871
<b>2013</b>		
Jan-13	960	884
Feb-13	873	916
Mar-13	962	1,171
Apr-13	940	988
May-13	864	1,337
Jun-13	863	780
Jul-13	868	1,004
Aug-13	802	1,084
Sep-13	844	724
Oct-13	933	765
Nov-13	901	685
Dec-13	1,106	552
<b>2014</b>		
Jan-14	983	640
Feb-14	987	679
Mar-14	1,146	874
Apr-14	1,074	896
May-14	1,042	888
Jun-14	976	762

**Table 5 - Referrals to Purchased Preventive Services by Source  
January 2012 to June 2014**

Month	Total Referrals	Division of Child Protection	Foster Care Agencies	PPRS Transfer	School	Self	Other Sources*
<b>2012</b>							
Jan-12	1,431	66.5%	0.7%	8.5%	3.6%	3.8%	17.0%
Feb-12	1,043	78.2%	1.1%	9.0%	1.9%	6.7%	3.1%
Mar-12	1,525	73.6%	0.9%	6.0%	1.8%	3.9%	13.8%
Apr-12	1,370	72.8%	1.0%	9.4%	1.2%	4.2%	11.4%
May-12	1,463	70.9%	1.0%	7.6%	1.1%	4.4%	15.0%
Jun-12	1,279	73.8%	0.5%	5.9%	1.0%	4.7%	14.2%
Jul-12	1,308	77.4%	1.2%	7.0%	0.3%	3.7%	10.5%
Aug-12	1,391	74.0%	0.9%	11.7%	0.3%	2.9%	10.2%
Sep-12	1,110	70.5%	1.9%	9.6%	1.2%	5.0%	11.9%
Oct-12	1,159	61.1%	1.4%	12.6%	2.7%	4.9%	17.3%
Nov-12	1,106	67.0%	1.0%	9.9%	2.2%	4.7%	15.3%
Dec-12	1,206	68.7%	0.8%	5.8%	2.7%	5.6%	16.4%
CY 2012	15,391	71.3%	1.0%	8.5%	1.6%	4.5%	13.1%
<b>2013</b>							
Jan-13	1,474	74.1%	1.2%	7.3%	1.2%	3.7%	12.5%
Feb-13	1,308	75.8%	1.1%	8.0%	1.6%	2.9%	10.6%
Mar-13	1,270	73.5%	1.2%	6.7%	2.4%	3.9%	12.3%
Apr-13	1,421	77.9%	0.8%	7.4%	0.9%	3.0%	10.1%
May-13	1,320	68.4%	0.5%	10.2%	1.5%	3.8%	15.5%
Jun-13	953	69.2%	1.2%	9.4%	2.6%	5.0%	12.6%
Jul-13	1,014	66.3%	1.9%	14.4%	1.6%	3.9%	11.9%
Aug-13	1,212	70.5%	0.7%	11.8%	0.7%	4.7%	11.6%
Sep-13	1,262	64.0%	2.1%	11.3%	1.7%	6.7%	14.2%
Oct-13	1,319	61.0%	1.1%	9.0%	2.9%	7.5%	18.5%
Nov-13	1,249	55.9%	1.6%	10.5%	4.6%	9.2%	18.3%
Dec-13	1,464	62.2%	1.2%	8.2%	2.3%	9.2%	17.0%
CY 2013	15,266	68.3%	1.2%	9.4%	2.0%	5.3%	13.8%
<b>2014</b>							
Jan-14	1,537	70.0%	1.2%	6.6%	2.3%	5.8%	14.2%
Feb-14	1,334	69.7%	0.8%	8.4%	1.7%	5.5%	13.9%
Mar-14	1,612	70.0%	1.4%	8.6%	1.6%	5.3%	13.1%
Apr-14	1,525	70.2%	0.9%	7.6%	2.1%	3.7%	15.4%
May-14	1,580	74.4%	0.7%	8.3%	1.4%	5.2%	10.0%
Jun-14	1,550	78.6%	1.2%	6.3%	1.2%	3.2%	9.4%

\*Other Community Sources includes the Department of Homeless Services, Family Court, FAP, Hospitals and Medical facilities, the NYC Housing Authority, PINS/DAS, Probation, and Sponsor Agencies.