

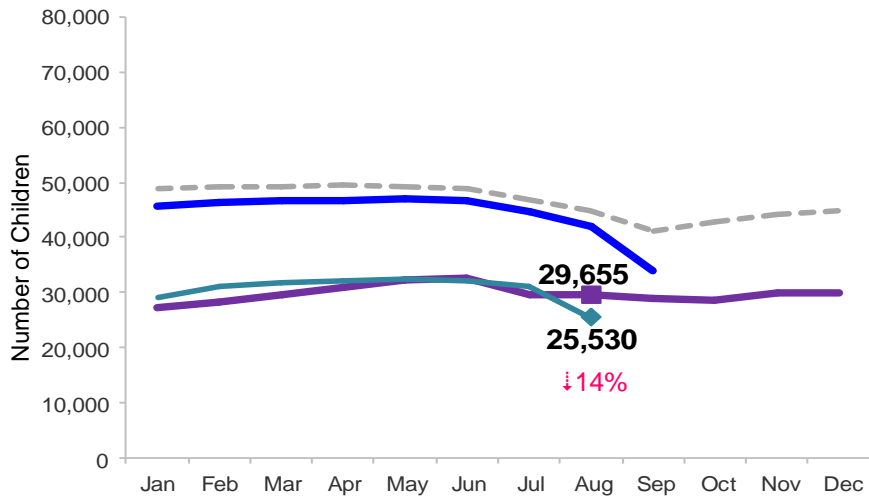


Flash

September 2014

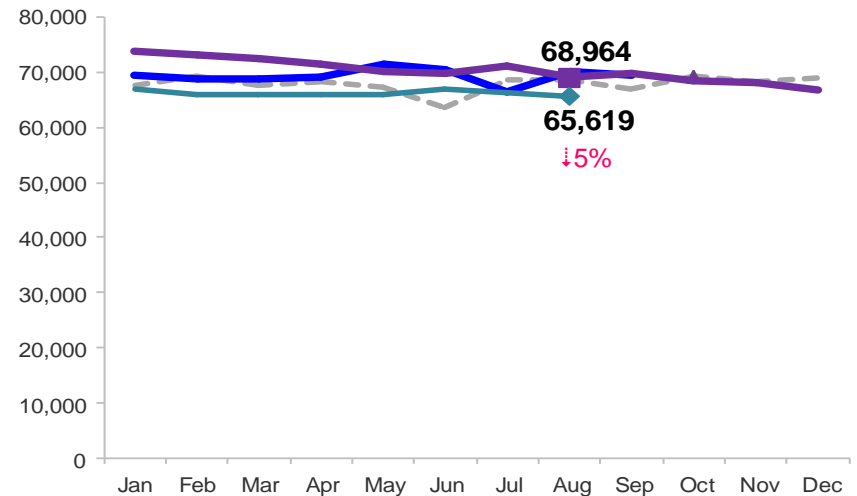
Children Enrolled in Contracted Early Learn Programs

January 2011 – August 2014 (End of Month)



Children Using Vouchers for Child Care

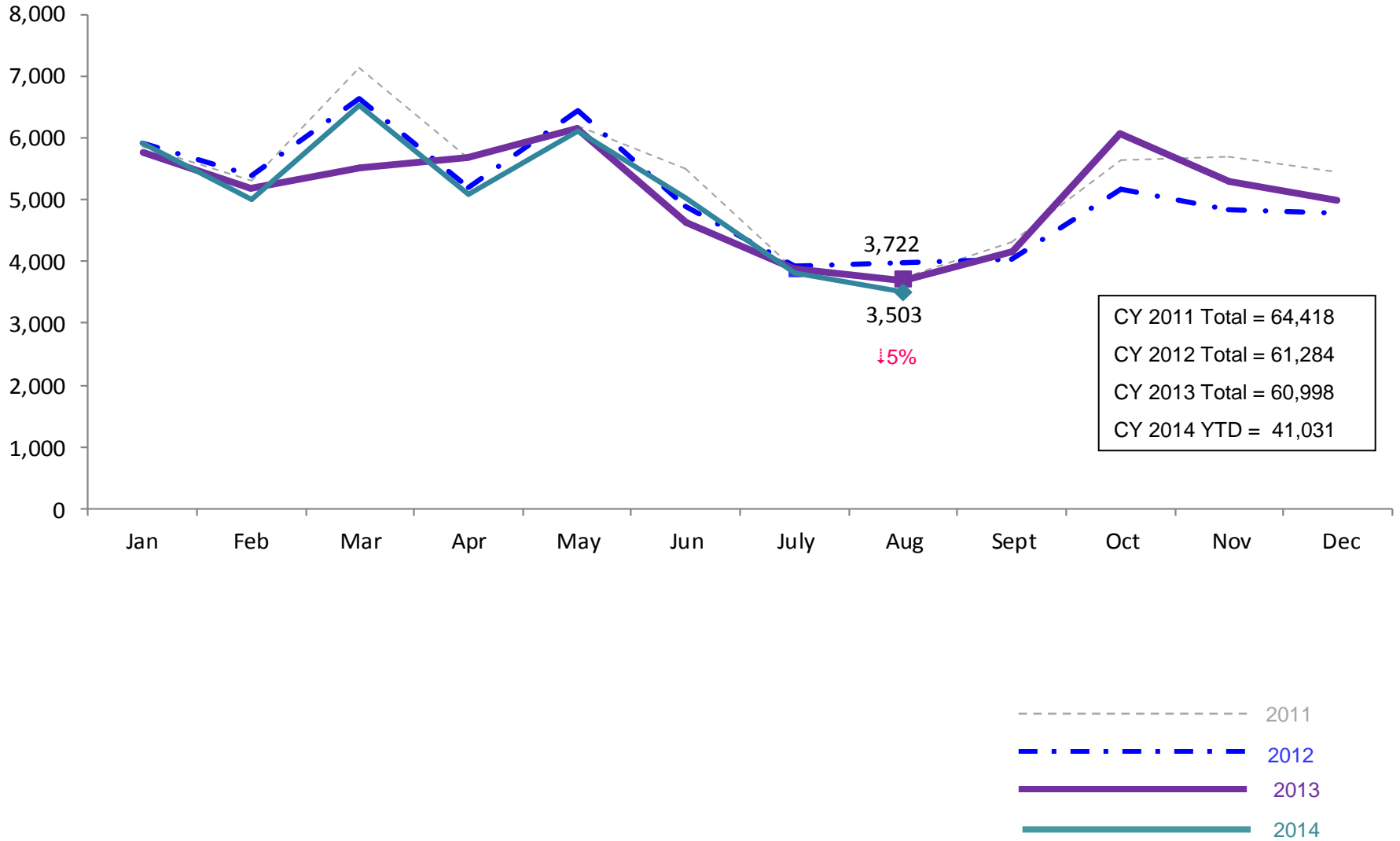
January 2011 – August 2014 (End of Month)



Notes: 1) Beginning October 1, 2012 ACS converted its early care and education system to a new model, Early Learn NYC. Enrollment data for the transitional months of October – December 2012 are not available because contractors were in the midst of implementing the data collection systems. 2) Percentage change is August 2013 vs. August 2014.

SCR Intakes

January 2011 – August 2014 (Monthly Total)

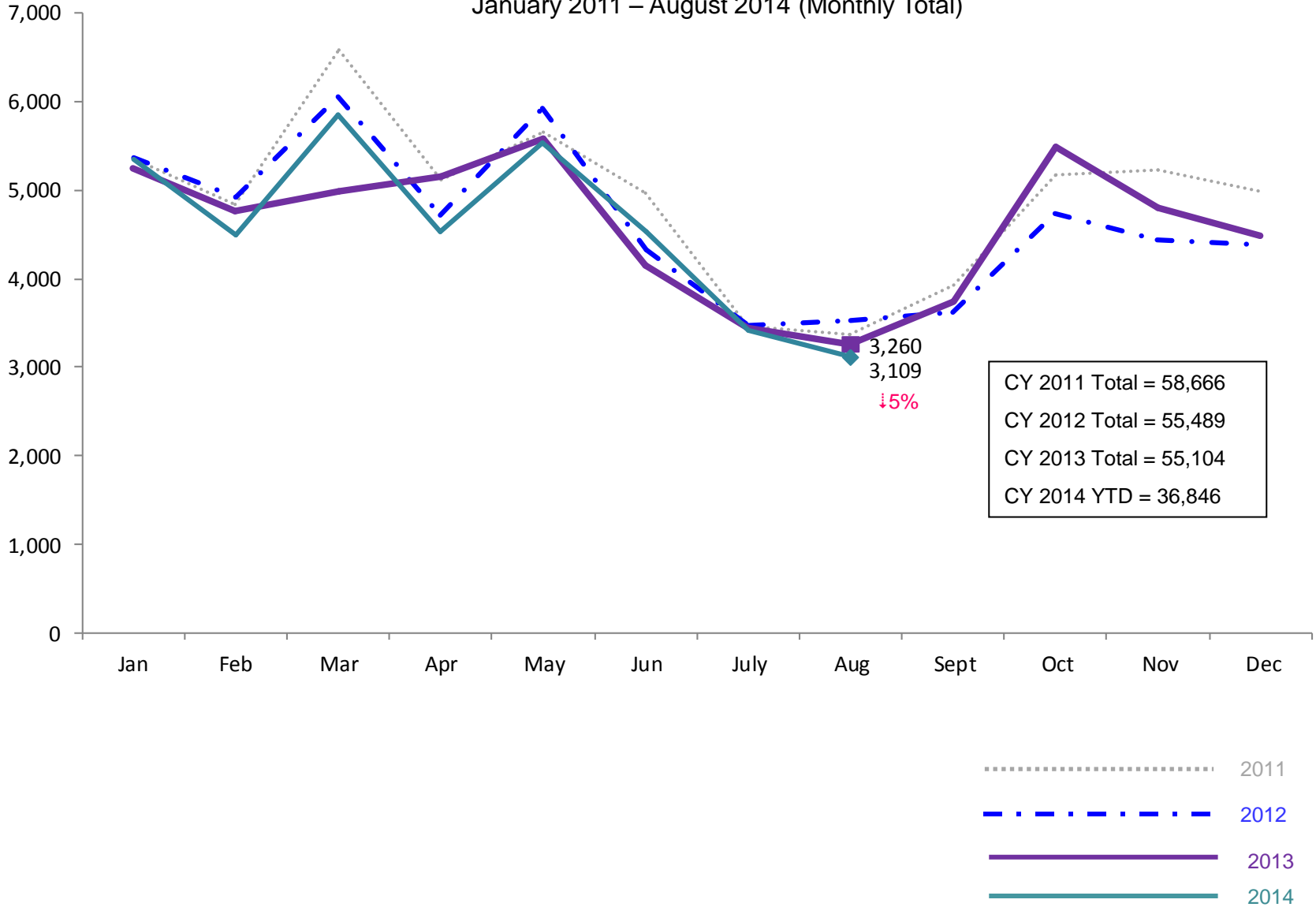


Note: Percentage change is August 2013 vs. August 2014.

See Pages 29 through 34 of the Appendix for supporting data.

SCR Consolidated Investigations

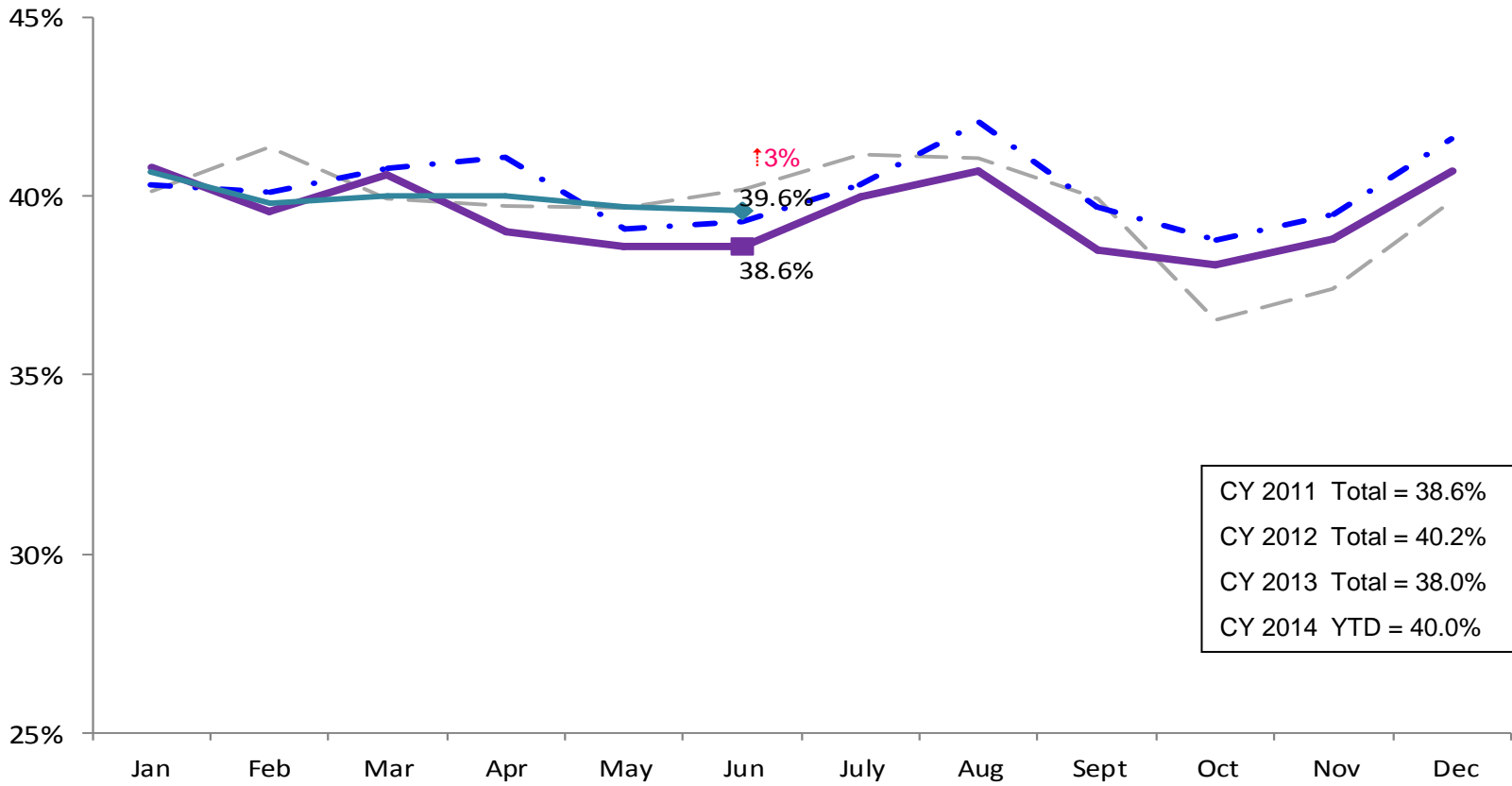
January 2011 – August 2014 (Monthly Total)



Note: Percentage change is August 2013 vs. August 2014.

SCR Investigation Indication Rate

January 2011 – June 2014



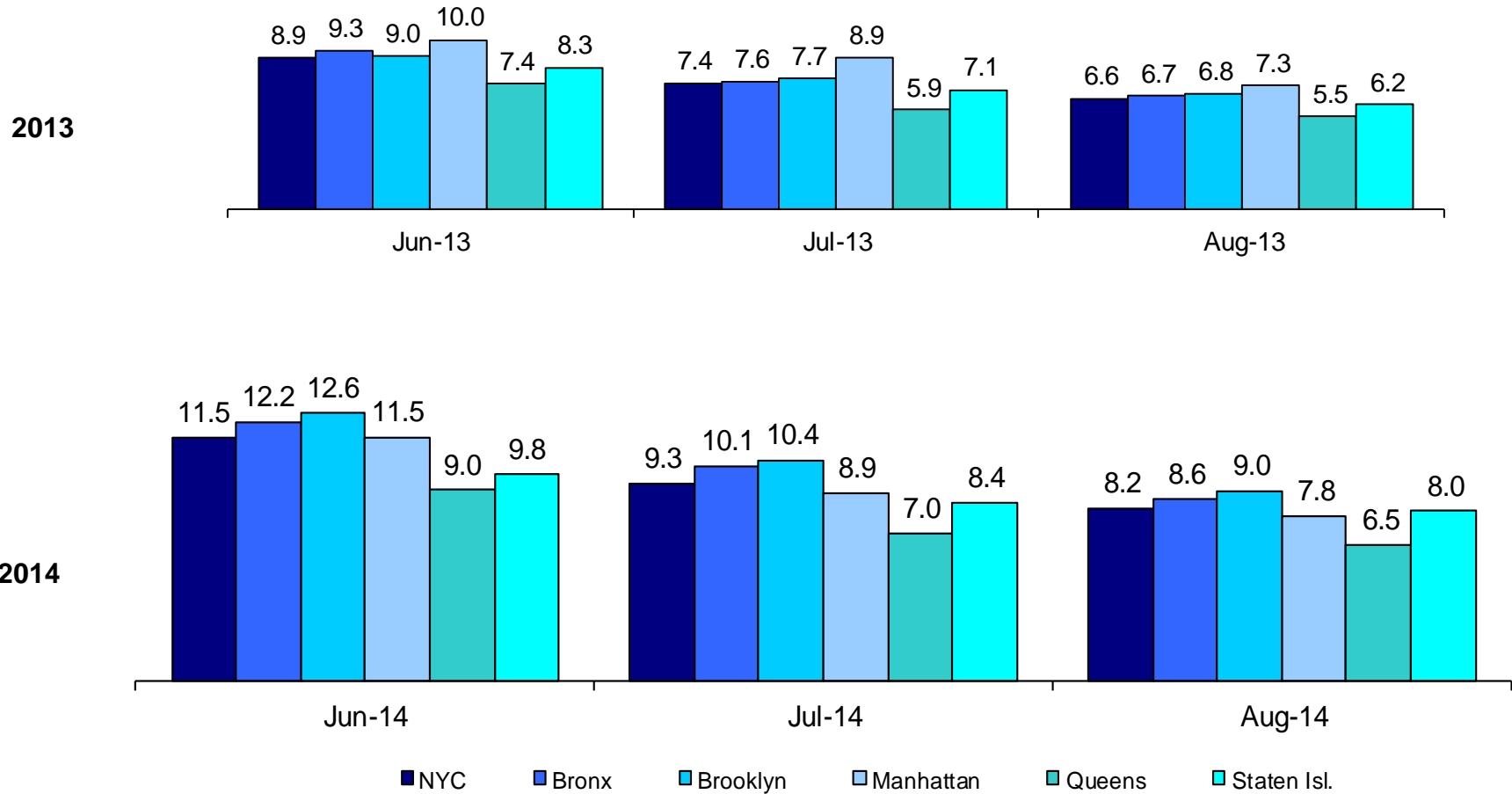
CY 2011 Total = 38.6%
 CY 2012 Total = 40.2%
 CY 2013 Total = 38.0%
 CY 2014 YTD = 40.0%

----- 2011
 - - - - - 2012
 _____ 2013
 _____ 2014

Note: Percentage change is June 2013 vs. June 2014.

Average P/D Combined Caseload*

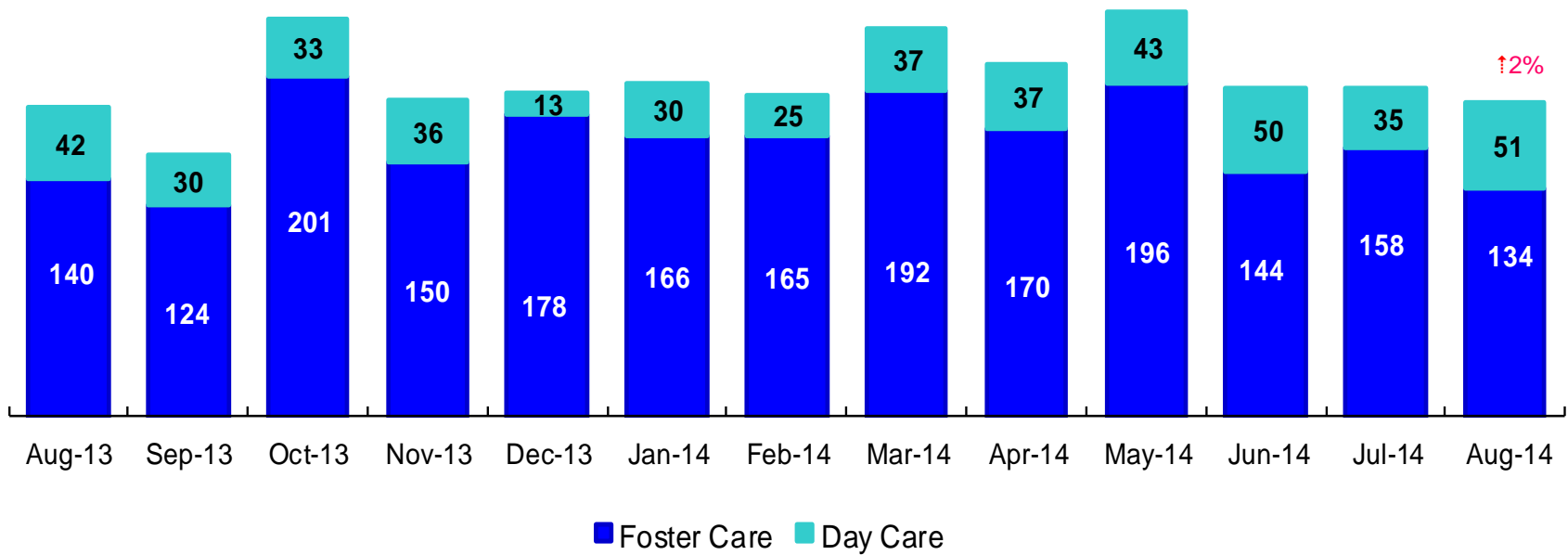
June 2013 – August 2013 & June 2014 – August 2014



* Caseloads are of protective/diagnostic caseworkers only and exclude the caseloads carried by Level I and Level II Supervisors. 6

OSI Investigations by Program

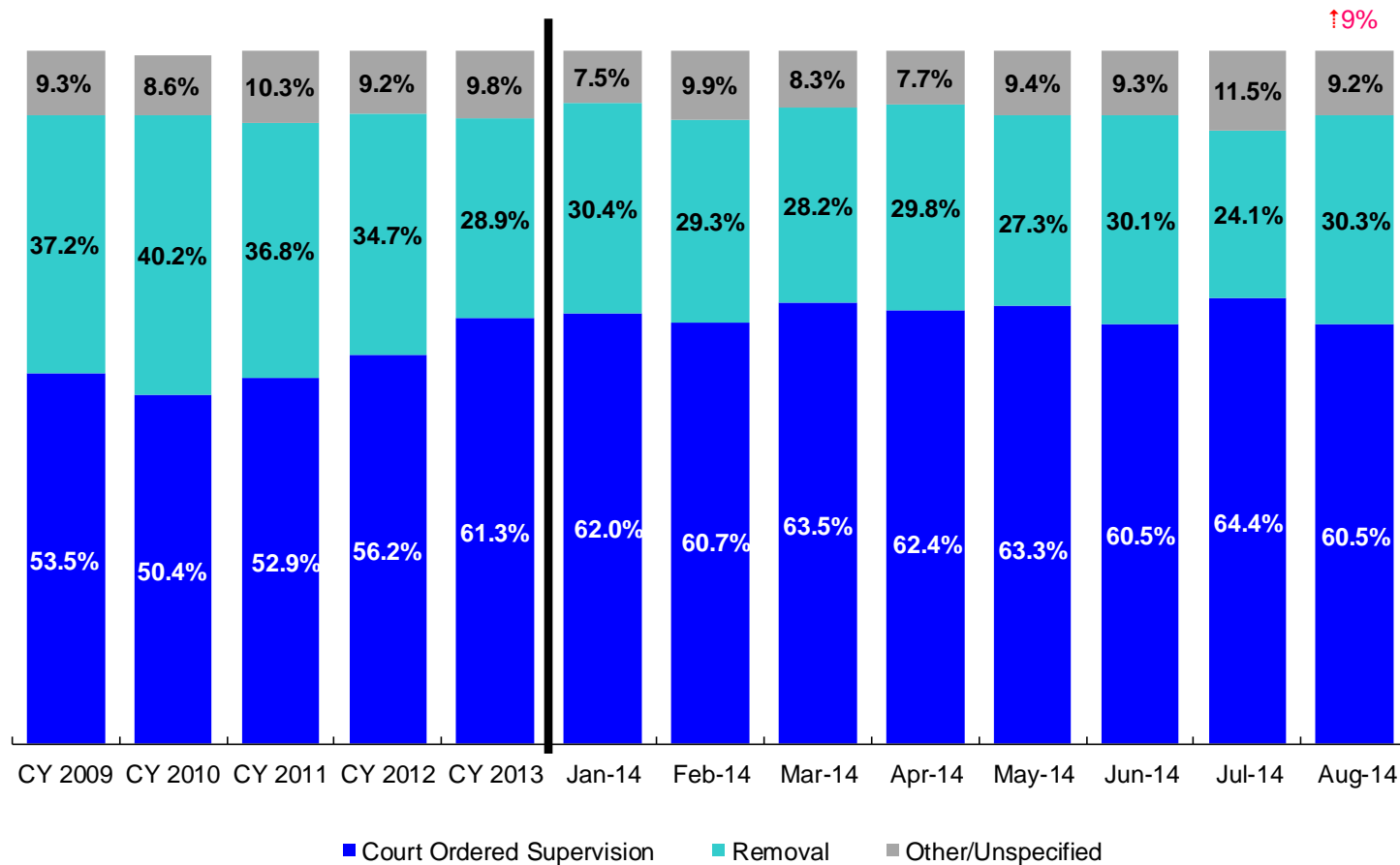
August 2013 – August 2014



	Aug 2013	Sep 2013	Oct 2013	Nov 2013	Dec 2013	Jan 2014	Feb 2014	Mar 2014	Apr 2014	May 2014	Jun 2014	July 2014	Aug 2014
Number of Investigations	182	154	234	186	191	196	190	229	207	239	194	193	185

Note: Percentage change is August 2013 vs. August 2014.

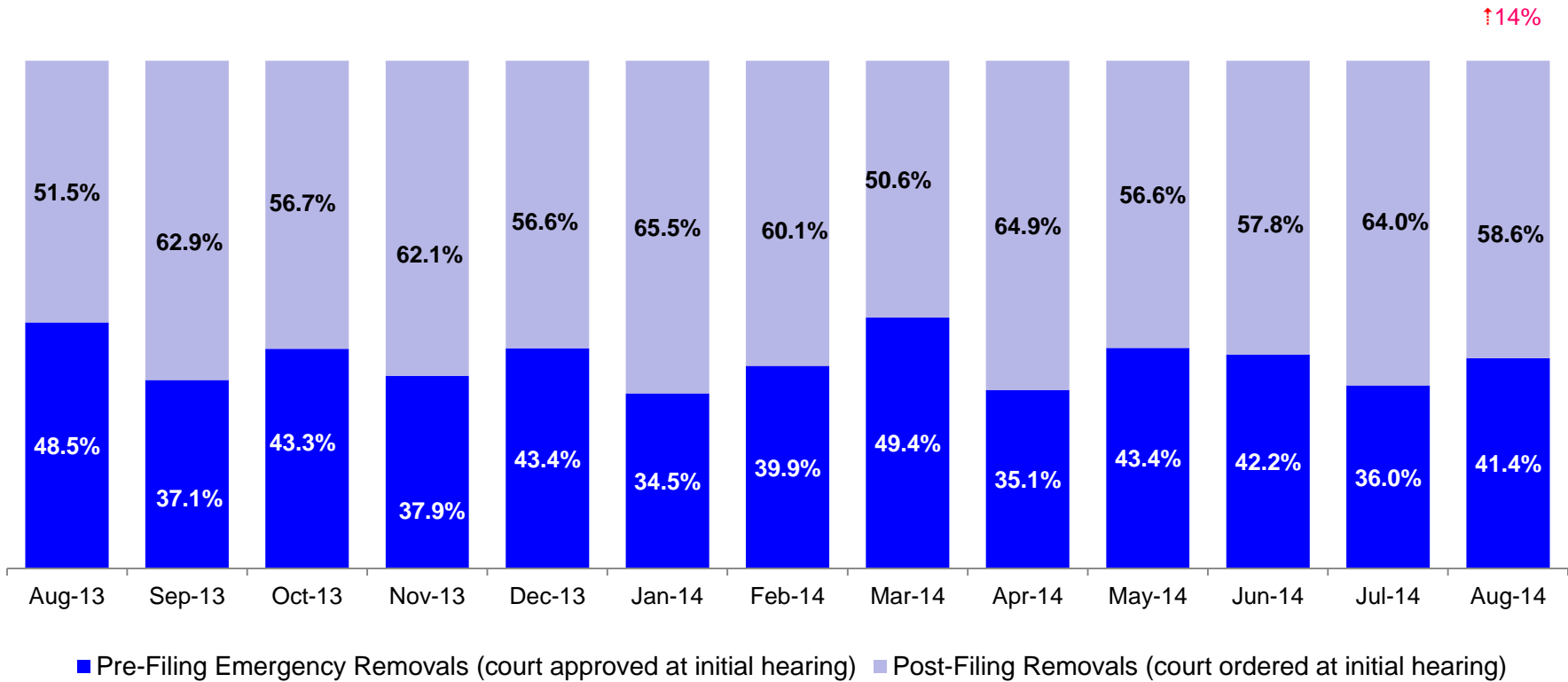
Article 10 Total Filings & Filing Outcomes, CY 2009 - CY 2013 and January – August 2014



	CY 2009	CY 2010	CY 2011	CY 2012	CY 2013	Jan 2014	Feb 2014	Mar 2014	Apr 2014	May 2014	Jun 2014	Jul 2014	Aug 2014
Art.10 Filings	11,568	10,093	9,596	8,913	9,318	743	828	905	801	978	826	713	749

Notes: 1) The category “Other/Unspecified” includes released with no supervision, no order issued and no outcome specified. Outcomes of cases heard the next day are not captured in this report. 2) Percentage change is August 2013 vs. August 2014.

Article 10 Filing Removals, August 2013 – August 2014



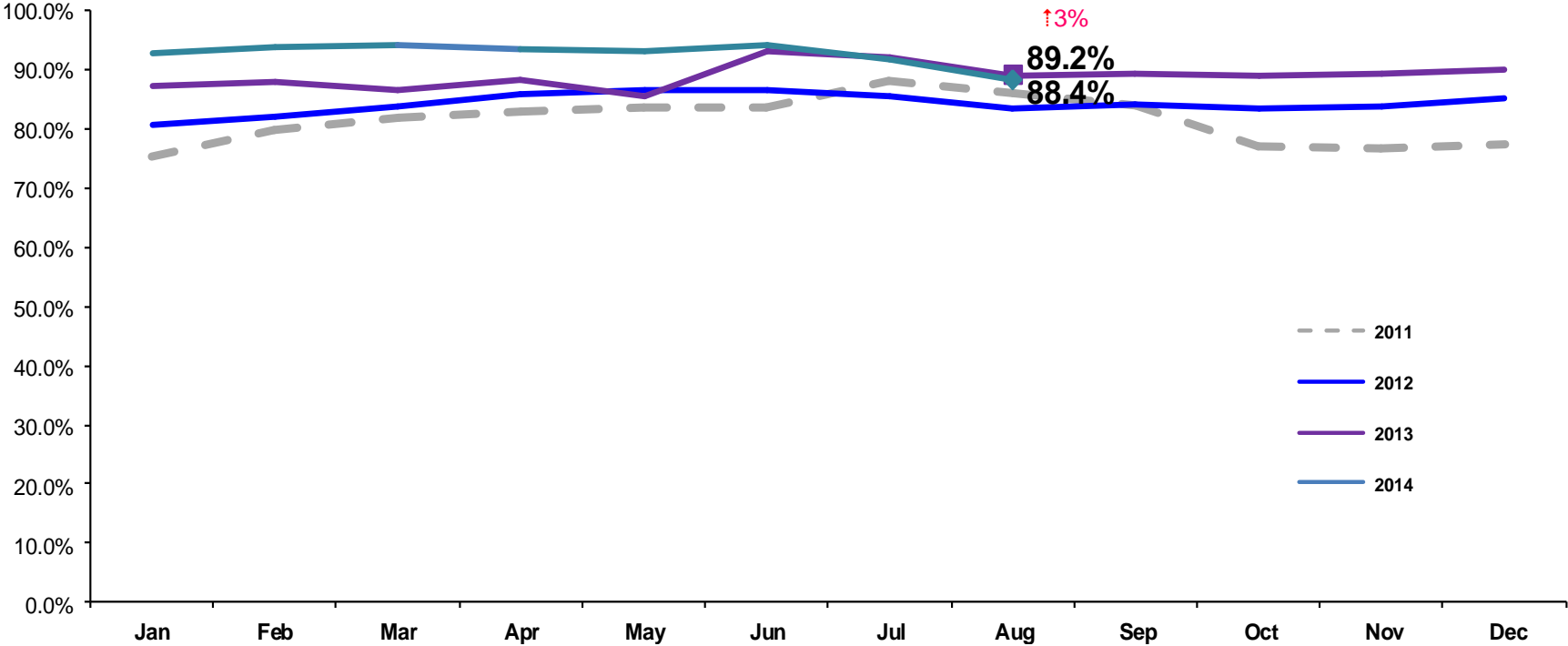
	Aug 2013	Sep 2013	Oct 2013	Nov 2013	Dec 2013	Jan 2014	Feb 2014	Mar 2014	Apr 2014	May 2014	Jun 2014	Jul 2014	Aug 2014
Number of Removals	200	229	261	224	212	226	243	255	239	267	249	172	227

Note: Percentage change is August 2013 vs. August 2014.

PPRS Utilization Rate

January 2011 – August 2014 (End of Month)

General Preventive



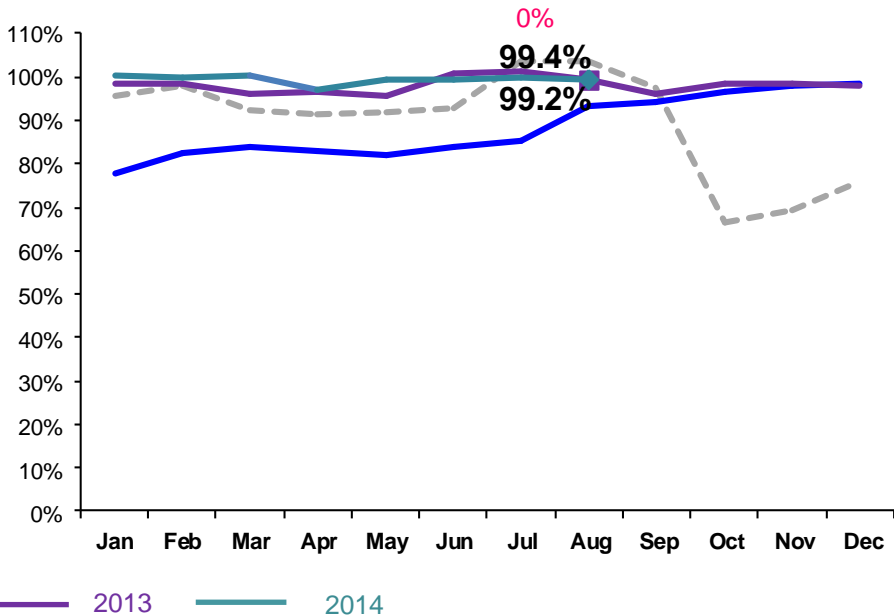
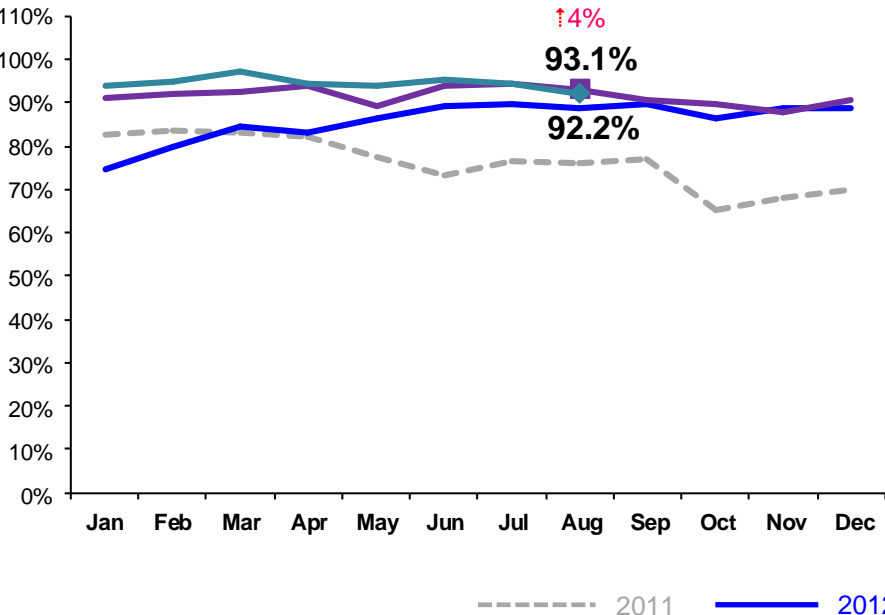
Notes: 1) Beacons programs are included in the GP utilization rates. 2) During February - June 2011 GP rates were adjusted by excluding programs in the process of being closed. GP rates were also adjusted during July – September 2011 by excluding newly opened programs. 3) During June-October 2013 GP programs in the process of converting to EBMs were excluded from the GP utilization statistics. 4) Percentage change is August 2013 vs. August 2014.

PPRS Utilization Rate

January 2011 – August 2014 (End of Month)

Family Rehabilitation Program/Family Treatment Rehabilitation

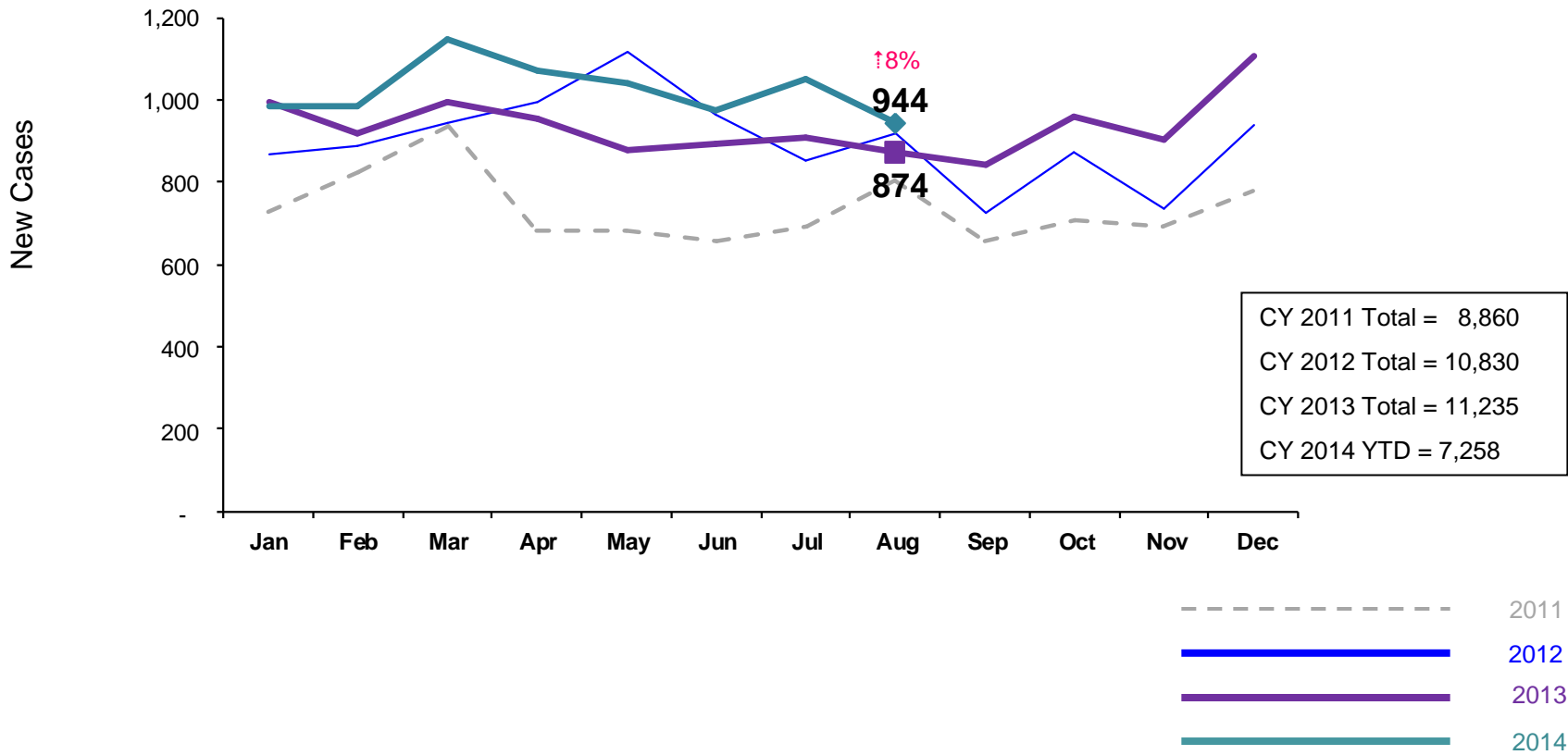
Medically Fragile



Notes: 1) During February - June 2011 FRP rates were adjusted by excluding programs in the process of being closed. FT/R rates were also adjusted during July – September 2011 by excluding newly opened programs. As of October 2011 all FT/R programs are included in the FT/R utilization rates. 2) Beginning July 2011 Family Treatment Rehabilitation programs replaced the Family Rehabilitation programs. 3) Beginning December 2011 the NYF Family Services for deaf Children and Adults program is no longer included in the medically fragile utilization rate. 4) During June -October 2013 FTR programs in the process of converting to EBMs were excluded from the FTR utilization statistics. 5) Percentage change is August 2013 vs. August 2014.

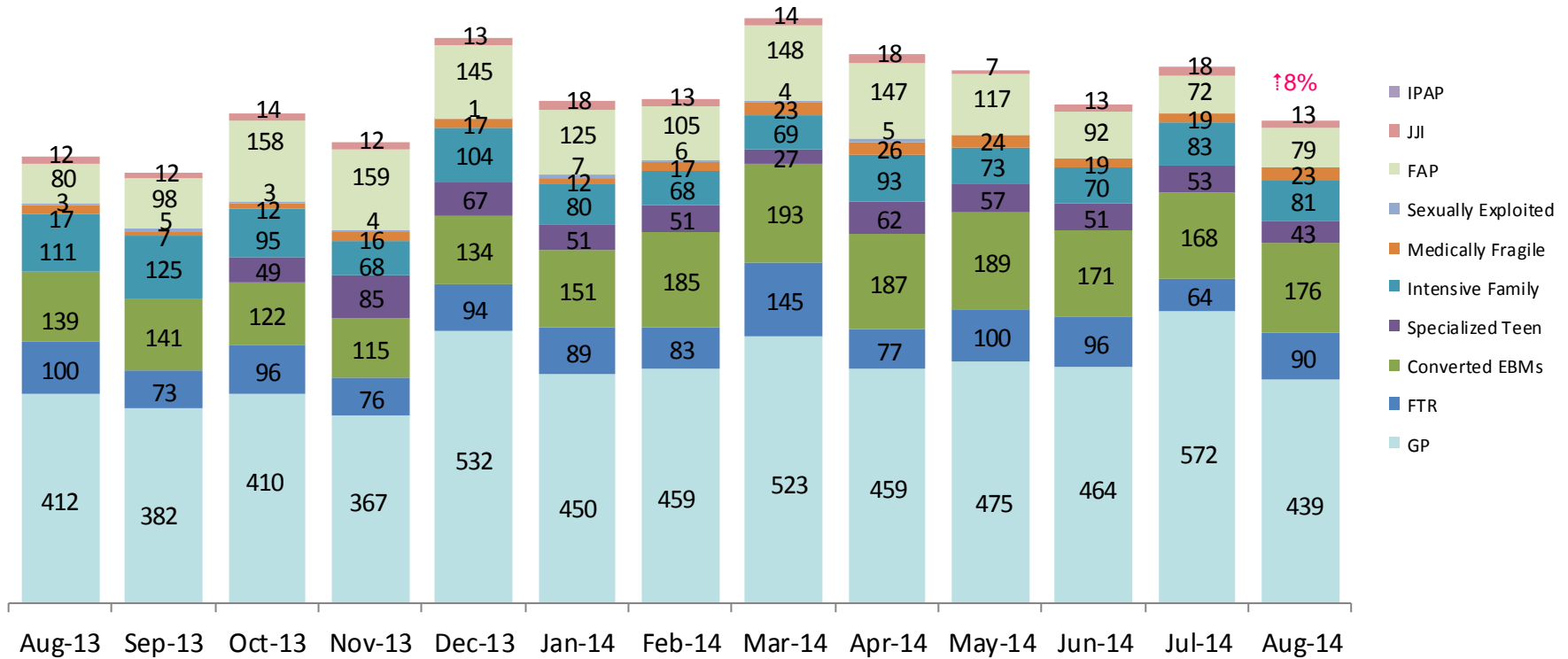
New Preventive Cases*

January 2011 – August 2014



*Notes: 1) New preventive cases do not include cases transferred from one preventive program to another. 2) Percentage change is August 2013 vs. August 2014. 3) See Pages 35 and 36 of the Appendix for supporting data.

New Preventive Cases* by Program Type August 2013 – August 2014

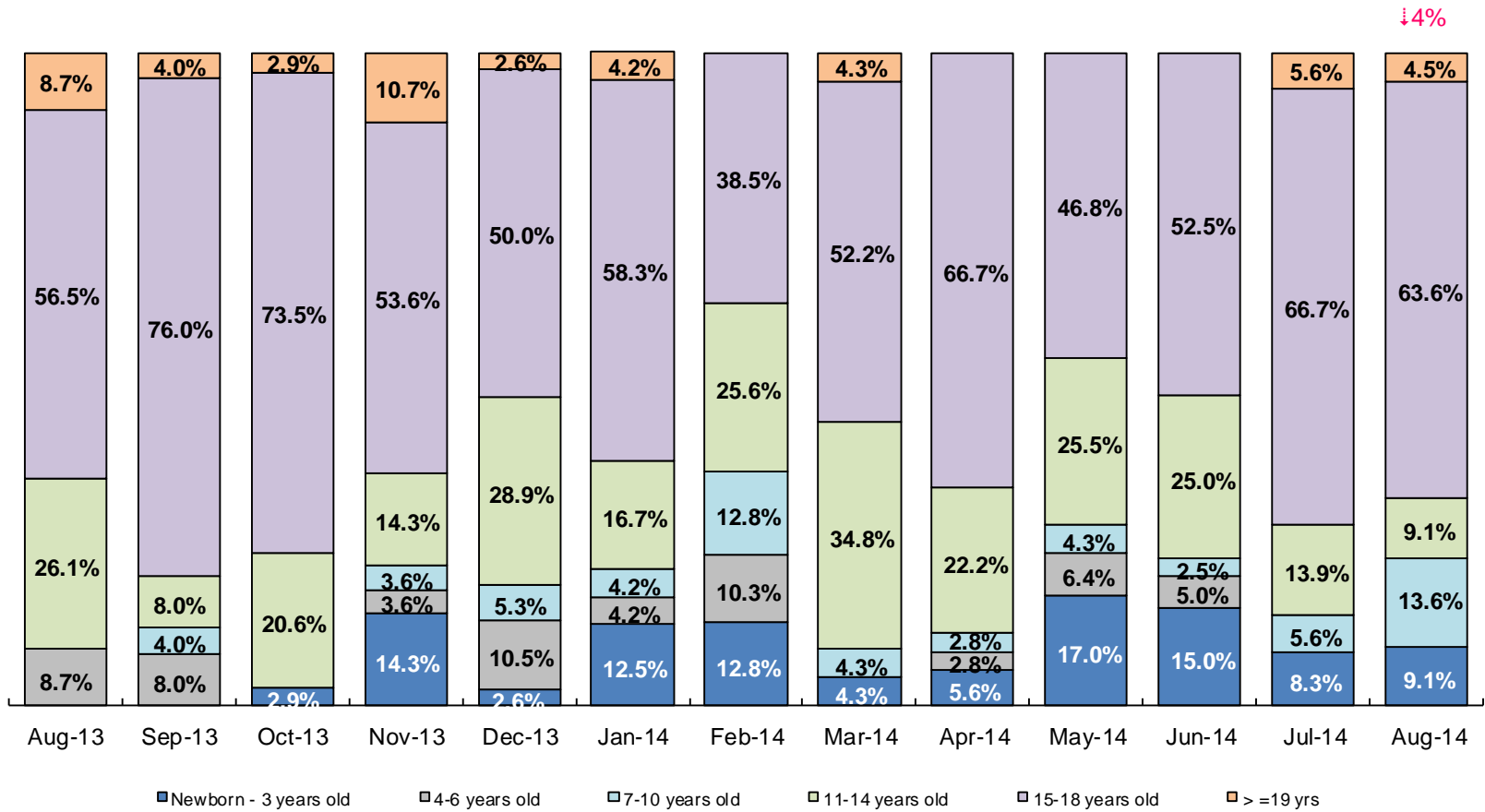


	Aug 2013	Sep 2013	Oct 2013	Nov 2013	Dec 2013	Jan 2014	Feb 2014	Mar 2014	Apr 2014	May 2014	Jun 2014	Jul 2014	Aug 2014
Number of New Preventive Cases	874	843	959	902	1,107	983	987	1,146	1,074	1,042	976	1,050	944

Notes: 1) New preventive cases do not include cases transferred from one preventive program to another. 2) Percentage change is August 2013 vs. August 2014.

Children's Center Population by Age

August 2013 – August 2014

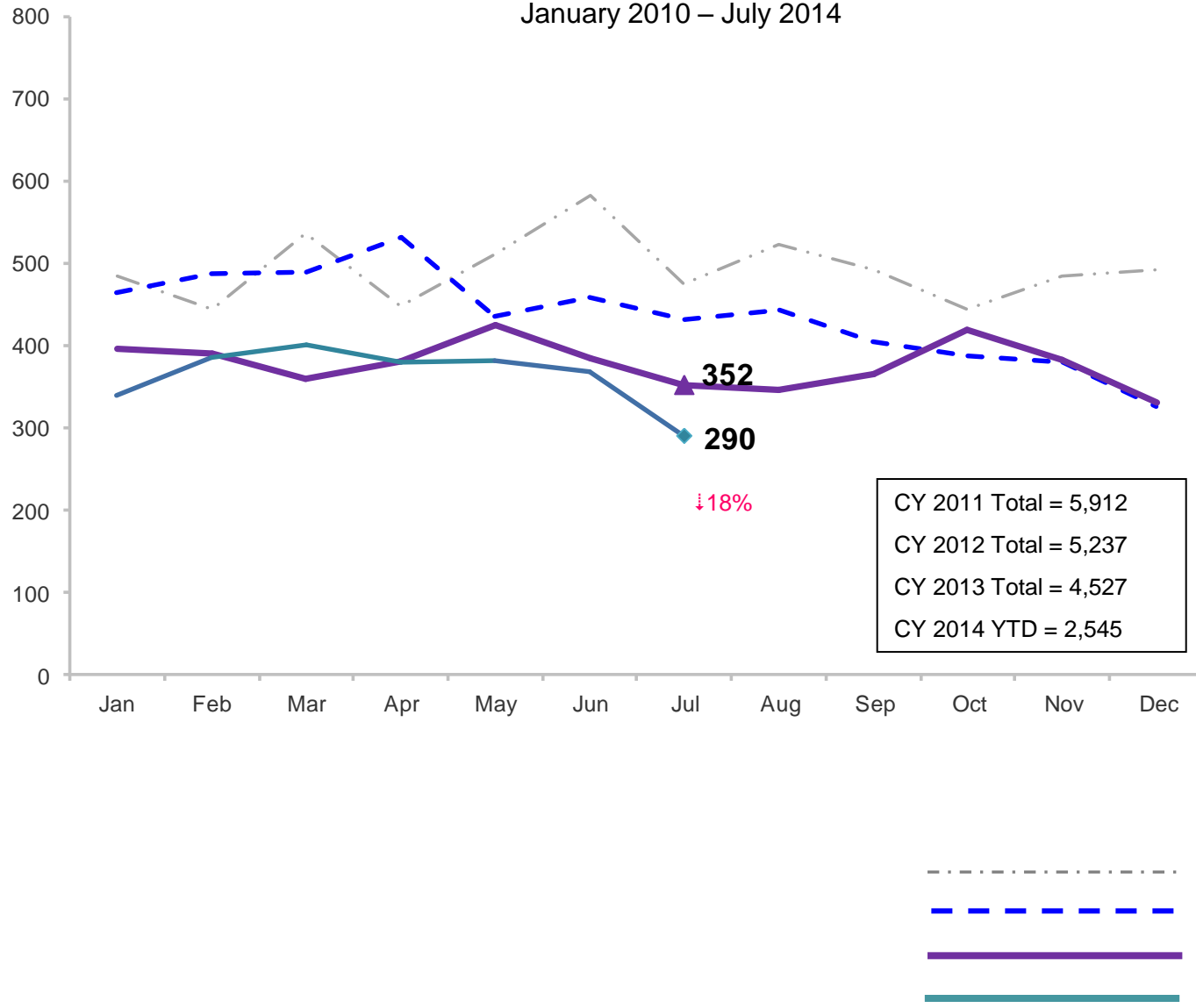


	Aug 2013	Sep 2013	Oct 2013	Nov 2013	Dec 2013	Jan 2014	Feb 2014	Mar 2014	Apr 2014	May 2014	Jun 2014	Jul 2014	Aug 2014
Number of Children	23	25	34	28	38	24	39	23	36	47	40	36	22

Note: Percentage change is August 2013 vs. August 2014.

Total Monthly Placements

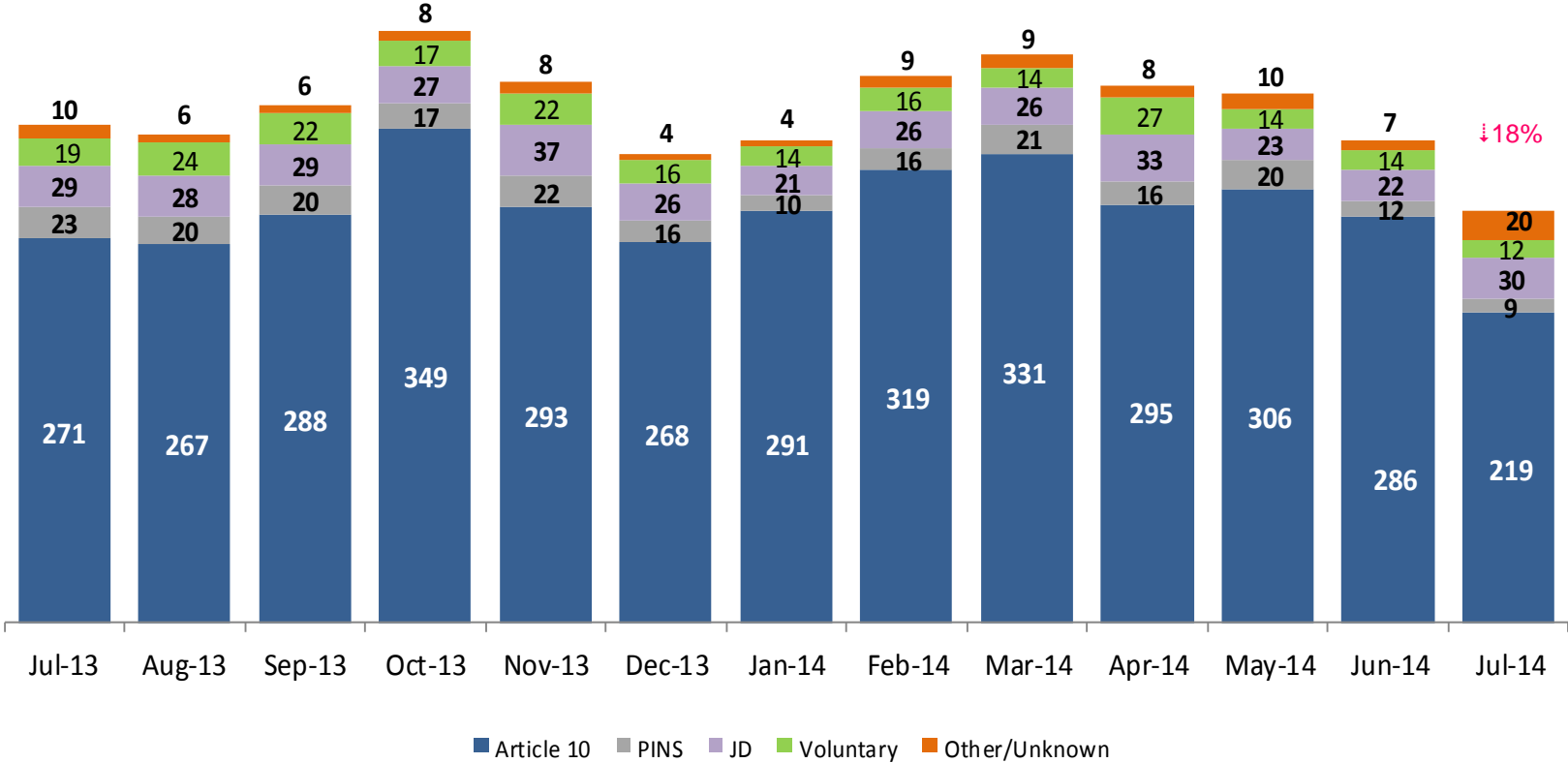
January 2010 – July 2014



Note: Percentage change is July 2013 vs. July 2014.

Reason for Initial Placements into Foster Care

July 2013 – July 2014

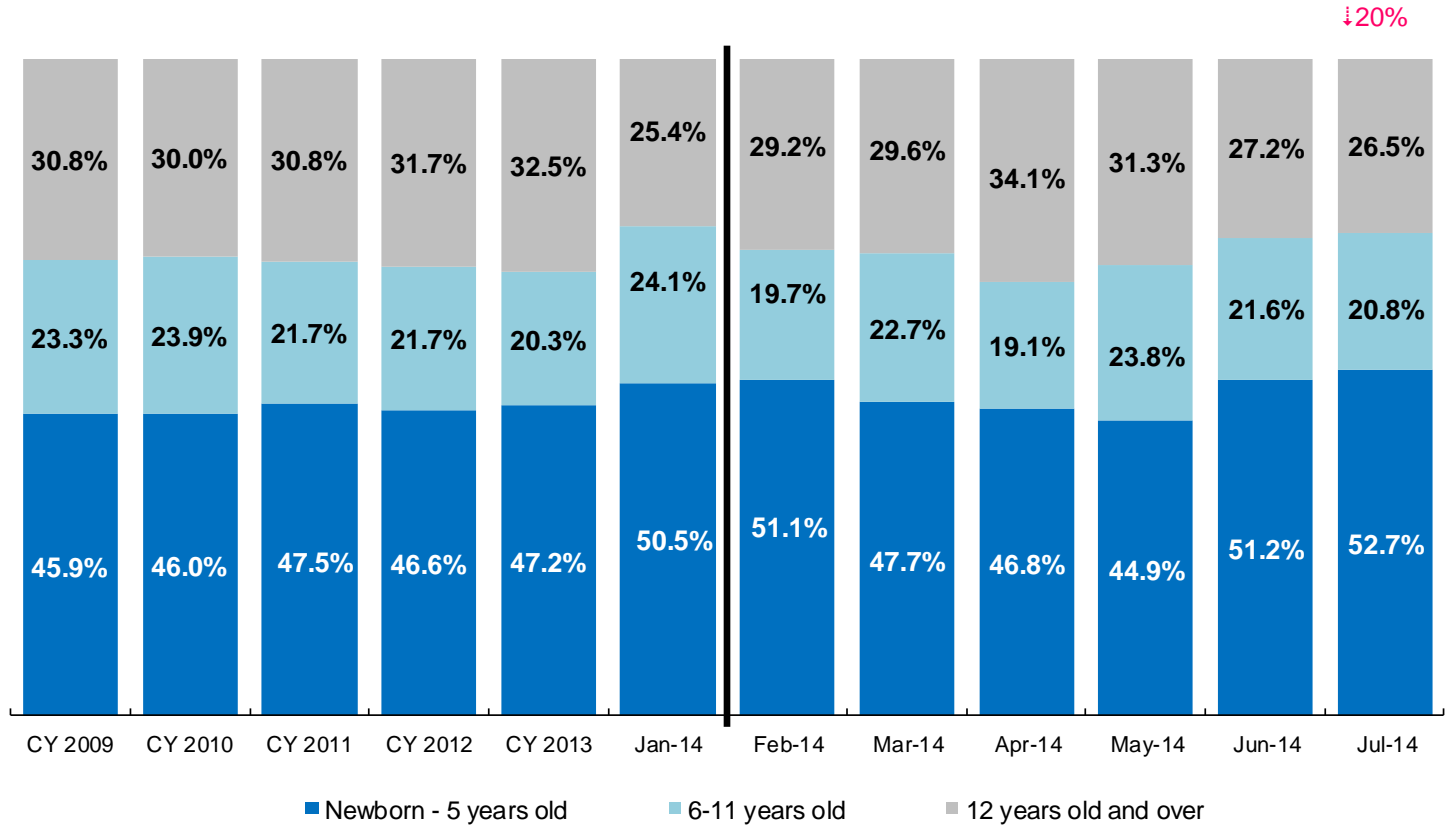


	Jul 2013	Aug 2013	Sep 2013	Oct 2013	Nov 2013	Dec 2013	Jan 2014	Feb 2014	Mar 2014	April 2014	May 2014	Jun 2014	Jul 2014
Number of Placements	352	345	365	418	382	330	340	386	401	379	382	367	290

Note: Percentage change is July 2013 vs. July 2014.

Placements* by Age

CY 2009 – CY 2013 and January – July 2014



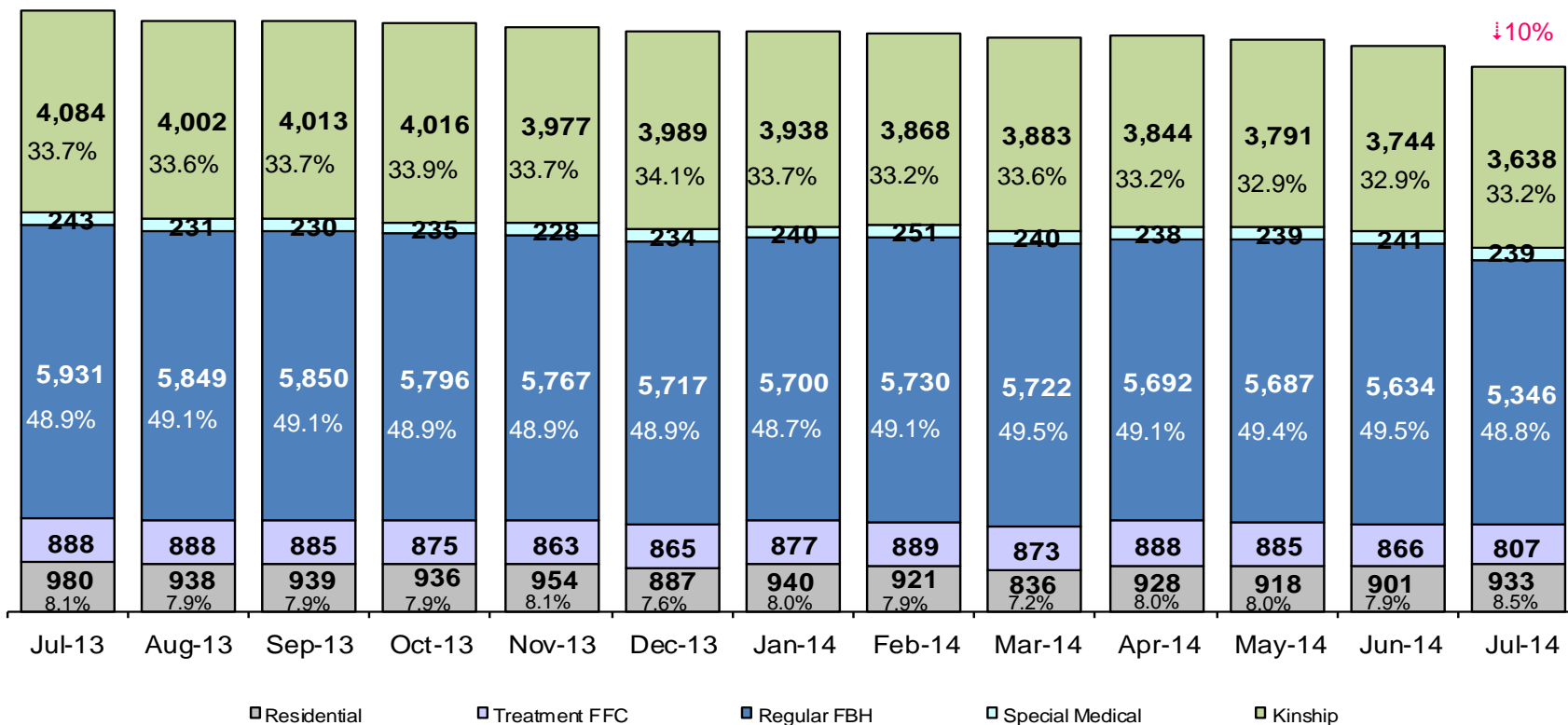
	CY 2008	CY 2009	CY 2010	CY 2011	CY 2012	CY 2013	Jan 2014	Feb 2014	Mar 2014	Apr 2014	May 2014	Jun 2014	Jul 2014
Placements	4,764	5,657	5,842	4,941	4,823	4,170	319	360	375	346	361	342	260

↓20%

*Excludes JD placements.

Note: Percentage change is July 2013 vs. July 2014.

Children in Foster Care* July 2013 – July 2014 (end of month)

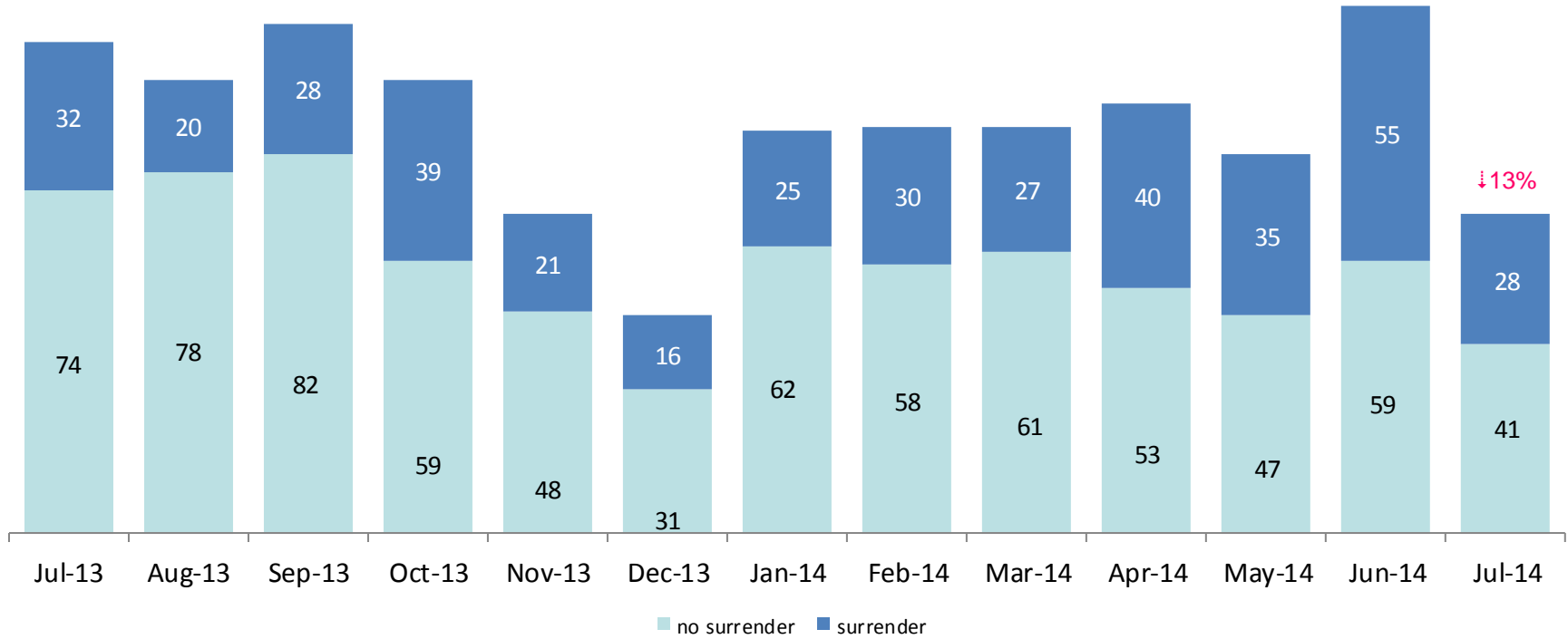


	Jul 2013	Aug 2013	Sep 2013	Oct 2013	Nov 2013	Dec 2013	Jan 2014	Feb 2014	Mar 2014	Apr 2014	May 2014	Jun 2014	Jul 2014
Number in Foster Care	12,126	11,908	11,917	11,858	11,789	11,692	11,695	11,659	11,554	11,590	11,520	11,386	10,963

*Excludes JD placements and includes approximately 400 young children who are living in foster homes or residential care facilities with their mothers who are in foster care (8D children).

Note: Percentage change is July 2013 vs. July 2014.

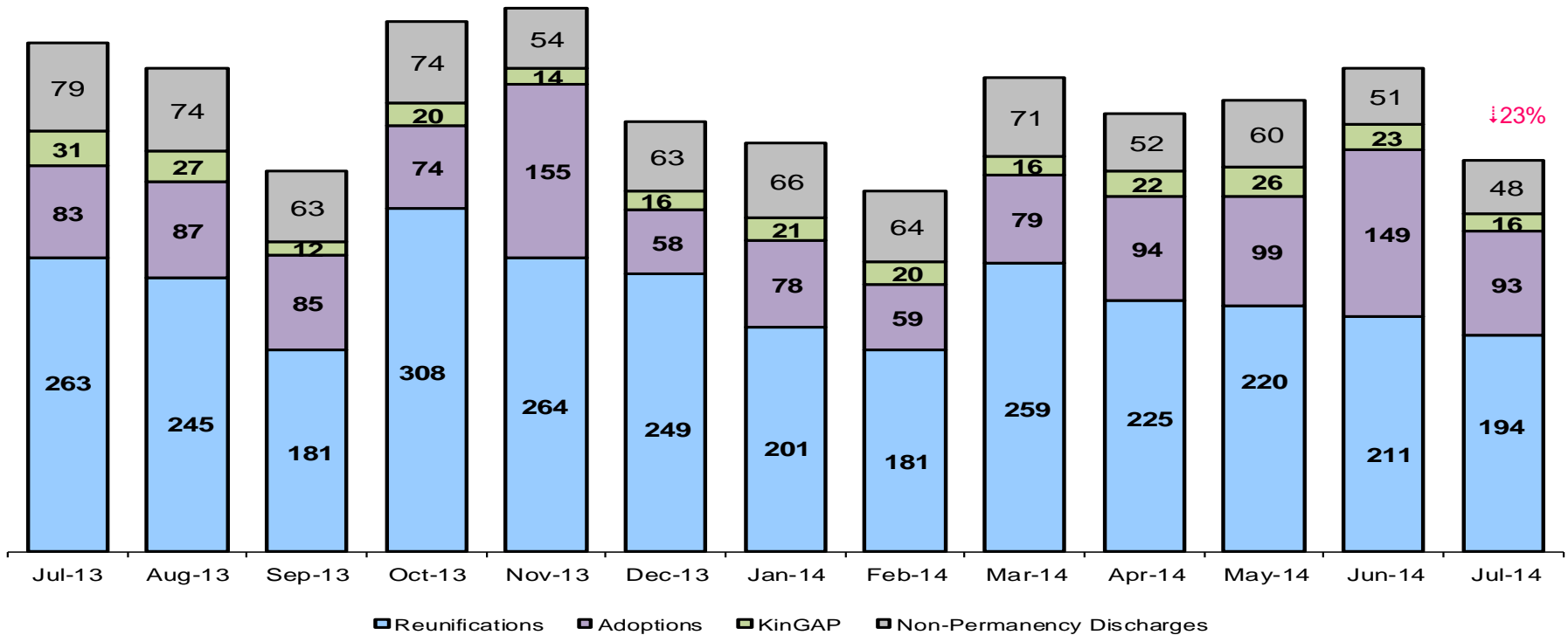
Children Freed for Adoption, Surrender by at Least One Parent July 2013 – July 2014



	Jul 2013	Aug 2013	Sep 2013	Oct 2013	Nov 2013	Dec 2013	Jan 2014	Feb 2014	Mar 2014	Apr 2014	May 2014	Jun 2014	Jul 2014
Number Freed for Adoption	106	98	110	98	69	47	87	88	88	93	82	114	69

Note: Percentage change is for the number of children surrendered by at least on parent during July 2013 vs. July 2014.

Permanency and Non-Permanency* Discharges from Foster Care** July 2013 – July 2014



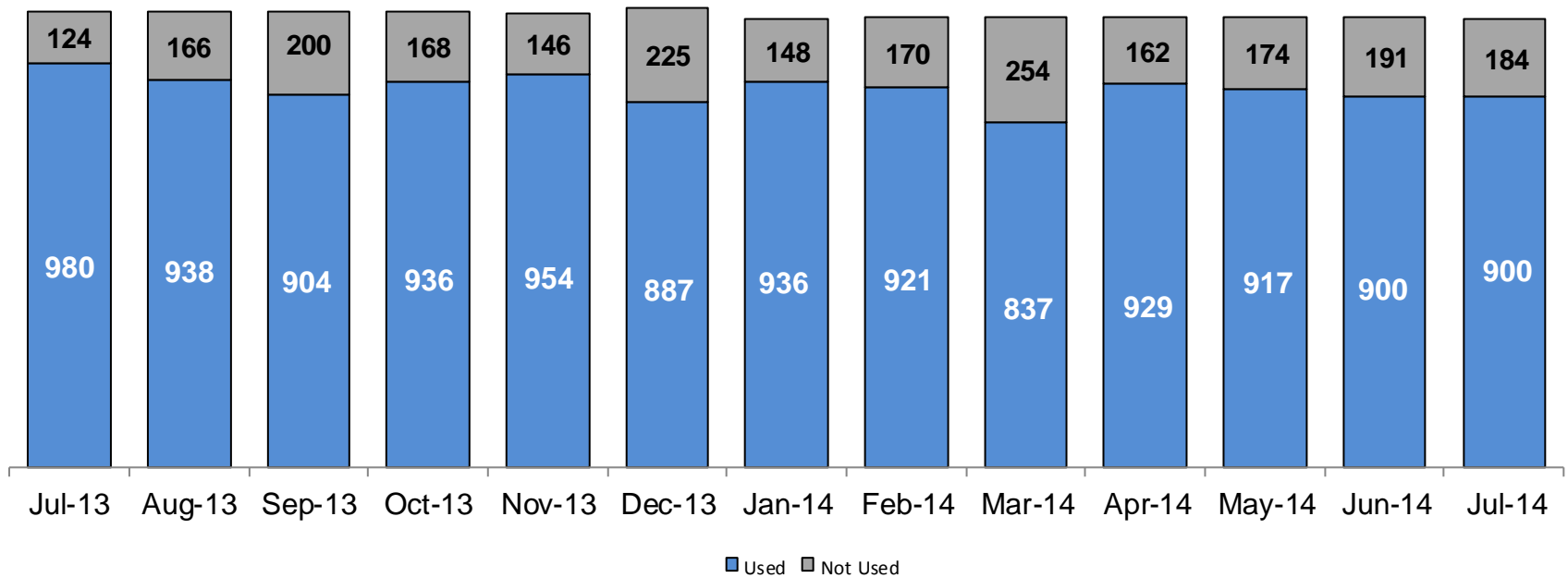
	Jul 2013	Aug 2013	Sep 2013	Oct 2013	Nov 2013	Dec 2013	Jan 2014	Feb 2014	Mar 2014	Apr 2014	May 2014	Jun 2014	Jul 2014
Number of Discharges	456	433	341	476	487	386	366	324	425	393	405	413	351

*Non-permanency discharges include AWOL, APPLA as well as other discharge destinations such as mental institutions and correctional facilities and discharges with unspecified destinations.

**Excludes discharges of youth who were in JD status at any time during their foster care spell.

Note: Percentage change is July 2013 vs. July 2014.

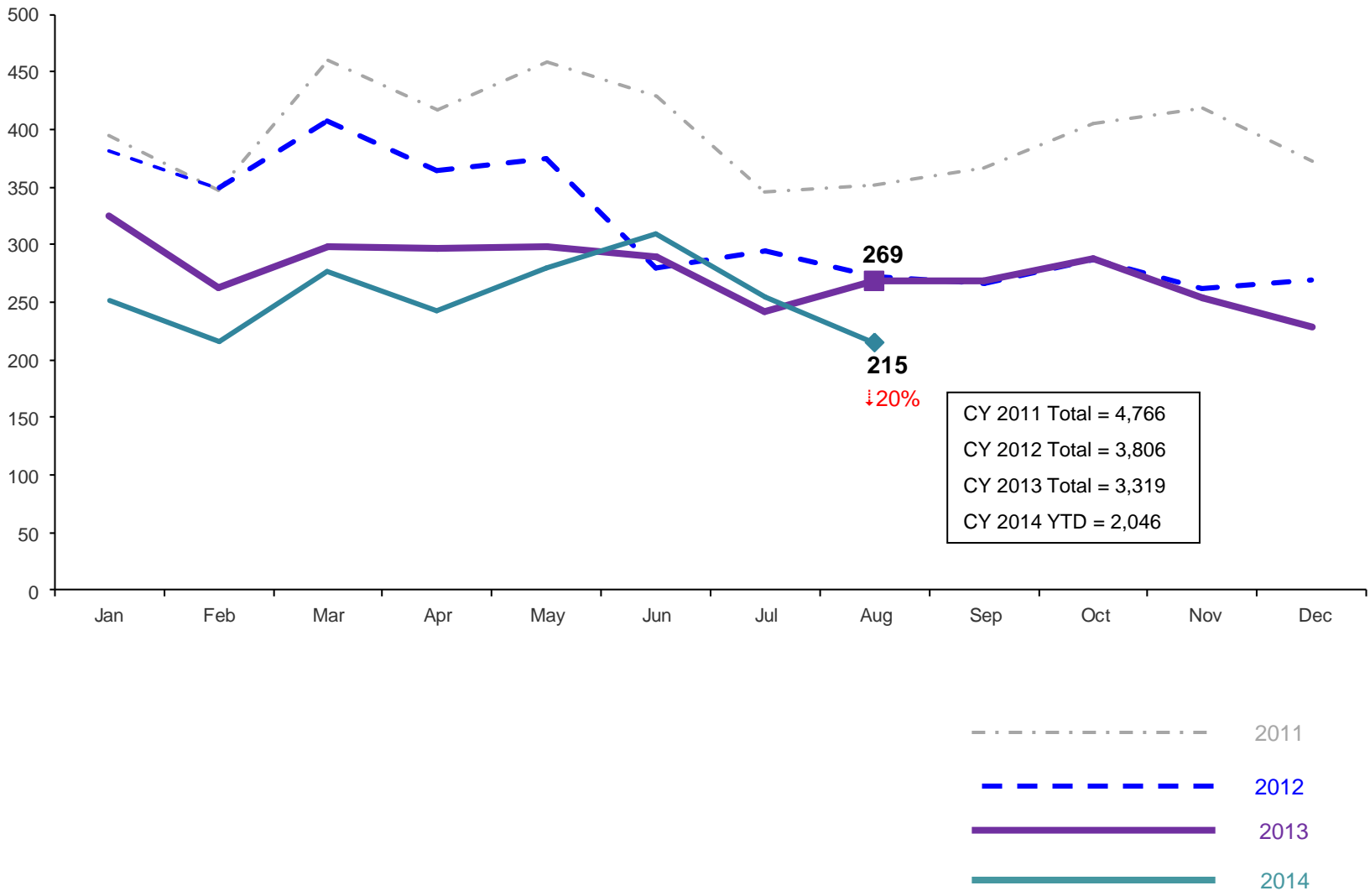
Residential Care Capacity and Utilization, July 2013 – July 2014



	Jul 2013	Aug 2013	Sep 2013	Oct 2013	Nov 2013	Dec 2013	Jan 2014	Feb 2014	Mar 2014	Apr 2014	May 2014	Jun 2014	Jul 2014
Capacity	1,104	1,104	1,104	1,104	1,100	1,112	1,084	1,091	1,091	1,091	1,091	1,091	1,084

Total Monthly Admissions to Detention

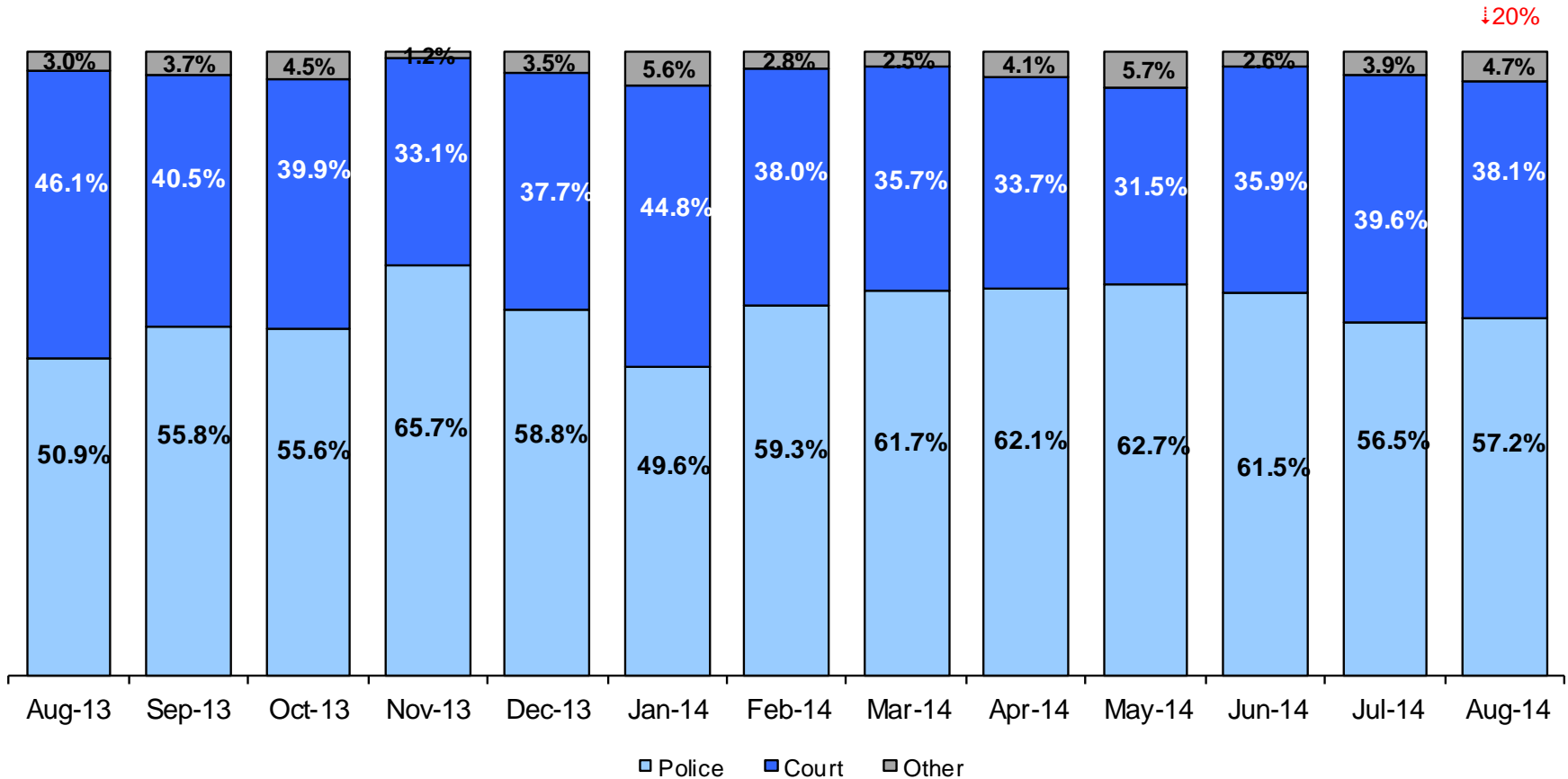
January 2011 – August 2014 (Monthly Total)



Note: Percentage change is August 2013 vs. August 2014.

Admit Authority on Admissions

August 2013 - August 2014 (Monthly Total)



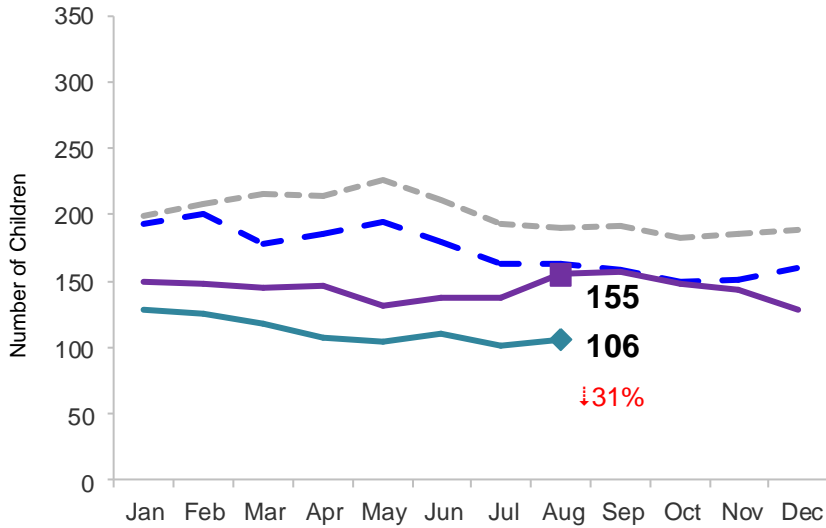
	Aug 2013	Sep 2013	Oct 2013	Nov 2013	Dec 2013	Jan 2014	Feb 2014	Mar 2014	Apr 2014	May 2014	Jun 2014	Jul 2014	Aug 2014
Number of Admissions	269	269	288	254	228	252	216	277	243	279	309	255	215

Notes: 1) Other Admit Authority includes the Sheriff Department, Department of Corrections and ACS. 2) Percentage change is August 2013 vs. August 2014.

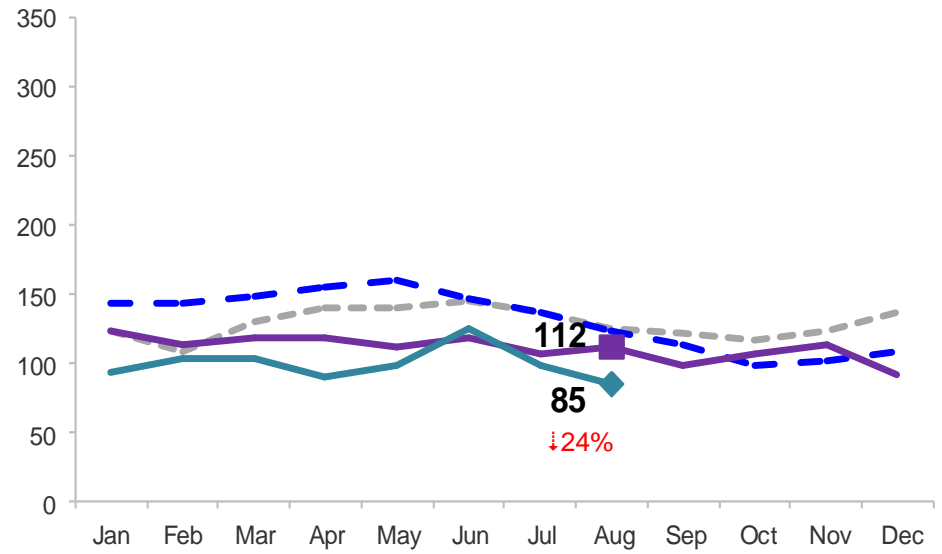
Monthly Average Daily Population

January 2011 – August 2014

Secure Detention



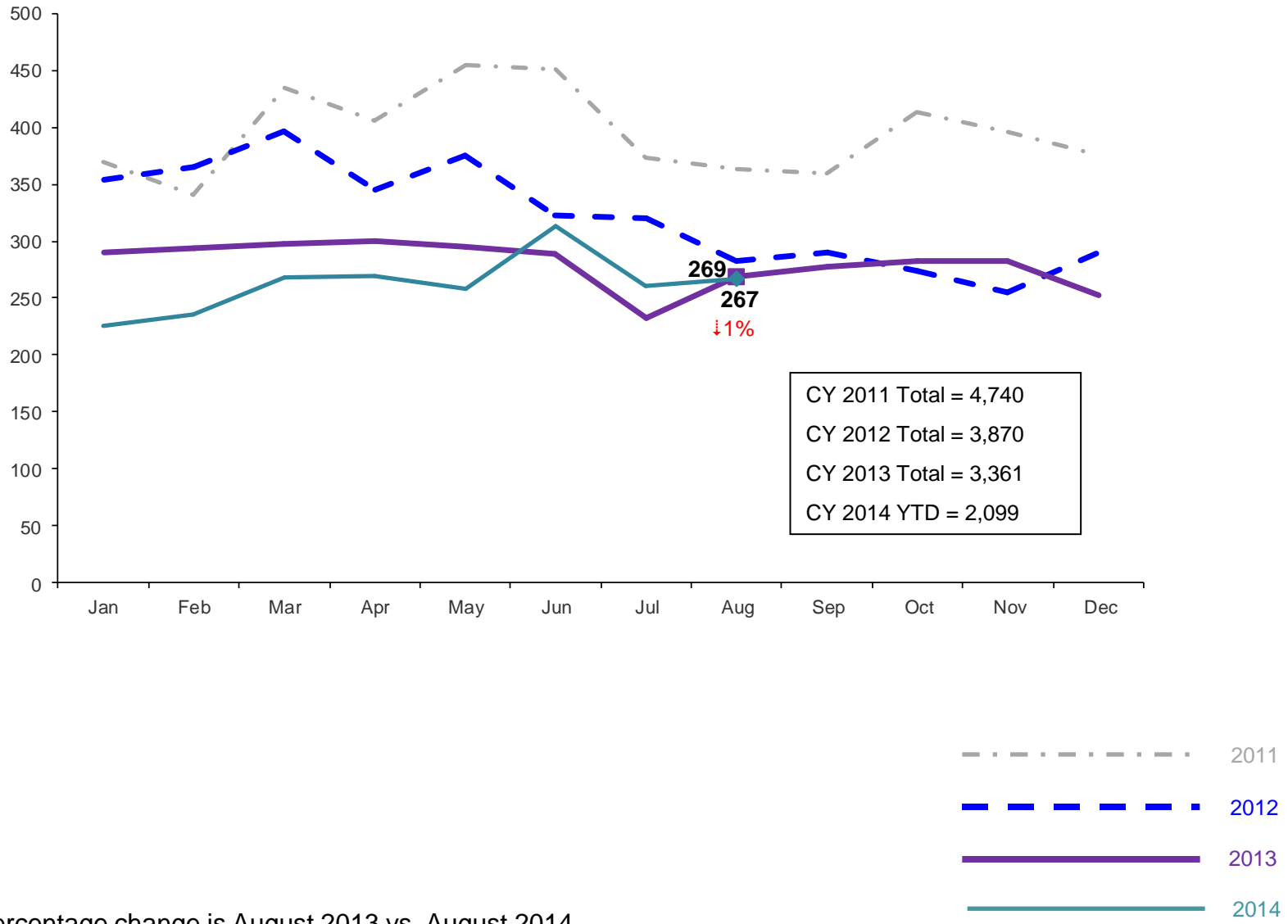
Non-Secure Detention



Note: Percentage change is August 2013 vs. August 2014.

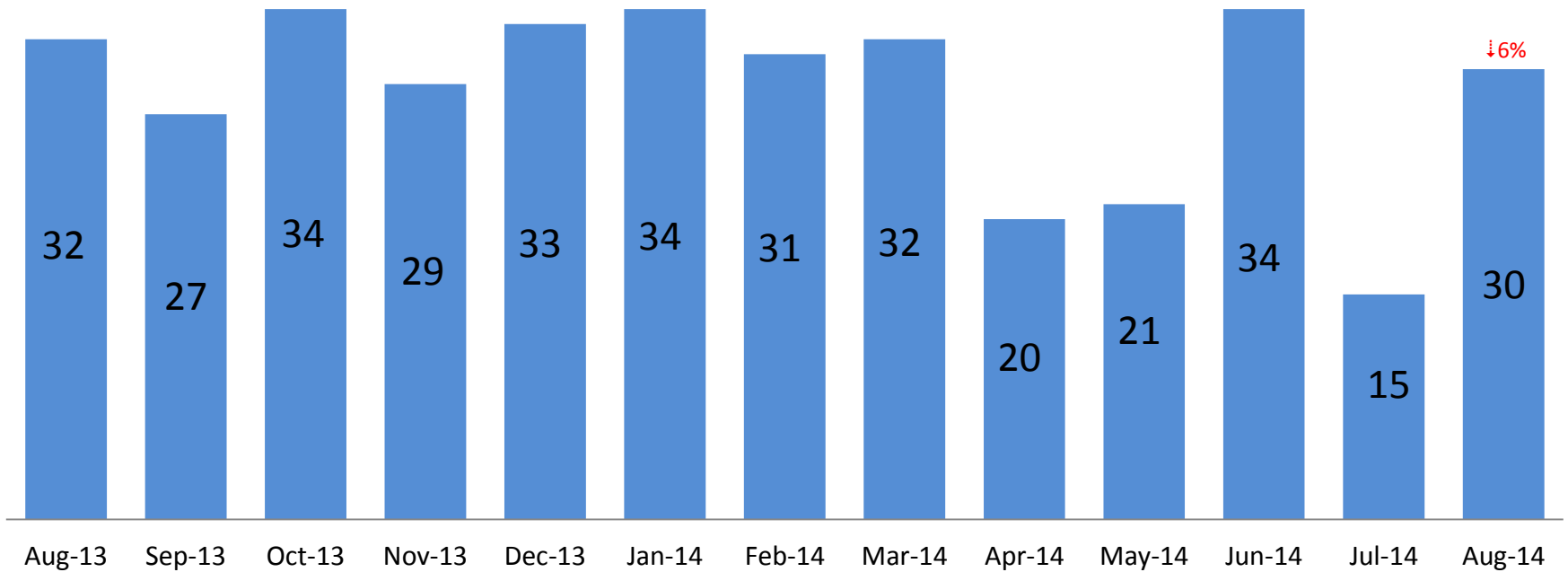
Total Monthly Releases from Detention

January 2011 – August 2014 (Monthly Total)



Note: Percentage change is August 2013 vs. August 2014.

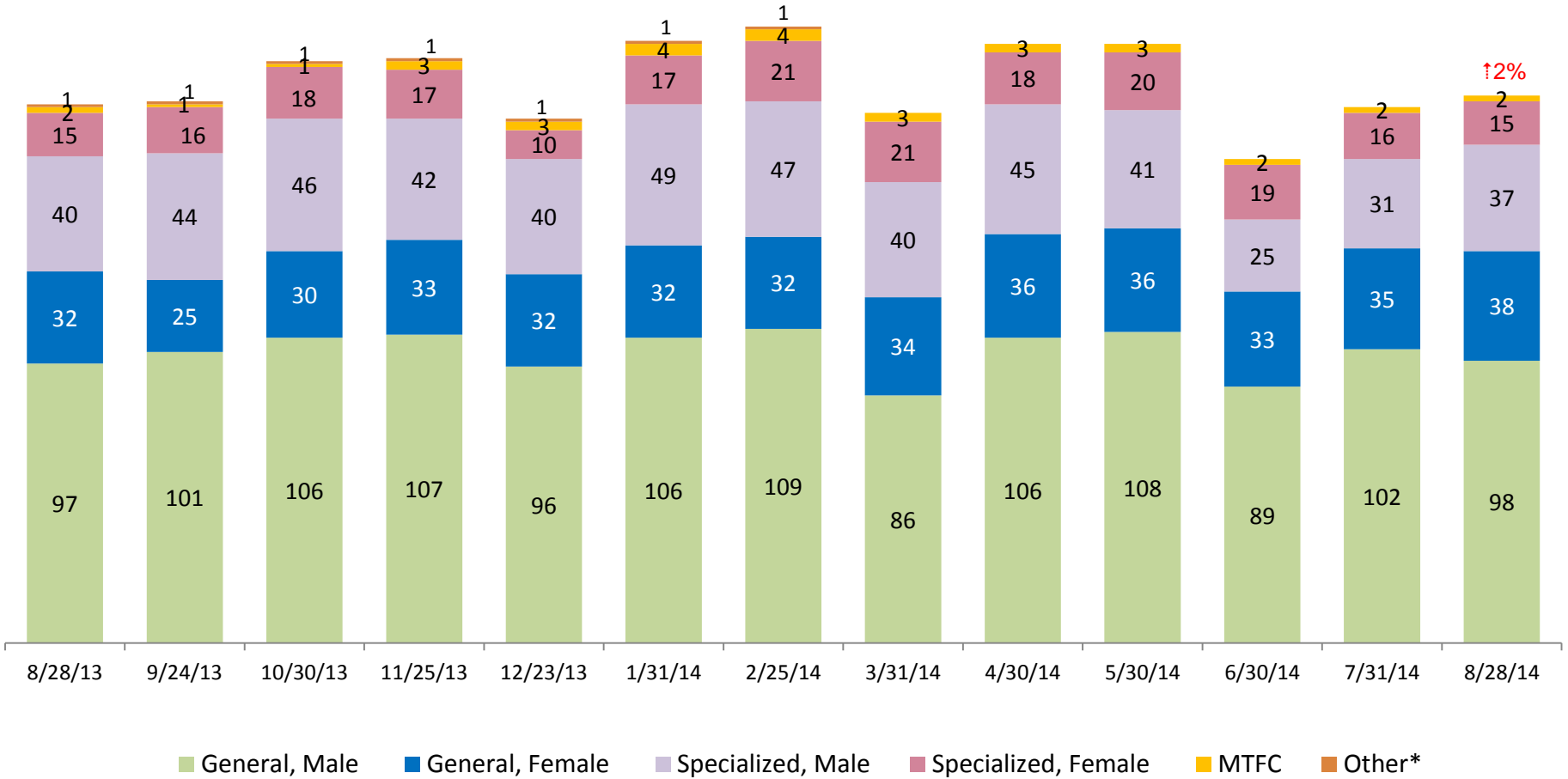
ACS NSP Intakes August 2013 – August 2014



Note: Percentage change is August 2013 vs. August 2014.

ACS Non-Secure Placement, in 24 hour Care

August 2013 – August 2014 (Point-in-Time)

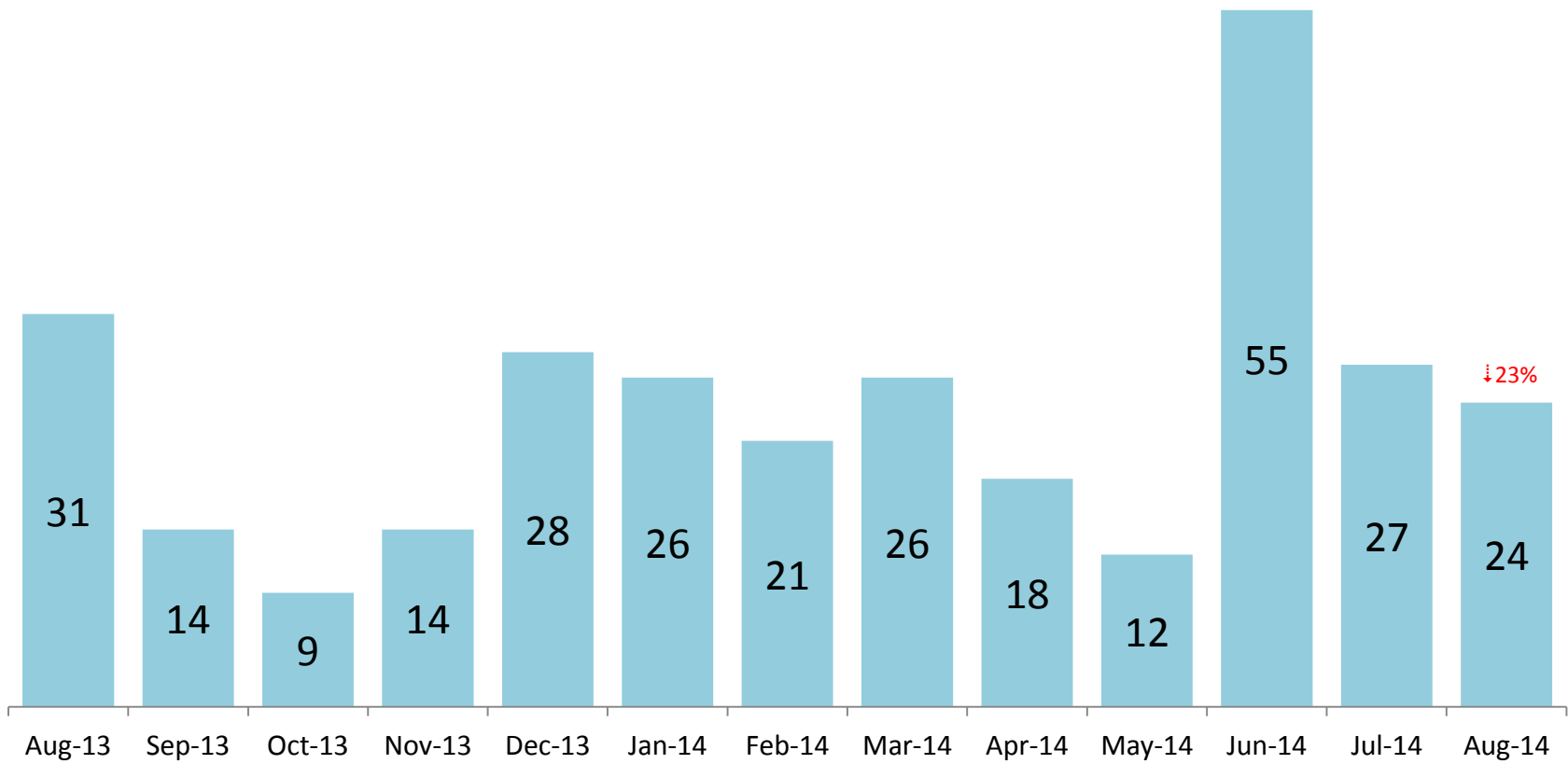


	8/28/13	9/24/13	10/30/13	11/25/13	12/23/13	1/31/14	2/25/14	3/31/14	4/30/14	5/30/14	6/30/14	7/31/14	8/28/14
Number in Placement	187	188	202	203	182	209	214	184	208	208	168	186	190

*Other includes NYC youth in voluntary placements with Lincoln Hall, MercyFirst and Graham Windham.

Note: Percentage change is August 2013 vs. August 2014.

Releases from NSP to Aftercare August 2013 – August 2014



Note: Percentage change is August 2013 vs. August 2014.

Appendix

Figure 1: SCR Intakes by Borough, JUN 13 – AUG 13 and JUN 14 – AUG 14

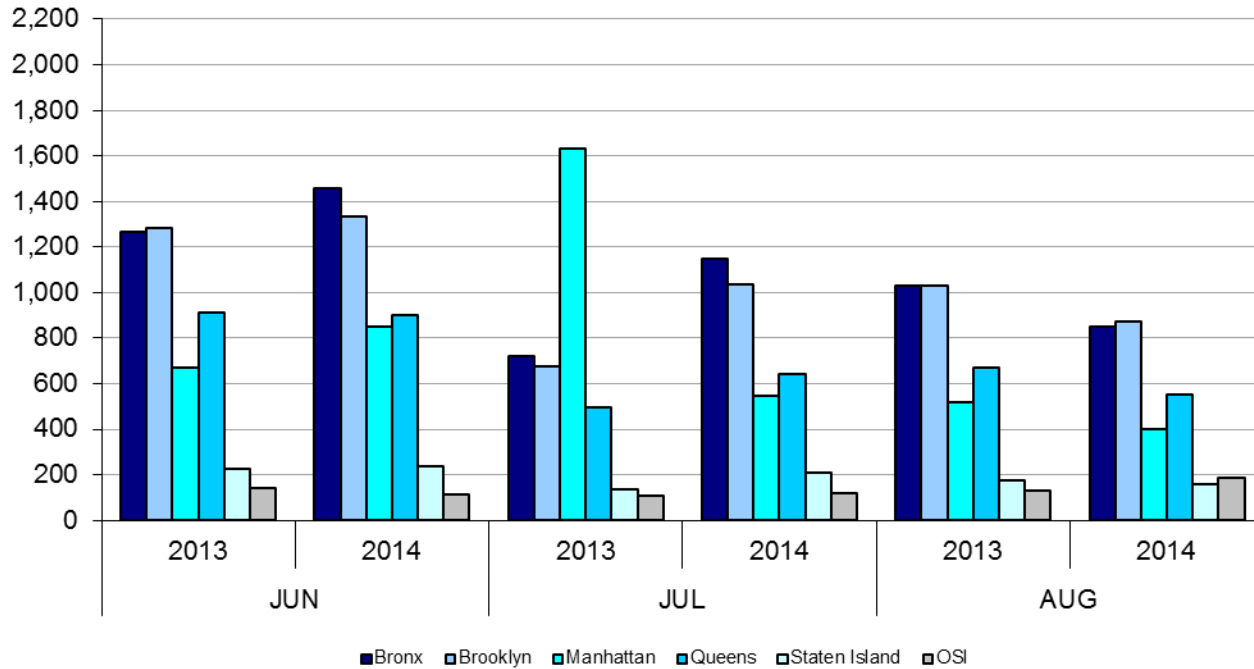


TABLE 1 - SCR Intake Changes by Borough, JUN 13 – AUG 13 and JUN 14 – AUG 14

Month	Year	Bronx	Brooklyn	Manhattan	Queens	Staten Island	OSI	Other	Total
JUN	2013	1,268	1,284	669	910	223	142	139	4,635
	2014	1,457	1,333	848	900	239	112	151	5,040
	% Change	14.9%	3.8%	26.8%	-1.1%	7.2%	-21.1%	8.6%	8.7%
JUL	2013	722	678	1,632	493	134	106	128	3,893
	2014	1,148	1,034	546	641	209	121	124	3,823
	% Change	59.0%	52.5%	-66.5%	30.0%	56.0%	14.2%	-3.1%	-1.8%
AUG	2013	1,028	1,032	516	669	177	132	133	3,687
	2014	852	873	398	552	158	185	91	3,109
	% Change	-17.1%	-15.4%	-22.9%	-17.5%	-10.7%	40.2%	-31.6%	-15.7%
Total	2013	3,018	2,994	2,817	2,072	534	380	400	12,215
	2014	3,457	3,240	1,792	2,093	606	418	366	11,972
	% Change	14.5%	8.2%	-36.4%	1.0%	13.5%	10.0%	-8.5%	-2.0%

Figure 2: Citywide SCR Intakes by Reporter Group, JUN 13 – AUG 13 and JUN 14 – AUG 14

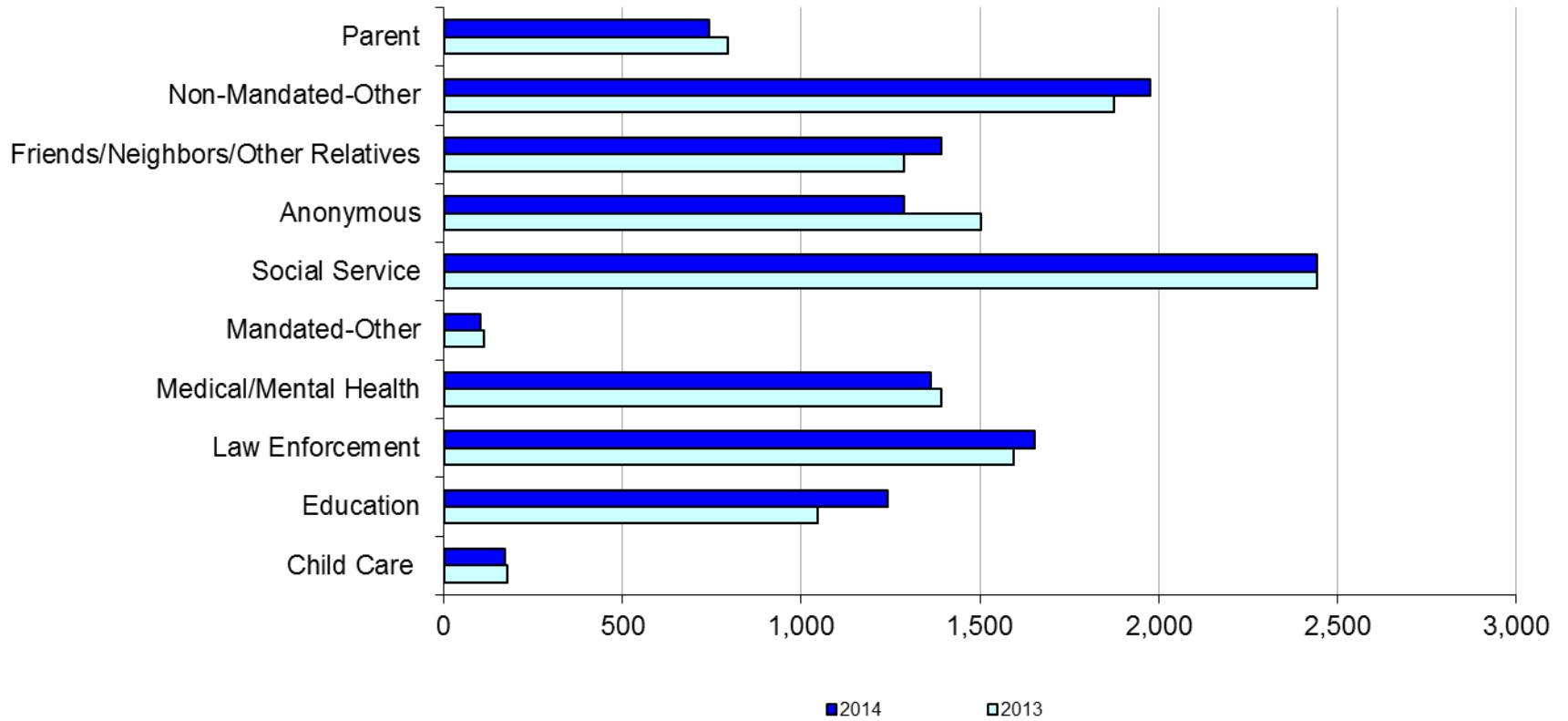
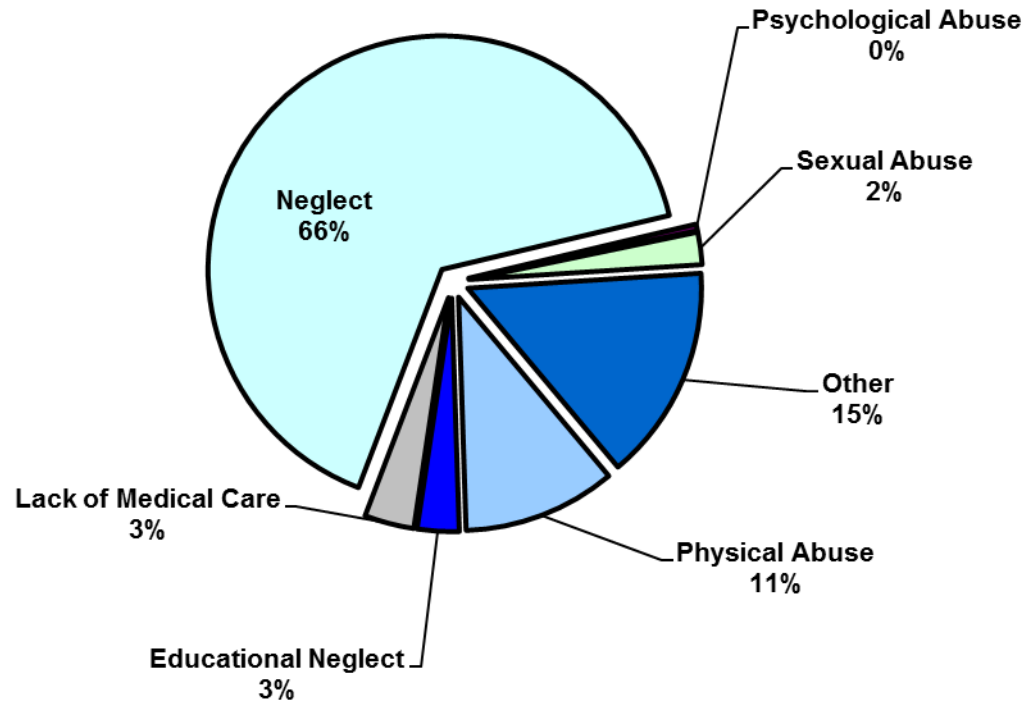


TABLE 2 - SCR Intakes by Reporter Group, JUN 13 – AUG 13 and JUN 14 – AUG 14

Year	Child Care/ Substitute Care Personnel	Educational Personnel	Law Enforcement	Medical/ Mental Health Personnel	Mandated- Other	Social Service Personnel	Anonymous	Friends/ Neighbors/ Other Relatives	Non- Mandated- Other	Parent	Foster Parent	Total
Bronx												
2013	45	310	399	364	34	707	391	385	559	207	2	3,403
2014	44	396	370	423	30	726	375	412	618	185	1	3,580
% Change	-2.2%	27.7%	-7.3%	16.2%	-11.8%	2.7%	-4.1%	7.0%	10.6%	-10.6%	-50.0%	5.2%
Brooklyn												
2013	51	310	415	403	30	593	456	379	535	194	0	3,366
2014	34	322	479	358	20	629	374	377	583	201	1	3,378
% Change	-33.3%	3.9%	15.4%	-11.2%	-33.3%	6.1%	-18.0%	-0.5%	9.0%	3.6%	--	0.4%
Manhattan												
2013	25	101	281	216	22	342	213	151	314	79	0	1,744
2014	32	180	331	220	19	386	151	181	287	81	1	1,869
% Change	28.0%	78.2%	17.8%	1.9%	-13.6%	12.9%	-29.1%	19.9%	-8.6%	2.5%	--	7.2%
Queens												
2013	30	230	322	262	15	484	279	230	272	152	0	2,276
2014	24	249	296	242	18	433	225	260	296	127	0	2,170
% Change	-20.0%	8.3%	-8.1%	-7.6%	20.0%	-10.5%	-19.4%	13.0%	8.8%	-16.4%	--	-4.7%
Staten Island												
2013	9	64	64	68	4	99	113	71	61	46	0	599
2014	7	68	72	42	6	96	114	103	77	39	1	625
% Change	-22.2%	6.3%	12.5%	-38.2%	50.0%	-3.0%	0.9%	45.1%	26.2%	-15.2%	--	4.3%
OSI												
2013	14	16	29	48	7	83	32	35	92	66	2	424
2014	26	11	21	40	7	60	29	23	78	72	0	367
% Change	85.7%	-31.3%	-27.6%	-16.7%	0.0%	-27.7%	-9.4%	-34.3%	-15.2%	9.1%	--	-13.4%
Other												
2013	5	16	85	31	0	135	18	37	42	51	0	420
2014	5	16	85	36	2	112	18	37	36	38	0	385
% Change	0.0%	0.0%	0.0%	16.1%	--	-17.0%	0.0%	0.0%	-14.3%	-25.5%	--	-8.3%
Citywide												
2013	179	1,047	1,595	1,392	112	2,443	1,502	1,288	1,875	795	4	12,232
2014	172	1,242	1,654	1,361	102	2,442	1,286	1,393	1,975	743	4	12,374
% Change	-3.9%	18.6%	3.7%	-2.2%	-8.9%	0.0%	-14.4%	8.2%	5.3%	-6.5%	0.0%	1.2%

Figure 3: SCR Allegations, JUN 14 – AUG 14



Total Allegations = 33,117

TABLE 3 - SCR Allegations, JUN 13 - AUG 13 and JUN 14 - AUG 14

Year	Physical Abuse	Educational Neglect	Lack of Medical Care	Neglect	Psychological Abuse	Sexual Abuse	Other	Total
Bronx								
2013	944	280	350	6,038	50	183	1,527	9,372
2014	1,062	372	382	6,514	36	206	1,492	10,064
% Change	12.5%	32.9%	9.1%	7.9%	-28.0%	12.6%	-2.3%	7.4%
Brooklyn								
2013	1,050	248	337	6,072	44	212	1,586	9,549
2014	912	264	305	6,191	31	233	1,380	9,316
% Change	-13.1%	6.5%	-9.5%	2.0%	-29.5%	9.9%	-13.0%	-2.4%
Manhattan								
2013	403	93	162	2406	29	116	631	3,840
2014	391	125	144	2436	26	85	500	3,707
% Change	-3.0%	34.4%	-11.1%	1.2%	-10.3%	-26.7%	-20.8%	-3.5%
Queens								
2013	679	123	178	3,733	53	132	1,043	5,941
2014	626	124	184	3,556	34	117	819	5,460
% Change	-7.8%	0.8%	3.4%	-4.7%	-35.8%	-11.4%	-21.5%	-8.1%
Staten Island								
2013	169	38	33	1,141	11	30	324	1,746
2014	160	45	37	1,329	12	35	405	2,023
% Change	-5.3%	18.4%	12.1%	16.5%	9.1%	16.7%	25.0%	15.9%
OSI								
2013	256	18	43	1,202	7	67	149	1,742
2014	244	16	51	1,133	8	43	151	1,646
% Change	-4.7%	-11.1%	18.6%	-5.7%	14.3%	-35.8%	1.3%	-5.5%
Other								
2013	116	17	32	652	7	28	272	1,124
2014	113	13	34	523	4	23	191	901
% Change	-2.6%	-23.5%	6.3%	-19.8%	-42.9%	-17.9%	-29.8%	-19.8%
Citywide								
2013	3,617	817	1,135	21,244	201	768	5,532	33,314
2014	3,508	959	1,137	21,682	151	742	4,938	33,117
% Change	-3.0%	17.4%	0.2%	2.1%	-24.9%	-3.4%	-10.7%	-0.6%

**TABLE 4 - Purchased Preventive Cases
Opened and Closed
January 2012 to August 2014**

Month	Opened Cases	Closed Cases
2012		
Jan-12	870	629
Feb-12	889	835
Mar-12	944	991
Apr-12	997	870
May-12	1,117	979
Jun-12	965	869
Jul-12	853	979
Aug-12	917	1,007
Sep-12	727	900
Oct-12	875	915
Nov-12	738	702
Dec-12	938	871
2013		
Jan-13	960	884
Feb-13	873	916
Mar-13	962	1,171
Apr-13	940	988
May-13	864	1,337
Jun-13	863	780
Jul-13	868	1,004
Aug-13	802	1,084
Sep-13	844	724
Oct-13	933	765
Nov-13	901	685
Dec-13	1,106	552
2014		
Jan-14	983	640
Feb-14	987	679
Mar-14	1,146	874
Apr-14	1,074	896
May-14	1,042	888
Jun-14	976	762
Jul-14	1,050	1,077
Aug-14	944	943

**Table 5 - Referrals to Purchased Preventive Services by Source
January 2012 to August 2014**

Month	Total Referrals	Division of Child Protection	Foster Care Agencies	PPRS Transfer	School	Self	Other Sources*
2012							
Jan-12	1,431	66.5%	0.7%	8.5%	3.6%	3.8%	17.0%
Feb-12	1,043	78.2%	1.1%	9.0%	1.9%	6.7%	3.1%
Mar-12	1,525	73.6%	0.9%	6.0%	1.8%	3.9%	13.8%
Apr-12	1,370	72.8%	1.0%	9.4%	1.2%	4.2%	11.4%
May-12	1,463	70.9%	1.0%	7.6%	1.1%	4.4%	15.0%
Jun-12	1,279	73.8%	0.5%	5.9%	1.0%	4.7%	14.2%
Jul-12	1,308	77.4%	1.2%	7.0%	0.3%	3.7%	10.5%
Aug-12	1,391	74.0%	0.9%	11.7%	0.3%	2.9%	10.2%
Sep-12	1,110	70.5%	1.9%	9.6%	1.2%	5.0%	11.9%
Oct-12	1,159	61.1%	1.4%	12.6%	2.7%	4.9%	17.3%
Nov-12	1,106	67.0%	1.0%	9.9%	2.2%	4.7%	15.3%
Dec-12	1,206	68.7%	0.8%	5.8%	2.7%	5.6%	16.4%
CY 2012	15,391	71.3%	1.0%	8.5%	1.6%	4.5%	13.1%
2013							
Jan-13	1,474	74.1%	1.2%	7.3%	1.2%	3.7%	12.5%
Feb-13	1,308	75.8%	1.1%	8.0%	1.6%	2.9%	10.6%
Mar-13	1,270	73.5%	1.2%	6.7%	2.4%	3.9%	12.3%
Apr-13	1,421	77.9%	0.8%	7.4%	0.9%	3.0%	10.1%
May-13	1,320	68.4%	0.5%	10.2%	1.5%	3.8%	15.5%
Jun-13	953	69.2%	1.2%	9.4%	2.6%	5.0%	12.6%
Jul-13	1,014	66.3%	1.9%	14.4%	1.6%	3.9%	11.9%
Aug-13	1,212	70.5%	0.7%	11.8%	0.7%	4.7%	11.6%
Sep-13	1,262	64.0%	2.1%	11.3%	1.7%	6.7%	14.2%
Oct-13	1,319	61.0%	1.1%	9.0%	2.9%	7.5%	18.5%
Nov-13	1,249	55.9%	1.6%	10.5%	4.6%	9.2%	18.3%
Dec-13	1,464	62.2%	1.2%	8.2%	2.3%	9.2%	17.0%
CY 2013	15,266	68.3%	1.2%	9.4%	2.0%	5.3%	13.8%
2014							
Jan-14	1,537	70.0%	1.2%	6.6%	2.3%	5.8%	14.2%
Feb-14	1,334	69.7%	0.8%	8.4%	1.7%	5.5%	13.9%
Mar-14	1,612	70.0%	1.4%	8.6%	1.6%	5.3%	13.1%
Apr-14	1,525	70.2%	0.9%	7.6%	2.1%	3.7%	15.4%
May-14	1,580	74.4%	0.7%	8.3%	1.4%	5.2%	10.0%
Jun-14	1,550	78.6%	1.2%	6.3%	1.2%	3.2%	9.4%
Jul-14	1,659	79.6%	1.5%	6.7%	0.4%	4.2%	7.6%
Aug-14	1,395	72.2%	1.6%	10.8%	0.3%	4.9%	10.3%

*Other Community Sources includes the Department of Homeless Services, Family Court, FAP, Hospitals and Medical facilities, the NYC Housing Authority, PINS/DAS, Probation, and Sponsor Agencies.