

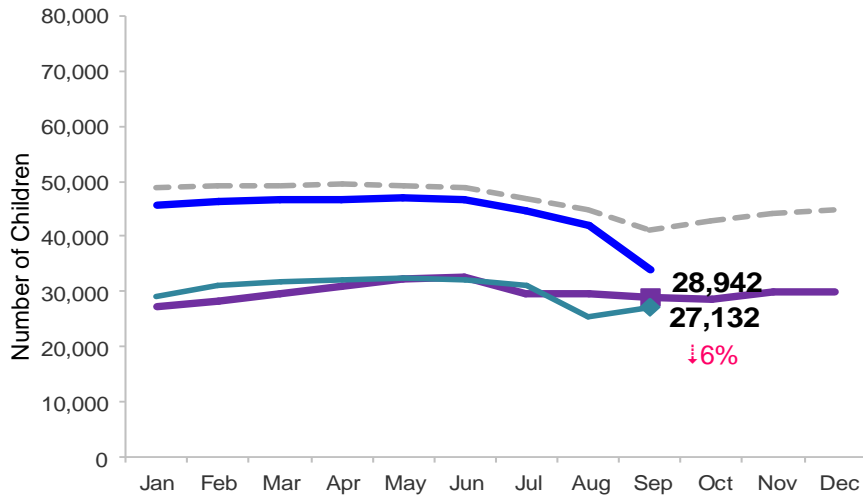


# Flash

October 2014

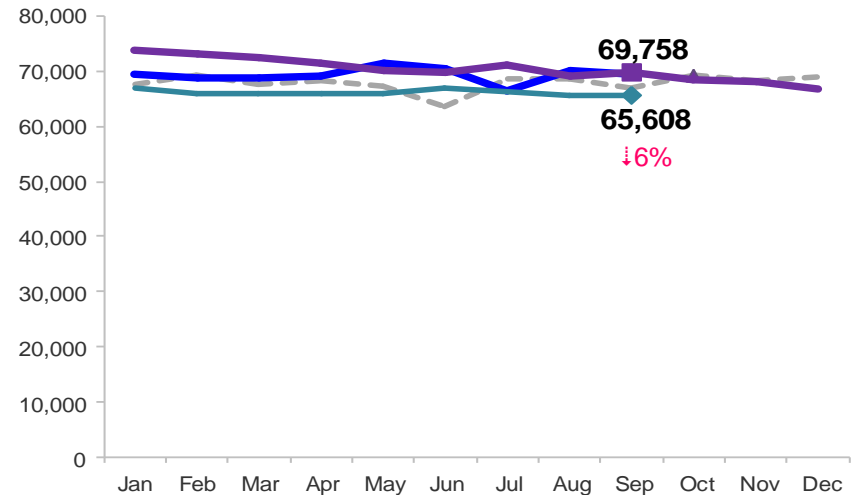
## Children Enrolled in Contracted Early Learn Programs

January 2011 – September 2014 (End of Month)



## Children Using Vouchers for Child Care

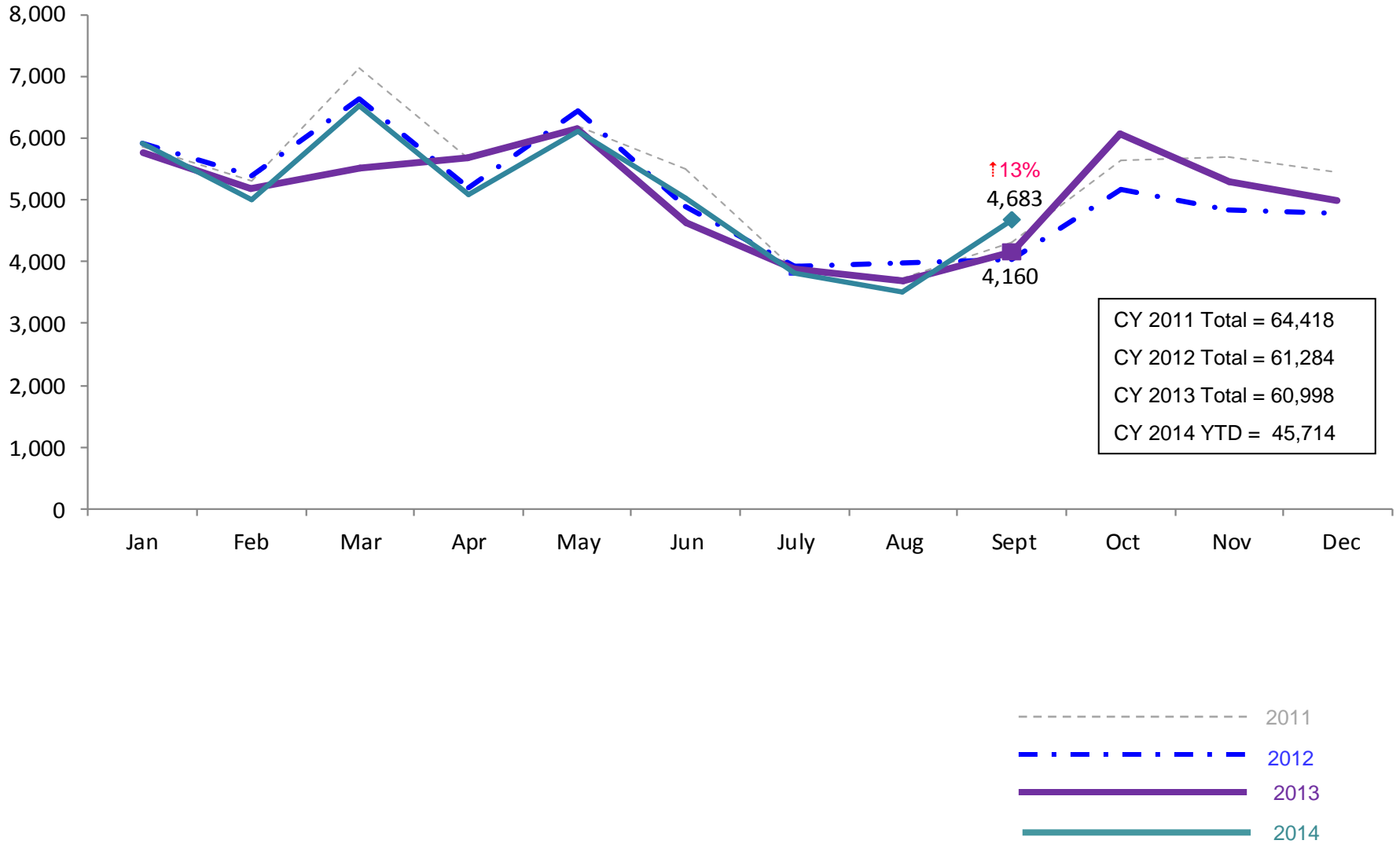
January 2011 – September 2014 (End of Month)



Notes: 1) Beginning October 1, 2012 ACS converted its early care and education system to a new model, Early Learn NYC. Enrollment data for the transitional months of October – December 2012 are not available because contractors were in the midst of implementing the data collection systems. 2) Percentage change is September 2013 vs. September 2014.

### SCR Intakes

January 2011 – September 2014 (Monthly Total)

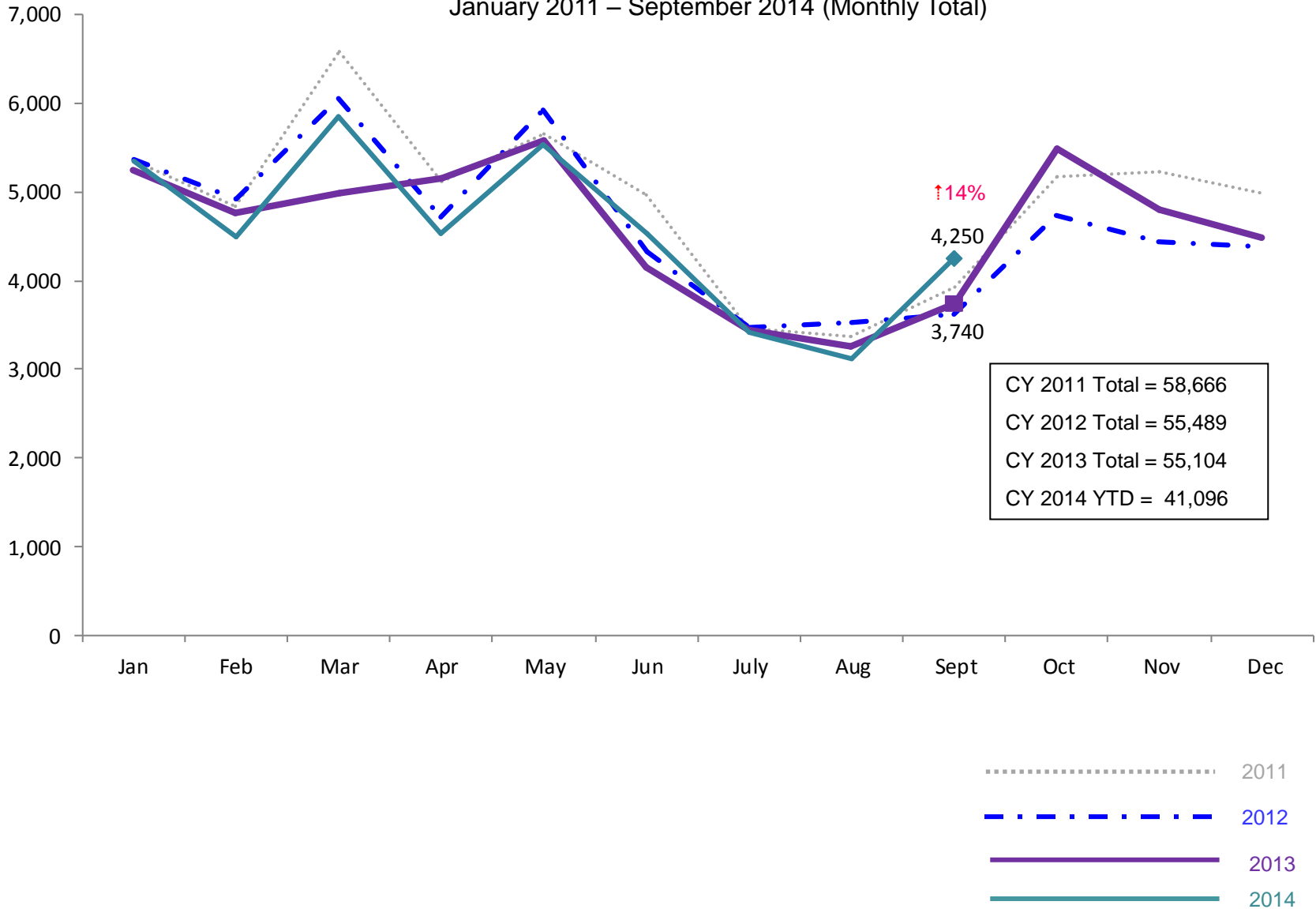


Note: Percentage change is September 2013 vs. September 2014.

See Pages 30 through 35 of the Appendix for supporting data.

### SCR Consolidated Investigations

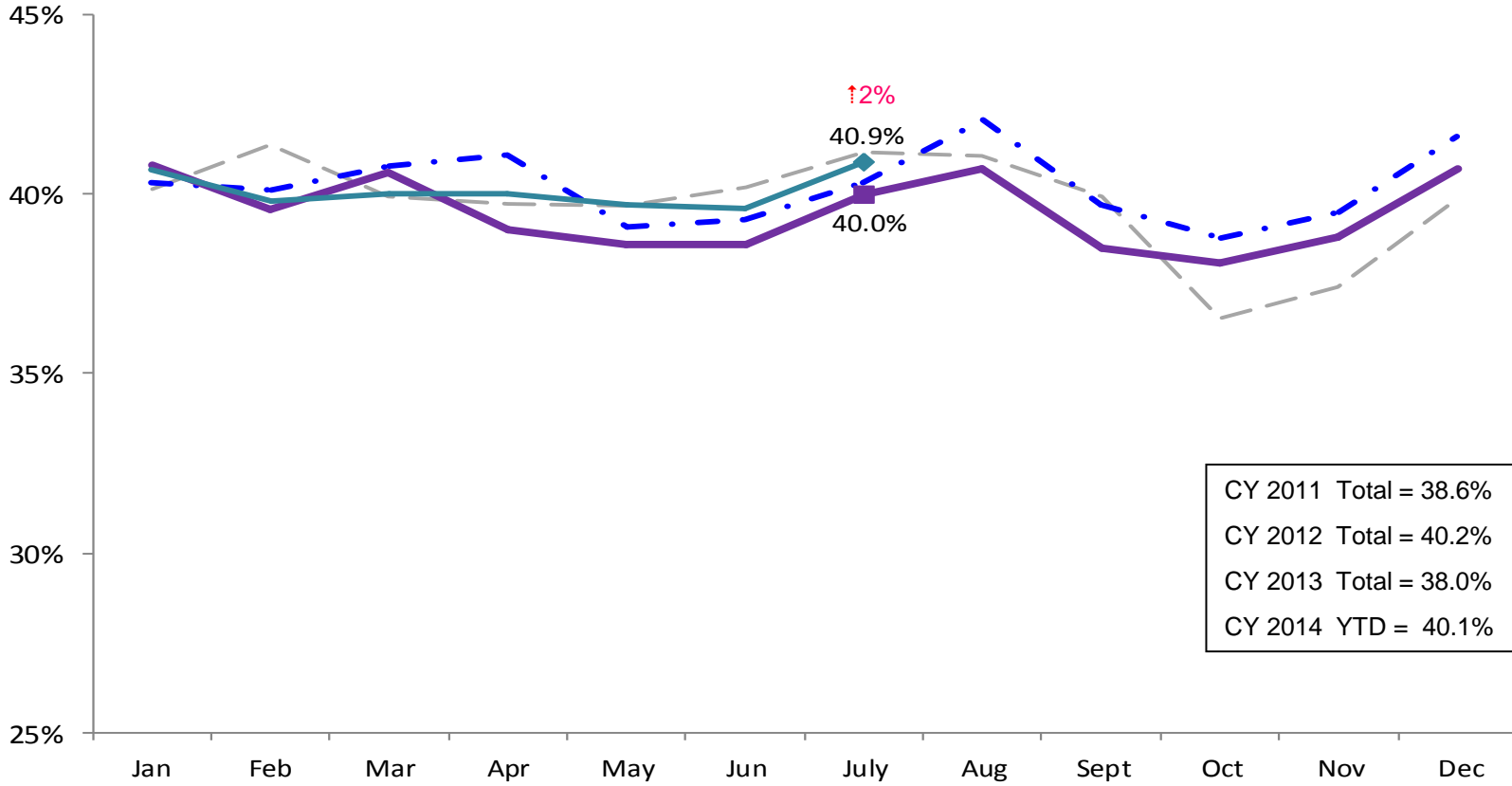
January 2011 – September 2014 (Monthly Total)



Note: Percentage change is September 2013 vs. September 2014.

### SCR Investigation Indication Rate

January 2011 – July 2014



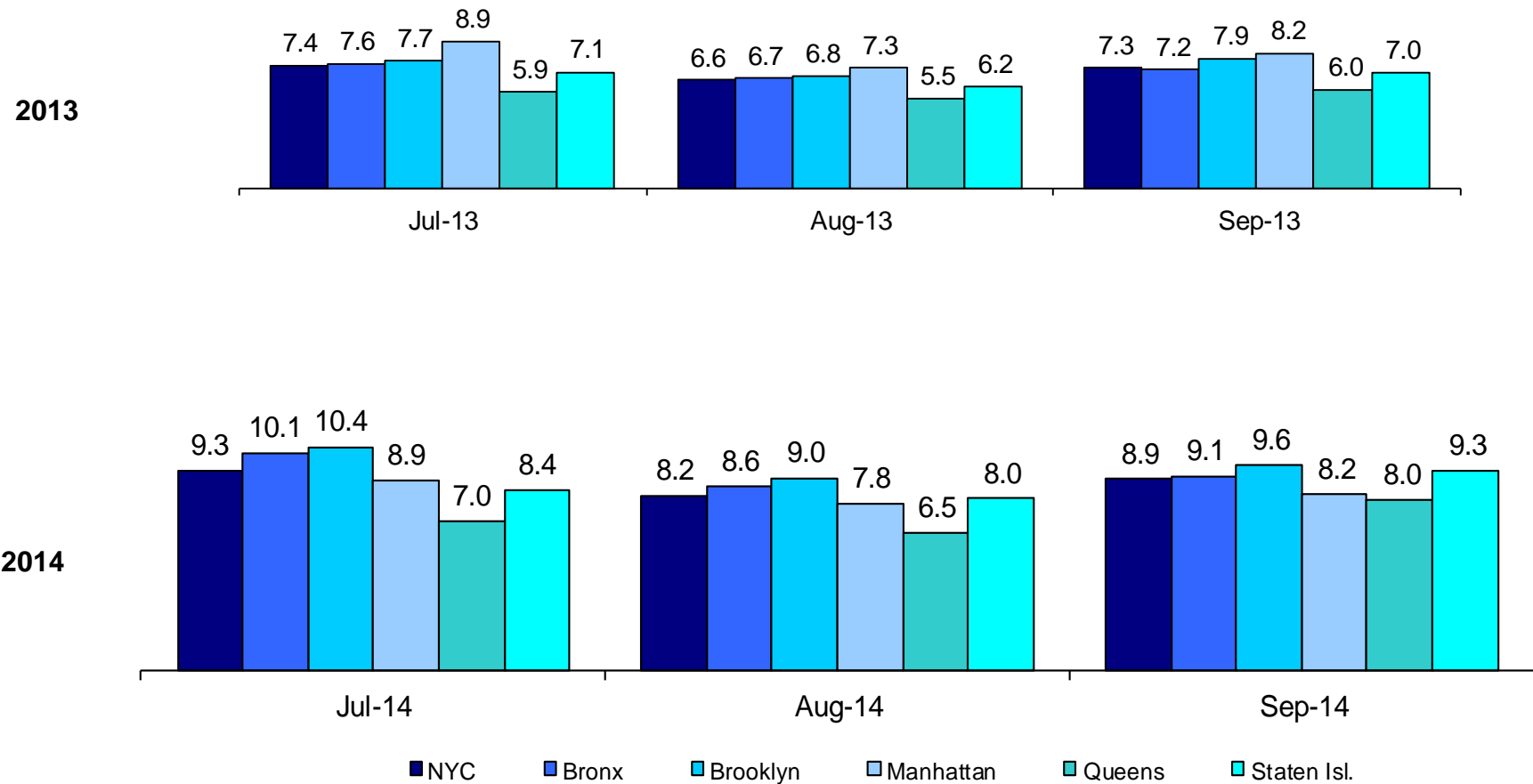
CY 2011 Total = 38.6%  
 CY 2012 Total = 40.2%  
 CY 2013 Total = 38.0%  
 CY 2014 YTD = 40.1%

----- 2011  
 - - - - - 2012  
 \_\_\_\_\_ 2013  
 \_\_\_\_\_ 2014

Note: Percentage change is July 2013 vs. July 2014.

### Average P/D Combined Caseload\*

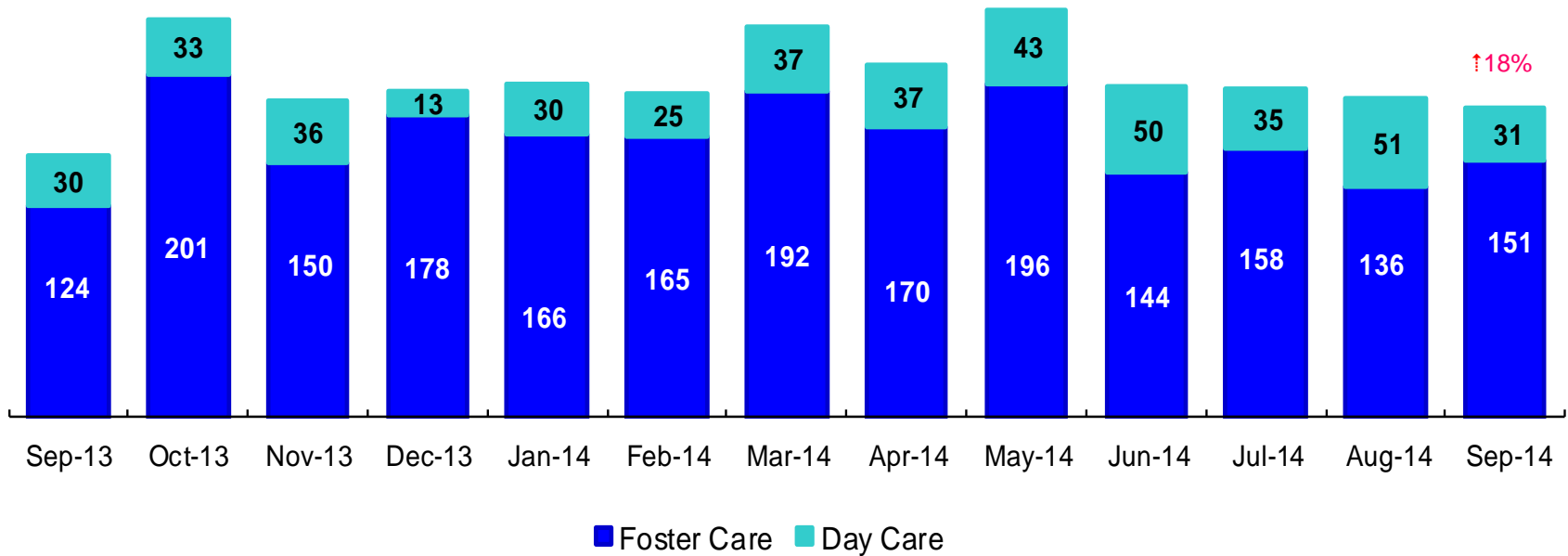
July 2013 – September 2013 & July 2014 – September 2014



\* Caseloads are of protective/diagnostic caseworkers only and exclude the caseloads carried by Level I and Level II Supervisors. 6

### OSI Investigations by Program

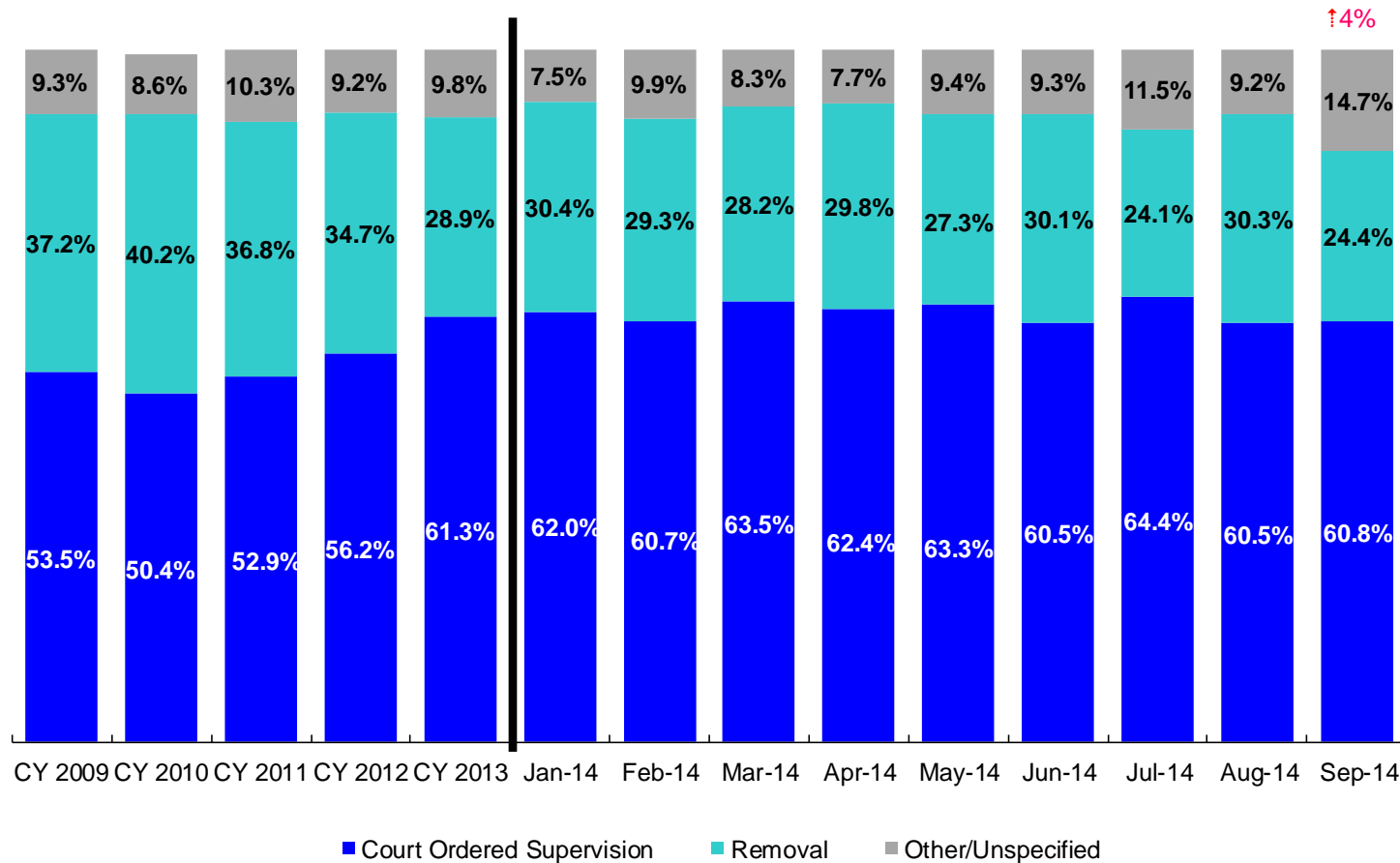
September 2013 – September 2014



	Sep 2013	Oct 2013	Nov 2013	Dec 2013	Jan 2014	Feb 2014	Mar 2014	Apr 2014	May 2014	Jun 2014	July 2014	Aug 2014	Sep 2014
Number of Investigations	154	234	186	191	196	190	229	207	239	194	193	187	182

Note: Percentage change is September 2013 vs. September 2014.

Article 10 Total Filings & Filing Outcomes, CY 2009 - CY 2013 and January – September 2014

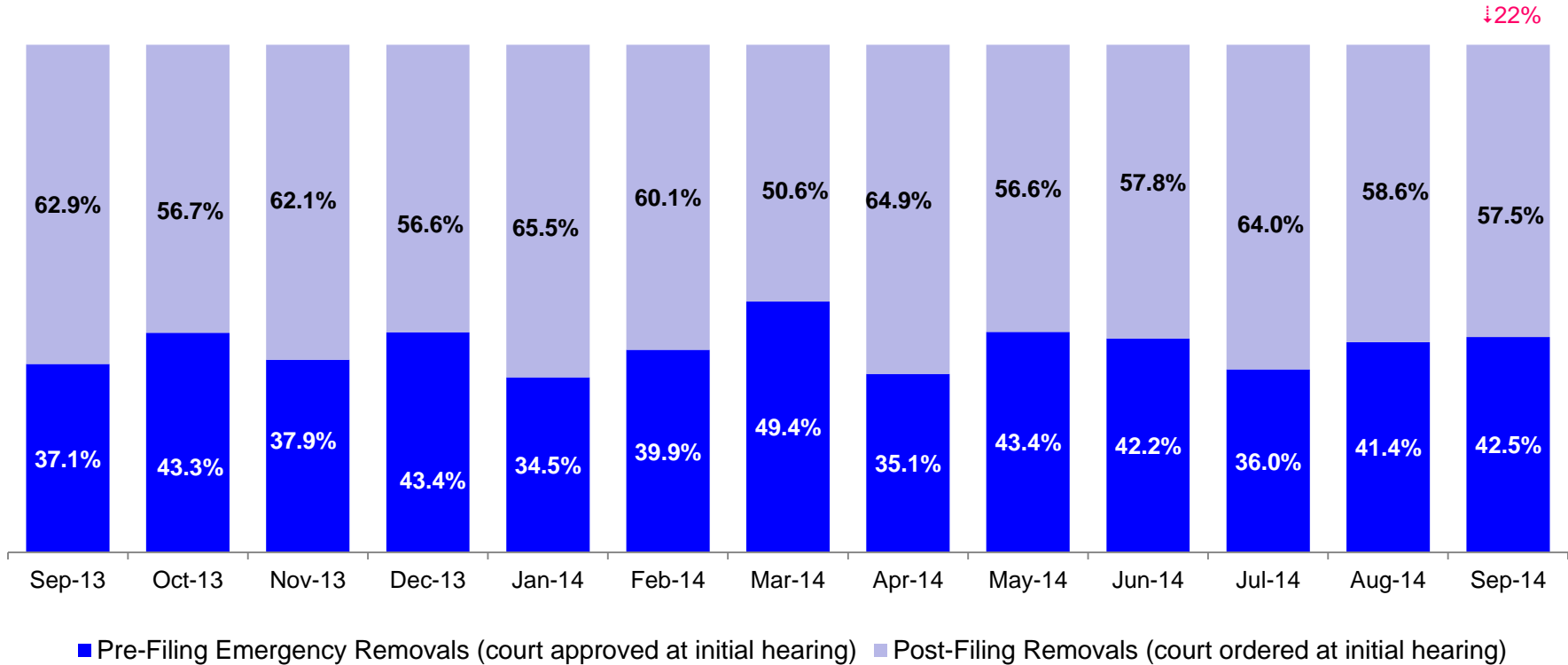


	CY 2009	CY 2010	CY 2011	CY 2012	CY 2013	Jan 2014	Feb 2014	Mar 2014	Apr 2014	May 2014	Jun 2014	Jul 2014	Aug 2014	Sep 2014
Art.10 Filings	11,568	10,093	9,596	8,913	9,318	743	828	905	801	978	826	713	749	733

Notes: 1) The category “Other/Unspecified” includes released with no supervision, no order issued and no outcome specified. Outcomes of cases heard the next day are not captured in this report. 2) Percentage change is September 2013 vs. September 2014.



### Article 10 Filing Removals, September 2013 – September 2014



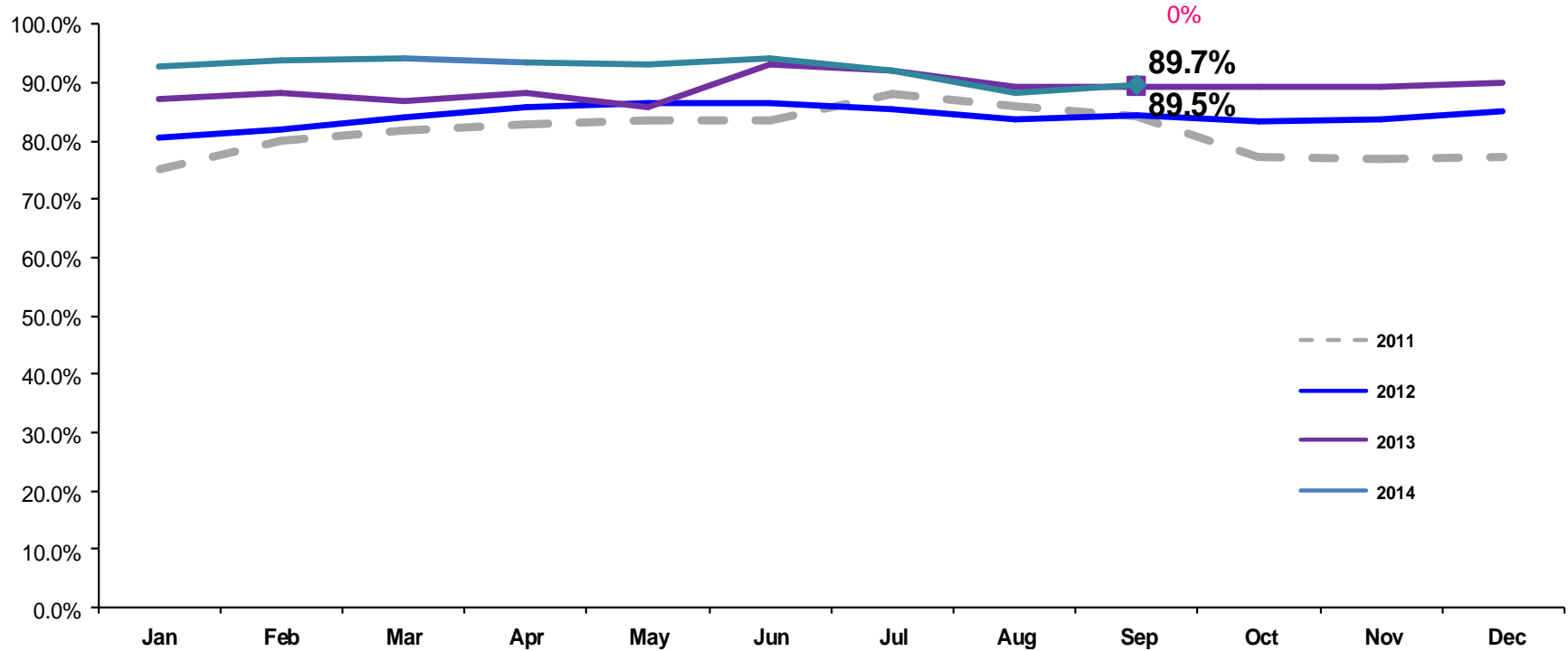
	Sep 2013	Oct 2013	Nov 2013	Dec 2013	Jan 2014	Feb 2014	Mar 2014	Apr 2014	May 2014	Jun 2014	Jul 2014	Aug 2014	Sep 2014
Number of Removals	229	261	224	212	226	243	255	239	267	249	172	227	179

Note: Percentage change is September 2013 vs. September 2014.

## PPRS Utilization Rate

January 2011 – September 2014 (End of Month)

General Preventive

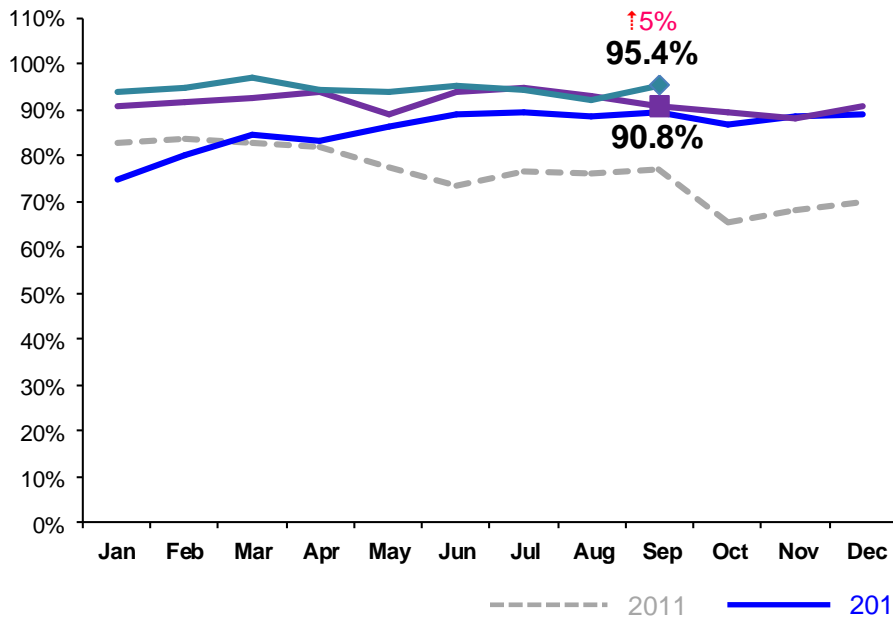


Notes: 1) Beacons programs are included in the GP utilization rates. 2) During February - June 2011 GP rates were adjusted by excluding programs in the process of being closed. GP rates were also adjusted during July – September 2011 by excluding newly opened programs. 3) During June-October 2013 GP programs in the process of converting to EBMs were excluded from the GP utilization statistics. 4) Percentage change is September 2013 vs. September 2014.

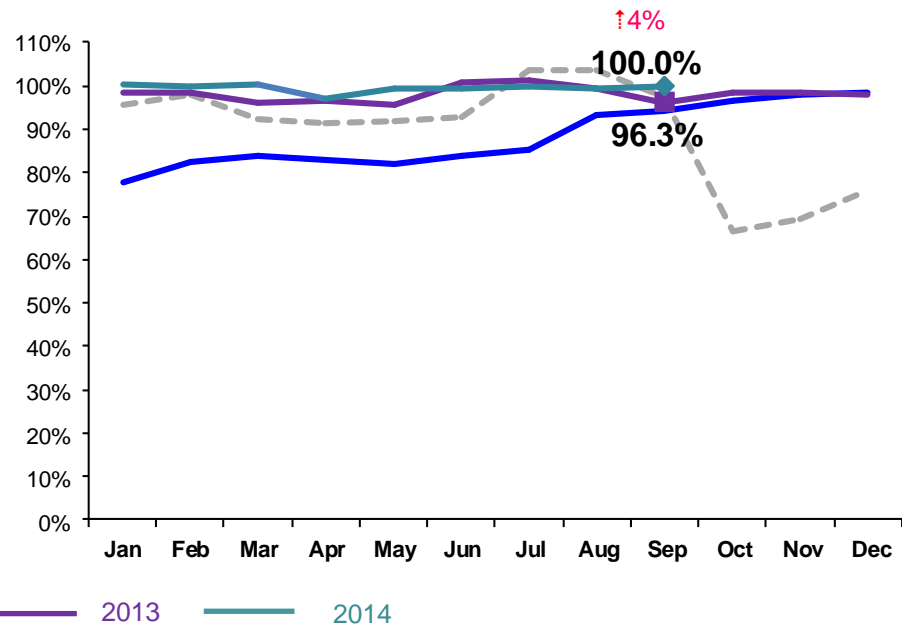
### PPRS Utilization Rate

January 2011 – September 2014 (End of Month)

Family Rehabilitation Program/Family Treatment Rehabilitation



Medically Fragile

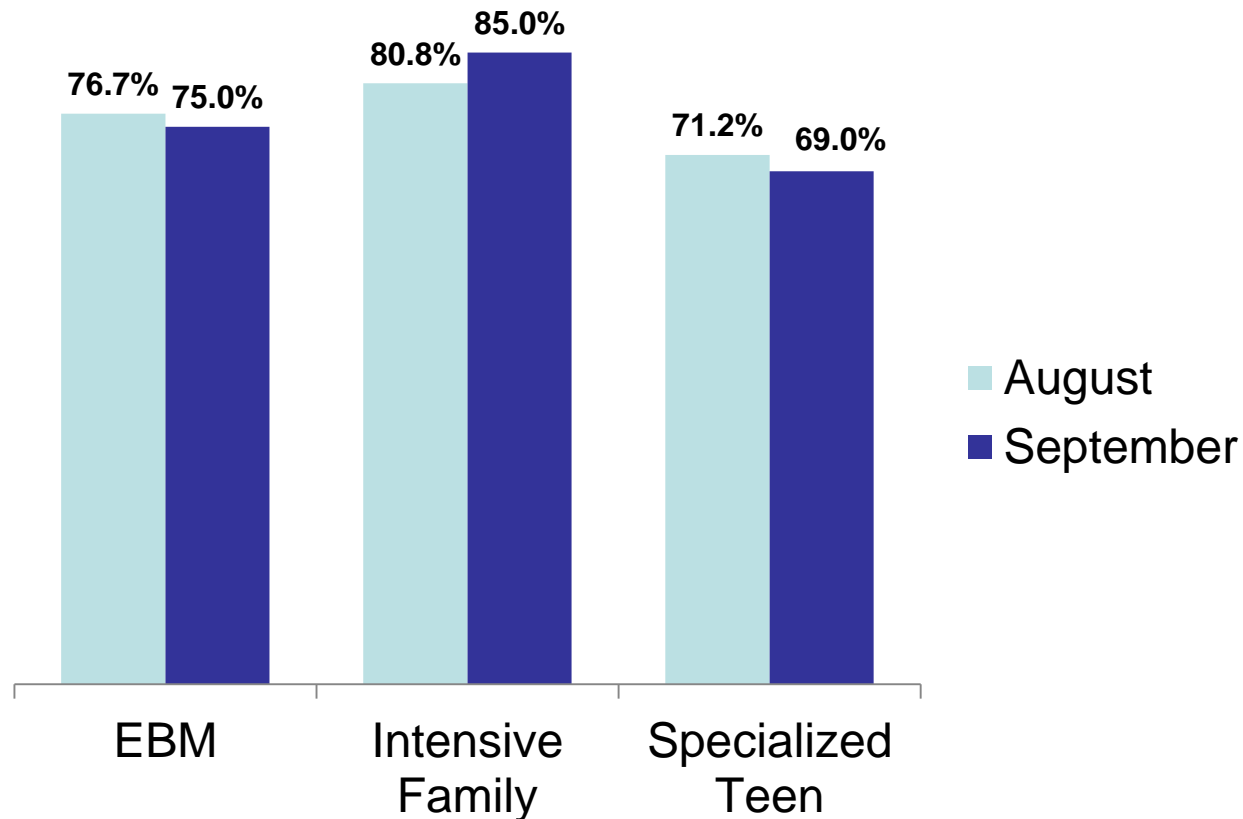


Notes: 1) During February - June 2011 FRP rates were adjusted by excluding programs in the process of being closed. FT/R rates were also adjusted during July – September 2011 by excluding newly opened programs. As of October 2011 all FT/R programs are included in the FT/R utilization rates. 2) Beginning July 2011 Family Treatment Rehabilitation programs replaced the Family Rehabilitation programs. 3) Beginning December 2011 the NYF Family Services for deaf Children and Adults program is no longer included in the medically fragile utilization rate. 4) During June -October 2013 FTR programs in the process of converting to EBMs were excluded from the FTR utilization statistics. 5) Percentage change is September 2013 vs. September 2014.

## PPRS Utilization Rate

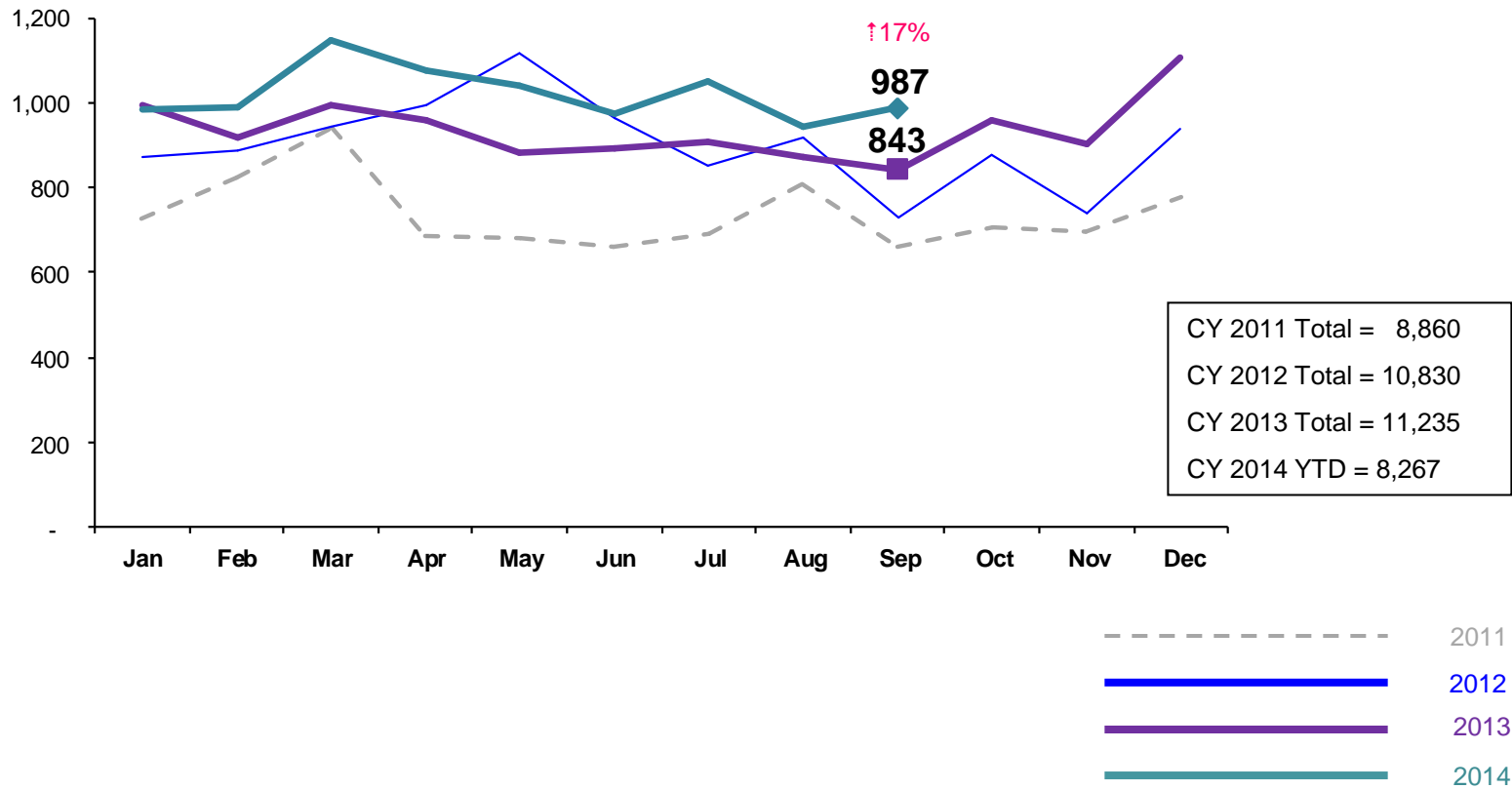
August – September 2014 (End of Month)

EBM, Intensive Family and Specialized Teen



### New Preventive Cases\*

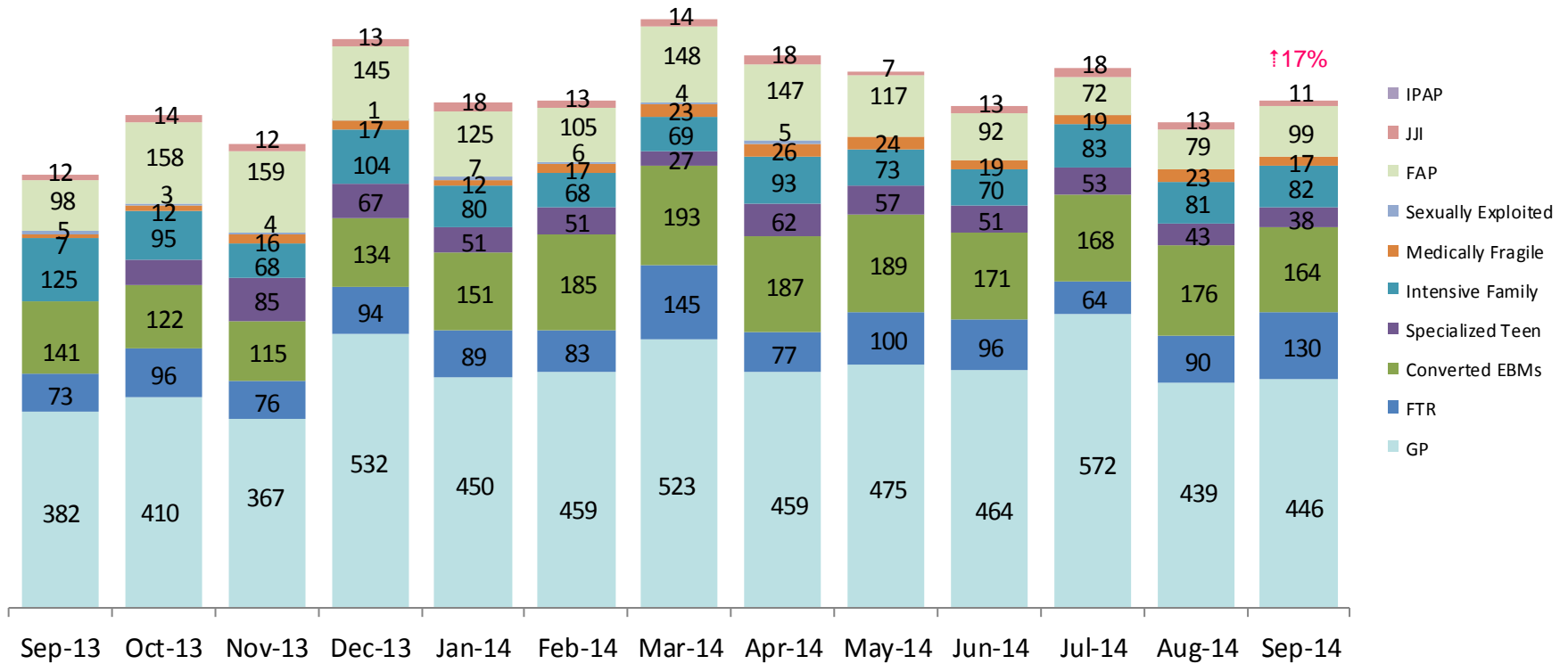
January 2011 – September 2014



\*Notes: 1) New preventive cases do not include cases transferred from one preventive program to another. 2) Percentage change is September 2013 vs. September 2014. 3) See Pages 36 and 37 of the Appendix for supporting data.

### New Preventive Cases\* by Program Type

September 2013 – September 2014

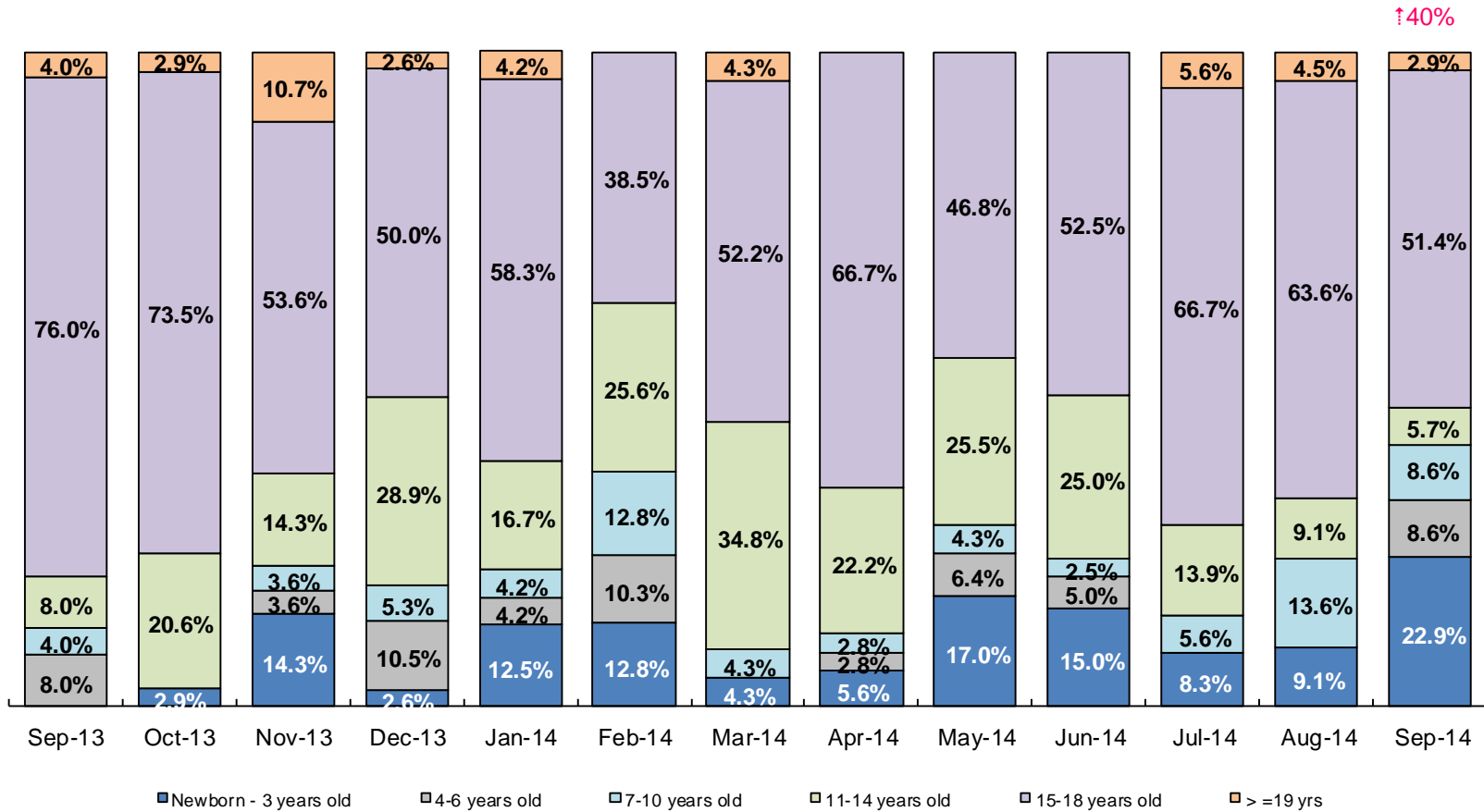


	Sep 2013	Oct 2013	Nov 2013	Dec 2013	Jan 2014	Feb 2014	Mar 2014	Apr 2014	May 2014	Jun 2014	Jul 2014	Aug 2014	Sep 2014
Number of New Preventive Cases	843	959	902	1,107	983	987	1,146	1,074	1,042	976	1,050	944	987

Notes: 1) New preventive cases do not include cases transferred from one preventive program to another. 2) Percentage change is September 2013 vs. September 2014.

### Children's Center Population by Age

September 2013 – September 2014

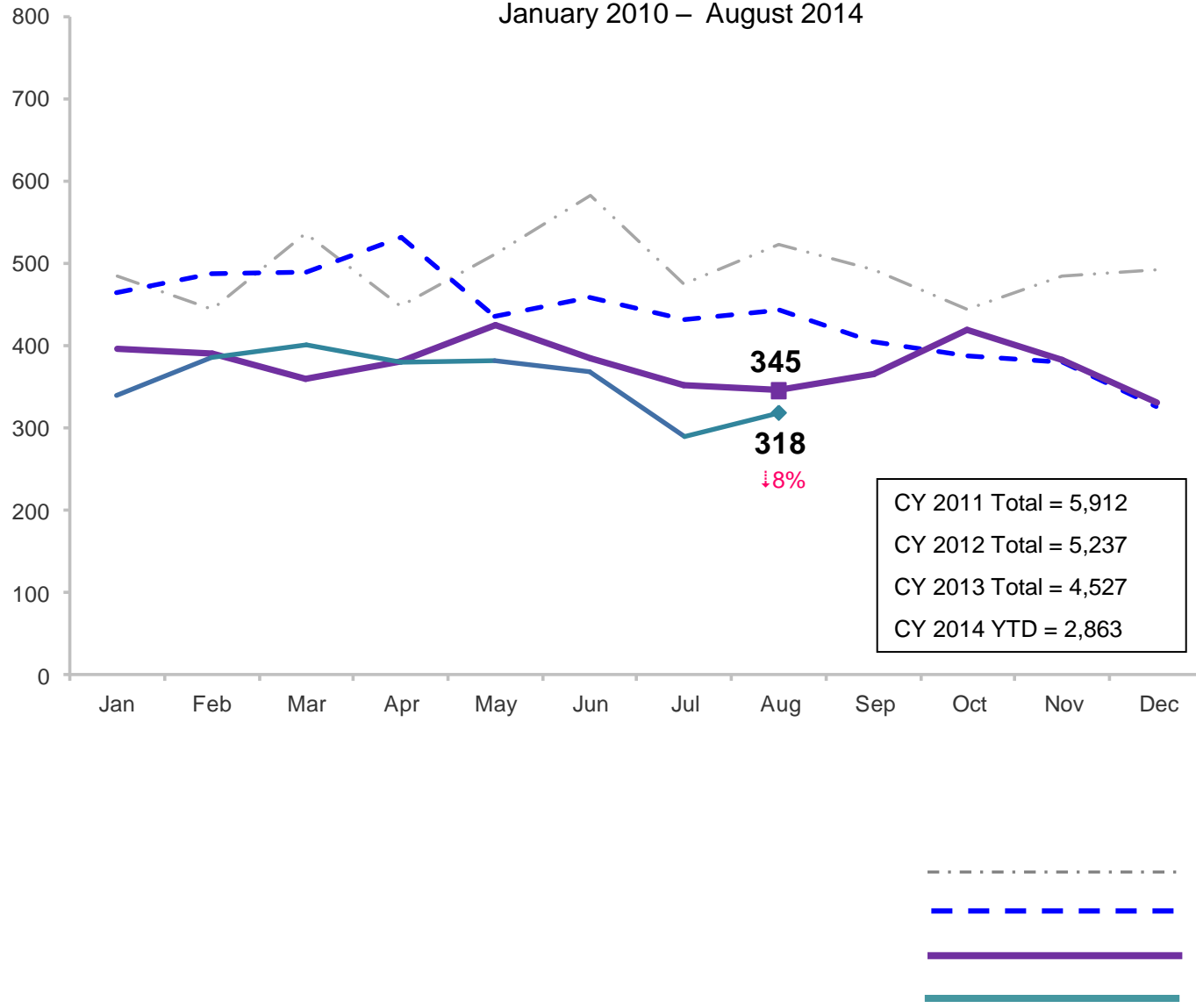


	Sep 2013	Oct 2013	Nov 2013	Dec 2013	Jan 2014	Feb 2014	Mar 2014	Apr 2014	May 2014	Jun 2014	Jul 2014	Aug 2014	Sep 2014
Number of Children	25	34	28	38	24	39	23	36	47	40	36	22	35

Note: Percentage change is September 2013 vs. September 2014.

### Total Monthly Placements

January 2010 – August 2014

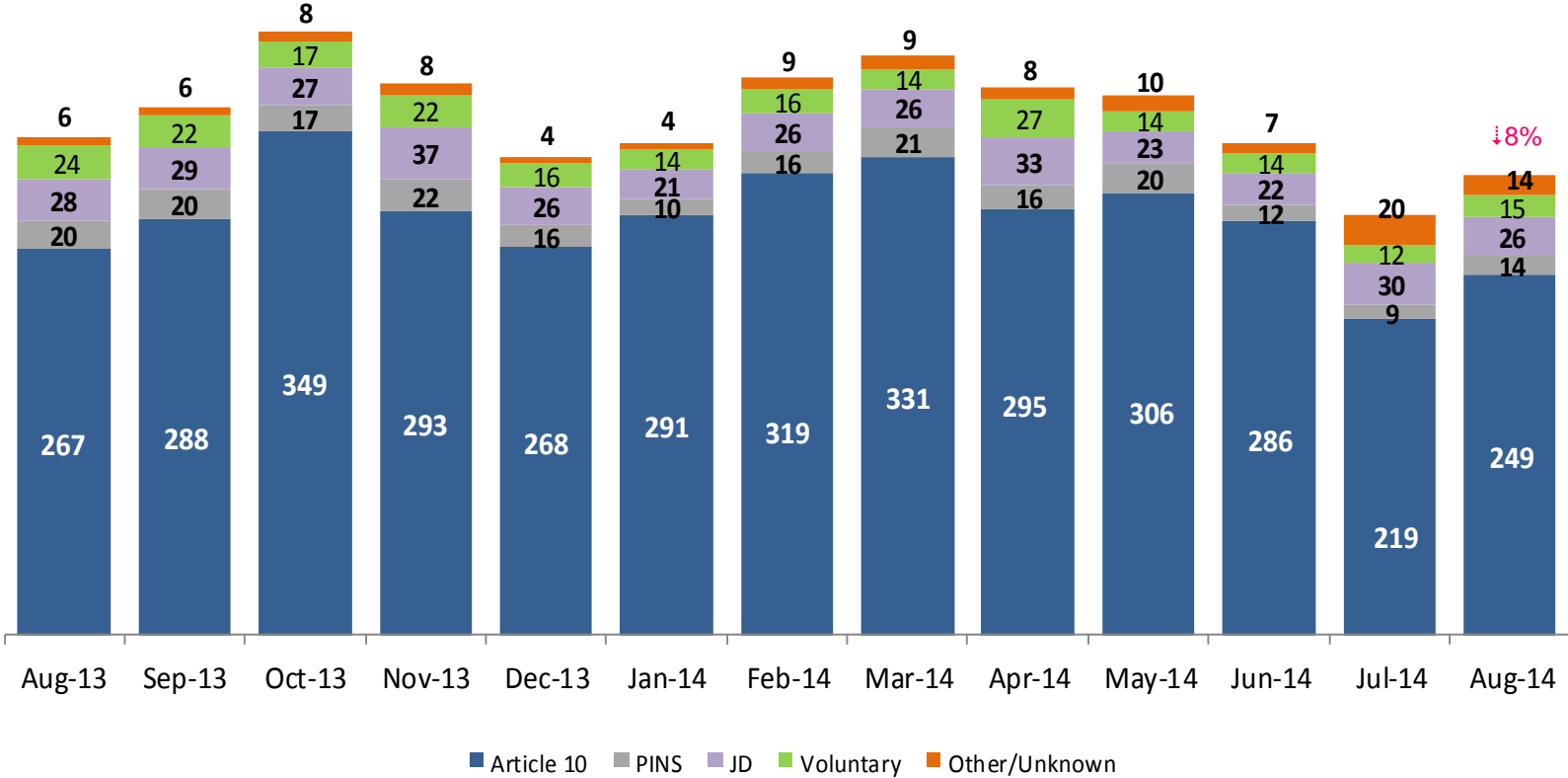


Note: Percentage change is August 2013 vs. August 2014.



### Reason for Initial Placements into Foster Care

August 2013 – August 2014

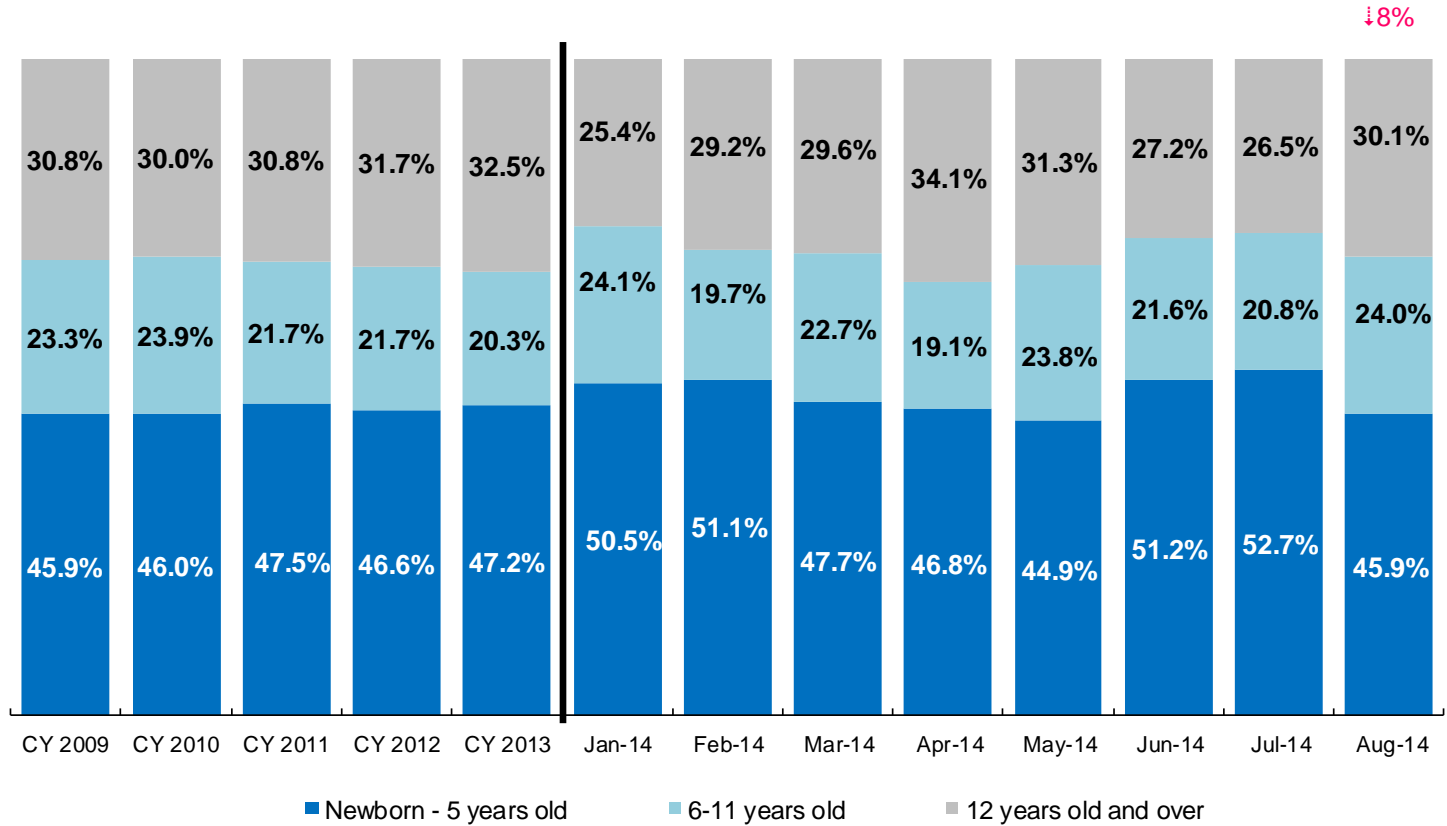


	Aug 2013	Sep 2013	Oct 2013	Nov 2013	Dec 2013	Jan 2014	Feb 2014	Mar 2014	April 2014	May 2014	Jun 2014	Jul 2014	Aug 2014
Number of Placements	345	365	418	382	330	340	386	401	379	382	367	290	318

Note: Percentage change is August 2013 vs. August 2014.

### Placements\* by Age

CY 2009 – CY 2013 and January – August 2014

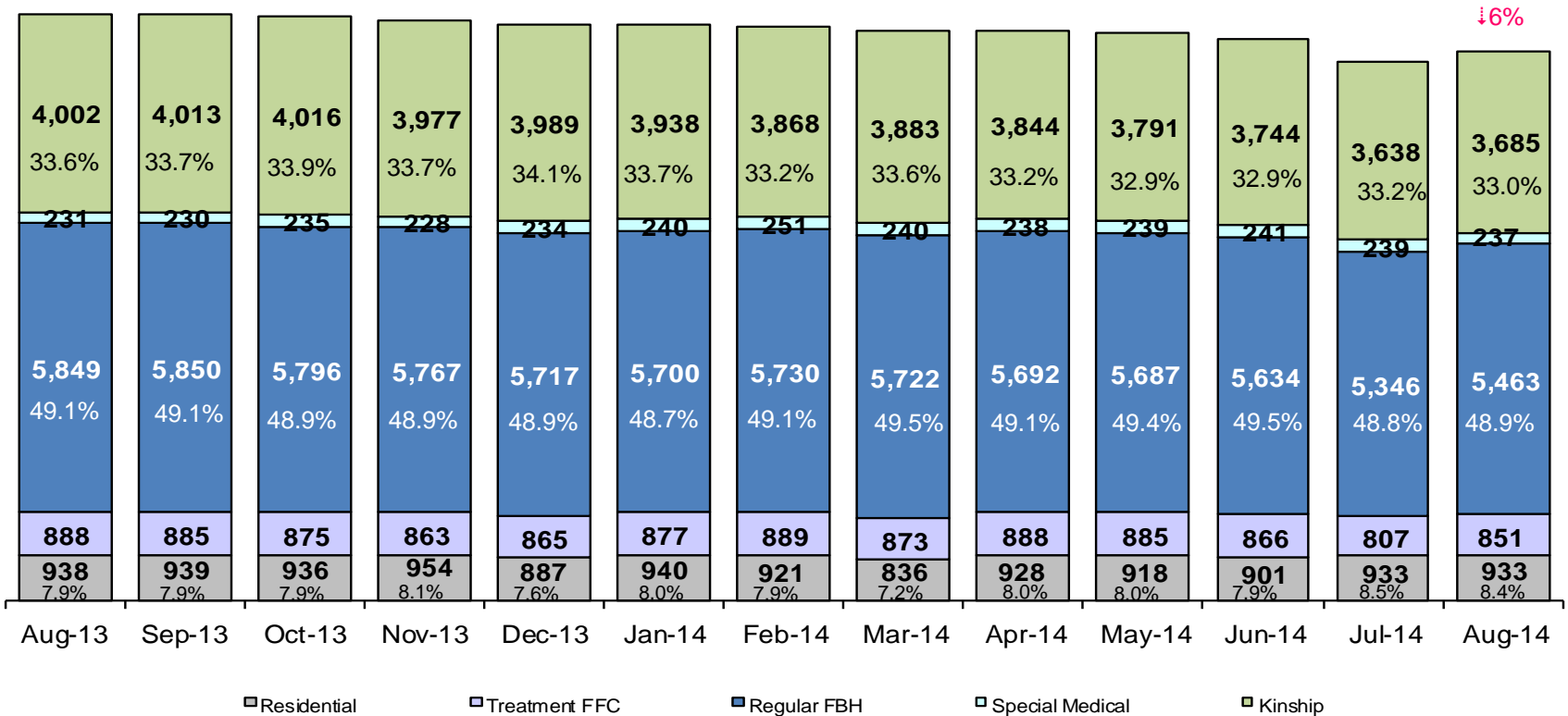


	CY 2008	CY 2009	CY 2010	CY 2011	CY 2012	CY 2013	Jan 2014	Feb 2014	Mar 2014	Apr 2014	May 2014	Jun 2014	Jul 2014	Aug 2014
Placements	4,764	5,657	5,842	4,941	4,823	4,170	319	360	375	346	361	342	260	292

\*Excludes JD placements.

Note: Percentage change is August 2013 vs. August 2014.

### Children in Foster Care\* August 2013 – August 2014 (end of month)

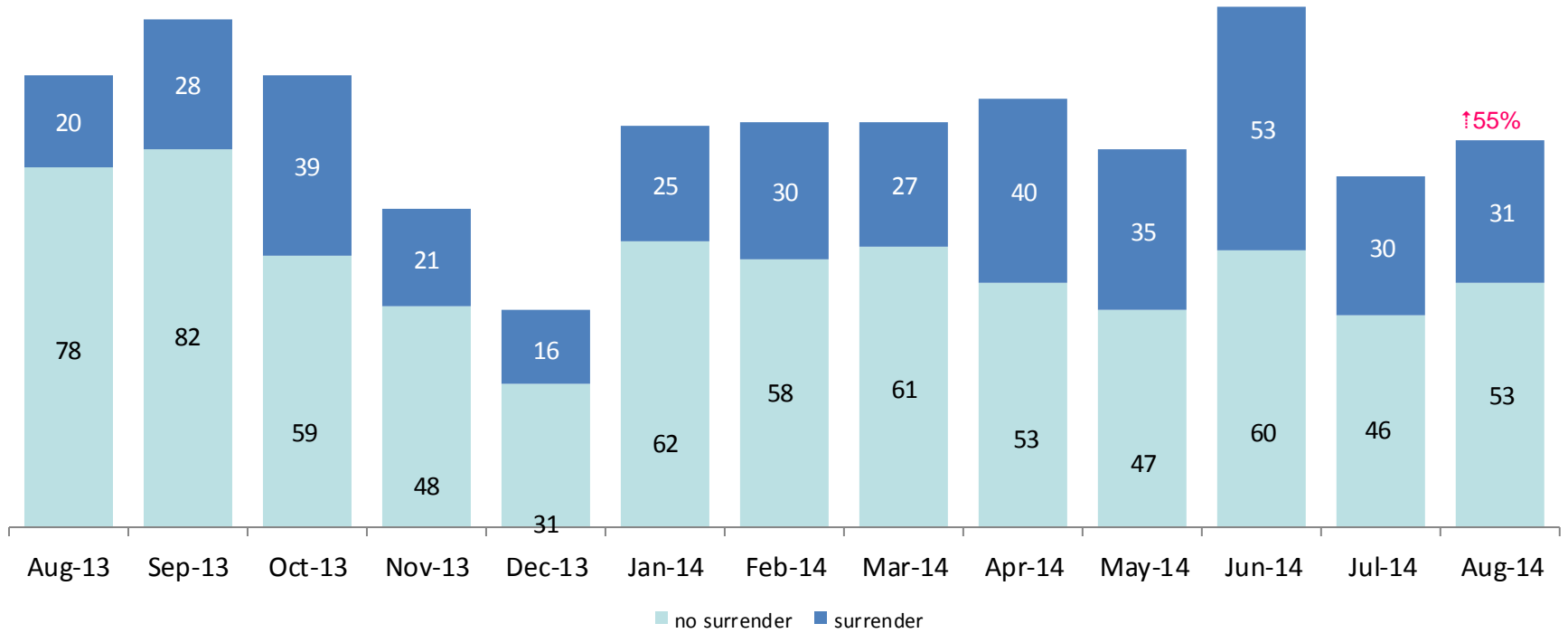


	Aug 2013	Sep 2013	Oct 2013	Nov 2013	Dec 2013	Jan 2014	Feb 2014	Mar 2014	Apr 2014	May 2014	Jun 2014	Jul 2014	Aug 2014
Number in Foster Care	11,908	11,917	11,858	11,789	11,692	11,695	11,659	11,554	11,590	11,520	11,386	10,963	11,169

\*Excludes JD placements and includes approximately 400 young children who are living in foster homes or residential care facilities with their mothers who are in foster care (8D children).

Note: Percentage change is August 2013 vs. August 2014.

### Children Freed for Adoption, Surrender by at Least One Parent August 2013 – August 2014

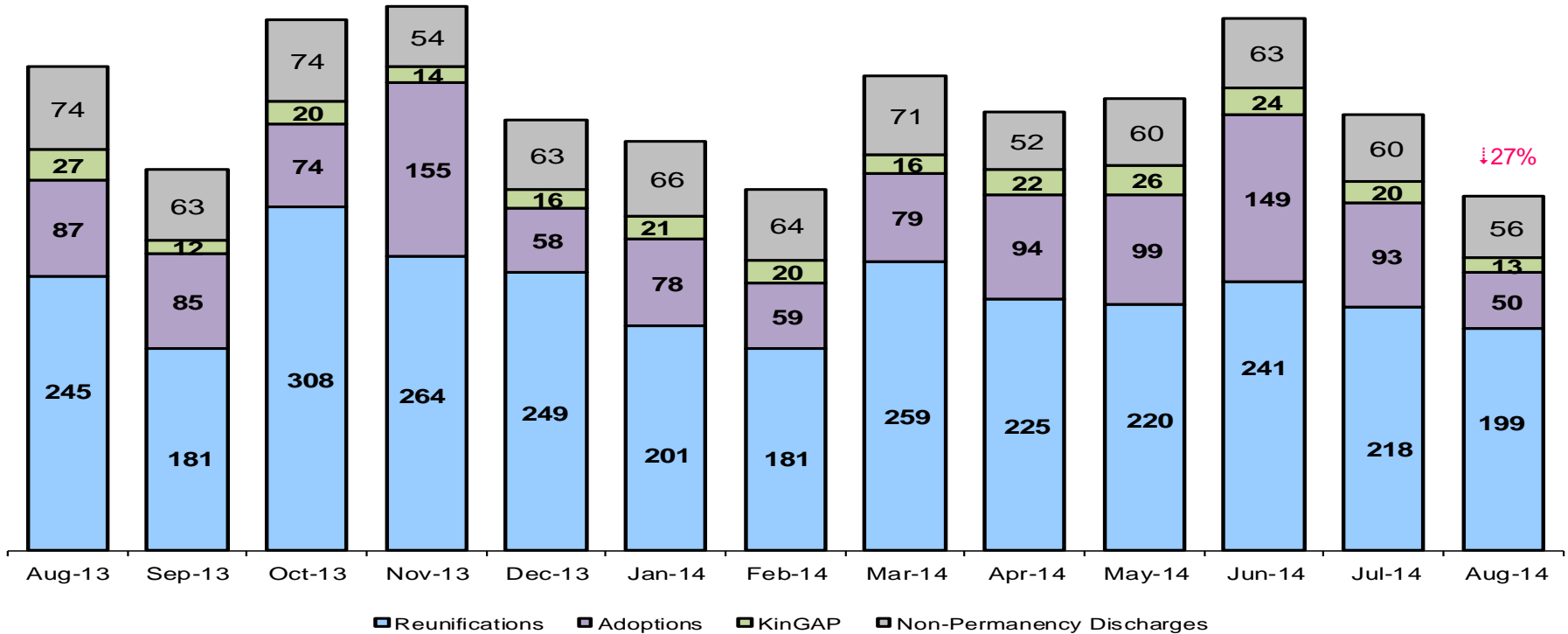


	Aug 2013	Sep 2013	Oct 2013	Nov 2013	Dec 2013	Jan 2014	Feb 2014	Mar 2014	Apr 2014	May 2014	Jun 2014	Jul 2014	Aug 2014
Number Freed for Adoption	98	110	98	69	47	87	88	88	93	82	113	76	84

↑55%

Note: Percentage change is for the number of children surrendered by at least on parent during August 2013 vs. August 2014.

## Permanency and Non-Permanency\* Discharges from Foster Care\*\* August 2013 – August 2014



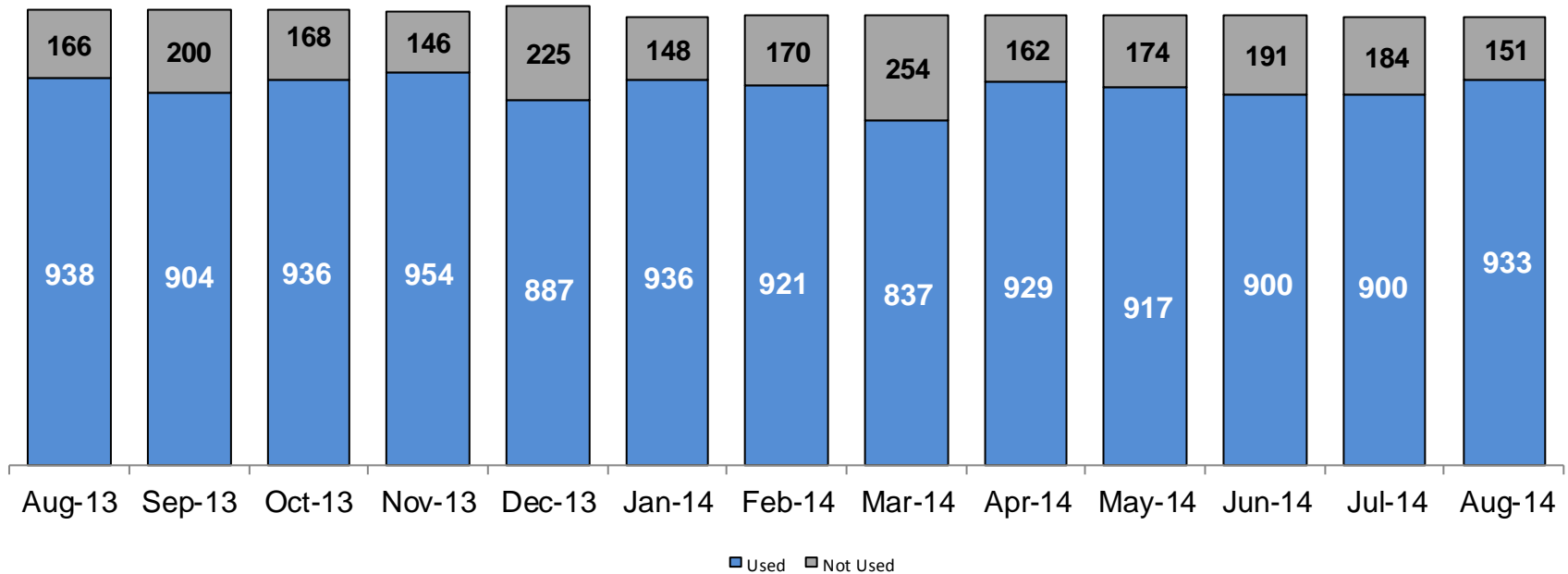
	Aug 2013	Sep 2013	Oct 2013	Nov 2013	Dec 2013	Jan 2014	Feb 2014	Mar 2014	Apr 2014	May 2014	Jun 2014	Jul 2014	Aug 2014
Number of Discharges	433	341	476	487	386	366	324	425	393	405	477	391	318

\*Non-permanency discharges include AWOL, APPLA as well as other discharge destinations such as mental institutions and correctional facilities and discharges with unspecified destinations.

\*\*Excludes discharges of youth who were in JD status at any time during their foster care spell.

Note: Percentage change is August 2013 vs. August 2014.

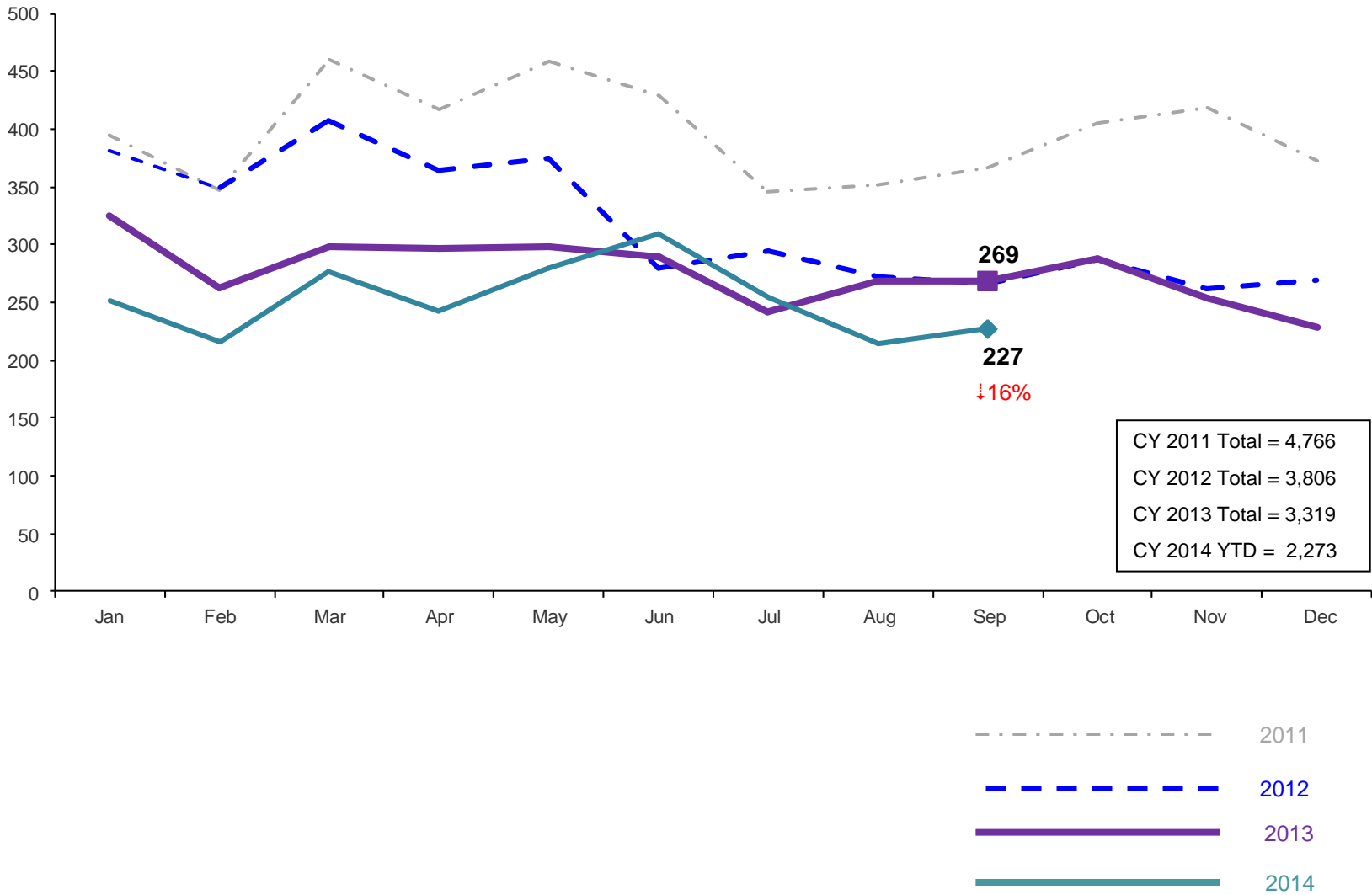
### Residential Care Capacity and Utilization, August 2013 – August 2014



	Aug 2013	Sep 2013	Oct 2013	Nov 2013	Dec 2013	Jan 2014	Feb 2014	Mar 2014	Apr 2014	May 2014	Jun 2014	Jul 2014	Aug 2014
Capacity	1,104	1,104	1,104	1,100	1,112	1,084	1,091	1,091	1,091	1,091	1,091	1,084	1,084

### Total Monthly Admissions to Detention

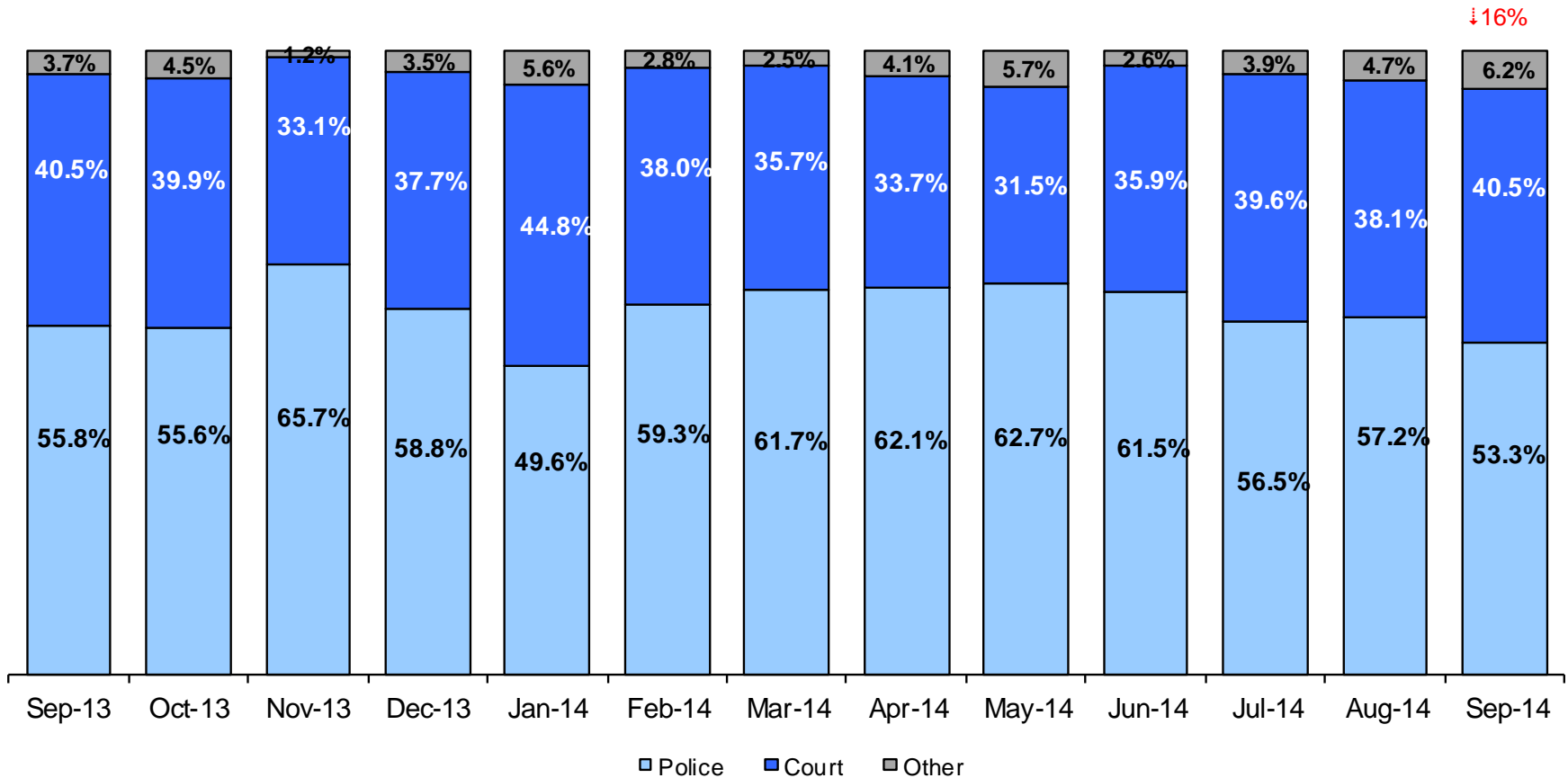
January 2011 – September 2014 (Monthly Total)



Note: Percentage change is September 2013 vs. September 2014.

### Admit Authority on Admissions

September 2013 - September 2014 (Monthly Total)



	Sep 2013	Oct 2013	Nov 2013	Dec 2013	Jan 2014	Feb 2014	Mar 2014	Apr 2014	May 2014	Jun 2014	Jul 2014	Aug 2014	Sep 2014
Number of Admissions	269	288	254	228	252	216	277	243	279	309	255	215	227

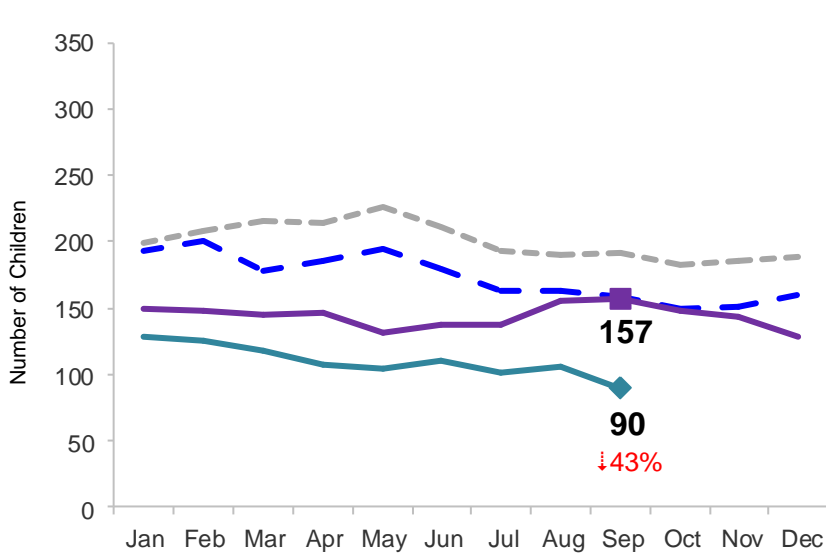
Notes: 1) Other Admit Authority includes the Sheriff Department, Department of Corrections and ACS. 2) Percentage change is September 2013 vs. September 2014.



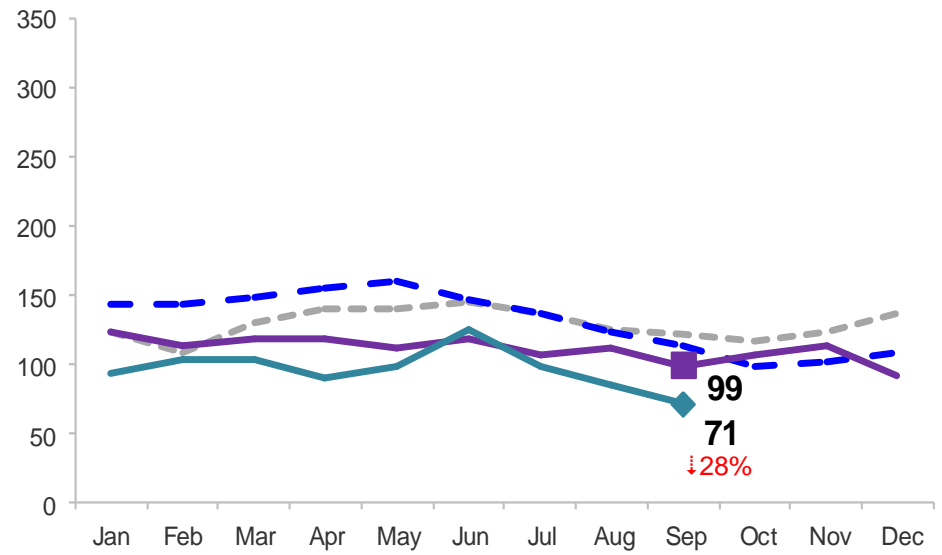
### Monthly Average Daily Population

January 2011 – September 2014

#### Secure Detention



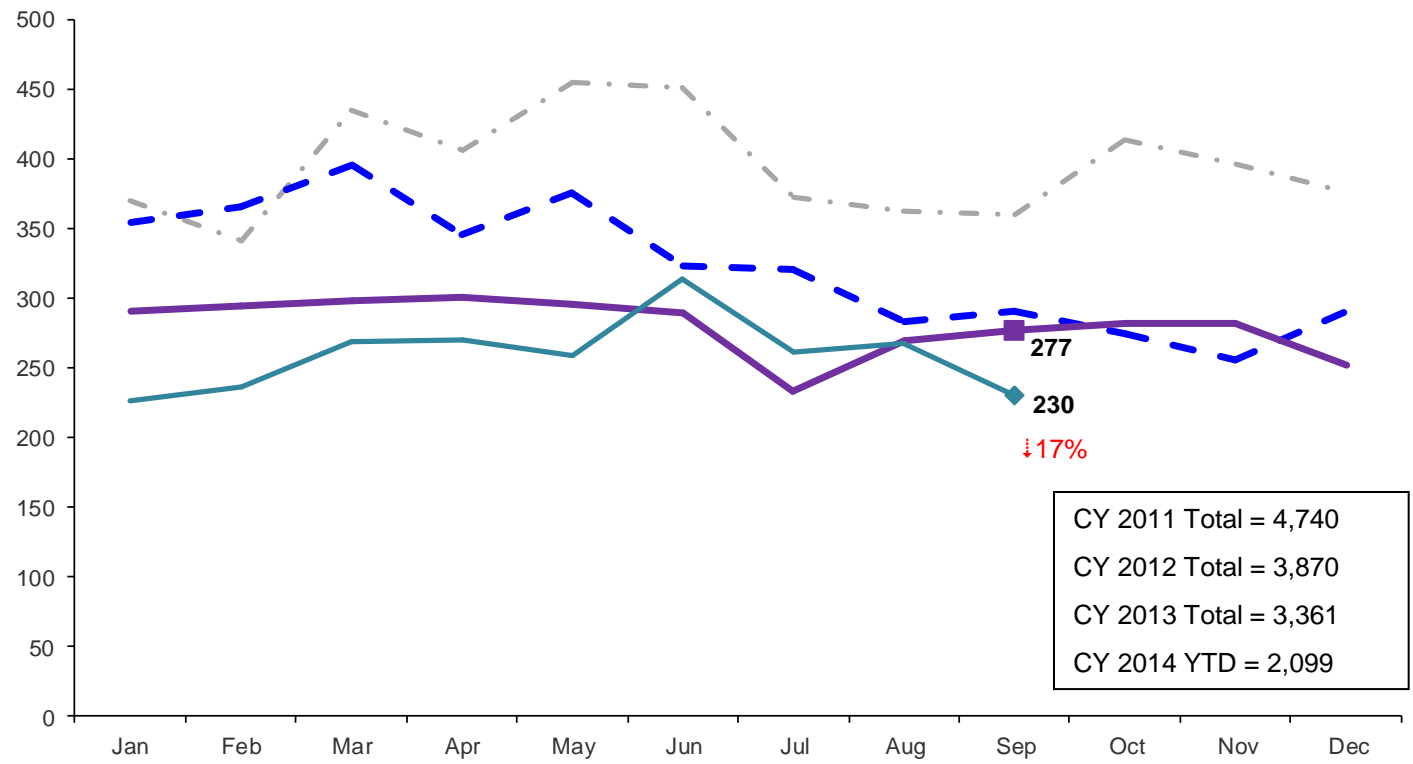
#### Non-Secure Detention



Note: Percentage change is September 2013 vs. September 2014.

### Total Monthly Releases from Detention

January 2011 – September 2014 (Monthly Total)

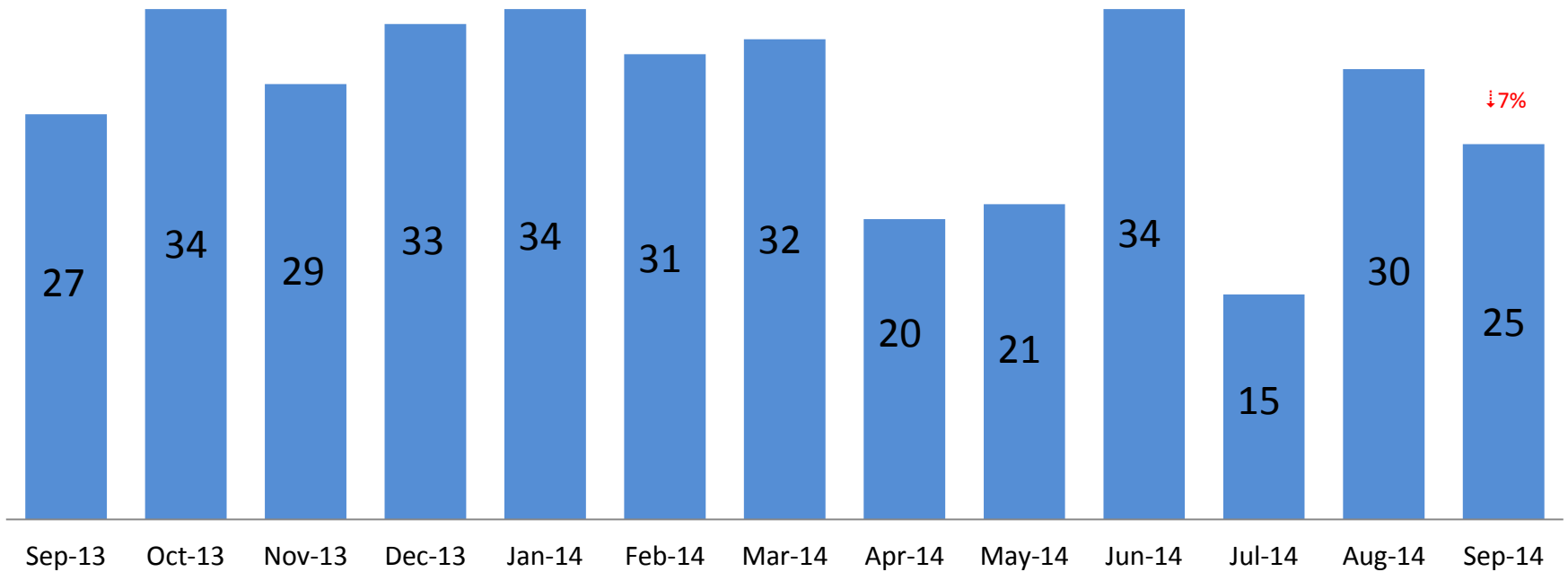


CY 2011 Total = 4,740  
 CY 2012 Total = 3,870  
 CY 2013 Total = 3,361  
 CY 2014 YTD = 2,099



Note: Percentage change is September 2013 vs. September 2014.

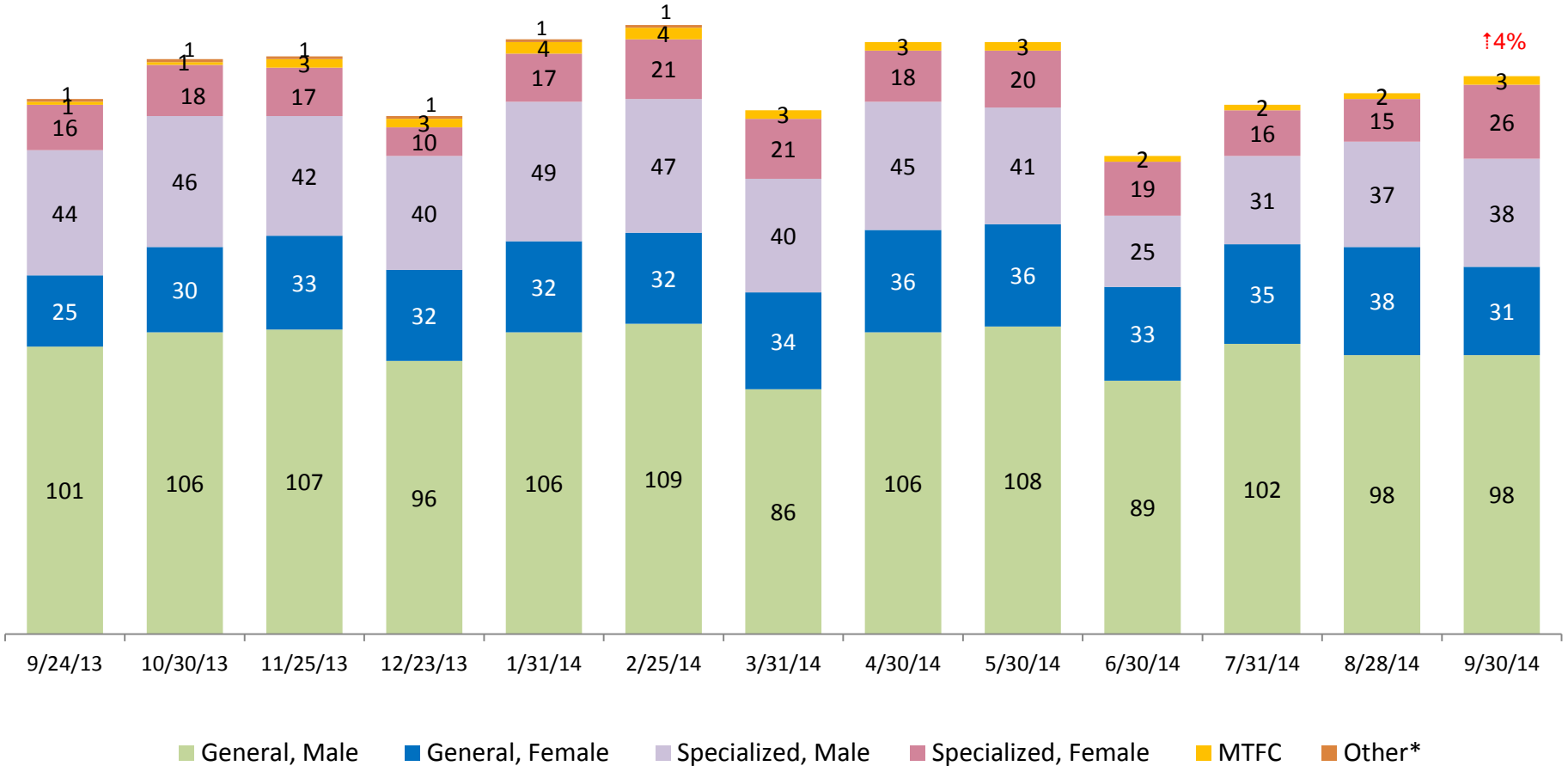
### ACS NSP Intakes September 2013 – September 2014



Note: Percentage change is September 2013 vs. September 2014.

# ACS Non-Secure Placement, in 24 hour Care

September 2013 – September 2014 (Point-in-Time)

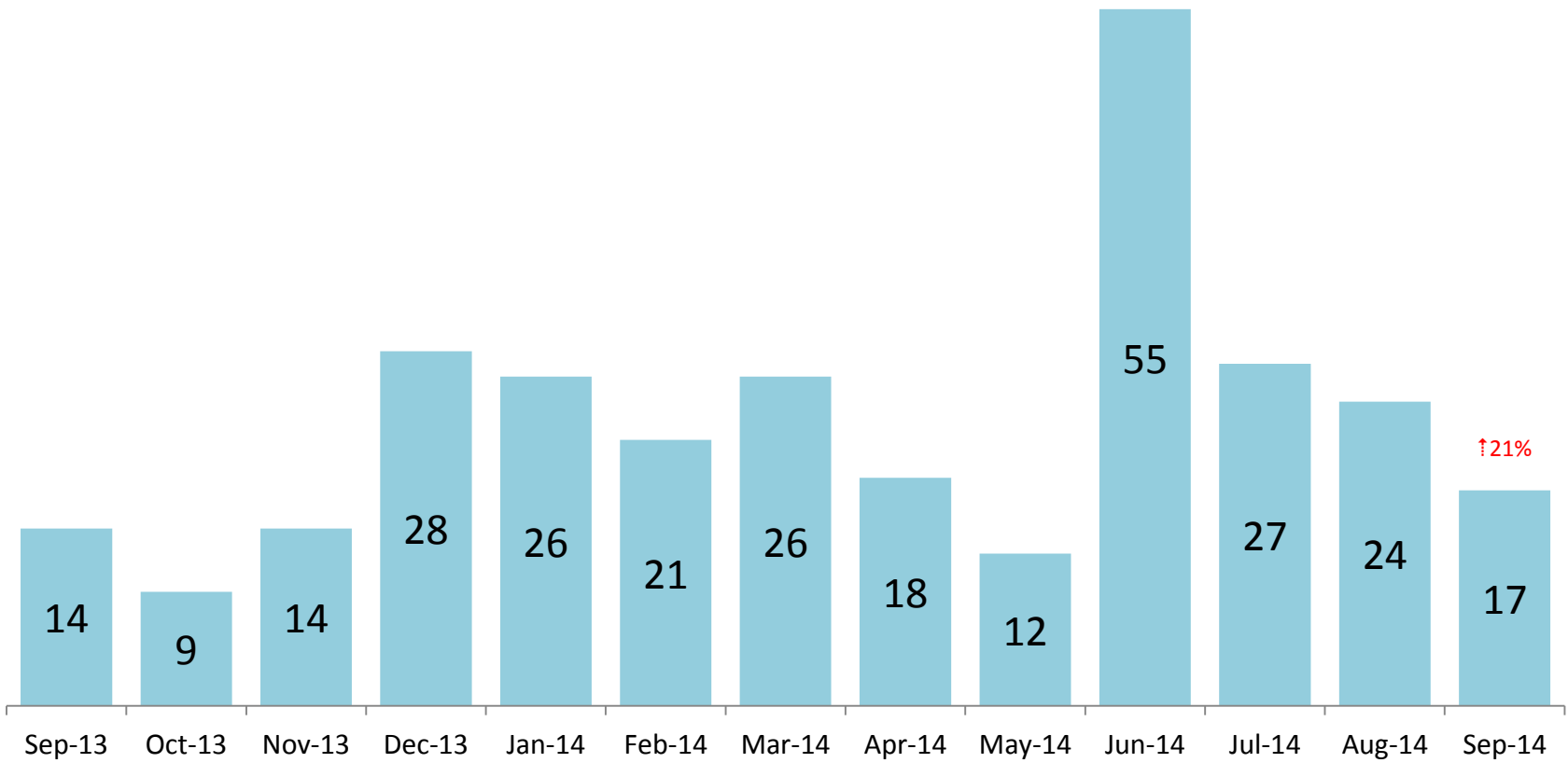


	9/24/13	10/30/13	11/25/13	12/23/13	1/31/14	2/25/14	3/31/14	4/30/14	5/30/14	6/30/14	7/31/14	8/28/14	9/30/14
Number in Placement	188	202	203	182	209	214	184	208	208	168	186	190	196

\*Other includes NYC youth in voluntary placements with Lincoln Hall, MercyFirst and Graham Windham.

Note: Percentage change is September 2013 vs. September 2014.

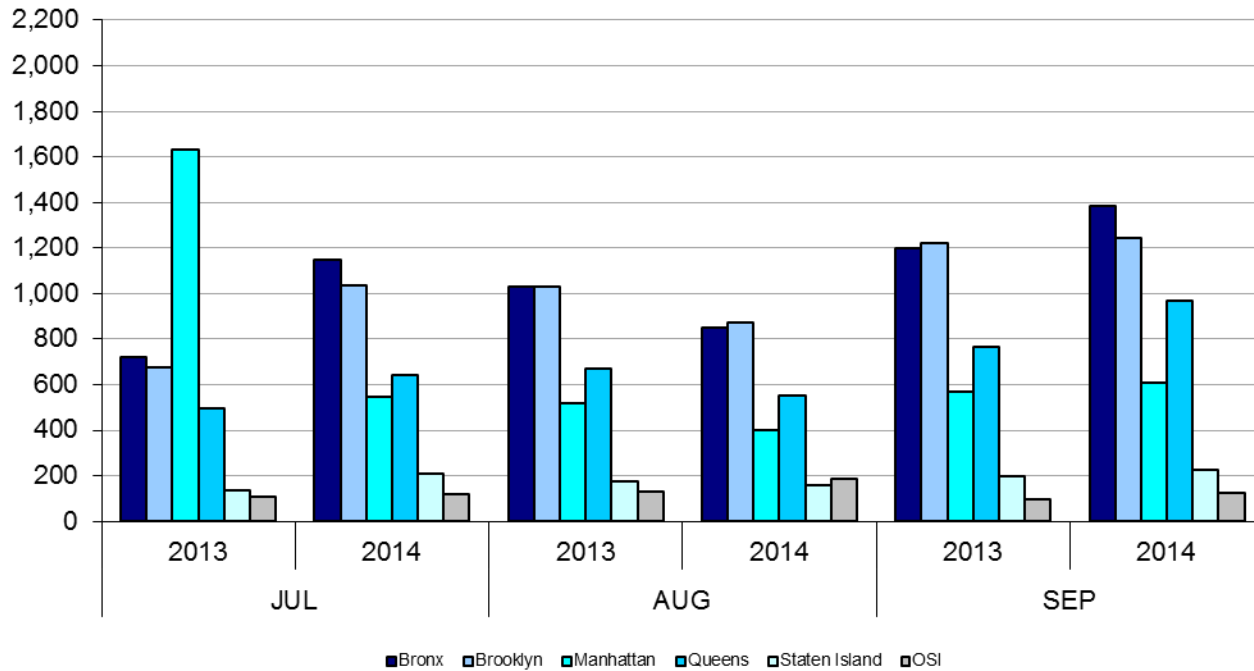
### Releases from NSP to Aftercare September 2013 – September 2014



Note: Percentage change is September 2013 vs. September 2014.

# Appendix

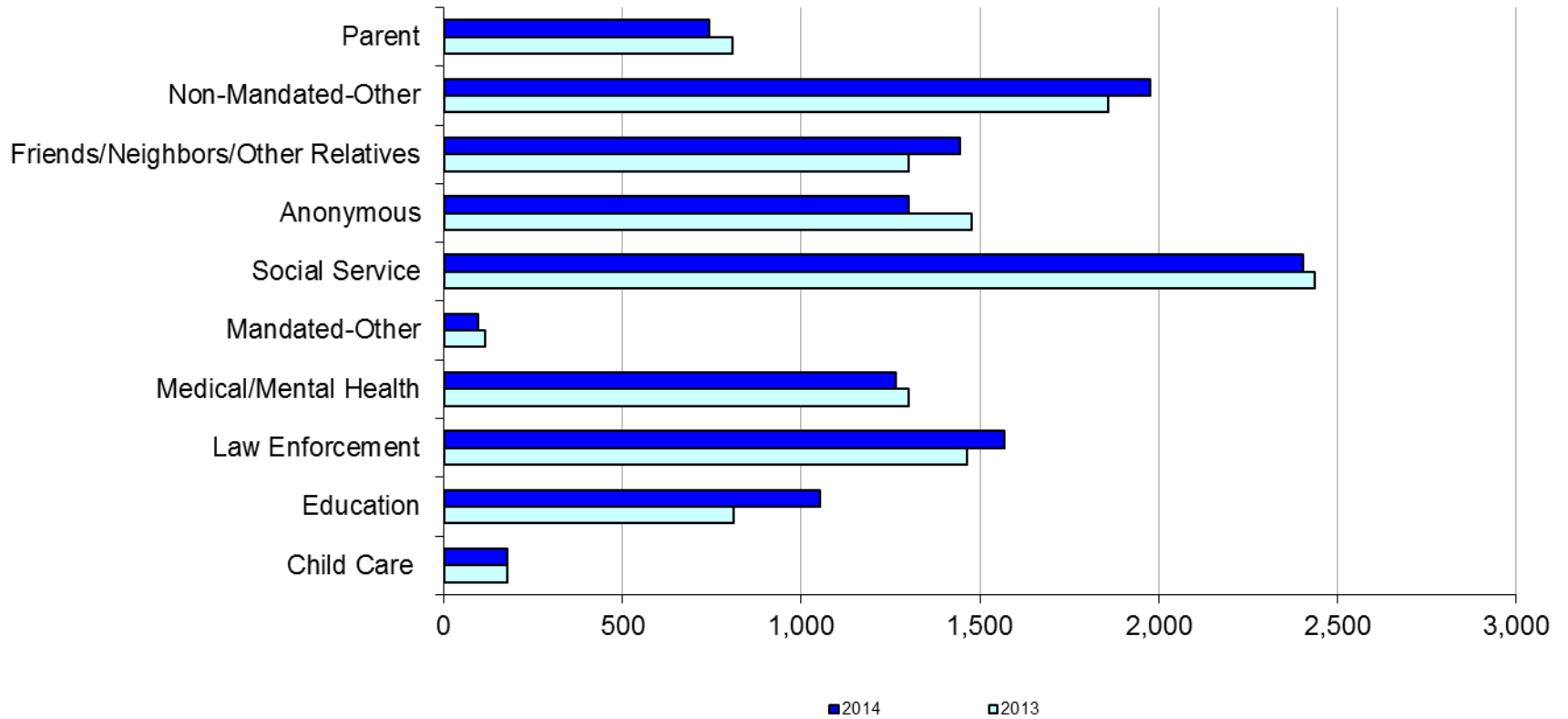
Figure 1: SCR Intakes by Borough, JUL 13 – SEP 13 and JUL 14 – SEP 14



**TABLE 1 - SCR Intake Changes by Borough, JUL 13 – SEP 13 and JUL 14 – SEP 14**

Month	Year	Bronx	Brooklyn	Manhattan	Queens	Staten Island	OSI	Other	Total
JUL	2013	722	678	1,632	493	134	106	128	3,893
	2014	1,148	1,034	546	641	209	121	124	3,823
	% Change	59.0%	52.5%	-66.5%	30.0%	56.0%	14.2%	-3.1%	-1.8%
AUG	2013	1,028	1,032	516	669	177	132	133	3,687
	2014	852	873	398	552	158	185	91	3,109
	% Change	-17.1%	-15.4%	-22.9%	-17.5%	-10.7%	40.2%	-31.6%	-15.7%
SEP	2013	1,197	1,220	569	763	198	95	118	4,160
	2014	1,386	1,242	610	967	224	123	131	4,683
	% Change	15.8%	1.8%	7.2%	26.7%	13.1%	29.5%	11.0%	12.6%
Total	2013	2,947	2,930	2,717	1,925	509	333	379	11,740
	2014	3,386	3,149	1,554	2,160	591	429	346	11,615
	% Change	14.9%	7.5%	-42.8%	12.2%	16.1%	28.8%	-8.7%	-1.1%

**Figure 2: Citywide SCR Intakes by Reporter Group, JUL 13 – SEP 13 and JUL 14 – SEP 14**

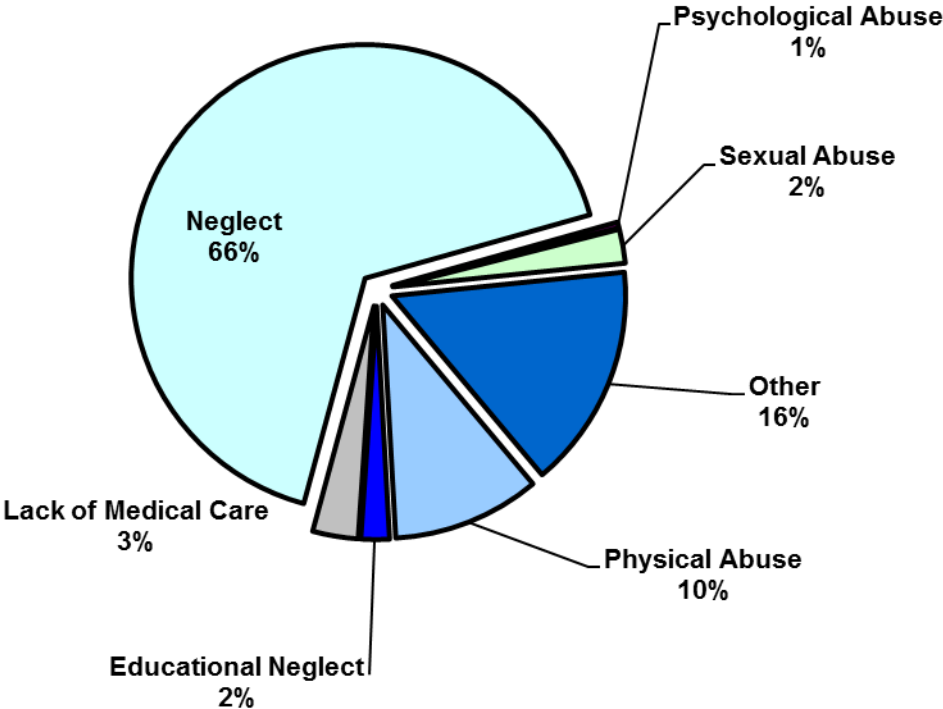




**TABLE 2 - SCR Intakes by Reporter Group, JUL 13 – SEP 13 and JUL 14 – SEP 14**

Year	Child Care/ Substitute Care Personnel	Educational Personnel	Law Enforcement	Medical/ Mental Health Personnel	Mandated- Other	Social Service Personnel	Anonymous	Friends/ Neighbors/ Other Relatives	Non- Mandated- Other	Parent	Foster Parent	Total
<b>Bronx</b>												
2013	44	235	383	368	36	699	385	399	563	224	2	3,338
2014	46	332	360	395	30	686	393	460	620	186	2	3,510
% Change	4.5%	41.3%	-6.0%	7.3%	-16.7%	-1.9%	2.1%	15.3%	10.1%	-17.0%	0.0%	5.2%
<b>Brooklyn</b>												
2013	53	261	373	363	28	630	469	382	542	201	0	3,302
2014	37	295	458	328	22	625	369	395	561	198	1	3,289
% Change	-30.2%	13.0%	22.8%	-9.6%	-21.4%	-0.8%	-21.3%	3.4%	3.5%	-1.5%	--	-0.4%
<b>Manhattan</b>												
2013	24	88	278	189	22	342	188	137	299	75	1	1,643
2014	28	118	288	186	21	348	134	156	268	84	0	1,631
% Change	16.7%	34.1%	3.6%	-1.6%	-4.5%	1.8%	-28.7%	13.9%	-10.4%	12.0%	--	-0.7%
<b>Queens</b>												
2013	27	148	269	242	19	477	285	248	262	153	0	2,130
2014	28	221	301	224	12	478	253	275	321	125	0	2,238
% Change	3.7%	49.3%	11.9%	-7.4%	-36.8%	0.2%	-11.2%	10.9%	22.5%	-18.3%	--	5.1%
<b>Staten Island</b>												
2013	9	49	62	63	5	90	101	73	67	55	0	574
2014	6	62	72	50	6	96	101	101	79	37	0	610
% Change	-33.3%	26.5%	16.1%	-20.6%	20.0%	6.7%	0.0%	38.4%	17.9%	-32.7%	--	6.3%
<b>OSI</b>												
2013	13	13	25	48	6	70	32	27	82	60	1	377
2014	24	17	19	38	6	61	29	24	90	70	0	378
% Change	84.6%	30.8%	-24.0%	-20.8%	0.0%	-12.9%	-9.4%	-11.1%	9.8%	16.7%	--	0.3%
<b>Other</b>												
2013	7	18	73	29	0	127	18	35	43	41	0	391
2014	7	8	71	44	0	111	20	32	36	42	0	371
% Change	0.0%	-55.6%	-2.7%	51.7%	--	-12.6%	11.1%	-8.6%	-16.3%	2.4%	--	-5.1%
<b>Citywide</b>												
2013	177	812	1,463	1,302	116	2,435	1,478	1,301	1,858	809	4	11,755
2014	176	1,053	1,569	1,265	97	2,405	1,299	1,443	1,975	742	3	12,027
% Change	-0.6%	29.7%	7.2%	-2.8%	-16.4%	-1.2%	-12.1%	10.9%	6.3%	-8.3%	-25.0%	2.3%

**Figure 3: SCR Allegations, JUL 14 – SEP 14**



Total Allegations = 32,081

**TABLE 3 - SCR Allegations, JUL 13 - SEP 13 and JUL 14 - SEP 14**

Year	Physical Abuse	Educational Neglect	Lack of Medical Care	Neglect	Psychological Abuse	Sexual Abuse	Other	Total
<b>Bronx</b>								
2013	894	205	324	6,192	53	214	1,485	9,367
2014	959	240	324	6,328	33	225	1,504	9,613
% Change	7.3%	17.1%	0.0%	2.2%	-37.7%	5.1%	1.3%	2.6%
<b>Brooklyn</b>								
2013	1,025	194	325	6,153	38	221	1,574	9,530
2014	860	193	278	5,949	28	217	1,365	8,890
% Change	-16.1%	-0.5%	-14.5%	-3.3%	-26.3%	-1.8%	-13.3%	-6.7%
<b>Manhattan</b>								
2013	384	67	153	2474	23	104	620	3,825
2014	340	74	136	2414	23	80	522	3,589
% Change	-11.5%	10.4%	-11.1%	-2.4%	0.0%	-23.1%	-15.8%	-6.2%
<b>Queens</b>								
2013	641	81	179	3,582	52	128	1,041	5,704
2014	615	80	156	3,650	25	116	893	5,535
% Change	-4.1%	-1.2%	-12.8%	1.9%	-51.9%	-9.4%	-14.2%	-3.0%
<b>Staten Island</b>								
2013	147	29	25	1,231	11	32	341	1,816
2014	152	24	36	1,280	7	35	362	1,896
% Change	3.4%	-17.2%	44.0%	4.0%	-36.4%	9.4%	6.2%	4.4%
<b>OSI</b>								
2013	203	6	39	1,070	2	46	129	1,495
2014	259	10	53	1,107	11	51	152	1,643
% Change	27.6%	66.7%	35.9%	3.5%	450.0%	10.9%	17.8%	9.9%
<b>Other</b>								
2013	103	19	29	671	12	27	251	1,112
2014	95	10	27	572	3	30	178	915
% Change	-7.8%	-47.4%	-6.9%	-14.8%	-75.0%	11.1%	-29.1%	-17.7%
<b>Citywide</b>								
2013	3,397	601	1,074	21,373	191	772	5,441	32,849
2014	3,280	631	1,010	21,300	130	754	4,976	32,081
% Change	-3.4%	5.0%	-6.0%	-0.3%	-31.9%	-2.3%	-8.5%	-2.3%

TABLE 4 - Purchased Preventive Cases  
Opened and Closed  
January 2012 to September 2014

Month	Opened Cases	Closed Cases
<b>2012</b>		
Jan-12	870	629
Feb-12	889	835
Mar-12	944	991
Apr-12	997	870
May-12	1,117	979
Jun-12	965	869
Jul-12	853	979
Aug-12	917	1,007
Sep-12	727	900
Oct-12	875	915
Nov-12	738	702
Dec-12	938	871
<b>2013</b>		
Jan-13	960	884
Feb-13	873	916
Mar-13	962	1,171
Apr-13	940	988
May-13	864	1,337
Jun-13	863	780
Jul-13	868	1,004
Aug-13	802	1,084
Sep-13	844	724
Oct-13	933	765
Nov-13	901	685
Dec-13	1,106	552
<b>2014</b>		
Jan-14	983	640
Feb-14	987	679
Mar-14	1,146	874
Apr-14	1,074	896
May-14	1,042	888
Jun-14	976	762
Jul-14	1,050	1,077
Aug-14	944	943
Sep-14	987	705

**Table 5 - Referrals to Purchased Preventive Services by Source  
January 2012 to September 2014**

Month	Total Referrals	Division of Child Protection	Foster Care Agencies	PPRS Transfer	School	Self	Other Sources*
<b>2012</b>							
Jan-12	1,431	66.5%	0.7%	8.5%	3.6%	3.8%	17.0%
Feb-12	1,043	78.2%	1.1%	9.0%	1.9%	6.7%	3.1%
Mar-12	1,525	73.6%	0.9%	6.0%	1.8%	3.9%	13.8%
Apr-12	1,370	72.8%	1.0%	9.4%	1.2%	4.2%	11.4%
May-12	1,463	70.9%	1.0%	7.6%	1.1%	4.4%	15.0%
Jun-12	1,279	73.8%	0.5%	5.9%	1.0%	4.7%	14.2%
Jul-12	1,308	77.4%	1.2%	7.0%	0.3%	3.7%	10.5%
Aug-12	1,391	74.0%	0.9%	11.7%	0.3%	2.9%	10.2%
Sep-12	1,110	70.5%	1.9%	9.6%	1.2%	5.0%	11.9%
Oct-12	1,159	61.1%	1.4%	12.6%	2.7%	4.9%	17.3%
Nov-12	1,106	67.0%	1.0%	9.9%	2.2%	4.7%	15.3%
Dec-12	1,206	68.7%	0.8%	5.8%	2.7%	5.6%	16.4%
CY 2012	15,391	71.3%	1.0%	8.5%	1.6%	4.5%	13.1%
<b>2013</b>							
Jan-13	1,474	74.1%	1.2%	7.3%	1.2%	3.7%	12.5%
Feb-13	1,308	75.8%	1.1%	8.0%	1.6%	2.9%	10.6%
Mar-13	1,270	73.5%	1.2%	6.7%	2.4%	3.9%	12.3%
Apr-13	1,421	77.9%	0.8%	7.4%	0.9%	3.0%	10.1%
May-13	1,320	68.4%	0.5%	10.2%	1.5%	3.8%	15.5%
Jun-13	953	69.2%	1.2%	9.4%	2.6%	5.0%	12.6%
Jul-13	1,014	66.3%	1.9%	14.4%	1.6%	3.9%	11.9%
Aug-13	1,212	70.5%	0.7%	11.8%	0.7%	4.7%	11.6%
Sep-13	1,262	64.0%	2.1%	11.3%	1.7%	6.7%	14.2%
Oct-13	1,319	61.0%	1.1%	9.0%	2.9%	7.5%	18.5%
Nov-13	1,249	55.9%	1.6%	10.5%	4.6%	9.2%	18.3%
Dec-13	1,464	62.2%	1.2%	8.2%	2.3%	9.2%	17.0%
CY 2013	15,266	68.3%	1.2%	9.4%	2.0%	5.3%	13.8%
<b>2014</b>							
Jan-14	1,537	70.0%	1.2%	6.6%	2.3%	5.8%	14.2%
Feb-14	1,334	69.7%	0.8%	8.4%	1.7%	5.5%	13.9%
Mar-14	1,612	70.0%	1.4%	8.6%	1.6%	5.3%	13.1%
Apr-14	1,525	70.2%	0.9%	7.6%	2.1%	3.7%	15.4%
May-14	1,580	74.4%	0.7%	8.3%	1.4%	5.2%	10.0%
Jun-14	1,550	78.6%	1.2%	6.3%	1.2%	3.2%	9.4%
Jul-14	1,659	79.6%	1.5%	6.7%	0.4%	4.2%	7.6%
Aug-14	1,395	72.2%	1.6%	10.8%	0.3%	4.9%	10.3%
Sep-14	1,597	49.4%	1.5%	7.6%	0.3%	4.5%	36.8%

\*Other Community Sources includes the Department of Homeless Services, Family Court, FAP, Hospitals and Medical facilities, the NYC Housing Authority, PINS/DAS, Probation, and Sponsor Agencies.