

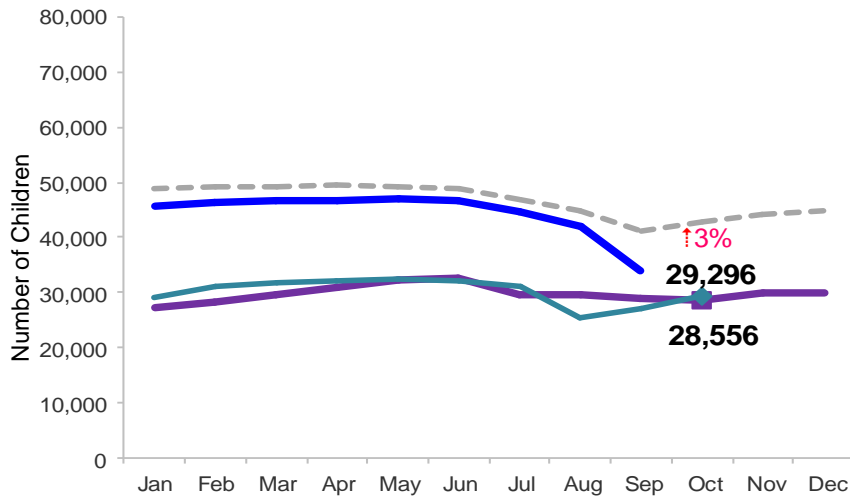


# Flash

November 2014

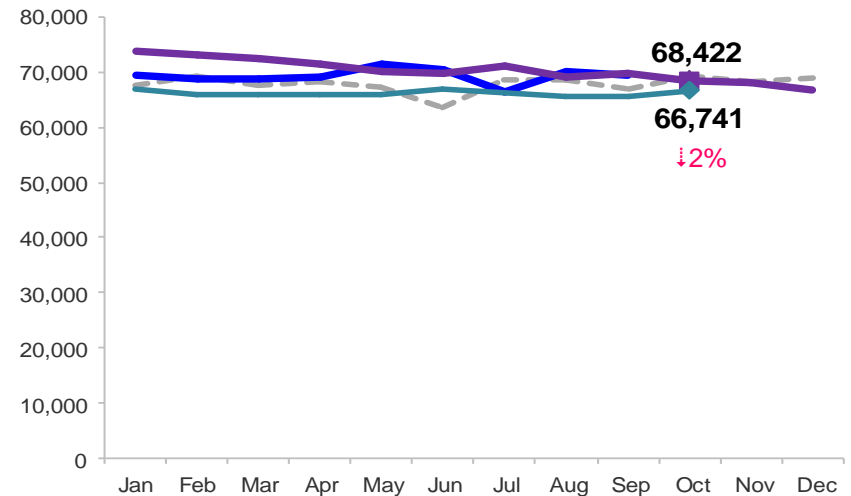
## Children Enrolled in Contracted EarlyLearn Programs

January 2011 – October 2014 (End of Month)



## Children Using Vouchers for Child Care

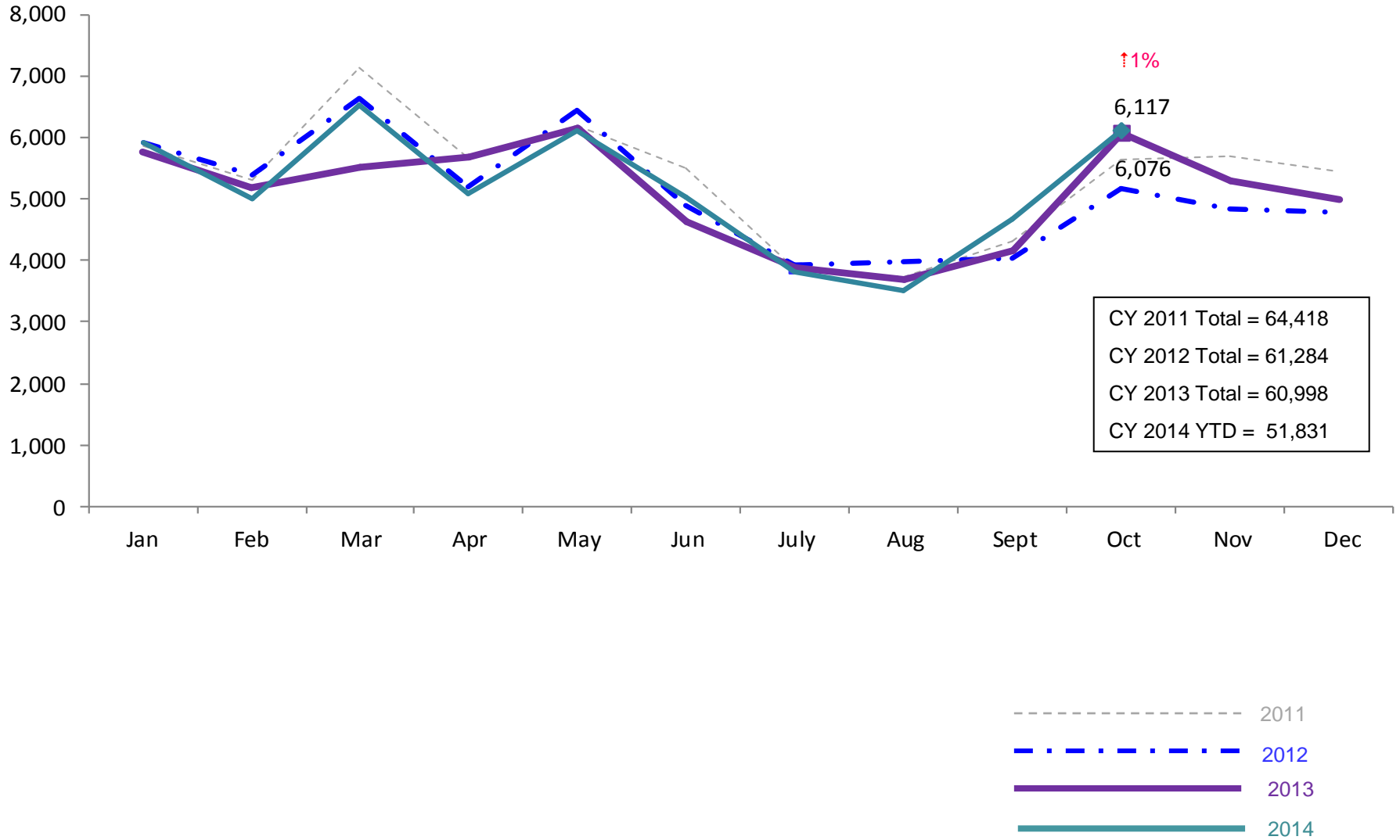
January 2011 – October 2014 (End of Month)



Notes: 1) Beginning October 1, 2012 ACS converted its early care and education system to a new model, EarlyLearn NYC. Enrollment data for the transitional months of October – December 2012 are not available because contractors were in the midst of implementing the data collection systems. 2) Percentage change is October 2013 vs. October 2014.

### SCR Intakes

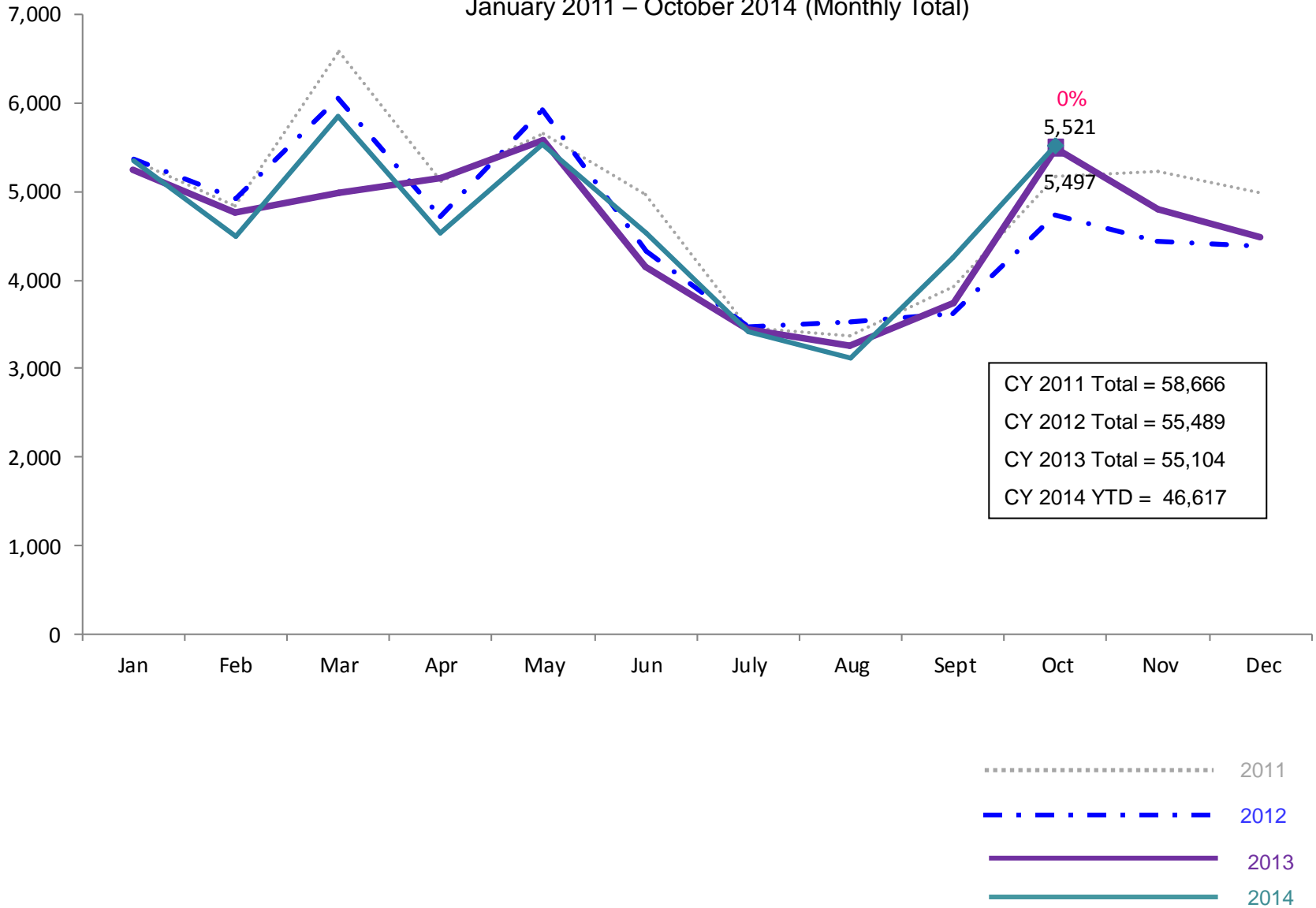
January 2011 – October 2014 (Monthly Total)



Note: Percentage change is October 2013 vs. October 2014.  
 See Pages 30 through 35 of the Appendix for supporting data.

### SCR Consolidated Investigations

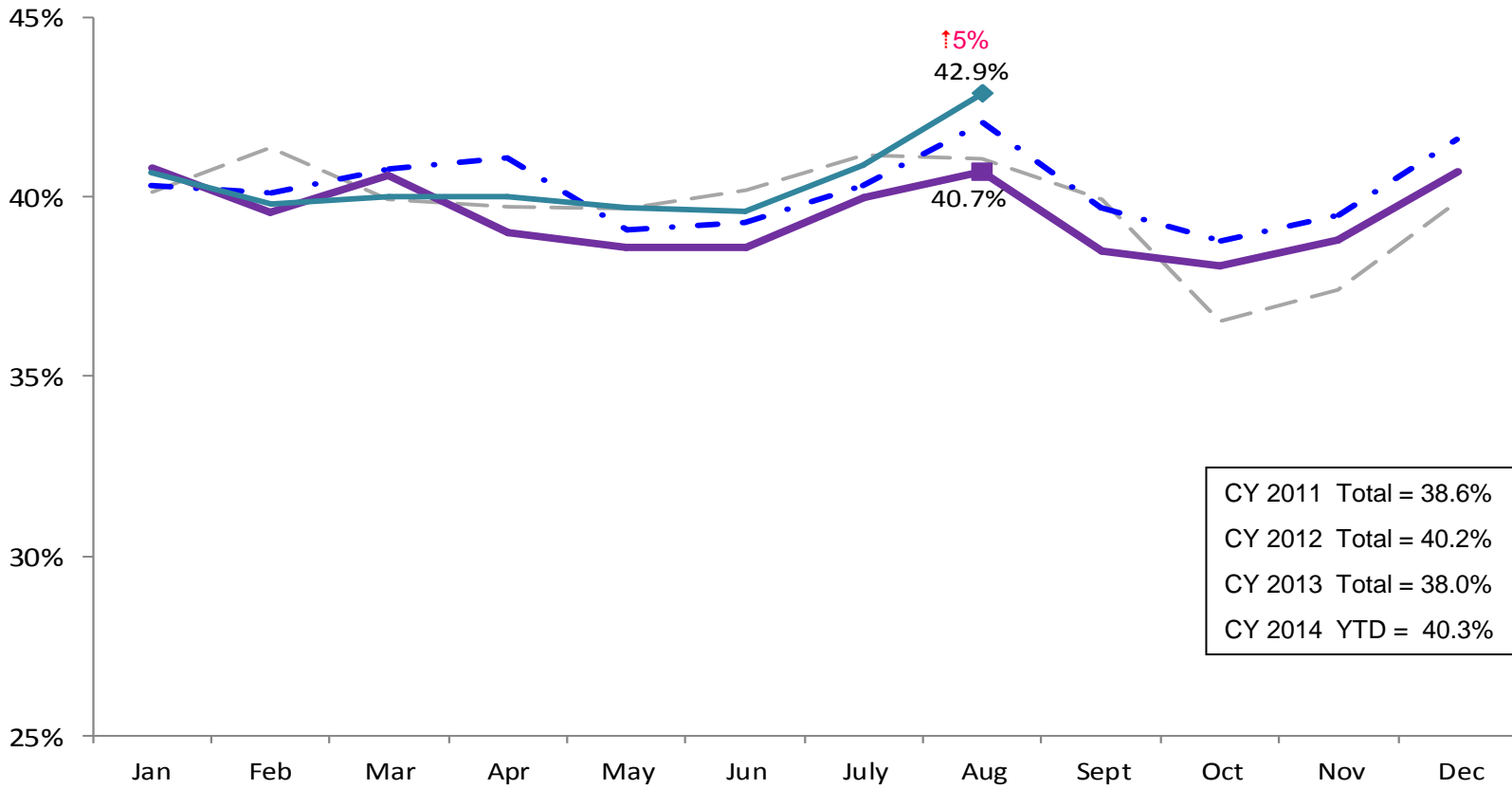
January 2011 – October 2014 (Monthly Total)



Note: Percentage change is October 2013 vs. October 2014.

### SCR Investigation Indication Rate

January 2011 – August 2014



CY 2011 Total = 38.6%  
 CY 2012 Total = 40.2%  
 CY 2013 Total = 38.0%  
 CY 2014 YTD = 40.3%

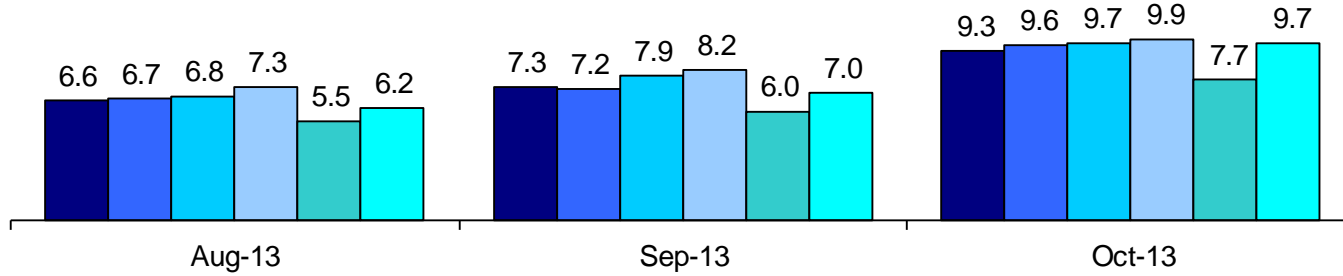


Note: Percentage change is August 2013 vs. August 2014.

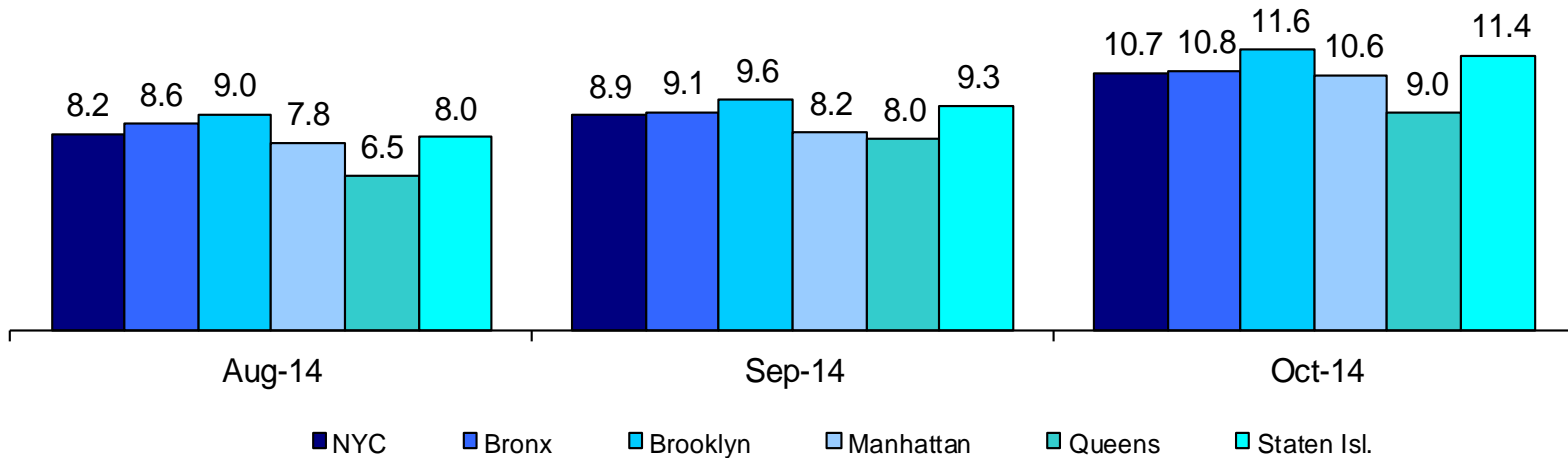
### Average P/D Combined Caseload\*

August 2013 – October 2013 & August 2014 – October 2014

2013



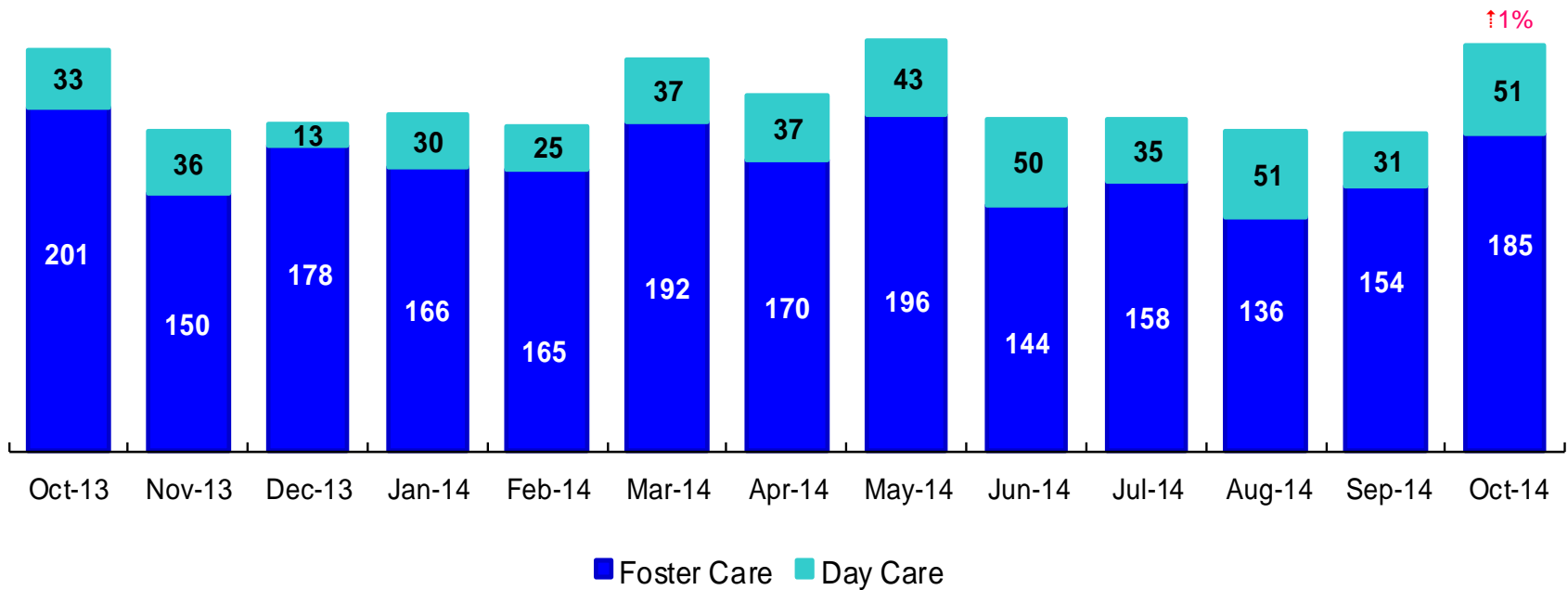
2014



\* Caseloads are of protective/diagnostic caseworkers only and exclude the caseloads carried by Level I and Level II Supervisors. 6

### OSI Investigations by Program

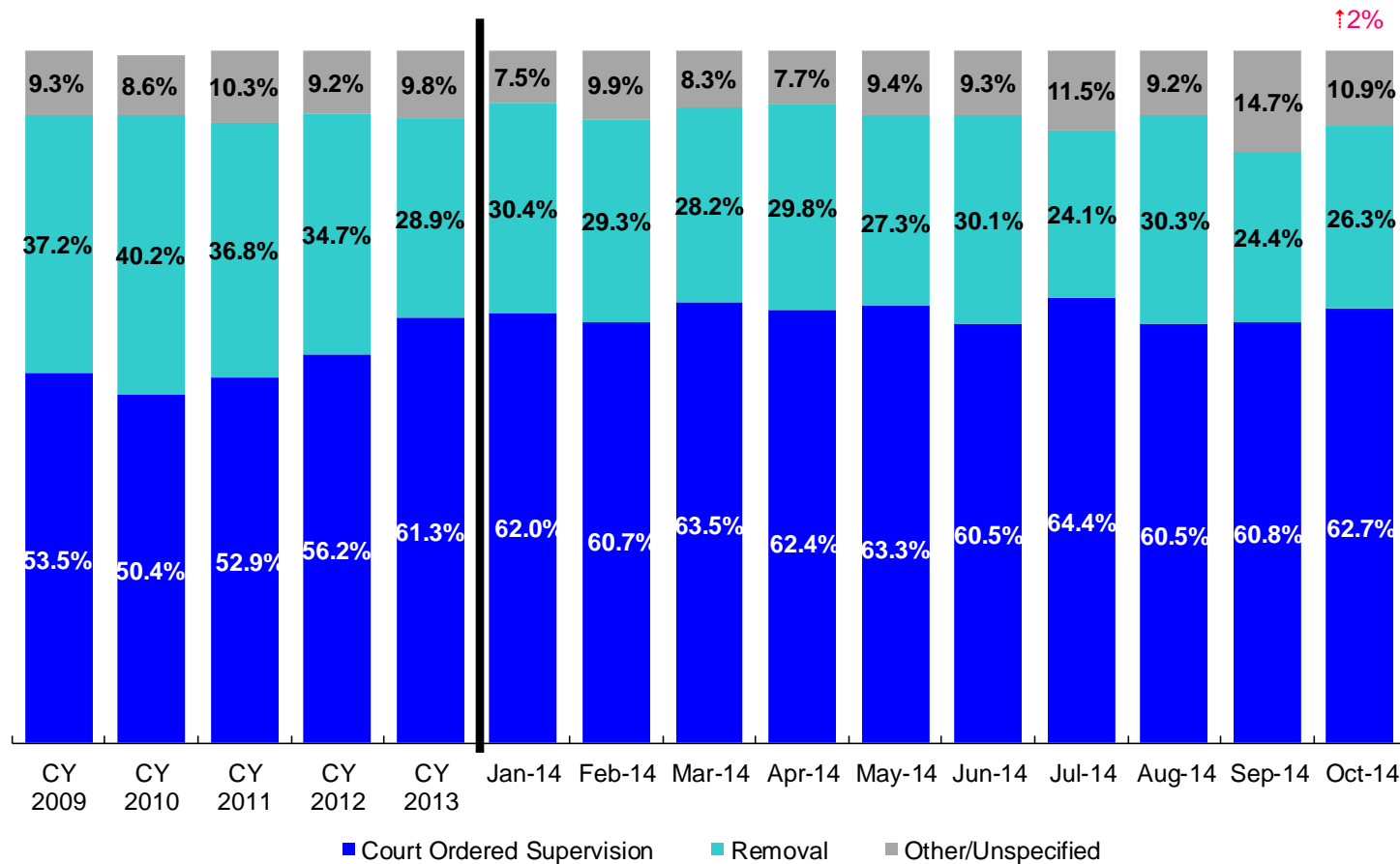
October 2013 – October 2014



	Oct 2013	Nov 2013	Dec 2013	Jan 2014	Feb 2014	Mar 2014	Apr 2014	May 2014	Jun 2014	July 2014	Aug 2014	Sep 2014	Oct 2014
Number of Investigations	234	186	191	196	190	229	207	239	194	193	187	185	236

Note: Percentage change is October 2013 vs. October 2014.

Article 10 Total Filings & Filing Outcomes, CY 2009 - CY 2013 and January – October 2014

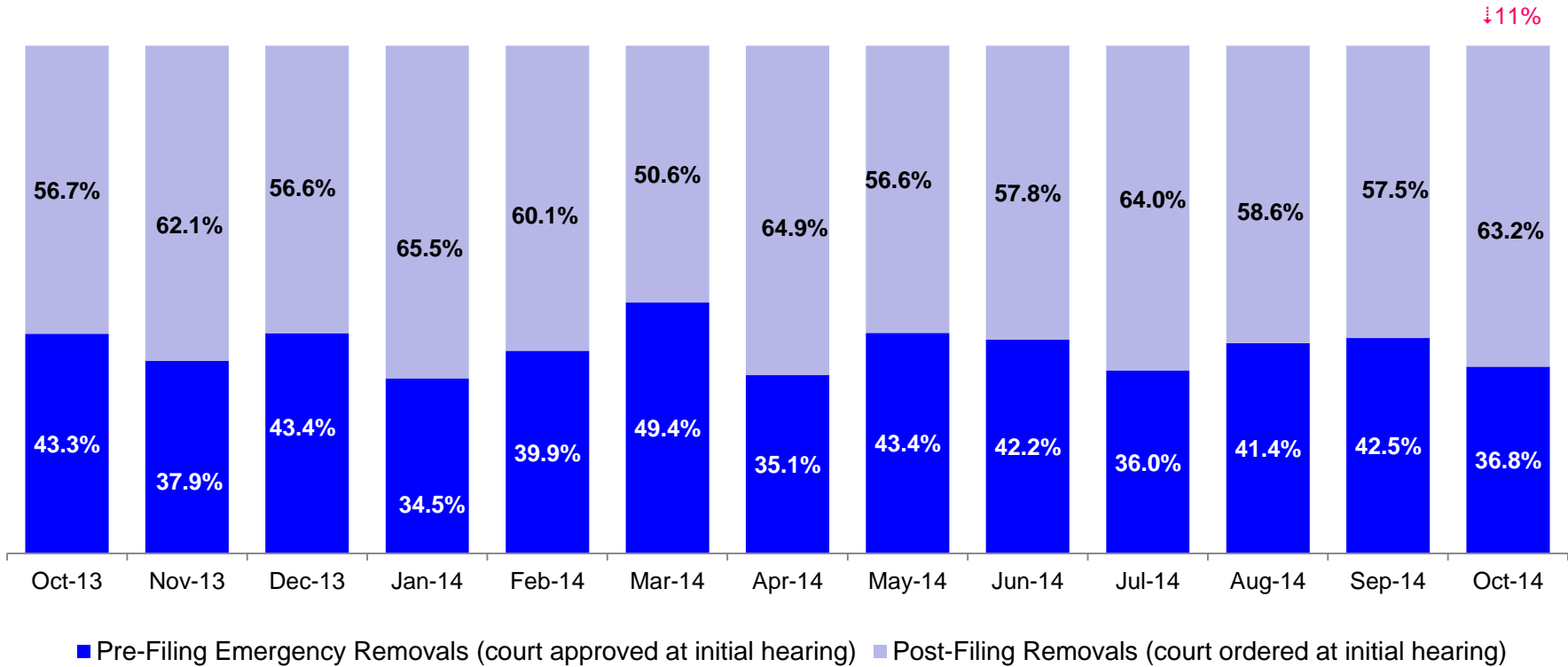


	CY 2009	CY 2010	CY 2011	CY 2012	CY 2013	Jan 2014	Feb 2014	Mar 2014	Apr 2014	May 2014	Jun 2014	Jul 2014	Aug 2014	Sep 2014	Oct 2014
Art.10 Filings	11,568	10,093	9,596	8,913	9,318	743	828	905	801	978	826	713	749	733	877

Notes: 1) The category “Other/Unspecified” includes released with no supervision, no order issued and no outcome specified. Outcomes of cases heard the next day are not captured in this report. 2) Percentage change is October 2013 vs. October 2014.



### Article 10 Filing Removals, October 2013 – October 2014



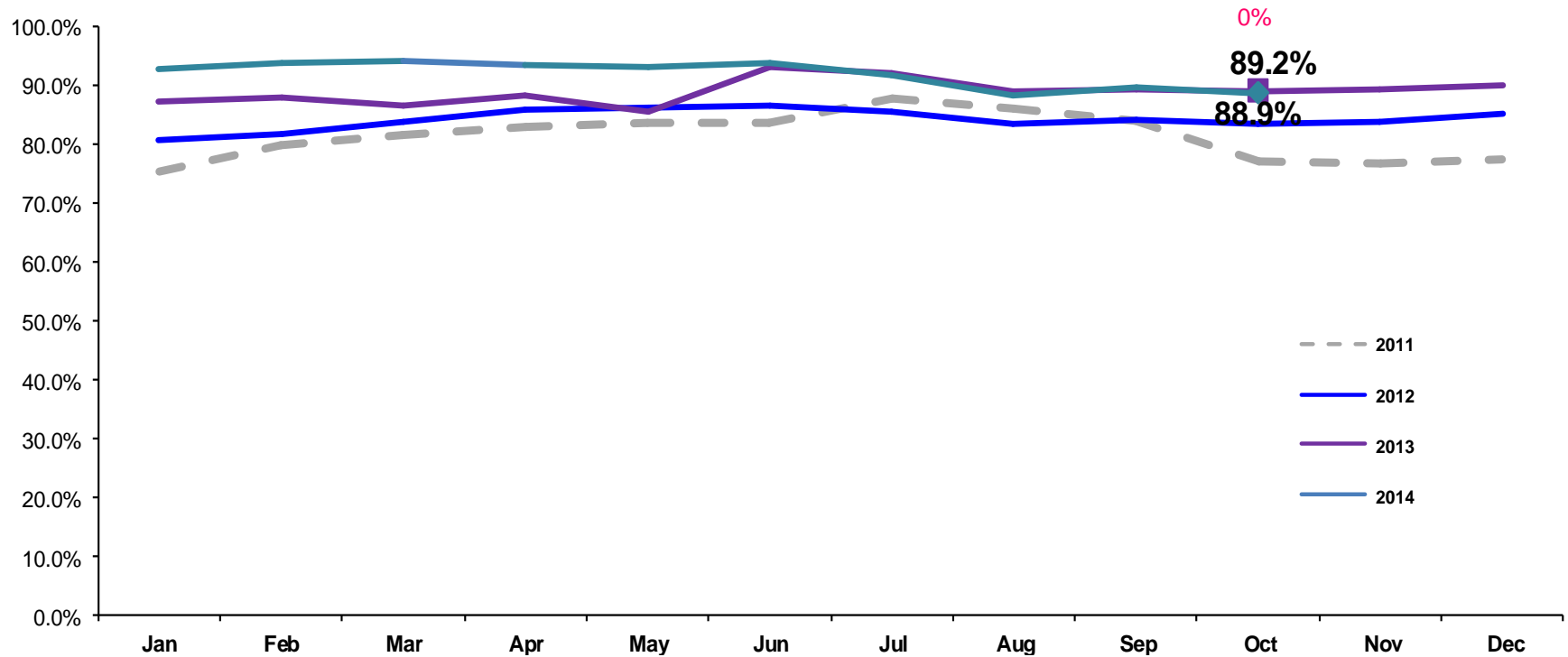
	Oct 2013	Nov 2013	Dec 2013	Jan 2014	Feb 2014	Mar 2014	Apr 2014	May 2014	Jun 2014	Jul 2014	Aug 2014	Sep 2014	Oct 2014
Number of Removals	261	224	212	226	243	255	239	267	249	172	227	179	231

Note: Percentage change is October 2013 vs. October 2014.

## PPRS Utilization Rate

January 2011 – October 2014 (End of Month)

General Preventive

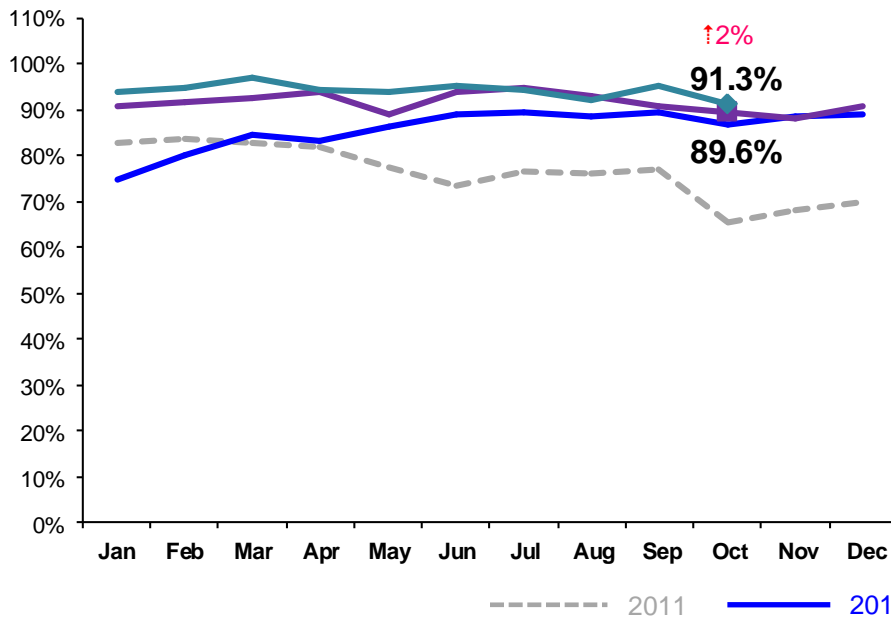


Notes: 1) Beacons programs are included in the GP utilization rates. 2) During February - June 2011 GP rates were adjusted by excluding programs in the process of being closed. GP rates were also adjusted during July – September 2011 by excluding newly opened programs. 3) During June-October 2013 GP programs in the process of converting to EBMs were excluded from the GP utilization statistics. 4) Percentage change is October 2013 vs. October 2014.

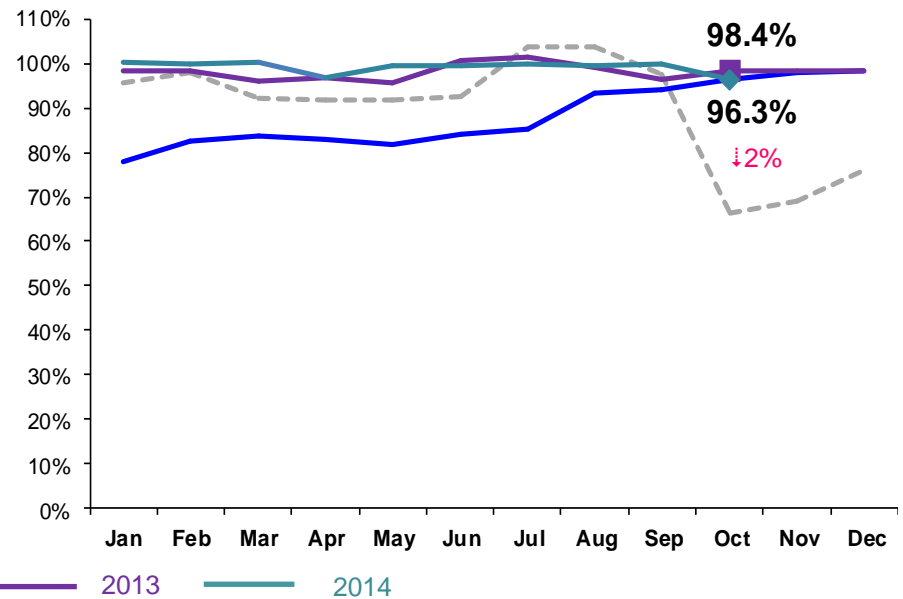
## PPRS Utilization Rate

January 2011 – October 2014 (End of Month)

Family Rehabilitation Program/Family Treatment Rehabilitation



Medically Fragile

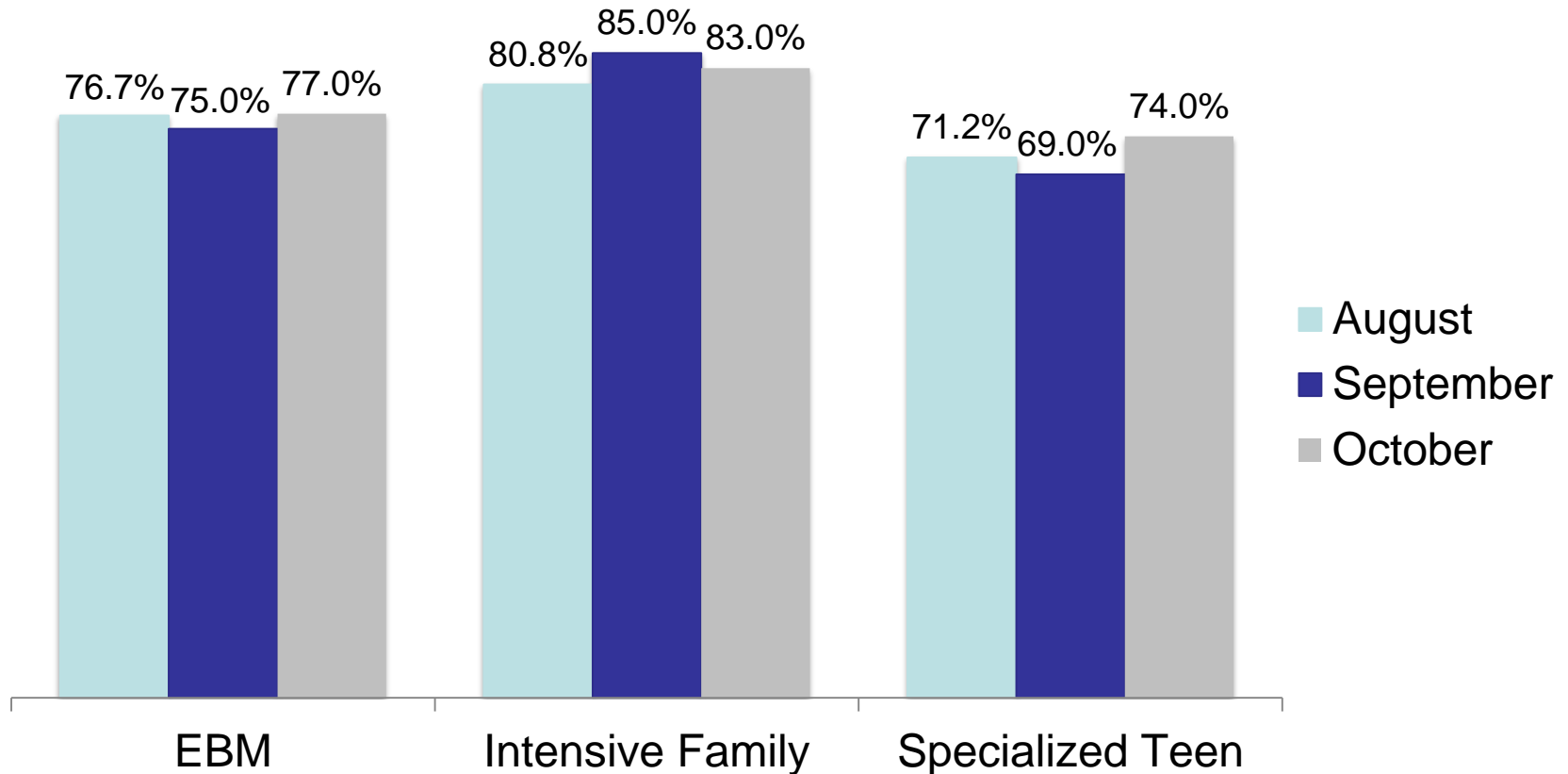


Notes: 1) During February - June 2011 FRP rates were adjusted by excluding programs in the process of being closed. FT/R rates were also adjusted during July – September 2011 by excluding newly opened programs. As of October 2011 all FT/R programs are included in the FT/R utilization rates. 2) Beginning July 2011 Family Treatment Rehabilitation programs replaced the Family Rehabilitation programs. 3) Beginning December 2011 the NYF Family Services for deaf Children and Adults program is no longer included in the medically fragile utilization rate. 4) During June -October 2013 FTR programs in the process of converting to EBMs were excluded from the FTR utilization statistics. 5) Percentage change is October 2013 vs. October 2014.

**PPRS Utilization Rate**

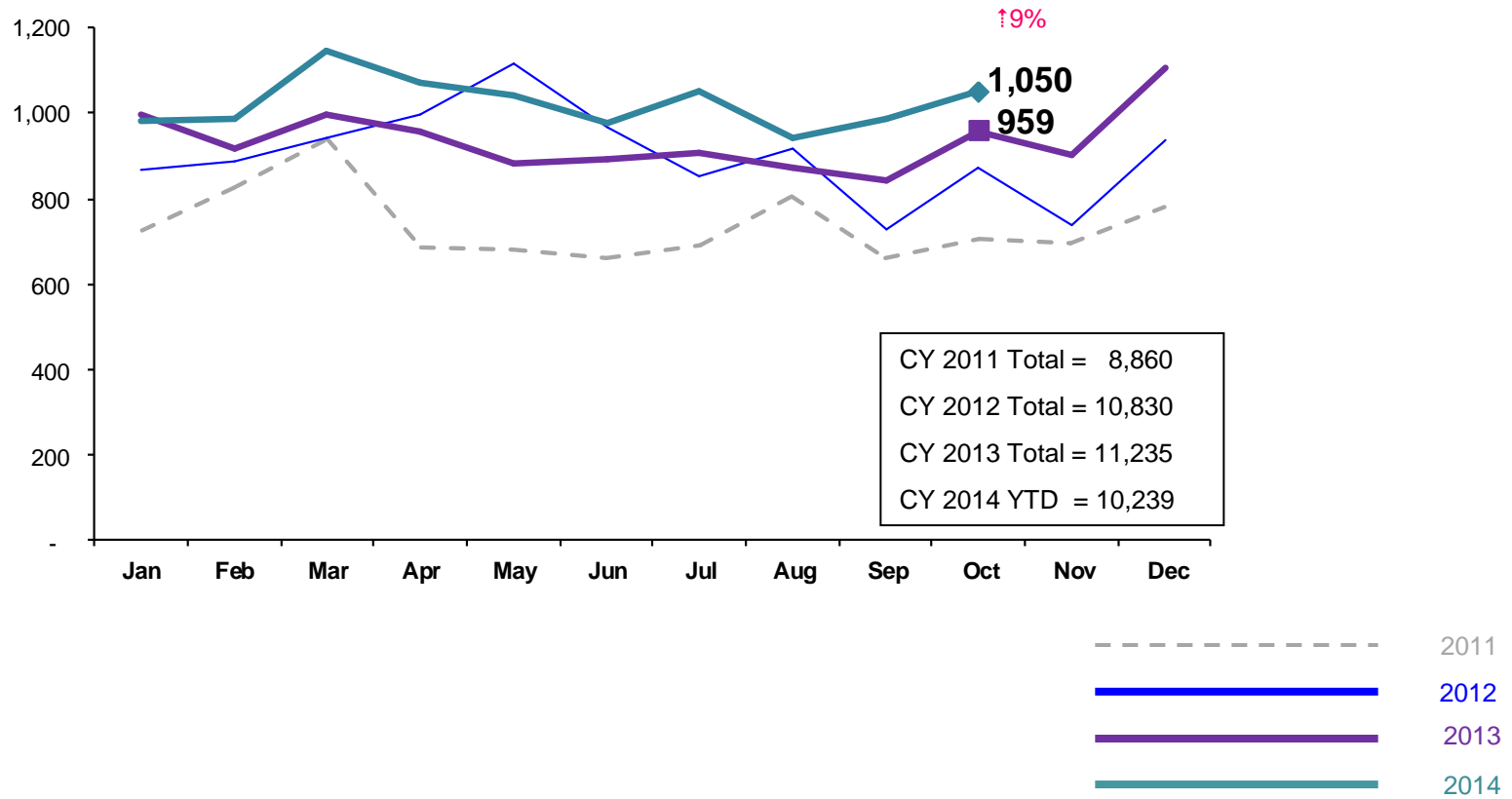
August – October 2014 (End of Month)

EBM, Intensive Family and Specialized Teen



### New Preventive Cases\*

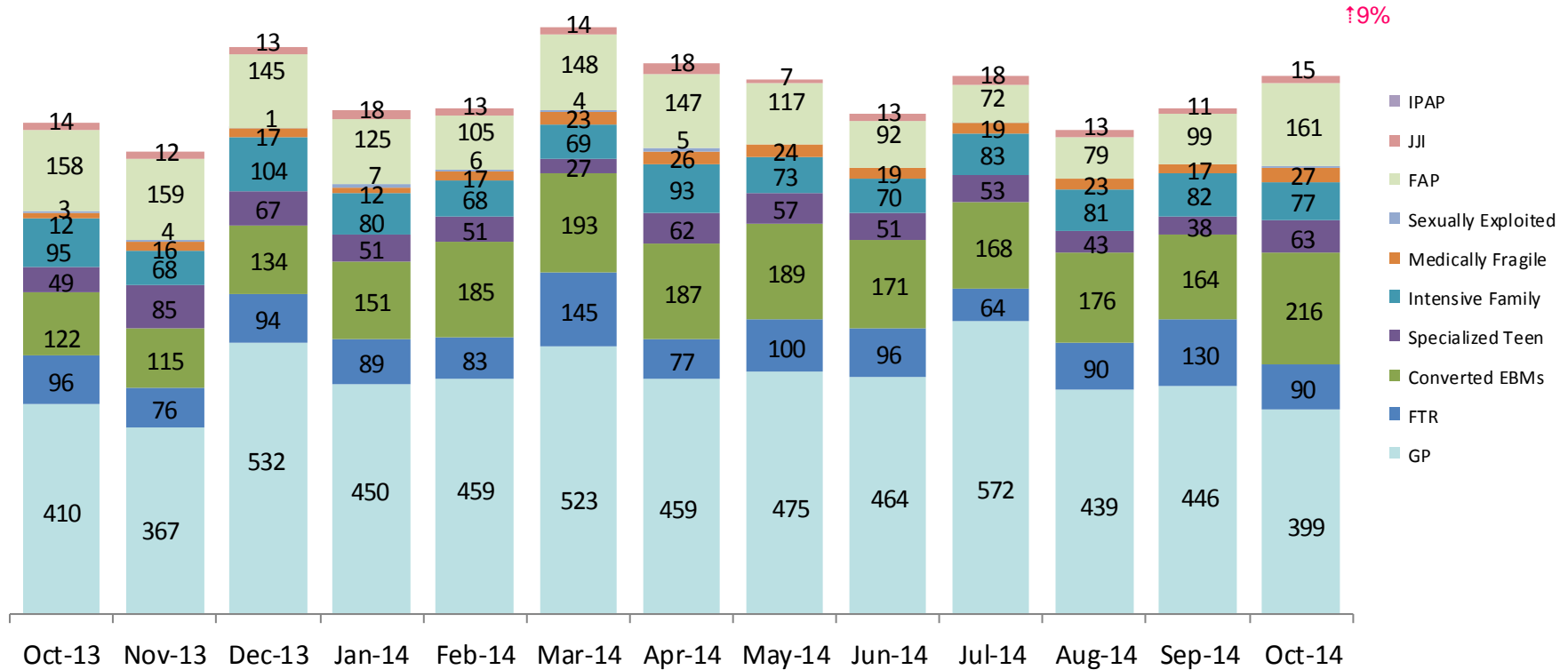
January 2011 – October 2014



\*Notes: 1) New preventive cases do not include cases transferred from one preventive program to another. 2) Percentage change is October 2013 vs. October 2014. 3) See Pages 36 and 37 of the Appendix for supporting data.

### New Preventive Cases\* by Program Type

October 2013 – October 2014

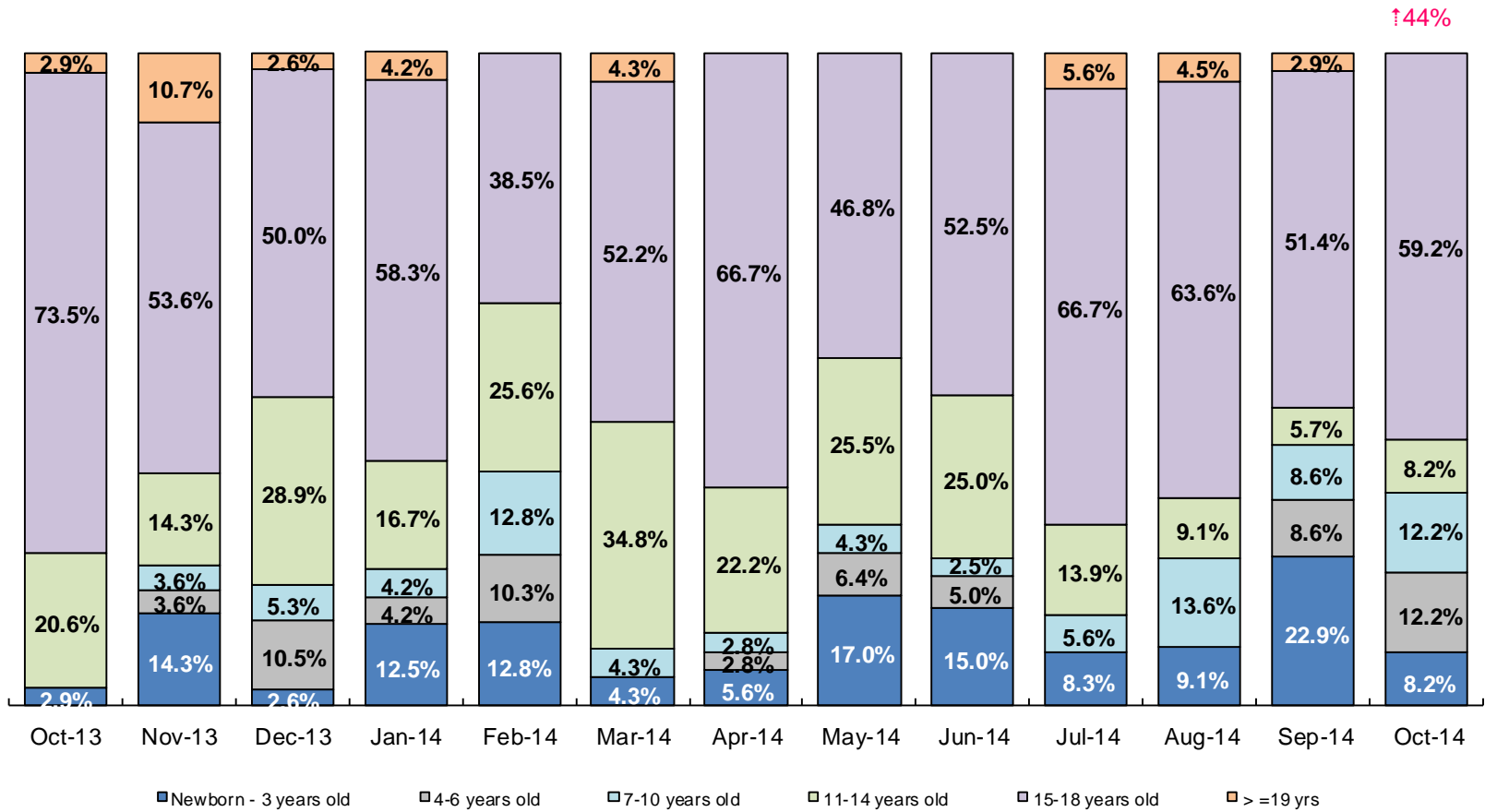


	Oct 2013	Nov 2013	Dec 2013	Jan 2014	Feb 2014	Mar 2014	Apr 2014	May 2014	Jun 2014	Jul 2014	Aug 2014	Sep 2014	Oct 2014
Number of New Preventive Cases	959	902	1,107	983	987	1,146	1,074	1,042	976	1,050	944	987	1,050

Notes: 1) New preventive cases do not include cases transferred from one preventive program to another. 2) Percentage change is October 2013 vs. October 2014.

### Children's Center Population by Age

October 2013 – October 2014

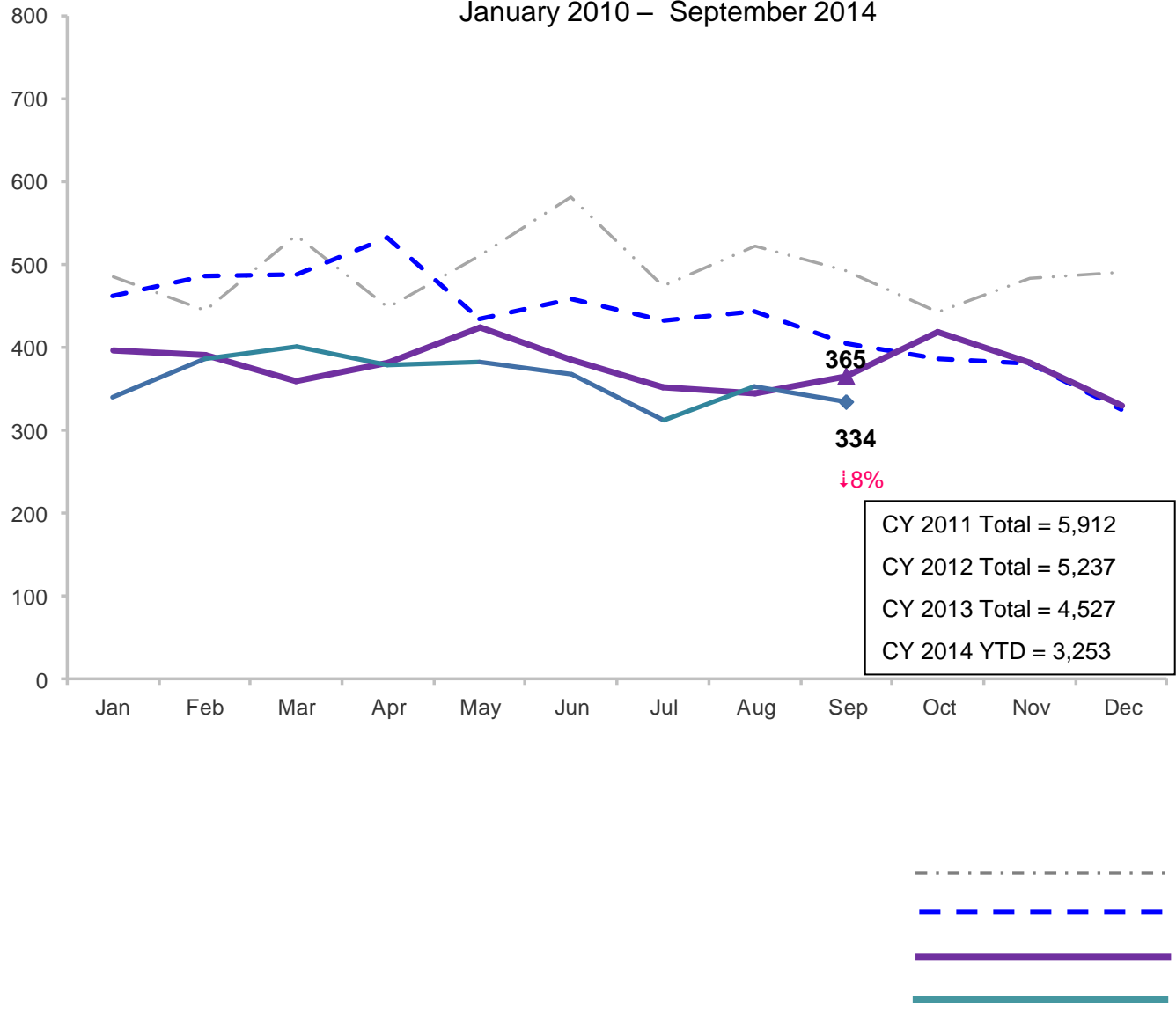


	Oct 2013	Nov 2013	Dec 2013	Jan 2014	Feb 2014	Mar 2014	Apr 2014	May 2014	Jun 2014	Jul 2014	Aug 2014	Sep 2014	Oct 2014
Number of Children	34	28	38	24	39	23	36	47	40	36	22	35	49

Note: Percentage change is October 2013 vs. October 2014.

### Total Monthly Placements

January 2010 – September 2014

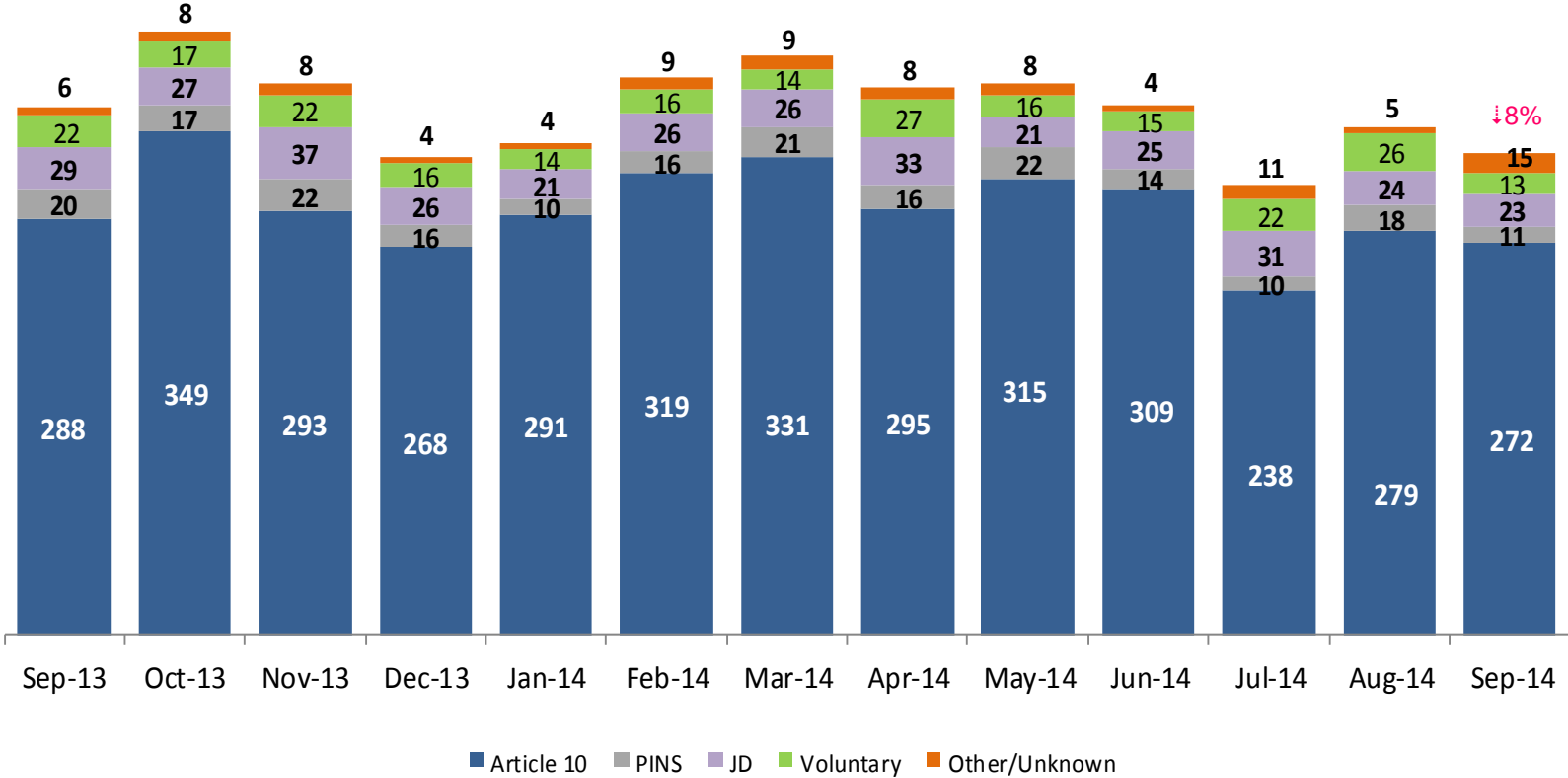


Note: Percentage change is September 2013 vs. September 2014.



### Reason for Initial Placements into Foster Care

September 2013 – September 2014

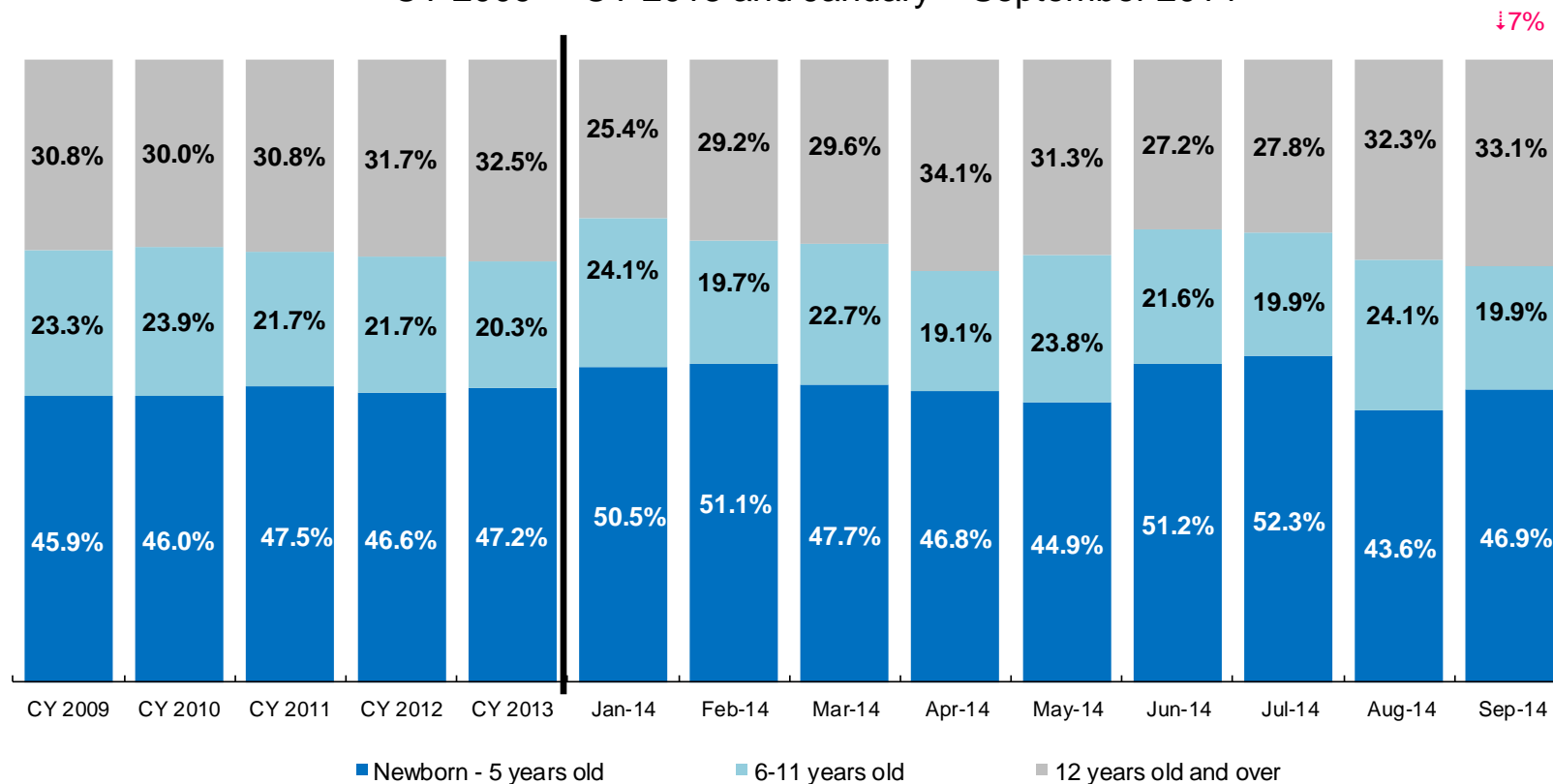


	Sep 2013	Oct 2013	Nov 2013	Dec 2013	Jan 2014	Feb 2014	Mar 2014	April 2014	May 2014	Jun 2014	Jul 2014	Aug 2014	Sep 2014
Number of Placements	365	418	382	330	340	386	401	379	382	367	312	352	334

Note: Percentage change is September 2013 vs. September 2014.

### Placements\* by Age

CY 2009 – CY 2013 and January – September 2014

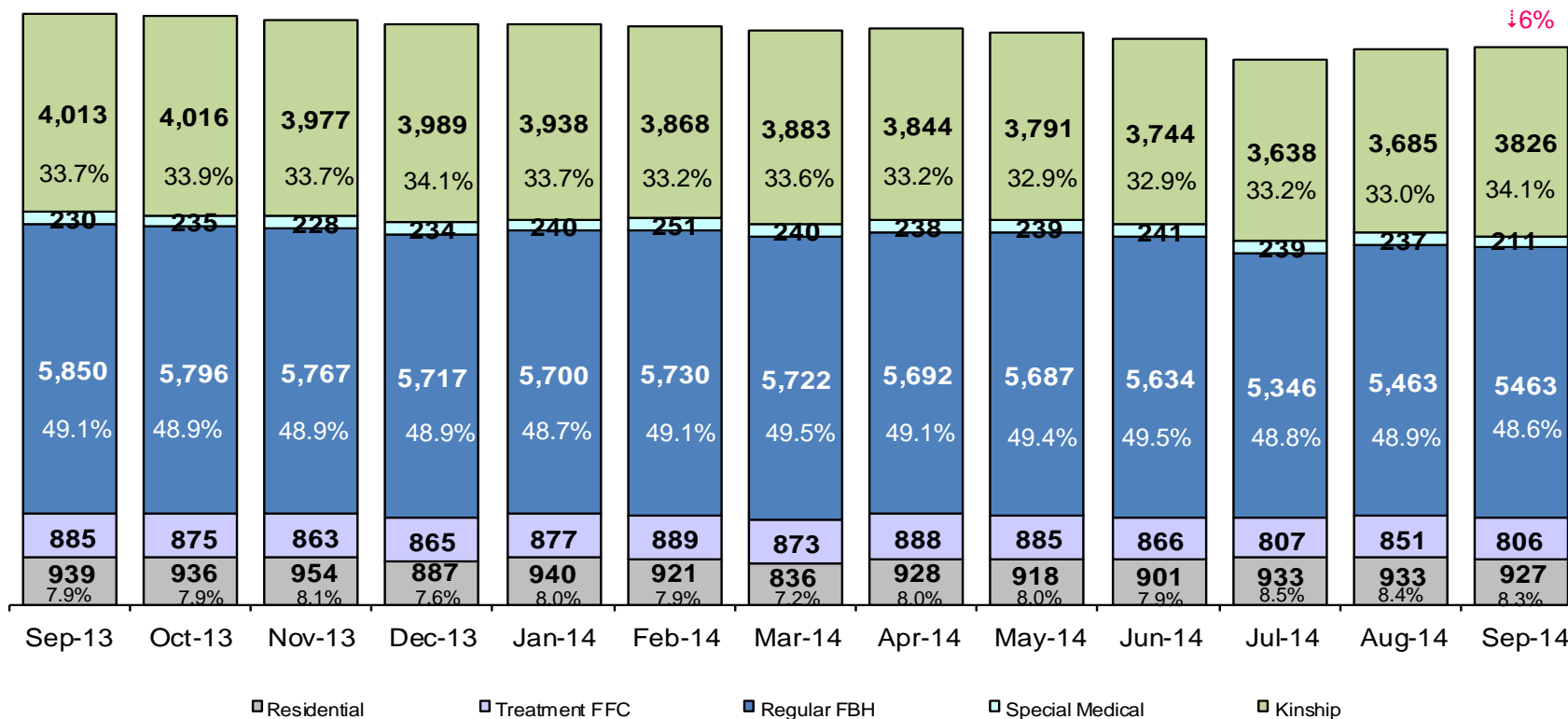


	CY 2008	CY 2009	CY 2010	CY 2011	CY 2012	CY 2013	Jan 2014	Feb 2014	Mar 2014	Apr 2014	May 2014	Jun 2014	Jul 2014	Aug 2014	Sep 2014
Placements	4,764	5,657	5,842	4,941	4,823	4,170	319	360	375	346	361	342	281	328	311

\*Excludes JD placements.

Note: Percentage change is September 2013 vs. September 2014.

### Children in Foster Care\* September 2013 – September 2014 (end of month)

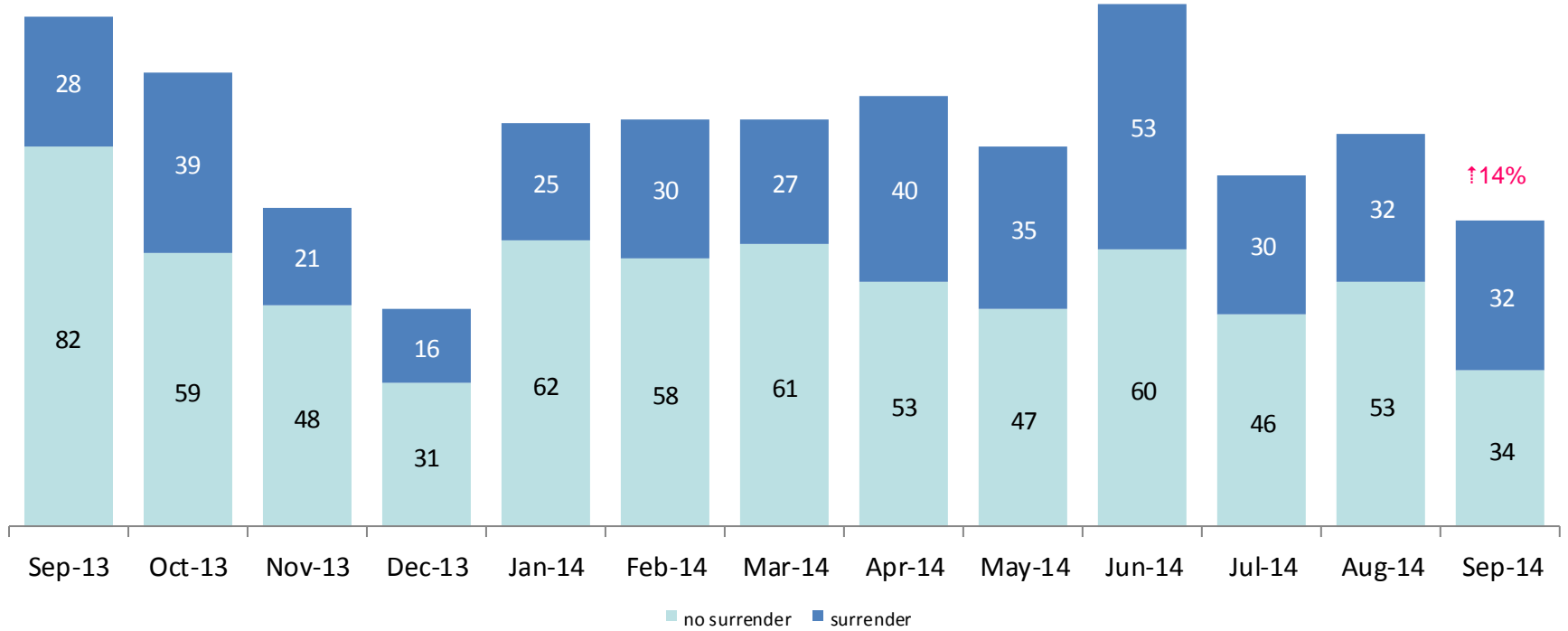


	Sep 2013	Oct 2013	Nov 2013	Dec 2013	Jan 2014	Feb 2014	Mar 2014	Apr 2014	May 2014	Jun 2014	Jul 2014	Aug 2014	Sep 2014
Number in Foster Care	11,917	11,858	11,789	11,692	11,695	11,659	11,554	11,590	11,520	11,386	10,963	11,169	11,233

\*Excludes JD placements and includes approximately 400 young children who are living in foster homes or residential care facilities with their mothers who are in foster care (8D children).

Note: Percentage change is September 2013 vs. September 2014.

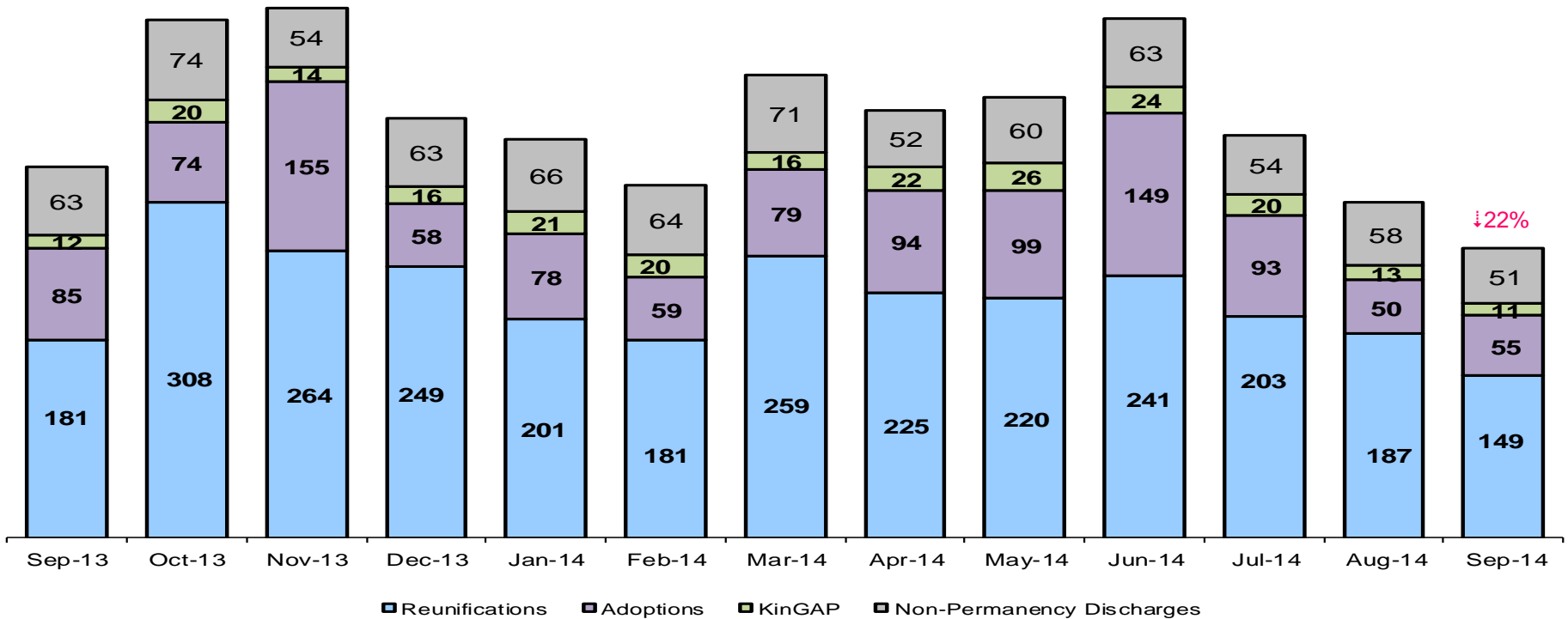
## Children Freed for Adoption, Surrender by at Least One Parent September 2013 – September 2014



	Sep 2013	Oct 2013	Nov 2013	Dec 2013	Jan 2014	Feb 2014	Mar 2014	Apr 2014	May 2014	Jun 2014	Jul 2014	Aug 2014	Sep 2014
Number Freed for Adoption	110	98	69	47	87	88	88	93	82	113	76	85	66

Note: Percentage change is for the number of children surrendered by at least on parent during September 2013 vs. September 2014.

## Permanency and Non-Permanency\* Discharges from Foster Care\*\* September 2013 – September 2014



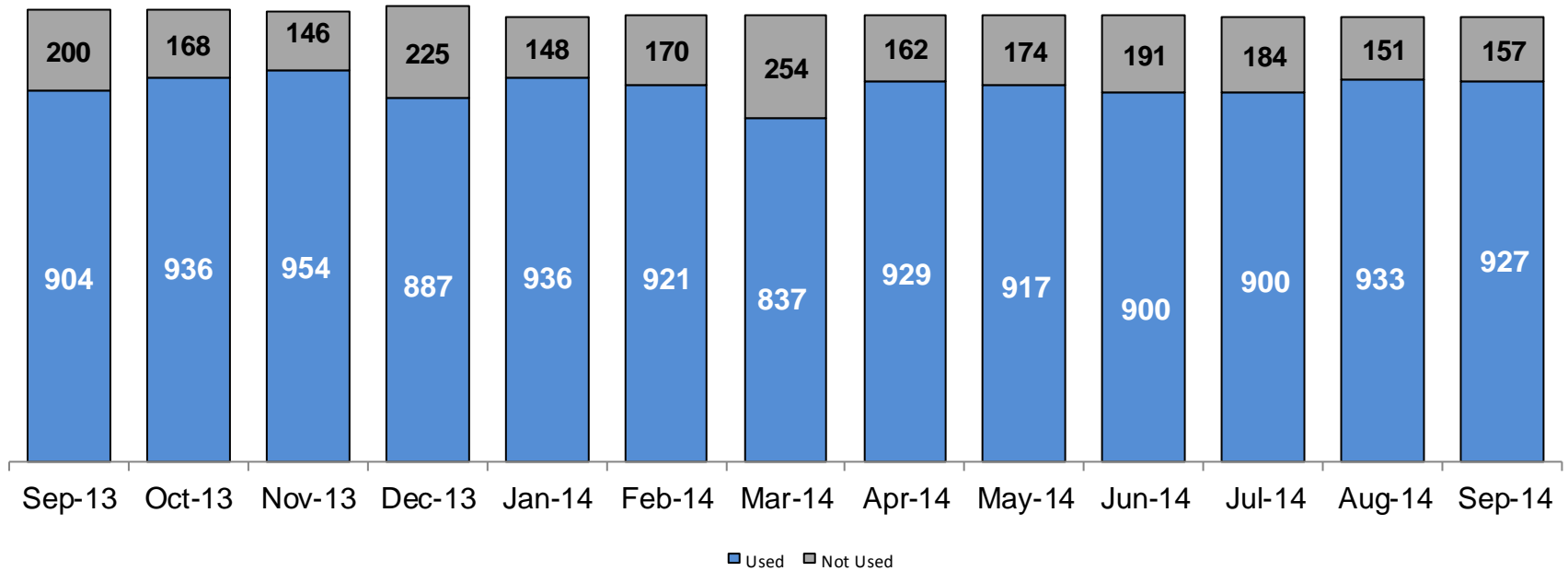
	Sep 2013	Oct 2013	Nov 2013	Dec 2013	Jan 2014	Feb 2014	Mar 2014	Apr 2014	May 2014	Jun 2014	Jul 2014	Aug 2014	Sep 2014
Number of Discharges	341	476	487	386	366	324	425	393	405	477	370	308	266

\*Non-permanency discharges include AWOL, APPLA as well as other discharge destinations such as mental institutions and correctional facilities and discharges with unspecified destinations.

\*\*Excludes discharges of youth who were in JD status at any time during their foster care spell.

Note: Percentage change is September 2013 vs. September 2014.

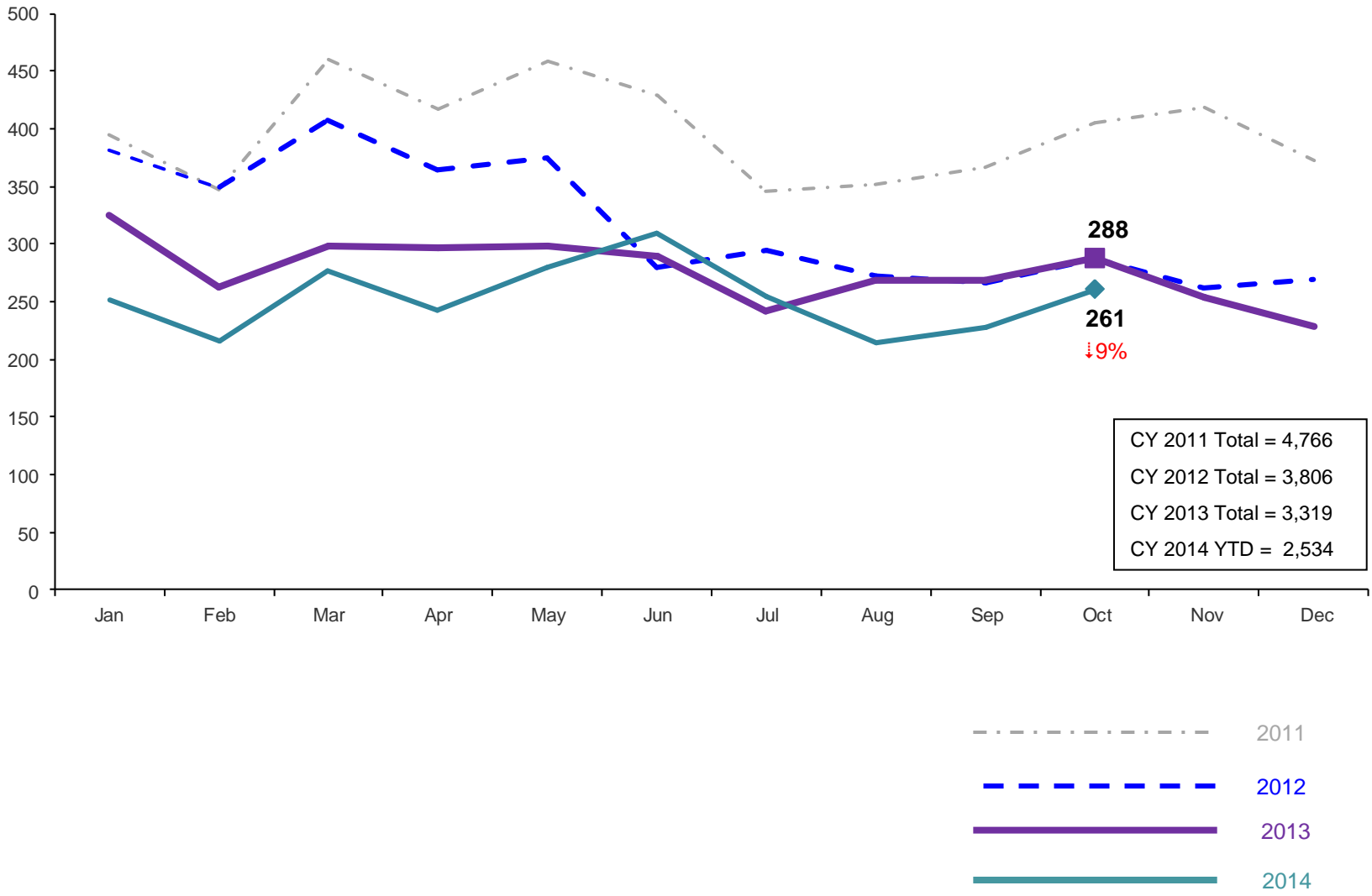
### Residential Care Capacity and Utilization, September 2013 – September 2014



	Sep 2013	Oct 2013	Nov 2013	Dec 2013	Jan 2014	Feb 2014	Mar 2014	Apr 2014	May 2014	Jun 2014	Jul 2014	Aug 2014	Sep 2014
Capacity	1,104	1,104	1,100	1,112	1,084	1,091	1,091	1,091	1,091	1,091	1,084	1,084	1,084

### Total Monthly Admissions to Detention

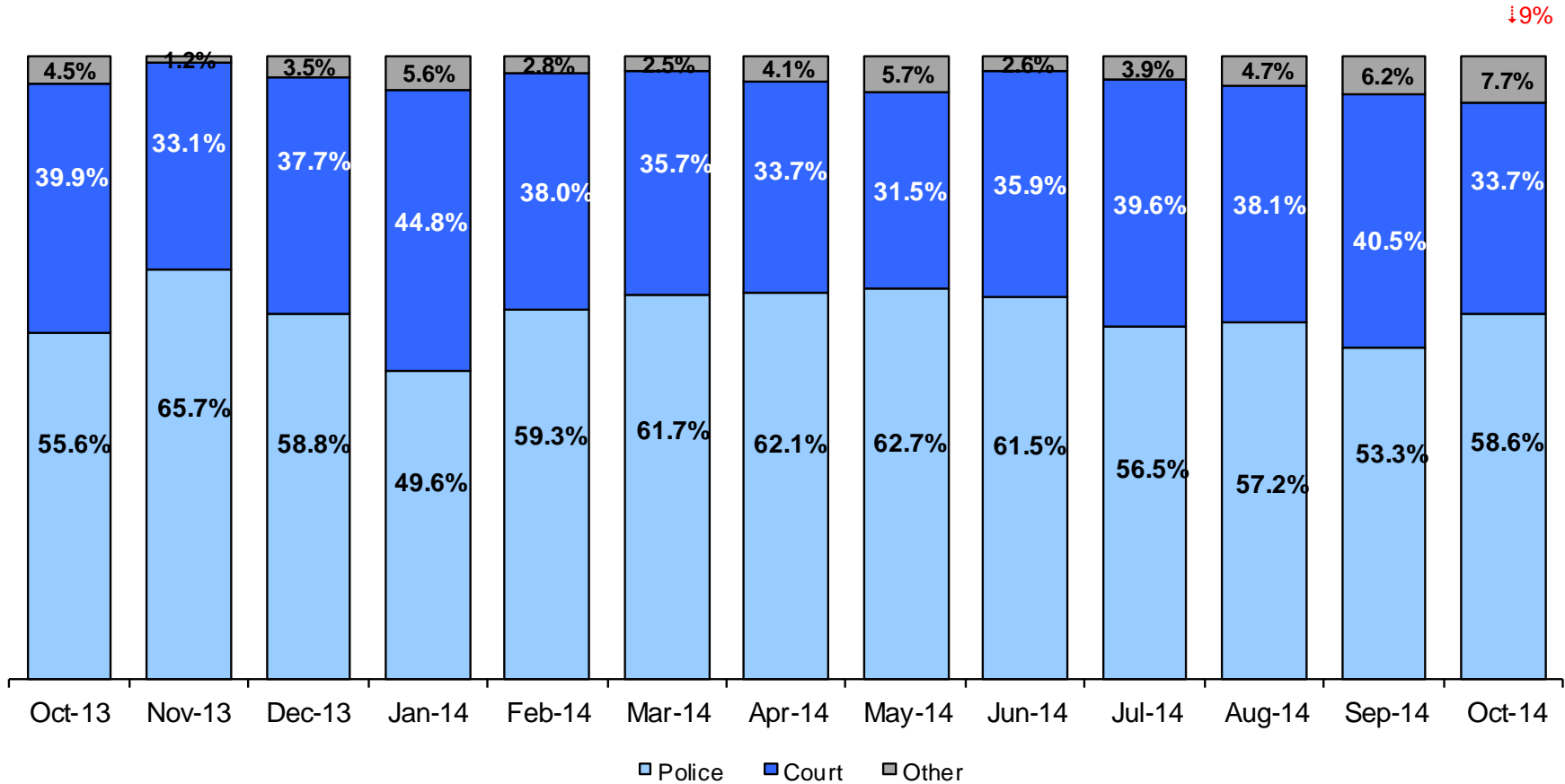
January 2011 – October 2014 (Monthly Total)



Note: Percentage change is October 2013 vs. October 2014.

### Admit Authority on Admissions

October 2013 - October 2014 (Monthly Total)



	Oct 2013	Nov 2013	Dec 2013	Jan 2014	Feb 2014	Mar 2014	Apr 2014	May 2014	Jun 2014	Jul 2014	Aug 2014	Sep 2014	Oct 2014
Number of Admissions	288	254	228	252	216	277	243	279	309	255	215	227	261

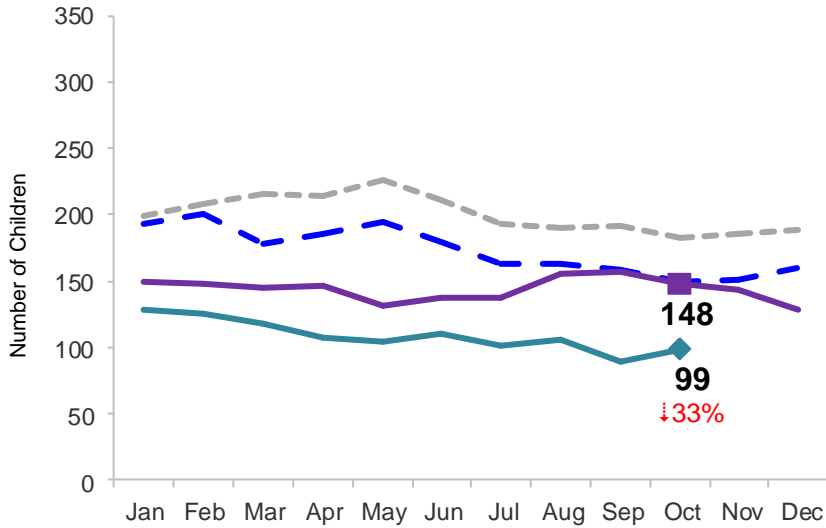
Notes: 1) Other Admit Authority includes the Sheriff Department, Department of Corrections and ACS. 2) Percentage change is October 2013 vs. October 2014.



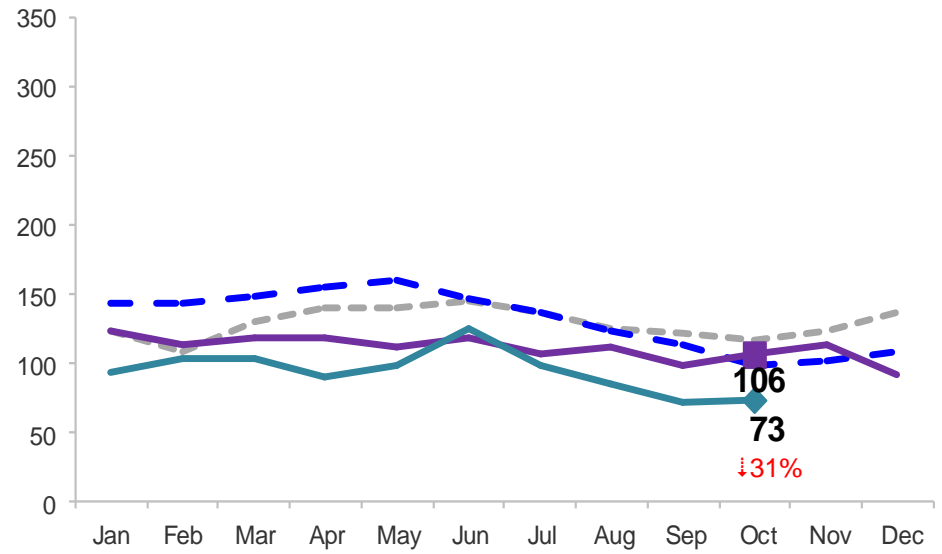
### Monthly Average Daily Population

January 2011 – October 2014

#### Secure Detention



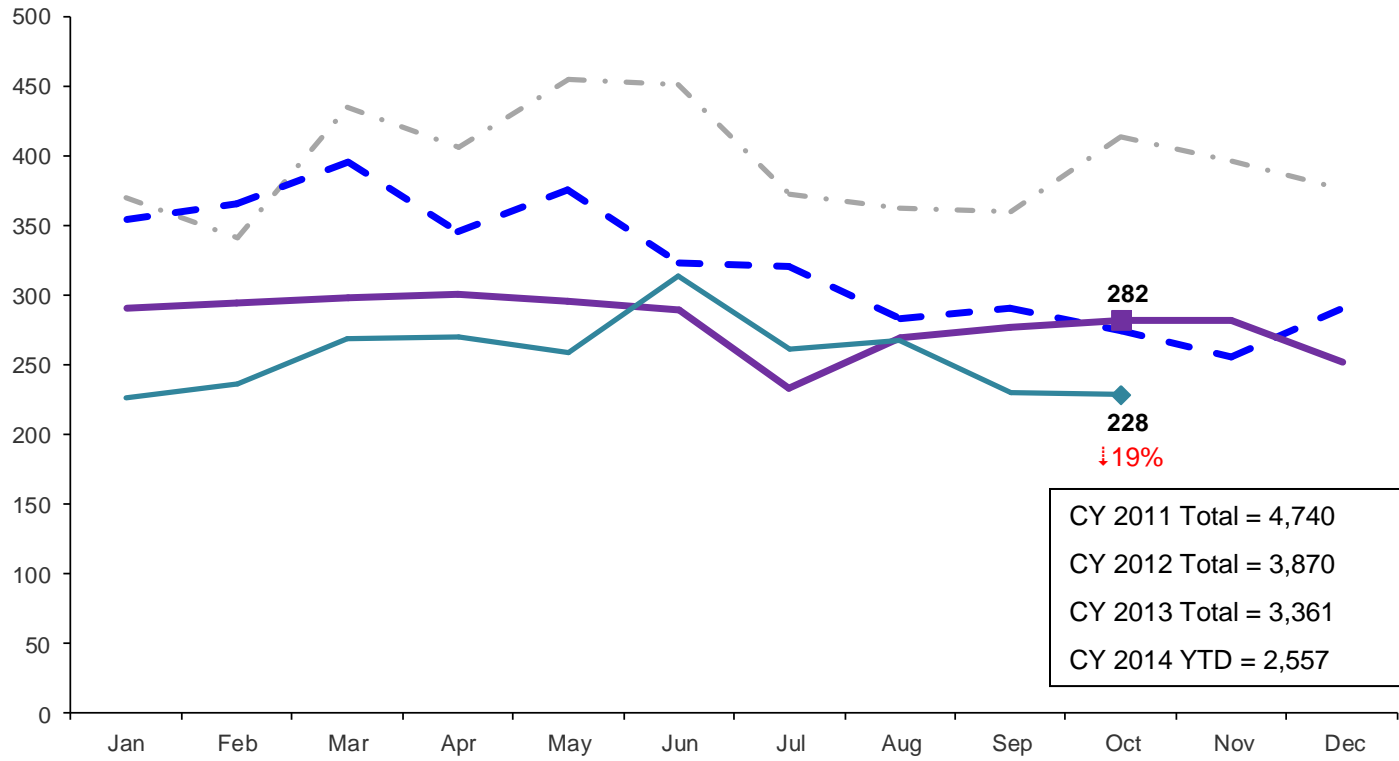
#### Non-Secure Detention



Note: Percentage change is October 2013 vs. October 2014.

### Total Monthly Releases from Detention

January 2011 – October 2014 (Monthly Total)

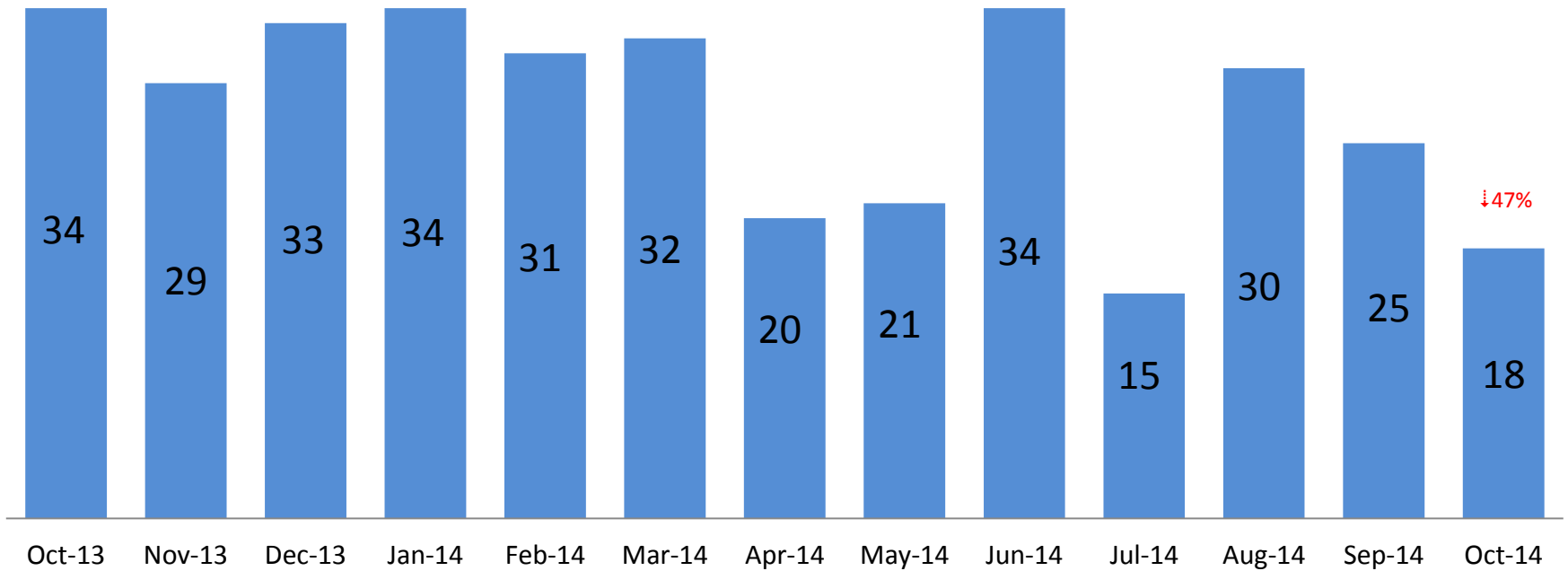


CY 2011 Total = 4,740  
 CY 2012 Total = 3,870  
 CY 2013 Total = 3,361  
 CY 2014 YTD = 2,557



Note: Percentage change is October 2013 vs. October 2014.

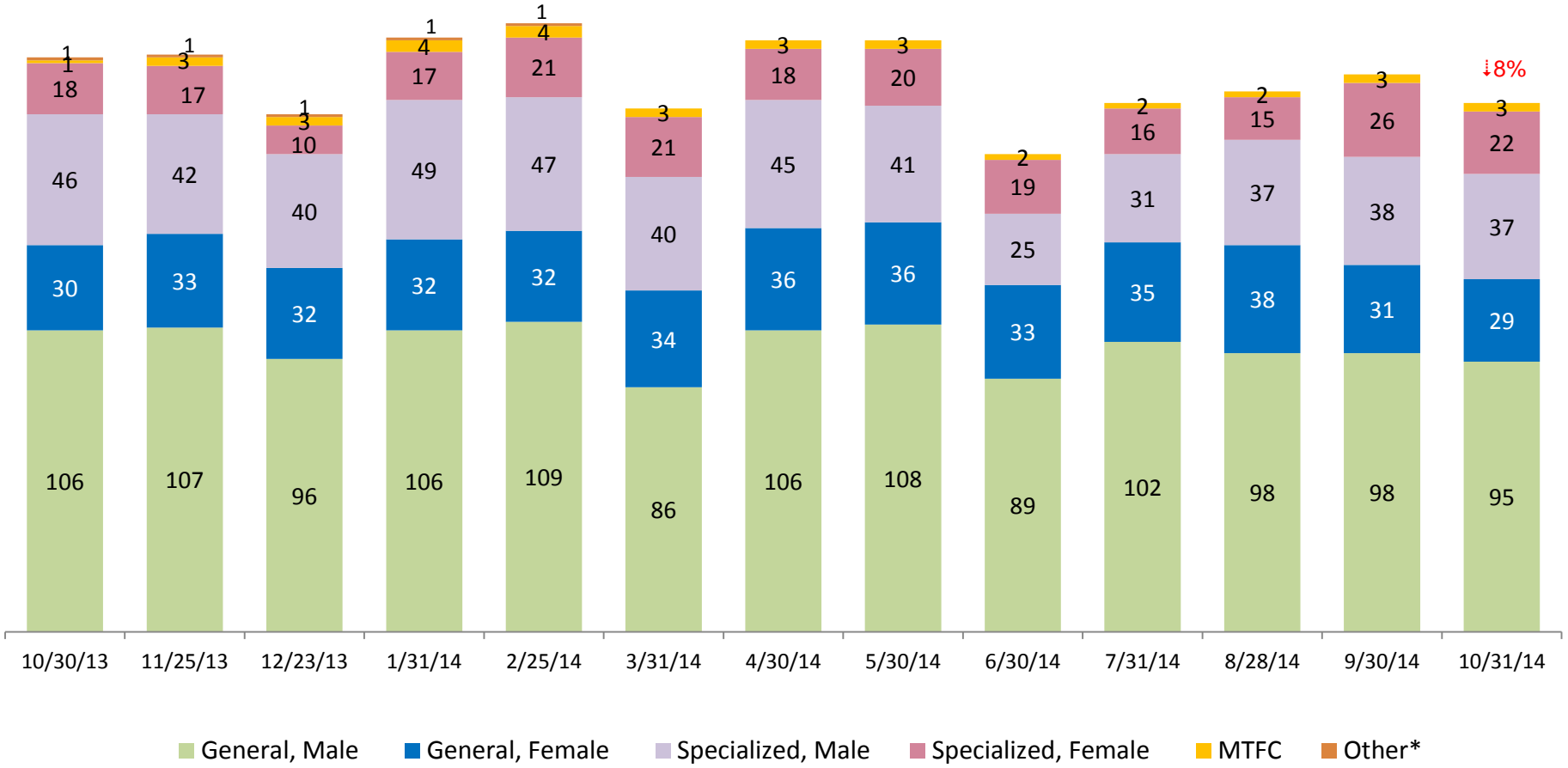
### ACS NSP Intakes October 2013 – October 2014



Note: Percentage change is October 2013 vs. October 2014.

# ACS Non-Secure Placement, in 24 hour Care

October 2013 – October 2014 (Point-in-Time)

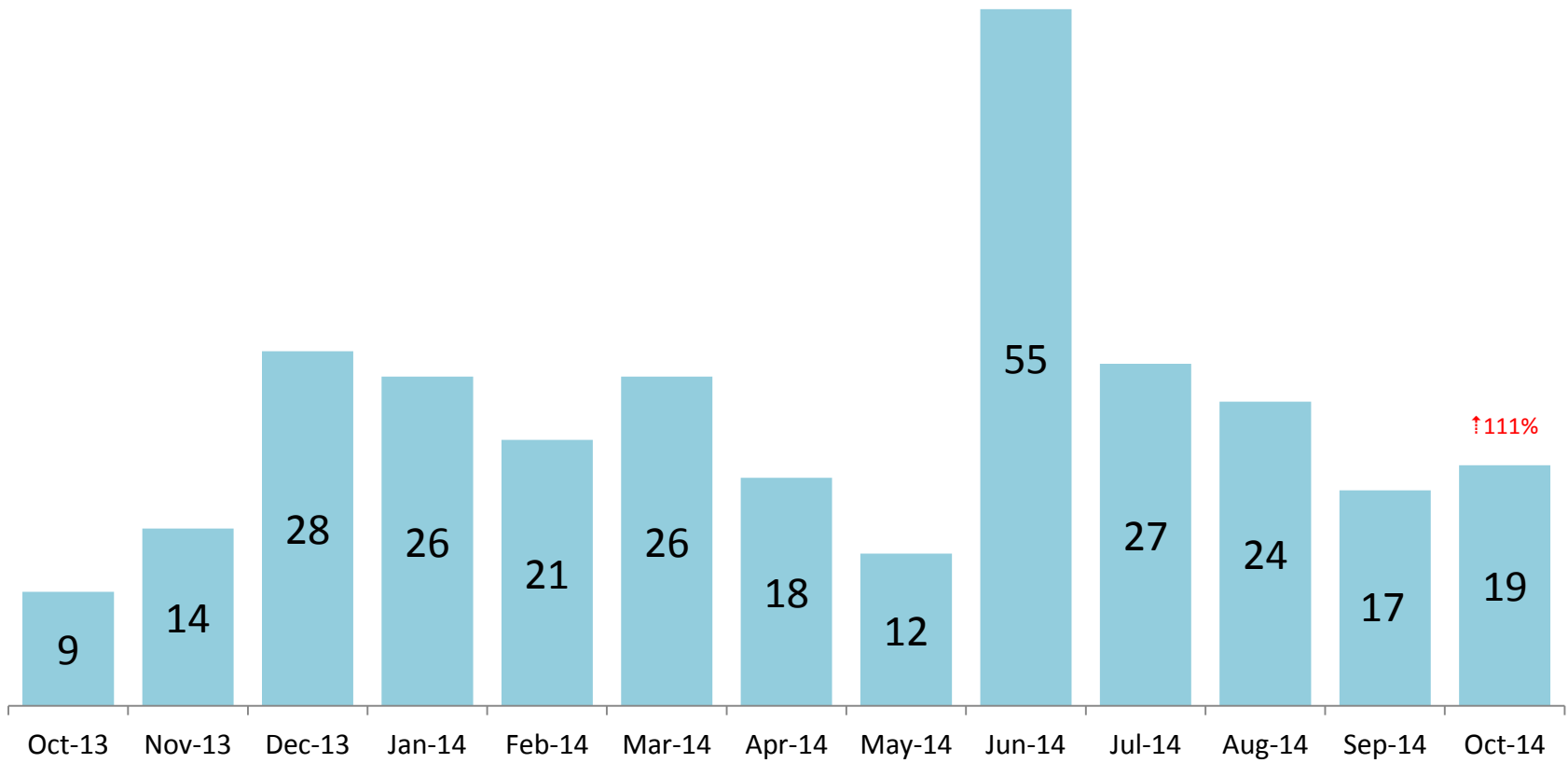


	10/30/13	11/25/13	12/23/13	1/31/14	2/25/14	3/31/14	4/30/14	5/30/14	6/30/14	7/31/14	8/28/14	9/30/14	10/31/14
Number in Placement	202	203	182	209	214	184	208	208	168	186	190	196	186

\*Other includes NYC youth in voluntary placements with Lincoln Hall, MercyFirst and Graham Windham.

Note: Percentage change is October 2013 vs. October 2014.

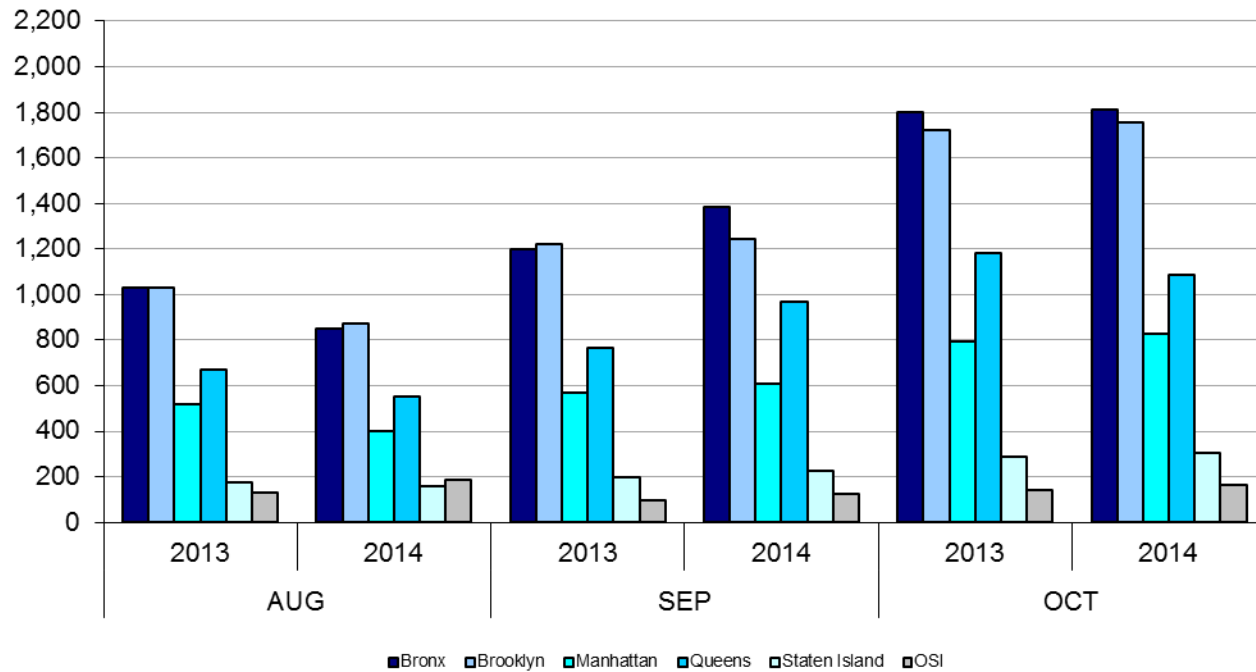
### Releases from NSP to Aftercare October 2013 – October 2014



Note: Percentage change is October 2013 vs. October 2014.

# Appendix

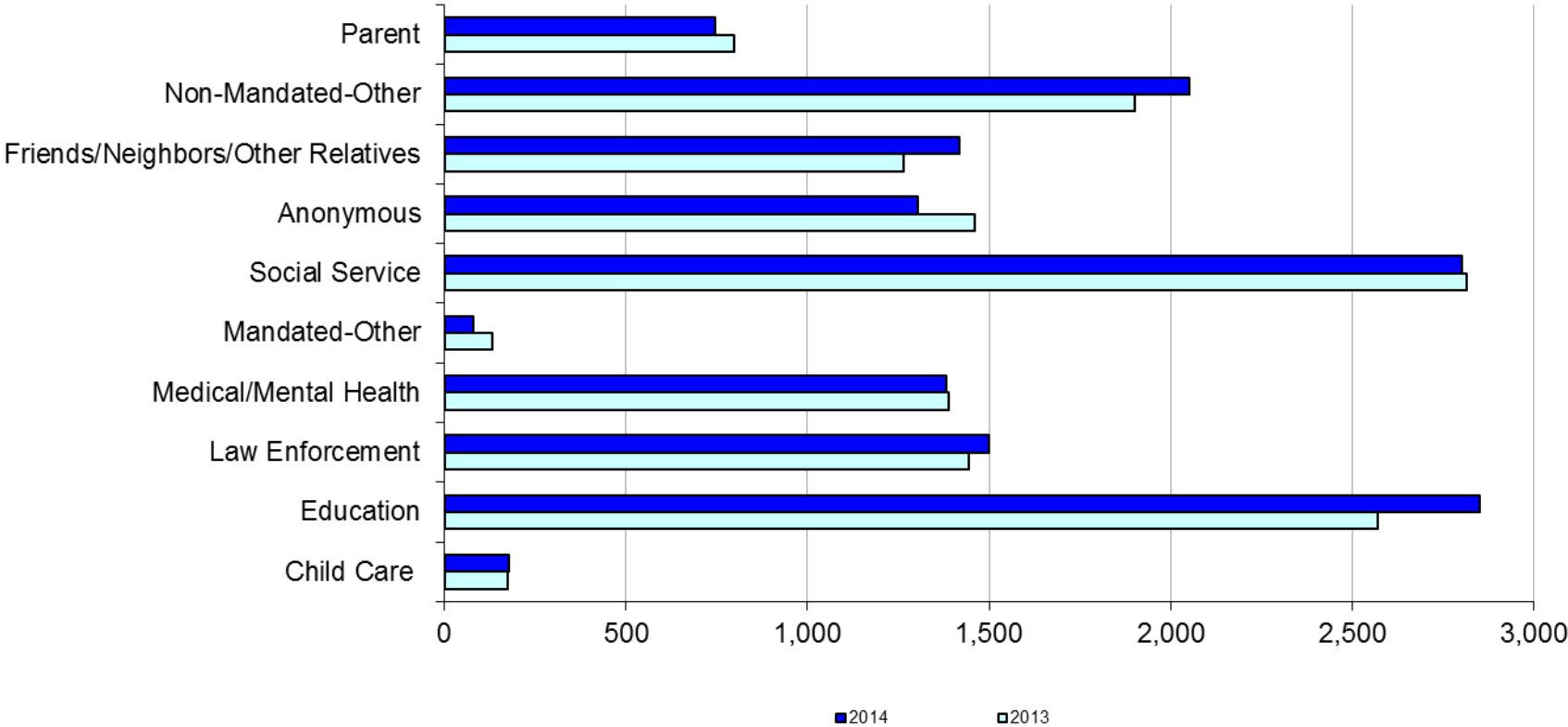
Figure 1: SCR Intakes by Borough, AUG 13 – OCT 13 and AUG 14 – OCT 14



**TABLE 1 - SCR Intake Changes by Borough, AUG 13 – OCT 13 and AUG 14 – OCT 14**

Month	Year	Bronx	Brooklyn	Manhattan	Queens	Staten Island	OSI	Other	Total
AUG	2013	1,028	1,032	516	669	177	132	133	3,687
	2014	852	873	398	552	158	185	91	3,109
	% Change	-17.1%	-15.4%	-22.9%	-17.5%	-10.7%	40.2%	-31.6%	-15.7%
SEP	2013	1,197	1,220	569	763	198	95	118	4,160
	2014	1,386	1,242	610	967	224	123	131	4,683
	% Change	15.8%	1.8%	7.2%	26.7%	13.1%	29.5%	11.0%	12.6%
OCT	2013	1,802	1,721	796	1,183	286	141	147	6,076
	2014	1,814	1,753	826	1,088	305	166	165	6,117
	% Change	0.7%	1.9%	3.8%	-8.0%	6.6%	17.7%	12.2%	0.7%
Total	2013	4,027	3,973	1,881	2,615	661	368	398	13,923
	2014	4,052	3,868	1,834	2,607	687	474	387	13,909
	% Change	0.6%	-2.6%	-2.5%	-0.3%	3.9%	28.8%	-2.8%	-0.1%

**Figure 2: Citywide SCR Intakes by Reporter Group, AUG 13 – OCT 13 and AUG 14 – OCT 14**

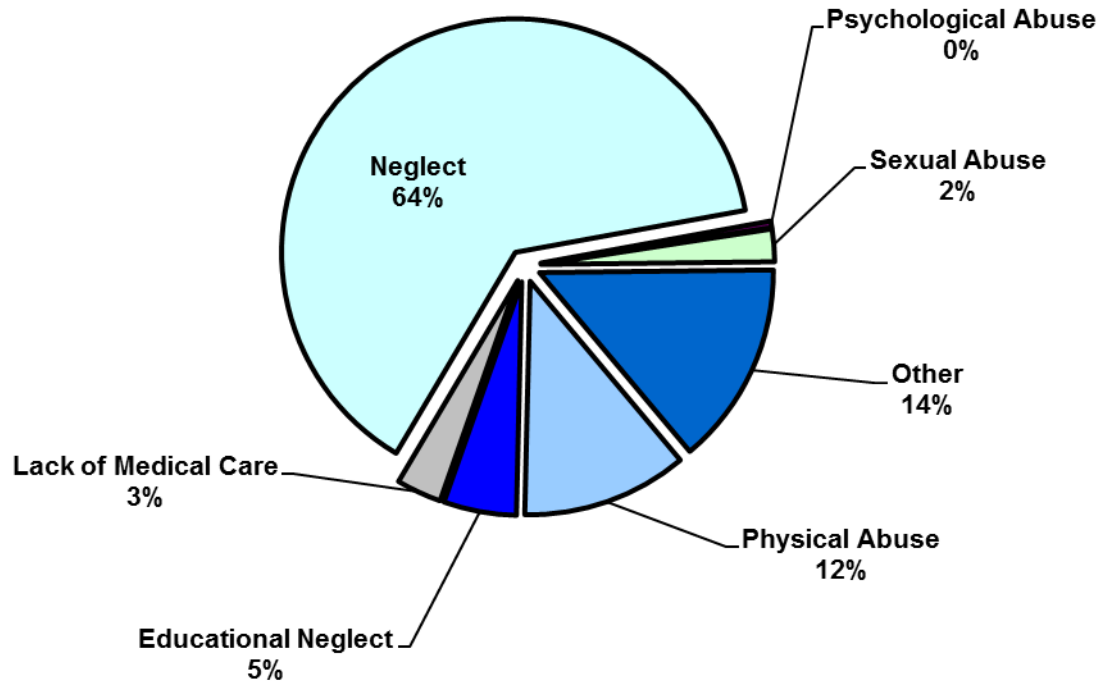




## TABLE 2 - SCR Intakes by Reporter Group, AUG 13 – OCT 13 and AUG 14 – OCT 14

Year	Child Care/ Substitute Care Personnel	Educational Personnel	Law Enforcement	Medical/ Mental Health Personnel	Mandated- Other	Social Service Personnel	Anonymous	Friends/ Neighbors/ Other Relatives	Non- Mandated- Other	Parent	Foster Parent	Total
<b>Bronx</b>												
2013	40	788	372	415	34	852	356	394	572	205	1	4,029
2014	47	878	324	429	26	828	385	443	616	197	2	4,175
% Change	17.5%	11.4%	-12.9%	3.4%	-23.5%	-2.8%	8.1%	12.4%	7.7%	-3.9%	100.0%	3.6%
<b>Brooklyn</b>												
2013	57	778	372	367	41	745	473	353	567	218	0	3,971
2014	41	841	453	355	15	735	375	399	597	193	2	4,006
% Change	-28.1%	8.1%	21.8%	-3.3%	-63.4%	-1.3%	-20.7%	13.0%	5.3%	-11.5%	--	0.9%
<b>Manhattan</b>												
2013	23	288	272	193	17	423	174	132	283	72	2	1,879
2014	34	299	265	202	18	390	147	174	297	85	0	1,911
% Change	47.8%	3.8%	-2.6%	4.7%	5.9%	-7.8%	-15.5%	31.8%	4.9%	18.1%	--	1.7%
<b>Queens</b>												
2013	27	515	274	263	25	510	312	264	281	143	0	2,614
2014	23	608	281	238	11	542	262	264	328	128	0	2,685
% Change	-14.8%	18.1%	2.6%	-9.5%	-56.0%	6.3%	-16.0%	0.0%	16.7%	-10.5%	--	2.7%
<b>Staten Island</b>												
2013	6	142	56	73	7	92	89	71	68	57	0	661
2014	5	168	71	57	4	107	90	90	80	33	1	706
% Change	-16.7%	18.3%	26.8%	-21.9%	-42.9%	16.3%	1.1%	26.8%	17.6%	-42.1%	--	6.8%
<b>OSI</b>												
2013	14	26	20	41	7	64	37	24	81	54	0	368
2014	22	35	20	41	6	76	31	26	94	70	2	423
% Change	57.1%	34.6%	0.0%	0.0%	-14.3%	18.8%	-16.2%	8.3%	16.0%	29.6%	--	14.9%
<b>Other</b>												
2013	7	32	78	37	1	130	18	28	49	50	0	430
2014	5	22	86	59	0	123	14	21	39	41	0	410
% Change	-28.6%	-31.3%	10.3%	59.5%	--	-5.4%	-22.2%	-25.0%	-20.4%	-18.0%	--	-4.7%
<b>Citywide</b>												
2013	174	2,569	1,444	1,389	132	2,816	1,459	1,266	1,901	799	3	13,952
2014	177	2,851	1,500	1,381	80	2,801	1,304	1,417	2,051	747	7	14,316
% Change	1.7%	11.0%	3.9%	-0.6%	-39.4%	-0.5%	-10.6%	11.9%	7.9%	-6.5%	133.3%	2.6%

**Figure 3: SCR Allegations, AUG 14 – OCT 14**



Total Allegations = 36,321

**TABLE 3 - SCR Allegations, AUG 13 - OCT 13 and AUG 14 - OCT 14**

Year	Physical Abuse	Educational Neglect	Lack of Medical Care	Neglect	Psychological Abuse	Sexual Abuse	Other	Total
<b>Bronx</b>								
2013	1,087	674	437	6,992	54	224	1,548	11,016
2014	1,147	681	369	6,931	38	250	1,539	10,955
% Change	5.5%	1.0%	-15.6%	-0.9%	-29.6%	11.6%	-0.6%	-0.6%
<b>Brooklyn</b>								
2013	1,265	641	396	6,703	36	235	1,576	10,852
2014	1,141	547	329	6,613	31	244	1,348	10,253
% Change	-9.8%	-14.7%	-16.9%	-1.3%	-13.9%	3.8%	-14.5%	-5.5%
<b>Manhattan</b>								
2013	464	233	177	2652	22	90	625	4,263
2014	429	217	140	2570	30	78	589	4,053
% Change	-7.5%	-6.9%	-20.9%	-3.1%	36.4%	-13.3%	-5.8%	-4.9%
<b>Queens</b>								
2013	905	234	216	3,924	62	139	1,073	6,553
2014	871	237	161	4,008	43	121	893	6,334
% Change	-3.8%	1.3%	-25.5%	2.1%	-30.6%	-12.9%	-16.8%	-3.3%
<b>Staten Island</b>								
2013	154	102	40	1,222	13	46	305	1,882
2014	177	78	46	1,283	12	31	373	2,000
% Change	14.9%	-23.5%	15.0%	5.0%	-7.7%	-32.6%	22.3%	6.3%
<b>OSI</b>								
2013	246	31	42	1,036	4	36	129	1,524
2014	294	27	53	1,105	8	61	159	1,707
% Change	19.5%	-12.9%	26.2%	6.7%	100.0%	69.4%	23.3%	12.0%
<b>Other</b>								
2013	115	51	29	658	11	29	257	1,150
2014	108	42	35	590	3	33	208	1,019
% Change	-6.1%	-17.6%	20.7%	-10.3%	-72.7%	13.8%	-19.1%	-11.4%
<b>Citywide</b>								
2013	4,236	1,966	1,337	23,187	202	799	5,513	37,240
2014	4,167	1,829	1,133	23,100	165	818	5,109	36,321
% Change	-1.6%	-7.0%	-15.3%	-0.4%	-18.3%	2.4%	-7.3%	-2.5%

**TABLE 4 - Purchased Preventive Cases  
Opened and Closed  
January 2012 to October 2014**

Month	Opened Cases	Closed Cases
<b>2012</b>		
Jan-12	870	629
Feb-12	889	835
Mar-12	944	991
Apr-12	997	870
May-12	1,117	979
Jun-12	965	869
Jul-12	853	979
Aug-12	917	1,007
Sep-12	727	900
Oct-12	875	915
Nov-12	738	702
Dec-12	938	871
<b>2013</b>		
Jan-13	960	884
Feb-13	873	916
Mar-13	962	1,171
Apr-13	940	988
May-13	864	1,337
Jun-13	863	780
Jul-13	868	1,004
Aug-13	802	1,084
Sep-13	844	724
Oct-13	933	765
Nov-13	901	685
Dec-13	1,106	552
<b>2014</b>		
Jan-14	983	640
Feb-14	987	679
Mar-14	1,146	874
Apr-14	1,074	896
May-14	1,042	888
Jun-14	976	762
Jul-14	1,050	1,077
Aug-14	944	943
Sep-14	987	705
Oct-14	1,050	819

**Table 5 - Referrals to Purchased Preventive Services by Source  
January 2012 to October 2014**

Month	Total Referrals	Division of Child Protection	Foster Care Agencies	PPRS Transfer	School	Self	Other Sources*
<b>2012</b>							
Jan-12	1,431	66.5%	0.7%	8.5%	3.6%	3.8%	17.0%
Feb-12	1,043	78.2%	1.1%	9.0%	1.9%	6.7%	3.1%
Mar-12	1,525	73.6%	0.9%	6.0%	1.8%	3.9%	13.8%
Apr-12	1,370	72.8%	1.0%	9.4%	1.2%	4.2%	11.4%
May-12	1,463	70.9%	1.0%	7.6%	1.1%	4.4%	15.0%
Jun-12	1,279	73.8%	0.5%	5.9%	1.0%	4.7%	14.2%
Jul-12	1,308	77.4%	1.2%	7.0%	0.3%	3.7%	10.5%
Aug-12	1,391	74.0%	0.9%	11.7%	0.3%	2.9%	10.2%
Sep-12	1,110	70.5%	1.9%	9.6%	1.2%	5.0%	11.9%
Oct-12	1,159	61.1%	1.4%	12.6%	2.7%	4.9%	17.3%
Nov-12	1,106	67.0%	1.0%	9.9%	2.2%	4.7%	15.3%
Dec-12	1,206	68.7%	0.8%	5.8%	2.7%	5.6%	16.4%
CY 2012	15,391	71.3%	1.0%	8.5%	1.6%	4.5%	13.1%
<b>2013</b>							
Jan-13	1,474	74.1%	1.2%	7.3%	1.2%	3.7%	12.5%
Feb-13	1,308	75.8%	1.1%	8.0%	1.6%	2.9%	10.6%
Mar-13	1,270	73.5%	1.2%	6.7%	2.4%	3.9%	12.3%
Apr-13	1,421	77.9%	0.8%	7.4%	0.9%	3.0%	10.1%
May-13	1,320	68.4%	0.5%	10.2%	1.5%	3.8%	15.5%
Jun-13	953	69.2%	1.2%	9.4%	2.6%	5.0%	12.6%
Jul-13	1,014	66.3%	1.9%	14.4%	1.6%	3.9%	11.9%
Aug-13	1,212	70.5%	0.7%	11.8%	0.7%	4.7%	11.6%
Sep-13	1,262	64.0%	2.1%	11.3%	1.7%	6.7%	14.2%
Oct-13	1,319	61.0%	1.1%	9.0%	2.9%	7.5%	18.5%
Nov-13	1,249	55.9%	1.6%	10.5%	4.6%	9.2%	18.3%
Dec-13	1,464	62.2%	1.2%	8.2%	2.3%	9.2%	17.0%
CY 2013	15,266	68.3%	1.2%	9.4%	2.0%	5.3%	13.8%
<b>2014</b>							
Jan-14	1,537	70.0%	1.2%	6.6%	2.3%	5.8%	14.2%
Feb-14	1,334	69.7%	0.8%	8.4%	1.7%	5.5%	13.9%
Mar-14	1,612	70.0%	1.4%	8.6%	1.6%	5.3%	13.1%
Apr-14	1,525	70.2%	0.9%	7.6%	2.1%	3.7%	15.4%
May-14	1,580	74.4%	0.7%	8.3%	1.4%	5.2%	10.0%
Jun-14	1,550	78.6%	1.2%	6.3%	1.2%	3.2%	9.4%
Jul-14	1,659	79.6%	1.5%	6.7%	0.4%	4.2%	7.6%
Aug-14	1,395	72.2%	1.6%	10.8%	0.3%	4.9%	10.3%
Sep-14	1,597	49.4%	1.5%	7.6%	0.3%	4.5%	36.8%
Oct-14	1,634	68.2%	1.9%	10.0%	1.2%	4.6%	14.1%

\*Other Community Sources includes the Department of Homeless Services, Family Court, FAP, Hospitals and Medical facilities, the NYC Housing Authority, PINS/DAS, Probation, and Sponsor Agencies.