

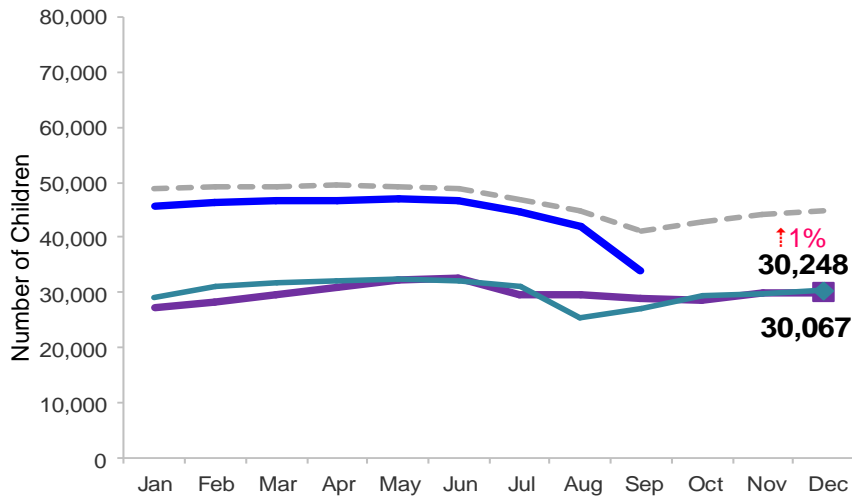


Flash

January 2015

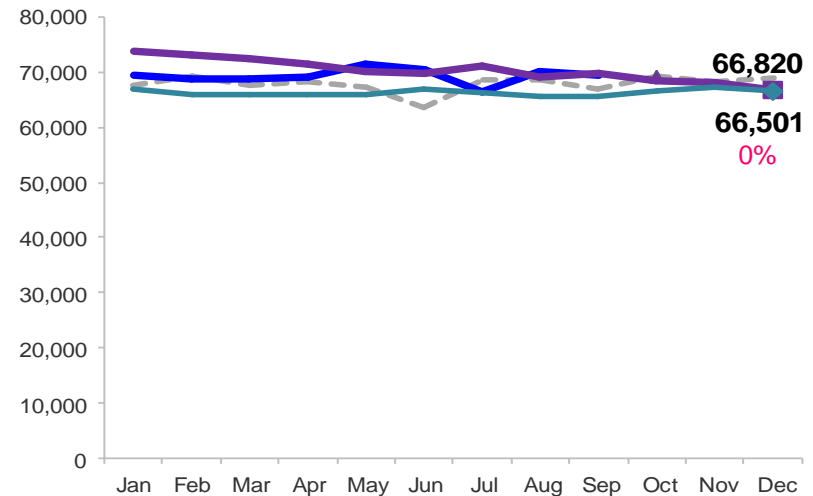
Children Enrolled in Contracted EarlyLearn Programs

January 2011 – December 2014 (End of Month)



Children Using Vouchers for Child Care

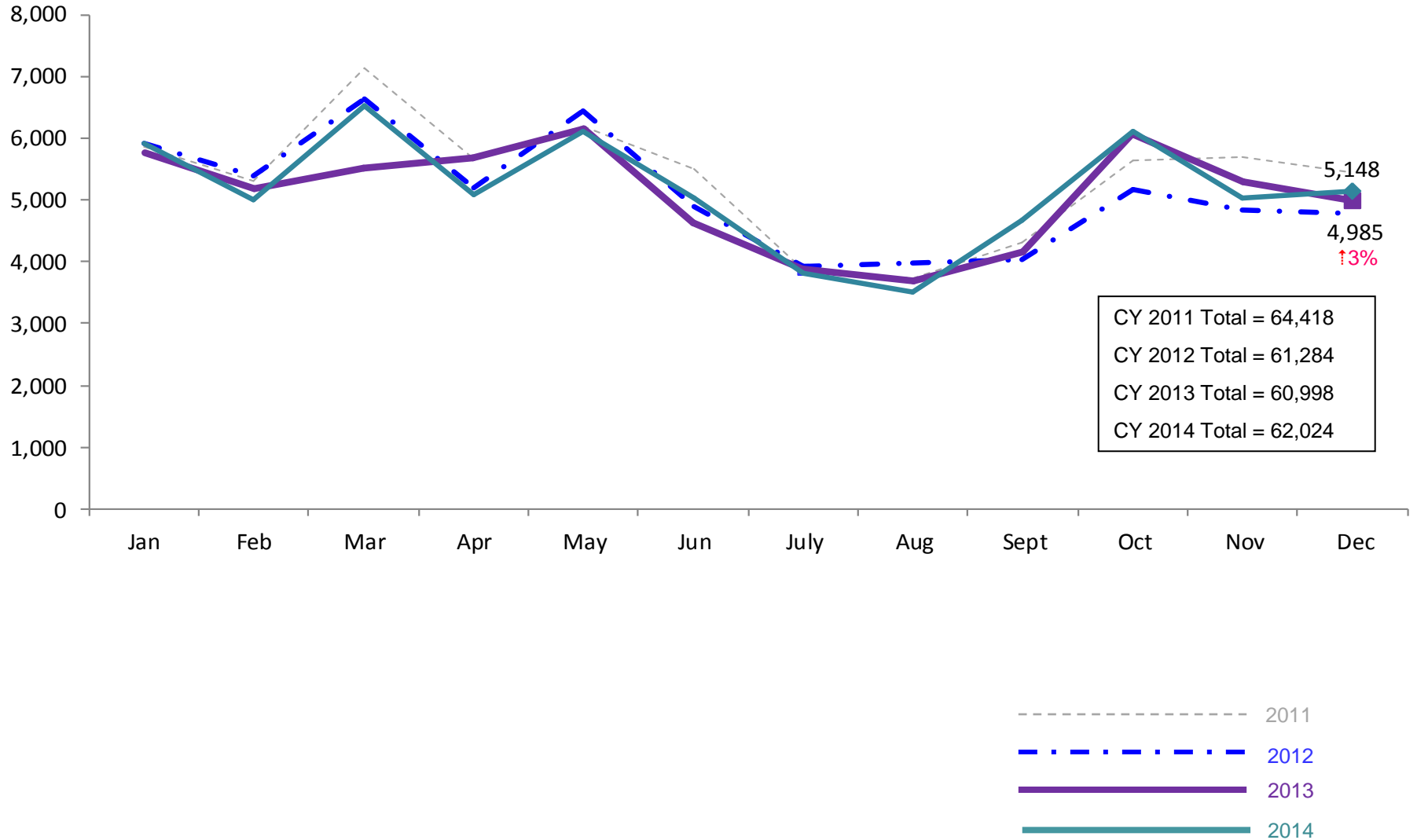
January 2011 – December 2014 (End of Month)



Notes: 1) Beginning October 1, 2012 ACS converted its early care and education system to a new model, EarlyLearn NYC. Enrollment data for the transitional months of October – December 2012 are not available because contractors were in the midst of implementing the data collection systems. 2) Percentage change is December 2013 vs. December 2014.

SCR Intakes

January 2011 – December 2014 (Monthly Total)

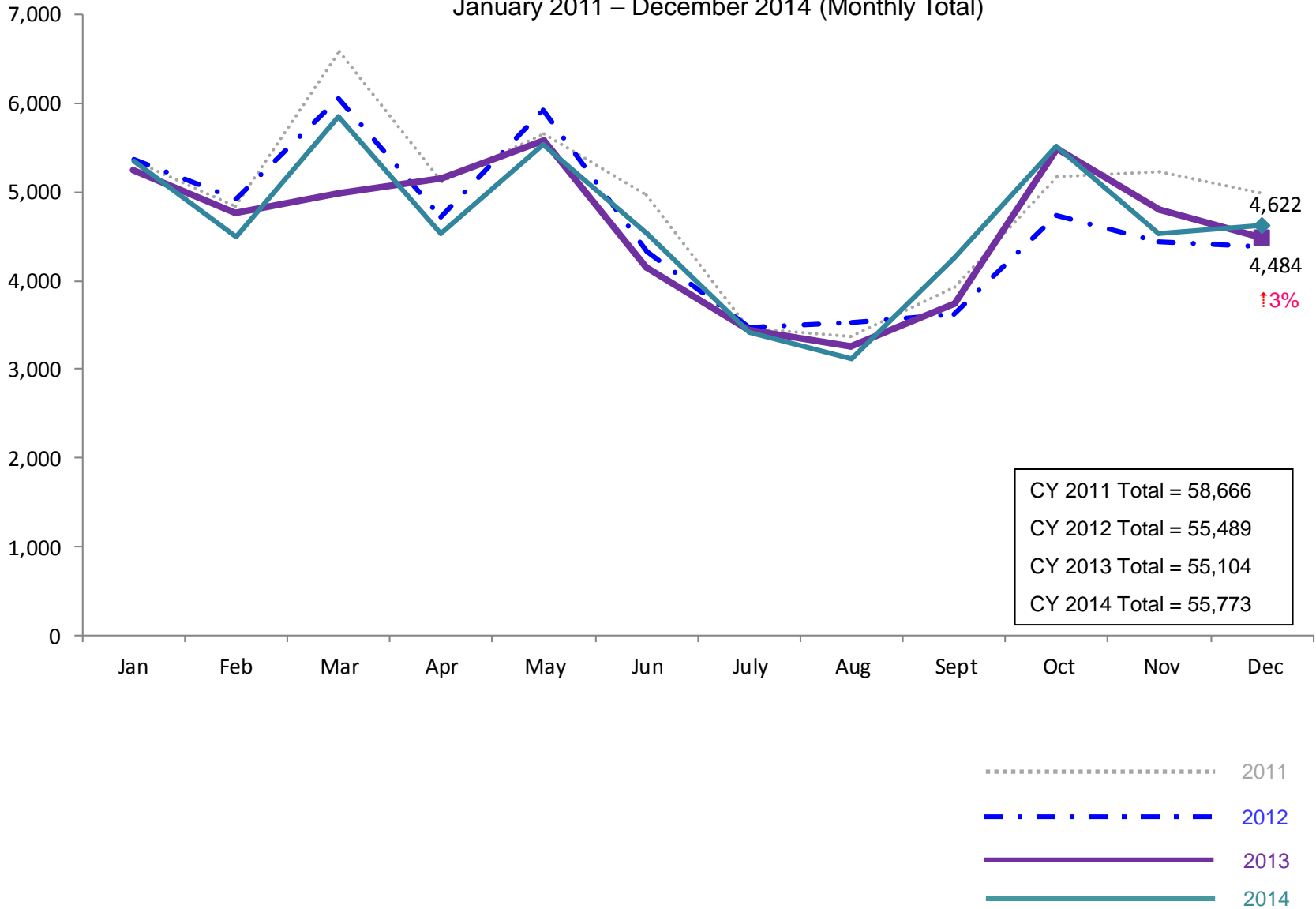


Note: Percentage change is December 2013 vs. December 2014.

See Pages 30 through 35 of the Appendix for supporting data.

SCR Consolidated Investigations

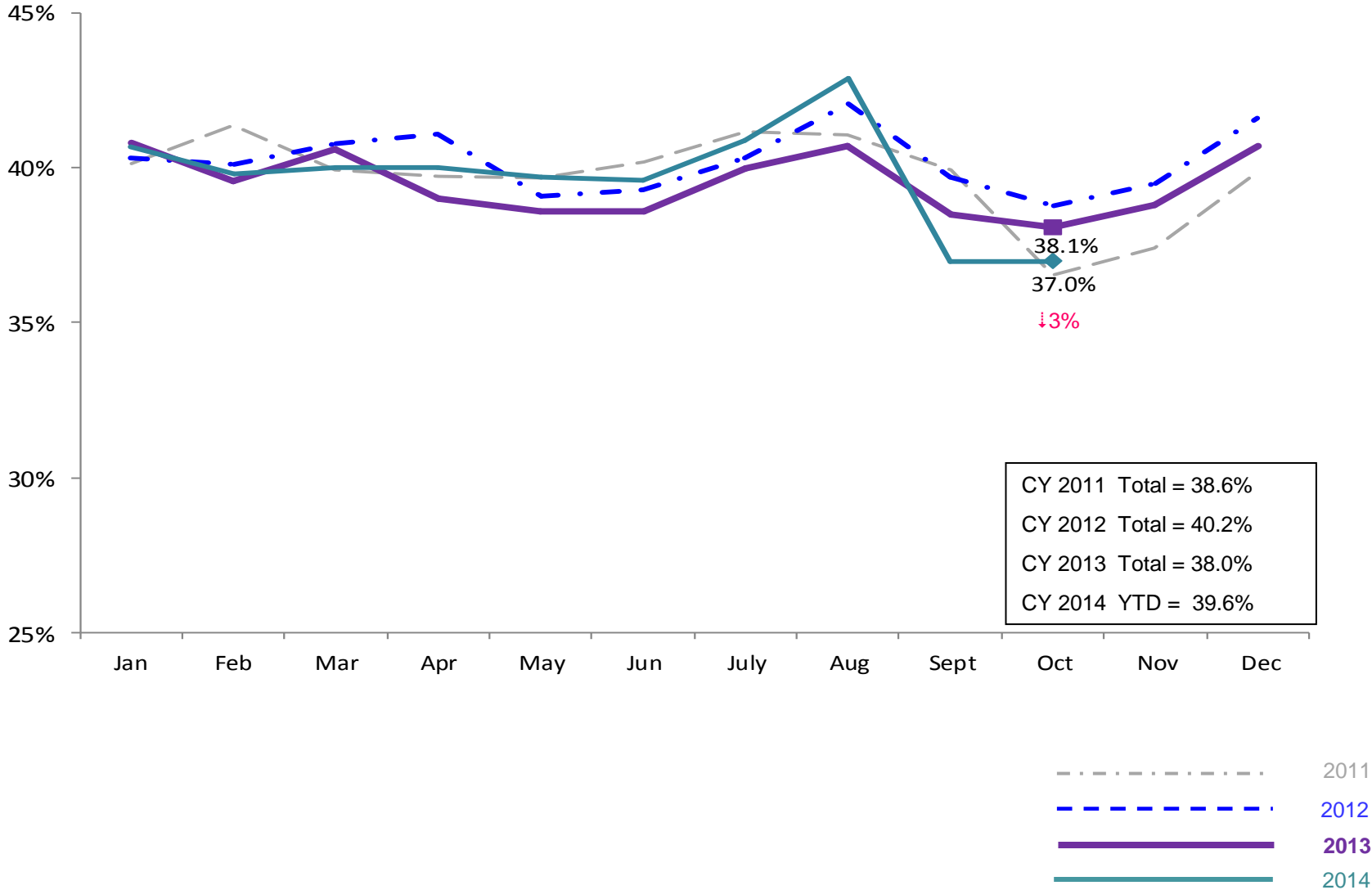
January 2011 – December 2014 (Monthly Total)



Note: Percentage change is December 2013 vs. December 2014.

SCR Investigation Indication Rate

January 2011 – October 2014

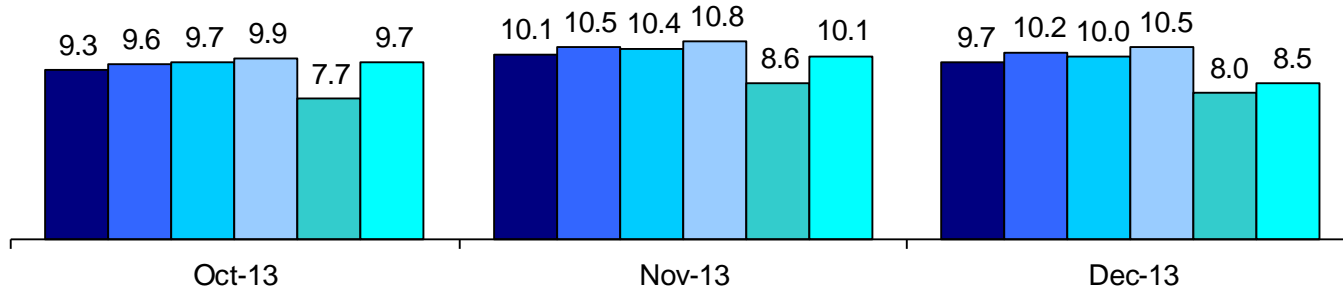


Note: Percentage change is October 2013 vs. October 2014.

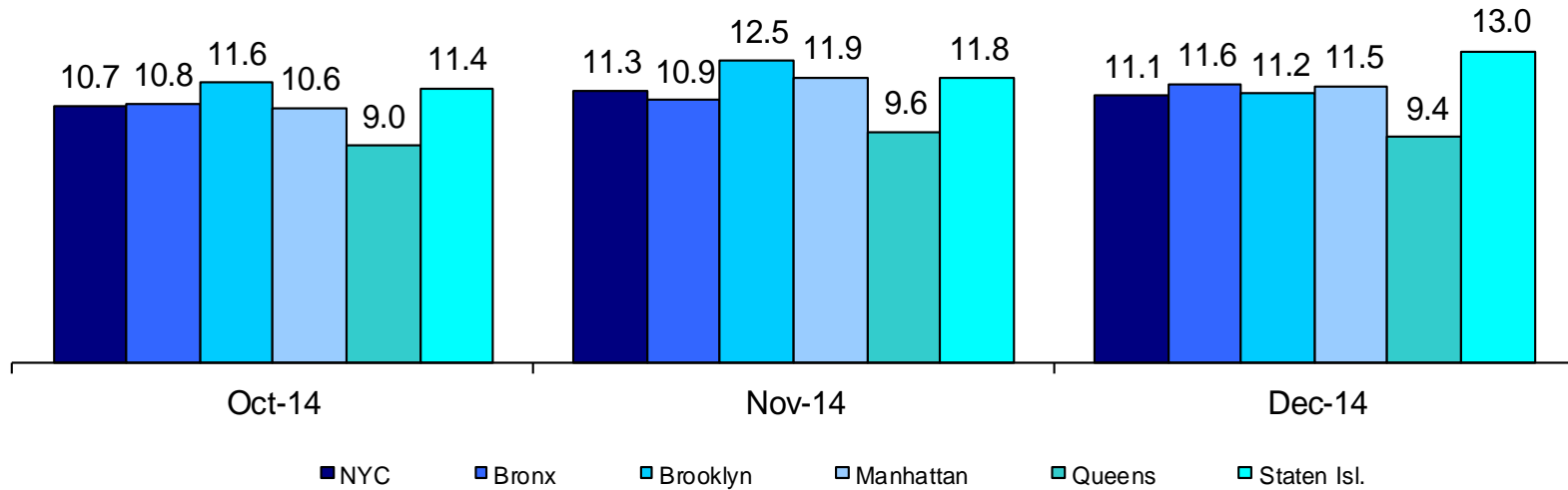
Average P/D Combined Caseload*

October 2013 – December 2013 & October 2014 – December 2014

2013



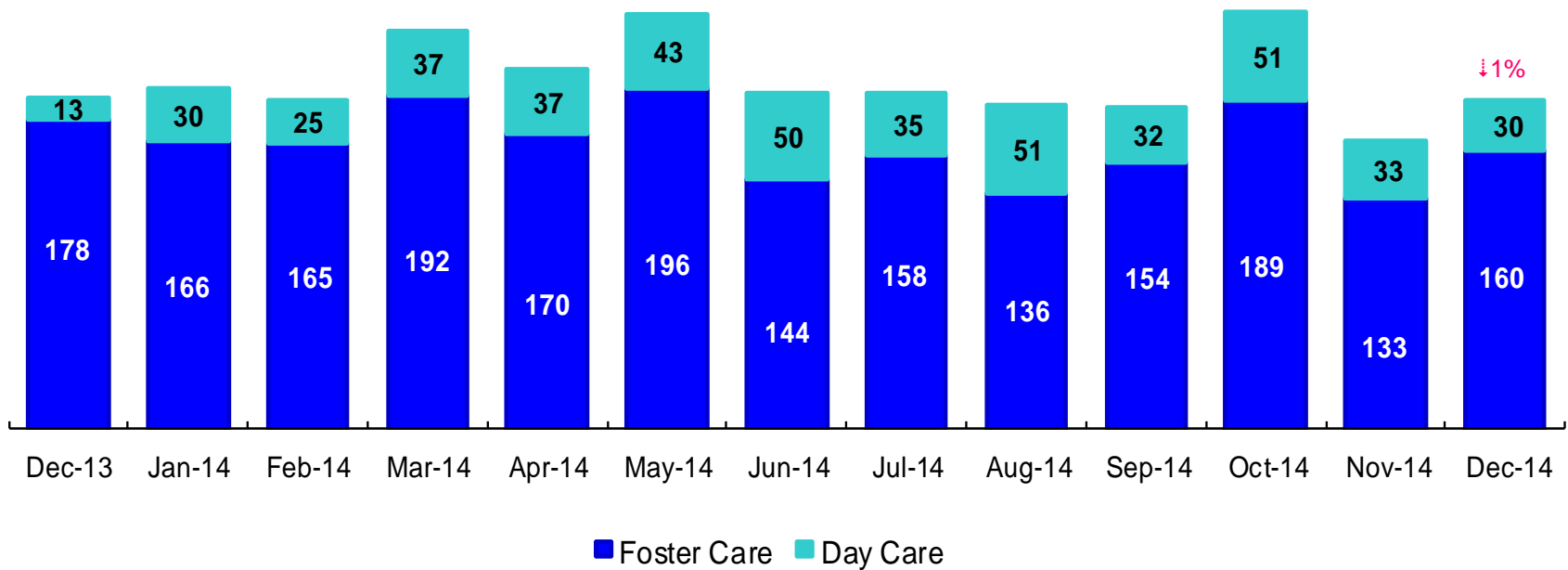
2014



* Caseloads are of protective/diagnostic caseworkers only and exclude the caseloads carried by Level I and Level II Supervisors. 6

OSI Investigations by Program

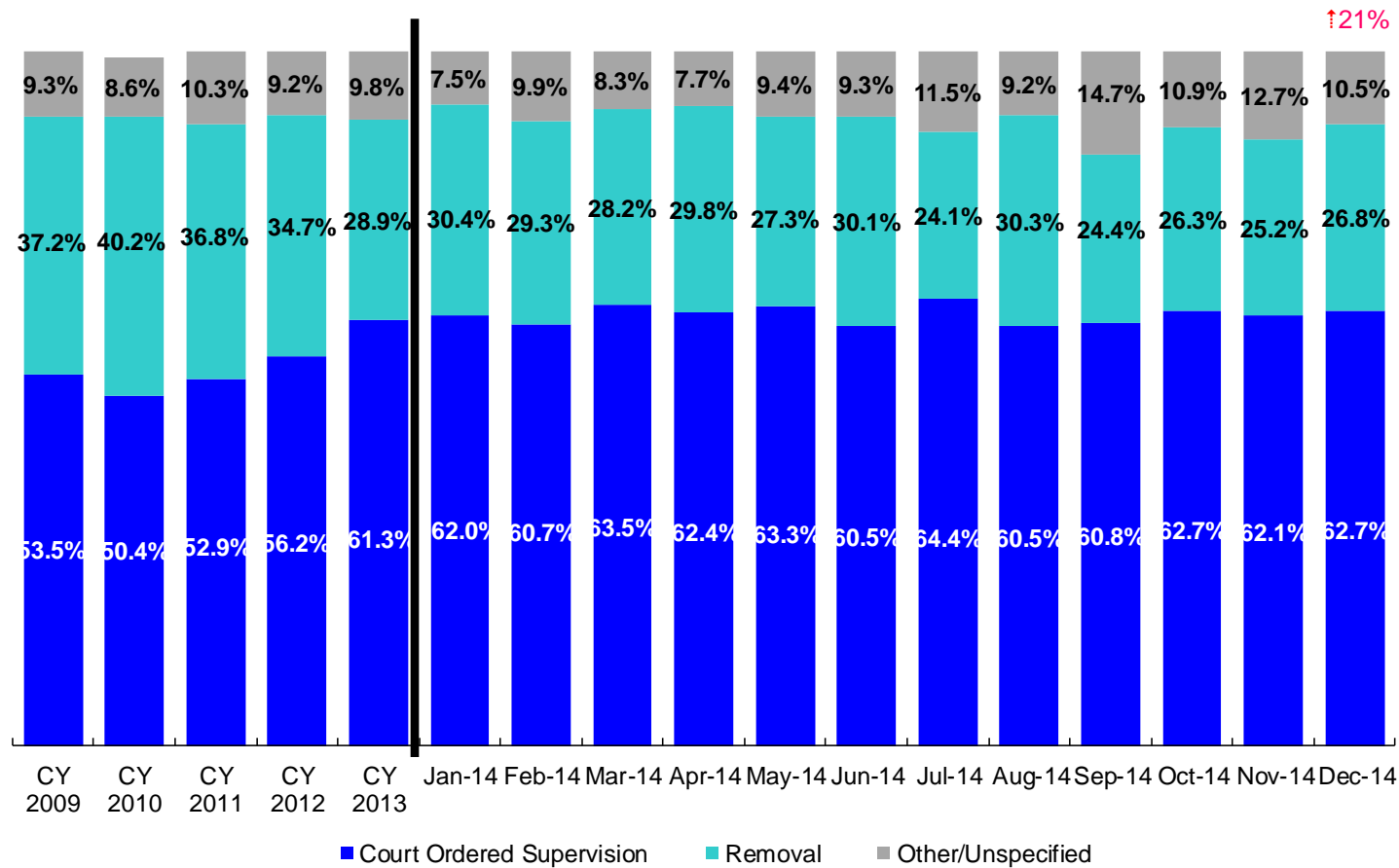
December 2013 – December 2014



	Dec 2013	Jan 2014	Feb 2014	Mar 2014	Apr 2014	May 2014	Jun 2014	July 2014	Aug 2014	Sep 2014	Oct 2014	Nov 2014	Dec 2014
Number of Investigations	191	196	190	229	207	239	194	193	187	186	240	166	190

Note: Percentage change is December 2013 vs. December 2014.

Article 10 Total Filings & Filing Outcomes, CY 2009 - CY 2013 and January – December 2014

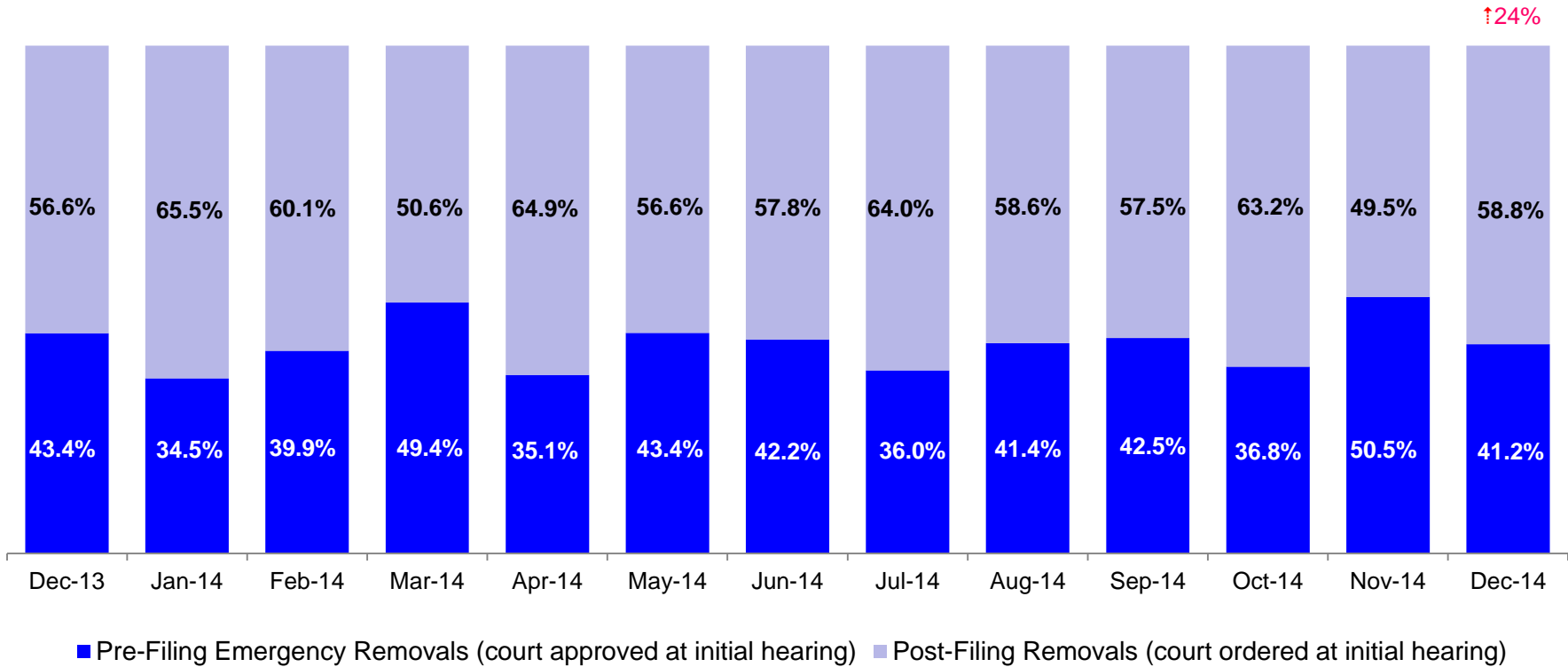


↑21%

	CY 2009	CY 2010	CY 2011	CY 2012	CY 2013	Jan 2014	Feb 2014	Mar 2014	Apr 2014	May 2014	Jun 2014	Jul 2014	Aug 2014	Sep 2014	Oct 2014	Nov 2014	Dec 2014
Art.10 Filings	11,568	10,093	9,596	8,913	9,318	743	828	905	801	978	826	713	749	733	877	771	976

Notes: 1) The category “Other/Unspecified” includes released with no supervision, no order issued and no outcome specified. Outcomes of cases heard the next day are not captured in this report. 2) Percentage change is December 2013 vs. December 2014.

Article 10 Filing Removals, December 2013 – December 2014



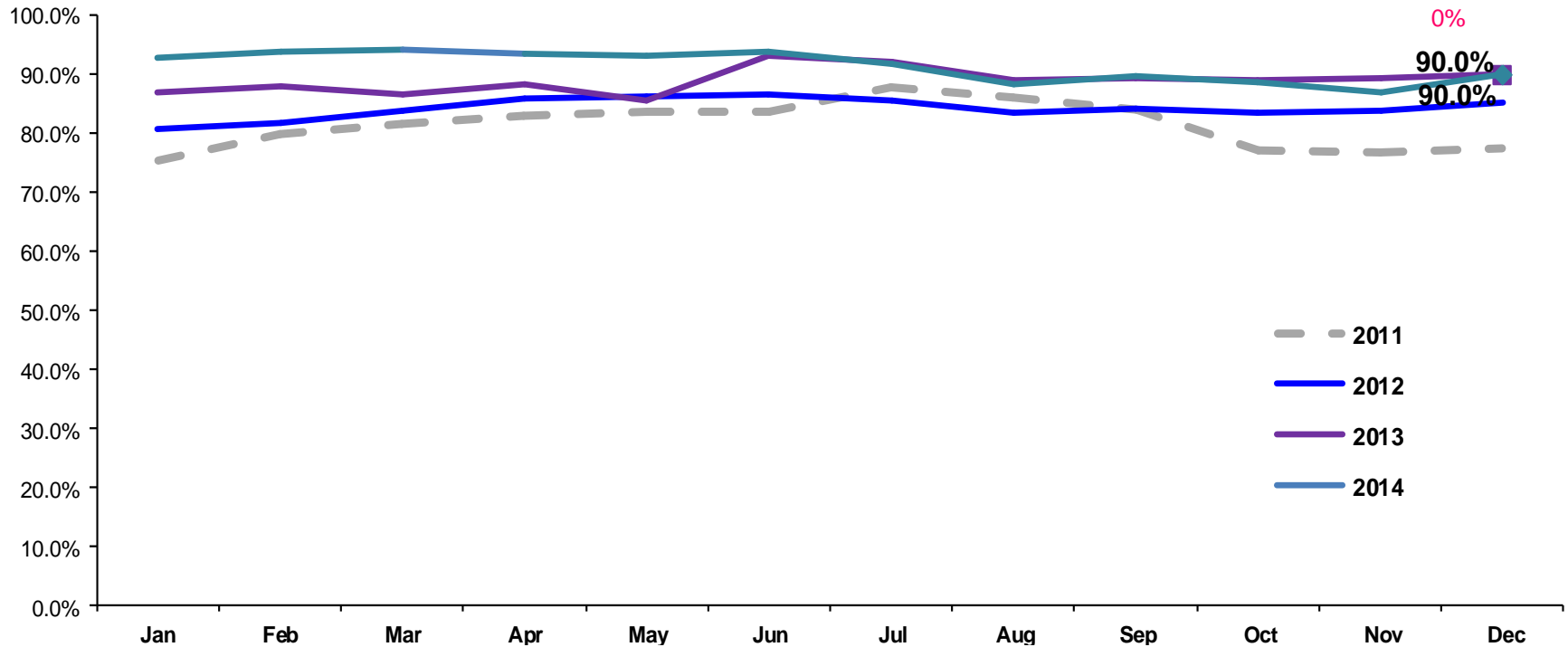
	Dec 2013	Jan 2014	Feb 2014	Mar 2014	Apr 2014	May 2014	Jun 2014	Jul 2014	Aug 2014	Sep 2014	Oct 2014	Nov 2014	Dec 2014
Number of Removals	212	226	243	255	239	267	249	172	227	179	231	194	262

Note: Percentage change is December 2013 vs. December 2014.

PPRS Utilization Rate

January 2011 – December 2014 (End of Month)

General Preventive

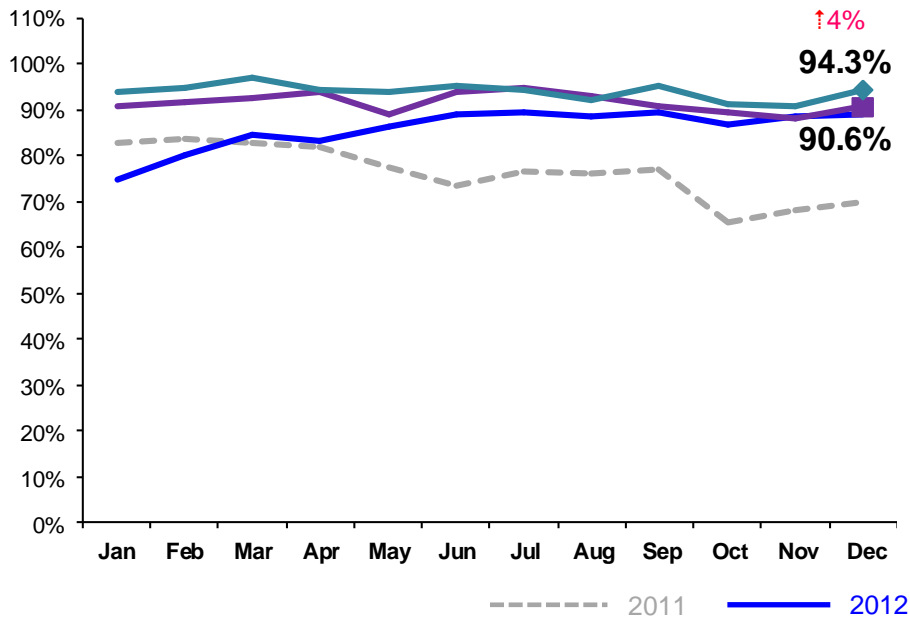


Notes: 1) Beacons programs are included in the GP utilization rates. 2) During February - June 2011 GP rates were adjusted by excluding programs in the process of being closed. GP rates were also adjusted during July – September 2011 by excluding newly opened programs. 3) During June-October 2013 GP programs in the process of converting to EBMs were excluded from the GP utilization statistics. 4) Percentage change is December 2013 vs. December 2014.

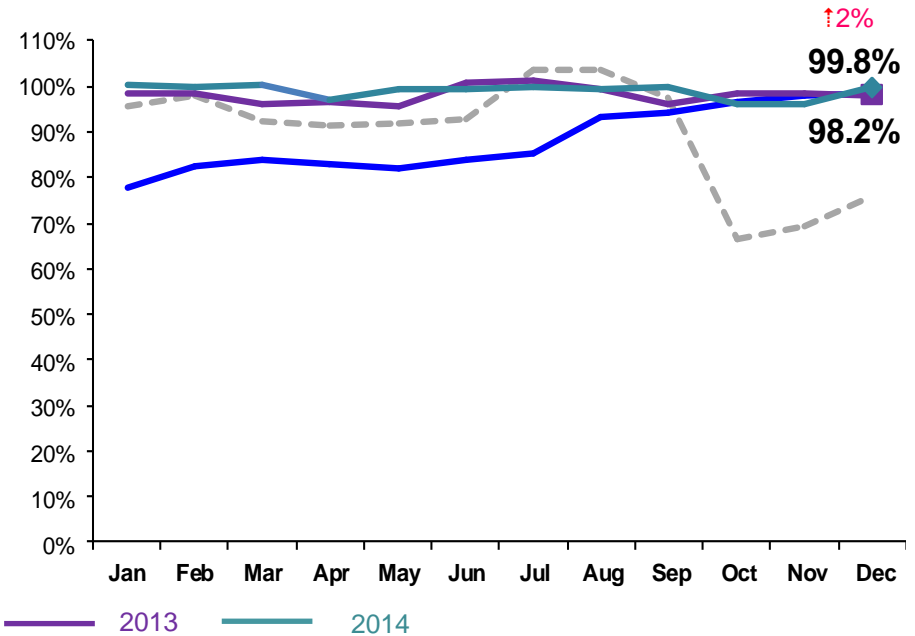
PPRS Utilization Rate

January 2011 – December 2014 (End of Month)

Family Rehabilitation Program/Family Treatment Rehabilitation



Medically Fragile

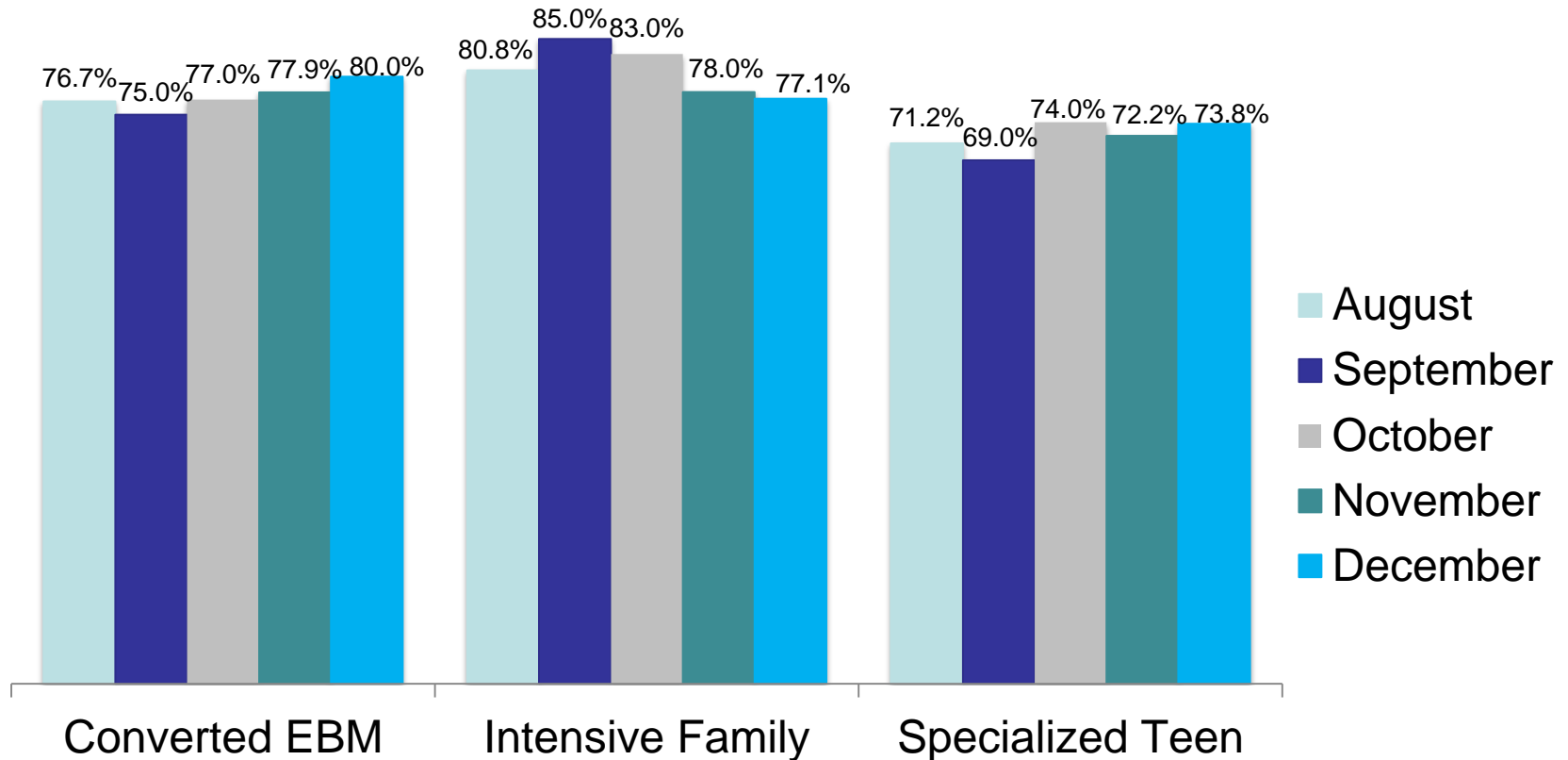


Notes: 1) During February - June 2011 FRP rates were adjusted by excluding programs in the process of being closed. FT/R rates were also adjusted during July – September 2011 by excluding newly opened programs. As of October 2011 all FT/R programs are included in the FT/R utilization rates. 2) Beginning July 2011 Family Treatment Rehabilitation programs replaced the Family Rehabilitation programs. 3) Beginning December 2011 the NYF Family Services for deaf Children and Adults program is no longer included in the medically fragile utilization rate. 4) During June -October 2013 FTR programs in the process of converting to EBMs were excluded from the FTR utilization statistics. 5) Percentage change is December 2013 vs. December 2014.

PPRS Utilization Rate

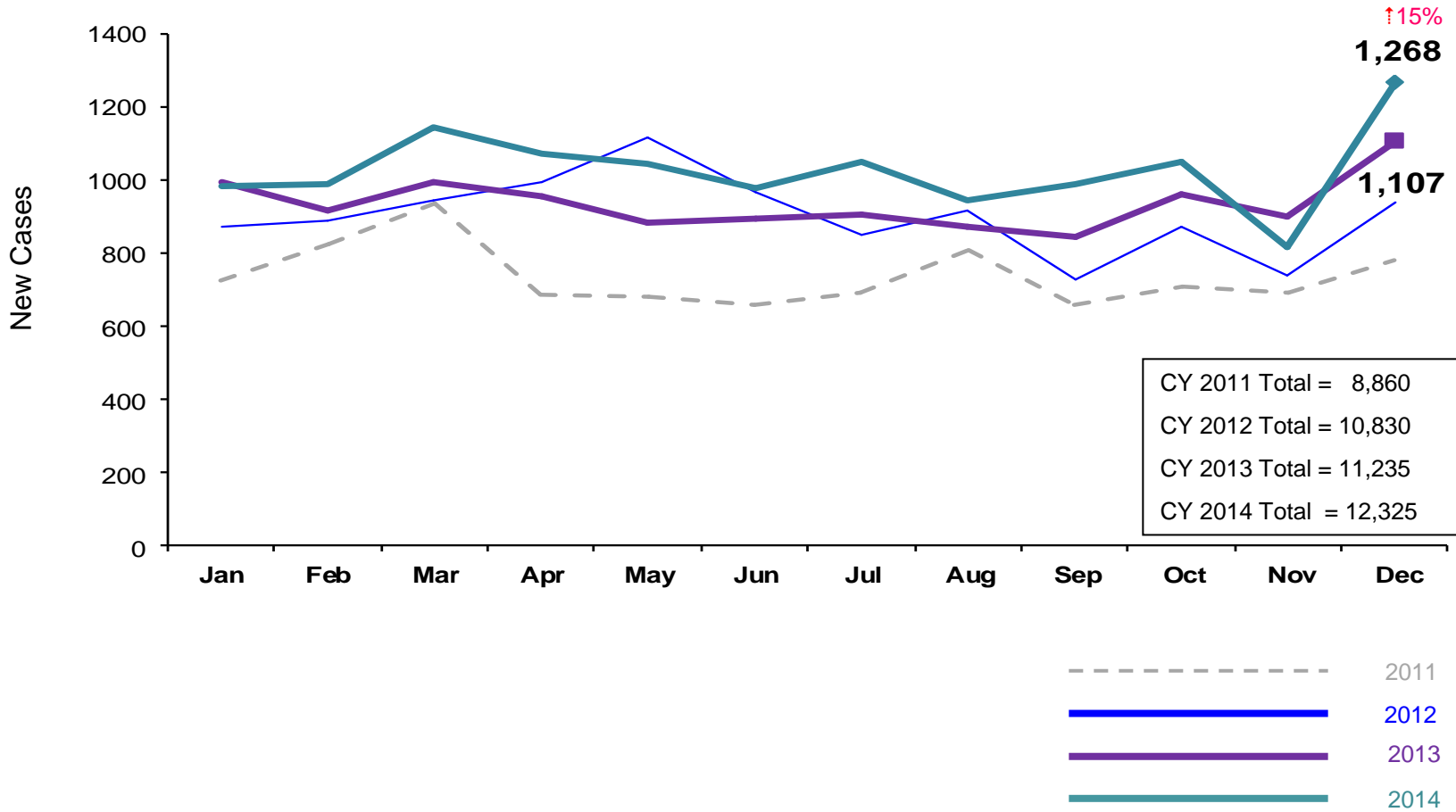
August – December 2014 (End of Month)

Converted EBM, Intensive Family and Specialized Teen



New Preventive Cases*

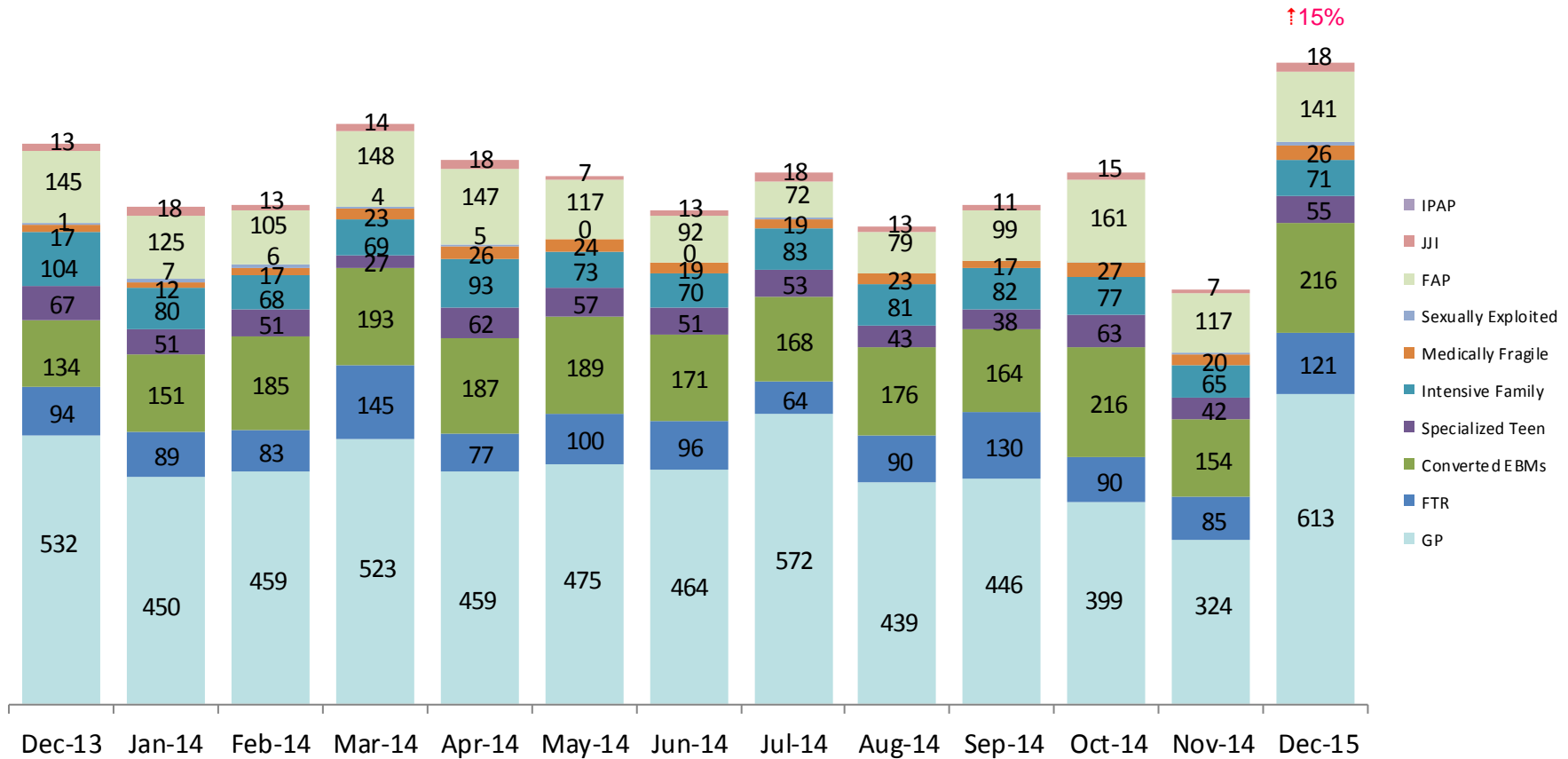
January 2011 – December 2014



*Notes: 1) New preventive cases do not include cases transferred from one preventive program to another. 2) Percentage change is December 2013 vs. December 2014. 3) See Pages 36 and 37 of the Appendix for supporting data.

New Preventive Cases* by Program Type

December 2013 – December 2014

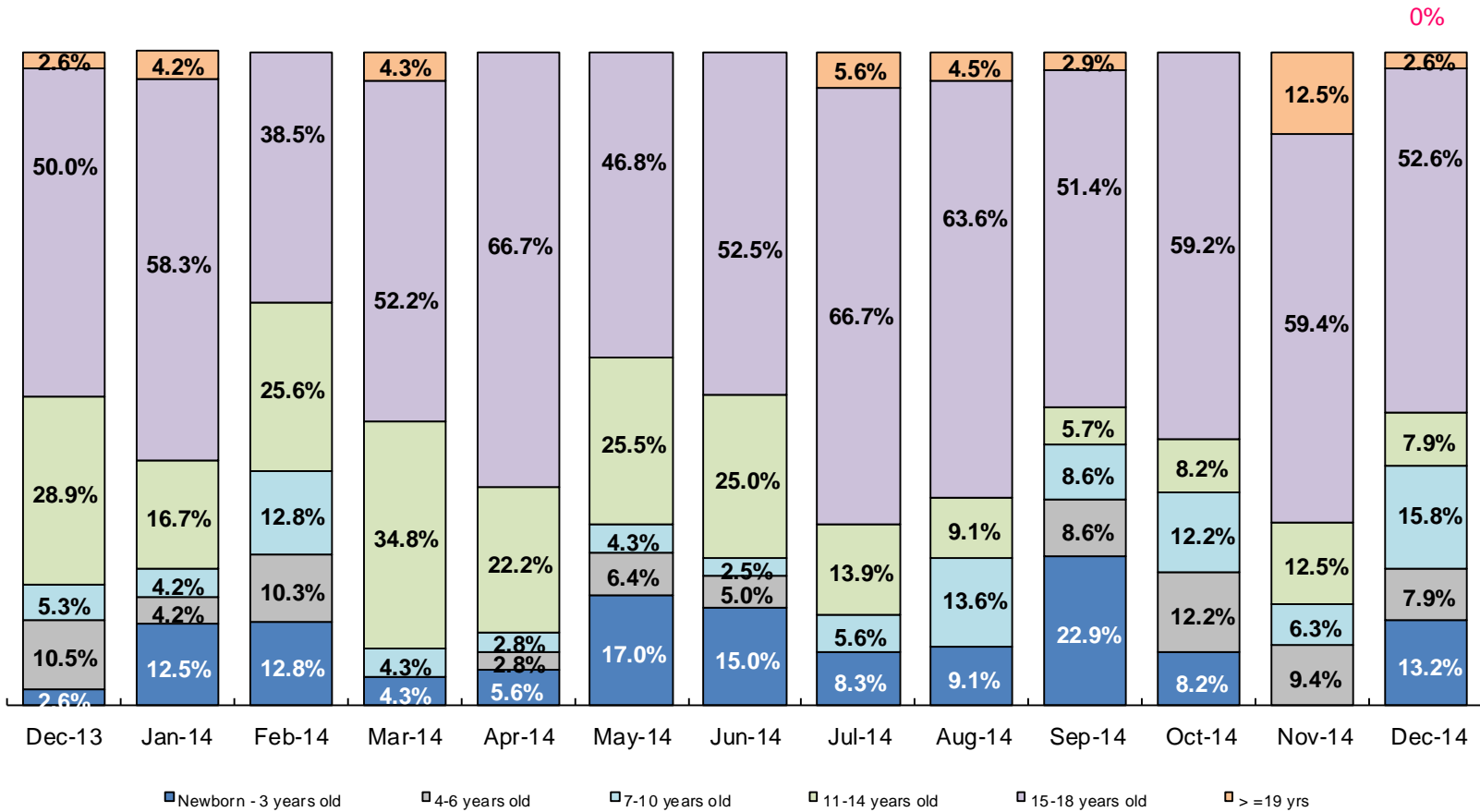


	Dec 2013	Jan 2014	Feb 2014	Mar 2014	Apr 2014	May 2014	Jun 2014	Jul 2014	Aug 2014	Sep 2014	Oct 2014	Nov 2014	Dec 2014
Number of New Preventive Cases	1,107	983	987	1,146	1,074	1,042	976	1,050	944	987	1,050	818	1,268

Notes: 1) New preventive cases do not include cases transferred from one preventive program to another. 2) Percentage change is December 2013 vs. December 2014.

Children's Center Population by Age

December 2013 – December 2014

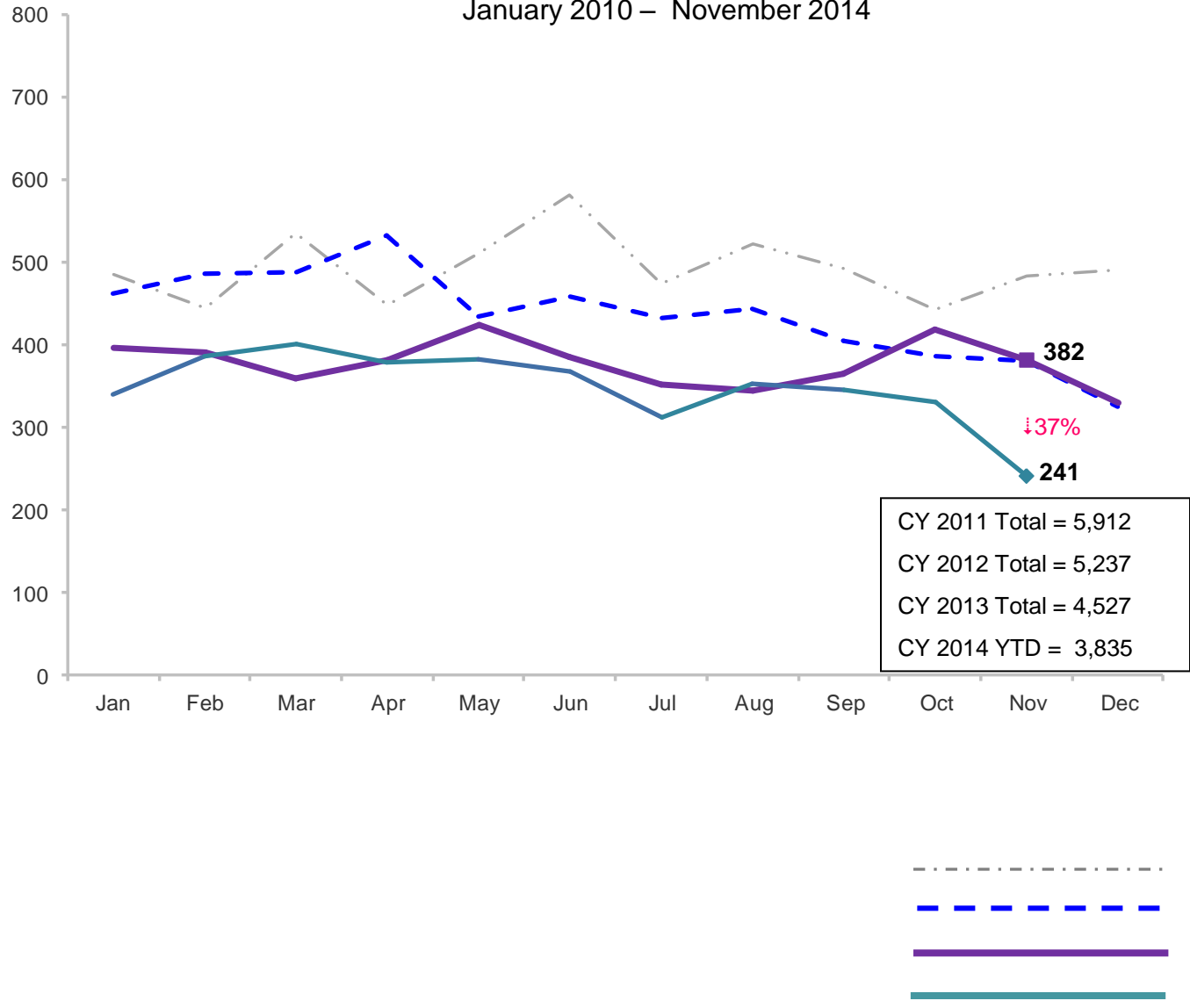


	Dec 2013	Jan 2014	Feb 2014	Mar 2014	Apr 2014	May 2014	Jun 2014	Jul 2014	Aug 2014	Sep 2014	Oct 2014	Nov 2014	Dec 2014
Number of Children	38	24	39	23	36	47	40	36	22	35	49	32	38

Note: Percentage change is December 2013 vs. December 2014.

Total Monthly Placements

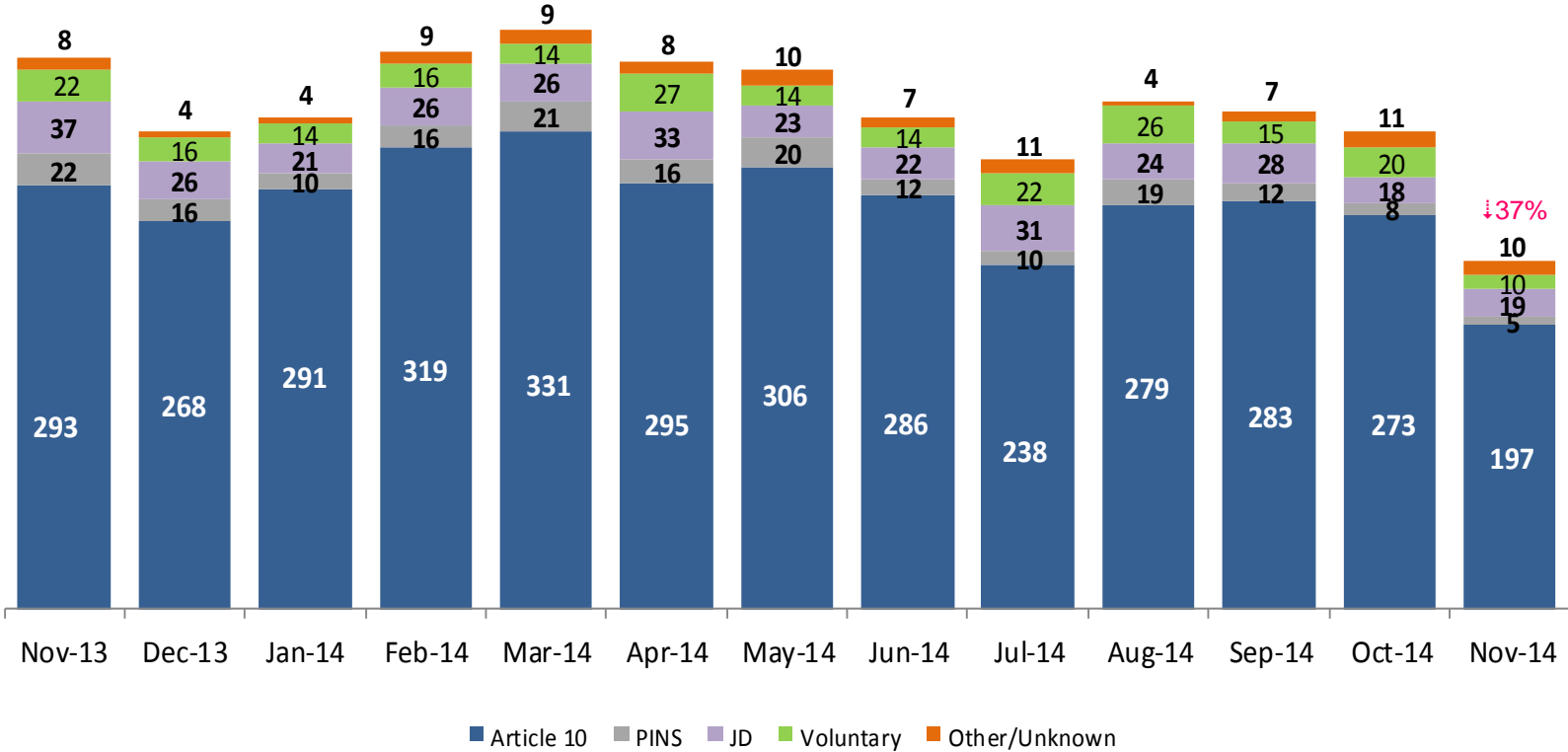
January 2010 – November 2014



Note: Percentage change is November 2013 vs. November 2014.

Reason for Initial Placements into Foster Care

November 2013 – November 2014

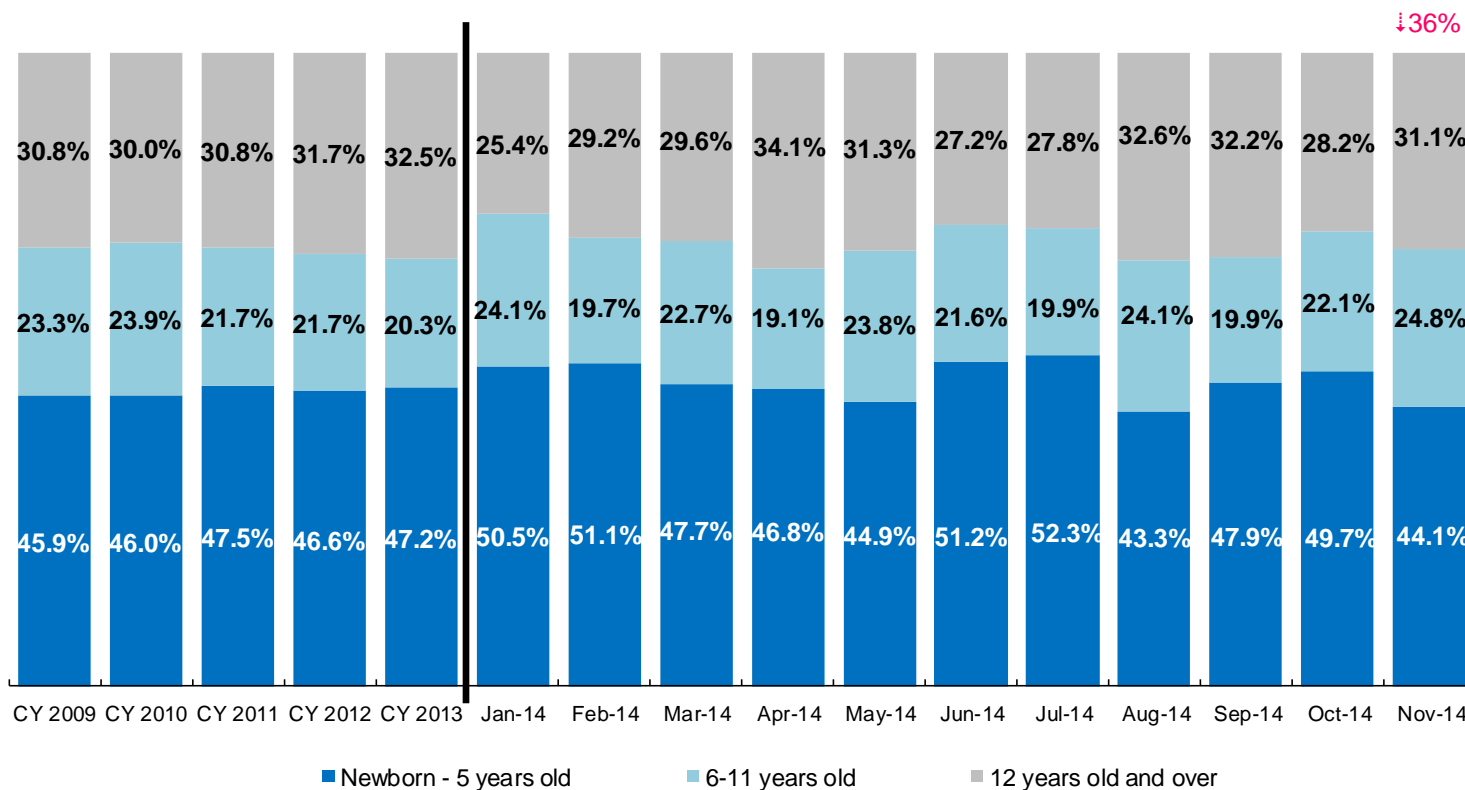


	Nov 2013	Dec 2013	Jan 2014	Feb 2014	Mar 2014	April 2014	May 2014	Jun 2014	Jul 2014	Aug 2014	Sep 2014	Oct 2014	Nov 2014
Number of Placements	382	330	340	386	401	379	382	367	312	352	345	330	241

Note: Percentage change is November 2013 vs. November 2014.

Placements* by Age

CY 2009 – CY 2013 and January – November 2014

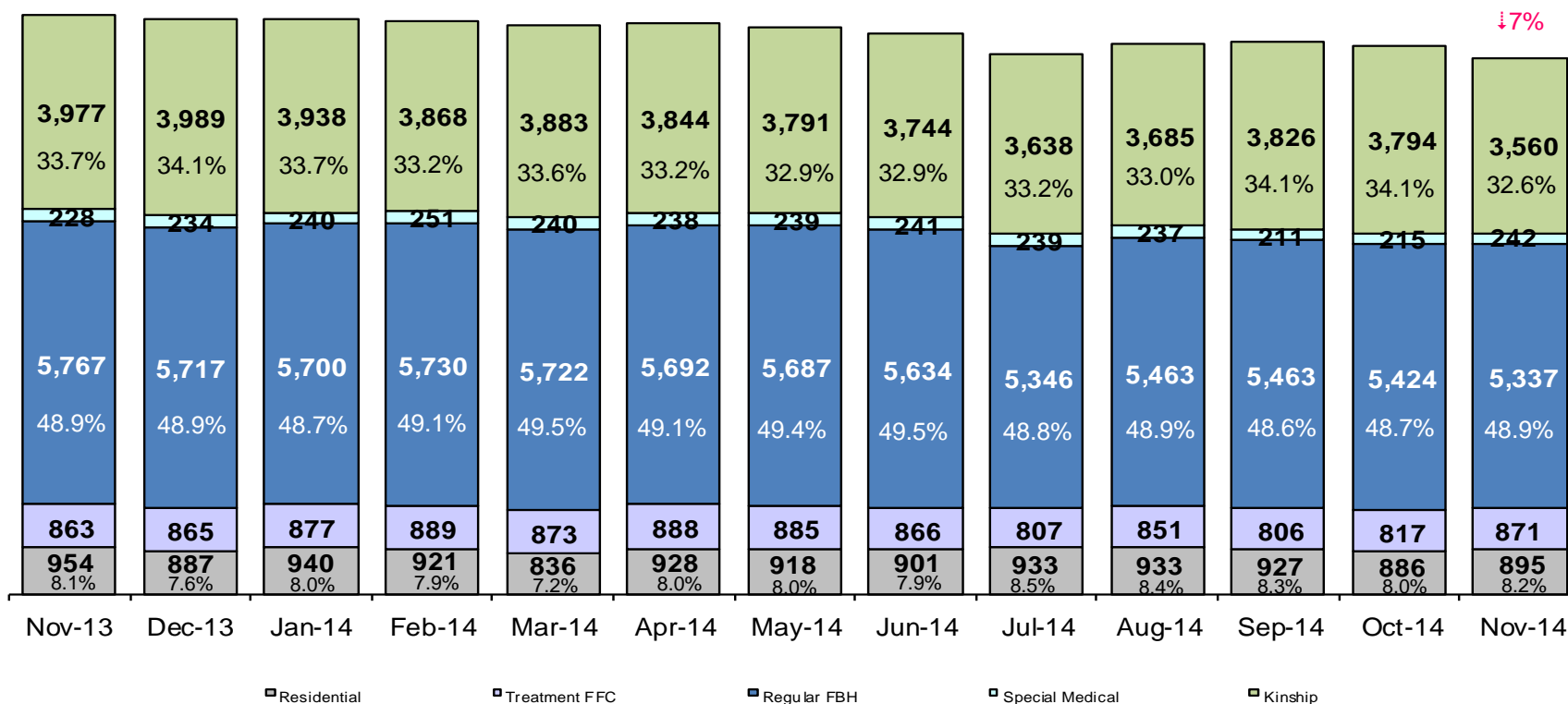


	CY 2008	CY 2009	CY 2010	CY 2011	CY 2012	CY 2013	Jan 2014	Feb 2014	Mar 2014	Apr 2014	May 2014	Jun 2014	Jul 2014	Aug 2014	Sep 2014	Oct 2014	Nov 2014
Placements	4,764	5,657	5,842	4,941	4,823	4,170	319	360	375	346	361	342	281	328	317	312	222

*Excludes JD placements.

Note: Percentage change is November 2013 vs. November 2014.

Children in Foster Care* November 2013 – November 2014 (end of month)

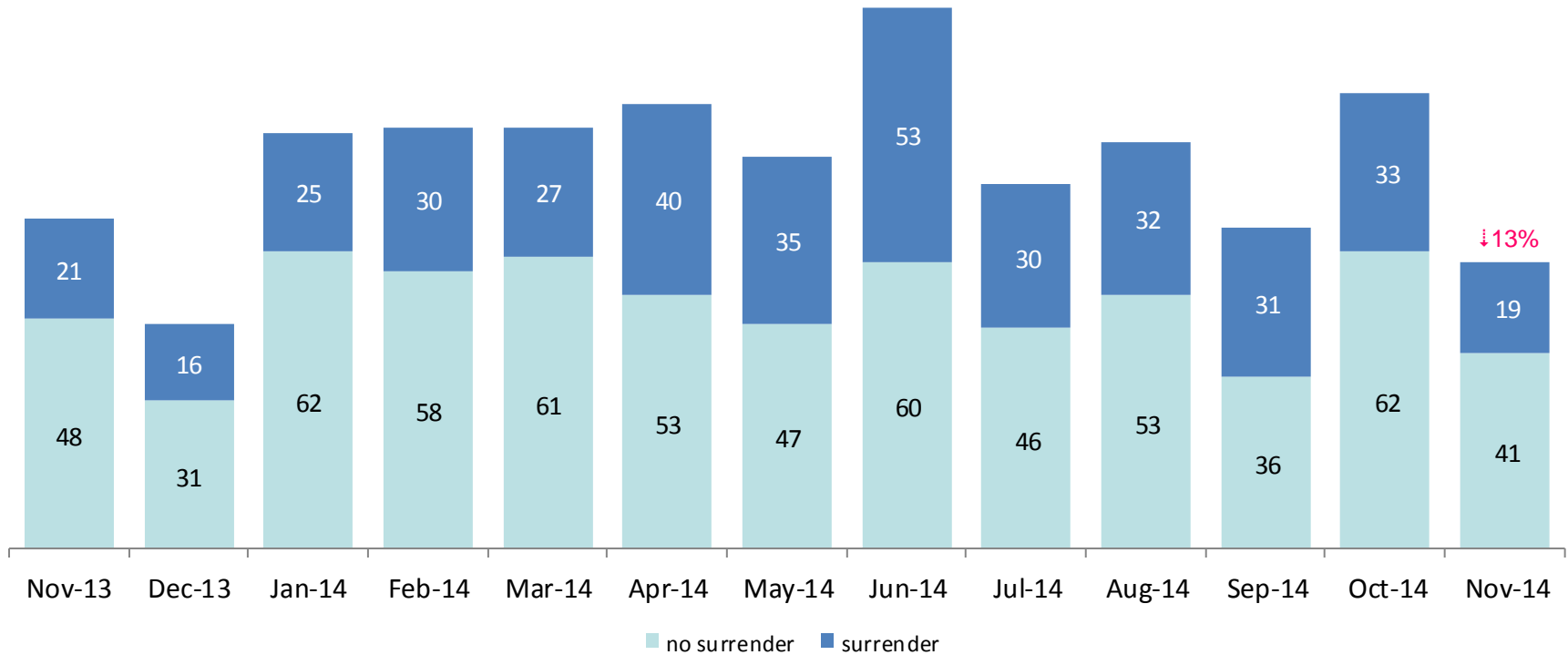


	Nov 2013	Dec 2013	Jan 2014	Feb 2014	Mar 2014	Apr 2014	May 2014	Jun 2014	Jul 2014	Aug 2014	Sep 2014	Oct 2014	Nov 2014
Number in Foster Care	11,789	11,692	11,695	11,659	11,554	11,590	11,520	11,386	10,963	11,169	11,233	11,136	10,905

*Excludes JD placements and includes approximately 400 young children who are living in foster homes or residential care facilities with their mothers who are in foster care (8D children).

Note: Percentage change is November 2013 vs. November 2014.

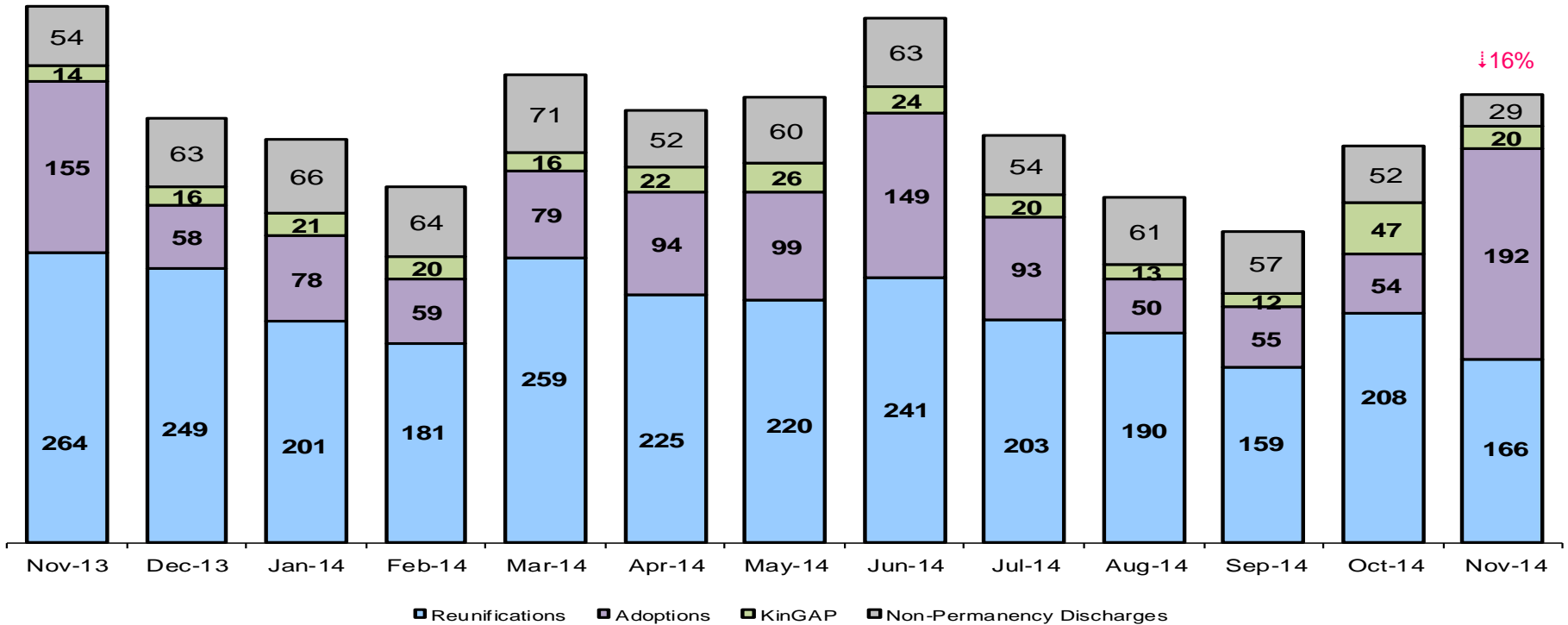
Children Freed for Adoption, Surrender by at Least One Parent November 2013 – November 2014



	Nov 2013	Dec 2013	Jan 2014	Feb 2014	Mar 2014	Apr 2014	May 2014	Jun 2014	Jul 2014	Aug 2014	Sep 2014	Oct 2014	Nov 2014
Number Freed for Adoption	69	47	87	88	88	93	82	113	76	85	67	95	60

Note: Percentage change is for the number of children freed for adoption during November 2013 vs. November 2014.

Permanency and Non-Permanency* Discharges from Foster Care** November 2013 – November 2014



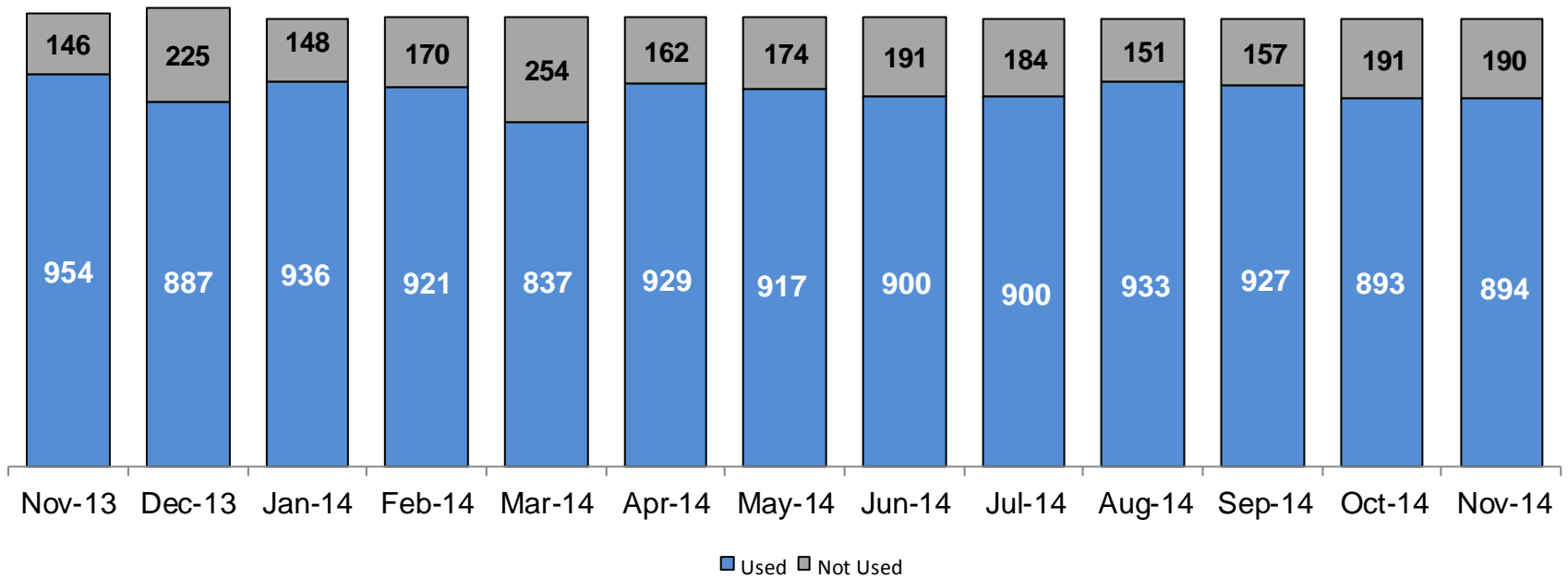
	Nov 2013	Dec 2013	Jan 2014	Feb 2014	Mar 2014	Apr 2014	May 2014	Jun 2014	Jul 2014	Aug 2014	Sep 2014	Oct 2014	Nov 2014
Number of Discharges	487	386	366	324	425	393	405	477	370	314	283	361	407

*Non-permanency discharges include AWOL, APPLA , other discharge destinations such as mental institutions and correctional facilities and discharges with unspecified destinations.

**Excludes discharges of youth who were in JD status at any time during their foster care spell.

Note: Percentage change is November 2013 vs. November 2014.

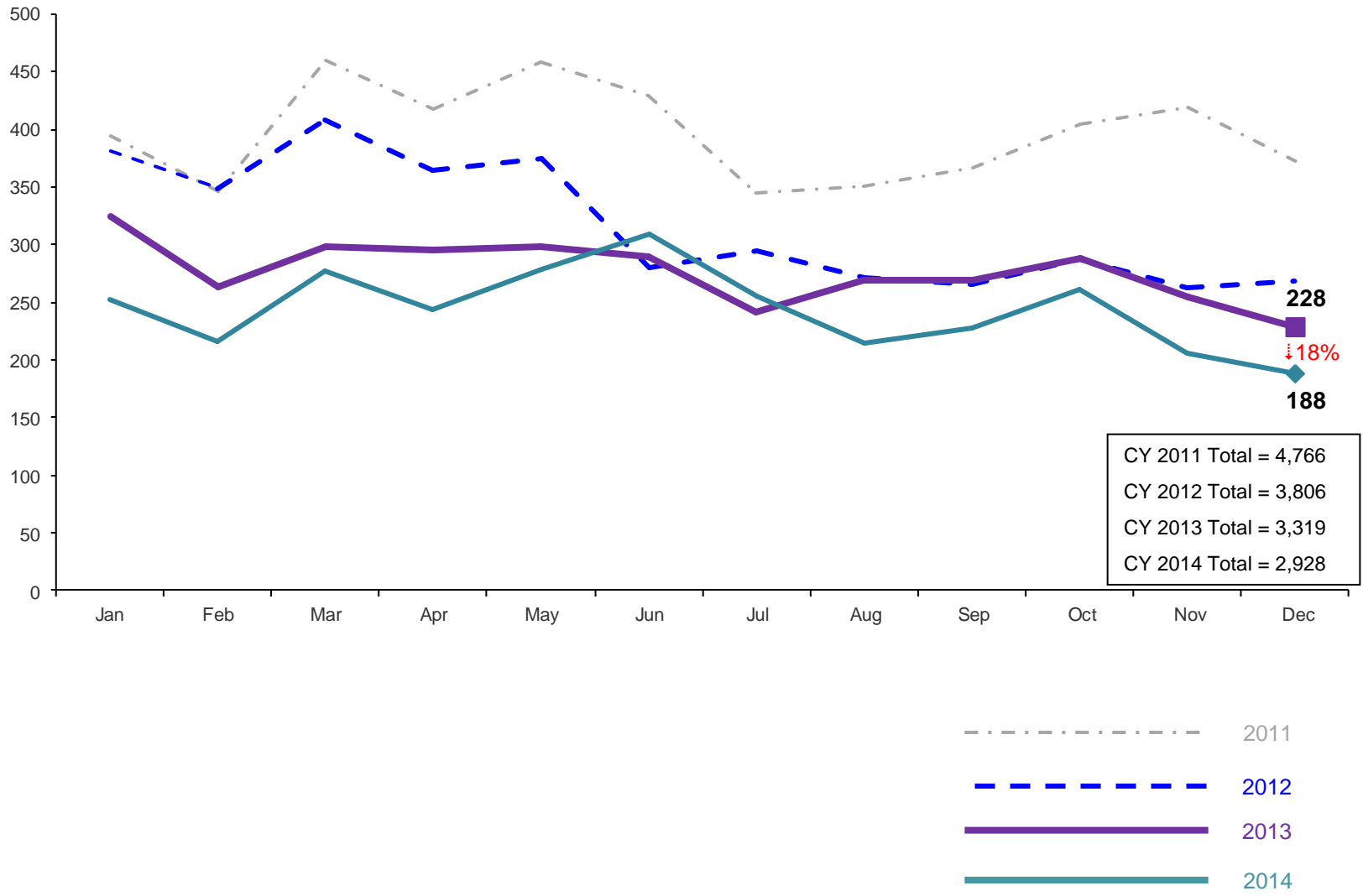
Residential Care Capacity and Utilization, November 2013 – November 2014



	Oct 2013	Nov 2013	Dec 2013	Jan 2014	Feb 2014	Mar 2014	Apr 2014	May 2014	Jun 2014	Jul 2014	Aug 2014	Sep 2014	Oct 2014	Nov 2014
Capacity	1,104	1,100	1,112	1,084	1,091	1,091	1,091	1,091	1,091	1,084	1,084	1,084	1,084	1,084

Total Monthly Admissions to Detention

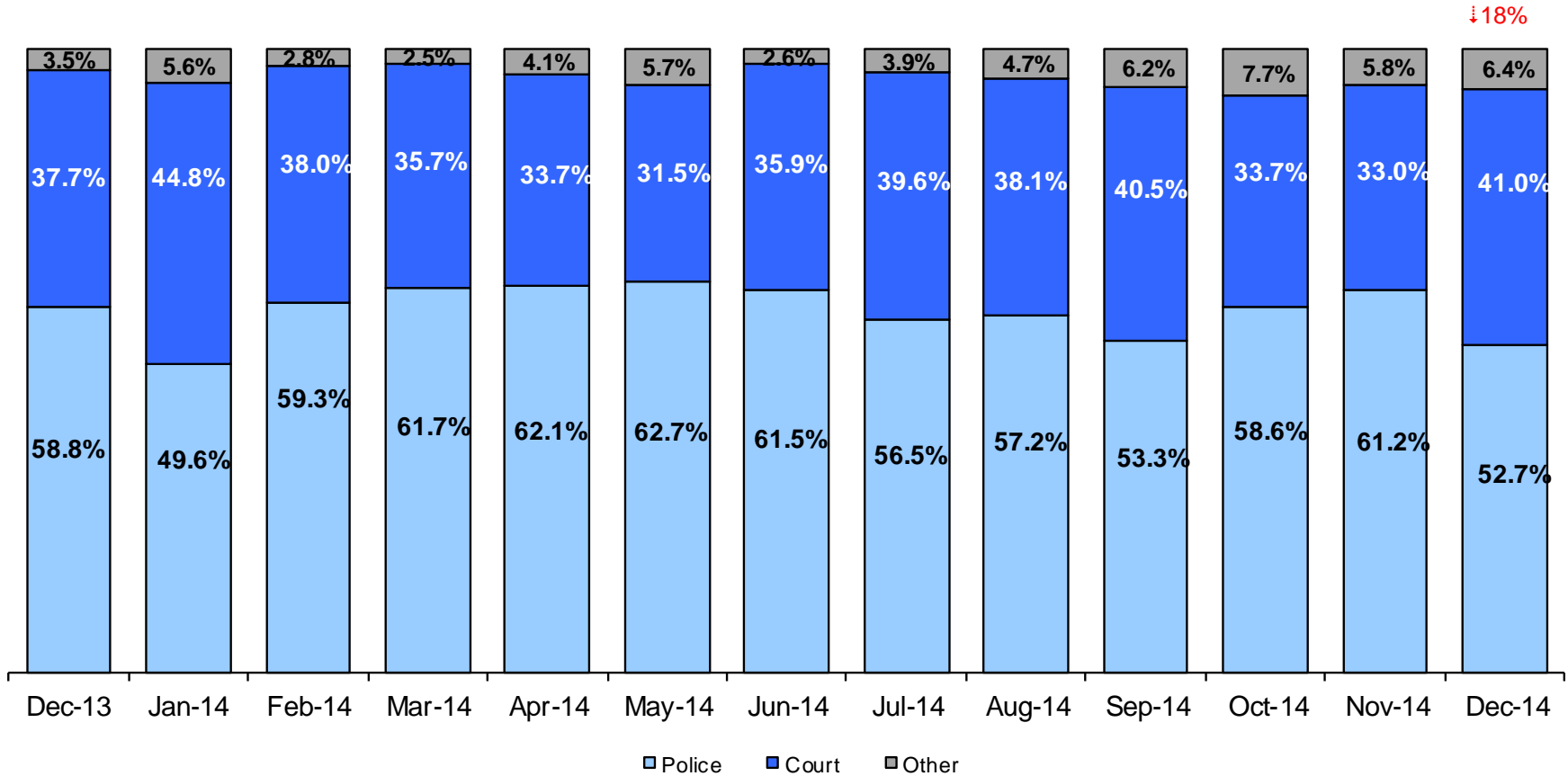
January 2011 – December 2014 (Monthly Total)



Note: Percentage change is December 2013 vs. December 2014.

Admit Authority on Admissions

December 2013 - December 2014 (Monthly Total)



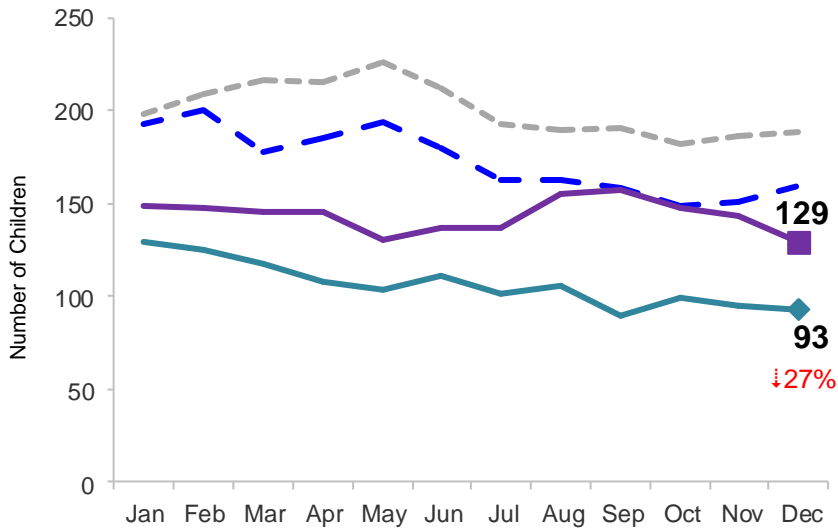
	Dec 2013	Jan 2014	Feb 2014	Mar 2014	Apr 2014	May 2014	Jun 2014	Jul 2014	Aug 2014	Sep 2014	Oct 2014	Nov 2014	Dec 2014
Number of Admissions	228	252	216	277	243	279	309	255	215	227	261	206	188

Notes: 1) Other Admit Authority includes the Sheriff Department, Department of Corrections and ACS. 2) Percentage change is December 2013 vs. December 2014.

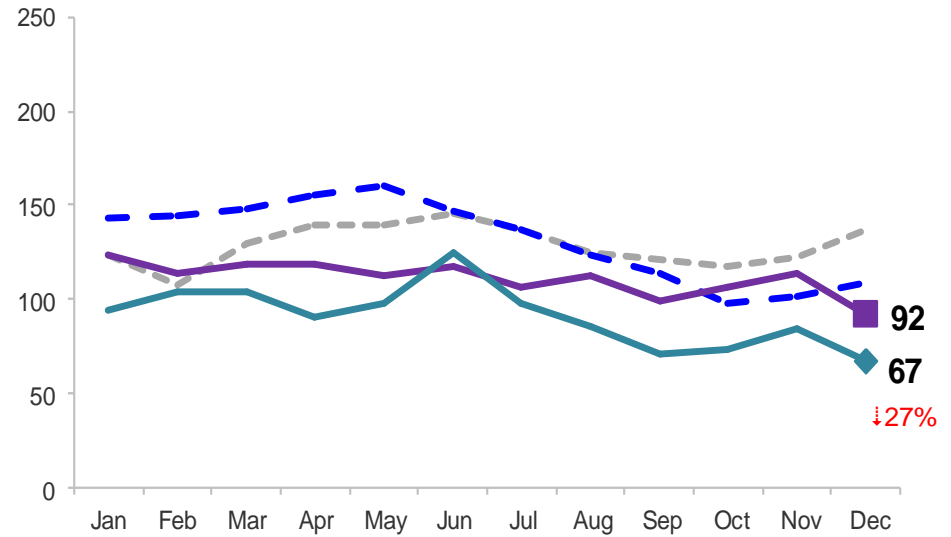
Monthly Average Daily Population

January 2011 – December 2014

Secure Detention



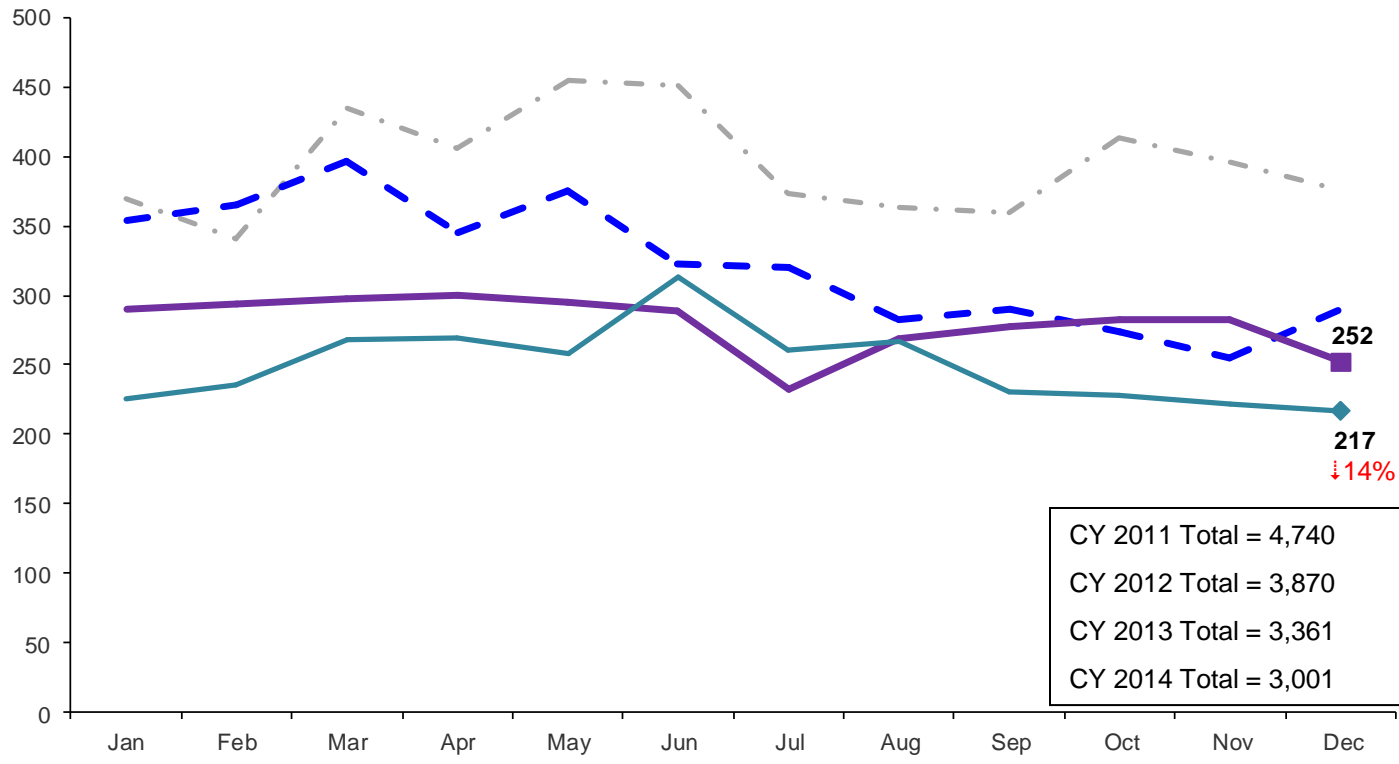
Non-Secure Detention



Note: Percentage change is December 2013 vs. December 2014.

Total Monthly Releases from Detention

January 2011 – December 2014 (Monthly Total)

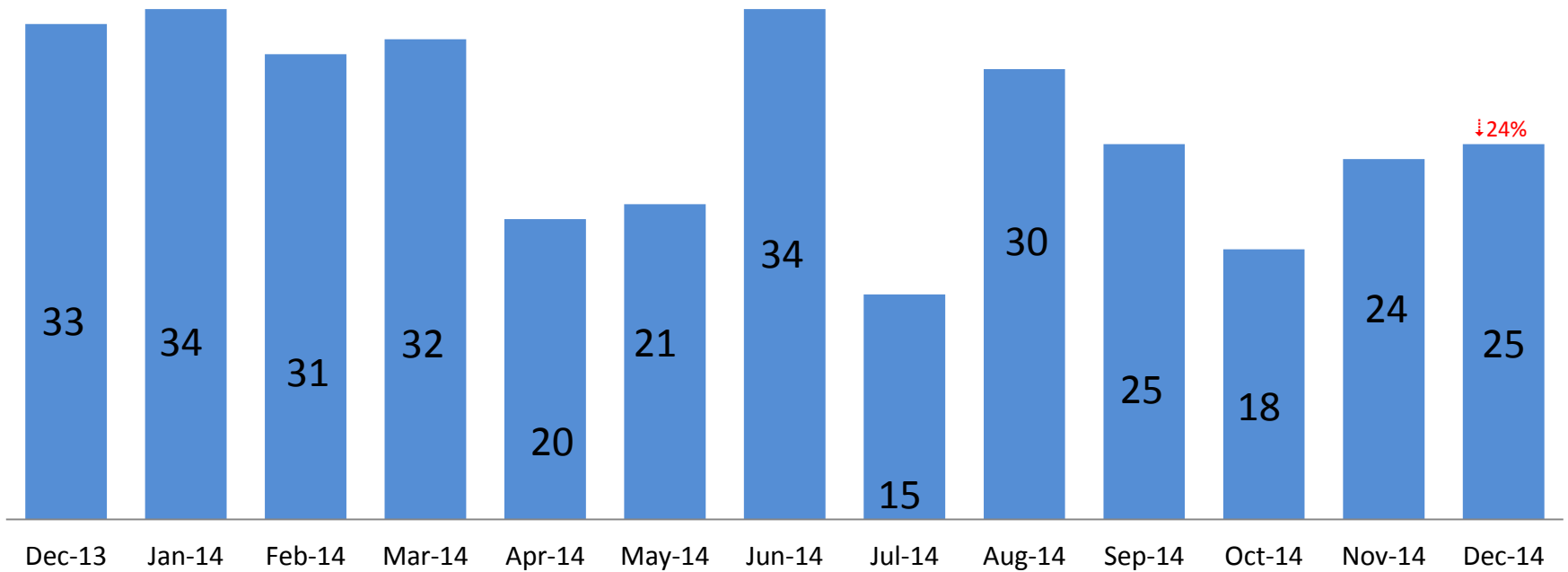


CY 2011 Total = 4,740
 CY 2012 Total = 3,870
 CY 2013 Total = 3,361
 CY 2014 Total = 3,001



Note: Percentage change is December 2013 vs. December 2014.

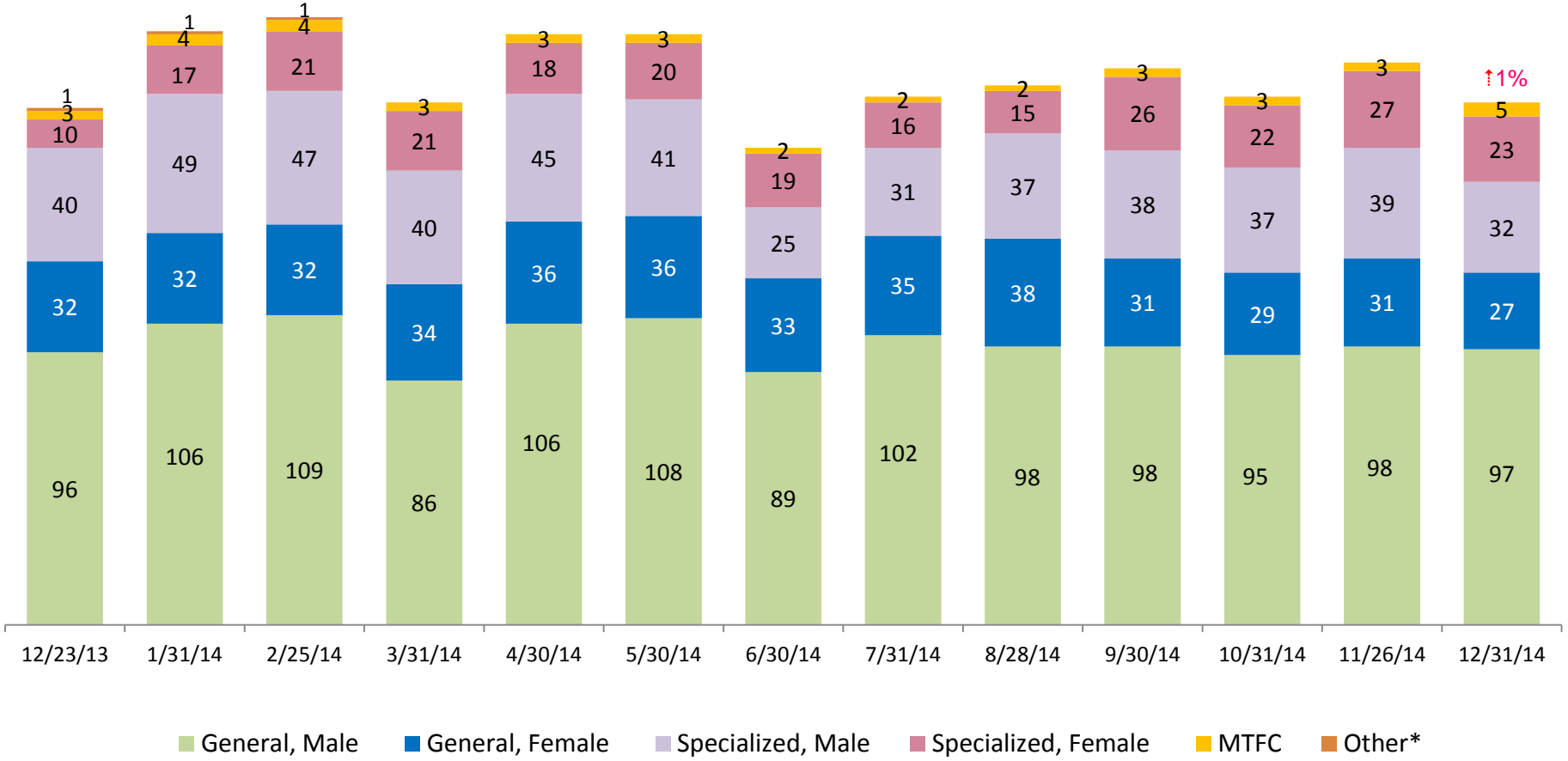
ACS NSP Intakes December 2013 – December 2014



Note: Percentage change is December 2013 vs. December 2014.

ACS Non-Secure Placement, in 24 hour Care

December 2013 – December 2014 (Point-in-Time)

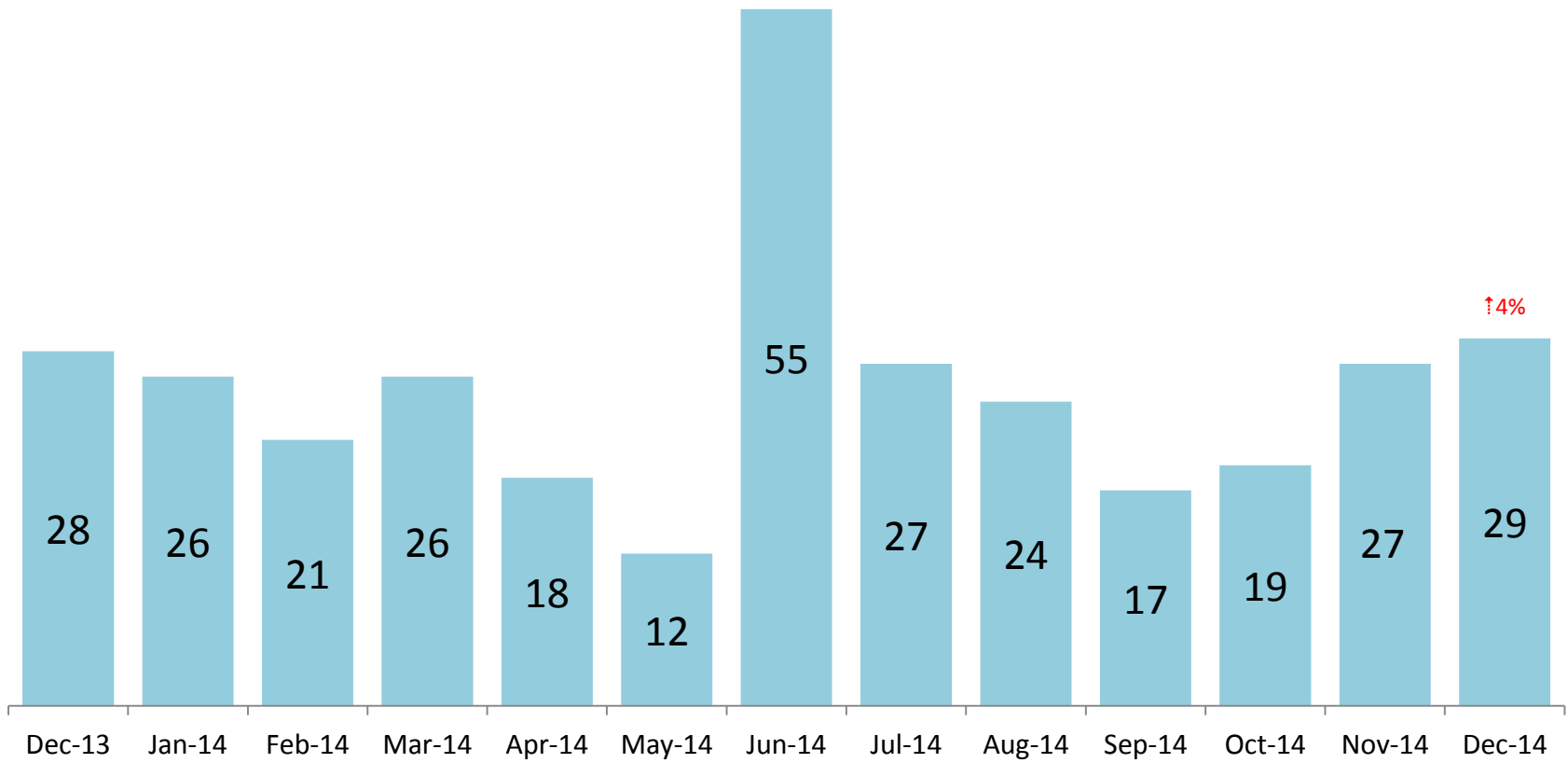


	12/23/13	1/31/14	2/25/14	3/31/14	4/30/14	5/30/14	6/30/14	7/31/14	8/28/14	9/30/14	10/31/14	11/26/14	12/31/14
Number in Placement	182	209	214	184	208	208	168	186	190	196	186	198	184

*Other includes NYC youth in voluntary placements with Lincoln Hall, MercyFirst and Graham Windham.

Note: Percentage change is December 2013 vs. December 2014.

Releases from NSP to Aftercare December 2013 – December 2014



Note: Percentage change is December 2013 vs. December 2014.

Appendix

Figure 1: SCR Intakes by Borough, OCT 13 – DEC 13 and OCT 14 – DEC 14

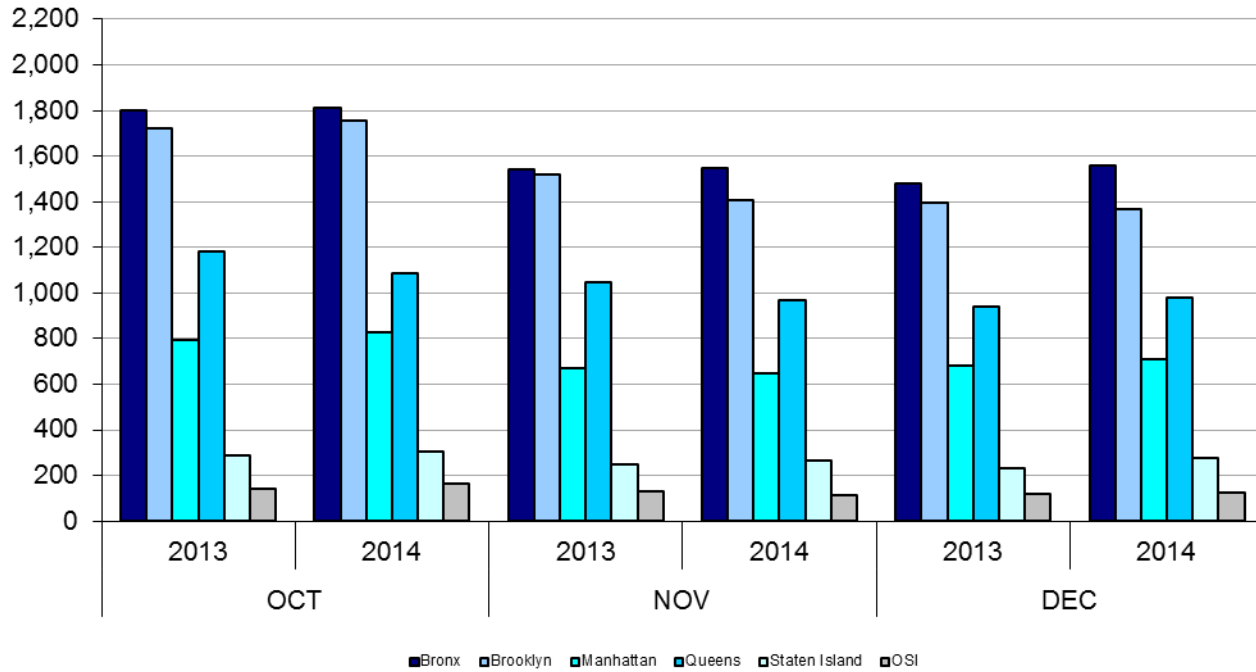


TABLE 1 - SCR Intake Changes by Borough, OCT 13 – DEC 13 and OCT 14 – DEC 14

Month	Year	Bronx	Brooklyn	Manhattan	Queens	Staten Island	OSI	Other	Total
OCT	2013	1,802	1,721	796	1,183	286	141	147	6,076
	2014	1,814	1,753	826	1,088	305	166	165	6,117
	% Change	0.7%	1.9%	3.8%	-8.0%	6.6%	17.7%	12.2%	0.7%
NOV	2013	1,543	1,520	672	1,047	247	131	132	5,292
	2014	1,548	1,409	647	971	266	114	90	5,045
	% Change	0.3%	-7.3%	-3.7%	-7.3%	7.7%	-13.0%	-31.8%	-4.7%
DEC	2013	1,481	1,395	684	940	229	121	135	4,985
	2014	1,559	1,370	711	980	277	125	126	5,148
	% Change	5.3%	-1.8%	3.9%	4.3%	21.0%	3.3%	-6.7%	3.3%
Total	2013	4,826	4,636	2,152	3,170	762	393	414	16,353
	2014	4,921	4,532	2,184	3,039	848	405	381	16,310
	% Change	2.0%	-2.2%	1.5%	-4.1%	11.3%	3.1%	-8.0%	-0.3%

Figure 2: Citywide SCR Intakes by Reporter Group, OCT 13 – DEC 13 and OCT 14 – DEC 14

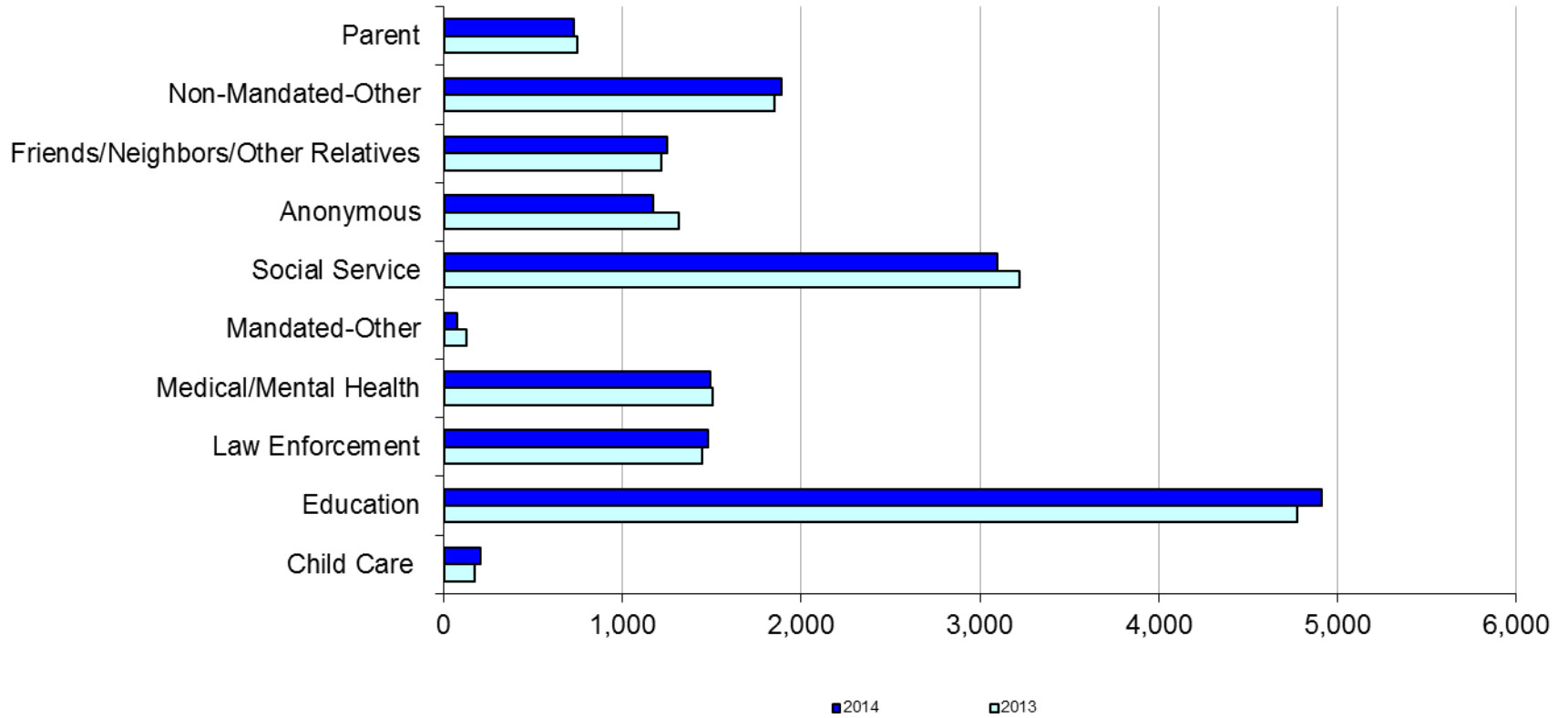
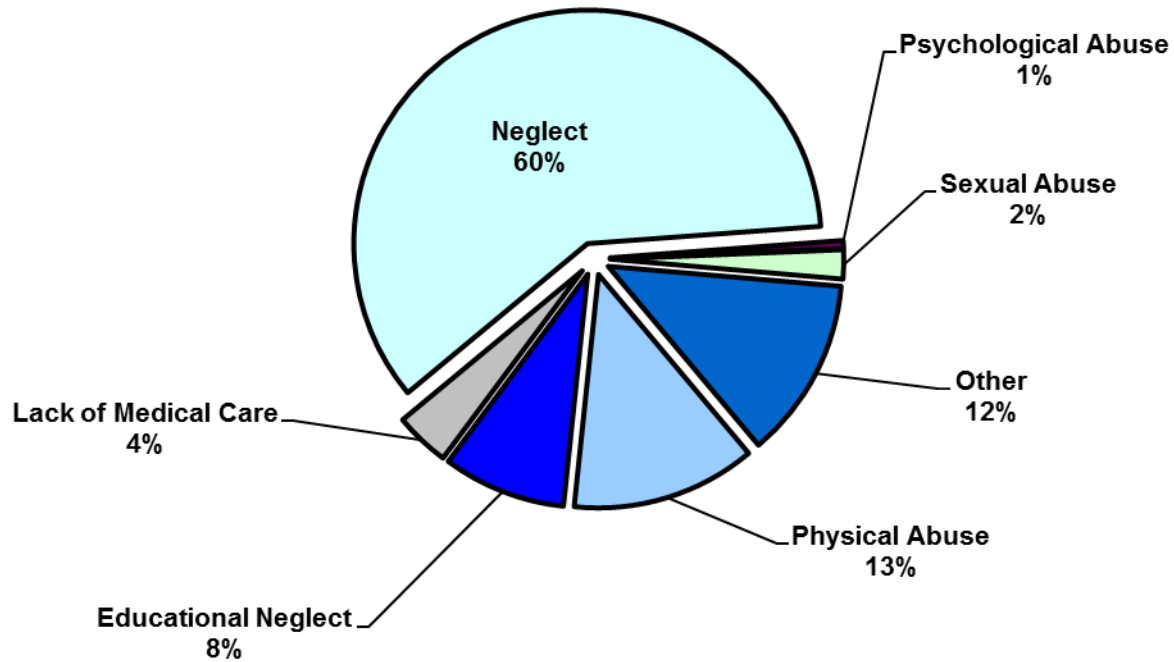


TABLE 2 - SCR Intakes by Reporter Group, OCT 13 – DEC 13 and OCT 14 – DEC 14

Year	Child Care/ Substitute Care Personnel	Educational Personnel	Law Enforcement	Medical/ Mental Health Personnel	Mandated- Other	Social Service Personnel	Anonymous	Friends/ Neighbors/ Other Relatives	Non- Mandated- Other	Parent	Foster Parent	Total
Bronx												
2013	46	1,458	383	443	28	1,006	330	338	590	201	0	4,823
2014	58	1,527	341	427	22	960	360	406	623	191	2	4,917
% Change	26.1%	4.7%	-11.0%	-3.6%	-21.4%	-4.6%	9.1%	20.1%	5.6%	-5.0%	--	1.9%
Brooklyn												
2013	51	1,382	379	403	43	853	420	394	512	196	0	4,633
2014	49	1,438	430	379	24	770	346	368	530	193	1	4,528
% Change	-3.9%	4.1%	13.5%	-6.0%	-44.2%	-9.7%	-17.6%	-6.6%	3.5%	-1.5%	--	-2.3%
Manhattan												
2013	20	502	231	220	16	487	157	153	280	84	1	2,151
2014	37	525	272	233	11	459	145	168	258	73	0	2,181
% Change	85.0%	4.6%	17.7%	5.9%	-31.3%	-5.7%	-7.6%	9.8%	-7.9%	-13.1%	--	1.4%
Queens												
2013	23	1,076	299	277	24	567	259	222	295	126	1	3,169
2014	26	1,033	269	280	11	594	197	203	299	127	0	3,039
% Change	13.0%	-4.0%	-10.0%	1.1%	-54.2%	4.8%	-23.9%	-8.6%	1.4%	0.8%	--	-4.1%
Staten Island												
2013	5	268	55	79	4	101	92	59	56	43	0	762
2014	8	314	57	80	3	118	84	66	64	52	1	847
% Change	60.0%	17.2%	3.6%	1.3%	-25.0%	16.8%	-8.7%	11.9%	14.3%	20.9%	--	11.2%
OSI												
2013	19	47	15	34	7	81	36	23	81	50	0	393
2014	24	44	20	43	4	84	28	20	80	54	4	405
% Change	26.3%	-6.4%	33.3%	26.5%	-42.9%	3.7%	-22.2%	-13.0%	-1.2%	8.0%	--	3.1%
Other												
2013	6	44	84	49	3	125	19	29	34	47	0	440
2014	5	32	87	50	1	112	14	20	35	35	2	393
% Change	-16.7%	-27.3%	3.6%	2.0%	-66.7%	-10.4%	-26.3%	-31.0%	2.9%	-25.5%	--	-10.7%
Citywide												
2013	170	4,777	1,446	1,505	125	3,220	1,313	1,218	1,848	747	2	16,371
2014	207	4,913	1,476	1,492	76	3,097	1,174	1,251	1,889	725	10	16,310
% Change	21.8%	2.8%	2.1%	-0.9%	-39.2%	-3.8%	-10.6%	2.7%	2.2%	-2.9%	400.0%	-0.4%

Figure 3: SCR Allegations, OCT 14 – DEC 14



Total Allegations = 40,497

TABLE 3 - SCR Allegations, OCT 13 - DEC 13 and OCT 14 - DEC 14

Year	Physical Abuse	Educational Neglect	Lack of Medical Care	Neglect	Psychological Abuse	Sexual Abuse	Other	Total
Bronx								
2013	1,331	1,302	556	7,384	72	218	1,582	12,445
2014	1,447	1,307	487	7,745	57	253	1,590	12,886
% Change	8.7%	0.4%	-12.4%	4.9%	-20.8%	16.1%	0.5%	3.5%
Brooklyn								
2013	1,490	1,184	456	7,183	49	215	1,518	12,095
2014	1,498	1,042	434	6,822	53	244	1,345	11,438
% Change	0.5%	-12.0%	-4.8%	-5.0%	8.2%	13.5%	-11.4%	-5.4%
Manhattan								
2013	501	418	191	2778	21	80	593	4,582
2014	507	371	181	2708	23	68	560	4,418
% Change	1.2%	-11.2%	-5.2%	-2.5%	9.5%	-15.0%	-5.6%	-3.6%
Queens								
2013	1,116	456	271	4,307	59	122	969	7,300
2014	1,067	448	271	4,082	56	139	876	6,939
% Change	-4.4%	-1.8%	0.0%	-5.2%	-5.1%	13.9%	-9.6%	-4.9%
Staten Island								
2013	204	187	59	1,134	13	45	320	1,962
2014	272	183	73	1,260	19	35	314	2,156
% Change	33.3%	-2.1%	23.7%	11.1%	46.2%	-22.2%	-1.9%	9.9%
OSI								
2013	307	56	56	1,015	4	35	157	1,630
2014	261	49	53	1,036	7	49	183	1,638
% Change	-15.0%	-12.5%	-5.4%	2.1%	75.0%	40.0%	16.6%	0.5%
Other								
2013	112	72	42	627	6	23	223	1,105
2014	119	48	39	584	3	25	204	1,022
% Change	6.3%	-33.3%	-7.1%	-6.9%	-50.0%	8.7%	-8.5%	-7.5%
Citywide								
2013	5,061	3,675	1,631	24,428	224	738	5,362	41,119
2014	5,171	3,448	1,538	24,237	218	813	5,072	40,497
% Change	2.2%	-6.2%	-5.7%	-0.8%	-2.7%	10.2%	-5.4%	-1.5%

**TABLE 4 - Purchased Preventive Cases
Opened and Closed
January 2012 to December 2014**

Month	Opened Cases	Closed Cases
2012		
Jan-12	870	629
Feb-12	889	835
Mar-12	944	991
Apr-12	997	870
May-12	1,117	979
Jun-12	965	869
Jul-12	853	979
Aug-12	917	1,007
Sep-12	727	900
Oct-12	875	915
Nov-12	738	702
Dec-12	938	871
2013		
Jan-13	960	884
Feb-13	873	916
Mar-13	962	1,171
Apr-13	940	988
May-13	864	1,337
Jun-13	863	780
Jul-13	868	1,004
Aug-13	802	1,084
Sep-13	844	724
Oct-13	933	765
Nov-13	901	685
Dec-13	1,106	552
2014		
Jan-14	983	640
Feb-14	987	679
Mar-14	1,146	874
Apr-14	1,074	896
May-14	1,042	888
Jun-14	976	762
Jul-14	1,050	1,077
Aug-14	944	943
Sep-14	987	705
Oct-14	1,050	819
Nov-14	818	638
Dec-14	1,268	721

**Table 5 - Referrals to Purchased Preventive Services by Source
January 2012 to December 2014**

Month	Total Referrals	Division of Child Protection	Foster Care Agencies	PPRS Transfer	School	Self	Other Sources*
2012							
Jan-12	1,431	66.5%	0.7%	8.5%	3.6%	3.8%	17.0%
Feb-12	1,043	78.2%	1.1%	9.0%	1.9%	6.7%	3.1%
Mar-12	1,525	73.6%	0.9%	6.0%	1.8%	3.9%	13.8%
Apr-12	1,370	72.8%	1.0%	9.4%	1.2%	4.2%	11.4%
May-12	1,463	70.9%	1.0%	7.6%	1.1%	4.4%	15.0%
Jun-12	1,279	73.8%	0.5%	5.9%	1.0%	4.7%	14.2%
Jul-12	1,308	77.4%	1.2%	7.0%	0.3%	3.7%	10.5%
Aug-12	1,391	74.0%	0.9%	11.7%	0.3%	2.9%	10.2%
Sep-12	1,110	70.5%	1.9%	9.6%	1.2%	5.0%	11.9%
Oct-12	1,159	61.1%	1.4%	12.6%	2.7%	4.9%	17.3%
Nov-12	1,106	67.0%	1.0%	9.9%	2.2%	4.7%	15.3%
Dec-12	1,206	68.7%	0.8%	5.8%	2.7%	5.6%	16.4%
CY 2012	15,391	71.3%	1.0%	8.5%	1.6%	4.5%	13.1%
2013							
Jan-13	1,474	74.1%	1.2%	7.3%	1.2%	3.7%	12.5%
Feb-13	1,308	75.8%	1.1%	8.0%	1.6%	2.9%	10.6%
Mar-13	1,270	73.5%	1.2%	6.7%	2.4%	3.9%	12.3%
Apr-13	1,421	77.9%	0.8%	7.4%	0.9%	3.0%	10.1%
May-13	1,320	68.4%	0.5%	10.2%	1.5%	3.8%	15.5%
Jun-13	953	69.2%	1.2%	9.4%	2.6%	5.0%	12.6%
Jul-13	1,014	66.3%	1.9%	14.4%	1.6%	3.9%	11.9%
Aug-13	1,212	70.5%	0.7%	11.8%	0.7%	4.7%	11.6%
Sep-13	1,262	64.0%	2.1%	11.3%	1.7%	6.7%	14.2%
Oct-13	1,319	61.0%	1.1%	9.0%	2.9%	7.5%	18.5%
Nov-13	1,249	55.9%	1.6%	10.5%	4.6%	9.2%	18.3%
Dec-13	1,464	62.2%	1.2%	8.2%	2.3%	9.2%	17.0%
CY 2013	15,266	68.3%	1.2%	9.4%	2.0%	5.3%	13.8%
2014							
Jan-14	1,537	70.0%	1.2%	6.6%	2.3%	5.8%	14.2%
Feb-14	1,334	69.7%	0.8%	8.4%	1.7%	5.5%	13.9%
Mar-14	1,612	70.0%	1.4%	8.6%	1.6%	5.3%	13.1%
Apr-14	1,525	70.2%	0.9%	7.6%	2.1%	3.7%	15.4%
May-14	1,580	74.4%	0.7%	8.3%	1.4%	5.2%	10.0%
Jun-14	1,550	78.6%	1.2%	6.3%	1.2%	3.2%	9.4%
Jul-14	1,659	79.6%	1.5%	6.7%	0.4%	4.2%	7.6%
Aug-14	1,395	72.2%	1.6%	10.8%	0.3%	4.9%	10.3%
Sep-14	1,597	49.4%	1.5%	7.6%	0.3%	4.5%	36.8%
Oct-14	1,634	68.2%	1.9%	10.0%	1.2%	4.6%	14.1%
Nov-14	1,311	66.4%	0.9%	14.3%	2.4%	3.9%	12.1%
Dec-14	1,785	71.1%	1.4%	8.8%	2.9%	4.8%	11.0%

*Other Community Sources includes the Department of Homeless Services, Family Court, FAP, Hospitals and Medical facilities, the NYC Housing Authority, PINS/DAS, Probation, and Sponsor Agencies.