

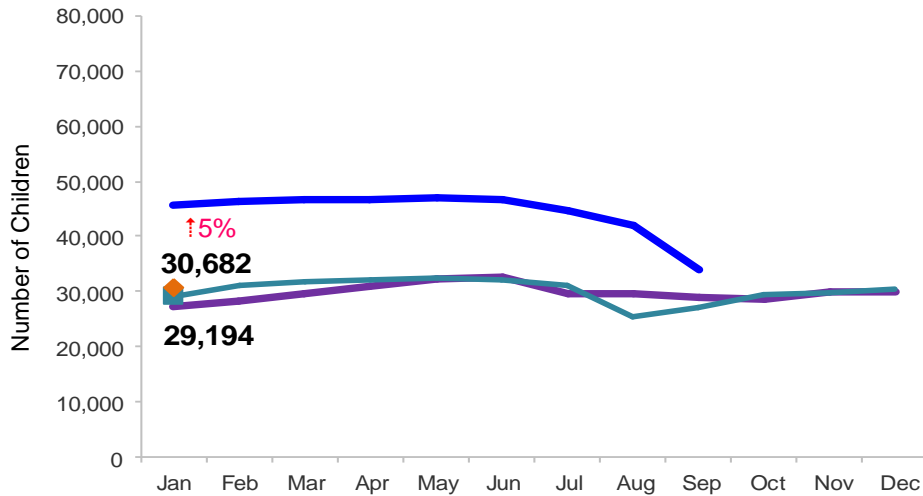


Flash

February 2015

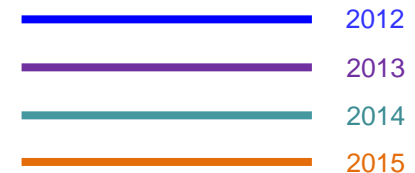
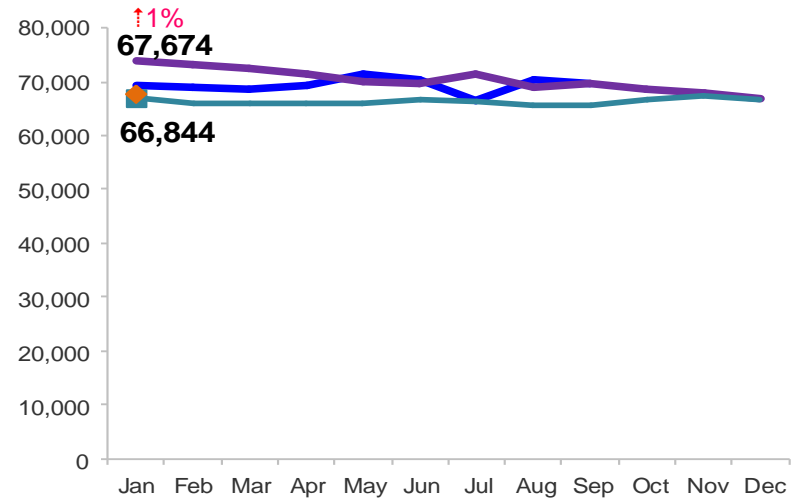
Children Enrolled in Contracted EarlyLearn Programs

January 2012 – January 2015 (End of Month)



Children Using Vouchers for Child Care

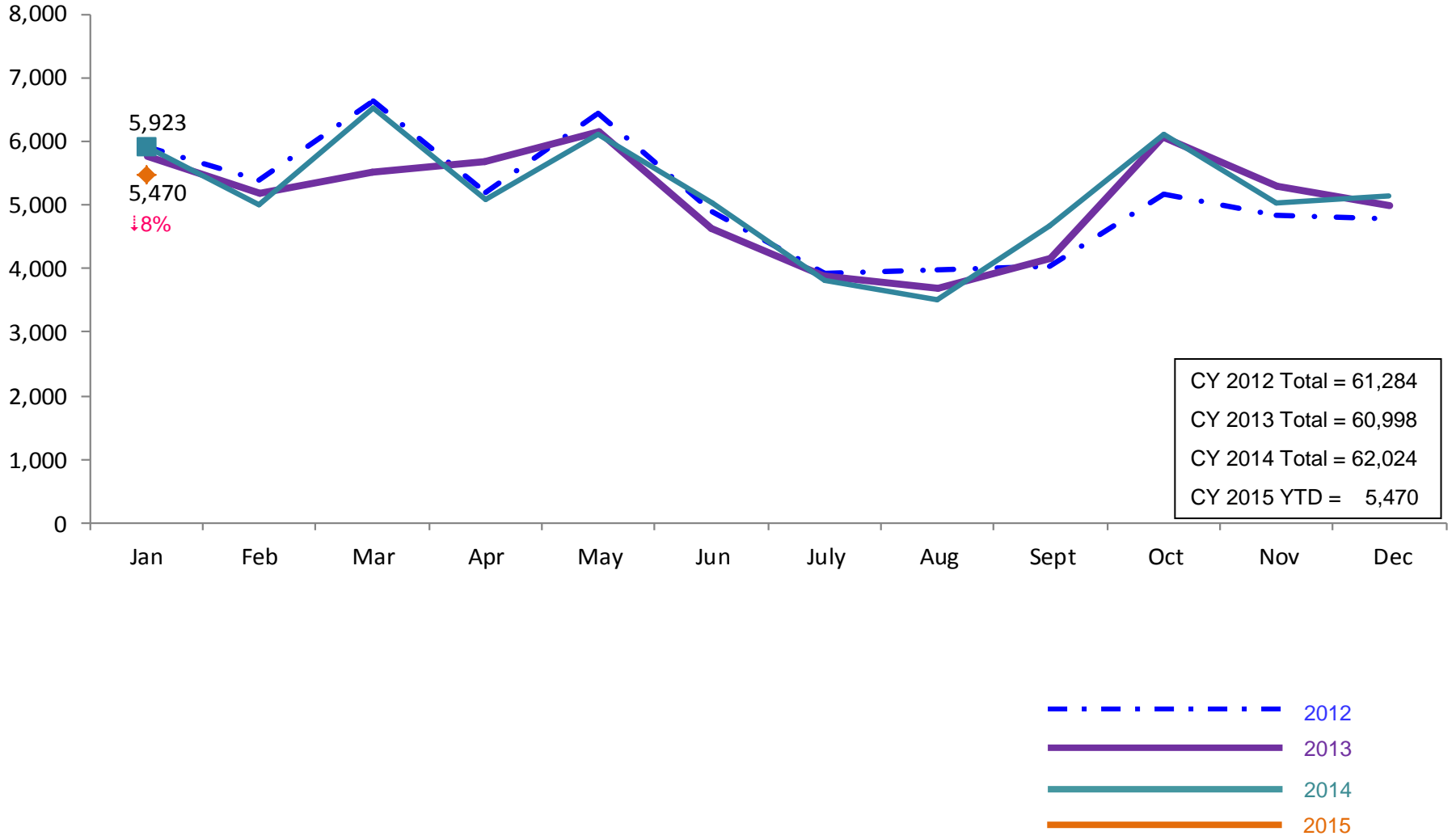
January 2012 – January 2015 (End of Month)



Notes: 1) Beginning October 1, 2012 ACS converted its early care and education system to a new model, EarlyLearn NYC. Enrollment data for the transitional months of October – December 2012 are not available because contractors were in the midst of implementing the data collection systems. 2) Percentage change is January 2014 vs. January 2015.

SCR Intakes

January 2012 – January 2015 (Monthly Total)

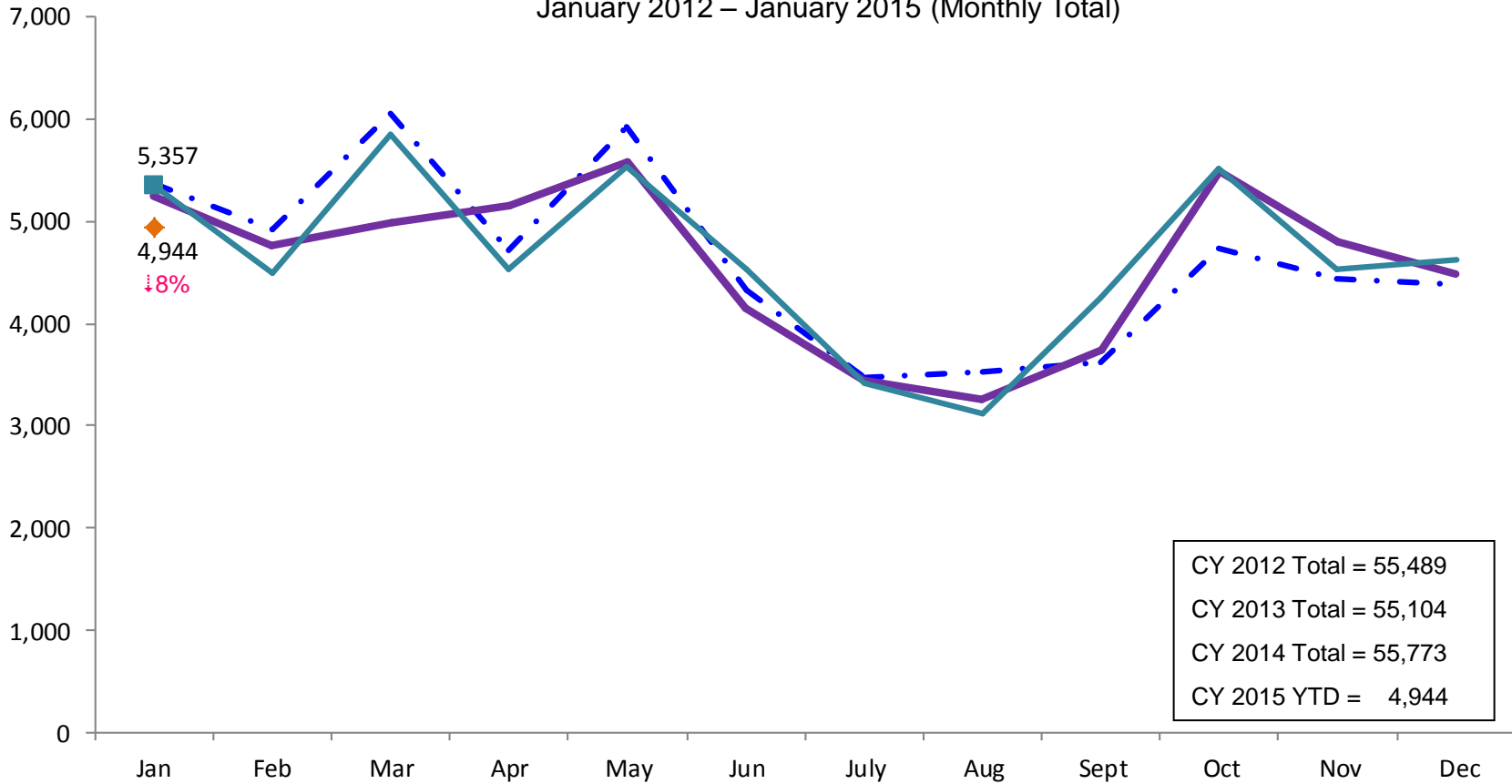


Note: Percentage change is January 2014 vs. January 2015.

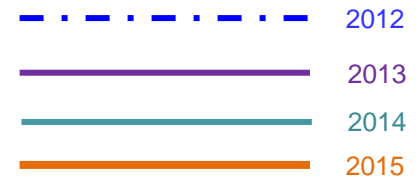
See Pages 30 through 35 of the Appendix for supporting data.

SCR Consolidated Investigations

January 2012 – January 2015 (Monthly Total)



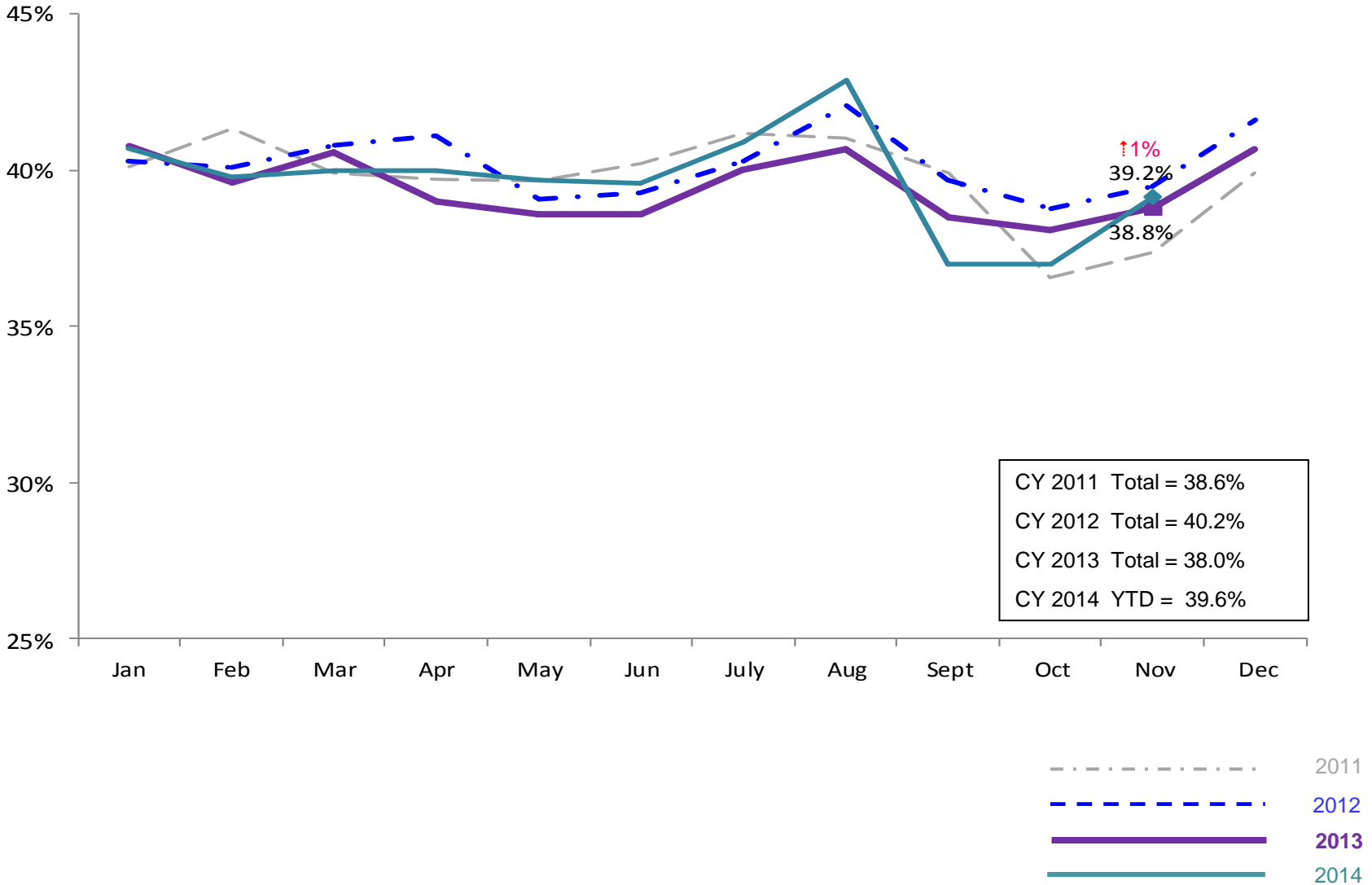
CY 2012 Total = 55,489
 CY 2013 Total = 55,104
 CY 2014 Total = 55,773
 CY 2015 YTD = 4,944



Note: Percentage change is January 2014 vs. January 2015.

SCR Investigation Indication Rate

January 2011 – November 2014

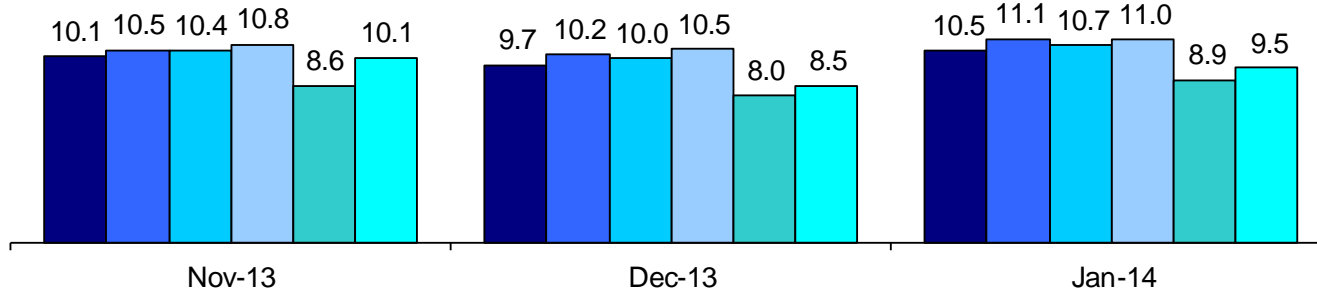


Note: Percentage change is November 2013 vs. November 2014.

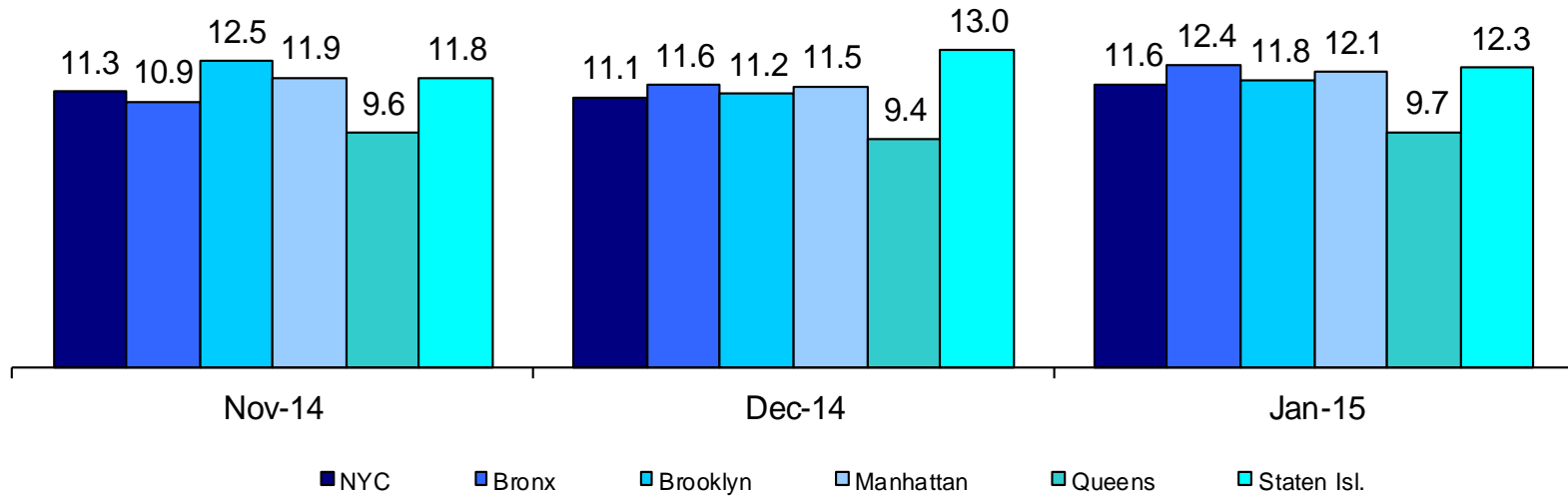
Average P/D Combined Caseload*

November 2013 – January 2014 & November 2014 – January 2015

2013



2014

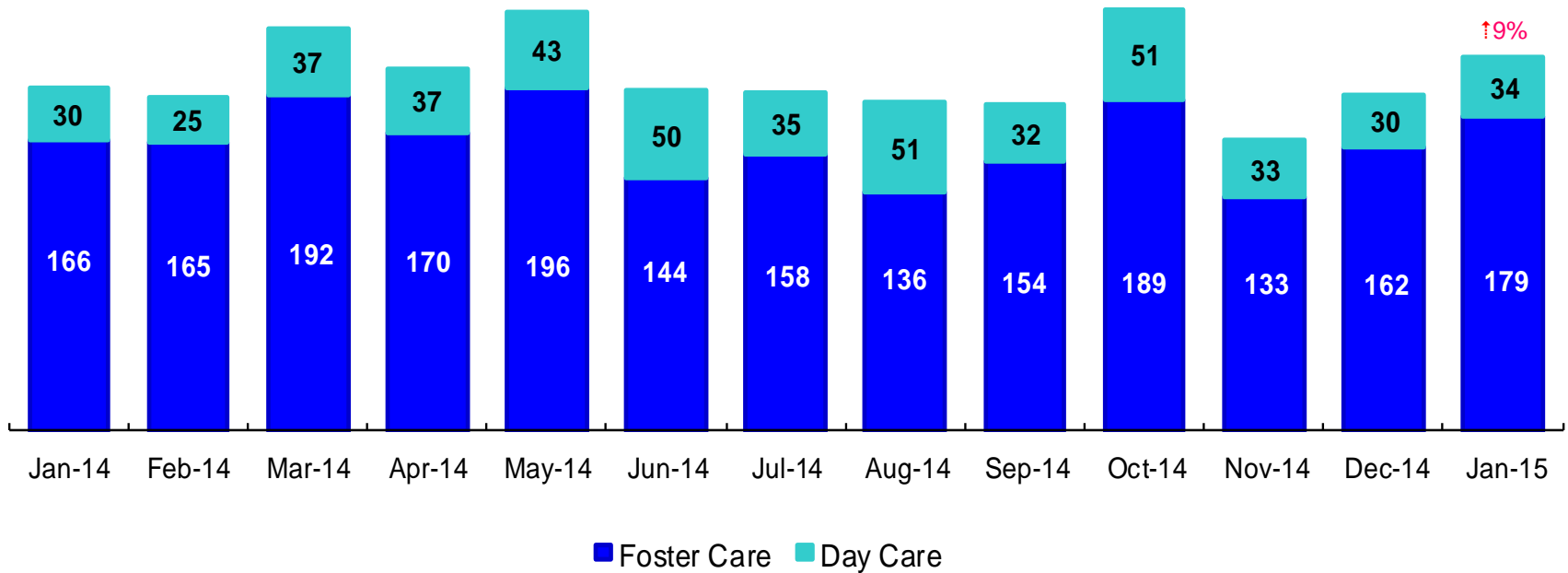


■ NYC ■ Bronx ■ Brooklyn ■ Manhattan ■ Queens ■ Staten Isl.

* Caseloads are of protective/diagnostic caseworkers only and exclude the caseloads carried by Level I and Level II Supervisors. 6

OSI Investigations by Program

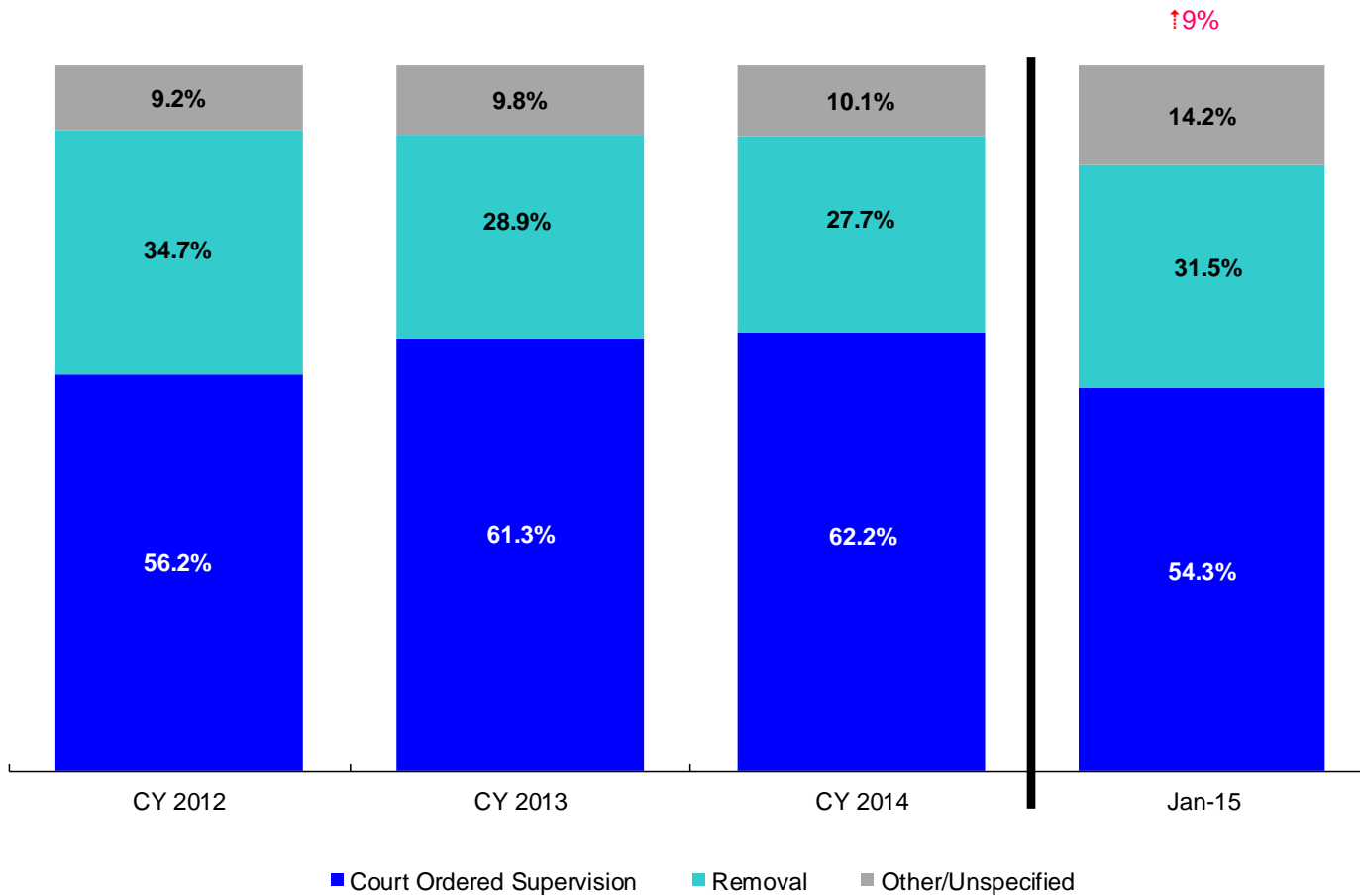
January 2014 – January 2015



| | Jan 2014 | Feb 2014 | Mar 2014 | Apr 2014 | May 2014 | Jun 2014 | July 2014 | Aug 2014 | Sep 2014 | Oct 2014 | Nov 2014 | Dec 2014 | Jan 2015 |
|--------------------------|----------|----------|----------|----------|----------|----------|-----------|----------|----------|----------|----------|----------|----------|
| Number of Investigations | 196 | 190 | 229 | 207 | 239 | 194 | 193 | 187 | 186 | 240 | 166 | 192 | 213 |

Note: Percentage change is January 2014 vs. January 2015.

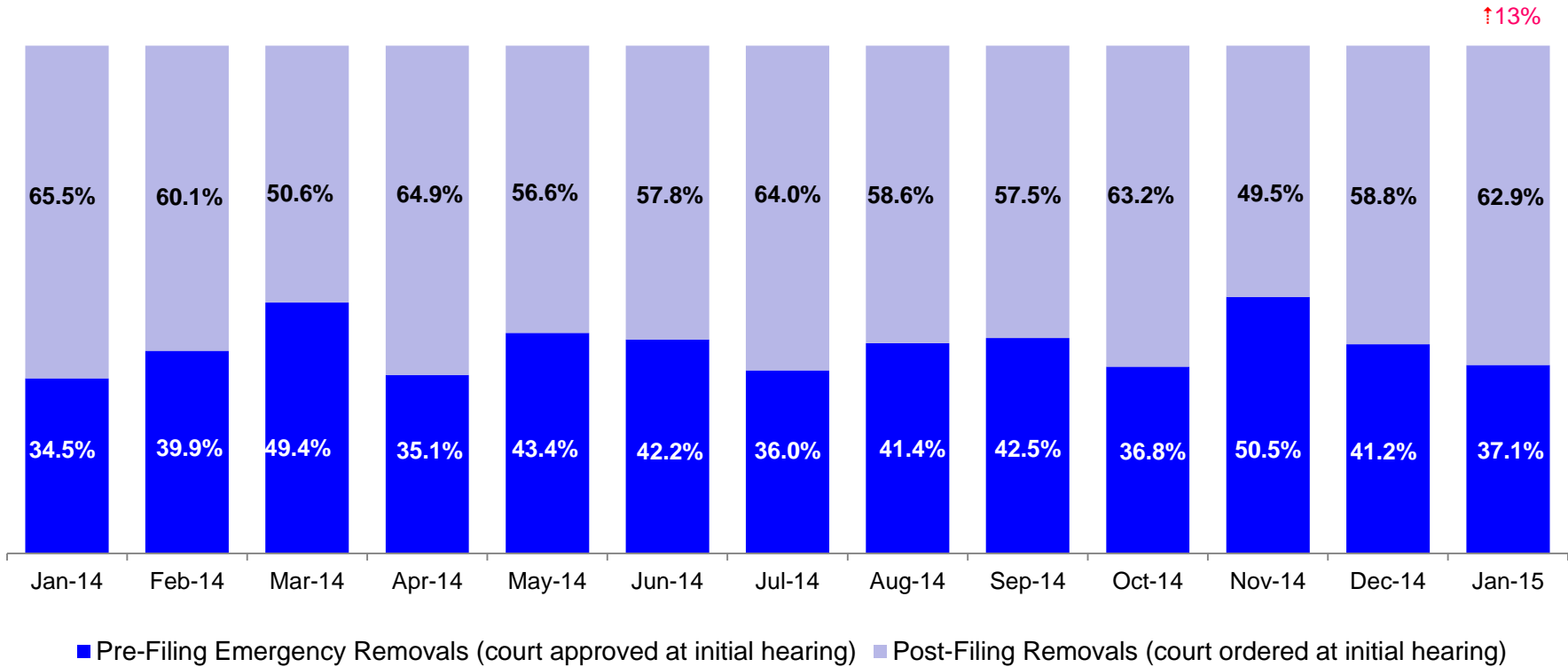
Article 10 Total Filings & Filing Outcomes, CY 2012 - CY 2014 and January 2015



| | CY 2012 | CY 2013 | CY 2014 | Jan 2015 |
|----------------|---------|---------|---------|----------|
| Art.10 Filings | 8,913 | 9,318 | 9,900 | 812 |

Notes: 1) The category “Other/Unspecified” includes released with no supervision, no order issued and no outcome specified. Outcomes of cases heard the next day are not captured in this report. 2) Percentage change is January 2014 vs. January 2015.

Article 10 Filing Removals, January 2014 – January 2015



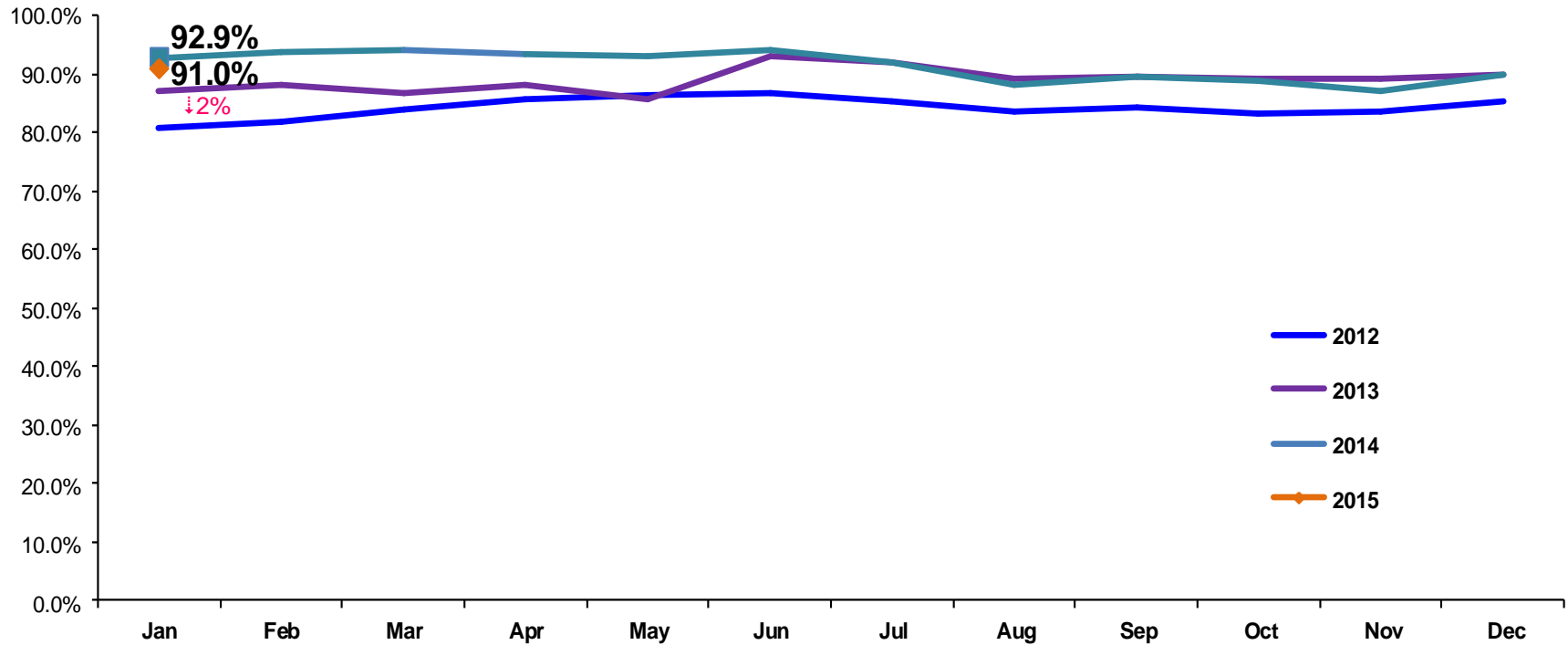
| | Jan 2014 | Feb 2014 | Mar 2014 | Apr 2014 | May 2014 | Jun 2014 | Jul 2014 | Aug 2014 | Sep 2014 | Oct 2014 | Nov 2014 | Dec 2014 | Jan 2015 |
|--------------------|----------|----------|----------|----------|----------|----------|----------|----------|----------|----------|----------|----------|----------|
| Number of Removals | 226 | 243 | 255 | 239 | 267 | 249 | 172 | 227 | 179 | 231 | 194 | 262 | 256 |

Note: Percentage change is January 2014 vs. January 2015.

PPRS Utilization Rate

January 2012 – January 2015 (End of Month)

General Preventive



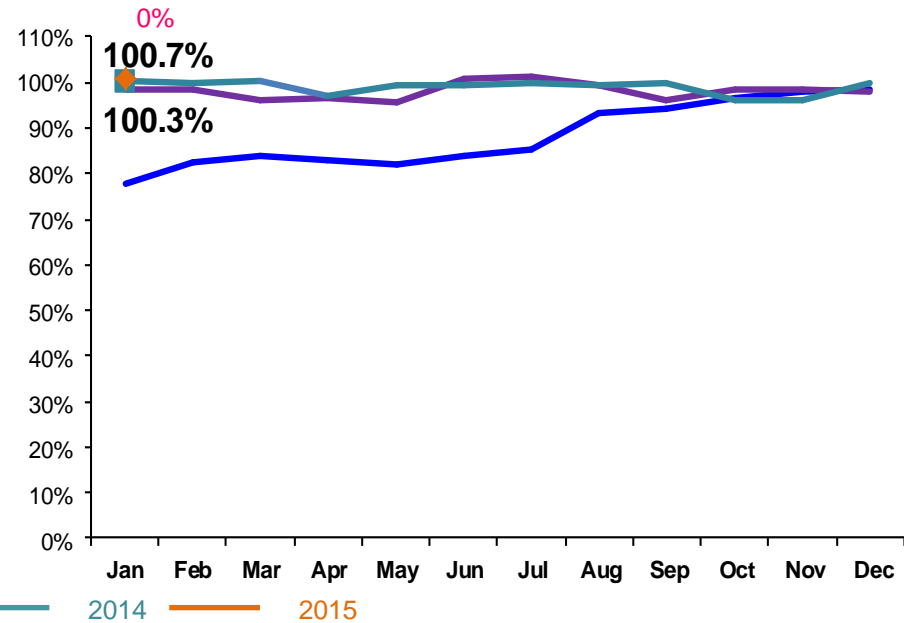
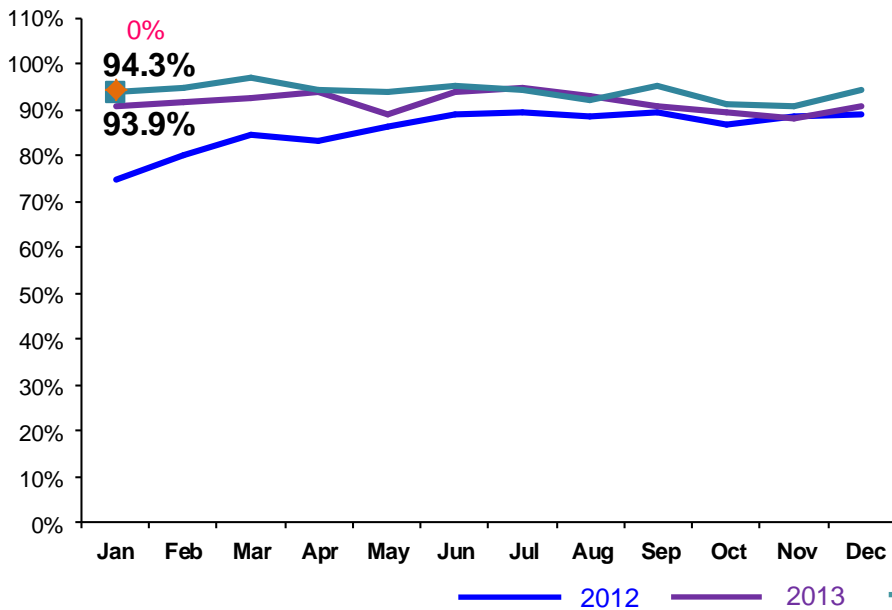
Notes: 1) Beacons programs are included in the GP utilization rates. 2) During June-October 2013 GP programs in the process of converting to EBMs were excluded from the GP utilization statistics. 3) Percentage change is January 2014 vs. January 2015.

PPRS Utilization Rate

January 2012 – January 2015 (End of Month)

Family Rehabilitation Program/Family Treatment Rehabilitation

Medically Fragile

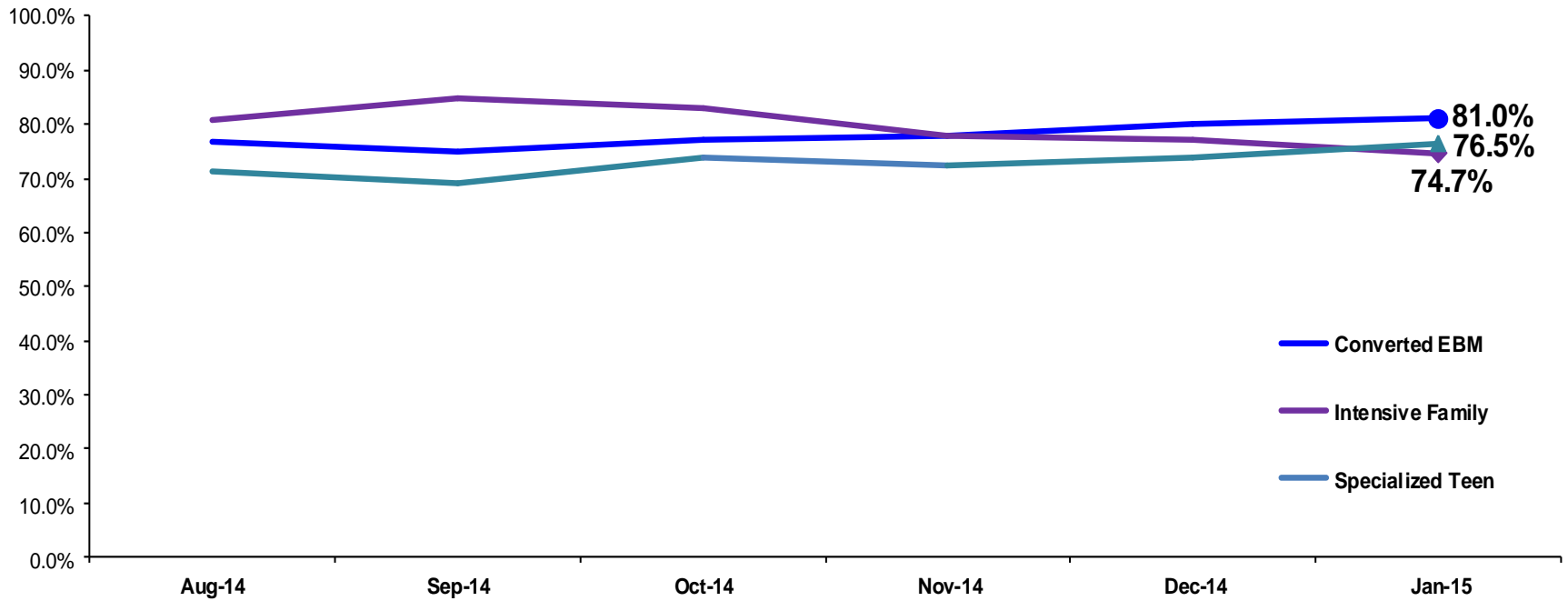


Notes: 1) During June -October 2013 FTR programs in the process of converting to EBMs were excluded from the FTR utilization statistics. 2) Percentage change is January 2014 vs. January 2015.

PPRS Utilization Rate

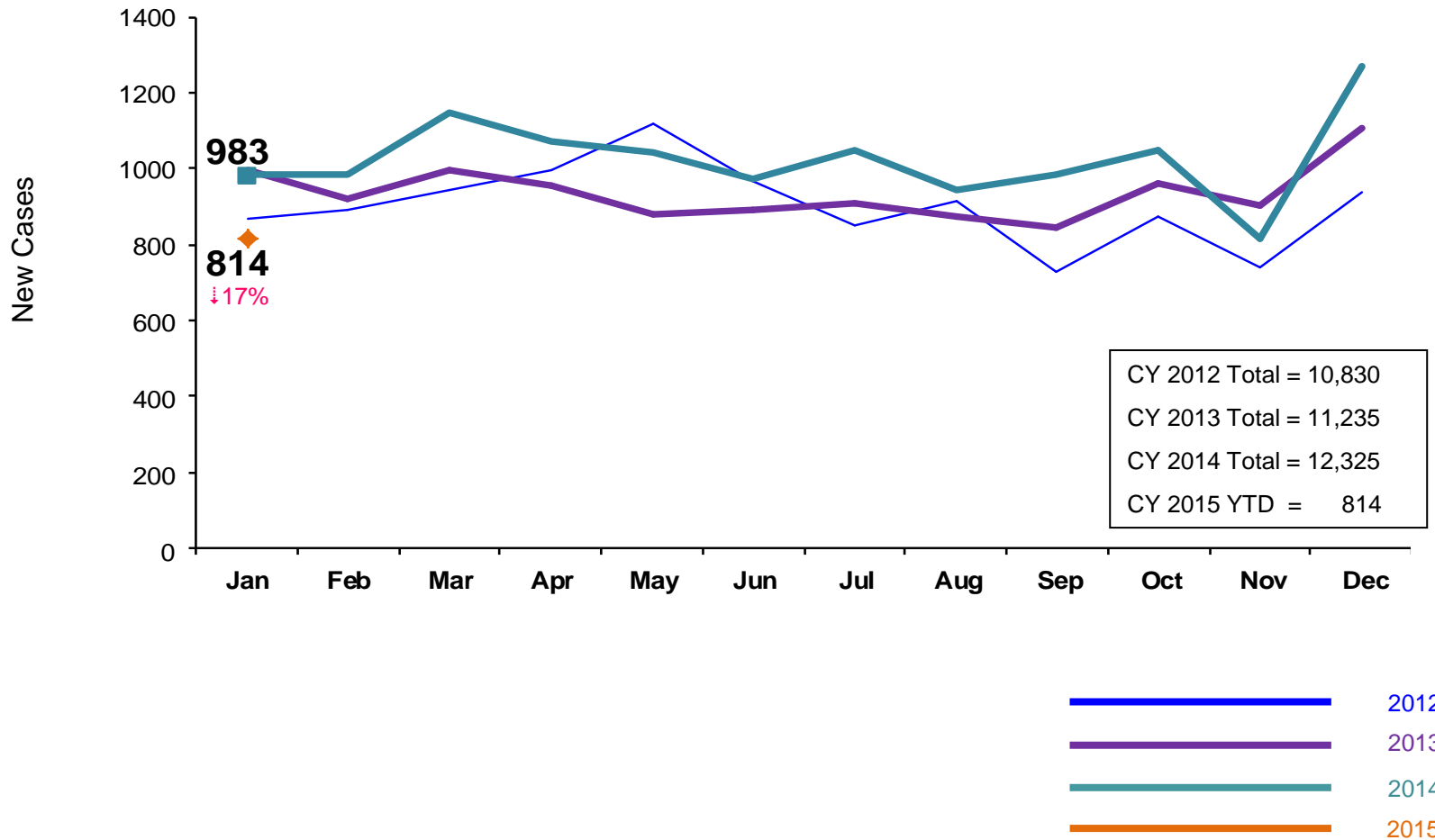
August 2014 – January 2015 (End of Month)

Converted EBM, Intensive Family and Specialized Teen



New Preventive Cases*

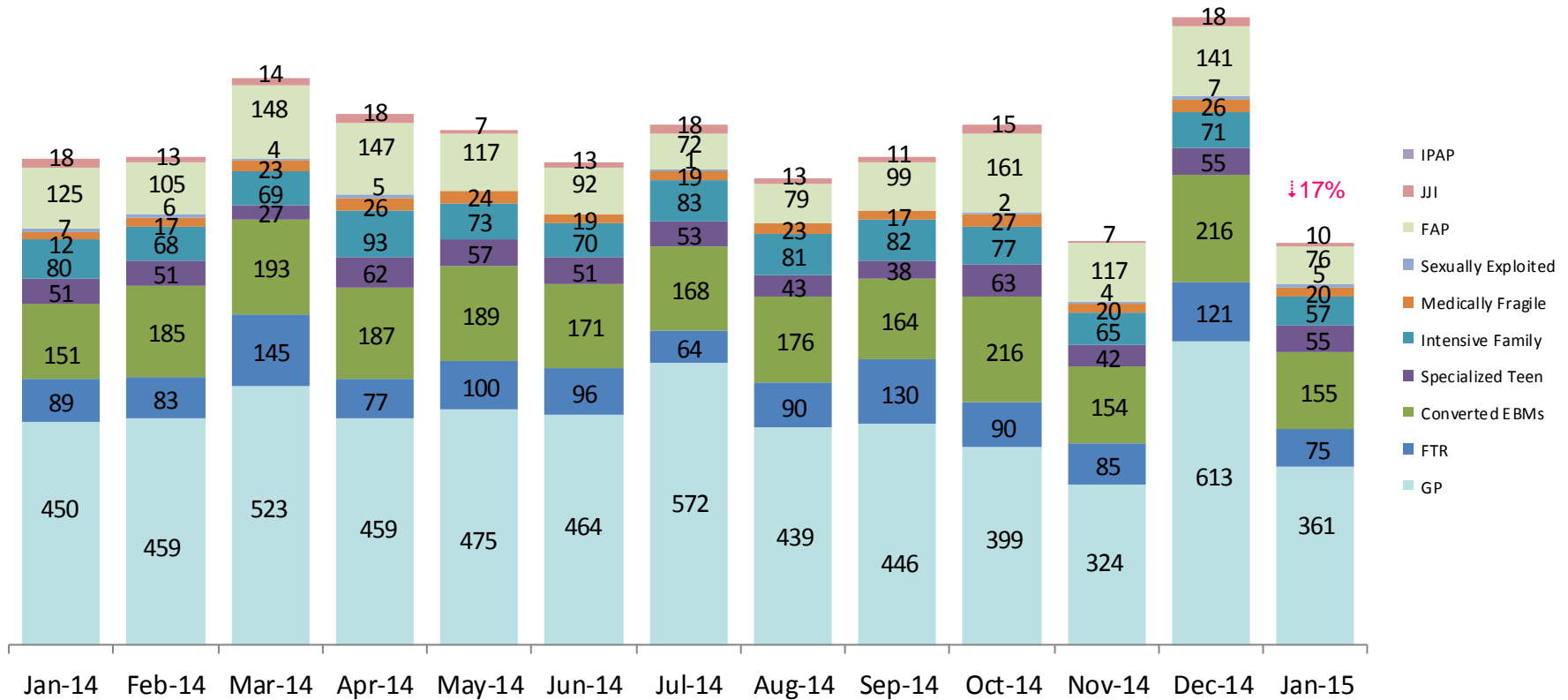
January 2012 – January 2015



*Notes: 1) New preventive cases do not include cases transferred from one preventive program to another. 2) Percentage change is January 2014 vs. January 2014. 3) See Pages 36 and 37 of the Appendix for supporting data.

New Preventive Cases* by Program Type

January 2014 – January 2015

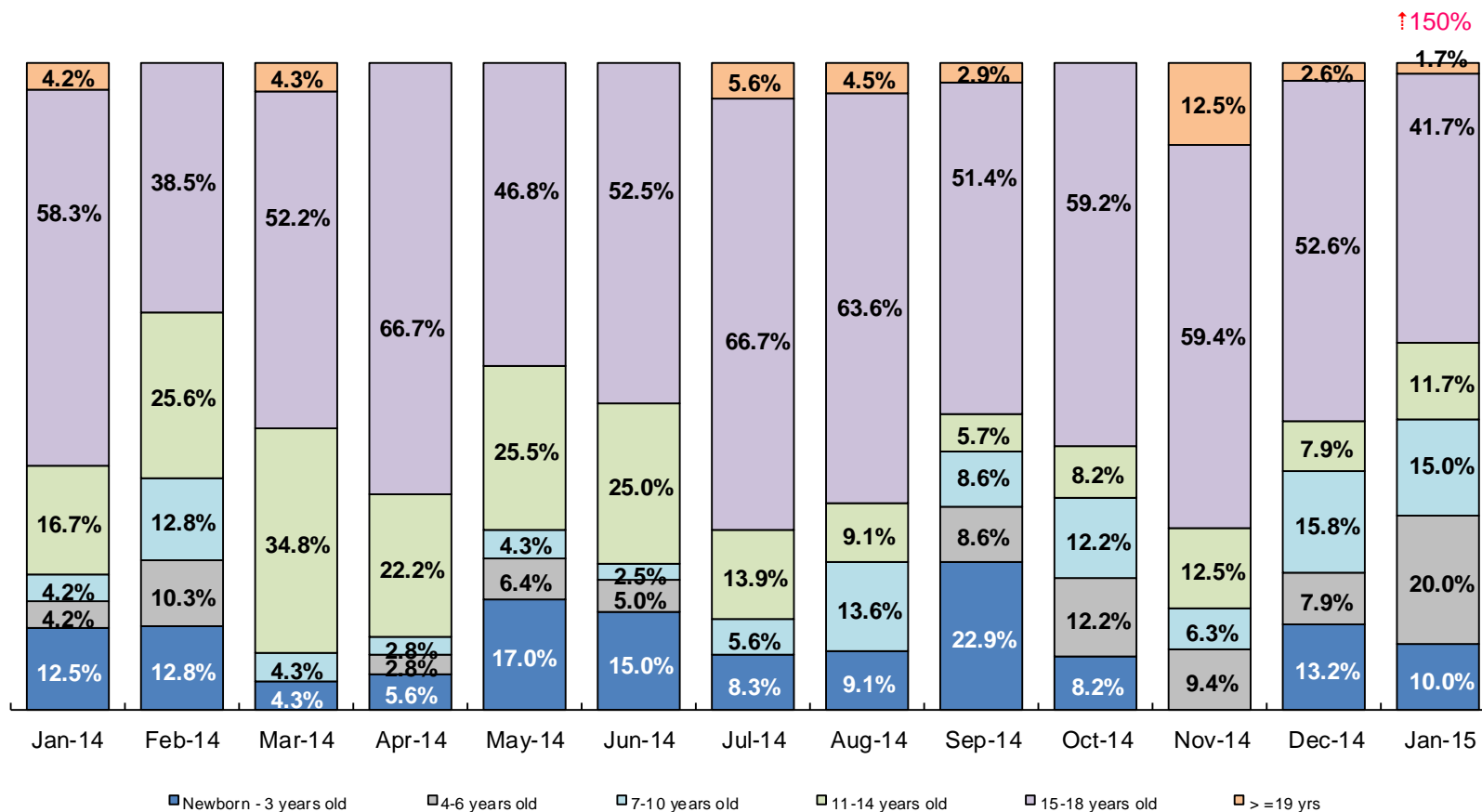


| | Jan 2014 | Feb 2014 | Mar 2014 | Apr 2014 | May 2014 | Jun 2014 | Jul 2014 | Aug 2014 | Sep 2014 | Oct 2014 | Nov 2014 | Dec 2014 | Jan 2015 |
|--------------------------------|----------|----------|----------|----------|----------|----------|----------|----------|----------|----------|----------|----------|----------|
| Number of New Preventive Cases | 983 | 987 | 1,146 | 1,074 | 1,042 | 976 | 1,050 | 944 | 987 | 1,050 | 818 | 1,268 | 814 |

Notes: 1) New preventive cases do not include cases transferred from one preventive program to another. 2) Percentage change is January 2014 vs. January 2015.

Children's Center Population by Age

January 2014 – January 2015

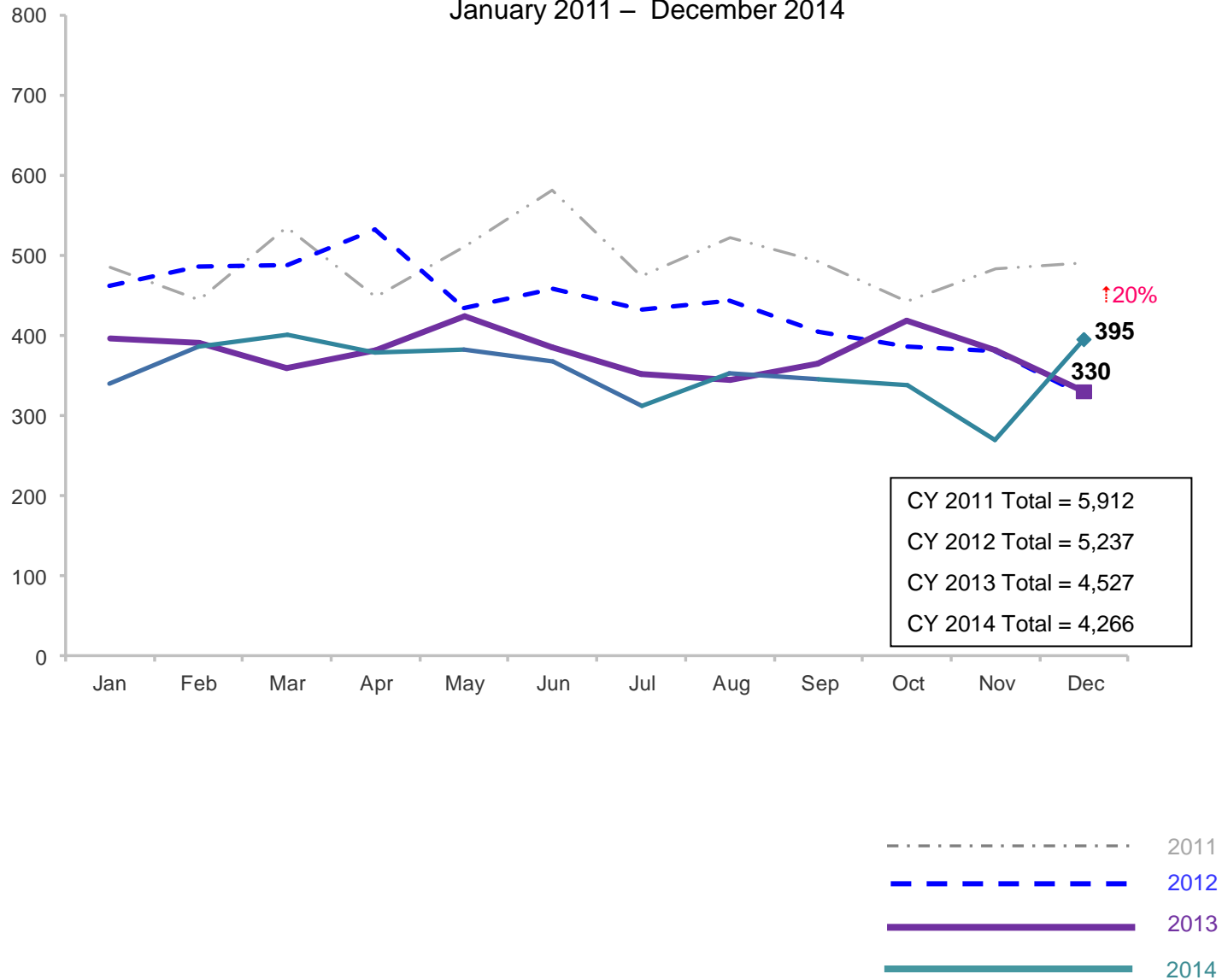


| | Jan 2014 | Feb 2014 | Mar 2014 | Apr 2014 | May 2014 | Jun 2014 | Jul 2014 | Aug 2014 | Sep 2014 | Oct 2014 | Nov 2014 | Dec 2014 | Jan 2015 |
|--------------------|----------|----------|----------|----------|----------|----------|----------|----------|----------|----------|----------|----------|----------|
| Number of Children | 24 | 39 | 23 | 36 | 47 | 40 | 36 | 22 | 35 | 49 | 32 | 38 | 60 |

Note: Percentage change is January 2014 vs. January 2015.

Total Monthly Placements

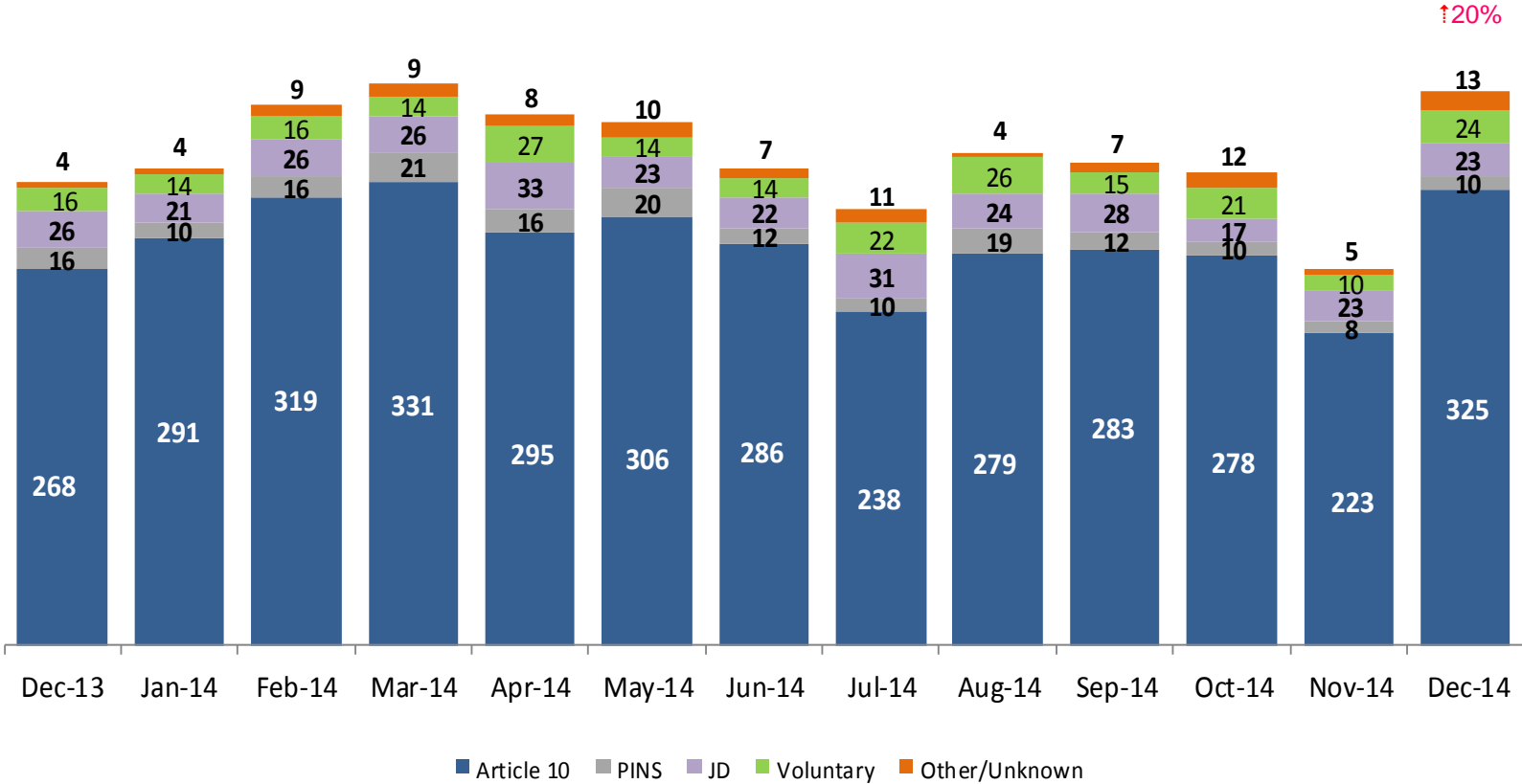
January 2011 – December 2014



Note: Percentage change is December 2013 vs. December 2014.

Reason for Initial Placements into Foster Care

December 2013 – December 2014

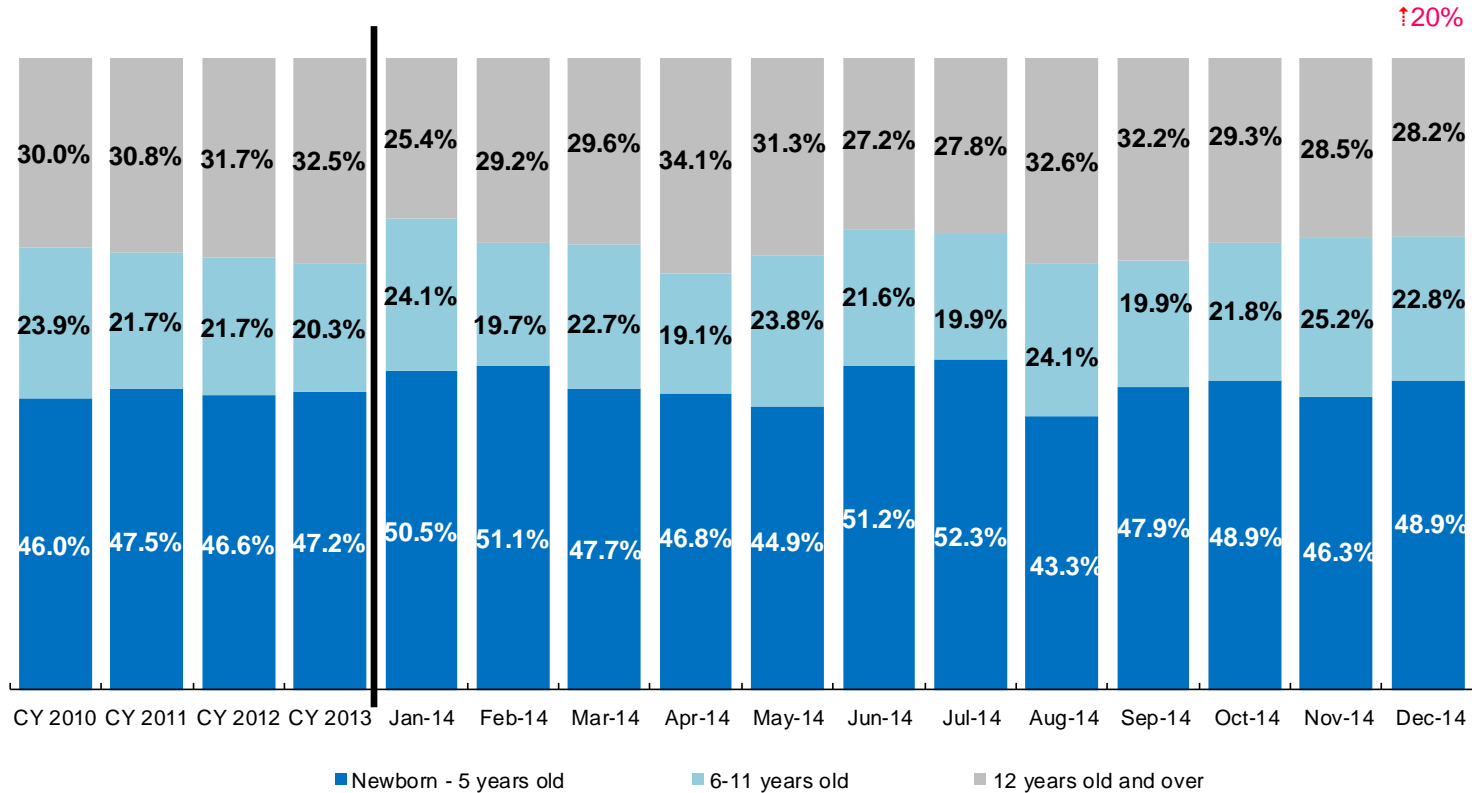


| | Dec 2013 | Jan 2014 | Feb 2014 | Mar 2014 | April 2014 | May 2014 | Jun 2014 | Jul 2014 | Aug 2014 | Sep 2014 | Oct 2014 | Nov 2014 | Dec 2014 |
|----------------------|----------|----------|----------|----------|------------|----------|----------|----------|----------|----------|----------|----------|----------|
| Number of Placements | 330 | 340 | 386 | 401 | 379 | 382 | 367 | 312 | 352 | 345 | 338 | 269 | 395 |

Note: Percentage change is December 2013 vs. December 2014.

Placements* by Age

CY 2010 – CY 2013 and January – December 2014



| | CY 2010 | CY 2011 | CY 2012 | CY 2013 | Jan 2014 | Feb 2014 | Mar 2014 | Apr 2014 | May 2014 | Jun 2014 | Jul 2014 | Aug 2014 | Sep 2014 | Oct 2014 | Nov 2014 | Dec 2014 |
|------------|---------|---------|---------|---------|----------|----------|----------|----------|----------|----------|----------|----------|----------|----------|----------|----------|
| Placements | 5,842 | 4,941 | 4,823 | 4,170 | 319 | 360 | 375 | 346 | 361 | 342 | 281 | 328 | 317 | 321 | 246 | 372 |

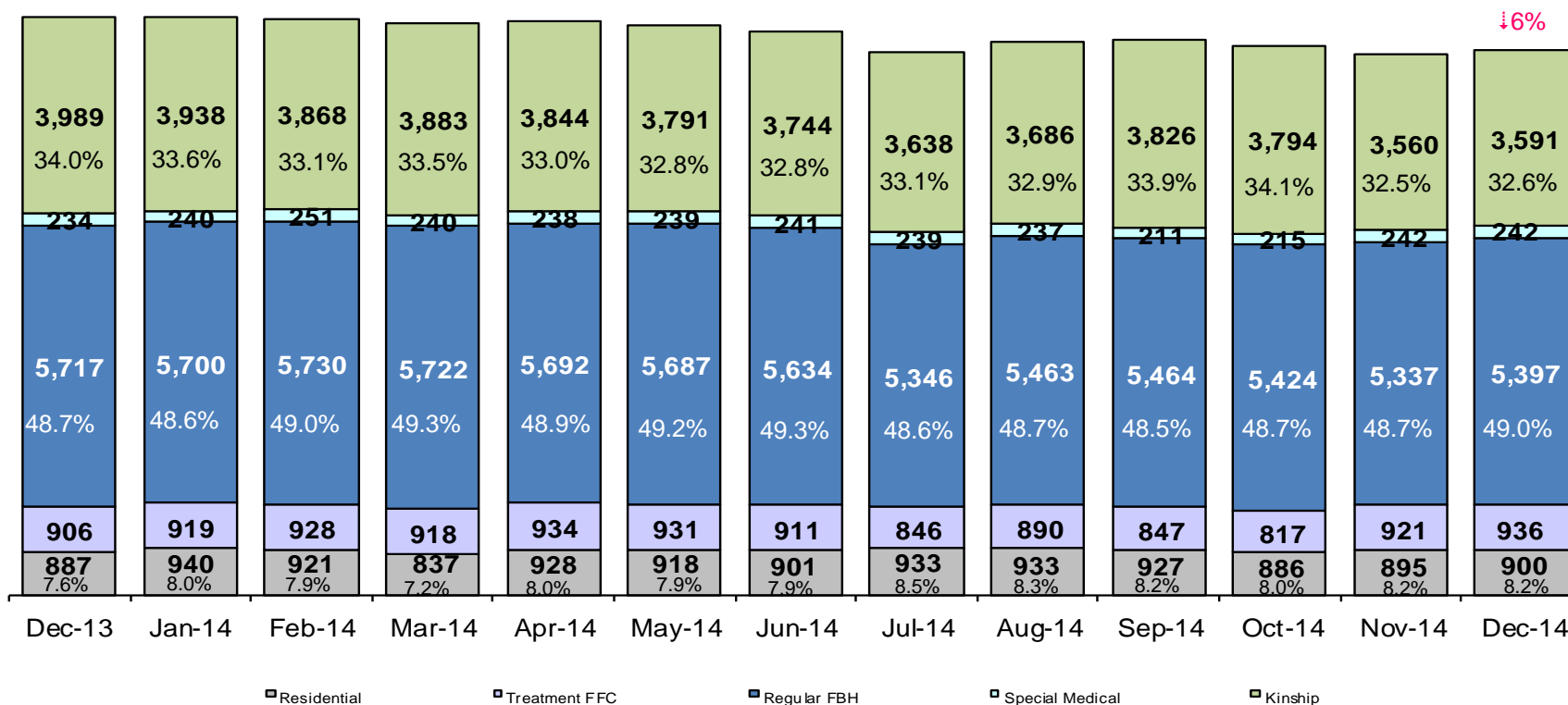
↑20%

*Excludes JD placements.

Note: Percentage change is December 2013 vs. December 2014.

Children in Foster Care*

December 2013 – December 2014 (end of month)

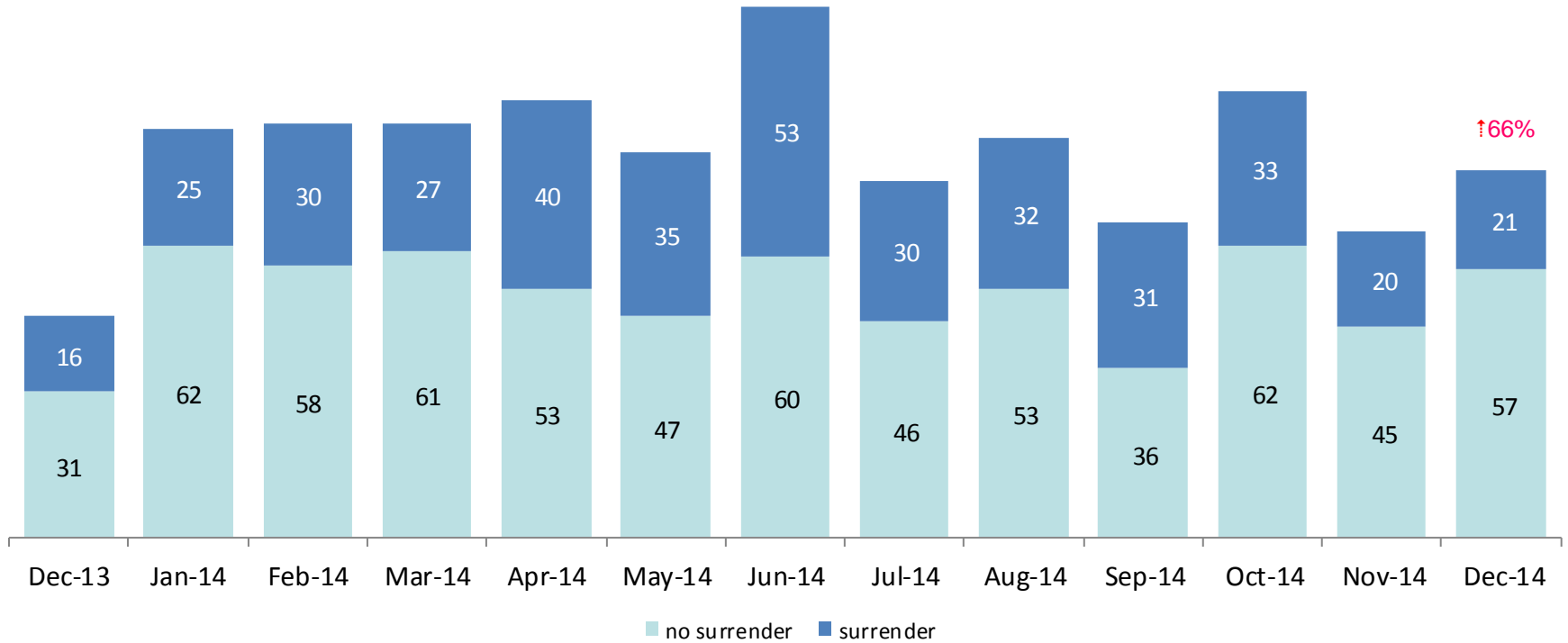


| | Dec 2013 | Jan 2014 | Feb 2014 | Mar 2014 | Apr 2014 | May 2014 | Jun 2014 | Jul 2014 | Aug 2014 | Sep 2014 | Oct 2014 | Nov 2014 | Dec 2014 |
|-----------------------|----------|----------|----------|----------|----------|----------|----------|----------|----------|----------|----------|----------|----------|
| Number in Foster Care | 11,733 | 11,737 | 11,698 | 11,600 | 11,636 | 11,566 | 11,431 | 11,002 | 11,209 | 11,275 | 11,136 | 10,955 | 11,067 |

*Excludes JD placements and includes approximately 400 young children who are living in foster homes or residential care facilities with their mothers who are in foster care (8D children).

Notes: 1) Percentage change is December 2013 vs. December 2014. 2) The treatment FFC census counts have been revised for December 2013 –November 2014 to capture all children in treatment FFC placements.

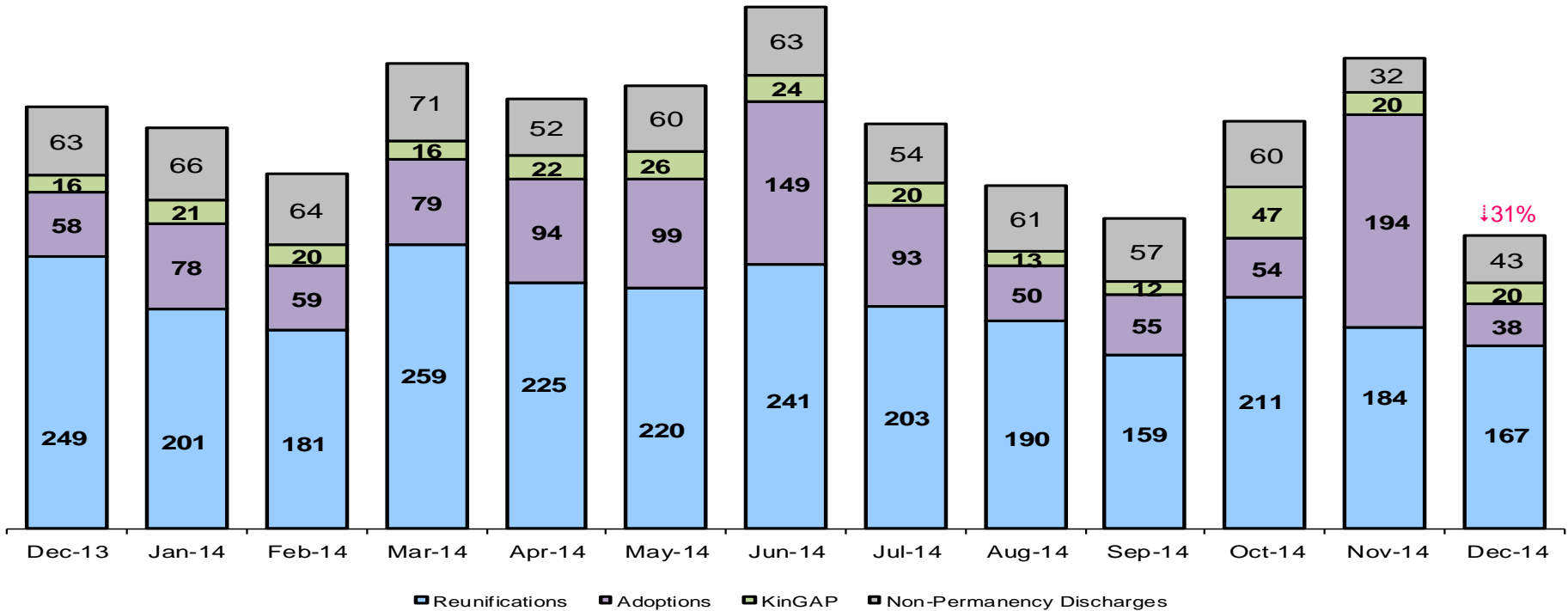
Children Freed for Adoption, Surrender by at Least One Parent December 2013 – December 2014



| | Dec 2013 | Jan 2014 | Feb 2014 | Mar 2014 | Apr 2014 | May 2014 | Jun 2014 | Jul 2014 | Aug 2014 | Sep 2014 | Oct 2014 | Nov 2014 | Dec 2014 |
|---------------------------|----------|----------|----------|----------|----------|----------|----------|----------|----------|----------|----------|----------|----------|
| Number Freed for Adoption | 47 | 87 | 88 | 88 | 93 | 82 | 113 | 76 | 85 | 67 | 95 | 65 | 78 |

Note: Percentage change is for the number of children freed for adoption during December 2013 vs. December 2014.

Permanency and Non-Permanency* Discharges from Foster Care** December 2013 – December 2014



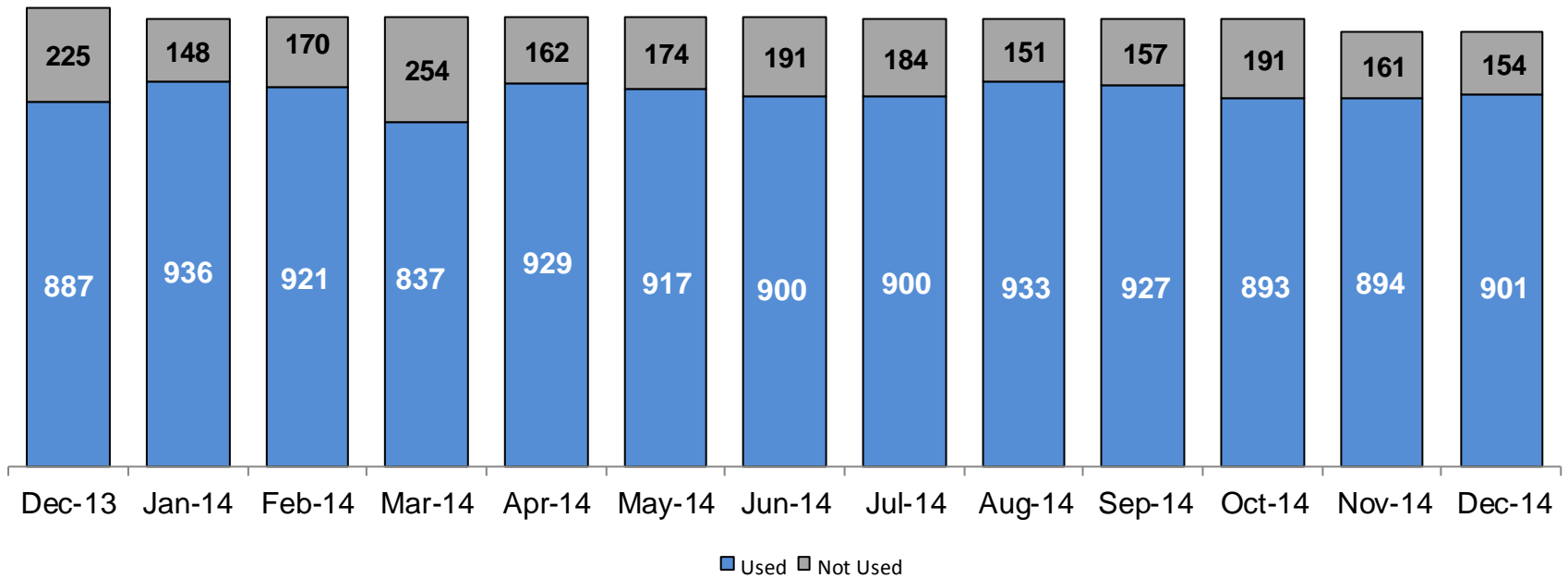
| | Dec 2013 | Jan 2014 | Feb 2014 | Mar 2014 | Apr 2014 | May 2014 | Jun 2014 | Jul 2014 | Aug 2014 | Sep 2014 | Oct 2014 | Nov 2014 | Dec 2014 |
|----------------------|----------|----------|----------|----------|----------|----------|----------|----------|----------|----------|----------|----------|----------|
| Number of Discharges | 386 | 366 | 324 | 425 | 393 | 405 | 477 | 370 | 314 | 283 | 372 | 430 | 268 |

*Non-permanency discharges include AWOL, APPLA , other discharge destinations such as mental institutions and correctional facilities and discharges with unspecified destinations.

**Excludes discharges of youth who were in JD status at any time during their foster care spell.

Note: Percentage change is December 2013 vs. December 2014.

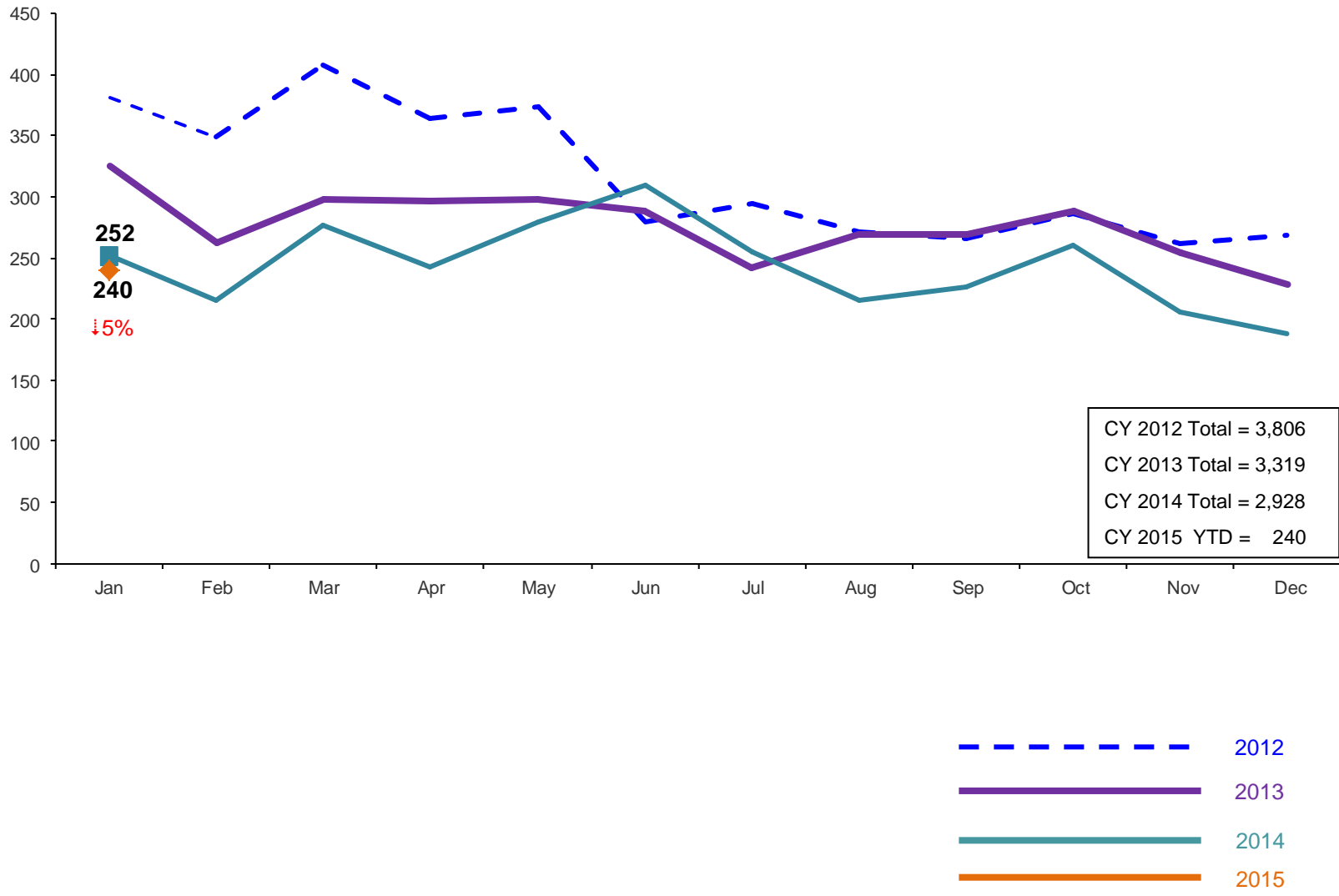
Residential Care Capacity and Utilization, December 2013 – December 2014



| | Dec 2013 | Jan 2014 | Feb 2014 | Mar 2014 | Apr 2014 | May 2014 | Jun 2014 | Jul 2014 | Aug 2014 | Sep 2014 | Oct 2014 | Nov 2014 | Dec 2014 |
|----------|----------|----------|----------|----------|----------|----------|----------|----------|----------|----------|----------|----------|----------|
| Capacity | 1,112 | 1,084 | 1,091 | 1,091 | 1,091 | 1,091 | 1,091 | 1,084 | 1,084 | 1,084 | 1,084 | 1,084 | 1,055 |

Total Monthly Admissions to Detention

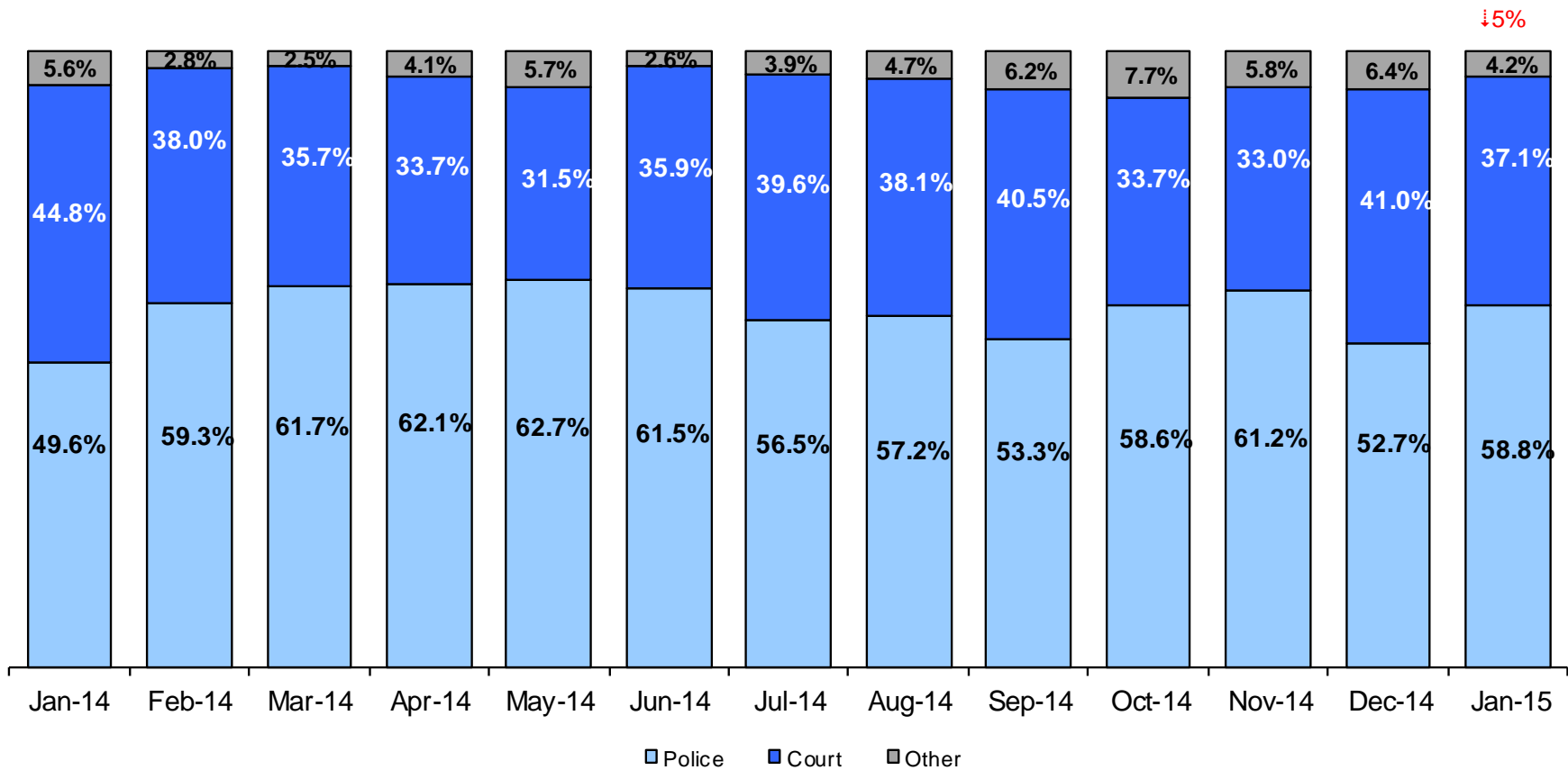
January 2012 – January 2015 (Monthly Total)



Note: Percentage change is January 2014 vs. January 2015.

Admit Authority on Admissions

January 2013 - January 2014 (Monthly Total)



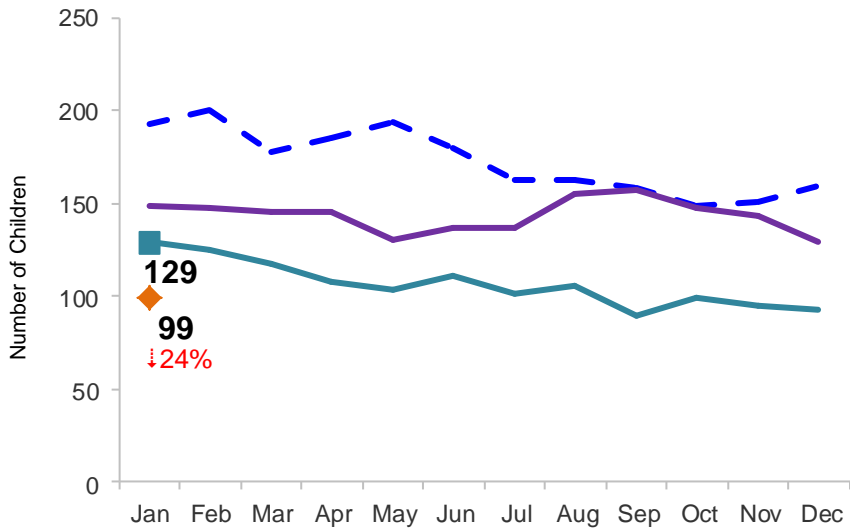
| | Jan 2014 | Feb 2014 | Mar 2014 | Apr 2014 | May 2014 | Jun 2014 | Jul 2014 | Aug 2014 | Sep 2014 | Oct 2014 | Nov 2014 | Dec 2014 | Jan 2015 |
|----------------------|----------|----------|----------|----------|----------|----------|----------|----------|----------|----------|----------|----------|----------|
| Number of Admissions | 252 | 216 | 277 | 243 | 279 | 309 | 255 | 215 | 227 | 261 | 206 | 188 | 240 |

Notes: 1) Other Admit Authority includes the Sheriff Department, Department of Corrections and ACS. 2) Percentage change is January 2014 vs. January 2015.

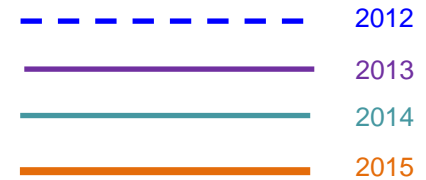
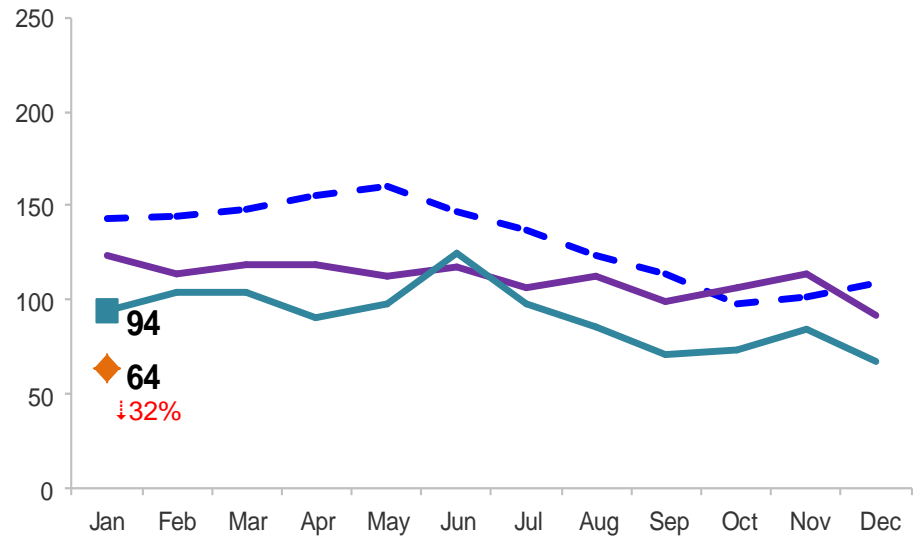
Monthly Average Daily Population

January 2012 – January 2015

Secure Detention



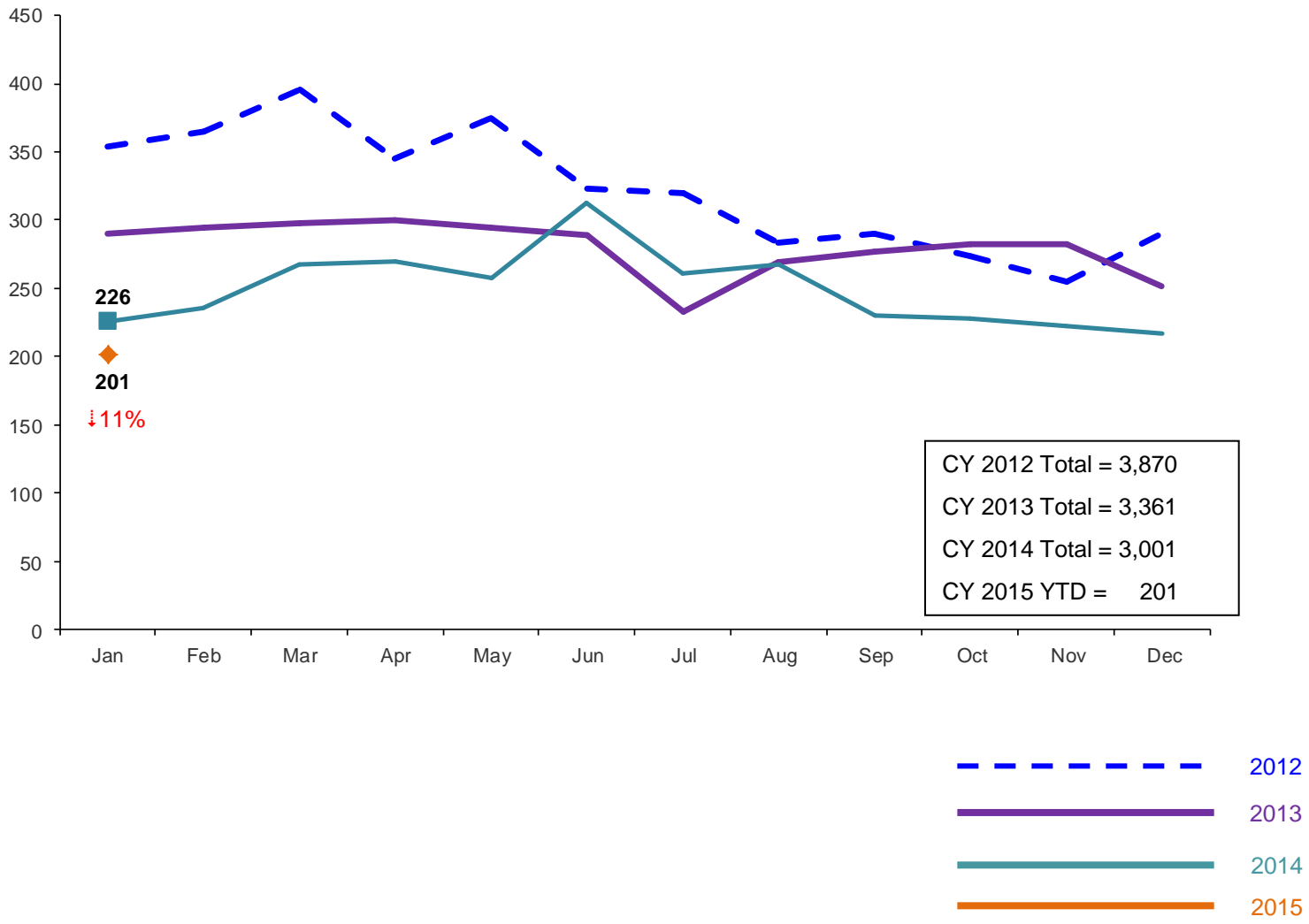
Non-Secure Detention



Note: Percentage change is January 2014 vs. January 2015.

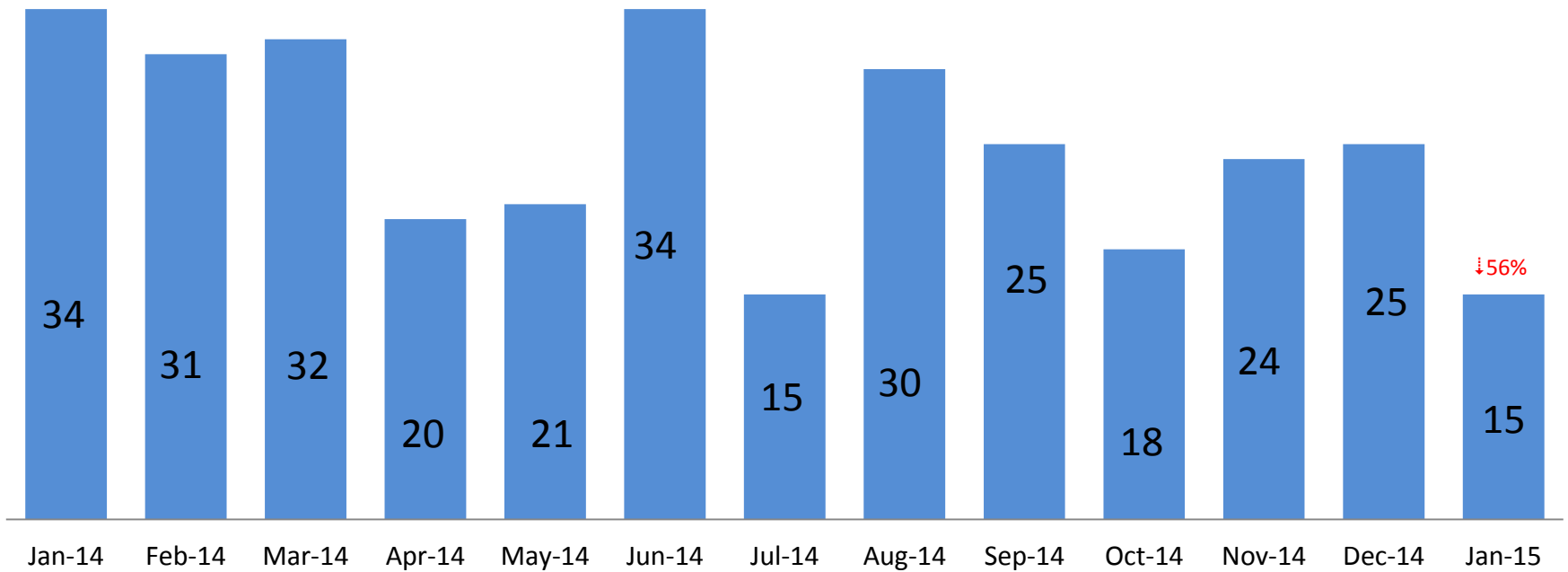
Total Monthly Releases from Detention

January 2012 – January 2015 (Monthly Total)



Note: Percentage change is January 2014 vs. January 2015.

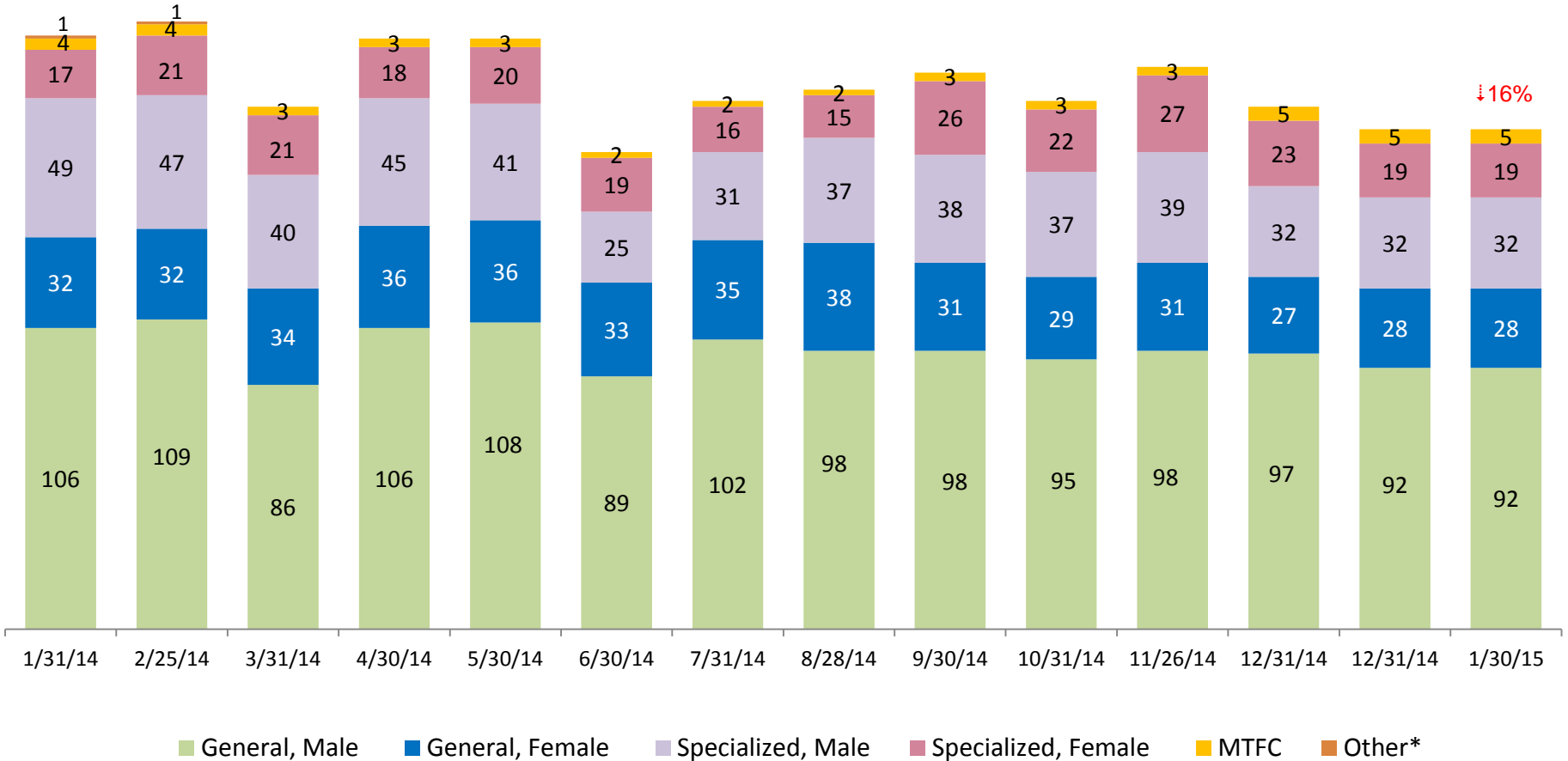
ACS NSP Intakes January 2014 – January 2015



Note: Percentage change is January 2014 vs. January 2015.

ACS Non-Secure Placement, in 24 hour Care

January 2014 – January 2015 (Point-in-Time)

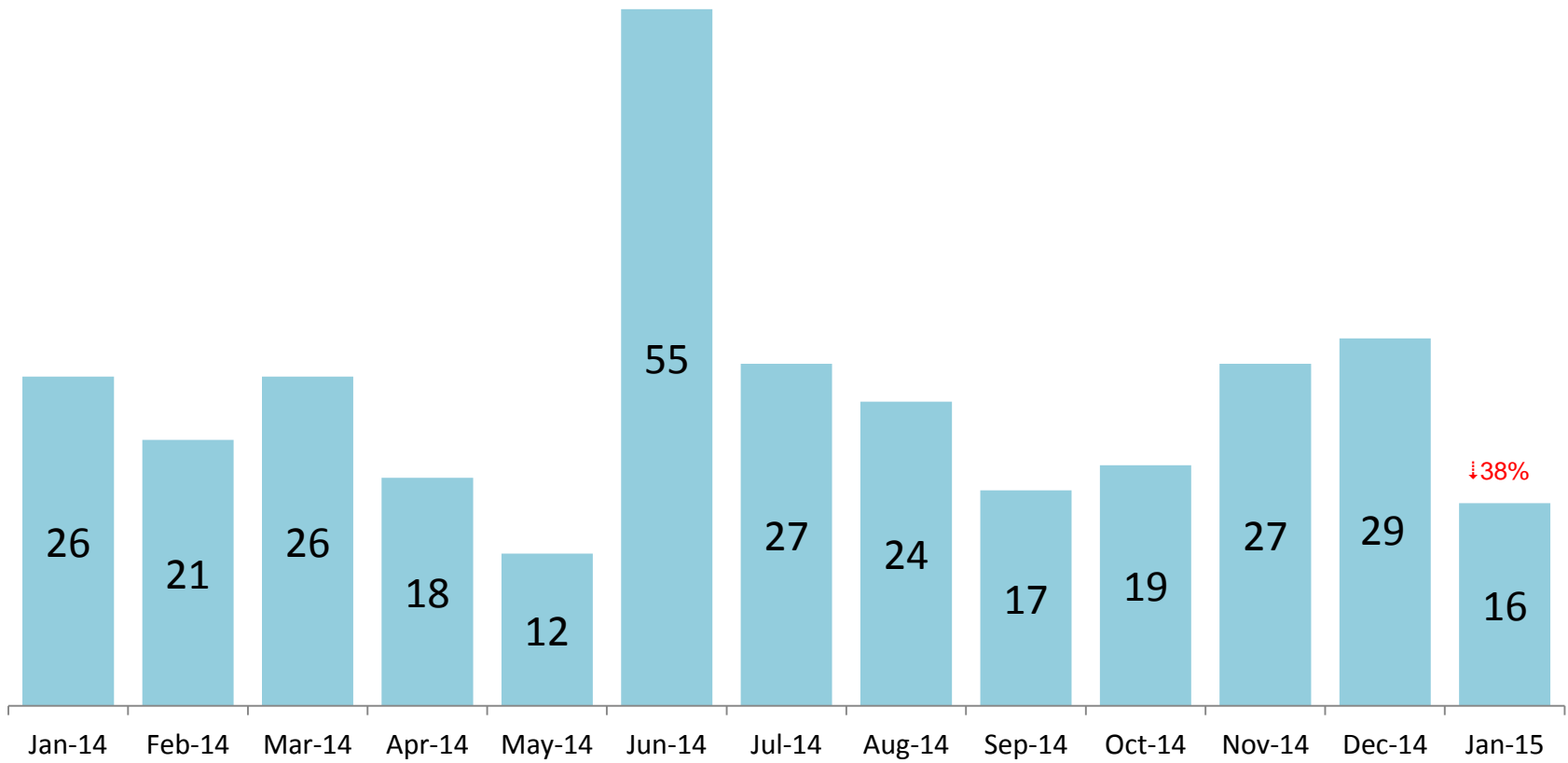


| | 1/31/14 | 2/25/14 | 3/31/14 | 4/30/14 | 5/30/14 | 6/30/14 | 7/31/14 | 8/28/14 | 9/30/14 | 10/31/14 | 11/26/14 | 12/31/14 | 1/30/15 |
|---------------------|---------|---------|---------|---------|---------|---------|---------|---------|---------|----------|----------|----------|---------|
| Number in Placement | 209 | 214 | 184 | 208 | 208 | 168 | 186 | 190 | 196 | 186 | 198 | 184 | 176 |

*Other includes NYC youth in voluntary placements with Lincoln Hall, MercyFirst and Graham Windham.

Note: Percentage change is January 2014 vs. January 2015.

Releases from NSP to Aftercare January 2014 – January 2015



Note: Percentage change is January 2014 vs. January 2015.

Appendix

Figure 1: SCR Intakes by Borough, NOV 13 – JAN 14 and NOV 14 – JAN 15

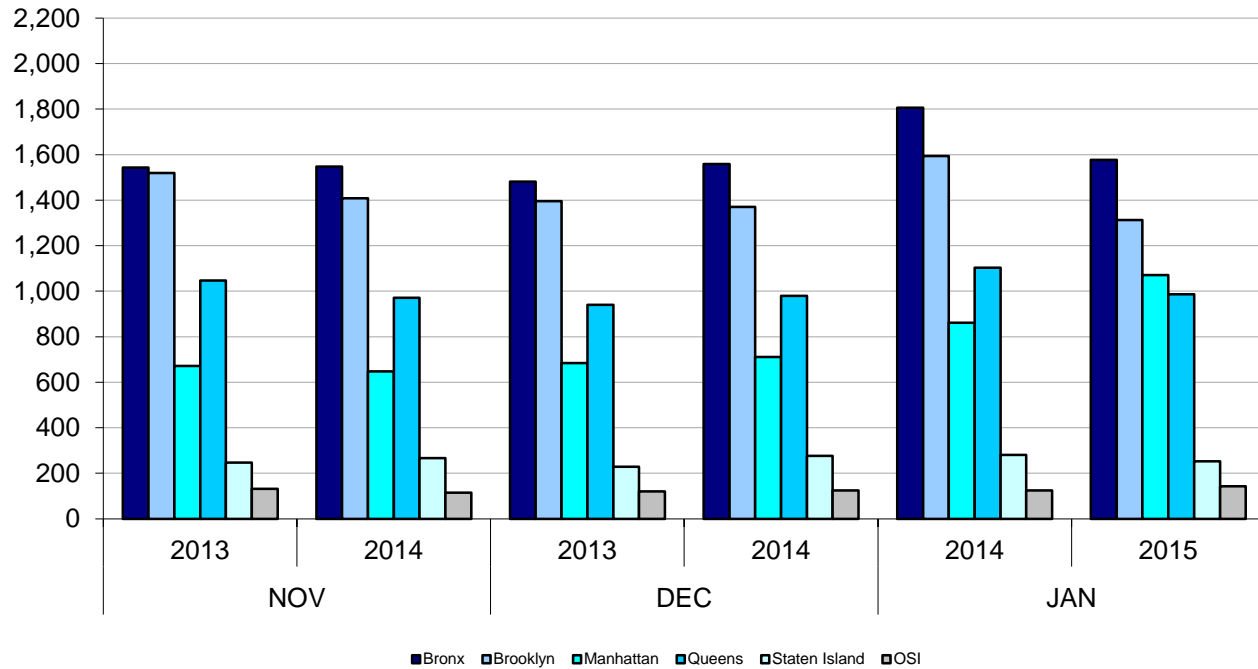


TABLE 1 - SCR Intake Changes by Borough, NOV 13 – JAN 14 and NOV 14 – JAN 15

| Month | Year | Bronx | Brooklyn | Manhattan | Queens | Staten Island | OSI | Other | Total |
|-------|-----------|--------|----------|-----------|--------|---------------|--------|--------|--------|
| NOV | 2013 | 1,543 | 1,520 | 672 | 1,047 | 247 | 131 | 132 | 5,292 |
| | 2014 | 1,548 | 1,409 | 647 | 971 | 266 | 114 | 90 | 5,045 |
| | % Change | 0.3% | -7.3% | -3.7% | -7.3% | 7.7% | -13.0% | -31.8% | -4.7% |
| DEC | 2013 | 1,481 | 1,395 | 684 | 940 | 229 | 121 | 135 | 4,985 |
| | 2014 | 1,559 | 1,370 | 711 | 980 | 277 | 125 | 126 | 5,148 |
| | % Change | 5.3% | -1.8% | 3.9% | 4.3% | 21.0% | 3.3% | -6.7% | 3.3% |
| JAN | 2014 | 1,806 | 1,594 | 861 | 1,103 | 281 | 124 | 154 | 5,923 |
| | 2015 | 1,577 | 1,313 | 1,071 | 986 | 253 | 143 | 127 | 5,470 |
| | % Change | -12.7% | -17.6% | 24.4% | -10.6% | -10.0% | 15.3% | -17.5% | -7.6% |
| Total | 2013/2014 | 4,830 | 4,509 | 2,217 | 3,090 | 757 | 376 | 421 | 16,200 |
| | 2014/2015 | 4,684 | 4,092 | 2,429 | 2,937 | 796 | 382 | 343 | 15,663 |
| | % Change | -3.0% | -9.2% | 9.6% | -5.0% | 5.2% | 1.6% | -18.5% | -3.3% |

Figure 2: Citywide SCR Intakes by Reporter Group, NOV 13 – JAN 14 and NOV 14 – JAN 15

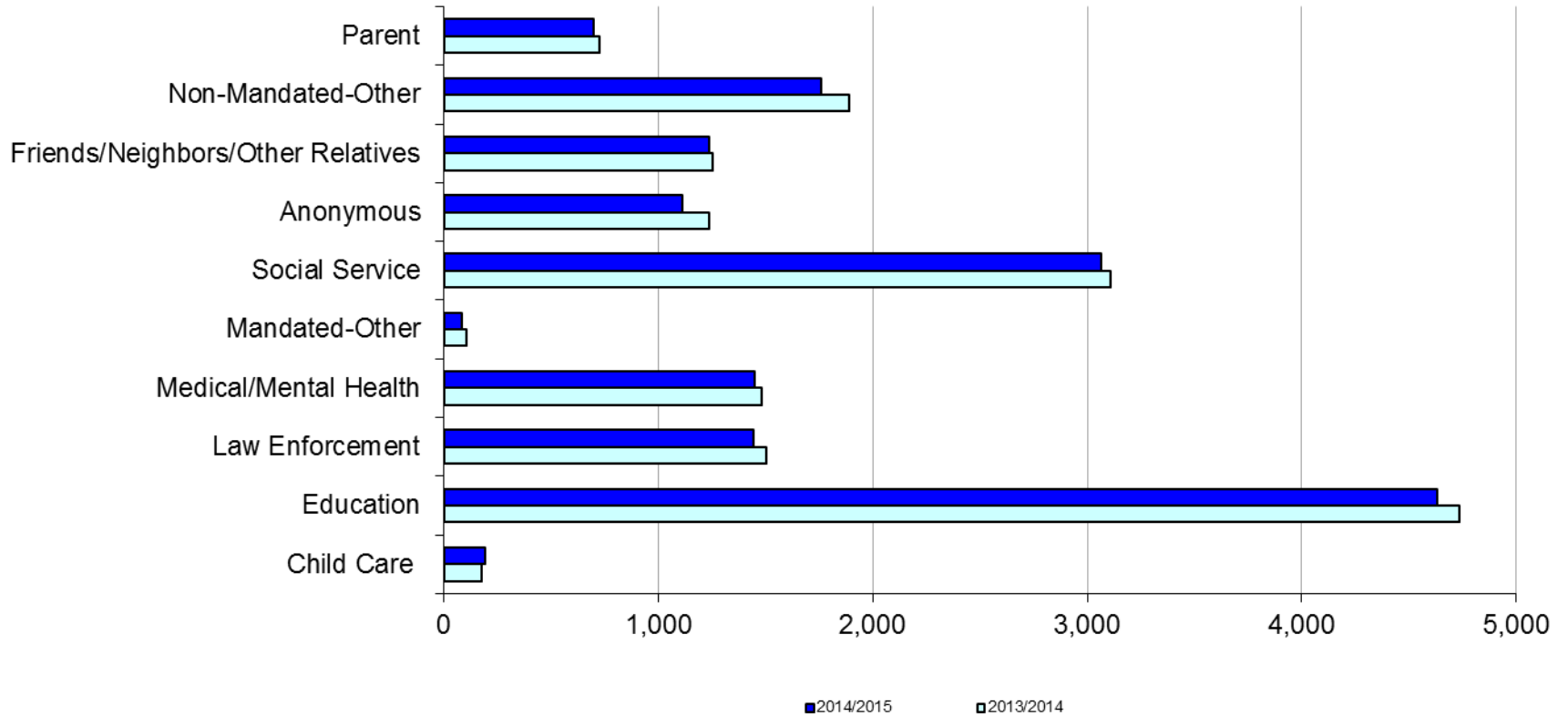
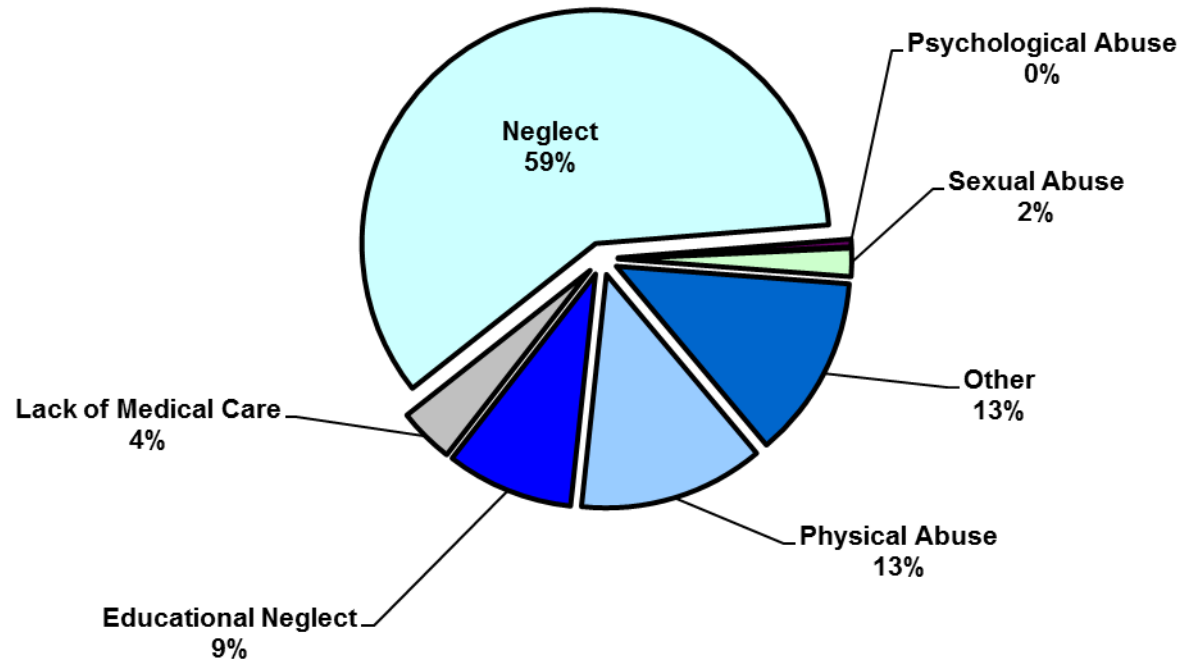


TABLE 2 - SCR Intakes by Reporter Group, NOV 13 – JAN 14 and NOV 14 – JAN 15

| Year | Child Care/ Substitute Care Personnel | Educational Personnel | Law Enforcement | Medical/ Mental Health Personnel | Mandated- Other | Social Service Personnel | Anonymous | Friends/ Neighbors/ Other Relatives | Non- Mandated- Other | Parent | Foster Parent | Total |
|----------------------|--|--------------------------|--------------------|--|--------------------|--------------------------------|-----------|--|----------------------------|--------|---------------|--------|
| Bronx | | | | | | | | | | | | |
| 2013/2014 | 49 | 1,462 | 435 | 424 | 25 | 963 | 330 | 352 | 594 | 193 | 0 | 4,827 |
| 2014/2015 | 56 | 1,457 | 340 | 407 | 21 | 954 | 330 | 368 | 560 | 188 | 1 | 4,682 |
| % Change | 14.3% | -0.3% | -21.8% | -4.0% | -16.0% | -0.9% | 0.0% | 4.5% | -5.7% | -2.6% | -- | -3.0% |
| Brooklyn | | | | | | | | | | | | |
| 2013/2014 | 44 | 1,349 | 376 | 394 | 30 | 828 | 400 | 390 | 519 | 182 | 0 | 4,512 |
| 2014/2015 | 45 | 1,289 | 392 | 348 | 27 | 705 | 321 | 336 | 460 | 168 | 0 | 4,091 |
| % Change | 2.3% | -4.4% | 4.3% | -11.7% | -10.0% | -14.9% | -19.8% | -13.8% | -11.4% | -7.7% | -- | -9.3% |
| Manhattan | | | | | | | | | | | | |
| 2013/2014 | 24 | 494 | 248 | 233 | 13 | 455 | 166 | 178 | 303 | 103 | 0 | 2,217 |
| 2014/2015 | 27 | 532 | 306 | 274 | 14 | 507 | 174 | 207 | 283 | 103 | 0 | 2,427 |
| % Change | 12.5% | 7.7% | 23.4% | 17.6% | 7.7% | 11.4% | 4.8% | 16.3% | -6.6% | 0.0% | -- | 9.5% |
| Queens | | | | | | | | | | | | |
| 2013/2014 | 26 | 1,076 | 284 | 271 | 22 | 559 | 212 | 216 | 302 | 121 | 1 | 3,090 |
| 2014/2015 | 31 | 981 | 269 | 266 | 11 | 602 | 168 | 216 | 290 | 104 | 0 | 2,938 |
| % Change | 19.2% | -8.8% | -5.3% | -1.8% | -50.0% | 7.7% | -20.8% | 0.0% | -4.0% | -14.0% | -- | -4.9% |
| Staten Island | | | | | | | | | | | | |
| 2013/2014 | 2 | 276 | 57 | 77 | 4 | 105 | 77 | 66 | 56 | 37 | 0 | 757 |
| 2014/2015 | 9 | 299 | 45 | 79 | 2 | 108 | 74 | 69 | 52 | 58 | 0 | 795 |
| % Change | 350.0% | 8.3% | -21.1% | 2.6% | -50.0% | 2.9% | -3.9% | 4.5% | -7.1% | 56.8% | -- | 5.0% |
| OSI | | | | | | | | | | | | |
| 2013/2014 | 24 | 43 | 17 | 29 | 6 | 78 | 30 | 18 | 78 | 52 | 1 | 376 |
| 2014/2015 | 18 | 45 | 23 | 36 | 6 | 74 | 33 | 15 | 83 | 48 | 2 | 383 |
| % Change | -25.0% | 4.7% | 35.3% | 24.1% | 0.0% | -5.1% | 10.0% | -16.7% | 6.4% | -7.7% | -- | 1.9% |
| Other | | | | | | | | | | | | |
| 2013/2014 | 7 | 38 | 87 | 56 | 3 | 121 | 24 | 32 | 39 | 38 | 0 | 445 |
| 2014/2015 | 4 | 29 | 71 | 40 | 2 | 114 | 11 | 26 | 29 | 28 | 2 | 356 |
| % Change | -42.9% | -23.7% | -18.4% | -28.6% | -33.3% | -5.8% | -54.2% | -18.8% | -25.6% | -26.3% | -- | -20.0% |
| Citywide | | | | | | | | | | | | |
| 2013/2014 | 176 | 4,738 | 1,504 | 1,484 | 103 | 3,109 | 1,239 | 1,252 | 1,891 | 726 | 2 | 16,224 |
| 2014/2015 | 190 | 4,632 | 1,446 | 1,450 | 83 | 3,064 | 1,111 | 1,237 | 1,757 | 697 | 5 | 15,672 |
| % Change | 8.0% | -2.2% | -3.9% | -2.3% | -19.4% | -1.4% | -10.3% | -1.2% | -7.1% | -4.0% | 150.0% | -3.4% |

Figure 3: SCR Allegations, NOV 14 – JAN 15



Total Allegations = 38,989

TABLE 3 - SCR Allegations, NOV 13 - JAN 14 and NOV 14 - JAN 15

| Year | Physical Abuse | Educational Neglect | Lack of Medical Care | Neglect | Psychological Abuse | Sexual Abuse | Other | Total |
|----------------------|----------------|---------------------|----------------------|---------|---------------------|--------------|--------|--------|
| Bronx | | | | | | | | |
| 2013/2014 | 1,278 | 1,427 | 526 | 7,104 | 65 | 207 | 1,561 | 12,168 |
| 2014/2015 | 1,431 | 1,317 | 477 | 7,299 | 62 | 240 | 1,508 | 12,334 |
| % Change | 12.0% | -7.7% | -9.3% | 2.7% | -4.6% | 15.9% | -3.4% | 1.4% |
| Brooklyn | | | | | | | | |
| 2013/2014 | 1,397 | 1,233 | 442 | 7,041 | 66 | 197 | 1,481 | 11,857 |
| 2014/2015 | 1,370 | 984 | 391 | 6,359 | 54 | 202 | 1,324 | 10,684 |
| % Change | -1.9% | -20.2% | -11.5% | -9.7% | -18.2% | 2.5% | -10.6% | -9.9% |
| Manhattan | | | | | | | | |
| 2013/2014 | 518 | 406 | 178 | 2785 | 19 | 85 | 596 | 4,587 |
| 2014/2015 | 550 | 390 | 185 | 2664 | 21 | 72 | 506 | 4,388 |
| % Change | 6.2% | -3.9% | 3.9% | -4.3% | 10.5% | -15.3% | -15.1% | -4.3% |
| Queens | | | | | | | | |
| 2013/2014 | 1,035 | 496 | 288 | 4,287 | 48 | 112 | 930 | 7,196 |
| 2014/2015 | 1,023 | 482 | 286 | 4,115 | 47 | 137 | 968 | 7,058 |
| % Change | -1.2% | -2.8% | -0.7% | -4.0% | -2.1% | 22.3% | 4.1% | -1.9% |
| Staten Island | | | | | | | | |
| 2013/2014 | 195 | 208 | 60 | 1,184 | 18 | 35 | 318 | 2,018 |
| 2014/2015 | 278 | 181 | 72 | 1,198 | 13 | 41 | 292 | 2,075 |
| % Change | 42.6% | -13.0% | 20.0% | 1.2% | -27.8% | 17.1% | -8.2% | 2.8% |
| OSI | | | | | | | | |
| 2013/2014 | 260 | 45 | 69 | 945 | 2 | 32 | 146 | 1,499 |
| 2014/2015 | 240 | 49 | 51 | 1,029 | 6 | 44 | 181 | 1,600 |
| % Change | -7.7% | 8.9% | -26.1% | 8.9% | 200.0% | 37.5% | 24.0% | 6.7% |
| Other | | | | | | | | |
| 2013/2014 | 97 | 52 | 56 | 662 | 5 | 30 | 198 | 1,100 |
| 2014/2015 | 106 | 31 | 34 | 486 | 3 | 23 | 167 | 850 |
| % Change | 9.3% | -40.4% | -39.3% | -26.6% | -40.0% | -23.3% | -15.7% | -22.7% |
| Citywide | | | | | | | | |
| 2013/2014 | 4,780 | 3,867 | 1,619 | 24,008 | 223 | 698 | 5,230 | 40,425 |
| 2014/2015 | 4,998 | 3,434 | 1,496 | 23,150 | 206 | 759 | 4,946 | 38,989 |
| % Change | 4.6% | -11.2% | -7.6% | -3.6% | -7.6% | 8.7% | -5.4% | -3.6% |

**TABLE 4 - Purchased Preventive Cases
Opened and Closed
January 2012 to January 2015**

| Month | Opened Cases | Closed Cases |
|-------------|--------------|--------------|
| 2012 | | |
| Jan-12 | 870 | 629 |
| Feb-12 | 889 | 835 |
| Mar-12 | 944 | 991 |
| Apr-12 | 997 | 870 |
| May-12 | 1,117 | 979 |
| Jun-12 | 965 | 869 |
| Jul-12 | 853 | 979 |
| Aug-12 | 917 | 1,007 |
| Sep-12 | 727 | 900 |
| Oct-12 | 875 | 915 |
| Nov-12 | 738 | 702 |
| Dec-12 | 938 | 871 |
| 2013 | | |
| Jan-13 | 960 | 884 |
| Feb-13 | 873 | 916 |
| Mar-13 | 962 | 1,171 |
| Apr-13 | 940 | 988 |
| May-13 | 864 | 1,337 |
| Jun-13 | 863 | 780 |
| Jul-13 | 868 | 1,004 |
| Aug-13 | 802 | 1,084 |
| Sep-13 | 844 | 724 |
| Oct-13 | 933 | 765 |
| Nov-13 | 901 | 685 |
| Dec-13 | 1,106 | 552 |
| 2014 | | |
| Jan-14 | 983 | 640 |
| Feb-14 | 987 | 679 |
| Mar-14 | 1,146 | 874 |
| Apr-14 | 1,074 | 896 |
| May-14 | 1,042 | 888 |
| Jun-14 | 976 | 762 |
| Jul-14 | 1,050 | 1,077 |
| Aug-14 | 944 | 943 |
| Sep-14 | 987 | 705 |
| Oct-14 | 1,050 | 819 |
| Nov-14 | 818 | 638 |
| Dec-14 | 1,268 | 721 |
| 2015 | | |
| Jan-15 | 814 | 716 |

**Table 5 - Referrals to Purchased Preventive Services by Source
January 2012 to January 2015**

| Month | Total Referrals | Division of Child Protection | Foster Care Agencies | PPRS Transfer | School | Self | Other Sources* |
|-------------|-----------------|------------------------------|----------------------|---------------|--------|------|----------------|
| 2012 | | | | | | | |
| Jan-12 | 1,431 | 66.5% | 0.7% | 8.5% | 3.6% | 3.8% | 17.0% |
| Feb-12 | 1,043 | 78.2% | 1.1% | 9.0% | 1.9% | 6.7% | 3.1% |
| Mar-12 | 1,525 | 73.6% | 0.9% | 6.0% | 1.8% | 3.9% | 13.8% |
| Apr-12 | 1,370 | 72.8% | 1.0% | 9.4% | 1.2% | 4.2% | 11.4% |
| May-12 | 1,463 | 70.9% | 1.0% | 7.6% | 1.1% | 4.4% | 15.0% |
| Jun-12 | 1,279 | 73.8% | 0.5% | 5.9% | 1.0% | 4.7% | 14.2% |
| Jul-12 | 1,308 | 77.4% | 1.2% | 7.0% | 0.3% | 3.7% | 10.5% |
| Aug-12 | 1,391 | 74.0% | 0.9% | 11.7% | 0.3% | 2.9% | 10.2% |
| Sep-12 | 1,110 | 70.5% | 1.9% | 9.6% | 1.2% | 5.0% | 11.9% |
| Oct-12 | 1,159 | 61.1% | 1.4% | 12.6% | 2.7% | 4.9% | 17.3% |
| Nov-12 | 1,106 | 67.0% | 1.0% | 9.9% | 2.2% | 4.7% | 15.3% |
| Dec-12 | 1,206 | 68.7% | 0.8% | 5.8% | 2.7% | 5.6% | 16.4% |
| CY 2012 | 15,391 | 71.3% | 1.0% | 8.5% | 1.6% | 4.5% | 13.1% |
| 2013 | | | | | | | |
| Jan-13 | 1,474 | 74.1% | 1.2% | 7.3% | 1.2% | 3.7% | 12.5% |
| Feb-13 | 1,308 | 75.8% | 1.1% | 8.0% | 1.6% | 2.9% | 10.6% |
| Mar-13 | 1,270 | 73.5% | 1.2% | 6.7% | 2.4% | 3.9% | 12.3% |
| Apr-13 | 1,421 | 77.9% | 0.8% | 7.4% | 0.9% | 3.0% | 10.1% |
| May-13 | 1,320 | 68.4% | 0.5% | 10.2% | 1.5% | 3.8% | 15.5% |
| Jun-13 | 953 | 69.2% | 1.2% | 9.4% | 2.6% | 5.0% | 12.6% |
| Jul-13 | 1,014 | 66.3% | 1.9% | 14.4% | 1.6% | 3.9% | 11.9% |
| Aug-13 | 1,212 | 70.5% | 0.7% | 11.8% | 0.7% | 4.7% | 11.6% |
| Sep-13 | 1,262 | 64.0% | 2.1% | 11.3% | 1.7% | 6.7% | 14.2% |
| Oct-13 | 1,319 | 61.0% | 1.1% | 9.0% | 2.9% | 7.5% | 18.5% |
| Nov-13 | 1,249 | 55.9% | 1.6% | 10.5% | 4.6% | 9.2% | 18.3% |
| Dec-13 | 1,464 | 62.2% | 1.2% | 8.2% | 2.3% | 9.2% | 17.0% |
| CY 2013 | 15,266 | 68.3% | 1.2% | 9.4% | 2.0% | 5.3% | 13.8% |
| 2014 | | | | | | | |
| Jan-14 | 1,537 | 70.0% | 1.2% | 6.6% | 2.3% | 5.8% | 14.2% |
| Feb-14 | 1,334 | 69.7% | 0.8% | 8.4% | 1.7% | 5.5% | 13.9% |
| Mar-14 | 1,612 | 70.0% | 1.4% | 8.6% | 1.6% | 5.3% | 13.1% |
| Apr-14 | 1,525 | 70.2% | 0.9% | 7.6% | 2.1% | 3.7% | 15.4% |
| May-14 | 1,580 | 74.4% | 0.7% | 8.3% | 1.4% | 5.2% | 10.0% |
| Jun-14 | 1,550 | 78.6% | 1.2% | 6.3% | 1.2% | 3.2% | 9.4% |
| Jul-14 | 1,659 | 79.6% | 1.5% | 6.7% | 0.4% | 4.2% | 7.6% |
| Aug-14 | 1,395 | 72.2% | 1.6% | 10.8% | 0.3% | 4.9% | 10.3% |
| Sep-14 | 1,597 | 49.4% | 1.5% | 7.6% | 0.3% | 4.5% | 36.8% |
| Oct-14 | 1,634 | 68.2% | 1.9% | 10.0% | 1.2% | 4.6% | 14.1% |
| Nov-14 | 1,311 | 66.4% | 0.9% | 14.3% | 2.4% | 3.9% | 12.1% |
| Dec-14 | 1,785 | 71.1% | 1.4% | 8.8% | 2.9% | 4.8% | 11.0% |
| 2015 | | | | | | | |
| Jan-15 | 1,432 | 76.5% | 1.5% | 9.8% | 1.4% | 3.1% | 7.6% |

*Other Community Sources includes the Department of Homeless Services, Family Court, FAP, Hospitals and Medical facilities, the NYC Housing Authority, PINS/DAS, Probation, and Sponsor Agencies.