

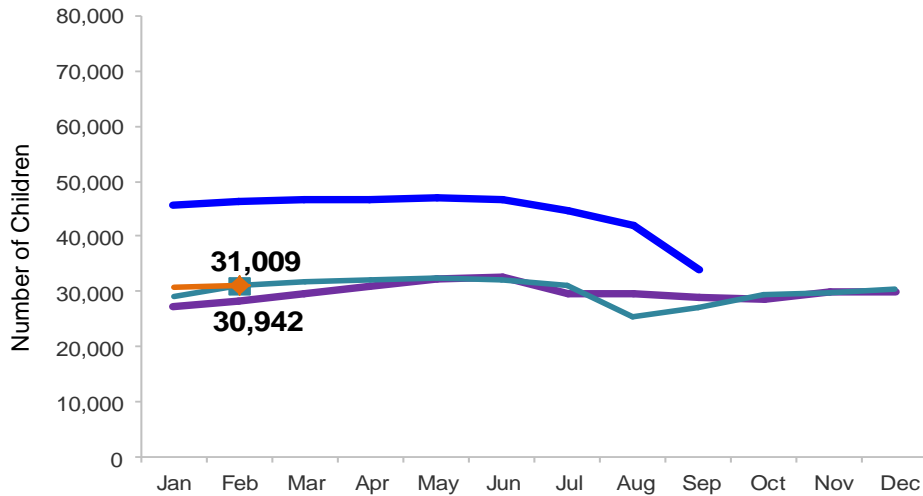


Flash

March 2015

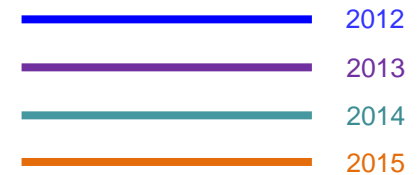
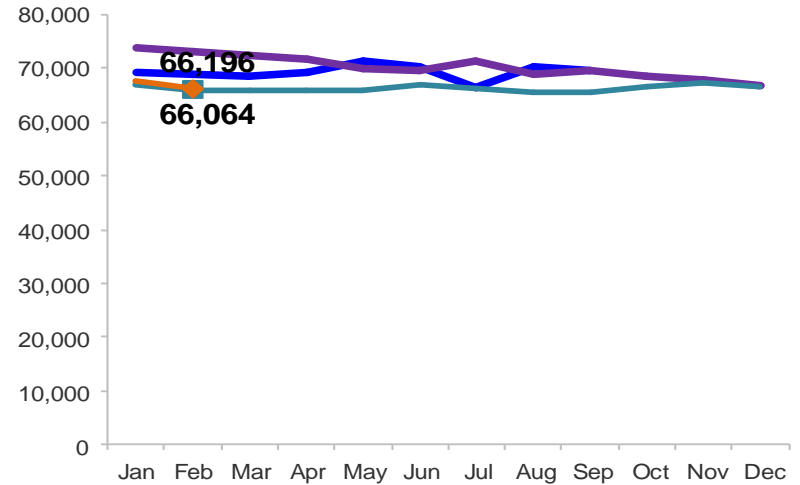
Children Enrolled in Contracted EarlyLearn Programs

January 2012 – February 2015 (End of Month)



Children Using Vouchers for Child Care

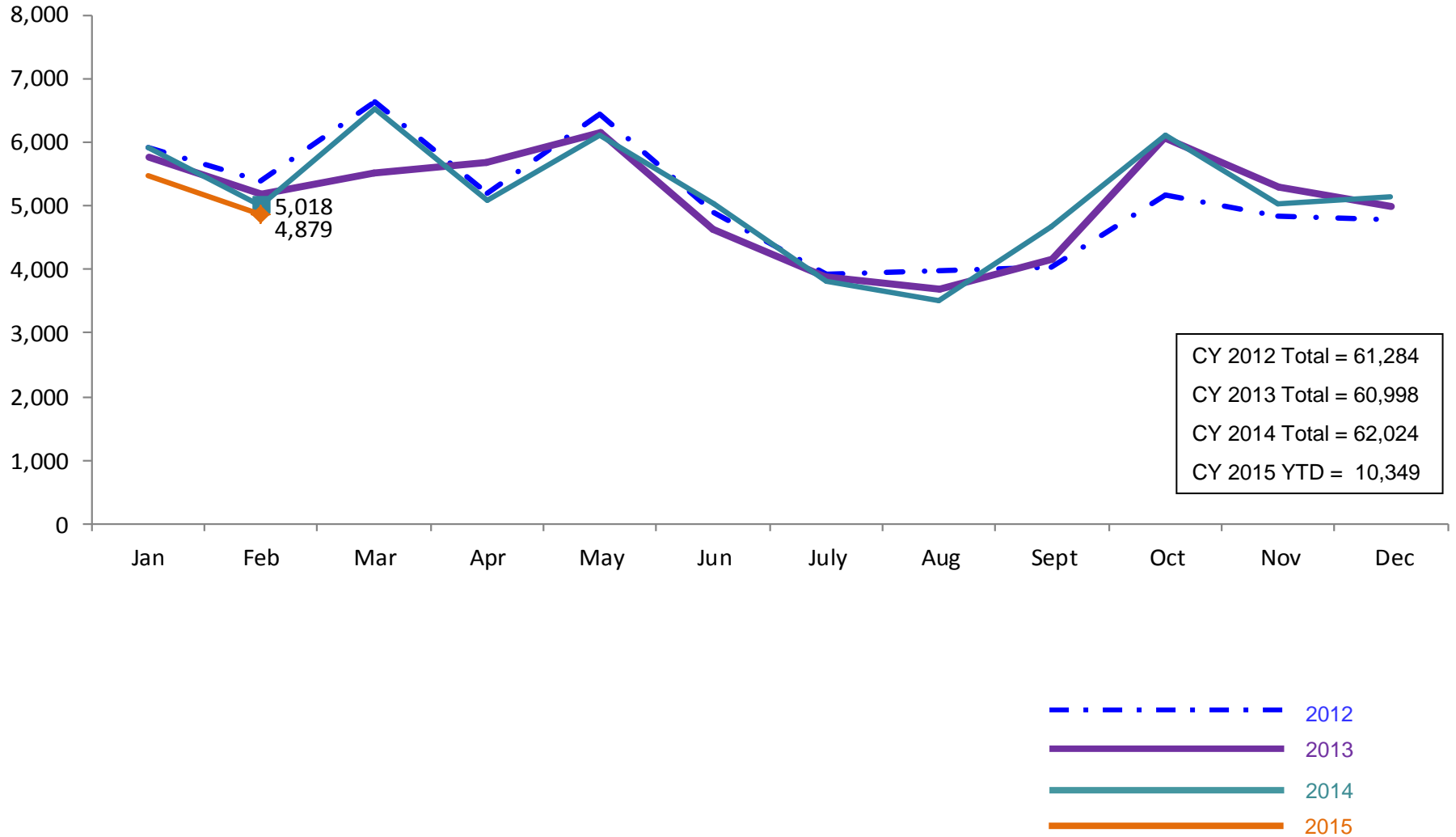
January 2012 – February 2015 (End of Month)



Note: Beginning October 1, 2012 ACS converted its early care and education system to a new model, EarlyLearn NYC. Enrollment data for the transitional months of October – December 2012 are not available because contractors were in the midst of implementing the data collection systems.

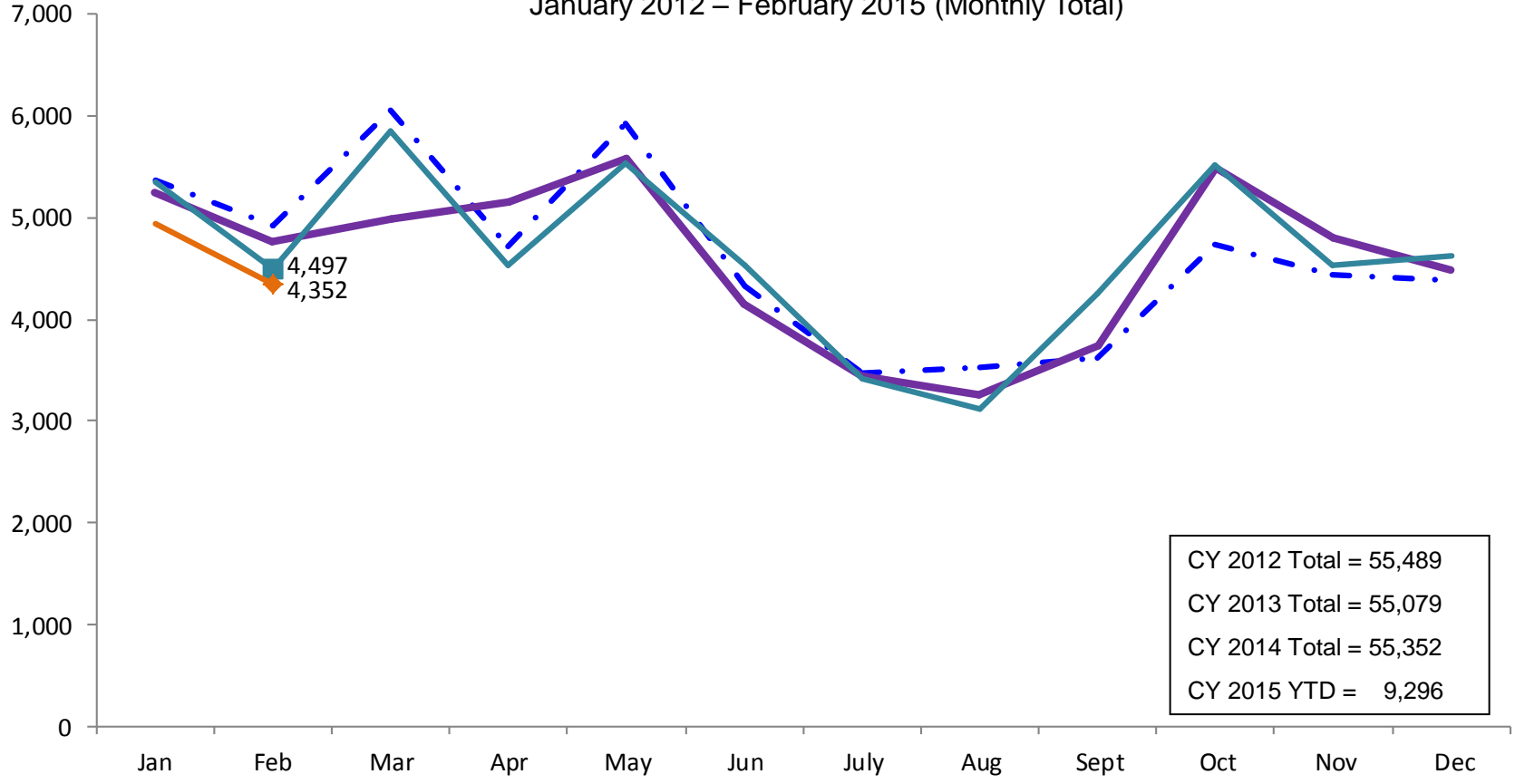
SCR Intakes

January 2012 – February 2015 (Monthly Total)



SCR Consolidated Investigations

January 2012 – February 2015 (Monthly Total)

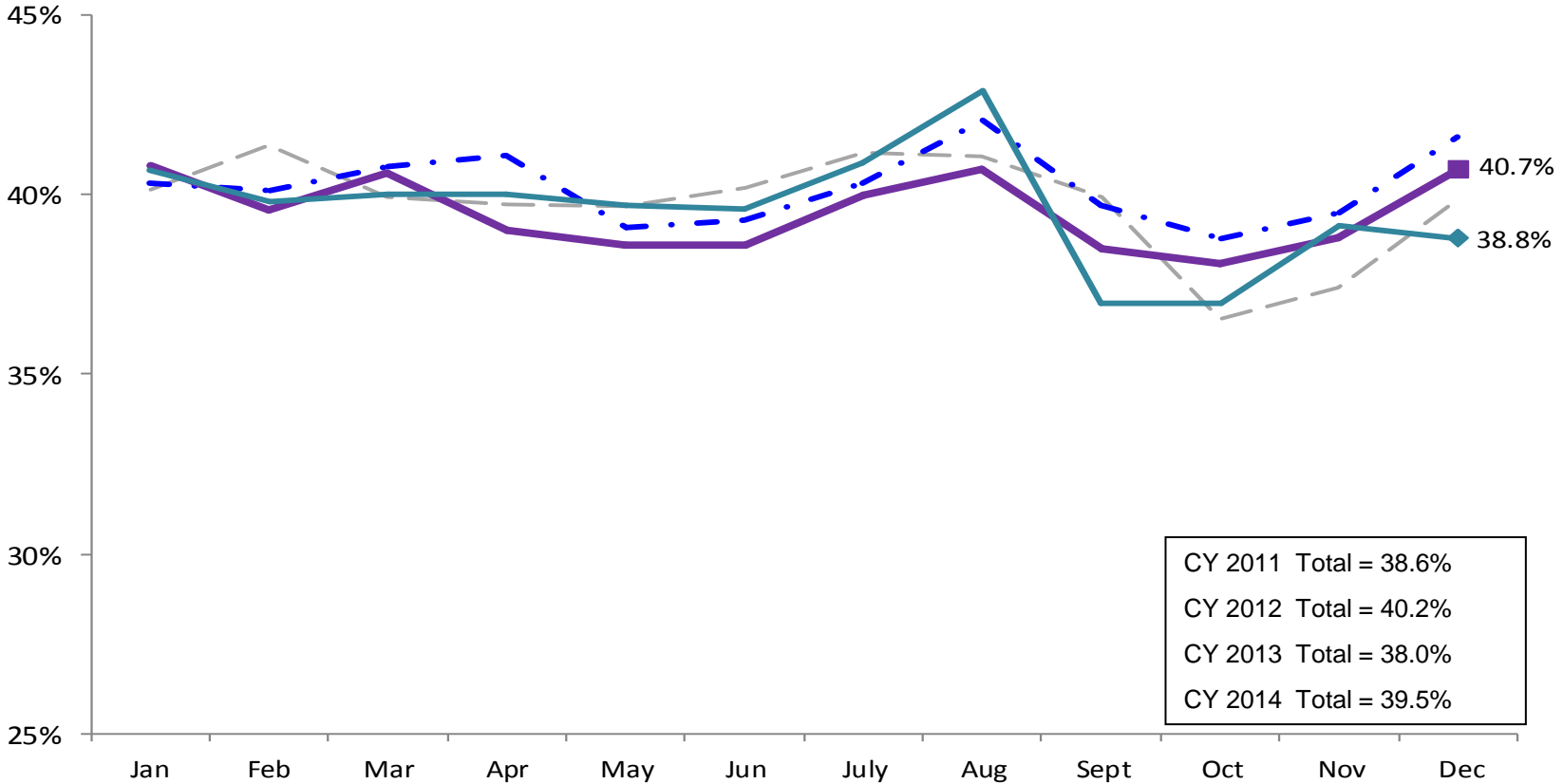


CY 2012 Total = 55,489
CY 2013 Total = 55,079
CY 2014 Total = 55,352
CY 2015 YTD = 9,296

- 2012
- 2013
- 2014
- 2015

SCR Investigation Indication Rate

January 2011 – December 2014



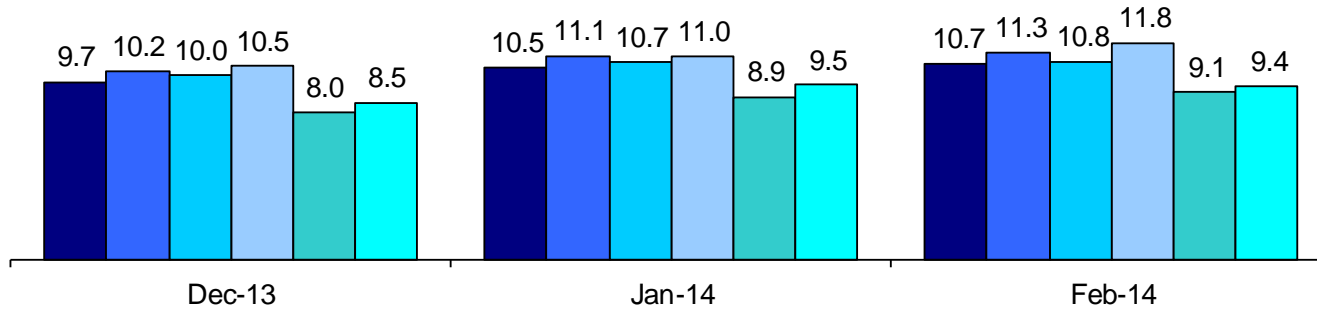
CY 2011 Total = 38.6%
 CY 2012 Total = 40.2%
 CY 2013 Total = 38.0%
 CY 2014 Total = 39.5%



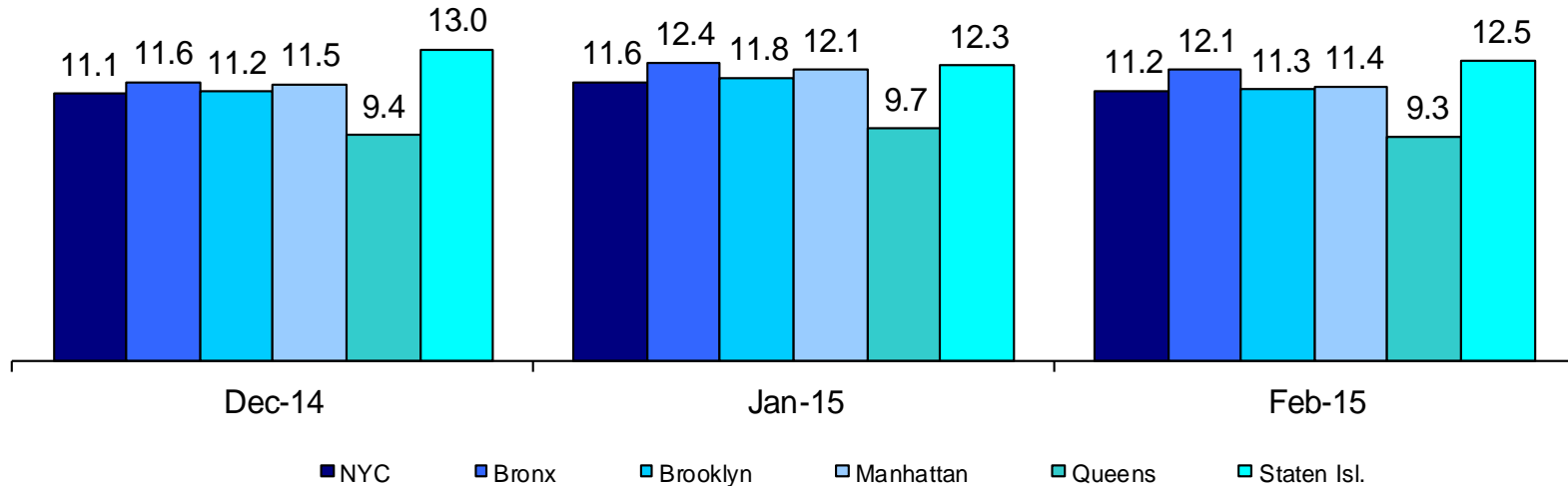
Average P/D Combined Caseload*

December 2013 – February 2014 & December 2014 – February 2015

2013



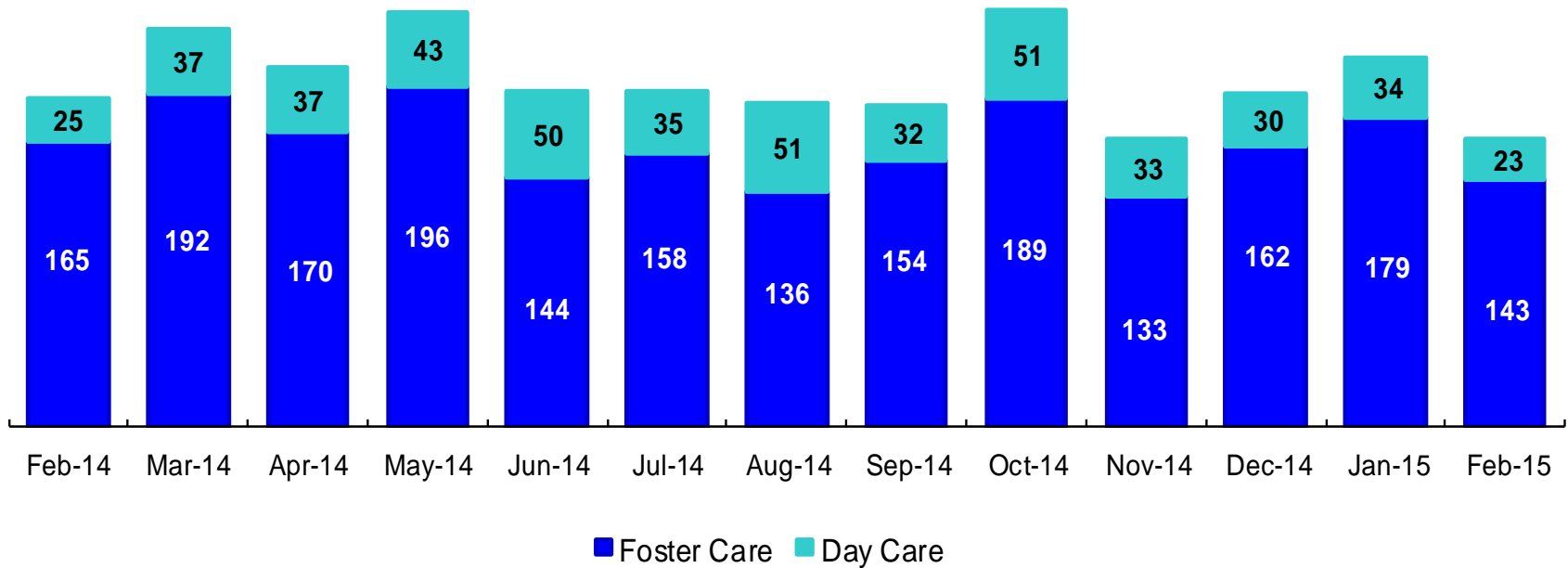
2014



* Caseloads are of protective/diagnostic caseworkers only and exclude the caseloads carried by Level I and Level II Supervisors.

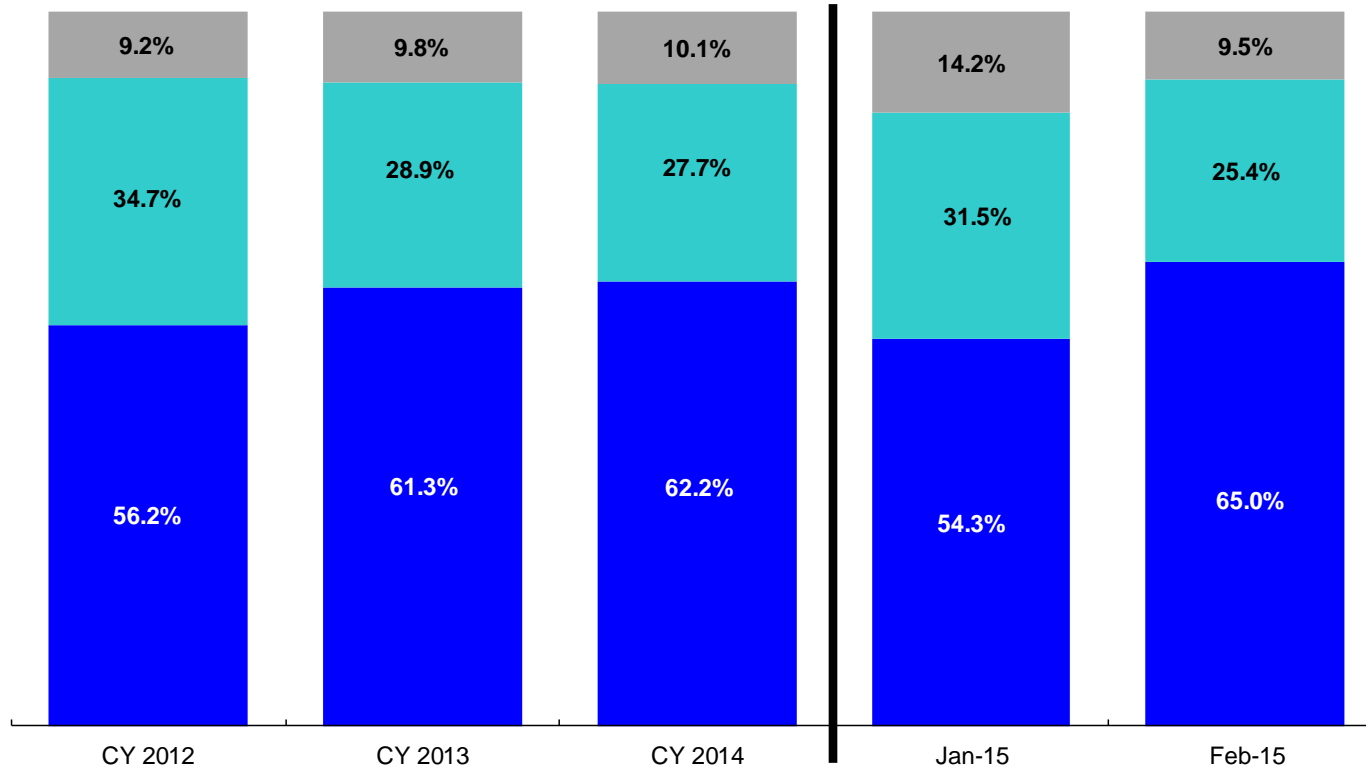
OSI Investigations by Program

February 2014 – February 2015



	Feb 2014	Mar 2014	Apr 2014	May 2014	Jun 2014	July 2014	Aug 2014	Sep 2014	Oct 2014	Nov 2014	Dec 2014	Jan 2015	Feb 2015
Number of Investigations	190	229	207	239	194	193	187	186	240	166	192	213	166

Article 10 Total Filings & Filing Outcomes, CY 2012 – February 2015

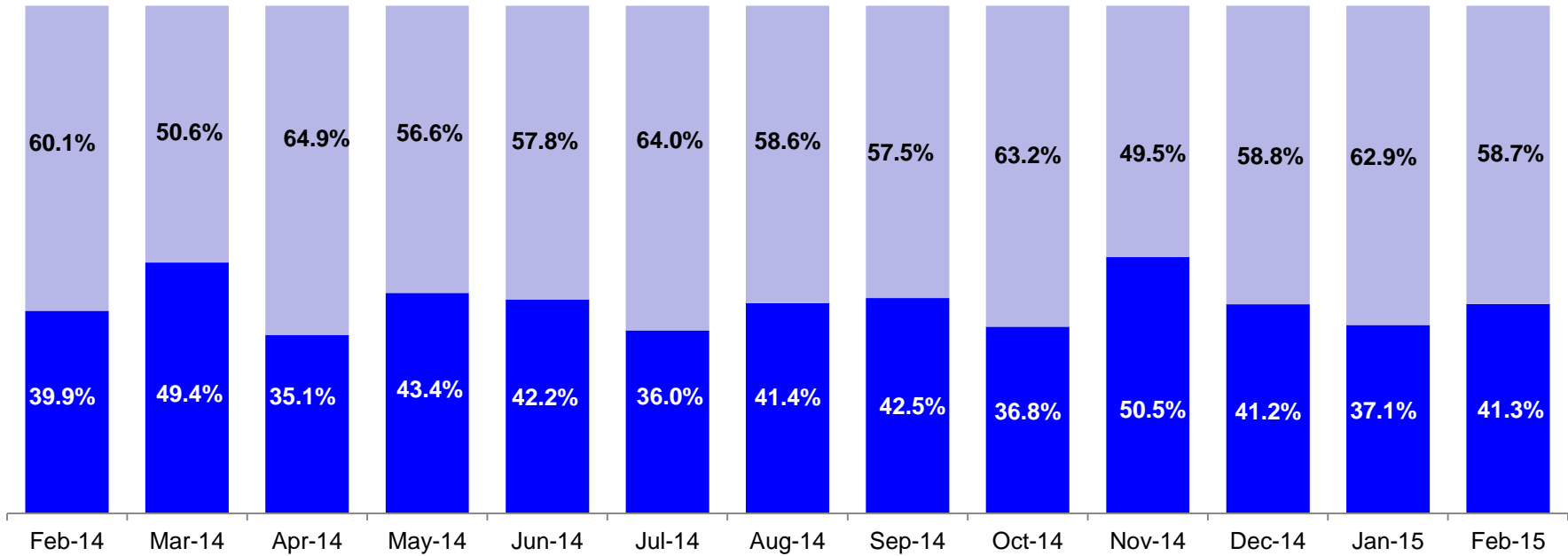


■ Court Ordered Supervision ■ Removal ■ Other/Unspecified

	CY 2012	CY 2013	CY 2014	Jan 2015	Feb 2015
Art.10 Filings	8,913	9,318	9,900	812	924

Note: The category “Other/Unspecified” includes released with no supervision, no order issued and no outcome specified. Outcomes of cases heard the next day are not captured in this report

Article 10 Filing Removals, February 2014 – February 2015



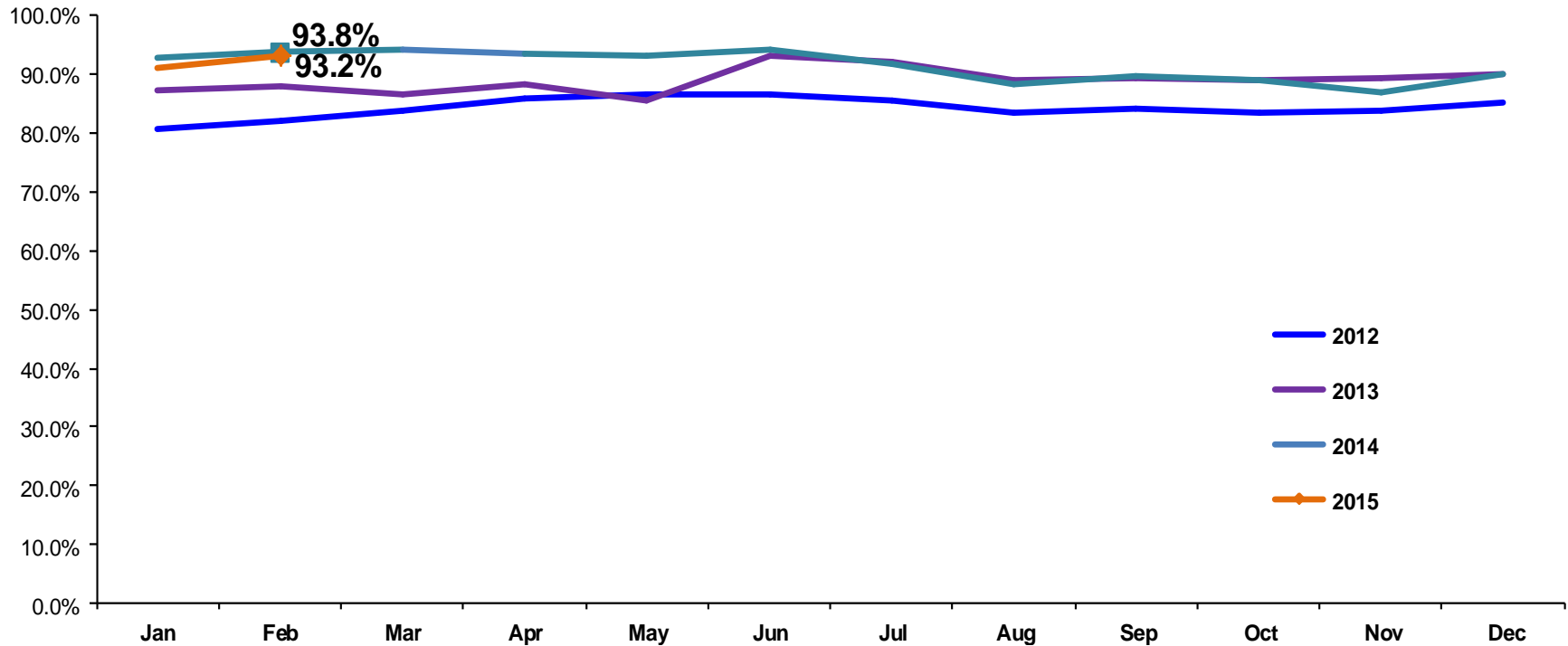
■ Pre-Filing Emergency Removals (court approved at initial hearing) ■ Post-Filing Removals (court ordered at initial hearing)

	Feb 2014	Mar 2014	Apr 2014	May 2014	Jun 2014	Jul 2014	Aug 2014	Sep 2014	Oct 2014	Nov 2014	Dec 2014	Jan 2015	Feb 2015
Number of Removals	243	255	239	267	249	172	227	179	231	194	262	256	235

PPRS Utilization Rate

January 2012 – February 2015 (End of Month)

General Preventive



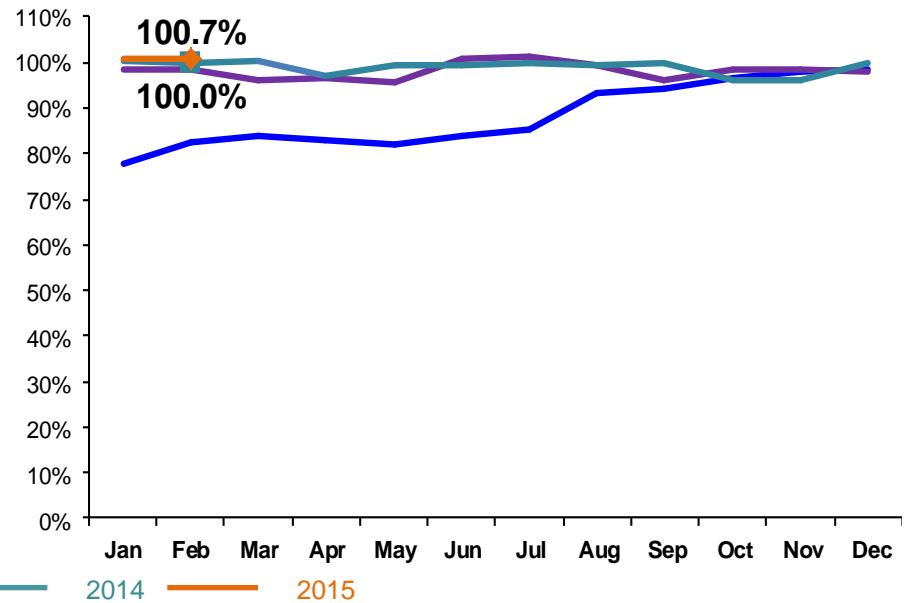
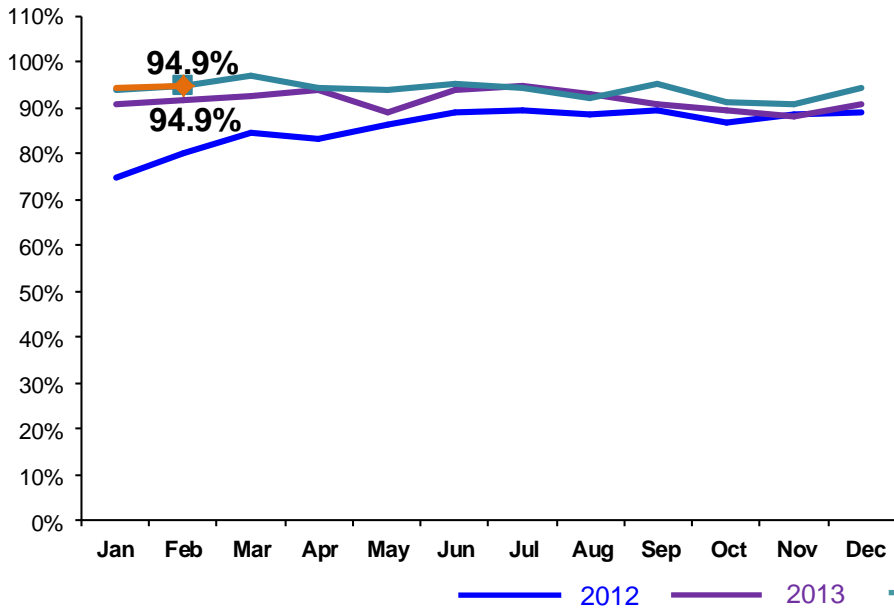
Notes: 1) Beacons programs are included in the GP utilization rates. 2) During June-October 2013 GP programs in the process of converting to EBMs were excluded from the GP utilization statistics.

PPRS Utilization Rate

January 2012 – February 2015 (End of Month)

Family Treatment Rehabilitation

Medically Fragile

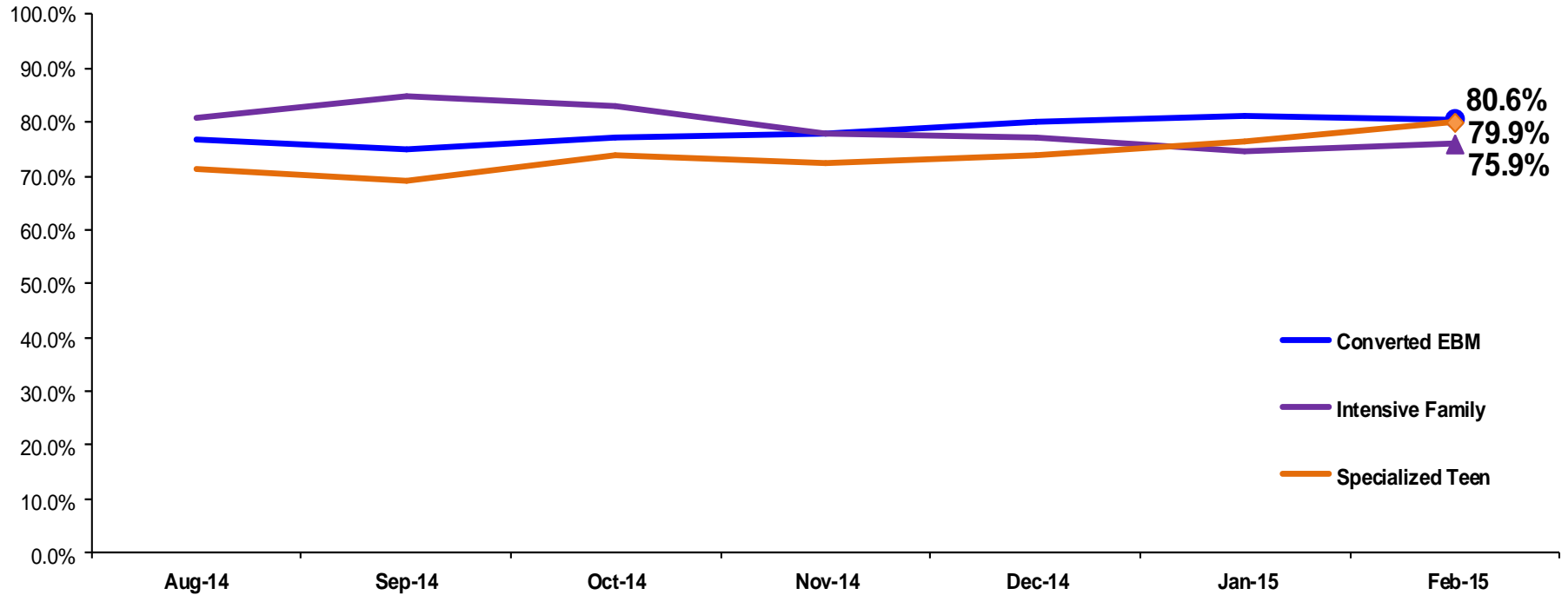


Note: During June -October 2013 FTR programs in the process of converting to EBMs were excluded from the FTR utilization statistics.

PPRS Utilization Rate

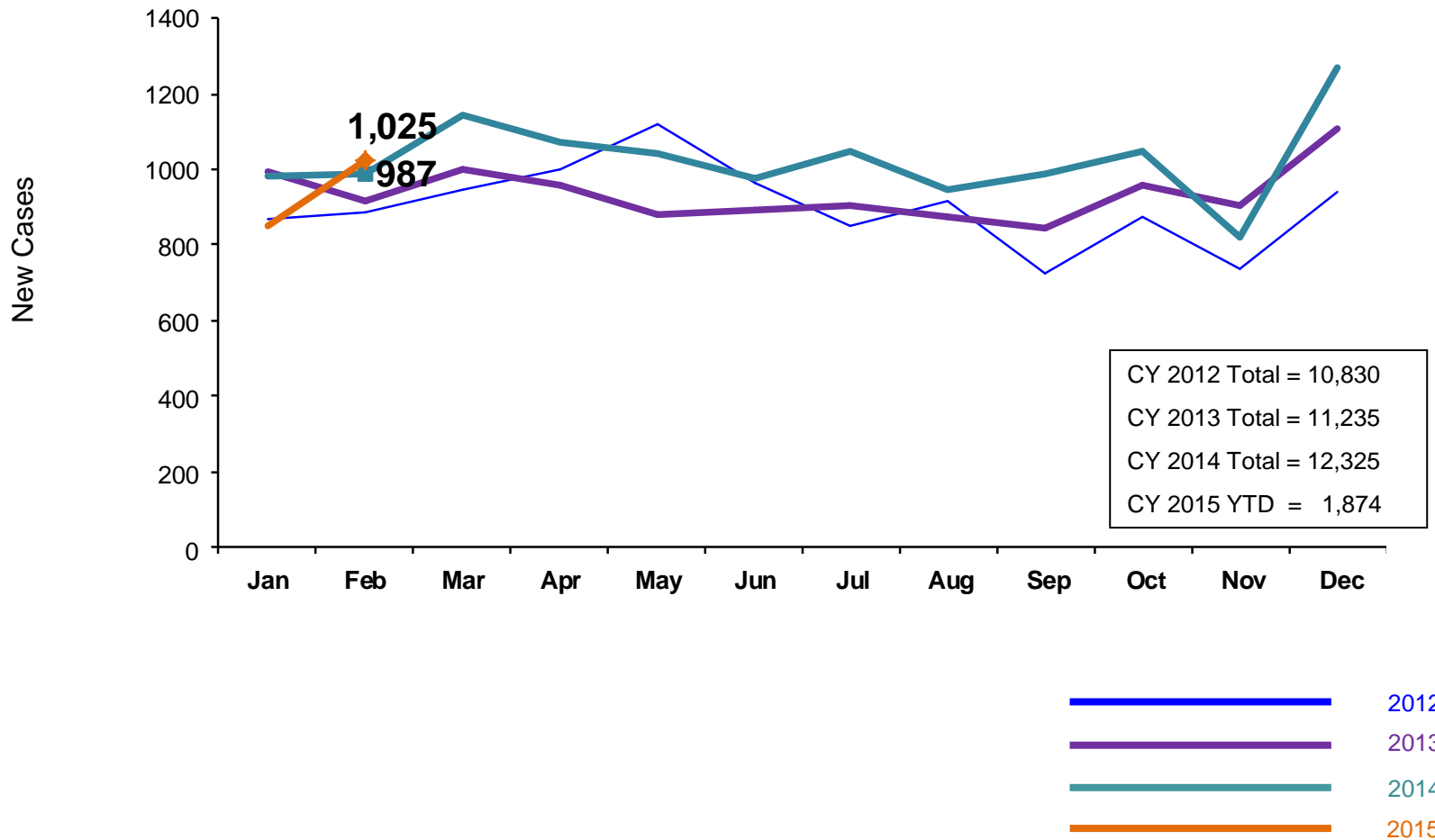
August 2014 – February 2015 (End of Month)

Converted EBM, Intensive Family and Specialized Teen



New Preventive Cases*

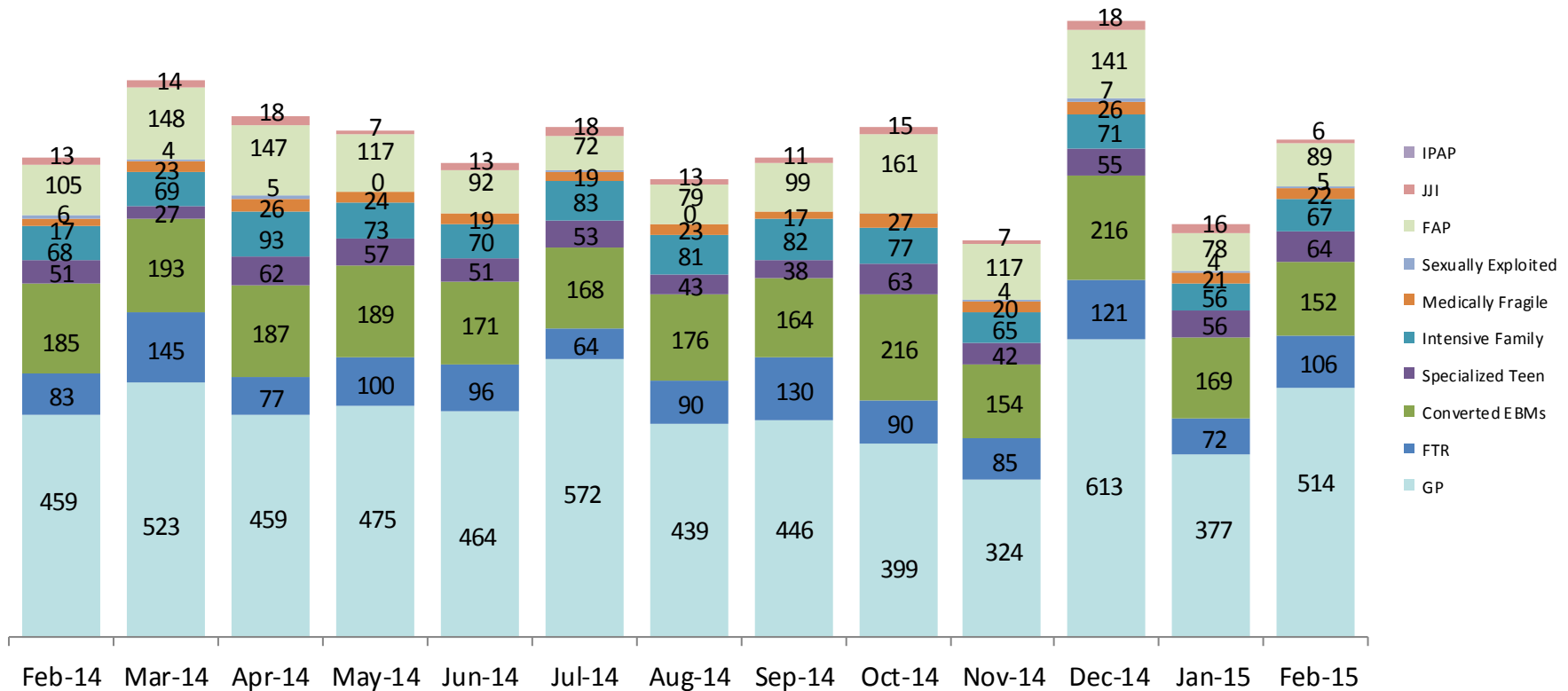
January 2012 – February 2015



*Notes: 1) New preventive cases do not include cases transferred from one preventive program to another. 2) See Pages 36 and 37 of the Appendix for supporting data.

New Preventive Cases* by Program Type

February 2014 – February 2015

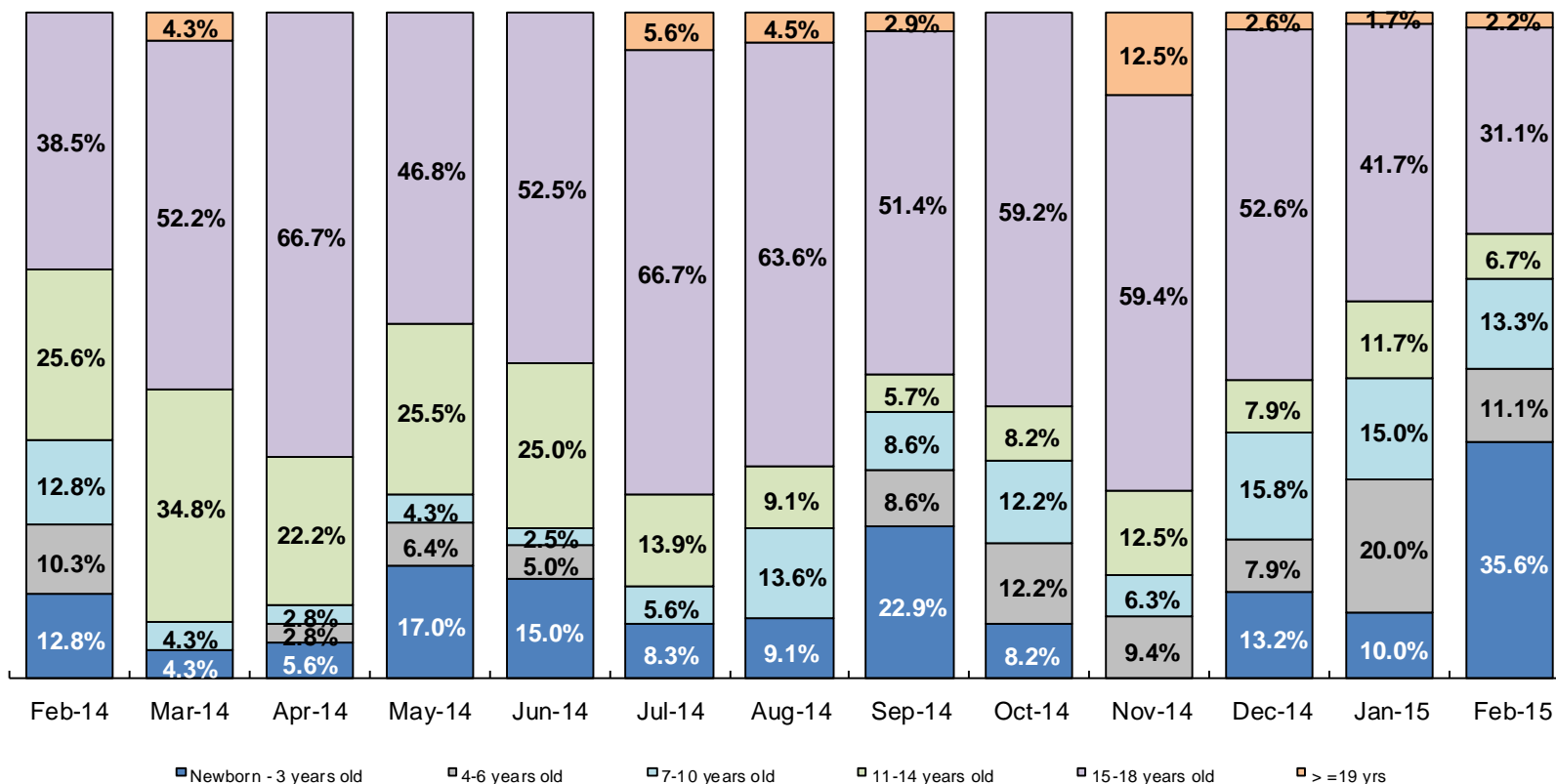


	Feb 2014	Mar 2014	Apr 2014	May 2014	Jun 2014	Jul 2014	Aug 2014	Sep 2014	Oct 2014	Nov 2014	Dec 2014	Jan 2015	Feb 2015
Number of New Preventive Cases	987	1,146	1,074	1,042	976	1,050	944	987	1,050	818	1,268	849	1,025

Note: New preventive cases do not include cases transferred from one preventive program to another.

Pre-Placement Residential Population by Age*

February 2014 – February 2015

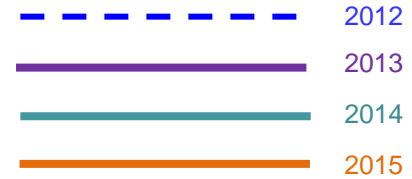
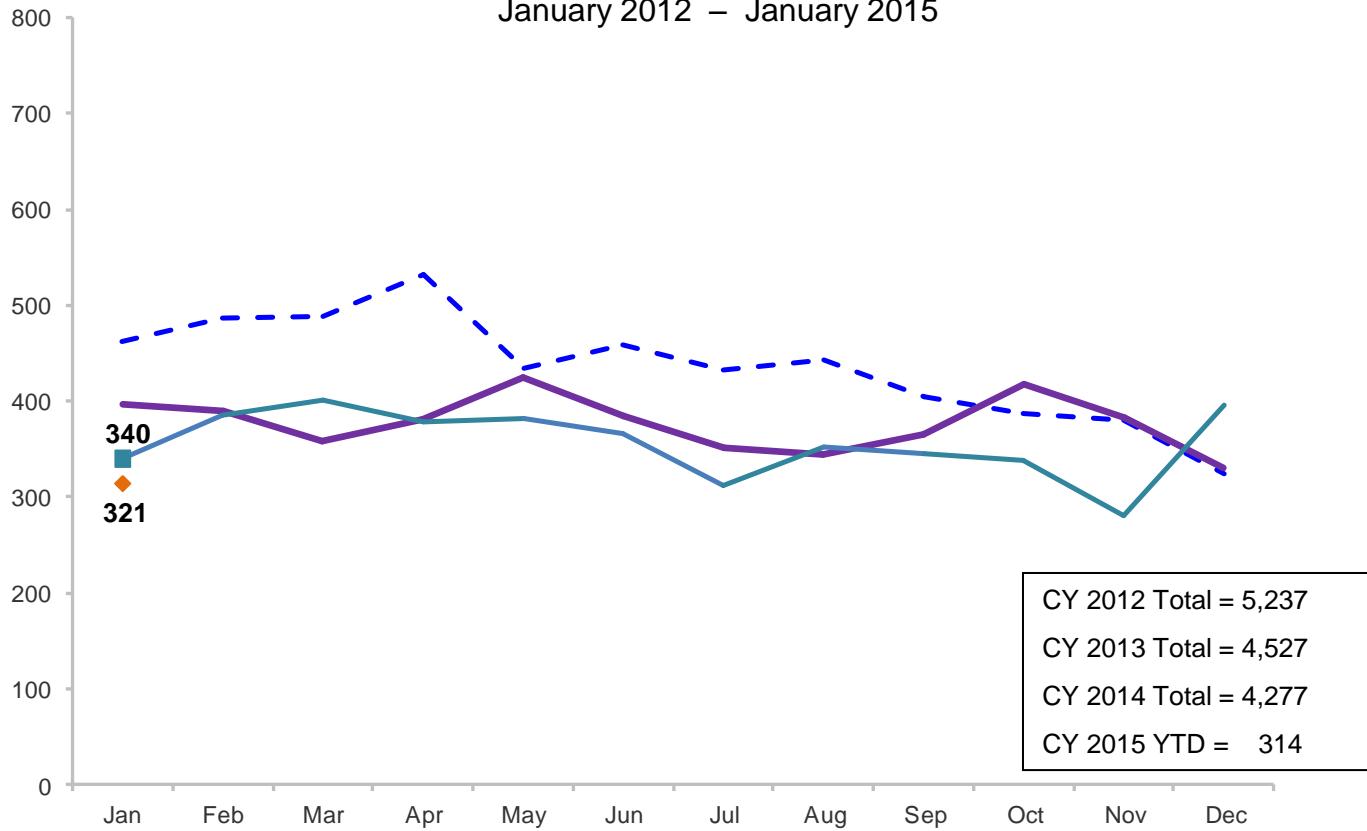


	Feb 2014	Mar 2014	Apr 2014	May 2014	Jun 2014	Jul 2014	Aug 2014	Sep 2014	Oct 2014	Nov 2014	Dec 2014	Jan 2015	Feb 2015
Number of Children	39	23	36	47	40	36	22	35	49	32	38	60	45

*Beginning in December 2014 the pre-placement residential population includes children at the Children’s Center and at the MercyFirst Reception Center.

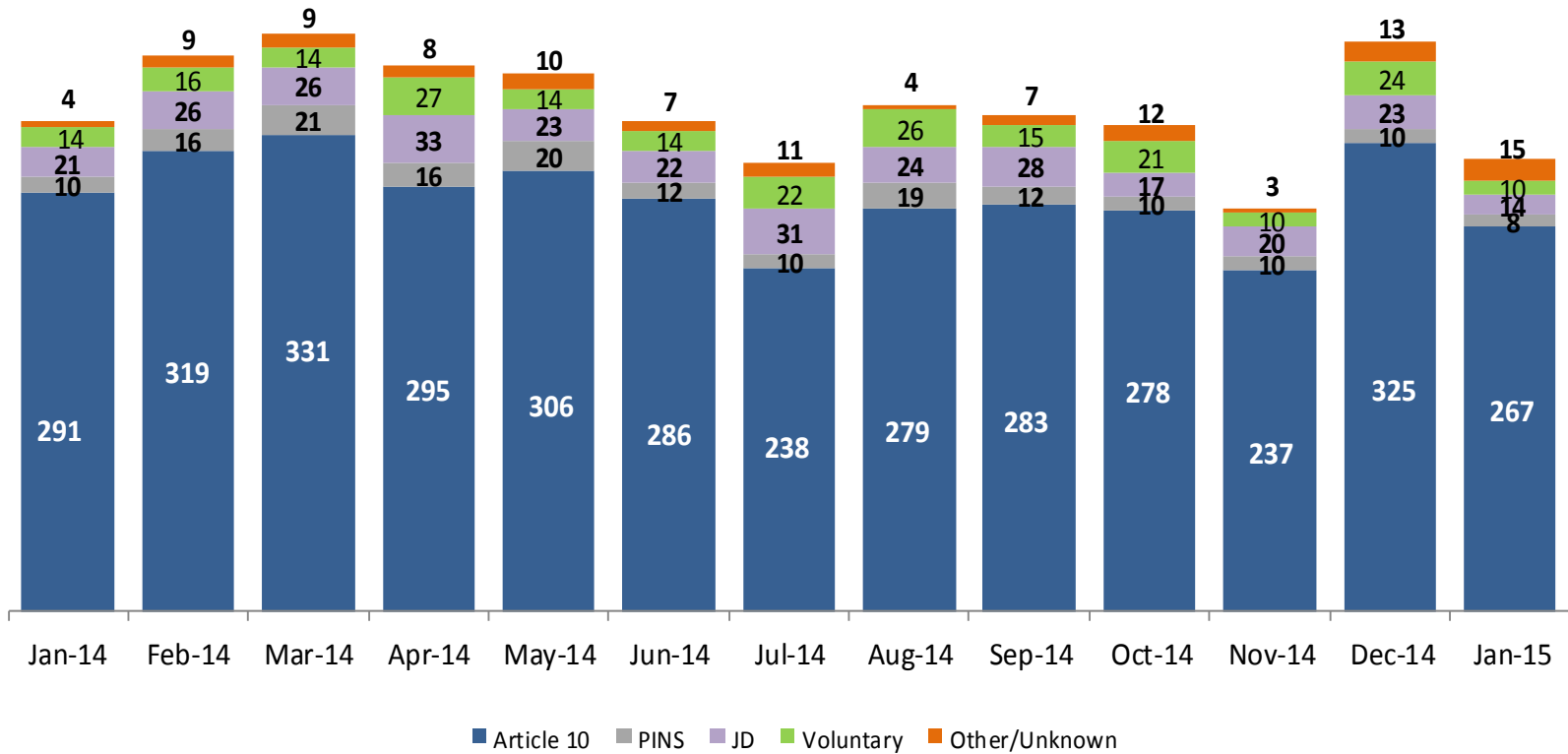
Total Monthly Placements

January 2012 – January 2015



Reason for Initial Placements into Foster Care

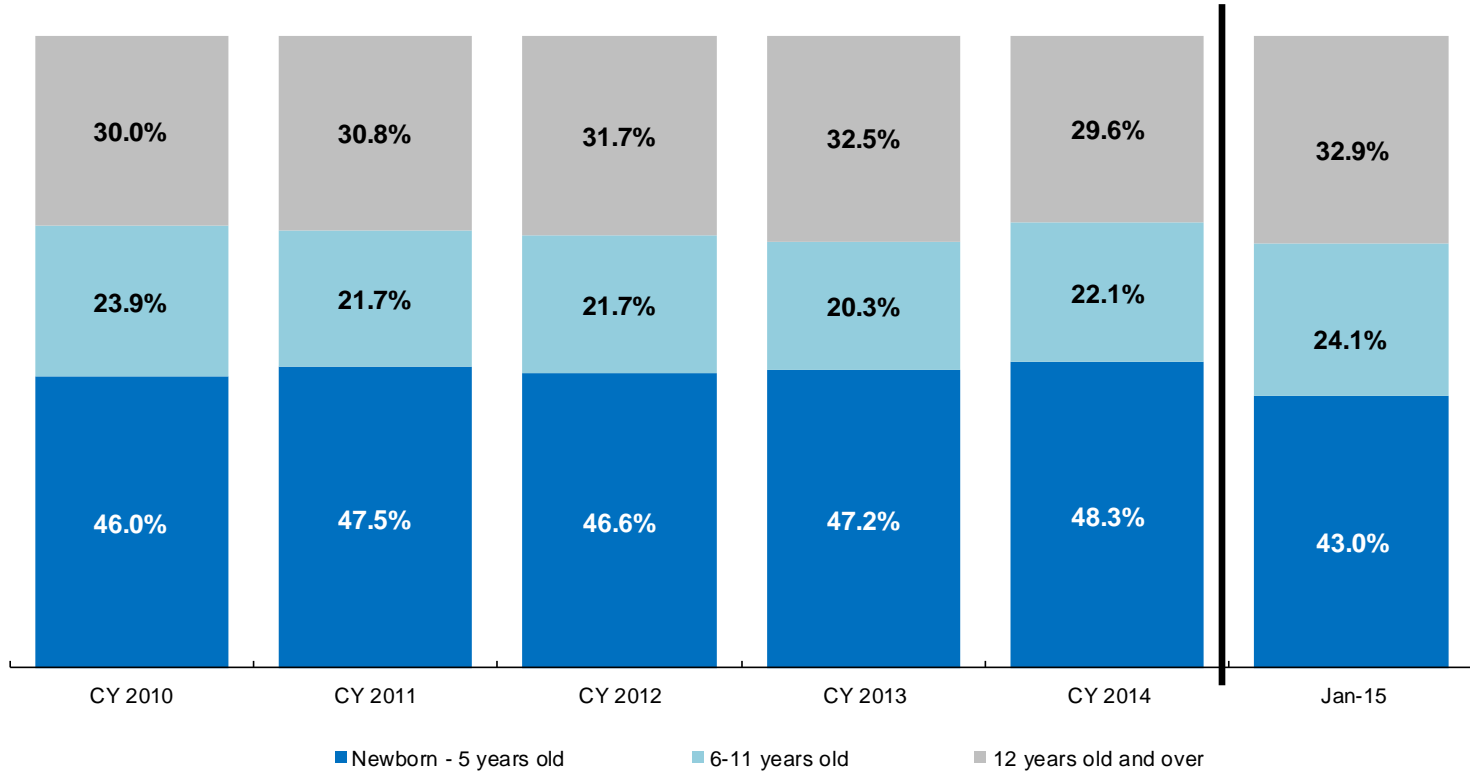
January 2014 – January 2015



	Jan 2014	Feb 2014	Mar 2014	April 2014	May 2014	Jun 2014	Jul 2014	Aug 2014	Sep 2014	Oct 2014	Nov 2014	Dec 2014	Jan 2015
Number of Placements	340	386	401	379	382	367	312	352	345	338	280	395	314

Placements* by Age

CY 2010 – CY 2014 and January 2015

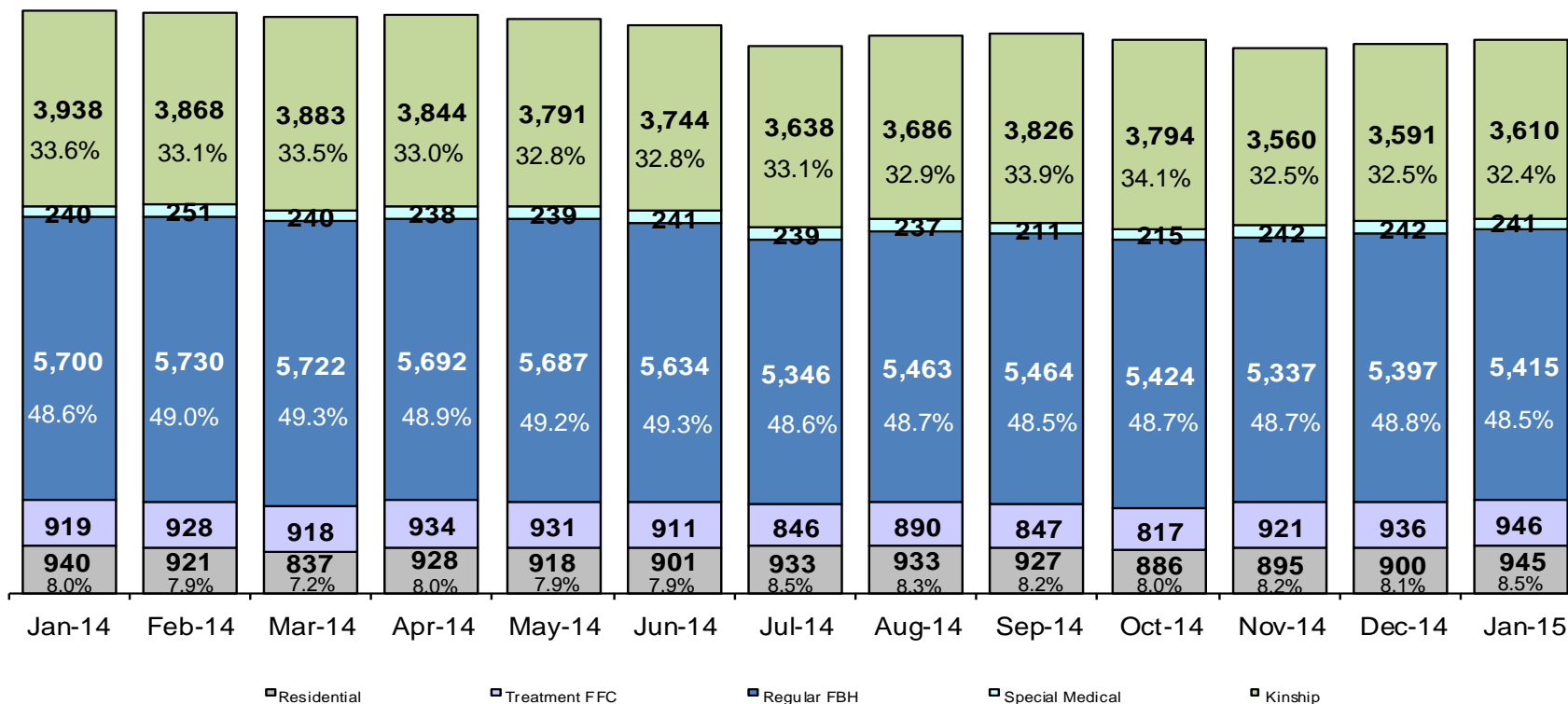


	CY 2010	CY 2011	CY 2012	CY 2013	CY 2014	Jan 2015
Placements	5,842	4,941	4,823	4,170	3,982	307

*Excludes JD placements.

Children in Foster Care*

January 2014 – January 2015 (end of month)

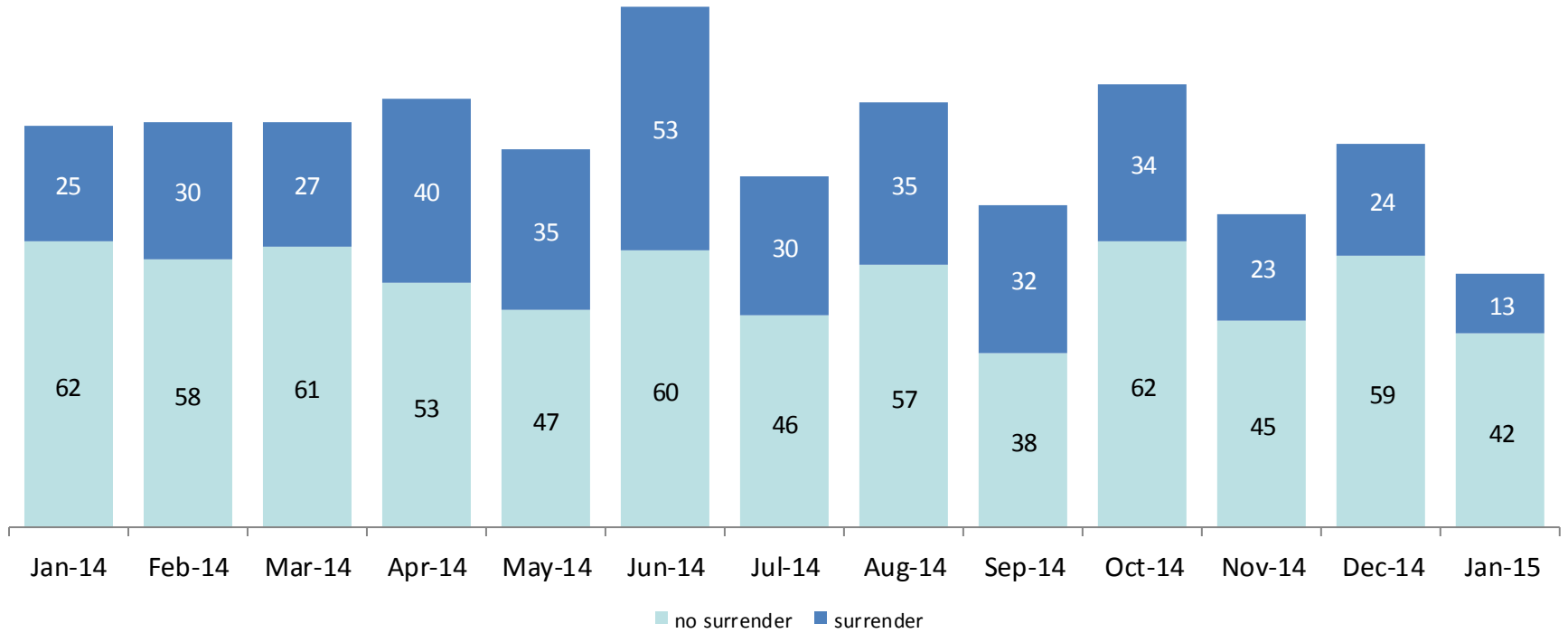


	Jan 2014	Feb 2014	Mar 2014	Apr 2014	May 2014	Jun 2014	Jul 2014	Aug 2014	Sep 2014	Oct 2014	Nov 2014	Dec 2014	Jan 2015
Number in Foster Care	11,737	11,698	11,600	11,636	11,566	11,431	11,002	11,209	11,275	11,136	10,955	11,066	11,157

*Excludes JD placements and includes approximately 400 young children who are living in foster homes or residential care facilities with their mothers who are in foster care (8D children).

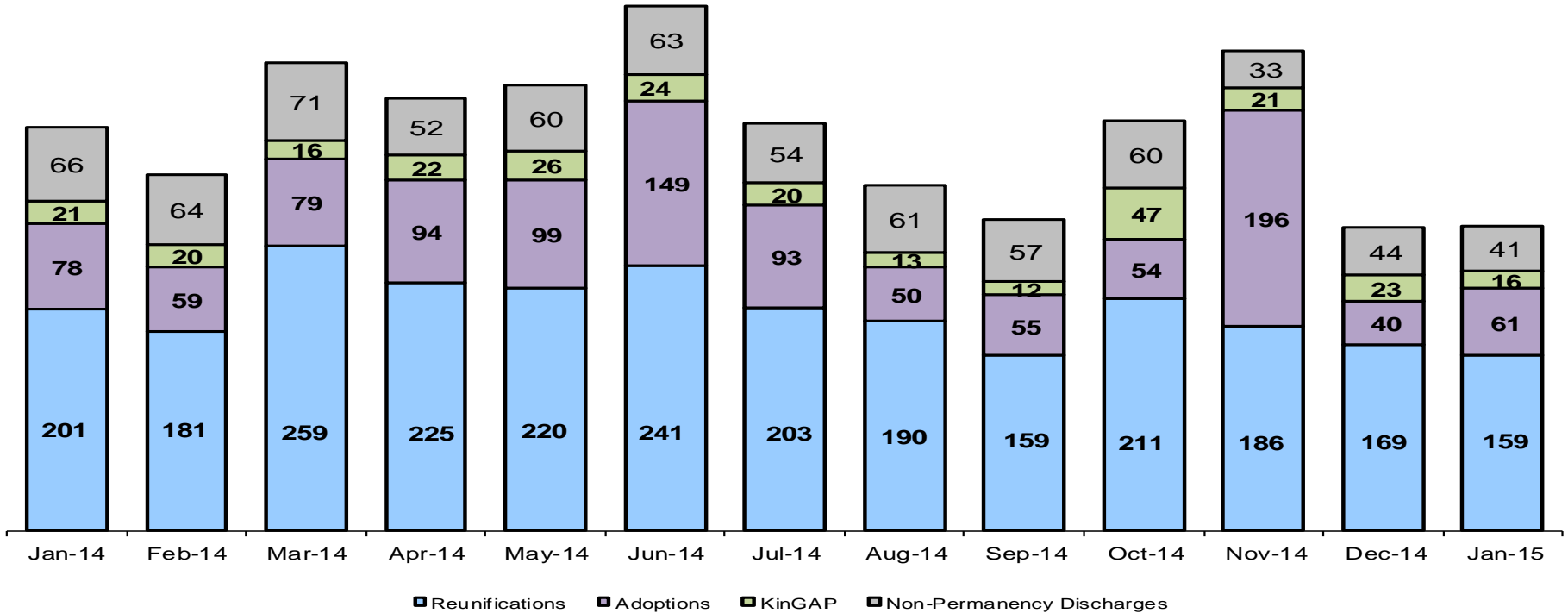
Note: The treatment FFC census counts have been revised for December 2013 –November 2014 to capture all children in treatment FFC placements. 19

Children Freed for Adoption, Surrender by at Least One Parent January 2014 – January 2015



	Jan 2014	Feb 2014	Mar 2014	Apr 2014	May 2014	Jun 2014	Jul 2014	Aug 2014	Sep 2014	Oct 2014	Nov 2014	Dec 2014	Jan 2015
Number Freed for Adoption	87	88	88	93	82	113	76	92	70	96	68	83	55

Permanency and Non-Permanency* Discharges from Foster Care** January 2014 – January 2015

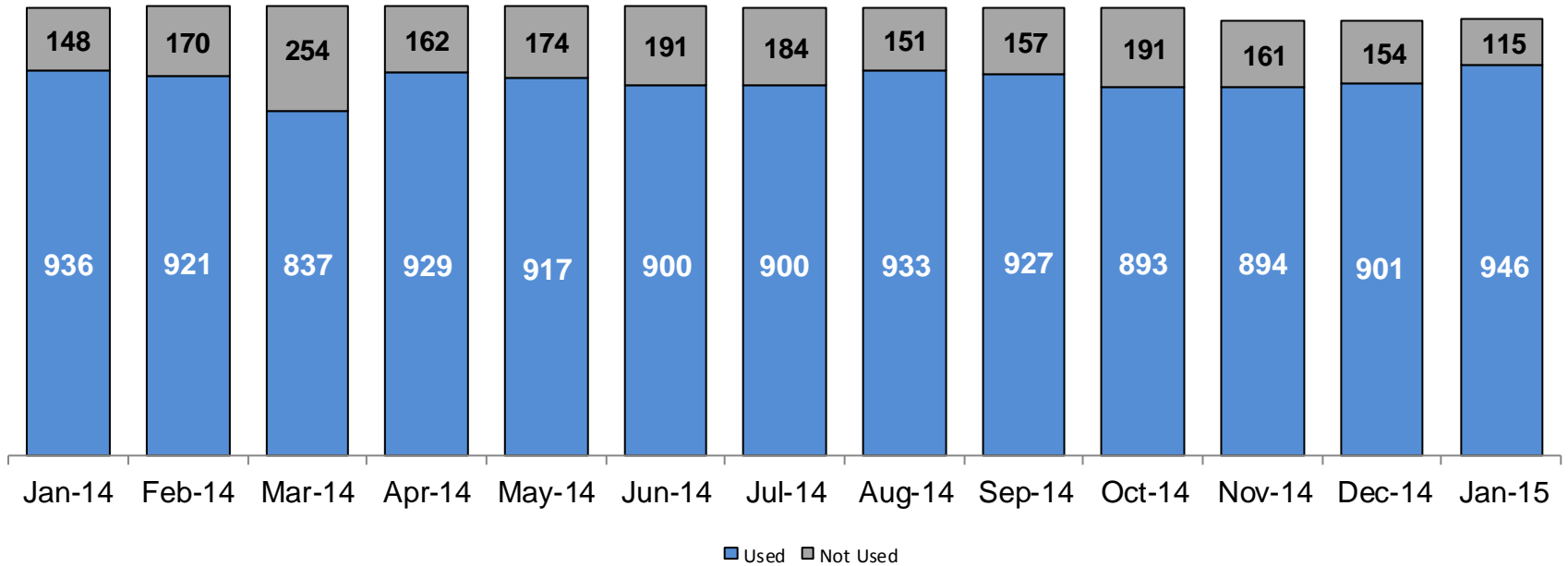


	Jan 2014	Feb 2014	Mar 2014	Apr 2014	May 2014	Jun 2014	Jul 2014	Aug 2014	Sep 2014	Oct 2014	Nov 2014	Dec 2014	Jan 2015
Number of Discharges	366	324	425	393	405	477	370	314	283	372	436	276	277

*Non-permanency discharges include AWOL, APPLA , other discharge destinations such as psychiatric institutions and correctional facilities and discharges with unspecified destinations.

**Excludes discharges of youth who were in JD status at any time during their foster care spell.

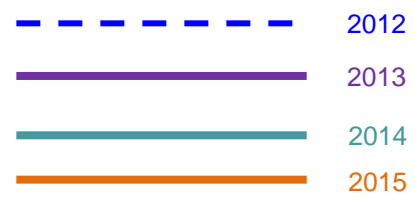
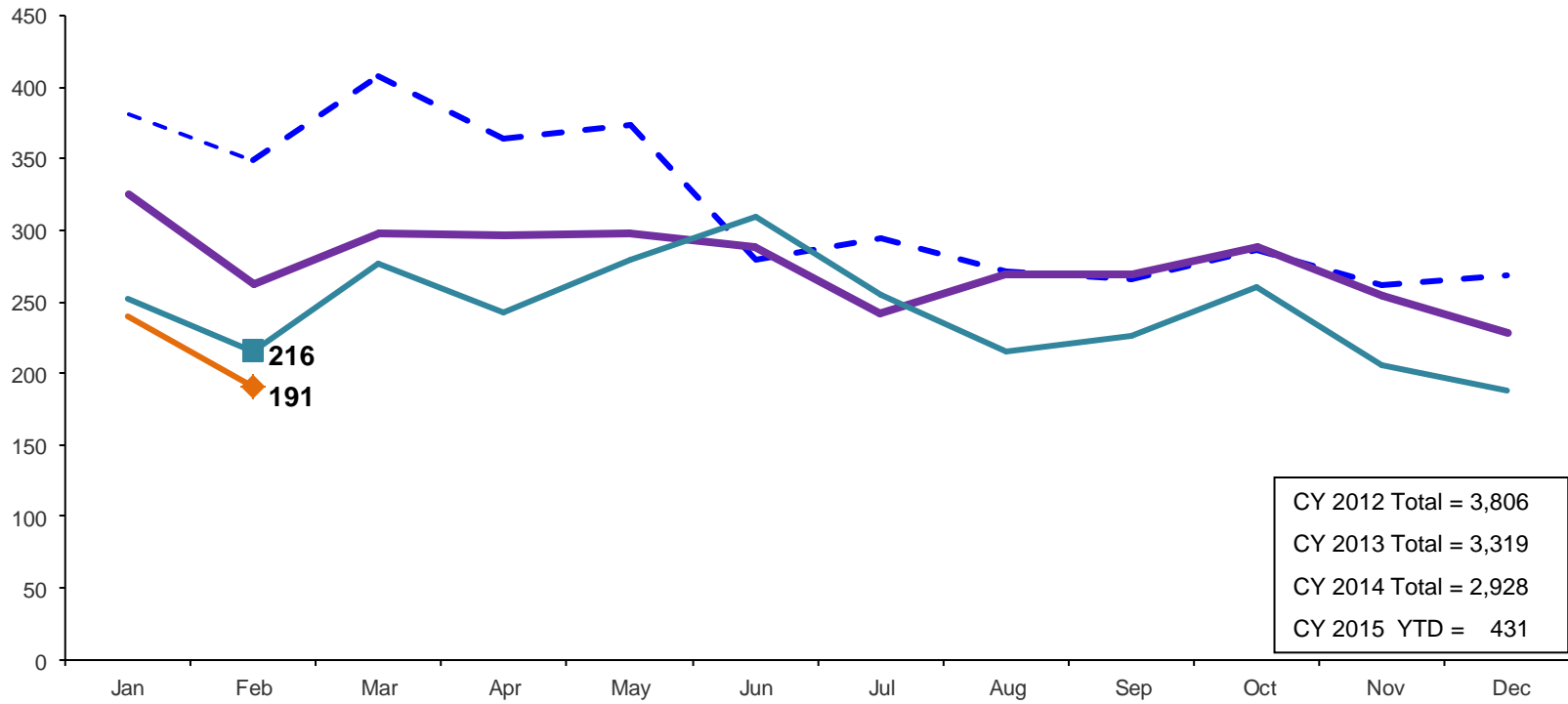
Residential Care Capacity and Utilization, January 2014 – January 2015



	Jan 2014	Feb 2014	Mar 2014	Apr 2014	May 2014	Jun 2014	Jul 2014	Aug 2014	Sep 2014	Oct 2014	Nov 2014	Dec 2014	Jan 2015
Capacity	1,084	1,091	1,091	1,091	1,091	1,091	1,084	1,084	1,084	1,084	1,055	1,055	1,061

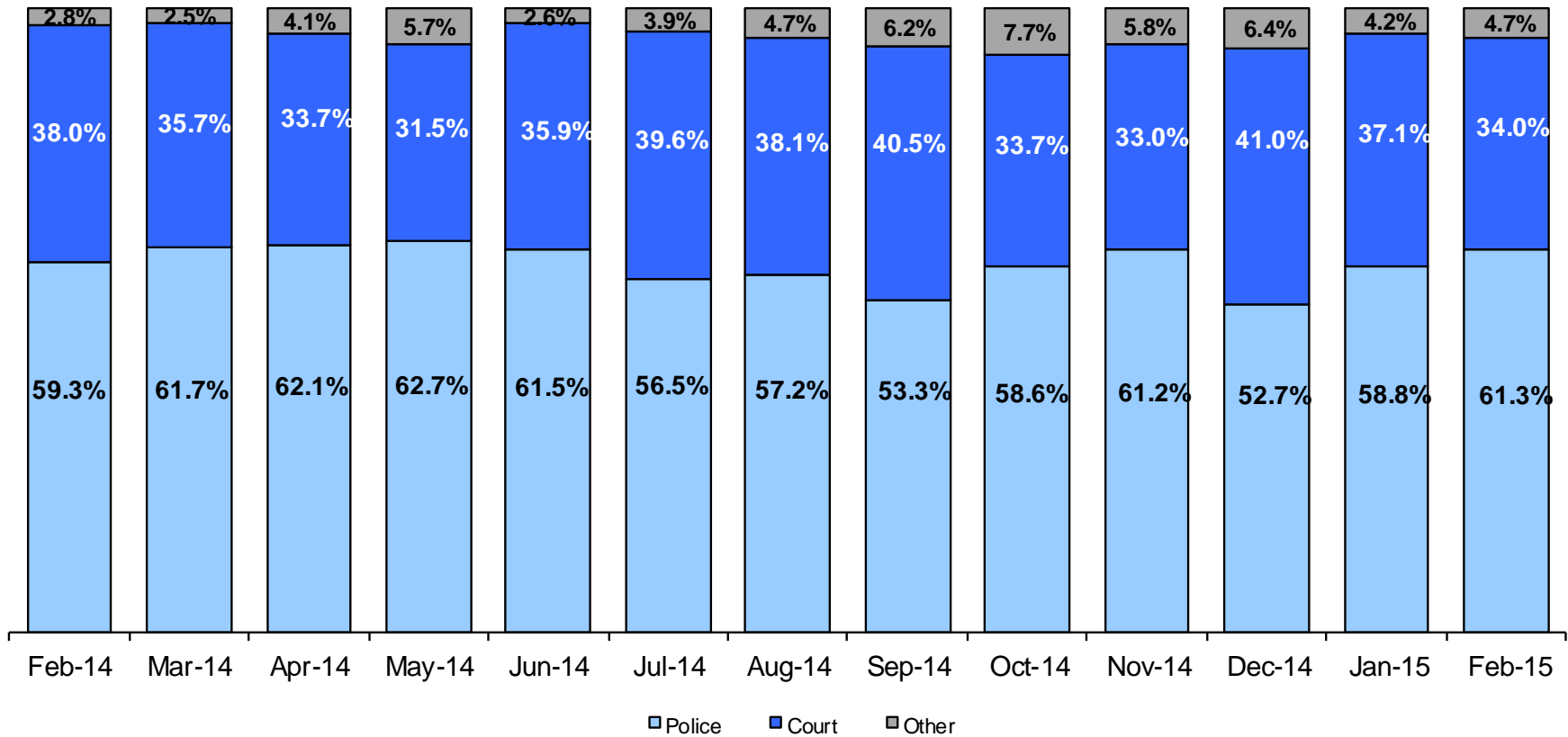
Total Monthly Admissions to Detention

February 2012 – February 2015 (Monthly Total)



Admit Authority on Admissions

February 2014 - February 2015 (Monthly Total)



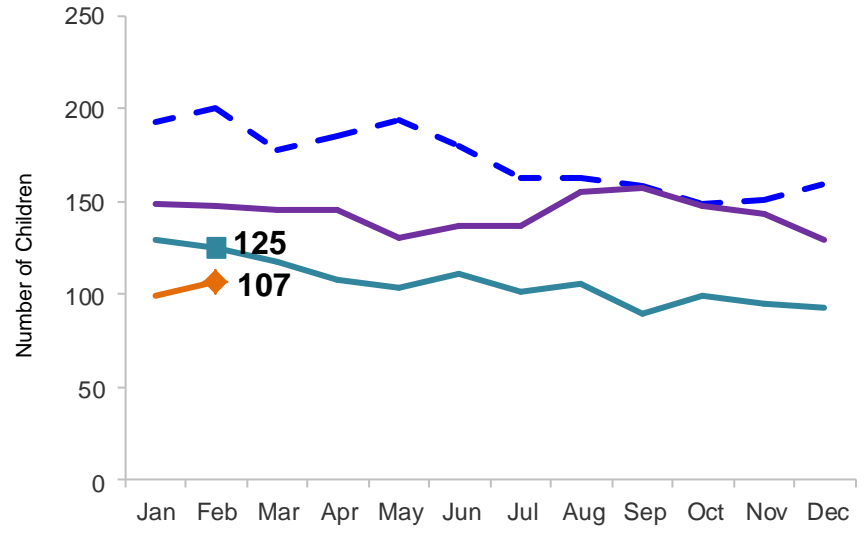
	Feb 2014	Mar 2014	Apr 2014	May 2014	Jun 2014	Jul 2014	Aug 2014	Sep 2014	Oct 2014	Nov 2014	Dec 2014	Jan 2015	Feb 2015
Number of Admissions	216	277	243	279	309	255	215	227	261	206	188	240	191

Note: Other Admit Authority includes the Sheriff Department, Department of Corrections and ACS.

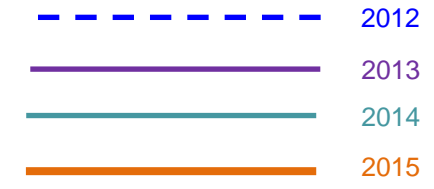
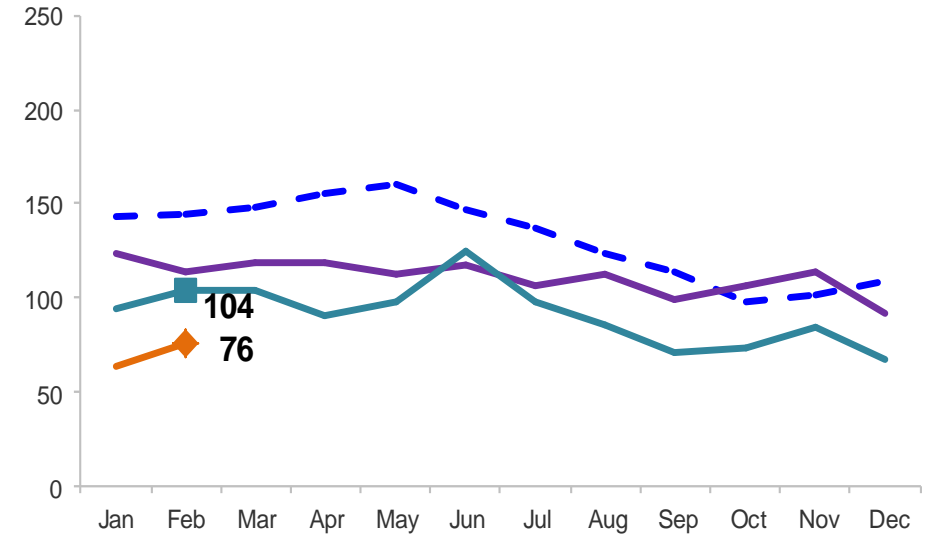
Monthly Average Daily Population

January 2012 – February 2015

Secure Detention

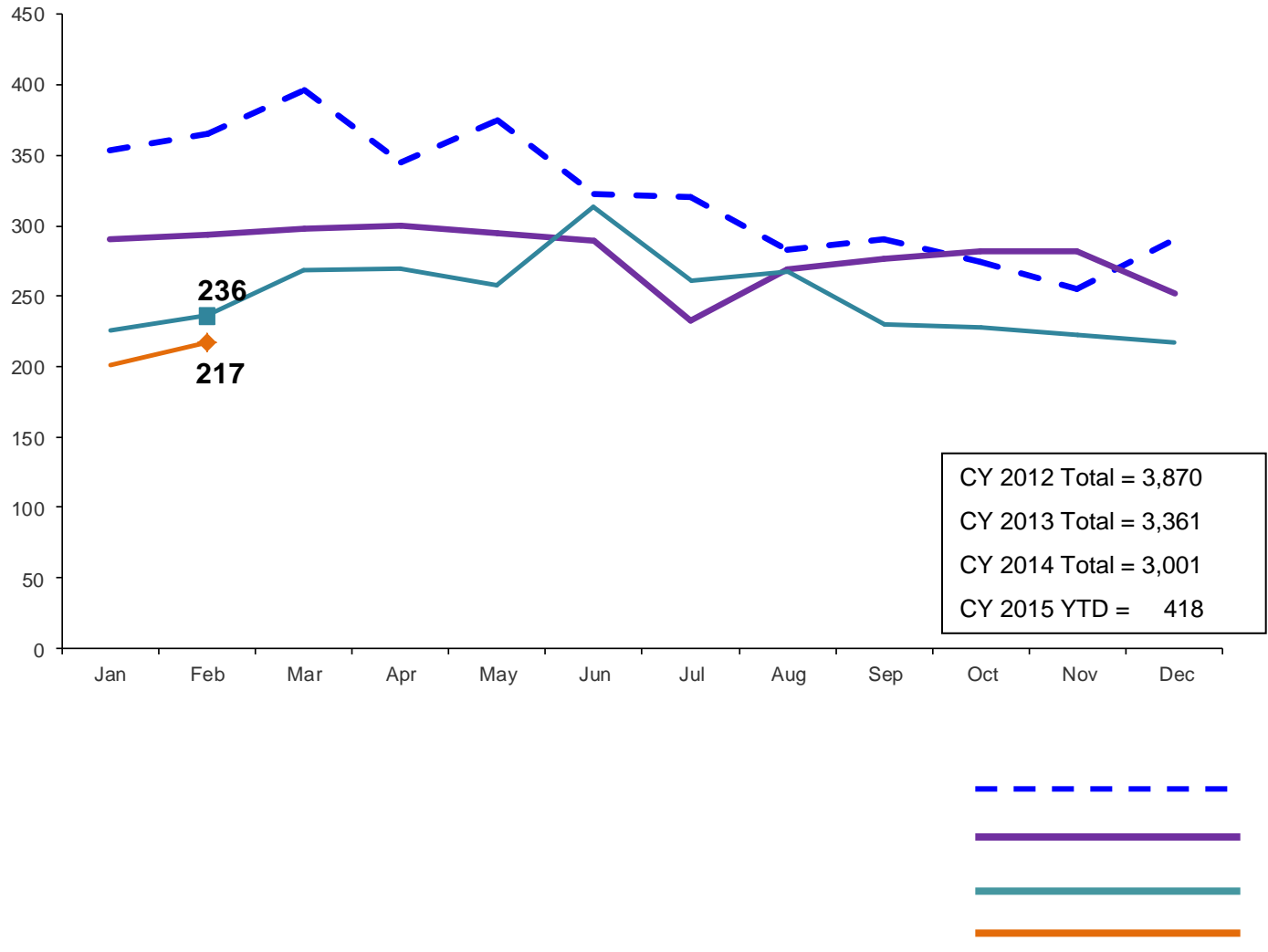


Non-Secure Detention



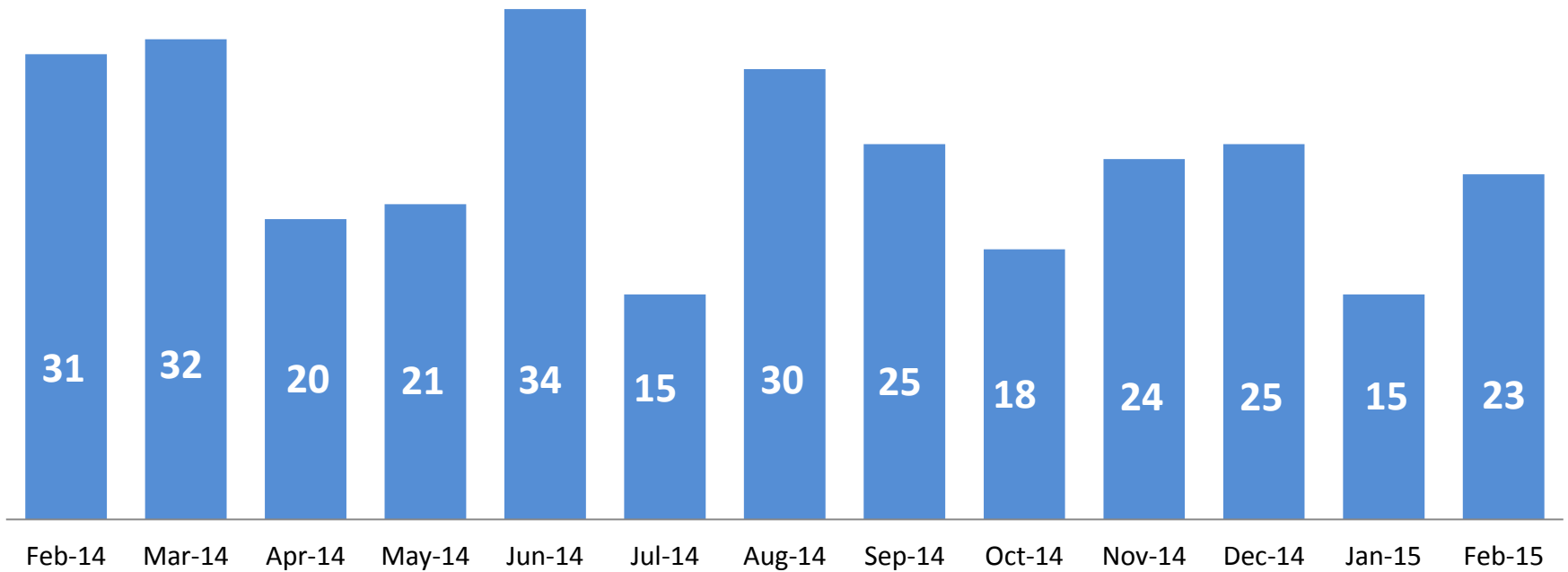
Total Monthly Releases from Detention

January 2012 – February 2015 (Monthly Total)



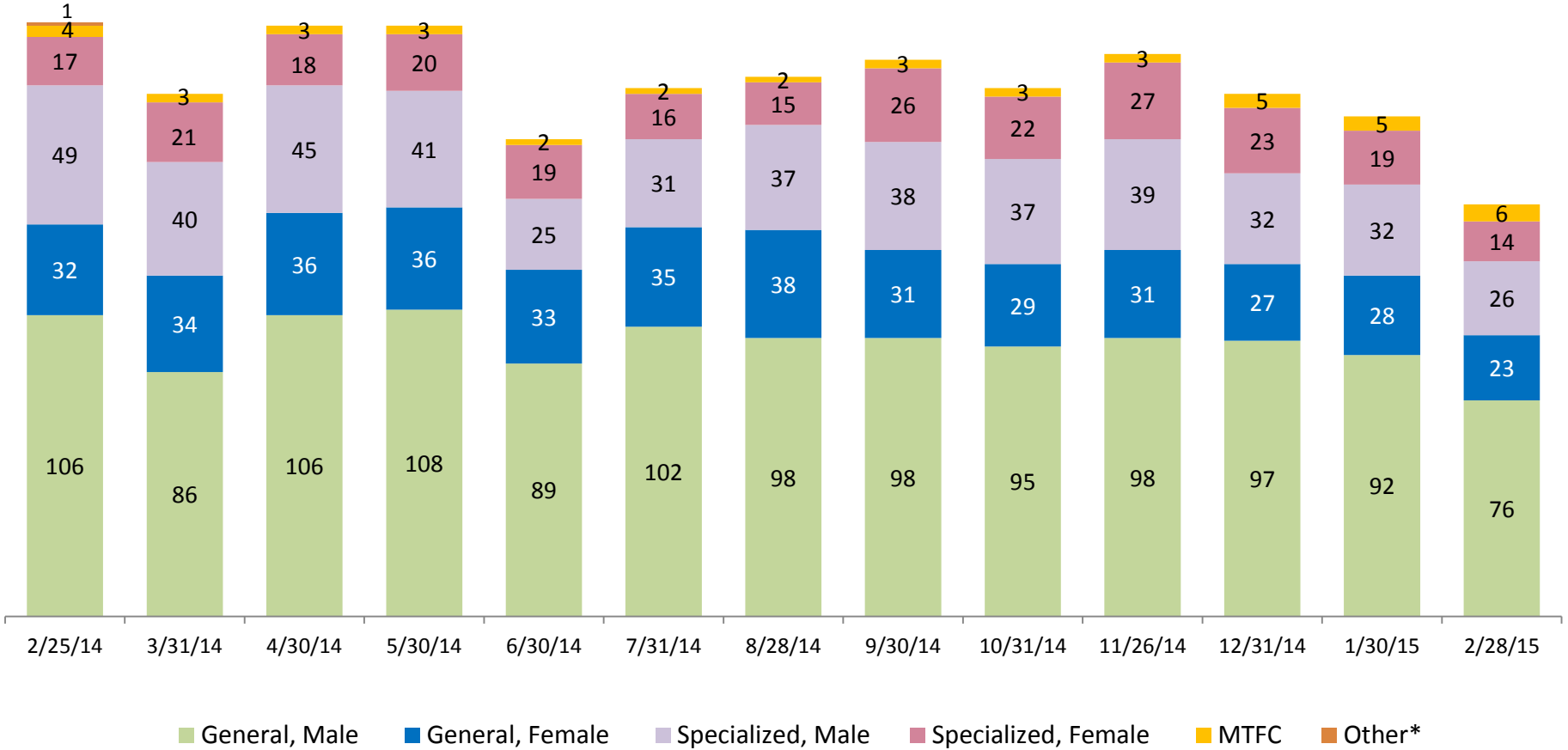
ACS NSP Intakes

February 2014 – February 2015



ACS Non-Secure Placement, in 24 hour Care

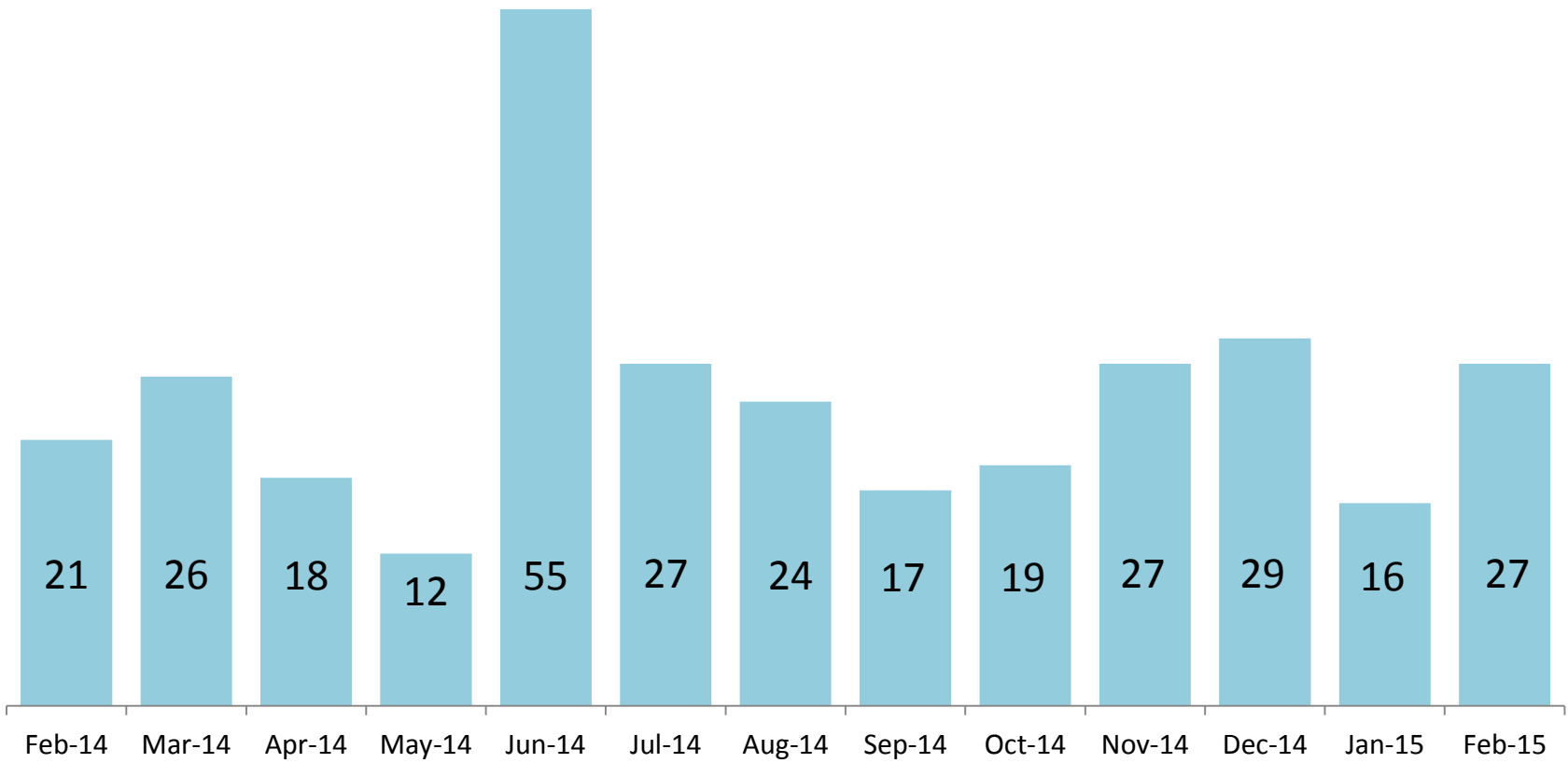
February 2014 – February 2015 (Point-in-Time)



	2/25/14	3/31/14	4/30/14	5/30/14	6/30/14	7/31/14	8/28/14	9/30/14	10/31/14	11/26/14	12/31/14	1/30/15	2/28/15
Number in Placement	214	184	208	208	168	186	190	196	186	198	184	176	145

*Other includes NYC youth in voluntary placements with Lincoln Hall, MercyFirst and Graham Windham.

Releases from NSP to Aftercare February 2014 – February 2015



Appendix

Figure 1: SCR Intakes by Borough, DEC 13 – FEB 14 and DEC 14 – FEB 15

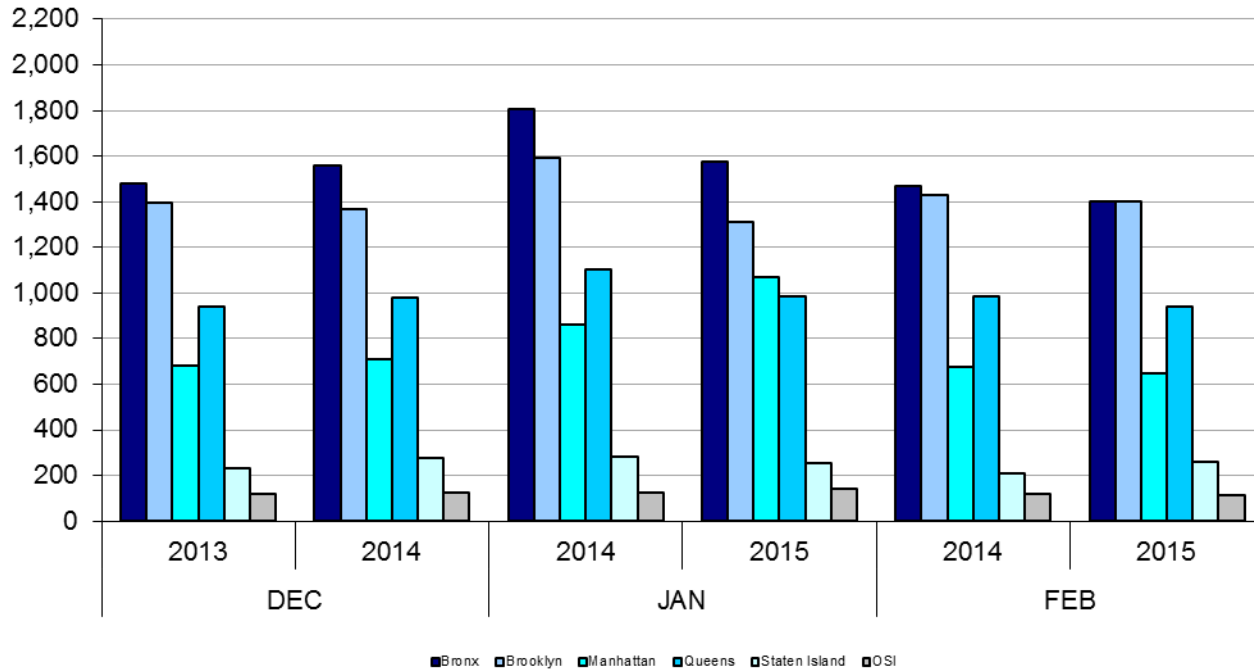


TABLE 1 - SCR Intake Changes by Borough, DEC 13 – FEB 14 and DEC 14 – FEB 15

Month	Year	Bronx	Brooklyn	Manhattan	Queens	Staten Island	OSI	Other	Total
DEC	2013	1,481	1,395	684	940	229	121	135	4,985
	2014	1,559	1,370	711	980	277	125	126	5,148
	% Change	5.3%	-1.8%	3.9%	4.3%	21.0%	3.3%	-6.7%	3.3%
JAN	2014	1,806	1,594	861	1,103	281	124	154	5,923
	2015	1,577	1,313	1,071	986	253	143	127	5,470
	% Change	-12.7%	-17.6%	24.4%	-10.6%	-10.0%	15.3%	-17.5%	-7.6%
FEB	2014	1,470	1,432	676	985	210	120	125	5,018
	2015	1,403	1,399	646	939	257	112	123	4,879
	% Change	-4.6%	-2.3%	-4.4%	-4.7%	22.4%	-6.7%	-1.6%	-2.8%
Total	2013/2014	4,757	4,421	2,221	3,028	720	365	414	15,926
	2014/2015	4,539	4,082	2,428	2,905	787	380	376	15,497
	% Change	-4.6%	-7.7%	9.3%	-4.1%	9.3%	4.1%	-9.2%	-2.7%

Figure 2: Citywide SCR Intakes by Reporter Group, DEC 13 – FEB 14 and DEC 14 – FEB 15

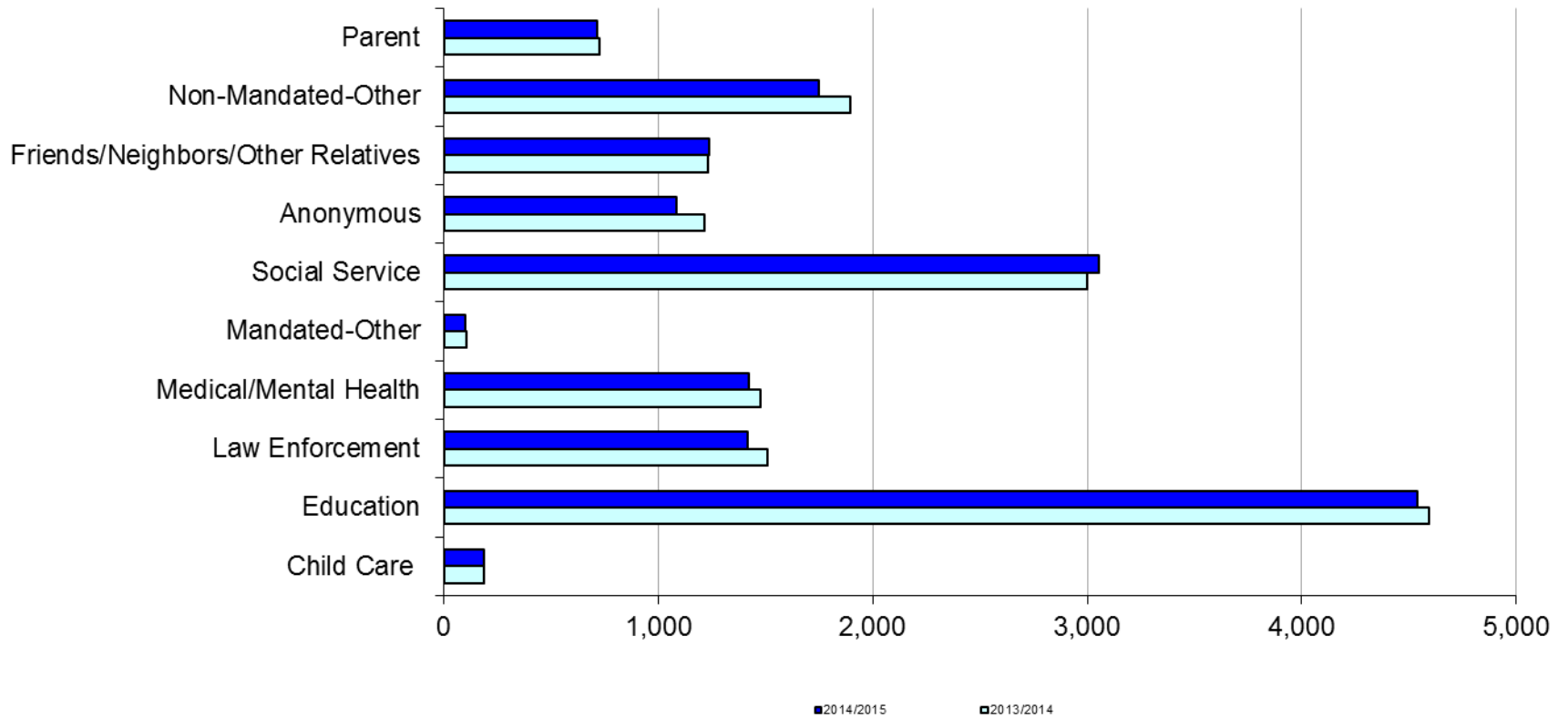
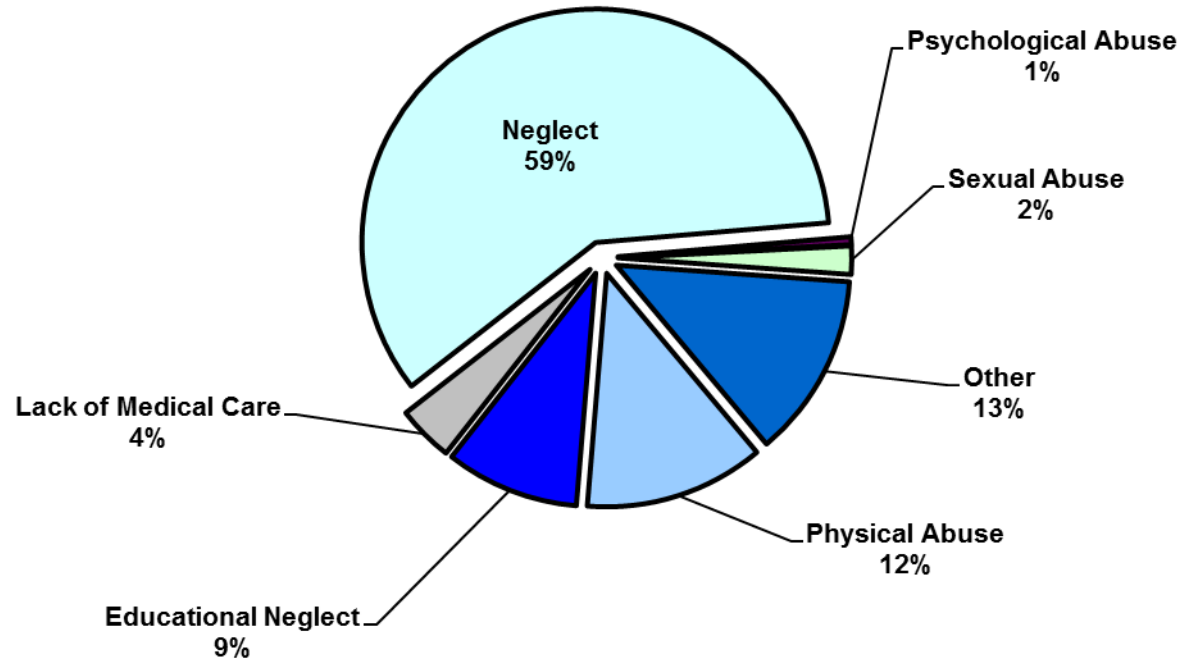


TABLE 2 - SCR Intakes by Reporter Group, DEC 13 – FEB 14 and DEC 14 – FEB 15

Year	Child Care/ Substitute Care Personnel	Educational Personnel	Law Enforcement	Medical/ Mental Health Personnel	Mandated- Other	Social Service Personnel	Anonymous	Friends/ Neighbors/ Other Relatives	Non- Mandated- Other	Parent	Foster Parent	Total
Bronx												
2013/2014	51	1,440	431	420	26	931	318	357	587	192	0	4,753
2014/2015	45	1,402	318	402	25	938	317	339	544	208	1	4,539
% Change	-11.8%	-2.6%	-26.2%	-4.3%	-3.8%	0.8%	-0.3%	-5.0%	-7.3%	8.3%	--	-4.5%
Brooklyn												
2013/2014	52	1,337	372	372	30	795	384	374	533	174	0	4,423
2014/2015	48	1,274	372	359	29	724	307	339	458	172	0	4,082
% Change	-7.7%	-4.7%	0.0%	-3.5%	-3.3%	-8.9%	-20.1%	-9.4%	-14.1%	-1.1%	--	-7.7%
Manhattan												
2013/2014	29	471	265	252	12	450	169	174	292	107	0	2,221
2014/2015	24	539	299	256	17	498	183	222	284	104	0	2,426
% Change	-17.2%	14.4%	12.8%	1.6%	41.7%	10.7%	8.3%	27.6%	-2.7%	-2.8%	--	9.2%
Queens												
2013/2014	22	1,027	279	274	26	522	221	220	307	129	1	3,028
2014/2015	31	966	274	260	14	582	160	224	292	103	0	2,906
% Change	40.9%	-5.9%	-1.8%	-5.1%	-46.2%	11.5%	-27.6%	1.8%	-4.9%	-20.2%	--	-4.0%
Staten Island												
2013/2014	3	245	65	72	3	104	73	63	57	35	0	720
2014/2015	11	279	55	65	6	108	79	79	53	51	0	786
% Change	266.7%	13.9%	-15.4%	-9.7%	100.0%	3.8%	8.2%	25.4%	-7.0%	45.7%	--	9.2%
OSI												
2013/2014	20	40	17	29	6	82	25	16	78	50	2	365
2014/2015	17	47	20	39	6	71	31	11	88	51	0	381
% Change	-15.0%	17.5%	17.6%	34.5%	0.0%	-13.4%	24.0%	-31.3%	12.8%	2.0%	--	4.4%
Other												
2013/2014	8	36	79	57	4	118	23	29	43	41	0	438
2014/2015	9	35	79	42	2	132	9	24	28	24	2	386
% Change	12.5%	-2.8%	0.0%	-26.3%	-50.0%	11.9%	-60.9%	-17.2%	-34.9%	-41.5%	--	-11.9%
Citywide												
2013/2014	185	4,596	1,508	1,476	107	3,002	1,213	1,233	1,897	728	3	15,948
2014/2015	185	4,542	1,417	1,423	99	3,053	1,086	1,238	1,747	713	3	15,506
% Change	0.0%	-1.2%	-6.0%	-3.6%	-7.5%	1.7%	-10.5%	0.4%	-7.9%	-2.1%	0.0%	-2.8%

Figure 3: SCR Allegations, DEC 14 – FEB 15



Total Allegations = 39,149

TABLE 3 - SCR Allegations, DEC 13 - FEB 14 and DEC 14 - FEB 15

Year	Physical Abuse	Educational Neglect	Lack of Medical Care	Neglect	Psychological Abuse	Sexual Abuse	Other	Total
Bronx								
2013/2014	1,241	1,498	535	7,052	59	193	1,593	12,171
2014/2015	1,347	1,334	475	7,215	69	255	1,485	12,180
% Change	8.5%	-10.9%	-11.2%	2.3%	16.9%	32.1%	-6.8%	0.1%
Brooklyn								
2013/2014	1,354	1,218	439	6,778	72	214	1,407	11,482
2014/2015	1,318	1,056	402	6,358	53	211	1,381	10,779
% Change	-2.7%	-13.3%	-8.4%	-6.2%	-26.4%	-1.4%	-1.8%	-6.1%
Manhattan								
2013/2014	528	408	188	2734	17	80	595	4,550
2014/2015	576	424	188	2707	21	67	547	4,530
% Change	9.1%	3.9%	0.0%	-1.0%	23.5%	-16.3%	-8.1%	-0.4%
Queens								
2013/2014	1,008	518	283	4,245	40	116	915	7,125
2014/2015	1,025	511	298	4,167	50	134	931	7,116
% Change	1.7%	-1.4%	5.3%	-1.8%	25.0%	15.5%	1.7%	-0.1%
Staten Island								
2013/2014	172	207	60	1,132	14	35	310	1,930
2014/2015	250	198	68	1,224	9	35	347	2,131
% Change	45.3%	-4.3%	13.3%	8.1%	-35.7%	0.0%	11.9%	10.4%
OSI								
2013/2014	255	43	68	948	1	30	124	1,469
2014/2015	258	56	51	1,009	4	39	152	1,569
% Change	1.2%	30.2%	-25.0%	6.4%	300.0%	30.0%	22.6%	6.8%
Other								
2013/2014	87	51	54	625	9	34	192	1,052
2014/2015	93	44	39	490	4	24	150	844
% Change	6.9%	-13.7%	-27.8%	-21.6%	-55.6%	-29.4%	-21.9%	-19.8%
Citywide								
2013/2014	4,645	3,943	1,627	23,514	212	702	5,136	39,779
2014/2015	4,867	3,623	1,521	23,170	210	765	4,993	39,149
% Change	4.8%	-8.1%	-6.5%	-1.5%	-0.9%	9.0%	-2.8%	-1.6%

**TABLE 4 - Purchased Preventive Cases
Opened and Closed
January 2012 to February 2015**

Month	Opened Cases	Closed Cases
2012		
Jan-12	870	629
Feb-12	889	835
Mar-12	944	991
Apr-12	997	870
May-12	1,117	979
Jun-12	965	869
Jul-12	853	979
Aug-12	917	1,007
Sep-12	727	900
Oct-12	875	915
Nov-12	738	702
Dec-12	938	871
2013		
Jan-13	960	884
Feb-13	873	916
Mar-13	962	1,171
Apr-13	940	988
May-13	864	1,337
Jun-13	863	780
Jul-13	868	1,004
Aug-13	802	1,084
Sep-13	844	724
Oct-13	933	765
Nov-13	901	685
Dec-13	1,106	552
2014		
Jan-14	983	640
Feb-14	987	679
Mar-14	1,146	874
Apr-14	1,074	896
May-14	1,042	888
Jun-14	976	762
Jul-14	1,050	1,077
Aug-14	944	943
Sep-14	987	705
Oct-14	1,050	819
Nov-14	818	638
Dec-14	1,268	721
2015		
Jan-15	814	716
Feb-15	1,026	881

**Table 5 - Referrals to Purchased Preventive Services by Source
January 2012 to February 2015**

Month	Total Referrals	Division of Child Protection	Foster Care Agencies	PPRS Transfer	School	Self	Other Sources*
2012							
Jan-12	1,431	66.5%	0.7%	8.5%	3.6%	3.8%	17.0%
Feb-12	1,043	78.2%	1.1%	9.0%	1.9%	6.7%	3.1%
Mar-12	1,525	73.6%	0.9%	6.0%	1.8%	3.9%	13.8%
Apr-12	1,370	72.8%	1.0%	9.4%	1.2%	4.2%	11.4%
May-12	1,463	70.9%	1.0%	7.6%	1.1%	4.4%	15.0%
Jun-12	1,279	73.8%	0.5%	5.9%	1.0%	4.7%	14.2%
Jul-12	1,308	77.4%	1.2%	7.0%	0.3%	3.7%	10.5%
Aug-12	1,391	74.0%	0.9%	11.7%	0.3%	2.9%	10.2%
Sep-12	1,110	70.5%	1.9%	9.6%	1.2%	5.0%	11.9%
Oct-12	1,159	61.1%	1.4%	12.6%	2.7%	4.9%	17.3%
Nov-12	1,106	67.0%	1.0%	9.9%	2.2%	4.7%	15.3%
Dec-12	1,206	68.7%	0.8%	5.8%	2.7%	5.6%	16.4%
CY 2012	15,391	71.3%	1.0%	8.5%	1.6%	4.5%	13.1%
2013							
Jan-13	1,474	74.1%	1.2%	7.3%	1.2%	3.7%	12.5%
Feb-13	1,308	75.8%	1.1%	8.0%	1.6%	2.9%	10.6%
Mar-13	1,270	73.5%	1.2%	6.7%	2.4%	3.9%	12.3%
Apr-13	1,421	77.9%	0.8%	7.4%	0.9%	3.0%	10.1%
May-13	1,320	68.4%	0.5%	10.2%	1.5%	3.8%	15.5%
Jun-13	953	69.2%	1.2%	9.4%	2.6%	5.0%	12.6%
Jul-13	1,014	66.3%	1.9%	14.4%	1.6%	3.9%	11.9%
Aug-13	1,212	70.5%	0.7%	11.8%	0.7%	4.7%	11.6%
Sep-13	1,262	64.0%	2.1%	11.3%	1.7%	6.7%	14.2%
Oct-13	1,319	61.0%	1.1%	9.0%	2.9%	7.5%	18.5%
Nov-13	1,249	55.9%	1.6%	10.5%	4.6%	9.2%	18.3%
Dec-13	1,464	62.2%	1.2%	8.2%	2.3%	9.2%	17.0%
CY 2013	15,266	68.3%	1.2%	9.4%	2.0%	5.3%	13.8%
2014							
Jan-14	1,537	70.0%	1.2%	6.6%	2.3%	5.8%	14.2%
Feb-14	1,334	69.7%	0.8%	8.4%	1.7%	5.5%	13.9%
Mar-14	1,612	70.0%	1.4%	8.6%	1.6%	5.3%	13.1%
Apr-14	1,525	70.2%	0.9%	7.6%	2.1%	3.7%	15.4%
May-14	1,580	74.4%	0.7%	8.3%	1.4%	5.2%	10.0%
Jun-14	1,550	78.6%	1.2%	6.3%	1.2%	3.2%	9.4%
Jul-14	1,659	79.6%	1.5%	6.7%	0.4%	4.2%	7.6%
Aug-14	1,395	72.2%	1.6%	10.8%	0.3%	4.9%	10.3%
Sep-14	1,597	49.4%	1.5%	7.6%	0.3%	4.5%	36.8%
Oct-14	1,634	68.2%	1.9%	10.0%	1.2%	4.6%	14.1%
Nov-14	1,311	66.4%	0.9%	14.3%	2.4%	3.9%	12.1%
Dec-14	1,785	71.1%	1.4%	8.8%	2.9%	4.8%	11.0%
CY 2014	18,519	70.1%	1.3%	8.6%	1.5%	4.6%	14.0%
2015							
Jan-15	1,432	76.5%	1.5%	9.8%	1.4%	3.1%	7.6%
Feb-15	1,589	76.2%	0.8%	8.7%	1.6%	4.5%	8.2%

*Other Community Sources includes the Department of Homeless Services, Family Court, FAP, Hospitals and Medical facilities, the NYC Housing Authority, PINS/DAS, Probation, and Sponsor Agencies.