

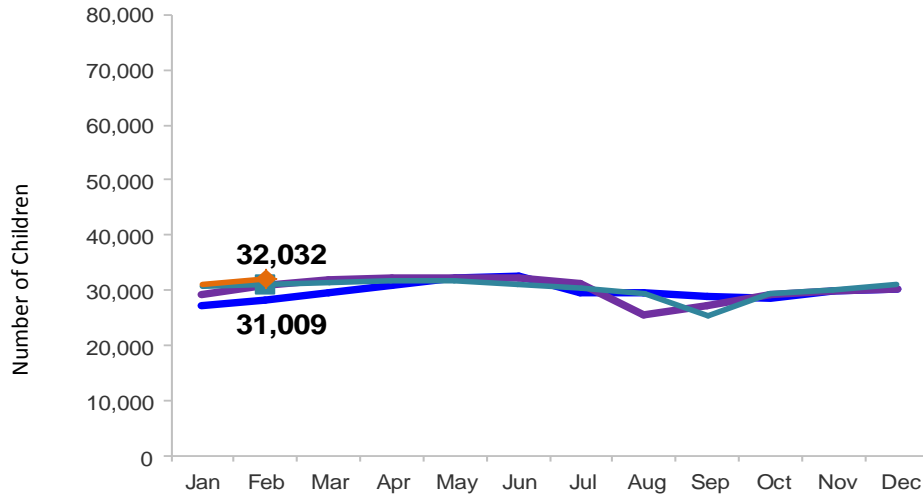


# Flash

March 2016

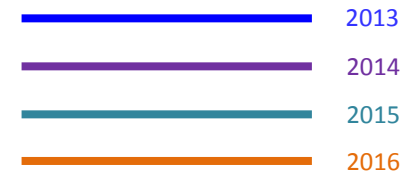
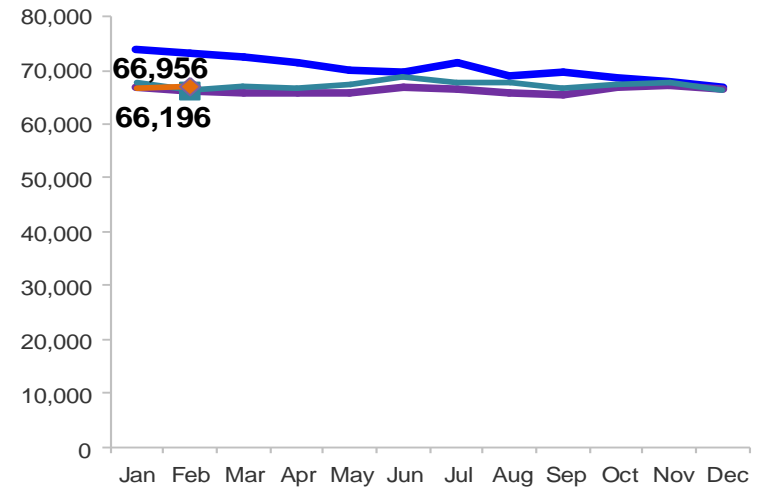
### Children Enrolled in Contracted EarlyLearn Programs

January 2013 – February 2016 (End of Month)



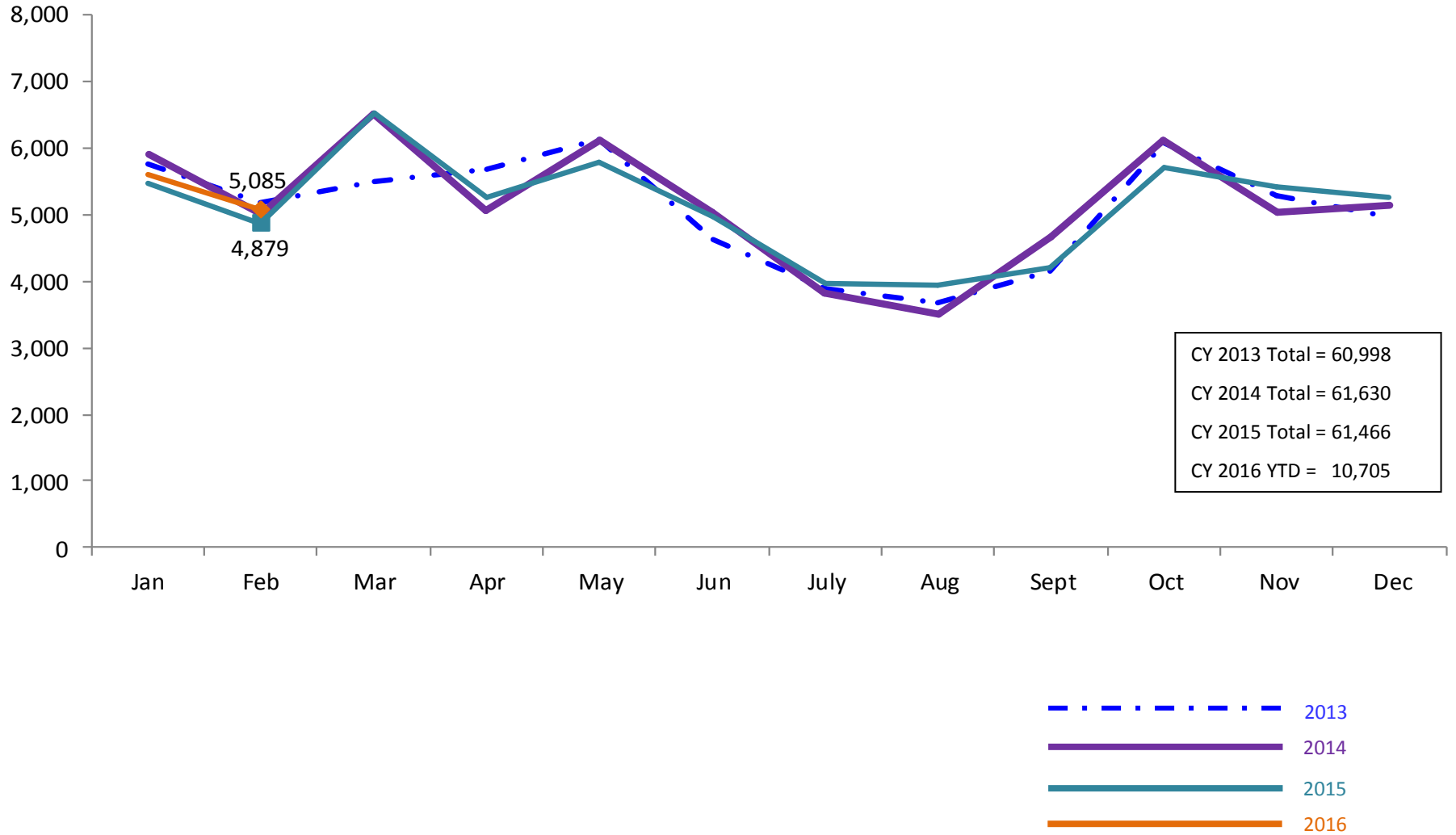
### Children Using Vouchers for Child Care

January 2013 – February 2016 (End of Month)



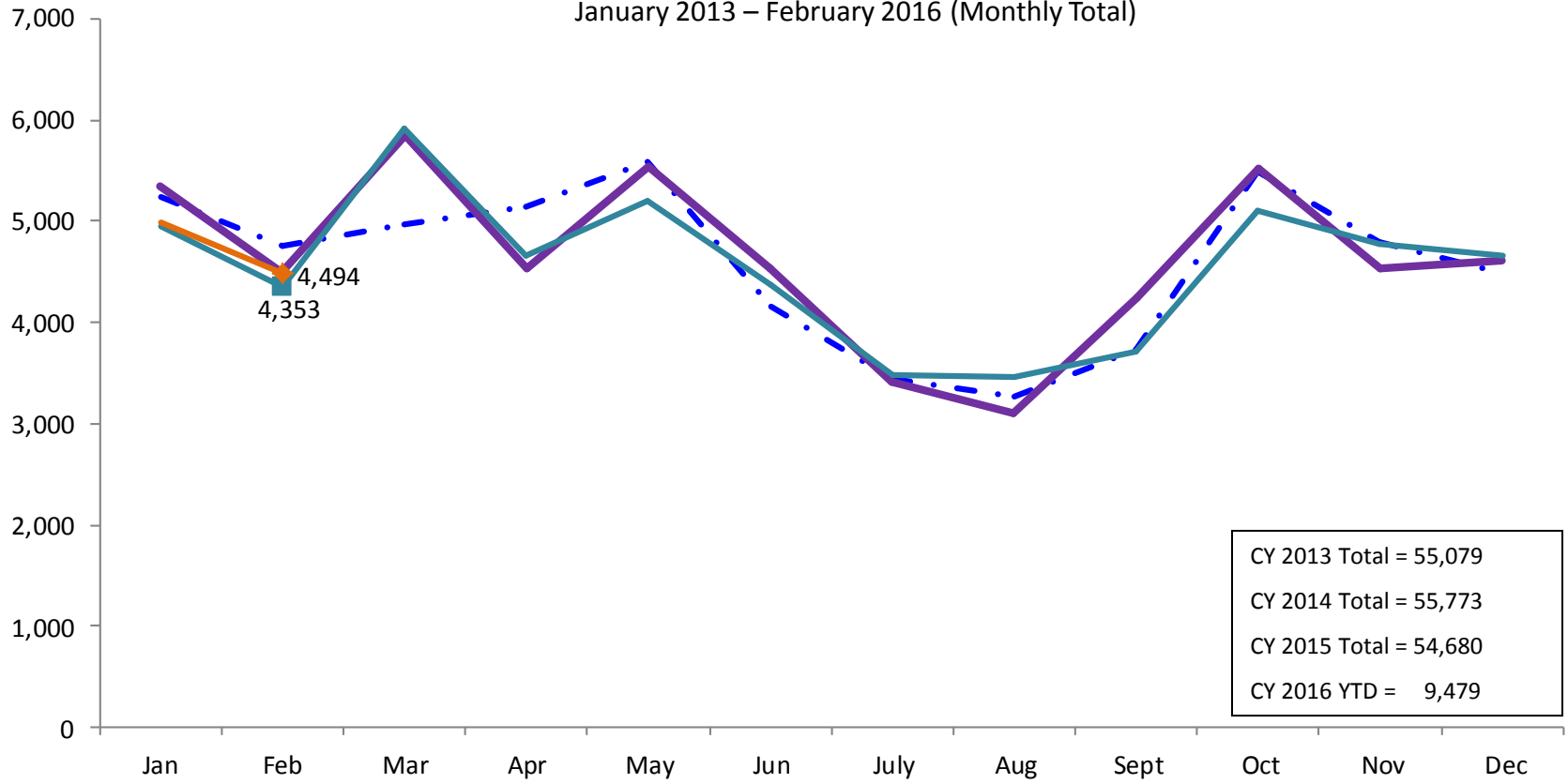
### SCR Intakes

January 2013 – February 2016 (Monthly Total)

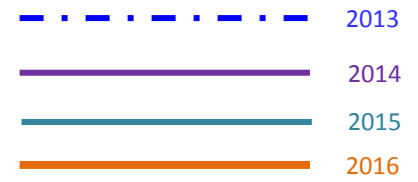


### SCR Consolidated Investigations

January 2013 – February 2016 (Monthly Total)

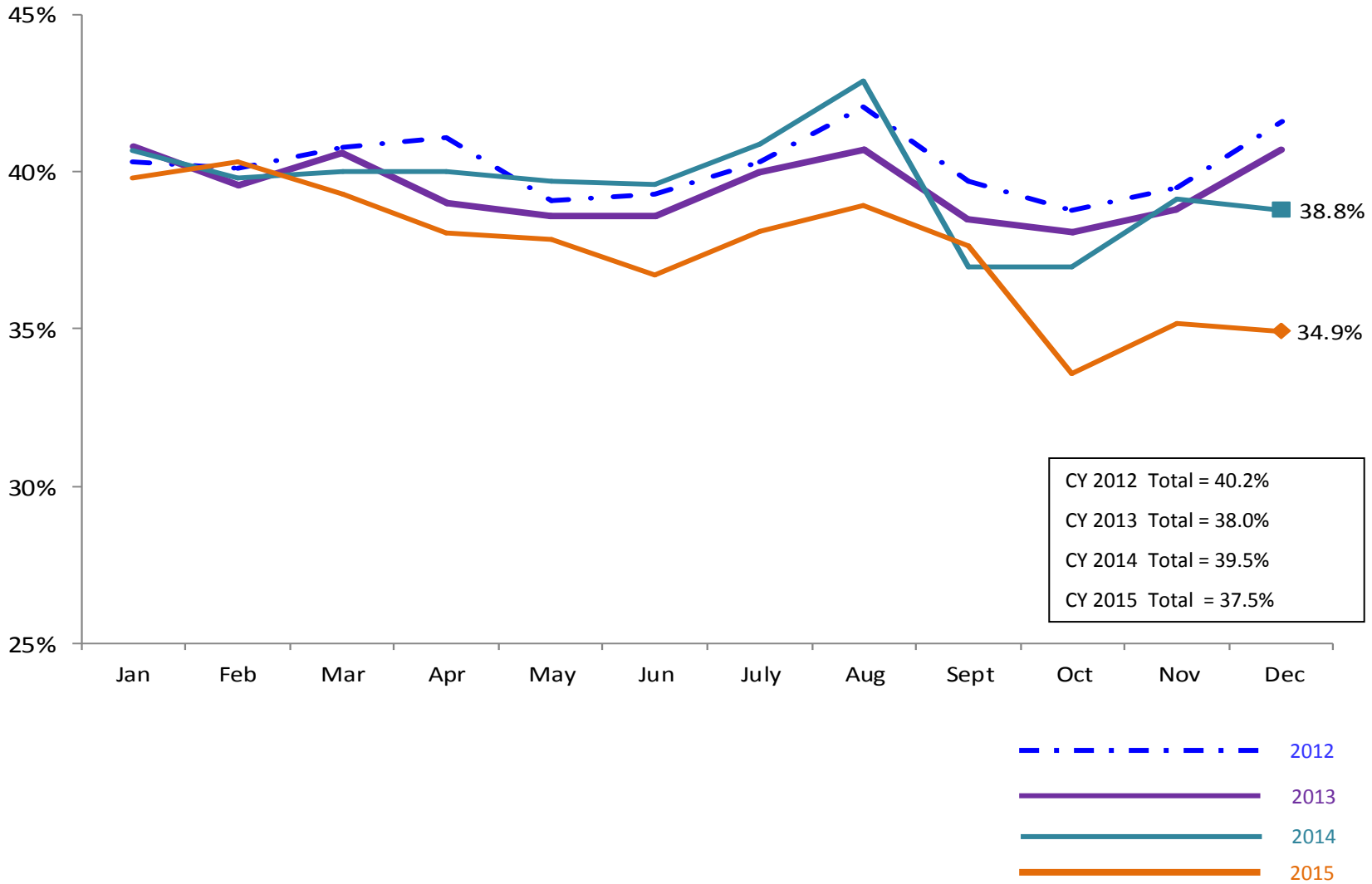


CY 2013 Total = 55,079  
 CY 2014 Total = 55,773  
 CY 2015 Total = 54,680  
 CY 2016 YTD = 9,479



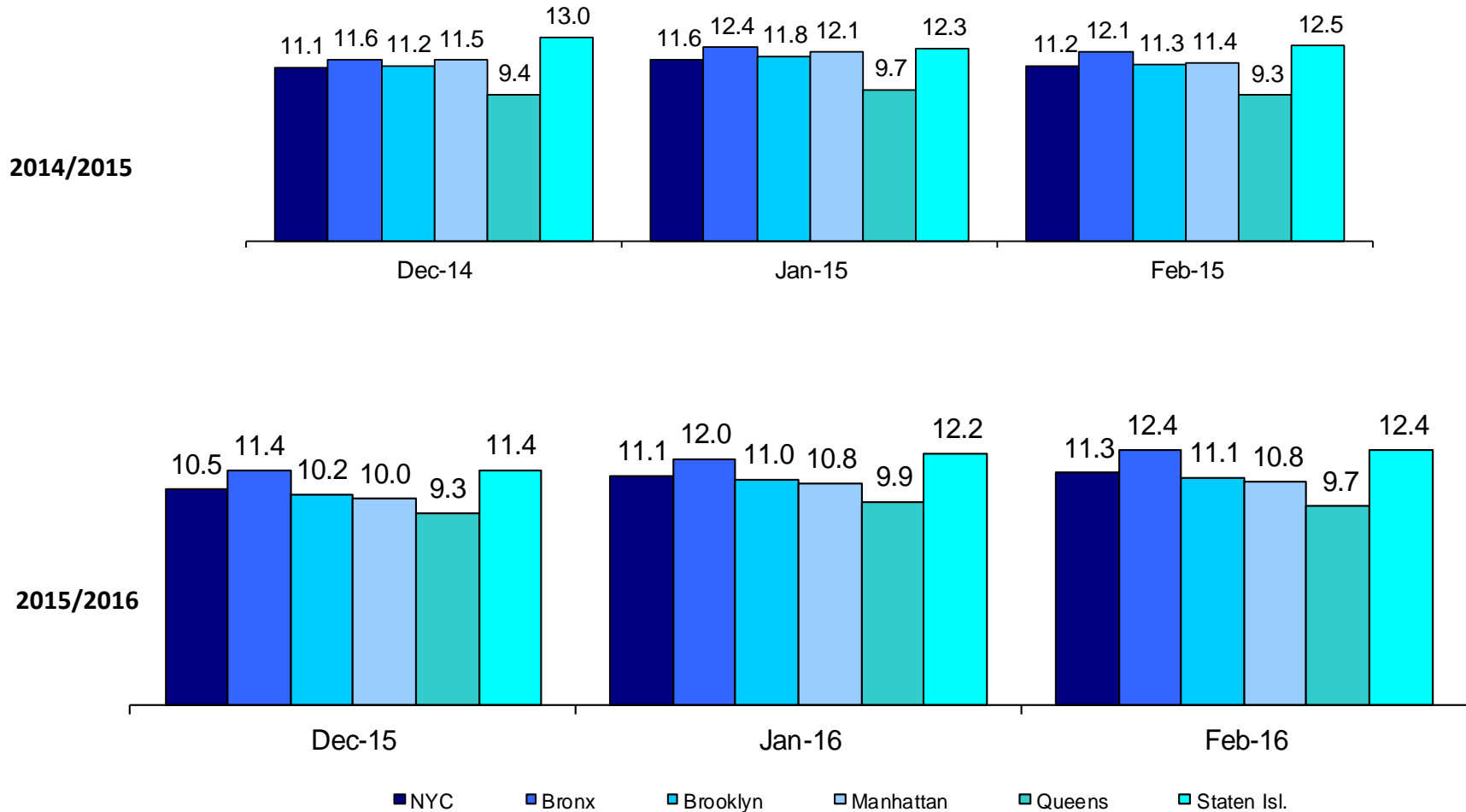
### SCR Investigation Indication Rate

January 2012 – December 2015



### Average P/D Combined Caseload\*

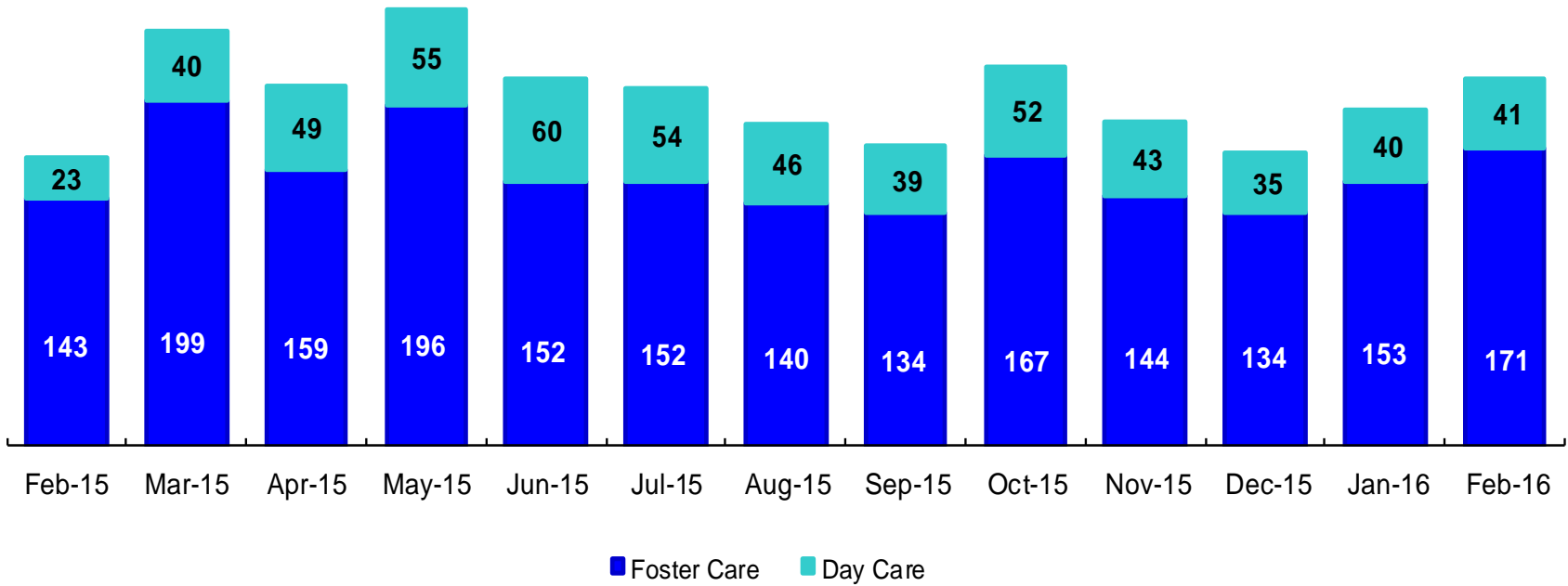
December 2014 – February 2015 & December 2015 – February 2016



\* Caseloads are of protective/diagnostic caseworkers only and exclude the caseloads carried by Level I and Level II Supervisors.

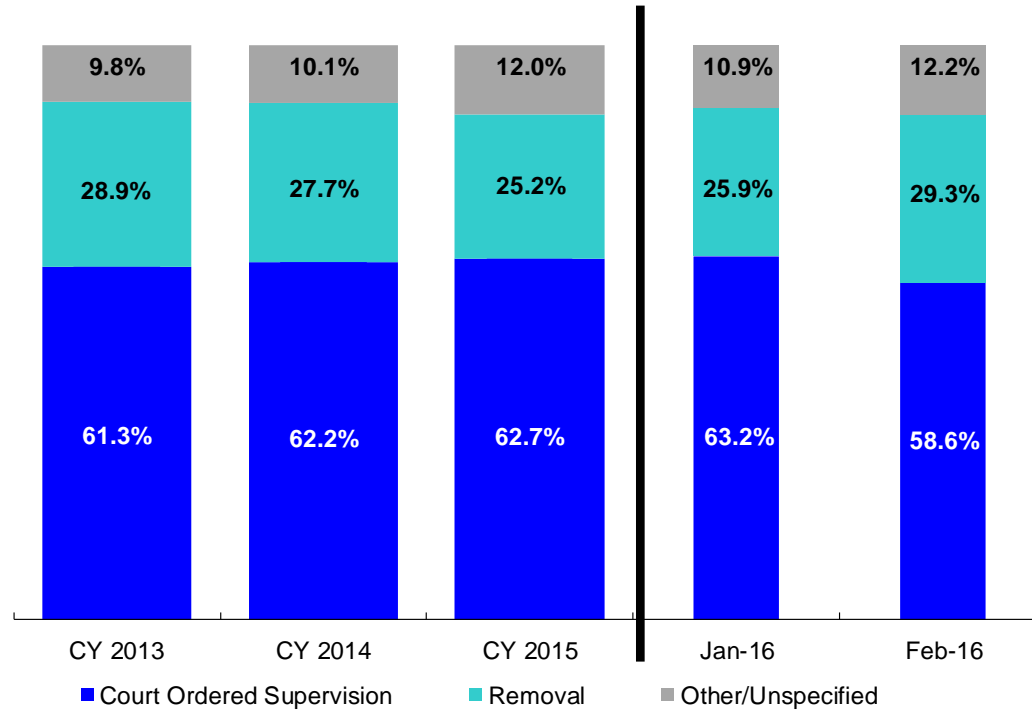
### OSI Investigations by Program

February 2015 – February 2016



	Feb 2015	Mar 2015	Apr 2015	May 2015	Jun 2015	Jul 2015	Aug 2015	Sep 2015	Oct 2015	Nov 2015	Dec 2015	Jan 2016	Feb 2016
Number of Investigations	166	239	208	251	212	206	186	173	219	187	169	193	212

### Article 10 Total Filings & Filing Outcomes, CY 2013 – February 2016

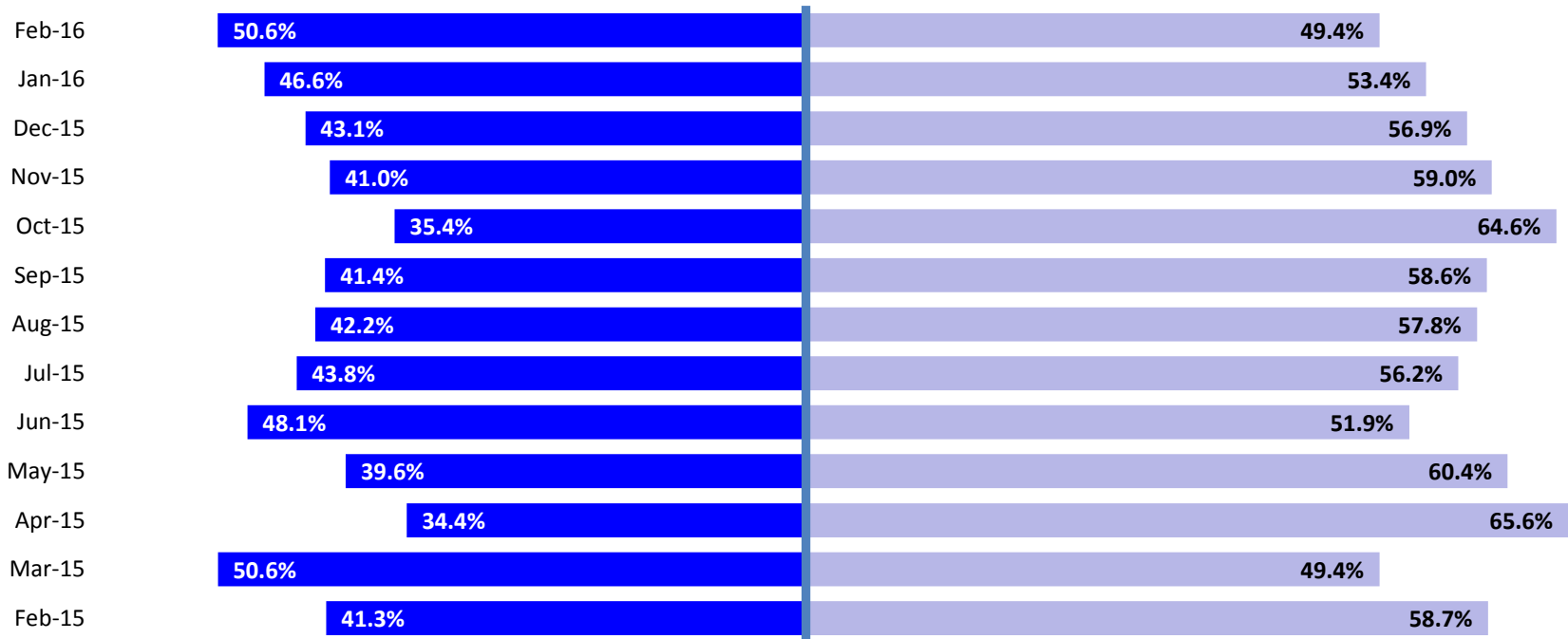


	CY 2013	CY 2014	CY 2015	Jan 2016	Feb 2016
Article10 Filings	9,318	9,900	10,257	737	830

Note: The category "Other/Unspecified" includes released with no supervision, no order issued and no outcome specified. Outcomes of cases heard the next day are not captured in this report



### Article 10 Filing Removals, February 2015 – February 2016

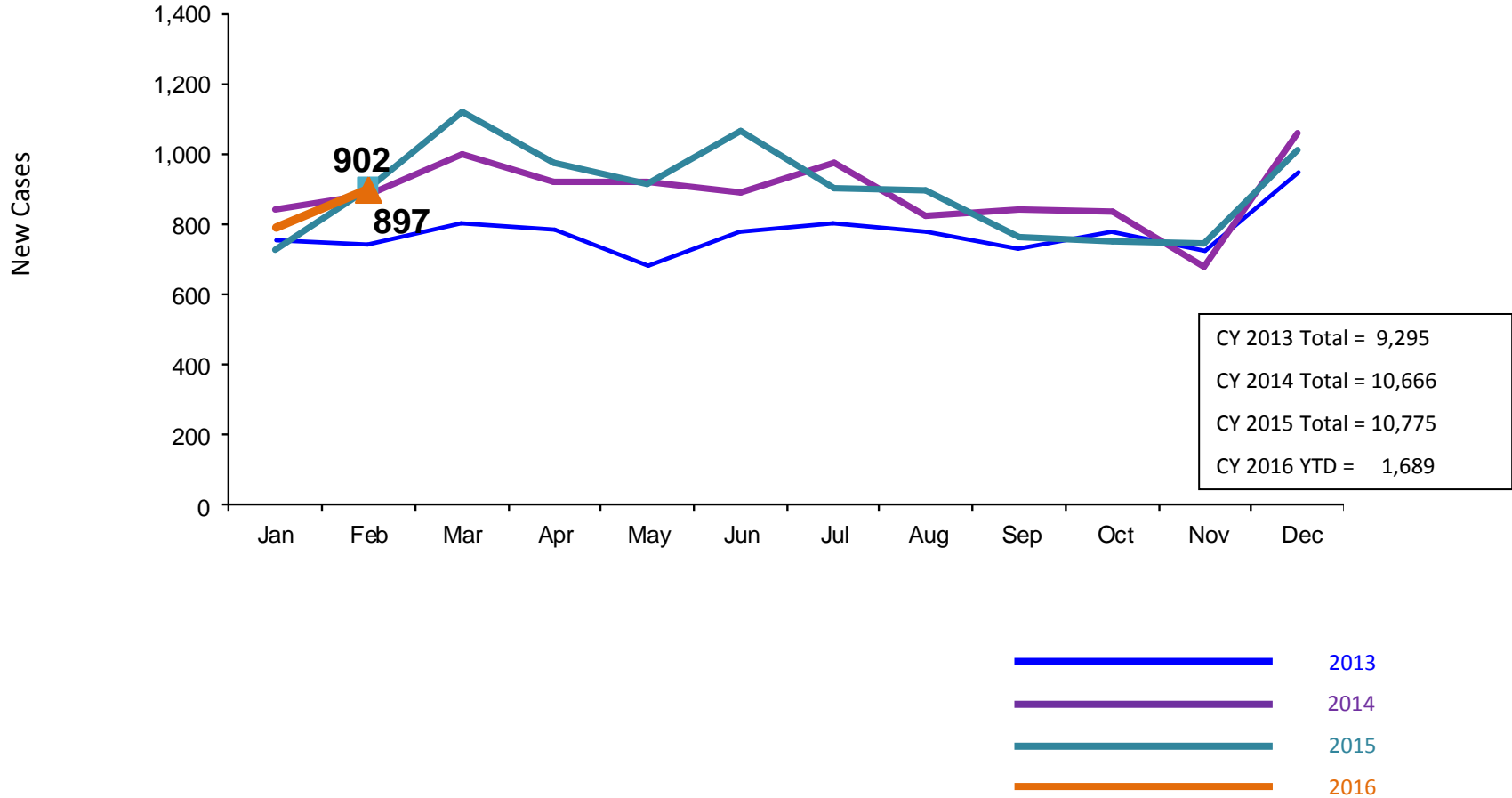


■ Pre-Filing Emergency Removals (court approved at initial hearing)    ■ Post-Filing Removals (court ordered at initial hearing)

	Feb 2015	Mar 2015	Apr 2015	May 2015	Jun 2015	July 2015	Aug 2015	Sep 2015	Oct 2015	Nov 2015	Dec 2015	Jan 2016	Feb 2016
Number of Removals	235	245	262	250	206	235	180	174	178	166	195	191	243

### New Preventive Cases\*

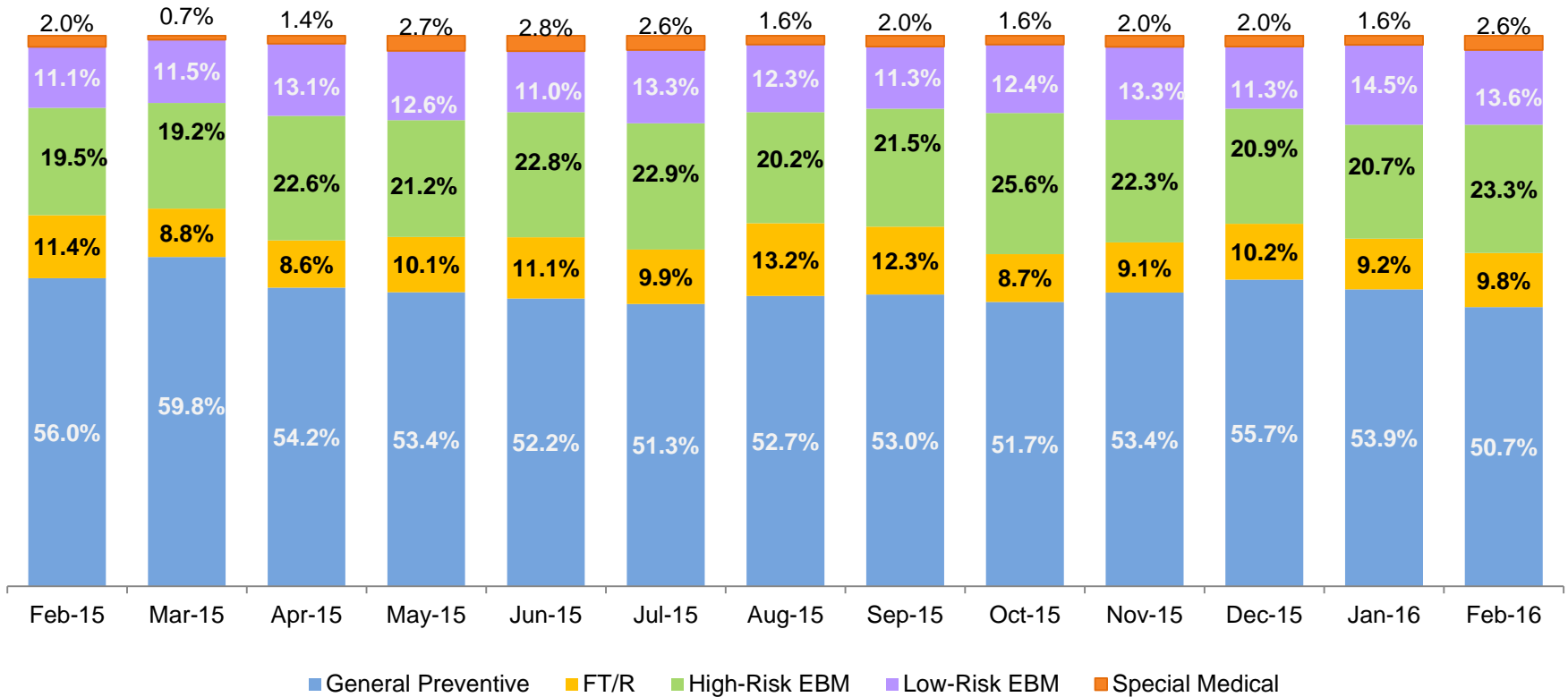
January 2013 – February 2016



\*Notes: 1) New preventive cases include child welfare program cases only. JJI and FAP are not included; 2) New preventive cases do not include cases transferred from one preventive program to another. 3) See Pages 33 and 34 of the Appendix for supporting data.

New Preventive Cases by Program Type \*

February 2015– February 2016

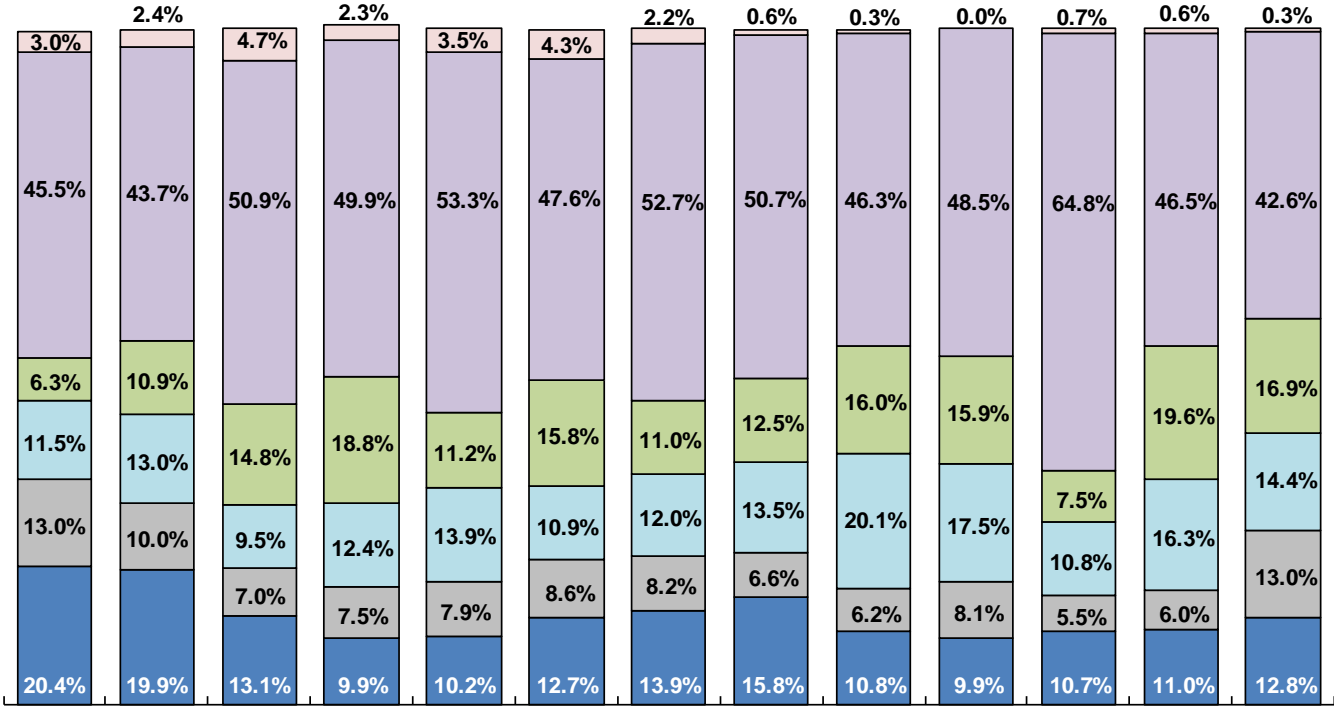


	Feb 2015	Mar 2015	Apr 2015	May 2015	Jun 2015	Jul 2015	Aug 2015	Sep 2015	Oct 2015	Nov 2015	Dec 2015	Jan 2016	Feb 2016
Number of New Preventive Cases	902	1122	977	914	1068	899	893	764	749	746	1013	792	897

\* New preventive cases include child welfare program cases only. Cases transferred from one preventive program to another are not included

### Average Pre-Placement Residential Monthly Population

February 2015 – February 2016



Feb-15 Mar-15 Apr-15 May-15 Jun-15 Jul-15 Aug-15 Sep-15 Oct-15 Nov-15 Dec-15 Jan-16 Feb-16

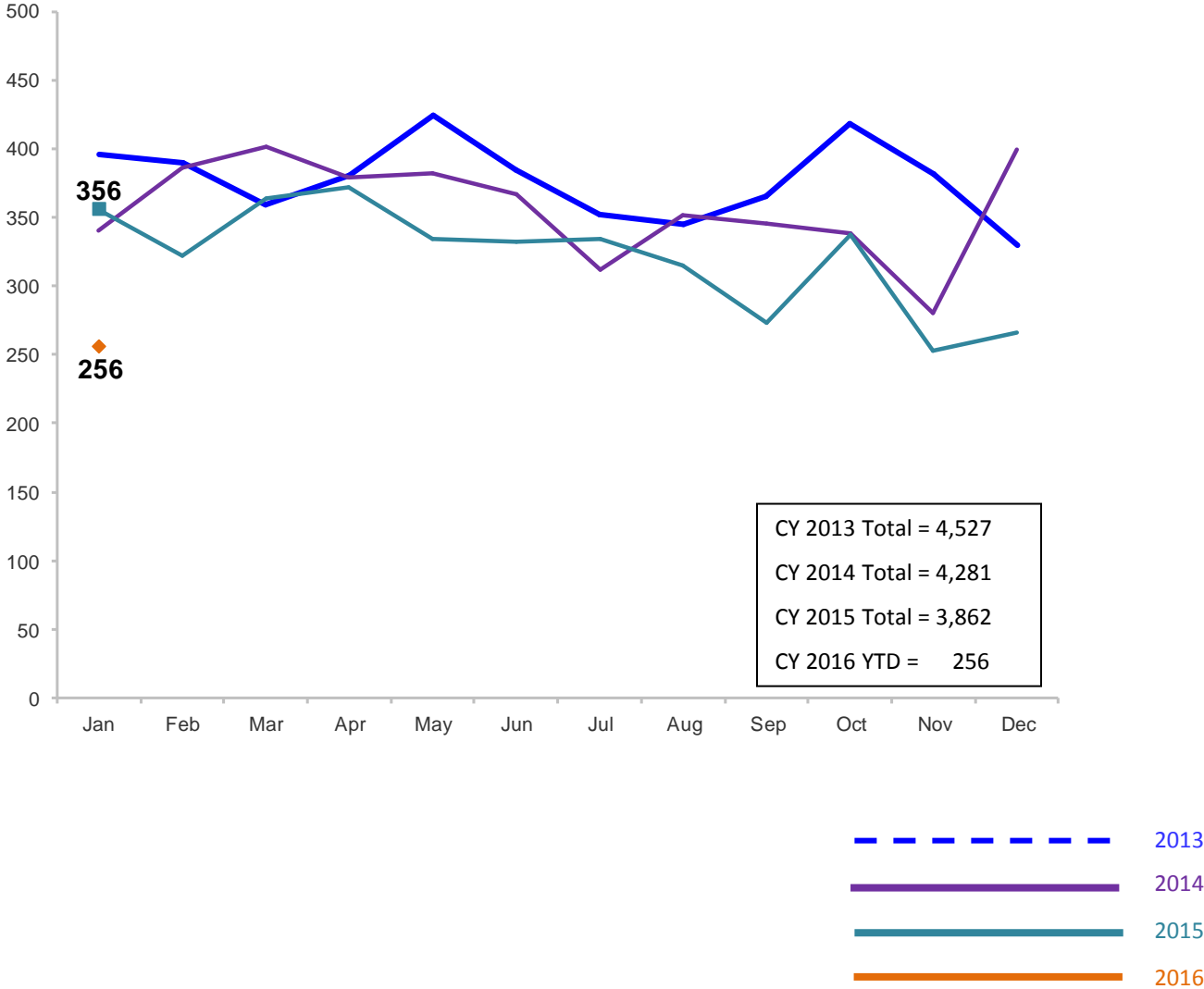
■ Newborn - 3 years old ■ 4-6 years old ■ 7-10 years old ■ 11-13 years old ■ 14-18 years old ■ >=19 yrs

	Feb 2015	Mar 2015	Apr 2015	May 2015	Jun 2015	July 2015	Aug 2015	Sep 2015	Oct 2015	Nov 2015	Dec 2015	Jan 2016	Feb 2016
Average Number of Children	39	50	52	60	50	42	40	36	45	40	40	46	45

\*Beginning in December 2014 the pre-placement residential population includes children at the Children’s Center and at the MercyFirst Reception Center.

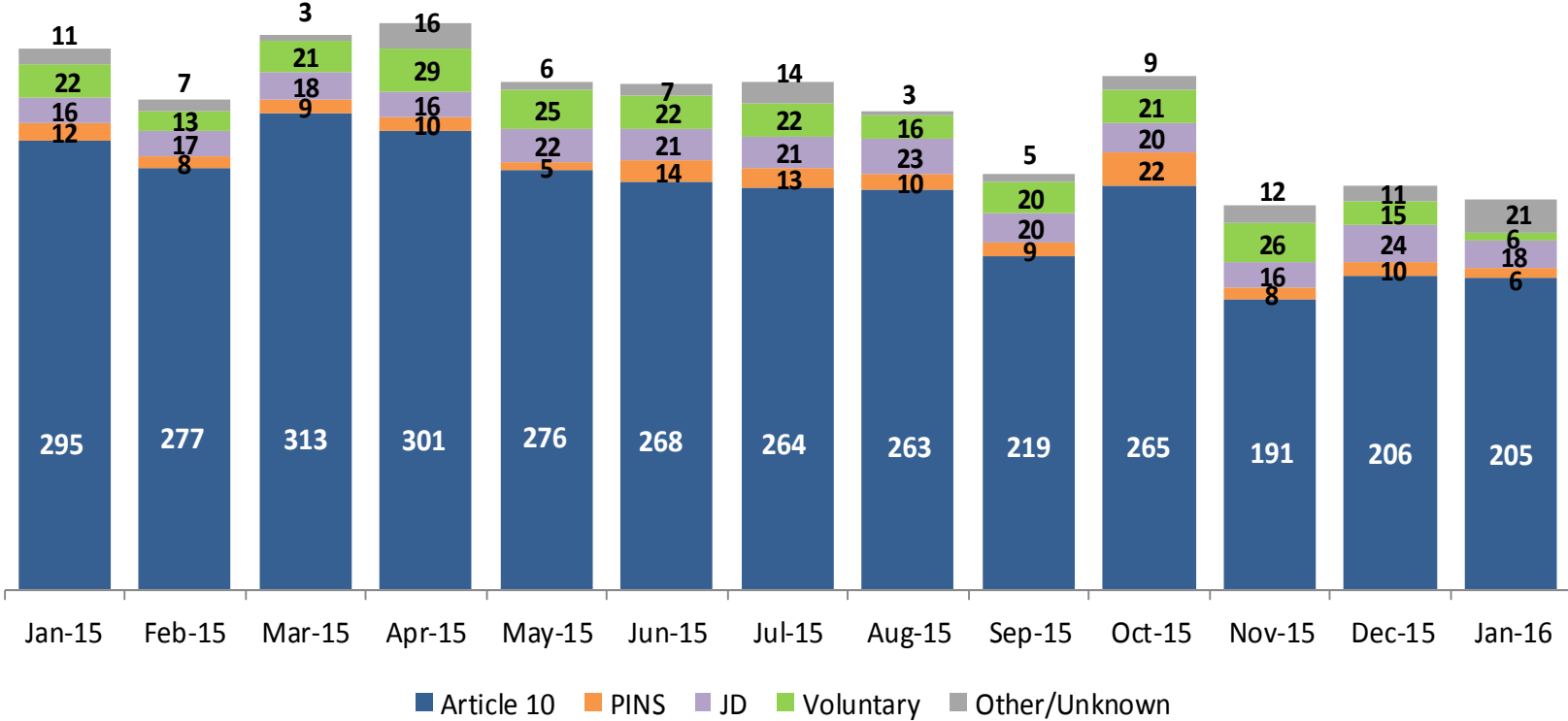
### Total Monthly Placements

January 2013 – January 2016



### Reason for Initial Placements into Foster Care

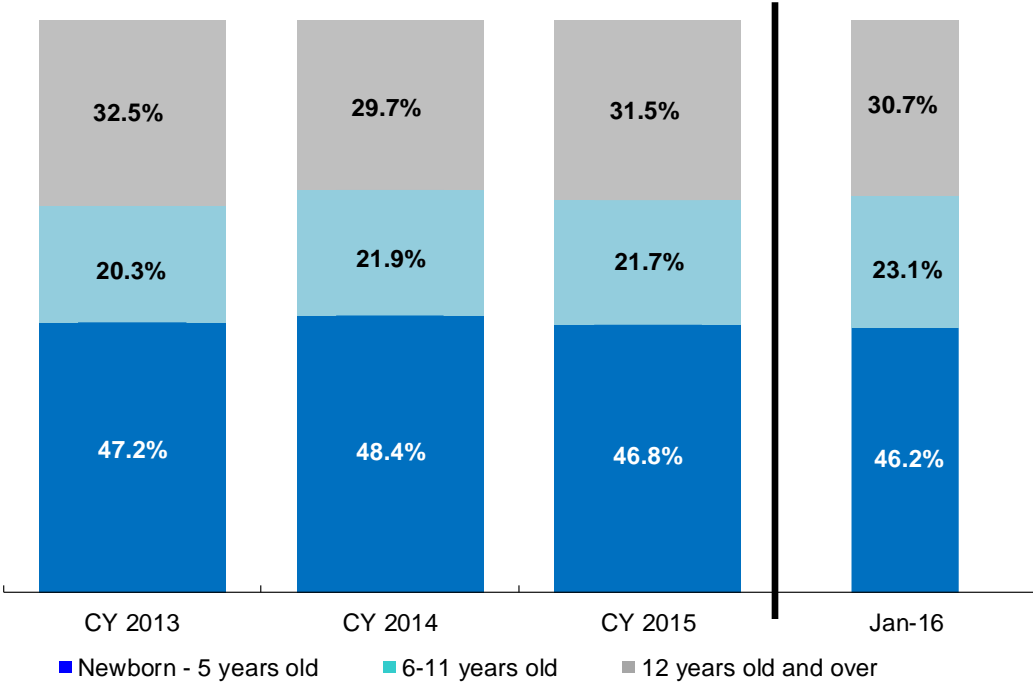
January 2015 – January 2016



	Jan 2015	Feb 2015	Mar 2015	Apr 2015	May 2015	Jun 2015	Jul 2015	Aug 2015	Sep 2015	Oct 2015	Nov 2015	Dec 2015	Jan 2016
Number of Placements	356	322	364	372	334	332	334	315	273	337	253	266	256

**Placements\* by Age**

CY 2013 - January 2016

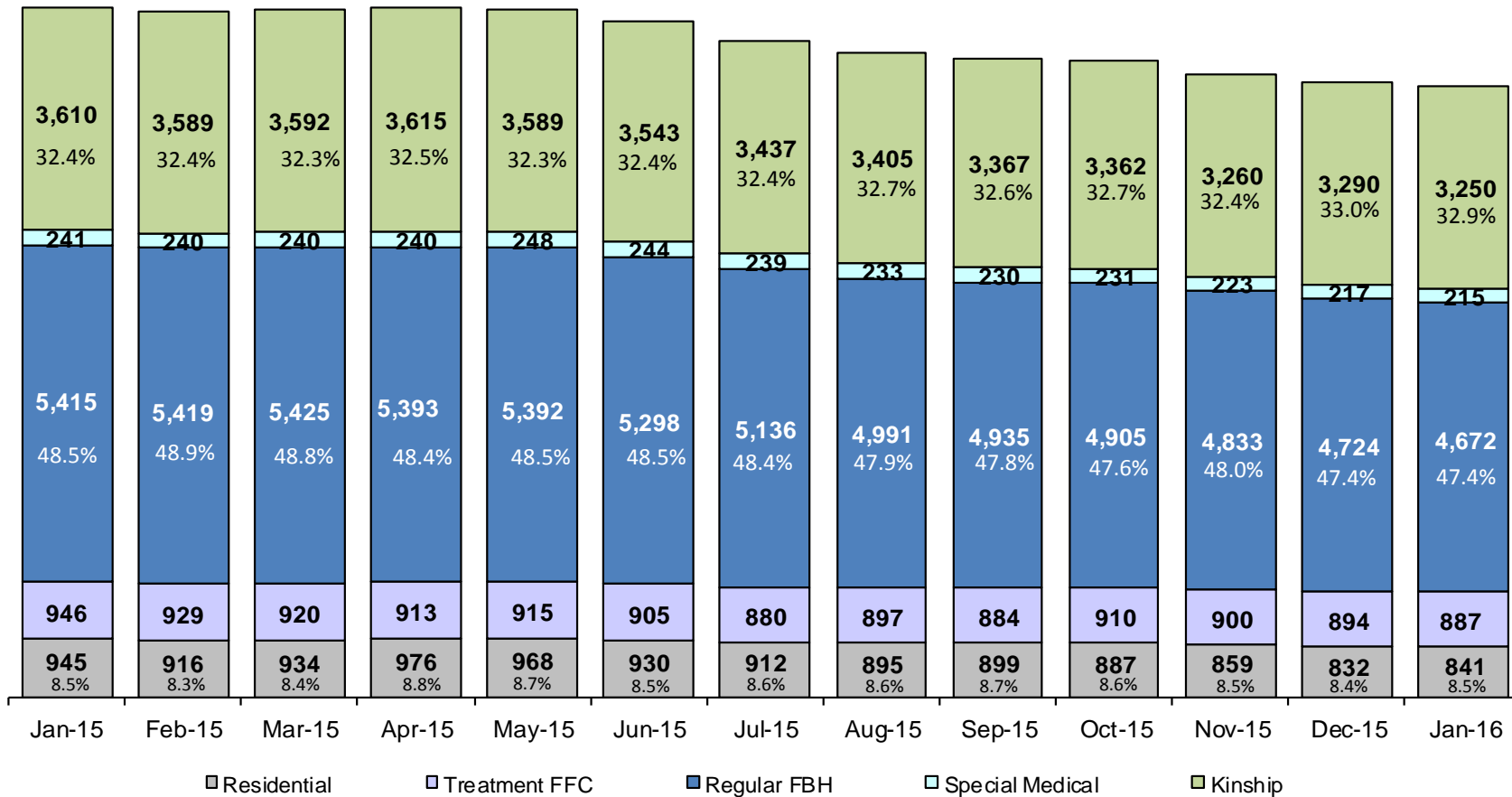


	CY 2013	CY 2014	CY 2015	Jan 2016
Placements (without JDs)	4,170	3,983	3,628	238

\*Excludes JD placements.

### Children in Foster Care\*

January 2015 – January 2016 (end of month)

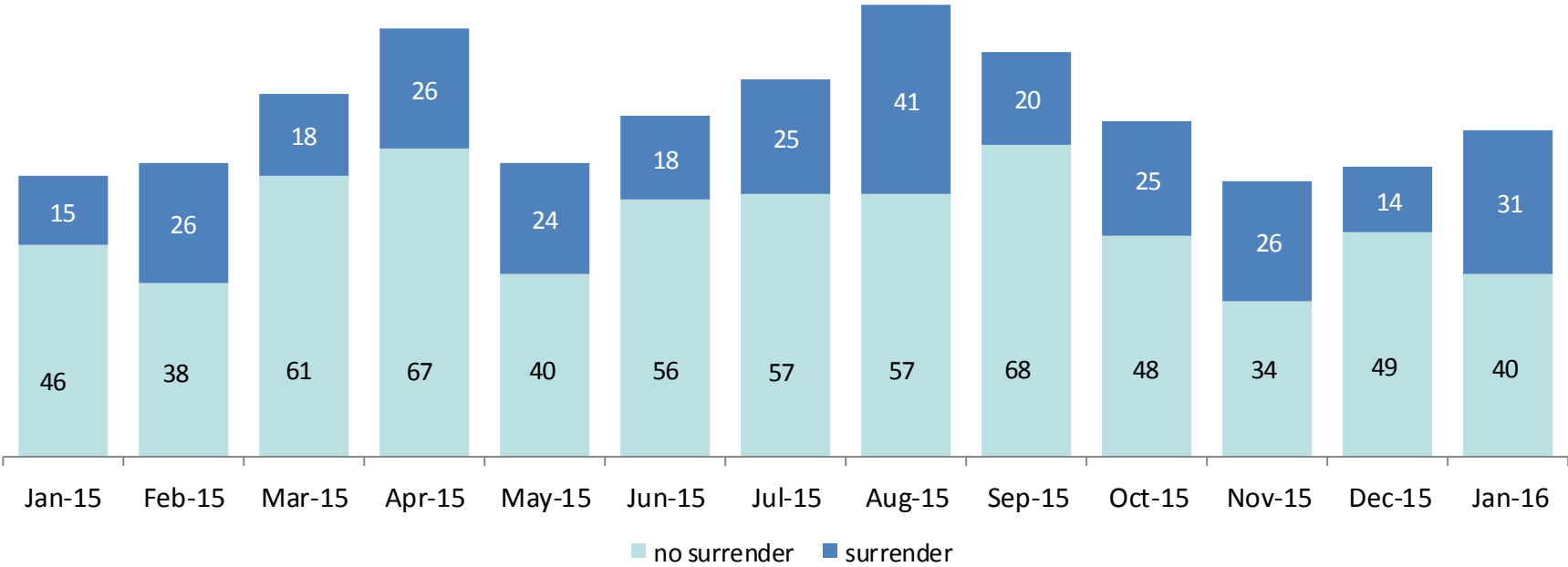


	Jan 2015	Feb 2015	Mar 2015	Apr 2015	May 2015	Jun 2015	Jul 2015	Aug 2015	Sep 2015	Oct 2015	Nov 2015	Dec 2015	Jan 2016
Number in Foster Care	11,157	11,093	11,111	11,137	11,112	10,920	10,604	10,421	10,315	10,295	10,075	9,957	9,865

\*Excludes JD placements and includes approximately 400 young children who are living in foster homes or residential care facilities with their mothers who are in foster care (8D children).

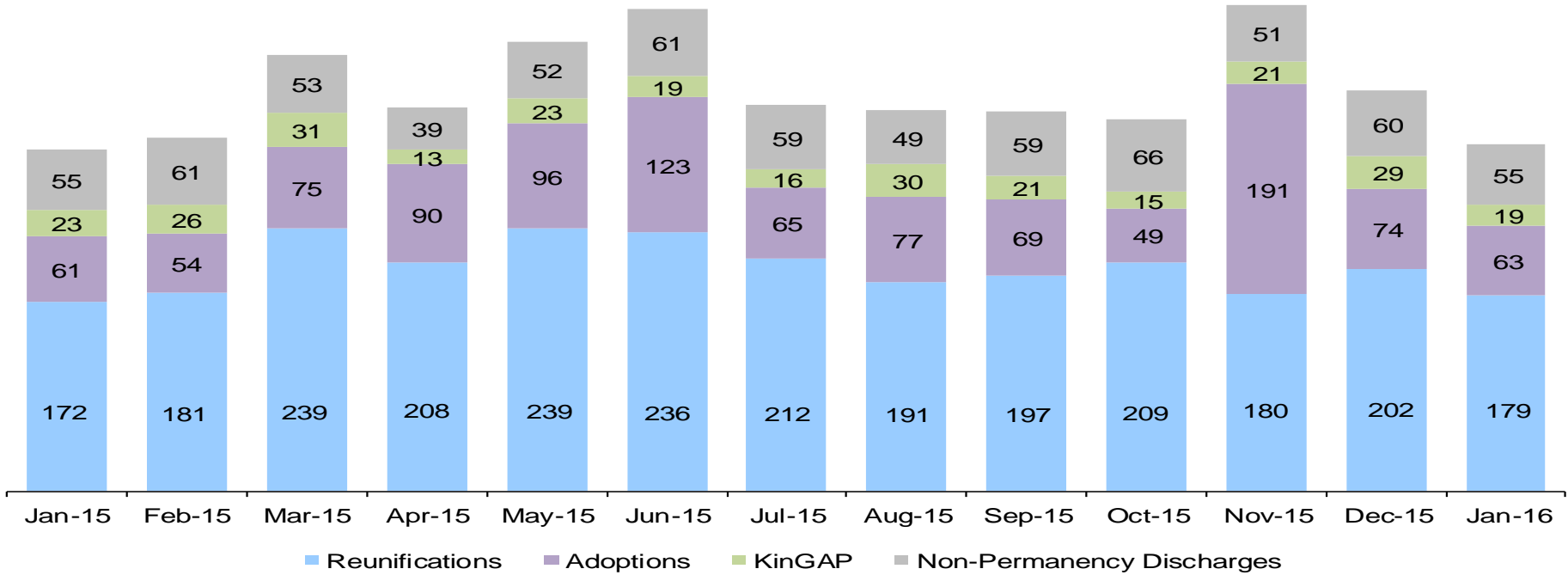


### Children Freed for Adoption, Surrender by at Least One Parent January 2015 – January 2016



	Jan 2015	Feb 2015	Mar 2015	Apr 2015	May 2015	Jun 2015	Jul 2015	Aug 2015	Sep 2015	Oct 2015	Nov 2015	Dec 2015	Jan 2016
Number Freed for Adoption	61	64	79	93	64	74	82	98	87	73	60	63	71

### Permanency and Non-Permanency\* Discharges from Foster Care\*\* January 2015 – January 2016



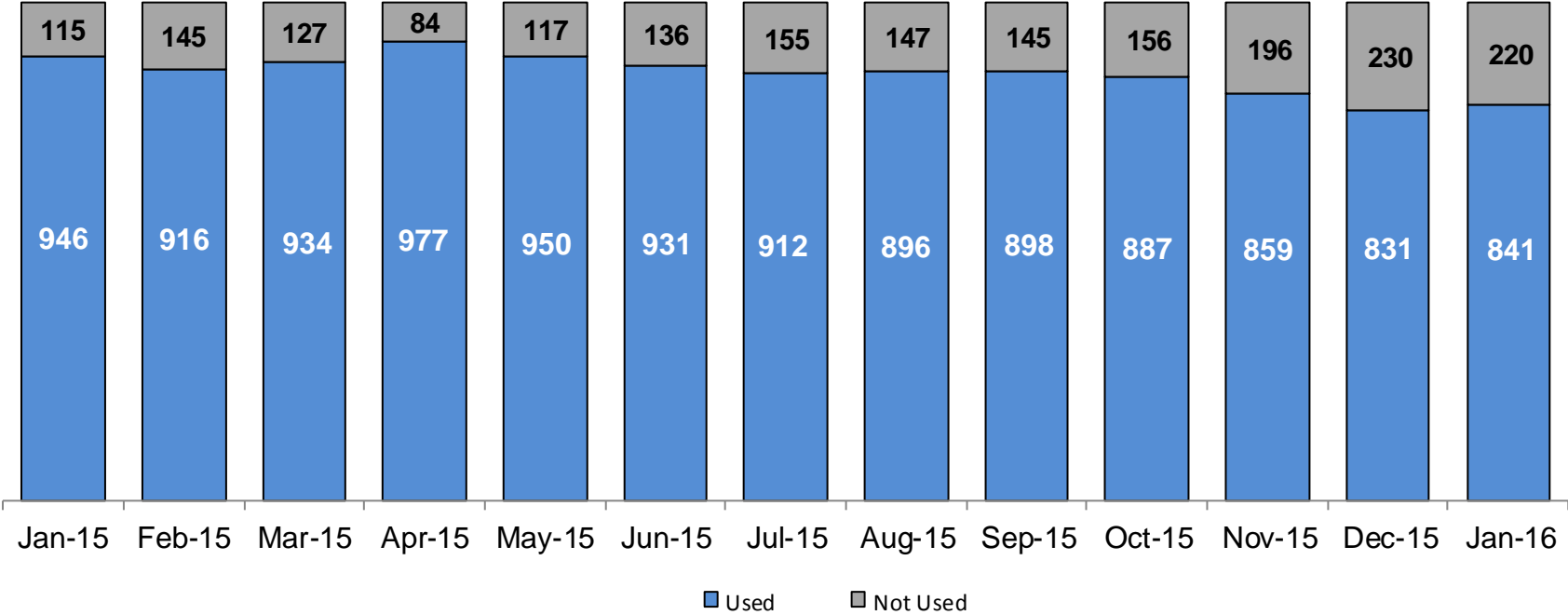
	Jan 2015	Feb 2015	Mar 2015	Apr 2015	May 2015	Jun 2015	Jul 2015	Aug 2015	Sep 2015	Oct 2015	Nov 2015	Dec 2015	Jan 2016
Number of Discharges	311	322	398	350	410	439	352	347	346	339	443	365	316

\*Non-permanency discharges include AWOL, APPLA , other discharge destinations such as psychiatric institutions and correctional facilities and discharges with unspecified destinations.

\*\*Excludes discharges of youth who entered care as a JD.

### Residential Care Capacity and Utilization

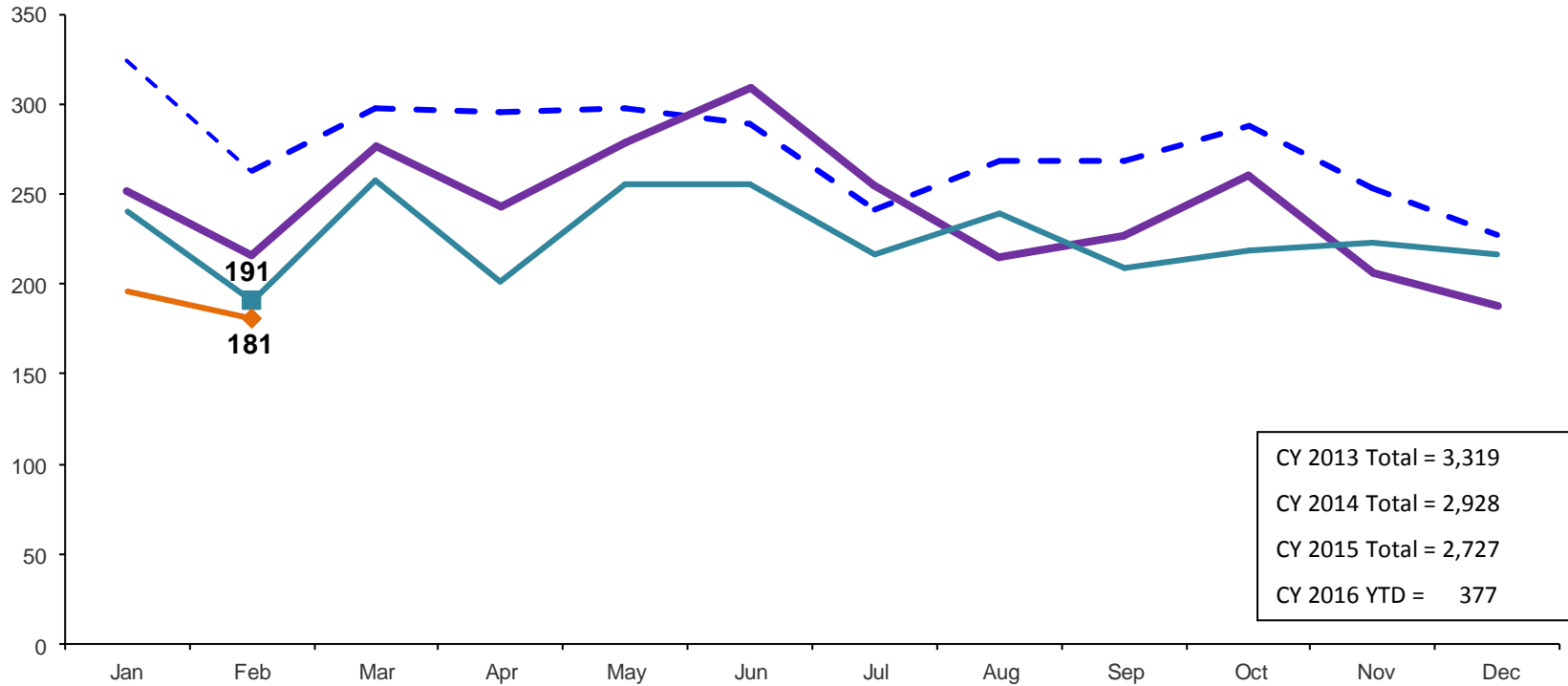
January 2015 – January 2016



	Jan 2015	Feb 2015	Mar 2015	Apr 2015	May 2015	Jun 2015	Jul 2015	Aug 2015	Sep 2015	Oct 2015	Nov 2015	Dec 2015	Jan 2016
Capacity	1,061	1,061	1,061	1,061	1,067	1,067	1,067	1,043	1,043	1,043	1,055	1,061	1,061

### Total Monthly Admissions to Detention

January 2013 – February 2016 (Monthly Total)

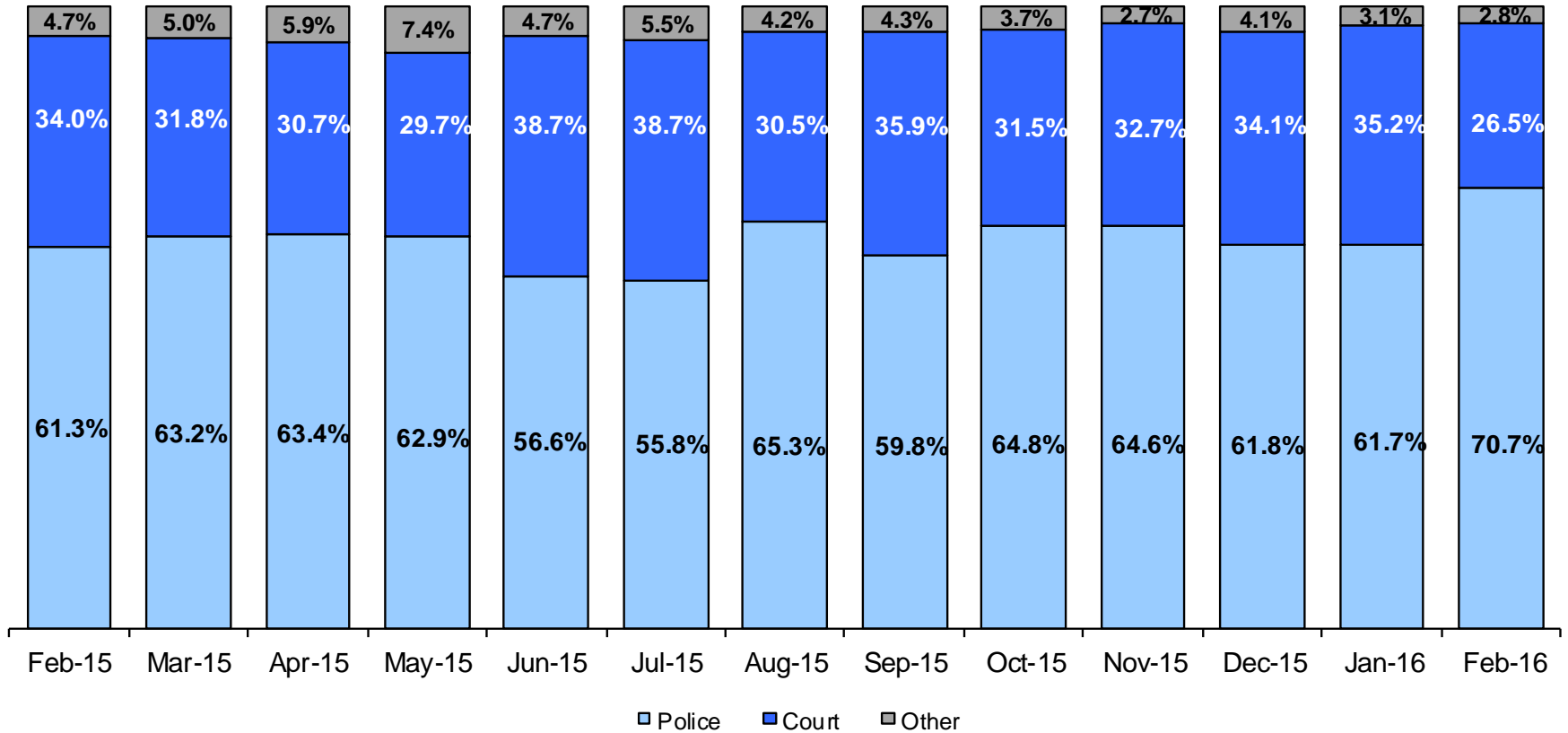


CY 2013 Total = 3,319  
 CY 2014 Total = 2,928  
 CY 2015 Total = 2,727  
 CY 2016 YTD = 377



### Admit Authority on Admissions

February 2015 – February 2016 (Monthly Total)



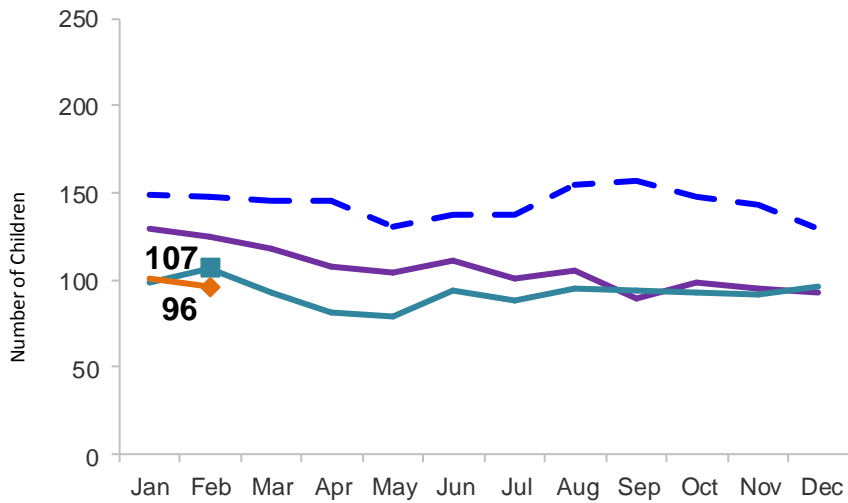
	Feb 2015	Mar 2015	Apr 2015	May 2015	Jun 2015	July 2015	Aug 2015	Sep 2015	Oct 2015	Nov 2015	Dec 2015	Jan 2016	Feb 2016
Number of Admissions	191	258	202	256	256	217	239	209	219	223	217	196	181

Note: Other Admit Authority includes the Sheriff Department, Department of Corrections and ACS.

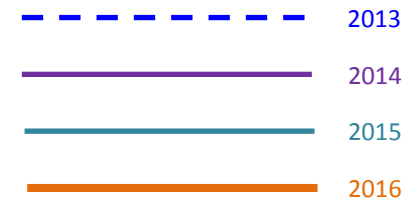
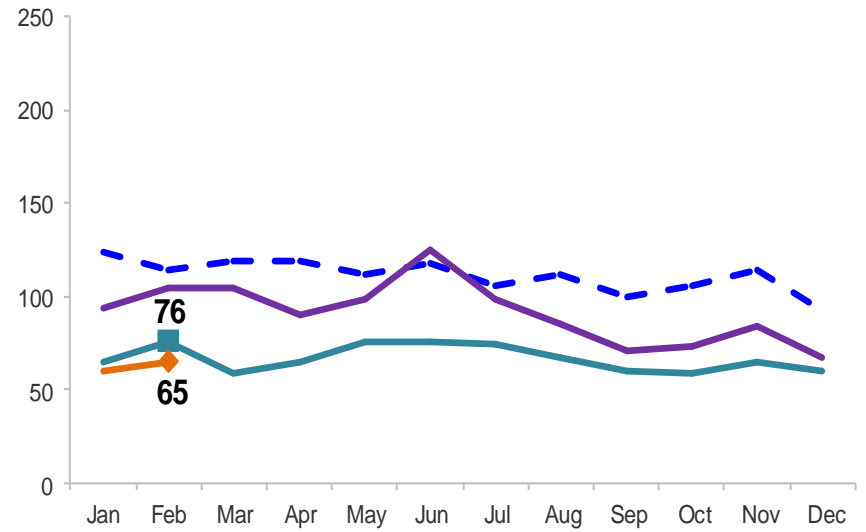
### Monthly Average Daily Population

January 2013 – February 2016

#### Secure Detention

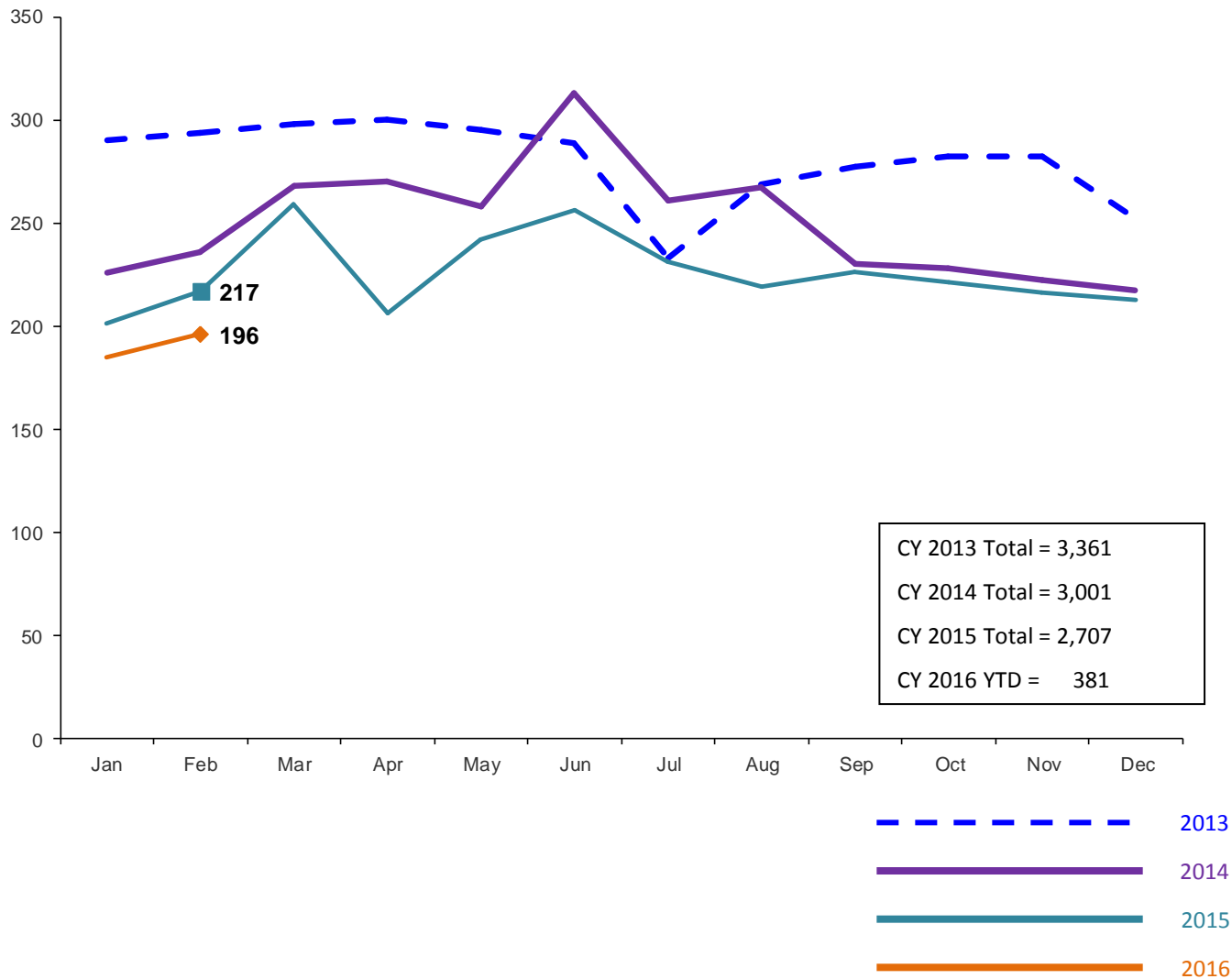


#### Non-Secure Detention



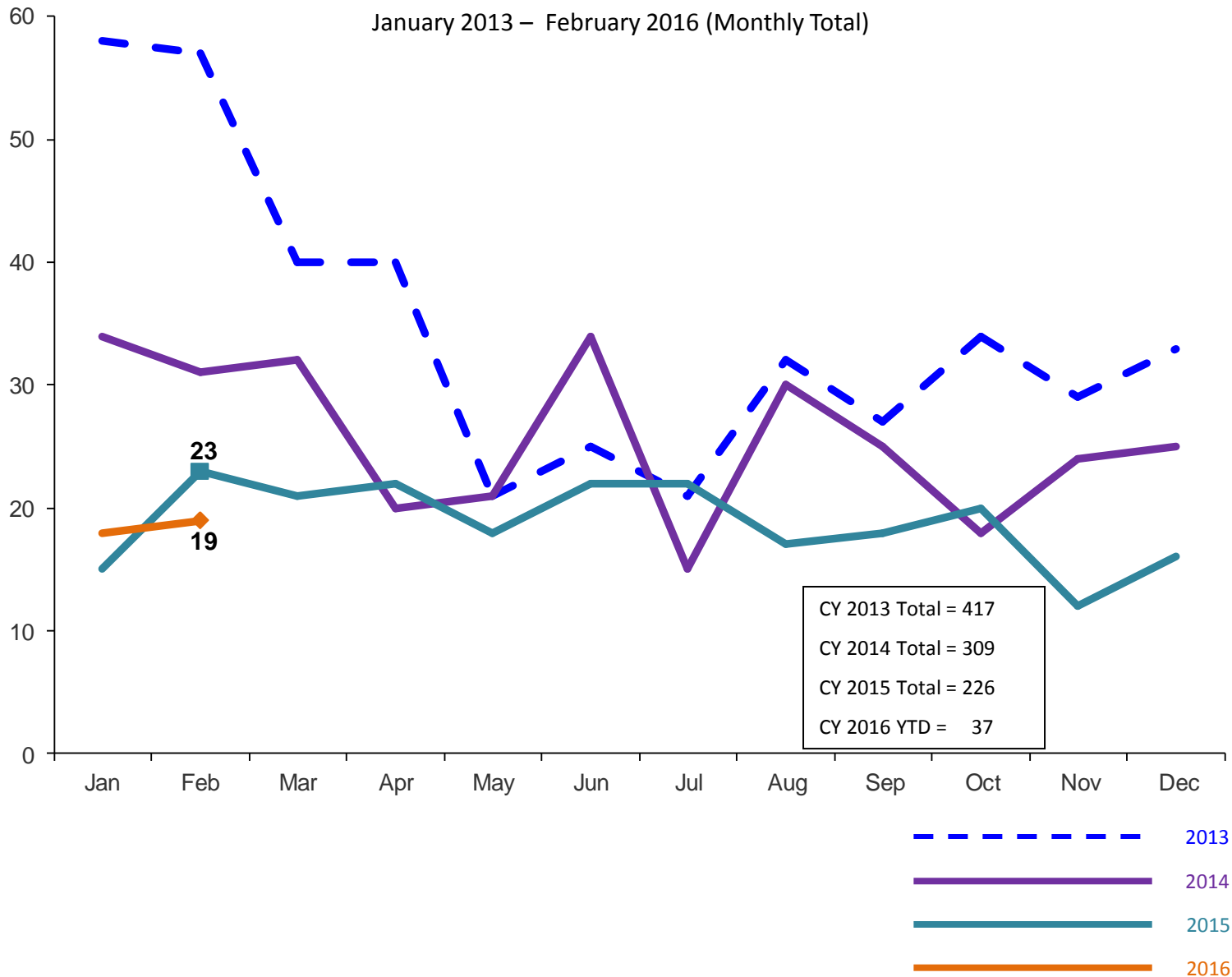
### Total Monthly Releases from Detention

January 2013 – February 2016 (Monthly Total)



### Close to Home Intakes\*

January 2013 – February 2016 (Monthly Total)

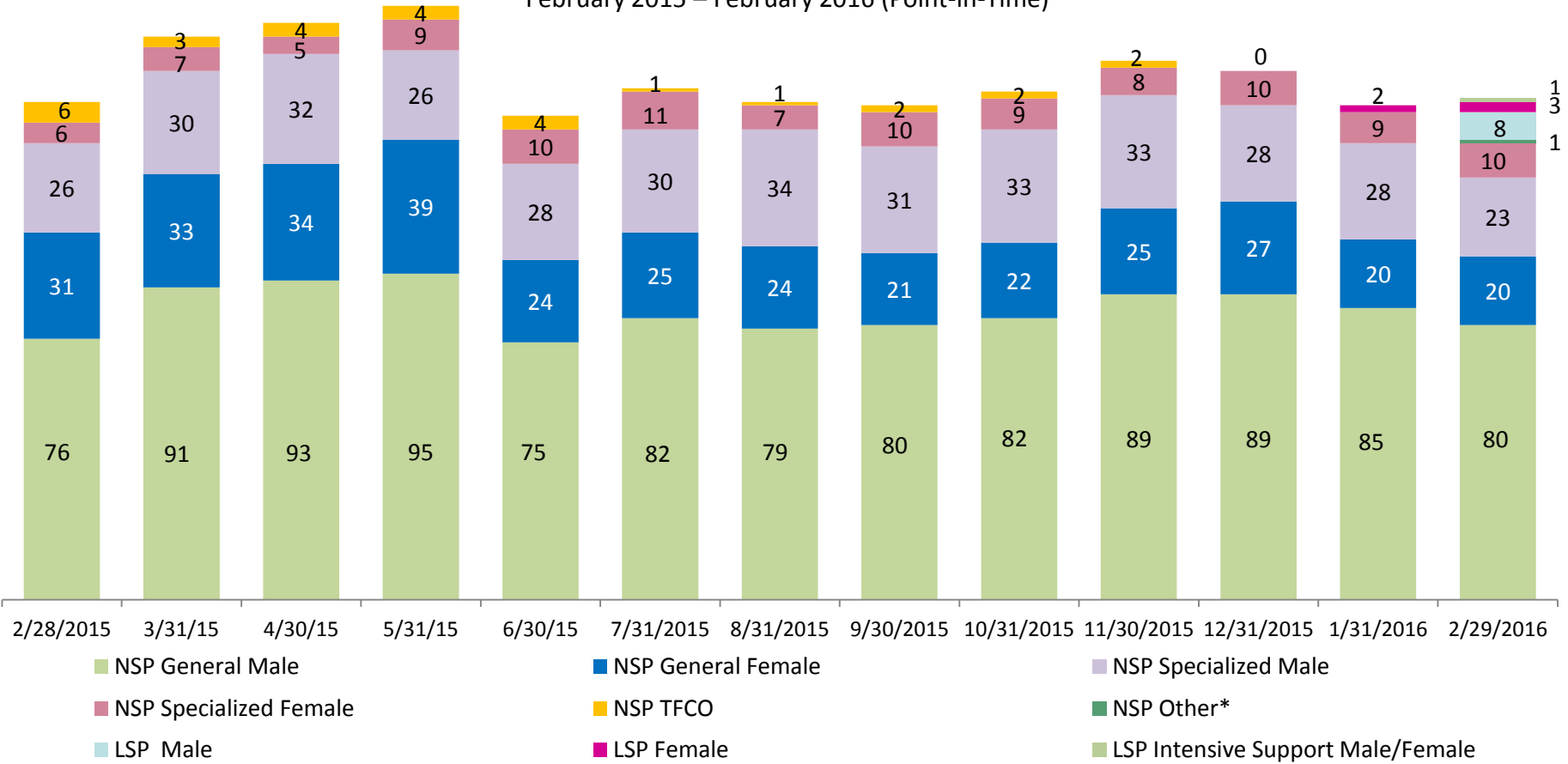


\*Beginning in December 2015 Close to Home Intakes include LSP as well as NSP.



### Close to Home Placement, in 24-hour Care

February 2015 – February 2016 (Point-in-Time)

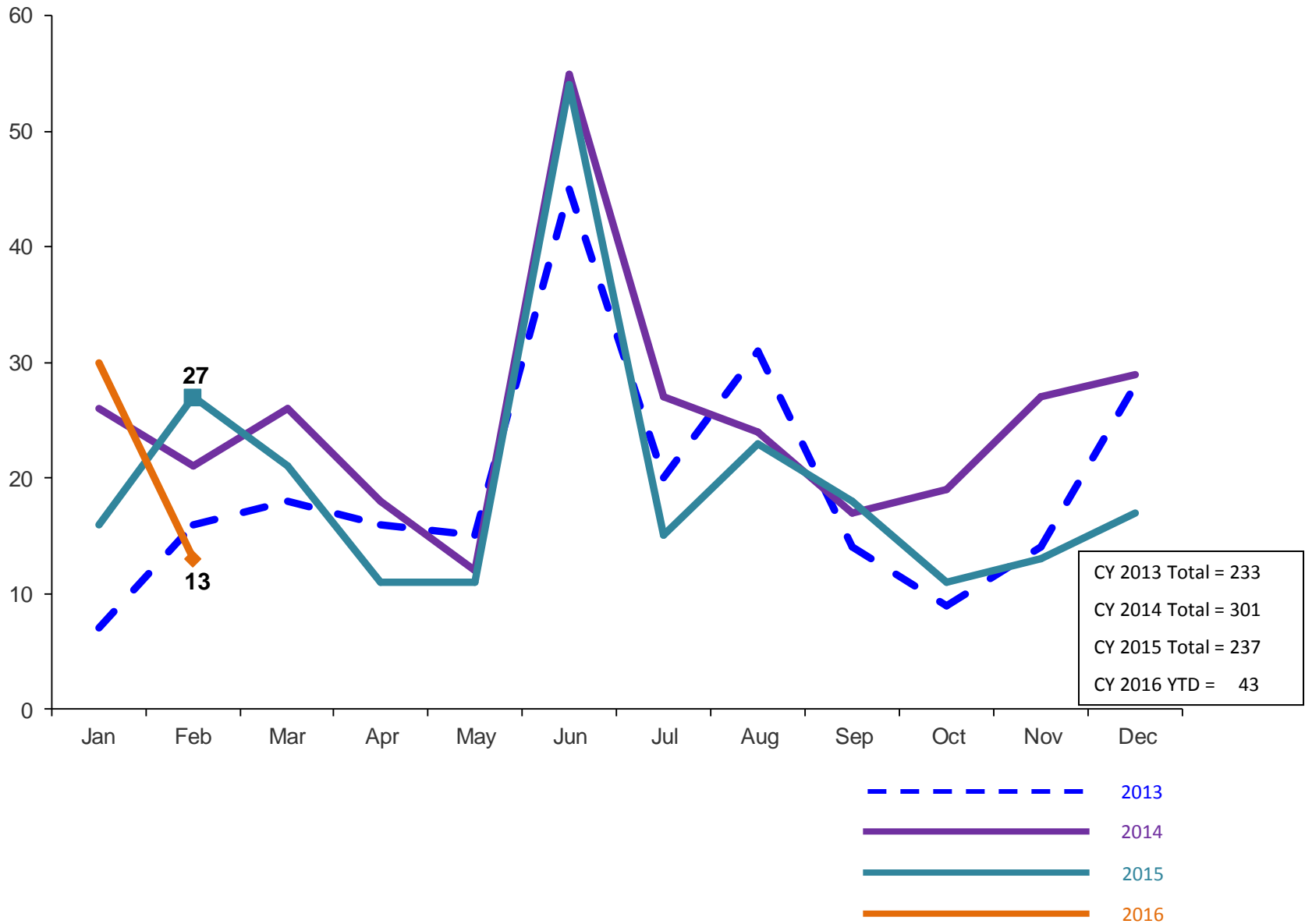


Number in Placement														
	2/28/15	3/31/15	4/30/15	5/31/15	6/30/15	7/31/15	8/31/15	9/30/15	10/31/15	11/30/15	12/31/15	1/31/16	2/29/16	
NSP	145	164	168	173	141	149	145	144	148	157	154	142	134	
LSP	0	0	0	0	0	0	0	0	0	0	2	6	12	

\*NSP Other includes youth in child welfare placements.

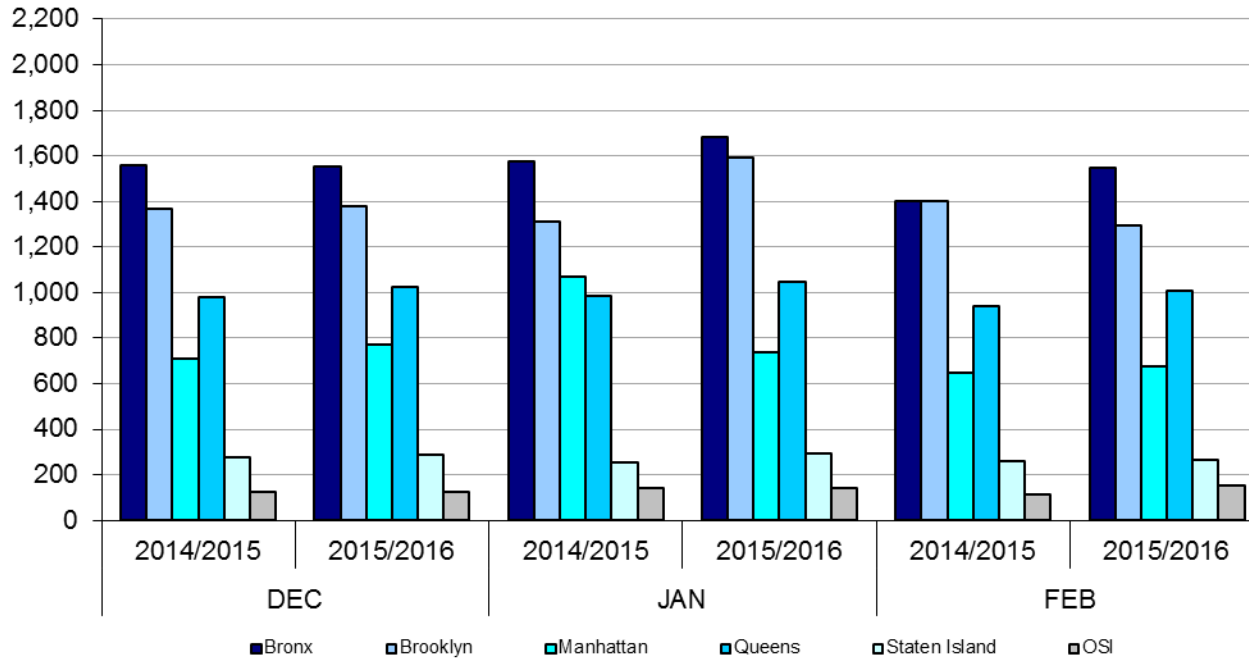
### Releases from Close to Home Placement to Aftercare

February 2013 – February 2016 (Monthly Total)



# Appendix

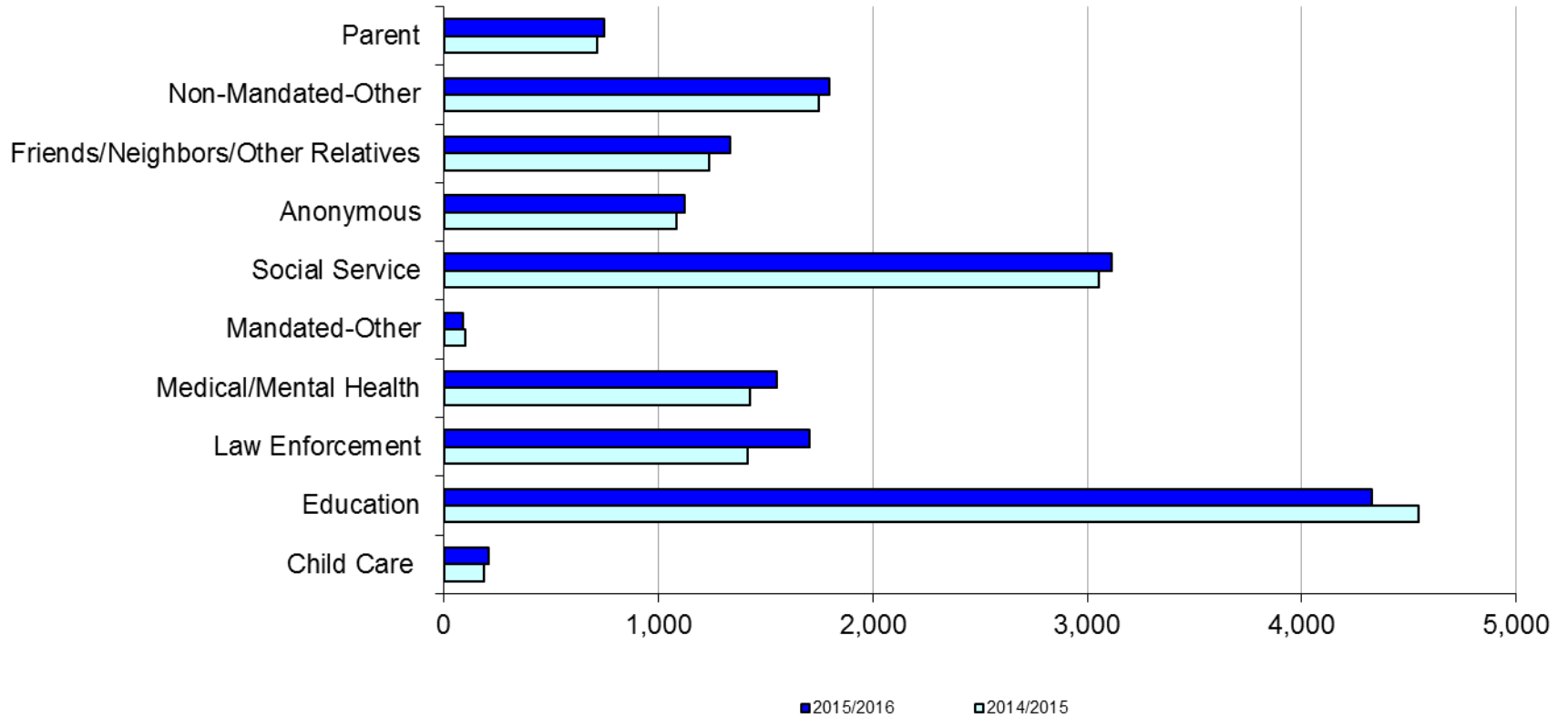
Figure 1: SCR Intakes by Borough, DEC 14 – FEB 15 and DEC 15 – FEB 16



**Table 1 - SCR Intake Changes by Borough, DEC 14 – FEB 15 and DEC 15 – FEB 16**

Month	Year	Bronx	Brooklyn	Manhattan	Queens	Staten Island	OSI	Other	Total
DEC	2014/2015	1,559	1,370	711	980	277	125	126	5,148
	2015/2016	1,552	1,377	772	1,024	285	124	143	5,277
	% Change	-0.4%	0.5%	8.6%	4.5%	2.9%	-0.8%	13.5%	2.5%
JAN	2014/2015	1,577	1,313	1,071	986	253	143	127	5,470
	2015/2016	1,685	1,592	737	1,047	292	140	127	5,620
	% Change	6.8%	21.2%	-31.2%	6.2%	15.4%	-2.1%	0.0%	2.7%
FEB	2014/2015	1,403	1,399	646	939	257	112	123	4,879
	2015/2016	1,549	1,295	678	1,009	267	153	134	5,085
	% Change	10.4%	-7.4%	5.0%	7.5%	3.9%	36.6%	8.9%	4.2%
Total	2014/2015	4,539	4,082	2,428	2,905	787	380	376	15,497
	2015/2016	4,786	4,264	2,187	3,080	844	417	404	15,982
	% Change	5.4%	4.5%	-9.9%	6.0%	7.2%	9.7%	7.4%	3.1%

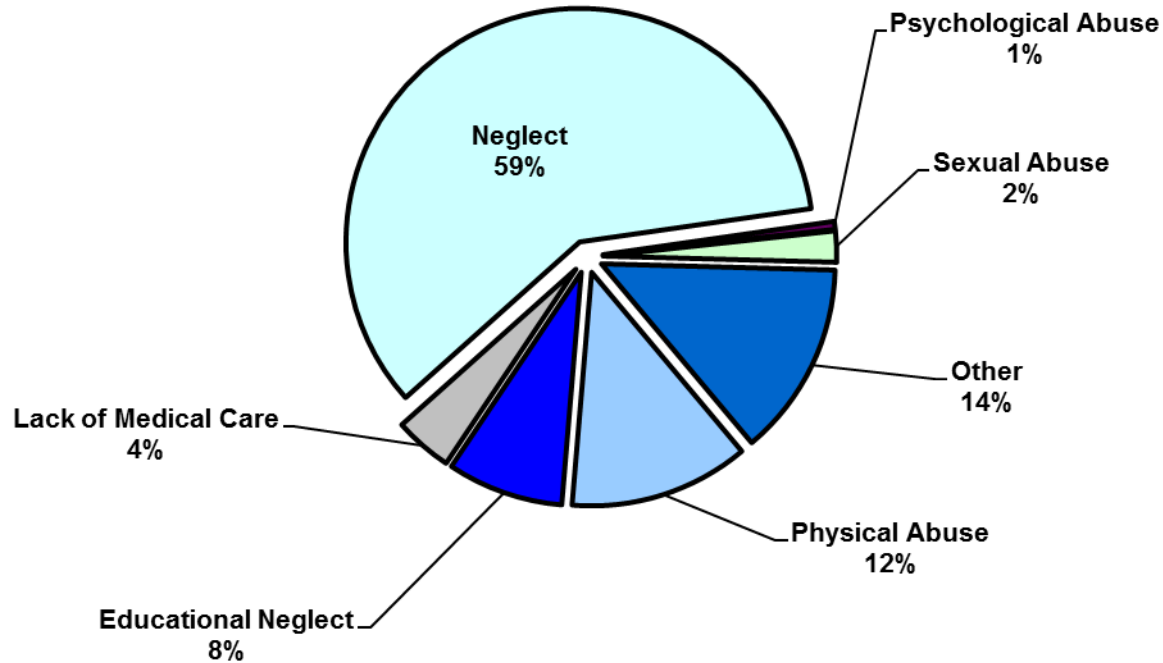
**Figure 2: Citywide SCR Intakes by Reporter Group, DEC 14 – FEB 15 and DEC 15 – FEB 16**



**Table 2 - SCR Intakes by Reporter Group, DEC 14 – FEB 15 and DEC 15 – FEB 16**

Year	Child Care/ Substitute Care Personnel	Educational Personnel	Law Enforcement	Medical/ Mental Health Personnel	Mandated- Other	Social Service Personnel	Anonymous	Friends/ Neighbors/ Other Relatives	Non- Mandated- Other	Parent	Foster Parent	Total
<b>Bronx</b>												
2014/2015	45	1,402	318	402	25	938	317	339	544	208	1	4,539
2015/2016	55	1,391	418	426	23	940	316	408	588	222	0	4,787
% Change	22.2%	-0.8%	31.4%	6.0%	-8.0%	0.2%	-0.3%	20.4%	8.1%	6.7%	-100.0%	5.5%
<b>Brooklyn</b>												
2014/2015	48	1,274	372	359	29	724	307	339	458	172	0	4,082
2015/2016	61	1,205	491	397	19	781	326	378	437	168	2	4,265
% Change	27.1%	-5.4%	32.0%	10.6%	-34.5%	7.9%	6.2%	11.5%	-4.6%	-2.3%	--	4.5%
<b>Manhattan</b>												
2014/2015	24	539	299	256	17	498	183	222	284	104	0	2,426
2015/2016	28	474	305	232	14	465	165	173	231	98	1	2,186
% Change	16.7%	-12.1%	2.0%	-9.4%	-17.6%	-6.6%	-9.8%	-22.1%	-18.7%	-5.8%	--	-9.9%
<b>Queens</b>												
2014/2015	31	966	273	260	14	582	160	224	292	103	0	2,905
2015/2016	33	931	310	300	17	603	187	247	331	119	0	3,078
% Change	6.5%	-3.6%	13.6%	15.4%	21.4%	3.6%	16.9%	10.3%	13.4%	15.5%	--	6.0%
<b>Staten Island</b>												
2014/2015	11	279	54	65	6	108	79	79	53	51	0	785
2015/2016	12	255	73	102	5	121	78	90	79	29	0	844
% Change	9.1%	-8.6%	35.2%	56.9%	-16.7%	12.0%	-1.3%	13.9%	49.1%	-43.1%	--	7.5%
<b>OSI</b>												
2014/2015	17	47	20	39	6	71	31	11	88	51	0	381
2015/2016	20	37	29	44	6	81	26	20	88	62	4	417
% Change	17.6%	-21.3%	45.0%	12.8%	0.0%	14.1%	-16.1%	81.8%	0.0%	21.6%	--	9.4%
<b>Other</b>												
2014/2015	9	36	81	45	2	134	7	25	32	26	2	399
2015/2016	2	35	77	52	3	123	23	21	44	51	0	431
% Change	-77.8%	-2.8%	-4.9%	15.6%	50.0%	-8.2%	228.6%	-16.0%	37.5%	96.2%	-100.0%	8.0%
<b>Citywide</b>												
2014/2015	185	4,543	1,417	1,426	99	3,055	1,084	1,239	1,751	715	3	15,517
2015/2016	211	4,328	1,703	1,553	87	3,114	1,121	1,337	1,798	749	7	16,008
% Change	14.1%	-4.7%	20.2%	8.9%	-12.1%	1.9%	3.4%	7.9%	2.7%	4.8%	133.3%	3.2%

**Figure 3: SCR Allegations, DEC 15 – FEB 16**



Total Allegations = 40,029

Allegations are grouped as follows: Physical Abuse - burn, fatality, fracture, choking, twisting, shaking, excessive corporal punishment, internal injuries, lacerations, bruises, welts, poisoning, noxious substances; Educational Neglect – educational neglect; Lack of Medical Care – lack of medical care; Neglect - inadequate guardianship, inadequate food, clothing, shelter, lack of supervision, malnutrition, failure to thrive, swelling, dislocations, sprains; Psychological Abuse - isolation, emotional neglect; Sexual Abuse – sexual abuse; and Other -parental drug use, child drug use, abandonment, inappropriate custodial conduct.

**Table 3 - SCR Allegations, DEC 14 - FEB 15 and DEC 15 – FEB 16**

Year	Physical Abuse	Educational Neglect	Lack of Medical Care	Neglect	Psychological Abuse	Sexual Abuse	Other	Total
<b>Bronx</b>								
2014/2015	1,356	1,393	503	7,358	71	255	1,538	12,474
2015/2016	1,462	1,239	529	7,460	66	199	1,683	12,638
% Change	7.8%	-11.1%	5.2%	1.4%	-7.0%	-22.0%	9.4%	1.3%
<b>Brooklyn</b>								
2014/2015	1,327	1,099	420	6,435	59	216	1,415	10,971
2015/2016	1,299	993	435	6,583	55	229	1,302	10,896
% Change	-2.1%	-9.6%	3.6%	2.3%	-6.8%	6.0%	-8.0%	-0.7%
<b>Manhattan</b>								
2014/2015	580	432	191	2735	21	69	554	4,582
2015/2016	550	322	191	2722	22	103	648	4,558
% Change	-5.2%	-25.5%	0.0%	-0.5%	4.8%	49.3%	17.0%	-0.5%
<b>Queens</b>								
2014/2015	1,029	519	305	4,186	50	134	944	7,167
2015/2016	1,004	427	274	4,053	48	178	1,027	7,011
% Change	-2.4%	-17.7%	-10.2%	-3.2%	-4.0%	32.8%	8.8%	-2.2%
<b>Staten Island</b>								
2014/2015	250	209	69	1,239	9	36	352	2,164
2015/2016	303	166	83	1,335	13	40	381	2,321
% Change	21.2%	-20.6%	20.3%	7.7%	44.4%	11.1%	8.2%	7.3%
<b>OSI</b>								
2014/2015	263	56	51	1,017	4	39	157	1,587
2015/2016	250	41	62	1,057	10	85	150	1,655
% Change	-4.9%	-26.8%	21.6%	3.9%	150.0%	117.9%	-4.5%	4.3%
<b>Other</b>								
2014/2015	92	53	40	525	5	25	149	889
2015/2016	114	30	31	540	8	29	198	950
% Change	23.9%	-43.4%	-22.5%	2.9%	60.0%	16.0%	32.9%	6.9%
<b>Citywide</b>								
2014/2015	4,897	3,761	1,579	23,495	219	774	5,109	39,834
2015/2016	4,982	3,218	1,605	23,750	222	863	5,389	40,029
% Change	1.7%	-14.4%	1.6%	1.1%	1.4%	11.5%	5.5%	0.5%



**TABLE 4 - Purchased Preventive Cases  
Opened and Closed  
January 2012 to February 2016**

Month	Opened Cases	Closed Cases
<b>2012</b>		
Jan-12	870	629
Feb-12	889	835
Mar-12	944	991
Apr-12	997	870
May-12	1,117	979
Jun-12	965	869
Jul-12	853	979
Aug-12	917	1,007
Sep-12	727	900
Oct-12	875	915
Nov-12	738	702
Dec-12	938	871
<b>2013</b>		
Jan-13	753	884
Feb-13	742	916
Mar-13	801	1,171
Apr-13	785	988
May-13	682	1,337
Jun-13	775	780
Jul-13	802	1,004
Aug-13	777	1,084
Sep-13	727	724
Oct-13	780	765
Nov-13	725	685
Dec-13	946	552
<b>2014</b>		
Jan-14	841	640
Feb-14	885	679
Mar-14	998	874
Apr-14	919	896
May-14	919	888
Jun-14	890	762
Jul-14	973	1,077
Aug-14	826	943
Sep-14	841	705
Oct-14	835	819
Nov-14	677	638
Dec-14	1,062	721
<b>2015</b>		
Jan-15	728	716
Feb-15	902	590
Mar-15	1,122	686
Apr-15	977	743
May-15	914	842
Jun-15	1,068	797
Jul-15	899	1,070
Aug-15	893	891
Sep-15	764	847
Oct-15	749	772
Nov-15	746	652
Dec-15	1,013	707
<b>2016</b>		
Jan-16	792	668
Feb-16	897	667

**Table 5 - Referrals to Selected Preventive Services by Source  
January 2012 to February 2016**

Month	Total Referrals	Division of Child Protection	Foster Care Agencies	PPRS Transfer	School	Self	Other Sources*
<b>2012</b>							
Jan-12	1,431	66.5%	0.7%	8.5%	3.6%	3.8%	17.0%
Feb-12	1,043	78.2%	1.1%	9.0%	1.9%	6.7%	3.1%
Mar-12	1,525	73.6%	0.9%	6.0%	1.8%	3.9%	13.8%
Apr-12	1,370	72.8%	1.0%	9.4%	1.2%	4.2%	11.4%
May-12	1,463	70.9%	1.0%	7.6%	1.1%	4.4%	15.0%
Jun-12	1,279	73.8%	0.5%	5.9%	1.0%	4.7%	14.2%
Jul-12	1,308	77.4%	1.2%	7.0%	0.3%	3.7%	10.5%
Aug-12	1,391	74.0%	0.9%	11.7%	0.3%	2.9%	10.2%
Sep-12	1,110	70.5%	1.9%	9.6%	1.2%	5.0%	11.9%
Oct-12	1,159	61.1%	1.4%	12.6%	2.7%	4.9%	17.3%
Nov-12	1,106	67.0%	1.0%	9.9%	2.2%	4.7%	15.3%
Dec-12	1,206	68.7%	0.8%	5.8%	2.7%	5.6%	16.4%
CY 2012	15,391	71.3%	1.0%	8.5%	1.6%	4.5%	13.1%
<b>2013</b>							
Jan-13	1,474	74.1%	1.2%	7.3%	1.2%	3.7%	12.5%
Feb-13	1,308	75.8%	1.1%	8.0%	1.6%	2.9%	10.6%
Mar-13	1,270	73.5%	1.2%	6.7%	2.4%	3.9%	12.3%
Apr-13	1,421	77.9%	0.8%	7.4%	0.9%	3.0%	10.1%
May-13	1,320	68.4%	0.5%	10.2%	1.5%	3.8%	15.5%
Jun-13	953	69.2%	1.2%	9.4%	2.6%	5.0%	12.6%
Jul-13	1,014	66.3%	1.9%	14.4%	1.6%	3.9%	11.9%
Aug-13	1,212	70.5%	0.7%	11.8%	0.7%	4.7%	11.6%
Sep-13	1,262	64.0%	2.1%	11.3%	1.7%	6.7%	14.2%
Oct-13	1,319	61.0%	1.1%	9.0%	2.9%	7.5%	18.5%
Nov-13	1,249	55.9%	1.6%	10.5%	4.6%	9.2%	18.3%
Dec-13	1,464	62.2%	1.2%	8.2%	2.3%	9.2%	17.0%
CY 2013	15,266	68.3%	1.2%	9.4%	2.0%	5.3%	13.8%
<b>2014</b>							
Jan-14	1,537	70.0%	1.2%	6.6%	2.3%	5.8%	14.2%
Feb-14	1,334	69.7%	0.8%	8.4%	1.7%	5.5%	13.9%
Mar-14	1,612	70.0%	1.4%	8.6%	1.6%	5.3%	13.1%
Apr-14	1,525	70.2%	0.9%	7.6%	2.1%	3.7%	15.4%
May-14	1,580	74.4%	0.7%	8.3%	1.4%	5.2%	10.0%
Jun-14	1,550	78.6%	1.2%	6.3%	1.2%	3.2%	9.4%
Jul-14	1,659	79.6%	1.5%	6.7%	0.4%	4.2%	7.6%
Aug-14	1,395	72.2%	1.6%	10.8%	0.3%	4.9%	10.3%
Sep-14	1,597	49.4%	1.5%	7.6%	0.3%	4.5%	36.8%
Oct-14	1,634	68.2%	1.9%	10.0%	1.2%	4.6%	14.1%
Nov-14	1,311	66.4%	0.9%	14.3%	2.4%	3.9%	12.1%
Dec-14	1,785	71.1%	1.4%	8.8%	2.9%	4.8%	11.0%
CY 2014	18,519	70.1%	1.3%	8.6%	1.5%	4.6%	14.0%
<b>2015</b>							
Jan-15	1,430	74.4%	1.6%	8.7%	1.8%	3.8%	9.7%
Feb-15	1,538	76.5%	0.8%	8.1%	1.8%	4.7%	8.2%
Mar-15	1,798	74.6%	0.9%	7.3%	1.6%	4.8%	10.8%
Apr-15	1,719	78.2%	1.3%	7.2%	0.6%	3.5%	9.1%
May-15	1,561	77.2%	1.0%	5.1%	1.5%	4.5%	10.8%
Jun-15	1,716	77.4%	1.1%	7.7%	1.2%	3.5%	9.1%
Jul-15	1,511	79.6%	0.9%	7.2%	0.3%	3.8%	8.2%
Aug-15	1,418	79.3%	2.2%	7.8%	0.2%	3.1%	7.5%
Sep-15	1,209	72.1%	2.8%	10.4%	0.5%	5.5%	8.6%
Oct-15	1,338	70.4%	1.9%	8.3%	2.1%	5.8%	11.6%
Nov-15	1,220	68.2%	1.8%	9.6%	1.4%	6.2%	12.8%
Dec-15	1,526	73.5%	1.6%	8.0%	2.0%	5.0%	9.9%
<b>2016</b>							
Jan-16	1,370	73.6%	1.6%	8.2%	0.7%	5.4%	10.6%
Feb-16	1,436	75.8%	2.2%	7.8%	1.0%	3.8%	9.3%

\*Other Community Sources includes the Department of Homeless Services, Family Court, FAP, Hospitals and Medical facilities, the NYC Housing Authority, PINS/DAS, Probation, and Sponsor Agencies.