

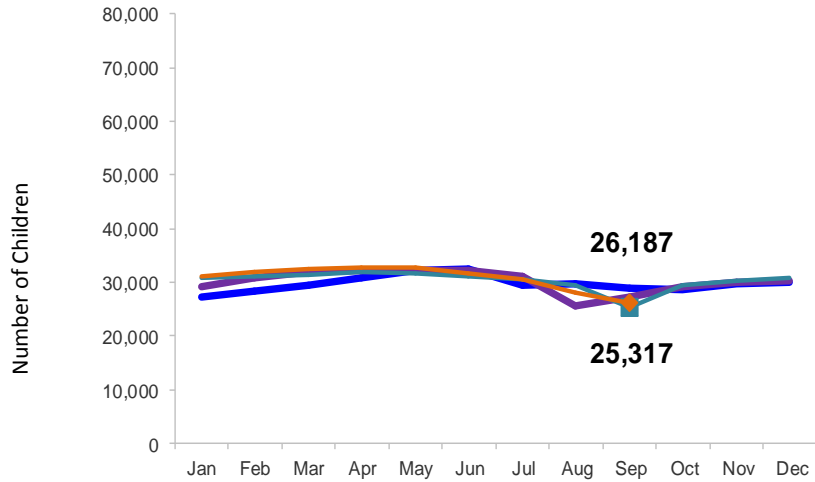


Flash

October 2016

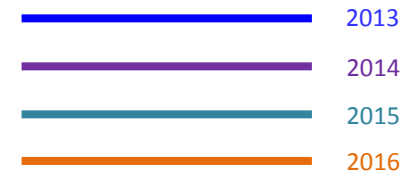
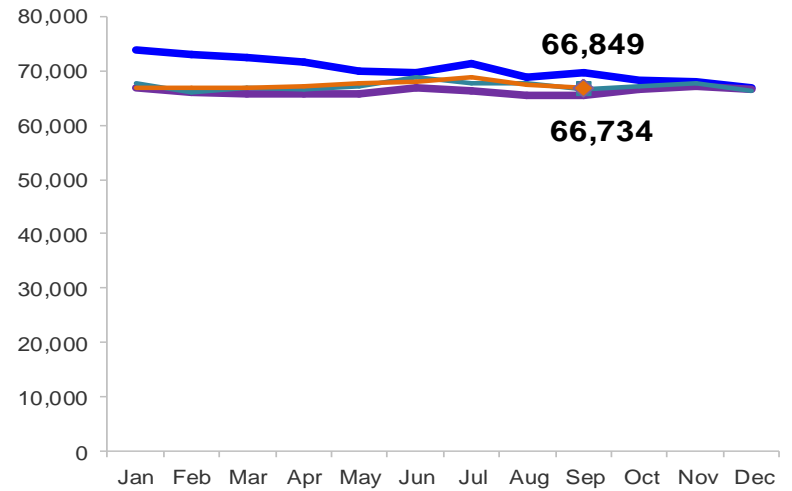
Children Enrolled in Contracted EarlyLearn Programs

January 2013 – September 2016 (End of Month)



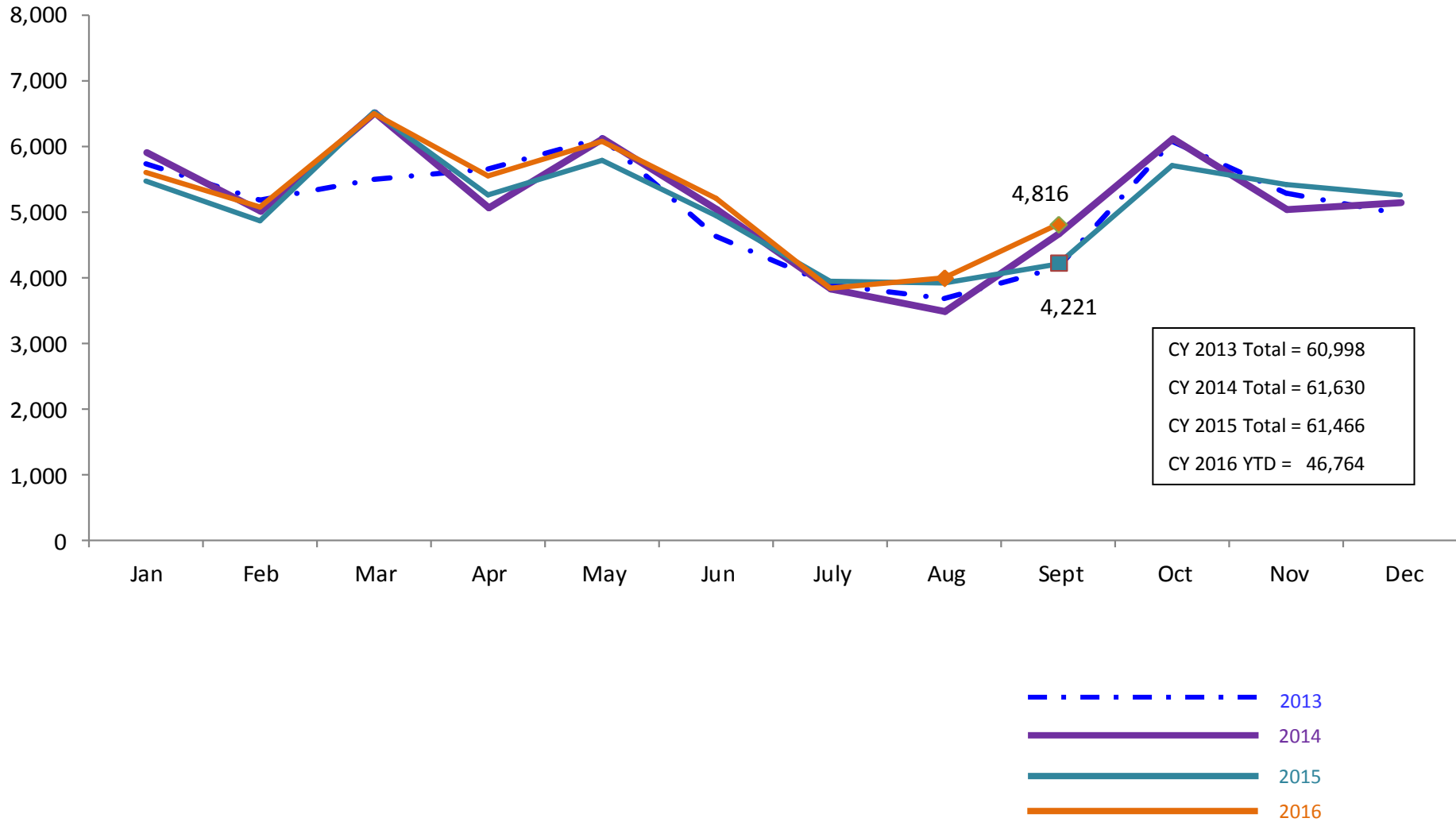
Children Using Vouchers for Child Care

January 2013 – September 2016 (End of Month)



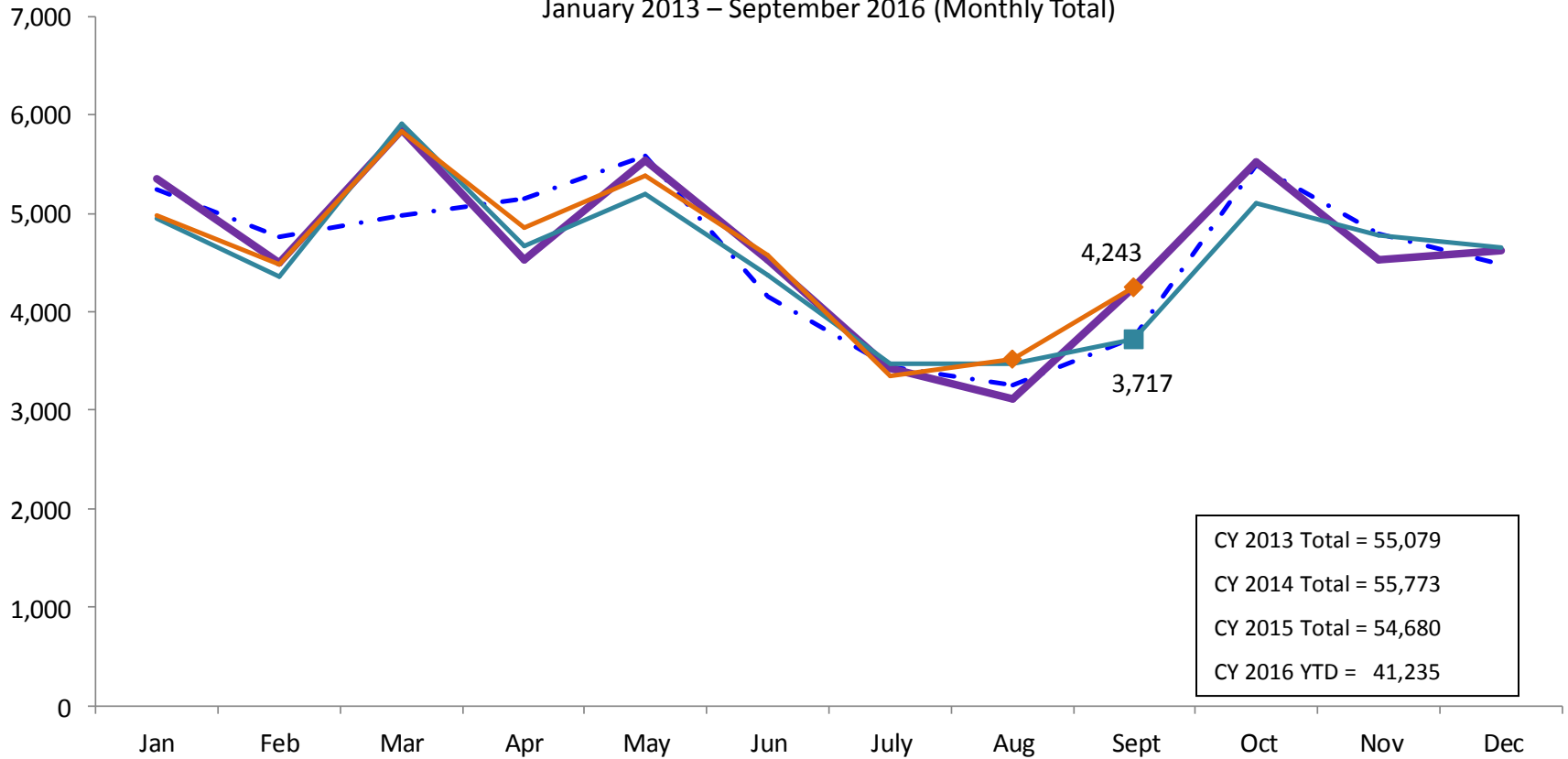
SCR Intakes

January 2013 – September 2016 (Monthly Total)

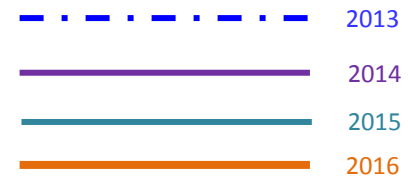


SCR Consolidated Investigations

January 2013 – September 2016 (Monthly Total)

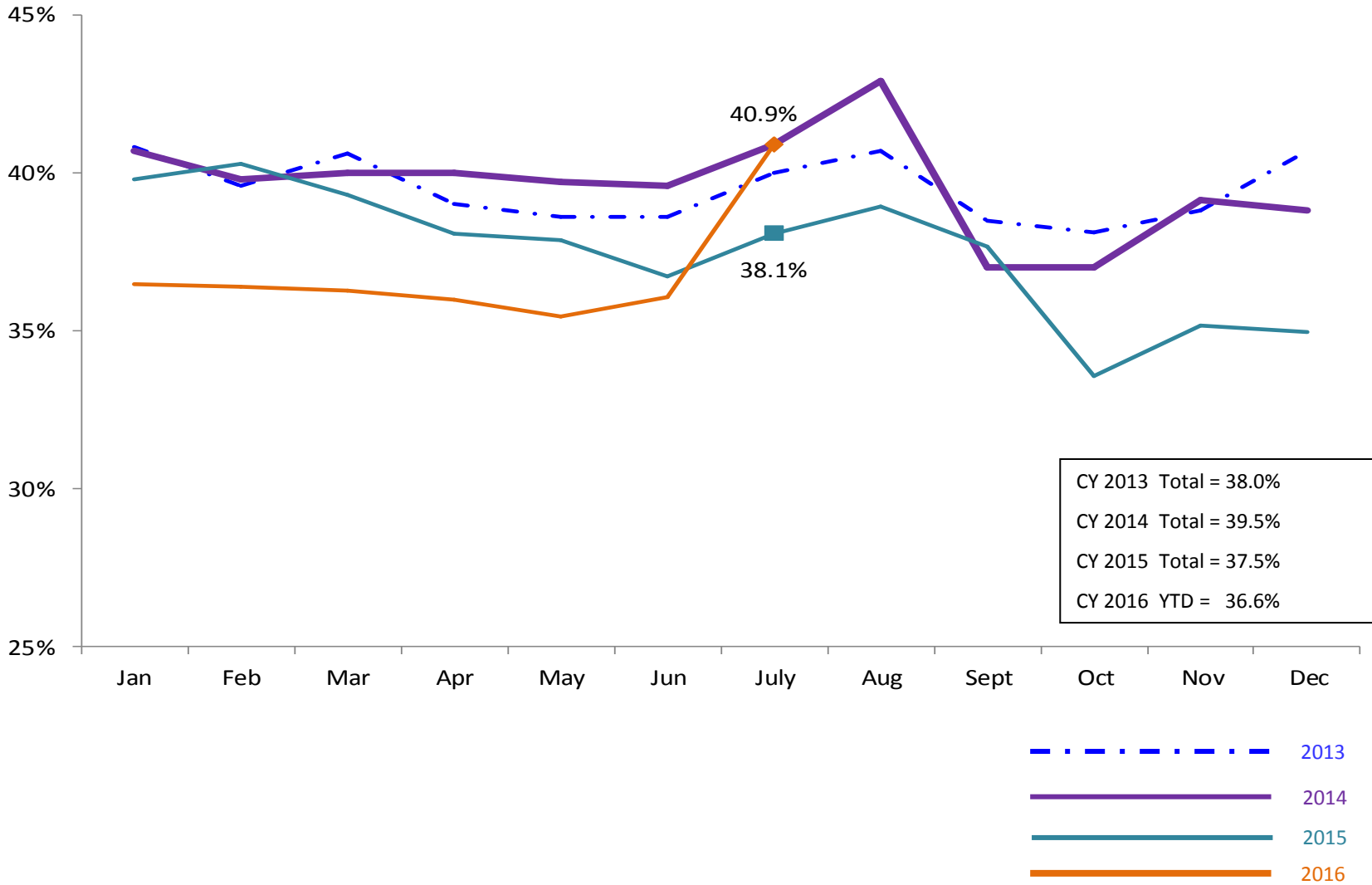


CY 2013 Total = 55,079
 CY 2014 Total = 55,773
 CY 2015 Total = 54,680
 CY 2016 YTD = 41,235



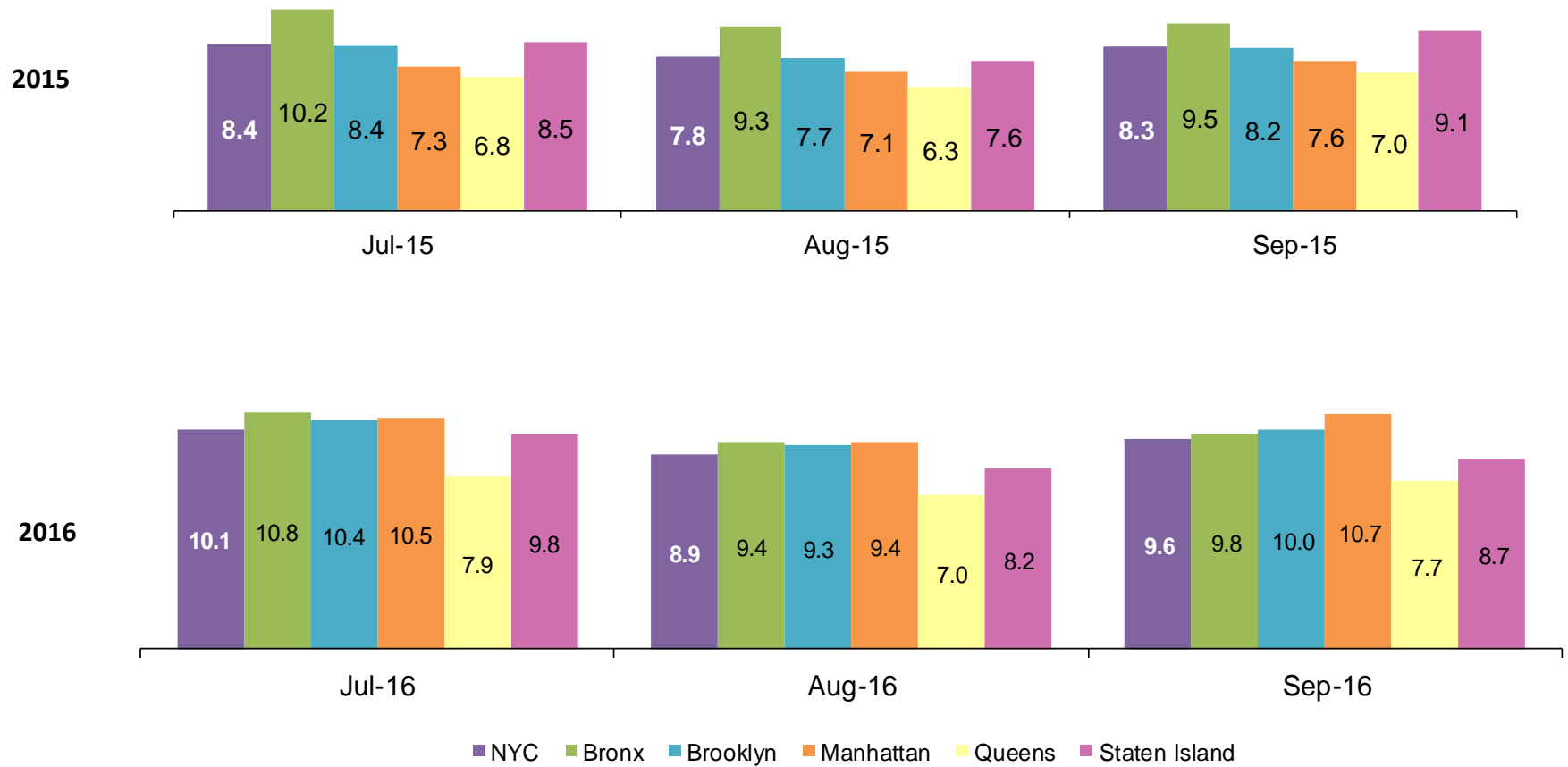
SCR Investigation Indication Rate

January 2012 – July 2016



Average P/D Combined Caseload*

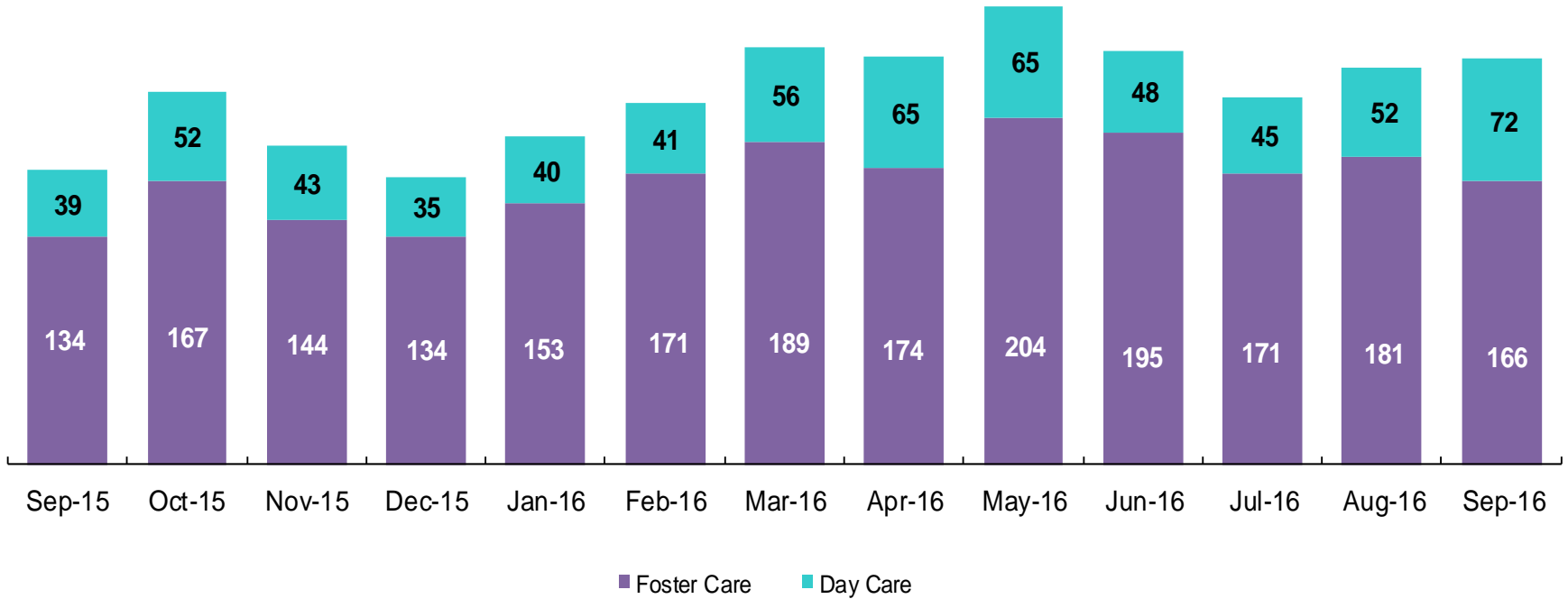
July 2015 – September 2015 & July 2016 – September 2016



* Caseloads are of protective/diagnostic caseworkers only and exclude the caseloads carried by Level I and Level II Supervisors.

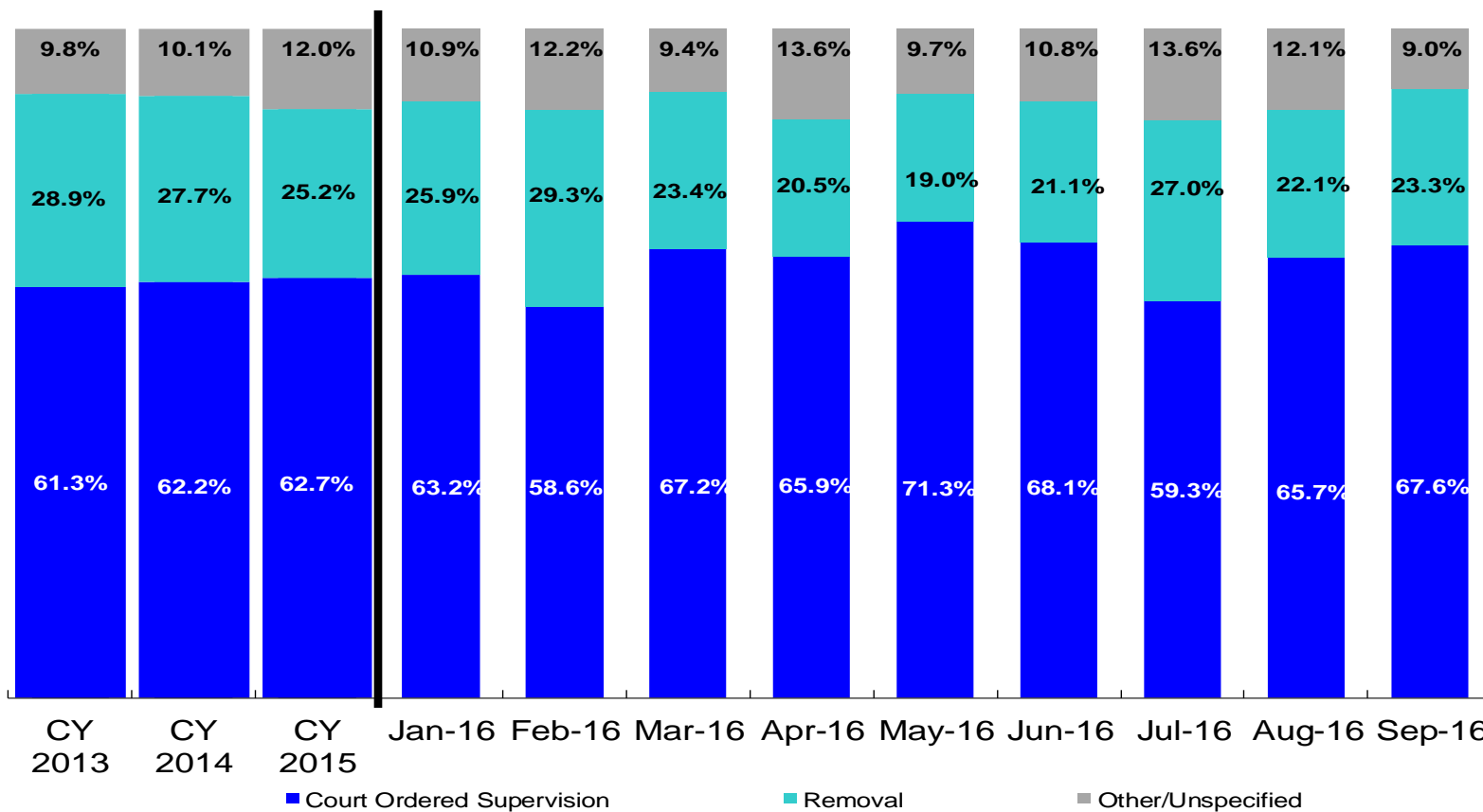
OSI Investigations by Program

September 2015 – September 2016



	Sep 2015	Oct 2015	Nov 2015	Dec 2015	Jan 2016	Feb 2016	Mar 2016	Apr 2016	May 2016	Jun 2016	Jul 2016	Aug 2016	Sep 2016
Number of Investigations	173	219	187	169	193	212	245	239	269	243	216	233	238

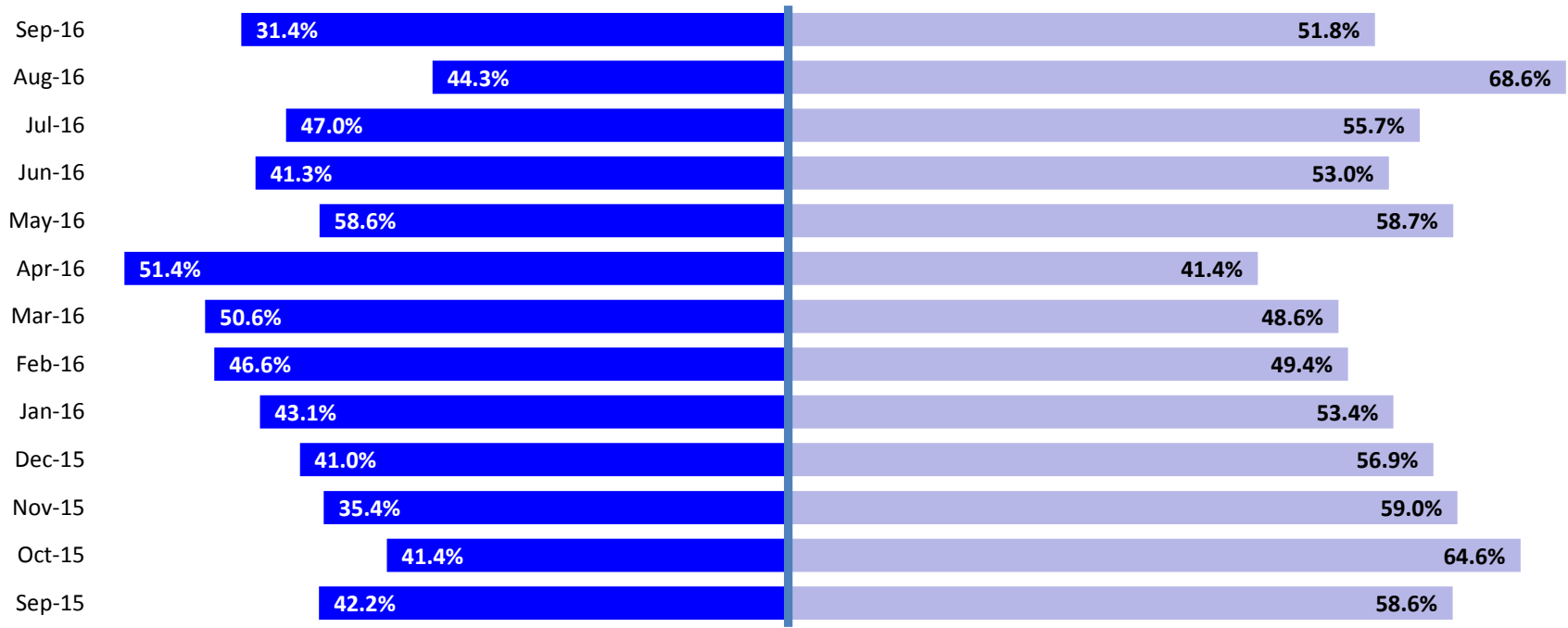
Article 10 Total Filings & Filing Outcomes, CY 2013 – September 2016



	CY 2013	CY 2014	CY 2015	Jan 2016	Feb 2016	Mar 2016	Apr 2016	May 2016	Jun 2016	Jul 2016	Aug 2016	Sep 2016
Article 10 Filings	9,318	9,900	10,257	737	830	890	883	790	868	777	922	853

Note: The category "Other/Unspecified" includes released with no supervision, no order issued and no outcome specified. Outcomes of cases heard the next day are not captured in this report

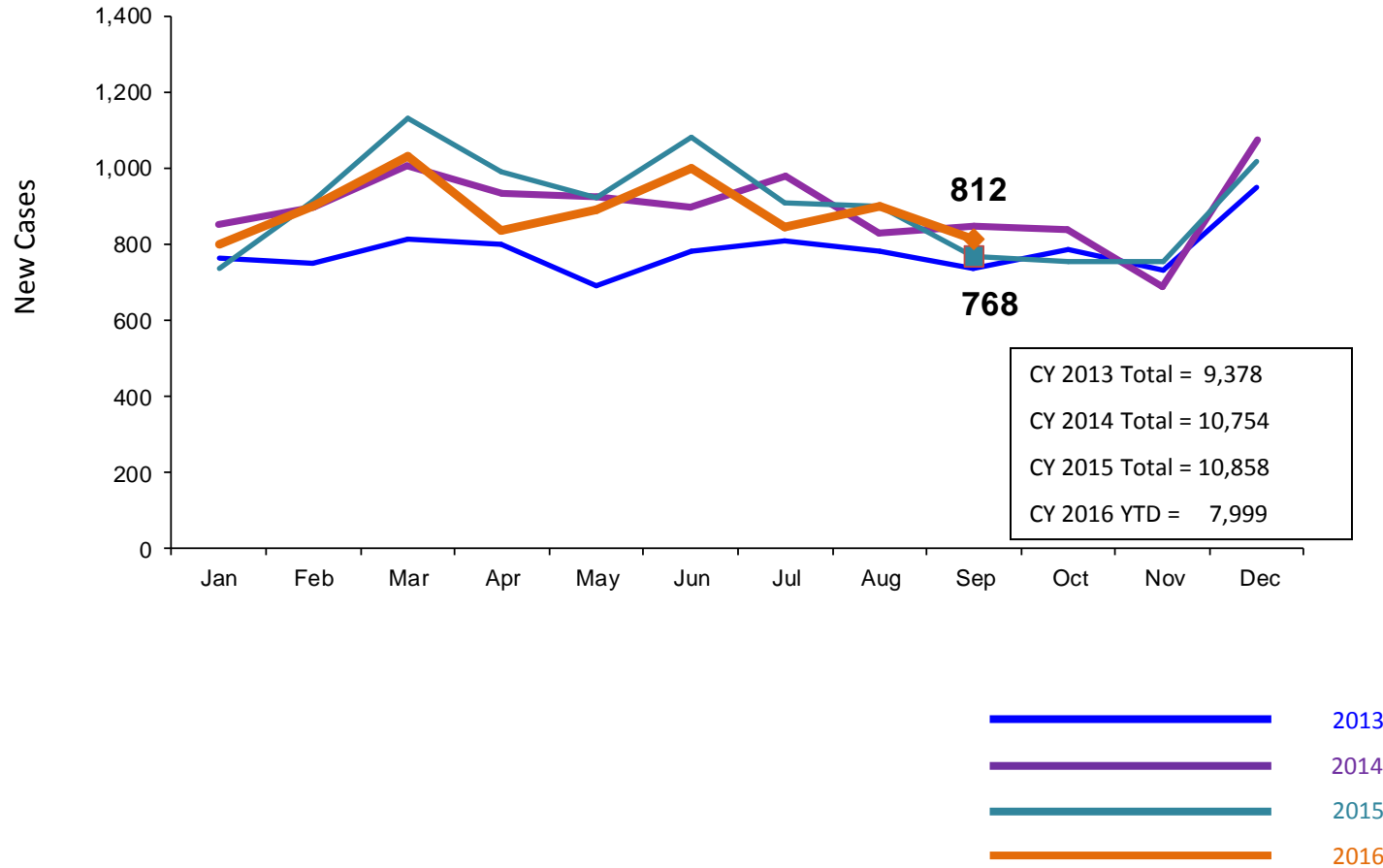
Article 10 Filing Removals, September 2015 – September 2016



■ Pre-Filing Emergency Removals (court approved at initial hearing) ■ Post-Filing Removals (court ordered at initial hearing)

	Sep 2015	Oct 2015	Nov 2015	Dec 2015	Jan 2016	Feb 2016	Mar 2016	Apr 2016	May 2016	June 2016	July 2016	Aug 2016	Sep 2016
Number of Removals	174	178	166	195	191	243	208	181	150	183	210	204	199

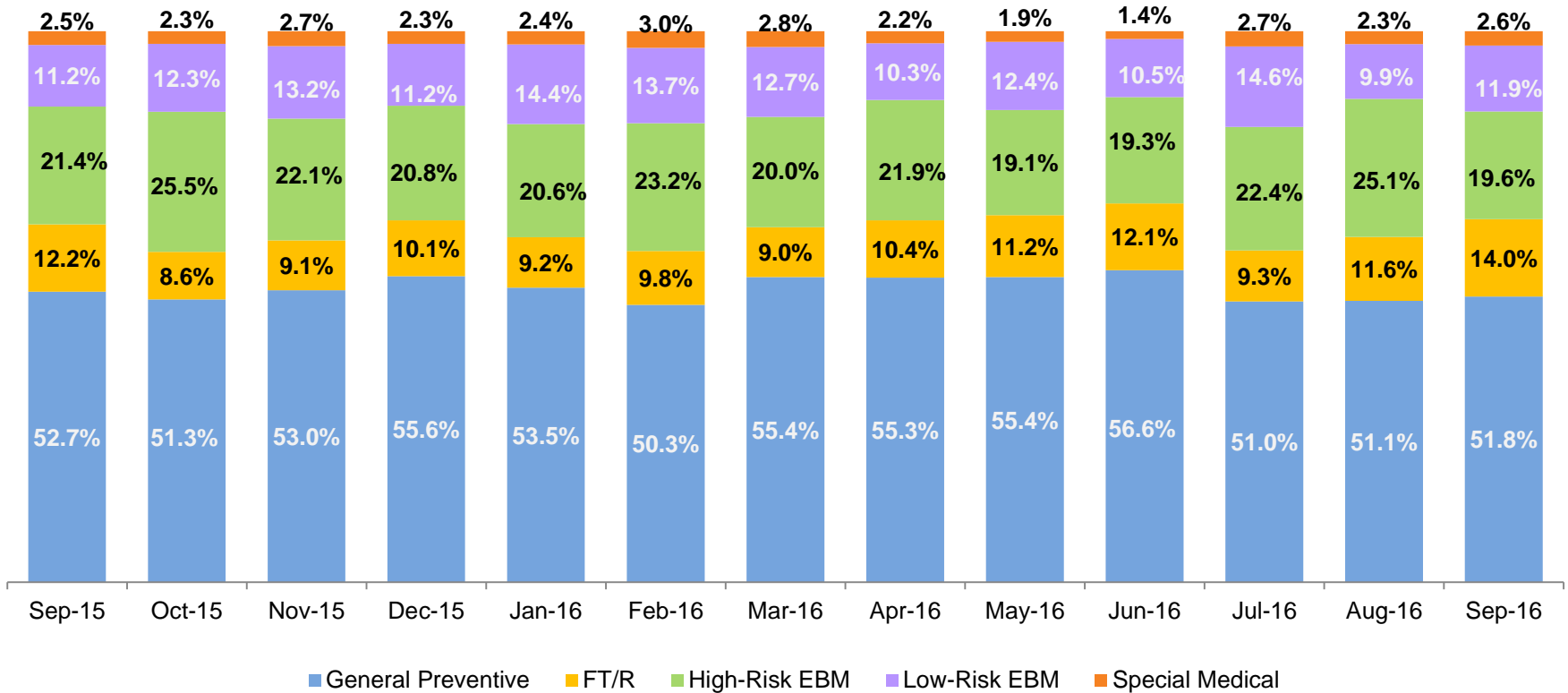
New Child Welfare Preventive Cases* January 2013 – September 2016



*Notes: 1) New preventive cases do not include cases transferred from one preventive program to another. 2) See Pages 33 and 34 of the Appendix for supporting data.

New Child Welfare Preventive Cases by Program Type *

September 2015 – September 2016

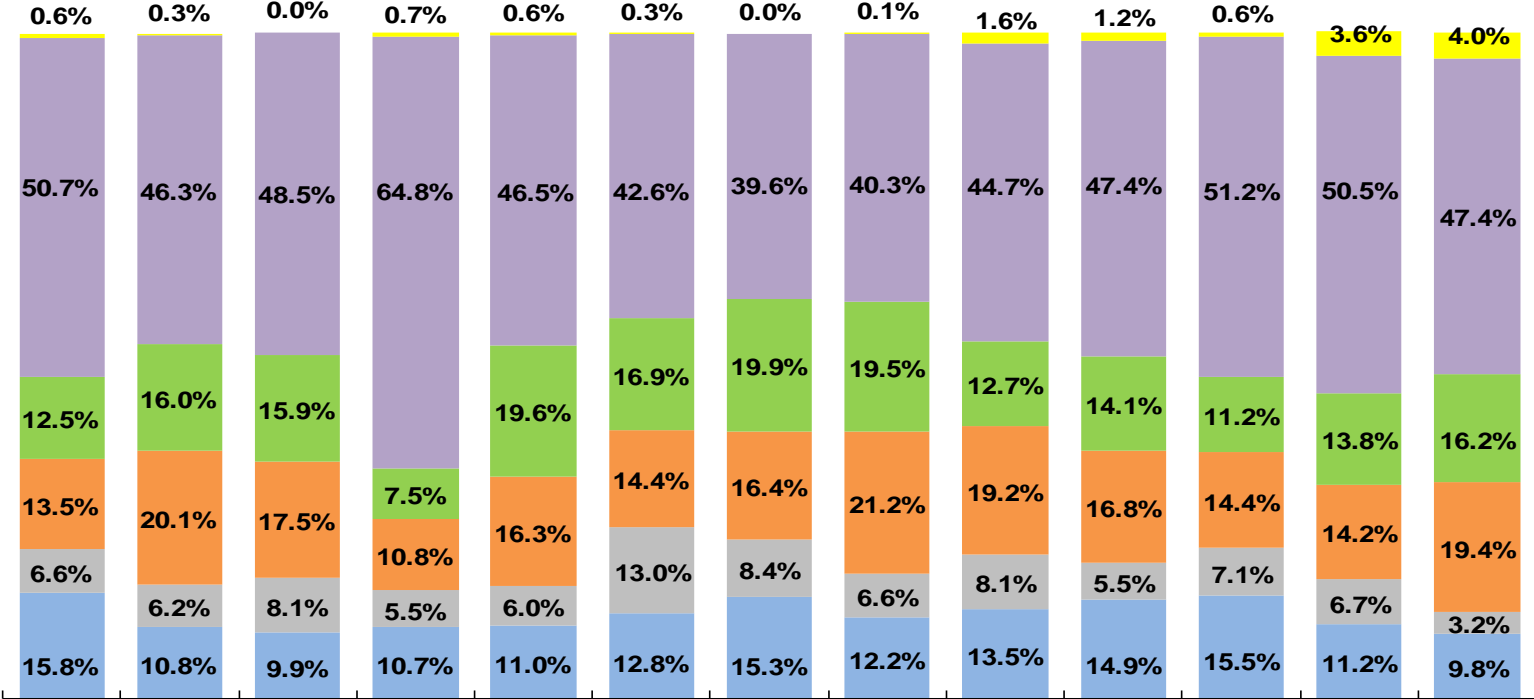


	Sep 2015	Oct 2015	Nov 2015	Dec 2015	Jan 2016	Feb 2016	Mar 2016	Apr 2016	May 2016	June 2016	July 2016	Aug 2016	Sep 2016
Number of New Preventive Cases	768	754	751	1015	797	900	1029	836	890	996	842	897	812

* New preventive cases exclude cases transferred from one preventive program to another.

Average Pre-Placement Residential Monthly Population

September 2015 – September 2016



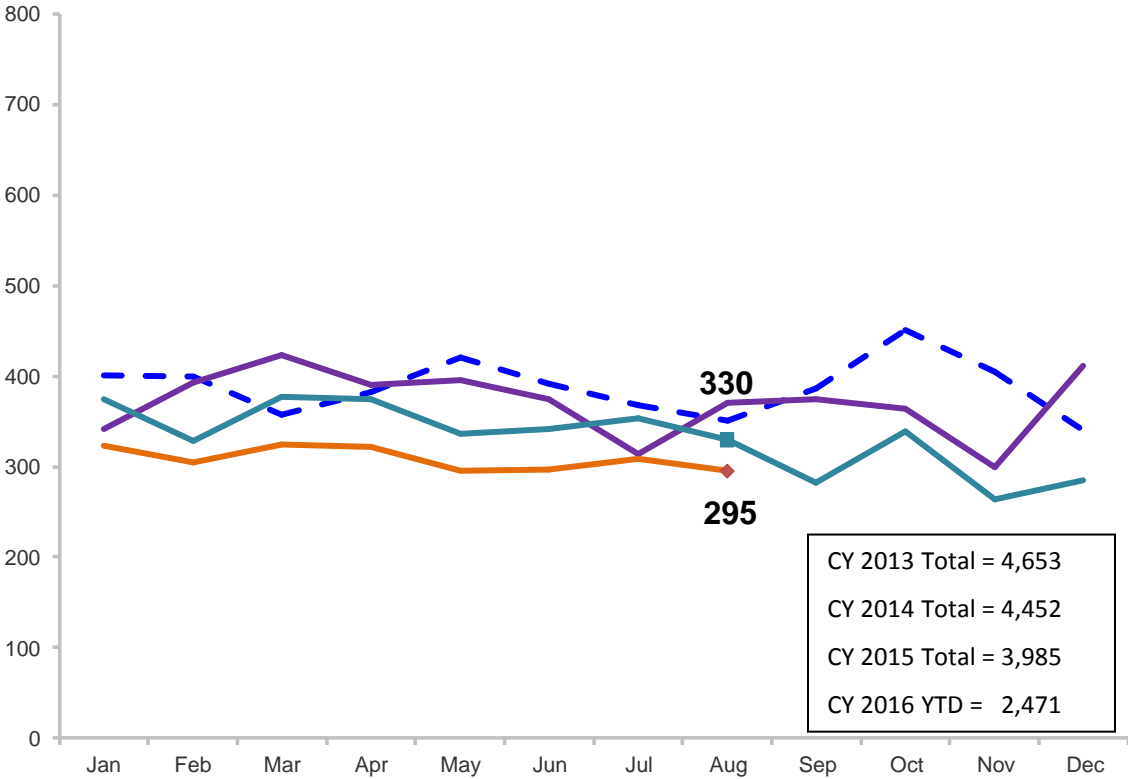
Sep-15 Oct-15 Nov-15 Dec-15 Jan-16 Feb-16 Mar-16 Apr-16 May-16 Jun-16 Jul-16 Aug-16 Sep-16

■ Newborn - 3 years old ■ 4-6 years old ■ 7-10 years old ■ 11-13 years old ■ 14-18 years old ■ >=19 yrs

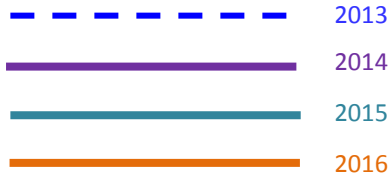
	Sep 2015	Oct 2015	Nov 2015	Dec 2015	Jan 2016	Feb 2016	Mar 2016	Apr 2016	May 2016	Jun 2016	Jul 2016	Aug 2016	Sep 2016
Average Number of Children	36	45	40	40	46	45	49	53	34	40	50	56	54

Total Monthly Placements

January 2013 – August 2016

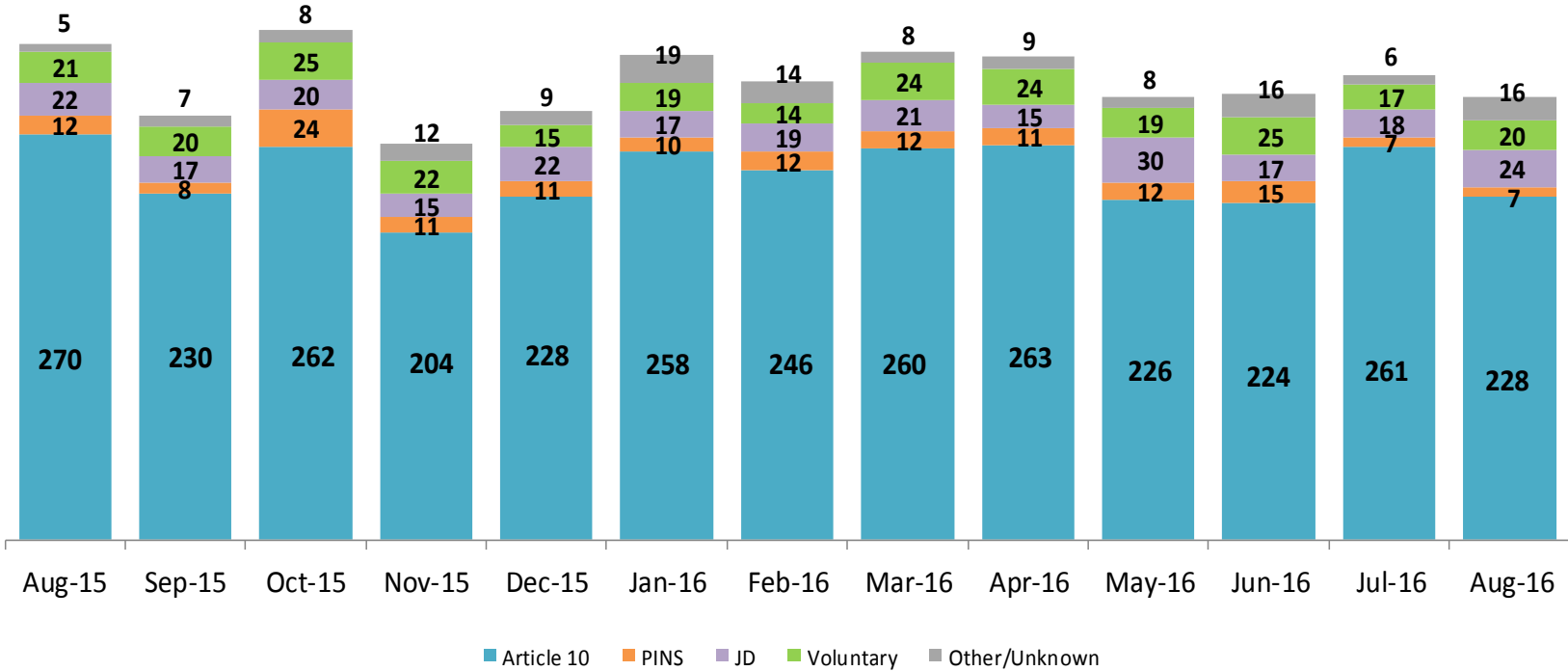


CY 2013 Total = 4,653
CY 2014 Total = 4,452
CY 2015 Total = 3,985
CY 2016 YTD = 2,471



Reason for Initial Placements into Foster Care

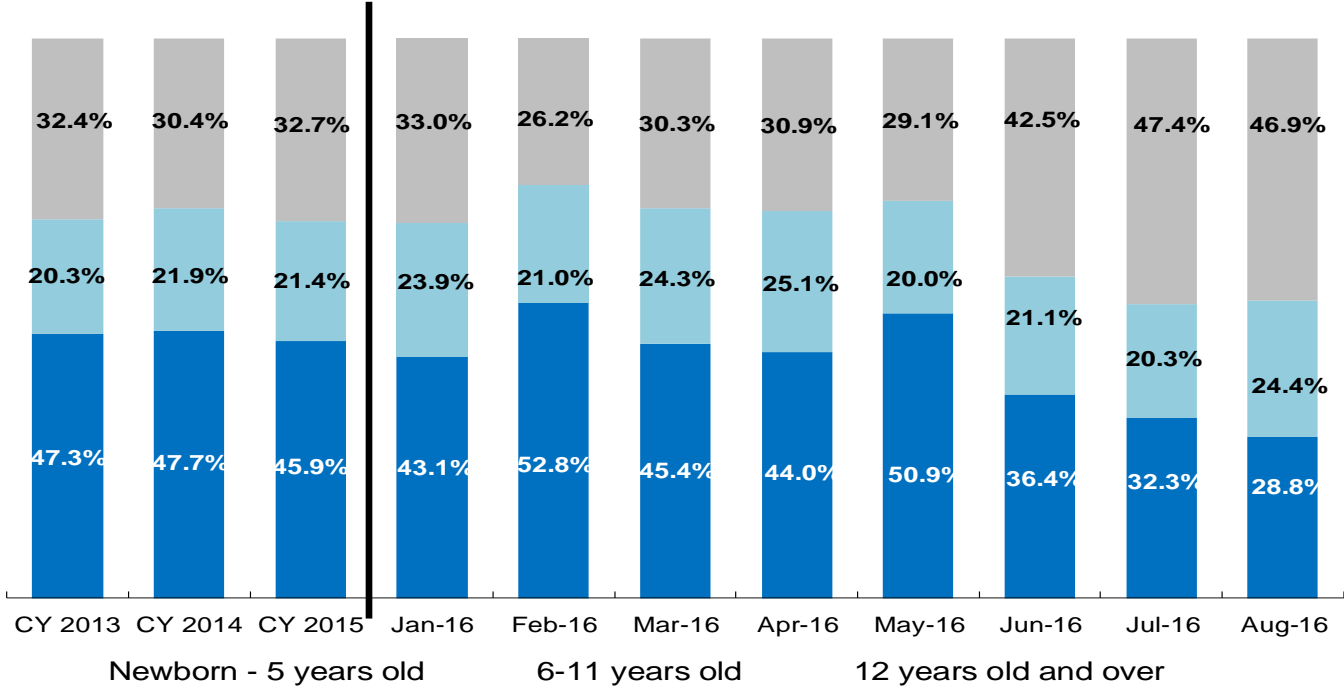
August 2015 – August 2016



	Aug 2015	Sep 2015	Oct 2015	Nov 2015	Dec 2015	Jan 2016	Feb 2016	Mar 2016	Apr 2016	May 2016	Jun 2016	Jul 2016	Aug 2016
Number of Placements	330	282	339	264	285	323	305	325	322	295	297	309	295

Placements* by Age

CY 2013 - August 2016

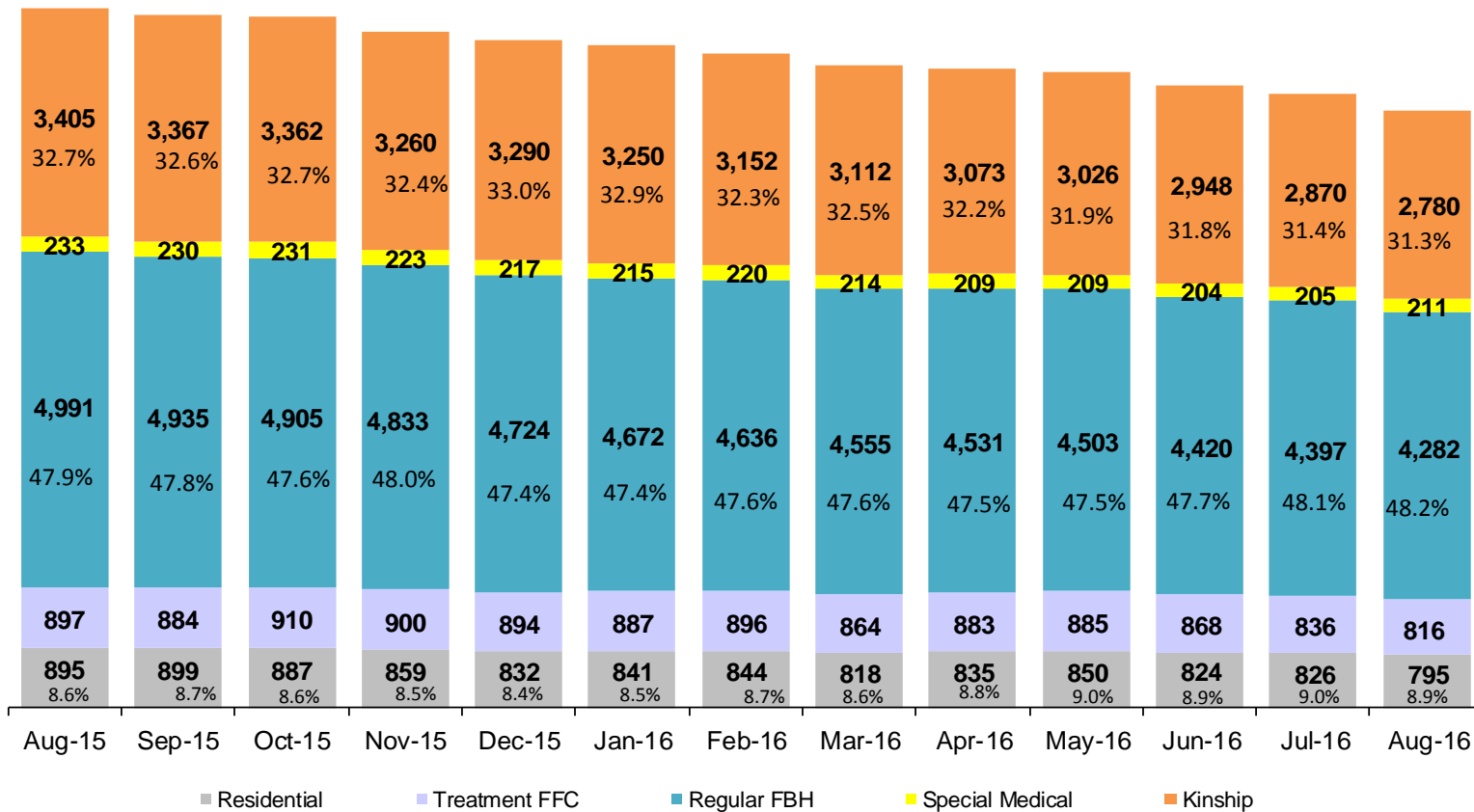


	CY 2013	CY 2014	CY 2015	Jan 2016	Feb 2016	Mar 2016	Apr 2016	May 2016	Jun 2016	Jul 2016	Aug 2016
Placements (without JDs)	4,283	4,160	3,760	306	286	304	307	265	280	291	271

*Excludes JD placements.

Children in Foster Care *

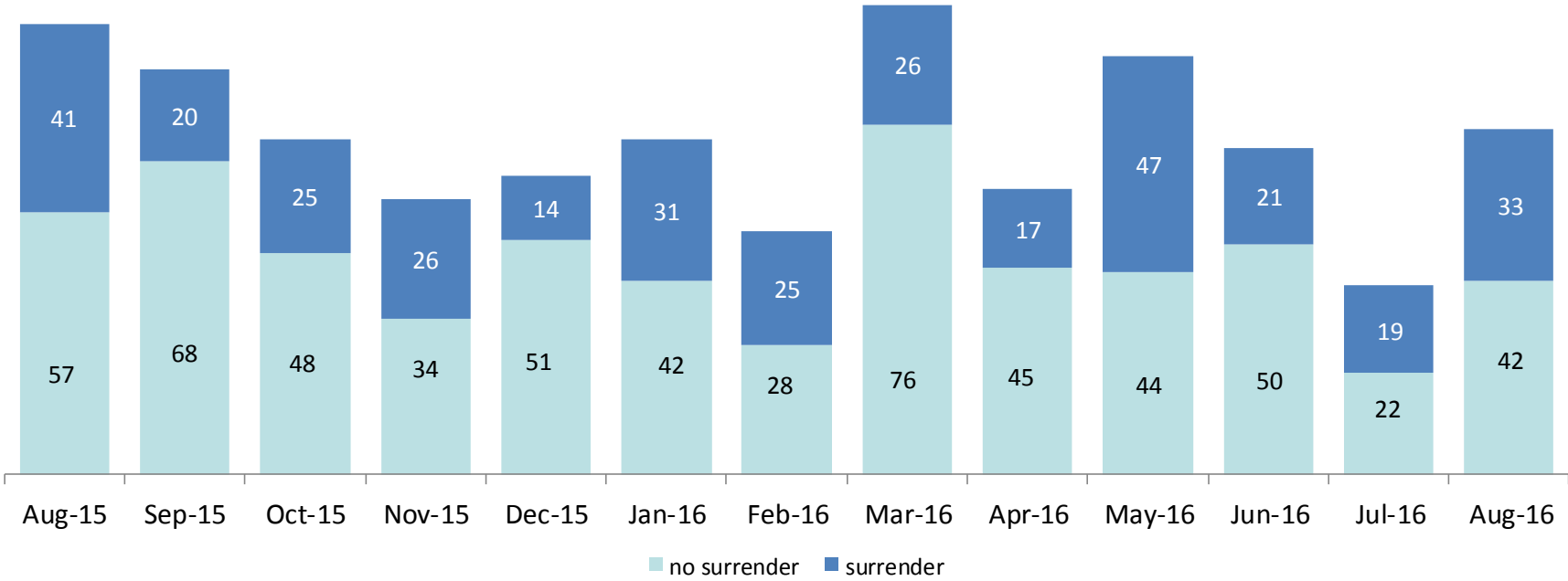
August 2015 – August 2016 (end of month)



	Aug 2015	Sep 2015	Oct 2015	Nov 2015	Dec 2015	Jan 2016	Feb 2016	Mar 2016	Apr 2016	May 2016	Jun 2016	Jul 2016	Aug 2016
Number in Foster Care	10,421	10,315	10,295	10,075	9,957	9,865	9,748	9,563	9,531	9,473	9,264	9,134	8,884

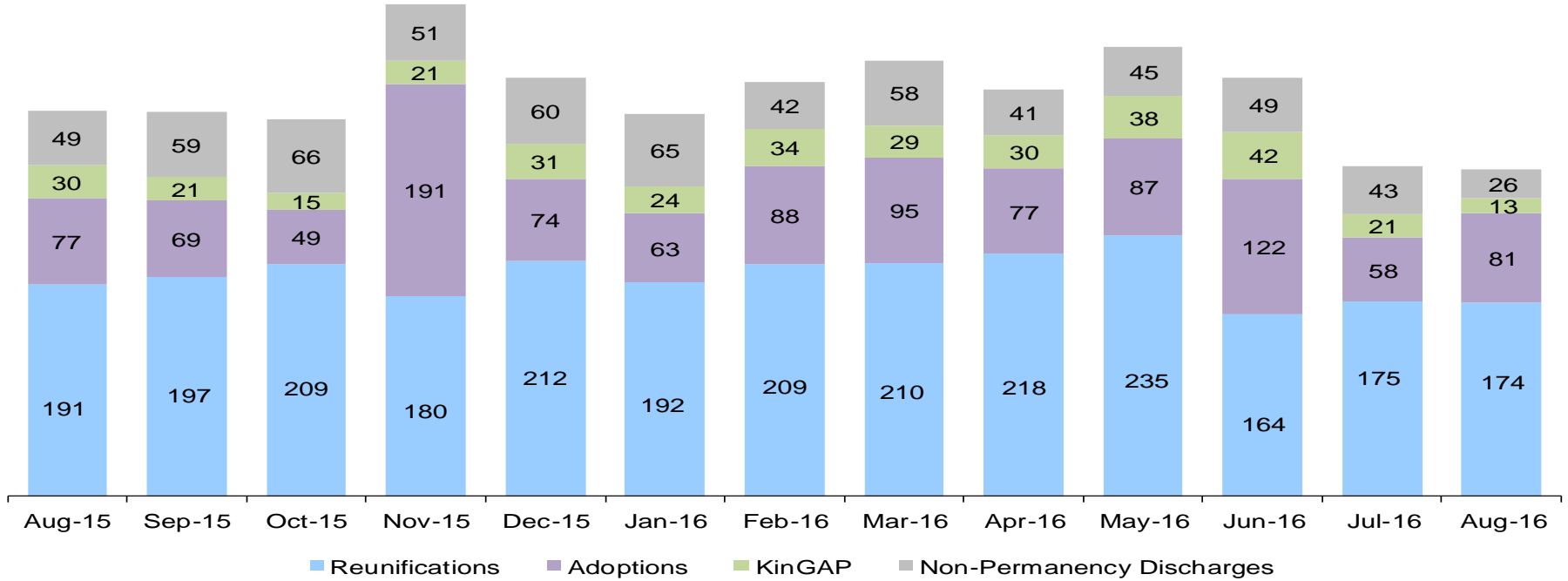
*Excludes JD placements and includes children in 24 hour care and approximately 200 young children who are living in foster homes or residential care facilities with their mothers who are in foster care (8D children).

Children Freed for Adoption, Surrender by at Least One Parent August 2015 – August 2016



	Aug 2015	Sep 2015	Oct 2015	Nov 2015	Dec 2015	Jan 2016	Feb 2016	Mar 2016	Apr 2016	May 2016	Jun 2016	Jul 2016	Aug 2016
Number Freed for Adoption	82	98	87	73	63	73	53	102	62	91	71	41	75

Permanency and Non-Permanency* Discharges from Foster Care** August 2015 – August 2016



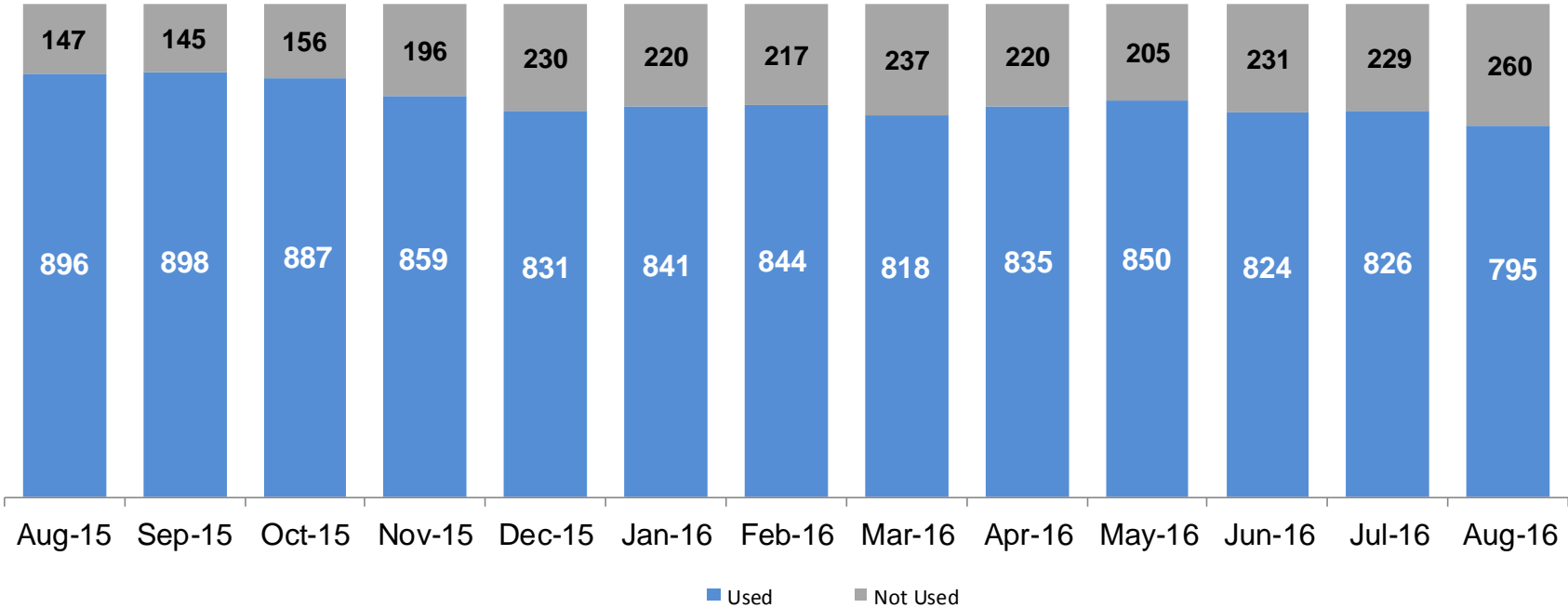
	Aug 2015	Sep 2015	Oct 2015	Nov 2015	Dec 2015	Jan 2016	Feb 2016	Mar 2016	Apr 2016	May 2016	Jun 2016	Jul 2016	Aug 2016
Number of Discharges	347	346	339	443	377	344	373	392	366	405	377	297	294

*Non-permanency discharges include AWOL, APPLA , other discharge destinations such as psychiatric institutions and correctional facilities and discharges with unspecified destinations.

**Excludes discharges of youth who entered care as a JD.

Residential Care Capacity and Utilization

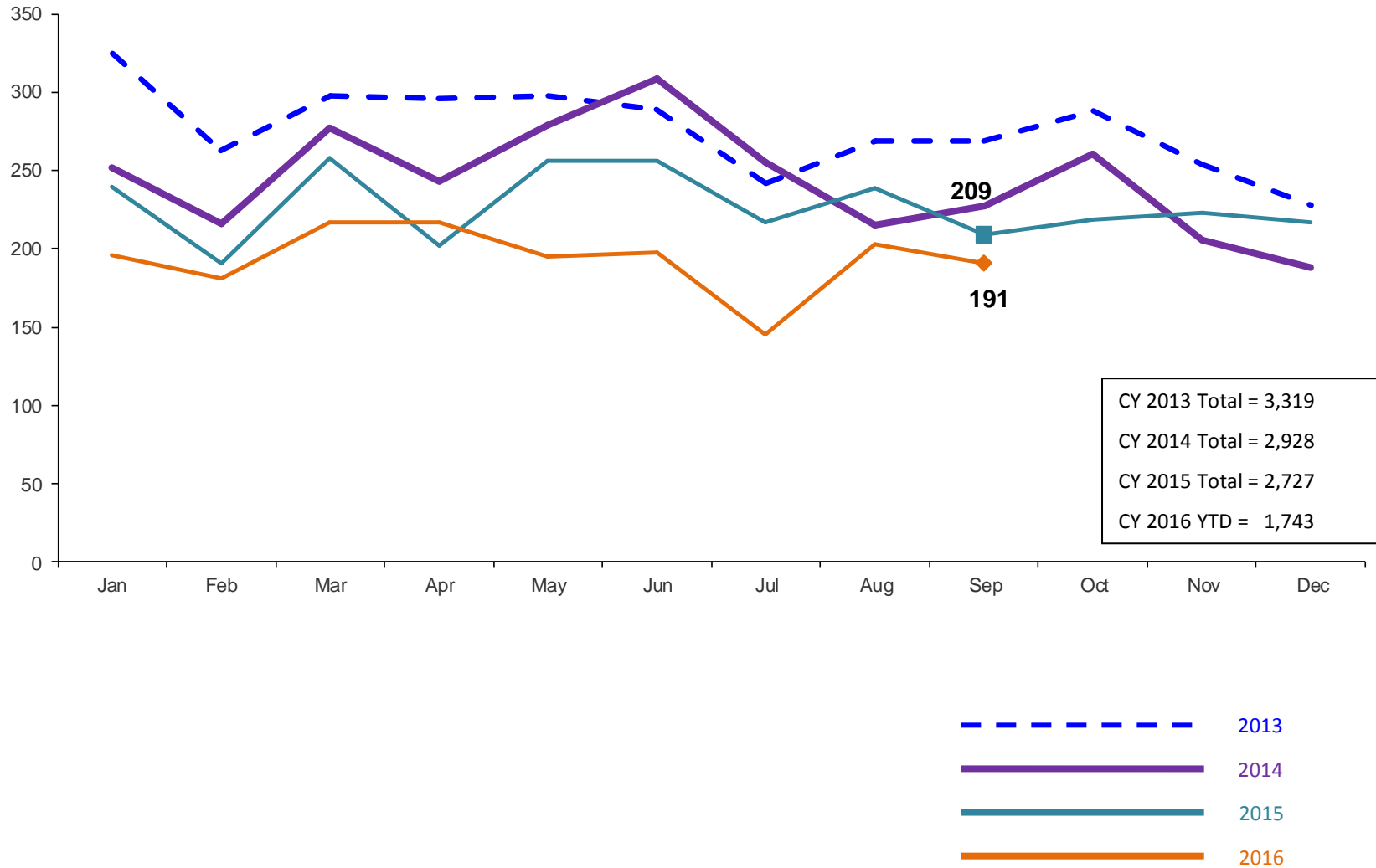
August 2015 – August 2016



	Aug 2015	Sep 2015	Oct 2015	Nov 2015	Dec 2015	Jan 2016	Feb 2016	Mar 2016	Apr 2016	May 2016	Jun 2016	Jul 2016	Aug 2016
Capacity	1,043	1,043	1,043	1,055	1,061	1,061	1,061	1,055	1,055	1,055	1,055	1,055	1,055

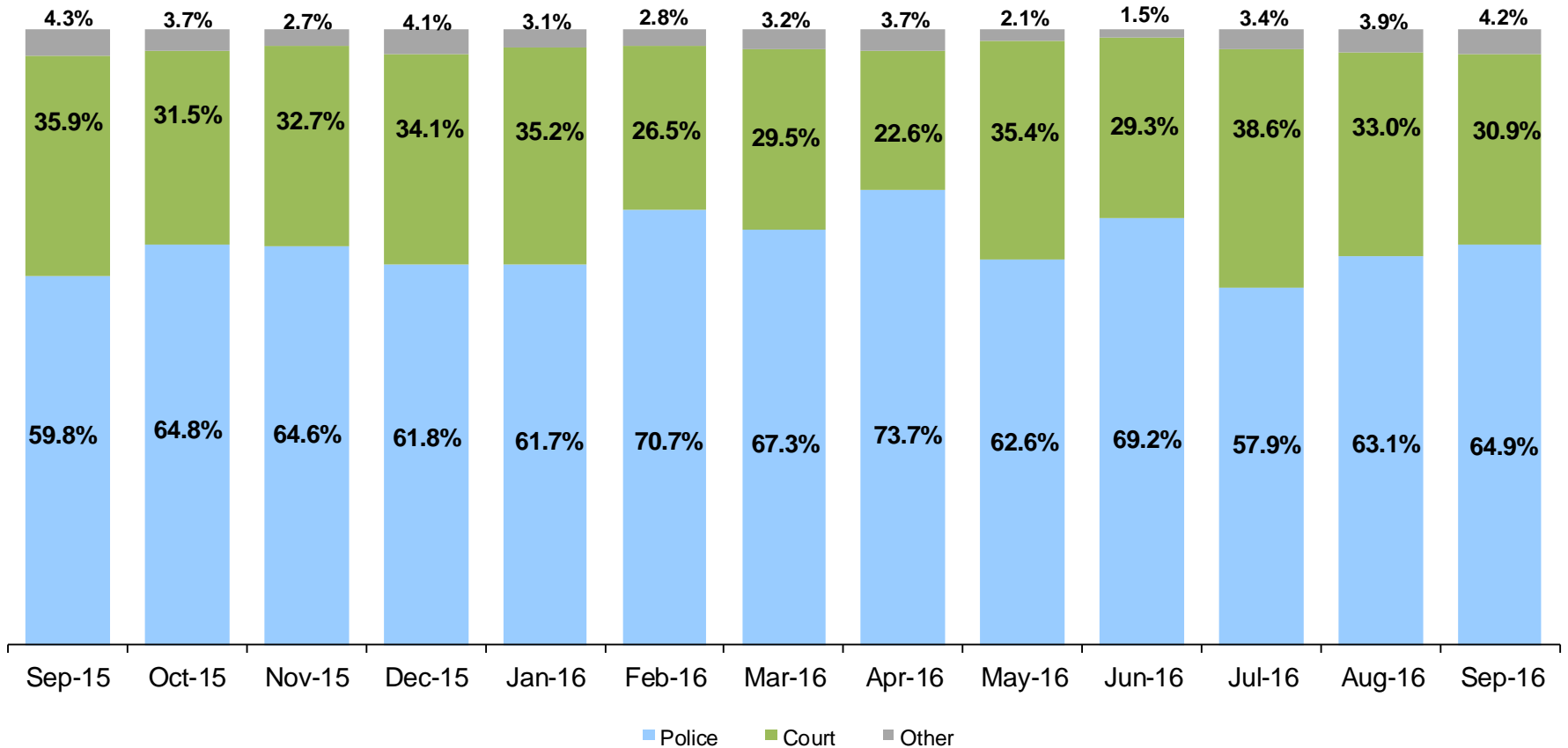
Total Monthly Admissions to Detention

January 2013 – September 2016 (Monthly Total)



Admit Authority on Admissions

September 2015 – September 2016 (Monthly Total)



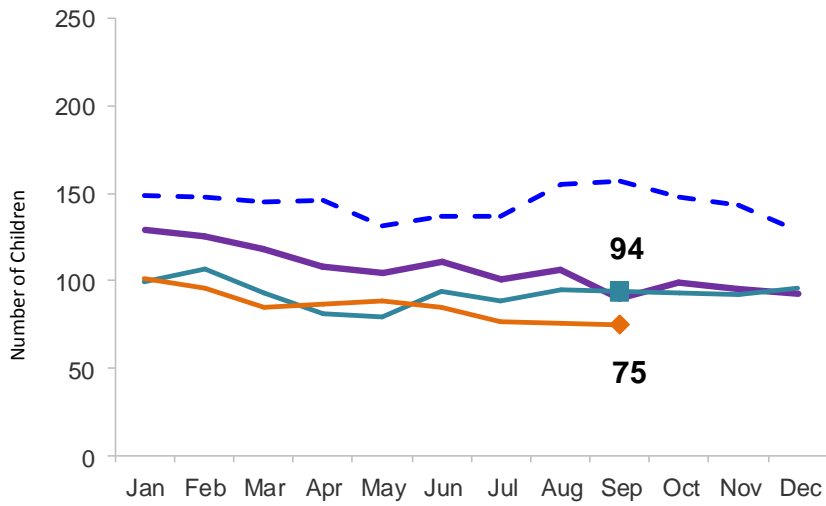
	Sep 2015	Oct 2015	Nov 2015	Dec 2015	Jan 2016	Feb 2016	Mar 2016	Apr 2016	May 2016	Jun 2016	Jul 2016	Aug 2016	Sep 2016
Number of Admissions	209	219	223	217	196	181	217	217	195	198	145	203	191

Note: Other Admit Authority includes the Sheriff Department, Department of Corrections and ACS.

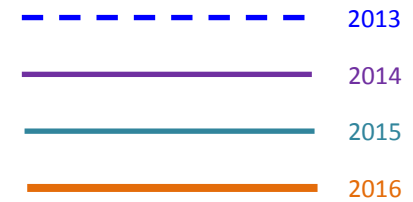
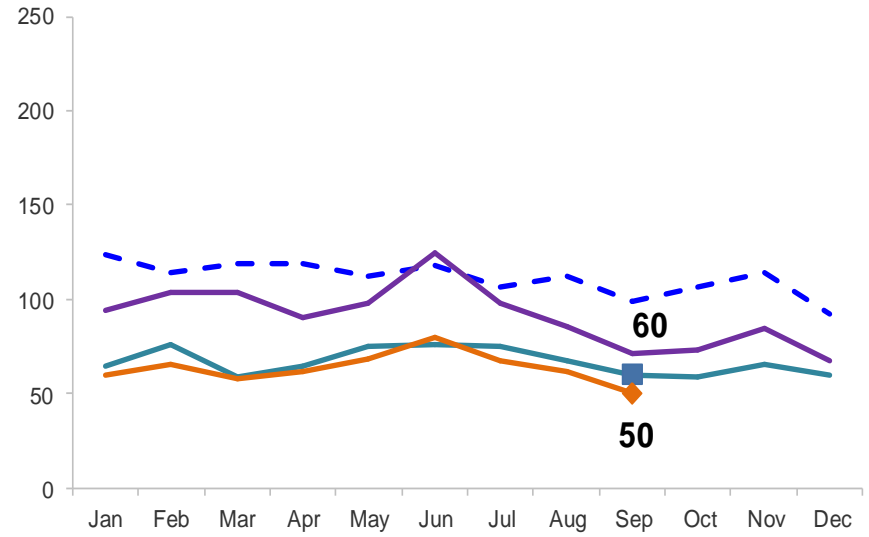
Monthly Average Daily Population

January 2013 – September 2016

Secure Detention

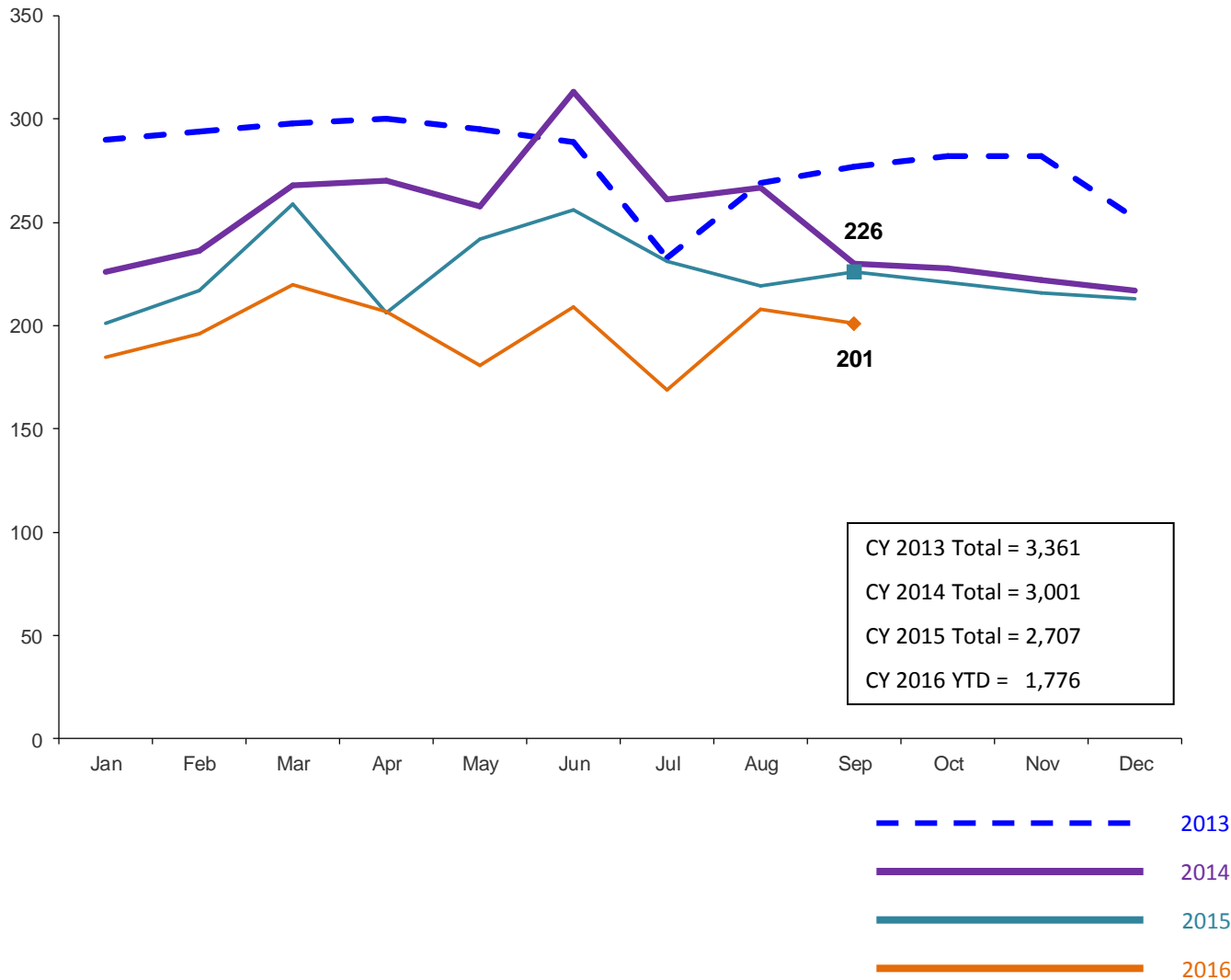


Non-Secure Detention



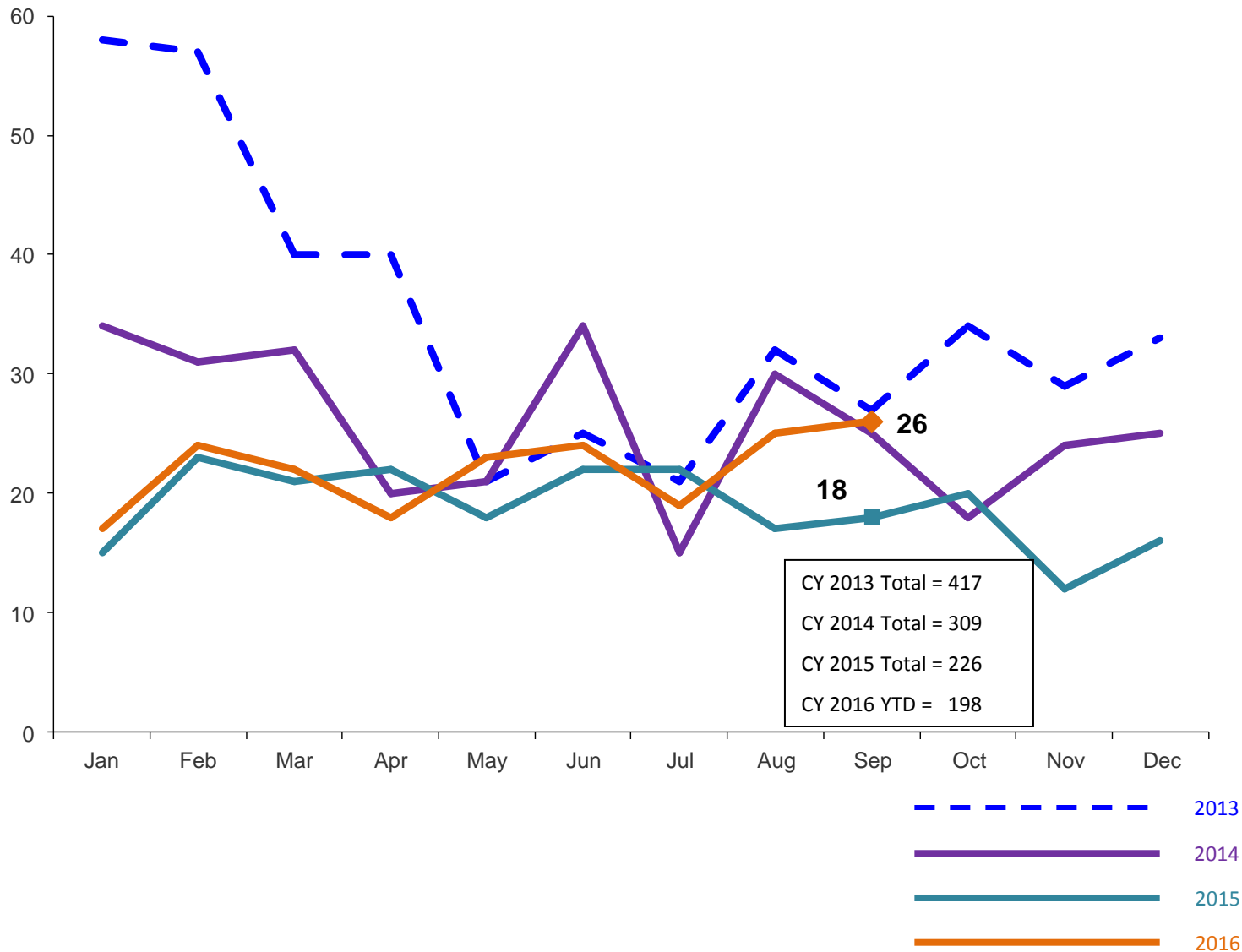
Total Monthly Releases from Detention

January 2013 – September 2016 (Monthly Total)



Close to Home Intakes*

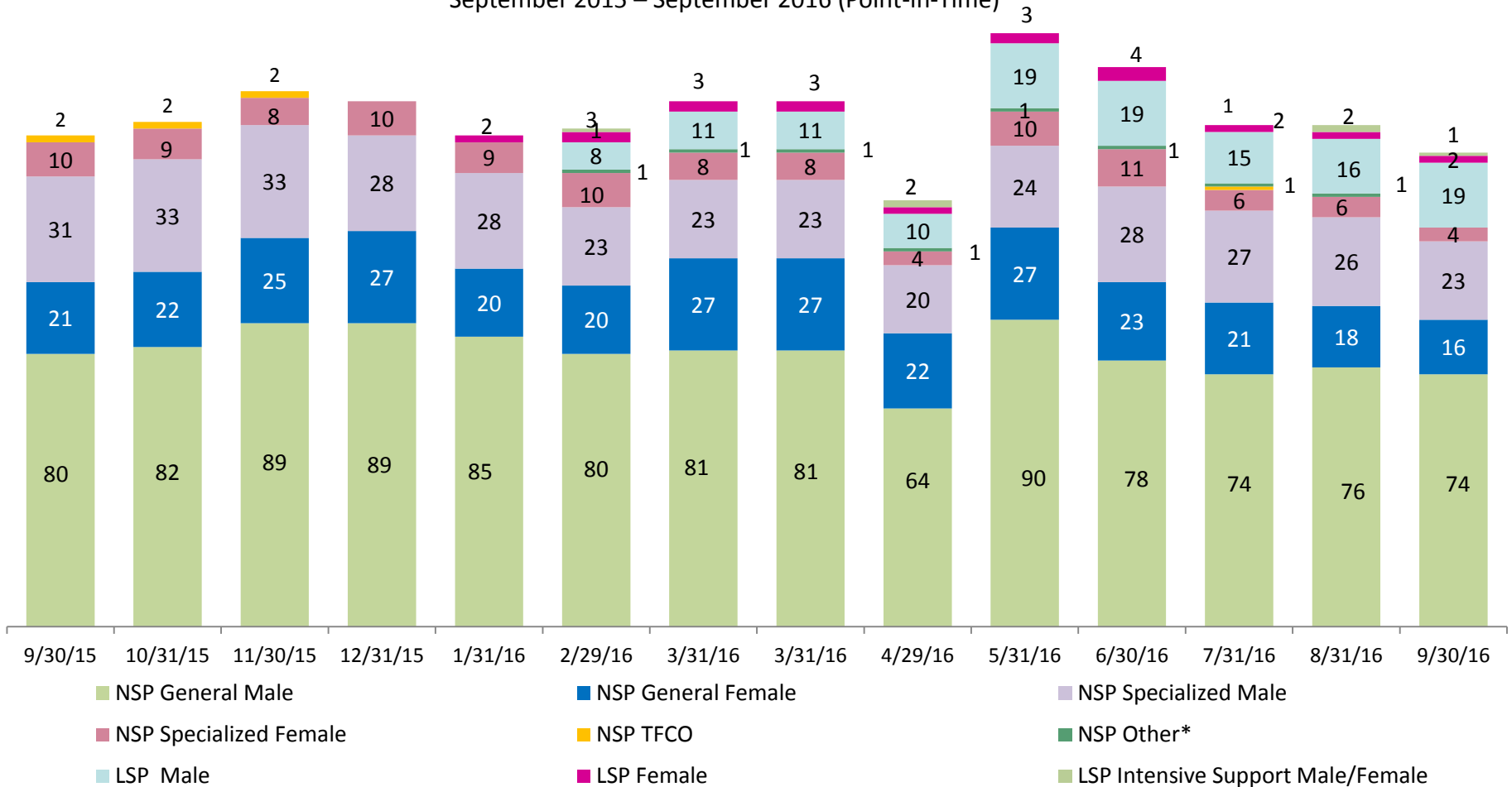
January 2013 – September 2016 (Monthly Total)



*Beginning in December 2015 Close to Home Intakes include LSP as well as NSP.

Close to Home Placement, in 24-hour Care

September 2015 – September 2016 (Point-in-Time)

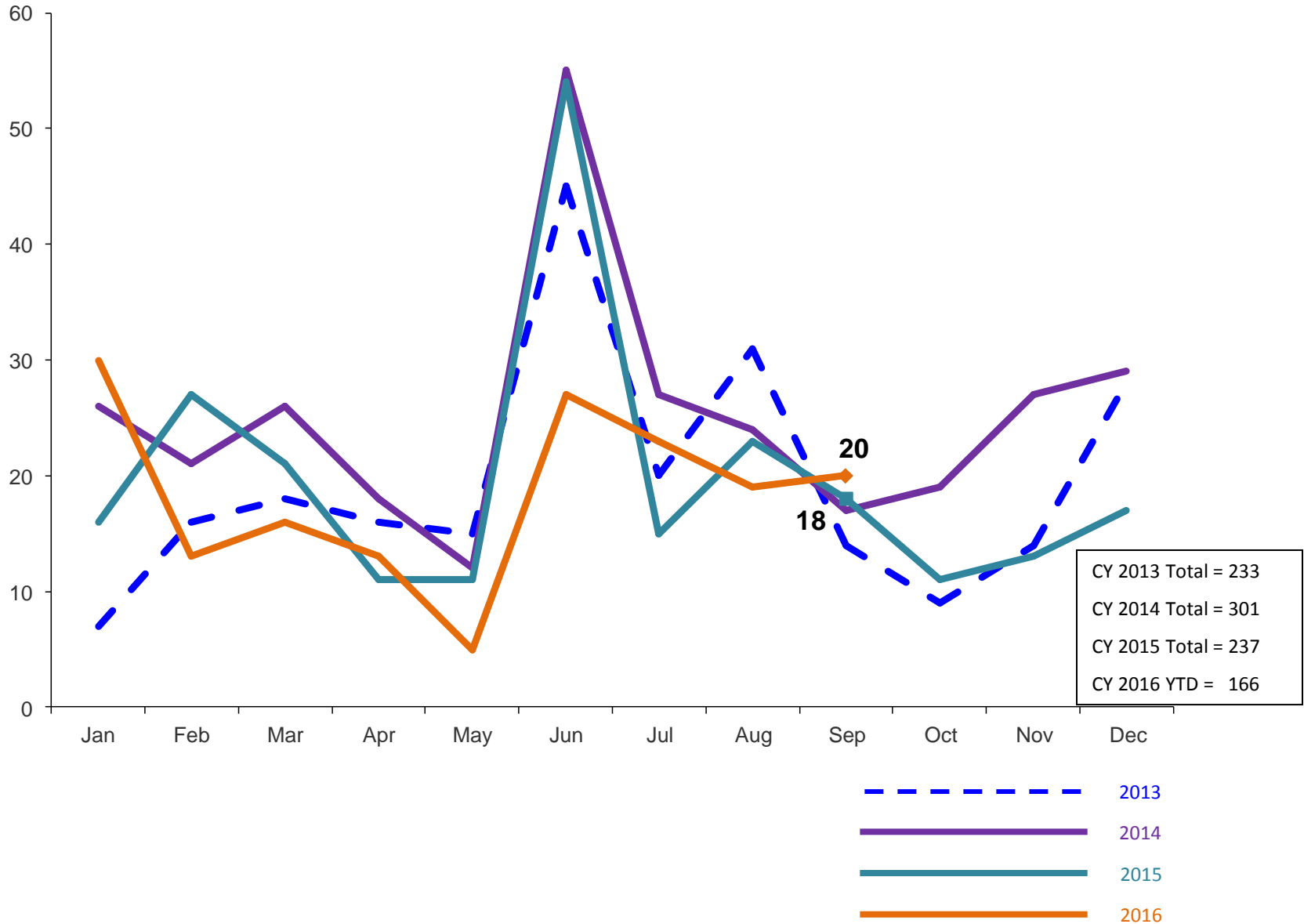


Number in Placement													
	9/30/15	10/31/15	11/30/15	12/31/15	1/31/16	2/29/16	3/31/16	4/29/16	5/31/16	6/30/16	7/31/16	8/31/16	9/30/16
NSP	144	148	157	154	142	134	140	111	152	141	130	127	117
LSP	0	0	0	2	6	12	14	14	22	23	17	20	22

*NSP Other includes youth in child welfare placements.

Releases from Close to Home Placement to Aftercare

February 2013 – September 2016 (Monthly Total)



Appendix

Figure 1: SCR Intakes by Borough, JUL 15 – SEP 15 and JUL 16 – SEP 16

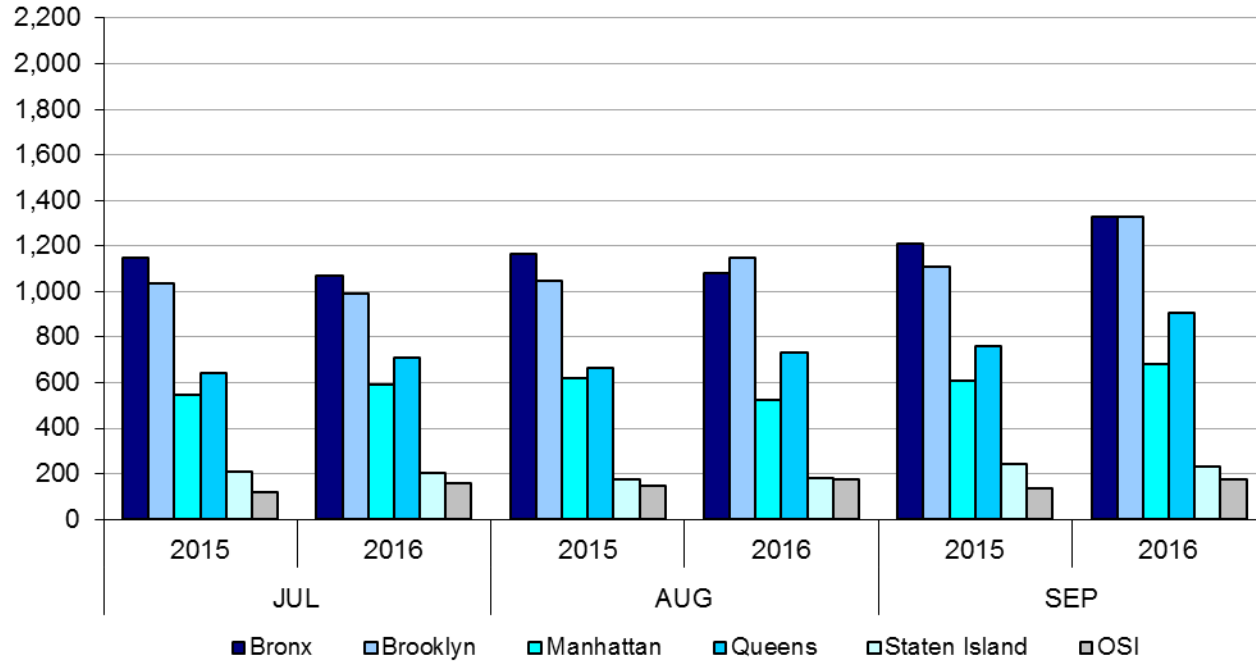


Table 1 - SCR Intake Changes by Borough, JUL 15 – SEP 15 and JUL 16 – SEP 16

Month	Year	Bronx	Brooklyn	Manhattan	Queens	Staten Island	OSI	Other	Total
JUL	2015	1,148	1,034	546	641	209	121	124	3,823
	2016	1,071	992	590	712	203	157	135	3,860
	% Change	-6.7%	-4.1%	8.1%	11.1%	-2.9%	29.8%	8.9%	1.0%
AUG	2015	1,164	1,048	620	662	175	146	124	3,939
	2016	1,083	1,146	526	734	179	177	154	3,999
	% Change	-7.0%	9.4%	-15.2%	10.9%	2.3%	21.2%	24.2%	1.5%
SEP	2015	1,210	1,107	610	762	245	138	149	4,221
	2016	1,329	1,328	680	908	230	173	168	4,816
	% Change	9.8%	20.0%	11.5%	19.2%	-6.1%	25.4%	12.8%	14.1%
Total	2015	3,522	3,189	1,776	2,065	629	405	397	11,983
	2016	3,483	3,466	1,796	2,354	612	507	457	12,675
	% Change	-1.1%	8.7%	1.1%	14.0%	-2.7%	25.2%	15.1%	5.8%

Figure 2: Citywide SCR Intakes by Reporter Group, JUL 15 – SEP 15 and JUL 16 – SEP 16

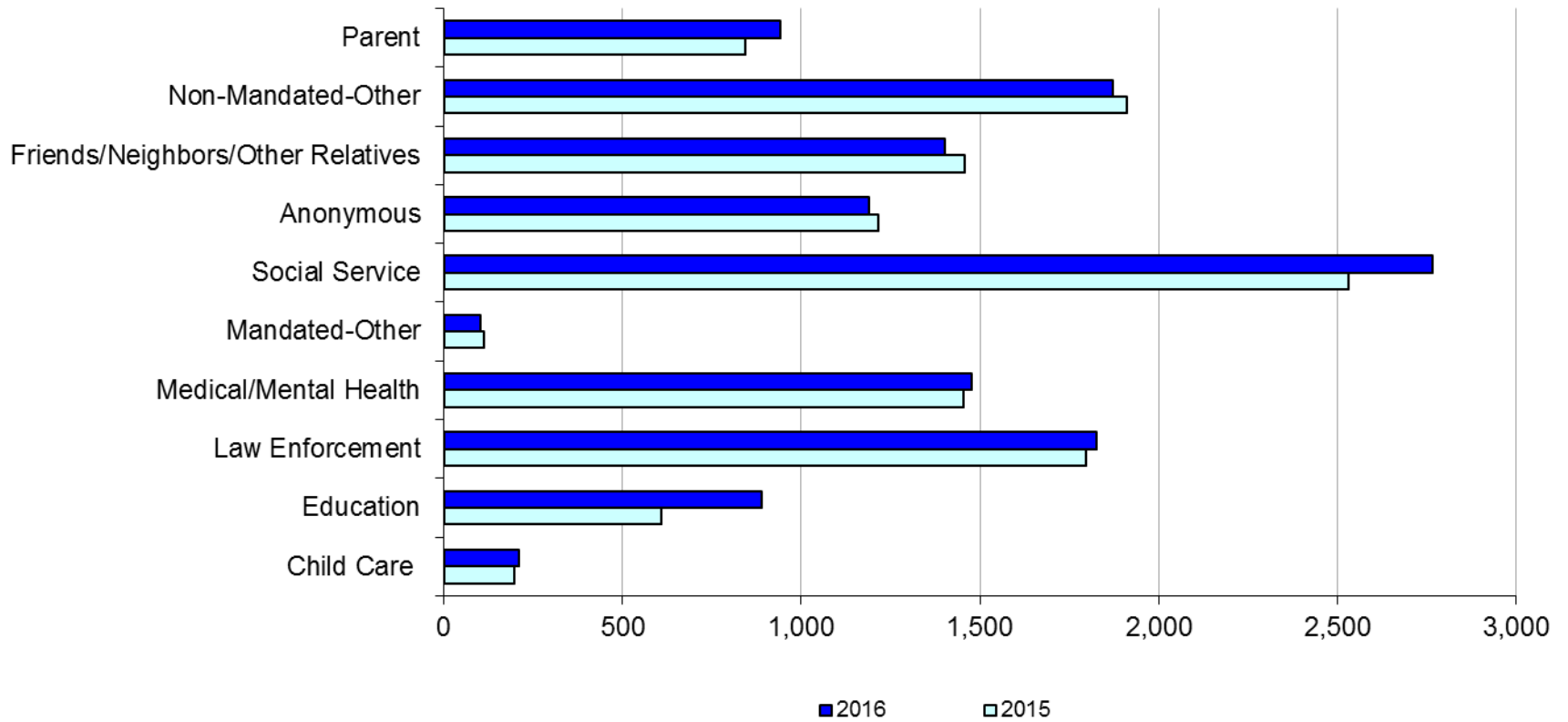
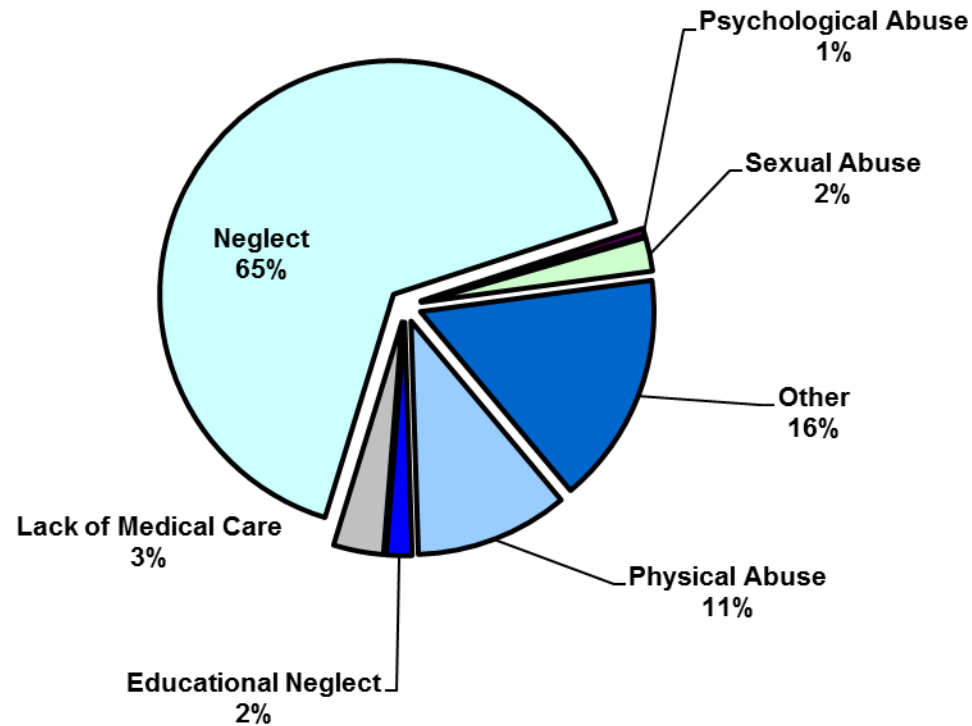


Table 2 - SCR Intakes by Reporter Group, JUL 15 – SEP 15 and JUL 16 – SEP 16

Year	Child Care/ Substitute Care Personnel	Educational Personnel	Law Enforcement	Medical/ Mental Health Personnel	Mandated- Other	Social Service Personnel	Anonymous	Friends/ Neighbors/ Other Relatives	Non- Mandated- Other	Parent	Foster Parent	Total
Bronx												
2015	51	194	457	436	38	738	357	419	615	212	0	3,517
2016	53	260	441	399	35	810	334	395	530	228	0	3,485
% Change	3.9%	34.0%	-3.5%	-8.5%	-7.9%	9.8%	-6.4%	-5.7%	-13.8%	7.5%	--	-0.9%
Brooklyn												
2015	51	163	540	354	24	583	348	415	468	219	1	3,166
2016	47	269	580	379	28	676	334	415	498	242	1	3,469
% Change	-7.8%	65.0%	7.4%	7.1%	16.7%	16.0%	-4.0%	0.0%	6.4%	10.5%	0.0%	9.6%
Manhattan												
2015	31	73	325	222	16	415	180	184	319	102	1	1,868
2016	34	106	307	226	10	389	149	163	284	126	0	1,794
% Change	9.7%	45.2%	-5.5%	1.8%	-37.5%	-6.3%	-17.2%	-11.4%	-11.0%	23.5%	-100.0%	-4.0%
Queens												
2015	24	134	290	268	17	504	201	263	295	142	0	2,138
2016	29	178	295	300	16	536	240	263	332	164	1	2,354
% Change	20.8%	32.8%	1.7%	11.9%	-5.9%	6.3%	19.4%	0.0%	12.5%	15.5%	--	10.1%
Staten Island												
2015	10	25	74	83	1	89	70	117	72	46	0	587
2016	10	54	73	73	3	107	79	92	78	40	2	611
% Change	0.0%	116.0%	-1.4%	-12.0%	200.0%	20.2%	12.9%	-21.4%	8.3%	-13.0%	--	4.1%
OSI												
2015	23	12	27	41	8	69	36	25	102	73	4	420
2016	30	13	31	54	6	110	29	35	97	101	4	510
% Change	30.4%	8.3%	14.8%	31.7%	-25.0%	59.4%	-19.4%	40.0%	-4.9%	38.4%	0.0%	21.4%
Other												
2015	8	8	83	51	8	134	23	35	41	48	0	439
2016	8	10	98	45	5	139	23	40	53	41	0	462
% Change	0.0%	25.0%	18.1%	-11.8%	-37.5%	3.7%	0.0%	14.3%	29.3%	-14.6%	--	5.2%
Citywide												
2015	198	609	1,796	1,455	112	2,532	1,215	1,458	1,912	842	6	12,135
2016	211	890	1,825	1,476	103	2,767	1,188	1,403	1,872	942	8	12,685
% Change	6.6%	46.1%	1.6%	1.4%	-8.0%	9.3%	-2.2%	-3.8%	-2.1%	11.9%	33.3%	4.5%

Figure 3: SCR Allegations, JUL 16 – SEP 16



Total Allegations = 34,030

Allegations are grouped as follows: Physical Abuse - burn, fatality, fracture, choking, twisting, shaking, excessive corporal punishment, internal injuries, lacerations, bruises, welts, poisoning, noxious substances; Educational Neglect – educational neglect; Lack of Medical Care – lack of medical care; Neglect - inadequate guardianship, inadequate food, clothing, shelter, lack of supervision, malnutrition, failure to thrive, swelling, dislocations, sprains; Psychological Abuse - isolation, emotional neglect; Sexual Abuse – sexual abuse; and Other -parental drug use, child drug use, abandonment, inappropriate custodial conduct.

Table 3 - SCR Allegations, JUL 15 - SEP 15 and JUL 16 – SEP 16

Year	Physical Abuse	Educational Neglect	Lack of Medical Care	Neglect	Psychological Abuse	Sexual Abuse	Other	Total
Bronx								
2015	1,009	182	359	7,142	42	243	1,705	10,682
2016	956	213	358	6,568	51	204	1,626	9,976
% Change	-5.3%	17.0%	-0.3%	-8.0%	21.4%	-16.0%	-4.6%	-6.6%
Brooklyn								
2015	998	162	283	6,071	31	254	1,489	9,288
2016	997	182	325	6,202	40	225	1,465	9,436
% Change	-0.1%	12.3%	14.8%	2.2%	29.0%	-11.4%	-1.6%	1.6%
Manhattan								
2015	325	68	133	2471	20	85	602	3,704
2016	416	82	138	2459	22	71	589	3,777
% Change	28.0%	20.6%	3.8%	-0.5%	10.0%	-16.5%	-2.2%	2.0%
Queens								
2015	644	75	181	3,695	36	127	1,043	5,801
2016	681	74	195	3,761	44	153	983	5,891
% Change	5.7%	-1.3%	7.7%	1.8%	22.2%	20.5%	-5.8%	1.6%
Staten Island								
2015	133	20	52	1,275	2	35	417	1,934
2016	144	33	48	1,197	11	39	348	1,820
% Change	8.3%	65.0%	-7.7%	-6.1%	450.0%	11.4%	-16.5%	-5.9%
OSI								
2015	233	14	57	1,135	20	56	128	1,643
2016	297	12	79	1,360	12	77	173	2,010
% Change	27.5%	-14.3%	38.6%	19.8%	-40.0%	37.5%	35.2%	22.3%
Other								
2015	101	18	44	719	5	41	276	1,204
2016	119	9	36	651	6	27	272	1,120
% Change	17.8%	-50.0%	-18.2%	-9.5%	20.0%	-34.1%	-1.4%	-7.0%
Citywide								
2015	3,443	539	1,109	22,508	156	841	5,660	34,256
2016	3,610	605	1,179	22,198	186	796	5,456	34,030
% Change	4.9%	12.2%	6.3%	-1.4%	19.2%	-5.4%	-3.6%	-0.7%

**TABLE 4 - Child Welfare Preventive Cases
Opened and Closed
January 2013 to September 2016**

Month	Opened Cases	Closed Cases
2013		
Jan-13	753	884
Feb-13	742	916
Mar-13	801	1,171
Apr-13	785	988
May-13	682	1,337
Jun-13	775	780
Jul-13	802	1,004
Aug-13	777	1,084
Sep-13	727	724
Oct-13	780	765
Nov-13	725	685
Dec-13	946	552
2014		
Jan-14	841	640
Feb-14	885	679
Mar-14	998	874
Apr-14	919	896
May-14	919	888
Jun-14	890	762
Jul-14	973	1,077
Aug-14	826	943
Sep-14	841	705
Oct-14	835	819
Nov-14	677	638
Dec-14	1,062	721
2015		
Jan-15	728	716
Feb-15	902	590
Mar-15	1,122	686
Apr-15	977	743
May-15	914	842
Jun-15	1,068	797
Jul-15	899	1,070
Aug-15	893	891
Sep-15	764	847
Oct-15	749	772
Nov-15	746	652
Dec-15	1,013	707
2016		
Jan-16	792	668
Feb-16	897	667
Mar-16	1,029	869
Apr-16	836	794
May-16	890	709
Jun-16	996	700
Jul-16	842	784
Aug-16	897	755
Sep-16	812	645

**Table 5 - Referrals to Child Welfare Preventive Services by Source
January 2013 to September 2016**

Month	Total Referrals	Division of Child Protection	Foster Care Agencies	PPRS Transfer	School	Self	Other Sources*
2013							
Jan-13	1,474	74.1%	1.2%	7.3%	1.2%	3.7%	12.5%
Feb-13	1,308	75.8%	1.1%	8.0%	1.6%	2.9%	10.6%
Mar-13	1,270	73.5%	1.2%	6.7%	2.4%	3.9%	12.3%
Apr-13	1,421	77.9%	0.8%	7.4%	0.9%	3.0%	10.1%
May-13	1,320	68.4%	0.5%	10.2%	1.5%	3.8%	15.5%
Jun-13	953	69.2%	1.2%	9.4%	2.6%	5.0%	12.6%
Jul-13	1,014	66.3%	1.9%	14.4%	1.6%	3.9%	11.9%
Aug-13	1,212	70.5%	0.7%	11.8%	0.7%	4.7%	11.6%
Sep-13	1,262	64.0%	2.1%	11.3%	1.7%	6.7%	14.2%
Oct-13	1,319	61.0%	1.1%	9.0%	2.9%	7.5%	18.5%
Nov-13	1,249	55.9%	1.6%	10.5%	4.6%	9.2%	18.3%
Dec-13	1,464	62.2%	1.2%	8.2%	2.3%	9.2%	17.0%
CY 2013	15,266	68.3%	1.2%	9.4%	2.0%	5.3%	13.8%
2014							
Jan-14	1,537	70.0%	1.2%	6.6%	2.3%	5.8%	14.2%
Feb-14	1,334	69.7%	0.8%	8.4%	1.7%	5.5%	13.9%
Mar-14	1,612	70.0%	1.4%	8.6%	1.6%	5.3%	13.1%
Apr-14	1,525	70.2%	0.9%	7.6%	2.1%	3.7%	15.4%
May-14	1,580	74.4%	0.7%	8.3%	1.4%	5.2%	10.0%
Jun-14	1,550	78.6%	1.2%	6.3%	1.2%	3.2%	9.4%
Jul-14	1,659	79.6%	1.5%	6.7%	0.4%	4.2%	7.6%
Aug-14	1,395	72.2%	1.6%	10.8%	0.3%	4.9%	10.3%
Sep-14	1,597	49.4%	1.5%	7.6%	0.3%	4.5%	36.8%
Oct-14	1,634	68.2%	1.9%	10.0%	1.2%	4.6%	14.1%
Nov-14	1,311	66.4%	0.9%	14.3%	2.4%	3.9%	12.1%
Dec-14	1,785	71.1%	1.4%	8.8%	2.9%	4.8%	11.0%
CY 2014	18,519	70.1%	1.3%	8.6%	1.5%	4.6%	14.0%
2015							
Jan-15	1,430	74.4%	1.6%	8.7%	1.8%	3.8%	9.7%
Feb-15	1,538	76.5%	0.8%	8.1%	1.8%	4.7%	8.2%
Mar-15	1,798	74.6%	0.9%	7.3%	1.6%	4.8%	10.8%
Apr-15	1,719	78.2%	1.3%	7.2%	0.6%	3.5%	9.1%
May-15	1,561	77.2%	1.0%	5.1%	1.5%	4.5%	10.8%
Jun-15	1,716	77.4%	1.1%	7.7%	1.2%	3.5%	9.1%
Jul-15	1,511	79.6%	0.9%	7.2%	0.3%	3.8%	8.2%
Aug-15	1,418	79.3%	2.2%	7.8%	0.2%	3.1%	7.5%
Sep-15	1,209	72.1%	2.8%	10.4%	0.5%	5.5%	8.6%
Oct-15	1,338	70.4%	1.9%	8.3%	2.1%	5.8%	11.6%
Nov-15	1,220	68.2%	1.8%	9.6%	1.4%	6.2%	12.8%
Dec-15	1,526	73.5%	1.6%	8.0%	2.0%	5.0%	9.9%
2016							
Jan-16	1,370	73.6%	1.6%	8.2%	0.7%	5.4%	10.6%
Feb-16	1,436	75.8%	2.2%	7.8%	1.0%	3.8%	9.3%
Mar-16	1,557	72.0%	2.1%	8.8%	1.0%	4.6%	11.4%
Apr-16	1,378	76.1%	1.5%	7.4%	1.5%	3.5%	10.0%
May-16	1,386	73.4%	1.4%	8.7%	1.0%	4.7%	10.8%
Jun-16	1,564	77.2%	2.4%	6.2%	1.5%	4.1%	8.6%
Jul-16	1,338	80.3%	1.7%	6.4%	1.0%	4.2%	6.4%
Aug-16	1,386	79.1%	1.8%	7.1%	0.4%	4.0%	7.6%
Sep-16	1,288	78.3%	1.8%	7.5%	0.8%	4.3%	7.2%

*Other Community Sources includes the Department of Homeless Services, Family Court, FAP, Hospitals and Medical facilities, the NYC Housing Authority, Probation, and Sponsor Agencies.