

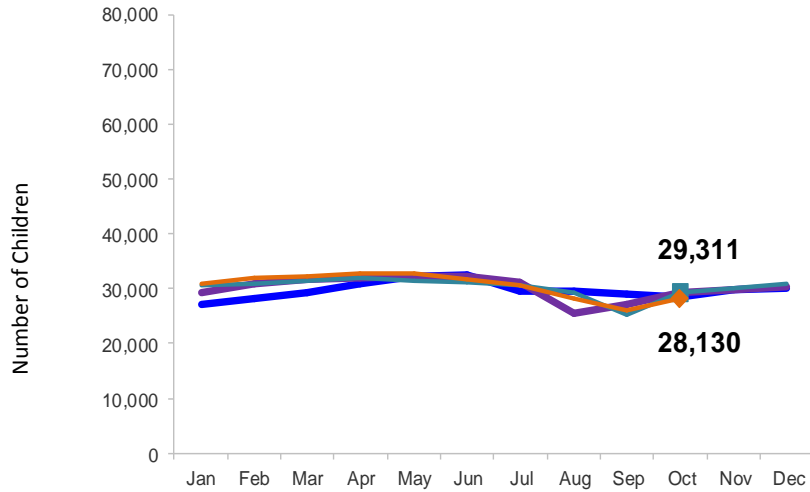


Flash

November 2016

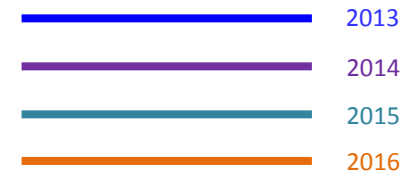
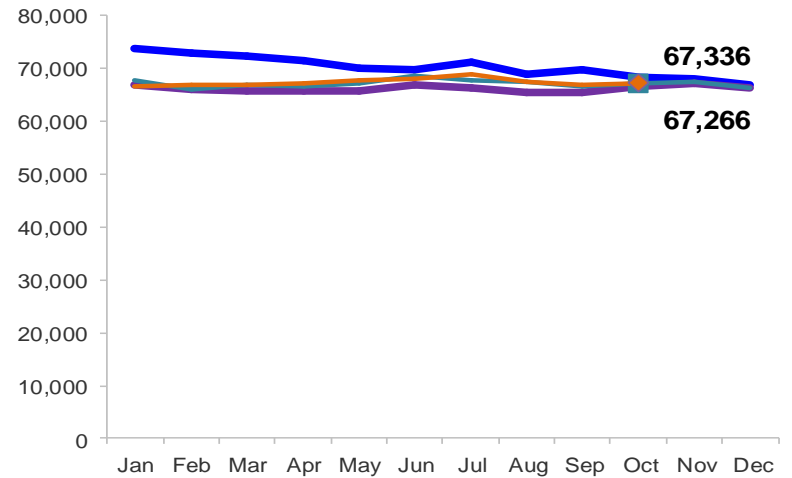
Children Enrolled in Contracted EarlyLearn Programs

January 2013 – October 2016 (End of Month)



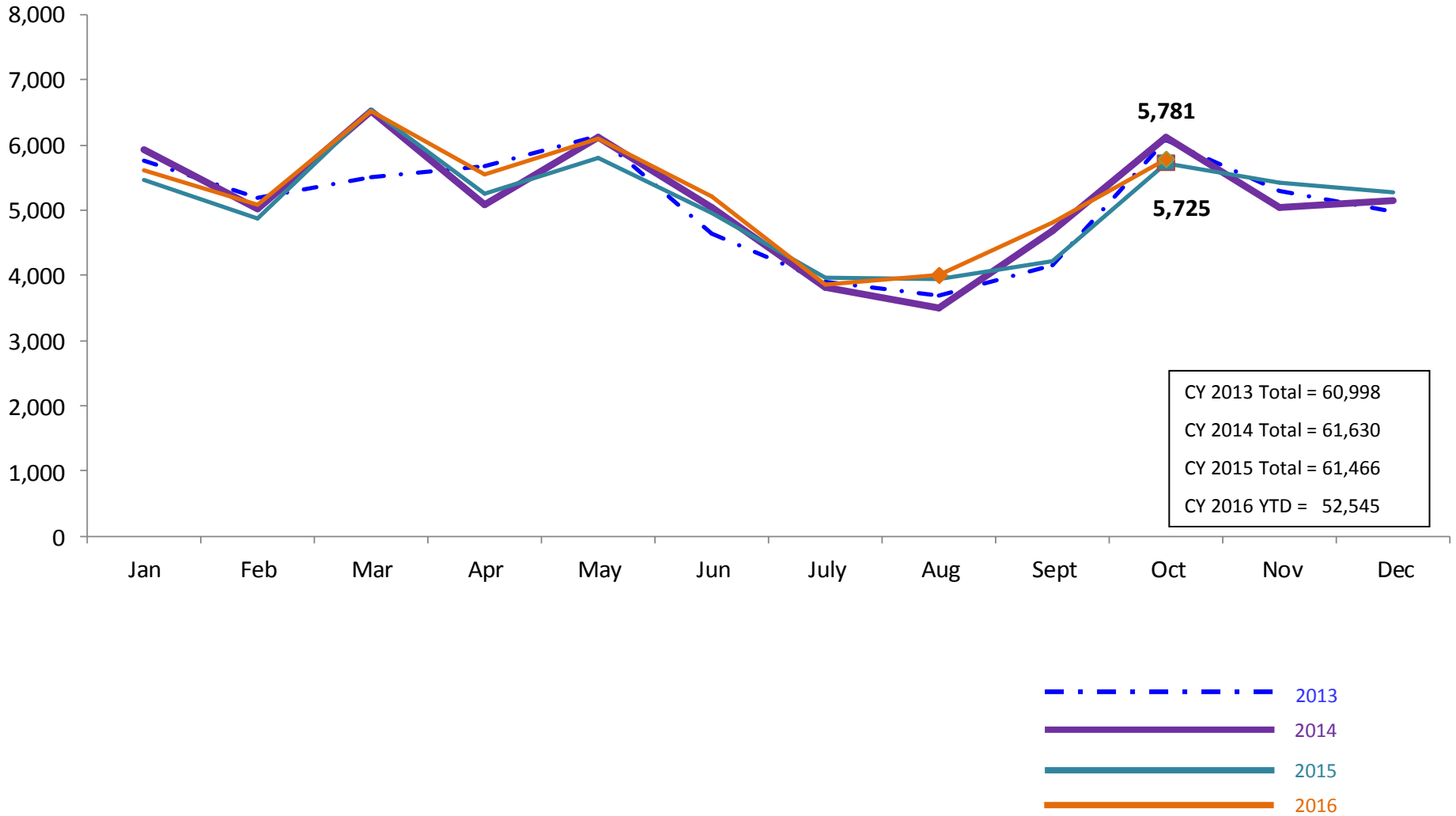
Children Using Vouchers for Child Care

January 2013 – October 2016 (End of Month)



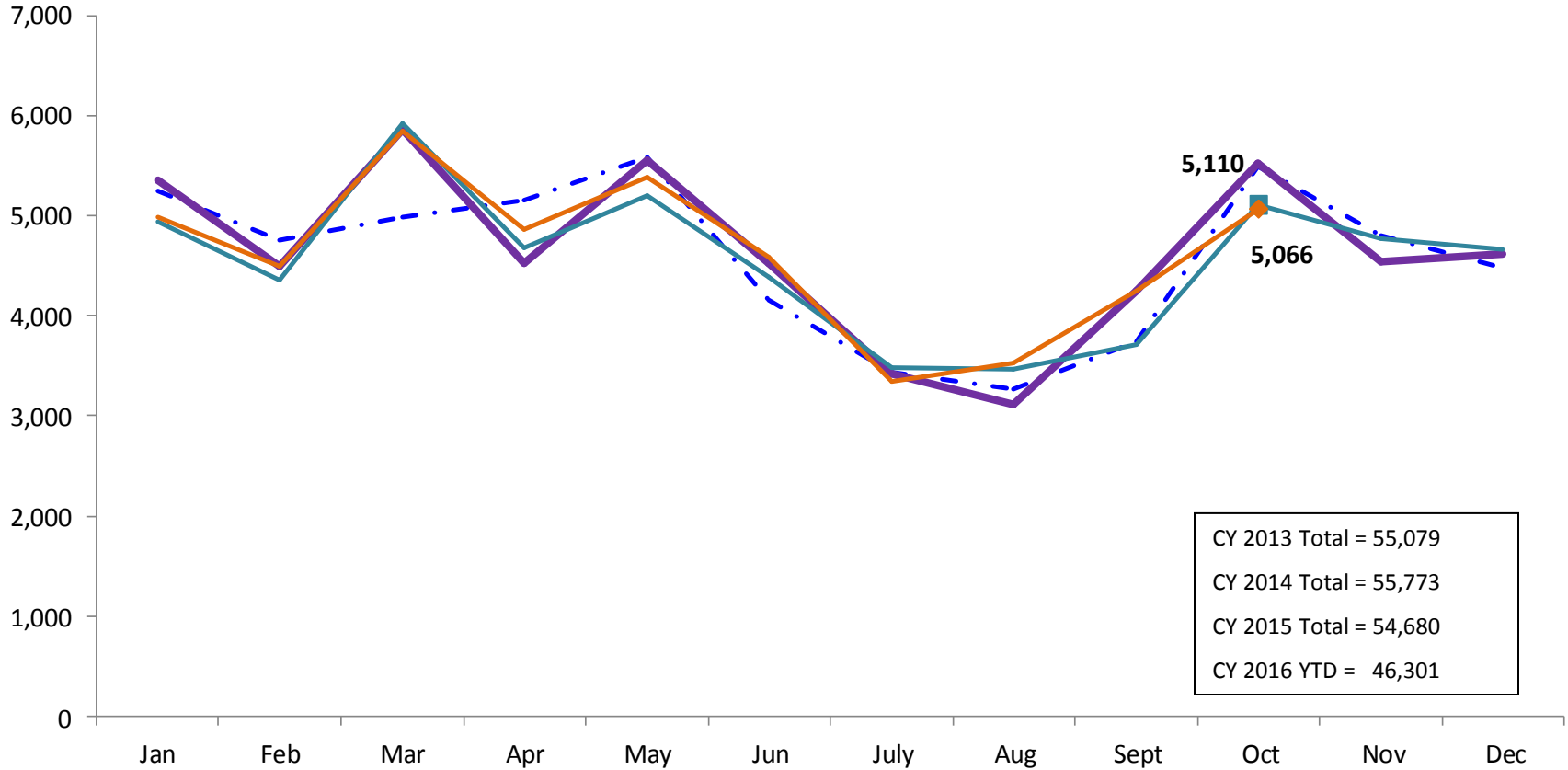
SCR Intakes

January 2013 – October 2016 (Monthly Total)

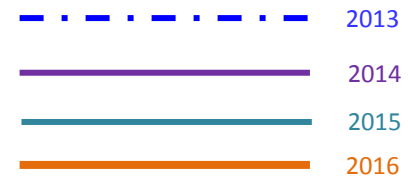


SCR Consolidated Investigations

January 2013 – October 2016 (Monthly Total)

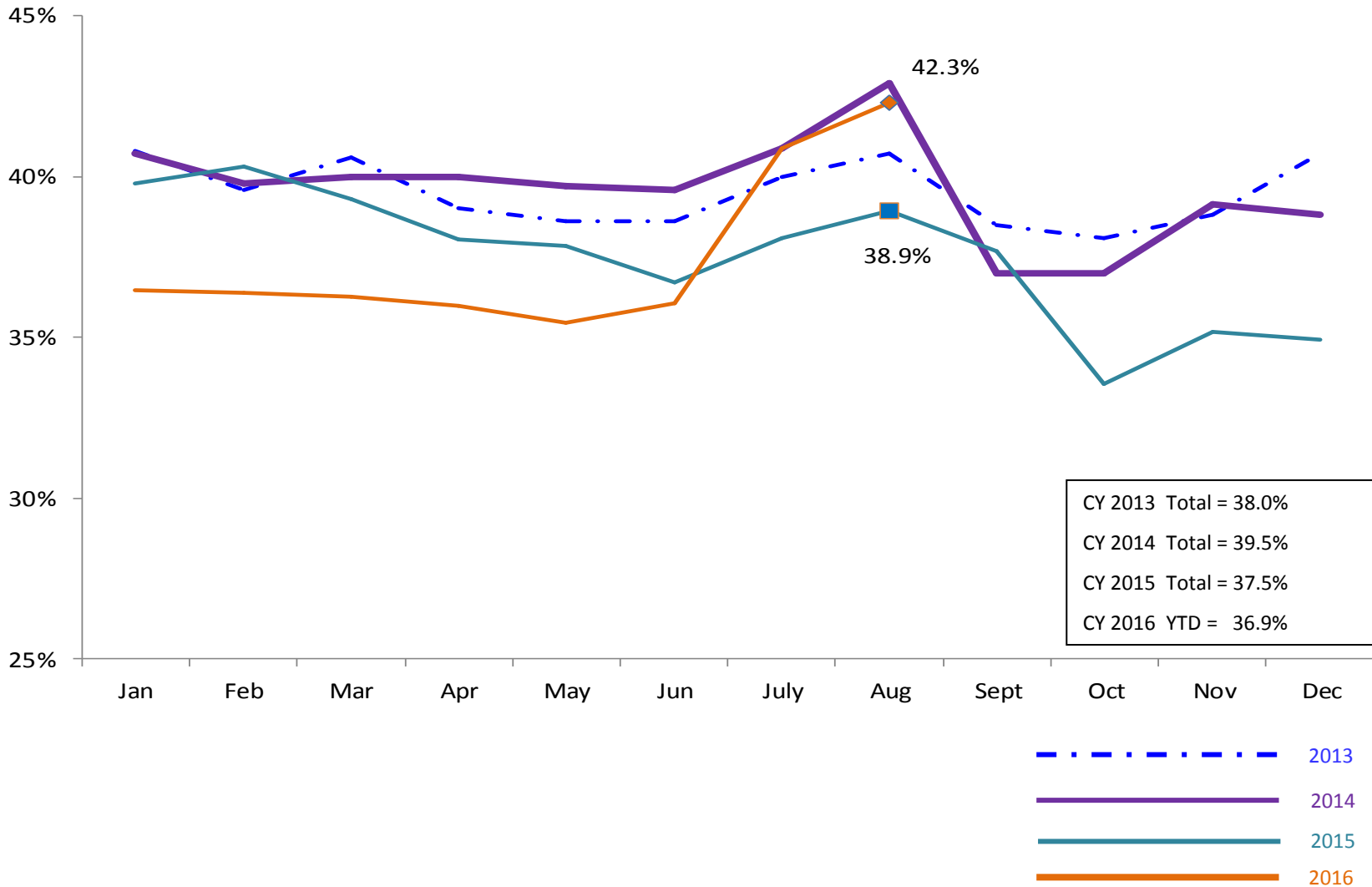


CY 2013 Total = 55,079
 CY 2014 Total = 55,773
 CY 2015 Total = 54,680
 CY 2016 YTD = 46,301



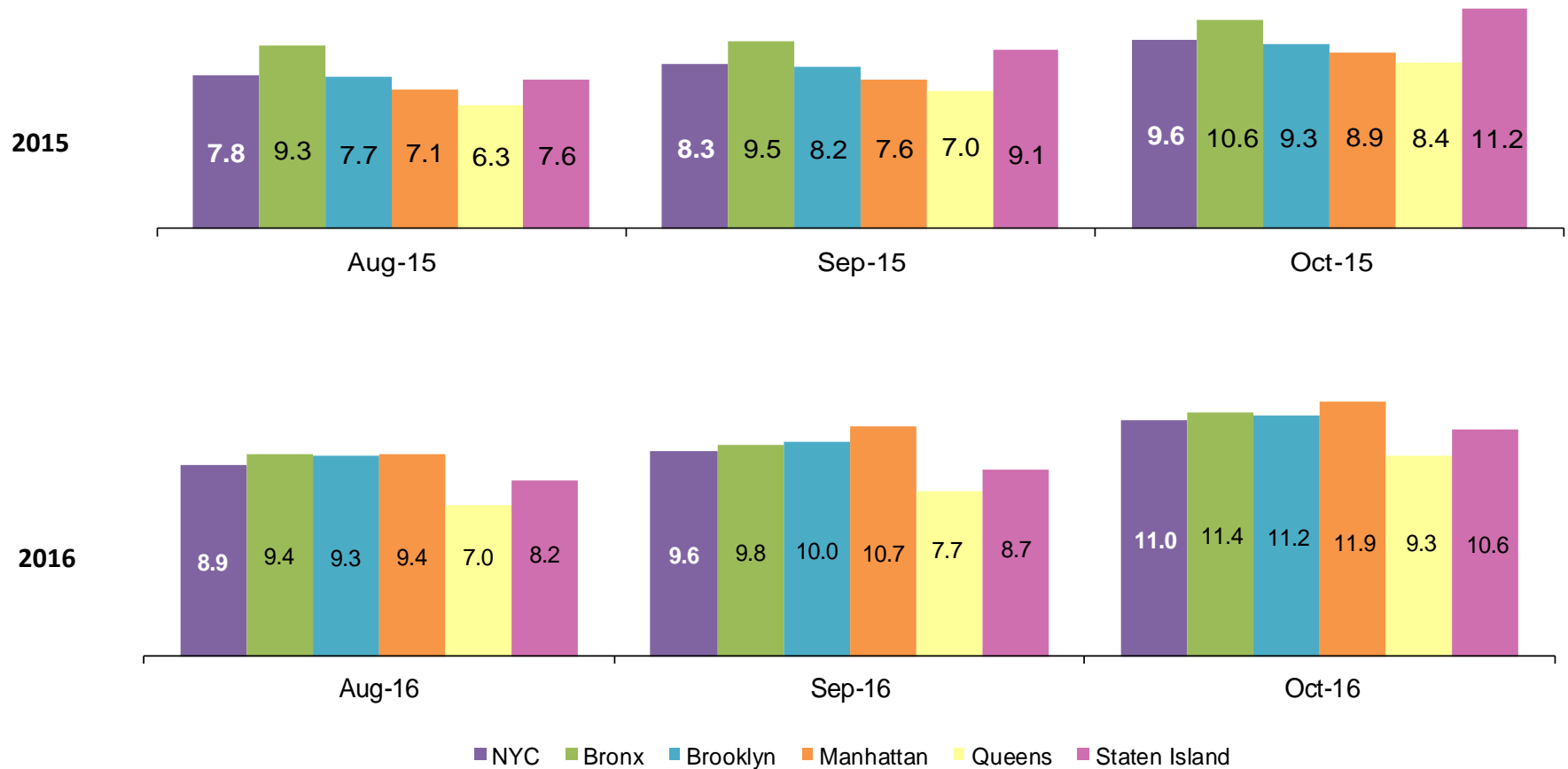
SCR Investigation Indication Rate

January 2013 – August 2016



Average P/D Combined Caseload*

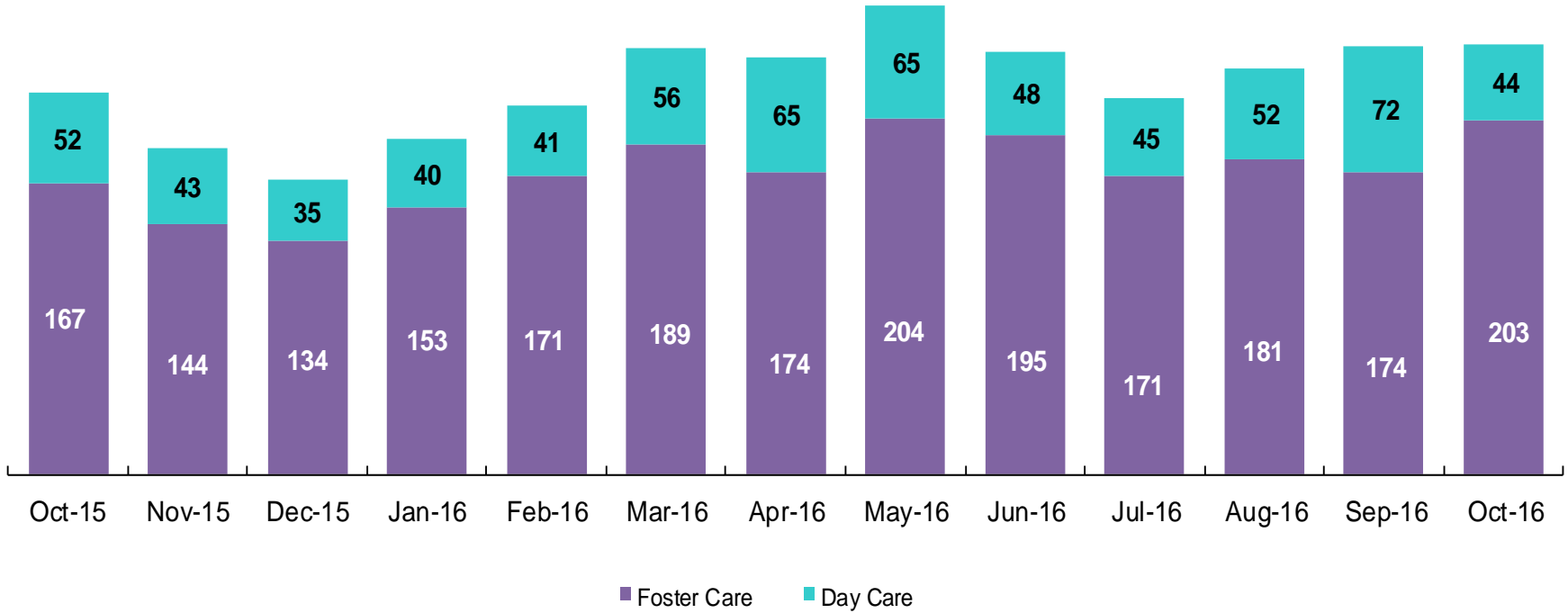
August 2015 – October 2015 & August 2016 – October 2016



* Caseloads are of protective/diagnostic caseworkers only and exclude the caseloads carried by Level I and Level II Supervisors.

OSI Investigations by Program

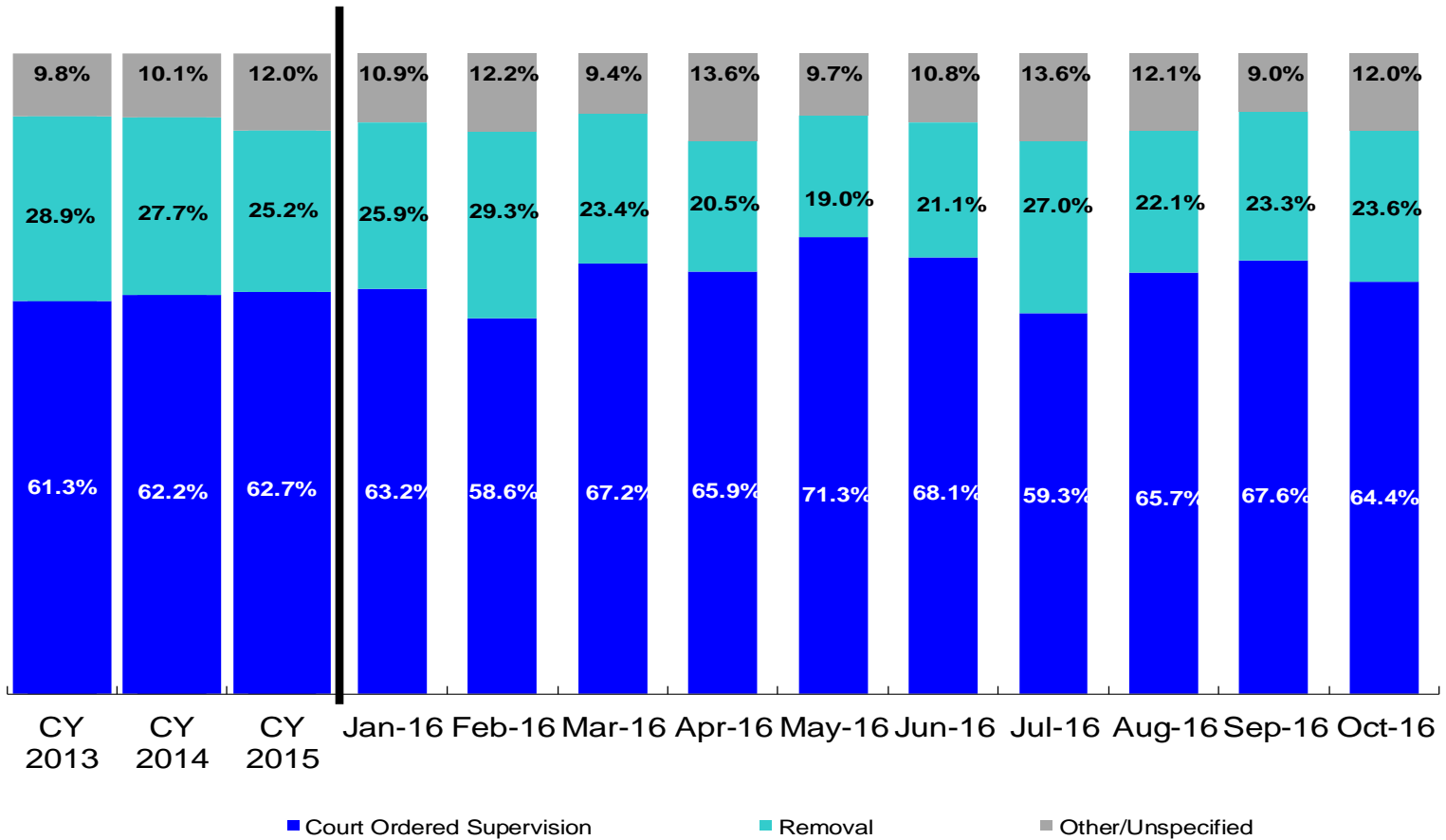
October 2015 – October 2016



	Oct 2015	Nov 2015	Dec 2015	Jan 2016	Feb 2016	Mar 2016	Apr 2016	May 2016	Jun 2016	Jul 2016	Aug 2016	Sep 2016	Oct 2016
Number of Investigations	219	187	169	193	212	245	239	269	243	216	233	246	247

Article 10 Total Filings & Filing Outcomes

CY 2013 – October 2016

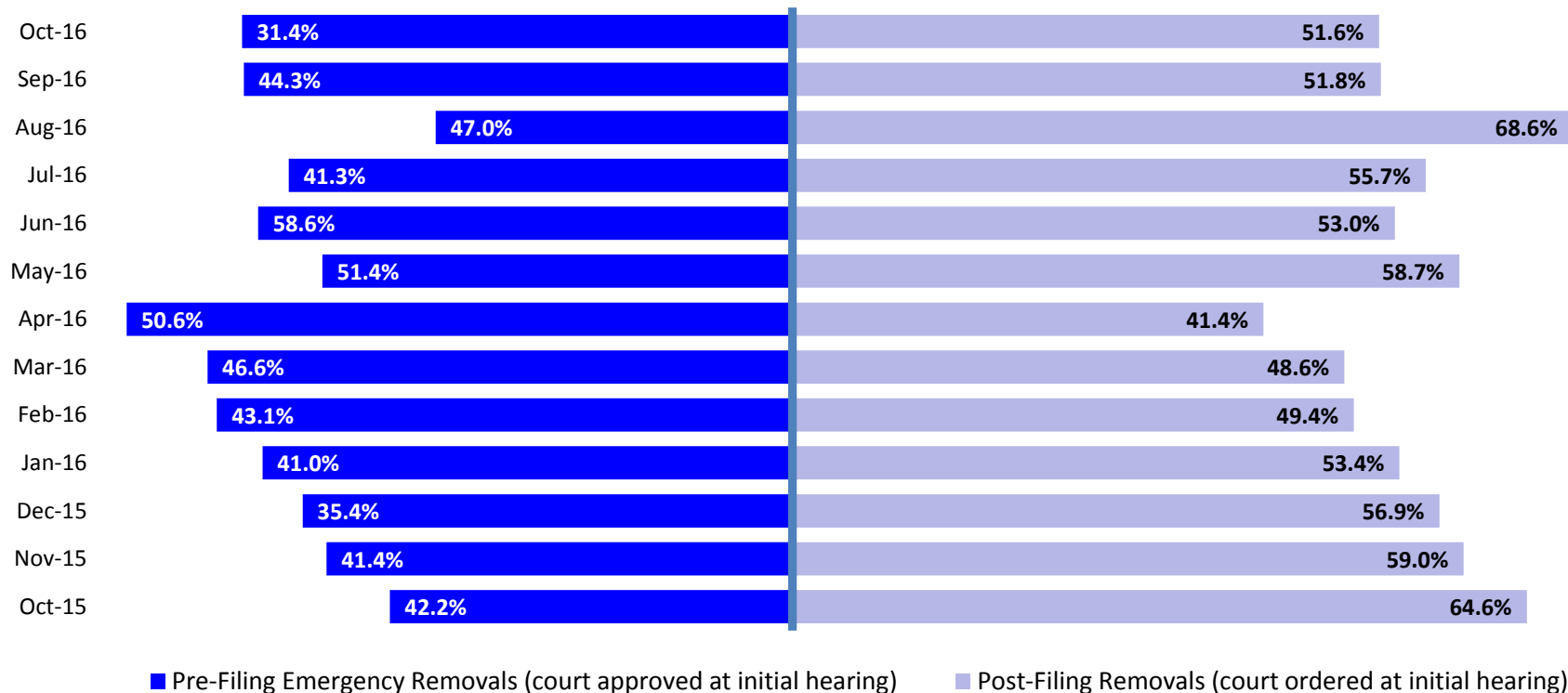


	CY 2013	CY 2014	CY 2015	Jan 2016	Feb 2016	Mar 2016	Apr 2016	May 2016	Jun 2016	Jul 2016	Aug 2016	Sep 2016	Oct 2016
Article10 Filings	9,318	9,900	10,257	737	830	890	883	790	868	777	922	853	1,322

Note: The category "Other/Unspecified" includes released with no supervision, no order issued and no outcome specified.

Article 10 Filing Removals

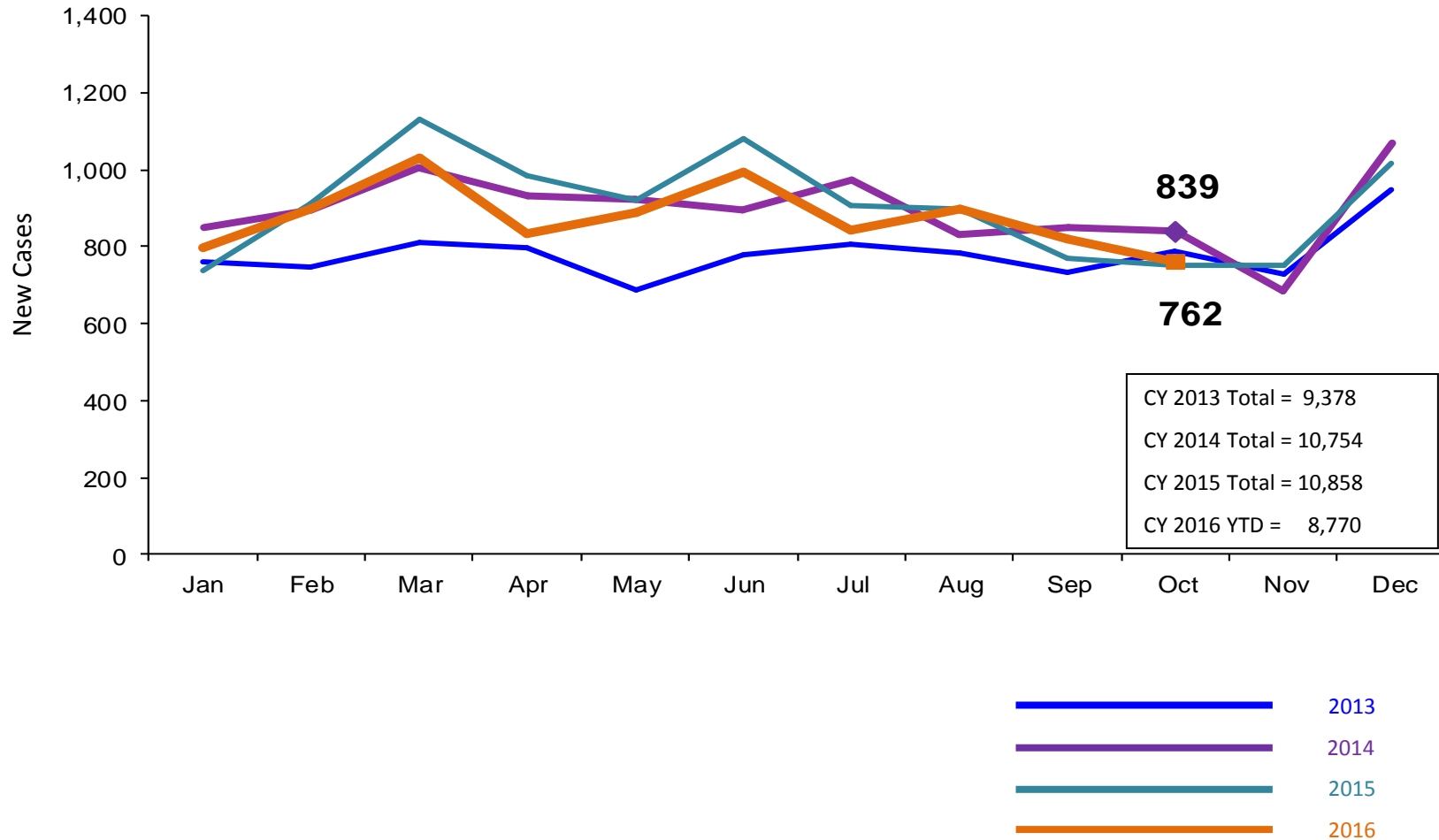
October 2015 – October 2016



	Oct 2015	Nov 2015	Dec 2015	Jan 2016	Feb 2016	Mar 2016	Apr 2016	May 2016	June 2016	July 2016	Aug 2016	Sep 2016	Oct 2016
Number of Removals	178	166	195	191	243	208	181	150	183	210	204	199	312

New Child Welfare Preventive Cases*

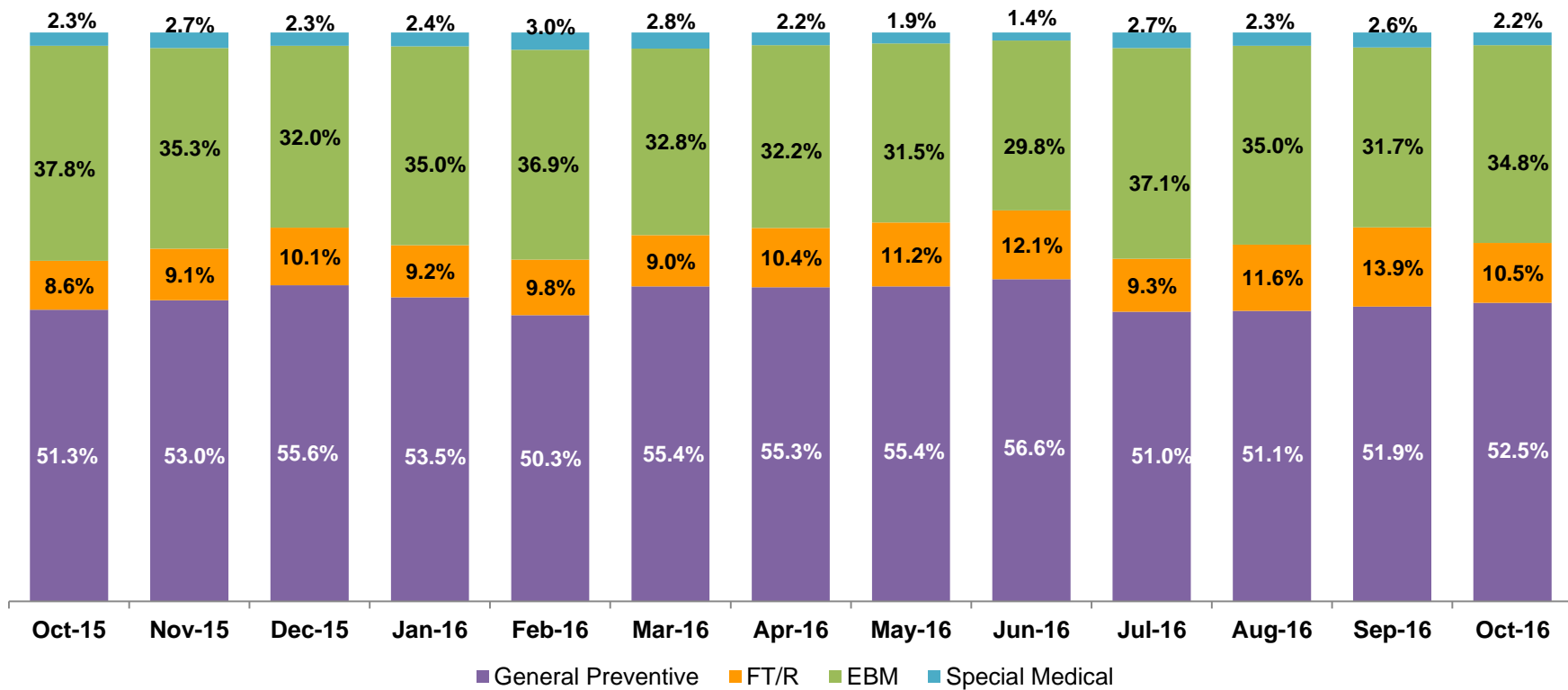
January 2013 – October 2016



*Notes: 1) New preventive cases do not include cases transferred from one preventive program to another. 2) See Pages 33 and 34 of the Appendix for supporting data.

New Child Welfare Preventive Cases by Program Type *

October 2015 – October 2016

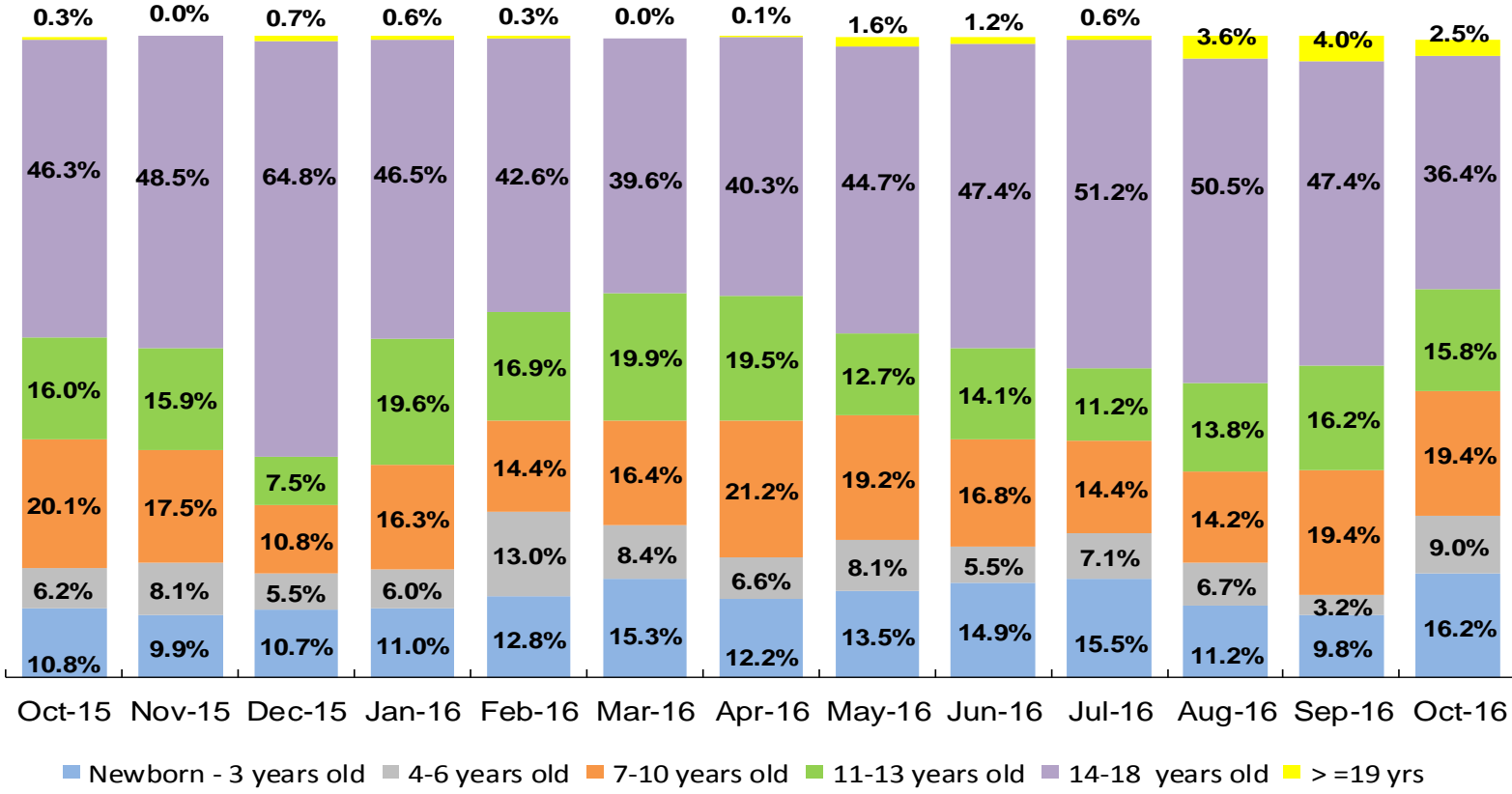


	Oct 2015	Nov 2015	Dec 2015	Jan 2016	Feb 2016	Mar 2016	Apr 2016	May 2016	June 2016	July 2016	Aug 2016	Sep 2016	Oct 2016
Number of New Preventive Cases	754	751	1015	797	900	1029	836	890	996	842	897	821	762

* New preventive cases exclude cases transferred from one preventive program to another.

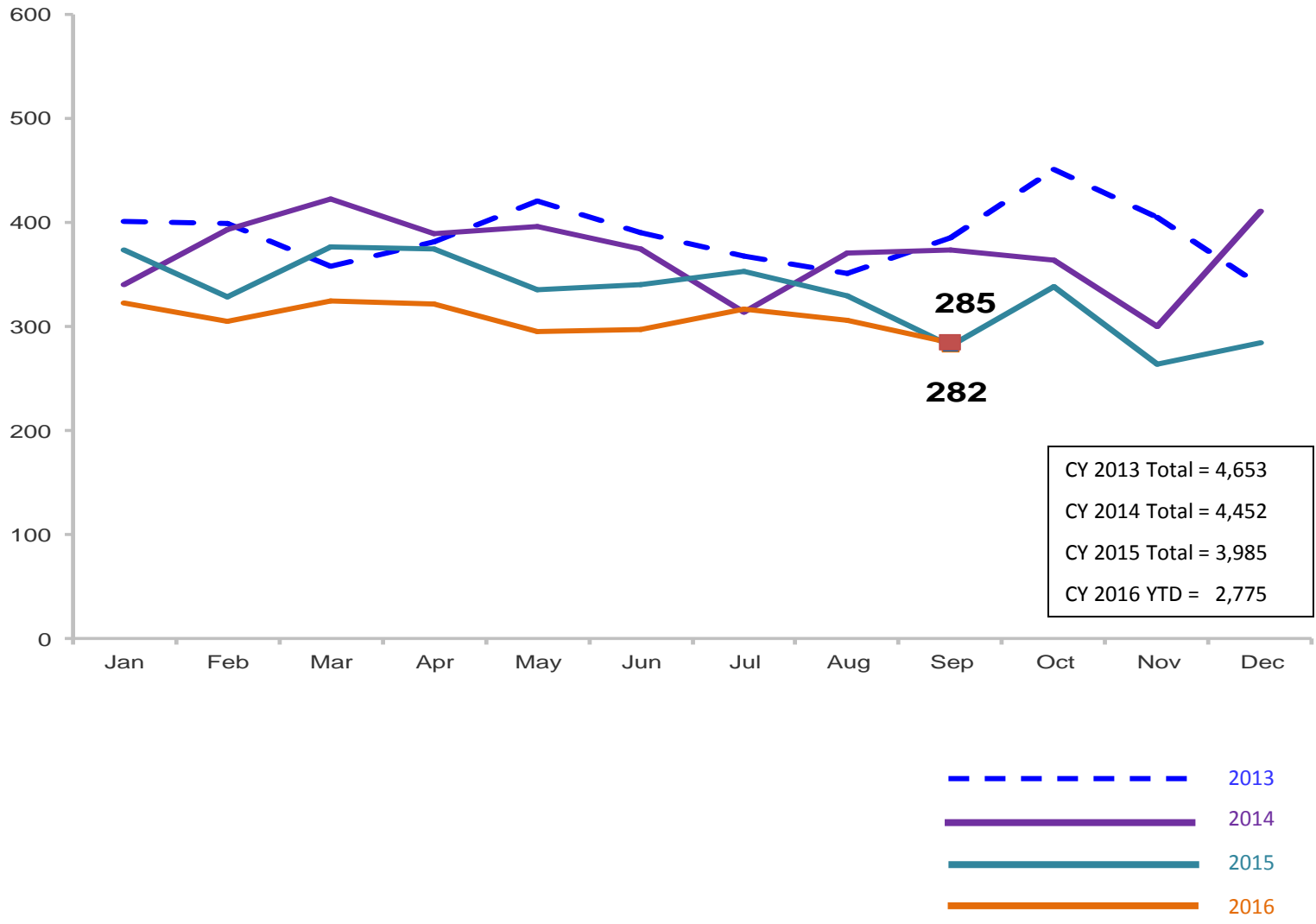
Average Pre-Placement Residential Monthly Population

October 2015 – October 2016



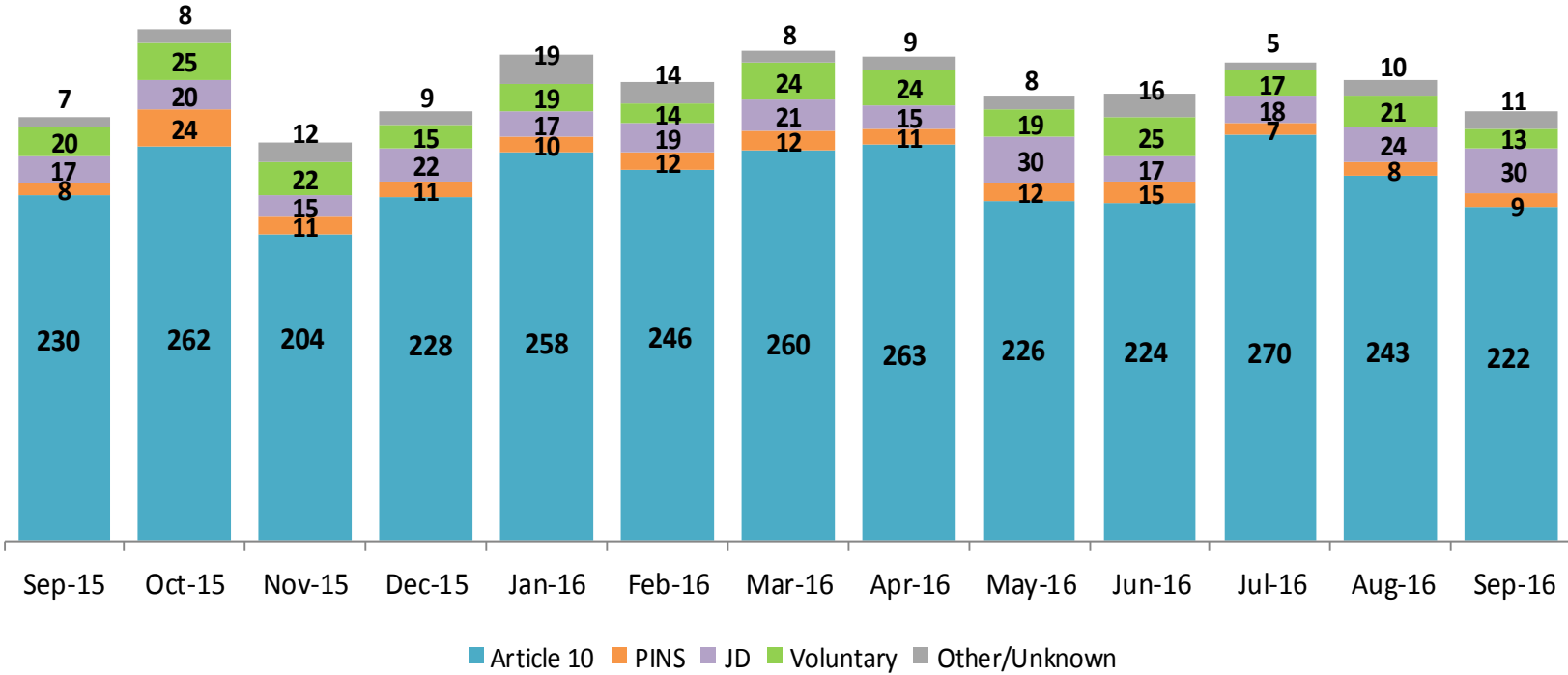
	Oct 2015	Nov 2015	Dec 2015	Jan 2016	Feb 2016	Mar 2016	Apr 2016	May 2016	Jun 2016	Jul 2016	Aug 2016	Sep 2016	Oct 2016
Average Number of Children	45	40	40	46	45	49	53	34	40	50	56	54	72

Total Monthly Placements January 2013 – September 2016



Reason for Initial Placements into Foster Care

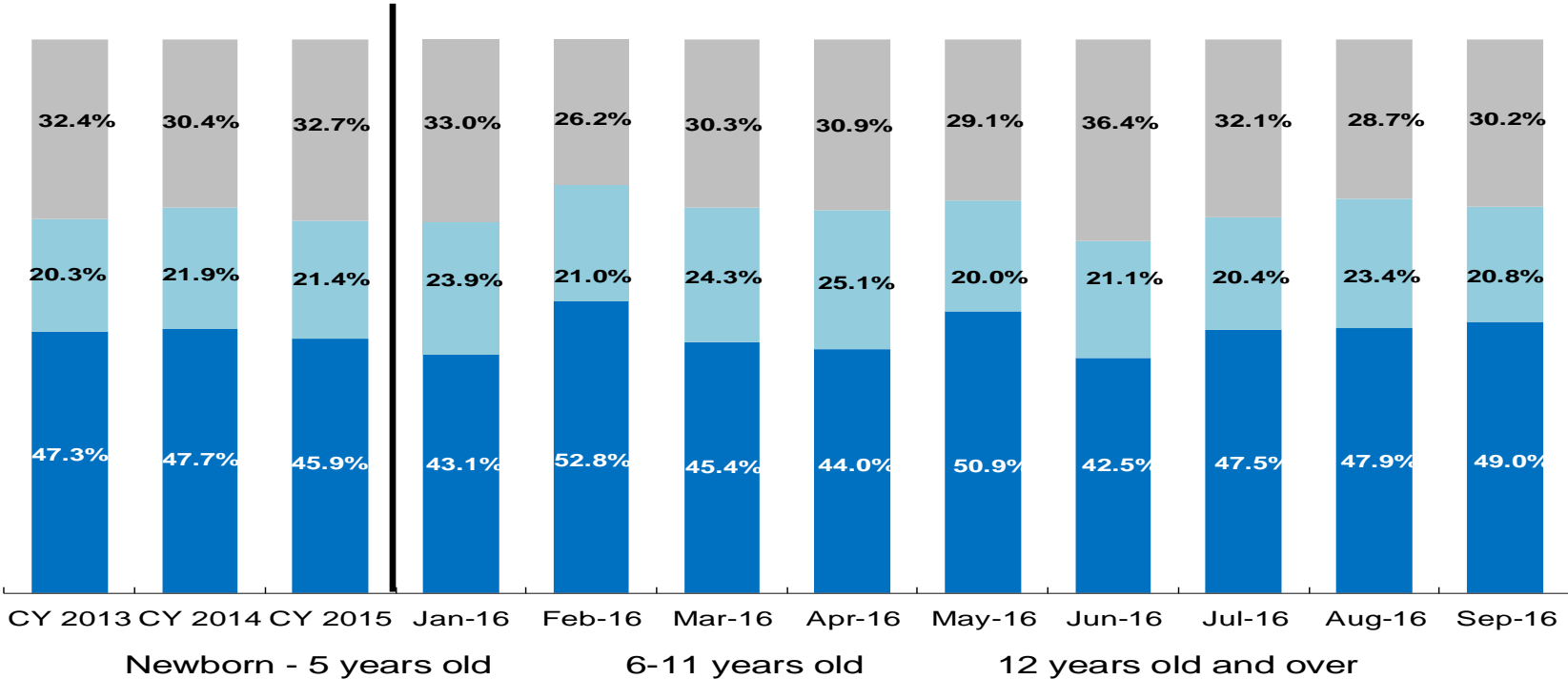
September 2015 – September 2016



	Sep 2015	Oct 2015	Nov 2015	Dec 2015	Jan 2016	Feb 2016	Mar 2016	Apr 2016	May 2016	Jun 2016	Jul 2016	Aug 2016	Sep 2016
Number of Placements	282	339	264	285	323	305	325	322	295	297	317	306	285

Placements* by Age

CY 2013 - September 2016

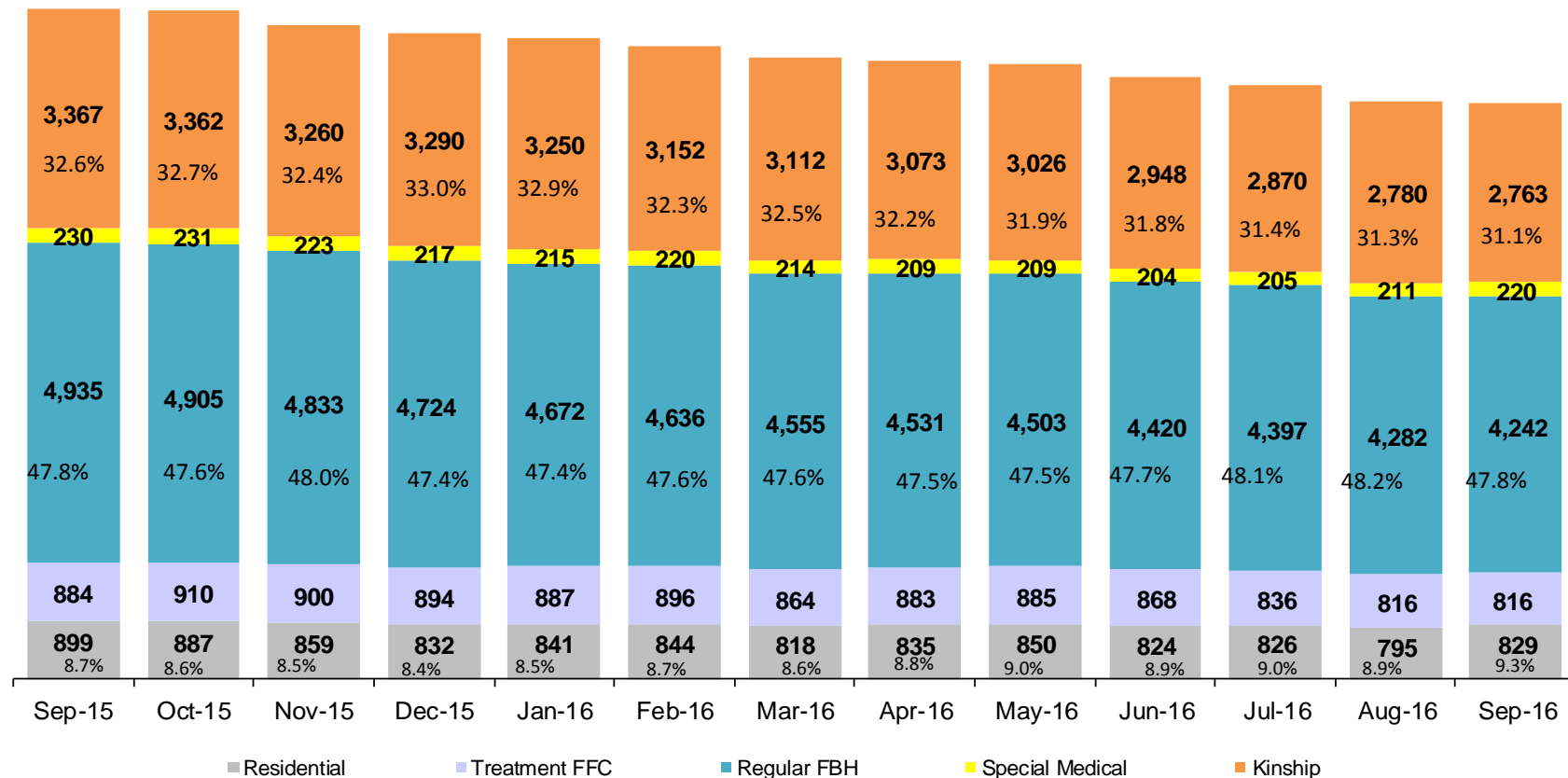


	CY 2013	CY 2014	CY 2015	Jan 2016	Feb 2016	Mar 2016	Apr 2016	May 2016	Jun 2016	Jul 2016	Aug 2016	Sep 2016
Placements (without JDs)	4,283	4,160	3,760	306	286	304	307	265	280	299	282	255

*Excludes JD placements.

Children in Foster Care *

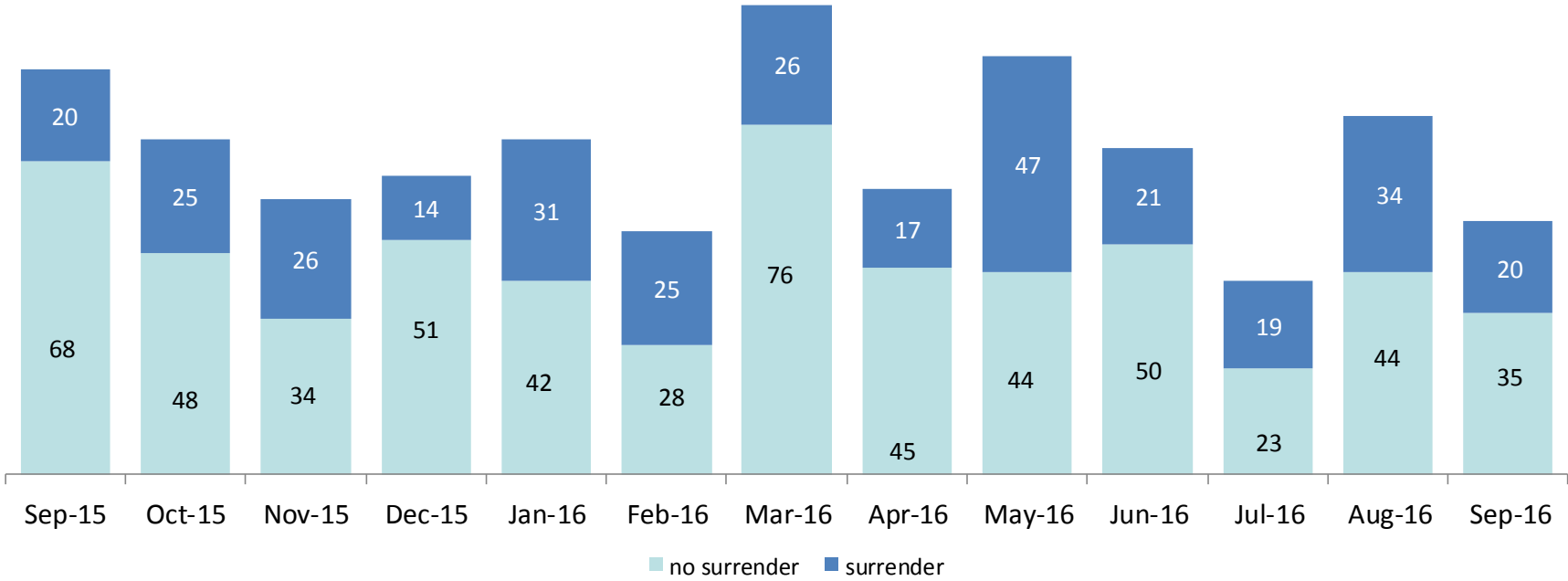
September 2015 – September 2016 (end of month)



	Sep 2015	Oct 2015	Nov 2015	Dec 2015	Jan 2016	Feb 2016	Mar 2016	Apr 2016	May 2016	Jun 2016	Jul 2016	Aug 2016	Sep 2016
Number in Foster Care	10,315	10,295	10,075	9,957	9,865	9,748	9,563	9,531	9,473	9,264	9,134	8,884	8,870

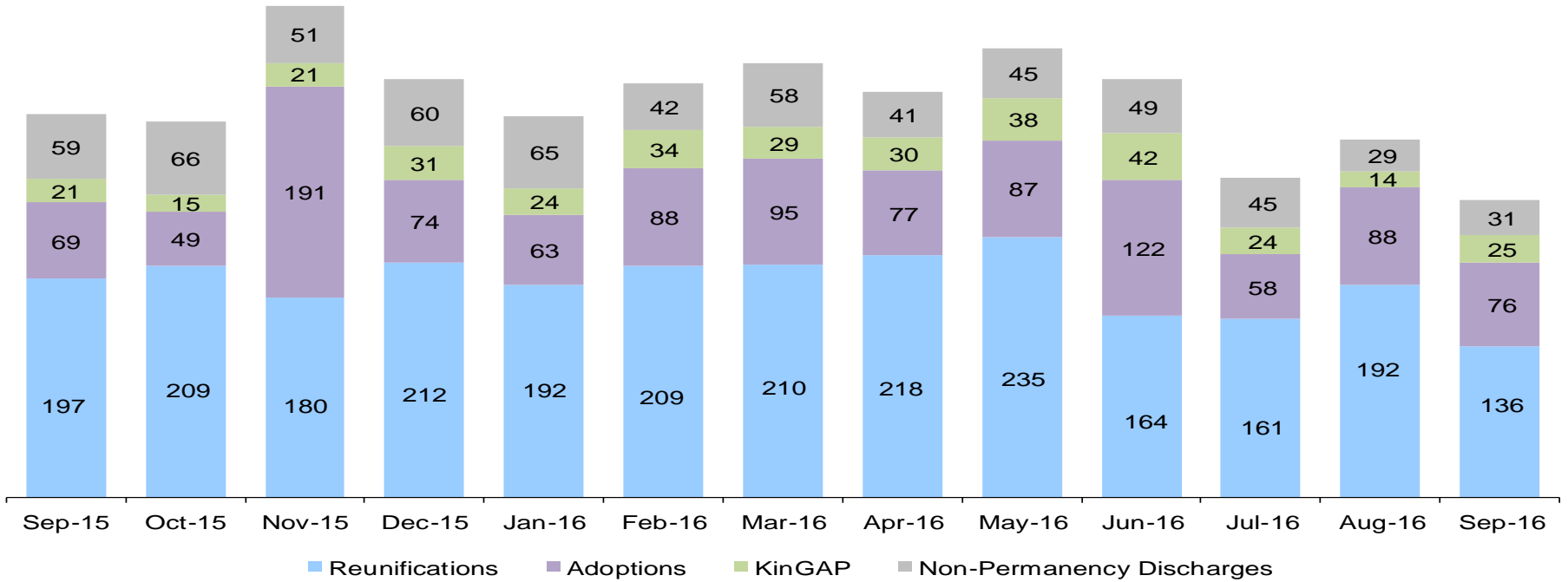
*Excludes JD placements and includes children in 24 hour care and approximately 200 young children who are living in foster homes or residential care facilities with their mothers who are in foster care (8D children).

Children Freed for Adoption, Surrender by at Least One Parent September 2015 – September 2016



	Sep 2015	Oct 2015	Nov 2015	Dec 2015	Jan 2016	Feb 2016	Mar 2016	Apr 2016	May 2016	Jun 2016	Jul 2016	Aug 2016	Sep 2016
Number Freed for Adoption	98	87	73	63	73	53	102	62	91	71	42	78	55

Permanency and Non-Permanency* Discharges from Foster Care** September 2015 – September 2016



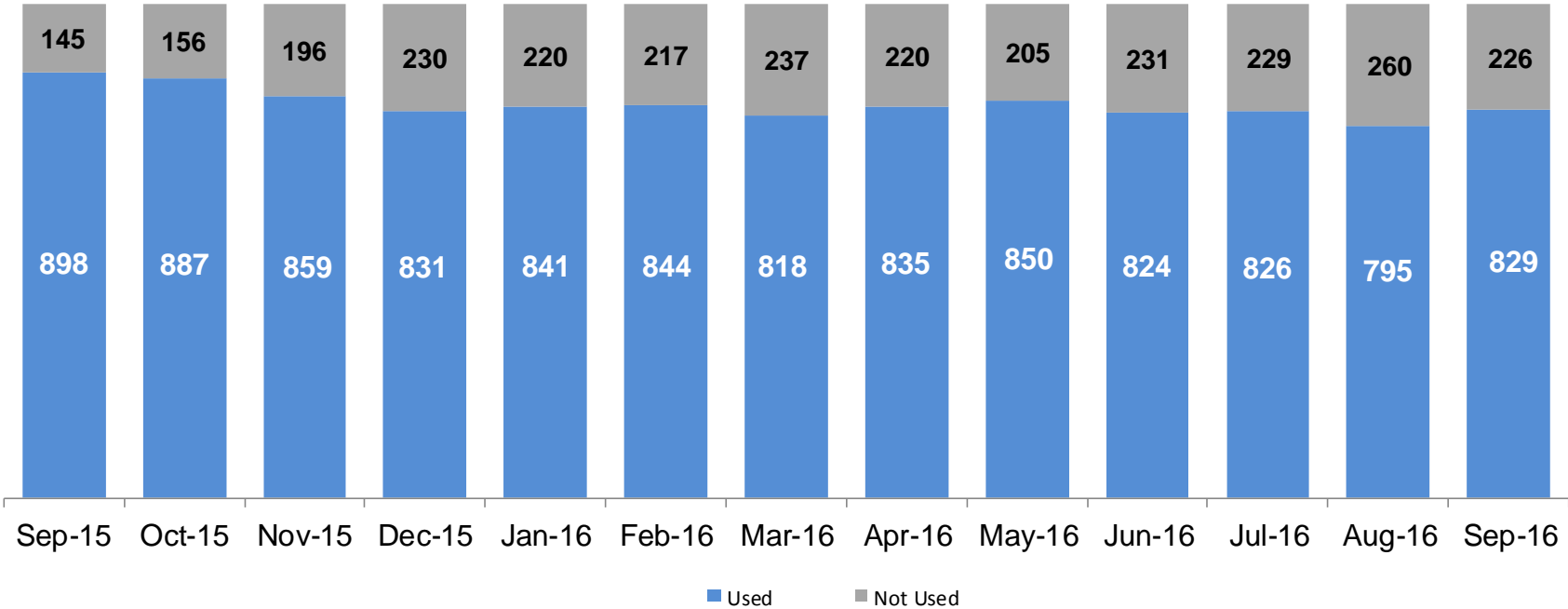
	Sep 2015	Oct 2015	Nov 2015	Dec 2015	Jan 2016	Feb 2016	Mar 2016	Apr 2016	May 2016	Jun 2016	Jul 2016	Aug 2016	Sep 2016
Number of Discharges	346	339	443	377	344	373	392	366	405	377	288	323	268

*Non-permanency discharges include AWOL, APPLA , other discharge destinations such as psychiatric institutions and correctional facilities and discharges with unspecified destinations.

**Excludes discharges of youth who entered care as a JD.

Residential Care Capacity and Utilization

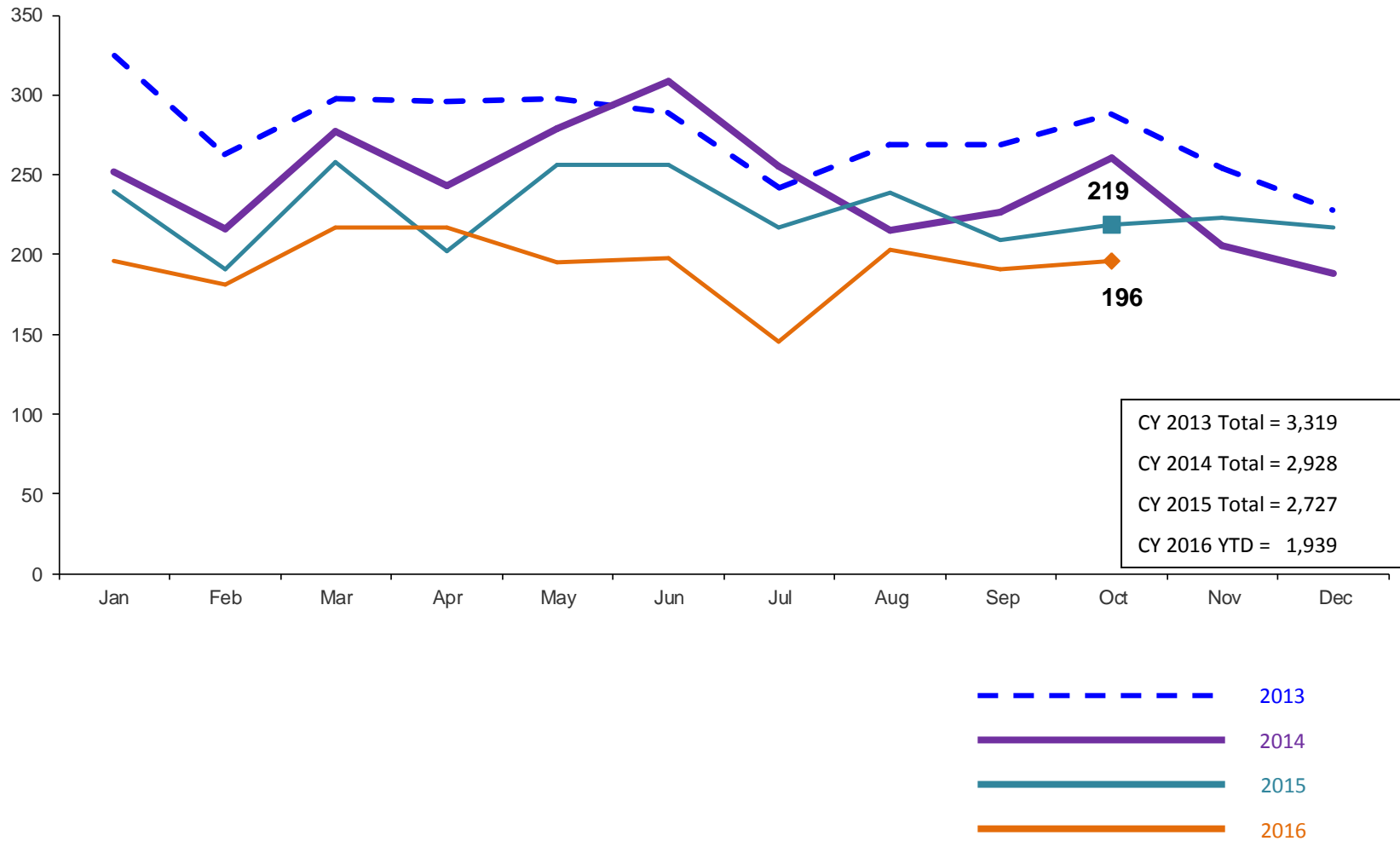
September 2015 – September 2016



	Sep 2015	Oct 2015	Nov 2015	Dec 2015	Jan 2016	Feb 2016	Mar20 16	Apr 2016	May 2016	Jun 2016	Jul 2016	Aug 2016	Sep 2016
Capacity	1,043	1,043	1,055	1,061	1,061	1,061	1,055	1,055	1,055	1,055	1,055	1,055	1,055

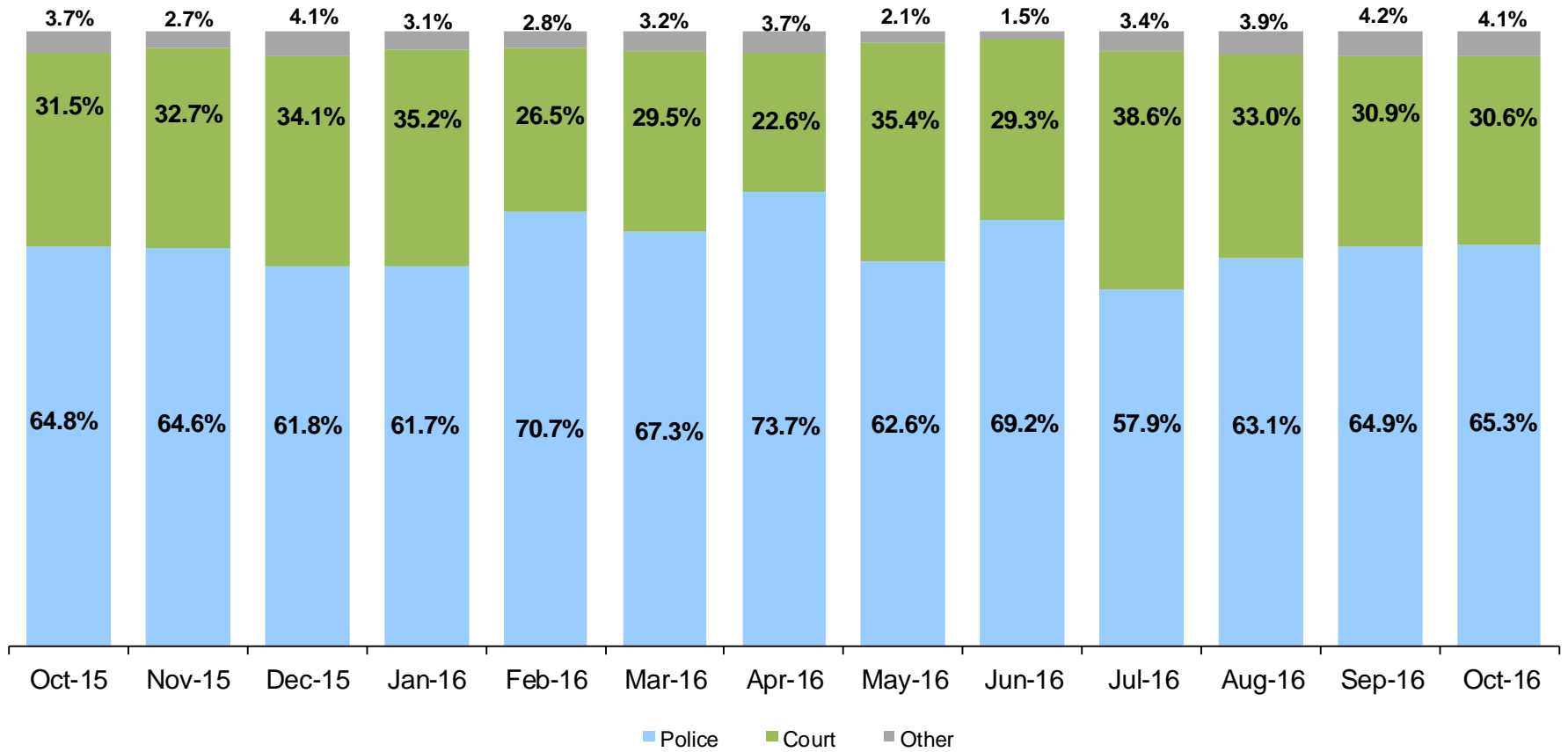
Total Monthly Admissions to Detention

January 2013 – October 2016 (Monthly Total)



Admit Authority on Admissions

October 2015 – October 2016 (Monthly Total)



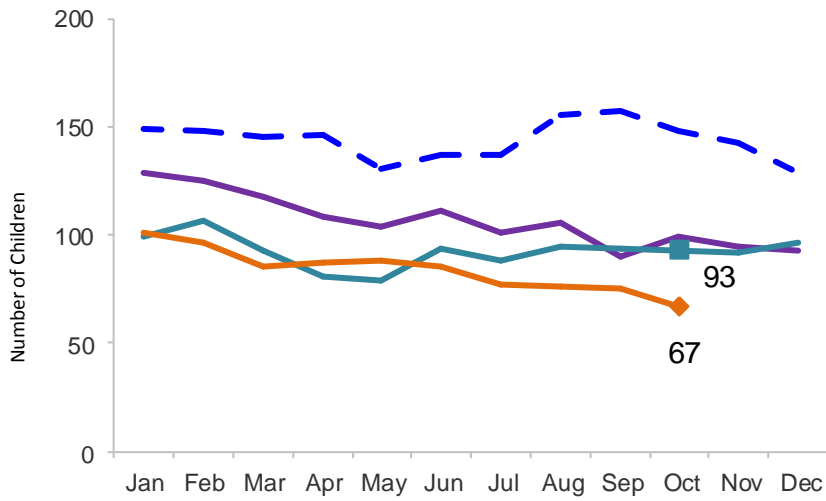
	Oct 2015	Nov 2015	Dec 2015	Jan 2016	Feb 2016	Mar 2016	Apr 2016	May 2016	Jun 2016	Jul 2016	Aug 2016	Sep 2016	Oct 2016
Number of Admissions	219	223	217	196	181	217	217	195	198	145	203	191	196

Note: Other Admit Authority includes the Sheriff Department, Department of Corrections and ACS.

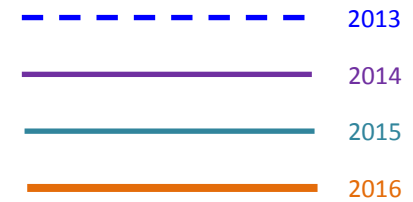
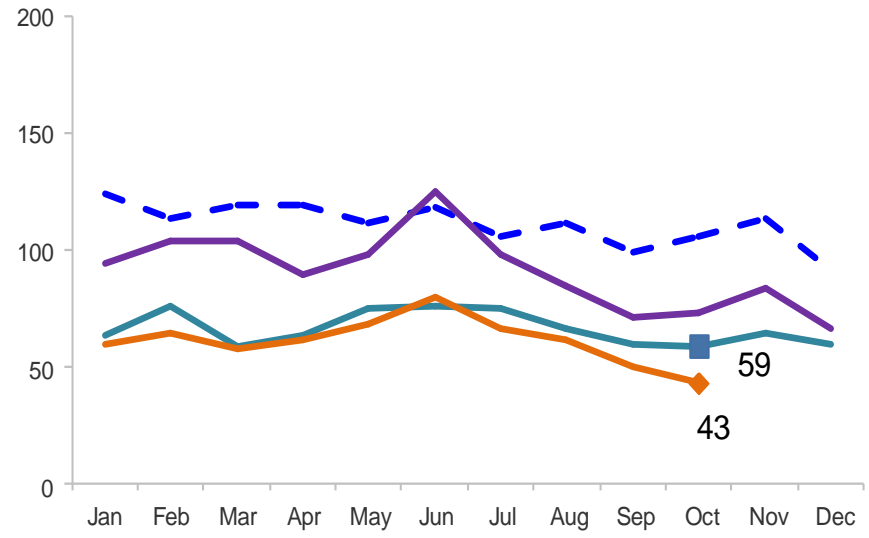
Monthly Average Daily Population

January 2013 – October 2016

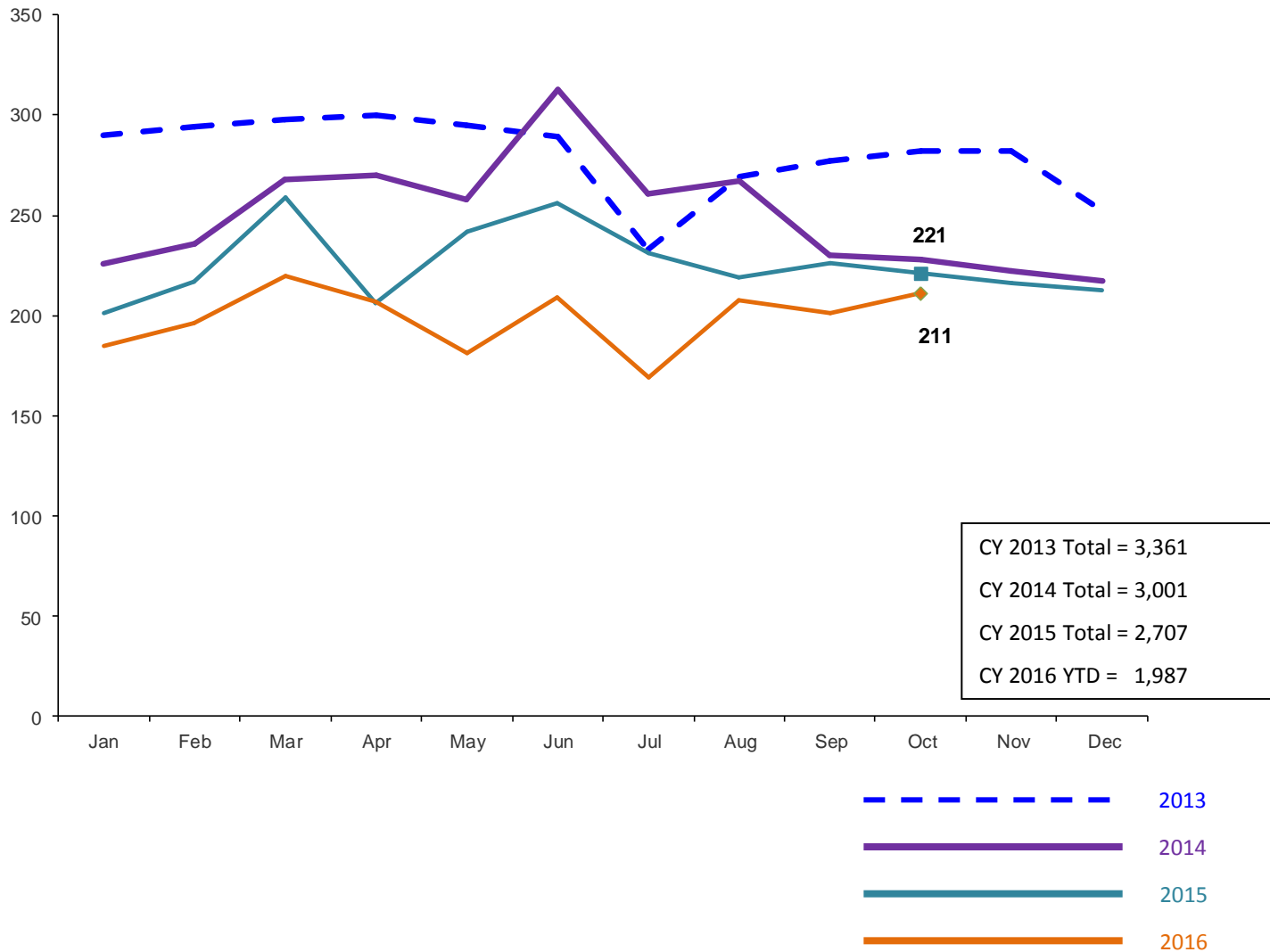
Secure Detention



Non-Secure Detention

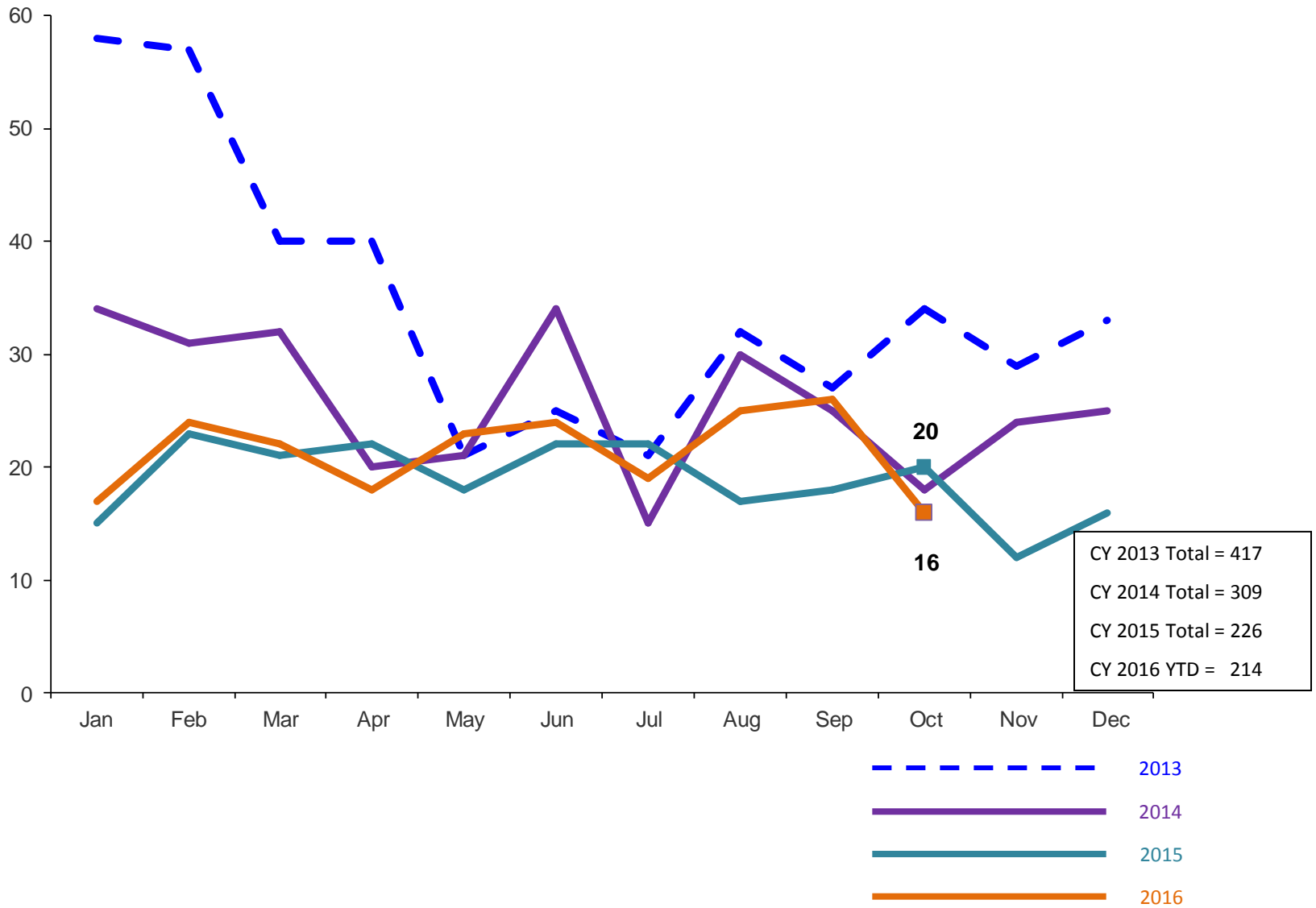


Total Monthly Releases from Detention January 2013 – October 2016 (Monthly Total)



Close to Home Intakes*

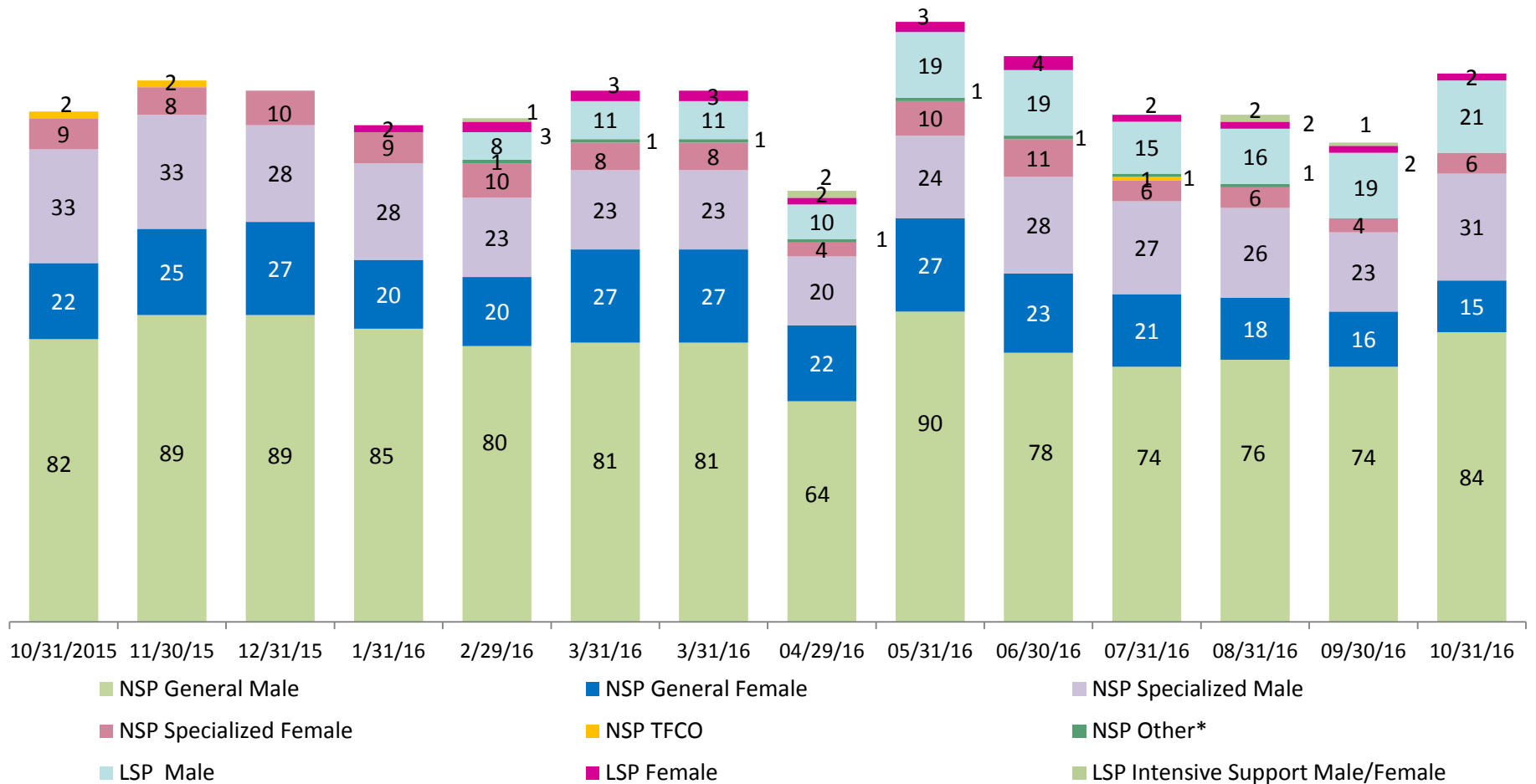
January 2013 – October 2016 (Monthly Total)



*Beginning in December 2015 Close to Home Intakes include LSP as well as NSP.

Close to Home Placement, in 24-hour Care

October 2015 – October 2016 (Point-in-Time)

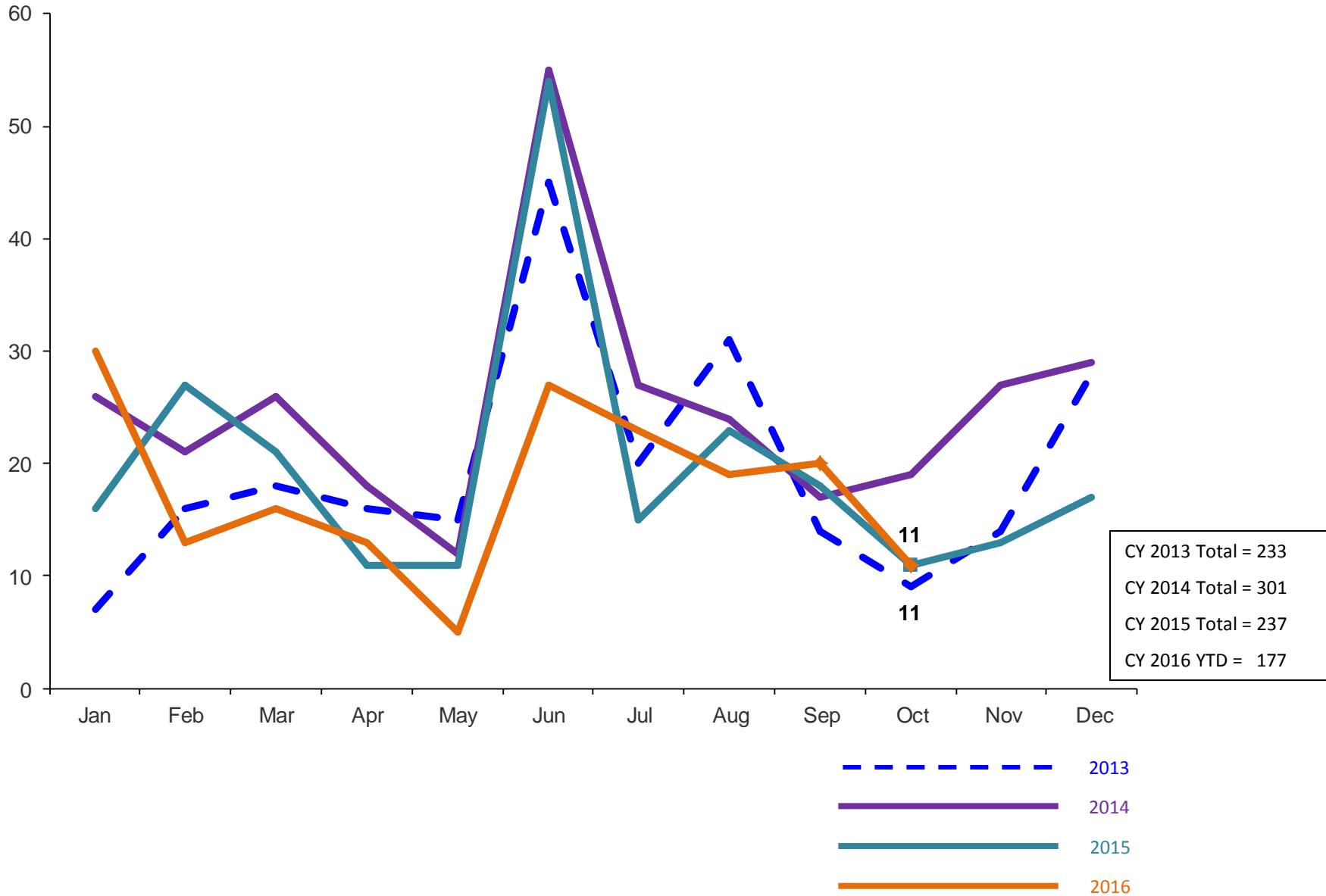


Number in Placement													
	10/31/15	11/30/15	12/31/15	1/31/16	2/29/16	3/31/16	4/29/16	5/31/16	6/30/16	7/31/16	8/31/16	9/30/16	10/31/16
NSP	148	157	154	142	134	140	111	152	141	130	127	117	136
LSP	0	0	2	6	12	14	14	22	23	17	20	22	23

*NSP Other includes youth in child welfare placements.

Releases from Close to Home Placement to Aftercare

February 2013 – October 2016 (Monthly Total)



CY 2013 Total = 233
 CY 2014 Total = 301
 CY 2015 Total = 237
 CY 2016 YTD = 177

Appendix

Figure 1: SCR Intakes by Borough, AUG 15 - OCT 15 and AUG 16 - OCT 16

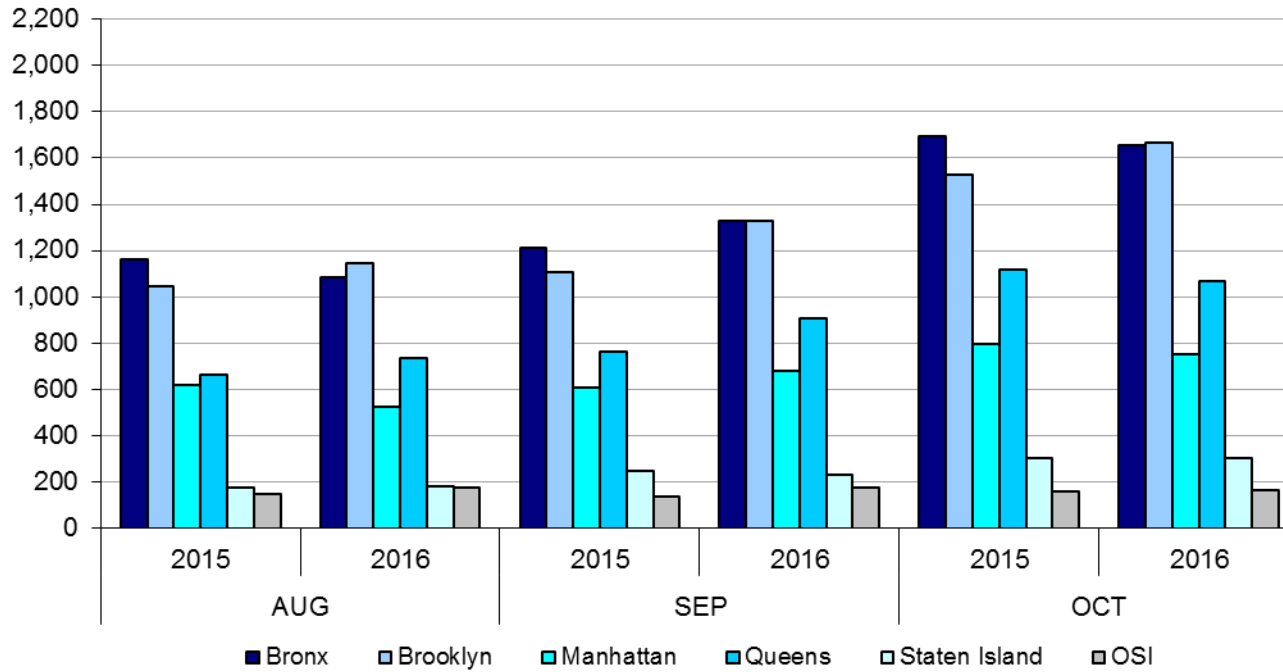


Table 1 - SCR Intake Changes by Borough, AUG 15 - OCT 15 and AUG 16 - OCT 16

Month	Year	Bronx	Brooklyn	Manhattan	Queens	Staten Island	OSI	Other	Total
AUG	2015	1,164	1,048	620	662	175	146	124	3,939
	2016	1,083	1,146	526	734	179	177	154	3,999
	% Change	-7.0%	9.4%	-15.2%	10.9%	2.3%	21.2%	24.2%	1.5%
SEP	2015	1,210	1,107	610	762	245	138	149	4,221
	2016	1,329	1,328	680	908	230	173	168	4,816
	% Change	9.8%	20.0%	11.5%	19.2%	-6.1%	25.4%	12.8%	14.1%
OCT	2015	1,694	1,526	797	1,117	304	158	129	5,725
	2016	1,656	1,666	754	1,066	304	166	169	5,781
	% Change	-2.2%	9.2%	-5.4%	-4.6%	0.0%	5.1%	31.0%	1.0%
Total	2015	4,068	3,681	2,027	2,541	724	442	402	13,885
	2016	4,068	4,140	1,960	2,708	713	516	491	14,596
	% Change	0.0%	12.5%	-3.3%	6.6%	-1.5%	16.7%	22.1%	5.1%

Figure 2: Citywide SCR Intakes by Reporter Group, AUG 15 - OCT 15 and AUG 16 - OCT 16

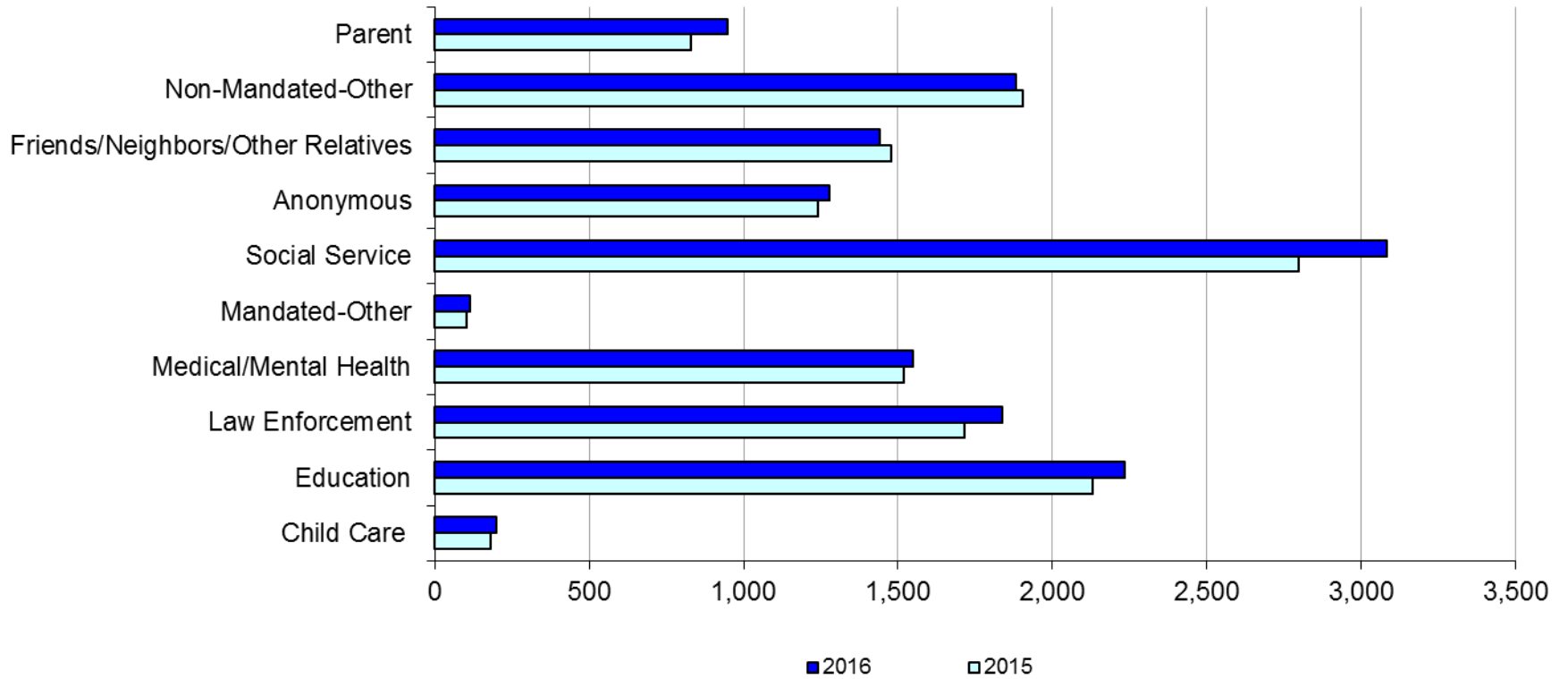
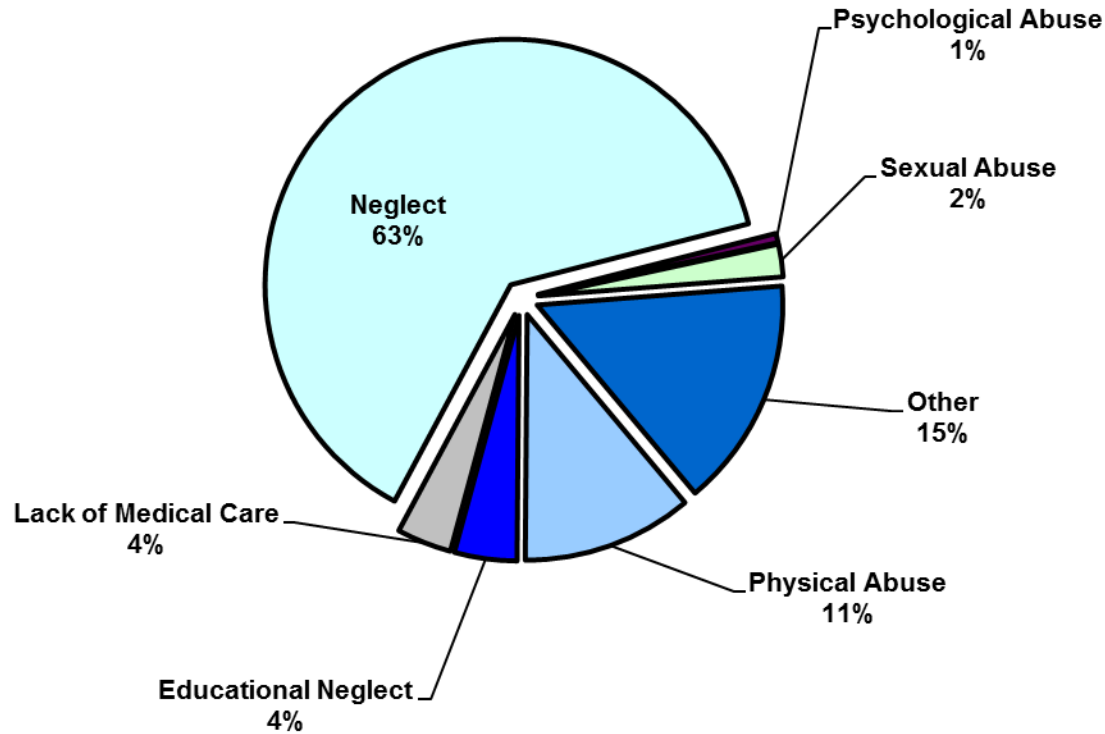


Table 2 - SCR Intakes by Reporter Group, AUG 15 - OCT 15 and AUG 16 - OCT 16

Year	Child Care/ Substitute Care Personnel	Educational Personnel	Law Enforcement	Medical/ Mental Health Personnel	Mandated- Other	Social Service Personnel	Anonymous	Friends/ Neighbors/ Other Relatives	Non-Mandated- Other	Parent	Foster Parent	Total
Bronx												
2015	43	612	458	458	36	835	378	437	598	212	0	4,067
2016	62	683	472	429	29	878	351	380	557	227	0	4,068
% Change	44.2%	11.6%	3.1%	-6.3%	-19.4%	5.1%	-7.1%	-13.0%	-6.9%	7.1%	--	0.0%
Brooklyn												
2015	53	621	506	364	24	635	368	423	464	222	1	3,681
2016	45	684	601	407	38	797	365	437	505	261	2	4,142
% Change	-15.1%	10.1%	18.8%	11.8%	58.3%	25.5%	-0.8%	3.3%	8.8%	17.6%	100.0%	12.5%
Manhattan												
2015	30	248	318	230	16	438	166	183	296	98	1	2,024
2016	23	246	278	228	13	437	172	181	269	112	0	1,959
% Change	-23.3%	-0.8%	-12.6%	-0.9%	-18.8%	-0.2%	3.6%	-1.1%	-9.1%	14.3%	-100.0%	-3.2%
Queens												
2015	17	483	260	288	16	567	195	265	303	146	0	2,540
2016	29	451	273	292	22	602	252	281	333	173	0	2,708
% Change	70.6%	-6.6%	5.0%	1.4%	37.5%	6.2%	29.2%	6.0%	9.9%	18.5%	--	6.6%
Staten Island												
2015	10	129	80	88	1	104	75	114	86	37	0	724
2016	7	122	78	74	4	134	83	91	75	43	2	713
% Change	-30.0%	-5.4%	-2.5%	-15.9%	300.0%	28.8%	10.7%	-20.2%	-12.8%	16.2%	--	-1.5%
OSI												
2015	25	18	19	40	4	75	37	24	120	75	4	441
2016	25	27	32	55	5	111	29	37	97	96	4	518
% Change	0.0%	50.0%	68.4%	37.5%	25.0%	48.0%	-21.6%	54.2%	-19.2%	28.0%	0.0%	17.5%
Other												
2015	4	18	73	50	6	142	20	30	38	39	0	420
2016	8	22	102	65	4	124	27	35	46	37	0	470
% Change	100.0%	22.2%	39.7%	30.0%	-33.3%	-12.7%	35.0%	16.7%	21.1%	-5.1%	--	11.9%
Citywide												
2015	182	2,129	1,714	1,518	103	2,796	1,239	1,476	1,905	829	6	13,897
2016	199	2,235	1,836	1,550	115	3,083	1,279	1,442	1,882	949	8	14,578
% Change	9.3%	5.0%	7.1%	2.1%	11.7%	10.3%	3.2%	-2.3%	-1.2%	14.5%	33.3%	4.9%

Figure 3: SCR Allegations, AUG 16 – OCT 16



Total Allegations = 37,776

Allegations are grouped as follows: Physical Abuse - burn, fatality, fracture, choking, twisting, shaking, excessive corporal punishment, internal injuries, lacerations, bruises, welts, poisoning, noxious substances; Educational Neglect – educational neglect; Lack of Medical Care – lack of medical care; Neglect - inadequate guardianship, inadequate food, clothing, shelter, lack of supervision, malnutrition, failure to thrive, swelling, dislocations, sprains; Psychological Abuse - isolation, emotional neglect; Sexual Abuse – sexual abuse; and Other -parental drug use, child drug use, abandonment, inappropriate custodial conduct.

Table 3 - SCR Allegations, AUG 15 - OCT 15 and AUG 16 - OCT 16

Year	Physical Abuse	Educational Neglect	Lack of Medical Care	Neglect	Psychological Abuse	Sexual Abuse	Other	Total
Bronx								
2015	1,242	519	429	7,728	47	244	1,765	11,974
2016	1,132	568	385	7,036	68	220	1,600	11,009
% Change	-8.9%	9.4%	-10.3%	-9.0%	44.7%	-9.8%	-9.3%	-8.1%
Brooklyn								
2015	1,192	511	339	6,414	40	286	1,507	10,289
2016	1,187	479	389	6,695	42	232	1,598	10,622
% Change	-0.4%	-6.3%	14.7%	4.4%	5.0%	-18.9%	6.0%	3.2%
Manhattan								
2015	404	195	166	2663	26	95	624	4,173
2016	444	174	182	2721	33	79	651	4,284
% Change	9.9%	-10.8%	9.6%	2.2%	26.9%	-16.8%	4.3%	2.7%
Queens								
2015	837	221	206	3,919	41	118	1,038	6,380
2016	829	213	236	4,098	63	139	1,047	6,625
% Change	-1.0%	-3.6%	14.6%	4.6%	53.7%	17.8%	0.9%	3.8%
Staten Island								
2015	182	94	78	1,359	8	40	417	2,178
2016	184	73	62	1,339	10	42	425	2,135
% Change	1.1%	-22.3%	-20.5%	-1.5%	25.0%	5.0%	1.9%	-2.0%
OSI								
2015	219	33	57	1,083	17	60	150	1,619
2016	346	29	63	1,361	8	74	158	2,039
% Change	58.0%	-12.1%	10.5%	25.7%	-52.9%	23.3%	5.3%	25.9%
Other								
2015	113	31	46	695	6	32	256	1,179
2016	121	20	45	608	8	25	235	1,062
% Change	7.1%	-35.5%	-2.2%	-12.5%	33.3%	-21.9%	-8.2%	-9.9%
Citywide								
2015	4,189	1,604	1,321	23,861	185	875	5,757	37,792
2016	4,243	1,556	1,362	23,858	232	811	5,714	37,776
% Change	1.3%	-3.0%	3.1%	0.0%	25.4%	-7.3%	-0.7%	0.0%

**TABLE 4 - Child Welfare Preventive Cases
Opened and Closed
January 2013 to October 2016**

Month	Opened Cases	Closed Cases
2013		
Jan-13	753	884
Feb-13	742	916
Mar-13	801	1,171
Apr-13	785	988
May-13	682	1,337
Jun-13	775	780
Jul-13	802	1,004
Aug-13	777	1,084
Sep-13	727	724
Oct-13	780	765
Nov-13	725	685
Dec-13	946	552
2014		
Jan-14	841	640
Feb-14	885	679
Mar-14	998	874
Apr-14	919	896
May-14	919	888
Jun-14	890	762
Jul-14	973	1,077
Aug-14	826	943
Sep-14	841	705
Oct-14	835	819
Nov-14	677	638
Dec-14	1,062	721
2015		
Jan-15	728	716
Feb-15	902	590
Mar-15	1,122	686
Apr-15	977	743
May-15	914	842
Jun-15	1,068	797
Jul-15	899	1,070
Aug-15	893	891
Sep-15	764	847
Oct-15	749	772
Nov-15	746	652
Dec-15	1,013	707
2016		
Jan-16	792	668
Feb-16	897	667
Mar-16	1,029	869
Apr-16	836	794
May-16	890	709
Jun-16	996	700
Jul-16	842	784
Aug-16	897	755
Sep-16	821	645
Oct-16	762	517

**Table 5 - Referrals to Child Welfare Preventive Services by Source
January 2013 to October 2016**

Month	Total Referrals	Division of Child Protection	Foster Care Agencies	PPRS Transfer	School	Self	Other Sources*
2013							
Jan-13	1,474	74.1%	1.2%	7.3%	1.2%	3.7%	12.5%
Feb-13	1,308	75.8%	1.1%	8.0%	1.6%	2.9%	10.6%
Mar-13	1,270	73.5%	1.2%	6.7%	2.4%	3.9%	12.3%
Apr-13	1,421	77.9%	0.8%	7.4%	0.9%	3.0%	10.1%
May-13	1,320	68.4%	0.5%	10.2%	1.5%	3.8%	15.5%
Jun-13	953	69.2%	1.2%	9.4%	2.6%	5.0%	12.6%
Jul-13	1,014	66.3%	1.9%	14.4%	1.6%	3.9%	11.9%
Aug-13	1,212	70.5%	0.7%	11.8%	0.7%	4.7%	11.6%
Sep-13	1,262	64.0%	2.1%	11.3%	1.7%	6.7%	14.2%
Oct-13	1,319	61.0%	1.1%	9.0%	2.9%	7.5%	18.5%
Nov-13	1,249	55.9%	1.6%	10.5%	4.6%	9.2%	18.3%
Dec-13	1,464	62.2%	1.2%	8.2%	2.3%	9.2%	17.0%
CY 2013	15,266	68.3%	1.2%	9.4%	2.0%	5.3%	13.8%
2014							
Jan-14	1,537	70.0%	1.2%	6.6%	2.3%	5.8%	14.2%
Feb-14	1,334	69.7%	0.8%	8.4%	1.7%	5.5%	13.9%
Mar-14	1,612	70.0%	1.4%	8.6%	1.6%	5.3%	13.1%
Apr-14	1,525	70.2%	0.9%	7.6%	2.1%	3.7%	15.4%
May-14	1,580	74.4%	0.7%	8.3%	1.4%	5.2%	10.0%
Jun-14	1,550	78.6%	1.2%	6.3%	1.2%	3.2%	9.4%
Jul-14	1,659	79.6%	1.5%	6.7%	0.4%	4.2%	7.6%
Aug-14	1,395	72.2%	1.6%	10.8%	0.3%	4.9%	10.3%
Sep-14	1,597	49.4%	1.5%	7.6%	0.3%	4.5%	36.8%
Oct-14	1,634	68.2%	1.9%	10.0%	1.2%	4.6%	14.1%
Nov-14	1,311	66.4%	0.9%	14.3%	2.4%	3.9%	12.1%
Dec-14	1,785	71.1%	1.4%	8.8%	2.9%	4.8%	11.0%
CY 2014	18,519	70.1%	1.3%	8.6%	1.5%	4.6%	14.0%
2015							
Jan-15	1,430	74.4%	1.6%	8.7%	1.8%	3.8%	9.7%
Feb-15	1,538	76.5%	0.8%	8.1%	1.8%	4.7%	8.2%
Mar-15	1,798	74.6%	0.9%	7.3%	1.6%	4.8%	10.8%
Apr-15	1,719	78.2%	1.3%	7.2%	0.6%	3.5%	9.1%
May-15	1,561	77.2%	1.0%	5.1%	1.5%	4.5%	10.8%
Jun-15	1,716	77.4%	1.1%	7.7%	1.2%	3.5%	9.1%
Jul-15	1,511	79.6%	0.9%	7.2%	0.3%	3.8%	8.2%
Aug-15	1,418	79.3%	2.2%	7.8%	0.2%	3.1%	7.5%
Sep-15	1,209	72.1%	2.8%	10.4%	0.5%	5.5%	8.6%
Oct-15	1,338	70.4%	1.9%	8.3%	2.1%	5.8%	11.6%
Nov-15	1,220	68.2%	1.8%	9.6%	1.4%	6.2%	12.8%
Dec-15	1,526	73.5%	1.6%	8.0%	2.0%	5.0%	9.9%
2016							
Jan-16	1,370	73.6%	1.6%	8.2%	0.7%	5.4%	10.6%
Feb-16	1,436	75.8%	2.2%	7.8%	1.0%	3.8%	9.3%
Mar-16	1,557	72.0%	2.1%	8.8%	1.0%	4.6%	11.4%
Apr-16	1,378	76.1%	1.5%	7.4%	1.5%	3.5%	10.0%
May-16	1,386	73.4%	1.4%	8.7%	1.0%	4.7%	10.8%
Jun-16	1,564	77.2%	2.4%	6.2%	1.5%	4.1%	8.6%
Jul-16	1,338	80.3%	1.7%	6.4%	1.0%	4.2%	6.4%
Aug-16	1,385	79.1%	1.8%	7.1%	0.4%	4.0%	7.6%
Sep-16	1,297	77.8%	2.1%	7.5%	0.8%	4.5%	7.4%
Oct-16	1,241	70.7%	2.1%	7.8%	1.3%	5.4%	12.7%

*Other Community Sources includes the Department of Homeless Services, Family Court, FAP, Hospitals and Medical facilities, the NYC Housing Authority, Probation, and Sponsor Agencies.