

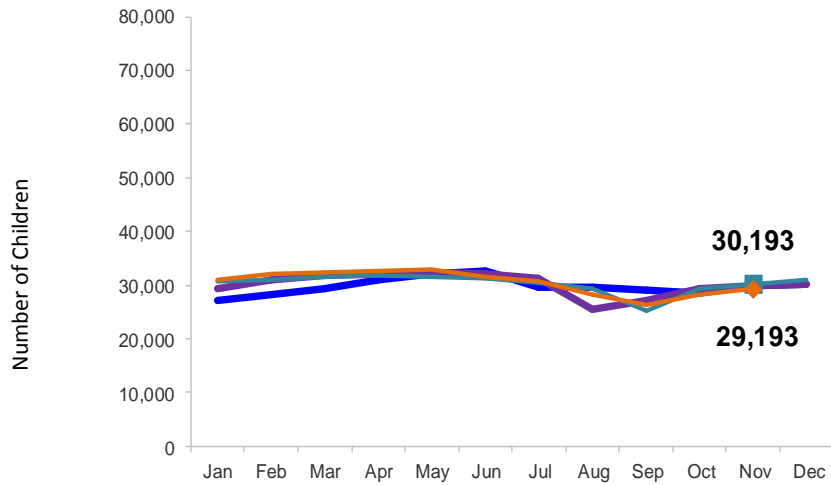


Flash

December 2016

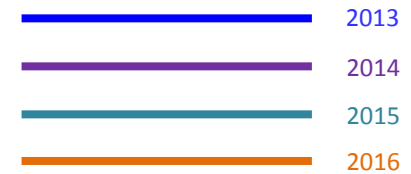
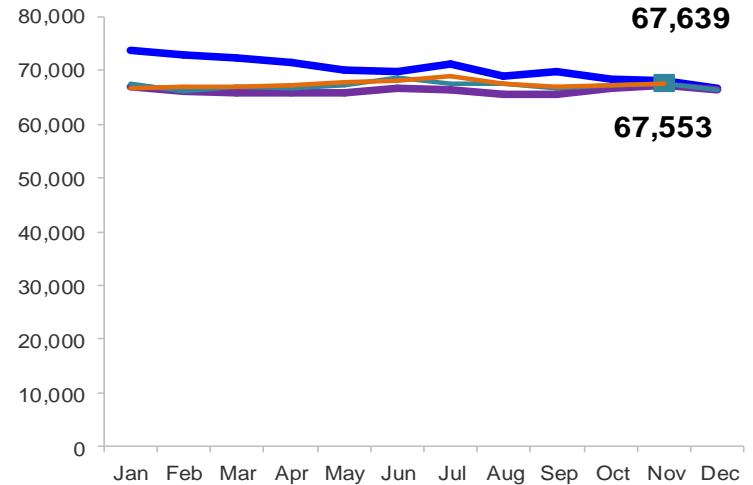
Children Enrolled in Contracted EarlyLearn Programs

January 2013 – November 2016 (End of Month)



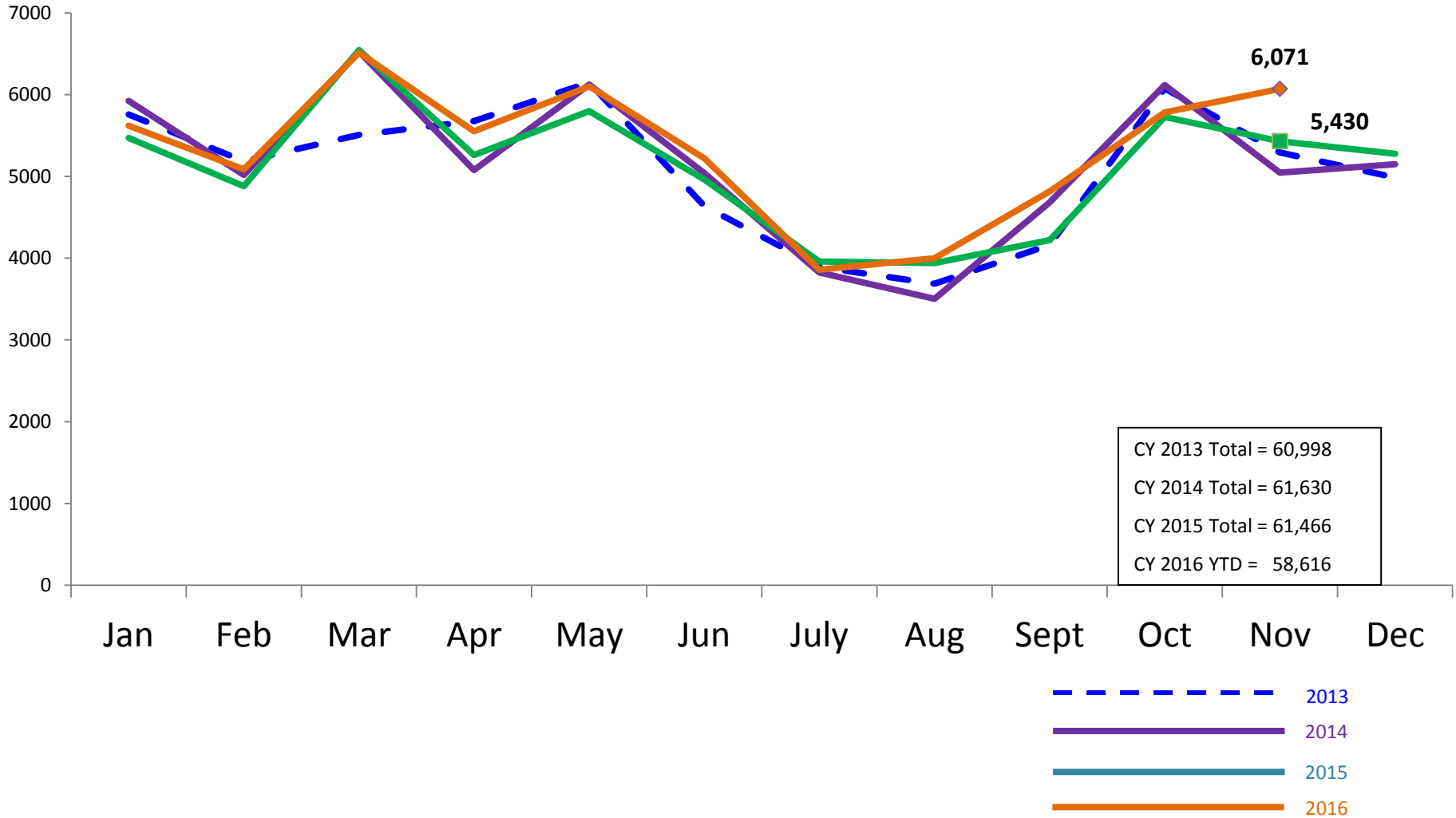
Children Using Vouchers for Child Care

January 2013 – November 2016 (End of Month)



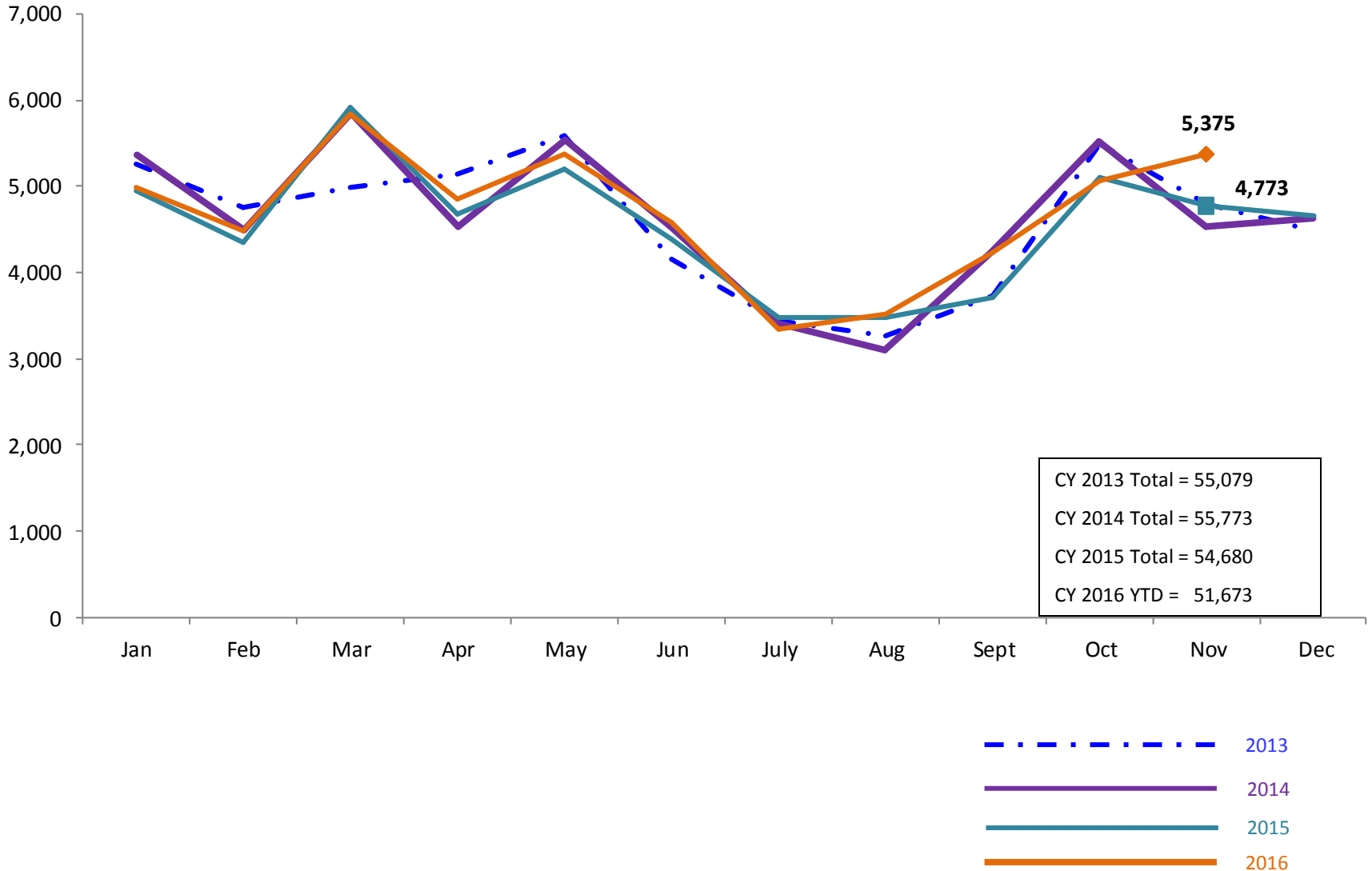
SCR Intakes

January 2013 – November 2016 (Monthly Total)



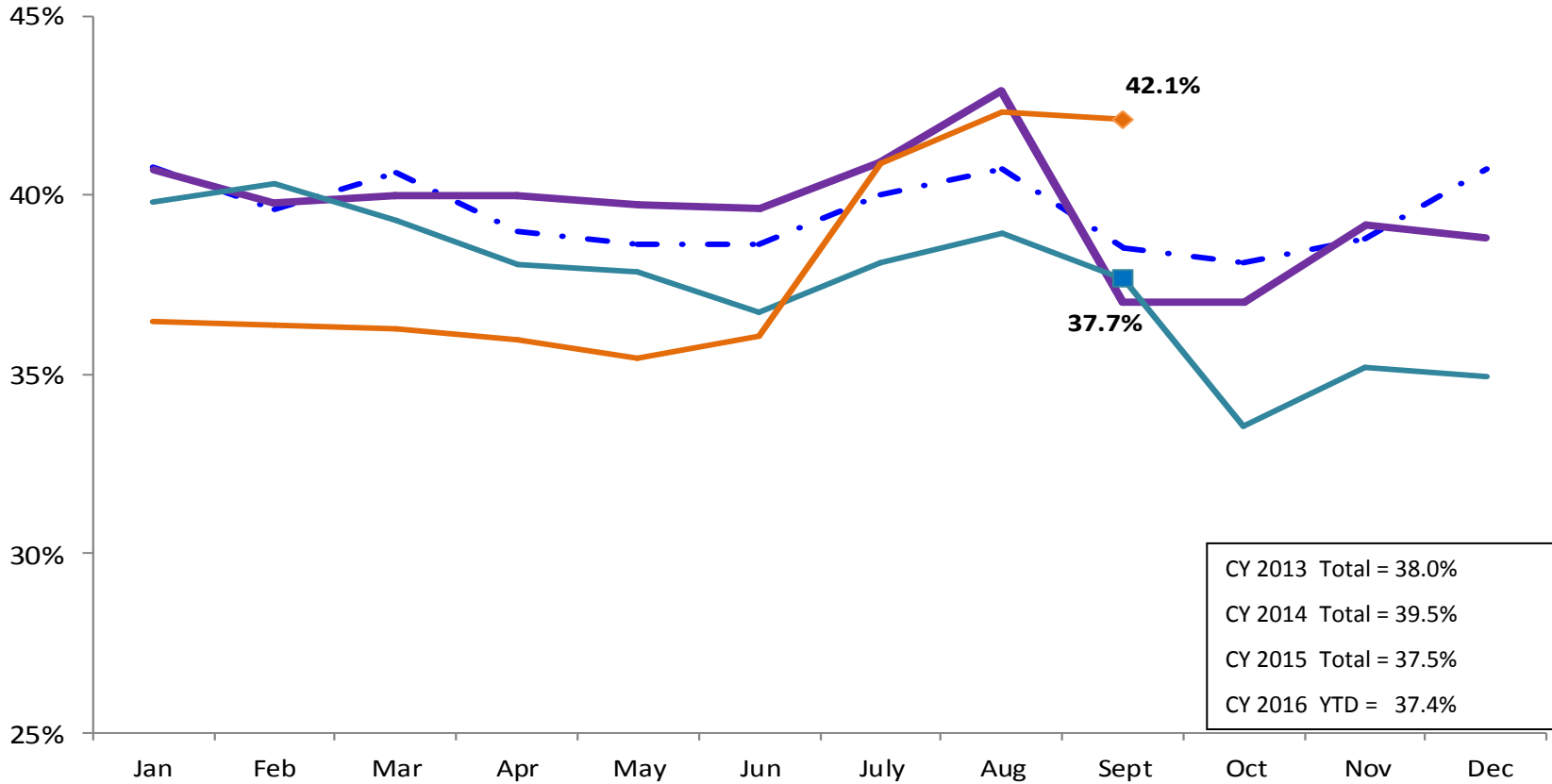
See Pages 28 through 32 of the Appendix for supporting data.

SCR Consolidated Investigations January 2013 – November 2016 (Monthly Total)



SCR Investigation Indication Rate

January 2013 – September 2016

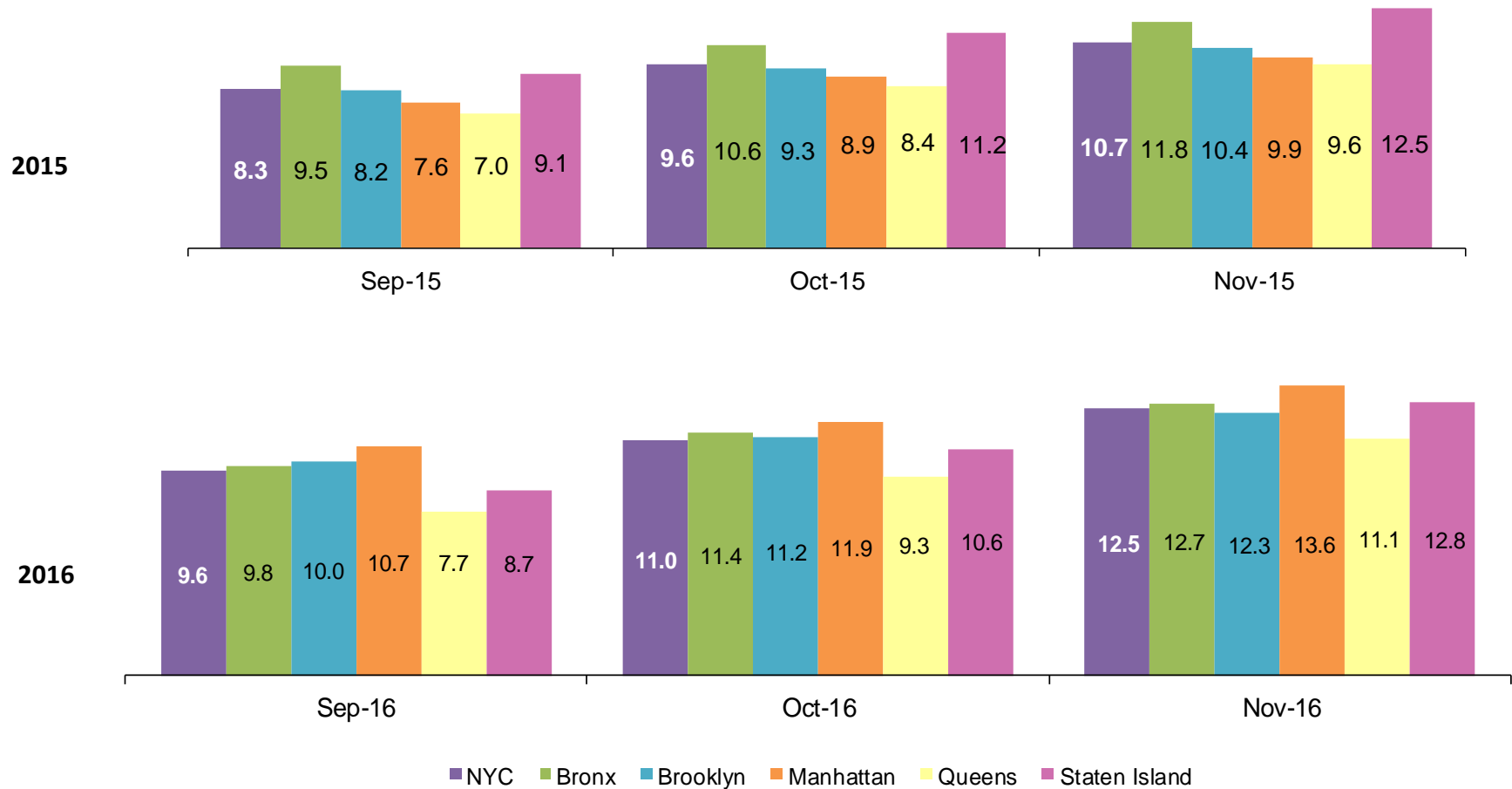


CY 2013 Total = 38.0%
 CY 2014 Total = 39.5%
 CY 2015 Total = 37.5%
 CY 2016 YTD = 37.4%

- 2013
- 2014
- 2015
- 2016

Average P/D Combined Caseload*

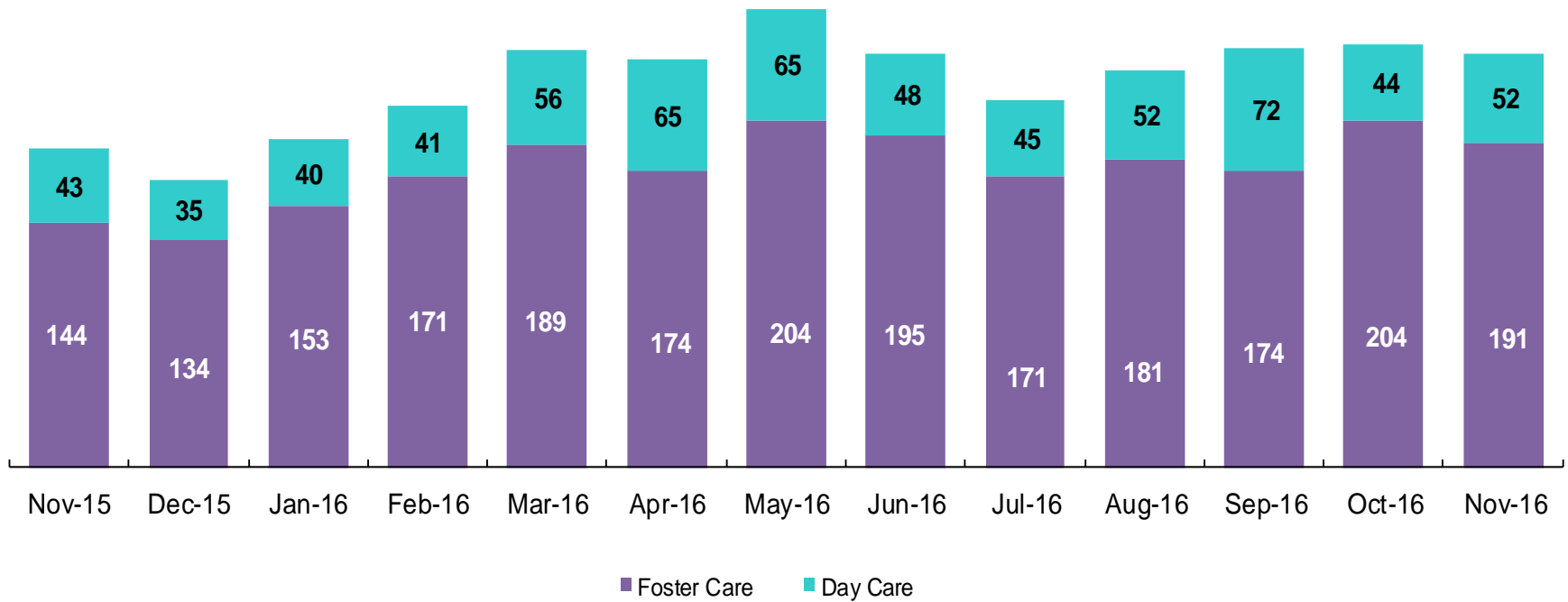
September 2015 – November 2015 & September 2016 – November 2016



* Caseloads are of protective/diagnostic caseworkers only and exclude the caseloads carried by Level I and Level II Supervisors.

OSI Investigations by Program

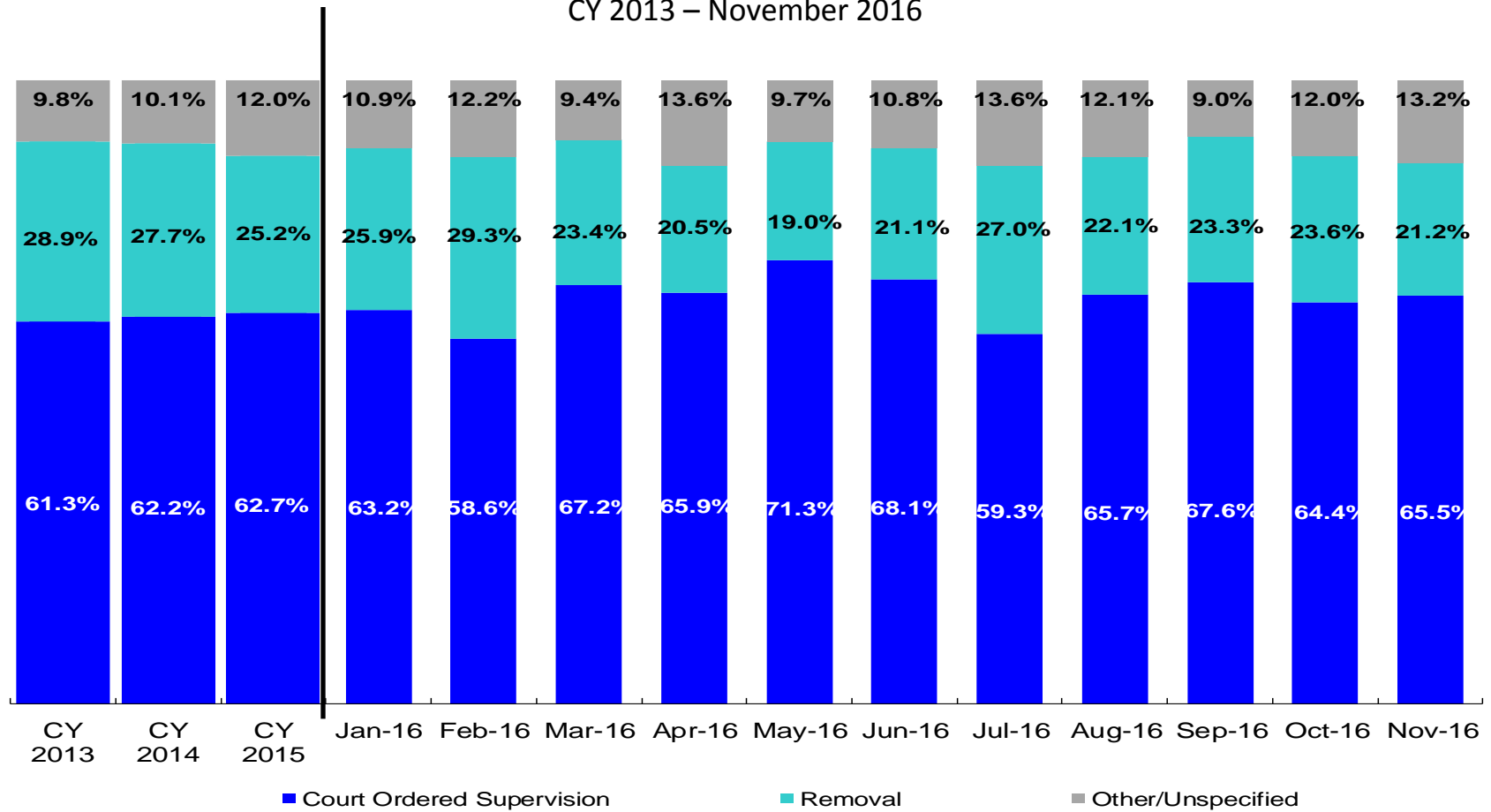
November 2015 – November 2016



	Nov 2015	Dec 2015	Jan 2016	Feb 2016	Mar 2016	Apr 2016	May 2016	Jun 2016	Jul 2016	Aug 2016	Sep 2016	Oct 2016	Nov 2016
Number of Investigations	187	169	193	212	245	239	269	243	216	233	246	248	243

Article 10 Total Filings & Filing Outcomes

CY 2013 – November 2016

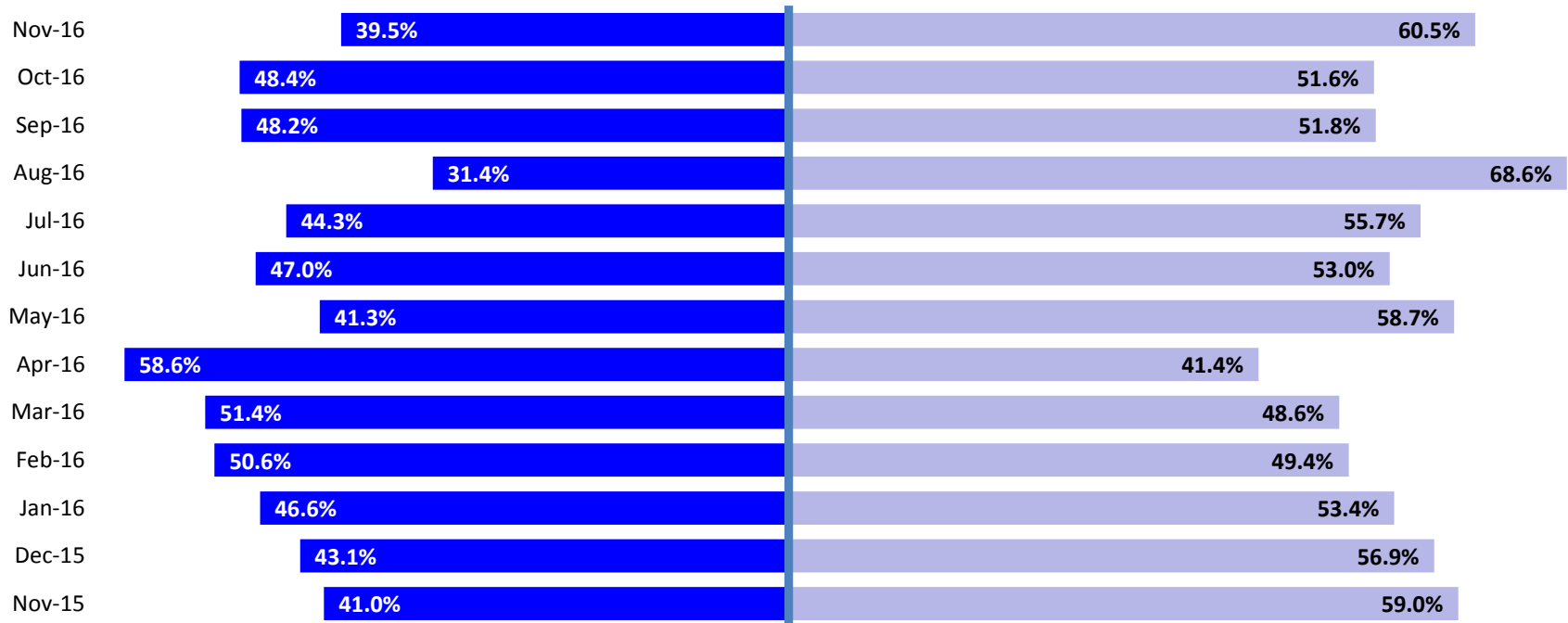


	CY 2013	CY 2014	CY 2015	Jan 2016	Feb 2016	Mar 2016	Apr 2016	May 2016	Jun 2016	Jul 2016	Aug 2016	Sep 2016	Oct 2016	Nov 2016
Article 10 Filings	9,318	9,900	10,257	737	830	890	883	790	868	777	922	853	1,322	1,050

Note: The category "Other/Unspecified" includes released with no supervision, no order issued and no outcome specified.

Article 10 Filing Removals

November 2015 – November 2016

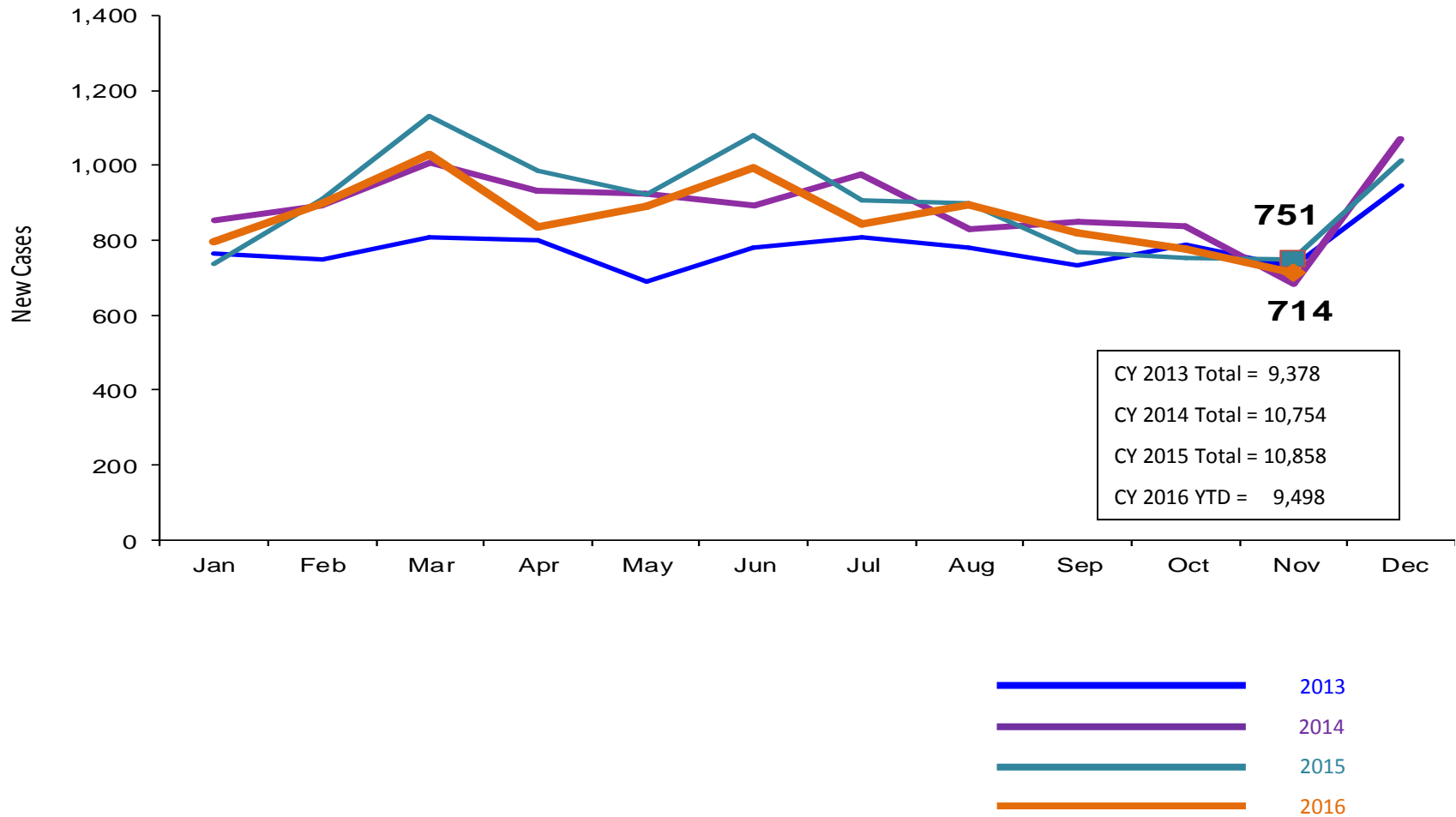


■ Pre-Filing Emergency Removals (court approved at initial hearing) ■ Post-Filing Removals (court ordered at initial hearing)

	Nov 2015	Dec 2015	Jan 2016	Feb 2016	Mar 2016	Apr 2016	May 2016	June 2016	July 2016	Aug 2016	Sep 2016	Oct 2016	Nov 2016
Number of Removals	166	195	191	243	208	181	150	183	210	204	199	312	223

New Child Welfare Preventive Cases*

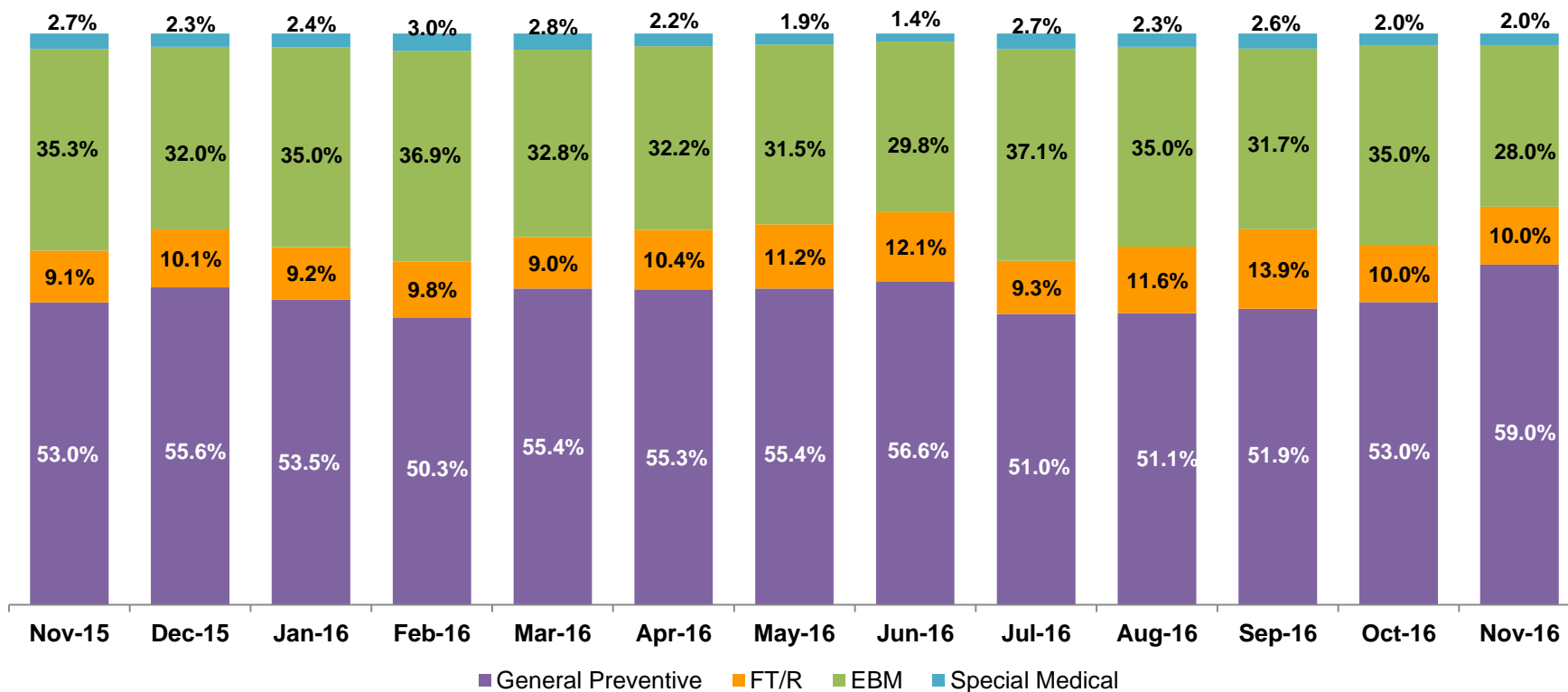
January 2013 – November 2016



*Notes: 1) New preventive cases do not include cases transferred from one preventive program to another. 2) See Pages 33 and 34 of the Appendix for supporting data.

New Child Welfare Preventive Cases by Program Type *

November 2015 – November 2016

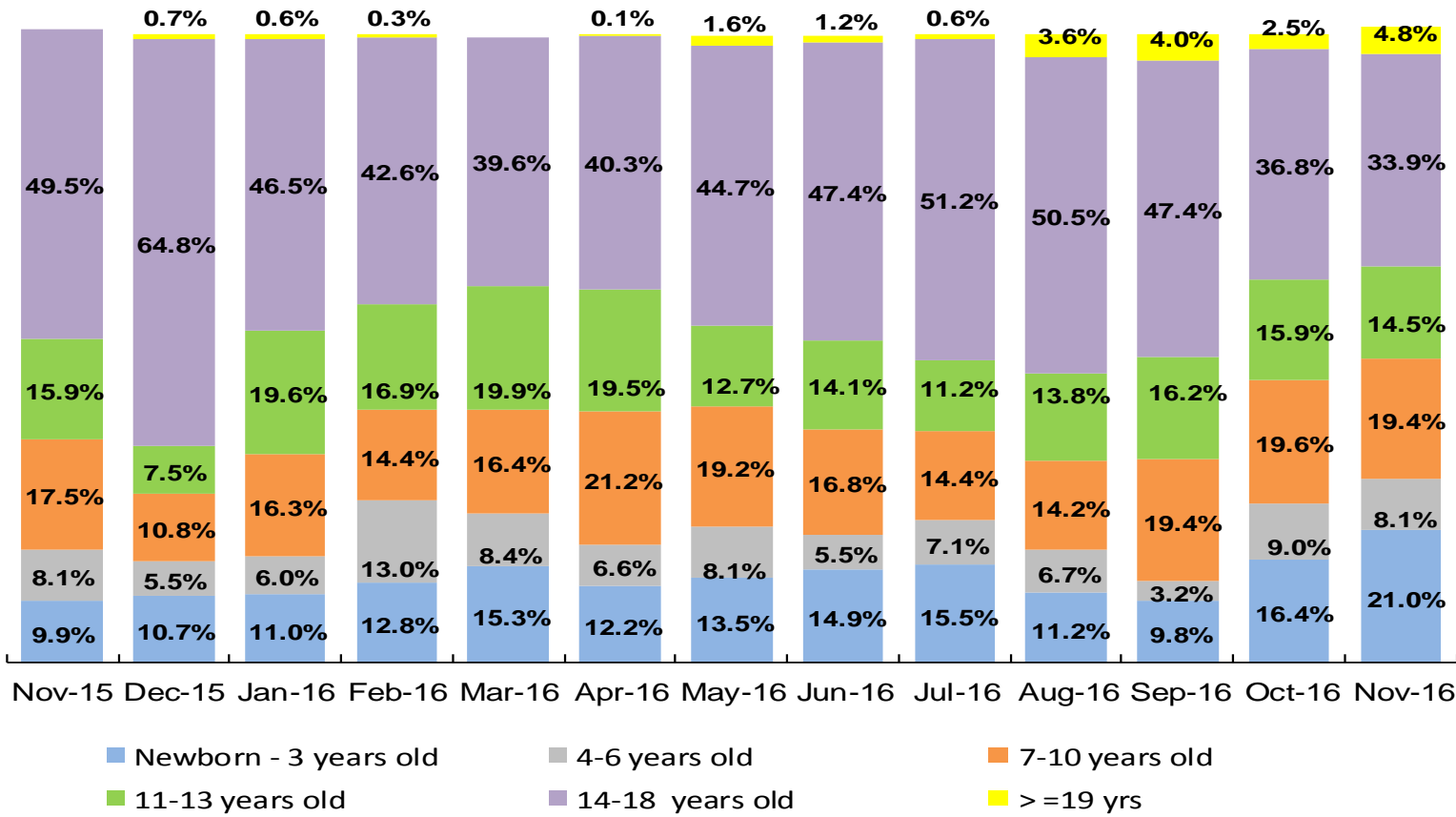


	Nov 2015	Dec 2015	Jan 2016	Feb 2016	Mar 2016	Apr 2016	May 2016	June 2016	July 2016	Aug 2016	Sep 2016	Oct 2016	Nov 2016
Number of New Preventive Cases	751	1015	797	900	1029	836	890	996	842	897	821	776	714

* New preventive cases exclude cases transferred from one preventive program to another.

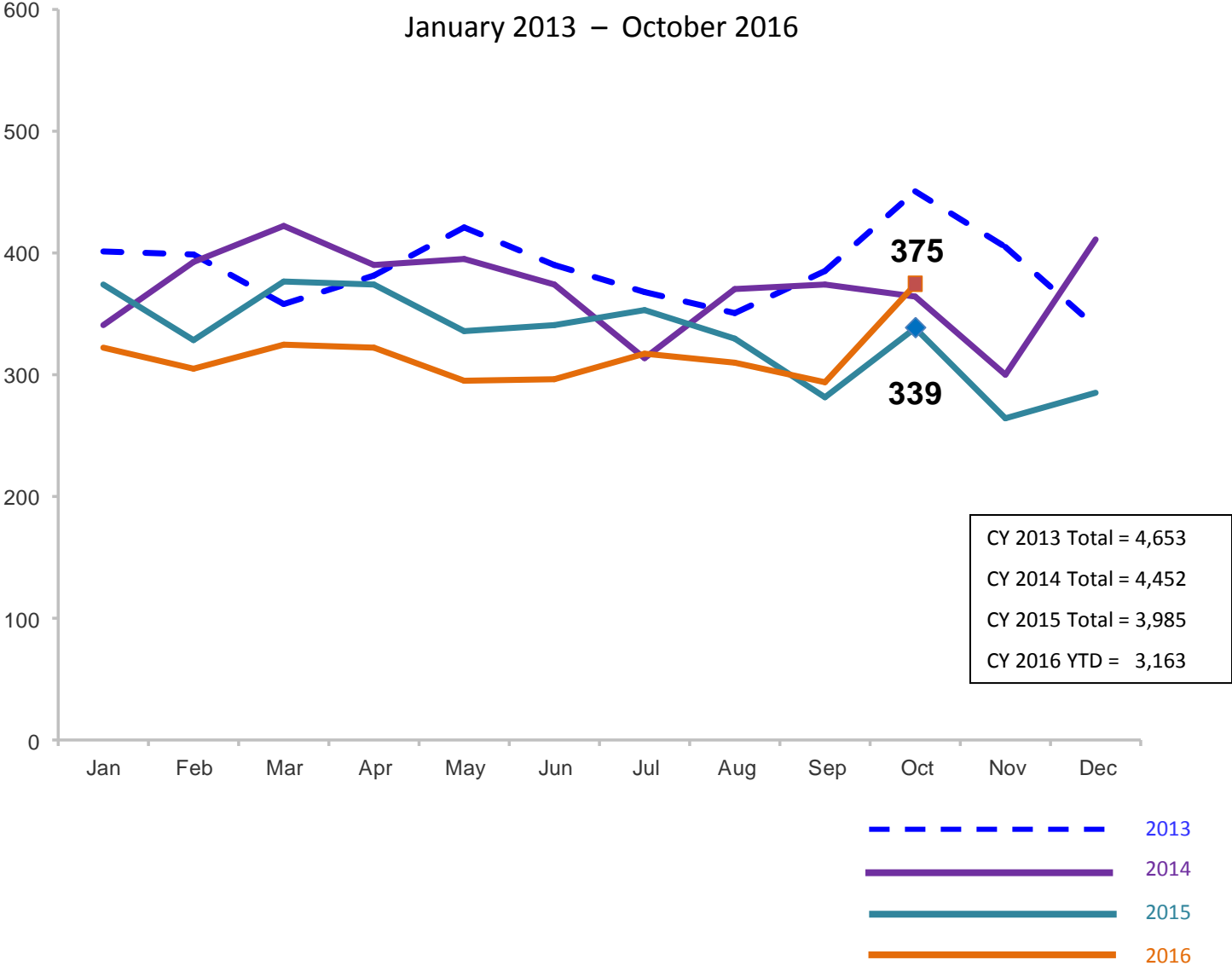
Average Pre-Placement Residential Monthly Population

November 2015 – November 2016



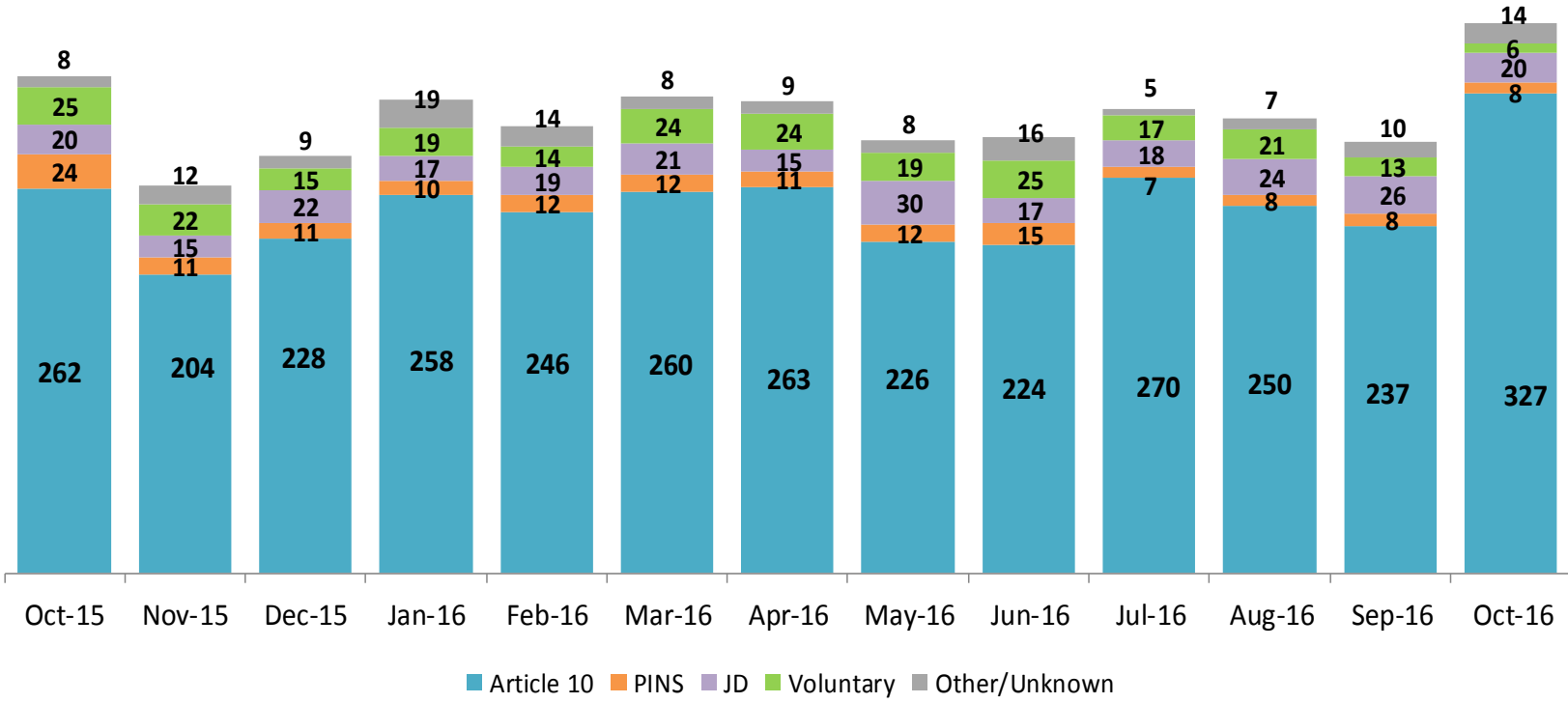
	Nov 2015	Dec 2015	Jan 2016	Feb 2016	Mar 2016	Apr 2016	May 2016	Jun 2016	Jul 2016	Aug 2016	Sep 2016	Oct 2016	Nov 2016
Average Number of Children	40	40	46	45	49	53	34	40	50	56	54	71	62

Total Monthly Placements January 2013 – October 2016



Reason for Initial Placements into Foster Care

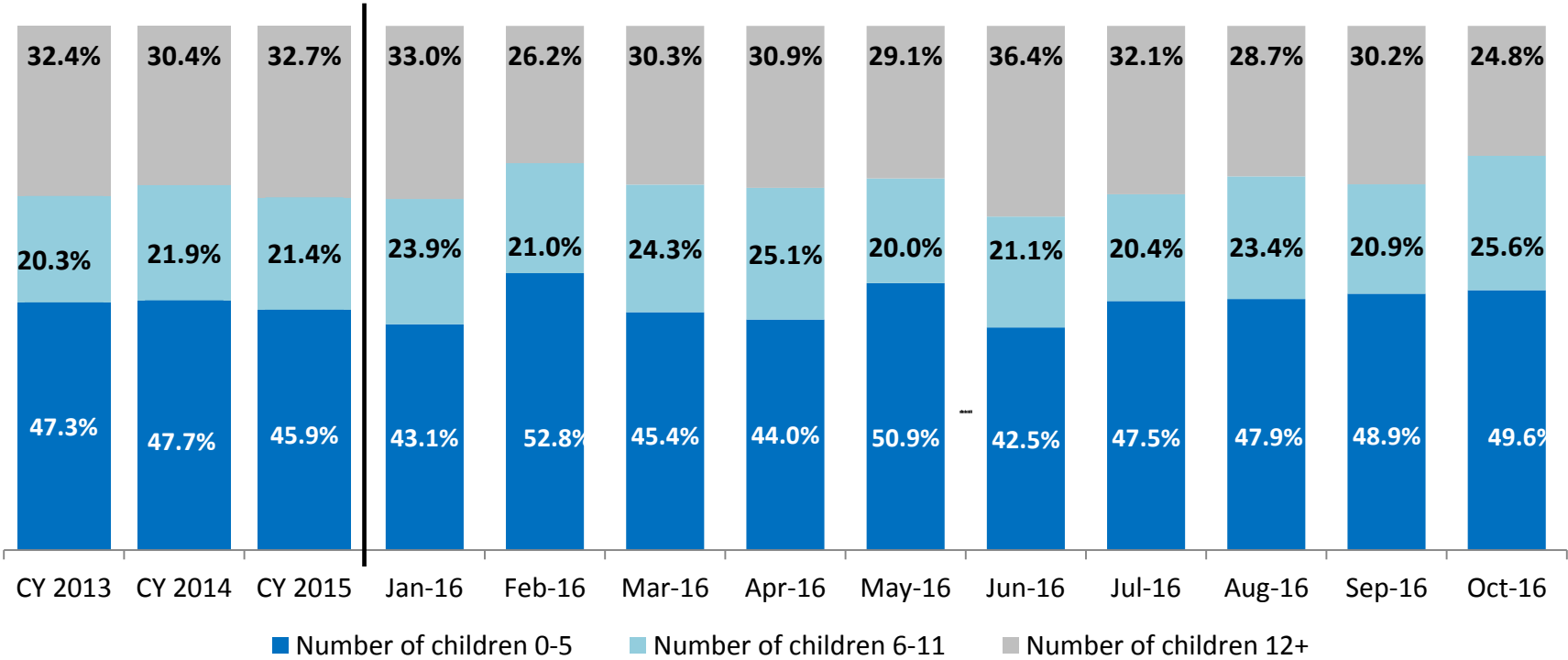
October 2015 – October 2016



	Oct 2015	Nov 2015	Dec 2015	Jan 2016	Feb 2016	Mar 2016	Apr 2016	May 2016	Jun 2016	Jul 2016	Aug 2016	Sep 2016	Oct 2016
Number of Placements	339	264	285	323	305	325	322	295	297	317	310	294	375

Placements* by Age

CY 2013 - October 2016

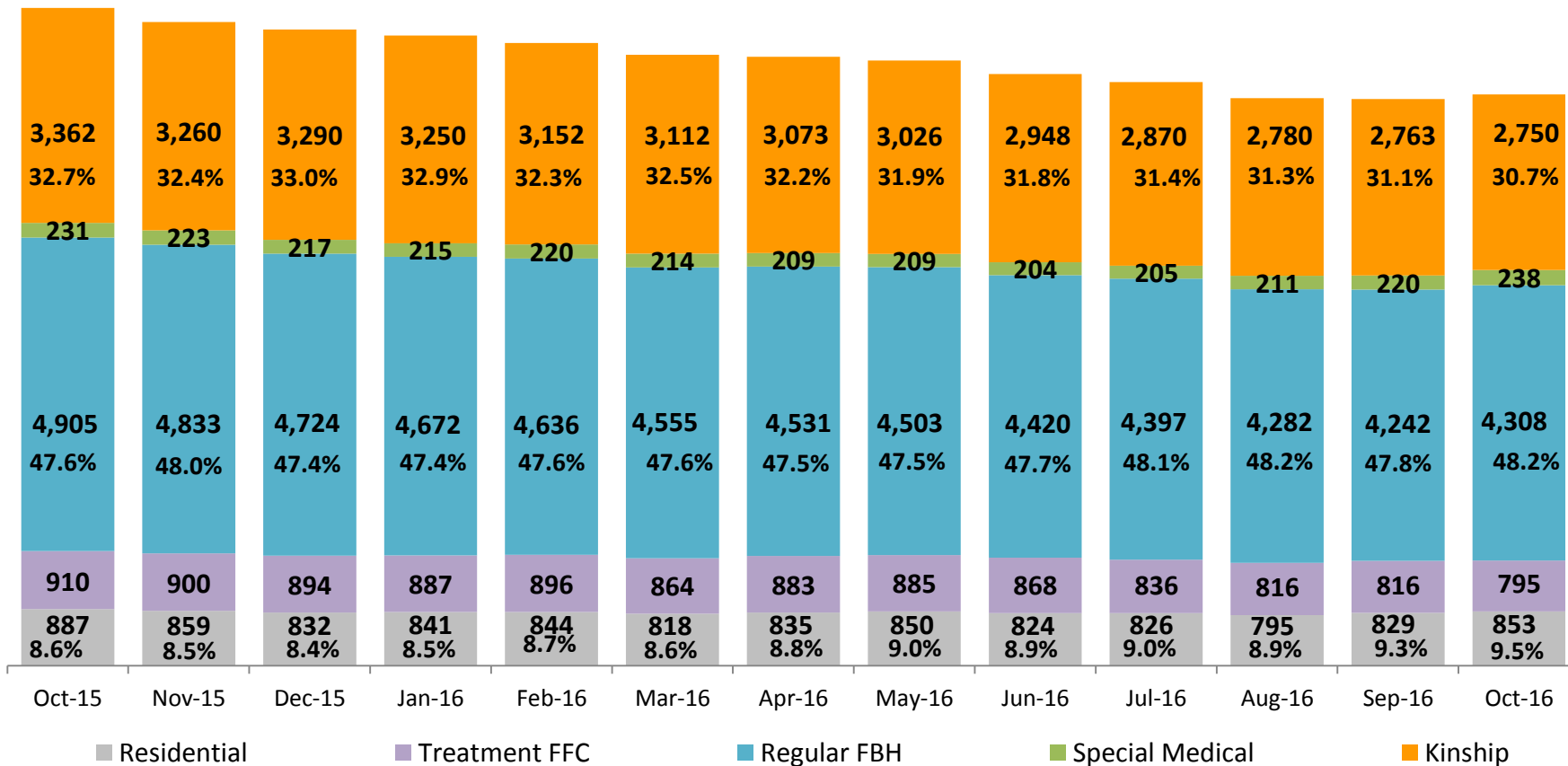


	CY 2013	CY 2014	CY 2015	Jan 2016	Feb 2016	Mar 2016	Apr 2016	May 2016	Jun 2016	Jul 2016	Aug 2016	Sep 2016	Oct 2016
Placements	4,283	4,160	3,760	306	286	304	307	265	280	299	286	268	355

*Excludes JD placements.

Children in Foster Care *

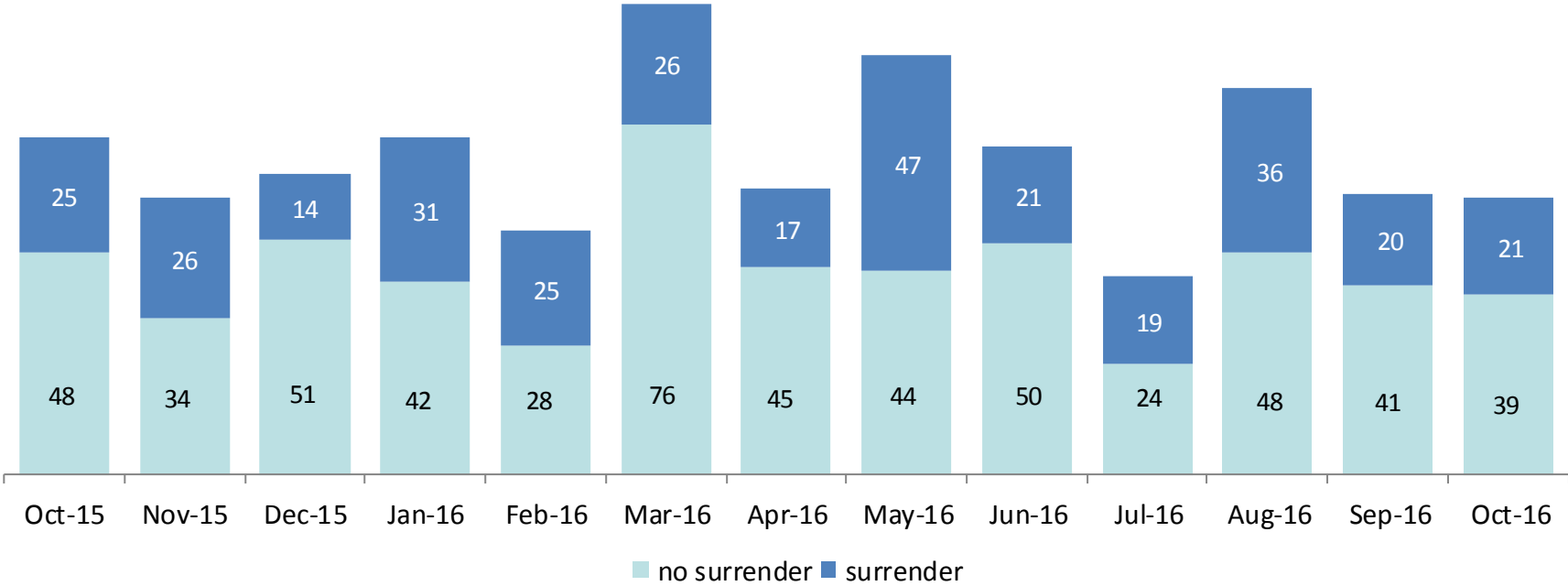
October 2015 – October 2016 (end of month)



	Oct 2015	Nov 2015	Dec 2015	Jan 2016	Feb 2016	Mar 2016	Apr 2016	May 2016	Jun 2016	Jul 2016	Aug 2016	Sep 2016	Oct 2016
Number in Foster Care	10,295	10,075	9,957	9,865	9,748	9,563	9,531	9,473	9,264	9,134	8,884	8,870	8,944

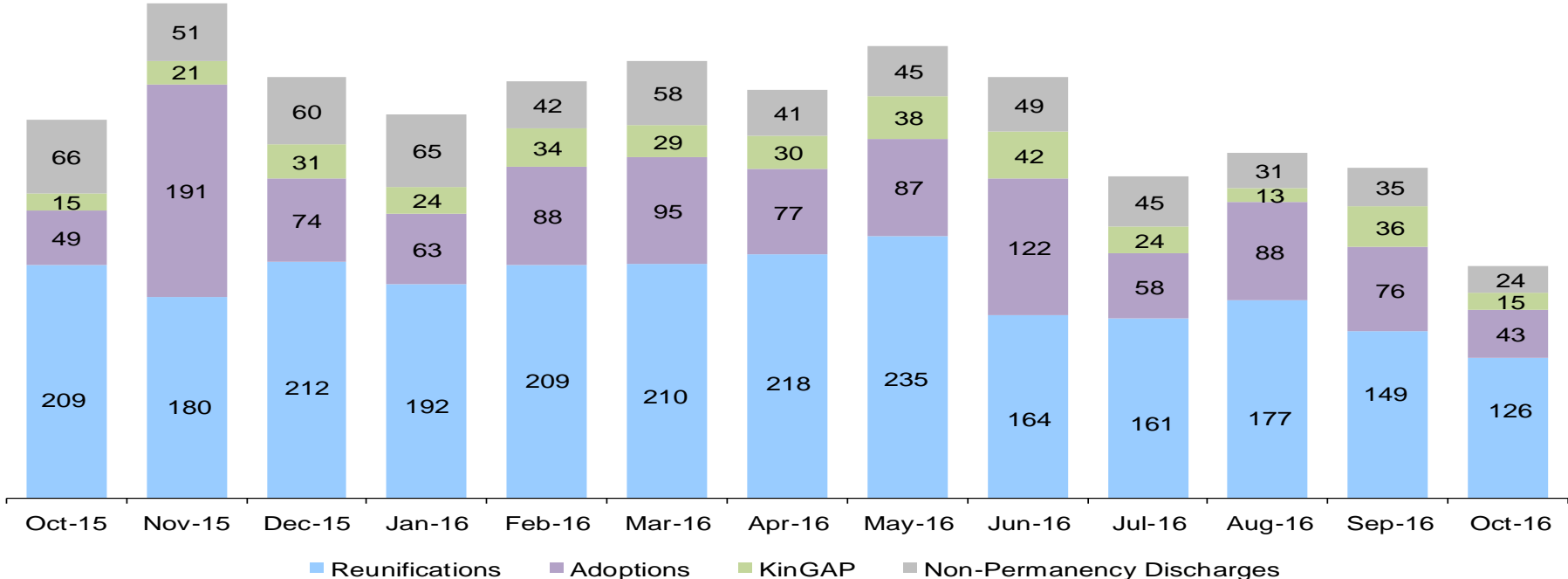
*Excludes JD placements and includes children in 24 hour care and approximately 200 young children who are living in foster homes or residential care facilities with their mothers who are in foster care (8D children).

Children Freed for Adoption, Surrender by at Least One Parent October 2015 – October 2016



	Oct 2015	Nov 2015	Dec 2015	Jan 2016	Feb 2016	Mar 2016	Apr 2016	May 2016	Jun 2016	Jul 2016	Aug 2016	Sep 2016	Oct 2016
Number Freed for Adoption	87	73	63	73	53	102	62	91	71	43	84	61	60

Permanency and Non-Permanency* Discharges from Foster Care** October 2015 – October 2016



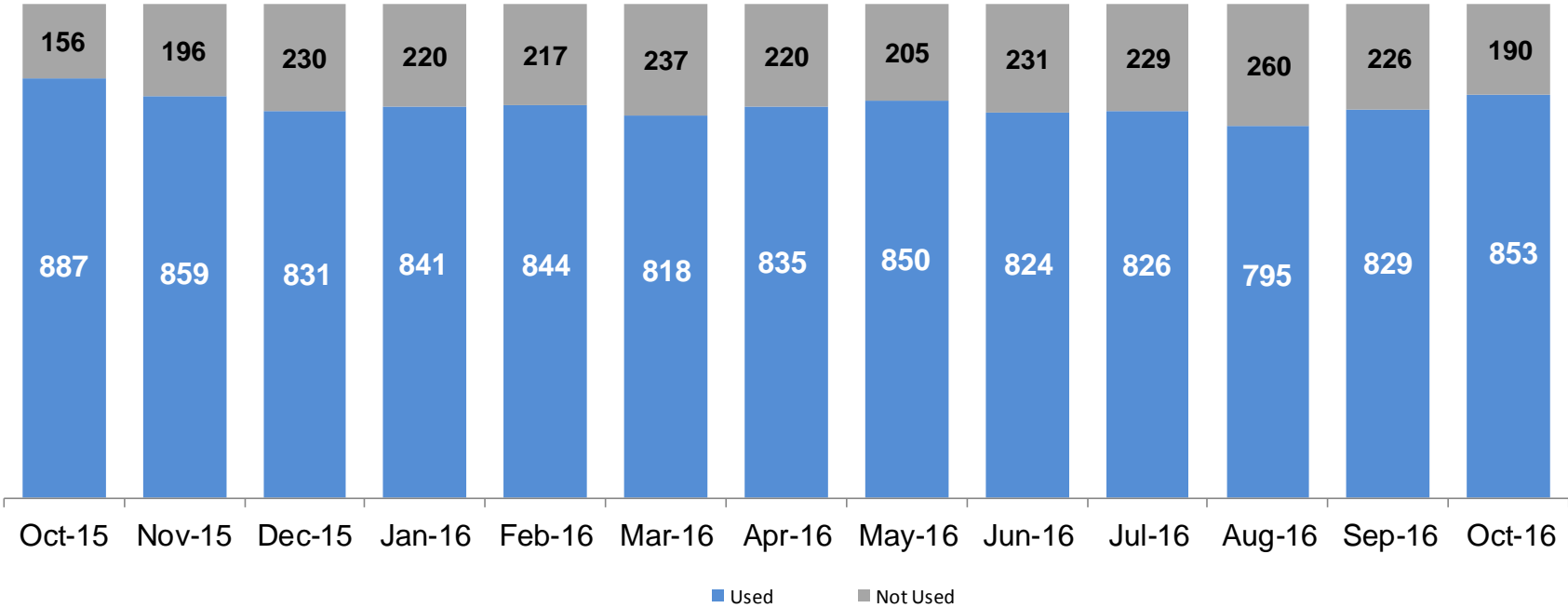
	Oct 2015	Nov 2015	Dec 2015	Jan 2016	Feb 2016	Mar 2016	Apr 2016	May 2016	Jun 2016	Jul 2016	Aug 2016	Sep 2016	Oct 2016
Number of Discharges	339	443	377	344	373	392	366	405	377	288	309	296	208

*Non-permanency discharges include AWOL, APPLA , other discharge destinations such as psychiatric institutions and correctional facilities and discharges with unspecified destinations.

**Excludes discharges of youth who entered care as a JD.

Residential Care Capacity and Utilization

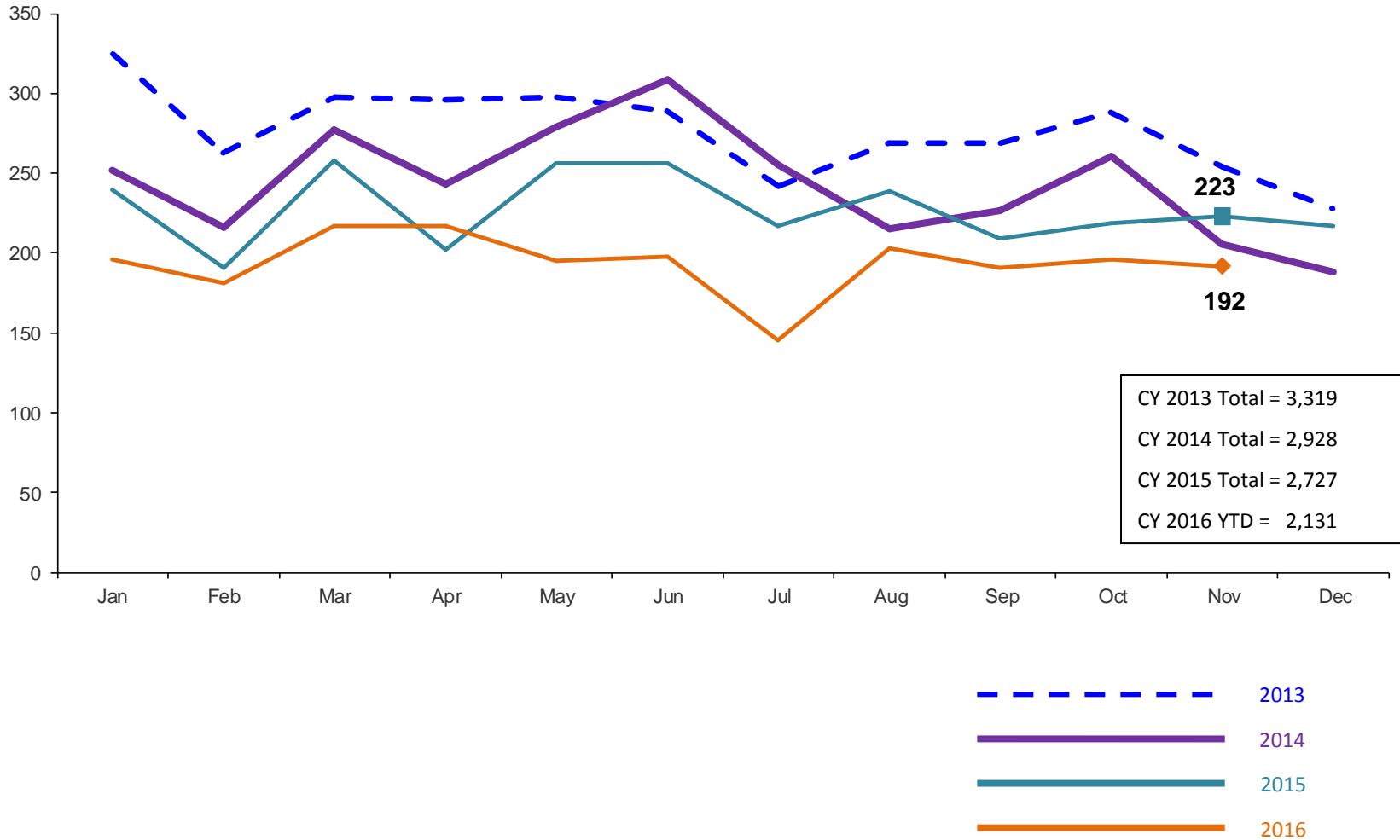
October 2015 – October 2016



	Oct 2015	Nov 2015	Dec 2015	Jan 2016	Feb 2016	Mar20 16	Apr 2016	May 2016	Jun 2016	Jul 2016	Aug 2016	Sep 2016	Oct 2016
Capacity	1,043	1,055	1,061	1,061	1,061	1,055	1,055	1,055	1,055	1,055	1,055	1,055	1,043

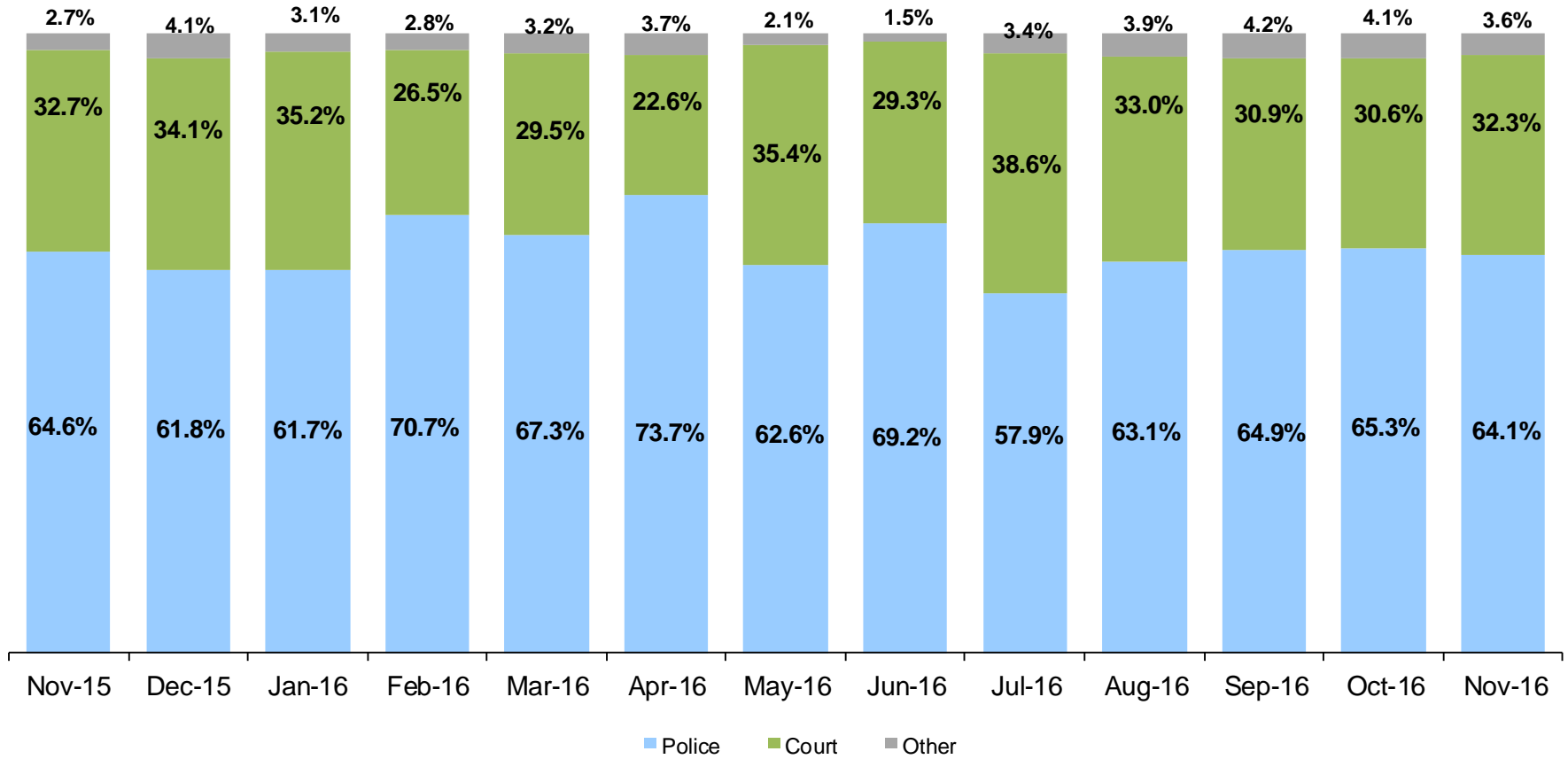
Total Monthly Admissions to Detention

January 2013 – November 2016 (Monthly Total)



Admit Authority on Admissions

November 2015 – November 2016 (Monthly Total)



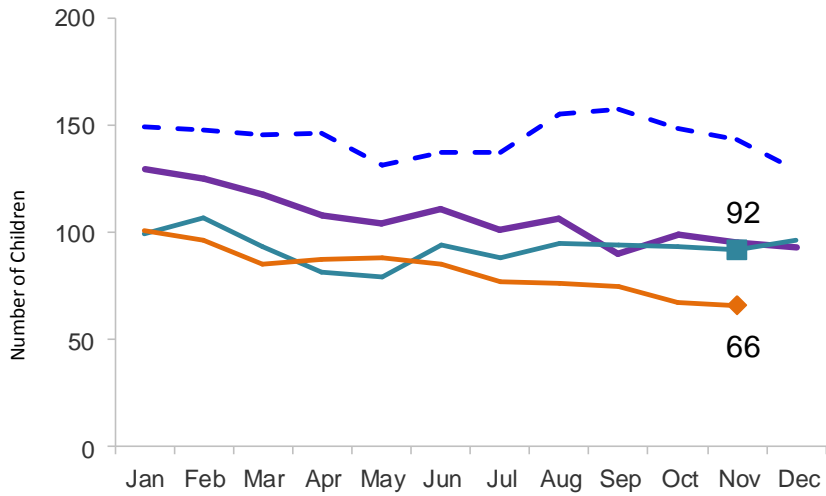
	Nov 2015	Dec 2015	Jan 2016	Feb 2016	Mar 2016	Apr 2016	May 2016	Jun 2016	Jul 2016	Aug 2016	Sep 2016	Oct 2016	Nov 2016
Number of Admissions	223	217	196	181	217	217	195	198	145	203	191	196	192

Note: Other Admit Authority includes the Sheriff Department, Department of Corrections and ACS.

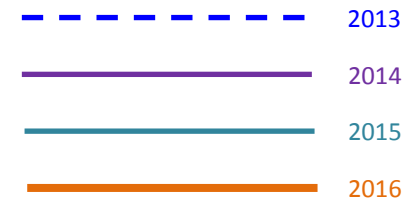
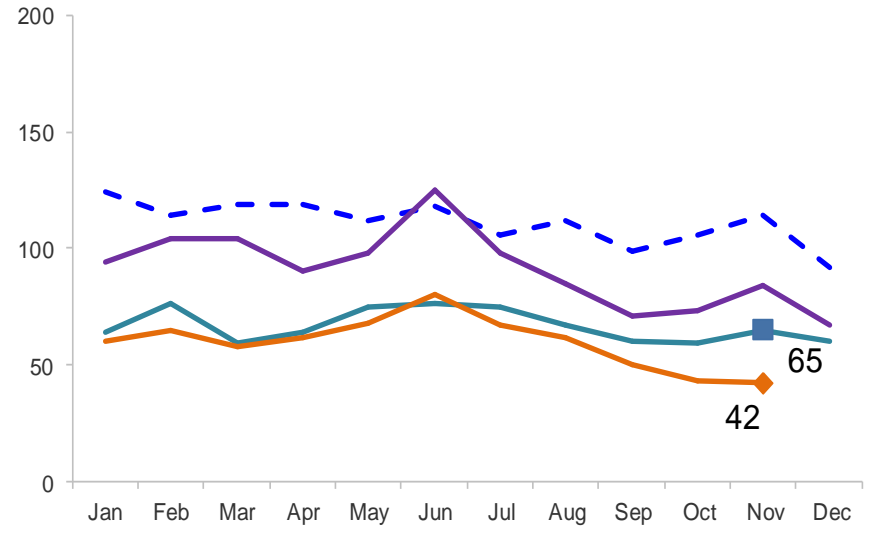
Monthly Average Daily Population

January 2013 – November 2016

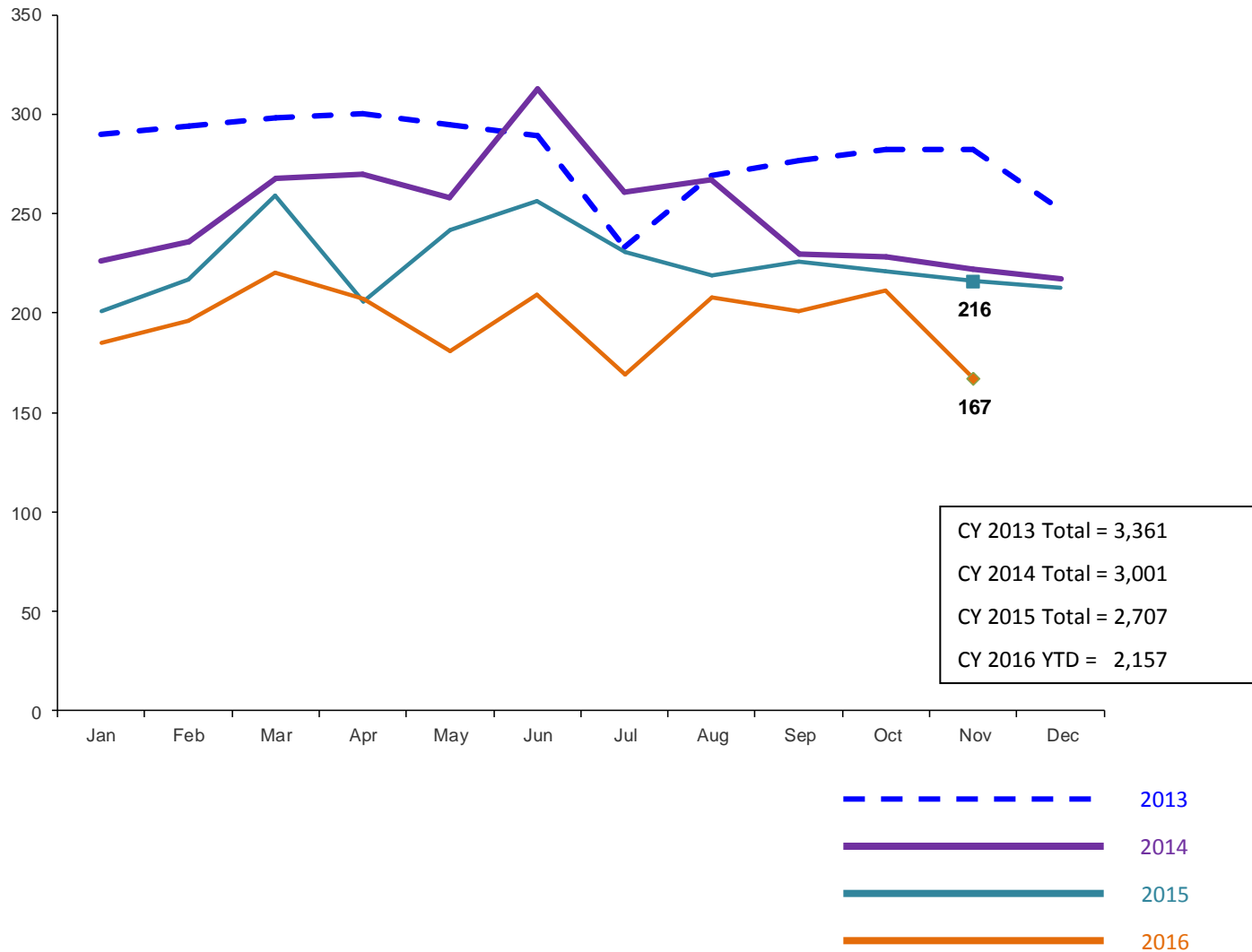
Secure Detention



Non-Secure Detention

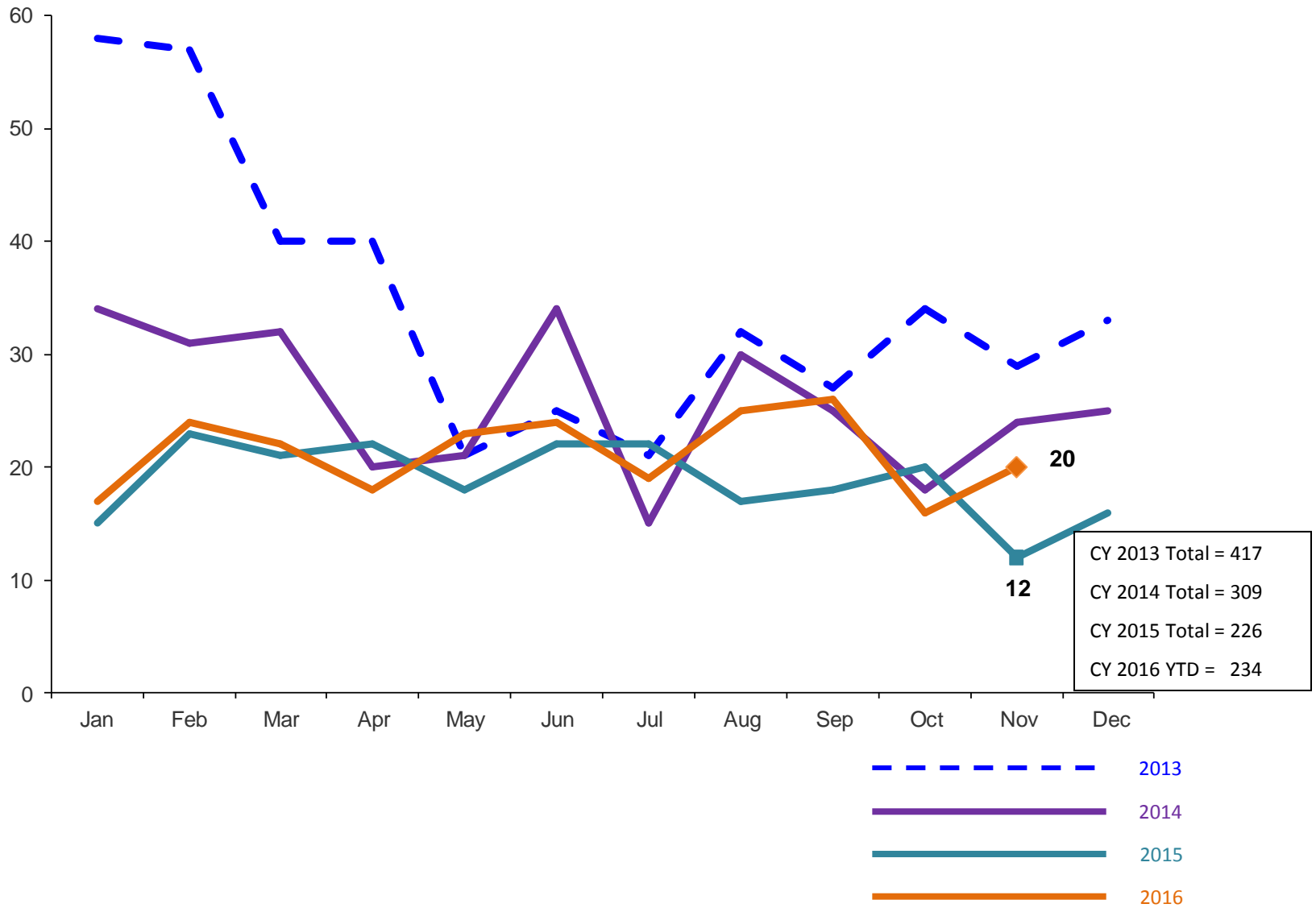


Total Monthly Releases from Detention January 2013 – November 2016 (Monthly Total)



Close to Home Intakes*

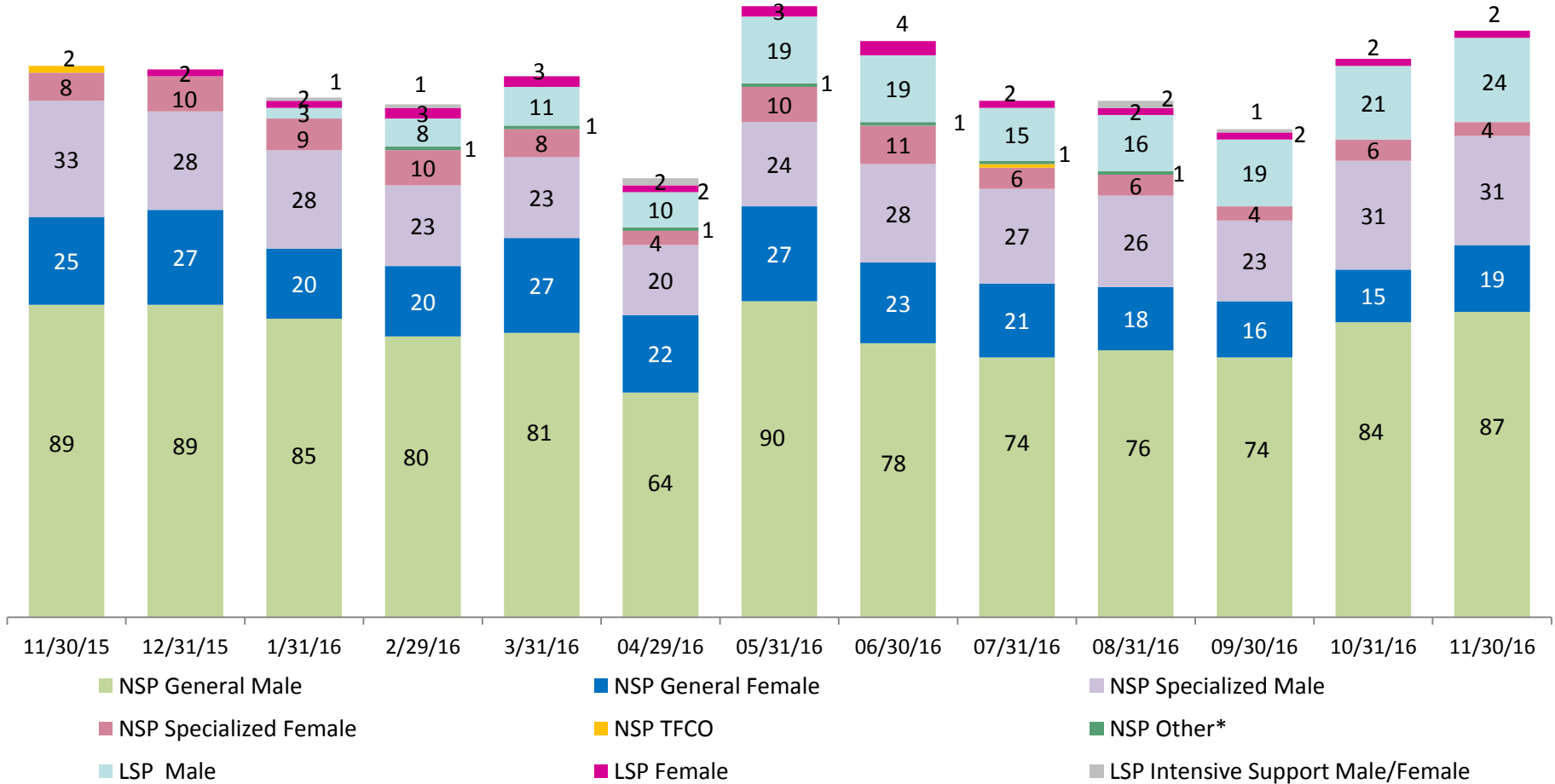
January 2013 – November 2016 (Monthly Total)



*Beginning in December 2015 Close to Home Intakes include LSP as well as NSP.

CTH Placement, in 24-hour Care

November 2015 – November 2016 (end of month)

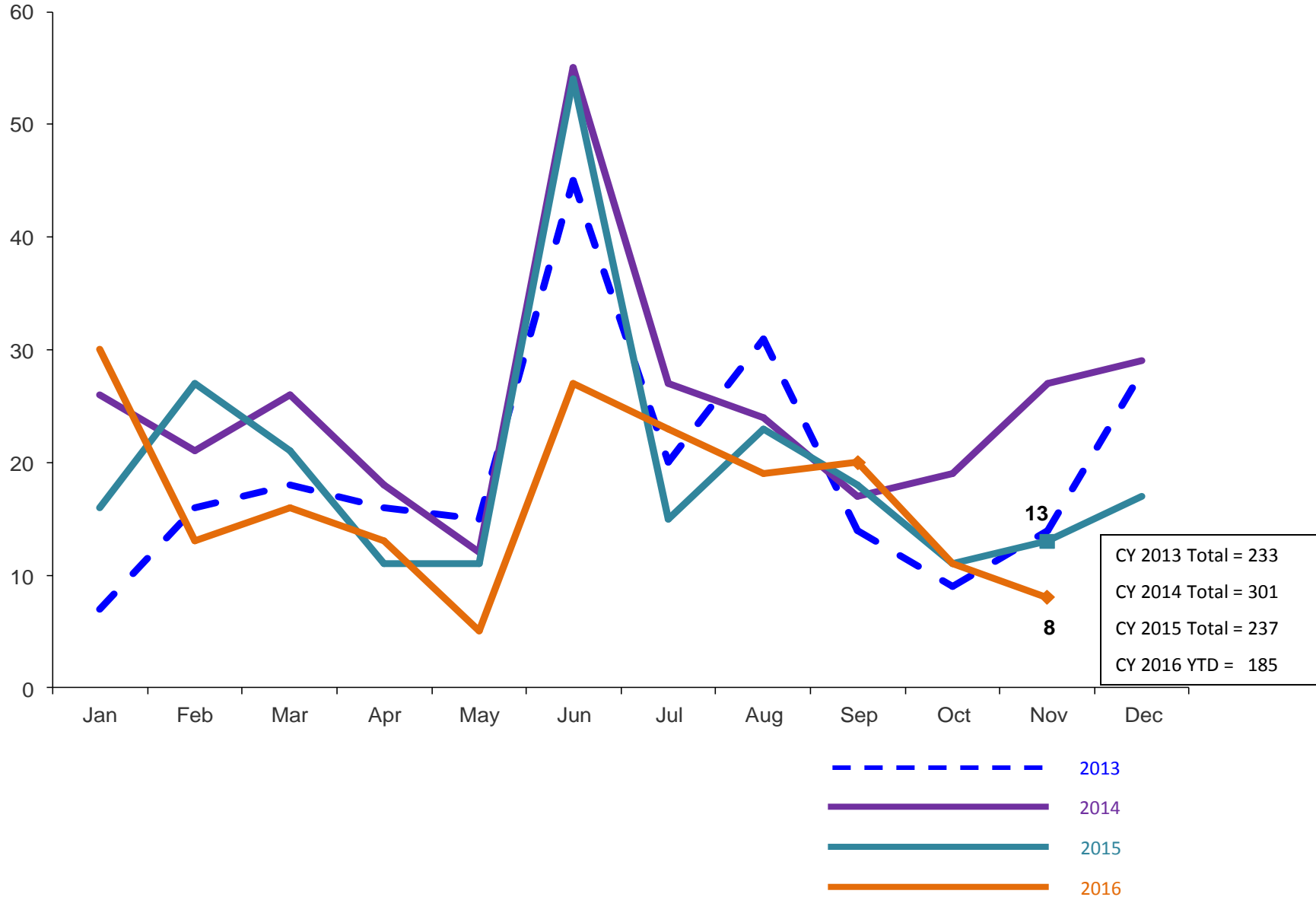


Number in Placement													
	11/30/15	12/31/15	1/31/16	2/29/16	3/31/16	4/29/16	5/31/16	6/30/16	7/31/16	8/31/16	9/30/16	10/31/16	11/30/16
NSP	157	154	142	134	140	111	152	141	130	127	117	136	141
LSP	0	2	6	12	14	14	22	23	17	20	22	23	26

*NSP Other includes youth in child welfare and mother/child placements.

Releases from Close to Home Placement to Aftercare

February 2013 – November 2016 (Monthly Total)



Appendix

Figure 1: SCR Intakes by Borough, SEP 15 - NOV 15 and SEP 16 - NOV 16

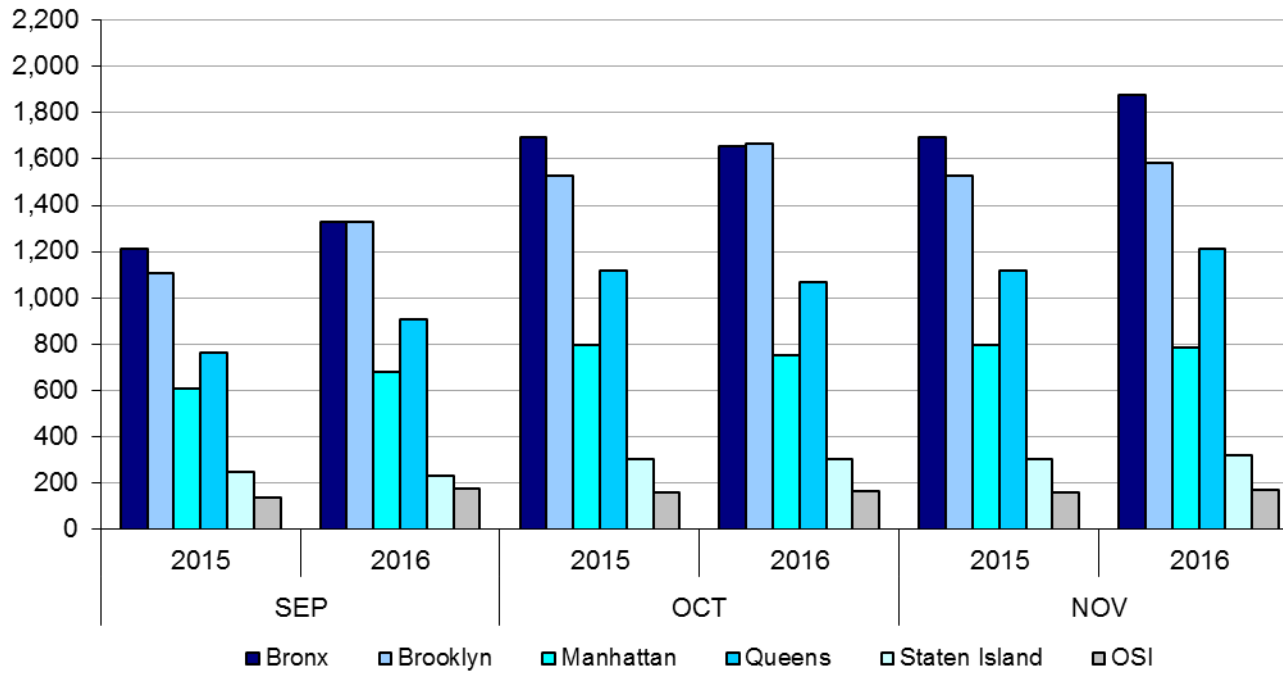


Table 1 - SCR Intake Changes by Borough, SEP 15 - NOV 15 and SEP 16 - NOV 16

Month	Year	Bronx	Brooklyn	Manhattan	Queens	Staten Island	OSI	Other	Total
SEP	2015	1,210	1,107	610	762	245	138	149	4,221
	2016	1,329	1,328	680	908	230	173	168	4,816
	% Change	9.8%	20.0%	11.5%	19.2%	-6.1%	25.4%	12.8%	14.1%
OCT	2015	1,694	1,526	797	1,117	304	158	129	5,725
	2016	1,656	1,666	754	1,066	304	166	169	5,781
	% Change	-2.2%	9.2%	-5.4%	-4.6%	0.0%	5.1%	31.0%	1.0%
NOV	2015	1,596	1,440	756	1,057	297	137	147	5,430
	2016	1,879	1,585	784	1,213	317	167	126	6,071
	% Change	17.7%	10.1%	3.7%	14.8%	6.7%	21.9%	-14.3%	11.8%
Total	2015	4,500	4,073	2,163	2,936	846	433	425	15,376
	2016	4,864	4,579	2,218	3,187	851	506	463	16,668
	% Change	8.1%	12.4%	2.5%	8.5%	0.6%	16.9%	8.9%	8.4%

Figure 2: Citywide SCR Intakes by Reporter Group, SEP 15 - NOV 15 and SEP 16 - NOV 16

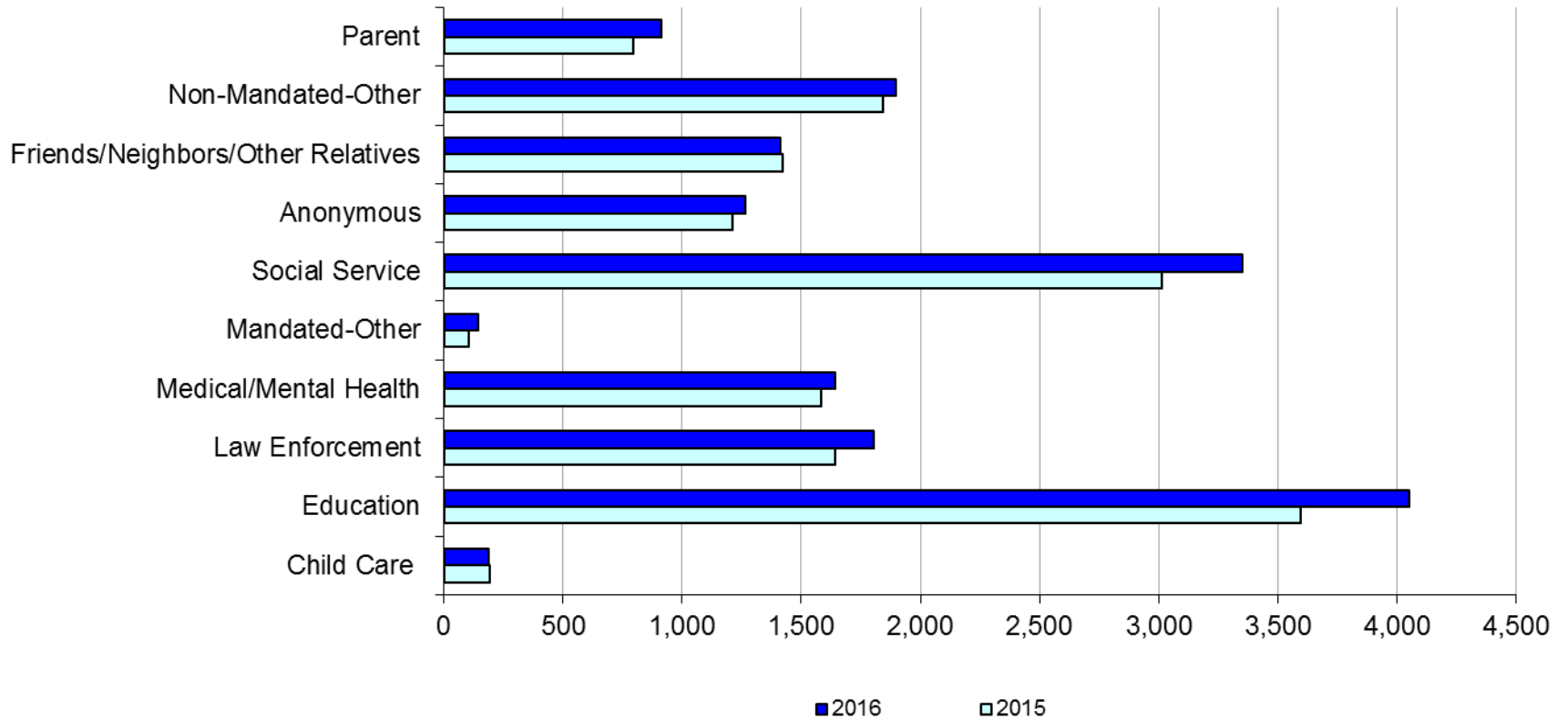
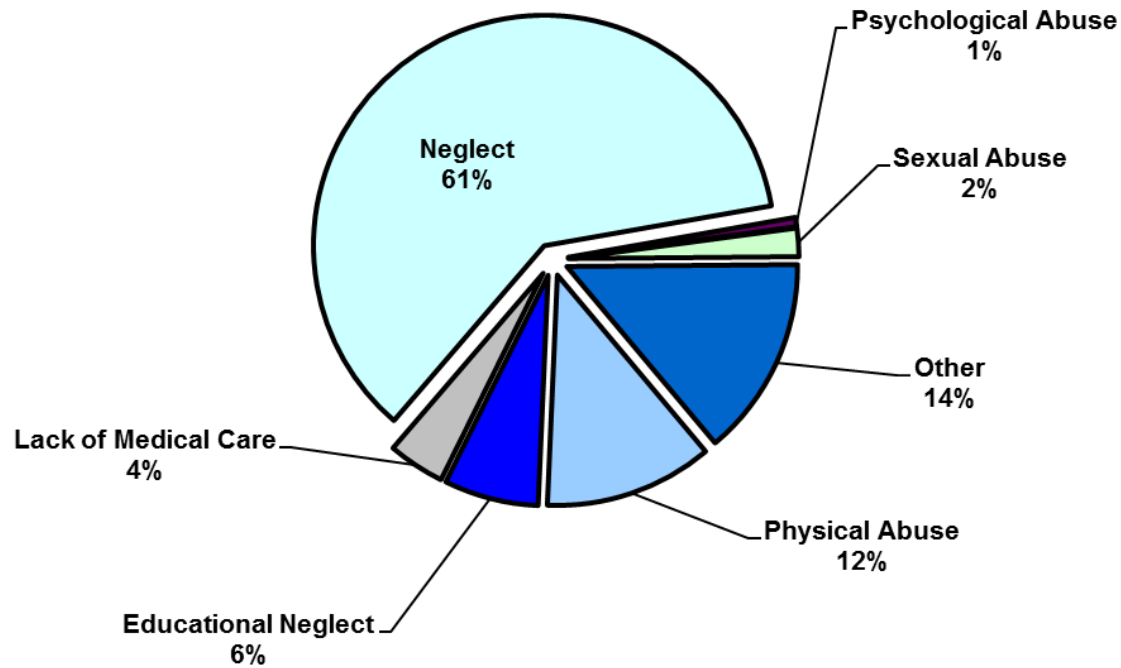


Table 2 - SCR Intakes by Reporter Group, SEP 15 - NOV 15 and SEP 16 - NOV 16

Year	Child Care/ Substitute Care Personnel	Educational Personnel	Law Enforcement	Medical/ Mental Health Personnel	Mandated- Other	Social Service Personnel	Anonymous	Friends/ Neighbors/ Other Relatives	Non- Mandated- Other	Parent	Foster Parent	Total
Bronx												
2015	49	1,040	465	463	35	909	363	412	573	191	0	4,500
2016	66	1,273	475	481	30	1,013	351	381	575	222	0	4,867
% Change	34.7%	22.4%	2.2%	3.9%	-14.3%	11.4%	-3.3%	-7.5%	0.3%	16.2%	--	8.2%
Brooklyn												
2015	47	1,021	476	379	27	707	357	389	451	217	1	4,072
2016	42	1,149	596	404	49	836	362	406	501	237	2	4,584
% Change	-10.6%	12.5%	25.2%	6.6%	81.5%	18.2%	1.4%	4.4%	11.1%	9.2%	100.0%	12.6%
Manhattan												
2015	33	416	278	258	14	447	157	183	269	105	0	2,160
2016	23	446	266	254	20	480	178	178	261	112	0	2,218
% Change	-30.3%	7.2%	-4.3%	-1.6%	42.9%	7.4%	13.4%	-2.7%	-3.0%	6.7%	--	2.7%
Queens												
2015	22	832	242	307	15	625	190	271	302	130	0	2,936
2016	25	884	265	296	28	641	242	285	351	169	1	3,187
% Change	13.6%	6.3%	9.5%	-3.6%	86.7%	2.6%	27.4%	5.2%	16.2%	30.0%	--	8.5%
Staten Island												
2015	11	226	92	88	4	106	85	110	87	37	0	846
2016	5	223	76	87	4	153	81	98	77	47	0	851
% Change	-54.5%	-1.3%	-17.4%	-1.1%	0.0%	44.3%	-4.7%	-10.9%	-11.5%	27.0%	--	0.6%
OSI												
2015	27	28	16	37	5	70	37	27	112	73	1	433
2016	22	43	33	52	7	96	33	30	96	91	3	506
% Change	-18.5%	53.6%	106.3%	40.5%	40.0%	37.1%	-10.8%	11.1%	-14.3%	24.7%	200.0%	16.9%
Other												
2015	4	31	71	52	3	147	22	28	49	40	0	447
2016	6	33	93	70	4	133	19	35	37	34	1	465
% Change	50.0%	6.5%	31.0%	34.6%	33.3%	-9.5%	-13.6%	25.0%	-24.5%	-15.0%	--	4.0%
Citywide												
2015	193	3,594	1,640	1,584	103	3,011	1,211	1,420	1,843	793	2	15,394
2016	189	4,051	1,804	1,644	142	3,352	1,266	1,413	1,898	912	7	16,678
% Change	-2.1%	12.7%	10.0%	3.8%	37.9%	11.3%	4.5%	-0.5%	3.0%	15.0%	250.0%	8.3%

Figure 3: SCR Allegations, SEP 16 – NOV 16



Total Allegations = 42,323

Allegations are grouped as follows: Physical Abuse - burn, fatality, fracture, choking, twisting, shaking, excessive corporal punishment, internal injuries, lacerations, bruises, welts, poisoning, noxious substances; Educational Neglect – educational neglect; Lack of Medical Care – lack of medical care; Neglect - inadequate guardianship, inadequate food, clothing, shelter, lack of supervision, malnutrition, failure to thrive, swelling, dislocations, sprains; Psychological Abuse - isolation, emotional neglect; Sexual Abuse – sexual abuse; and Other -parental drug use, child drug use, abandonment, inappropriate custodial conduct.

Table 3 - SCR Allegations, SEP 15 - NOV 15 and SEP 16 - NOV 16

Year	Physical Abuse	Educational Neglect	Lack of Medical Care	Neglect	Psychological Abuse	Sexual Abuse	Other	Total
Bronx								
2015	1,350	863	460	7,683	55	224	1,680	12,315
2016	1,369	1,066	542	7,799	75	215	1,730	12,796
% Change	1.4%	23.5%	17.8%	1.5%	36.4%	-4.0%	3.0%	3.9%
Brooklyn								
2015	1,335	820	358	6,521	46	256	1,480	10,816
2016	1,372	823	440	6,944	62	244	1,592	11,477
% Change	2.8%	0.4%	22.9%	6.5%	34.8%	-4.7%	7.6%	6.1%
Manhattan								
2015	481	305	221	2930	30	96	644	4,707
2016	546	307	211	2955	42	91	612	4,764
% Change	13.5%	0.7%	-4.5%	0.9%	40.0%	-5.2%	-5.0%	1.2%
Queens								
2015	993	367	242	4,101	52	123	1,031	6,909
2016	987	402	292	4,579	70	146	1,124	7,600
% Change	-0.6%	9.5%	20.7%	11.7%	34.6%	18.7%	9.0%	10.0%
Staten Island								
2015	230	146	93	1,546	10	36	411	2,472
2016	242	116	76	1,546	8	42	477	2,507
% Change	5.2%	-20.5%	-18.3%	0.0%	-20.0%	16.7%	16.1%	1.4%
OSI								
2015	218	48	60	1,063	6	56	161	1,612
2016	362	49	69	1,336	9	74	176	2,075
% Change	66.1%	2.1%	15.0%	25.7%	50.0%	32.1%	9.3%	28.7%
Other								
2015	114	40	41	655	4	32	238	1,124
2016	117	40	54	630	10	30	223	1,104
% Change	2.6%	0.0%	31.7%	-3.8%	150.0%	-6.3%	-6.3%	-1.8%
Citywide								
2015	4,721	2,589	1,475	24,499	203	823	5,645	39,955
2016	4,995	2,803	1,684	25,789	276	842	5,934	42,323
% Change	5.8%	8.3%	14.2%	5.3%	36.0%	2.3%	5.1%	5.9%

**TABLE 4 - Child Welfare Preventive Cases
Opened and Closed
January 2013 to November 2016**

Month	Opened Cases	Closed Cases
2013		
Jan-13	753	884
Feb-13	742	916
Mar-13	801	1,171
Apr-13	785	988
May-13	682	1,337
Jun-13	775	780
Jul-13	802	1,004
Aug-13	777	1,084
Sep-13	727	724
Oct-13	780	765
Nov-13	725	685
Dec-13	946	552
2014		
Jan-14	841	640
Feb-14	885	679
Mar-14	998	874
Apr-14	919	896
May-14	919	888
Jun-14	890	762
Jul-14	973	1,077
Aug-14	826	943
Sep-14	841	705
Oct-14	835	819
Nov-14	677	638
Dec-14	1,062	721
2015		
Jan-15	728	716
Feb-15	902	590
Mar-15	1,122	686
Apr-15	977	743
May-15	914	842
Jun-15	1,068	797
Jul-15	899	1,070
Aug-15	893	891
Sep-15	764	847
Oct-15	749	772
Nov-15	746	652
Dec-15	1,013	707
2016		
Jan-16	792	668
Feb-16	897	667
Mar-16	1,029	869
Apr-16	836	794
May-16	890	709
Jun-16	996	700
Jul-16	842	784
Aug-16	897	755
Sep-16	821	645
Oct-16	776	517
Nov-16	714	386

**Table 5 - Referrals to Child Welfare Preventive Services by Source
January 2013 to November 2016**

Month	Total Referrals	Division of Child Protection	Foster Care Agencies	PPRS Transfer	School	Self	Other Sources*
2013							
Jan-13	1,474	74.1%	1.2%	7.3%	1.2%	3.7%	12.5%
Feb-13	1,308	75.8%	1.1%	8.0%	1.6%	2.9%	10.6%
Mar-13	1,270	73.5%	1.2%	6.7%	2.4%	3.9%	12.3%
Apr-13	1,421	77.9%	0.8%	7.4%	0.9%	3.0%	10.1%
May-13	1,320	68.4%	0.5%	10.2%	1.5%	3.8%	15.5%
Jun-13	953	69.2%	1.2%	9.4%	2.6%	5.0%	12.6%
Jul-13	1,014	66.3%	1.9%	14.4%	1.6%	3.9%	11.9%
Aug-13	1,212	70.5%	0.7%	11.8%	0.7%	4.7%	11.6%
Sep-13	1,262	64.0%	2.1%	11.3%	1.7%	6.7%	14.2%
Oct-13	1,319	61.0%	1.1%	9.0%	2.9%	7.5%	18.5%
Nov-13	1,249	55.9%	1.6%	10.5%	4.6%	9.2%	18.3%
Dec-13	1,464	62.2%	1.2%	8.2%	2.3%	9.2%	17.0%
CY 2013	15,266	68.3%	1.2%	9.4%	2.0%	5.3%	13.8%
2014							
Jan-14	1,537	70.0%	1.2%	6.6%	2.3%	5.8%	14.2%
Feb-14	1,334	69.7%	0.8%	8.4%	1.7%	5.5%	13.9%
Mar-14	1,612	70.0%	1.4%	8.6%	1.6%	5.3%	13.1%
Apr-14	1,525	70.2%	0.9%	7.6%	2.1%	3.7%	15.4%
May-14	1,580	74.4%	0.7%	8.3%	1.4%	5.2%	10.0%
Jun-14	1,550	78.6%	1.2%	6.3%	1.2%	3.2%	9.4%
Jul-14	1,659	79.6%	1.5%	6.7%	0.4%	4.2%	7.6%
Aug-14	1,395	72.2%	1.6%	10.8%	0.3%	4.9%	10.3%
Sep-14	1,597	49.4%	1.5%	7.6%	0.3%	4.5%	36.8%
Oct-14	1,634	68.2%	1.9%	10.0%	1.2%	4.6%	14.1%
Nov-14	1,311	66.4%	0.9%	14.3%	2.4%	3.9%	12.1%
Dec-14	1,785	71.1%	1.4%	8.8%	2.9%	4.8%	11.0%
CY 2014	18,519	70.1%	1.3%	8.6%	1.5%	4.6%	14.0%
2015							
Jan-15	1,430	74.4%	1.6%	8.7%	1.8%	3.8%	9.7%
Feb-15	1,538	76.5%	0.8%	8.1%	1.8%	4.7%	8.2%
Mar-15	1,798	74.6%	0.9%	7.3%	1.6%	4.8%	10.8%
Apr-15	1,719	78.2%	1.3%	7.2%	0.6%	3.5%	9.1%
May-15	1,561	77.2%	1.0%	5.1%	1.5%	4.5%	10.8%
Jun-15	1,716	77.4%	1.1%	7.7%	1.2%	3.5%	9.1%
Jul-15	1,511	79.6%	0.9%	7.2%	0.3%	3.8%	8.2%
Aug-15	1,418	79.3%	2.2%	7.8%	0.2%	3.1%	7.5%
Sep-15	1,209	72.1%	2.8%	10.4%	0.5%	5.5%	8.6%
Oct-15	1,338	70.4%	1.9%	8.3%	2.1%	5.8%	11.6%
Nov-15	1,220	68.2%	1.8%	9.6%	1.4%	6.2%	12.8%
Dec-15	1,526	73.5%	1.6%	8.0%	2.0%	5.0%	9.9%
2016							
Jan-16	1,370	73.6%	1.6%	8.2%	0.7%	5.4%	10.6%
Feb-16	1,436	75.8%	2.2%	7.8%	1.0%	3.8%	9.3%
Mar-16	1,557	72.0%	2.1%	8.8%	1.0%	4.6%	11.4%
Apr-16	1,378	76.1%	1.5%	7.4%	1.5%	3.5%	10.0%
May-16	1,386	73.4%	1.4%	8.7%	1.0%	4.7%	10.8%
Jun-16	1,564	77.2%	2.4%	6.2%	1.5%	4.1%	8.6%
Jul-16	1,338	80.3%	1.7%	6.4%	1.0%	4.2%	6.4%
Aug-16	1,385	79.1%	1.8%	7.1%	0.4%	4.0%	7.6%
Sep-16	1,297	77.8%	2.1%	7.5%	0.8%	4.5%	7.4%
Oct-16	1,248	70.0%	2.1%	7.6%	1.5%	5.8%	12.9%
Nov-16	1,215	68.9%	1.7%	8.1%	1.0%	5.1%	15.1%

*Other Community Sources includes the Department of Homeless Services, Family Court, FAP, Hospitals and Medical facilities, the NYC Housing Authority, Probation, and Sponsor Agencies.