

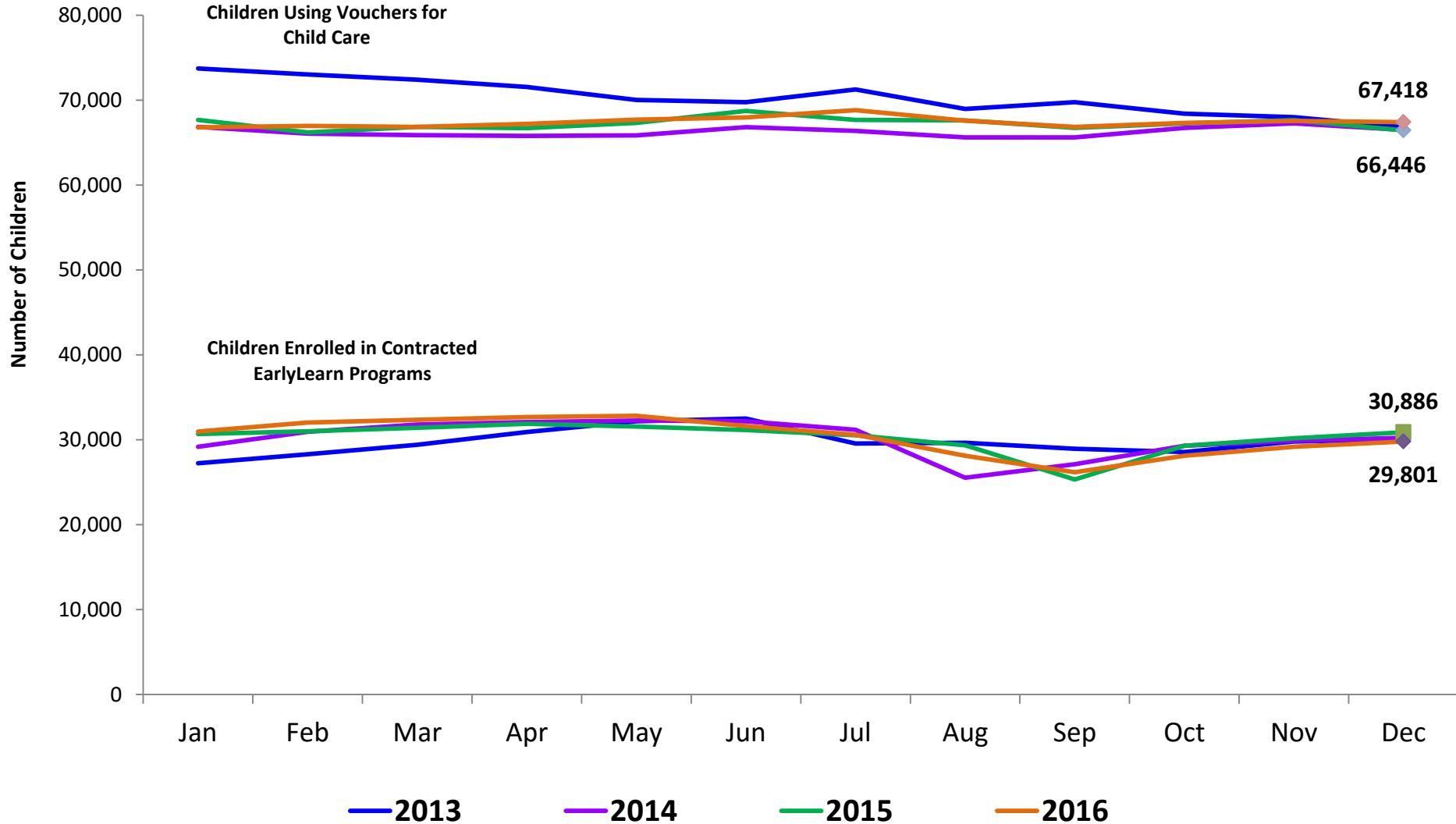


Flash

January 2017

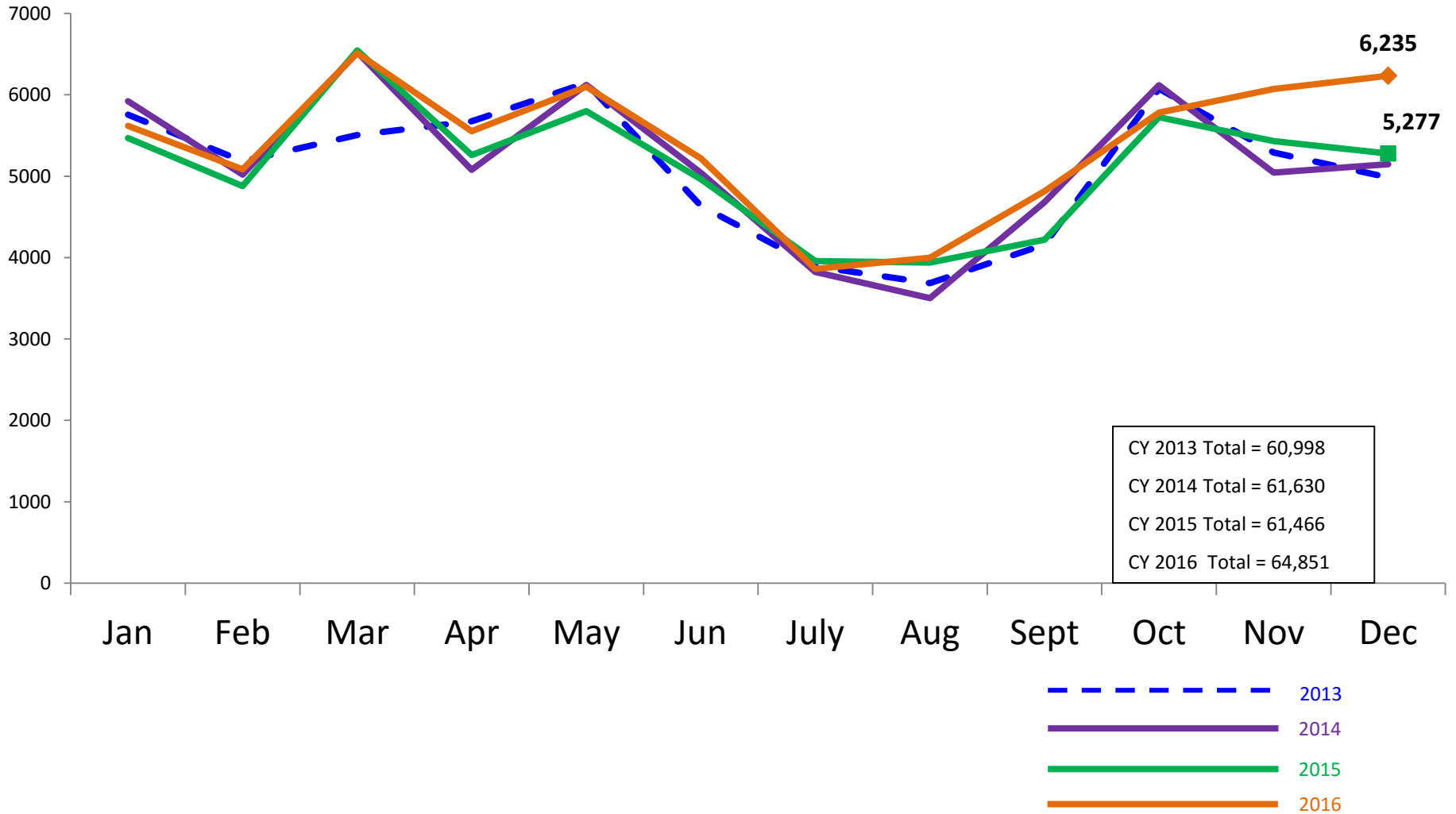
Children Enrolled in Contracted EarlyLearn Programs and Children Using Vouchers for Child Care

January 2013 – December 2016 (End of Month)



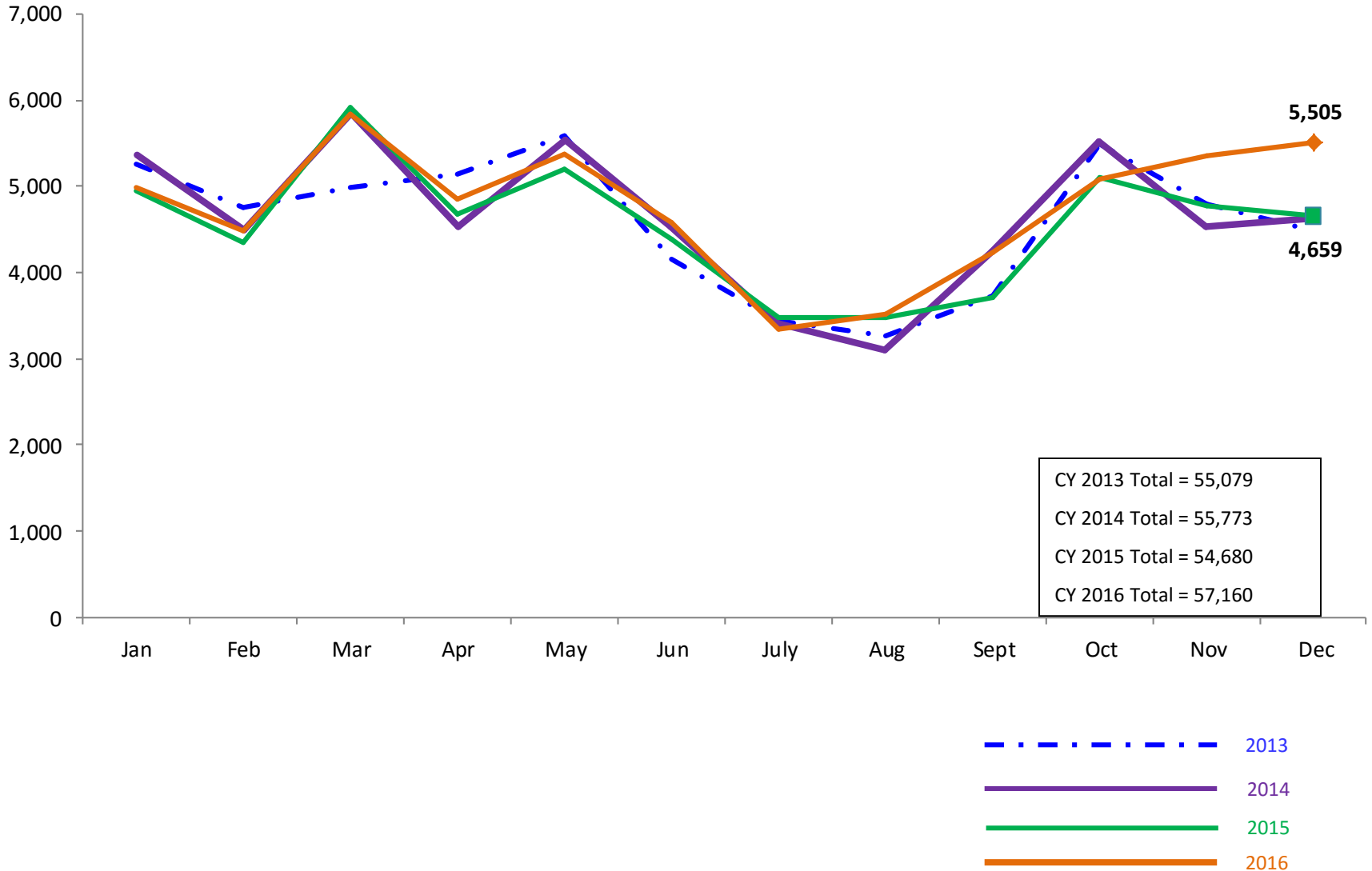
SCR Intakes

January 2013 – December 2016 (Monthly Total)



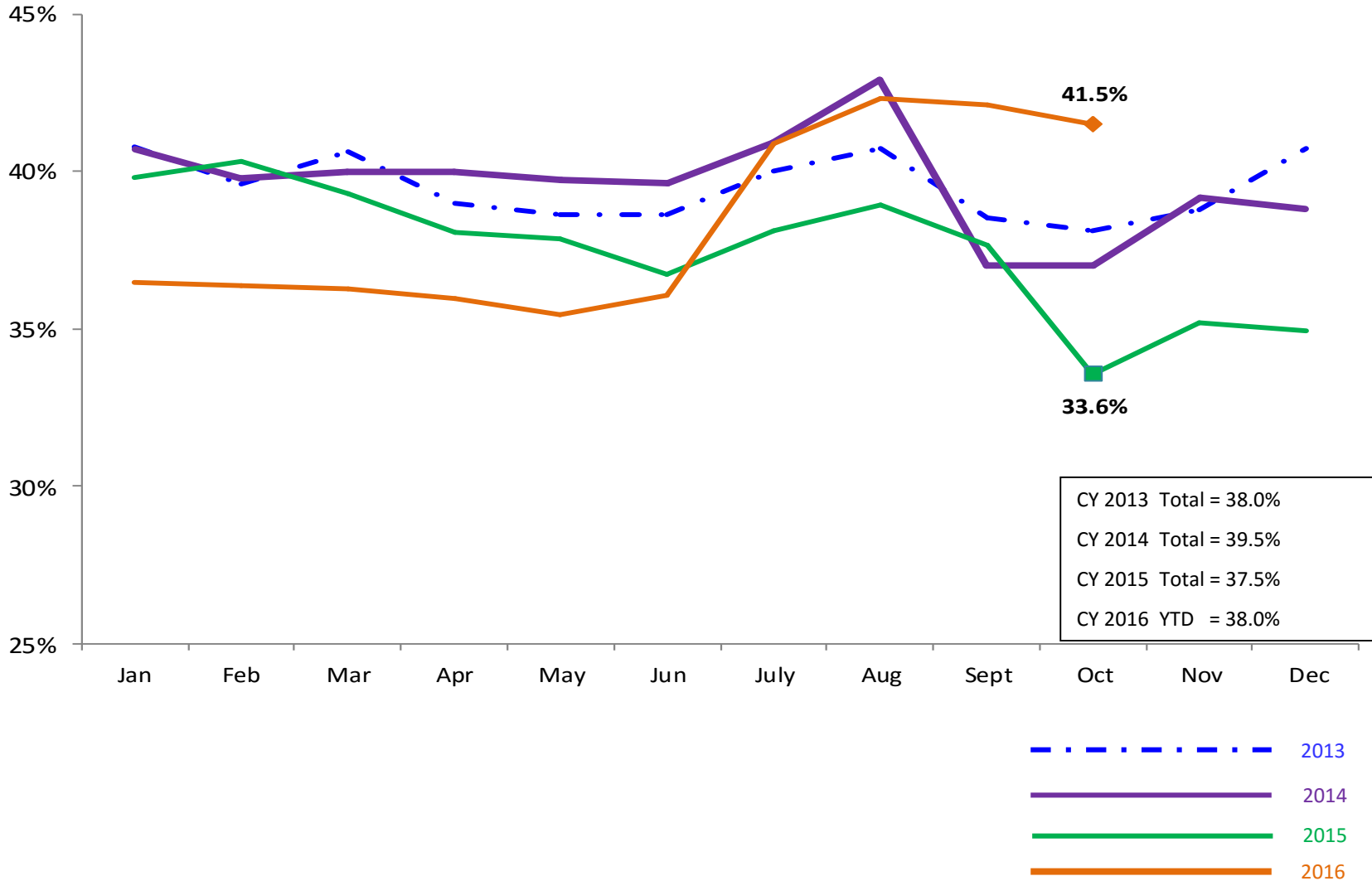
SCR Consolidated Investigations

January 2013 – December 2016 (Monthly Total)



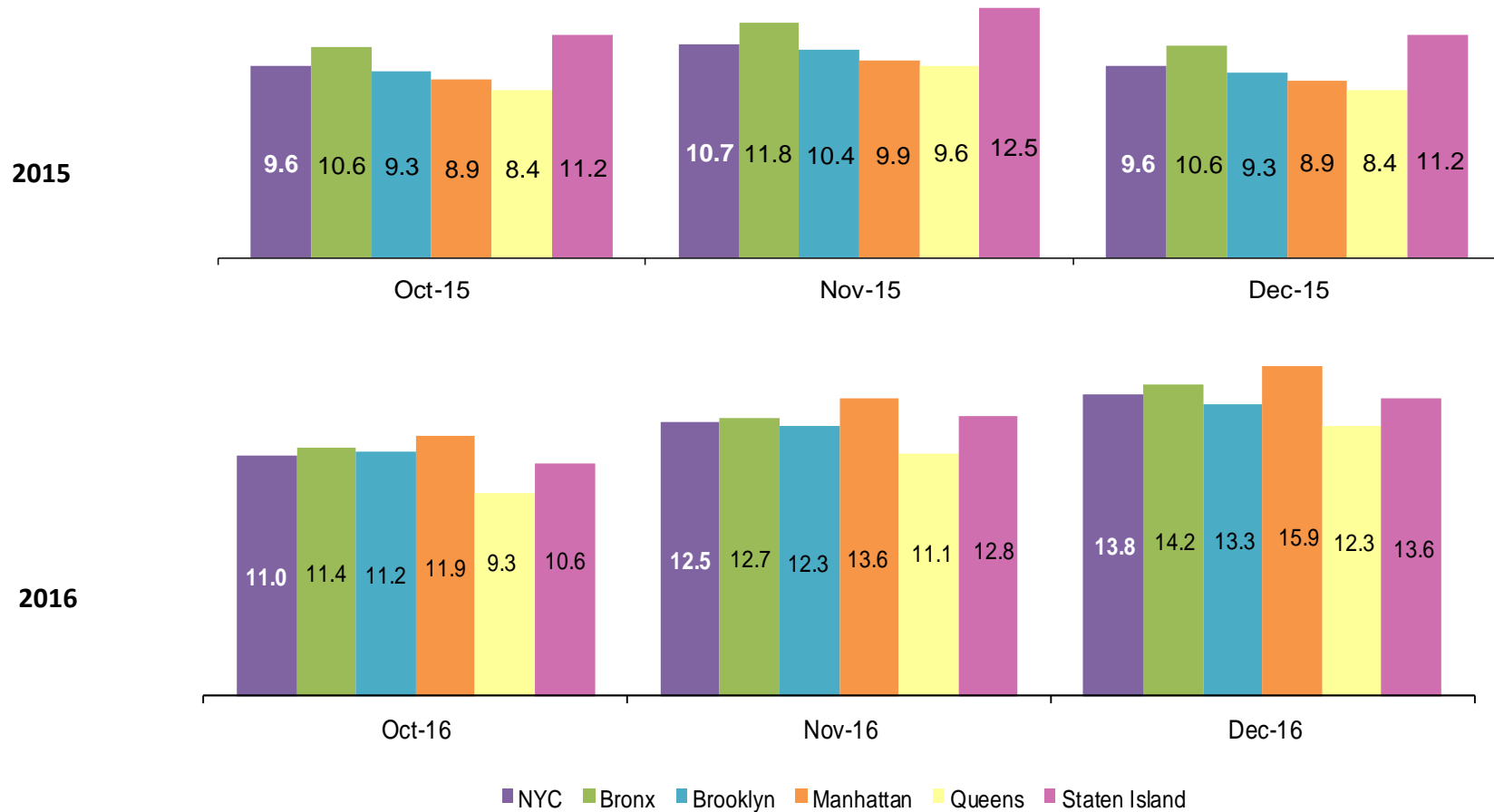
SCR Investigation Indication Rate

January 2013 – October 2016



Average P/D Combined Caseload*

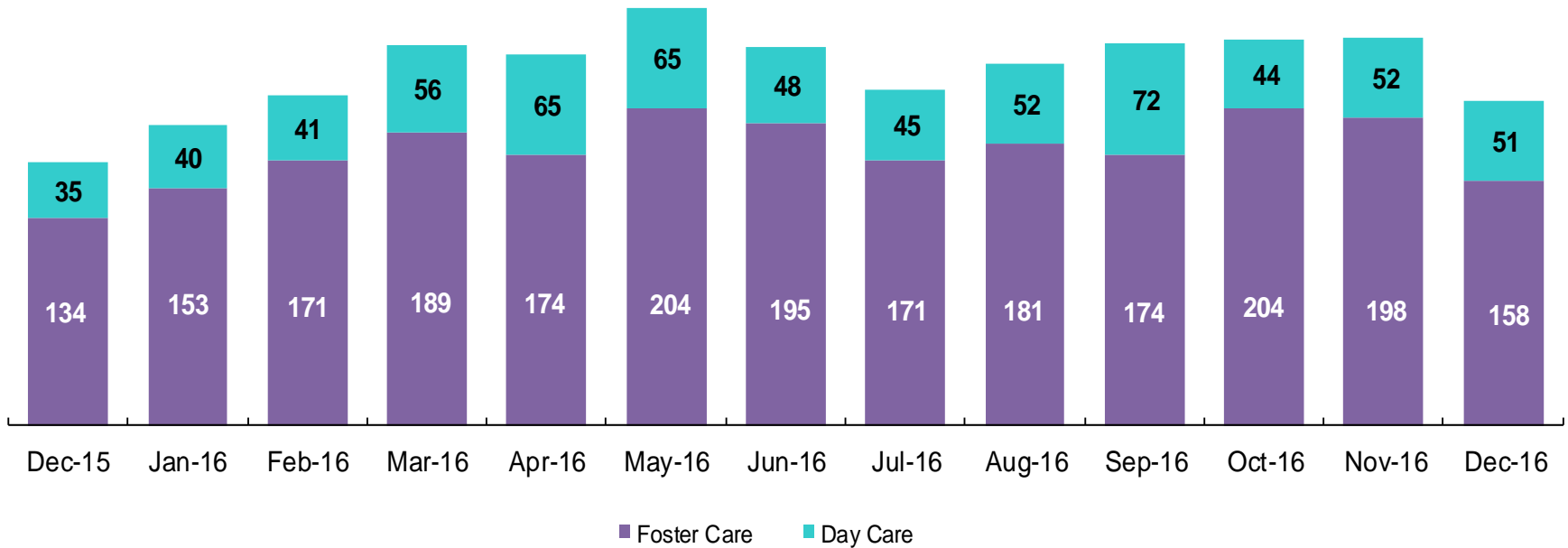
October 2015 – December 2015 & October 2016 – December 2016



* Caseloads are of protective/diagnostic caseworkers only and exclude the caseloads carried by Level I and Level II Supervisors.

OSI Investigations by Program

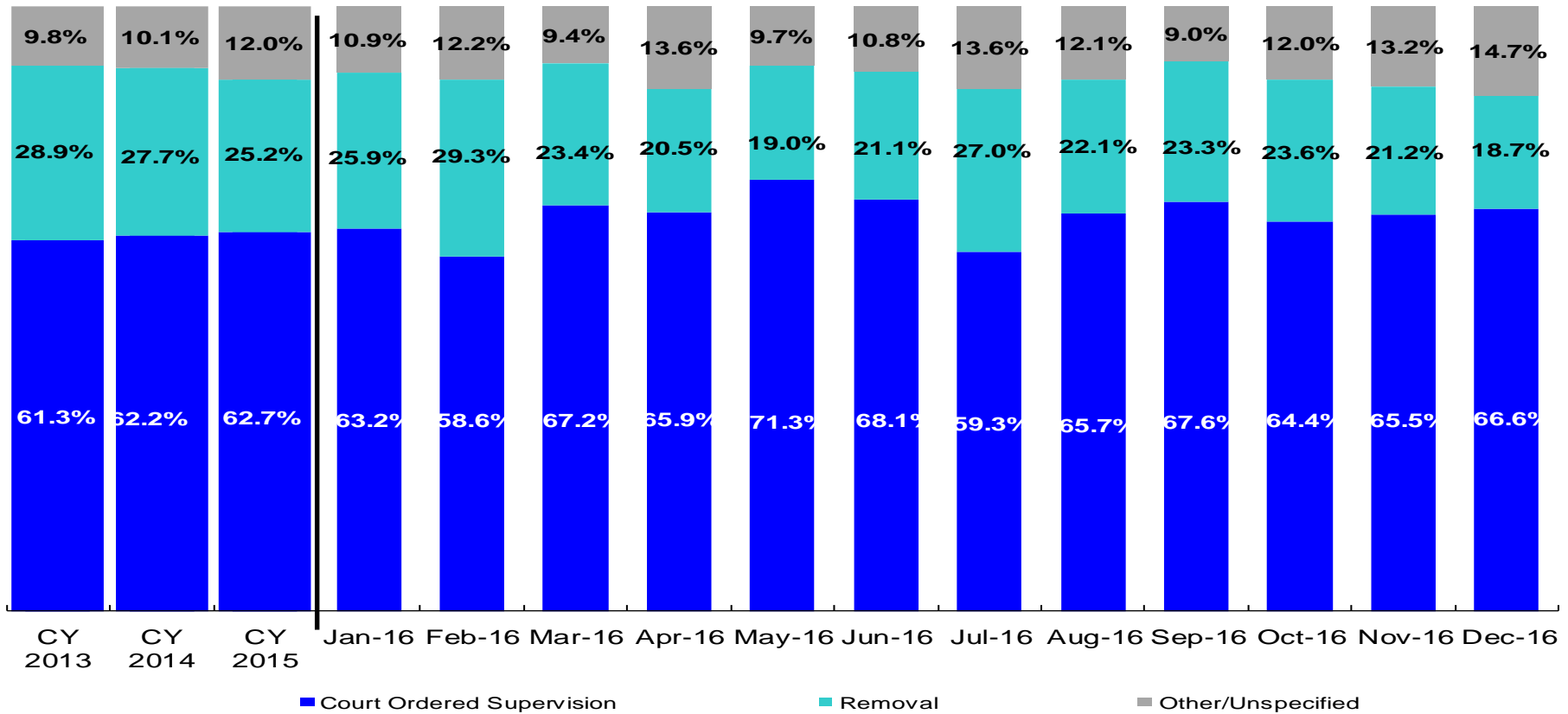
December 2015 – December 2016



	Dec 2015	Jan 2016	Feb 2016	Mar 2016	Apr 2016	May 2016	Jun 2016	Jul 2016	Aug 2016	Sep 2016	Oct 2016	Nov 2016	Dec 2016
Number of Investigations	169	193	212	245	239	269	243	216	233	246	248	250	209

Article 10 Filings and Initial Hearing Outcomes, Children

CY 2013 – December 2016

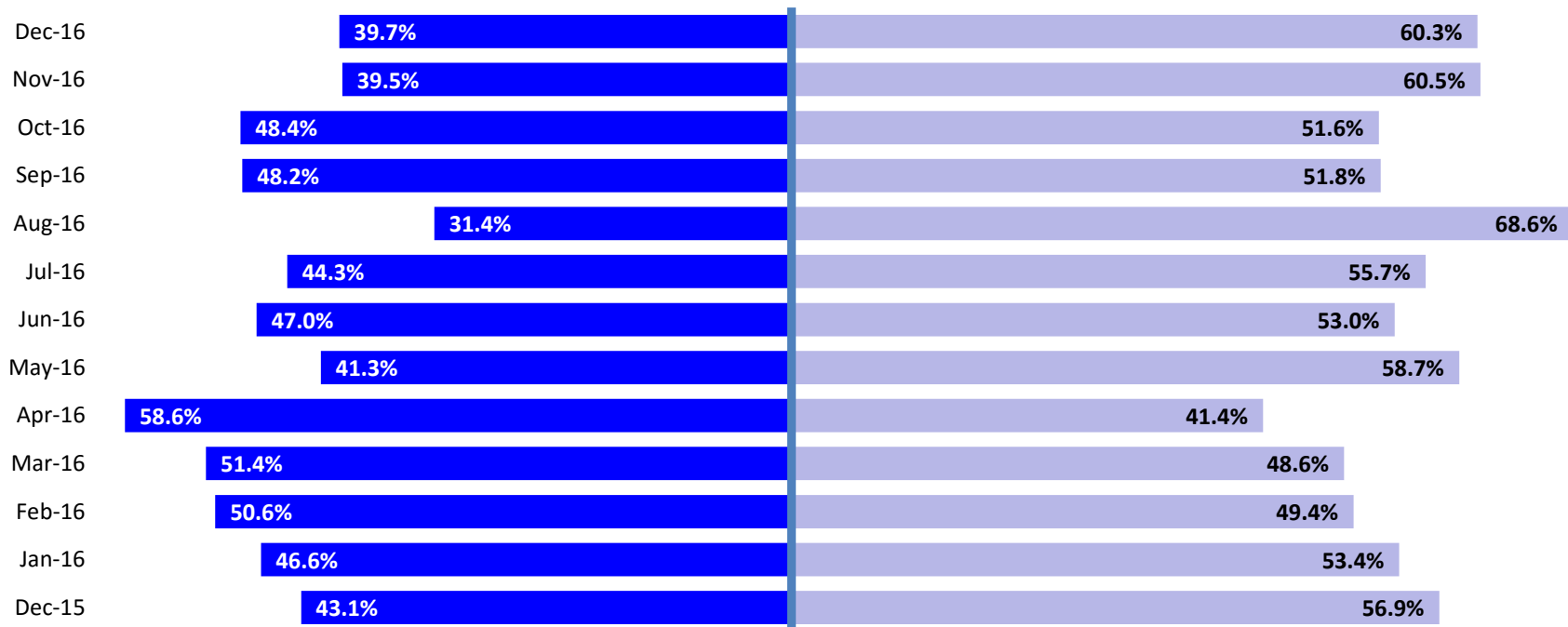


	CY 2013	CY 2014	CY 2015	Jan 2016	Feb 2016	Mar 2016	Apr 2016	May 2016	Jun 2016	Jul 2016	Aug 2016	Sep 2016	Oct 2016	Nov 2016	Dec 2016
Children w/Article 10 Filings	9,318	9,900	10,257	737	830	890	883	790	868	777	922	853	1,322	1,050	1,531

Note: The category "Other/Unspecified" includes released with no supervision, no order issued and no outcome specified.

Article 10 Filing Removals, Court Approved at Initial Hearing, Children

December 2015 – December 2016

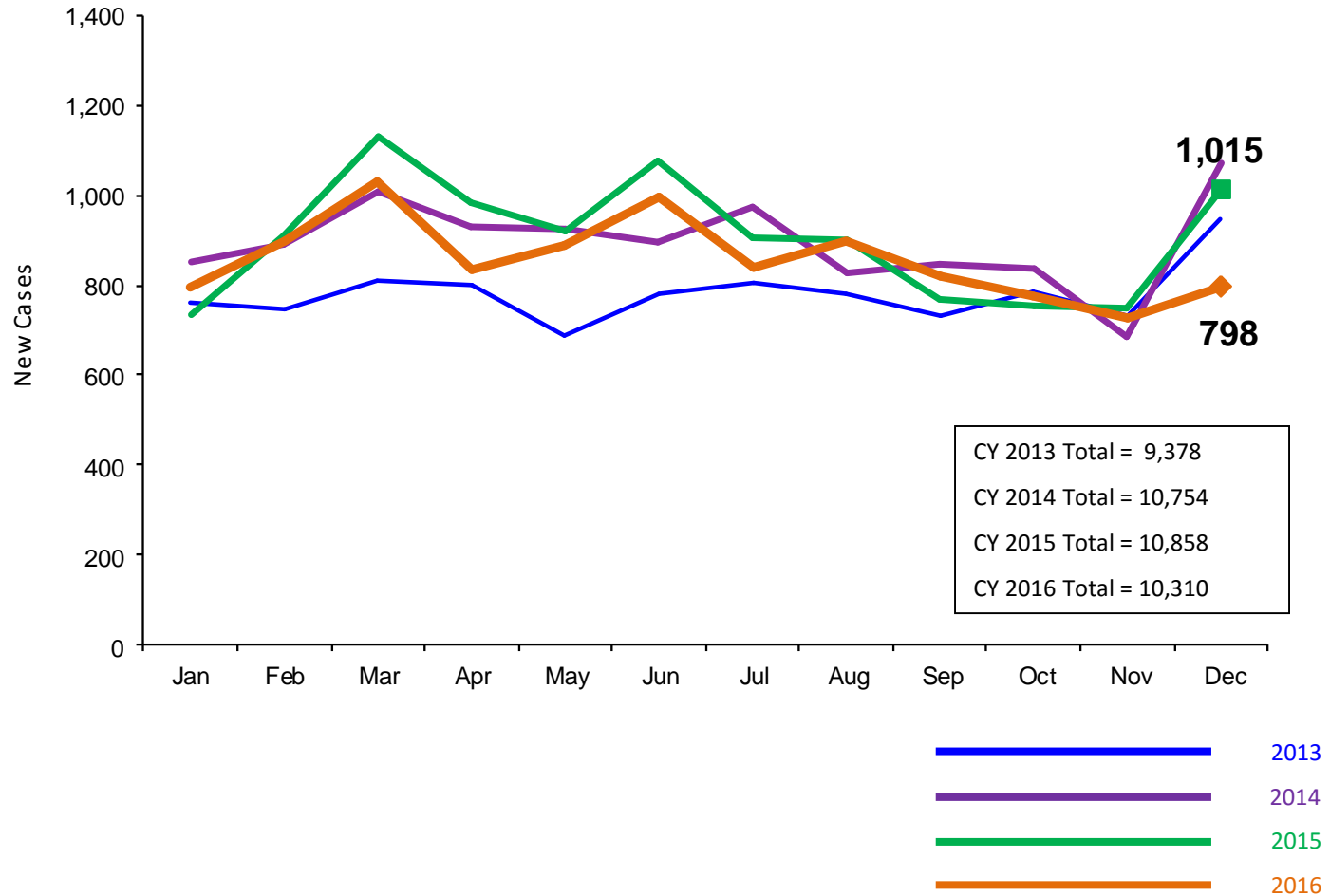


■ Pre-Filing Emergency Removals (court approved at initial hearing) ■ Post-Filing Removals (court ordered at initial hearing)

	Dec 2015	Jan 2016	Feb 2016	Mar 2016	Apr 2016	May 2016	June 2016	July 2016	Aug 2016	Sep 2016	Oct 2016	Nov 2016	Dec 2016
Children Removed	195	191	243	208	181	150	183	210	204	199	312	223	287

New Child Welfare Preventive Cases*

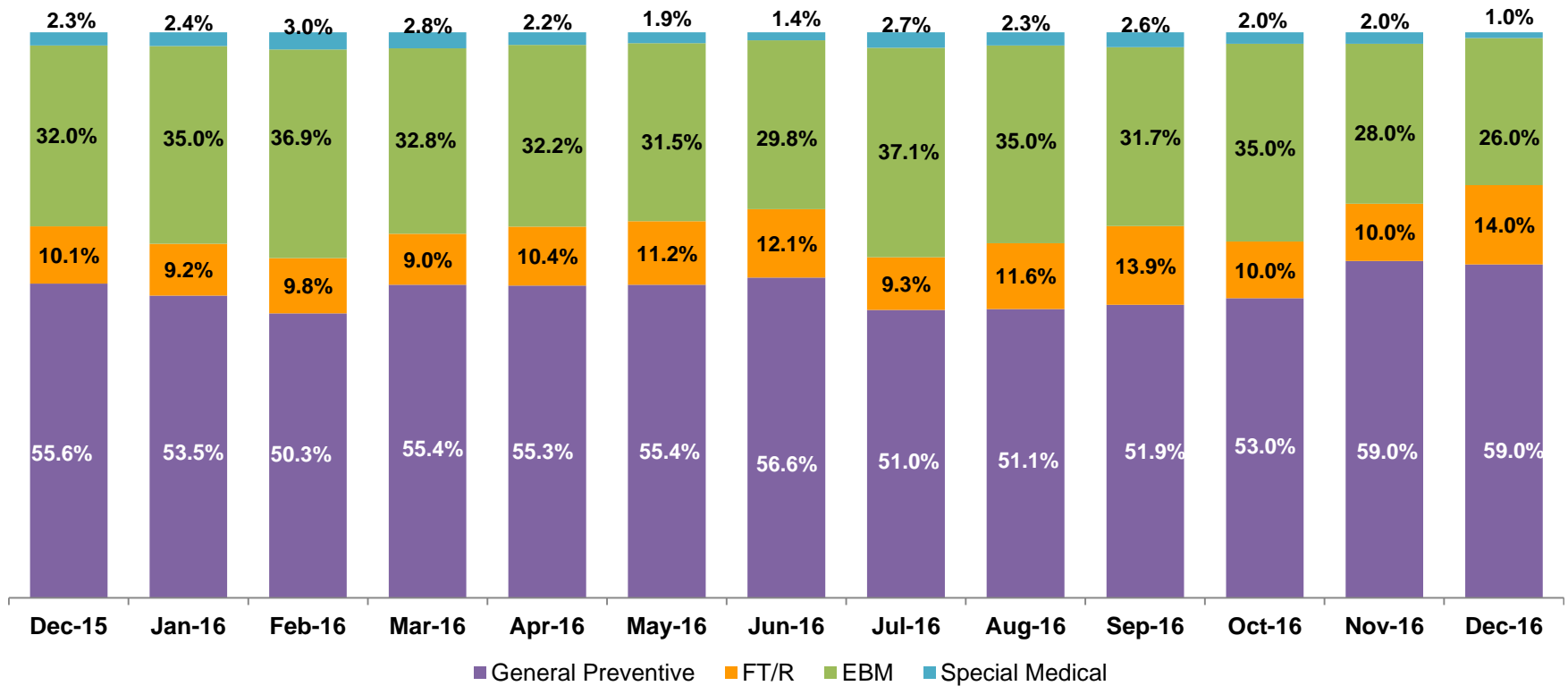
January 2013 – December 2016



*Notes: 1) New preventive cases do not include cases transferred from one preventive program to another. 2) See Pages 33 and 34 of the Appendix for supporting data.

New Child Welfare Preventive Cases by Program Type *

December 2015 – December 2016

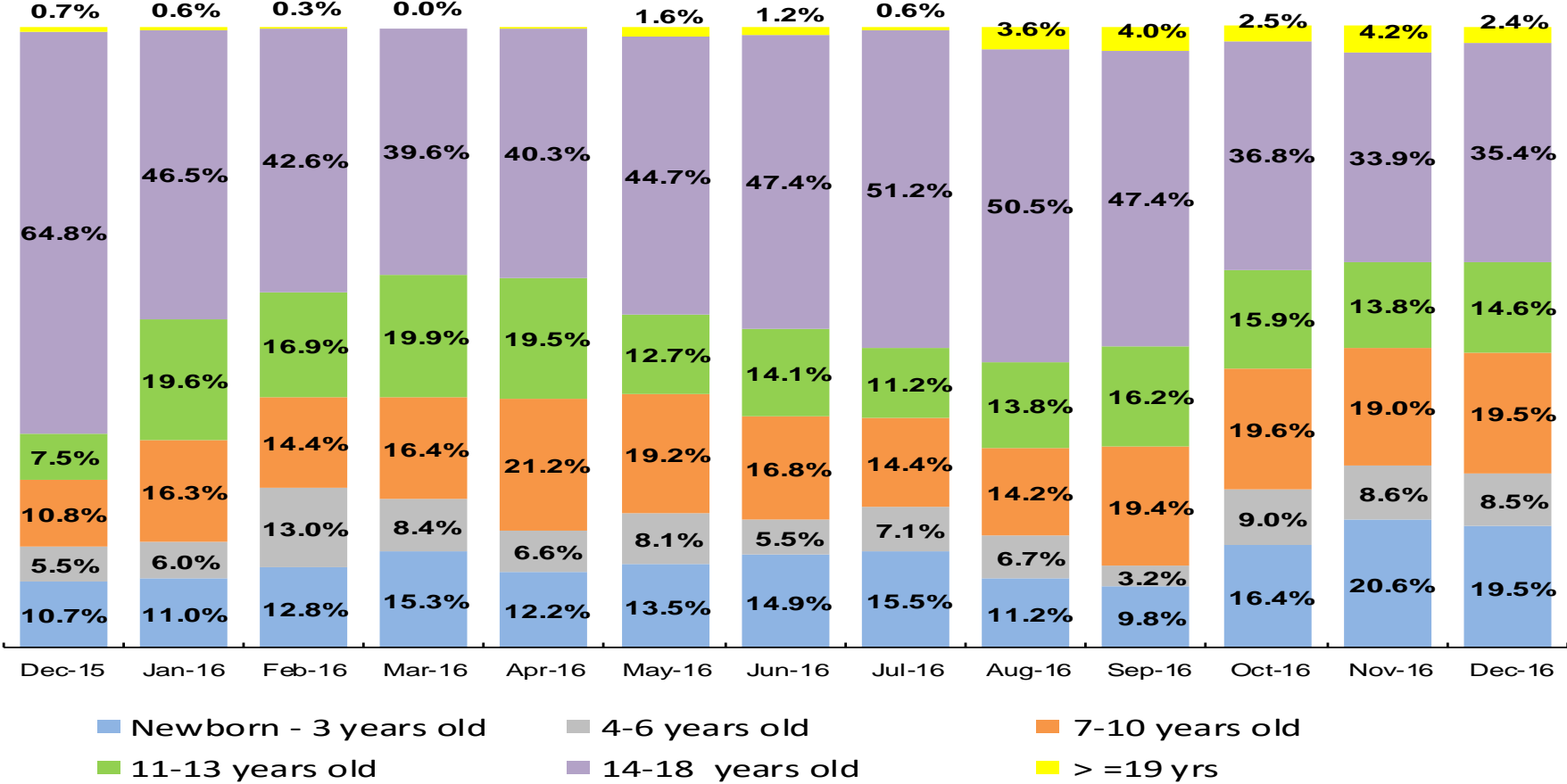


	Dec 2015	Jan 2016	Feb 2016	Mar 2016	Apr 2016	May 2016	June 2016	July 2016	Aug 2016	Sep 2016	Oct 2016	Nov 2016	Dec 2016
Number of New Preventive Cases	1015	797	900	1029	836	890	996	842	897	821	776	728	798

* New preventive cases exclude cases transferred from one preventive program to another.

Average Pre-Placement Residential Monthly Population

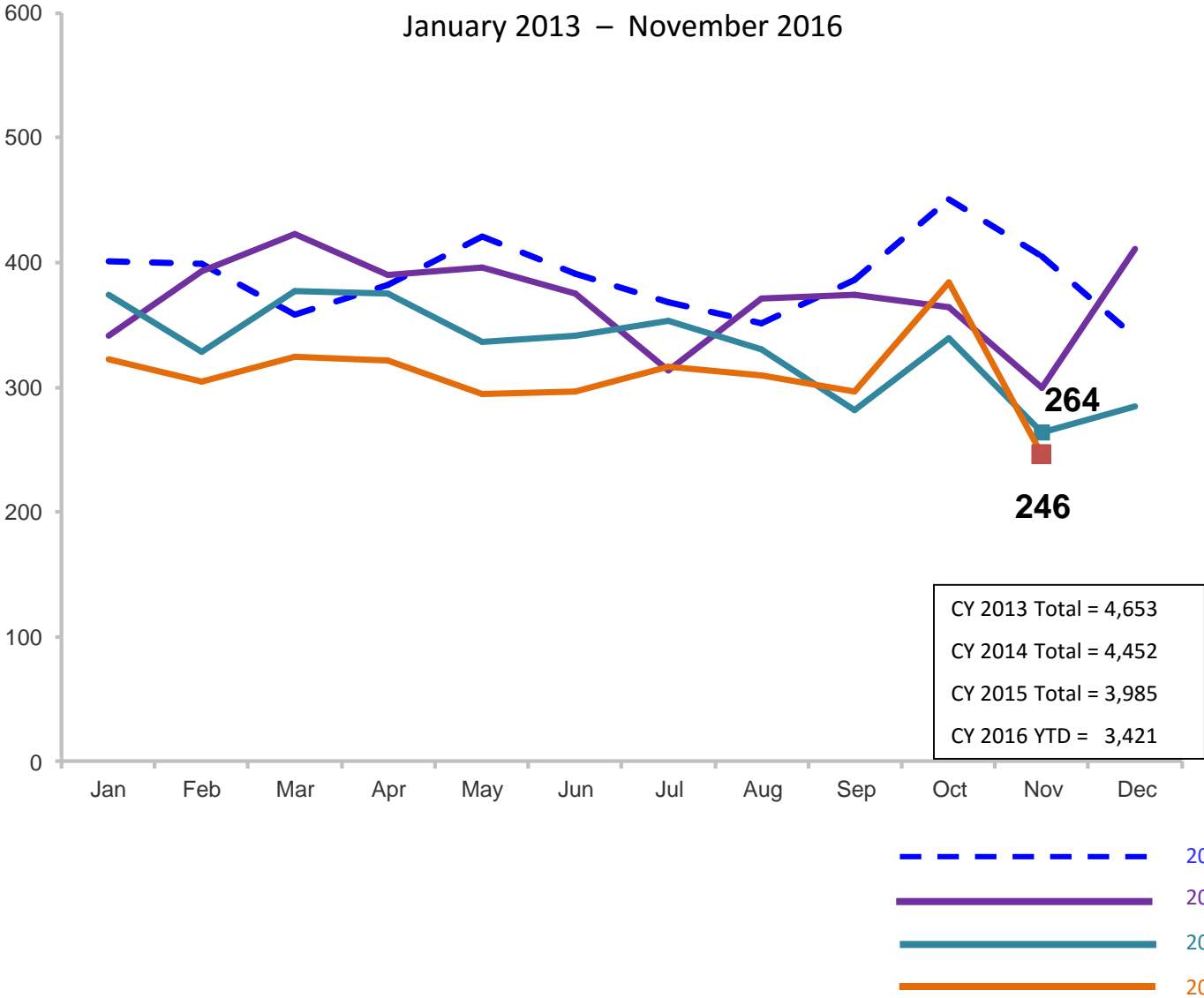
December 2015 – December 2016



	Dec 2015	Jan 2016	Feb 2016	Mar 2016	Apr 2016	May 2016	Jun 2016	Jul 2016	Aug 2016	Sep 2016	Oct 2016	Nov 2016	Dec 2016
Average Number of Children	40	46	45	49	53	34	40	50	56	54	71	62	82

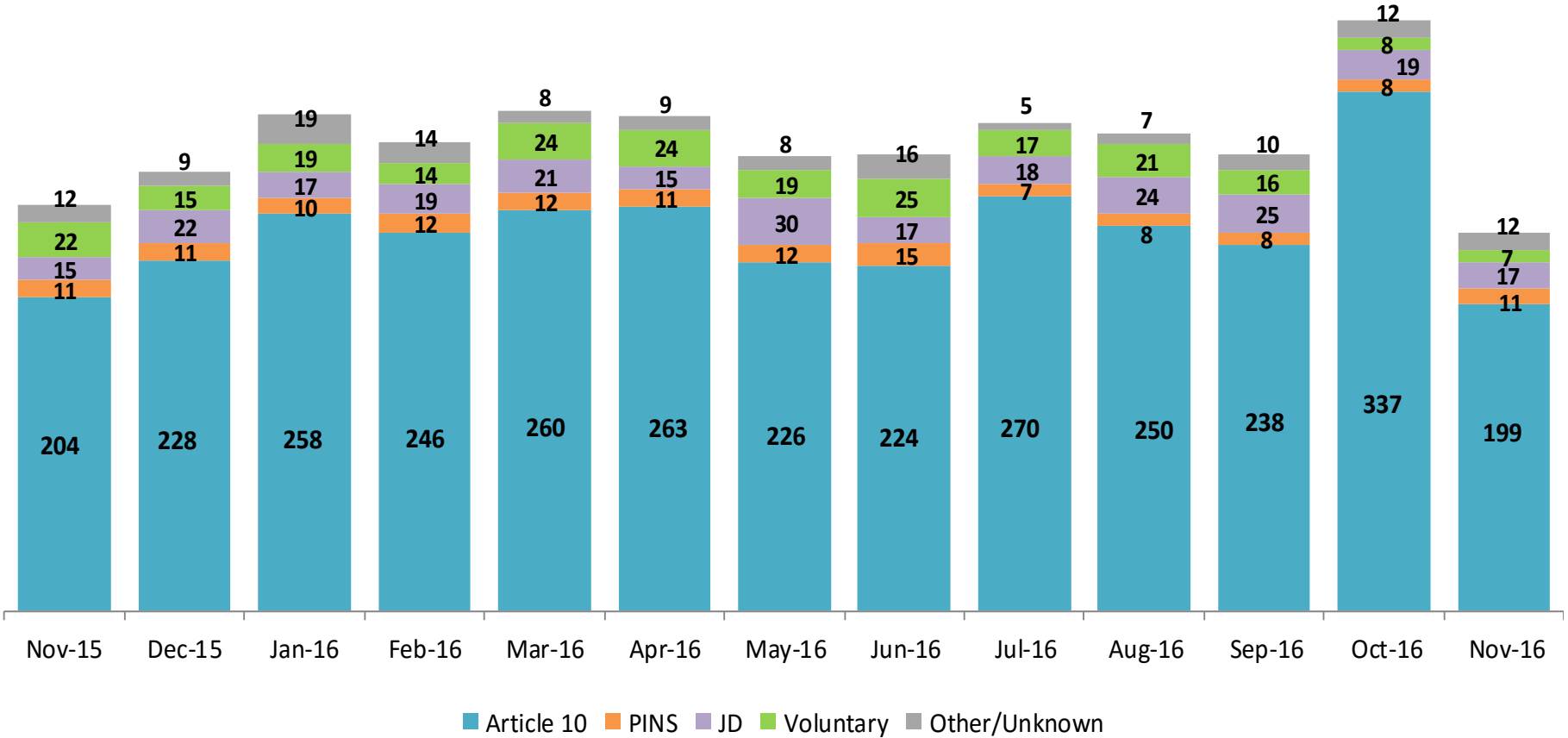
Total Monthly Placements of Children in Foster Care

January 2013 – November 2016



Reason for Initial Placement of Children into Foster Care

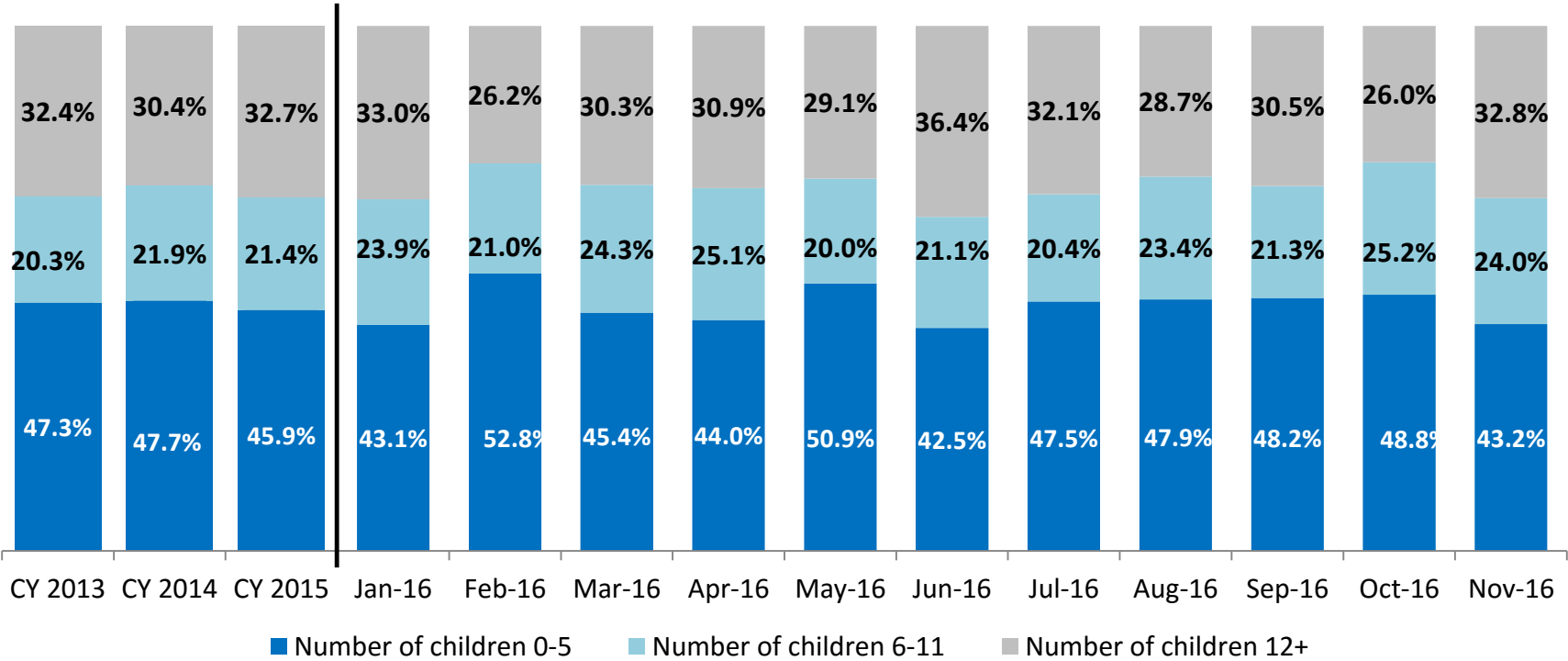
November 2015 – November 2016



	Nov 2015	Dec 2015	Jan 2016	Feb 2016	Mar 2016	Apr 2016	May 2016	Jun 2016	Jul 2016	Aug 2016	Sep 2016	Oct 2016	Nov 2016
Number of Placements of Children	264	285	323	305	325	322	295	297	317	310	297	384	246

Placements of Children* by Age

CY 2013 - November 2016

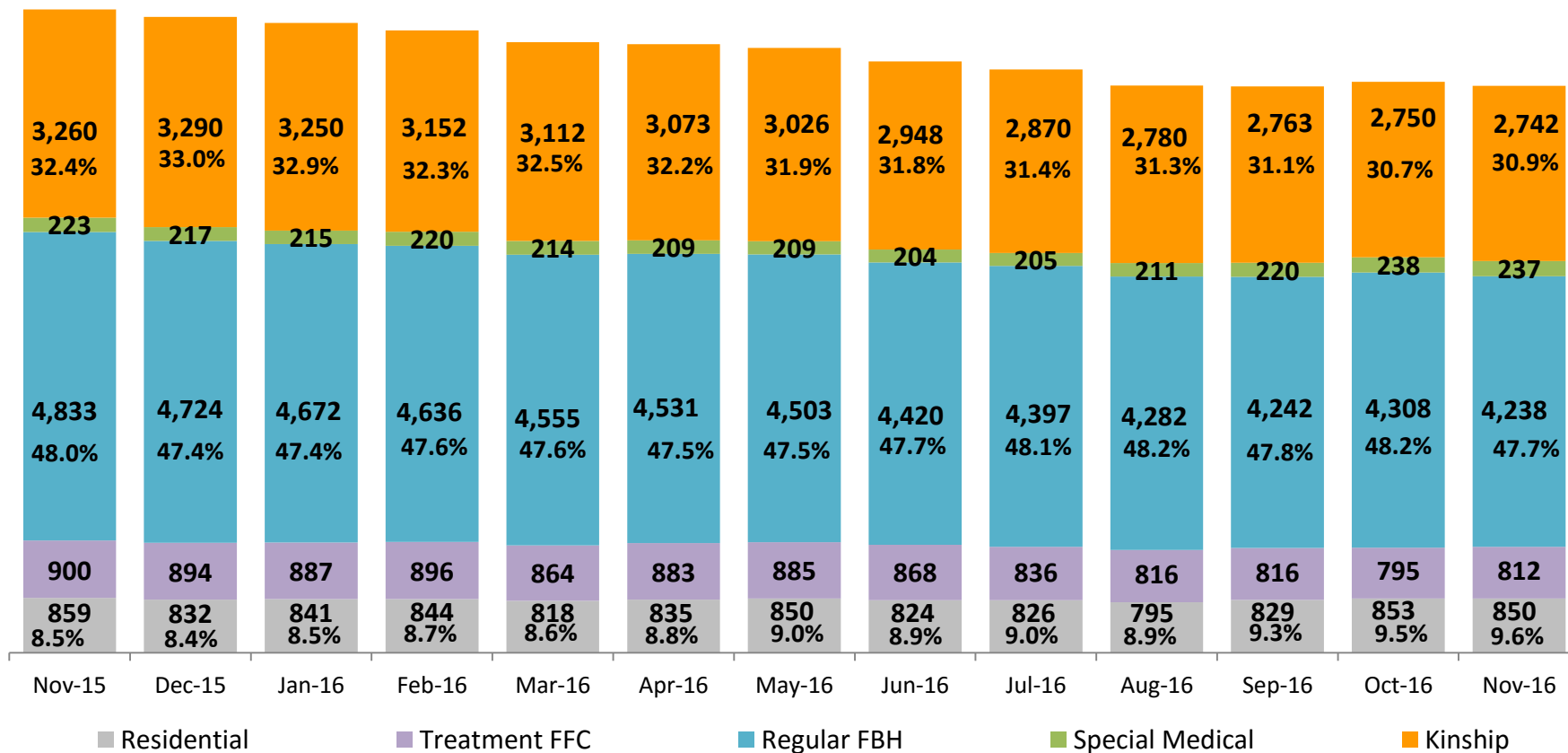


	CY 2013	CY 2014	CY 2015	Jan 2016	Feb 2016	Mar 2016	Apr 2016	May 2016	Jun 2016	Jul 2016	Aug 2016	Sep 2016	Oct 2016	Nov 2016
Placements of Children	4,283	4,160	3,760	306	286	304	307	265	280	299	286	272	365	229

*Excludes JD placements.

Children in Foster Care *

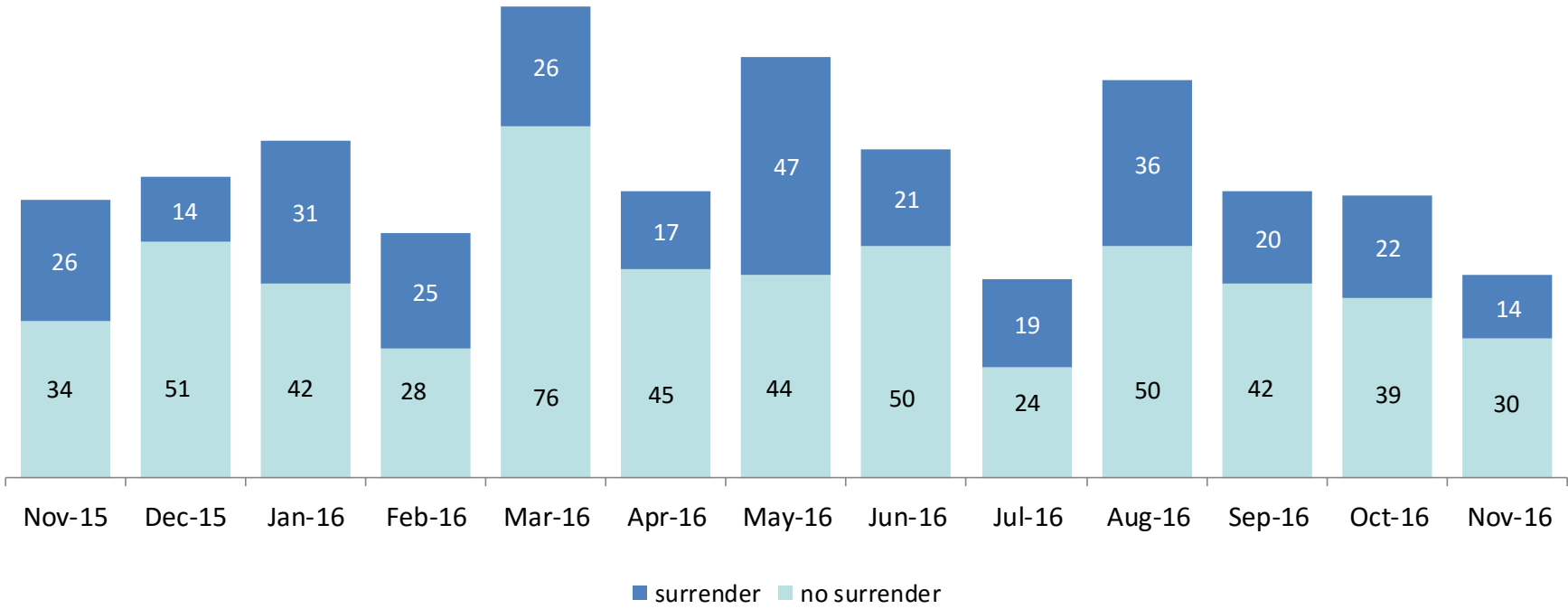
November 2015 – November 2016 (end of month)



	Nov 2015	Dec 2015	Jan 2016	Feb 2016	Mar 2016	Apr 2016	May 2016	Jun 2016	Jul 2016	Aug 2016	Sep 2016	Oct 2016	Nov 2016
Number in Foster Care	10,075	9,957	9,865	9,748	9,563	9,531	9,473	9,264	9,134	8,884	8,870	8,944	8,879

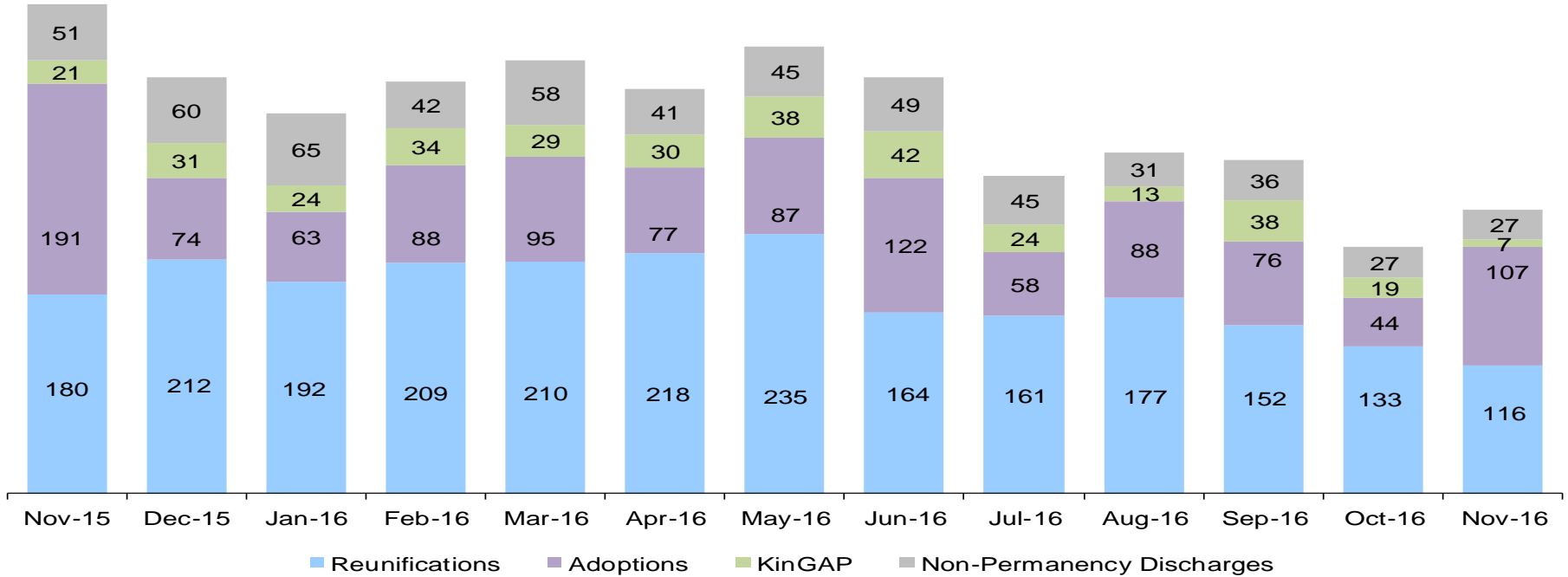
*Excludes JD placements and includes children in 24 hour care and approximately 200 young children who are living in foster homes or residential care facilities with their mothers who are in foster care (8D children).

Children Freed for Adoption, Surrender by at Least One Parent November 2015 – November 2016



	Nov 2015	Dec 2015	Jan 2016	Feb 2016	Mar 2016	Apr 2016	May 2016	Jun 2016	Jul 2016	Aug 2016	Sep 2016	Oct 2016	Nov 2016
Number Freed for Adoption	73	63	73	53	102	62	91	71	43	86	62	61	44

Permanency and Non-Permanency* Discharges from Foster Care** November 2015 – November 2016



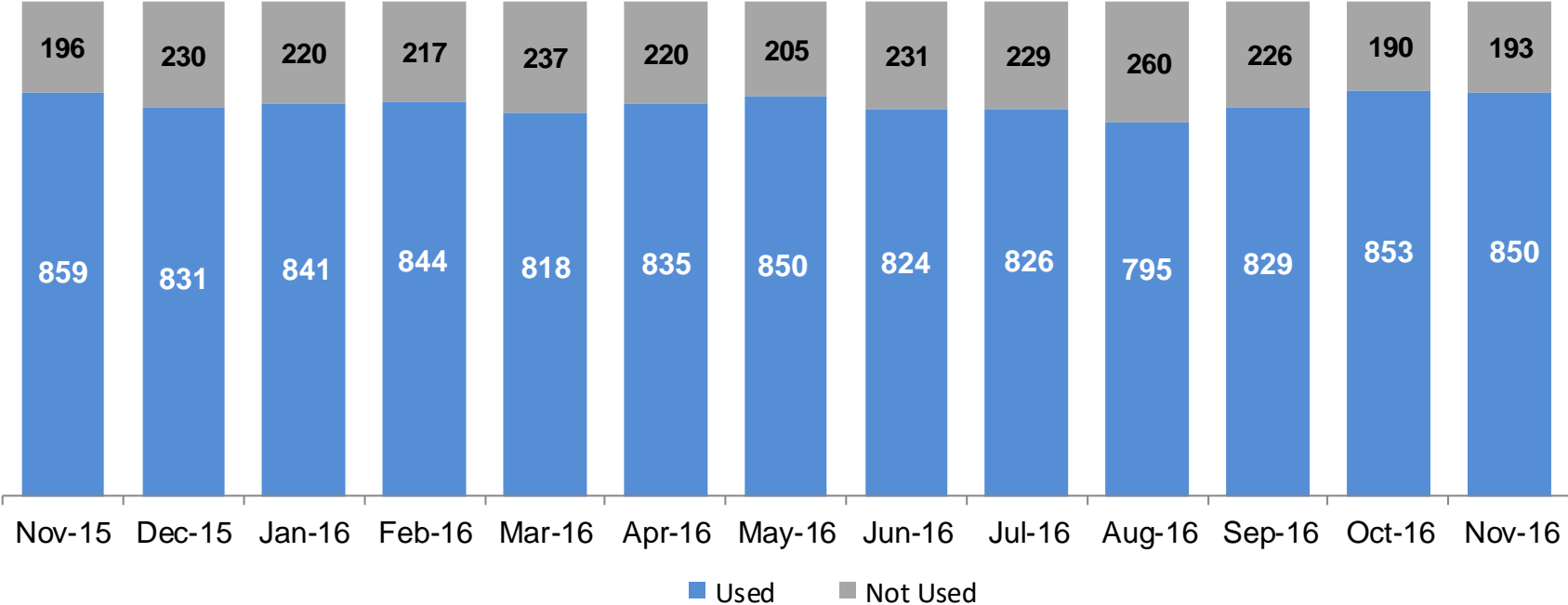
	Nov 2015	Dec 2015	Jan 2016	Feb 2016	Mar 2016	Apr 2016	May 2016	Jun 2016	Jul 2016	Aug 2016	Sep 2016	Oct 2016	Nov 2016
Number of Discharges	443	377	344	373	392	366	405	377	288	309	302	223	257

*Non-permanency discharges include AWOL, APPLA , other discharge destinations such as psychiatric institutions and correctional facilities and discharges with unspecified destinations.

**Excludes discharges of youth who entered care as a JD.

Residential Care Capacity and Utilization

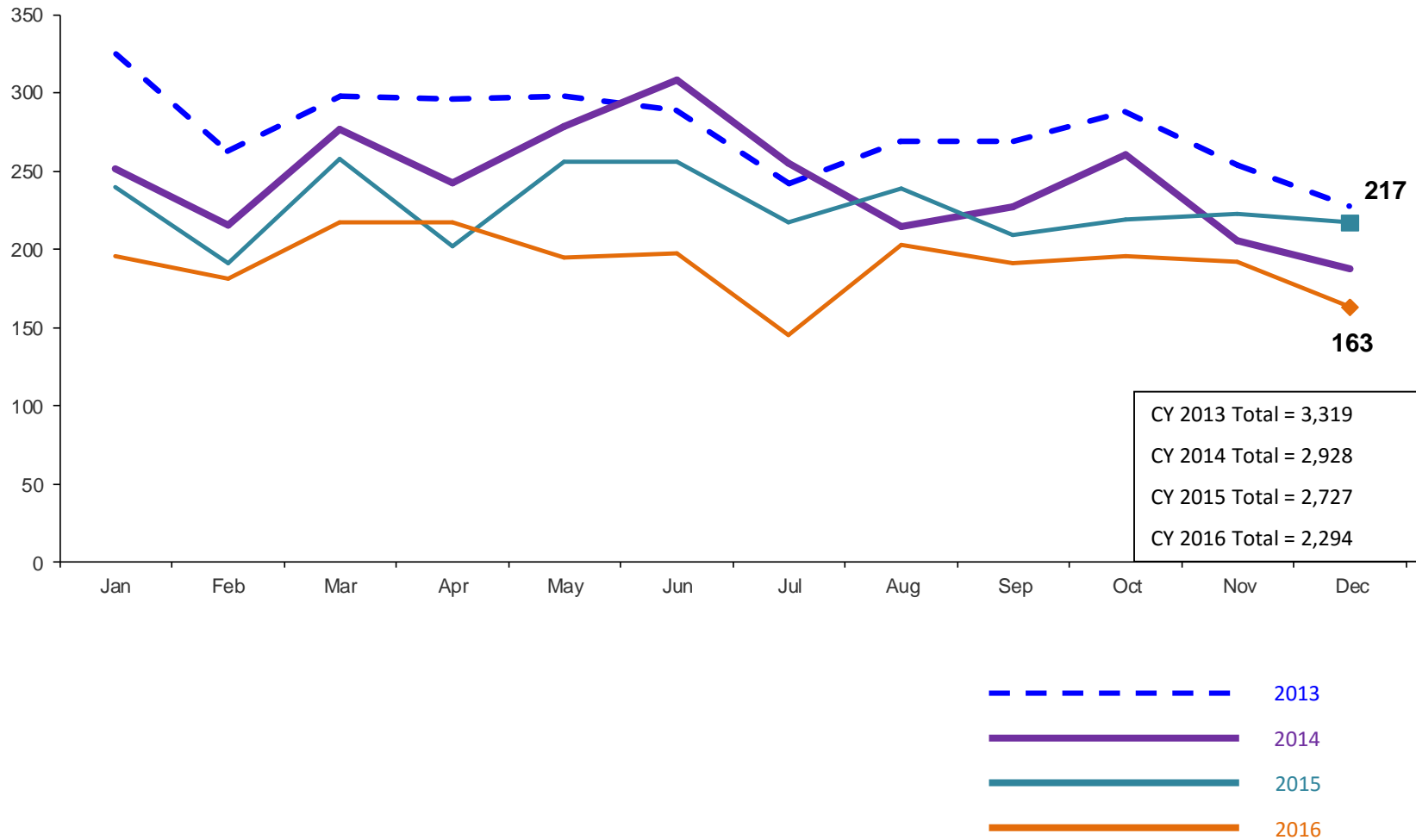
November 2015 – November 2016



	Nov 2015	Dec 2015	Jan 2016	Feb 2016	Mar20 16	Apr 2016	May 2016	Jun 2016	Jul 2016	Aug 2016	Sep 2016	Oct 2016	Nov 2016
Capacity	1,055	1,061	1,061	1,061	1,055	1,055	1,055	1,055	1,055	1,055	1,055	1,043	1,043

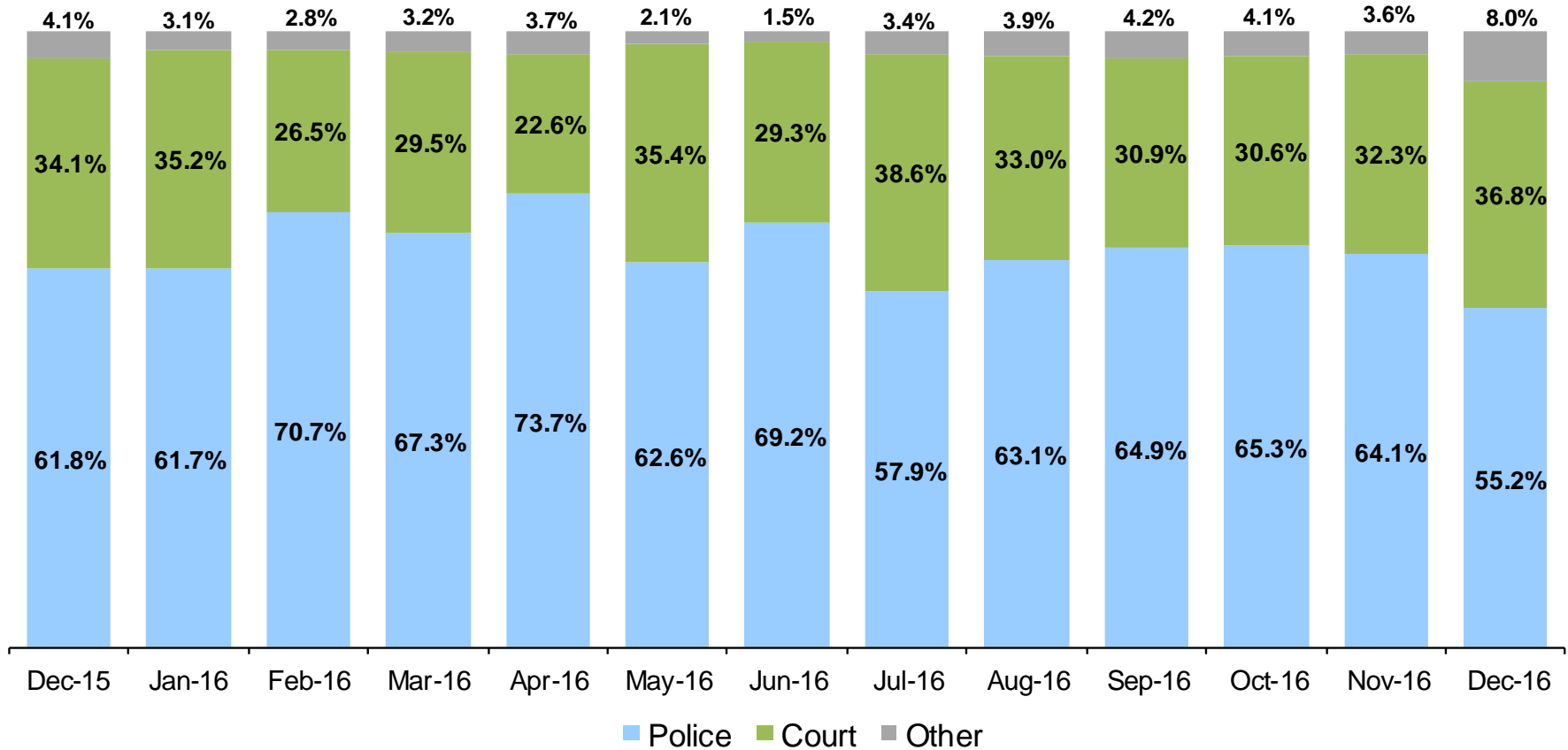
Total Monthly Admissions to Detention

January 2013 – December 2016 (Monthly Total)



Admit Authority on Admissions

December 2015 – December 2016 (Monthly Total)



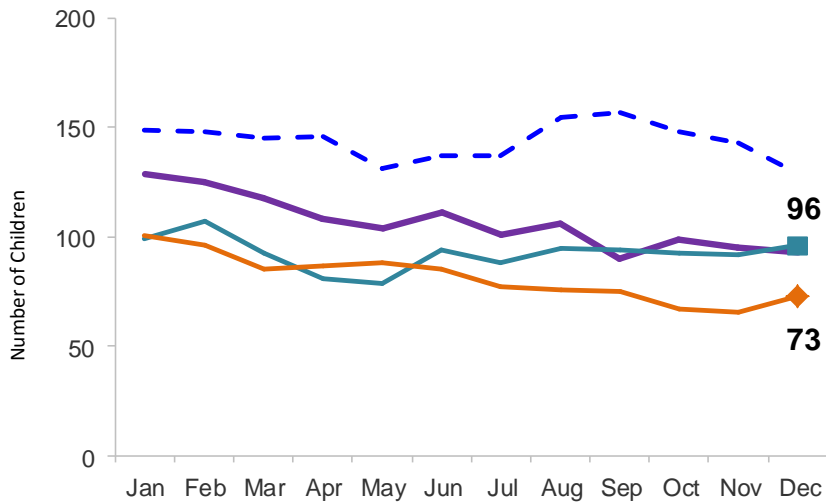
	Dec 2015	Jan 2016	Feb 2016	Mar 2016	Apr 2016	May 2016	Jun 2016	Jul 2016	Aug 2016	Sep 2016	Oct 2016	Nov 2016	Dec 2016
Number of Admissions	217	196	181	217	217	195	198	145	203	191	196	192	163

Note: Other Admit Authority includes the Sheriff Department, Department of Corrections and ACS.

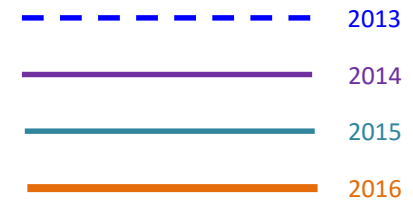
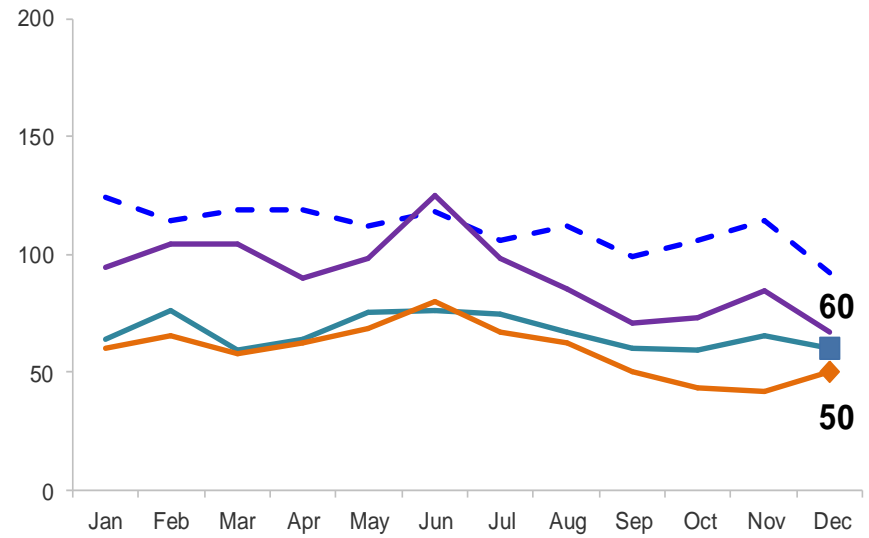
Monthly Average Daily Population

January 2013 – December 2016

Secure Detention

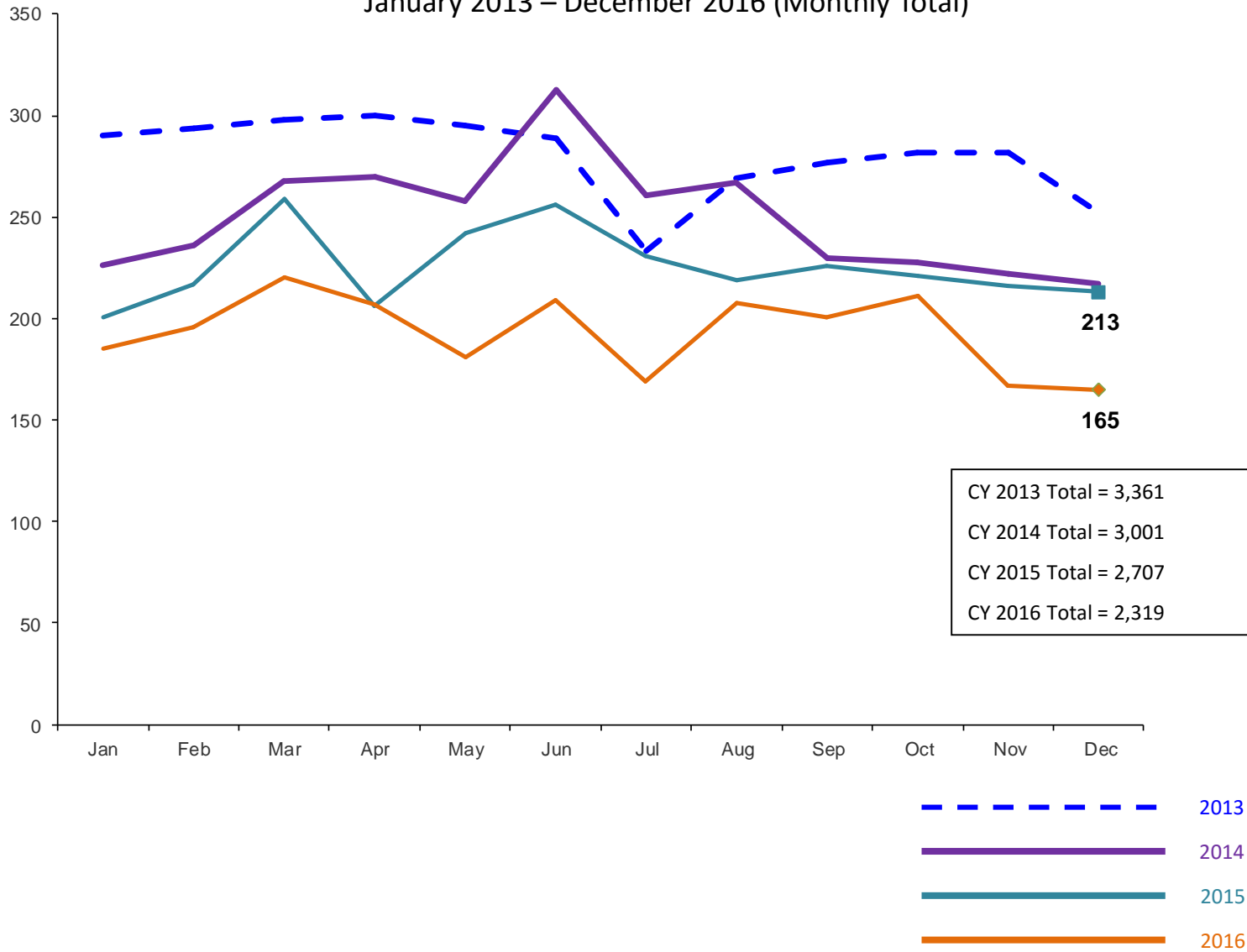


Non-Secure Detention



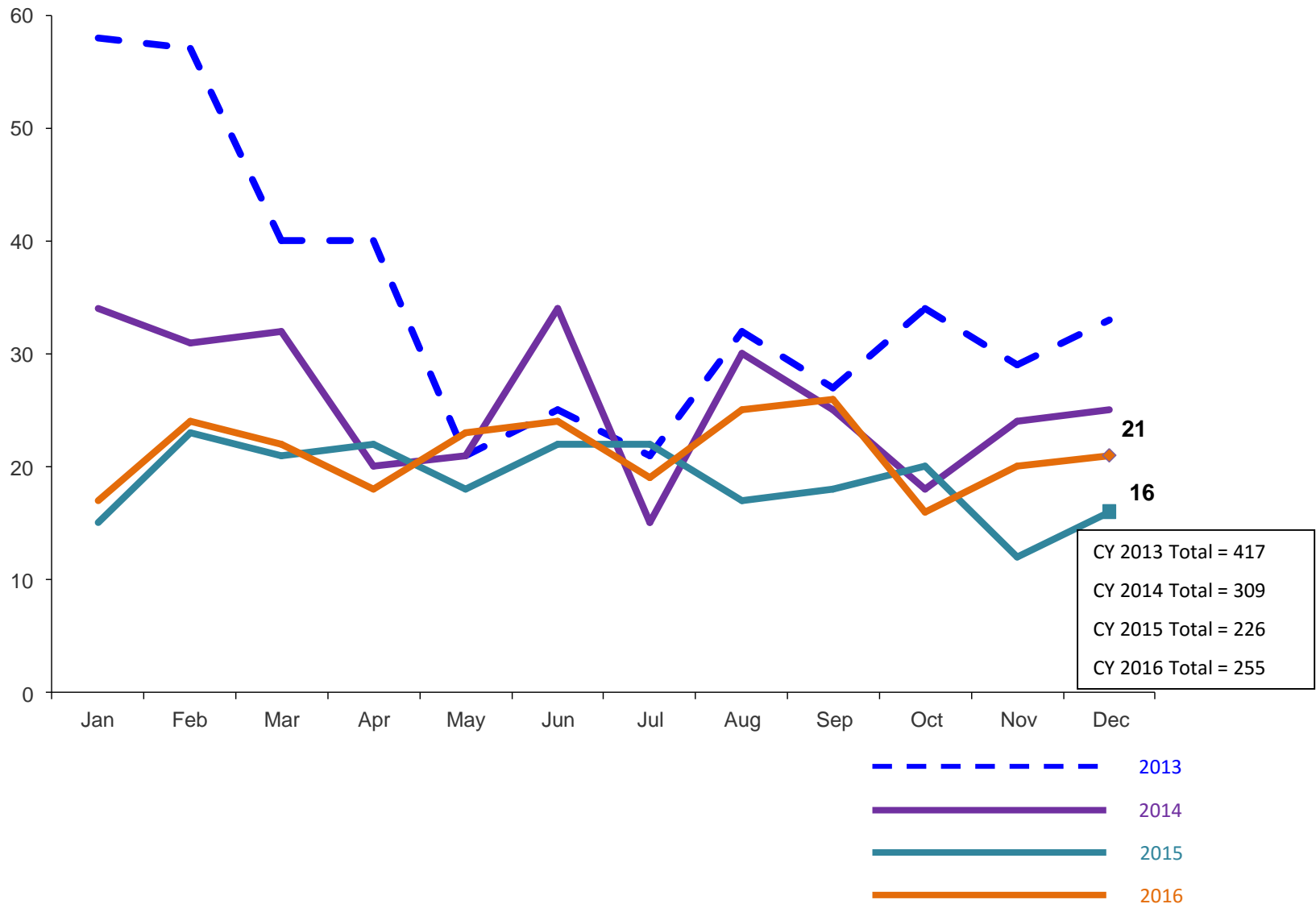
Total Monthly Releases from Detention

January 2013 – December 2016 (Monthly Total)



Close to Home Intakes*

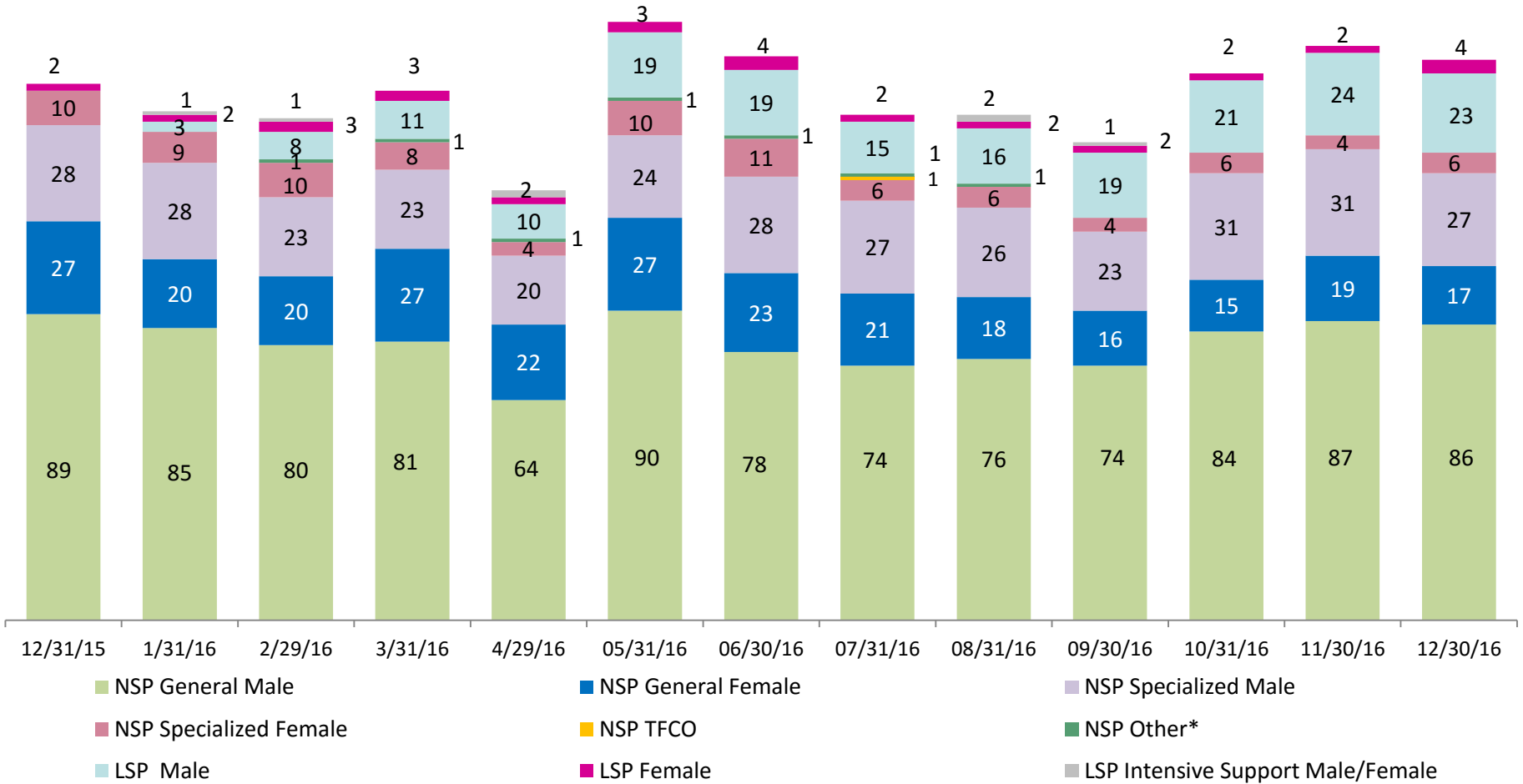
January 2013 – December 2016 (Monthly Total)



*Beginning in December 2015 Close to Home Intakes include LSP as well as NSP.

CTH Placement, in 24-hour Care

December 2015 – December 2016 (end of month)

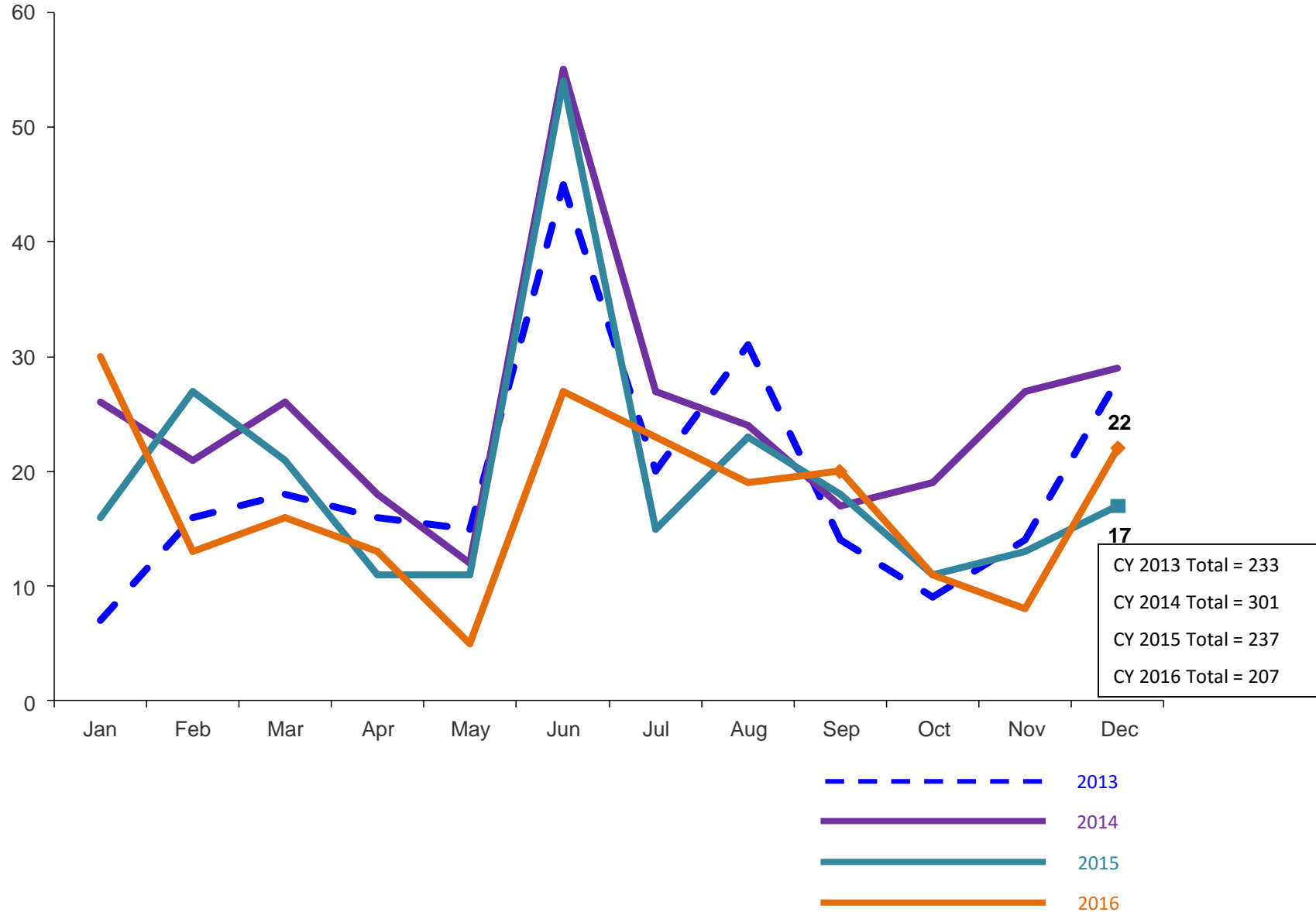


Number in Placement													
	12/31/15	1/31/16	2/29/16	3/31/16	4/29/16	5/31/16	6/30/16	7/31/16	8/31/16	9/30/16	10/31/16	11/30/16	12/30/16
NSP	154	142	134	140	111	152	141	130	127	117	136	141	136
LSP	2	6	12	14	14	22	23	17	20	22	23	26	27

*NSP Other includes youth in child welfare and mother/child placements.

Releases from Close to Home Placement to Aftercare

February 2013 – December 2016 (Monthly Total)



Appendix

Figure 1: SCR Intakes by Borough, OCT 15 - DEC 15 and OCT 16 - DEC 16

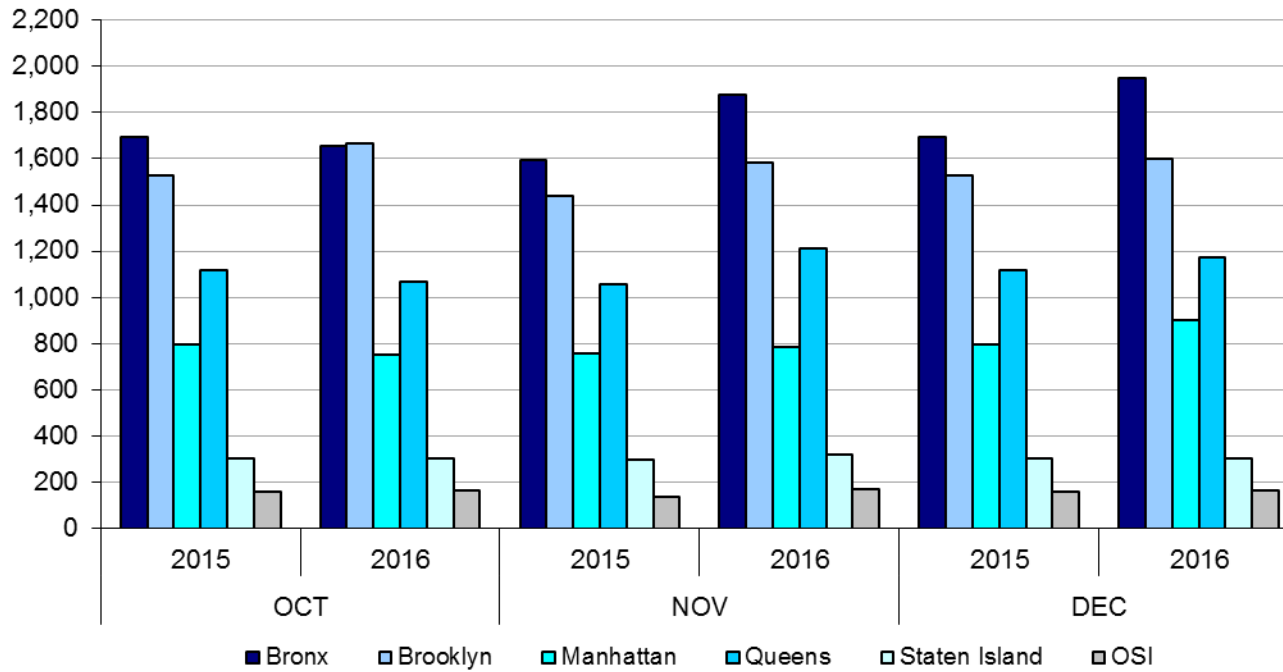


Table 1 - SCR Intake Changes by Borough, OCT 15 - DEC 15 and OCT 16 - DEC 16

Month	Year	Bronx	Brooklyn	Manhattan	Queens	Staten Island	OSI	Other	Total
OCT	2015	1,694	1,526	797	1,117	304	158	129	5,725
	2016	1,656	1,666	754	1,066	304	166	169	5,781
	% Change	-2.2%	9.2%	-5.4%	-4.6%	0.0%	5.1%	31.0%	1.0%
NOV	2015	1,596	1,440	756	1,057	297	137	147	5,430
	2016	1,879	1,585	784	1,213	317	167	126	6,071
	% Change	17.7%	10.1%	3.7%	14.8%	6.7%	21.9%	-14.3%	11.8%
DEC	2015	1,552	1,377	772	1,024	285	124	143	5,277
	2016	1,951	1,597	899	1,172	302	165	149	6,235
	% Change	25.7%	16.0%	16.5%	14.5%	6.0%	33.1%	4.2%	18.2%
Total	2015	4,842	4,343	2,325	3,198	886	419	419	16,432
	2016	5,486	4,848	2,437	3,451	923	498	444	18,087
	% Change	13.3%	11.6%	4.8%	7.9%	4.2%	18.9%	6.0%	10.1%

Figure 2: Citywide SCR Intakes by Reporter Group, OCT 15 - DEC 15 and OCT 16 - DEC 16

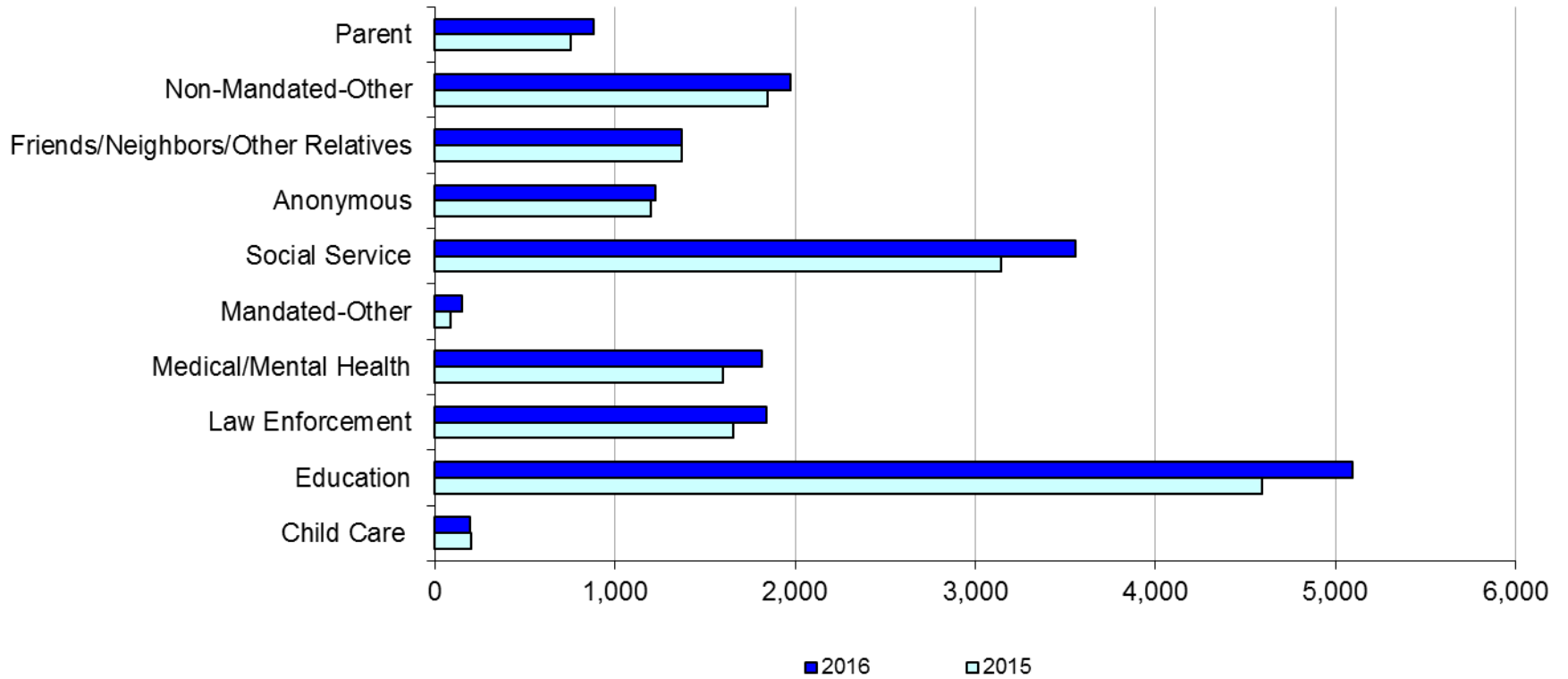
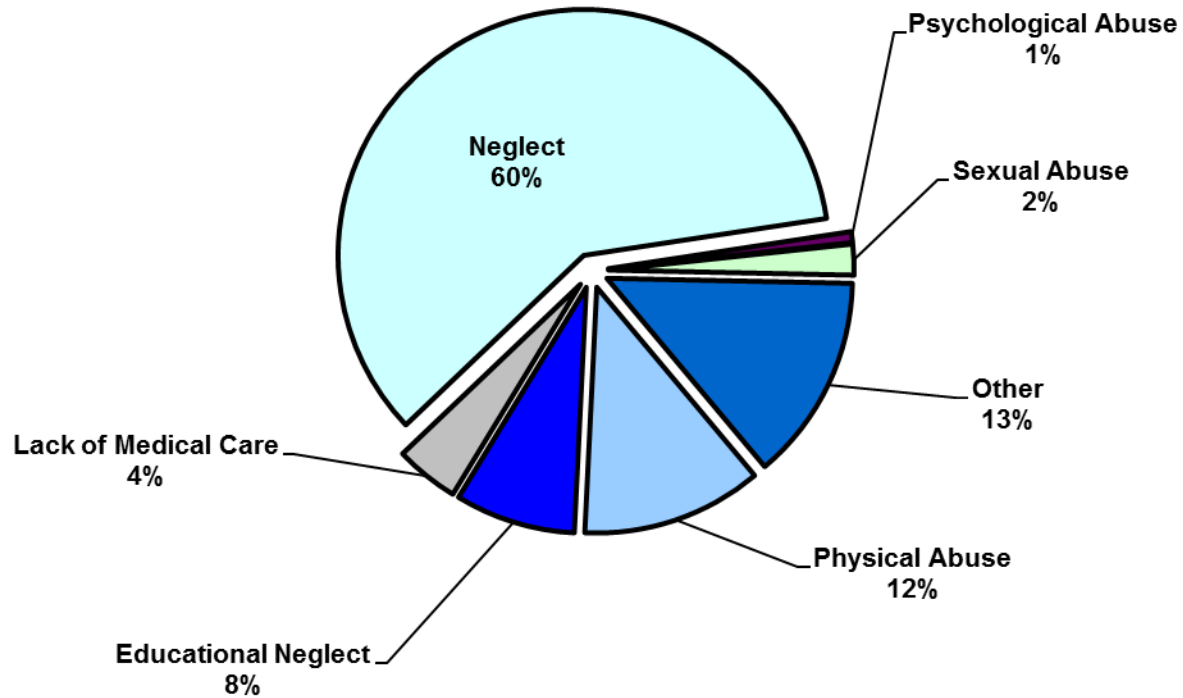


Table 2 - SCR Intakes by Reporter Group, OCT 15 - DEC 15 and OCT 16 - DEC 16

Year	Child Care/ Substitute Care Personnel	Educational Personnel	Law Enforcement	Medical/ Mental Health Personnel	Mandated- Other	Social Service Personnel	Anonymous	Friends/ Neighbors/ Other Relatives	Non-Mandated- Other	Parent	Foster Parent	Total
Bronx												
2015	49	1,352	457	464	27	963	365	400	573	193	0	4,843
2016	72	1,659	498	540	30	1,094	353	405	604	233	1	5,489
% Change	46.9%	22.7%	9.0%	16.4%	11.1%	13.6%	-3.3%	1.3%	5.4%	20.7%	--	13.3%
Brooklyn												
2015	52	1,299	473	388	22	757	344	366	453	185	2	4,341
2016	42	1,365	586	458	44	879	335	383	530	229	2	4,853
% Change	-19.2%	5.1%	23.9%	18.0%	100.0%	16.1%	-2.6%	4.6%	17.0%	23.8%	0.0%	11.8%
Manhattan												
2015	28	540	294	266	11	484	150	185	257	107	0	2,322
2016	22	551	261	287	31	518	191	193	284	99	0	2,437
% Change	-21.4%	2.0%	-11.2%	7.9%	181.8%	7.0%	27.3%	4.3%	10.5%	-7.5%	--	5.0%
Queens												
2015	29	1,045	263	314	15	628	194	265	318	127	0	3,198
2016	21	1,127	295	317	27	685	210	250	363	155	1	3,451
% Change	-27.6%	7.8%	12.2%	1.0%	80.0%	9.1%	8.2%	-5.7%	14.2%	22.0%	--	7.9%
Staten Island												
2015	13	281	82	87	7	109	90	104	88	25	0	886
2016	10	293	84	95	6	159	79	82	76	39	0	923
% Change	-23.1%	4.3%	2.4%	9.2%	-14.3%	45.9%	-12.2%	-21.2%	-13.6%	56.0%	--	4.2%
OSI												
2015	26	33	15	34	6	71	36	23	107	67	1	419
2016	23	48	29	46	7	90	40	30	91	94	0	498
% Change	-11.5%	45.5%	93.3%	35.3%	16.7%	26.8%	11.1%	30.4%	-15.0%	40.3%	-100.0%	18.9%
Other												
2015	3	40	75	49	2	131	22	28	53	49	0	452
2016	3	50	86	74	4	131	15	31	28	30	1	453
% Change	0.0%	25.0%	14.7%	51.0%	100.0%	0.0%	-31.8%	10.7%	-47.2%	-38.8%	--	0.2%
Citywide												
2015	200	4,590	1,659	1,602	90	3,143	1,201	1,371	1,849	753	3	16,461
2016	193	5,093	1,839	1,817	149	3,556	1,223	1,374	1,976	879	5	18,104
% Change	-3.5%	11.0%	10.8%	13.4%	65.6%	13.1%	1.8%	0.2%	6.9%	16.7%	66.7%	10.0%

Figure 3: SCR Allegations, OCT 16 – DEC 16



Total Allegations = 44,965

Allegations are grouped as follows: Physical Abuse - burn, fatality, fracture, choking, twisting, shaking, excessive corporal punishment, internal injuries, lacerations, bruises, welts, poisoning, noxious substances; Educational Neglect – educational neglect; Lack of Medical Care – lack of medical care; Neglect - inadequate guardianship, inadequate food, clothing, shelter, lack of supervision, malnutrition, failure to thrive, swelling, dislocations, sprains; Psychological Abuse - isolation, emotional neglect; Sexual Abuse – sexual abuse; and Other -parental drug use, child drug use, abandonment, inappropriate custodial conduct.

TABLE 3 - SCR Allegations, OCT 15 - DEC 15 and OCT 16 - DEC 16

Year	Physical Abuse	Educational Neglect	Lack of Medical Care	Neglect	Psychological Abuse	Sexual Abuse	Other	Total
Bronx								
2015	1,510	1,151	514	7,911	65	235	1,675	13,061
2016	1,537	1,376	651	8,407	109	255	1,879	14,214
% Change	1.8%	19.5%	26.7%	6.3%	67.7%	8.5%	12.2%	8.8%
Brooklyn								
2015	1,392	1,053	409	6,689	49	231	1,474	11,297
2016	1,431	1,003	461	6,998	62	246	1,584	11,785
% Change	2.8%	-4.7%	12.7%	4.6%	26.5%	6.5%	7.5%	4.3%
Manhattan								
2015	570	368	222	2938	26	107	631	4,862
2016	577	383	238	3208	47	116	689	5,258
% Change	1.2%	4.1%	7.2%	9.2%	80.8%	8.4%	9.2%	8.1%
Queens								
2015	1,081	441	263	4,311	55	148	1,073	7,372
2016	1,053	523	335	4,734	77	148	1,104	7,974
% Change	-2.6%	18.6%	27.4%	9.8%	40.0%	0.0%	2.9%	8.2%
Staten Island								
2015	256	179	101	1,459	17	43	403	2,458
2016	293	169	86	1,587	13	33	484	2,665
% Change	14.5%	-5.6%	-14.9%	8.8%	-23.5%	-23.3%	20.1%	8.4%
OSI								
2015	236	41	55	1,062	3	59	172	1,628
2016	337	61	69	1,291	9	80	176	2,023
% Change	42.8%	48.8%	25.5%	21.6%	200.0%	35.6%	2.3%	24.3%
Other								
2015	140	33	42	677	5	35	232	1,164
2016	118	50	44	617	5	30	182	1,046
% Change	-15.7%	51.5%	4.8%	-8.9%	0.0%	-14.3%	-21.6%	-10.1%
Citywide								
2015	5,185	3,266	1,606	25,047	220	858	5,660	41,842
2016	5,346	3,565	1,884	26,842	322	908	6,098	44,965
% Change	3.1%	9.2%	17.3%	7.2%	46.4%	5.8%	7.7%	7.5%

**TABLE 4 - Child Welfare Preventive Cases
Opened and Closed
January 2013 to December 2016**

Month	Opened Cases	Closed Cases
2013		
Jan-13	753	884
Feb-13	742	916
Mar-13	801	1,171
Apr-13	785	988
May-13	682	1,337
Jun-13	775	780
Jul-13	802	1,004
Aug-13	777	1,084
Sep-13	727	724
Oct-13	780	765
Nov-13	725	685
Dec-13	946	552
2014		
Jan-14	841	640
Feb-14	885	679
Mar-14	998	874
Apr-14	919	896
May-14	919	888
Jun-14	890	762
Jul-14	973	1,077
Aug-14	826	943
Sep-14	841	705
Oct-14	835	819
Nov-14	677	638
Dec-14	1,062	721
2015		
Jan-15	728	716
Feb-15	902	590
Mar-15	1,122	686
Apr-15	977	743
May-15	914	842
Jun-15	1,068	797
Jul-15	899	1,070
Aug-15	893	891
Sep-15	764	847
Oct-15	749	772
Nov-15	746	652
Dec-15	1,013	707
2016		
Jan-16	792	668
Feb-16	897	667
Mar-16	1,029	869
Apr-16	836	794
May-16	890	709
Jun-16	996	700
Jul-16	842	784
Aug-16	897	755
Sep-16	821	645
Oct-16	776	517
Nov-16	728	386
Dec-16	798	365

**Table 5 - Referrals to Child Welfare Preventive Services by Source
January 2013 to December 2016**

Month	Total Referrals	Division of Child Protection	Foster Care Agencies	PPRS Transfer	School	Self	Other Sources*
2013							
Jan-13	1,474	74.1%	1.2%	7.3%	1.2%	3.7%	12.5%
Feb-13	1,308	75.8%	1.1%	8.0%	1.6%	2.9%	10.6%
Mar-13	1,270	73.5%	1.2%	6.7%	2.4%	3.9%	12.3%
Apr-13	1,421	77.9%	0.8%	7.4%	0.9%	3.0%	10.1%
May-13	1,320	68.4%	0.5%	10.2%	1.5%	3.8%	15.5%
Jun-13	953	69.2%	1.2%	9.4%	2.6%	5.0%	12.6%
Jul-13	1,014	66.3%	1.9%	14.4%	1.6%	3.9%	11.9%
Aug-13	1,212	70.5%	0.7%	11.8%	0.7%	4.7%	11.6%
Sep-13	1,262	64.0%	2.1%	11.3%	1.7%	6.7%	14.2%
Oct-13	1,319	61.0%	1.1%	9.0%	2.9%	7.5%	18.5%
Nov-13	1,249	55.9%	1.6%	10.5%	4.6%	9.2%	18.3%
Dec-13	1,464	62.2%	1.2%	8.2%	2.3%	9.2%	17.0%
CY 2013	15,266	68.3%	1.2%	9.4%	2.0%	5.3%	13.8%
2014							
Jan-14	1,537	70.0%	1.2%	6.6%	2.3%	5.8%	14.2%
Feb-14	1,334	69.7%	0.8%	8.4%	1.7%	5.5%	13.9%
Mar-14	1,612	70.0%	1.4%	8.6%	1.6%	5.3%	13.1%
Apr-14	1,525	70.2%	0.9%	7.6%	2.1%	3.7%	15.4%
May-14	1,580	74.4%	0.7%	8.3%	1.4%	5.2%	10.0%
Jun-14	1,550	78.6%	1.2%	6.3%	1.2%	3.2%	9.4%
Jul-14	1,659	79.6%	1.5%	6.7%	0.4%	4.2%	7.6%
Aug-14	1,395	72.2%	1.6%	10.8%	0.3%	4.9%	10.3%
Sep-14	1,597	49.4%	1.5%	7.6%	0.3%	4.5%	36.8%
Oct-14	1,634	68.2%	1.9%	10.0%	1.2%	4.6%	14.1%
Nov-14	1,311	66.4%	0.9%	14.3%	2.4%	3.9%	12.1%
Dec-14	1,785	71.1%	1.4%	8.8%	2.9%	4.8%	11.0%
CY 2014	18,519	70.1%	1.3%	8.6%	1.5%	4.6%	14.0%
2015							
Jan-15	1,430	74.4%	1.6%	8.7%	1.8%	3.8%	9.7%
Feb-15	1,538	76.5%	0.8%	8.1%	1.8%	4.7%	8.2%
Mar-15	1,798	74.6%	0.9%	7.3%	1.6%	4.8%	10.8%
Apr-15	1,719	78.2%	1.3%	7.2%	0.6%	3.5%	9.1%
May-15	1,561	77.2%	1.0%	5.1%	1.5%	4.5%	10.8%
Jun-15	1,716	77.4%	1.1%	7.7%	1.2%	3.5%	9.1%
Jul-15	1,511	79.6%	0.9%	7.2%	0.3%	3.8%	8.2%
Aug-15	1,418	79.3%	2.2%	7.8%	0.2%	3.1%	7.5%
Sep-15	1,209	72.1%	2.8%	10.4%	0.5%	5.5%	8.6%
Oct-15	1,338	70.4%	1.9%	8.3%	2.1%	5.8%	11.6%
Nov-15	1,220	68.2%	1.8%	9.6%	1.4%	6.2%	12.8%
Dec-15	1,526	73.5%	1.6%	8.0%	2.0%	5.0%	9.9%
2016							
Jan-16	1,370	73.6%	1.6%	8.2%	0.7%	5.4%	10.6%
Feb-16	1,436	75.8%	2.2%	7.8%	1.0%	3.8%	9.3%
Mar-16	1,557	72.0%	2.1%	8.8%	1.0%	4.6%	11.4%
Apr-16	1,378	76.1%	1.5%	7.4%	1.5%	3.5%	10.0%
May-16	1,386	73.4%	1.4%	8.7%	1.0%	4.7%	10.8%
Jun-16	1,564	77.2%	2.4%	6.2%	1.5%	4.1%	8.6%
Jul-16	1,338	80.3%	1.7%	6.4%	1.0%	4.2%	6.4%
Aug-16	1,385	79.1%	1.8%	7.1%	0.4%	4.0%	7.6%
Sep-16	1,297	77.8%	2.1%	7.5%	0.8%	4.5%	7.4%
Oct-16	1,247	70.1%	2.0%	7.6%	1.5%	5.9%	12.9%
Nov-16	1,230	67.7%	2.0%	7.9%	1.2%	5.4%	15.8%
Dec-16	1,160	77.3%	1.3%	7.2%	0.9%	3.4%	9.7%

*Other Community Sources includes the Department of Homeless Services, Family Court, FAP, Hospitals and Medical facilities, the NYC Housing Authority, Probation, and Sponsor Agencies.