

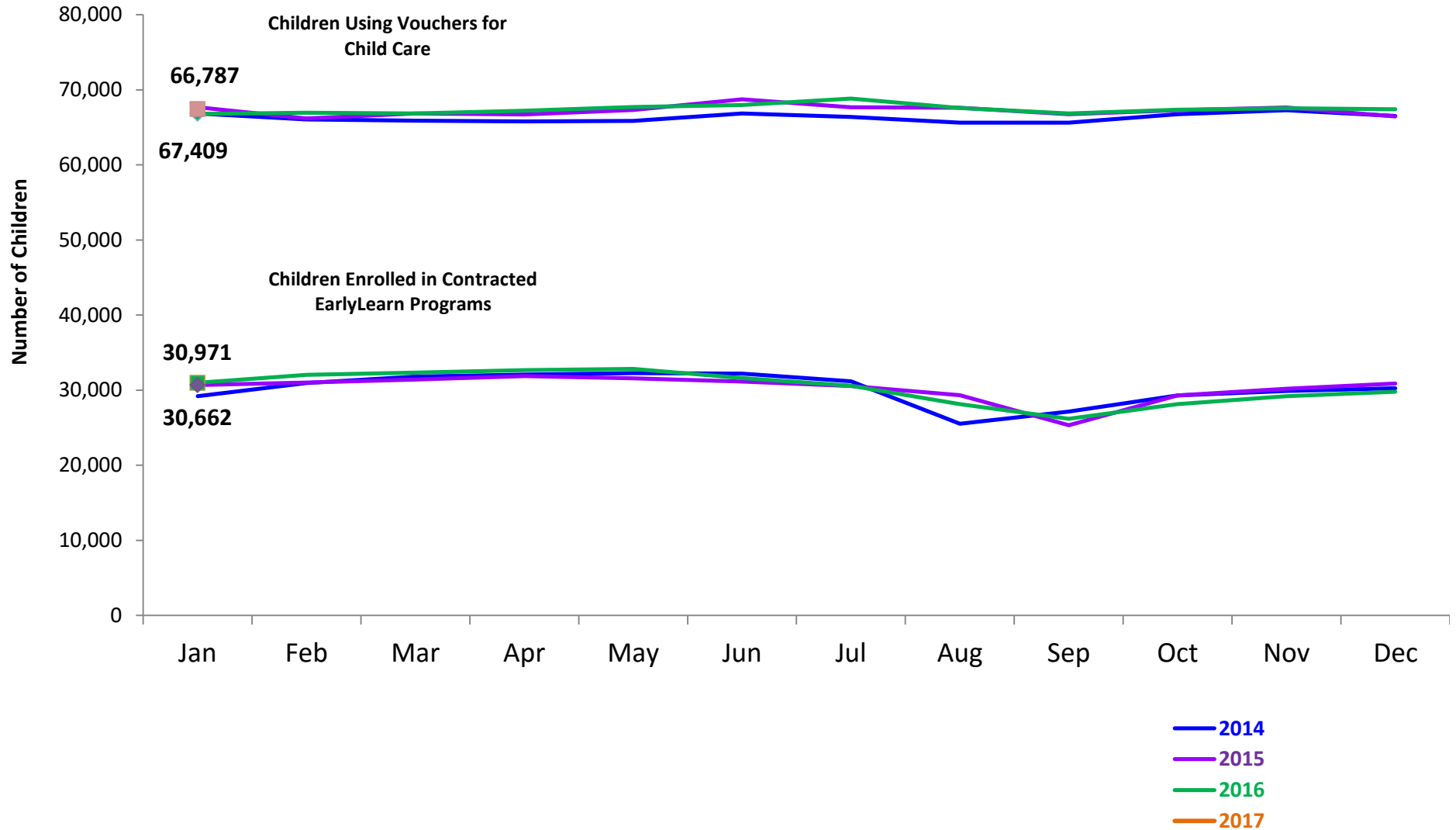


Flash

February 2017

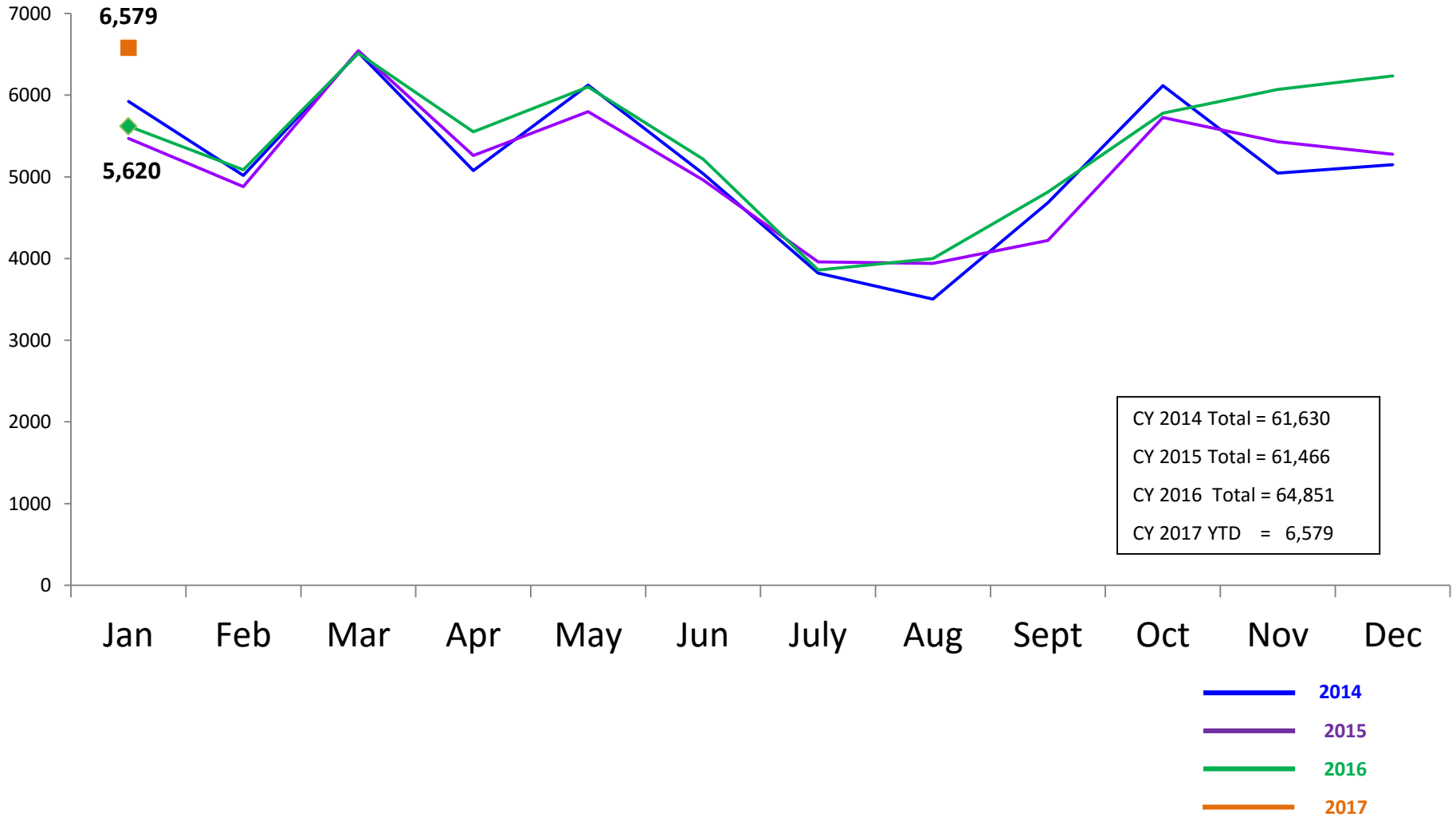
Children Enrolled in Contracted EarlyLearn Programs and Children Using Vouchers for Child Care

January 2014 – January 2017 (End of Month)

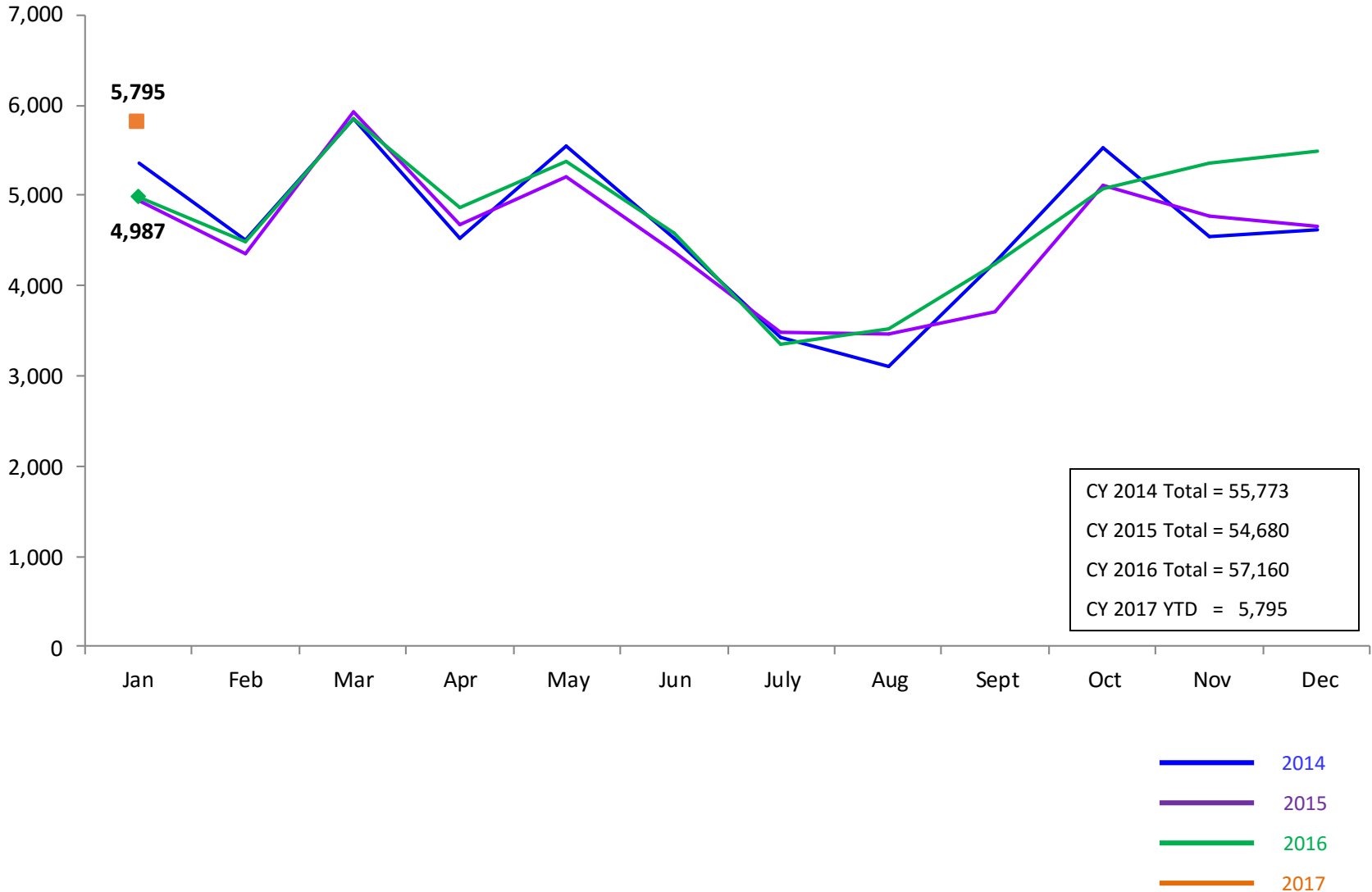


SCR Intakes

January 2014 – January 2017 (Monthly Total)

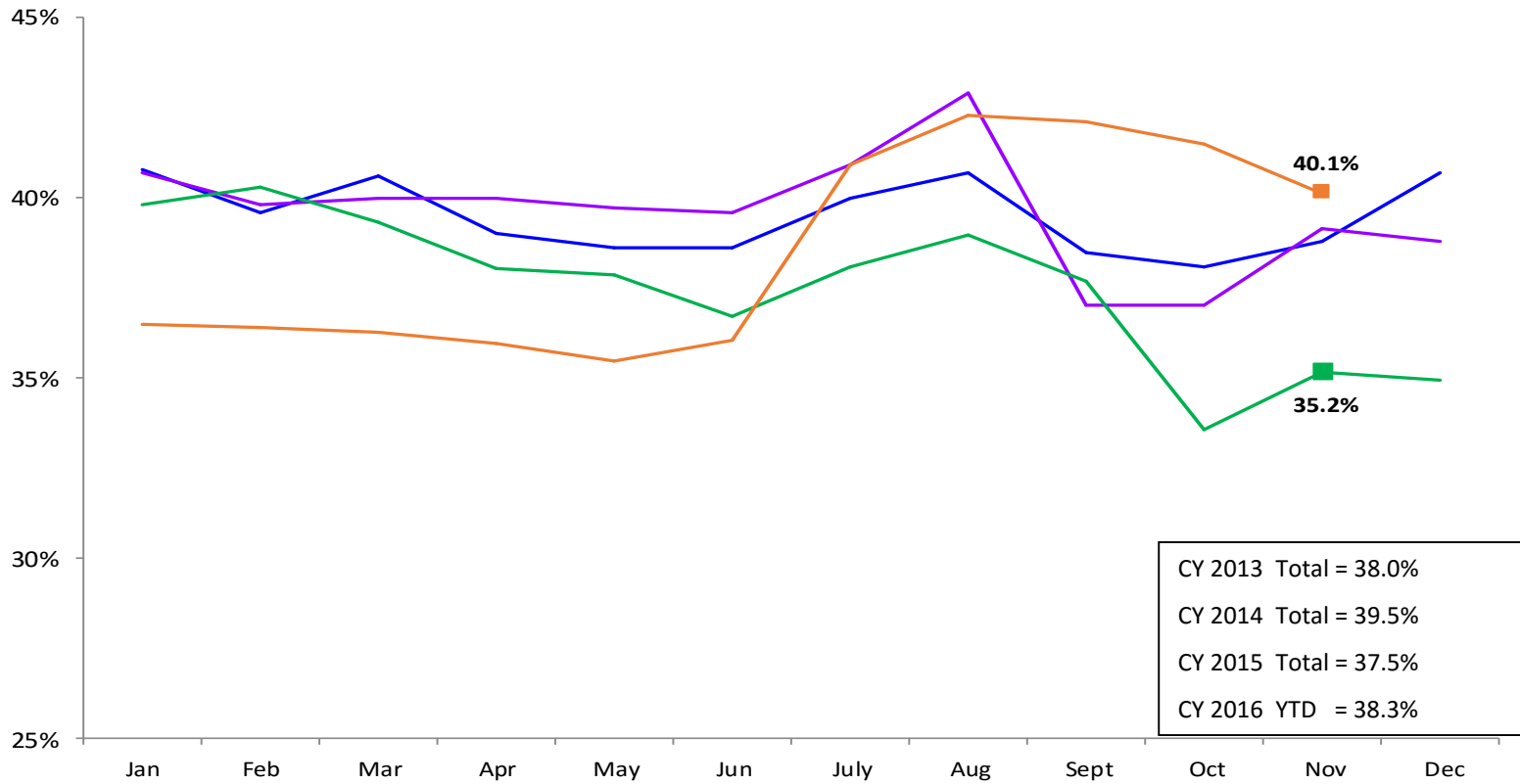


SCR Consolidated Investigations January 2014 – January 2017 (Monthly Total)



SCR Investigation Indication Rate

January 2013 – November 2016

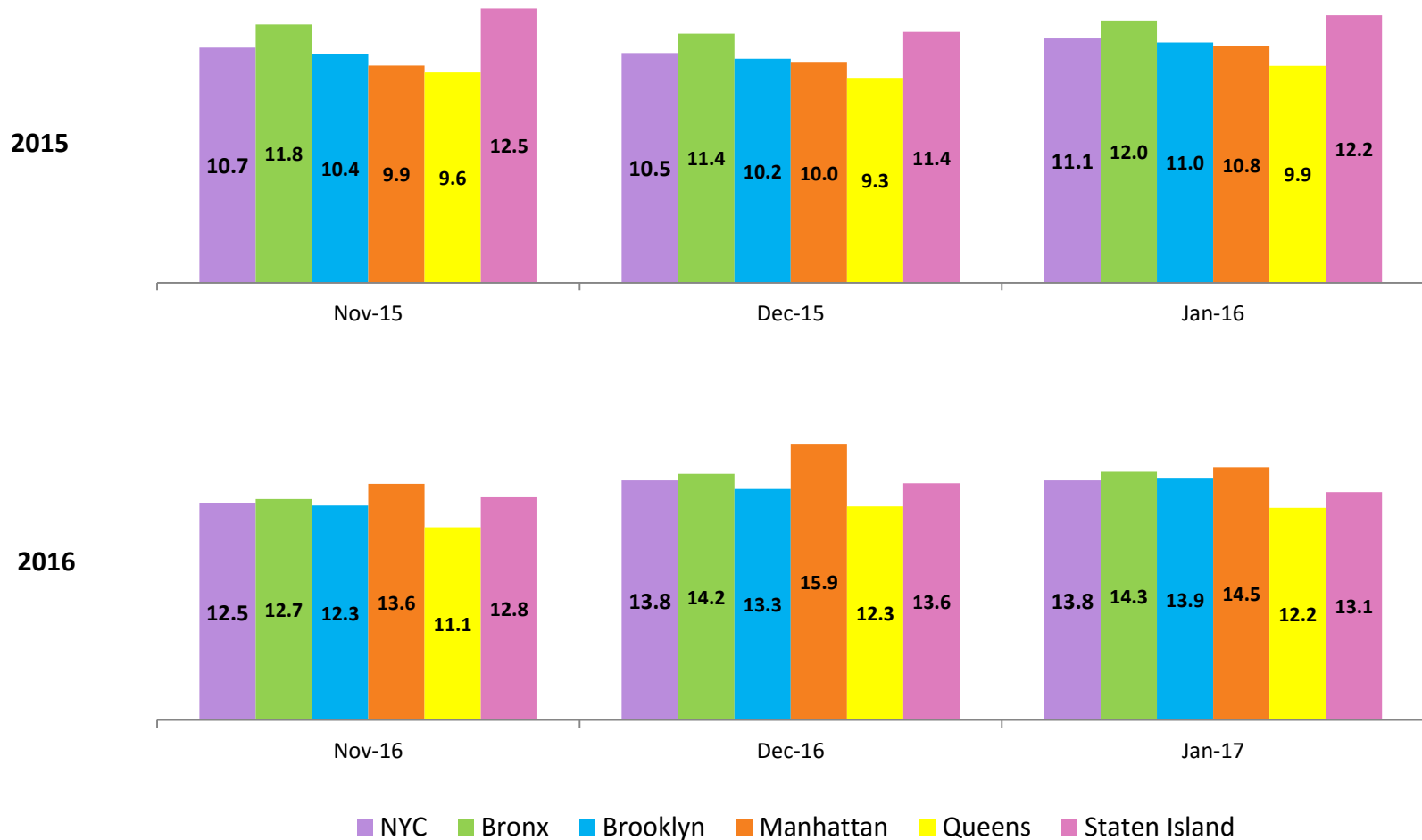


CY 2013 Total = 38.0%
 CY 2014 Total = 39.5%
 CY 2015 Total = 37.5%
 CY 2016 YTD = 38.3%

- 2013
- 2014
- 2015
- 2016

Average P/D Combined Caseload*

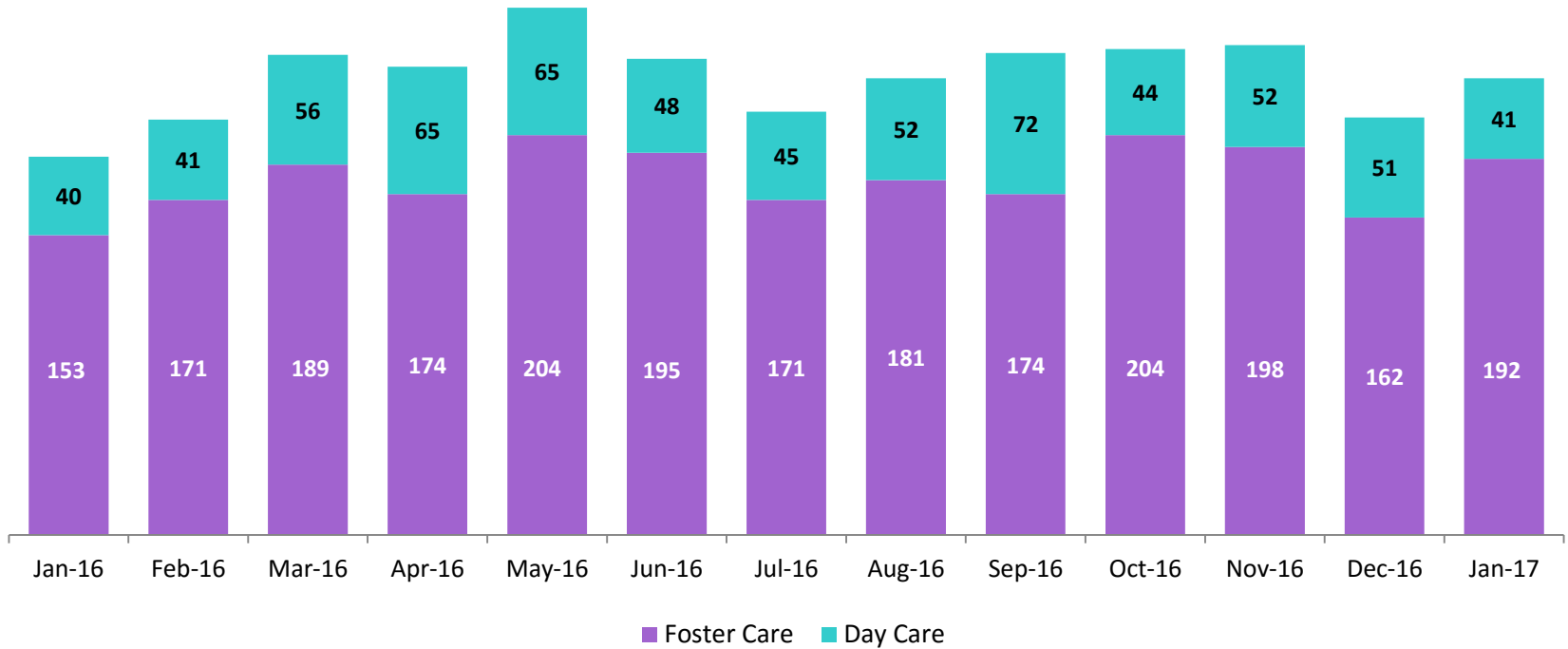
November 2015 – January 2016 & November 2016 – January 2017



* Caseloads are of protective/diagnostic caseworkers only and exclude the caseloads carried by Level I and Level II Supervisors.

OSI Investigations

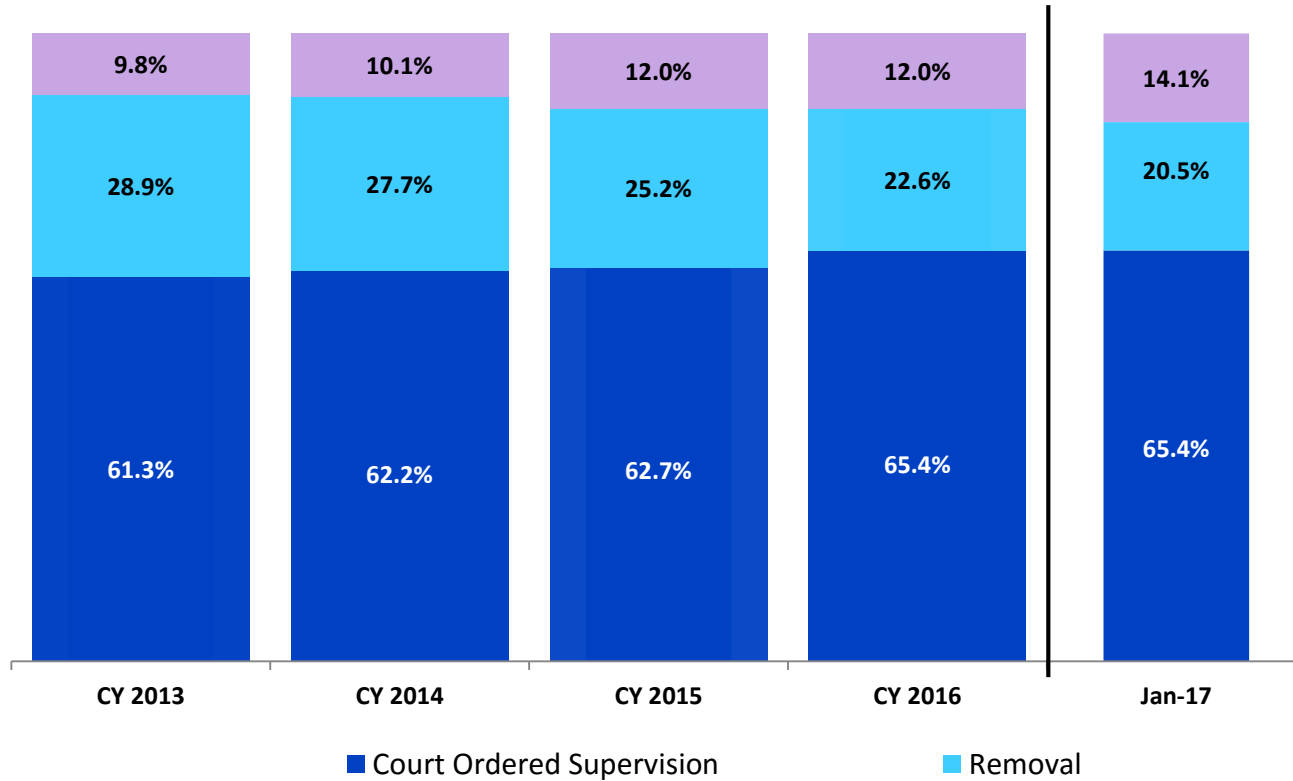
January 2016 – January 2017



	Jan 2016	Feb 2016	Mar 2016	Apr 2016	May 2016	Jun 2016	Jul 2016	Aug 2016	Sep 2016	Oct 2016	Nov 2016	Dec 2016	Jan 2017
Number of Investigations	193	212	245	239	269	243	216	233	246	248	250	213	233

Article 10 Filings and Initial Hearing Outcomes, Children

CY 2013 – January 2017

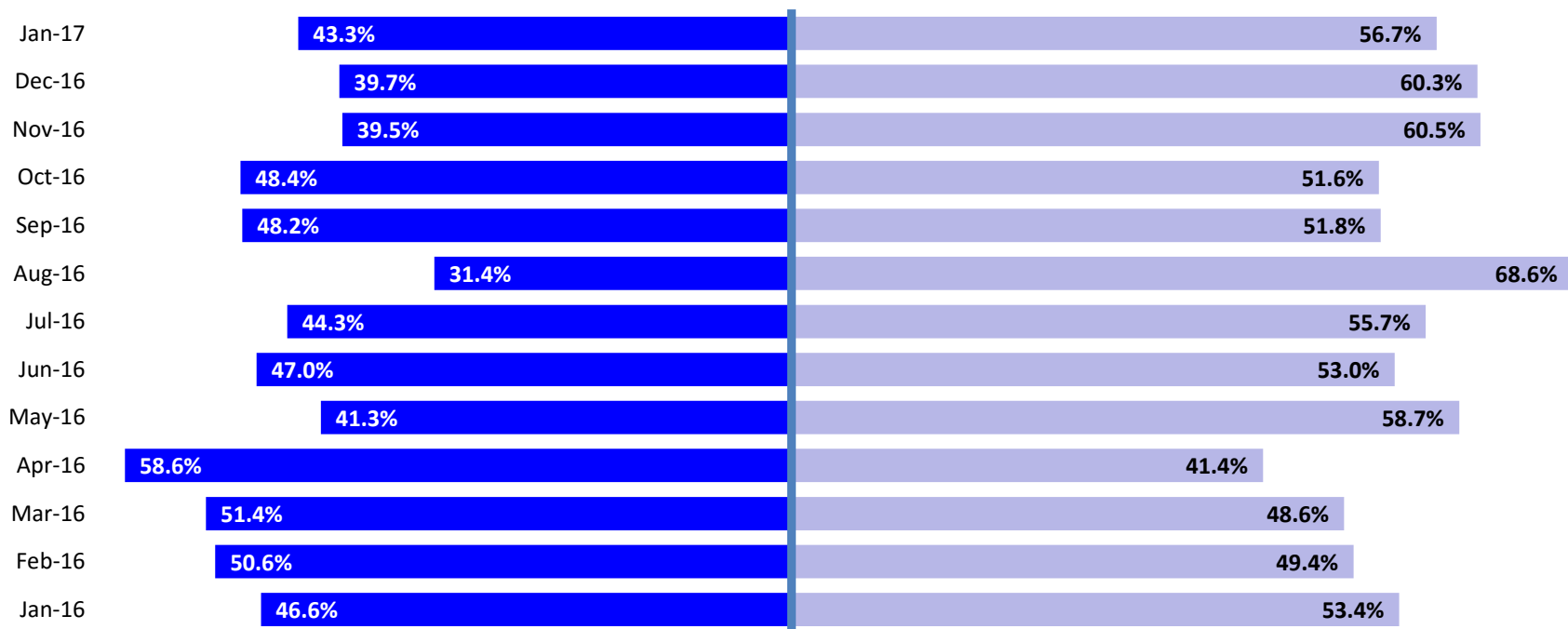


	CY 2013	CY 2014	CY 2015	CY 2016	Jan 2017
Children w/ Article 10 Filings	9,318	9,900	10,257	11,453	1,354

Note: The category “Other/Unspecified” includes released with no supervision, no order issued and no outcome specified.

Article 10 Filing Removals, Court Approved at Initial Hearing, Children

January 2016 – January 2017

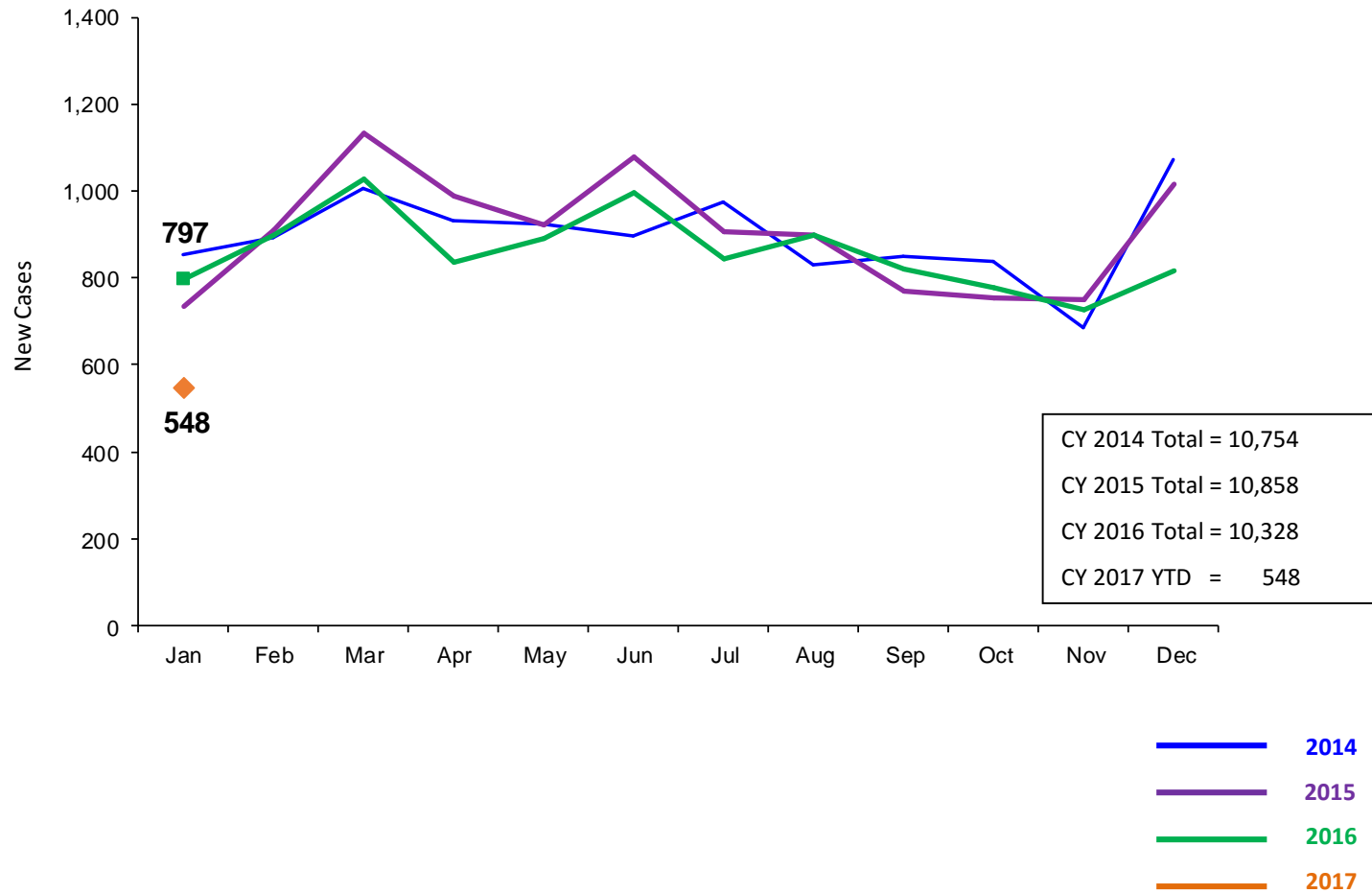


■ Pre-Filing Emergency Removals (court approved at initial hearing) ■ Post-Filing Removals (court ordered at initial hearing)

	Jan 2016	Feb 2016	Mar 2016	Apr 2016	May 2016	June 2016	July 2016	Aug 2016	Sep 2016	Oct 2016	Nov 2016	Dec 2016	Jan 2017
Children Removed	191	243	208	181	150	183	210	204	199	312	223	287	277

New Child Welfare Preventive Cases*

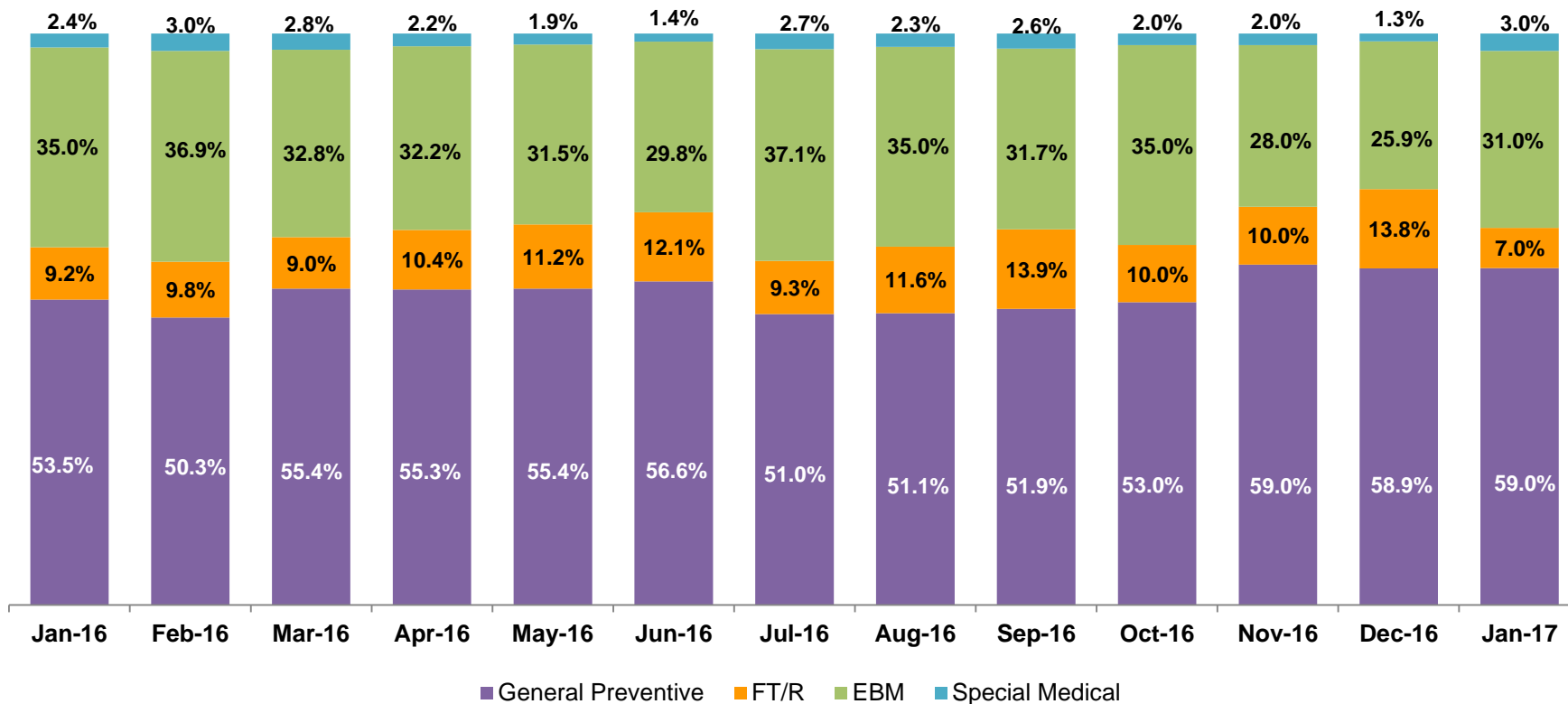
January 2014 – January 2017



* New preventive cases do not include cases transferred from one preventive program to another. See Page 33 of the Appendix for supporting data.

New Child Welfare Preventive Cases by Program Type *

January 2016 – January 2017

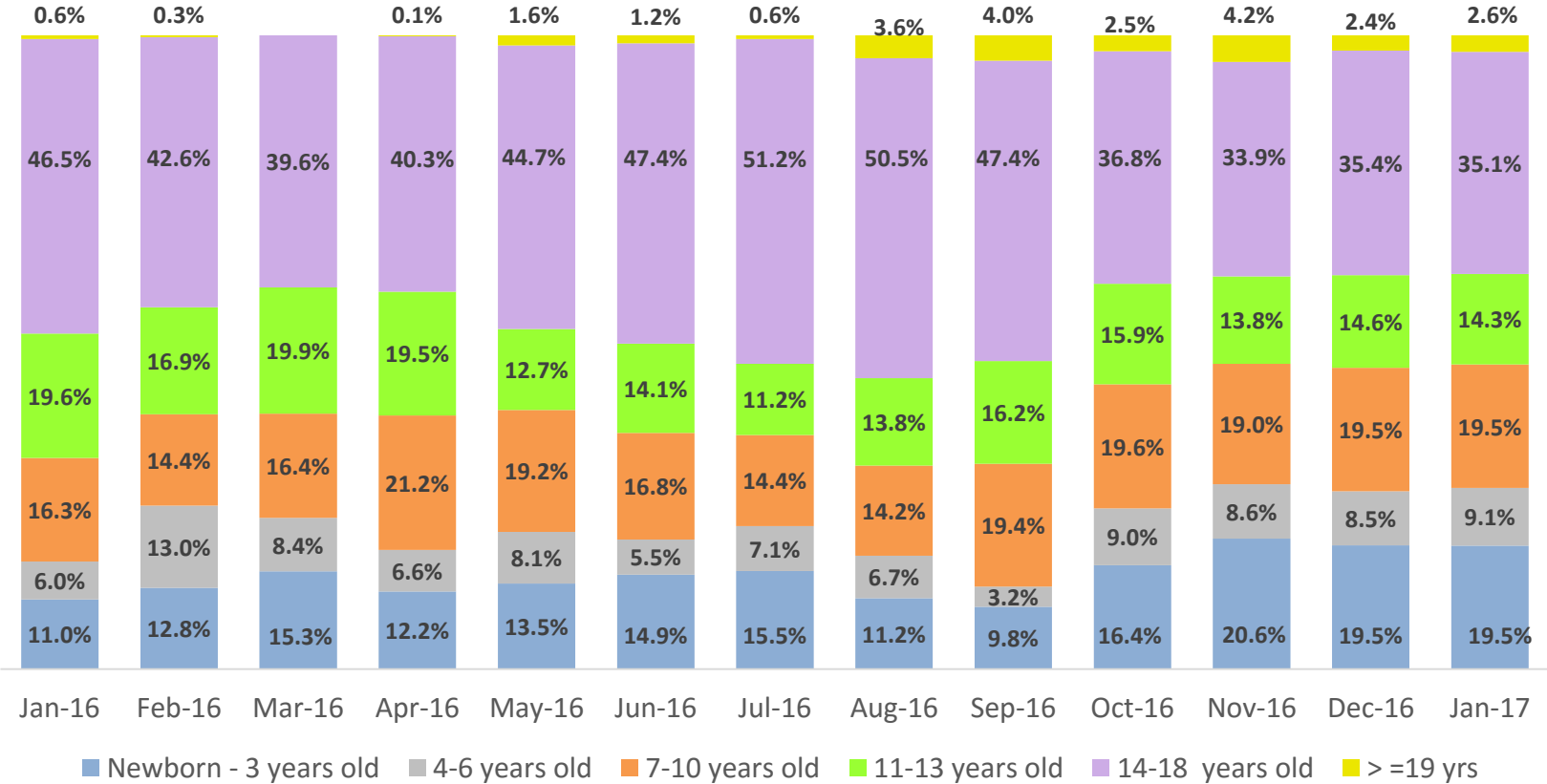


	Jan 2016	Feb 2016	Mar 2016	Apr 2016	May 2016	June 2016	July 2016	Aug 2016	Sep 2016	Oct 2016	Nov 2016	Dec 2016	Jan 2017
Number of New Preventive Cases	797	900	1029	836	890	996	842	897	821	776	728	816	548

* New preventive cases exclude cases transferred from one preventive program to another.

Average Pre-Placement Residential Monthly Population

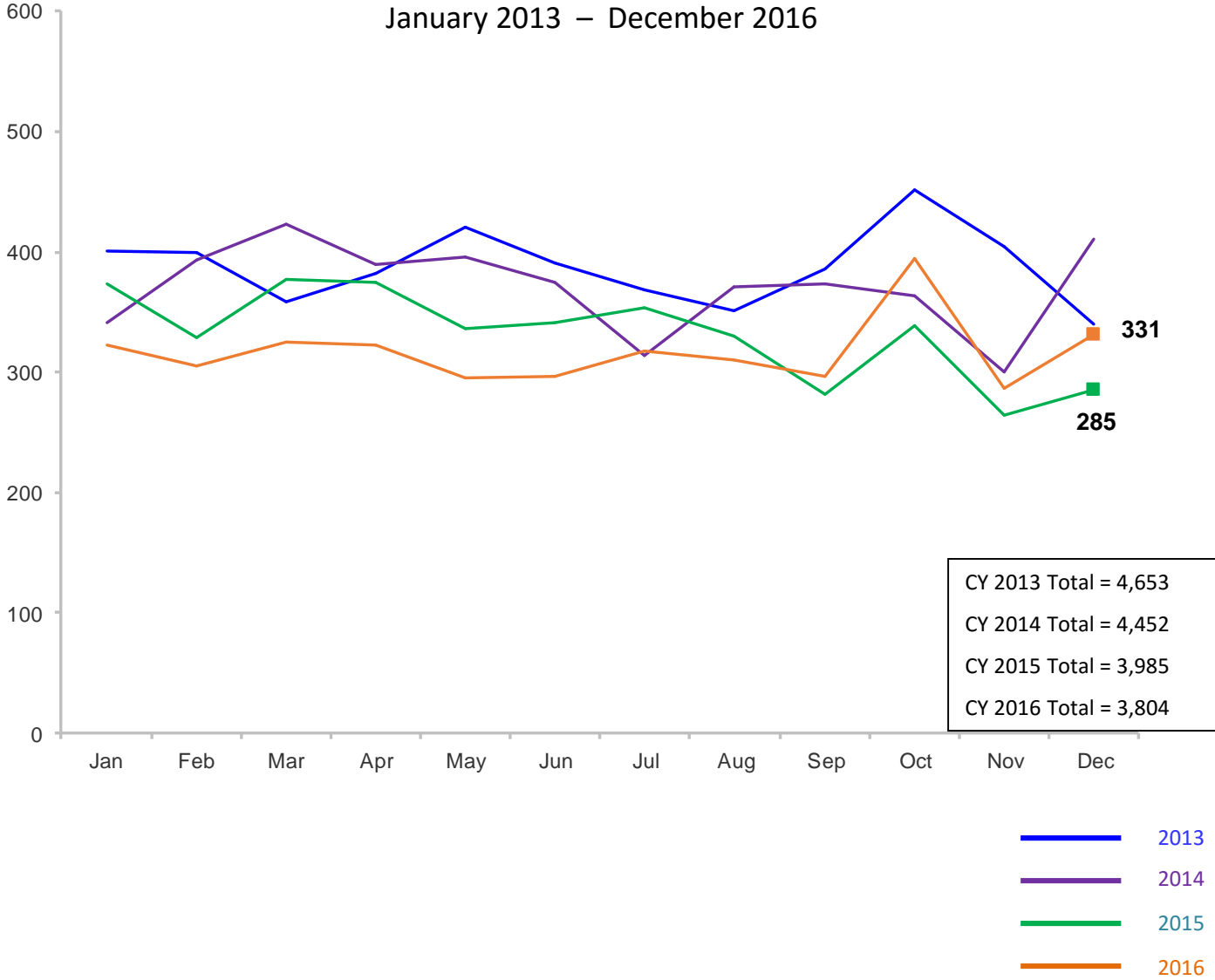
January 2016 – January 2017



	Jan 2016	Feb 2016	Mar 2016	Apr 2016	May 2016	Jun 2016	Jul 2016	Aug 2016	Sep 2016	Oct 2016	Nov 2016	Dec 2016	Jan 2017
Average Number of Children	46	45	49	53	34	40	50	56	54	71	62	82	77

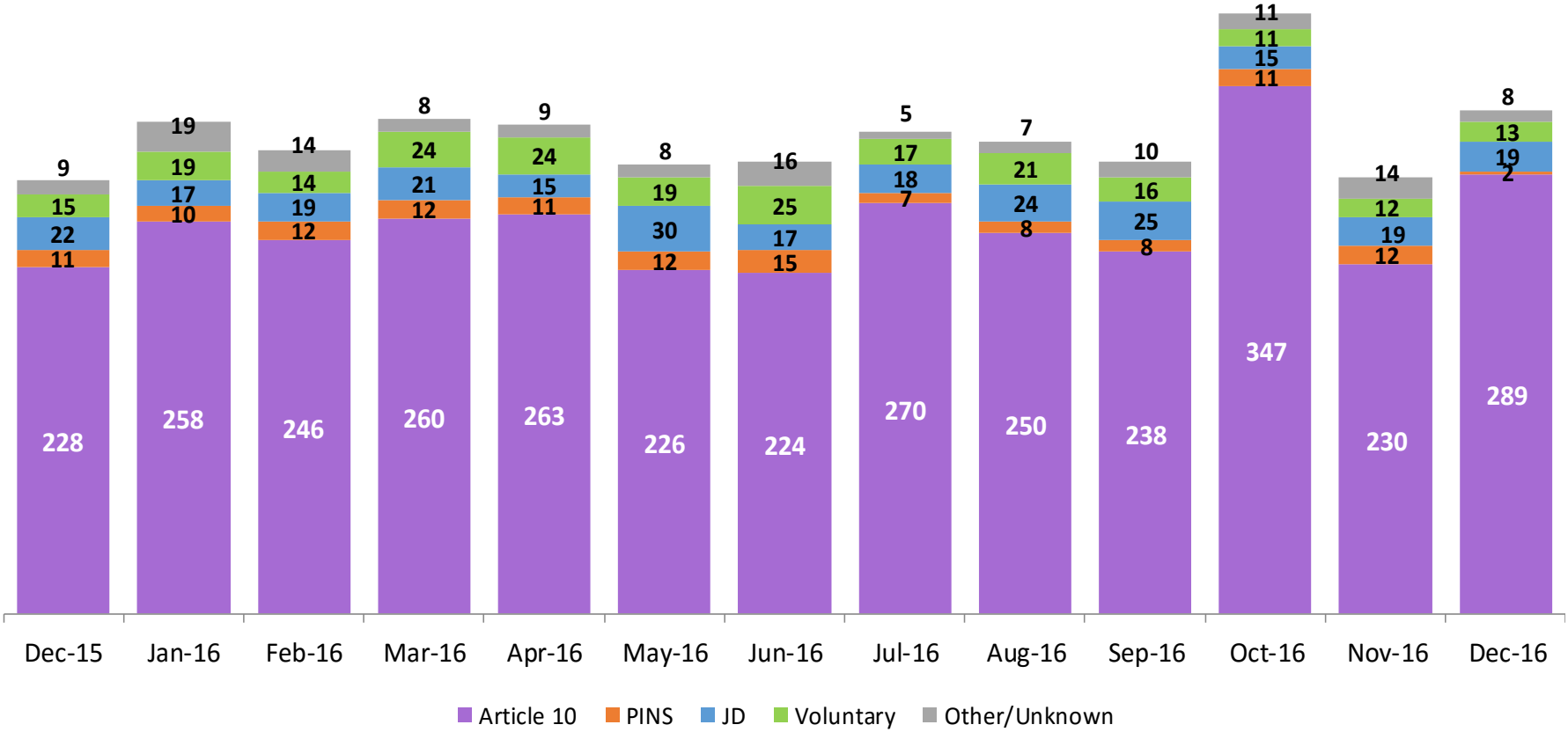
Total Monthly Placements of Children in Foster Care

January 2013 – December 2016



Reason for Initial Placement of Children into Foster Care

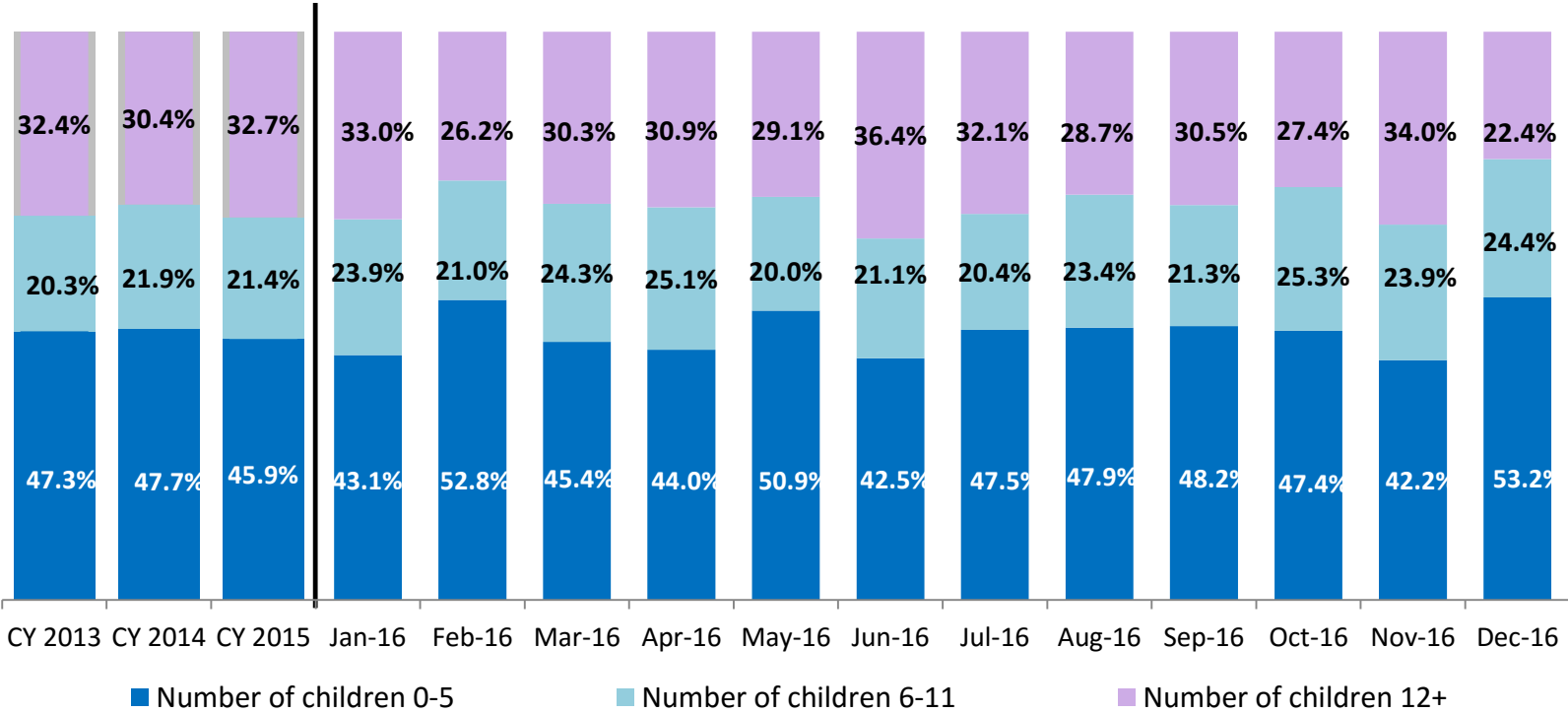
December 2015 – December 2016



	Dec 2015	Jan 2016	Feb 2016	Mar 2016	Apr 2016	May 2016	Jun 2016	Jul 2016	Aug 2016	Sep 2016	Oct 2016	Nov 2016	Dec 2016
Number of Placements of Children	285	323	305	325	322	295	297	317	310	297	395	287	331

Placements of Children* by Age

CY 2013 - December 2016

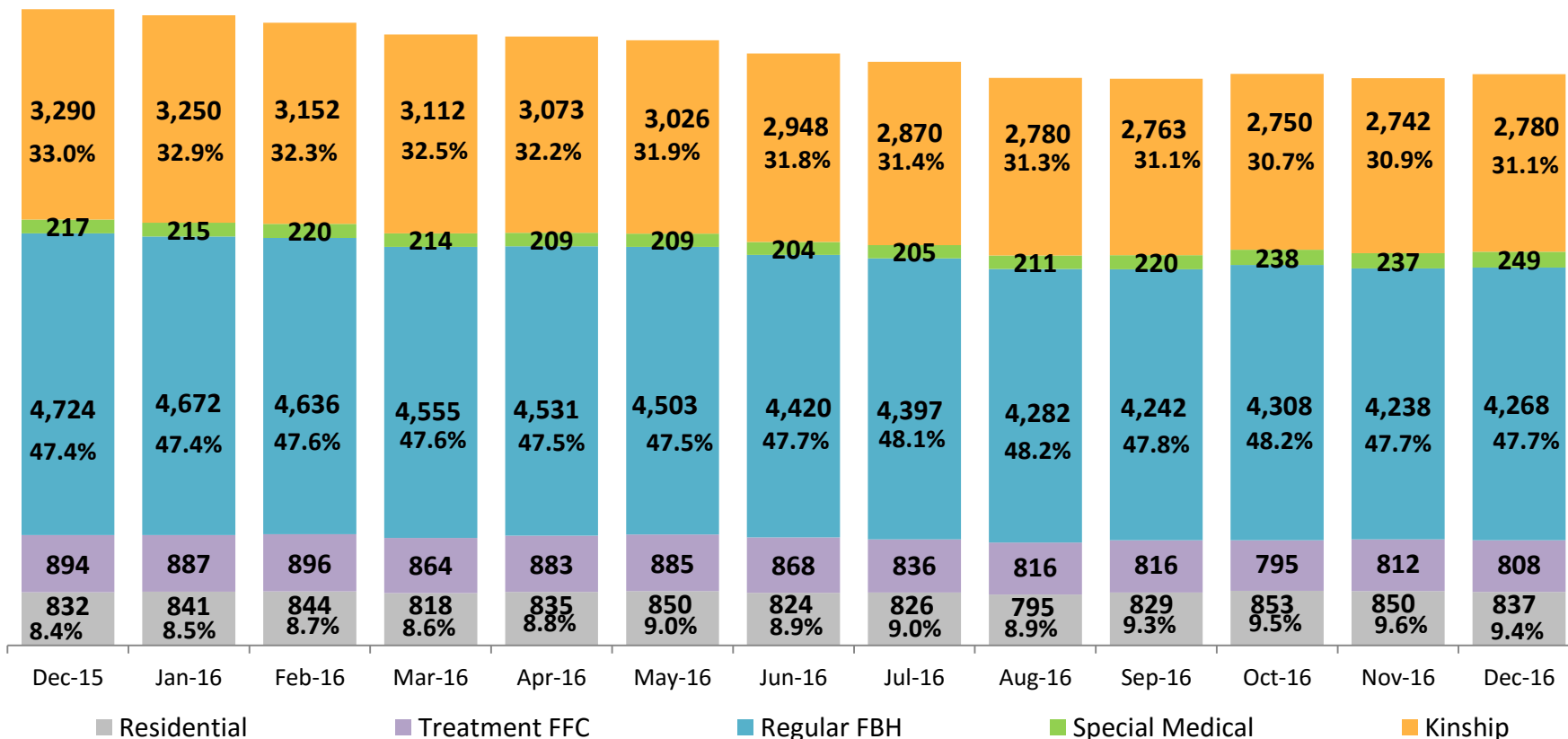


	CY 2013	CY 2014	CY 2015	Jan 2016	Feb 2016	Mar 2016	Apr 2016	May 2016	Jun 2016	Jul 2016	Aug 2016	Sep 2016	Oct 2016	Nov 2016	Dec 2016
Placements of Children	4,283	4,160	3,760	306	286	304	307	265	280	299	286	272	380	268	312

*Excludes JD placements.

Children in Foster Care *

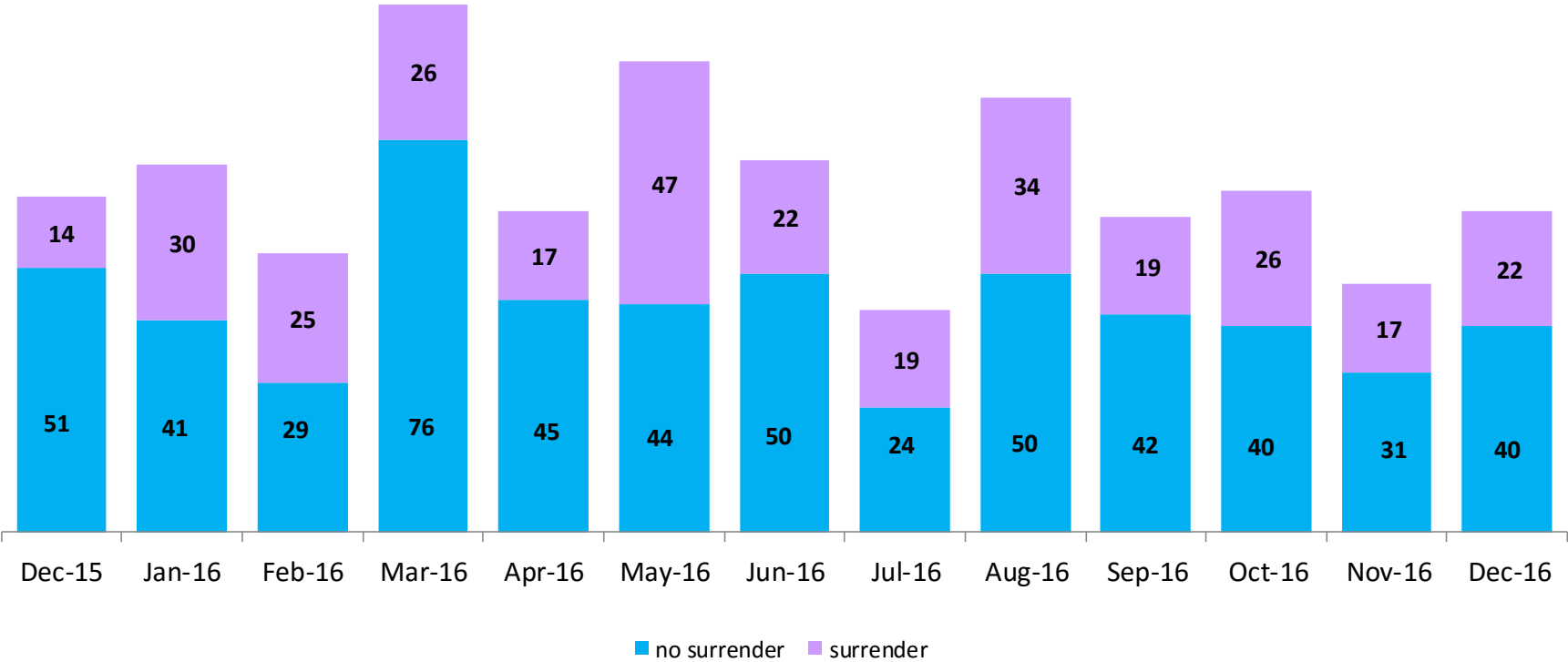
December 2015 – December 2016 (end of month)



	Dec 2015	Jan 2016	Feb 2016	Mar 2016	Apr 2016	May 2016	Jun 2016	Jul 2016	Aug 2016	Sep 2016	Oct 2016	Nov 2016	Dec 2016
Number in Foster Care	9,957	9,865	9,748	9,563	9,531	9,473	9,264	9,134	8,884	8,870	8,944	8,879	8,942

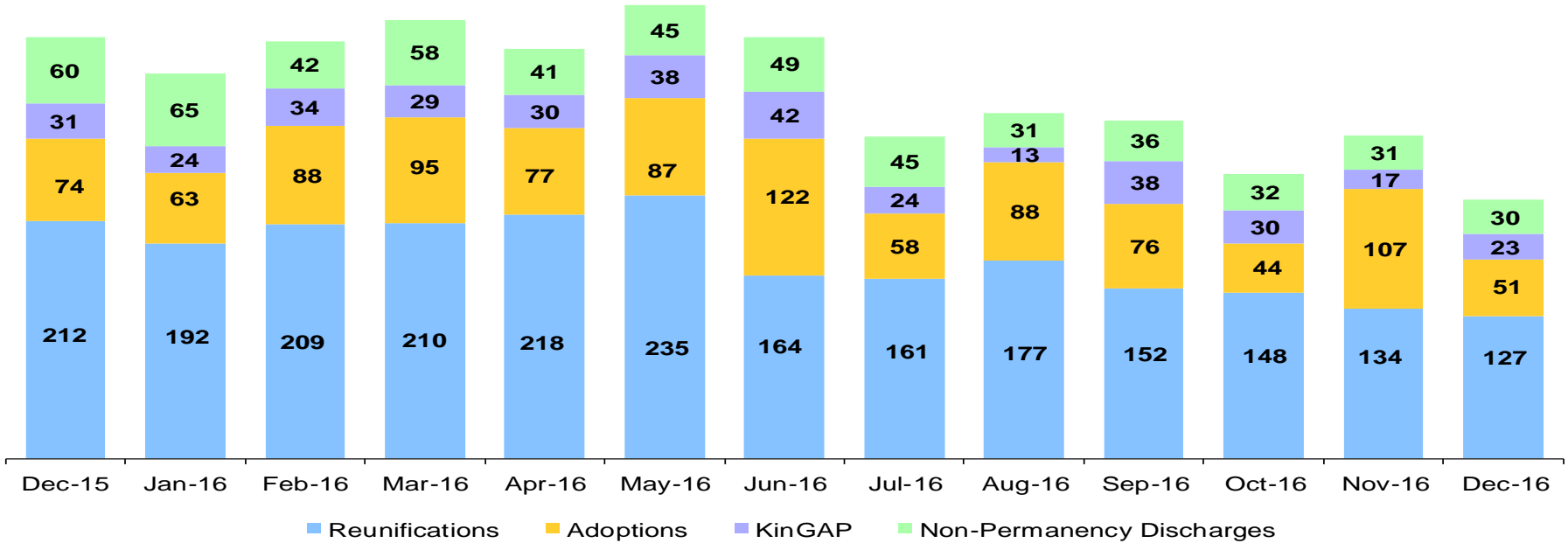
*Excludes JD placements and includes children in 24 hour care and approximately 200 young children who are living in foster homes or residential care facilities with their mothers who are in foster care (8D children).

Children Freed for Adoption, Surrender by at Least One Parent December 2015 – December 2016



	Dec 2015	Jan 2016	Feb 2016	Mar 2016	Apr 2016	May 2016	Jun 2016	Jul 2016	Aug 2016	Sep 2016	Oct 2016	Nov 2016	Dec 2016
Number Freed for Adoption	63	71	54	102	62	91	72	43	81	61	66	48	62

Permanency and Non-Permanency* Discharges from Foster Care**
 December 2015 – December 2016



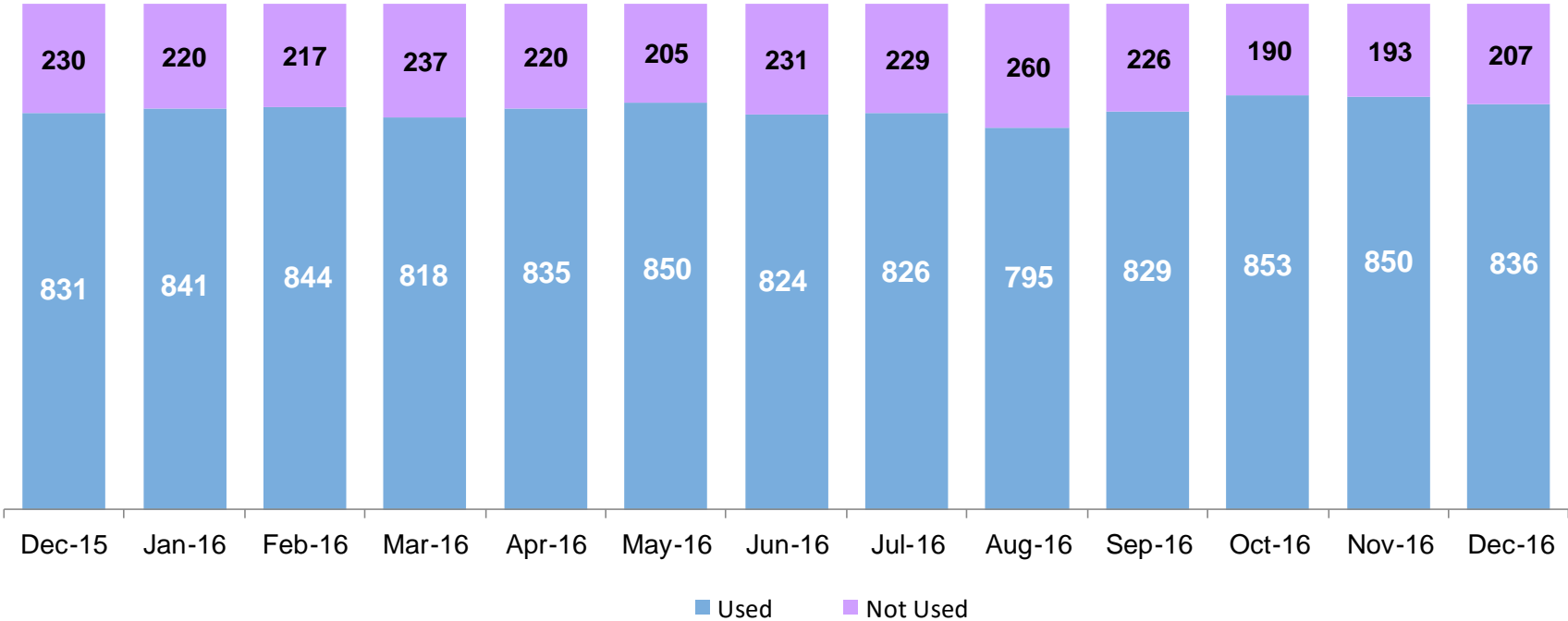
	Dec 2015	Jan 2016	Feb 2016	Mar 2016	Apr 2016	May 2016	Jun 2016	Jul 2016	Aug 2016	Sep 2016	Oct 2016	Nov 2016	Dec 2016
Number of Discharges	377	344	373	392	366	405	377	288	309	302	254	289	231

*Non-permanency discharges include AWOL, APPLA , other discharge destinations such as psychiatric institutions and correctional facilities and discharges with unspecified destinations.

**Excludes discharges of youth who entered care as a JD.

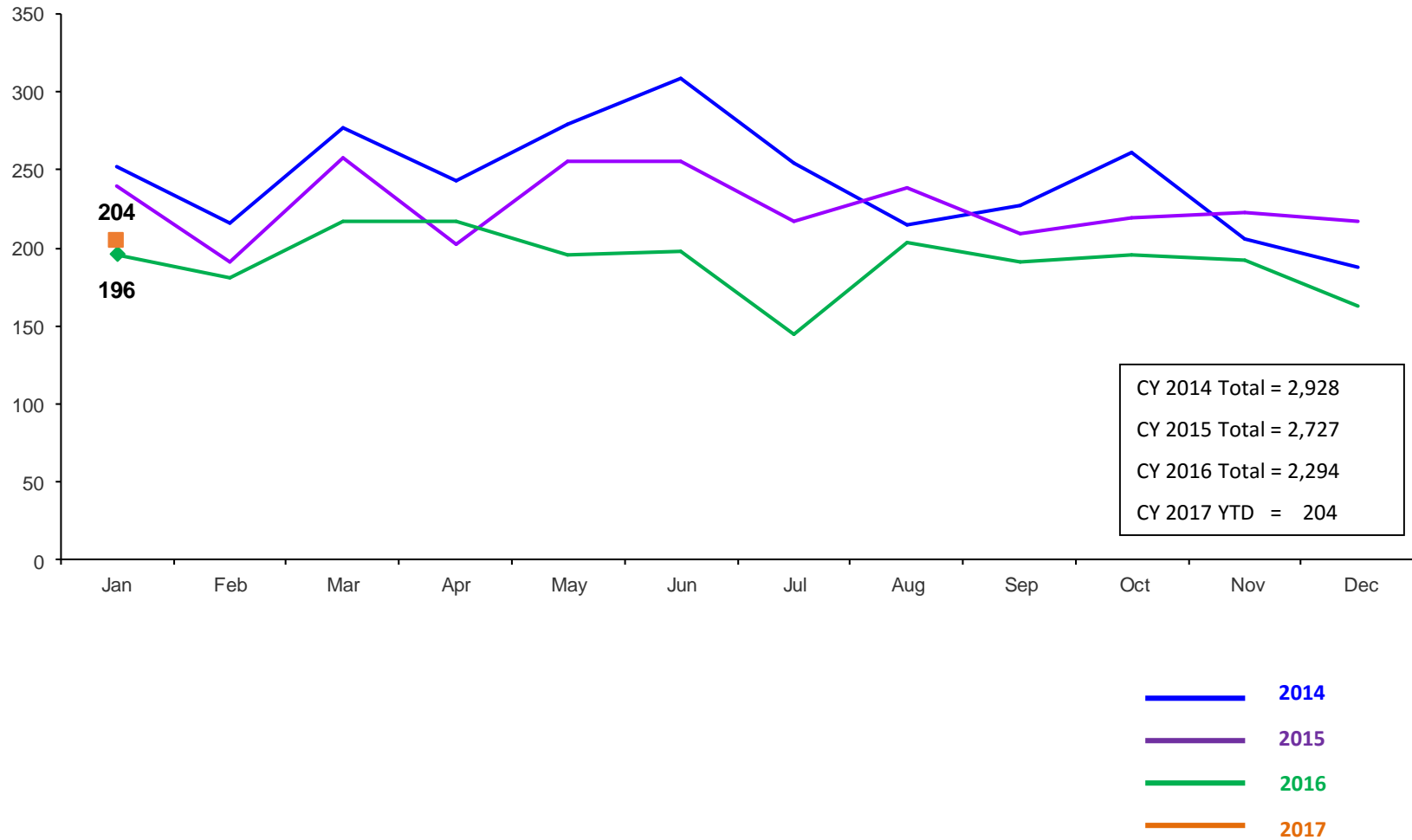
Residential Care Capacity and Utilization

December 2015 – December 2016



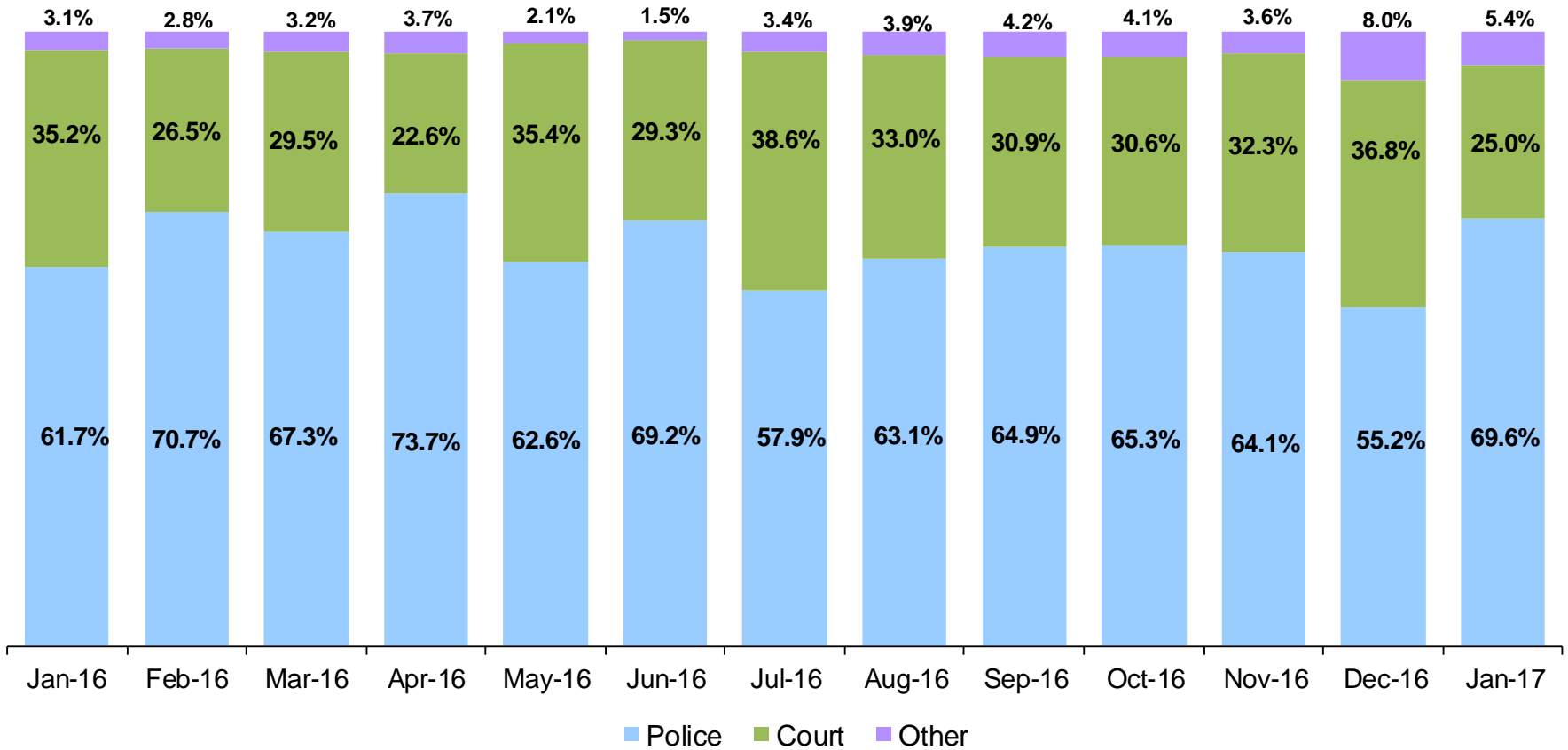
	Dec 2015	Jan 2016	Feb 2016	Mar 2016	Apr 2016	May 2016	Jun 2016	Jul 2016	Aug 2016	Sep 2016	Oct 2016	Nov 2016	Dec 2016
Capacity	1,061	1,061	1,061	1,055	1,055	1,055	1,055	1,055	1,055	1,055	1,043	1,043	1,043

Total Monthly Admissions to Detention January 2014 – January 2017 (Monthly Total)



Admit Authority on Admissions

January 2016 – January 2017 (Monthly Total)



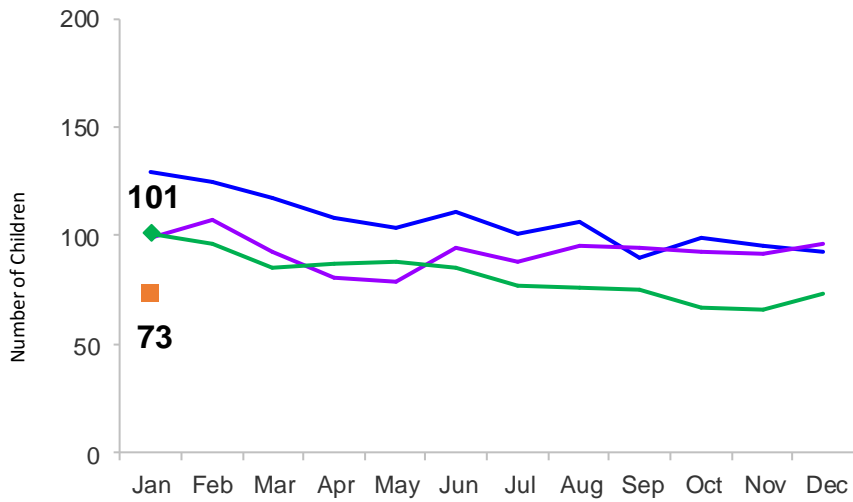
	Jan 2016	Feb 2016	Mar 2016	Apr 2016	May 2016	Jun 2016	Jul 2016	Aug 2016	Sep 2016	Oct 2016	Nov 2016	Dec 2016	Jan 2017
Number of Admissions	196	181	217	217	195	198	145	203	191	196	192	163	204

Note: Other Admit Authority includes the Sheriff Department, Department of Corrections and ACS.

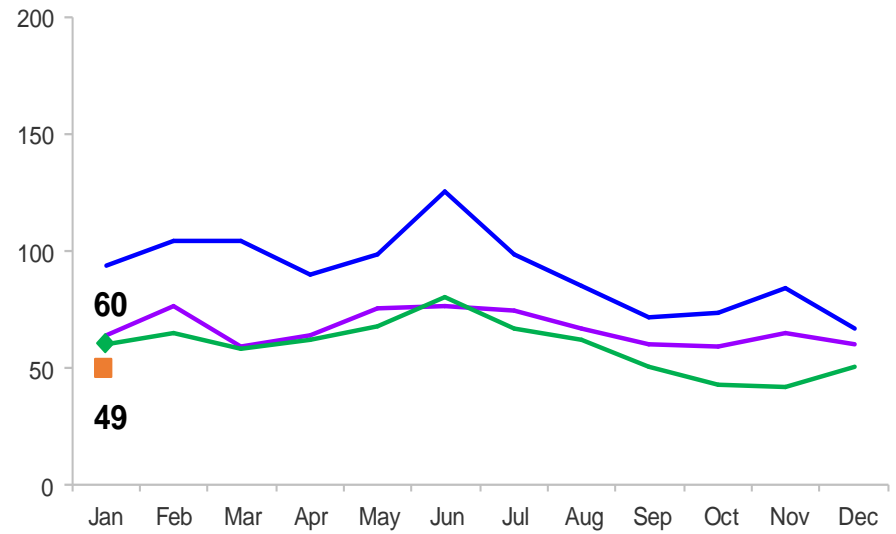
Monthly Average Daily Population

January 2014 – January 2017

Secure Detention



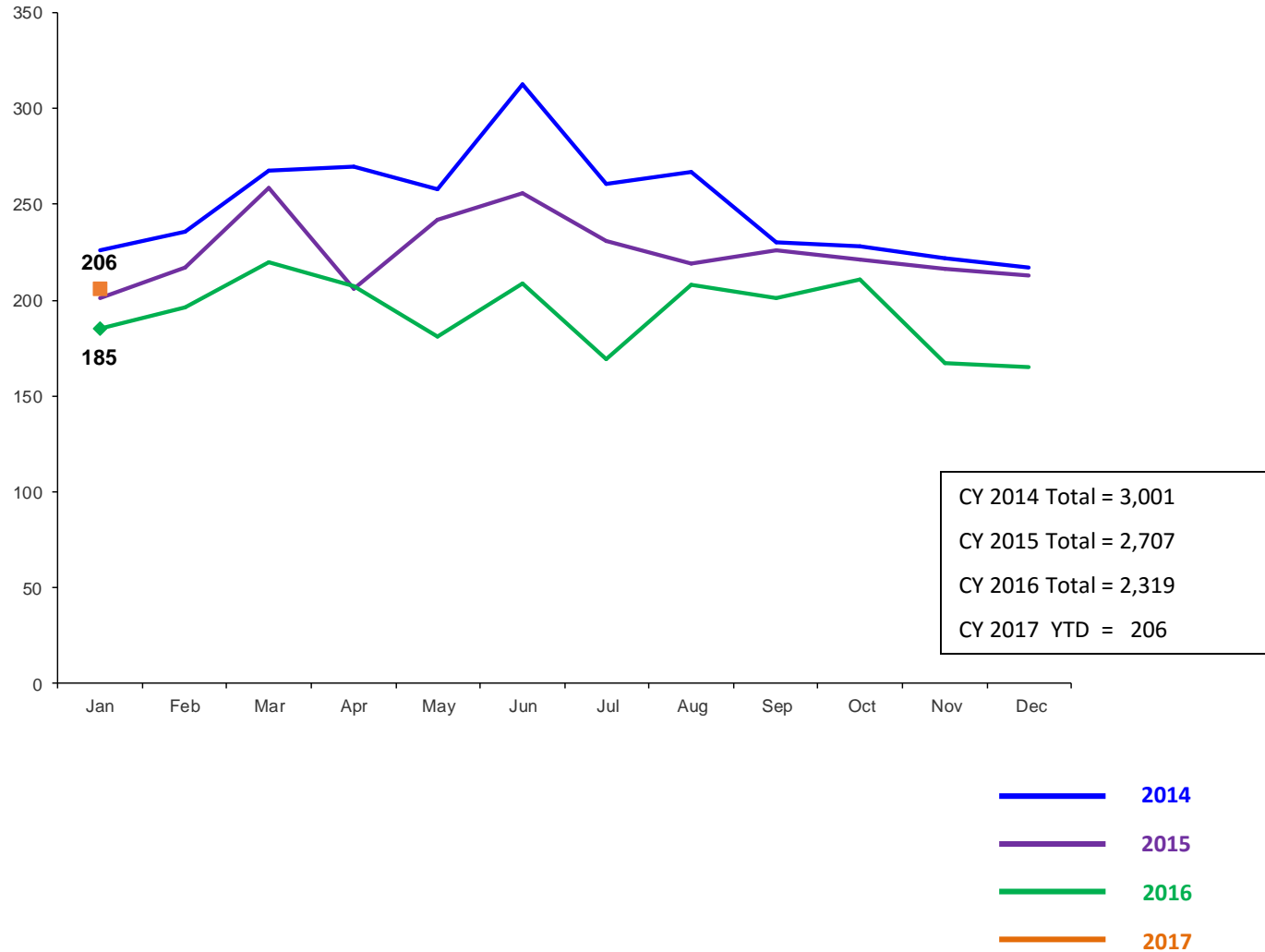
Non-Secure Detention



- 2014
- 2015
- 2016
- 2017

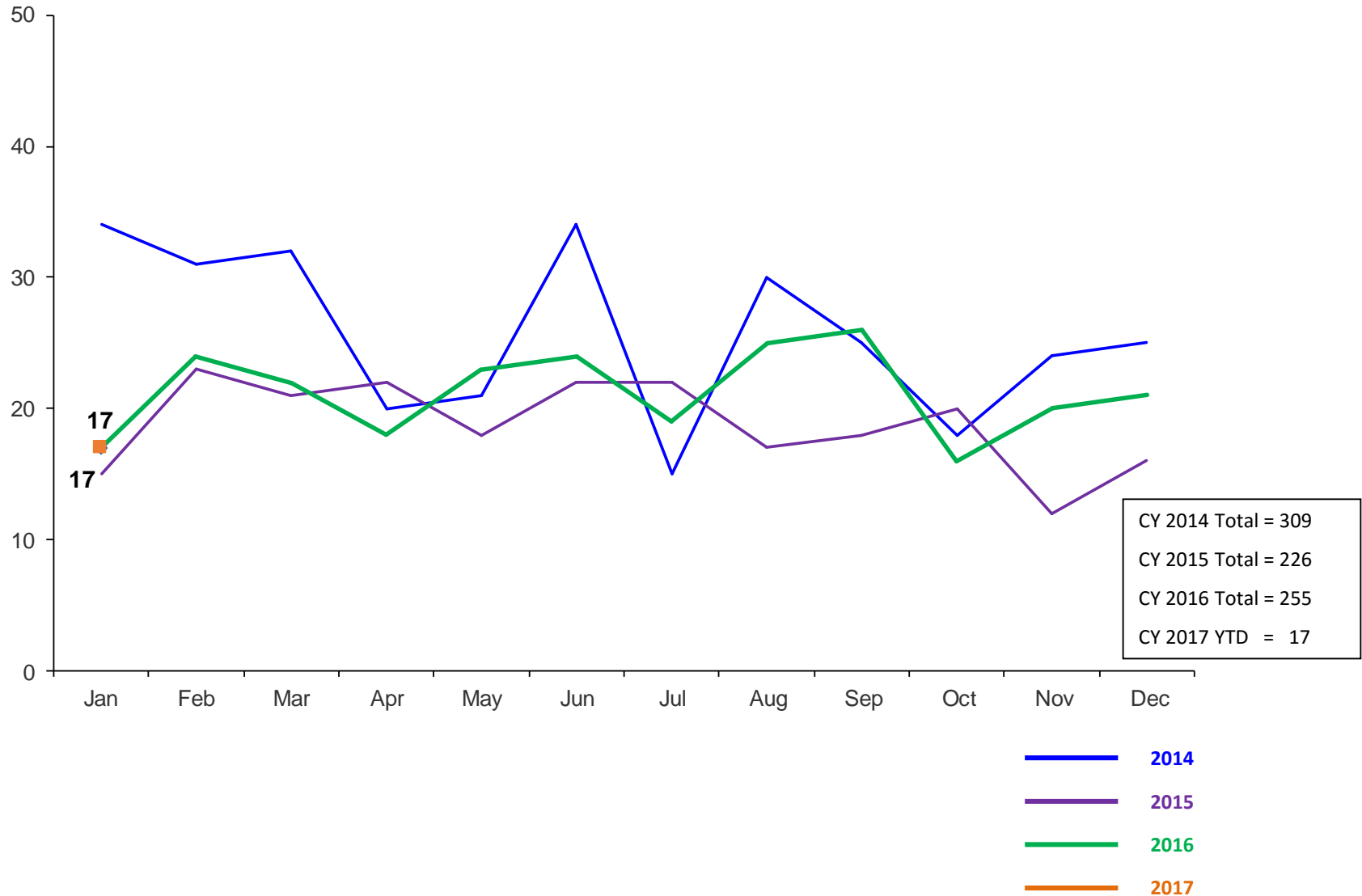
Total Monthly Releases from Detention

January 2014 – January 2017 (Monthly Total)



Close to Home Intakes*

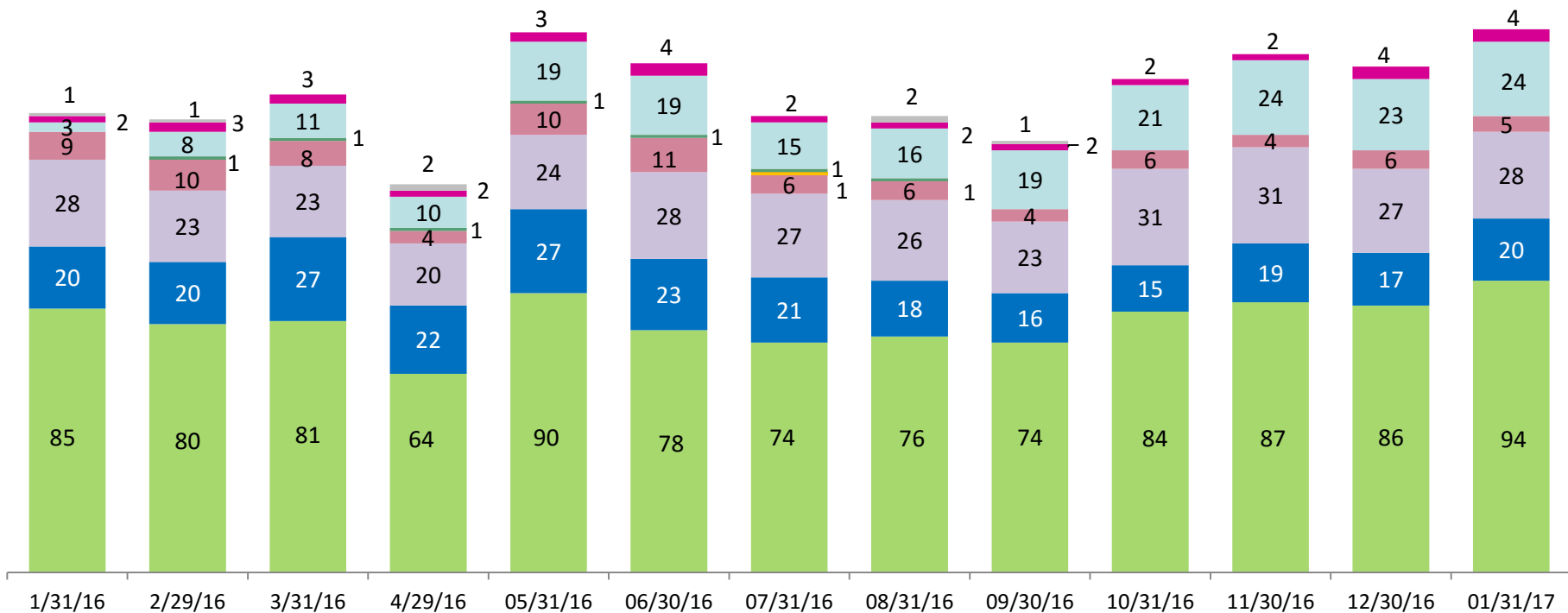
January 2014 – January 2017 (Monthly Total)



*Beginning in December 2015 Close to Home Intakes include LSP as well as NSP.

CTH Placement, in 24-hour Care

January 2016– January 2017 (end of month)



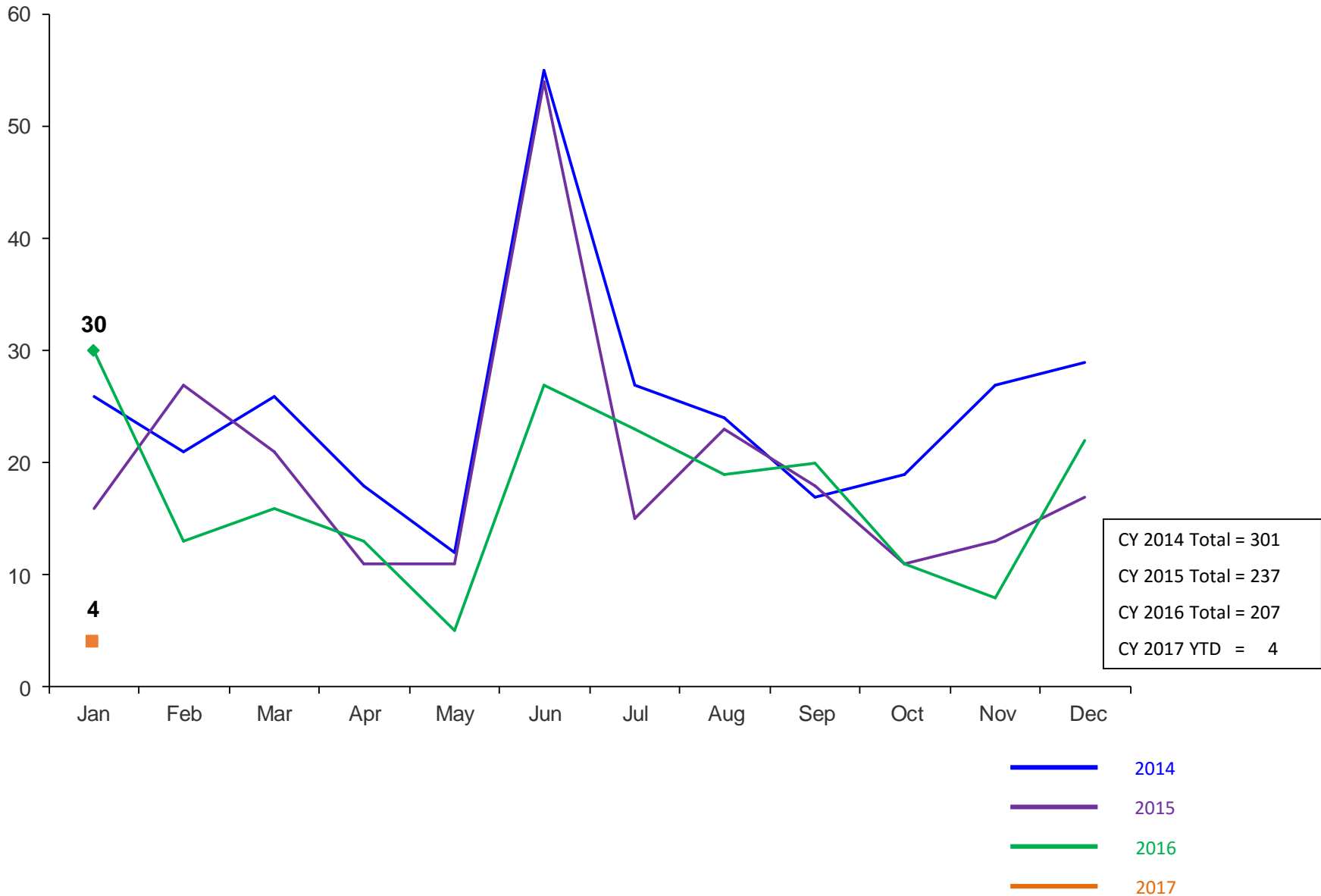
- NSP General Male
- NSP General Female
- NSP Specialized Male
- NSP Specialized Female
- NSP TFCO
- NSP Other*
- LSP Male
- LSP Female

Number in Placement													
	1/31/16	2/29/16	3/31/16	4/29/16	5/31/16	6/30/16	7/31/16	8/31/16	9/30/16	10/31/16	11/30/16	12/30/16	1/31/17
NSP	142	134	140	111	152	141	130	127	117	136	141	136	147
LSP	6	12	14	14	22	23	17	20	22	23	26	27	28

*NSP Other includes youth in child welfare and mother/child placements.

Releases from Close to Home Placement to Aftercare

January 2014 – January 2017 (Monthly Total)



Appendix

Figure 1: SCR Intakes by Borough, NOV 15 - JAN 16 and NOV 16 - JAN 17

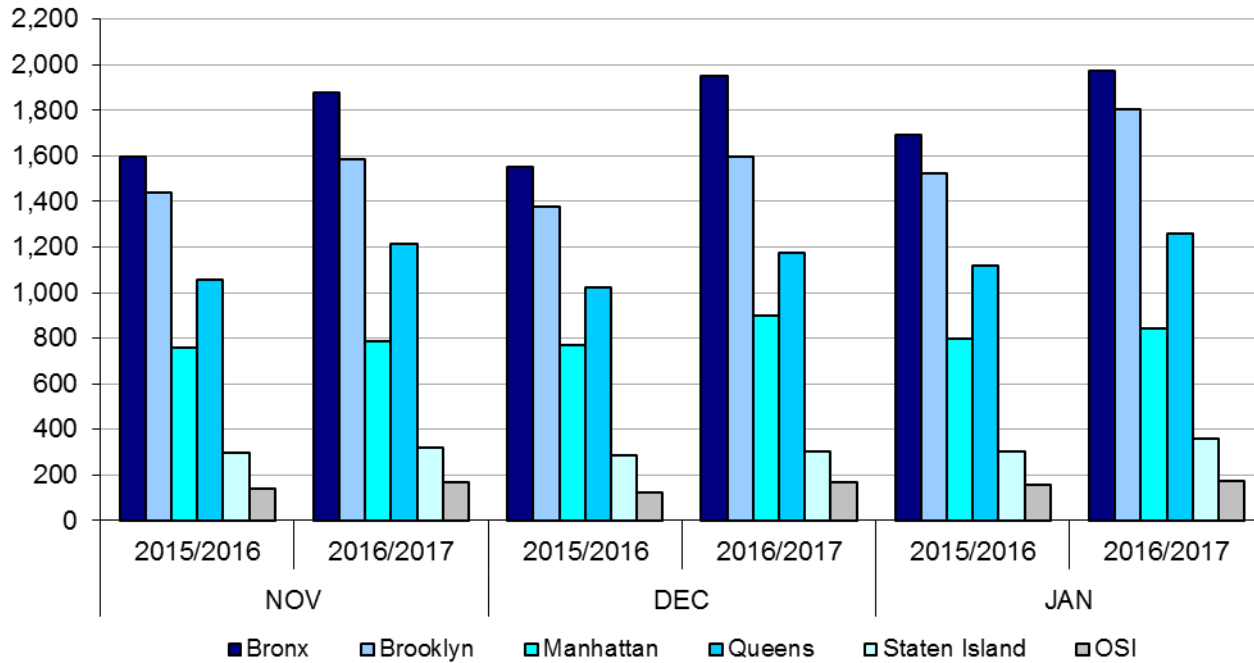


Table 1 - SCR Intake Changes by Borough, NOV 15 - JAN 16 and NOV 16 - JAN 17

Month	Year	Bronx	Brooklyn	Manhattan	Queens	Staten Island	OSI	Other	Total
NOV	2015/2016	1,596	1,440	756	1,057	297	137	147	5,430
	2016/2017	1,879	1,585	784	1,213	317	167	126	6,071
	% Change	17.7%	10.1%	3.7%	14.8%	6.7%	21.9%	-14.3%	11.8%
DEC	2015/2016	1,552	1,377	772	1,024	285	124	143	5,277
	2016/2017	1,951	1,597	899	1,172	302	165	149	6,235
	% Change	25.7%	16.0%	16.5%	14.5%	6.0%	33.1%	4.2%	18.2%
JAN	2015/2016	1,685	1,592	737	1,047	292	140	127	5,620
	2016/2017	1,971	1,802	844	1,259	357	172	184	6,589
	% Change	17.0%	13.2%	14.5%	20.2%	22.3%	22.9%	44.9%	17.2%
Total	2015/2016	4,833	4,409	2,265	3,128	874	401	417	16,327
	2016/2017	5,801	4,984	2,527	3,644	976	504	459	18,895
	% Change	20.0%	13.0%	11.6%	16.5%	11.7%	25.7%	10.1%	15.7%

Figure 2: Citywide SCR Intakes by Reporter Group, NOV 15 - JAN 16 and NOV 16 - JAN 17

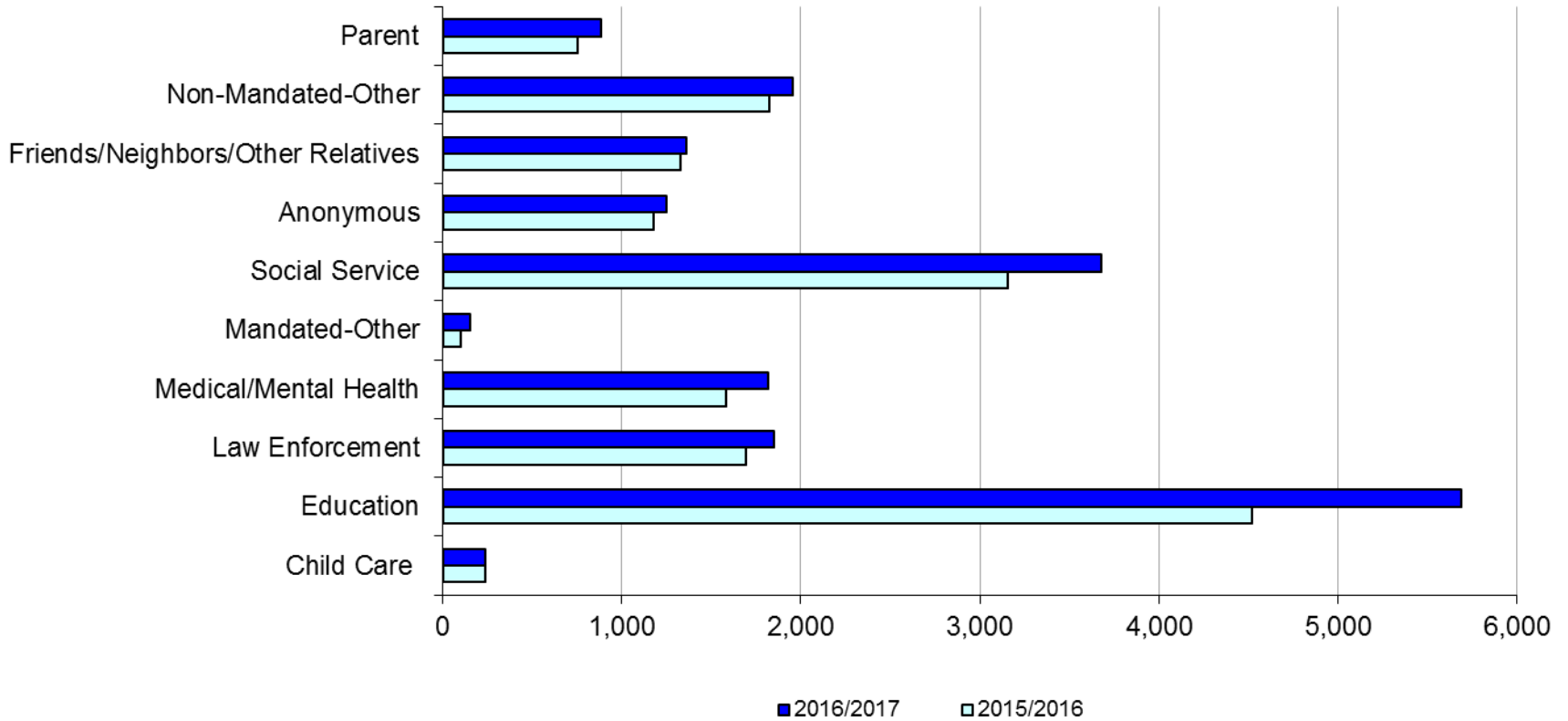
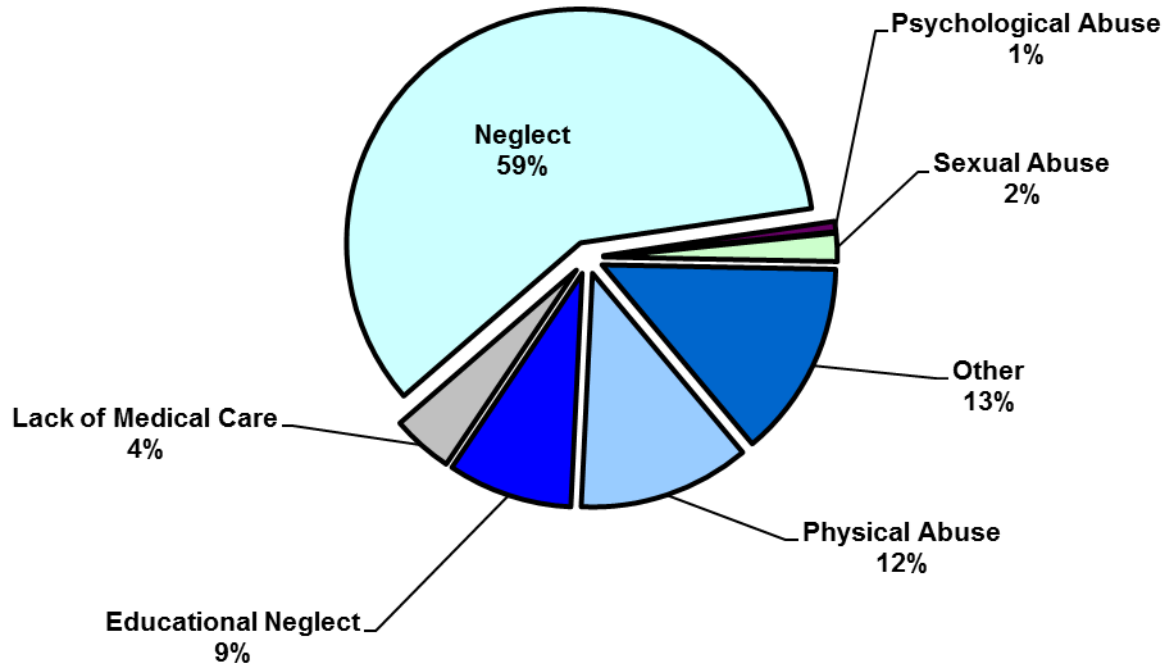


Table 2 - SCR Intakes by Reporter Group, NOV 15 - JAN 16 and NOV 16 - JAN 17

Year	Child Care/ Substitute Care Personnel	Educational Personnel	Law Enforcement	Medical/ Mental Health Personnel	Mandated- Other	Social Service Personnel	Anonymous	Friends/ Neighbors/ Other Relatives	Non- Mandated- Other	Parent	Foster Parent	Total
Bronx												
2015/2016	62	1,371	419	446	28	971	349	403	584	200	0	4,833
2016/2017	84	1,891	482	542	36	1,172	354	420	591	233	2	5,807
% Change	35.5%	37.9%	15.0%	21.5%	28.6%	20.7%	1.4%	4.2%	1.2%	16.5%	--	20.2%
Brooklyn												
2015/2016	65	1,275	518	400	23	789	345	352	458	182	2	4,409
2016/2017	51	1,507	579	453	38	881	355	375	516	232	0	4,987
% Change	-21.5%	18.2%	11.8%	13.3%	65.2%	11.7%	2.9%	6.5%	12.7%	27.5%	-100.0%	13.1%
Manhattan												
2015/2016	32	515	290	247	16	479	147	175	255	107	0	2,263
2016/2017	29	608	270	289	30	525	207	191	277	101	0	2,527
% Change	-9.4%	18.1%	-6.9%	17.0%	87.5%	9.6%	40.8%	9.1%	8.6%	-5.6%	--	11.7%
Queens												
2015/2016	38	1,004	286	308	18	602	190	256	310	114	0	3,126
2016/2017	31	1,261	320	338	28	708	206	239	368	146	1	3,646
% Change	-18.4%	25.6%	11.9%	9.7%	55.6%	17.6%	8.4%	-6.6%	18.7%	28.1%	--	16.6%
Staten Island												
2015/2016	15	278	76	98	7	110	89	93	79	29	0	874
2016/2017	12	326	85	97	7	159	79	84	77	50	0	976
% Change	-20.0%	17.3%	11.8%	-1.0%	0.0%	44.5%	-11.2%	-9.7%	-2.5%	72.4%	--	11.7%
OSI												
2015/2016	25	37	22	30	7	70	35	23	86	65	1	401
2016/2017	25	48	28	37	13	98	40	29	96	89	1	504
% Change	0.0%	29.7%	27.3%	23.3%	85.7%	40.0%	14.3%	26.1%	11.6%	36.9%	0.0%	25.7%
Other												
2015/2016	3	40	82	51	2	135	26	25	52	57	0	473
2016/2017	4	50	89	65	3	133	12	25	31	34	1	447
% Change	33.3%	25.0%	8.5%	27.5%	50.0%	-1.5%	-53.8%	0.0%	-40.4%	-40.4%	--	-5.5%
Citywide												
2015/2016	240	4,520	1,693	1,580	101	3,156	1,181	1,327	1,824	754	3	16,379
2016/2017	236	5,691	1,853	1,821	155	3,676	1,253	1,363	1,956	885	5	18,894
% Change	-1.7%	25.9%	9.5%	15.3%	53.5%	16.5%	6.1%	2.7%	7.2%	17.4%	66.7%	15.4%

Figure 3: SCR Allegations, NOV 16 – JAN 17



Total Allegations = 47,308

Allegations are grouped as follows: Physical Abuse - burn, fatality, fracture, choking, twisting, shaking, excessive corporal punishment, internal injuries, lacerations, bruises, welts, poisoning, noxious substances; Educational Neglect – educational neglect; Lack of Medical Care – lack of medical care; Neglect - inadequate guardianship, inadequate food, clothing, shelter, lack of supervision, malnutrition, failure to thrive, swelling, dislocations, sprains; Psychological Abuse - isolation, emotional neglect; Sexual Abuse – sexual abuse; and Other -parental drug use, child drug use, abandonment, inappropriate custodial conduct.

Table 3 - SCR Allegations, NOV 15 - JAN 16 and NOV 16 - JAN 17

Year	Physical Abuse	Educational Neglect	Lack of Medical Care	Neglect	Psychological Abuse	Sexual Abuse	Other	Total
Bronx								
2015/2016	1,525	1,230	509	7,714	65	224	1,747	13,014
2016/2017	1,592	1,623	736	8,731	107	271	1,937	14,997
% Change	4.4%	32.0%	44.6%	13.2%	64.6%	21.0%	10.9%	15.2%
Brooklyn								
2015/2016	1,373	1,093	440	6,912	55	229	1,451	11,553
2016/2017	1,514	1,131	478	7,264	75	236	1,623	12,321
% Change	10.3%	3.5%	8.6%	5.1%	36.4%	3.1%	11.9%	6.6%
Manhattan								
2015/2016	553	356	217	2933	25	102	665	4,851
2016/2017	640	429	241	3363	42	128	779	5,622
% Change	15.7%	20.5%	11.1%	14.7%	68.0%	25.5%	17.1%	15.9%
Queens								
2015/2016	992	457	279	4,222	54	159	1,053	7,216
2016/2017	1,137	579	351	4,981	84	154	1,170	8,456
% Change	14.6%	26.7%	25.8%	18.0%	55.6%	-3.1%	11.1%	17.2%
Staten Island								
2015/2016	285	169	89	1,411	11	40	402	2,407
2016/2017	305	202	88	1,659	19	40	519	2,832
% Change	7.0%	19.5%	-1.1%	17.6%	72.7%	0.0%	29.1%	17.7%
OSI								
2015/2016	242	41	60	1,072	6	67	165	1,653
2016/2017	318	63	67	1,311	6	71	213	2,049
% Change	31.4%	53.7%	11.7%	22.3%	0.0%	6.0%	29.1%	24.0%
Other								
2015/2016	128	33	42	673	5	30	227	1,138
2016/2017	115	59	39	606	7	20	185	1,031
% Change	-10.2%	78.8%	-7.1%	-10.0%	40.0%	-33.3%	-18.5%	-9.4%
Citywide								
2015/2016	5,098	3,379	1,636	24,937	221	851	5,710	41,832
2016/2017	5,621	4,086	2,000	27,915	340	920	6,426	47,308
% Change	10.3%	20.9%	22.2%	11.9%	53.8%	8.1%	12.5%	13.1%

**Table 5 - Referrals to Child Welfare Preventive Services by Source
January 2014 to January 2017**

Month	Total Referrals	Division of Child Protection	Foster Care Agencies	PPRS Transfer	School	Self	Other Sources*
2014							
Jan-14	1,537	70.0%	1.2%	6.6%	2.3%	5.8%	14.2%
Feb-14	1,334	69.7%	0.8%	8.4%	1.7%	5.5%	13.9%
Mar-14	1,612	70.0%	1.4%	8.6%	1.6%	5.3%	13.1%
Apr-14	1,525	70.2%	0.9%	7.6%	2.1%	3.7%	15.4%
May-14	1,580	74.4%	0.7%	8.3%	1.4%	5.2%	10.0%
Jun-14	1,550	78.6%	1.2%	6.3%	1.2%	3.2%	9.4%
Jul-14	1,659	79.6%	1.5%	6.7%	0.4%	4.2%	7.6%
Aug-14	1,395	72.2%	1.6%	10.8%	0.3%	4.9%	10.3%
Sep-14	1,597	49.4%	1.5%	7.6%	0.3%	4.5%	36.8%
Oct-14	1,634	68.2%	1.9%	10.0%	1.2%	4.6%	14.1%
Nov-14	1,311	66.4%	0.9%	14.3%	2.4%	3.9%	12.1%
Dec-14	1,785	71.1%	1.4%	8.8%	2.9%	4.8%	11.0%
CY 2014	18,519	70.1%	1.3%	8.6%	1.5%	4.6%	14.0%
2015							
Jan-15	1,430	74.4%	1.6%	8.7%	1.8%	3.8%	9.7%
Feb-15	1,538	76.5%	0.8%	8.1%	1.8%	4.7%	8.2%
Mar-15	1,798	74.6%	0.9%	7.3%	1.6%	4.8%	10.8%
Apr-15	1,719	78.2%	1.3%	7.2%	0.6%	3.5%	9.1%
May-15	1,561	77.2%	1.0%	5.1%	1.5%	4.5%	10.8%
Jun-15	1,716	77.4%	1.1%	7.7%	1.2%	3.5%	9.1%
Jul-15	1,511	79.6%	0.9%	7.2%	0.3%	3.8%	8.2%
Aug-15	1,418	79.3%	2.2%	7.8%	0.2%	3.1%	7.5%
Sep-15	1,209	72.1%	2.8%	10.4%	0.5%	5.5%	8.6%
Oct-15	1,338	70.4%	1.9%	8.3%	2.1%	5.8%	11.6%
Nov-15	1,220	68.2%	1.8%	9.6%	1.4%	6.2%	12.8%
Dec-15	1,526	73.5%	1.6%	8.0%	2.0%	5.0%	9.9%
2016							
Jan-16	1,370	73.6%	1.6%	8.2%	0.7%	5.4%	10.6%
Feb-16	1,436	75.8%	2.2%	7.8%	1.0%	3.8%	9.3%
Mar-16	1,557	72.0%	2.1%	8.8%	1.0%	4.6%	11.4%
Apr-16	1,378	76.1%	1.5%	7.4%	1.5%	3.5%	10.0%
May-16	1,386	73.4%	1.4%	8.7%	1.0%	4.7%	10.8%
Jun-16	1,564	77.2%	2.4%	6.2%	1.5%	4.1%	8.6%
Jul-16	1,338	80.3%	1.7%	6.4%	1.0%	4.2%	6.4%
Aug-16	1,385	79.1%	1.8%	7.1%	0.4%	4.0%	7.6%
Sep-16	1,297	77.8%	2.1%	7.5%	0.8%	4.5%	7.4%
Oct-16	1,247	70.1%	2.0%	7.6%	1.5%	5.9%	12.9%
Nov-16	1,229	67.8%	2.0%	7.8%	1.2%	5.5%	15.8%
Dec-16	1,175	76.0%	1.5%	7.1%	1.3%	3.8%	10.3%
2017							
Jan-17	1,038	79.6%	1.3%	6.8%	0.5%	2.5%	9.3%

*Other Community Sources includes the Department of Homeless Services, Family Court, FAP, Hospitals and Medical facilities, the NYC Housing Authority, Probation, and Sponsor Agencies.