

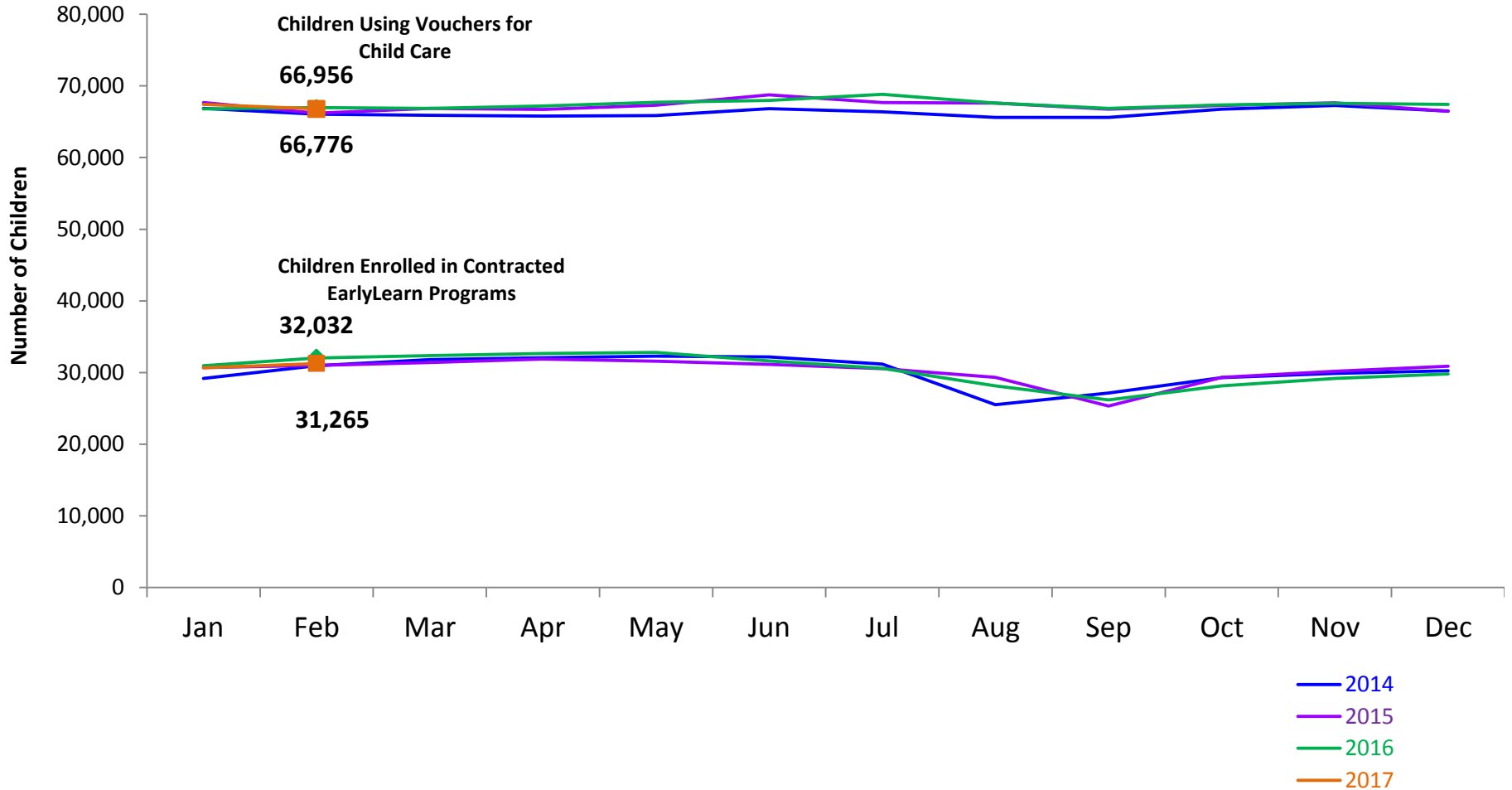


Flash

March 2017

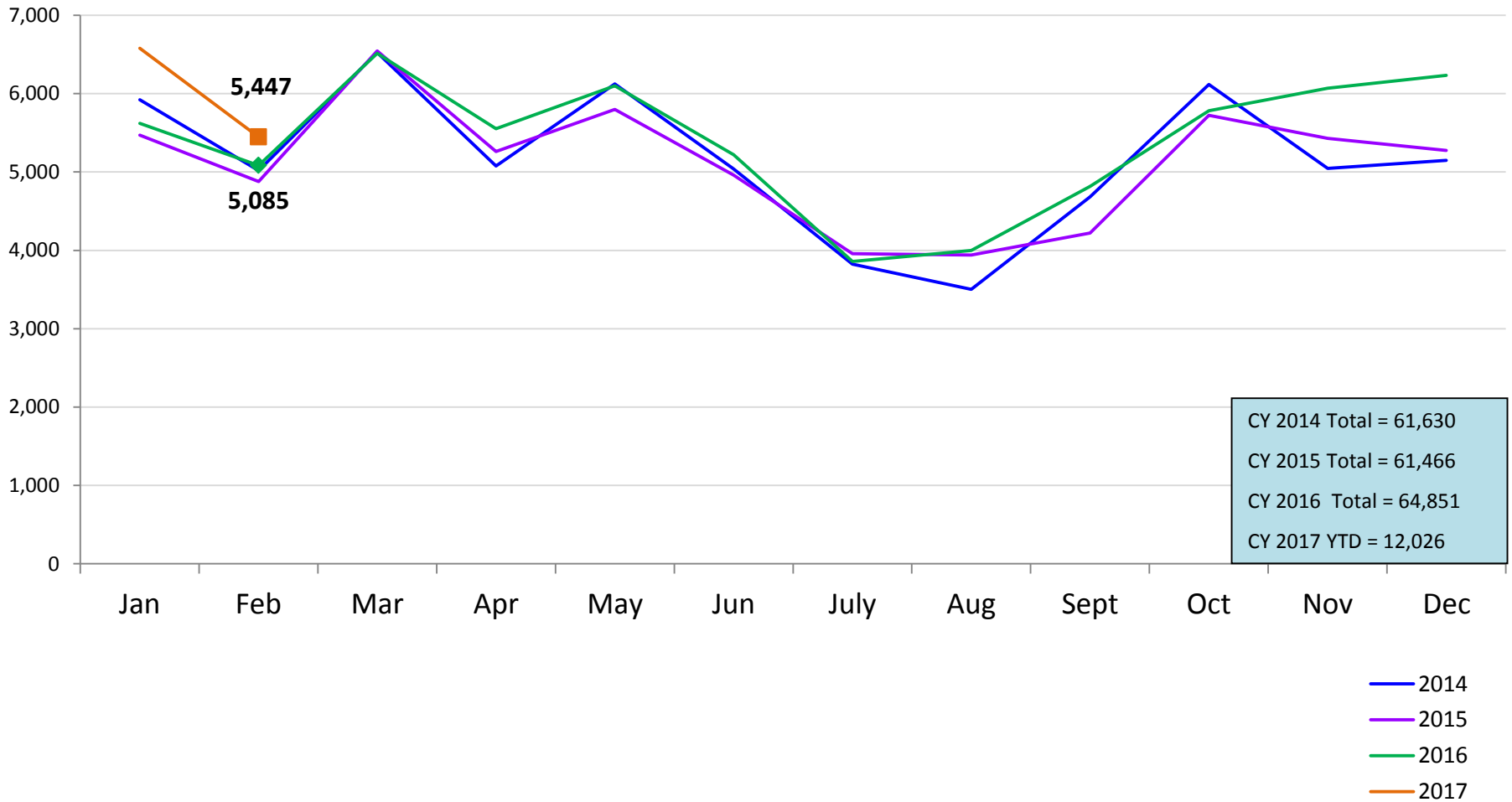
Children Enrolled in Contracted EarlyLearn Programs and Children Using Vouchers for Child Care

January 2014 – February 2017(End of Month)



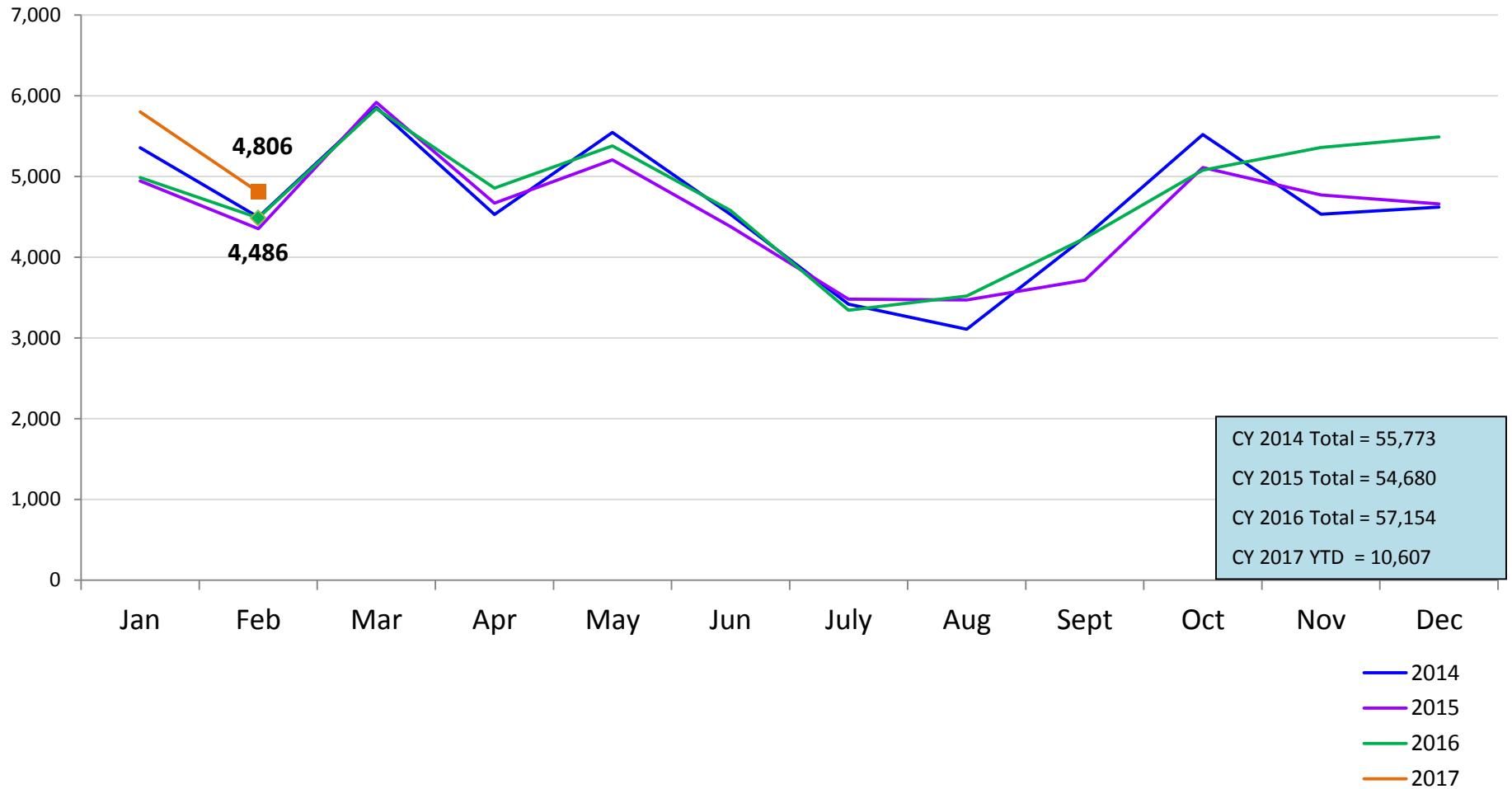
SCR Intakes

January 2014 – February 2017 (Monthly Total)



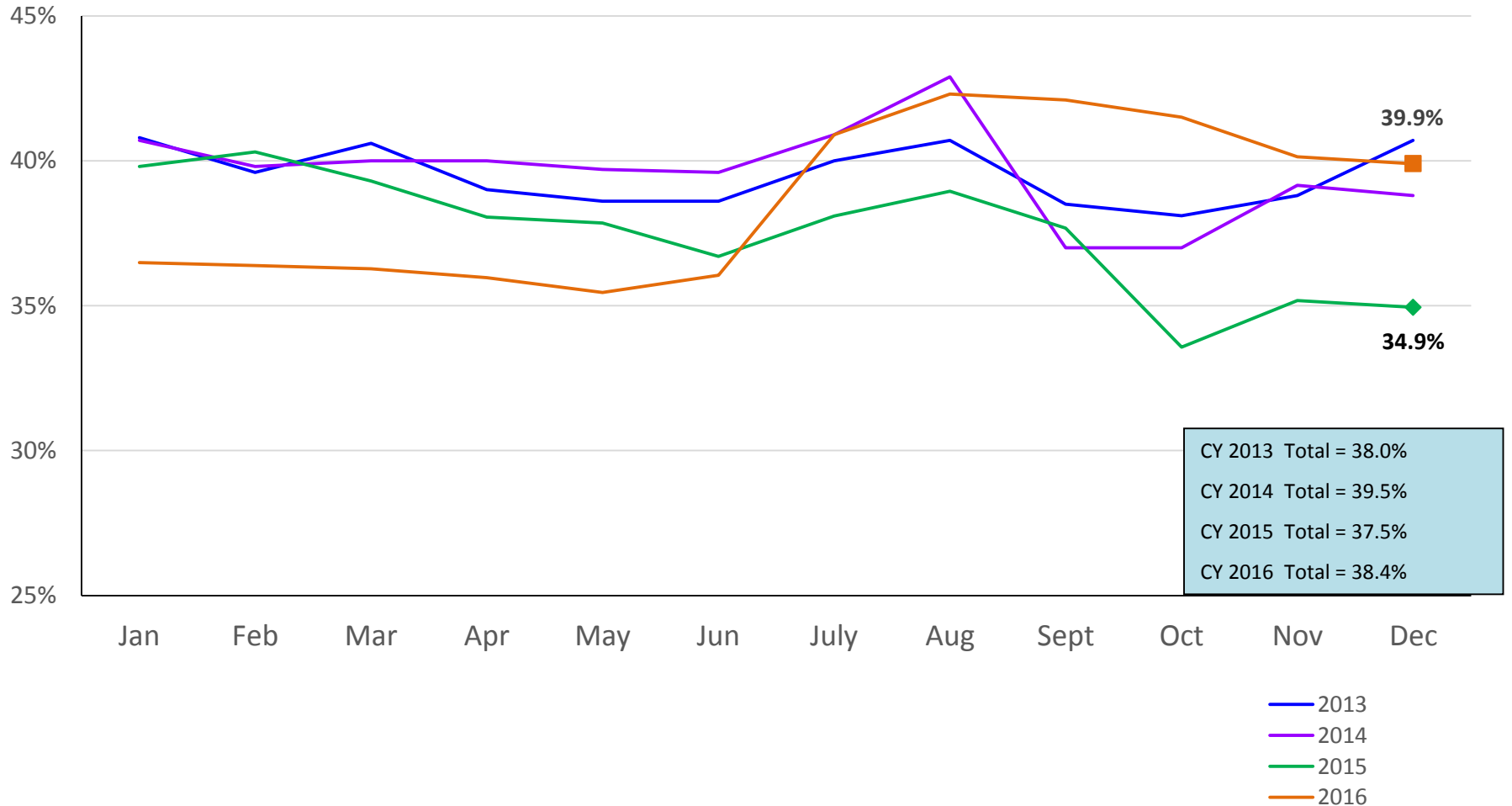
SCR Consolidated Investigations

January 2014 – February 2017 (Monthly Total)



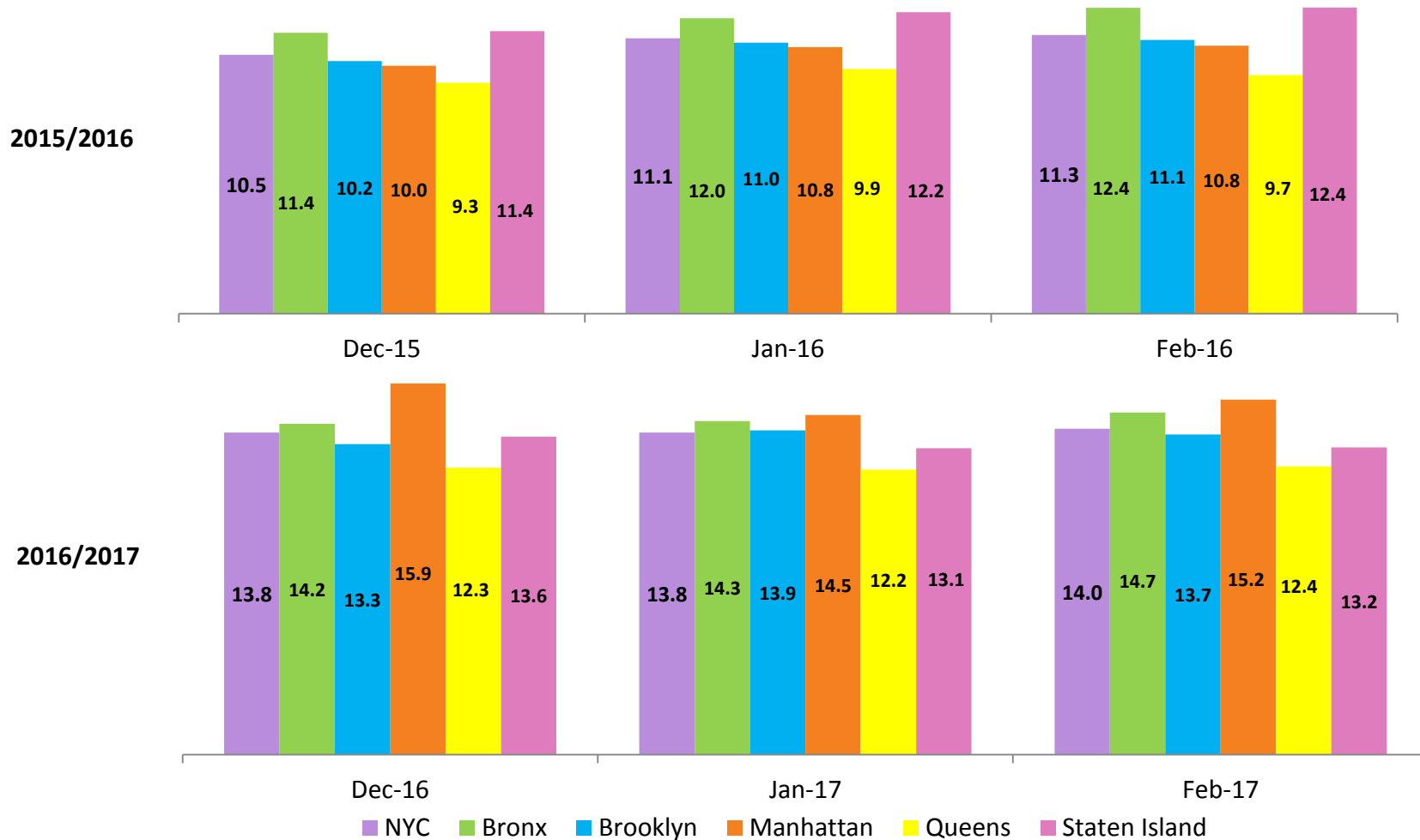
SCR Investigation Indication Rate

January 2013 – December 2016



Average P/D Combined Caseload*

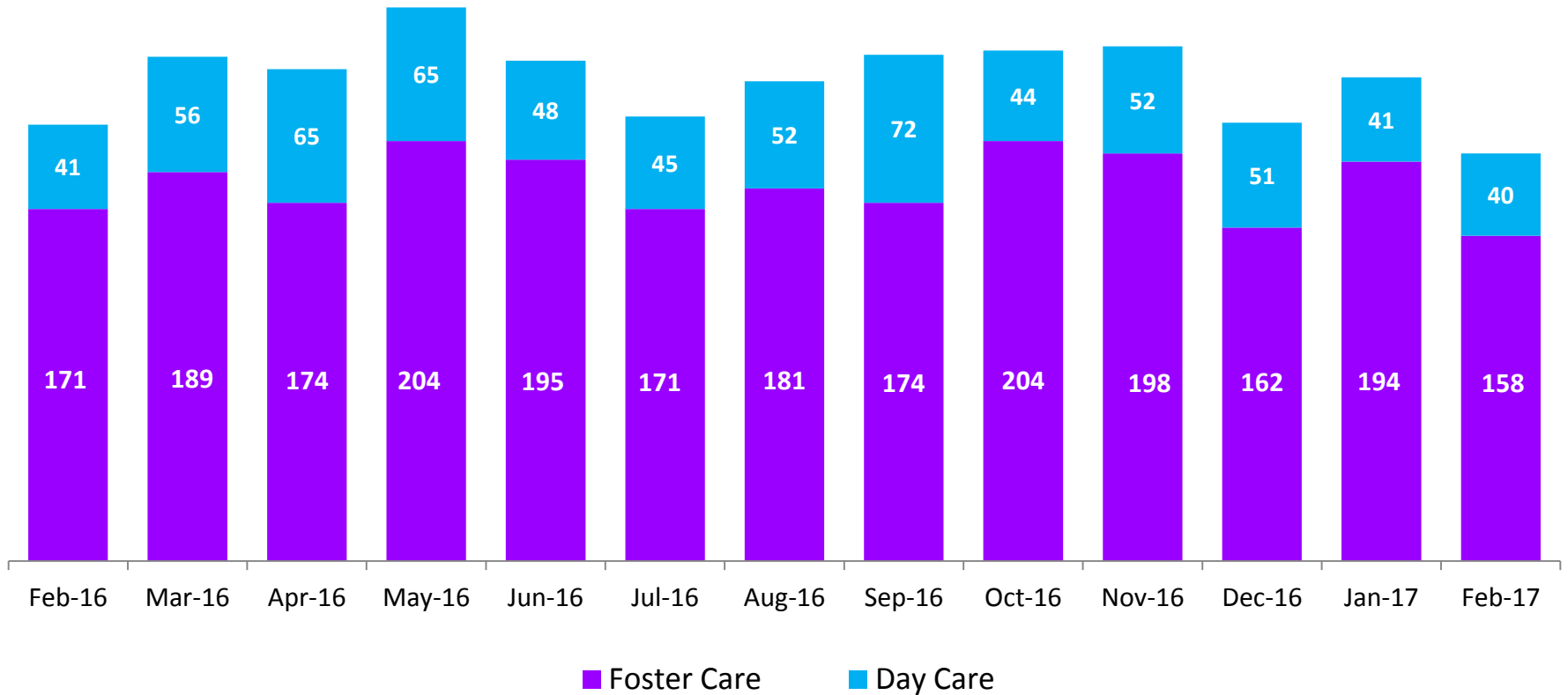
December 2015 – February 2016 & December 2016 – February 2017



* Caseloads are of protective/diagnostic caseworkers only and exclude the caseloads carried by Level I and Level II Supervisors.

OSI Investigations

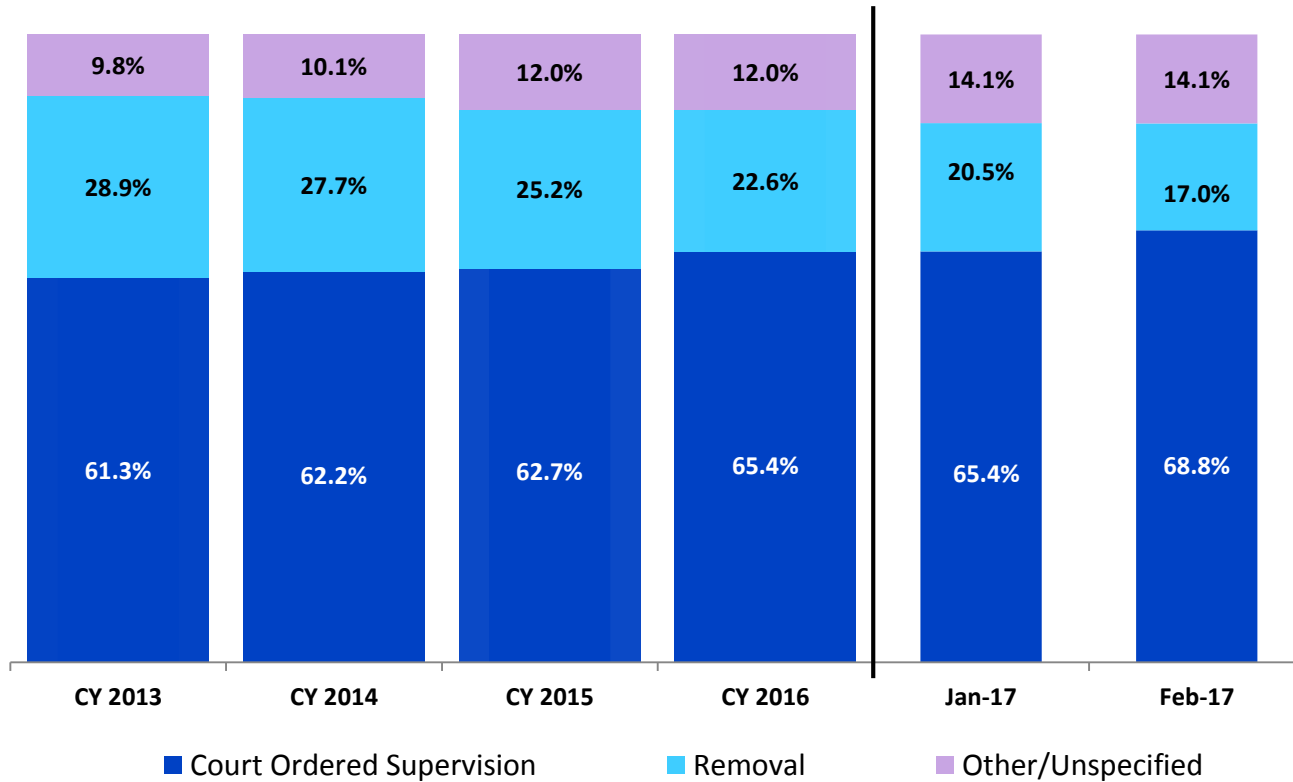
February 2016 – February 2017



	Feb 2016	Mar 2016	Apr 2016	May 2016	Jun 2016	Jul 2016	Aug 2016	Sep 2016	Oct 2016	Nov 2016	Dec 2016	Jan 2017	Feb 2017
Number of Investigations	212	245	239	269	243	216	233	246	248	250	213	235	198

Article 10 Filings and Initial Hearing Outcomes, Children

CY 2013 – February 2017

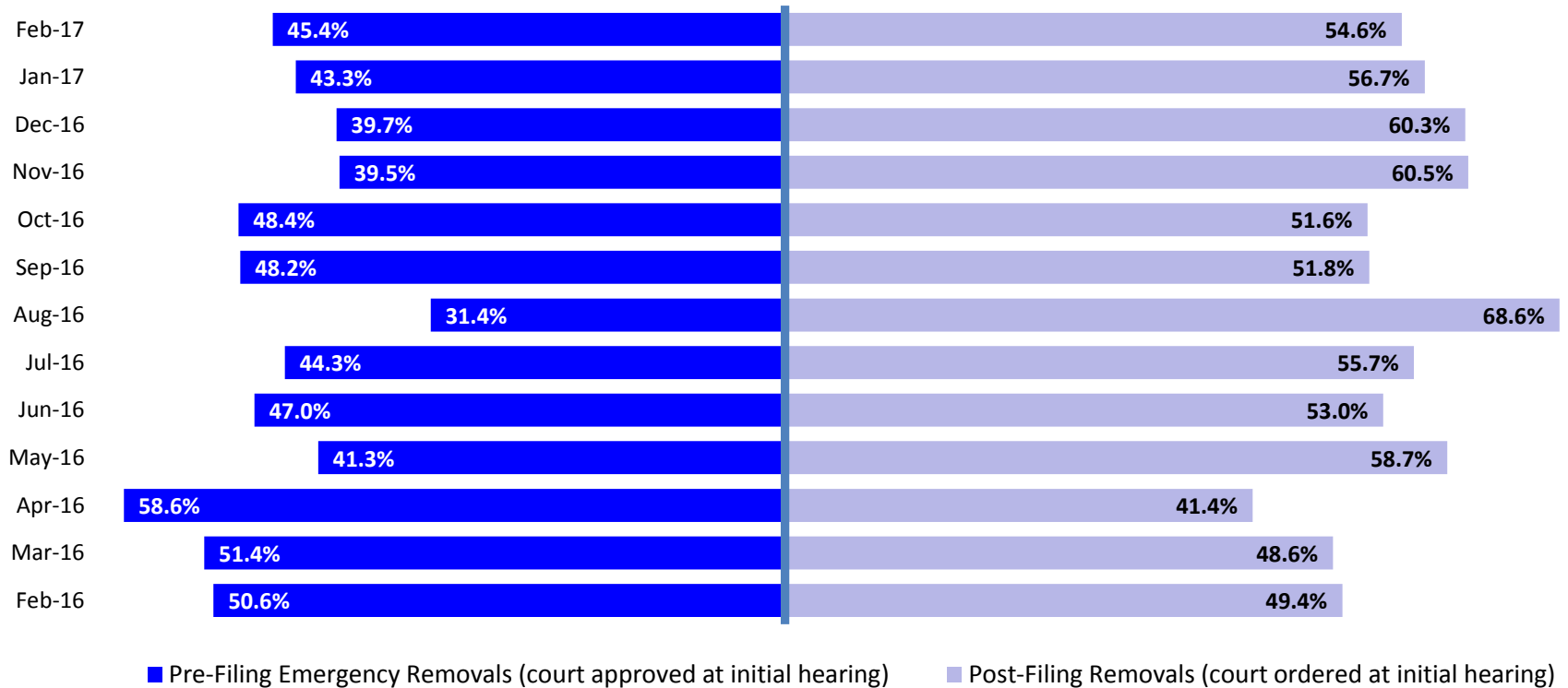


	CY 2013	CY 2014	CY 2015	CY 2016	Jan 2017	Feb 2017
Children with Article 10 Filings	9,318	9,900	10,243	11,453	1,354	1,139

Note: The category “Other/Unspecified” includes released with no supervision, no order issued and no outcome specified.

Article 10 Filing Removals, Court Approved at Initial Hearing, Children

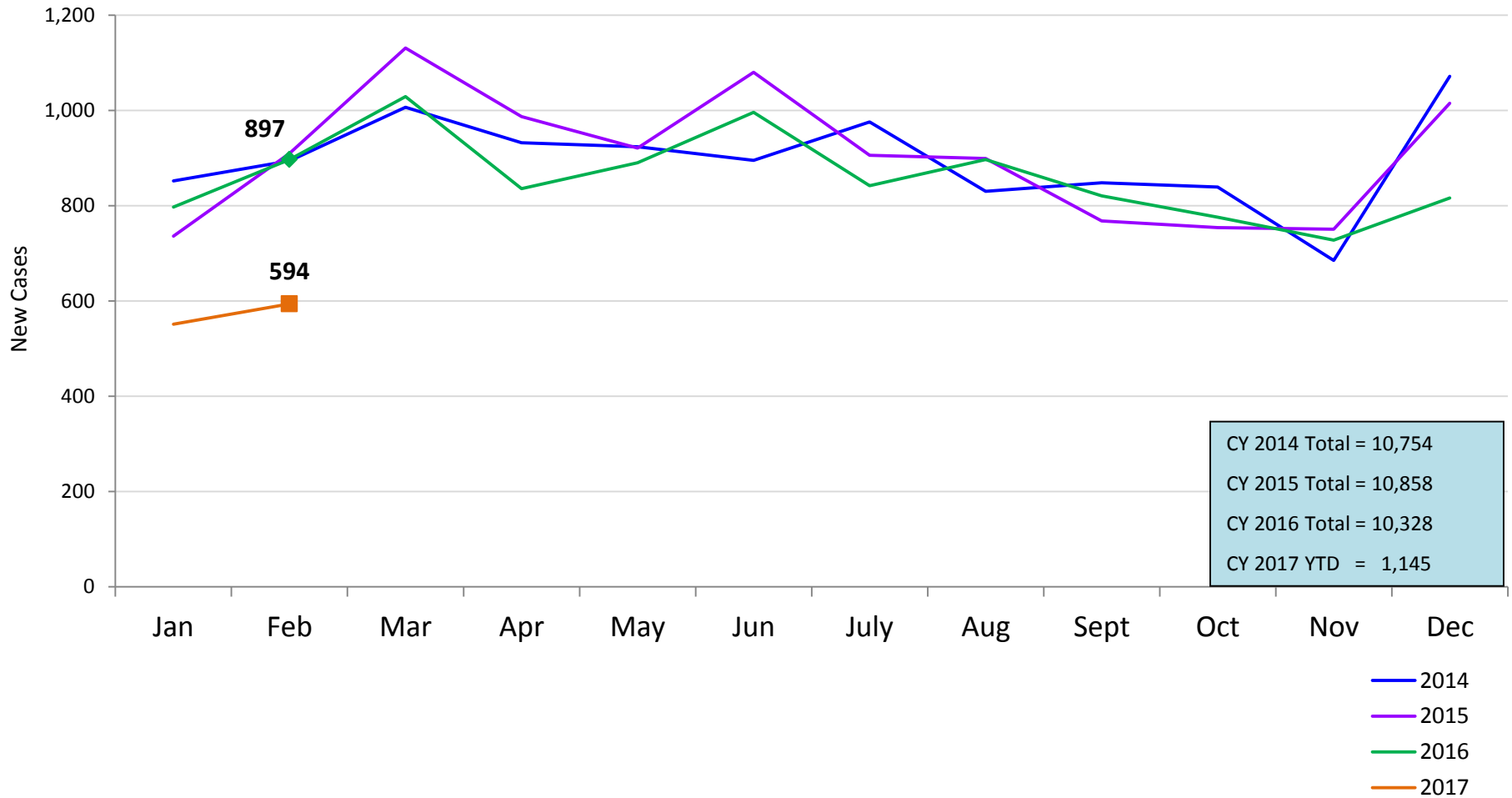
February 2016 – February 2017



	Feb 2016	Mar 2016	Apr 2016	May 2016	June 2016	July 2016	Aug 2016	Sep 2016	Oct 2016	Nov 2016	Dec 2016	Jan 2017	Feb 2017
Children Removed	243	208	181	150	183	210	204	199	312	223	287	277	194

New Child Welfare Preventive Cases*

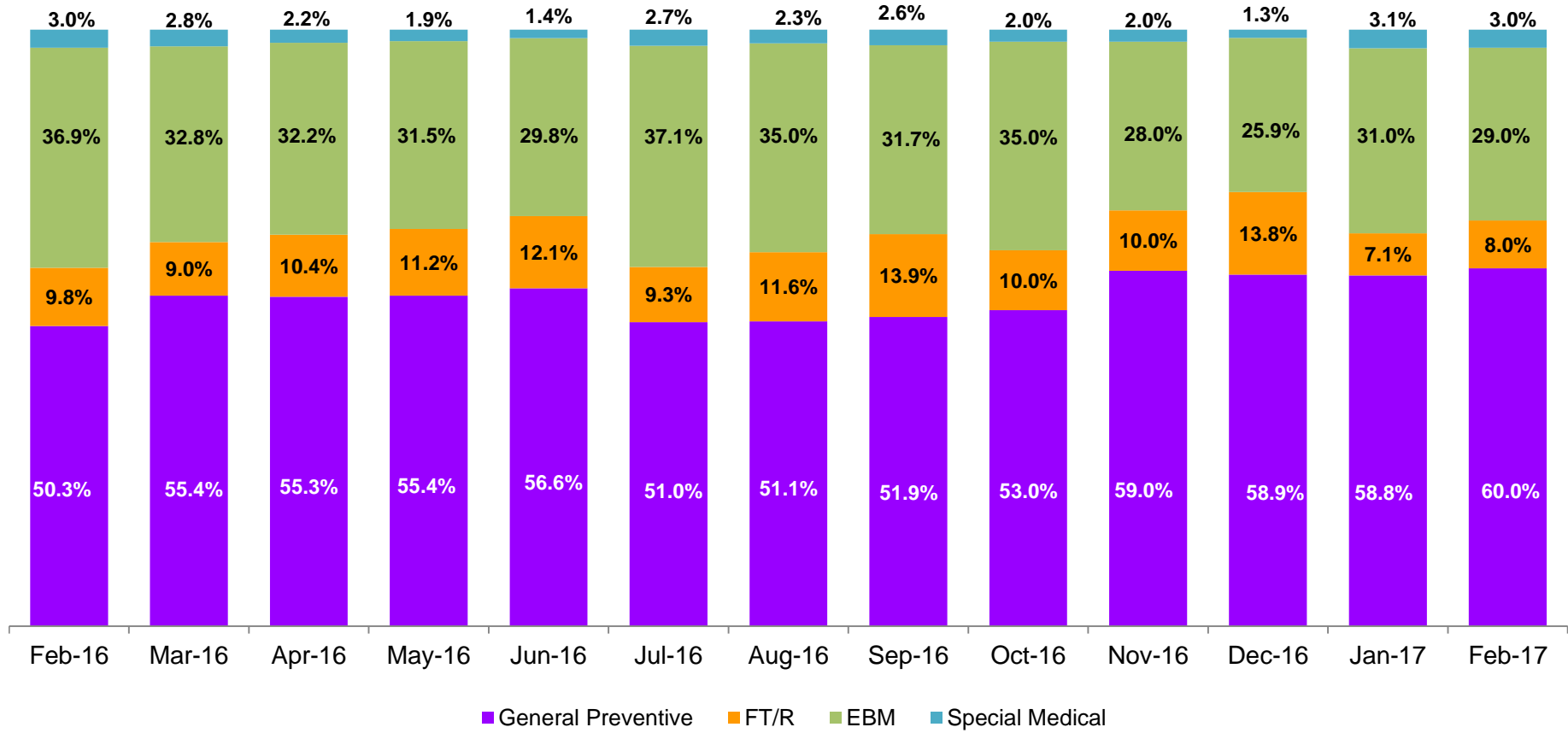
January 2014 – February 2017



* New preventive cases do not include cases transferred from one preventive program to another. See Pages 33 and 34 of the Appendix for supporting data.

New Child Welfare Preventive Cases by Program Type *

February 2016 – February 2017

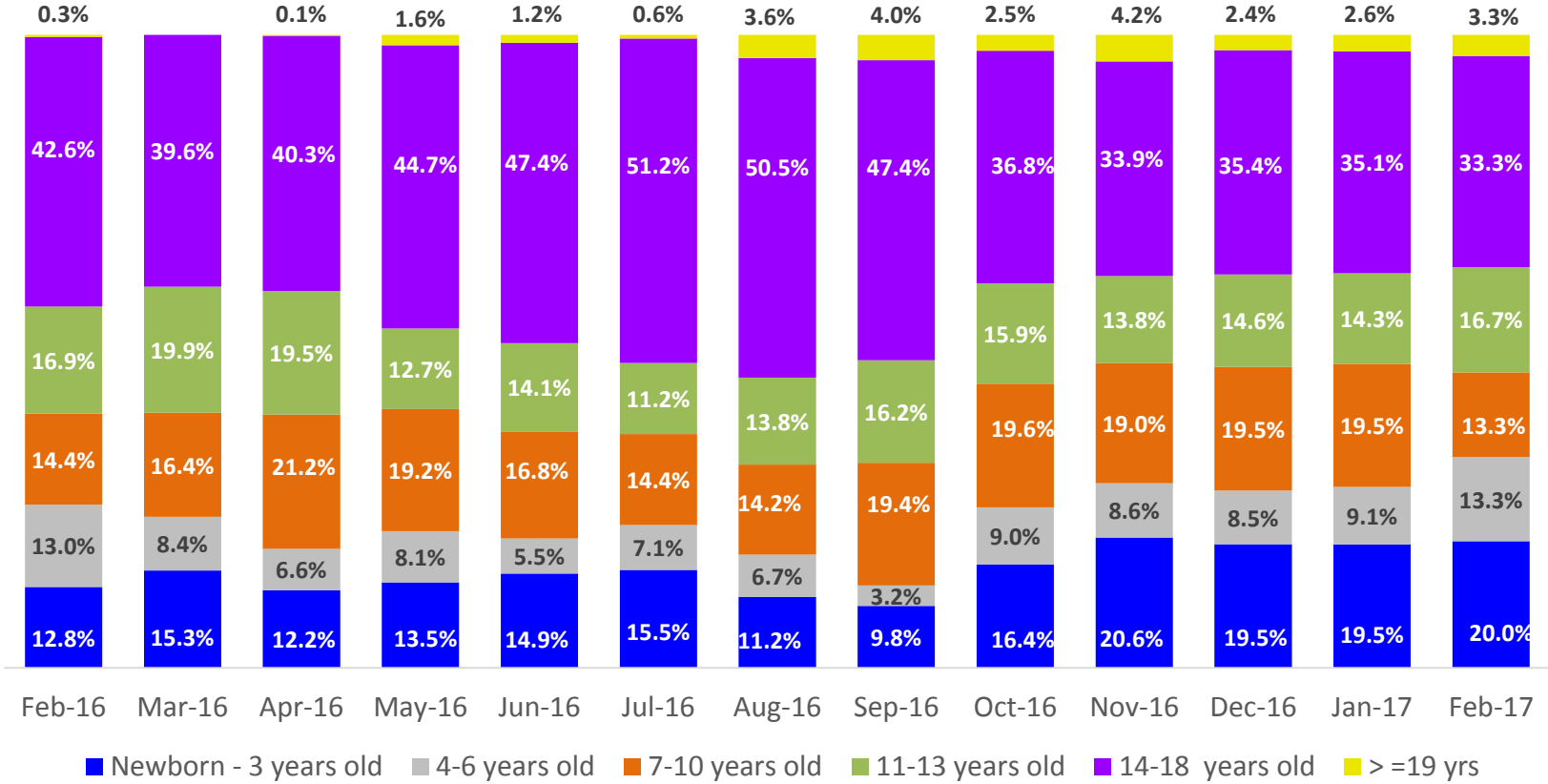


	Feb 2016	Mar 2016	Apr 2016	May 2016	June 2016	July 2016	Aug 2016	Sep 2016	Oct 2016	Nov 2016	Dec 2016	Jan 2017	Feb 2017
Number of New Preventive Cases	897	1029	836	890	996	842	897	821	776	728	816	551	594

* New preventive cases exclude cases transferred from one preventive program to another.

Average Pre-Placement Residential Monthly Population

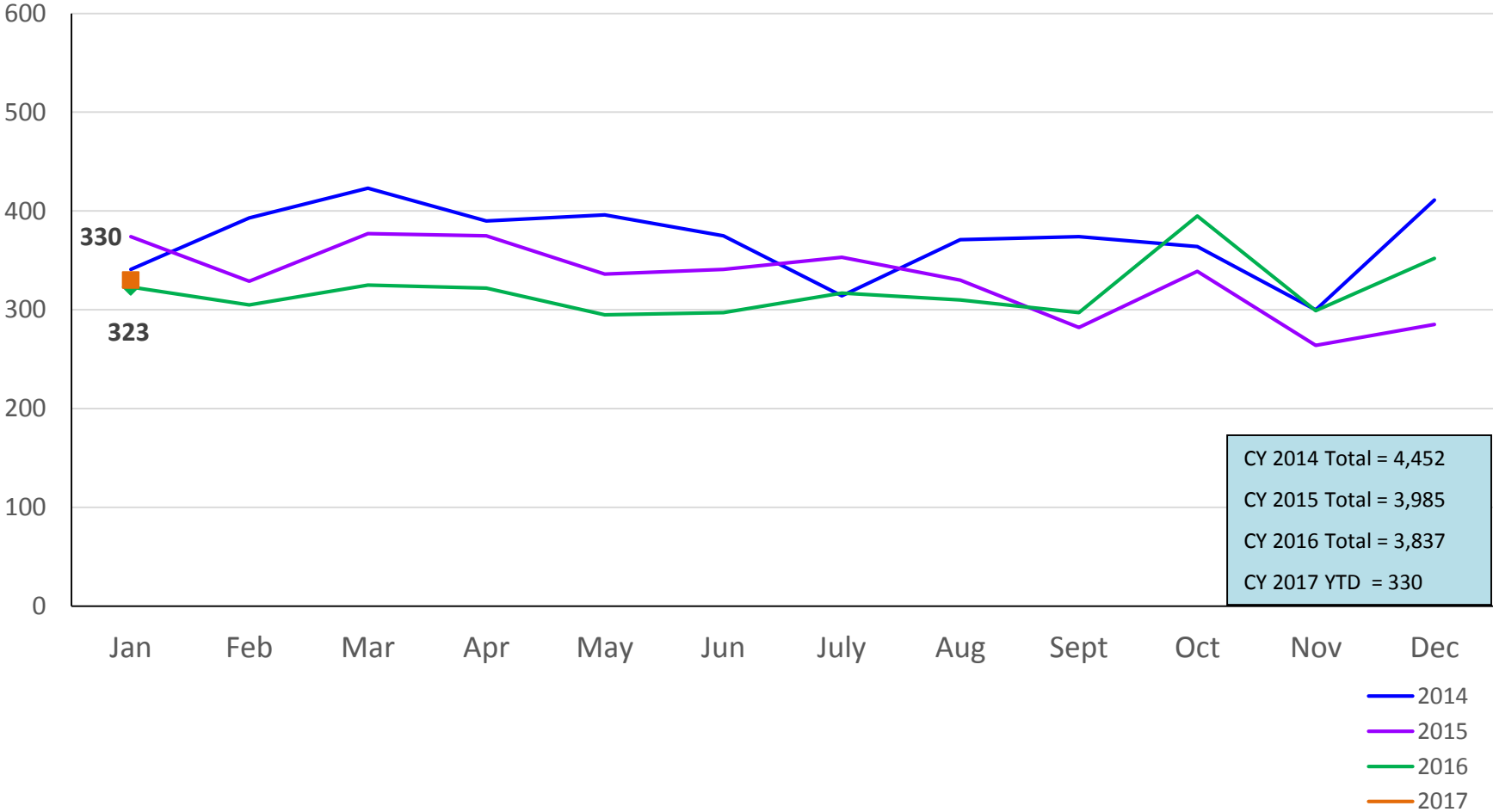
February 2016 – February 2017



	Feb 2016	Mar 2016	Apr 2016	May 2016	Jun 2016	Jul 2016	Aug 2016	Sep 2016	Oct 2016	Nov 2016	Dec 2016	Jan 2017	Feb 2017
Average Number of Children	45	49	53	34	40	50	56	54	71	62	82	77	60

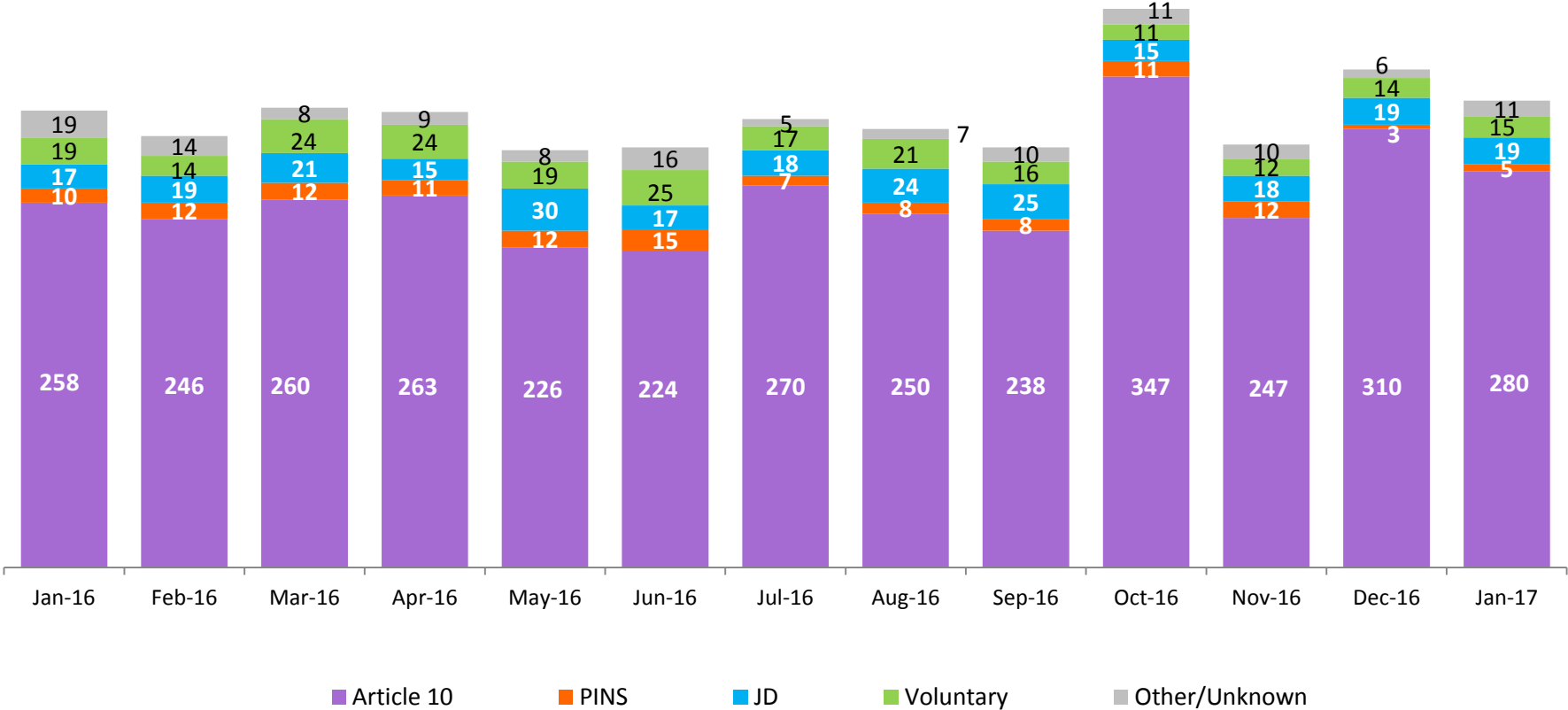
Total Monthly Placements of Children in Foster Care

January 2014 – January 2017



Reason for Initial Placement of Children into Foster Care

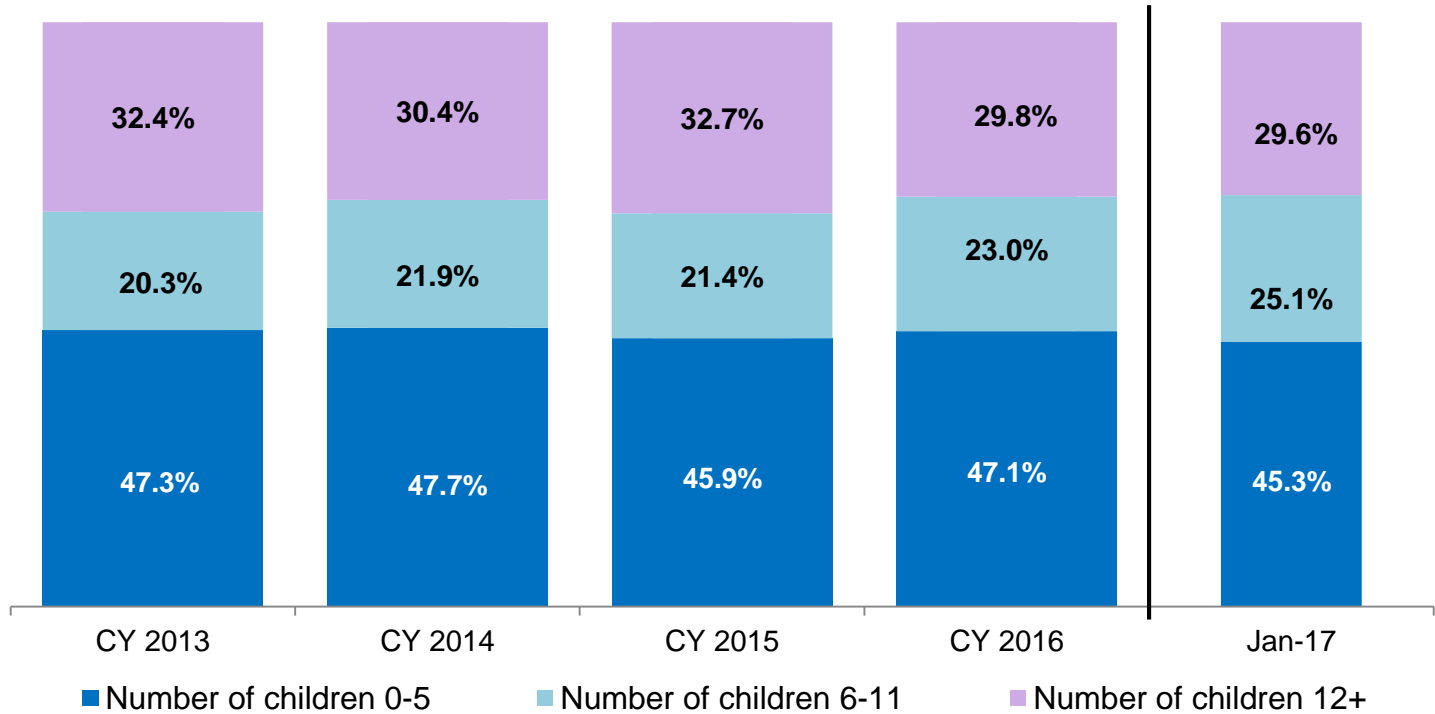
January 2016 – January 2017



	Jan 2016	Feb 2016	Mar 2016	Apr 2016	May 2016	Jun 2016	Jul 2016	Aug 2016	Sep 2016	Oct 2016	Nov 2016	Dec 2016	Jan 2017
Number of Placements of Children	323	305	325	322	295	297	317	310	297	395	299	352	330

Placements of Children* by Age

CY 2013 - January 2017

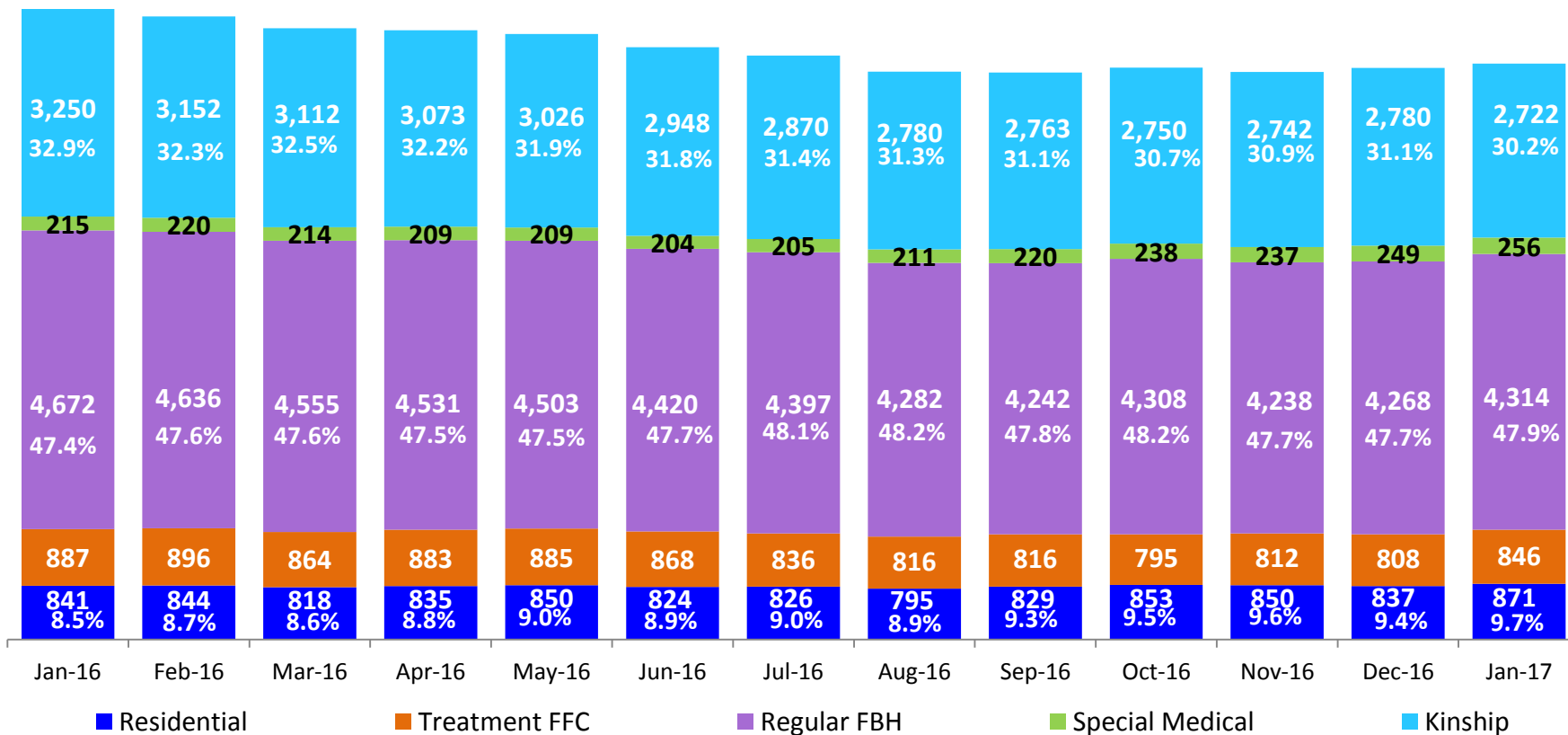


	CY 2013	CY 2014	CY 2015	CY 2016	Jan 2017
Placements of Children	4,283	4,160	3,760	3,599	311

*Excludes JD placements.

Children in Foster Care *

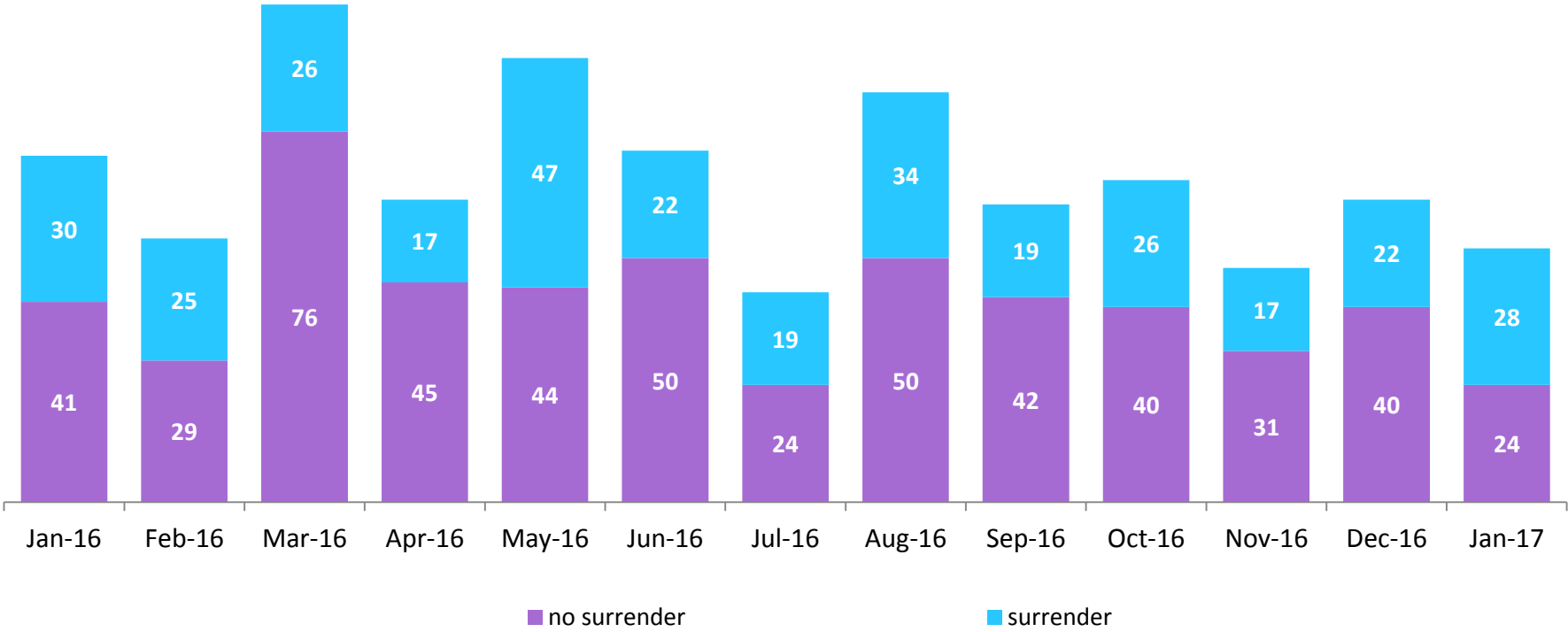
January 2016 – January 2017 (end of month)



	Jan 2016	Feb 2016	Mar 2016	Apr 2016	May 2016	Jun 2016	Jul 2016	Aug 2016	Sep 2016	Oct 2016	Nov 2016	Dec 2016	Jan 2017
Number in Foster Care	9,865	9,748	9,563	9,531	9,473	9,264	9,134	8,884	8,870	8,944	8,879	8,942	9,009

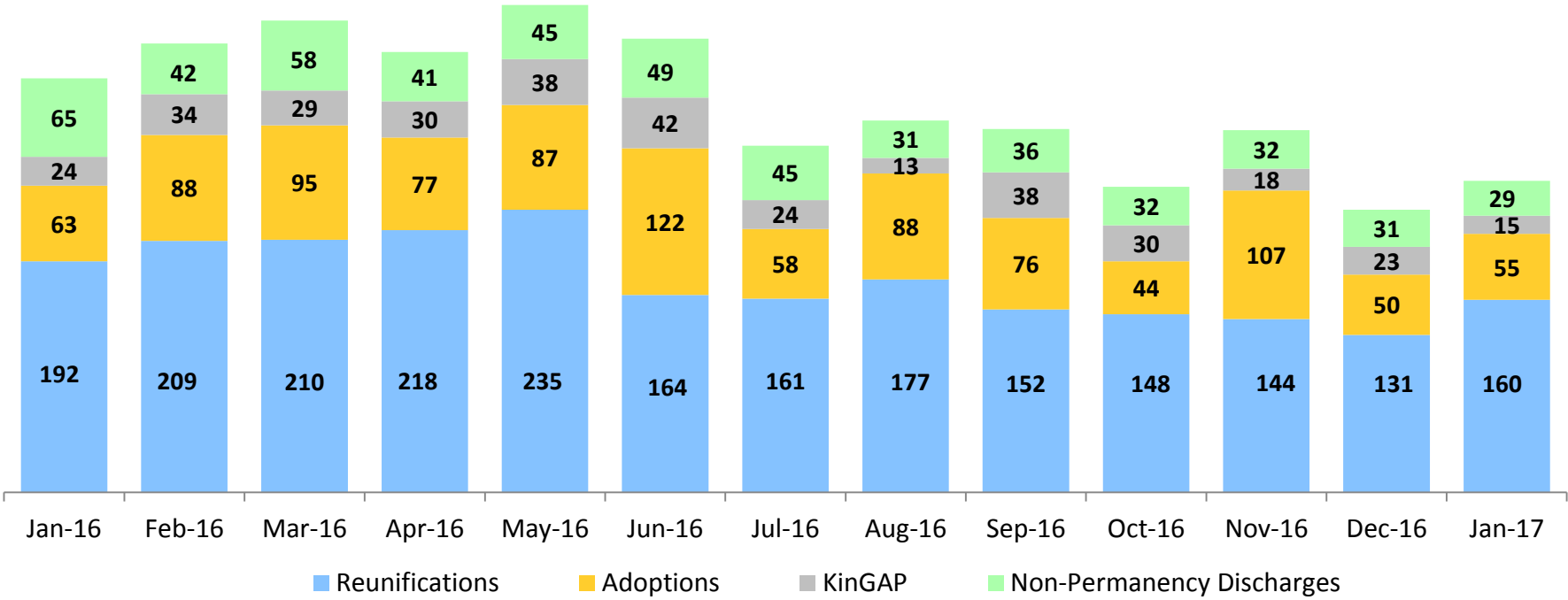
*Excludes JD placements and includes children in 24 hour care and approximately 200 young children who are living in foster homes or residential care facilities with their mothers who are in foster care (8D children).

Children Freed for Adoption, Surrender by at Least One Parent January 2016 – January 2017



	Jan 2016	Feb 2016	Mar 2016	Apr 2016	May 2016	Jun 2016	Jul 2016	Aug 2016	Sep 2016	Oct 2016	Nov 2016	Dec 2016	Jan 2017
Number Freed for Adoption	71	54	102	62	91	72	43	81	61	66	48	62	52

Permanency and Non-Permanency* Discharges from Foster Care** January 2016 – January 2017



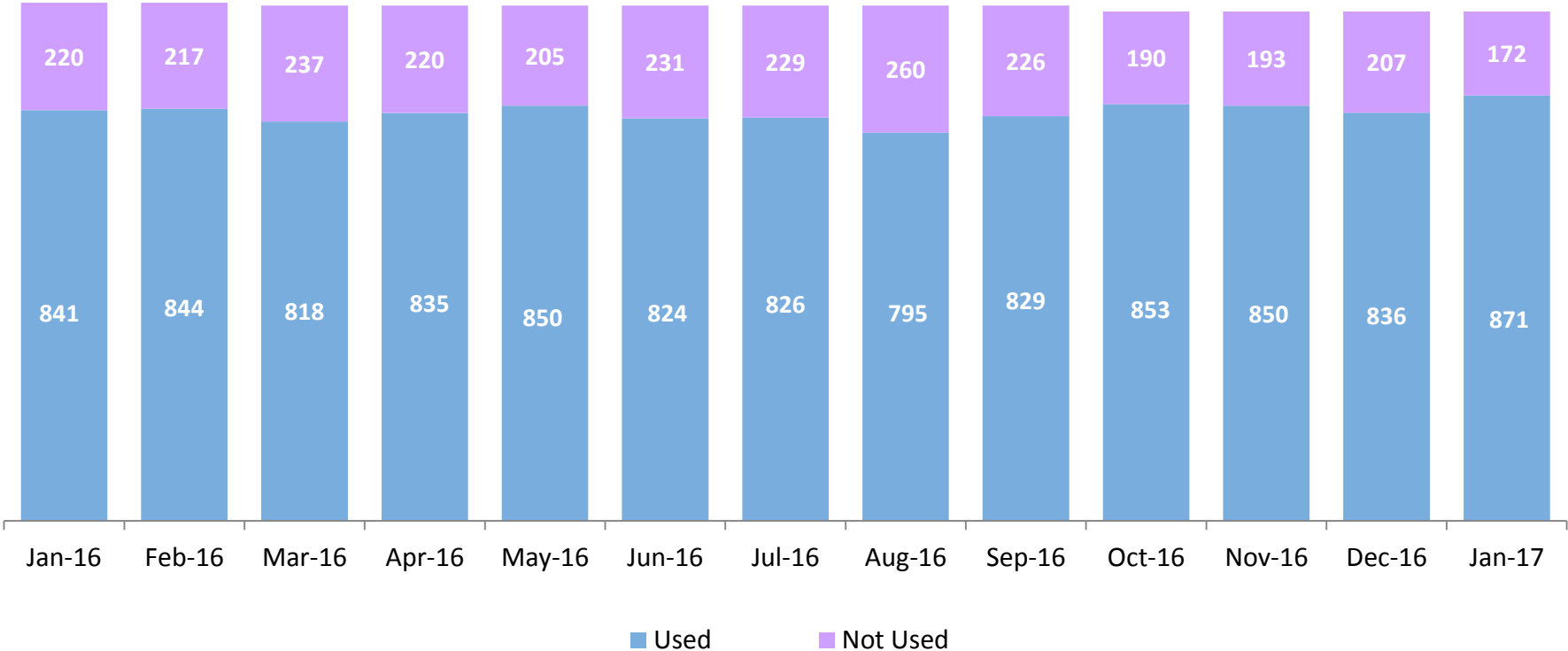
	Jan 2016	Feb 2016	Mar 2016	Apr 2016	May 2016	Jun 2016	Jul 2016	Aug 2016	Sep 2016	Oct 2016	Nov 2016	Dec 2016	Jan 2017
Number of Discharges	344	373	392	366	405	377	288	309	302	254	301	235	259

*Non-permanency discharges include AWOL, APPLA , other discharge destinations such as psychiatric institutions and correctional facilities and discharges with unspecified destinations.

**Excludes discharges of youth who entered care as a JD.

Residential Care Capacity and Utilization

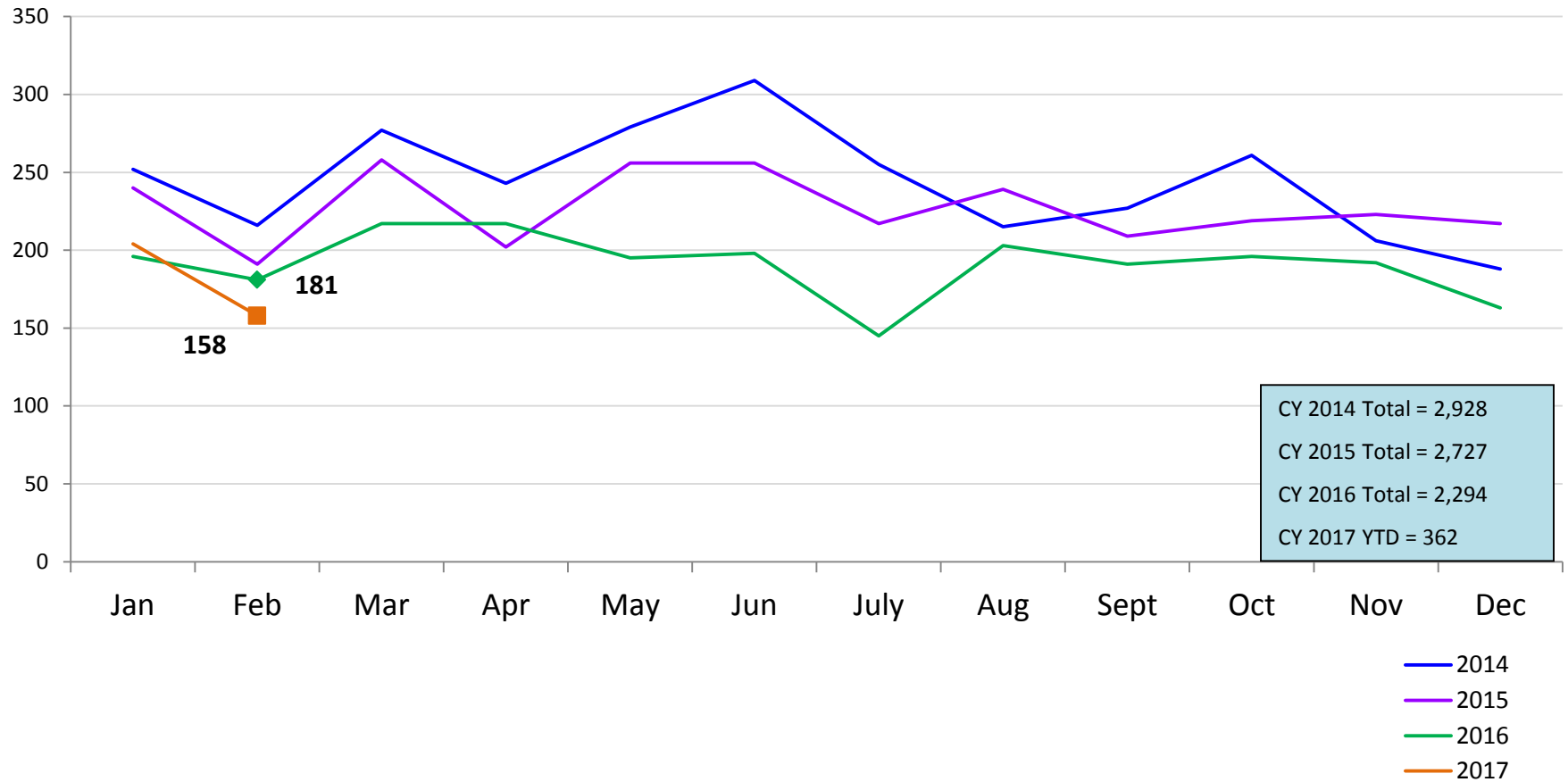
January 2016– January 2017



	Jan 2016	Feb 2016	Mar 2016	Apr 2016	May 2016	Jun 2016	Jul 2016	Aug 2016	Sep 2016	Oct 2016	Nov 2016	Dec 2016	Jan 2017
Capacity	1,061	1,061	1,055	1,055	1,055	1,055	1,055	1,055	1,055	1,043	1,043	1,043	1,043

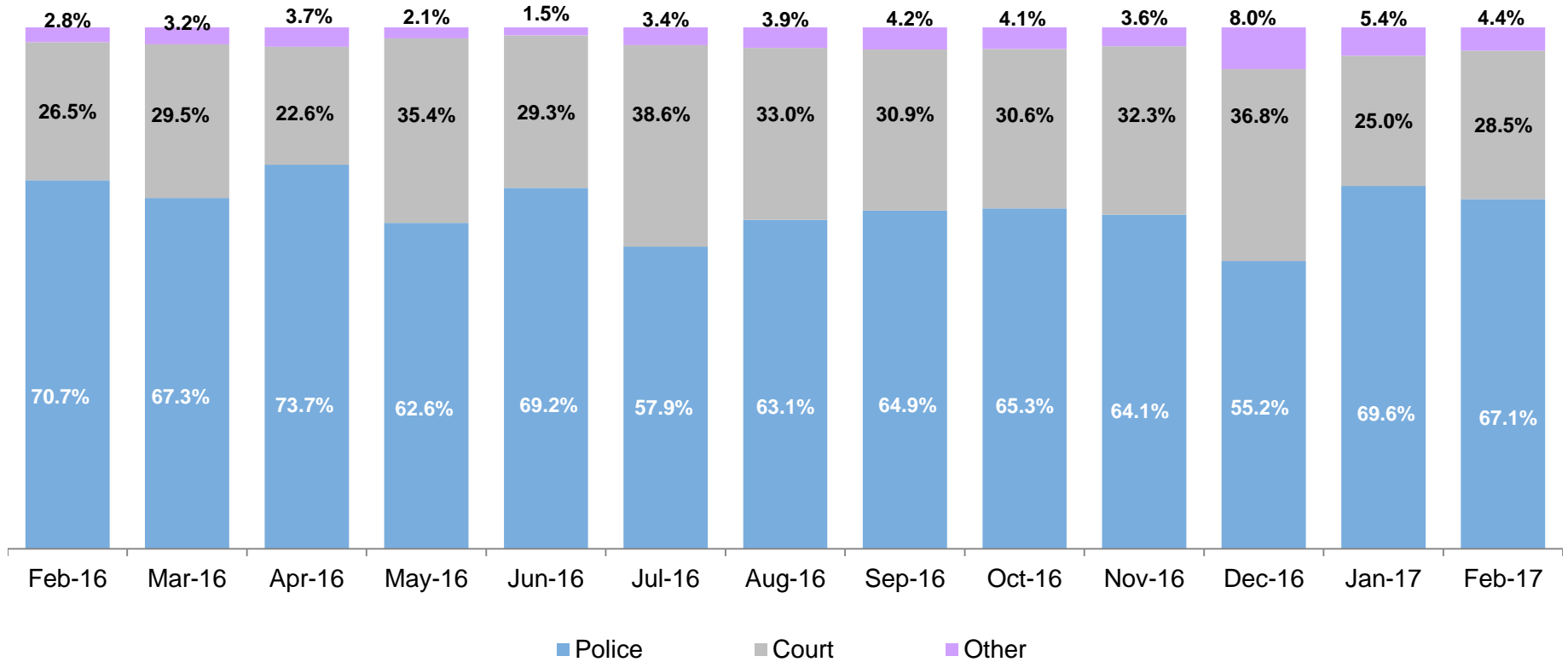
Total Monthly Admissions to Detention

January 2014 – February 2017 (Monthly Total)



Admit Authority on Admissions

February 2016 – February 2017 (Monthly Total)

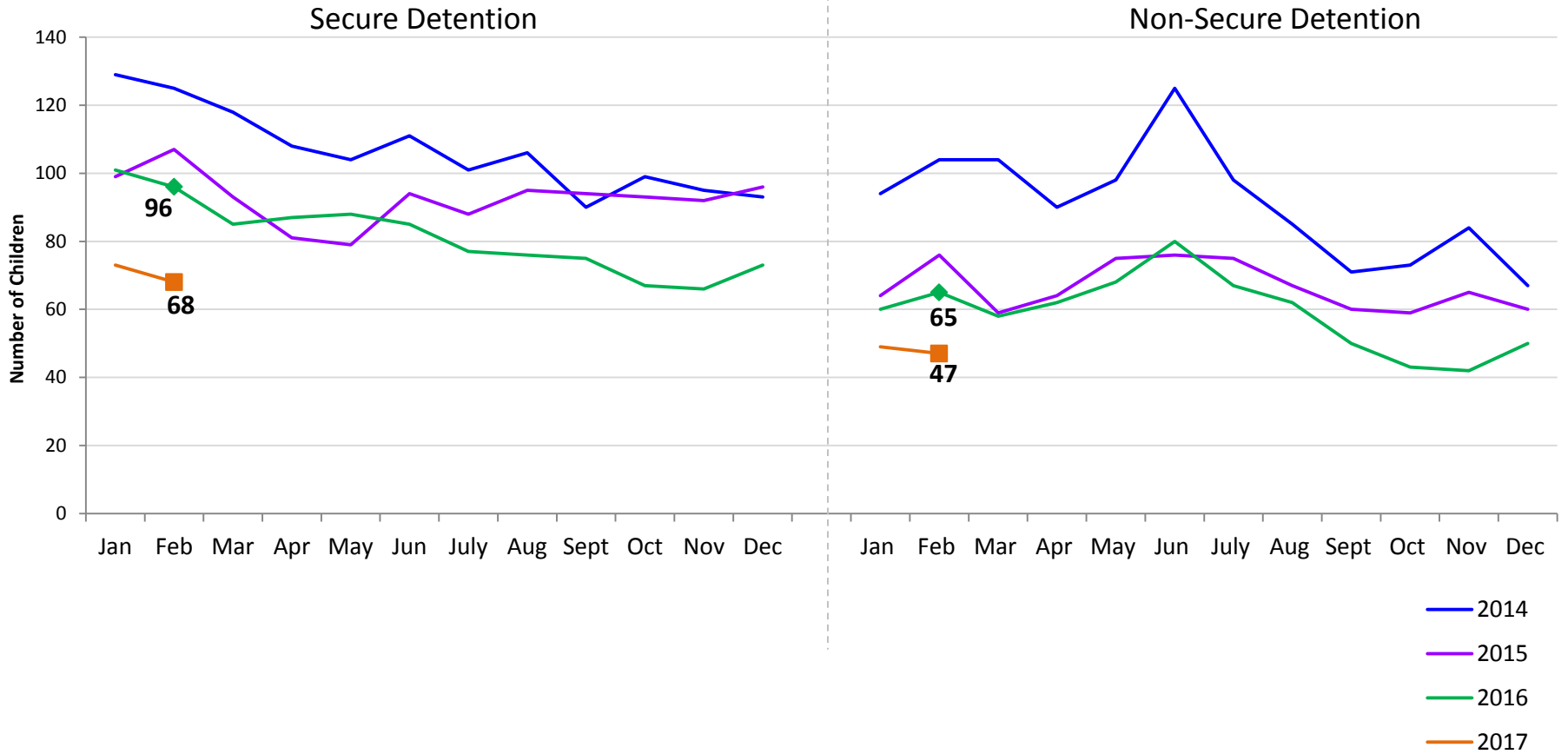


	Feb 2016	Mar 2016	Apr 2016	May 2016	Jun 2016	Jul 2016	Aug 2016	Sep 2016	Oct 2016	Nov 2016	Dec 2016	Jan 2017	Feb 2017
Number of Admissions	181	217	217	195	198	145	203	191	196	192	163	204	158

Note: Other Admit Authority includes the Sheriff Department, Department of Corrections and ACS.

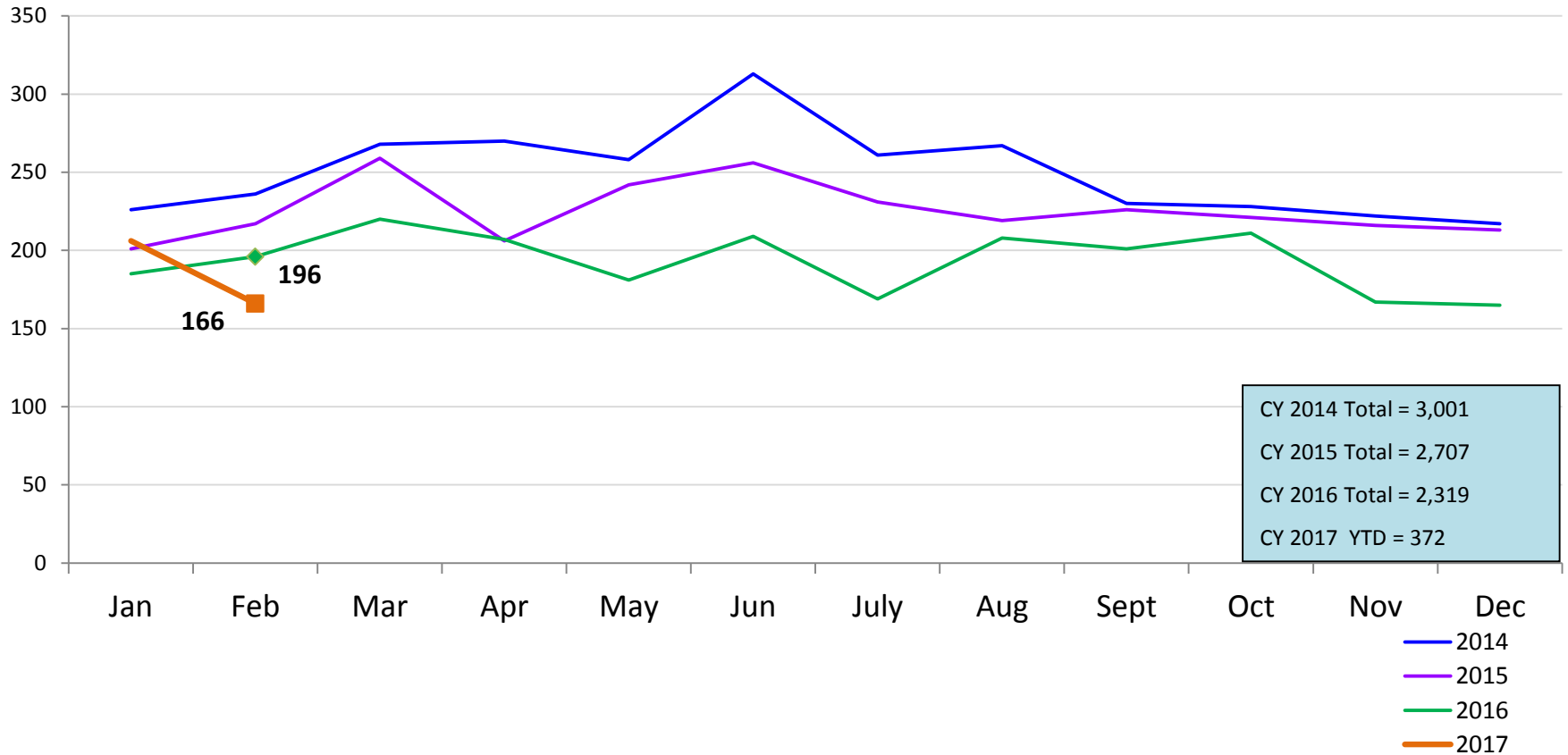
Monthly Average Daily Population

January 2014 – February 2017



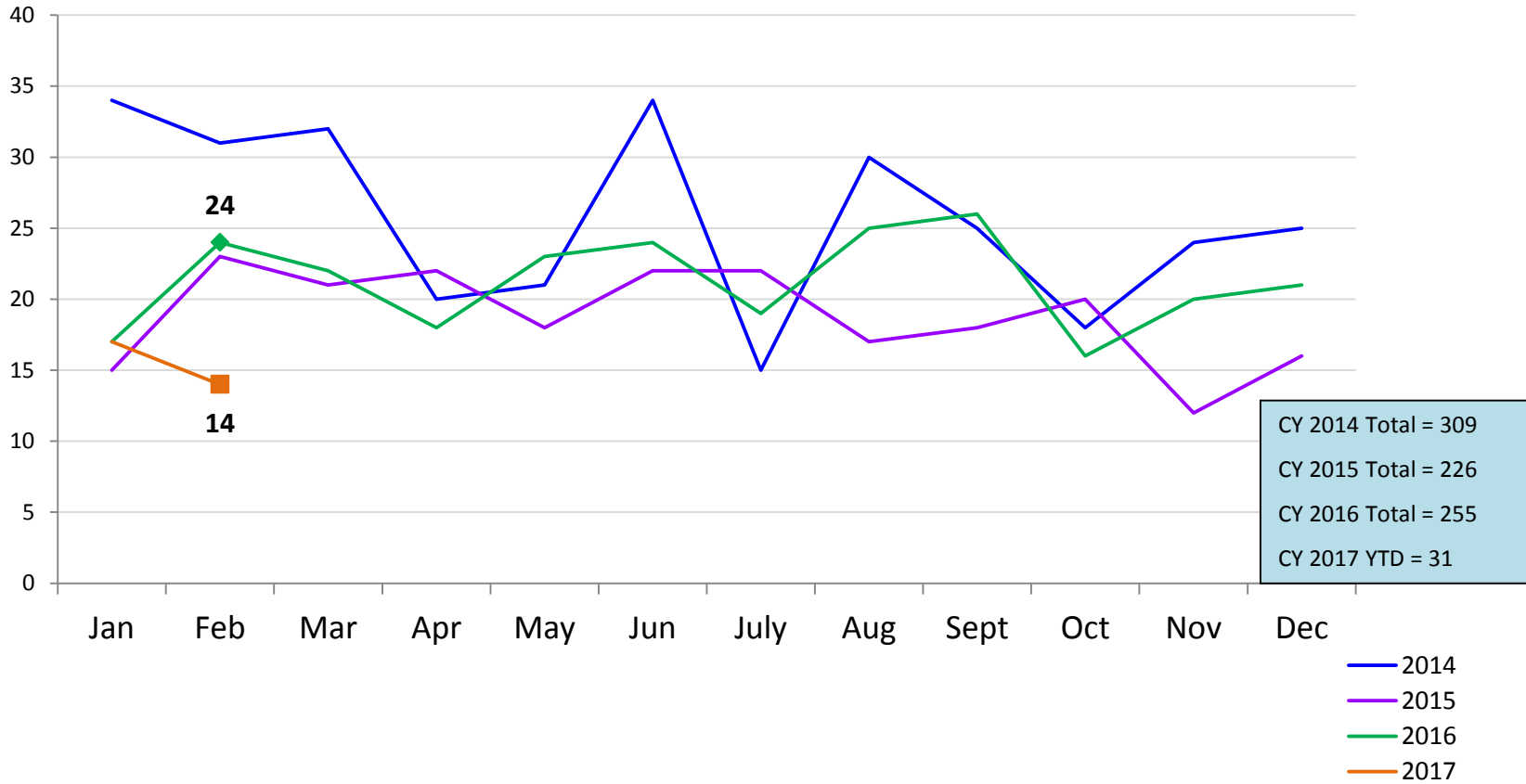
Total Monthly Releases from Detention

January 2014 – February 2017 (Monthly Total)



Close to Home Intakes*

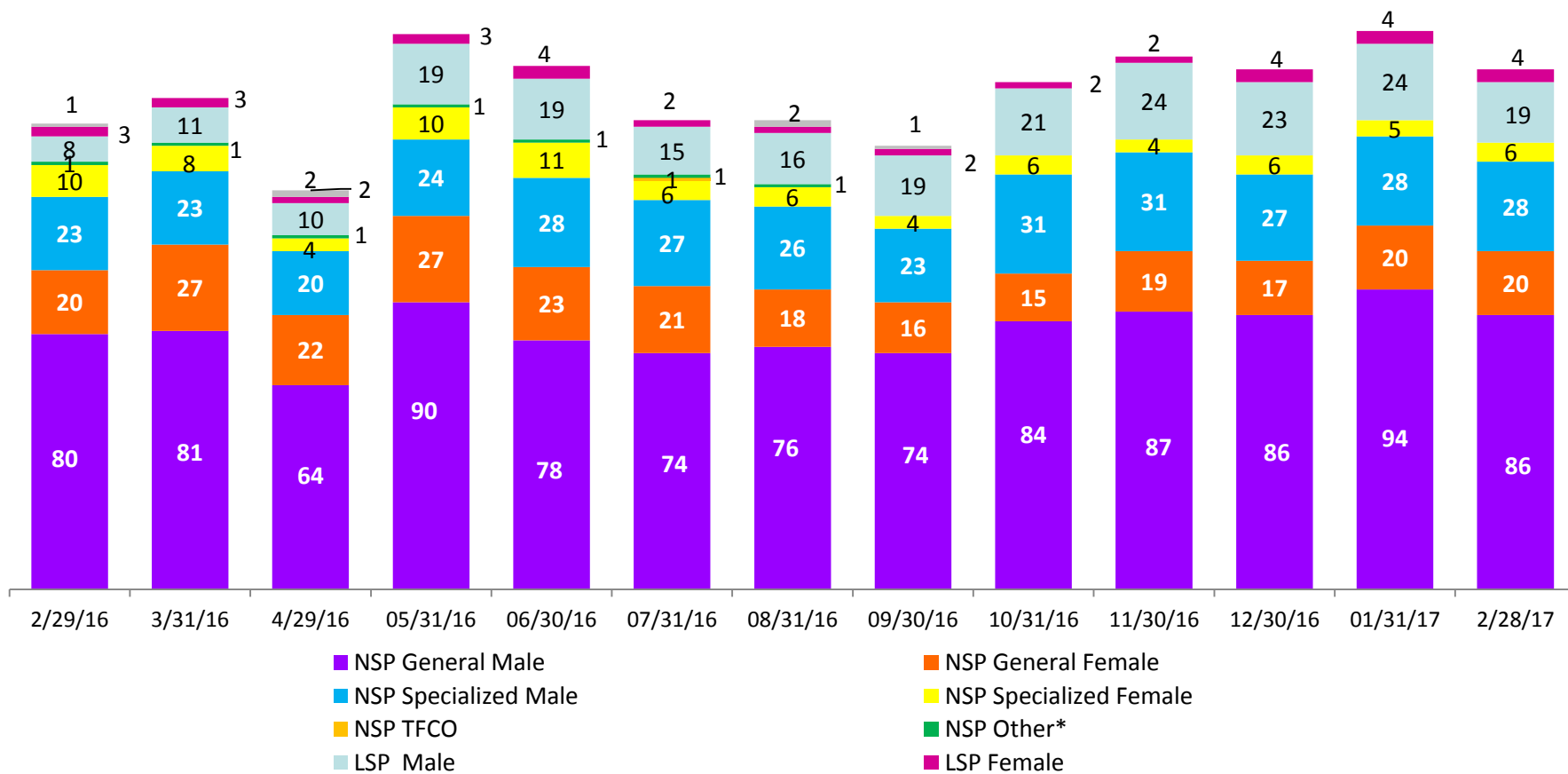
January 2014 – February 2017 (Monthly Total)



*Beginning in December 2015 Close to Home Intakes include LSP as well as NSP.

CTH Placement, in 24-hour Care

February 2016– February 2017 (end of month)

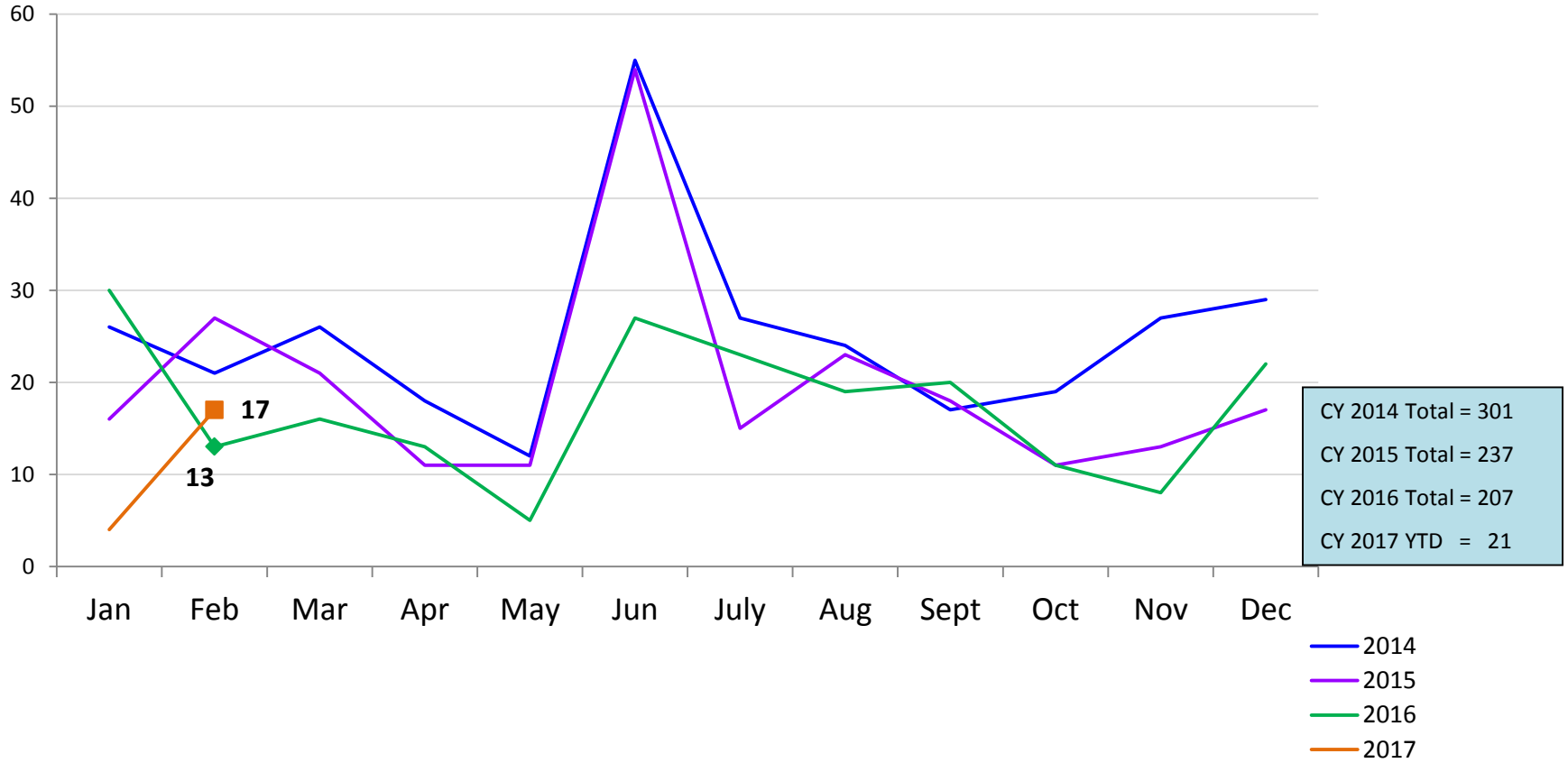


Number in Placement													
	2/29/16	3/31/16	4/29/16	5/31/16	6/30/16	7/31/16	8/31/16	9/30/16	10/31/16	11/30/16	12/30/16	1/31/17	2/28/17
NSP	134	140	111	152	141	130	127	117	136	141	136	147	140
LSP	12	14	14	22	23	17	20	22	23	26	27	28	23

*NSP Other includes youth in child welfare and mother/child placements.

Releases from Close to Home Placement to Aftercare

January 2014 – February 2017 (Monthly Total)



Appendix

Figure 1: SCR Intakes by Borough, DEC 15 - FEB 16 and DEC 16 - FEB 17

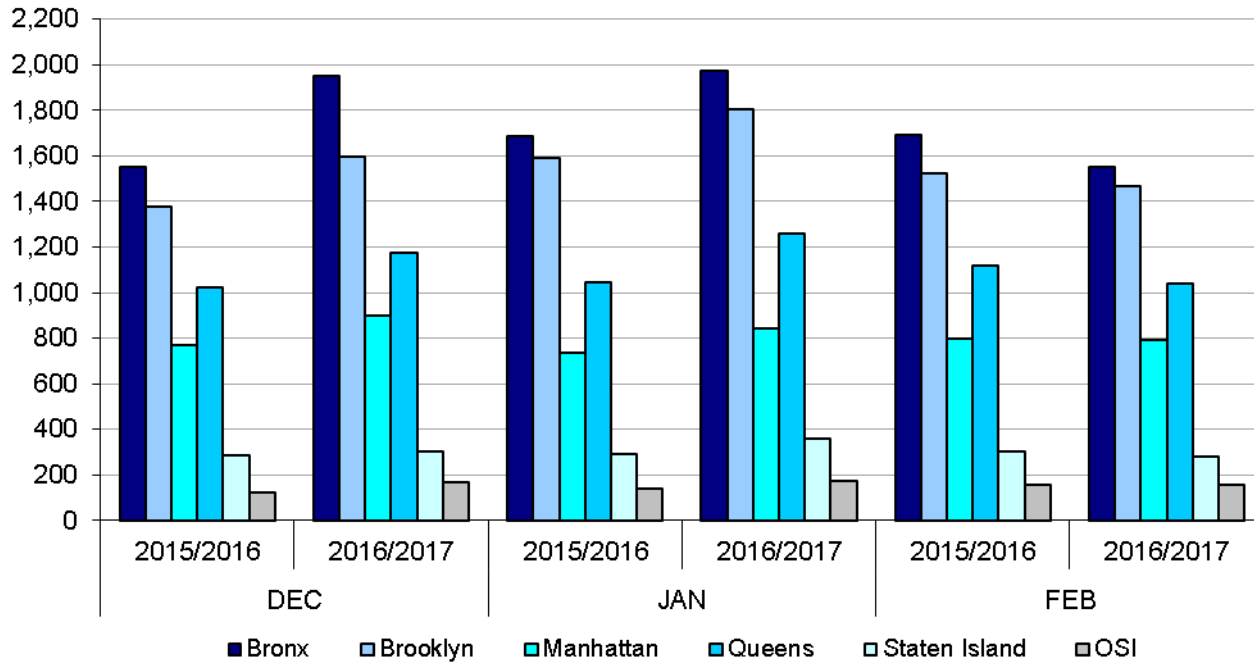


Table 1 - SCR Intake Changes by Borough, DEC 15 - FEB 16 and DEC 16 - FEB 17

Month	Year	Bronx	Brooklyn	Manhattan	Queens	Staten Island	OSI	Other	Total
DEC	2015/2016	1,552	1,377	772	1,024	285	124	143	5,277
	2016/2017	1,951	1,597	899	1,172	302	165	149	6,235
	% Change	25.7%	16.0%	16.5%	14.5%	6.0%	33.1%	4.2%	18.2%
JAN	2015/2016	1,685	1,592	737	1,047	292	140	127	5,620
	2016/2017	1,971	1,802	844	1,259	357	172	184	6,589
	% Change	17.0%	13.2%	14.5%	20.2%	22.3%	22.9%	44.9%	17.2%
FEB	2015/2016	1,549	1,295	678	1,009	267	153	134	5,085
	2016/2017	1,552	1,467	792	1,042	283	154	157	5,447
	% Change	0.2%	13.3%	16.8%	3.3%	6.0%	0.7%	17.2%	7.1%
Total	2015/2016	4,786	4,264	2,187	3,080	844	417	404	15,982
	2016/2017	5,474	4,866	2,535	3,473	942	491	490	18,271
	% Change	14.4%	14.1%	15.9%	12.8%	11.6%	17.7%	21.3%	14.3%

Figure 2: Citywide SCR Intakes by Reporter Group, DEC 15 - FEB 16 and DEC 16 - FEB 17

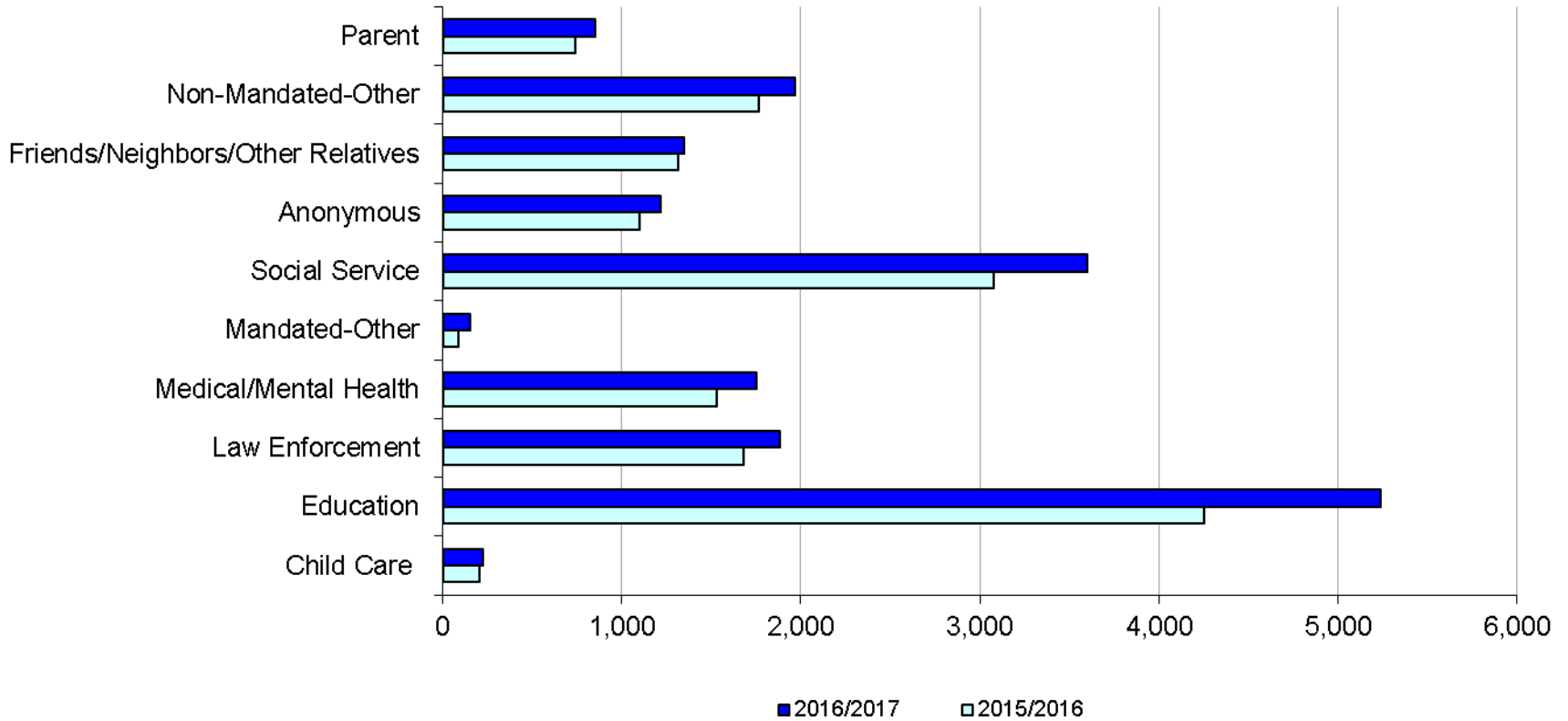
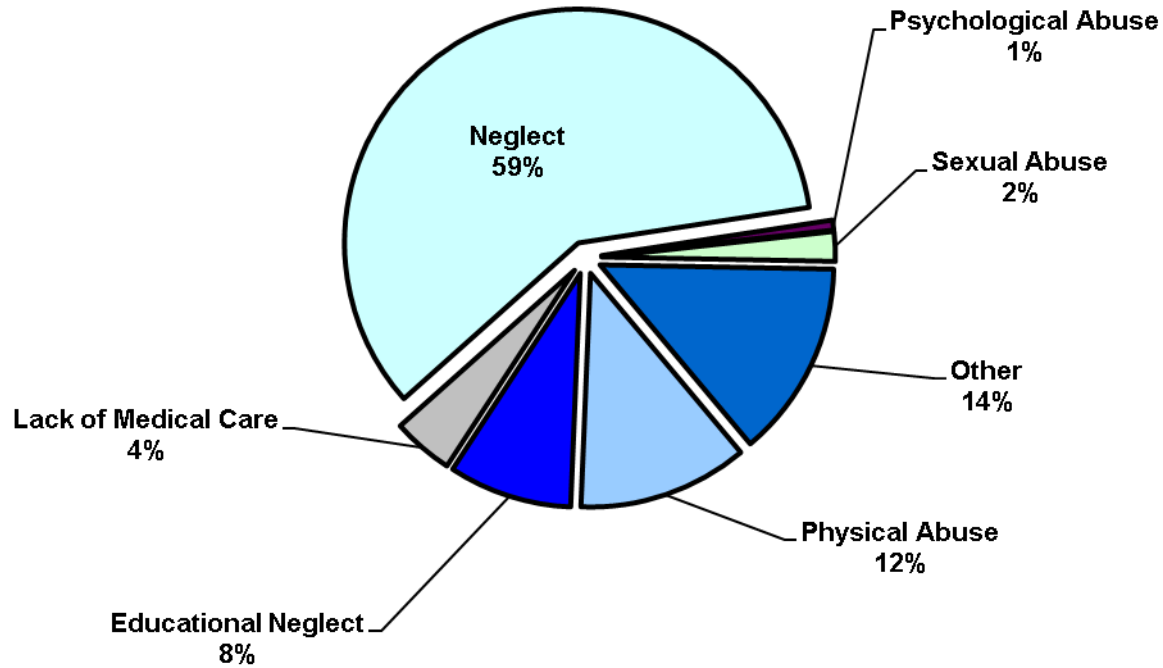


Table 2 - SCR Intakes by Reporter Group, DEC 15 – FEB 16 and DEC 16 - FEB 17

Year	Child Care/ Substitute Care Personnel	Educational Personnel	Law Enforcement	Medical/ Mental Health Personnel	Mandated- Other	Social Service Personnel	Anonymous	Friends/ Neighbors/ Other Relatives	Non- Mandated- Other	Parent	Foster Parent	Total
Bronx												
2015/2016	54	1,363	413	423	23	925	313	401	580	217	0	4,712
2016/2017	73	1,702	486	497	33	1,103	351	411	592	226	2	5,476
% Change	35.2%	24.9%	17.7%	17.5%	43.5%	19.2%	12.1%	2.5%	2.1%	4.1%	--	16.2%
Brooklyn												
2015/2016	58	1,187	487	390	19	766	324	370	429	167	2	4,199
2016/2017	46	1,418	568	456	32	880	338	389	512	228	0	4,867
% Change	-20.7%	19.5%	16.6%	16.9%	68.4%	14.9%	4.3%	5.1%	19.3%	36.5%	-100.0%	15.9%
Manhattan												
2015/2016	28	466	302	225	14	461	159	172	228	96	0	2,151
2016/2017	34	567	295	285	34	512	208	211	282	107	0	2,535
% Change	21.4%	21.7%	-2.3%	26.7%	142.9%	11.1%	30.8%	22.7%	23.7%	11.5%	--	17.9%
Queens												
2015/2016	33	916	306	296	17	591	180	243	323	117	0	3,022
2016/2017	34	1,146	327	326	27	712	195	204	362	140	0	3,473
% Change	3.0%	25.1%	6.9%	10.1%	58.8%	20.5%	8.3%	-16.0%	12.1%	19.7%	--	14.9%
Staten Island												
2015/2016	12	249	71	100	5	120	78	88	76	28	0	827
2016/2017	14	320	91	89	9	149	78	77	75	40	0	942
% Change	16.7%	28.5%	28.2%	-11.0%	80.0%	24.2%	0.0%	-12.5%	-1.3%	42.9%	--	13.9%
OSI												
2015/2016	20	35	29	42	6	80	26	19	85	60	4	406
2016/2017	24	42	26	41	12	96	34	28	105	82	1	491
% Change	20.0%	20.0%	-10.3%	-2.4%	100.0%	20.0%	30.8%	47.4%	23.5%	36.7%	-75.0%	20.9%
Other												
2015/2016	1	36	75	55	3	133	22	21	44	54	0	444
2016/2017	3	44	91	56	4	145	12	25	41	30	0	451
% Change	200.0%	22.2%	21.3%	1.8%	33.3%	9.0%	-45.5%	19.0%	-6.8%	-44.4%	--	1.6%
Citywide												
2015/2016	206	4,252	1,683	1,531	87	3,076	1,102	1,314	1,765	739	6	15,761
2016/2017	228	5,239	1,884	1,750	151	3,597	1,216	1,345	1,969	853	3	18,235
% Change	10.7%	23.2%	11.9%	14.3%	73.6%	16.9%	10.3%	2.4%	11.6%	15.4%	-50.0%	15.7%

Figure 3: SCR Allegations, DEC 16 – FEB 17



Total Allegations = 45,506

Allegations are grouped as follows: Physical Abuse - burn, fatality, fracture, choking, twisting, shaking, excessive corporal punishment, internal injuries, lacerations, bruises, welts, poisoning, noxious substances; Educational Neglect – educational neglect; Lack of Medical Care – lack of medical care; Neglect - inadequate guardianship, inadequate food, clothing, shelter, lack of supervision, malnutrition, failure to thrive, swelling, dislocations, sprains; Psychological Abuse - isolation, emotional neglect; Sexual Abuse – sexual abuse; and Other -parental drug use, child drug use, abandonment, inappropriate custodial conduct.

Table 3 - SCR Allegations, DEC 15 - FEB 16 and DEC 16 - FEB 17

Year	Physical Abuse	Educational Neglect	Lack of Medical Care	Neglect	Psychological Abuse	Sexual Abuse	Other	Total
Bronx								
2015/2016	1,457	1,263	539	7,472	69	199	1,697	12,696
2016/2017	1,526	1,487	669	8,370	93	281	1,842	14,268
% Change	4.7%	17.7%	24.1%	12.0%	34.8%	41.2%	8.5%	12.4%
Brooklyn								
2015/2016	1,299	1,017	448	6,587	57	225	1,304	10,937
2016/2017	1,453	1,066	466	7,154	74	253	1,564	12,030
% Change	11.9%	4.8%	4.0%	8.6%	29.8%	12.4%	19.9%	10.0%
Manhattan								
2015/2016	536	328	197	2714	23	101	656	4,555
2016/2017	589	445	260	3279	42	120	812	5,547
% Change	9.9%	35.7%	32.0%	20.8%	82.6%	18.8%	23.8%	21.8%
Queens								
2015/2016	986	429	271	4,018	48	175	1,016	6,943
2016/2017	1,103	573	332	4,807	71	126	1,125	8,137
% Change	11.9%	33.6%	22.5%	19.6%	47.9%	-28.0%	10.7%	17.2%
Staten Island								
2015/2016	299	172	84	1,310	13	40	381	2,299
2016/2017	307	203	88	1,502	21	46	470	2,637
% Change	2.7%	18.0%	4.8%	14.7%	61.5%	15.0%	23.4%	14.7%
OSI								
2015/2016	244	40	60	1,038	10	84	151	1,627
2016/2017	264	58	54	1,225	4	74	176	1,855
% Change	8.2%	45.0%	-10.0%	18.0%	-60.0%	-11.9%	16.6%	14.0%
Other								
2015/2016	112	37	36	601	8	26	220	1,040
2016/2017	113	54	44	587	9	29	196	1,032
% Change	0.9%	45.9%	22.2%	-2.3%	12.5%	11.5%	-10.9%	-0.8%
Citywide								
2015/2016	4,933	3,286	1,635	23,740	228	850	5,425	40,097
2016/2017	5,355	3,886	1,913	26,924	314	929	6,185	45,506
% Change	8.6%	18.3%	17.0%	13.4%	37.7%	9.3%	14.0%	13.5%

**TABLE 4 - Child Welfare Preventive Cases
Opened and Closed
January 2014 to February 2017**

Month	Opened Cases	Closed Cases
2014		
Jan-14	841	761
Feb-14	885	785
Mar-14	998	1,009
Apr-14	919	1,059
May-14	919	1,056
Jun-14	890	899
Jul-14	973	1,236
Aug-14	826	1,189
Sep-14	841	878
Oct-14	835	1,035
Nov-14	677	887
Dec-14	1,062	927
2015		
Jan-15	728	882
Feb-15	902	836
Mar-15	1,122	932
Apr-15	977	1,023
May-15	914	1,084
Jun-15	1,068	997
Jul-15	899	1,298
Aug-15	893	1,128
Sep-15	764	1,040
Oct-15	749	986
Nov-15	746	881
Dec-15	1,013	982
2016		
Jan-16	792	851
Feb-16	897	872
Mar-16	1,029	1,065
Apr-16	836	978
May-16	890	1,049
Jun-16	996	1,015
Jul-16	842	1,126
Aug-16	897	1,087
Sep-16	821	908
Oct-16	776	696
Nov-16	728	558
Dec-16	816	531
2017		
Jan-17	548	474
Feb-17	594	906

**Table 5 - Referrals to Child Welfare Preventive Services by Source
January 2014 to February 2017**

Month	Total Referrals	Division of Child Protection	Foster Care Agencies	PPRS Transfer	School	Self	Other Sources*
2014							
Jan-14	1,537	70.0%	1.2%	6.6%	2.3%	5.8%	14.2%
Feb-14	1,334	69.7%	0.8%	8.4%	1.7%	5.5%	13.9%
Mar-14	1,612	70.0%	1.4%	8.6%	1.6%	5.3%	13.1%
Apr-14	1,525	70.2%	0.9%	7.6%	2.1%	3.7%	15.4%
May-14	1,580	74.4%	0.7%	8.3%	1.4%	5.2%	10.0%
Jun-14	1,550	78.6%	1.2%	6.3%	1.2%	3.2%	9.4%
Jul-14	1,659	79.6%	1.5%	6.7%	0.4%	4.2%	7.6%
Aug-14	1,395	72.2%	1.6%	10.8%	0.3%	4.9%	10.3%
Sep-14	1,597	49.4%	1.5%	7.6%	0.3%	4.5%	36.8%
Oct-14	1,634	68.2%	1.9%	10.0%	1.2%	4.6%	14.1%
Nov-14	1,311	66.4%	0.9%	14.3%	2.4%	3.9%	12.1%
Dec-14	1,785	71.1%	1.4%	8.8%	2.9%	4.8%	11.0%
CY 2014	18,519	70.1%	1.3%	8.6%	1.5%	4.6%	14.0%
2015							
Jan-15	1,430	74.4%	1.6%	8.7%	1.8%	3.8%	9.7%
Feb-15	1,538	76.5%	0.8%	8.1%	1.8%	4.7%	8.2%
Mar-15	1,798	74.6%	0.9%	7.3%	1.6%	4.8%	10.8%
Apr-15	1,719	78.2%	1.3%	7.2%	0.6%	3.5%	9.1%
May-15	1,561	77.2%	1.0%	5.1%	1.5%	4.5%	10.8%
Jun-15	1,716	77.4%	1.1%	7.7%	1.2%	3.5%	9.1%
Jul-15	1,511	79.6%	0.9%	7.2%	0.3%	3.8%	8.2%
Aug-15	1,418	79.3%	2.2%	7.8%	0.2%	3.1%	7.5%
Sep-15	1,209	72.1%	2.8%	10.4%	0.5%	5.5%	8.6%
Oct-15	1,338	70.4%	1.9%	8.3%	2.1%	5.8%	11.6%
Nov-15	1,220	68.2%	1.8%	9.6%	1.4%	6.2%	12.8%
Dec-15	1,526	73.5%	1.6%	8.0%	2.0%	5.0%	9.9%
2016							
Jan-16	1,370	73.6%	1.6%	8.2%	0.7%	5.4%	10.6%
Feb-16	1,436	75.8%	2.2%	7.8%	1.0%	3.8%	9.3%
Mar-16	1,557	72.0%	2.1%	8.8%	1.0%	4.6%	11.4%
Apr-16	1,378	76.1%	1.5%	7.4%	1.5%	3.5%	10.0%
May-16	1,386	73.4%	1.4%	8.7%	1.0%	4.7%	10.8%
Jun-16	1,564	77.2%	2.4%	6.2%	1.5%	4.1%	8.6%
Jul-16	1,338	80.3%	1.7%	6.4%	1.0%	4.2%	6.4%
Aug-16	1,385	79.1%	1.8%	7.1%	0.4%	4.0%	7.6%
Sep-16	1,297	77.8%	2.1%	7.5%	0.8%	4.5%	7.4%
Oct-16	1,247	70.1%	2.0%	7.6%	1.5%	5.9%	12.9%
Nov-16	1,229	67.8%	2.0%	7.8%	1.2%	5.5%	15.8%
Dec-16	1,175	76.0%	1.5%	7.1%	1.3%	3.8%	10.3%
2017							
Jan-17	1,047	78.4%	1.4%	6.7%	0.8%	3.1%	9.6%
Feb-17	1,065	79.1%	0.6%	7.0%	0.8%	3.5%	9.1%

*Other Community Sources includes the Department of Homeless Services, Family Court, FAP, Hospitals and Medical facilities, the NYC Housing Authority, Probation, and Sponsor Agencies.