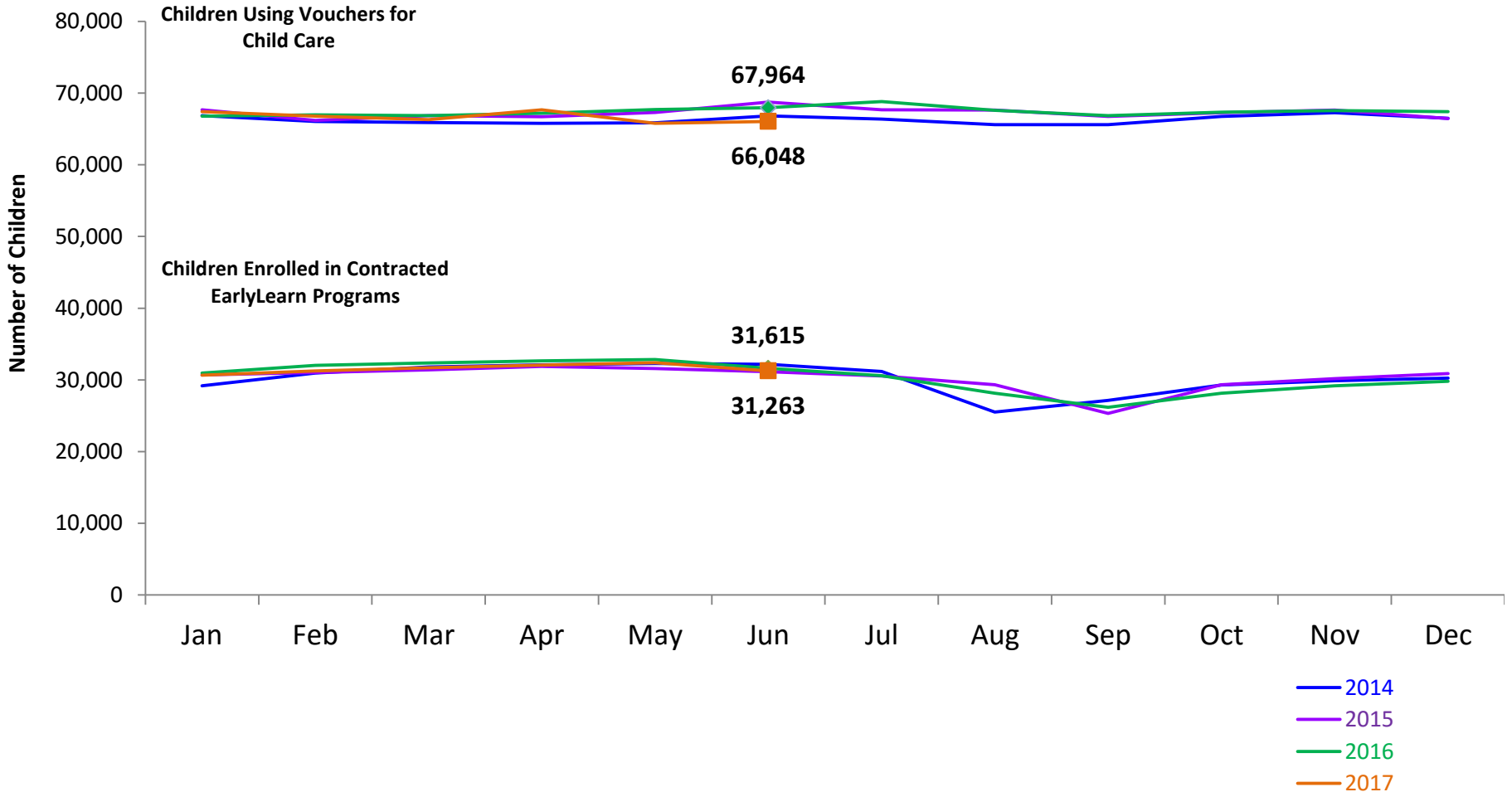




Flash

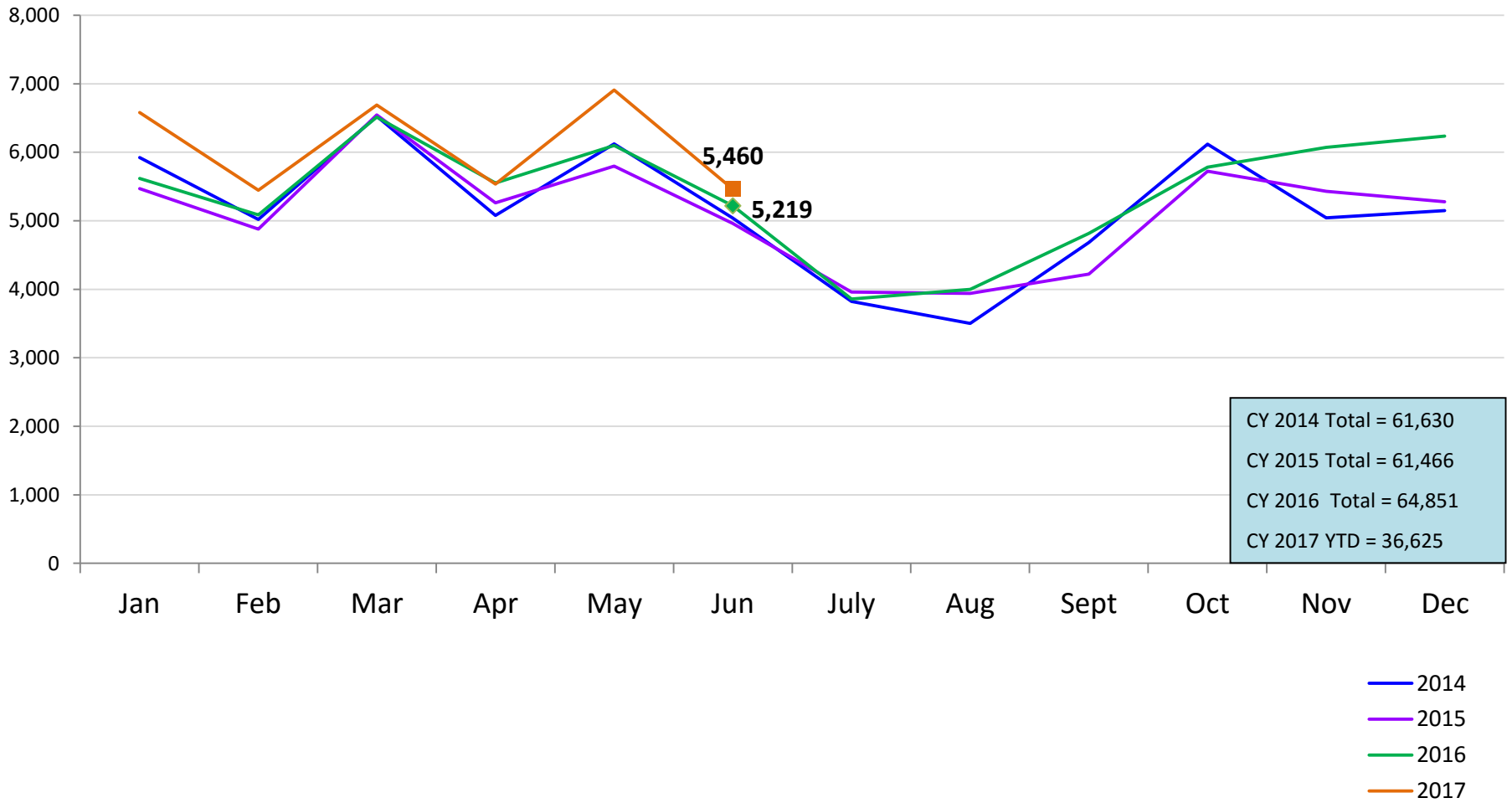
July 2017

Children Enrolled in Contracted EarlyLearn Programs and Children Using Vouchers for Child Care January 2014 – June 2017(End of Month)



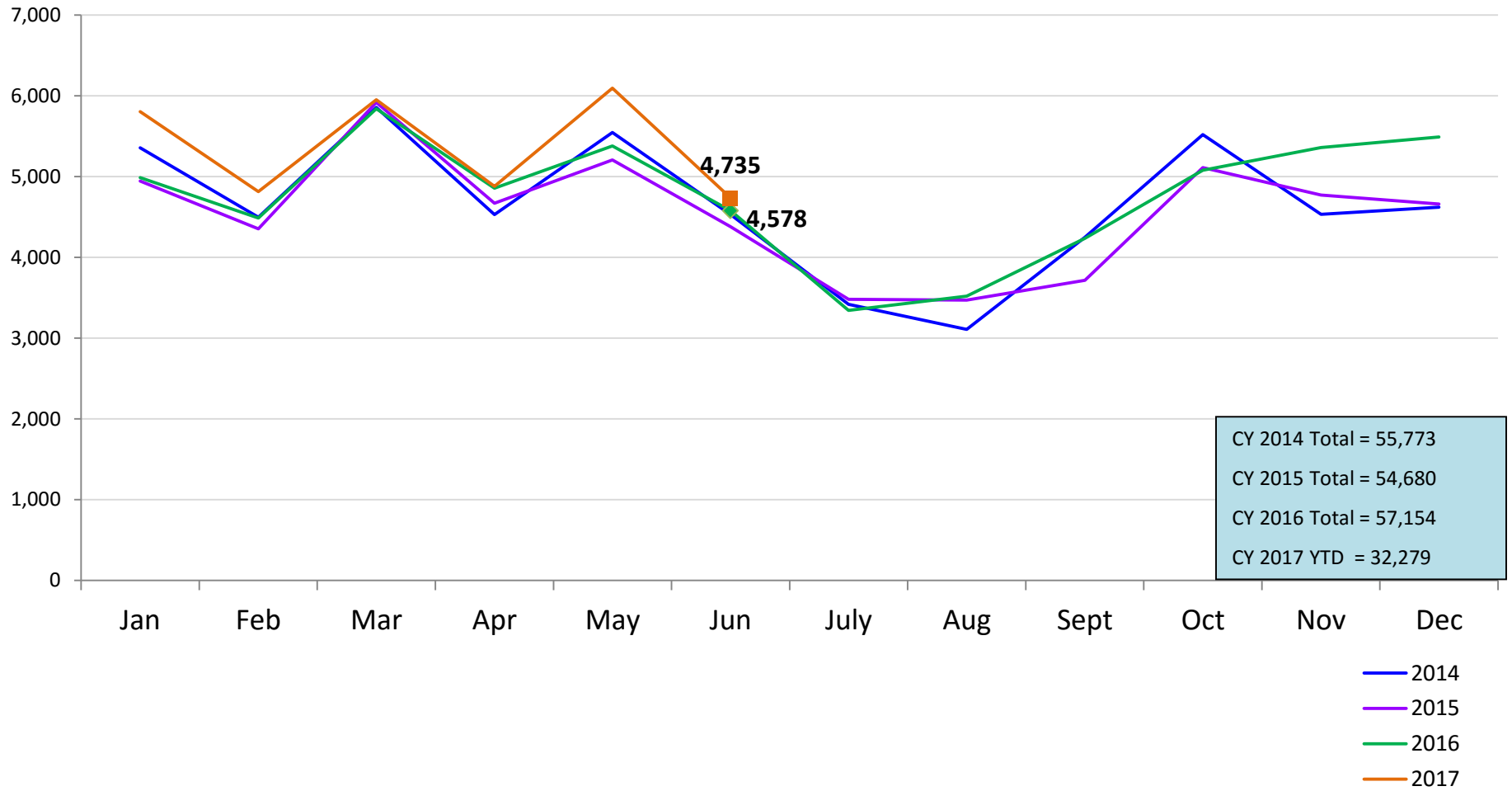
SCR Intakes

January 2014 – June 2017 (Monthly Total)



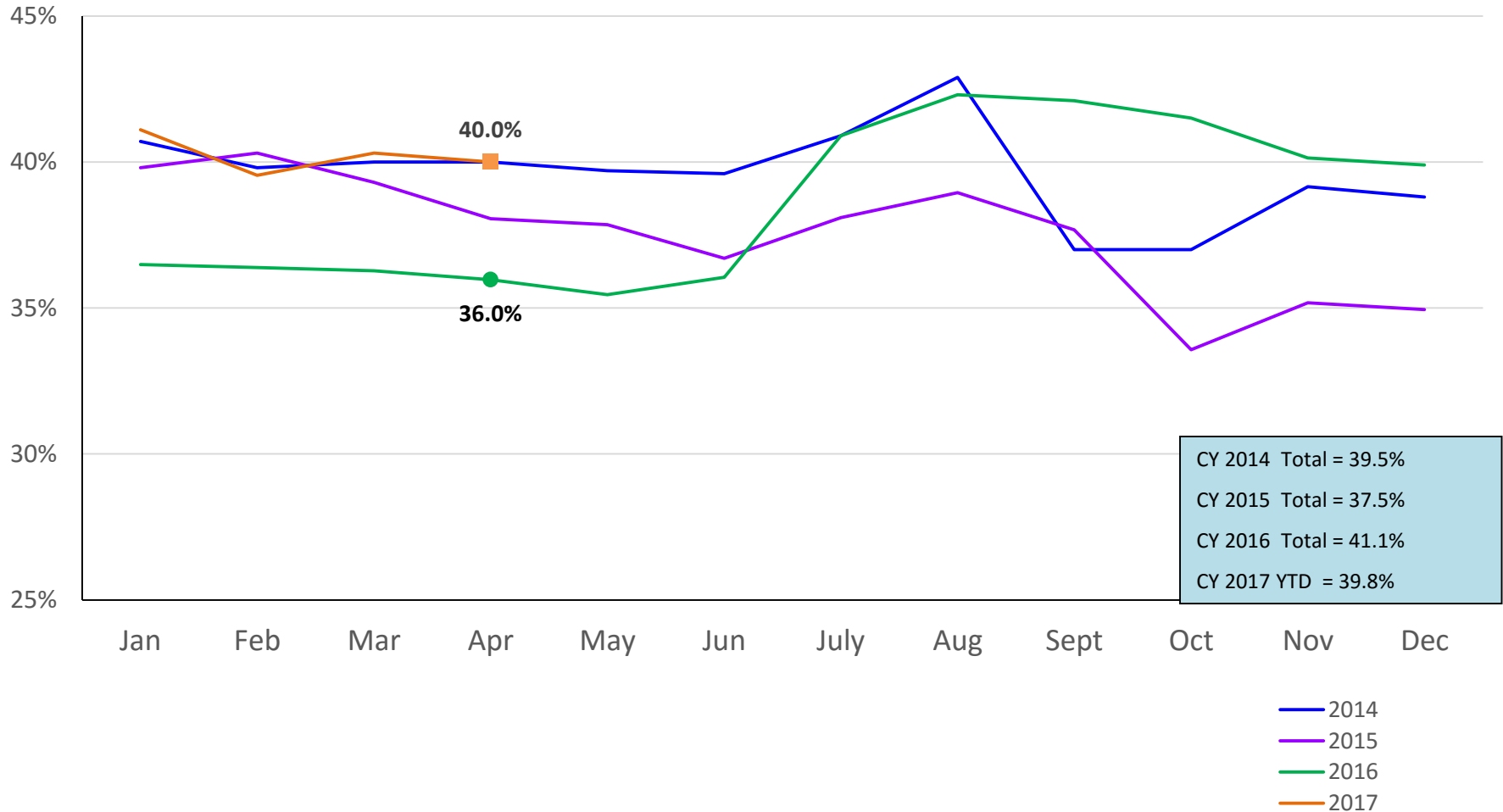
SCR Consolidated Investigations

January 2014 – June 2017 (Monthly Total)



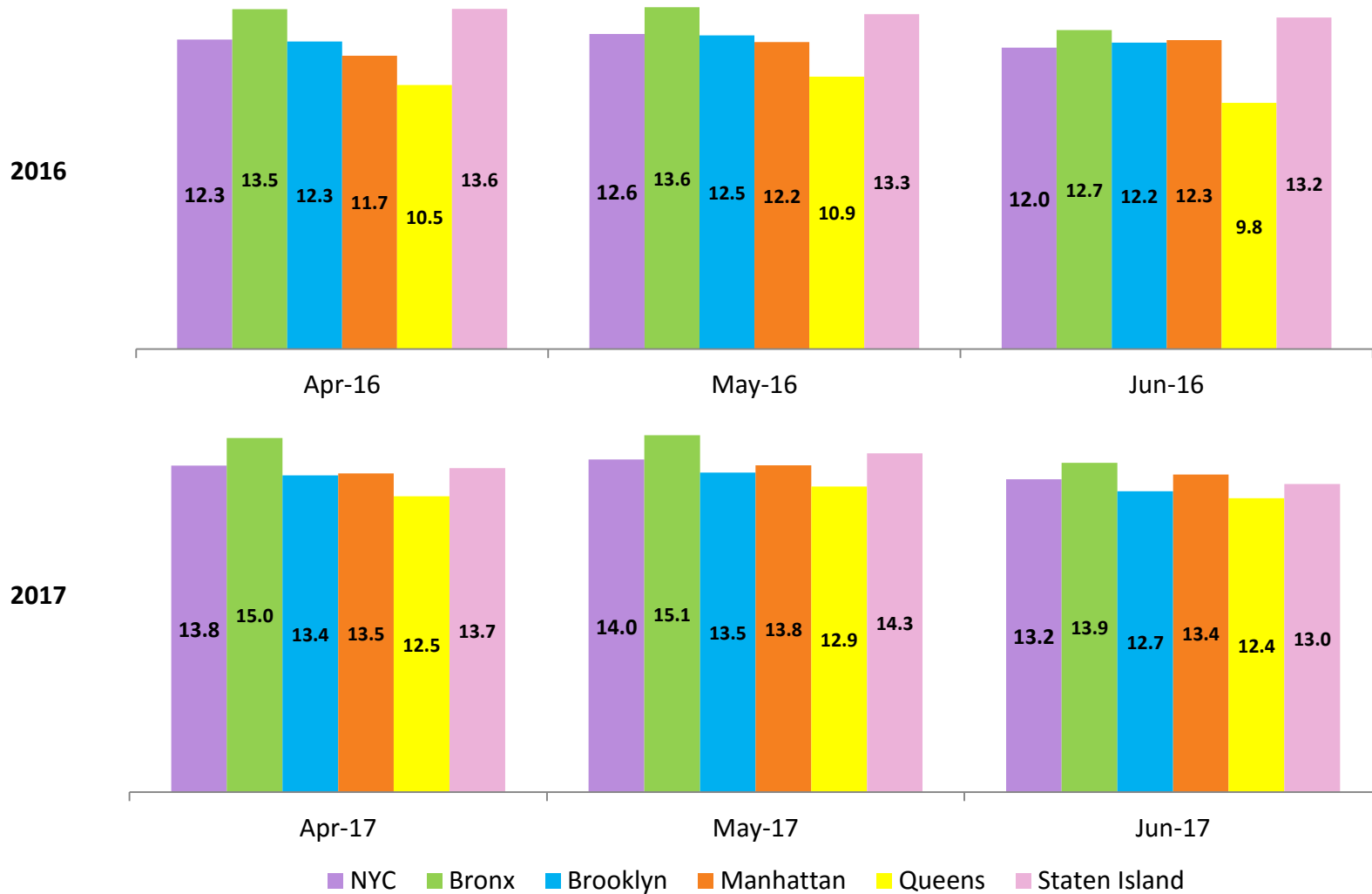
SCR Investigation Indication Rate

January 2014 – April 2017



Average P/D Combined Caseload*

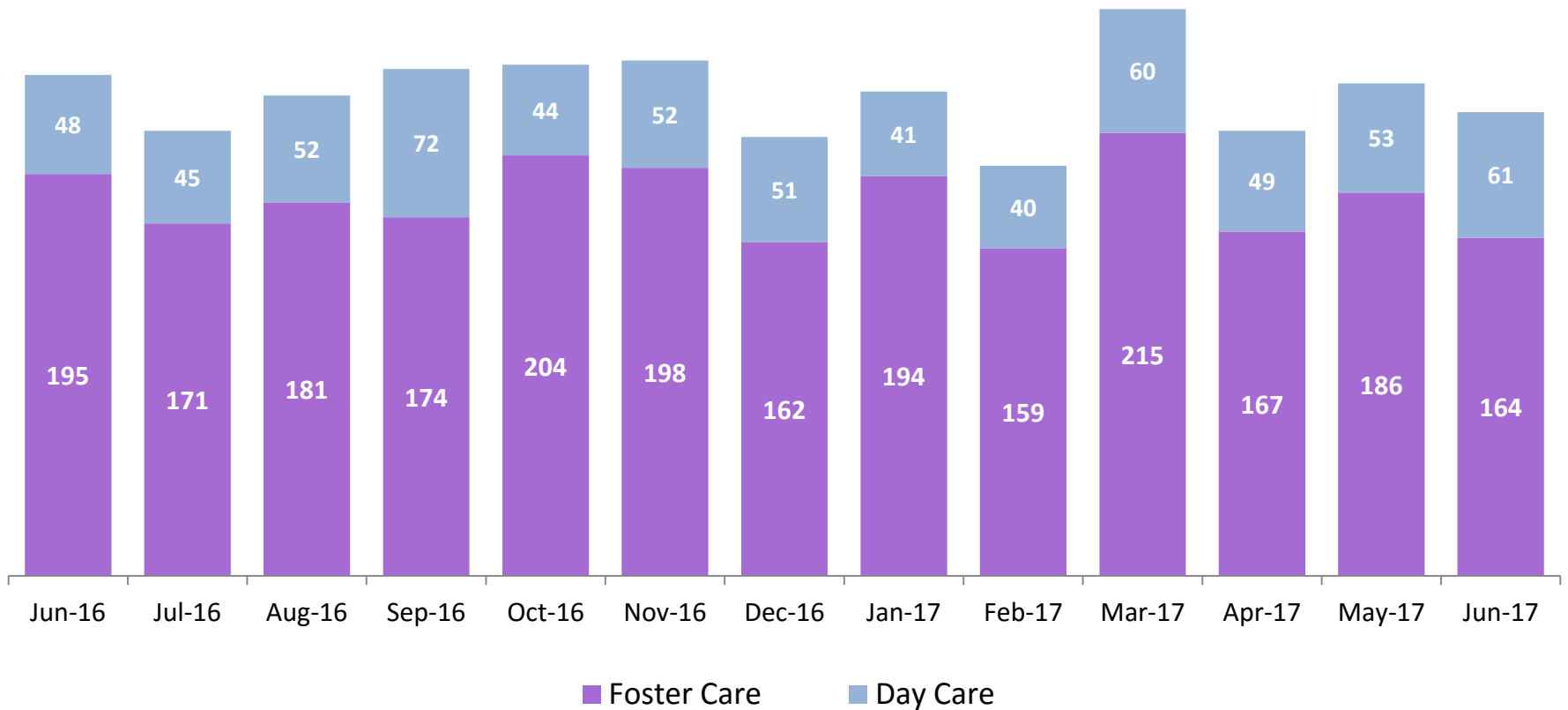
April – June 2016 & April – June 2017



* Caseloads are of protective/diagnostic caseworkers only and exclude the caseloads carried by Level I and Level II Supervisors.

OSI Investigations

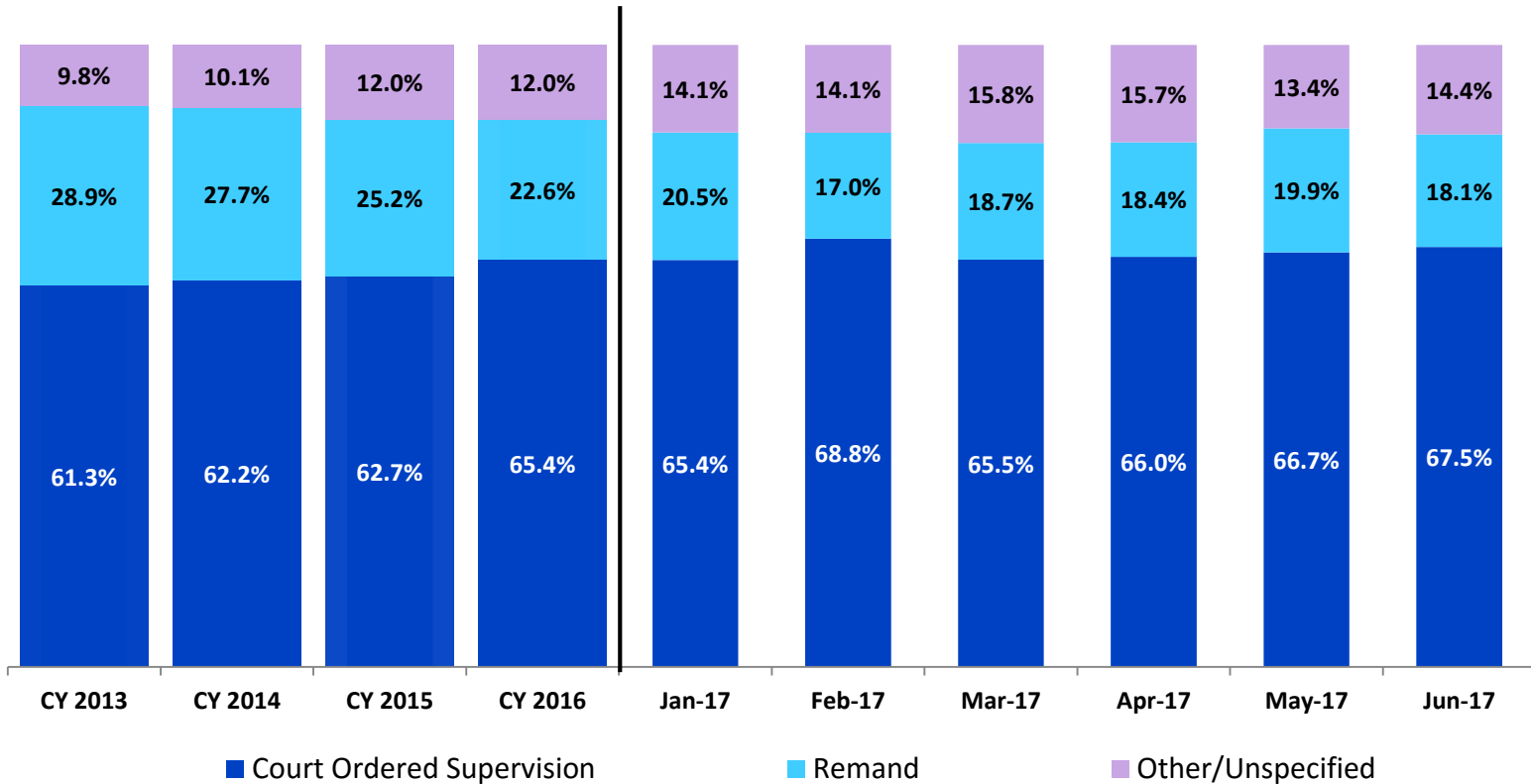
June 2016 – June 2017



	Jun 2016	Jul 2016	Aug 2016	Sep 2016	Oct 2016	Nov 2016	Dec 2016	Jan 2017	Feb 2017	Mar 2017	Apr 2017	May 2017	June 2017
Number of Investigations	243	216	233	246	248	250	213	235	199	275	216	239	225

Article 10 Filings and Initial Hearing Outcomes, Children

CY 2013 – June 2017

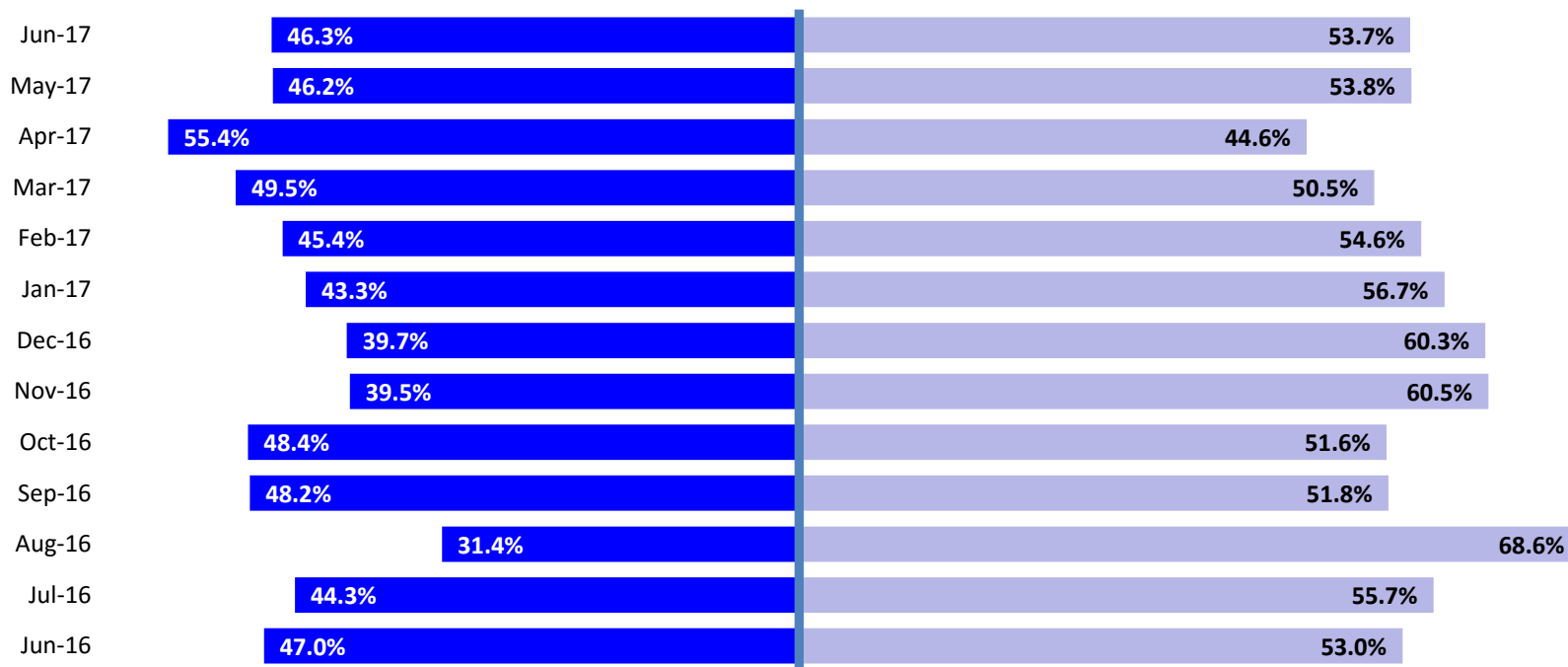


	CY 2013	CY 2014	CY 2015	CY 2016	Jan 2017	Feb 2017	Mar 2017	April 2017	May 2017	June 2017
Children with Article 10 Filings	9,318	9,900	10,243	11,453	1,354	1,139	1,553	1,307	1,533	1,500

Note: The category "Other/Unspecified" includes released with no supervision, no order issued and no outcome specified.

Remands Approved at Initial Article X Hearing by Removal Status

June 2016 – June 2017

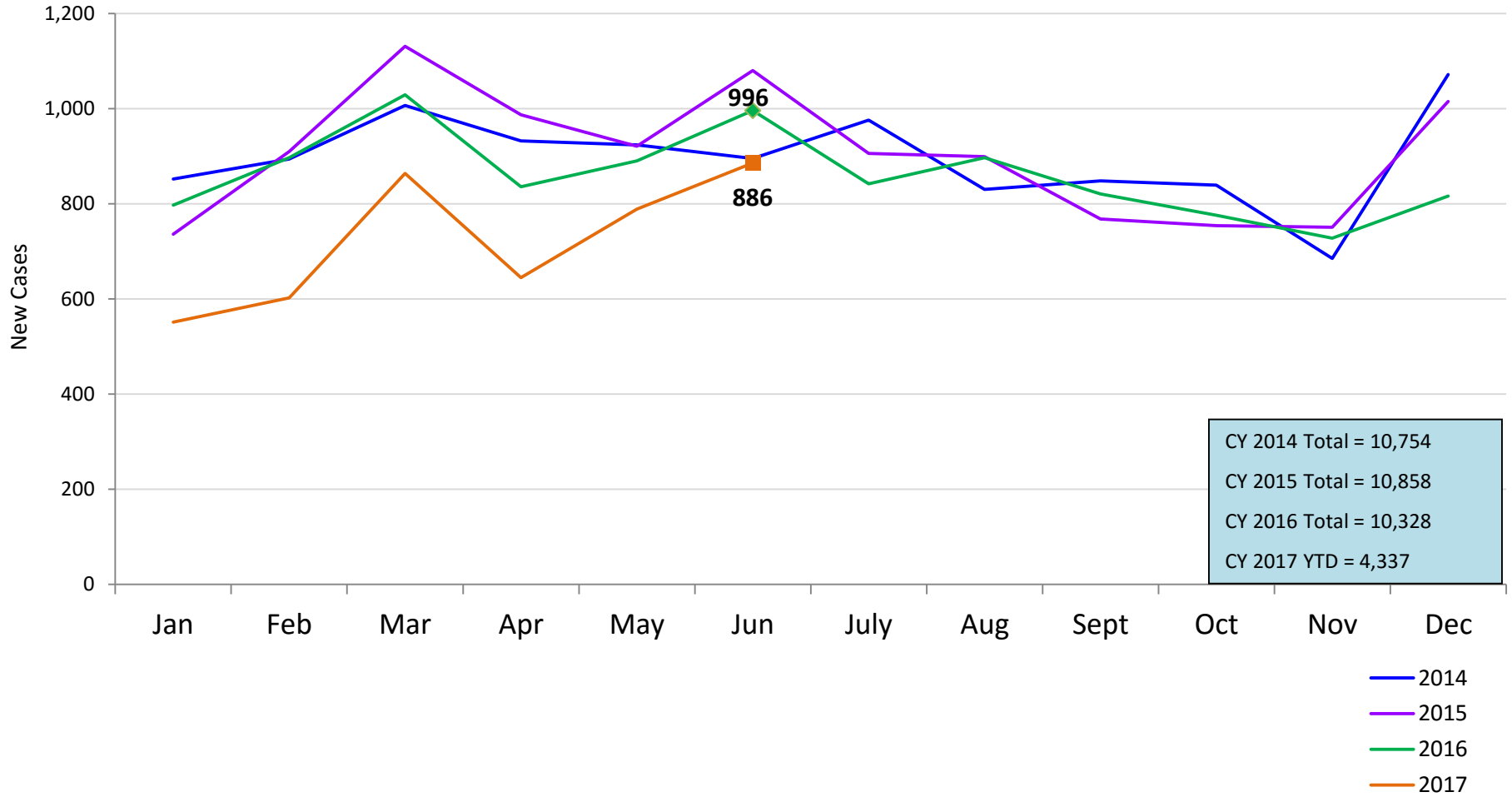


■ Pre-Filing Emergency Removals (court approved at initial hearing) ■ Post-Filing Removals (court ordered at initial hearing)

	June 2016	July 2016	Aug 2016	Sep 2016	Oct 2016	Nov 2016	Dec 2016	Jan 2017	Feb 2017	Mar 2017	Apr 2017	May 2017	June 2017
Children Removed	183	210	204	199	312	223	287	277	194	291	240	305	272

New Child Welfare Preventive Cases*

January 2014 – June 2017



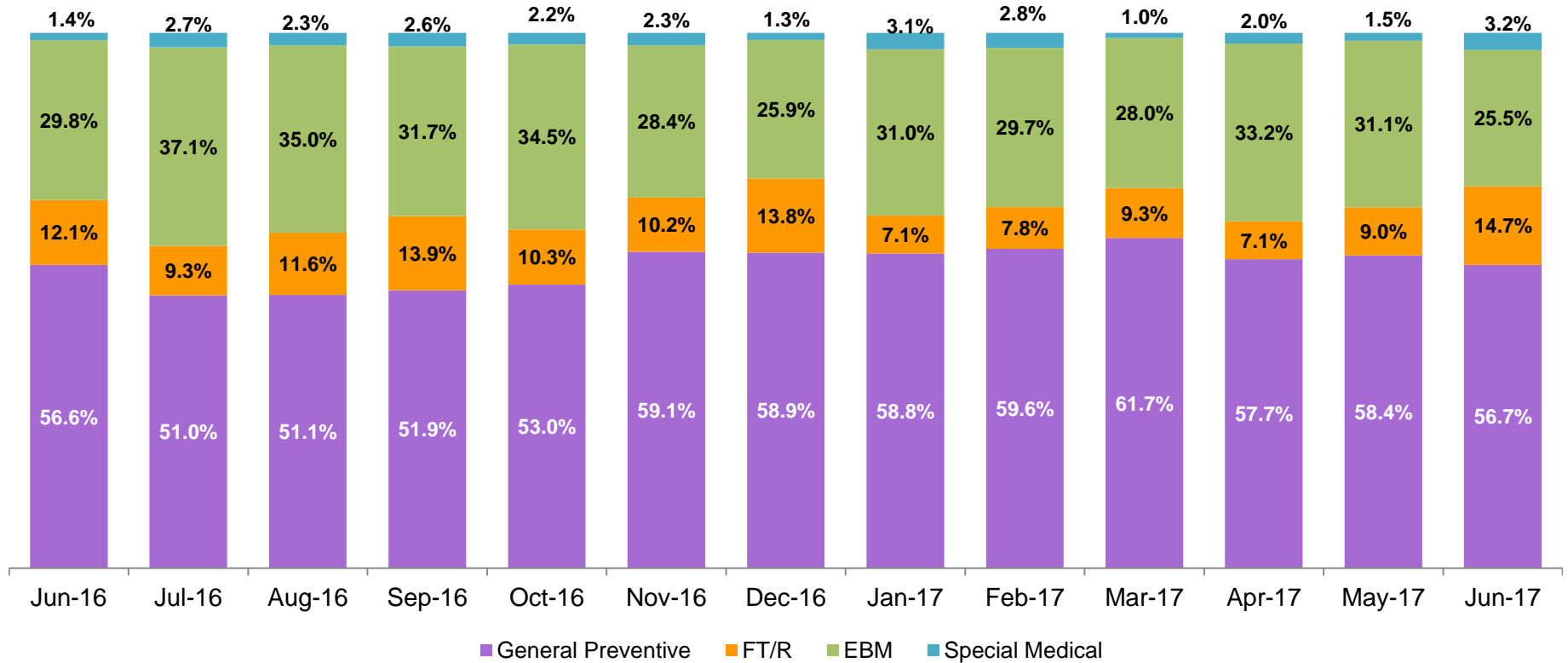
CY 2014 Total = 10,754
 CY 2015 Total = 10,858
 CY 2016 Total = 10,328
 CY 2017 YTD = 4,337

— 2014
 — 2015
 — 2016
 — 2017

* New preventive cases do not include cases transferred from one preventive program to another. See Pages 33 and 34 of the Appendix for supporting data.

New Child Welfare Preventive Cases by Program Type *

June 2016 – June 2017

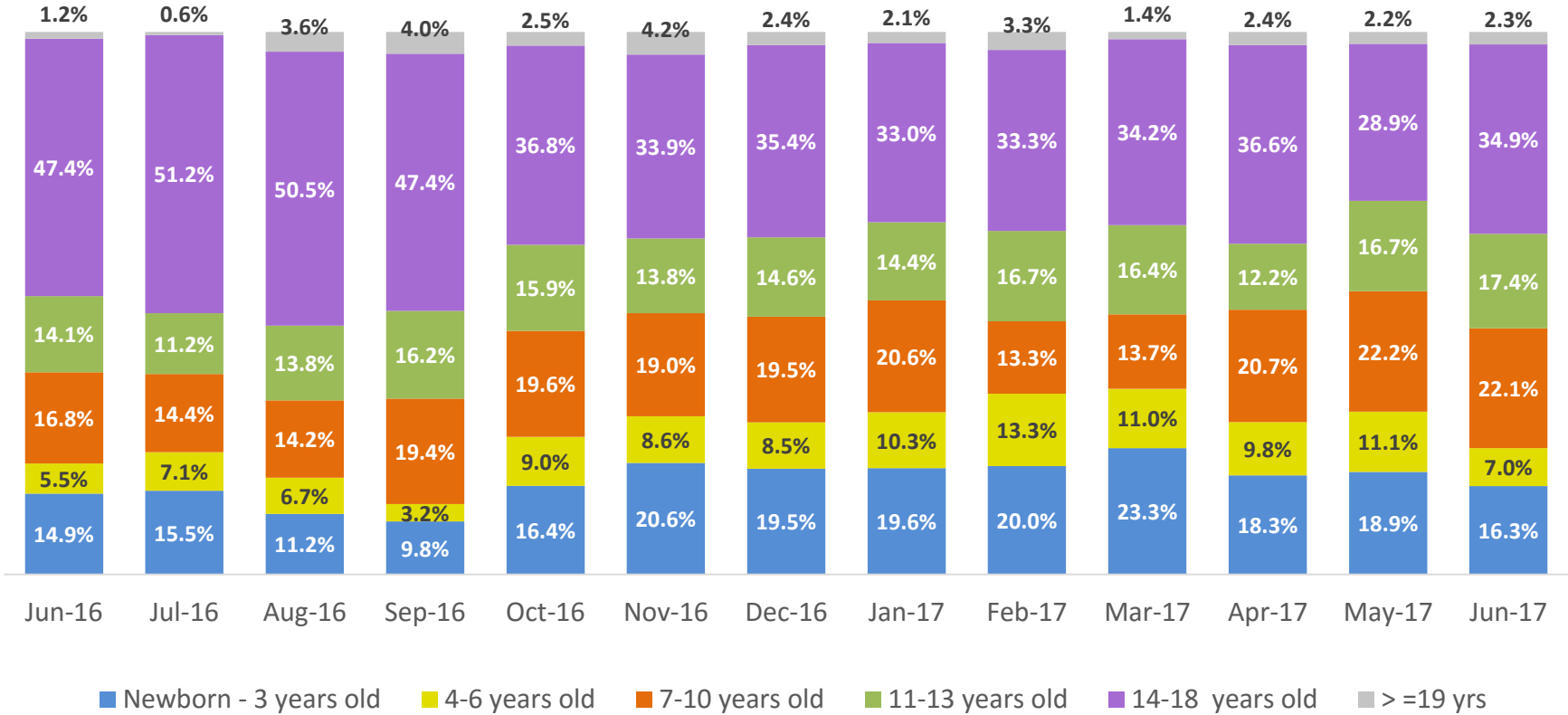


	June 2016	July 2016	Aug 2016	Sep 2016	Oct 2016	Nov 2016	Dec 2016	Jan 2017	Feb 2017	Mar 2017	Apr 2017	May 2017	June 2017
Number of New Preventive Cases	996	842	897	821	776	728	816	551	602	864	645	789	886

* New preventive cases exclude cases transferred from one preventive program to another.

Average Daily Children’s Center Population

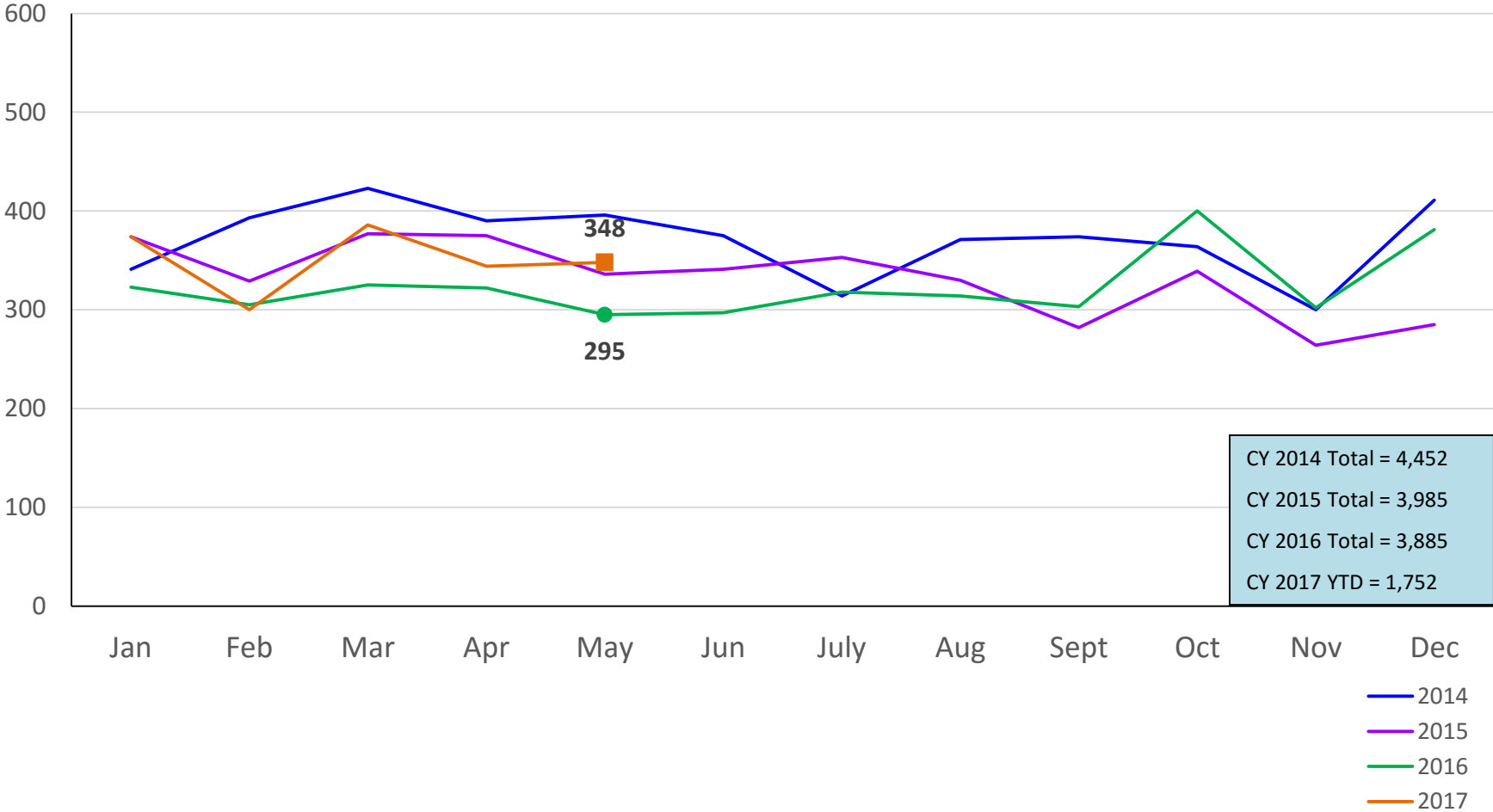
June 2016 – June 2017



	Jun 2016	Jul 2016	Aug 2016	Sep 2016	Oct 2016	Nov 2016	Dec 2016	Jan 2017	Feb 2017	Mar 2017	Apr 2017	May 2017	June 2017
Average Number of Children	40	50	56	54	71	62	82	97	60	73	82	90	86

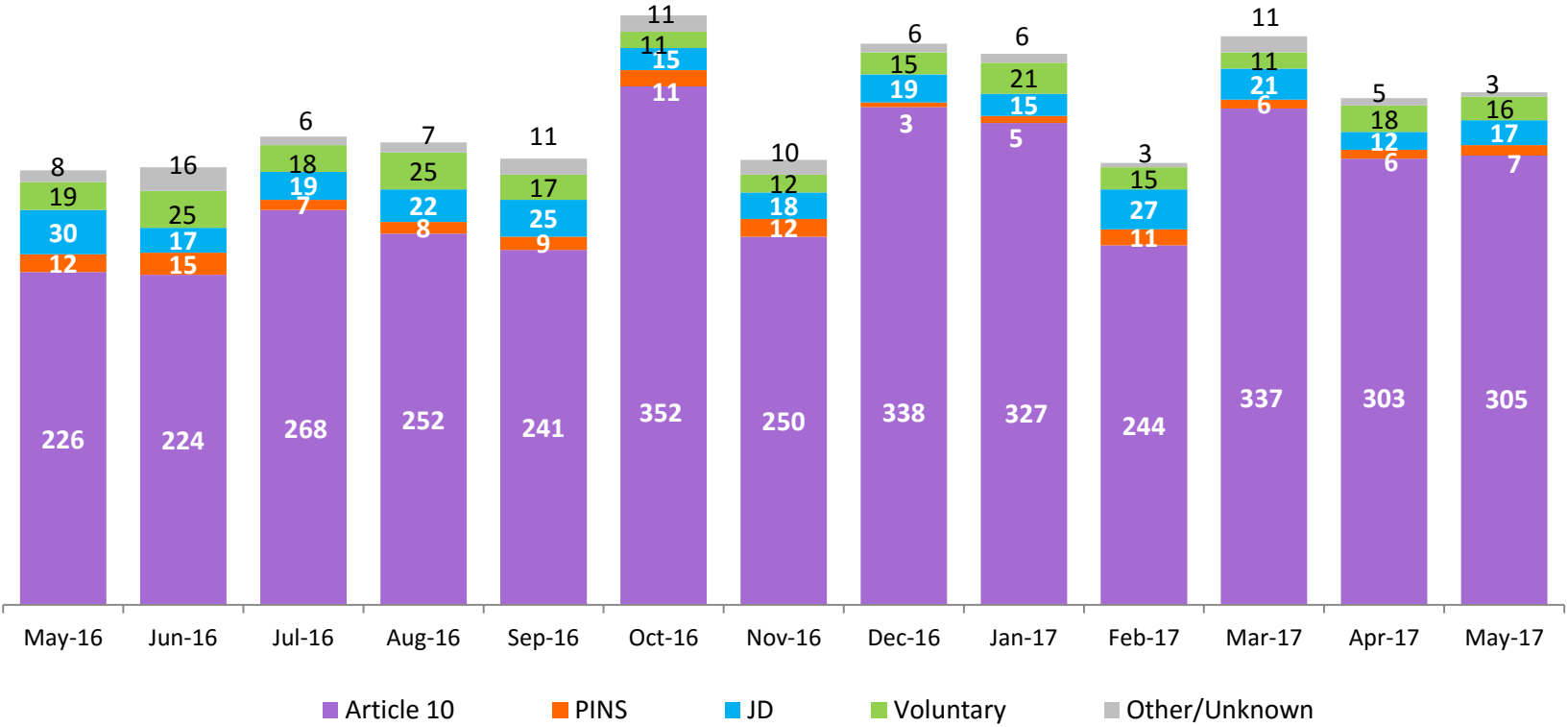
New Monthly Placements of Children into Foster Care

January 2014 – May 2017



Reason for New Placements of Children into Foster Care

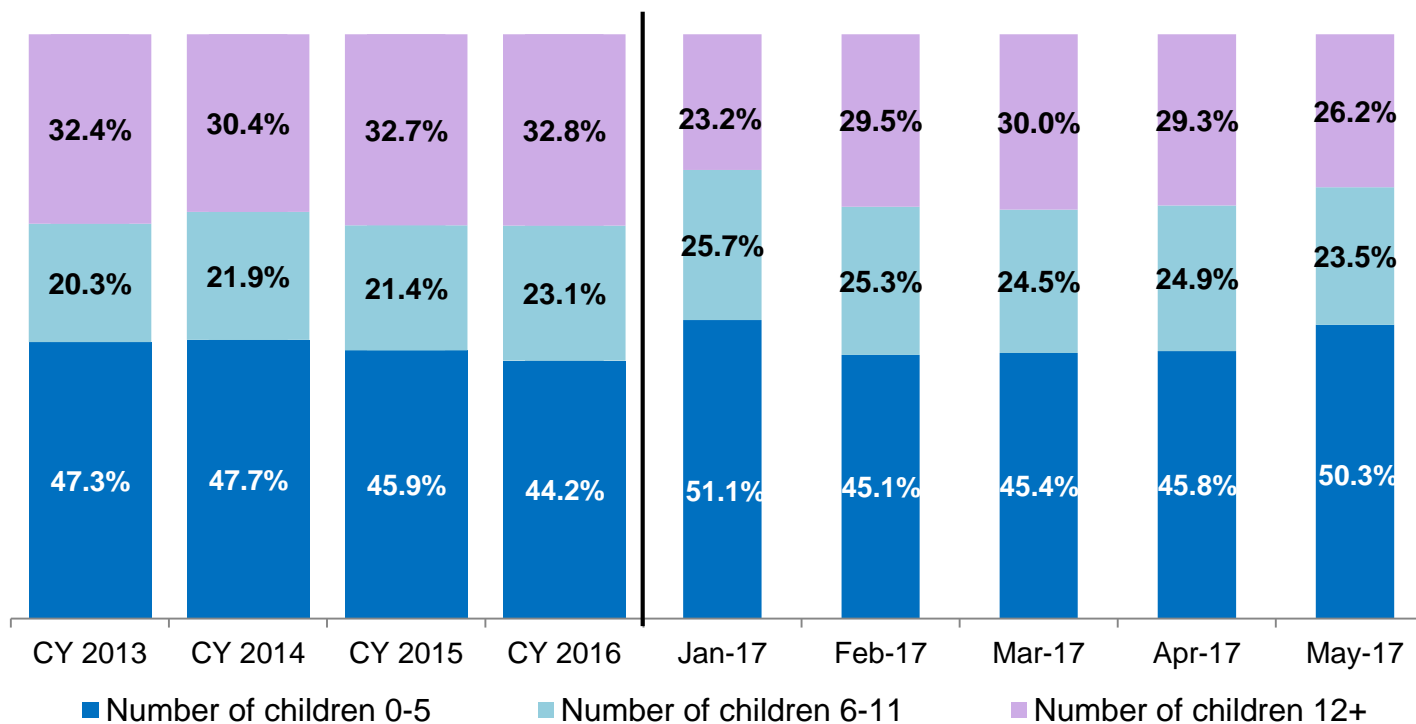
May 2016 – May 2017



	May 2016	Jun 2016	Jul 2016	Aug 2016	Sep 2016	Oct 2016	Nov 2016	Dec 2016	Jan 2017	Feb 2017	Mar 2017	Apr 2017	May 2017
Number of Placements	295	297	318	314	303	400	302	381	374	300	386	344	348

New Placements of Children into Foster Care* by Age

CY 2013 - May 2017

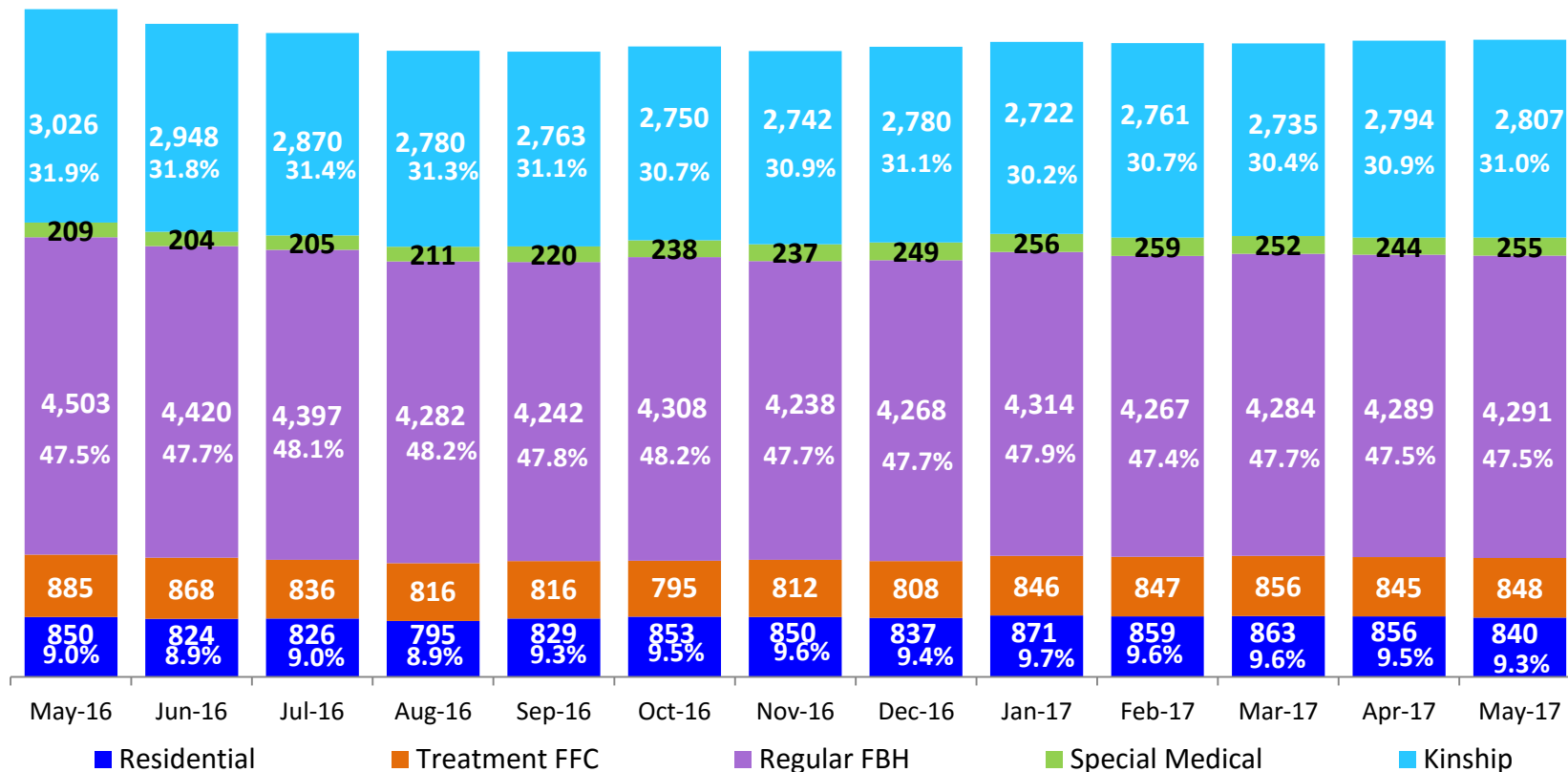


	CY 2013	CY 2014	CY 2015	CY 2016	Jan 2017	Feb 2017	Mar 2017	Apr 2017	May 2017
Number of Placements	4,283	4,160	3,760	3,648	359	273	365	332	331

*Excludes CTH placements.

Children in Foster Care *

May 2016 – May 2017 (end of month)

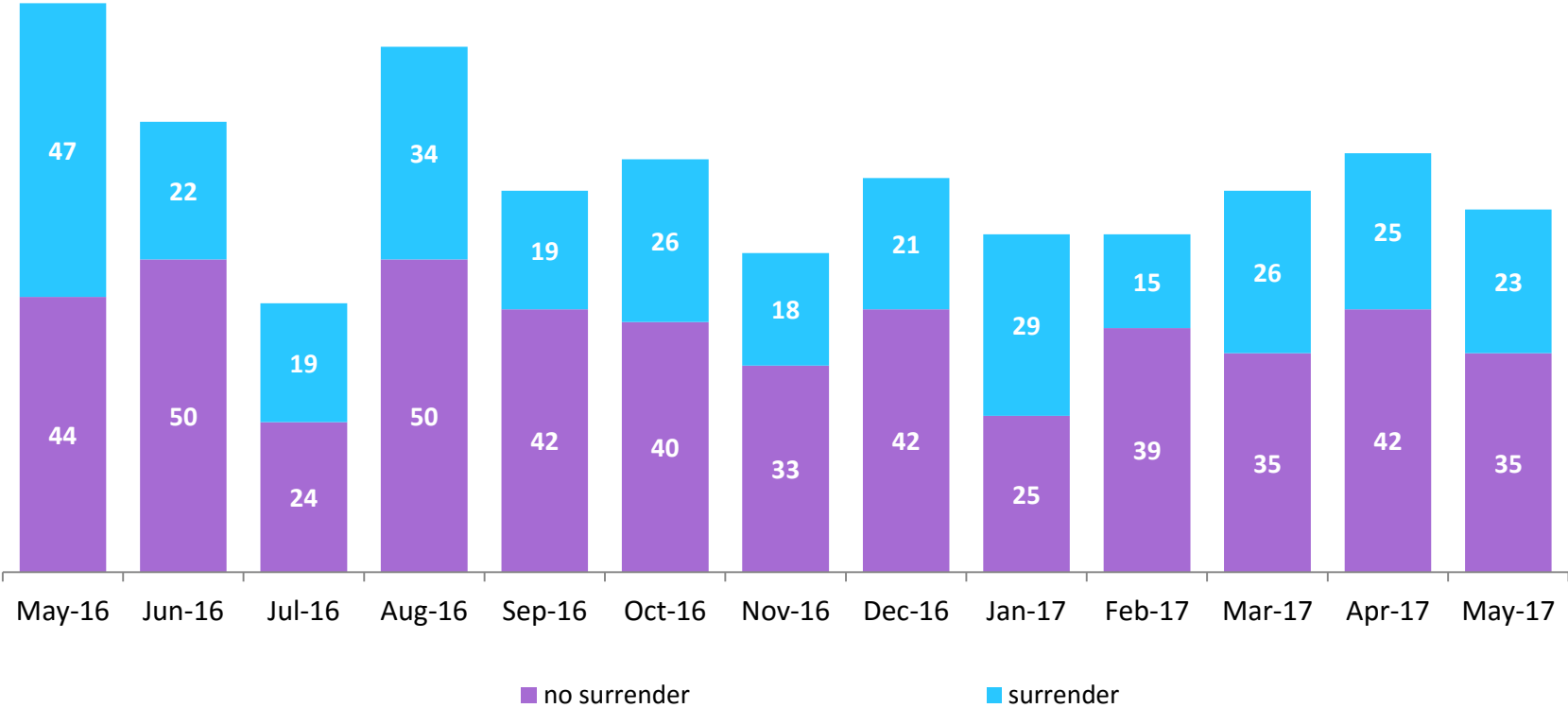


	May 2016	Jun 2016	Jul 2016	Aug 2016	Sep 2016	Oct 2016	Nov 2016	Dec 2016	Jan 2017	Feb 2017	Mar 2017	Apr 2017	May 2017
Number in Foster Care	9,473	9,264	9,134	8,884	8,870	8,944	8,879	8,942	9,009	8,993	8,990	9,028	9,041

*Excludes JD placements and includes children in 24 hour care and approximately 200 young children who are living in foster homes or residential care facilities with their mothers who are in foster care (8D children).

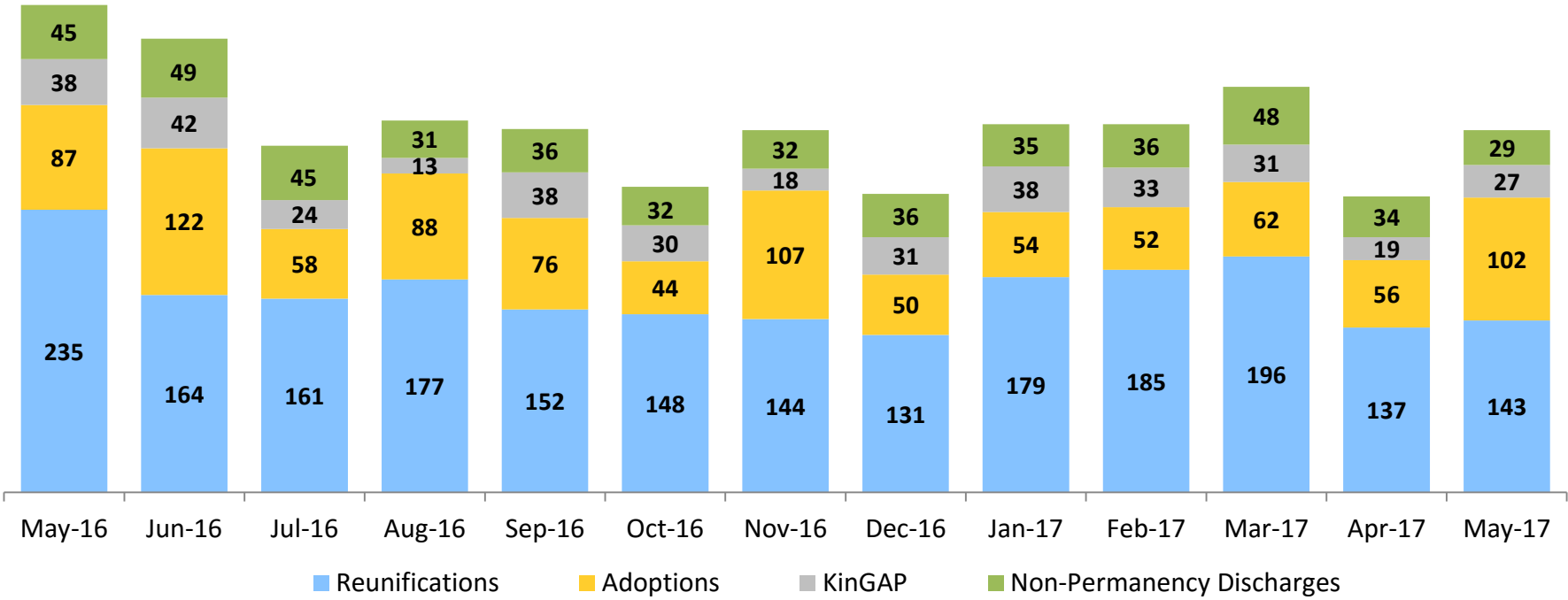
Children Freed for Adoption, Surrender by at Least One Parent

May 2016 – May 2017



	May 2016	Jun 2016	Jul 2016	Aug 2016	Sep 2016	Oct 2016	Nov 2016	Dec 2016	Jan 2017	Feb 2017	Mar 2017	Apr 2017	May 2017
Number Freed for Adoption	91	72	43	81	61	66	51	63	54	54	61	67	58

Permanency and Non-Permanency* Discharges from Foster Care** May 2016 – May 2017



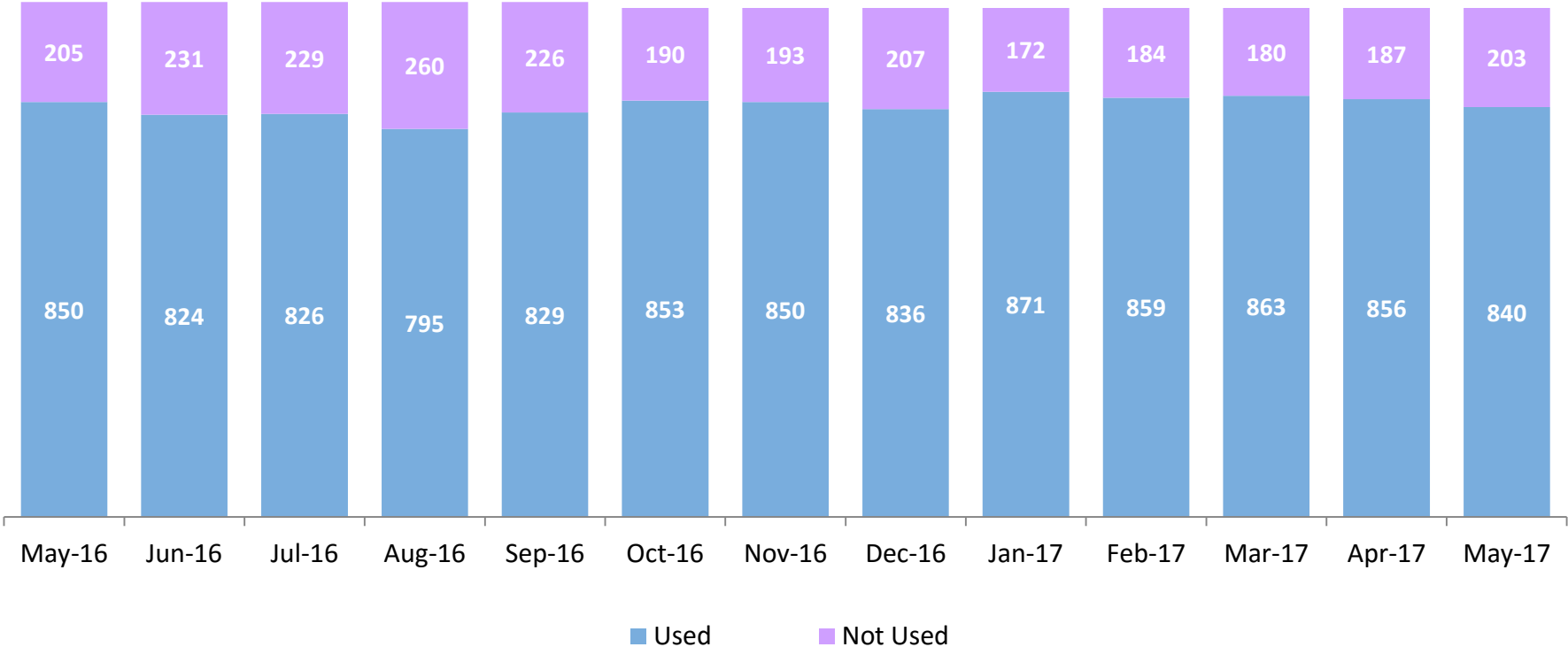
	May 2016	Jun 2016	Jul 2016	Aug 2016	Sep 2016	Oct 2016	Nov 2016	Dec 2016	Jan 2017	Feb 2017	Mar 2017	Apr 2017	May 2017
Number of Discharges	405	377	288	309	302	254	301	248	306	306	337	246	301

*Non-permanency discharges include AWOL, APPLA , other discharge destinations such as psychiatric institutions and correctional facilities and discharges with unspecified destinations.

**Excludes discharges of youth who entered care as a JD.

Residential Care Capacity and Utilization

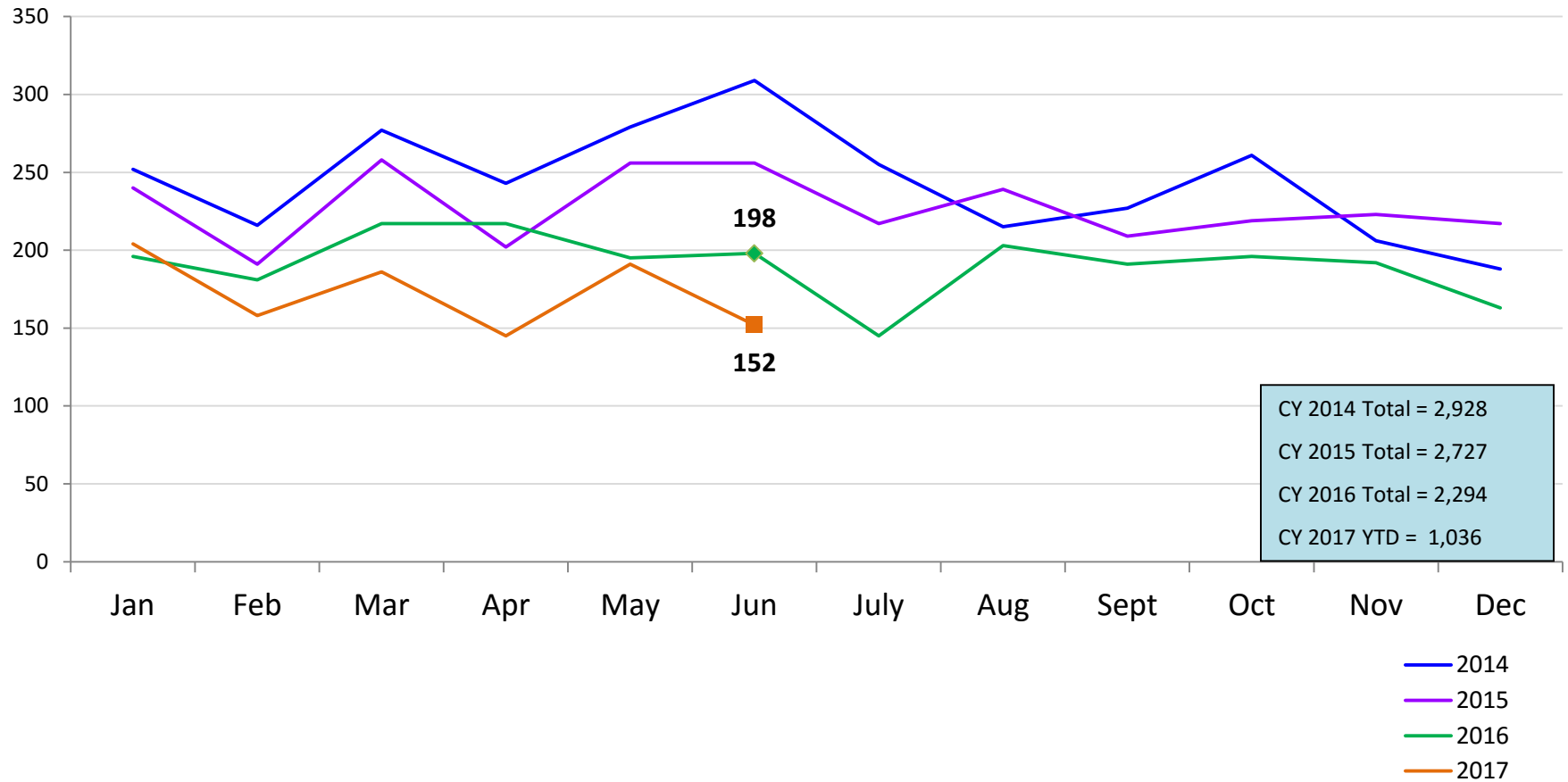
May 2016 – May 2017



	May 2016	Jun 2016	Jul 2016	Aug 2016	Sep 2016	Oct 2016	Nov 2016	Dec 2016	Jan 2017	Feb 2017	Mar 2017	Apr 2017	May 2017
Capacity	1,055	1,055	1,055	1,055	1,055	1,043	1,043	1,043	1,043	1,043	1,043	1,043	1,043

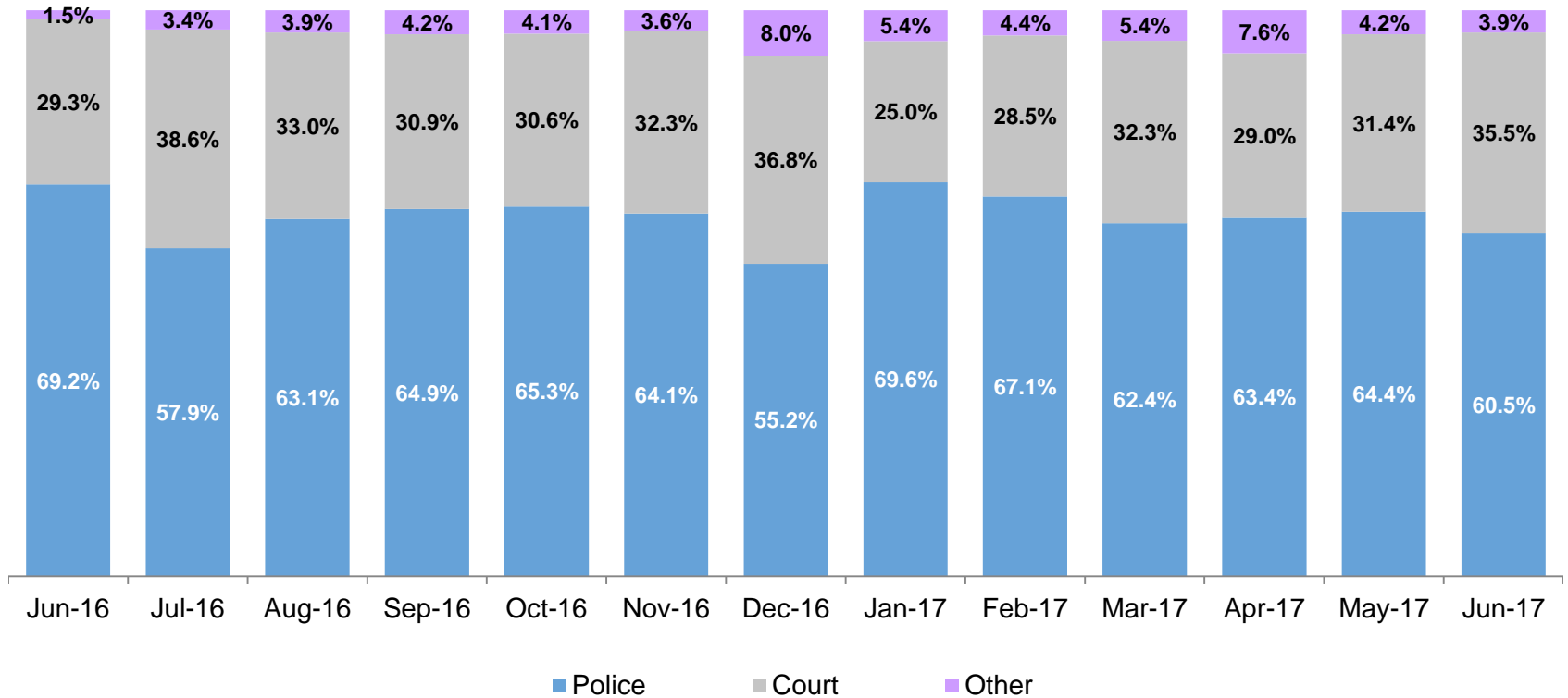
Total Monthly Admissions to Detention

January 2014 – June 2017 (Monthly Total)



Admit Authority, Detention Admissions

June 2016 – June 2017 (Monthly Total)

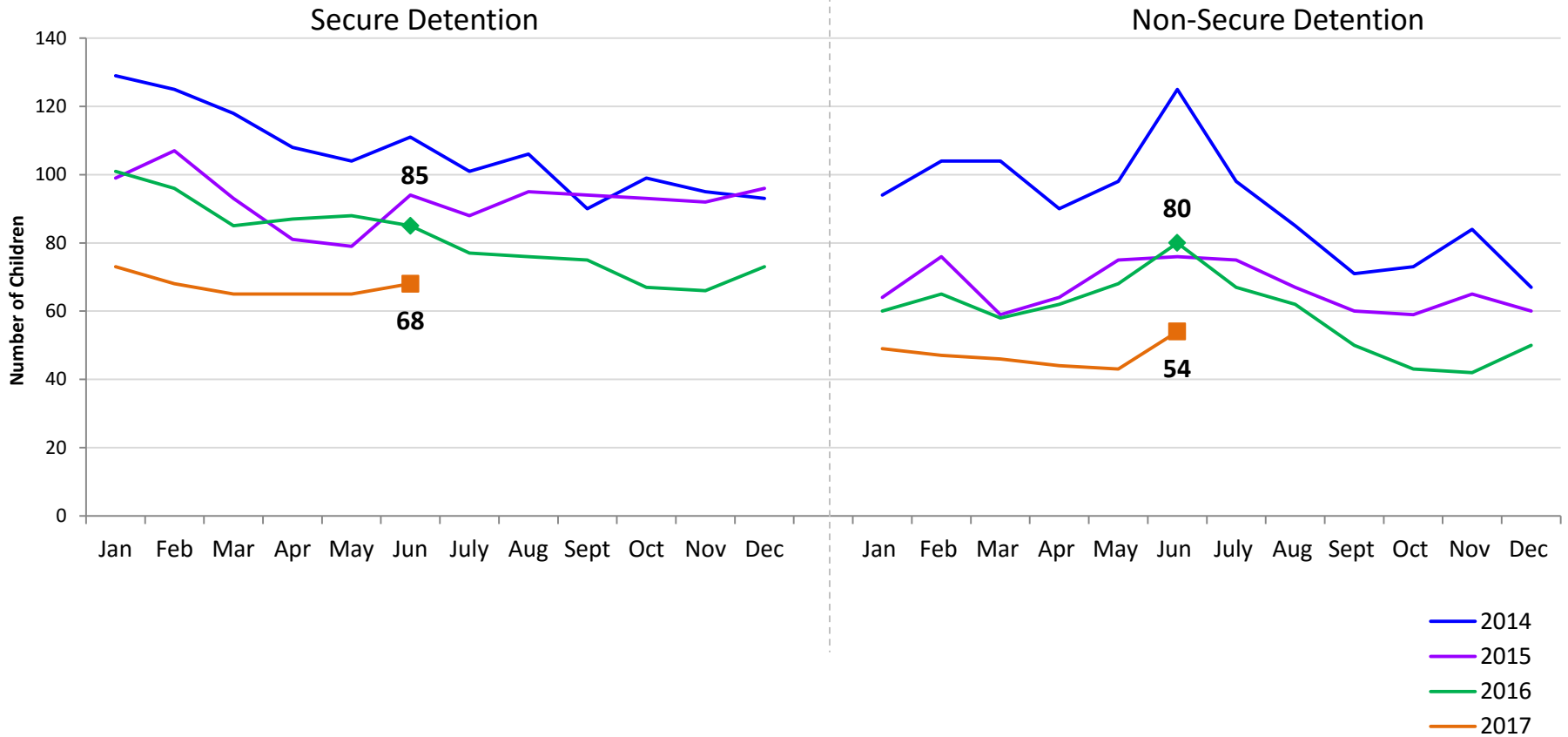


	Jun-16	Jul-16	Aug-16	Sep-16	Oct-16	Nov-16	Dec-16	Jan-17	Feb-17	Mar-17	Apr-17	May-17	Jun-17
Number of Admissions	198	145	203	191	196	192	163	204	158	186	145	191	152

Note: Other Admit Authority includes the Sheriff Department, Department of Corrections and ACS.

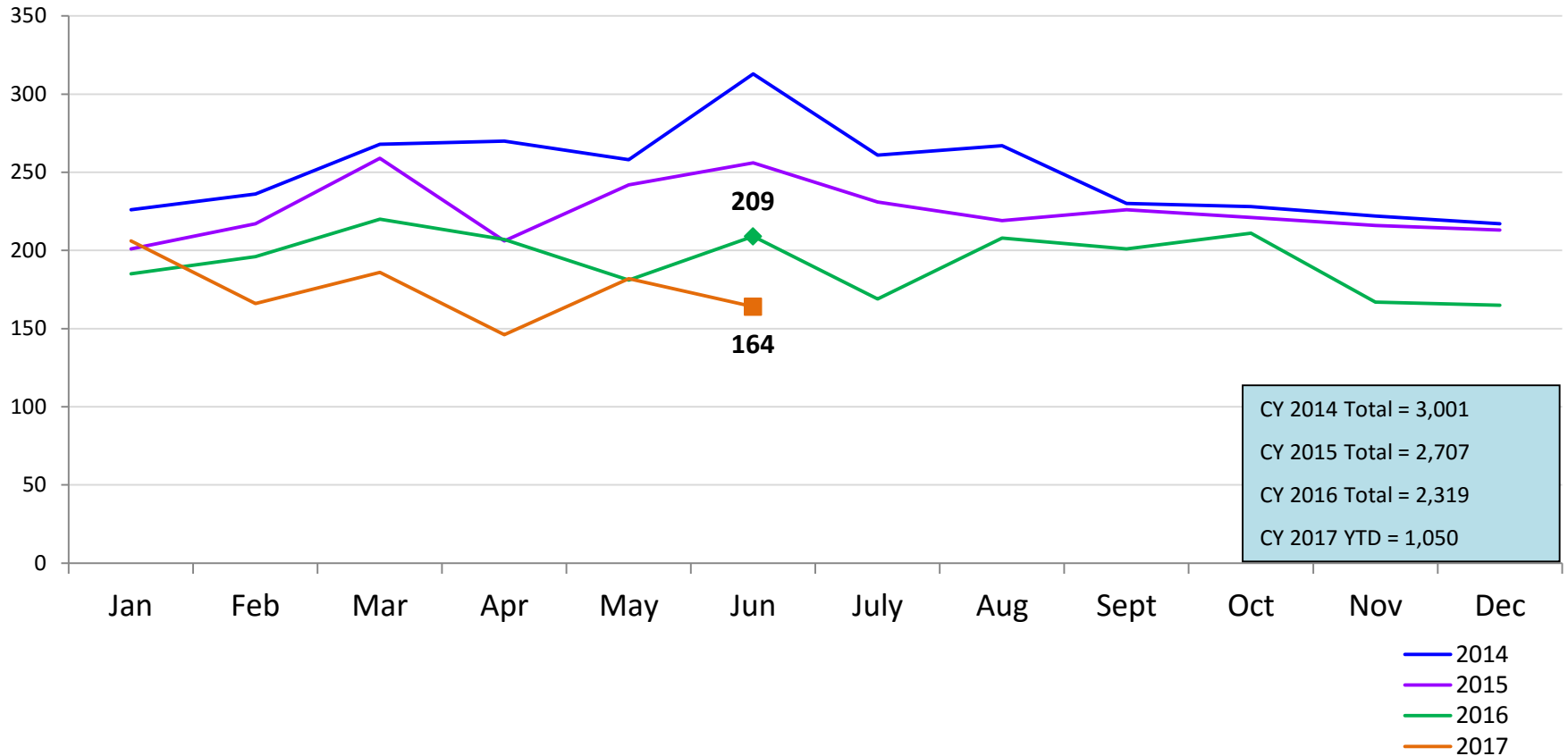
Monthly Average Daily Population

January 2014 – June 2017



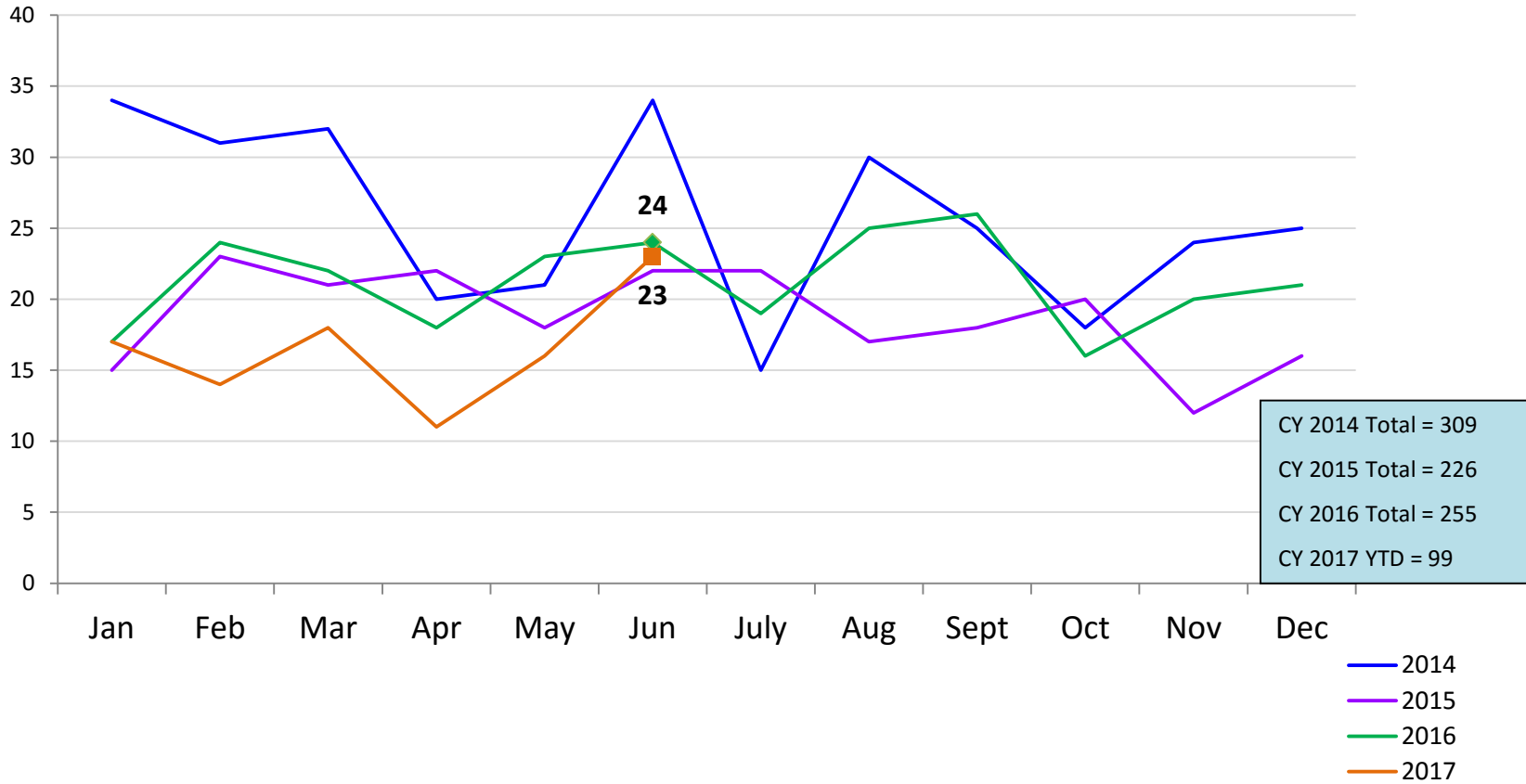
Total Monthly Releases from Detention

January 2014 – June 2017 (Monthly Total)



Close to Home Intakes*

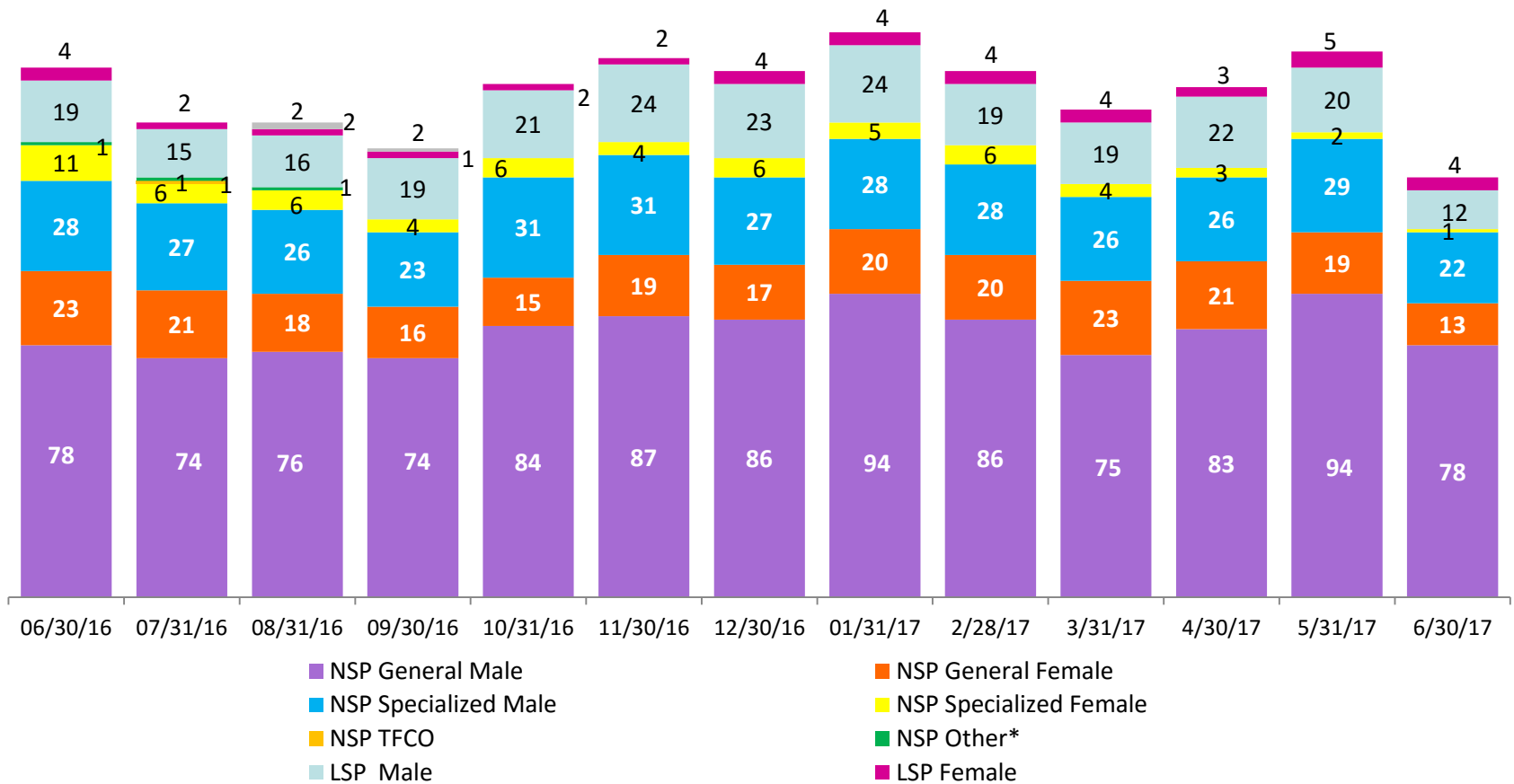
January 2014 – June 2017 (Monthly Total)



*Beginning in December 2015 Close to Home Intakes include LSP as well as NSP.

CTH Placement, in 24-hour Care

June 2016 – June 2017 (end of month)

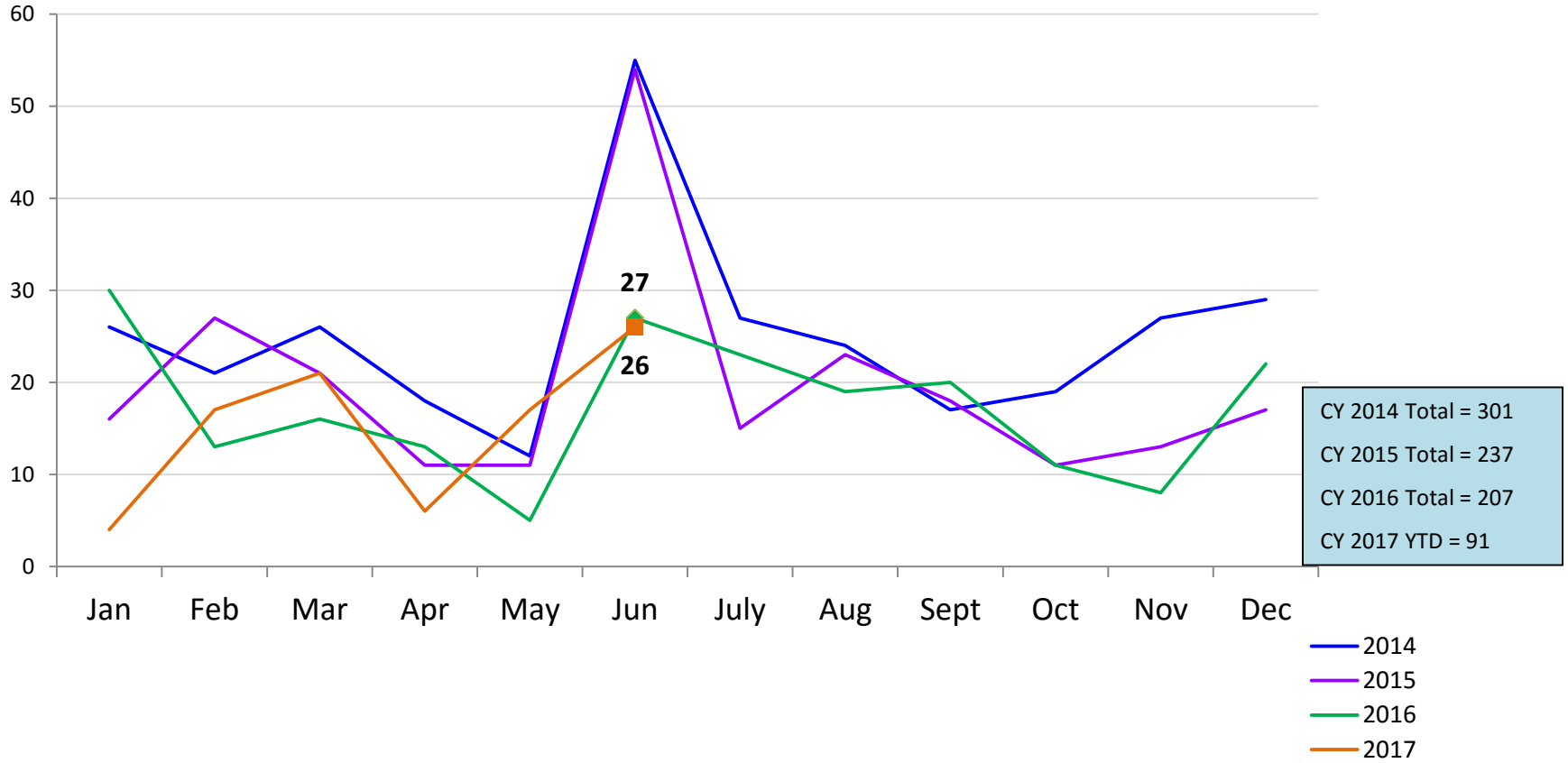


Number in Placement													
	6/30/16	7/31/16	8/31/16	9/30/16	10/31/16	11/30/16	12/30/16	1/31/17	2/28/17	3/31/17	4/30/17	5/31/17	6/30/17
NSP	141	130	127	117	136	141	136	147	140	128	133	144	114
LSP	23	17	20	22	23	26	27	28	23	23	25	25	16

*NSP Other includes youth in child welfare and mother/child placements.

Releases from Close to Home Placement to Aftercare

January 2014 – June 2017 (Monthly Total)



Appendix

Figure 1: SCR Intakes by Borough, APR 16 - JUN 16 and APR 17 - JUN 17

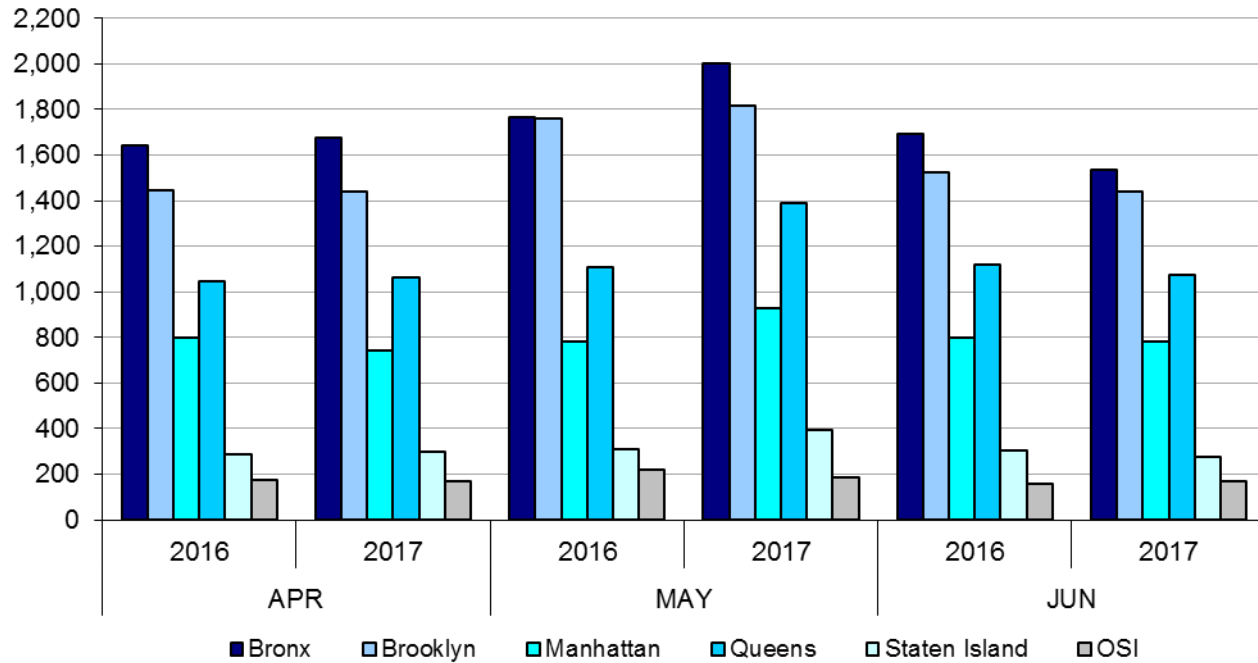


Table 1 - SCR Intake Changes by Borough, APR 16 - JUN 16 and APR 17 - JUN 17

Month	Year	Bronx	Brooklyn	Manhattan	Queens	Staten Island	OSI	Other	Total
APR	2016	1,645	1,448	796	1,044	286	174	159	5,552
	2017	1,676	1,442	741	1,062	296	170	151	5,538
	% Change	1.9%	-0.4%	-6.9%	1.7%	3.5%	-2.3%	-5.0%	-0.3%
MAY	2016	1,767	1,759	782	1,110	311	217	154	6,100
	2017	2,005	1,815	930	1,389	396	186	189	6,910
	% Change	13.5%	3.2%	18.9%	25.1%	27.3%	-14.3%	22.7%	13.3%
JUN	2016	1,471	1,464	669	1,038	267	158	151	5,219
	2017	1,537	1,442	784	1,076	277	167	177	5,460
	% Change	4.5%	-1.5%	17.2%	3.7%	3.7%	5.7%	17.2%	4.6%
Total	2015/2016	4,883	4,671	2,247	3,192	864	549	464	16,871
	2016/2017	5,218	4,699	2,455	3,527	969	523	517	17,908
	% Change	6.9%	0.6%	9.3%	10.5%	12.2%	-4.7%	11.4%	6.1%

Figure 2: Citywide SCR Intakes by Reporter Group, APR 16 - JUN 16 and APR 17 - JUN 17

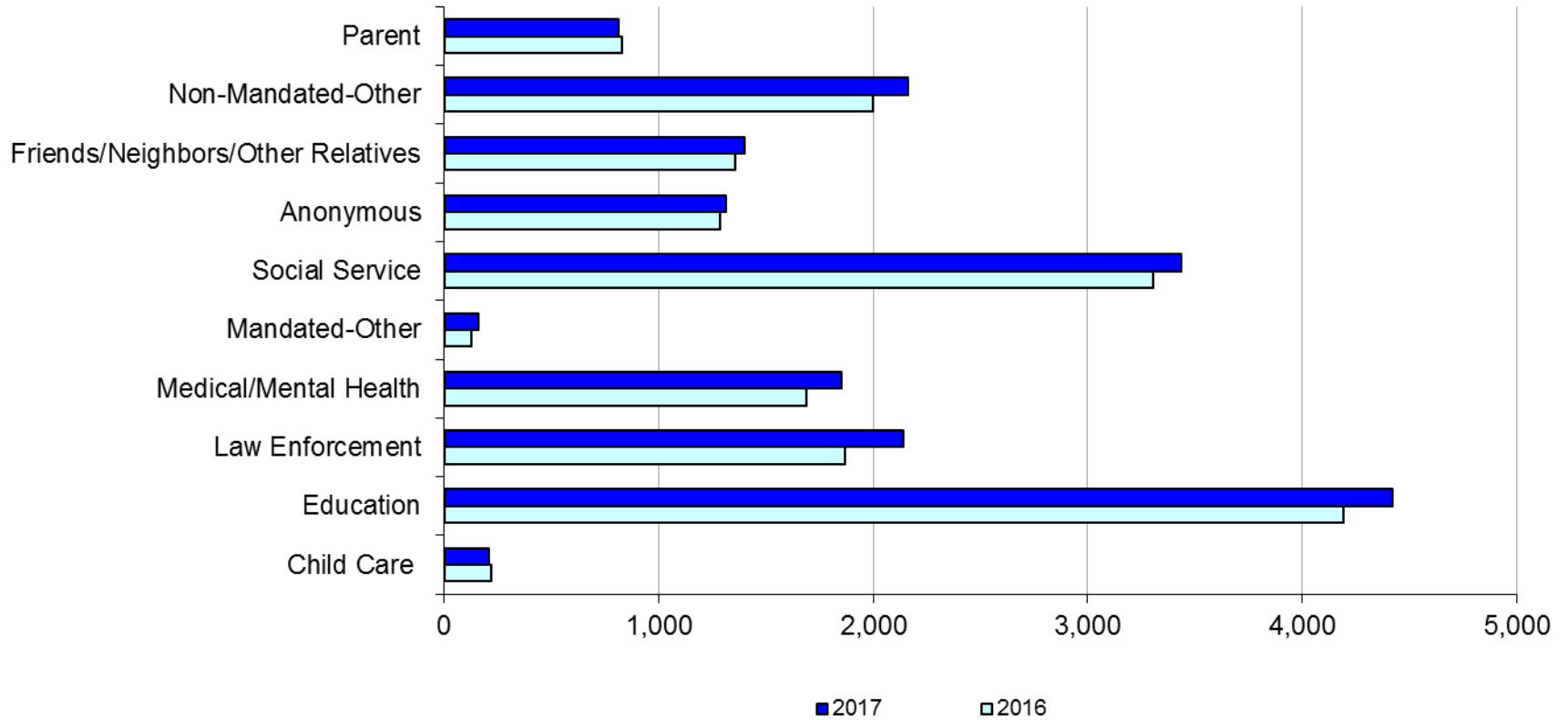
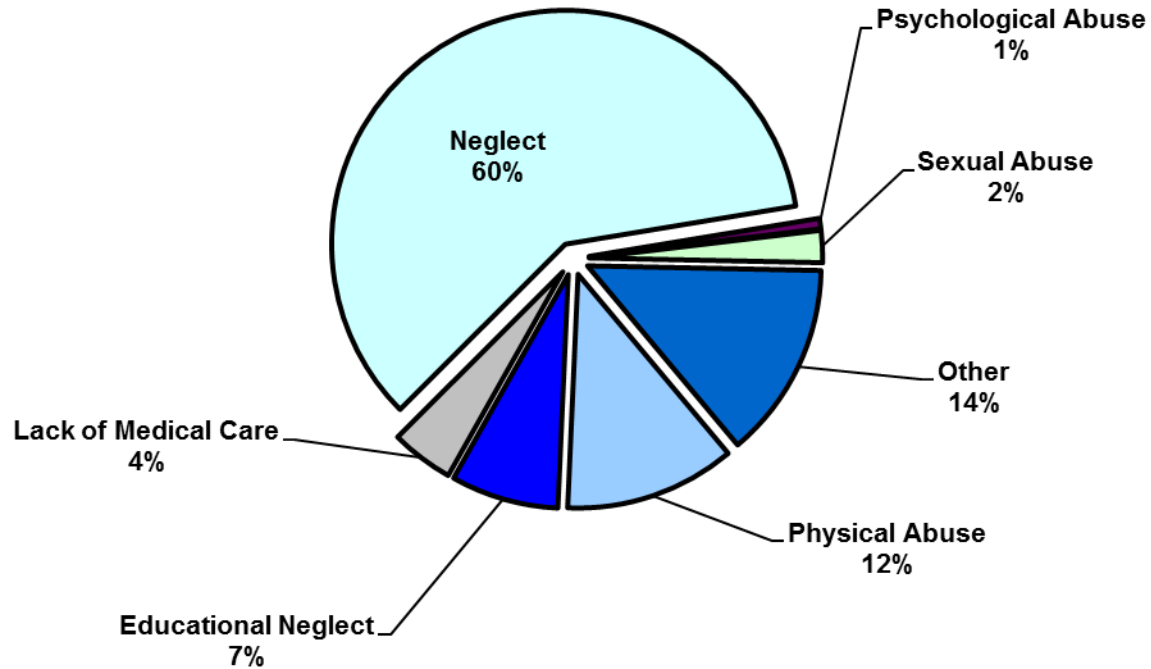


Table 2 - SCR Intakes by Reporter Group, APR 16 - JUN 16 and APR 17 - JUN 17

Year	Child Care/ Substitute Care Personnel	Educational Personnel	Law Enforcement	Medical/ Mental Health Personnel	Mandated- Other	Social Service Personnel	Anonymous	Friends/ Neighbors/ Other Relatives	Non- Mandated- Other	Parent	Foster Parent	Total
Bronx												
2016	57	1,318	443	480	30	977	343	397	635	206	1	4,887
2017	57	1,343	563	494	40	1,023	388	454	661	197	1	5,221
% Change	0.0%	1.9%	27.1%	2.9%	33.3%	4.7%	13.1%	14.4%	4.1%	-4.4%	0.0%	6.8%
Brooklyn												
2016	59	1,204	620	444	44	851	365	365	518	203	3	4,676
2017	47	1,216	630	463	43	858	339	353	553	198	1	4,701
% Change	-20.3%	1.0%	1.6%	4.3%	-2.3%	0.8%	-7.1%	-3.3%	6.8%	-2.5%	-66.7%	0.5%
Manhattan												
2016	31	440	294	257	19	446	186	192	272	109	2	2,248
2017	35	453	340	285	22	497	213	195	314	101	0	2,455
% Change	12.9%	3.0%	15.6%	10.9%	15.8%	11.4%	14.5%	1.6%	15.4%	-7.3%	-100.0%	9.2%
Queens												
2016	23	899	317	314	15	655	227	256	346	140	1	3,193
2017	26	1,076	372	359	27	662	224	242	388	151	0	3,527
% Change	13.0%	19.7%	17.4%	14.3%	80.0%	1.1%	-1.3%	-5.5%	12.1%	7.9%	-100.0%	10.5%
Staten Island												
2016	9	260	81	86	6	123	106	77	81	36	0	865
2017	7	255	93	129	8	147	95	91	96	48	0	969
% Change	-22.2%	-1.9%	14.8%	50.0%	33.3%	19.5%	-10.4%	18.2%	18.5%	33.3%	--	12.0%
OSI												
2016	37	40	26	41	8	114	36	43	103	97	3	548
2017	33	50	30	57	13	87	30	32	109	79	4	524
% Change	-10.8%	25.0%	15.4%	39.0%	62.5%	-23.7%	-16.7%	-25.6%	5.8%	-18.6%	33.3%	-4.4%
Other												
2016	6	32	87	66	3	141	23	26	44	37	0	465
2017	5	29	110	66	5	160	22	34	43	41	1	516
% Change	-16.7%	-9.4%	26.4%	0.0%	66.7%	13.5%	-4.3%	30.8%	-2.3%	10.8%	--	11.0%
Citywide												
2016	222	4,193	1,868	1,688	125	3,307	1,286	1,356	1,999	828	10	16,882
2017	210	4,422	2,138	1,853	158	3,434	1,311	1,401	2,164	815	7	17,913
% Change	-5.4%	5.5%	14.5%	9.8%	26.4%	3.8%	1.9%	3.3%	8.3%	-1.6%	-30.0%	6.1%

Figure 3: SCR Allegations, APR 17 – JUN 17



Total Allegations = 44,881

Allegations are grouped as follows: Physical Abuse - burn, fatality, fracture, choking, twisting, shaking, excessive corporal punishment, internal injuries, lacerations, bruises, welts, poisoning, noxious substances; Educational Neglect – educational neglect; Lack of Medical Care – lack of medical care; Neglect - inadequate guardianship, inadequate food, clothing, shelter, lack of supervision, malnutrition, failure to thrive, swelling, dislocations, sprains; Psychological Abuse - isolation, emotional neglect; Sexual Abuse – sexual abuse; and Other -parental drug use, child drug use, abandonment, inappropriate custodial conduct.

Table 3 - SCR Allegations, APR 16 - JUN 16 and APR 17 – JUN 17

Year	Physical Abuse	Educational Neglect	Lack of Medical Care	Neglect	Psychological Abuse	Sexual Abuse	Other	Total
Bronx								
2016	1,516	1,144	564	7,699	56	239	1,688	12,906
2017	1,484	1,255	624	8,229	85	285	1,890	13,852
% Change	-2.1%	9.7%	10.6%	6.9%	51.8%	19.2%	12.0%	7.3%
Brooklyn								
2016	1,479	952	508	7,304	88	256	1,592	12,179
2017	1,369	962	492	7,107	78	264	1,441	11,713
% Change	-7.4%	1.1%	-3.1%	-2.7%	-11.4%	3.1%	-9.5%	-3.8%
Manhattan								
2016	558	366	202	2776	25	96	650	4,673
2017	547	379	250	3029	34	100	670	5,009
% Change	-2.0%	3.6%	23.8%	9.1%	36.0%	4.2%	3.1%	7.2%
Queens								
2016	1,060	447	345	4,466	48	164	1,050	7,580
2017	1,136	522	352	5,026	87	188	1,176	8,487
% Change	7.2%	16.8%	2.0%	12.5%	81.3%	14.6%	12.0%	12.0%
Staten Island								
2016	242	166	82	1,404	9	33	432	2,368
2017	292	151	106	1,535	23	49	436	2,592
% Change	20.7%	-9.0%	29.3%	9.3%	155.6%	48.5%	0.9%	9.5%
OSI								
2016	334	51	79	1,323	5	54	183	2,029
2017	346	41	73	1,249	4	64	173	1,950
% Change	3.6%	-19.6%	-7.6%	-5.6%	-20.0%	18.5%	-5.5%	-3.9%
Other								
2016	108	39	42	676	6	40	239	1,150
2017	130	39	50	700	14	43	302	1,278
% Change	20.4%	0.0%	19.0%	3.6%	133.3%	7.5%	26.4%	11.1%
Citywide								
2016	5,297	3,165	1,822	25,648	237	882	5,834	42,885
2017	5,304	3,349	1,947	26,875	325	993	6,088	44,881
% Change	0.1%	5.8%	6.9%	4.8%	37.1%	12.6%	4.4%	4.7%

**TABLE 4 - Child Welfare Preventive Cases
New and Closed
January 2014 to June 2017**

Month	New Cases	Closed Cases
2014		
Jan-14	841	761
Feb-14	885	785
Mar-14	998	1,009
Apr-14	919	1,059
May-14	919	1,056
Jun-14	890	899
Jul-14	973	1,236
Aug-14	826	1,189
Sep-14	841	878
Oct-14	835	1,035
Nov-14	677	887
Dec-14	1,062	927
2015		
Jan-15	728	882
Feb-15	902	836
Mar-15	1,122	932
Apr-15	977	1,023
May-15	914	1,084
Jun-15	1,068	997
Jul-15	899	1,298
Aug-15	893	1,128
Sep-15	764	1,040
Oct-15	749	986
Nov-15	746	881
Dec-15	1,013	982
2016		
Jan-16	792	851
Feb-16	897	872
Mar-16	1,029	1,065
Apr-16	836	978
May-16	890	1,049
Jun-16	996	1,015
Jul-16	842	1,126
Aug-16	897	1,087
Sep-16	821	908
Oct-16	776	696
Nov-16	728	558
Dec-16	816	531
2017		
Jan-17	548	474
Feb-17	602	904
Mar-17	864	1,105
Apr-17	645	830
May-17	789	946
Jun-17	886	995

**Table 5 - Referrals to Child Welfare Preventive Services by Source
January 2014 to June 2017**

Month	Total Referrals	Division of Child Protection	Foster Care Agencies	PPRS Transfer	School	Self	Other Sources*
2014							
Jan-14	1,537	70.0%	1.2%	6.6%	2.3%	5.8%	14.2%
Feb-14	1,334	69.7%	0.8%	8.4%	1.7%	5.5%	13.9%
Mar-14	1,612	70.0%	1.4%	8.6%	1.6%	5.3%	13.1%
Apr-14	1,525	70.2%	0.9%	7.6%	2.1%	3.7%	15.4%
May-14	1,580	74.4%	0.7%	8.3%	1.4%	5.2%	10.0%
Jun-14	1,550	78.6%	1.2%	6.3%	1.2%	3.2%	9.4%
Jul-14	1,659	79.6%	1.5%	6.7%	0.4%	4.2%	7.6%
Aug-14	1,395	72.2%	1.6%	10.8%	0.3%	4.9%	10.3%
Sep-14	1,597	49.4%	1.5%	7.6%	0.3%	4.5%	36.8%
Oct-14	1,634	68.2%	1.9%	10.0%	1.2%	4.6%	14.1%
Nov-14	1,311	66.4%	0.9%	14.3%	2.4%	3.9%	12.1%
Dec-14	1,785	71.1%	1.4%	8.8%	2.9%	4.8%	11.0%
CY 2014	18,519	70.1%	1.3%	8.6%	1.5%	4.6%	14.0%
2015							
Jan-15	1,430	74.4%	1.6%	8.7%	1.8%	3.8%	9.7%
Feb-15	1,538	76.5%	0.8%	8.1%	1.8%	4.7%	8.2%
Mar-15	1,798	74.6%	0.9%	7.3%	1.6%	4.8%	10.8%
Apr-15	1,719	78.2%	1.3%	7.2%	0.6%	3.5%	9.1%
May-15	1,561	77.2%	1.0%	5.1%	1.5%	4.5%	10.8%
Jun-15	1,716	77.4%	1.1%	7.7%	1.2%	3.5%	9.1%
Jul-15	1,511	79.6%	0.9%	7.2%	0.3%	3.8%	8.2%
Aug-15	1,418	79.3%	2.2%	7.8%	0.2%	3.1%	7.5%
Sep-15	1,209	72.1%	2.8%	10.4%	0.5%	5.5%	8.6%
Oct-15	1,338	70.4%	1.9%	8.3%	2.1%	5.8%	11.6%
Nov-15	1,220	68.2%	1.8%	9.6%	1.4%	6.2%	12.8%
Dec-15	1,526	73.5%	1.6%	8.0%	2.0%	5.0%	9.9%
2016							
Jan-16	1,370	73.6%	1.6%	8.2%	0.7%	5.4%	10.6%
Feb-16	1,436	75.8%	2.2%	7.8%	1.0%	3.8%	9.3%
Mar-16	1,557	72.0%	2.1%	8.8%	1.0%	4.6%	11.4%
Apr-16	1,378	76.1%	1.5%	7.4%	1.5%	3.5%	10.0%
May-16	1,386	73.4%	1.4%	8.7%	1.0%	4.7%	10.8%
Jun-16	1,564	77.2%	2.4%	6.2%	1.5%	4.1%	8.6%
Jul-16	1,338	80.3%	1.7%	6.4%	1.0%	4.2%	6.4%
Aug-16	1,385	79.1%	1.8%	7.1%	0.4%	4.0%	7.6%
Sep-16	1,297	77.8%	2.1%	7.5%	0.8%	4.5%	7.4%
Oct-16	1,247	70.1%	2.0%	7.6%	1.5%	5.9%	12.9%
Nov-16	1,229	67.8%	2.0%	7.8%	1.2%	5.5%	15.8%
Dec-16	1,175	76.0%	1.5%	7.1%	1.3%	3.8%	10.3%
2017							
Jan-17	1,046	78.5%	1.4%	6.7%	0.7%	3.1%	9.7%
Feb-17	1,067	77.7%	0.8%	6.7%	0.8%	3.8%	10.1%
Mar-17	1,383	79.1%	0.6%	6.9%	0.9%	4.0%	8.5%
Apr-17	1,116	81.2%	1.0%	5.9%	1.1%	1.4%	9.4%
May-17	1,336	82.0%	0.9%	5.5%	1.3%	2.8%	7.6%
Jun-17	1,430	84.3%	0.7%	6.2%	0.9%	2.2%	5.8%

*Other Community Sources includes the Department of Homeless Services, Family Court, FAP, Hospitals and Medical facilities, the NYC Housing Authority, Probation, and Sponsor Agencies.