



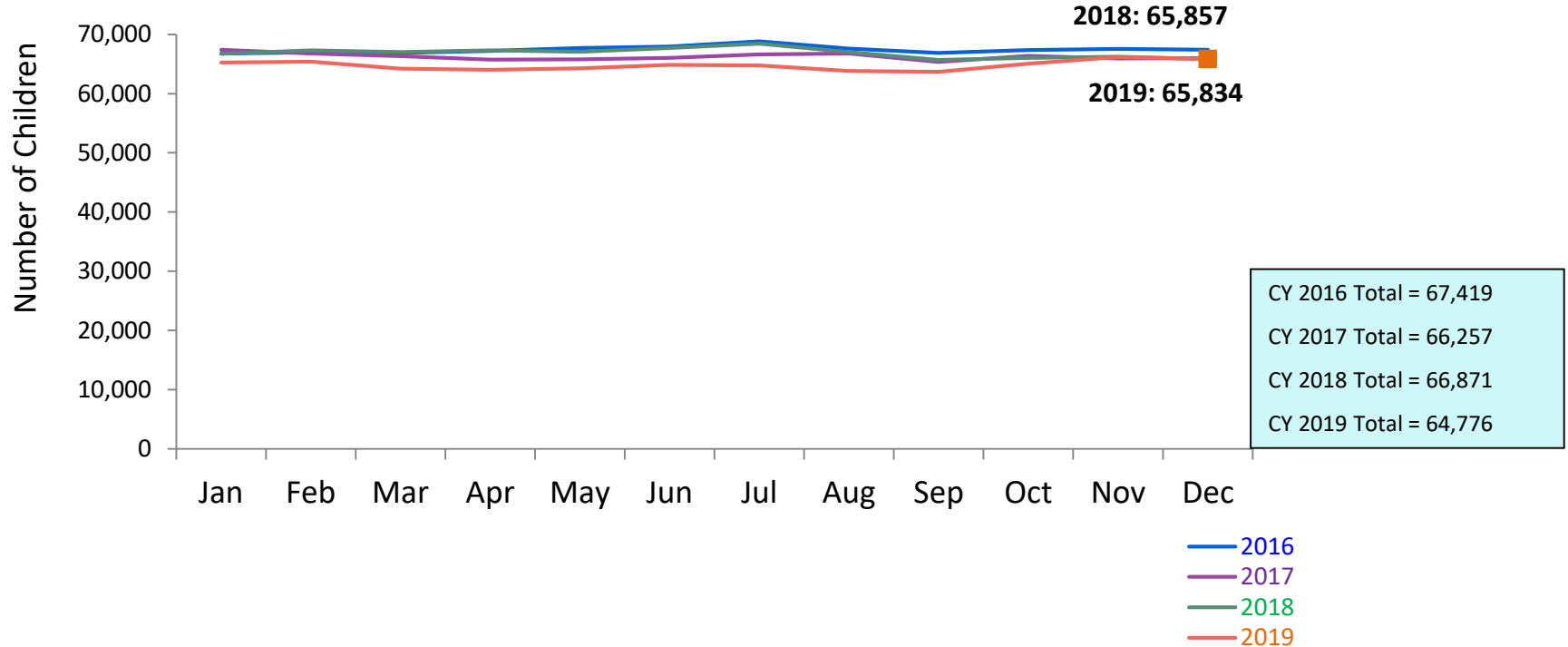
FLASH

monthly indicator

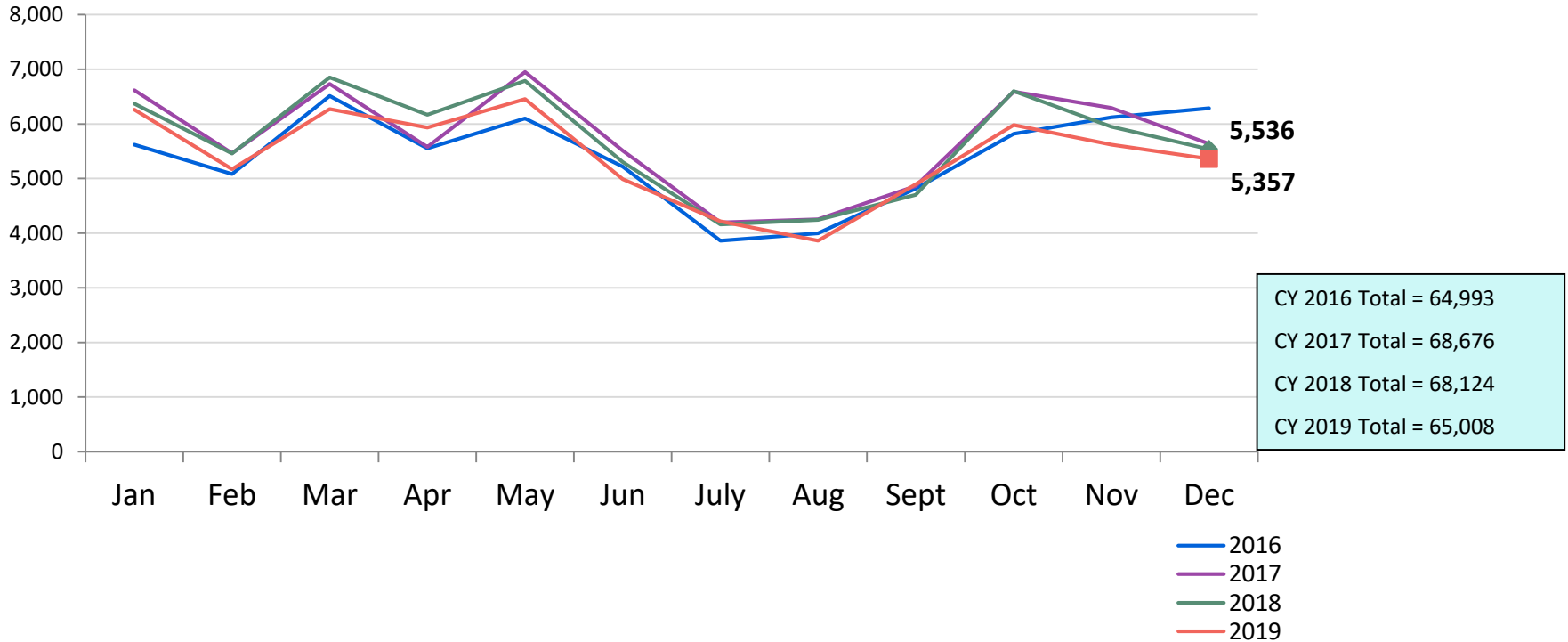
REPORT

January 2020

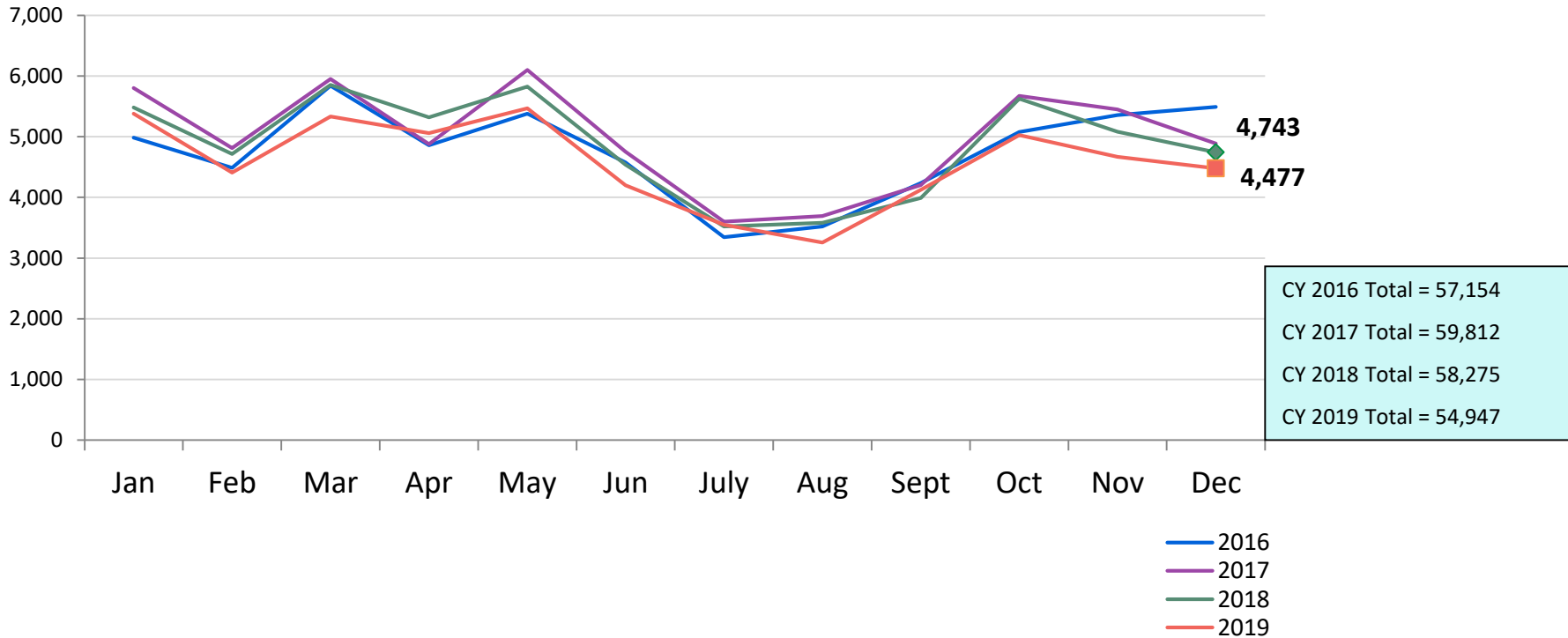
Children Using Vouchers for Child Care
January 2016 – December 2019 (End of Month)



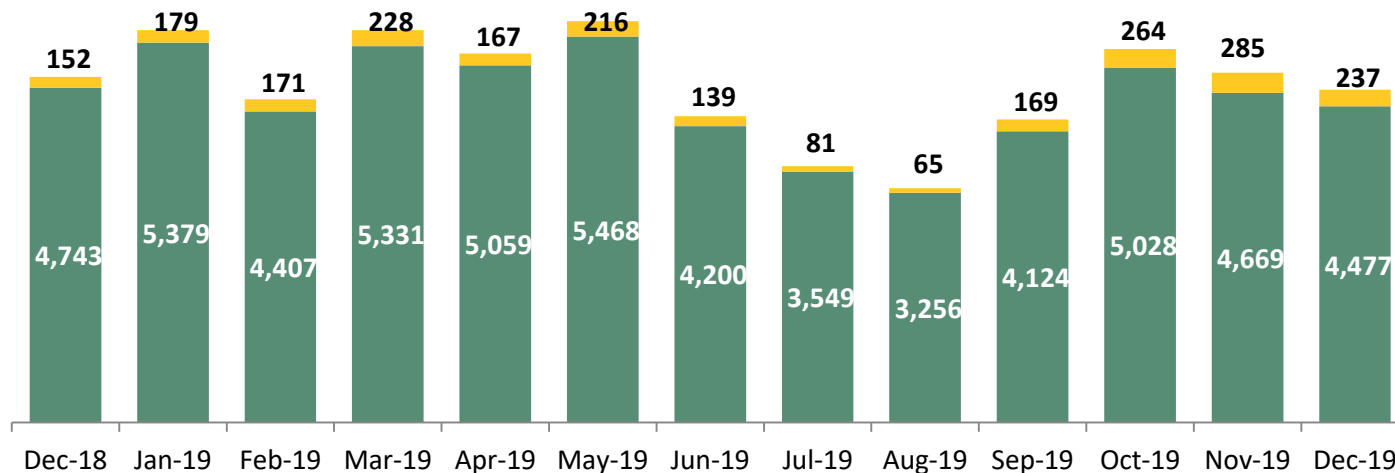
SCR Intakes
January 2016 - December 2019



SCR Consolidated Investigations
January 2016 – December 2019



Consolidated Investigations and FAR* Cases December 2018 – December 2019



Calendar-Year-to-Date

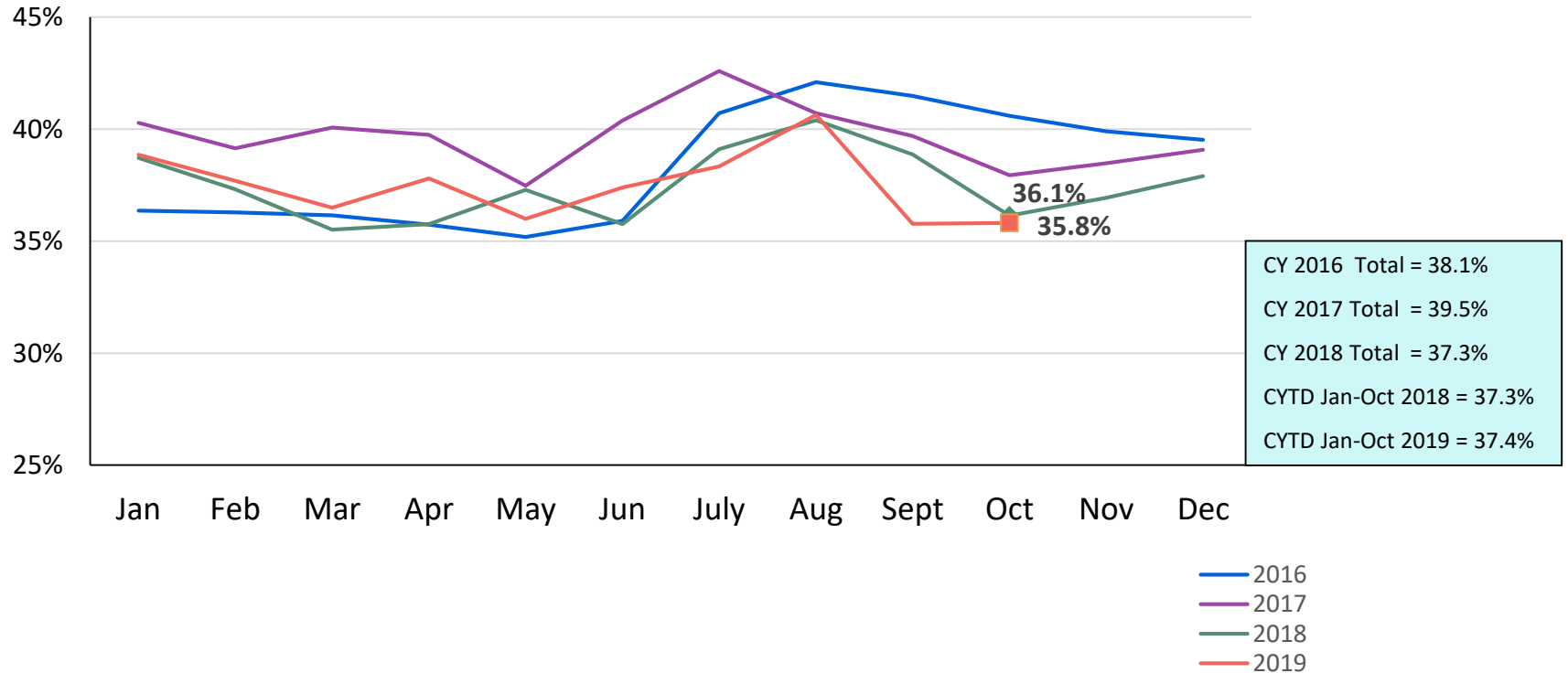
| Jan-Dec 2018 | Jan-Dec 2019 |
|--------------|--------------|
| 1,738 | 2,201 |
| 58,275 | 54,947 |

■ Consolidated Investigations ■ FAR Cases

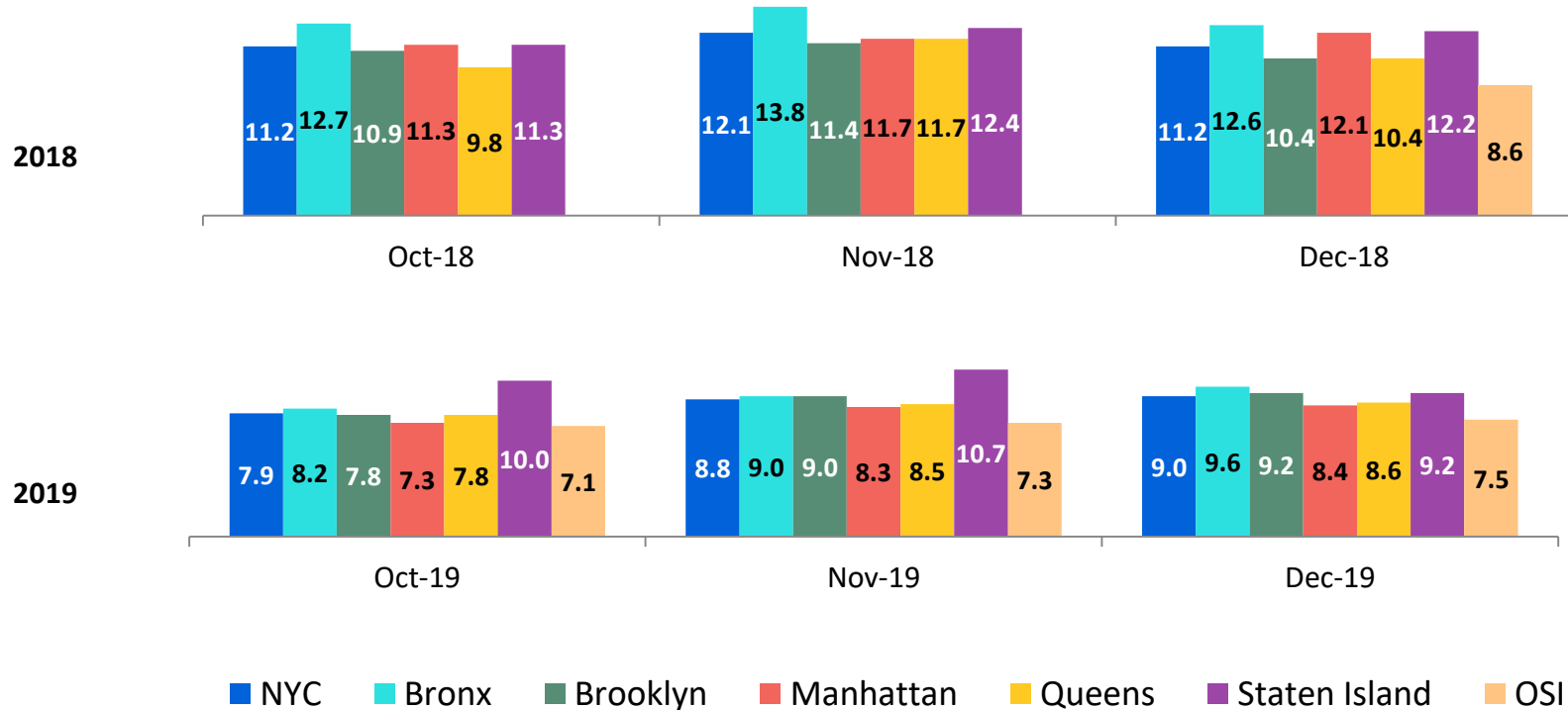
| | Dec 2018 | Jan 2019 | Feb 2019 | Mar 2019 | Apr 2019 | May 2019 | Jun 2019 | Jul 2019 | Aug 2019 | Sep 2019 | Oct 2019 | Nov 2019 | Dec 2019 | Jan-Dec 2018 | Jan-Dec 2019 |
|--------------------------------------|----------|----------|----------|----------|----------|----------|----------|----------|----------|----------|----------|----------|----------|--------------|--------------|
| Number of Investigations & FAR cases | 4,895 | 5,558 | 4,578 | 5,559 | 5,226 | 5,684 | 4,339 | 3,630 | 3,321 | 4,293 | 5,292 | 4,954 | 4,714 | 60,013 | 57,148 |

*FAR (Family Assessment Response) is an alternative Child Protective response to some reports of child maltreatment. FAR does not require an investigation and determination of allegations and individual culpability for families reported to the SCR. It is an alternative approach to providing protection to children by engaging families in an assessment of child safety and of family needs, in finding solutions to family problems and in identifying informal and formal supports to meet their needs and increase their ability to care for their children.

Percent of Investigations that Found Some Credible Evidence of Abuse or Neglect
January 2016 – October 2019

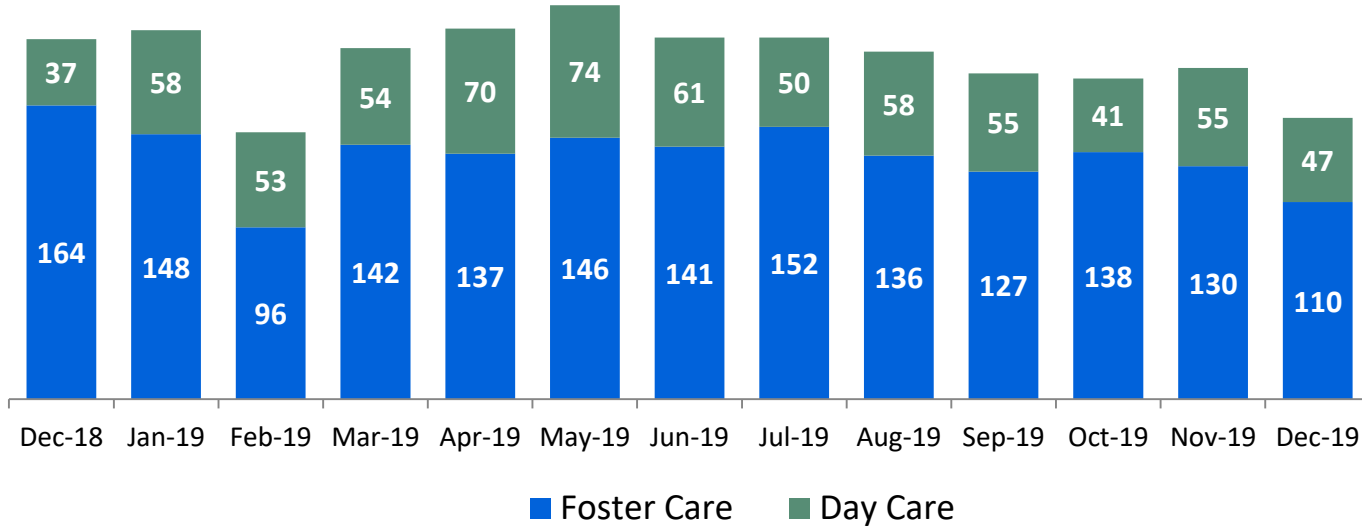


Average Child Protection Caseload*
 October 2018 – December 2018 and October 2019 – December 2019



*Prior to December 2018 caseloads are of Protective/Diagnostic Unit (Child Protection, School Based, Sex Abuse and Hospital Units) caseworkers only. Beginning December 2018, all caseload carrying Child Protection Specialists (CPS) in investigative and Family Assessment Response Units are included. Includes CPS in Primary and Case Manager roles only.

OSI Foster Care and Day Care* Investigations
December 2018 – December 2019



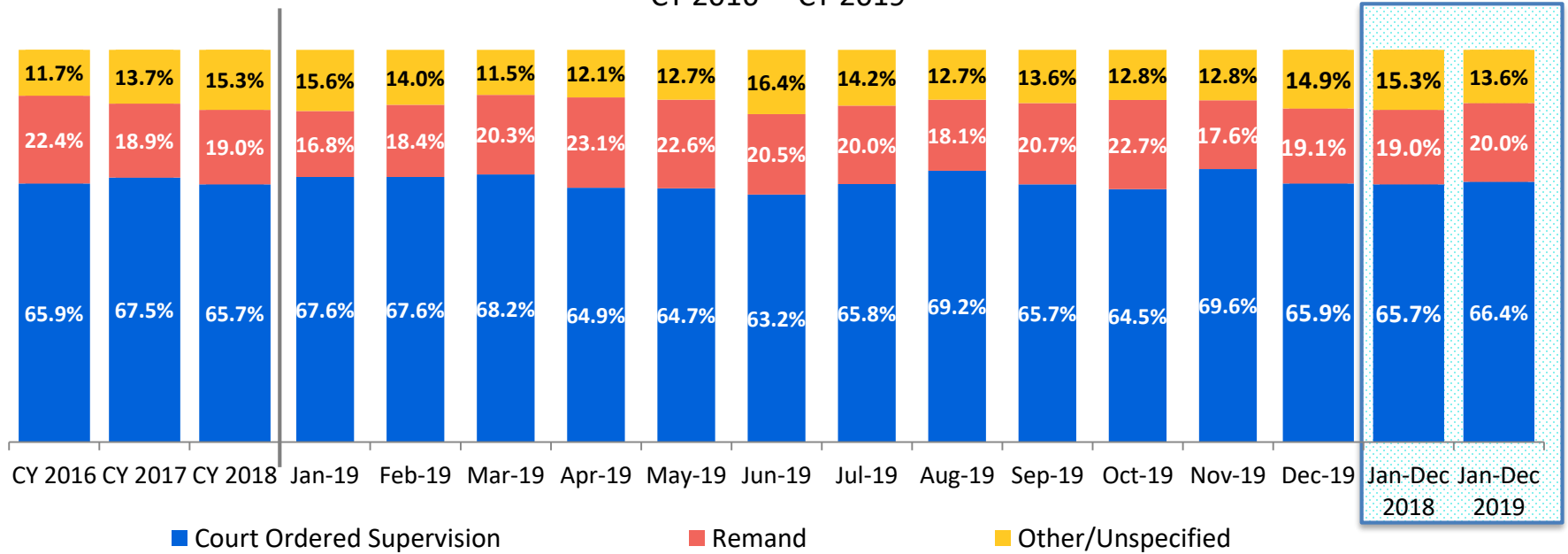
Calendar-Year-to-Date

| Jan-Dec 2018 | Jan-Dec 2019 |
|--------------|--------------|
| 710 | 676 |
| 1,699 | 1,603 |

| | Dec 2018 | Jan 2019 | Feb 2019 | Mar 2019 | Apr 2019 | May 2019 | Jun 2019 | Jul 2019 | Aug 2019 | Sep 2019 | Oct 2019 | Nov 2019 | Dec 2019 | Jan-Dec 2018 | Jan-Dec 2019 |
|--------------------------|----------|----------|----------|----------|----------|----------|----------|----------|----------|----------|----------|----------|----------|--------------|--------------|
| Number of Investigations | 201 | 206 | 149 | 196 | 207 | 220 | 202 | 202 | 194 | 182 | 179 | 185 | 157 | 2,409 | 2,279 |

*Day Care investigations include alleged abuse or maltreatment of children perpetrated by someone who cares for children in a setting that is not the child's familial home and that requires state or local government approval and is subject to state laws, regulations, and oversight. This includes, but is not limited to, ACS/DOE Early Care and Education programs.

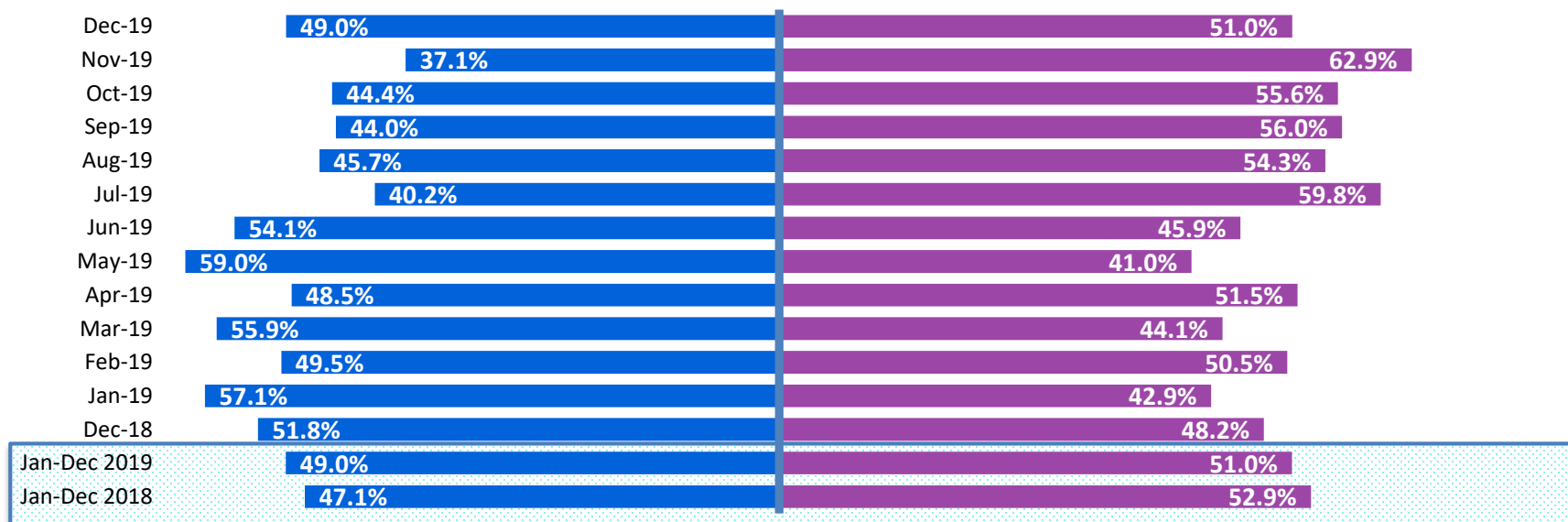
Article 10 Filings and Initial Hearing Outcomes, Children
CY 2016 – CY 2019



| | CY 2016 | CY 2017 | CY 2018 | Jan 2019 | Feb 2019 | Mar 2019 | Apr 2019 | May 2019 | Jun 2019 | Jul 2019 | Aug 2019 | Sep 2019 | Oct 2019 | Nov 2019 | Dec 2019 | Jan-Dec 2018 | Jan-Dec 2019 |
|----------------------------------|---------|---------|---------|----------|----------|----------|----------|----------|----------|----------|----------|----------|----------|----------|----------|--------------|--------------|
| Children with Article 10 Filings | 10,973 | 15,975 | 13,319 | 1,092 | 1,056 | 1,040 | 1,127 | 1,080 | 1,002 | 1,021 | 1,025 | 810 | 1,070 | 951 | 1,057 | 13,319 | 12,331 |

Note: The category "Other/Unspecified" includes released with no supervision, no order issued and no outcome specified.

Remands Approved at Initial Article 10 Hearing by Removal Status December 2018 – December 2019

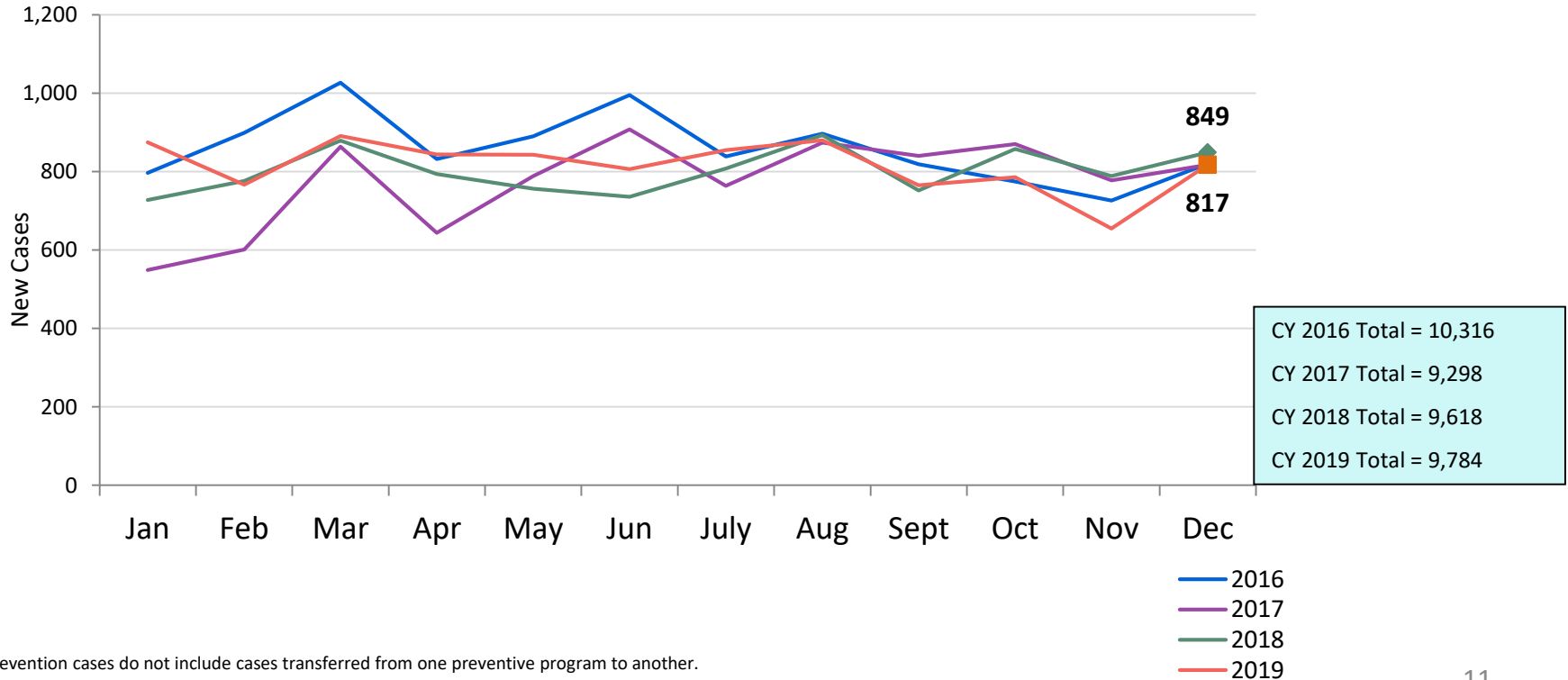


■ Pre-Filing Emergency Removals (court approved at initial hearing)

■ Post-Filing Removals (court ordered at initial hearing)

| | Dec 2018 | Jan 2019 | Feb 2019 | Mar 2019 | Apr 2019 | May 2019 | Jun 2019 | Jul 2019 | Aug 2019 | Sep 2019 | Oct 2019 | Nov 2019 | Dec 2019 | Jan-Dec 2018 | Jan-Dec 2019 |
|-------------------|----------|----------|----------|----------|----------|----------|----------|----------|----------|----------|----------|----------|----------|--------------|--------------|
| Children Remanded | 193 | 184 | 194 | 211 | 260 | 244 | 205 | 204 | 186 | 168 | 243 | 167 | 202 | 2,533 | 2,468 |

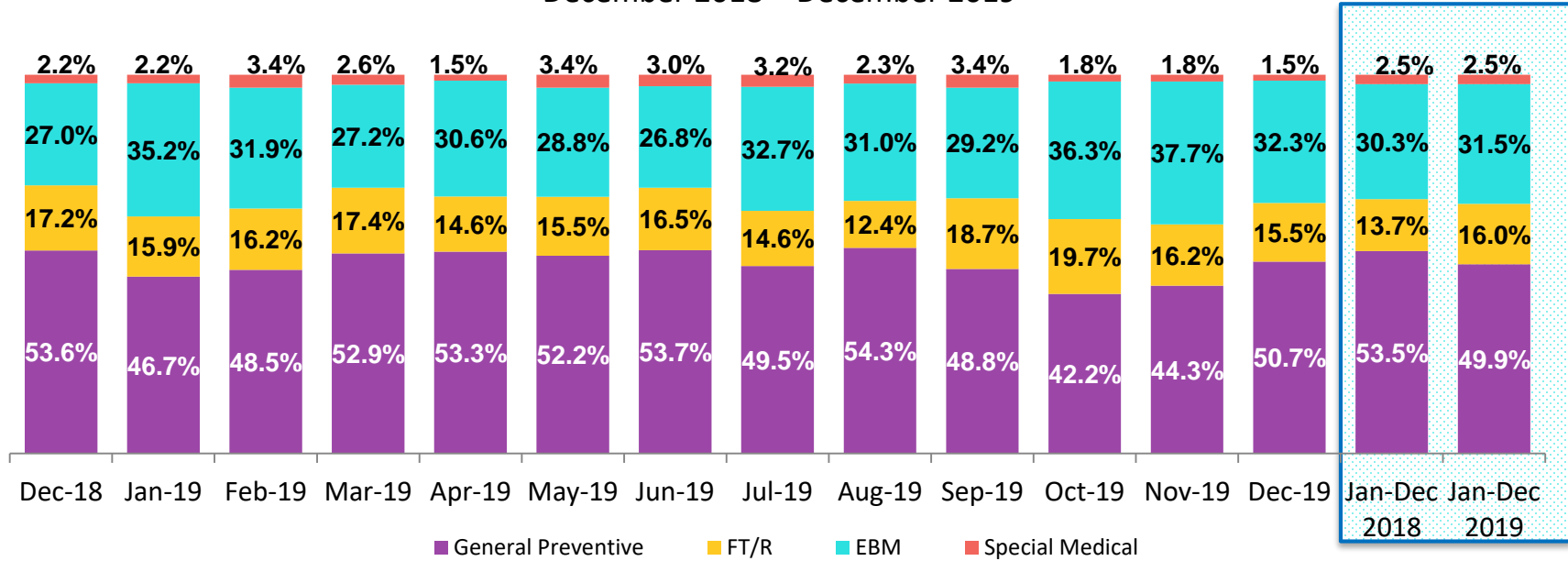
New Child Welfare Prevention Cases
January 2016 – December 2019



*New prevention cases do not include cases transferred from one preventive program to another.

See Pages 31 and 32 of the Appendix for supporting data.

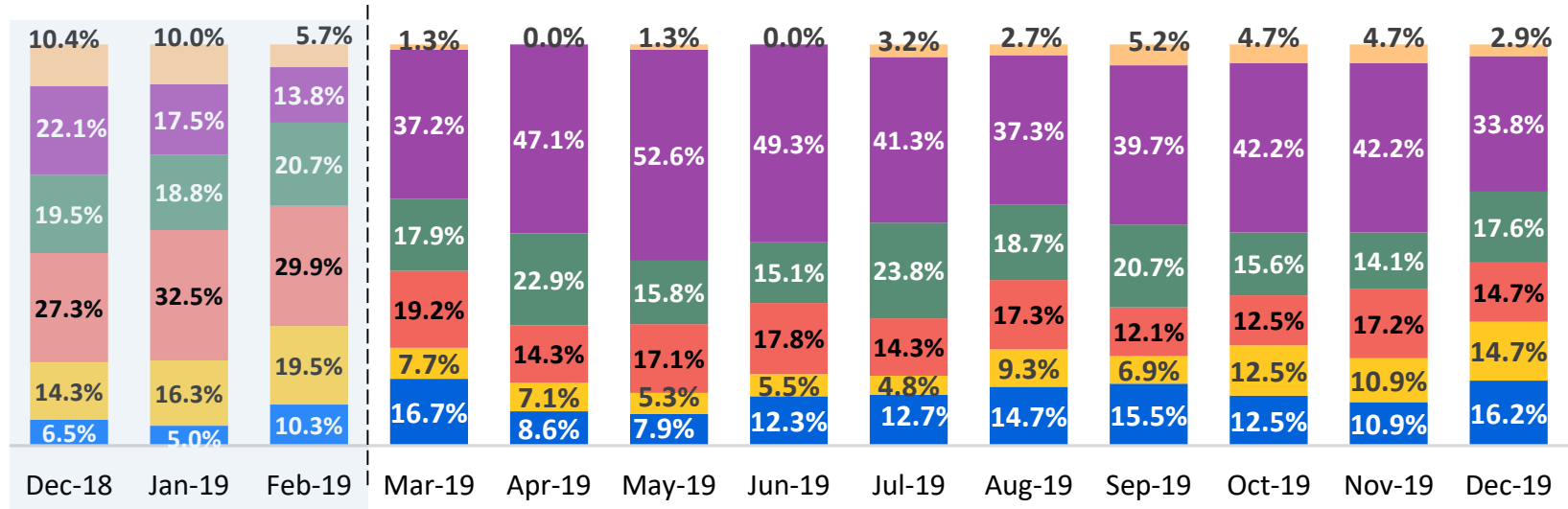
New Child Welfare Prevention Cases by Program Type*
December 2018 – December 2019



| | Dec 2018 | Jan 2019 | Feb 2019 | Mar 2019 | Apr 2019 | May 2019 | Jun 2019 | Jul 2019 | Aug 2019 | Sep 2019 | Oct 2019 | Nov 2019 | Dec 2019 | Jan-Dec 2018 | Jan-Dec 2019 |
|--------------------------------|----------|----------|----------|----------|----------|----------|----------|----------|----------|----------|----------|----------|----------|--------------|--------------|
| Number of New Preventive Cases | 849 | 875 | 767 | 891 | 844 | 843 | 806 | 855 | 880 | 765 | 786 | 655 | 817 | 9,618 | 9,784 |

* New prevention cases do not include cases transferred from one prevention program to another.

Average Daily Children’s Center Population
December 2018 – December 2019



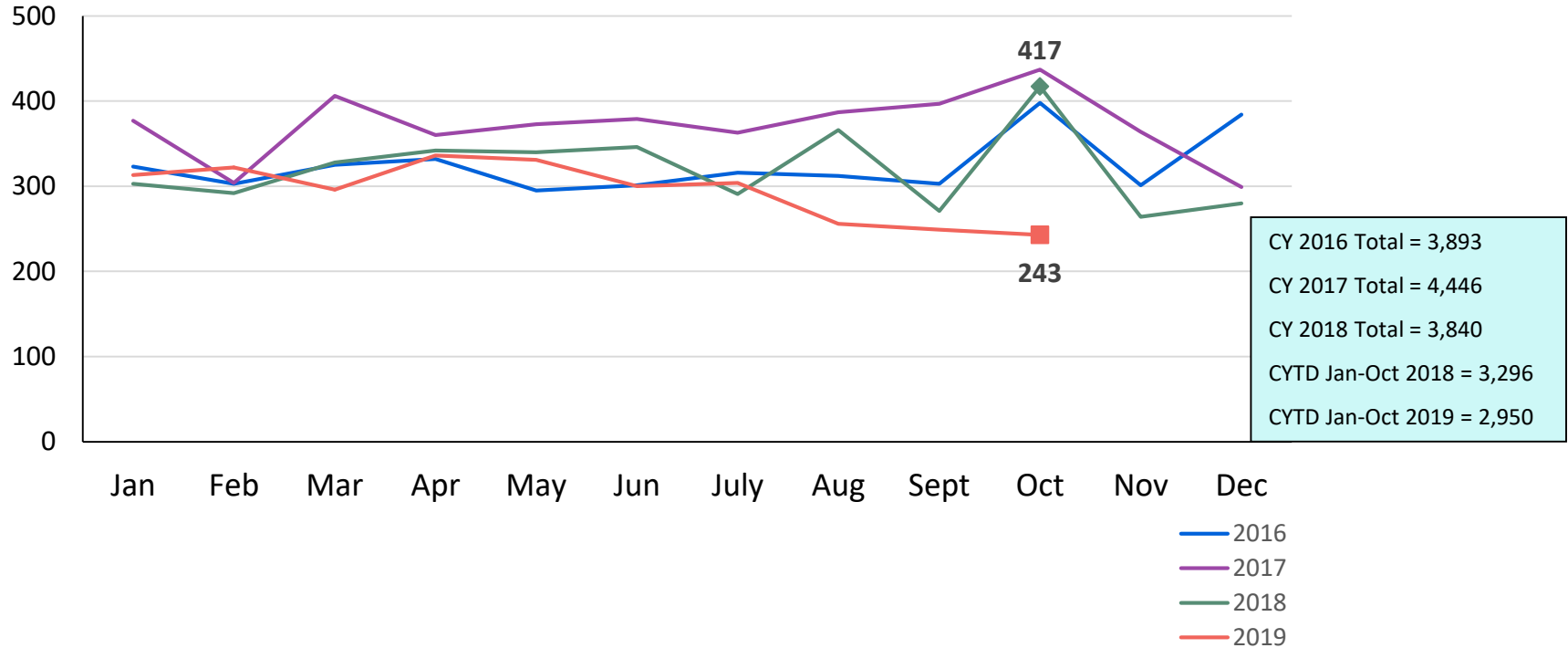
Through Feb-19: ■ Newborn - 1 year old ■ 2-6 years old ■ 7-12 years old ■ 13-15 years old ■ 16-17 years old ■ 18+ years old

Mar-19 - present: ■ Newborn - 3 years old ■ 4-6 years old ■ 7-10 years old ■ 11-13 years old ■ 14-18 years old ■ 19+ years old

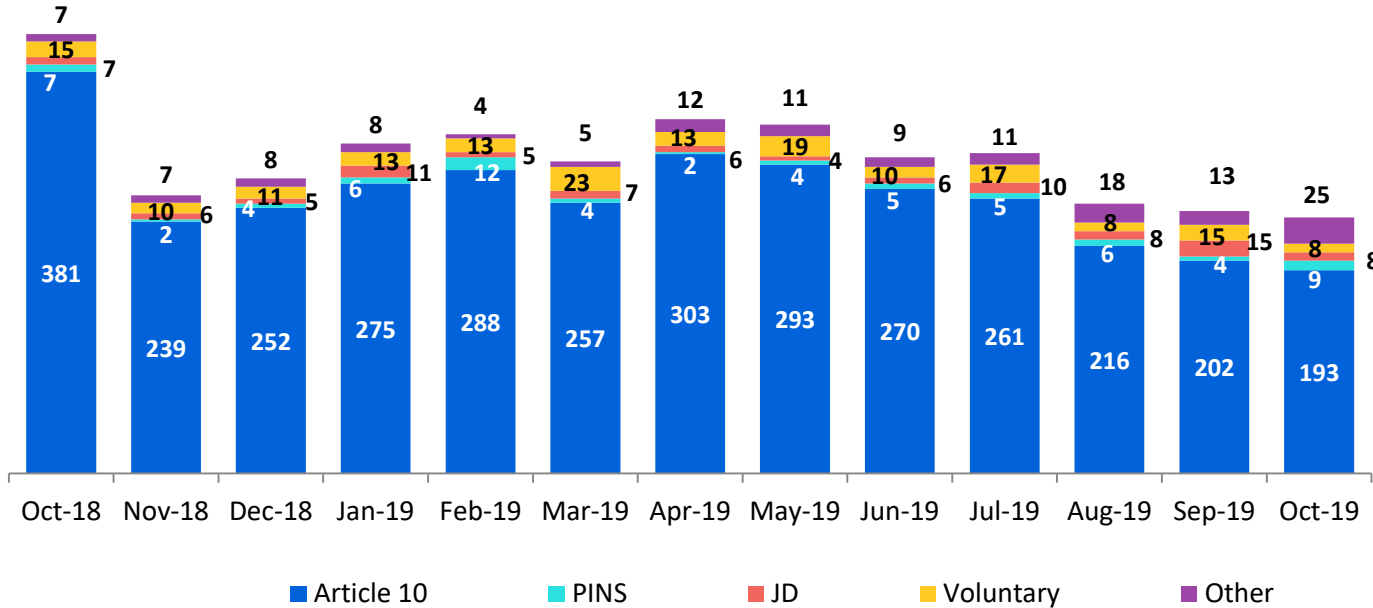
| | Dec 2018* | Jan 2019* | Feb 2019* | Mar 2019 | Apr 2019 | May 2019 | Jun 2019 | Jul 2019 | Aug 2019 | Sep 2019 | Oct 2019 | Nov 2019 | Dec 2019 | Jan-Dec 2018 | Jan-Dec 2019 |
|----------------------------|-----------|-----------|-----------|----------|----------|----------|----------|----------|----------|----------|----------|----------|----------|--------------|--------------|
| Average Number of Children | 77 | 80 | 87 | 78 | 70 | 76 | 73 | 63 | 75 | 58 | 64 | 64 | 68 | 77 | 71 |

* Different age groups were used from September 2018 to February 2019.

New Placements of Children into Foster Care
January 2016 – October 2019



Reason for New Placements of Children into Foster Care
October 2018 – October 2019

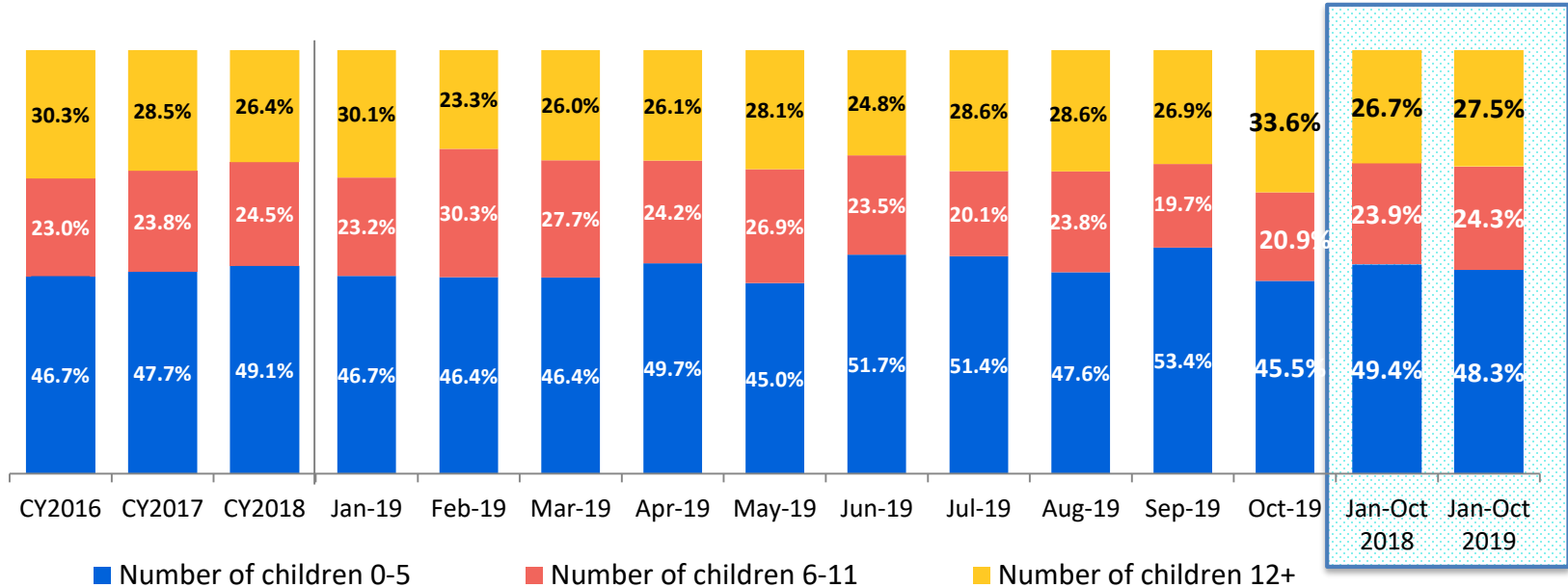


Calendar-Year-to-Date

| Jan-Oct 2018 | Jan-Oct 2019 |
|--------------|--------------|
| 83 | 116 |
| 131 | 139 |
| 83 | 80 |
| 68 | 57 |
| 2,931 | 2,558 |

| | Oct 2018 | Nov 2018 | Dec 2018 | Jan 2019 | Feb 2019 | Mar 2019 | Apr 2019 | May 2019 | Jun 2019 | Jul 2019 | Aug 2019 | Sep 2019 | Oct 2019 | CYTD Jan-Oct 2018 | CYTD Jan-Oct 2019 |
|----------------------|----------|----------|----------|----------|----------|----------|----------|----------|----------|----------|----------|----------|----------|-------------------|-------------------|
| Number of Placements | 417 | 264 | 280 | 313 | 322 | 296 | 336 | 331 | 300 | 304 | 256 | 249 | 243 | 3,296 | 2,950 |

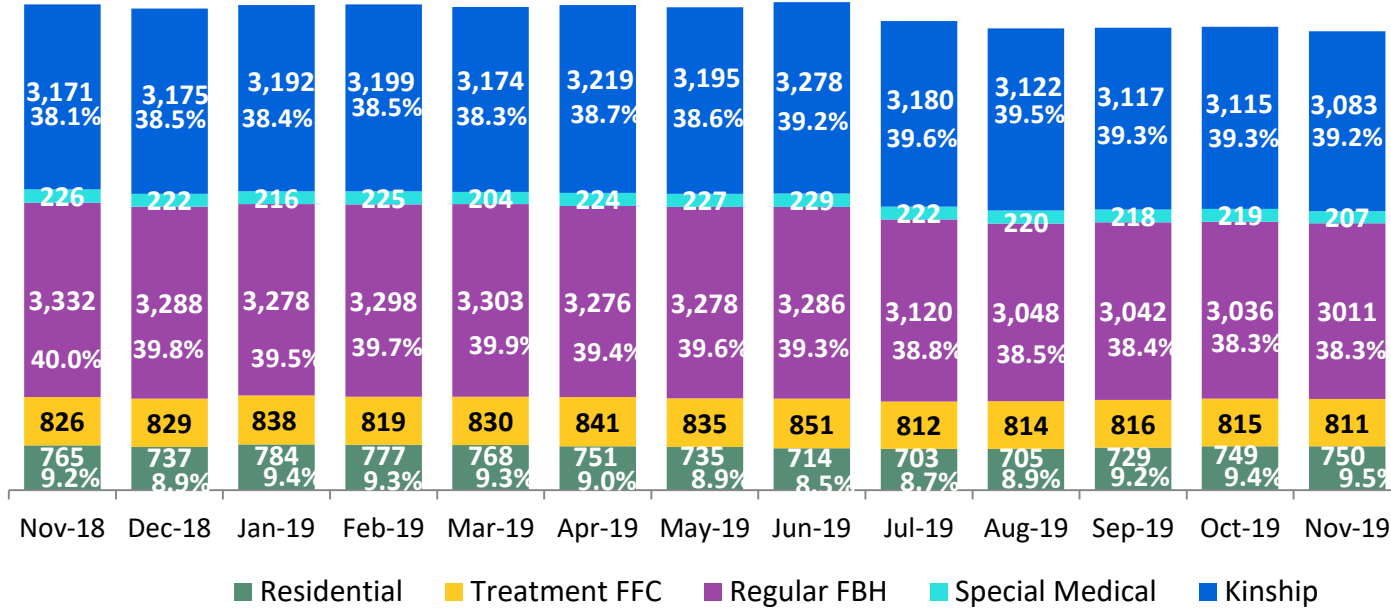
New Placements of Children into Foster Care* by Age
CY 2016 – October 2019



| | CY 2016 | CY 2017 | CY 2018 | Jan 2019 | Feb 2019 | Mar 2019 | Apr 2019 | May 2019 | Jun 2019 | Jul 2019 | Aug 2019 | Sep 2019 | Oct 2019 | CYTD Jan-Oct 2018 | CYTD Jan-Oct 2019 |
|----------------------|---------|---------|---------|----------|----------|----------|----------|----------|----------|----------|----------|----------|----------|-------------------|-------------------|
| Number of Placements | 3,680 | 4,285 | 3,746 | 302 | 317 | 289 | 330 | 327 | 294 | 294 | 248 | 234 | 235 | 3,213 | 2,870 |

*Excludes CTH placements.

Children in Foster Care *
November 2018 – November 2019 (end of month)



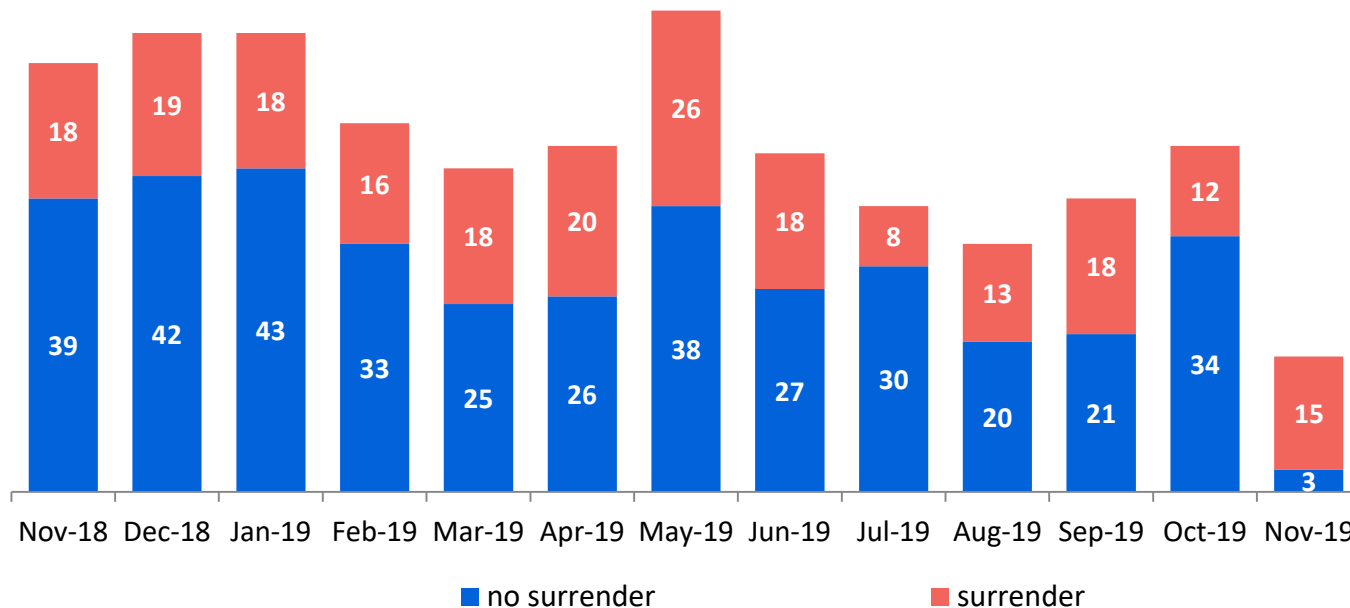
Calendar-Year-to-Date (Average)

| Jan-Nov 2018 | Jan-Nov 2019 |
|--------------|--------------|
| 3,035 | 3,170 |
| 237 | 219 |
| 3,609 | 3,180 |
| 844 | 826 |
| 785 | 742 |

| | Nov 2018 | Dec 2018 | Jan 2019 | Feb 2019 | Mar 2019 | Apr 2019 | May 2019 | Jun 2019 | Jul 2019 | Aug 2019 | Sep 2019 | Oct 2019 | Nov 2019 | CYTD Jan-Nov 2018 | CYTD Jan-Nov 2019 |
|-----------------------|----------|----------|----------|----------|----------|----------|----------|----------|----------|----------|----------|----------|----------|-------------------|-------------------|
| Number in Foster Care | 8,320 | 8,251 | 8,308 | 8,317 | 8,279 | 8,310 | 8,270 | 8,358 | 8,037 | 7,909 | 7,922 | 7,934 | 7,862 | 8,526 | 8,137 |

*Excludes CTH placements and includes children in 24 hour care and approximately 200 young children who are living in foster homes or residential care facilities with their mothers who are in foster care (8D children).

Children Freed for Adoption, Surrender by at Least One Parent
November 2018 – November 2019

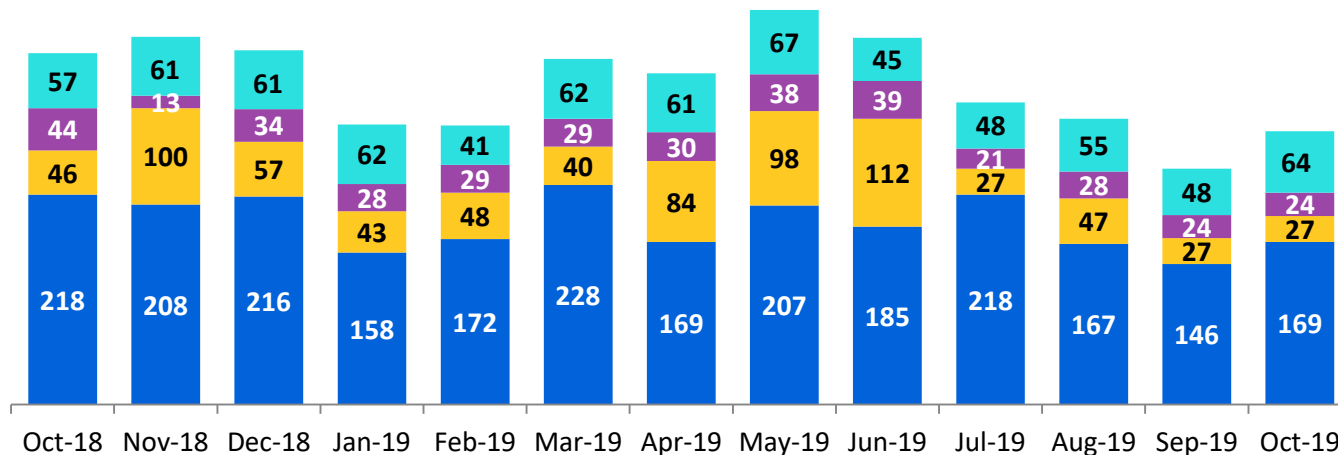


Calendar-Year-to-Date

| Jan-Nov 2018 | Jan-Nov 2019 |
|--------------|--------------|
| 272 | 182 |
| 419 | 300 |

| | Nov 2018 | Dec 2018 | Jan 2019 | Feb 2019 | Mar 2019 | Apr 2019 | May 2019 | Jun 2019 | Jul 2019 | Aug 2019 | Sep 2019 | Oct 2019 | Nov 2019 | CYTD Jan-Nov 2018 | CYTD Jan-Nov 2019 |
|---------------------------|----------|----------|----------|----------|----------|----------|----------|----------|----------|----------|----------|----------|----------|-------------------|-------------------|
| Number Freed for Adoption | 57 | 61 | 61 | 49 | 43 | 46 | 64 | 45 | 38 | 33 | 39 | 46 | 18 | 691 | 482 |

Permanency and Non-Permanency* Discharges from Foster Care**
October 2018 – October 2019



Calendar-Year-to-Date

| Jan-Oct 2018 | Jan-Oct 2019 |
|--------------|--------------|
| 567 | 553 |
| 265 | 290 |
| 653 | 553 |
| 2,085 | 1,819 |

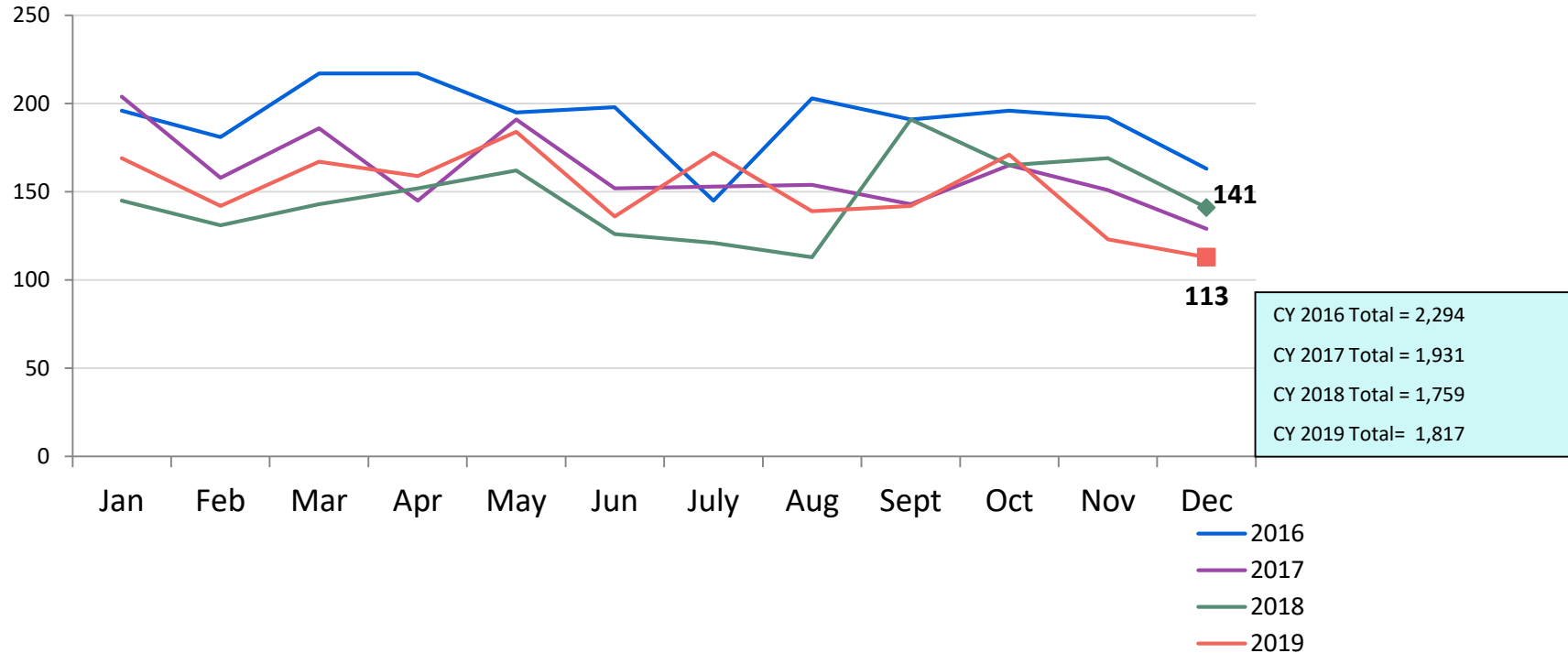
■ Reunifications ■ Adoptions ■ KinGAP ■ Non-Permanency Discharges

| | Oct 2018 | Nov 2018 | Dec 2018 | Jan 2019 | Feb 2019 | Mar 2019 | Apr 2019 | May 2019 | Jun 2019 | Jul 2019 | Aug 2019 | Sep 2019 | Oct 2019 | CYTD Jan-Oct 2018 | CYTD Jan-Oct 2019 |
|----------------------|----------|----------|----------|----------|----------|----------|----------|----------|----------|----------|----------|----------|----------|-------------------|-------------------|
| Number of Discharges | 365 | 382 | 368 | 291 | 290 | 359 | 344 | 410 | 381 | 314 | 297 | 245 | 284 | 3,570 | 3,215 |

*Non-permanency discharges include AWOL, APPLA (youth 18-20 years old discharged to self and youth who reached 21 while in care), and other discharge destinations such as psychiatric institutions and correctional facilities and discharges with unspecified destinations.

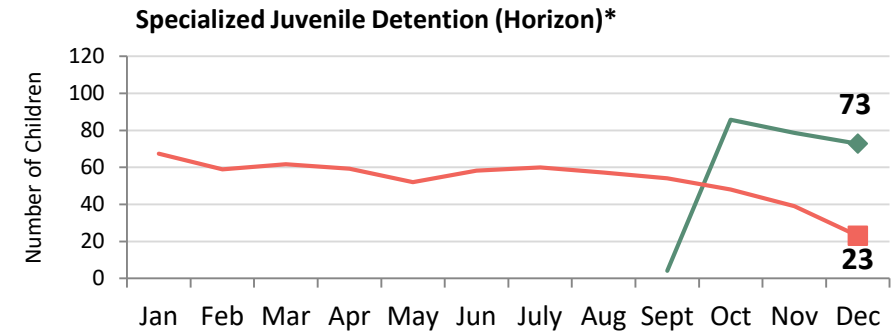
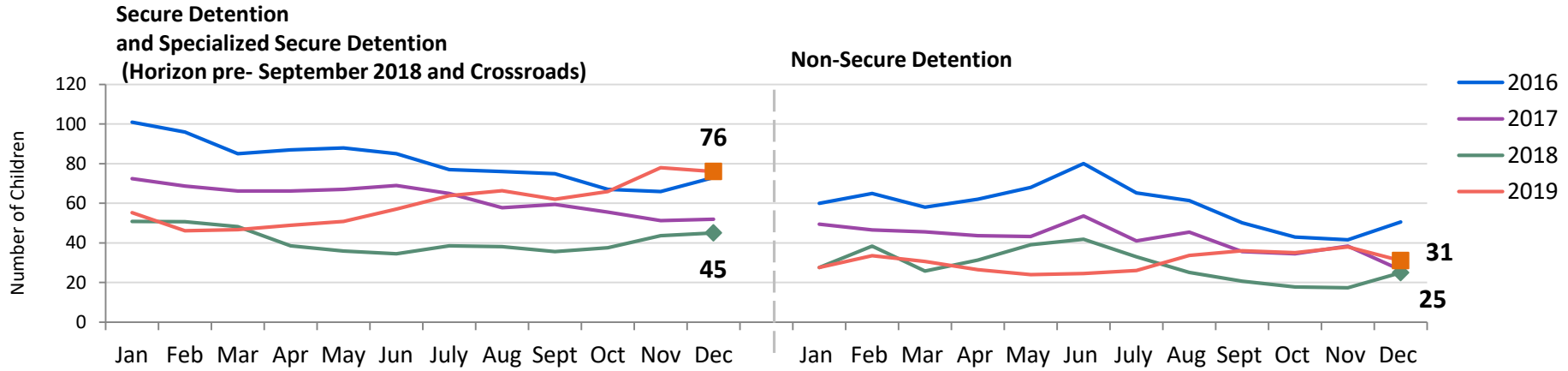
**Excludes discharges of youth from CTH placements.

Total Monthly Admissions to Detention
January 2016 – December 2019*



*Beginning in September 2018 detention admissions include admissions to the Horizon Juvenile Facility of 16 and 17 year olds moved off Rikers Island and pre-Raise the Age 17 year olds.

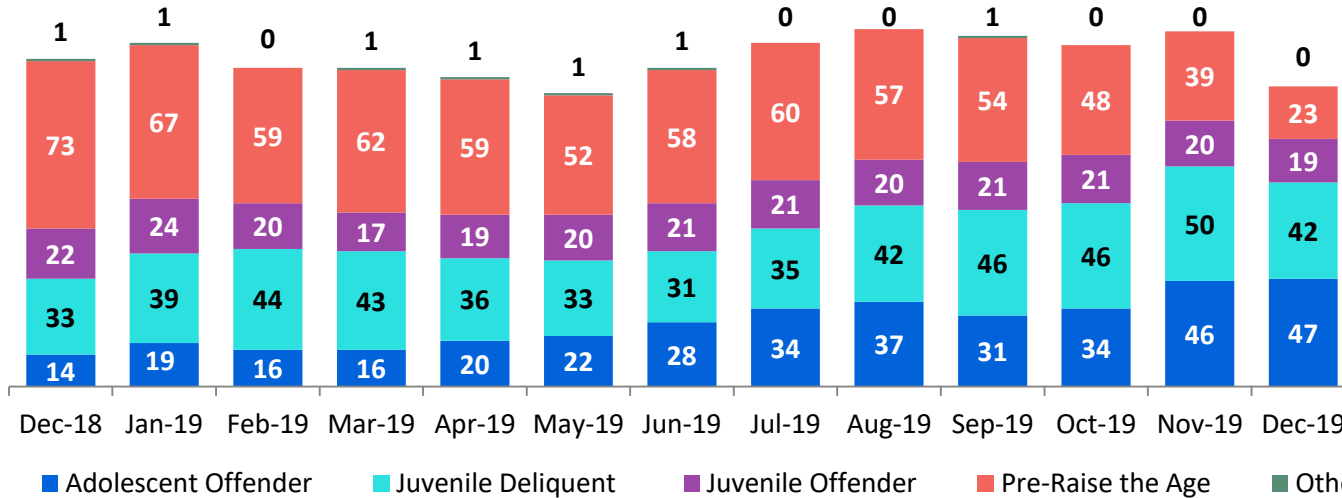
**Detention Monthly Average Daily Population
January 2016 – December 2019***



| Calendar-Year-to-Date | | |
|---|--------------|--------------|
| | Jan-Dec 2018 | Jan-Dec 2019 |
| SD and SSD (Horizon pre- Sep 2018 and Crossroads) | 40.6 | 59.9 |
| Non-Secure Detention | 28.6 | 30.6 |
| Specialized Juvenile Detention (Horizon)* | N/A | 53.2 |

*Beginning in September 2018 the Horizon Juvenile Facility is housing 16 and 17 year olds moved off Rikers Island and pre-Raise the Age 17 year olds.

Detention Total Monthly Average Daily Population by Case Type* December 2018 – December 2019



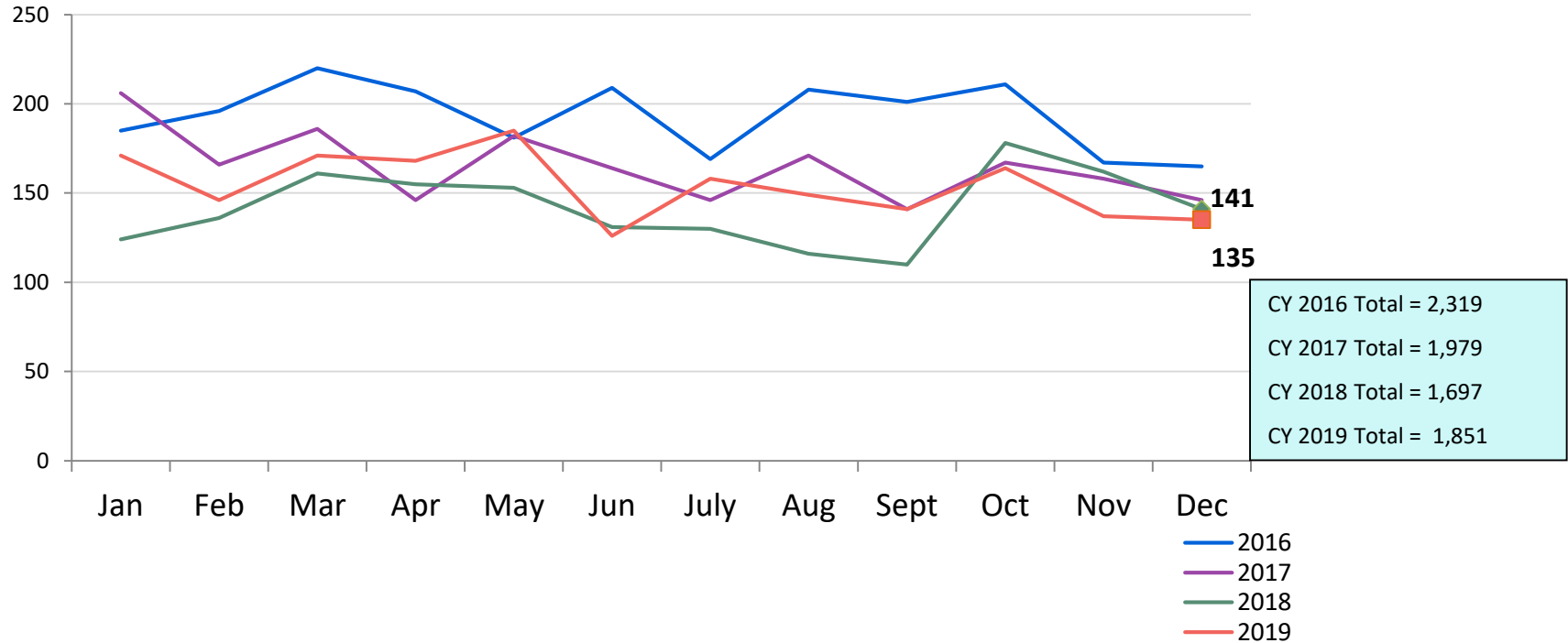
| Jan-Dec 2018 | Jan-Dec 2019 |
|--------------|--------------|
| 1.8 | 0.7 |
| N/A | 53.2 |
| 23.8 | 20.2 |
| 41.9 | 40.5 |
| N/A | 29.1 |

Total Average Daily Population

| Dec 2018 | Jan 2019 | Feb 2019 | Mar 2019 | Apr 2019 | May 2019 | Jun 2019 | Jul 2019 | Aug 2019 | Sep 2019 | Oct 2019 | Nov 2019 | Dec 2019 | Jan-Dec 2018 | Jan-Dec 2019 |
|----------|----------|----------|----------|----------|----------|----------|----------|----------|----------|----------|----------|----------|--------------|--------------|
| 143 | 150 | 139 | 139 | 135 | 127 | 140 | 150 | 157 | 152 | 149 | 155 | 131 | 90.1 | 143.7 |

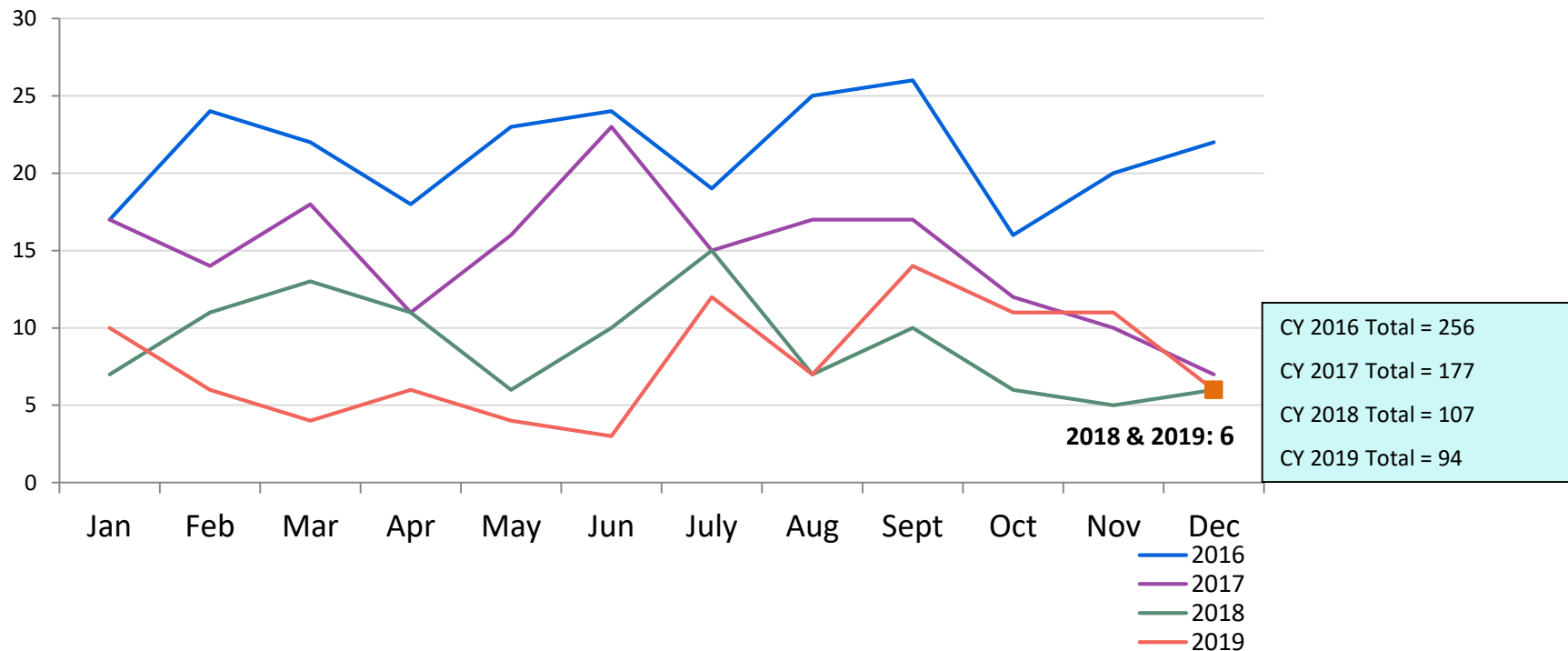
*Case Type definitions: Adolescent Offender (AO) is a person 16 years of age charged with a felony on or after 10/1/18 and a person 17 years of age charged with a felony on or after 10/1/19; Juvenile Delinquent (JD) is a person 7-15 years of age who has committed an act which would be considered a crime if the person were old enough and capable of being treated as an adult. Sixteen year olds charged with a misdemeanor (except those charged under NYS Vehicle and Traffic Law) on or after 10/1/18 and 17 year olds charged on or after 10/1/19 are also JDs.; Juvenile Offender (JO) a person 13-15 years of age with a serious violent felony charge; Pre-Raise the Age is a person who was 16 or 17 years old when transferred off Rikers Island 10/1/18 and 17 year olds charged with crimes 10/1/18- 9/30/19; and Other case type includes youth detained for other authorities and ACS warrants.

Total Monthly Releases from Detention
January 2016 – December 2019*

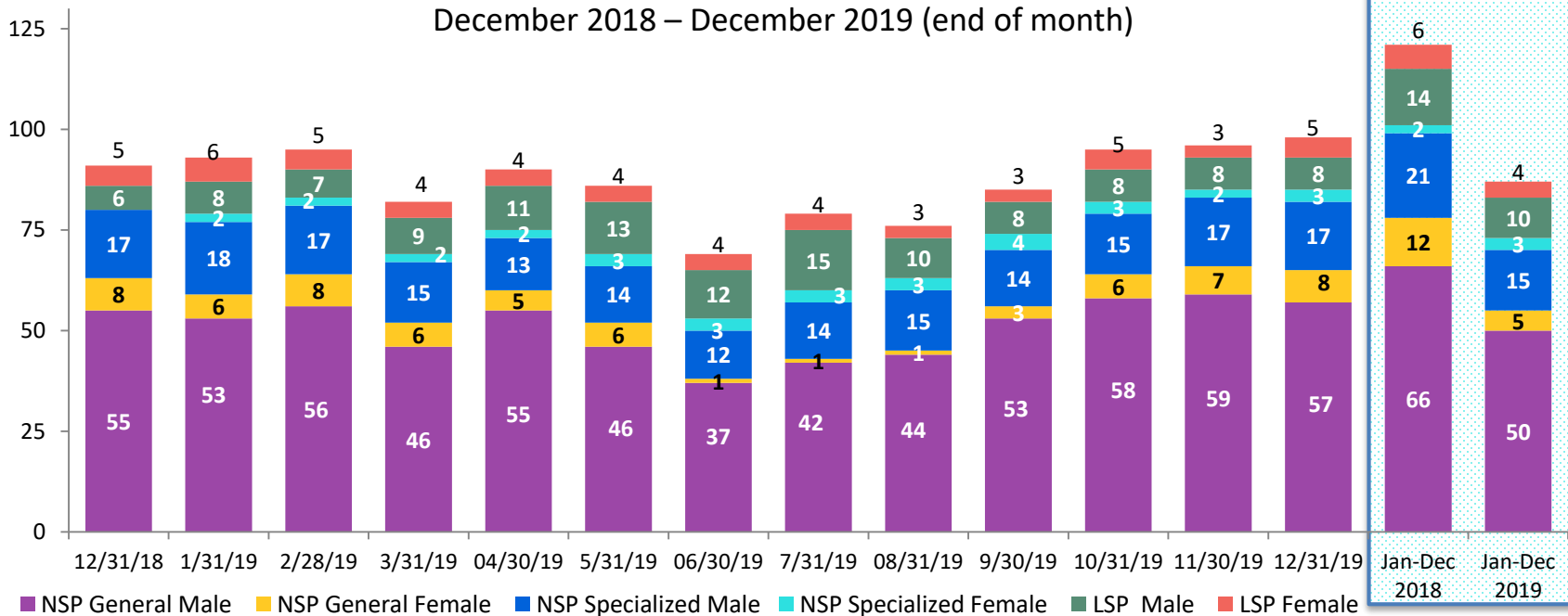


*Beginning in October 2018 detention releases include releases from the Horizon Juvenile Facility of 16 and 17 year olds moved off Rikers Island and pre-Raise the Age 17 year olds.

Close to Home Admissions*
January 2016 – December 2019

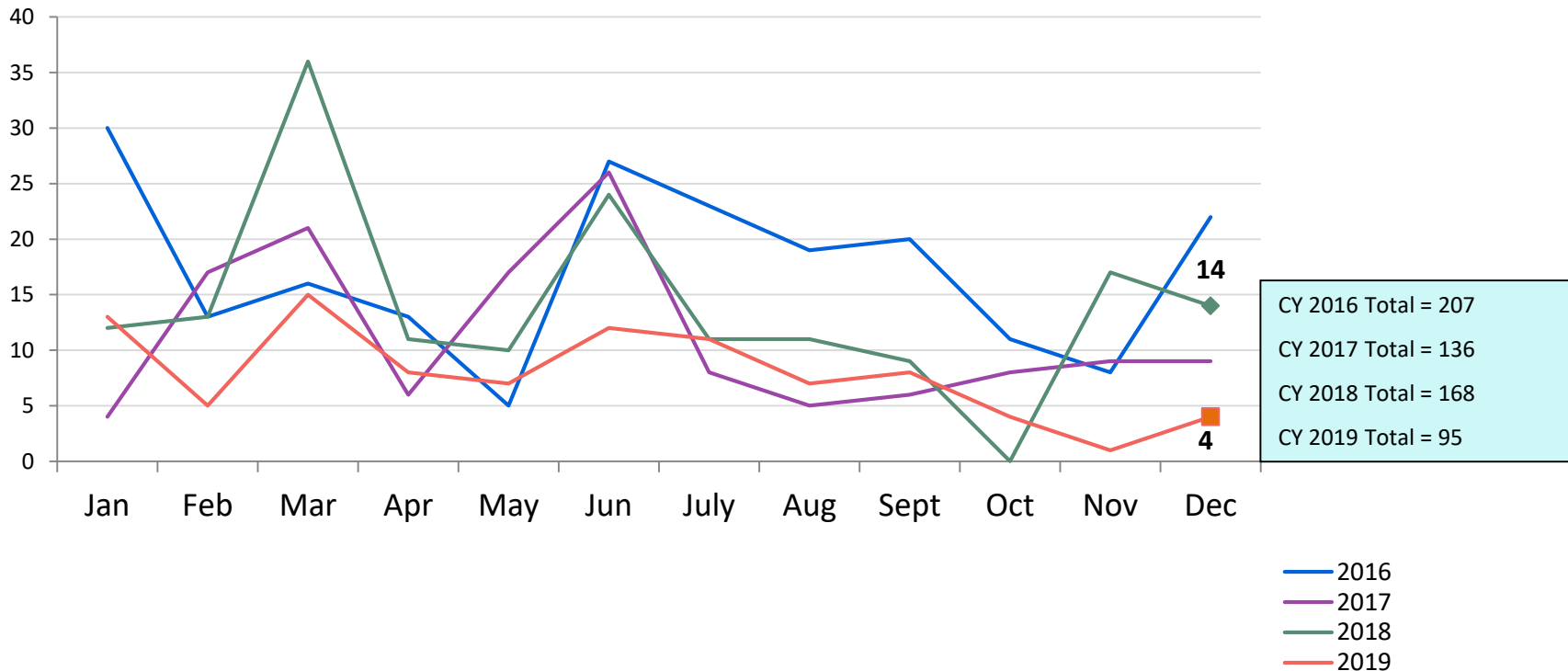


CTH Placement, in 24-hour Care
December 2018 – December 2019 (end of month)



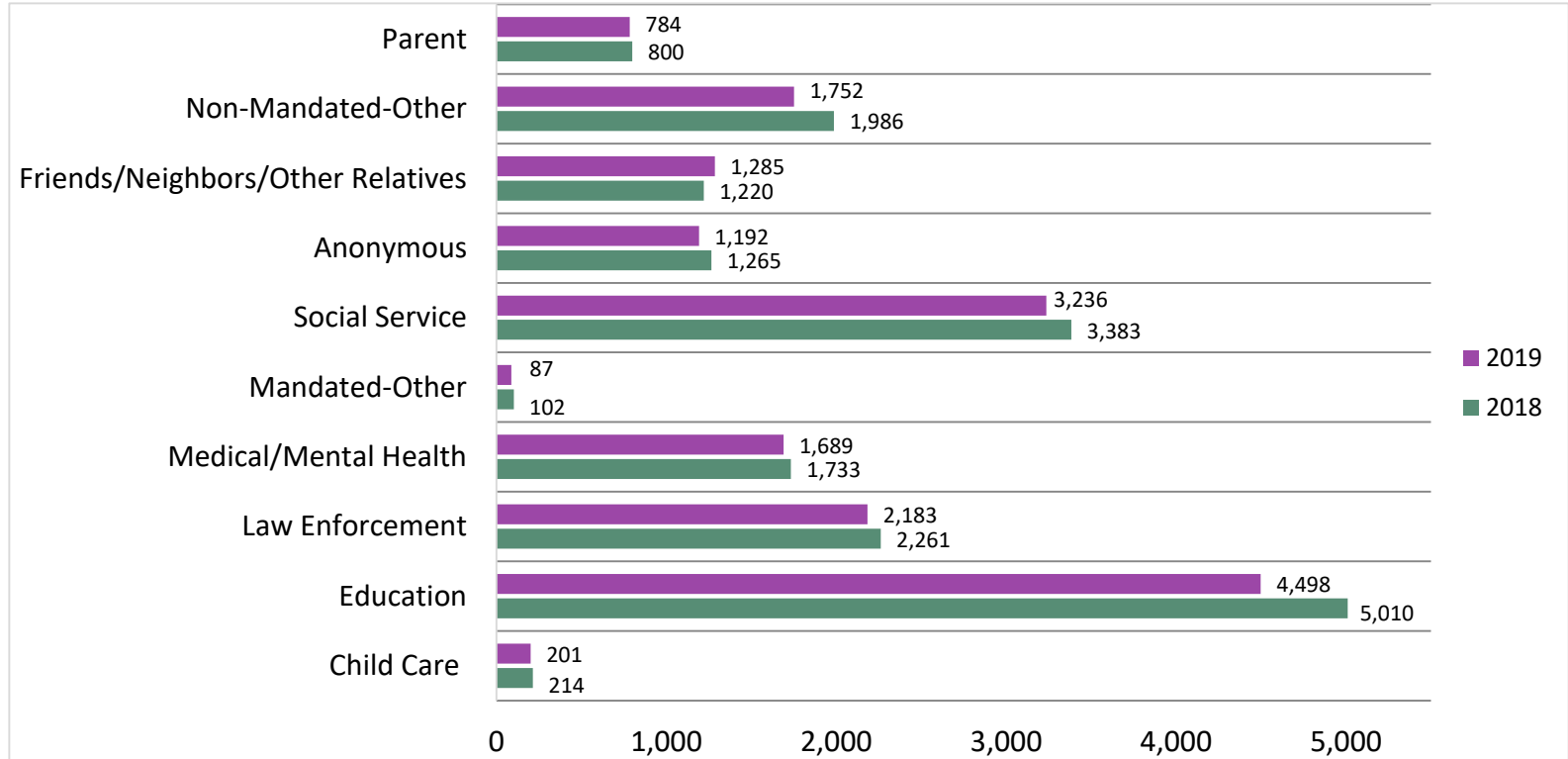
| Number in Placement | | | | | | | | | | | | | | | CYTD | CYTD |
|---------------------|----------|---------|---------|---------|---------|---------|---------|---------|---------|---------|----------|----------|----------|--------------|--------------|------|
| | 12/31/18 | 1/31/19 | 2/28/19 | 3/31/19 | 4/30/19 | 5/31/19 | 6/30/19 | 7/31/19 | 8/31/19 | 9/30/19 | 10/31/19 | 11/30/19 | 12/31/19 | Jan-Dec 2018 | Jan-Dec 2019 | |
| NSP | 80 | 79 | 83 | 69 | 75 | 69 | 53 | 60 | 63 | 74 | 82 | 85 | 85 | 100 | 73 | |
| LSP | 11 | 14 | 12 | 13 | 15 | 17 | 16 | 19 | 13 | 11 | 13 | 11 | 13 | 20 | 14 | |

Releases from Close to Home Placement to Aftercare
January 2016 – December 2019

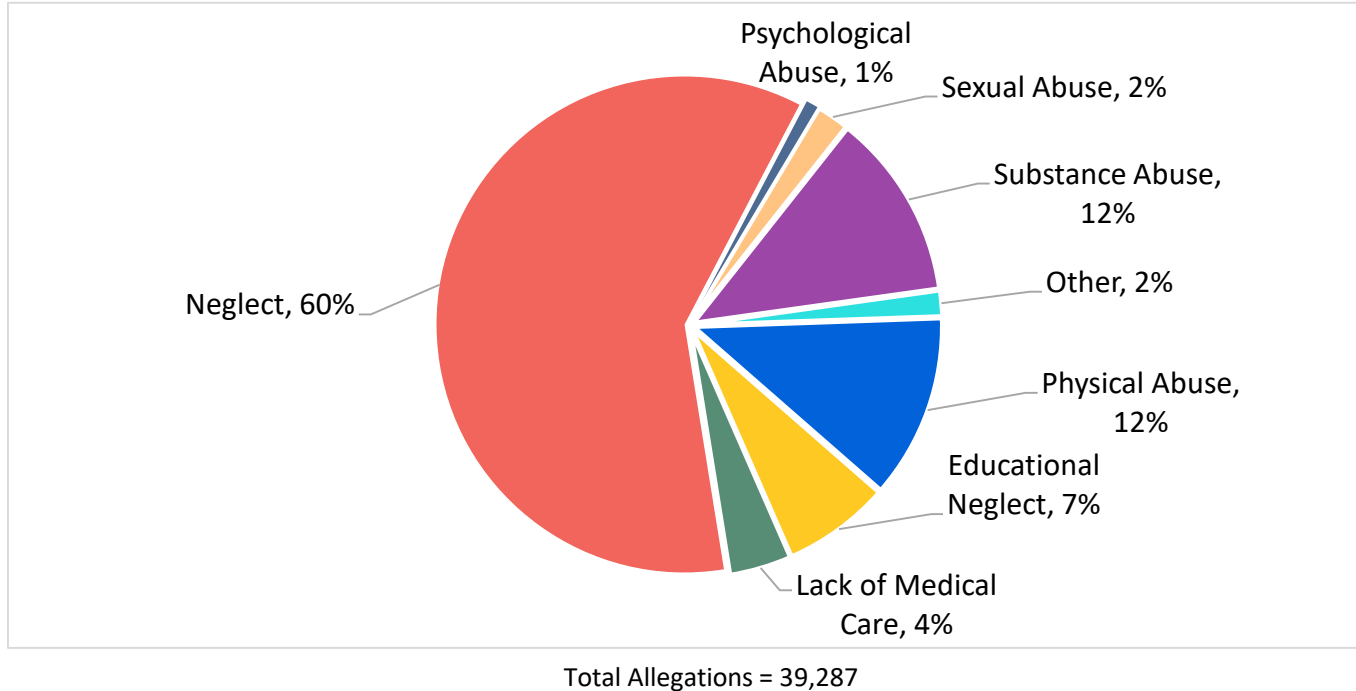


Appendix

Figure 1: SCR Intakes by Reporter Group, October 2018 – December 2018 and October 2019 – December 2019



**Figure 2: SCR Allegations
October 2019 – December 2019**



Allegations are grouped as follows: Physical Abuse - burn, fatality, fracture, choking, twisting, shaking, excessive corporal punishment, internal injuries, lacerations, bruises, welts, poisoning, noxious substances; Educational Neglect – educational neglect; Lack of Medical Care – lack of medical care; Neglect - inadequate guardianship, inadequate food, clothing, shelter, lack of supervision, malnutrition, failure to thrive, swelling, dislocations, sprains; Psychological Abuse - isolation, emotional neglect; Sexual Abuse – sexual abuse; Substance Abuse - parental drug use, child drug use; and Other -abandonment, inappropriate custodial conduct.

Figure 3: SCR Investigations by Borough
October 2018 – December 2018 and October 2019 – December 2019

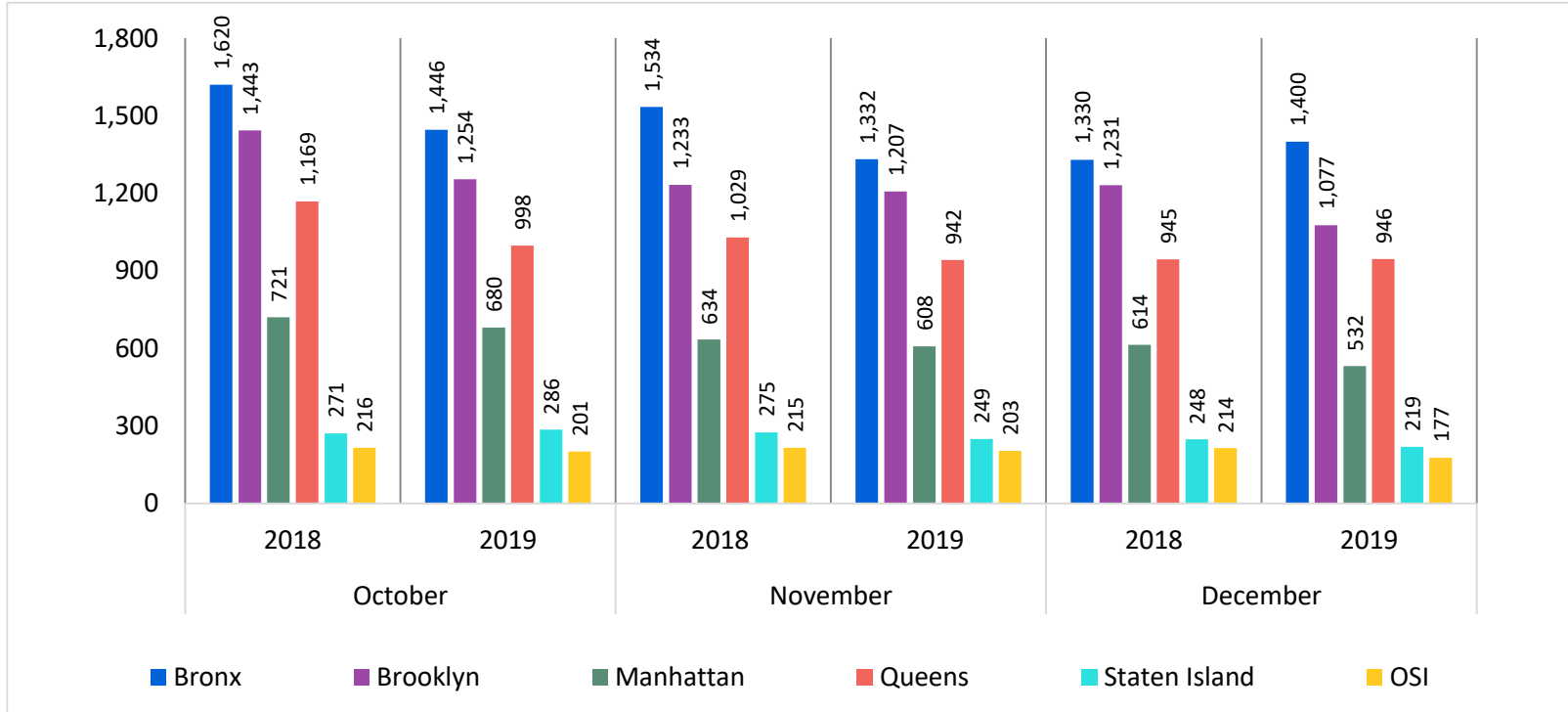


Table 1: SCR Investigations Changes by Borough
October 2018 – December 2018 and October 2019 – December 2019

| Month | Year | Bronx | Brooklyn | Manhattan | Queens | Staten Island | OSI | Other | Total |
|----------|----------|--------|----------|-----------|--------|---------------|--------|--------|--------|
| October | 2018 | 1,620 | 1,443 | 721 | 1,169 | 271 | 216 | 186 | 5,626 |
| | 2019 | 1,446 | 1,254 | 680 | 998 | 286 | 201 | 163 | 5,028 |
| | % Change | -10.7% | -13.1% | -5.7% | -14.6% | 5.5% | -6.9% | -12.4% | -10.6% |
| November | 2018 | 1,534 | 1,233 | 634 | 1,029 | 275 | 215 | 160 | 5,080 |
| | 2019 | 1,332 | 1,207 | 608 | 942 | 249 | 203 | 128 | 4,669 |
| | % Change | -13.2% | -2.1% | -4.1% | -8.5% | -9.5% | -5.6% | -20.0% | -8.1% |
| December | 2018 | 1,330 | 1,231 | 614 | 945 | 248 | 214 | 161 | 4,743 |
| | 2019 | 1,400 | 1,077 | 532 | 946 | 219 | 177 | 126 | 4,477 |
| | % Change | 5.3% | -12.5% | -13.4% | 0.1% | -11.7% | -17.3% | -21.7% | -5.6% |
| Total | 2018 | 4,484 | 3,907 | 1,969 | 3,143 | 794 | 645 | 507 | 15,449 |
| | 2019 | 4,178 | 3,538 | 1,820 | 2,886 | 754 | 581 | 417 | 14,174 |
| | % Change | -6.8% | -9.4% | -7.6% | -8.2% | -5.0% | -9.9% | -17.8% | -8.3% |

Table 2: Child Welfare Prevention Cases: New and Closed
January 2017 - December 2019

| Year | Month | New Cases | Closed Cases |
|------|--------|-----------|--------------|
| 2017 | Jan-17 | 549 | 449 |
| | Feb-17 | 601 | 920 |
| | Mar-17 | 864 | 1,032 |
| | Apr-17 | 644 | 780 |
| | May-17 | 789 | 925 |
| | Jun-17 | 908 | 944 |
| | Jul-17 | 764 | 852 |
| | Aug-17 | 874 | 864 |
| | Sep-17 | 840 | 747 |
| | Oct-17 | 870 | 762 |
| | Nov-17 | 778 | 737 |
| | Dec-17 | 817 | 728 |
| 2018 | Jan-18 | 728 | 567 |
| | Feb-18 | 776 | 783 |
| | Mar-18 | 879 | 776 |
| | Apr-18 | 794 | 613 |
| | May-18 | 756 | 857 |
| | Jun-18 | 736 | 837 |
| | Jul-18 | 808 | 856 |
| | Aug-18 | 893 | 954 |
| | Sep-18 | 752 | 755 |
| | Oct-18 | 858 | 767 |
| | Nov-18 | 789 | 699 |
| | Dec-18 | 849 | 717 |
| 2019 | Jan-19 | 875 | 708 |
| | Feb-19 | 767 | 726 |
| | Mar-19 | 891 | 856 |
| | Apr-19 | 844 | 802 |
| | May-19 | 843 | 864 |
| | Jun-19 | 806 | 841 |
| | Jul-19 | 855 | 963 |
| | Aug-19 | 880 | 929 |
| | Sep-19 | 765 | 759 |
| | Oct-19 | 786 | 875 |
| | Nov-19 | 655 | 756 |
| | Dec-19 | 817 | 748 |

Table 3: Referrals to Child Welfare Prevention Services by Source
January 2017 - December 2019

| Year | Month | Total Referrals | DCP | FC Agencies | PPRS Transfer | School | Self | Other Sources* |
|------|--------|-----------------|-------|-------------|---------------|--------|------|----------------|
| 2017 | Jan-17 | 1,046 | 78.5% | 1.4% | 6.7% | 0.7% | 3.1% | 9.7% |
| | Feb-17 | 1,067 | 77.7% | 0.8% | 6.7% | 0.8% | 3.8% | 10.1% |
| | Mar-17 | 1,383 | 79.1% | 0.6% | 6.9% | 0.9% | 4.0% | 8.5% |
| | Apr-17 | 1,116 | 81.2% | 1.0% | 5.9% | 1.1% | 1.4% | 9.4% |
| | May-17 | 1,335 | 81.9% | 0.9% | 5.5% | 1.3% | 2.8% | 7.6% |
| | Jun-17 | 1,449 | 82.3% | 0.8% | 5.9% | 1.2% | 2.9% | 6.9% |
| | Jul-17 | 1,273 | 83.3% | 0.9% | 7.9% | 0.7% | 1.9% | 5.3% |
| | Aug-17 | 1,429 | 82.7% | 0.6% | 9.3% | 0.3% | 1.7% | 5.2% |
| | Sep-17 | 1,383 | 79.6% | 1.6% | 7.7% | 0.8% | 2.8% | 7.4% |
| | Oct-17 | 1,489 | 77.5% | 1.5% | 7.5% | 1.0% | 3.1% | 9.4% |
| | Nov-17 | 1,235 | 75.1% | 1.5% | 8.8% | 2.2% | 3.6% | 8.8% |
| | Dec-17 | 1,227 | 70.5% | 1.6% | 10.2% | 2.4% | 3.7% | 11.5% |
| 2018 | Jan-18 | 1,399 | 74.5% | 1.5% | 10.7% | 1.4% | 2.9% | 9.0% |
| | Feb-18 | 1,302 | 76.8% | 1.5% | 7.5% | 1.3% | 3.5% | 9.4% |
| | Mar-18 | 1,396 | 79.7% | 1.5% | 7.4% | 1.2% | 2.6% | 7.5% |
| | Apr-18 | 1,383 | 80.0% | 1.2% | 5.9% | 1.1% | 3.1% | 8.7% |
| | May-18 | 1,189 | 78.8% | 1.3% | 7.0% | 1.0% | 3.3% | 8.7% |
| | Jun-18 | 1,284 | 81.9% | 0.5% | 7.6% | 0.9% | 3.2% | 6.0% |
| | Jul-18 | 1,403 | 82.5% | 0.7% | 8.3% | 0.6% | 2.4% | 5.5% |
| | Aug-18 | 1,391 | 82.1% | 1.7% | 6.8% | 0.4% | 2.7% | 6.3% |
| | Sep-18 | 1,135 | 84.4% | 1.5% | 7.0% | 0.9% | 4.1% | 2.1% |
| | Oct-18 | 1,345 | 78.4% | 1.5% | 8.0% | 1.2% | 3.9% | 7.0% |
| | Nov-18 | 1,107 | 73.8% | 1.4% | 9.5% | 1.5% | 4.3% | 9.5% |
| | Dec-18 | 1,179 | 68.7% | 1.7% | 10.9% | 2.7% | 5.1% | 10.9% |
| 2019 | Jan-19 | 1,373 | 74.3% | 1.7% | 8.4% | 1.6% | 3.8% | 10.3% |
| | Feb-19 | 1,096 | 77.5% | 0.9% | 7.9% | 2.2% | 2.8% | 8.7% |
| | Mar-19 | 1,292 | 72.4% | 1.2% | 10.4% | 1.5% | 4.4% | 10.1% |
| | Apr-19 | 1,299 | 76.9% | 1.5% | 7.5% | 2.8% | 3.8% | 7.4% |
| | May-19 | 1,312 | 80.0% | 1.1% | 7.9% | 1.8% | 3.2% | 6.1% |
| | Jun-19 | 1,169 | 82.5% | 1.4% | 7.4% | 0.7% | 2.7% | 5.3% |
| | Jul-19 | 1,322 | 81.3% | 0.9% | 7.1% | 0.8% | 4.5% | 5.4% |
| | Aug-19 | 1,239 | 77.4% | 1.9% | 7.4% | 0.7% | 5.9% | 6.6% |
| | Sep-19 | 1,157 | 77.4% | 1.4% | 10.2% | 1.0% | 3.5% | 6.4% |
| | Oct-19 | 1,242 | 72.1% | 1.4% | 11.4% | 1.5% | 4.4% | 9.1% |
| | Nov-19 | 990 | 68.9% | 1.6% | 11.2% | 2.6% | 6.0% | 9.7% |
| | Dec-19 | 1,223 | 74.7% | 1.5% | 9.5% | 1.4% | 5.8% | 7.1% |

Note: Data includes all referrals – accepted and rejected

*Other Community Sources includes the Department of Homeless Services, Family Court, FAP, Hospitals and Medical facilities, the NYC Housing Authority, Probation, and Sponsor Agencies.