

CITY OF NEW YORK
DEPARTMENT OF BUILDINGS

Pursuant to Administrative Code Section 27-131, the following equipment or material has been found acceptable for use in accordance with the Report of the Material and Equipment Acceptance (MEA) Division.

Patricia J. Lancaster, F.A.I.A., Commissioner

MEA148-05-M
Report of Material and Equipment Acceptance Division

Manufacturer- Marinoware, 400 Metochen Road South Plainfield, New Jersey 07080.

Trade Name- Marinoware

Product- Fire rated wall assembly for group II construction.

Pertinent Code Section(s)- 27-323 and 27-324.

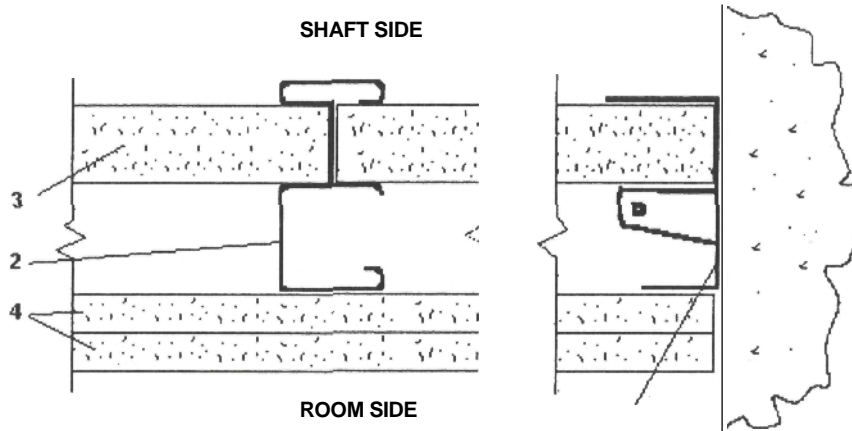
Prescribed Test(s)- RS 5-2 (ASTM E119).

Laboratory- Intertek Testing Services.

Test Report- Report No. 3072596 dated May 20, 2005.

Description- Fire rated shaftwall assembly that encloses shafts, stairwells and other vertical and horizontal shaft, using CT Stud and T Runner. The assemblies should be constructed with the following manufacturer instructions and following the Intertek Designed No. MW/WA-120-01 and MW/WA 120-02.

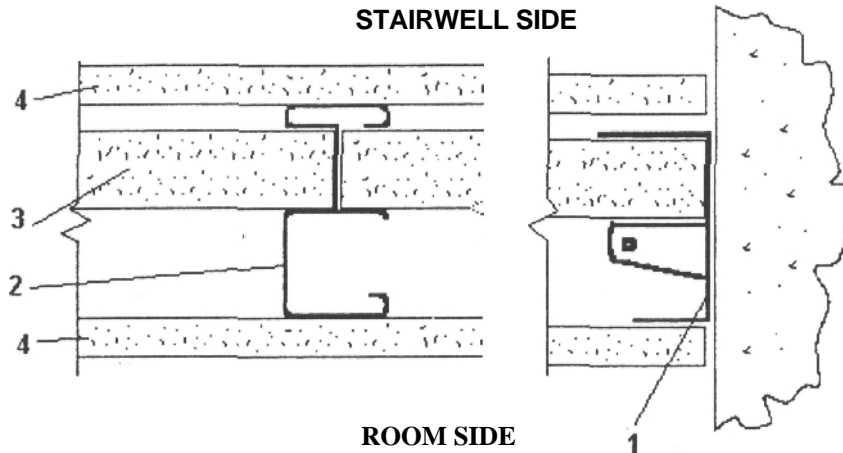
DESIGN NO. MW/WA 120-01
Assembly Rating - 2 Hours, Non-Bearing Shaftwall Assembly
Design Weight - 8.5 psf



Floor, Ceiling, Corner, and Intersection Runners: Marino Ware T shaped runner with unequal legs, 2-1/2 in. minimum depth, fabricated from minimum 25 gauge galvanized steel. Long leg of runners is oriented towards shaft. T runners fastened to structural members with steel fasteners at 24 in. on centers maximum. Gypsum board is retained by bending tabs of T runners against board surface.

2. **Steel Studs:** Marino Ware 'C-T' shaped studs, 1-1/2 in. wide by 2-1/2 in. minimum depth, fabricated from minimum 25 gauge galvanized steel. Studs are cut to length 1/2 in. to 3/4 in. less than the wall height. Friction fit to Shaftliner board edges.
3. **Gypsum Shaftliner Wallboard:** 1 in. thick Shaftliner Type X, supplied in nominal 24 in. widths. The panels are inserted against the long leg of the T runners and into the 1 in. wide slot of the 'C-T' studs.
4. **Gypsum Wallboard:** Two layers of 5/8 in. Type X or 1/2 in. Type C gypsum wallboard, oriented vertically, with edge joints staggered between layers, fastened to room side of studs using bugle-head Type S drywall screws located 12 in. on centers, except 3 in. from top and bottom of wall. Screws shall be long enough to penetrate at least 5/8 in. into studs. Outer layer is finished with paper tape and two layers of joint compound. Screw heads are finished with joint compound.

DESIGN NO. MW/WA 120-02
Assembly Rating - 2 Hours, Non-Bearing Stairwall Assembly
Design Weight - 8.5 psf



- 1. Floor, Ceiling, Corner, and Intersection Runners:** Marino Ware T shaped runner with unequal legs, 2-1/2 in. minimum depth, fabricated from minimum 25 gauge galvanized steel. Long leg of runners is oriented towards shaft. T runners fastened to structural members with steel fasteners at 24 in. on centers maximum. Gypsum board is retained by bending tabs of T runners against board surface.
- 2. Steel Studs:** Marino Ware 'C-T' shaped studs, 1-1/2 in. wide by 2-1/2 in. minimum depth, fabricated from minimum 25 gauge galvanized steel. Studs are cut to length 1/2 in. to 3/4 in. less than the wall height. Friction fit to Shaftliner board edges.
- 3. Gypsum Shaftliner Wallboard:** 1 in. thick Shaftliner Type X, supplied in nominal 24 in. widths. The panels are inserted against the long leg of the T runners and into the 1 in. wide slot of the 'C-T' studs.
- 4. Gypsum Wallboard:** One layer of 5/8 in. Type X or 1/2 in. Type C gypsum wallboard installed on each side of the wall assembly, oriented vertically, and fastened with Type S bugle-head drywall screws located 12 in. on centers, except 3 in. from the top and bottom of the wall. Gypsum board joints are finished with paper tape and two layers of joint compound. Screw heads are finished with joint compound.

Recommendation - That the above described 2 hours fire rated shaftwall assemblies, installed and secured as described, be accepted as having the fire resistance ratings listed, when members framing into the column have at least the same fire resistance rating and provided that the boards are protected from abrasion or displacements for the full height of the column. The installation of the fireproofing material shall be subject to table 3-4 and the controlled inspection requirements of Section 27-132. All shipments and deliveries of the materials comprising this assembly shall be accompanied by a certificate or label certifying that the materials shipped or delivered are equivalent to those tested and acceptable for use, as provided for in Section 27-131 of the Building Code.

Final Acceptance July 20/2005

Examined By S Derkholm