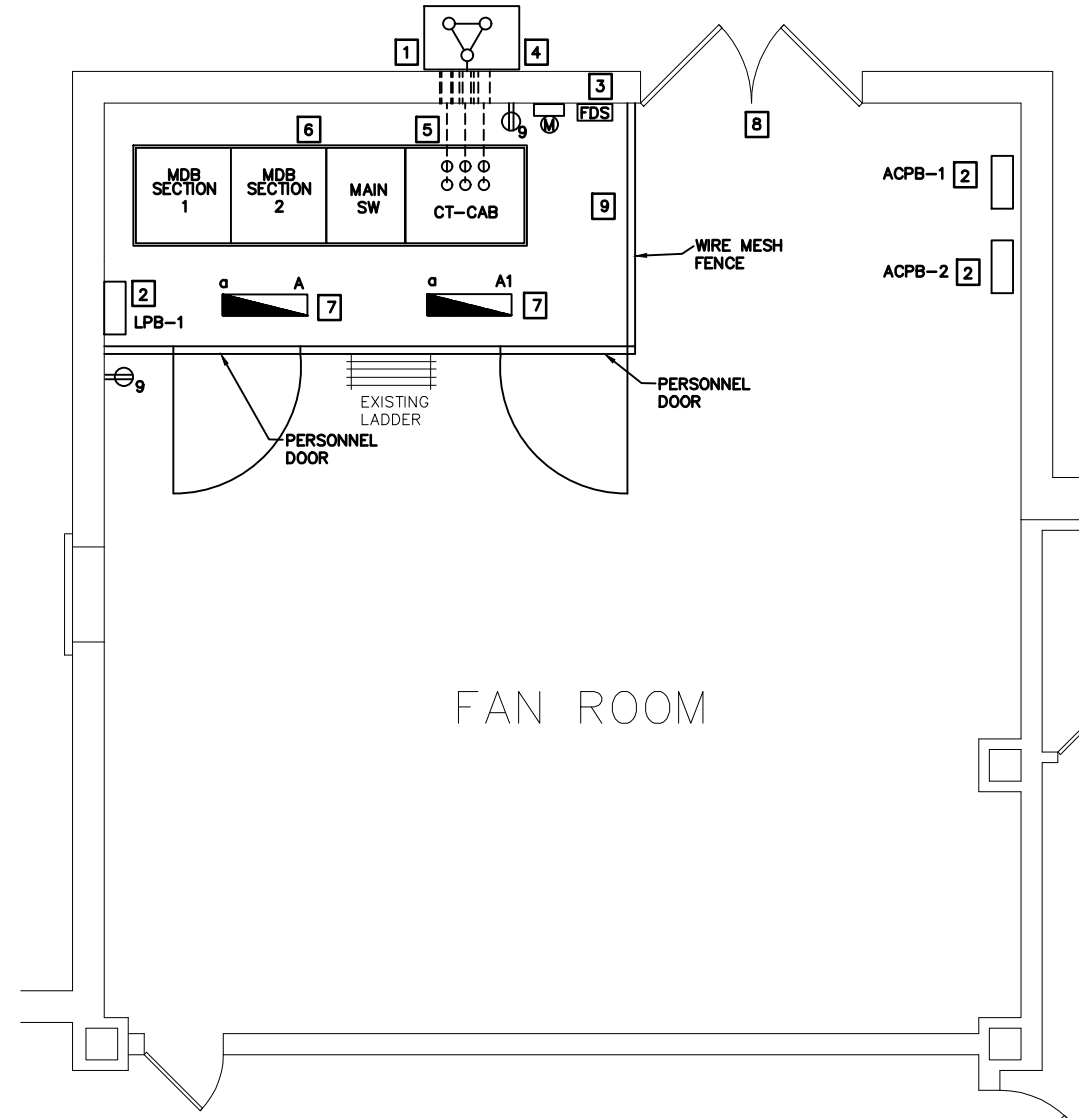


**LEGEND:**

- ① MAIN SWITCH, 650A FUSES, 800A FRAME, 3PH, 4W TO BE REMOVED
- ② DUKANE - TELEPHONE BOX TO REMAIN
- ③ TELEPHONE TERMINAL BOX TO REMAIN
- ④ EMERGENCY LIGHT PANEL LL-16/41 TO REMAIN
- ⑤ CT-CAB 600A, 208/120V, 3PH, 4W TO BE REMOVED
- ⑥ SIEMENS SW 200A, 208/120V, 3P, 4W FOR BOILER RM PNL TO BE REMOVED
- ⑦ IP PHONE BOX TO REMAIN
- ⑧ BELL TRANSFORMER TO REMAIN
- ⑨ FIRE ALARM FUSE CUT OUT TO BE REMOVED. EXISTING FIRE SIGNAL CONTROL PANEL SHALL BE RE-FED FROM FDS IN ELECTRICAL ROOM MAINTAIN CONTINUITY OF FIRE ALARM FUNCTIONALITY.

① EXISTING ELECTRICAL ROOM LAYOUT- REMOVAL PLAN  
SCALE: 1/2"-1'-0"



② ELECTRICAL ROOM PART PLAN  
SCALE: 3/8"-1'-0"

