

# New York City COVID-19 Vaccine Site Locations

## Manhattan

May 24, 2021 - May 30, 2021



[nyc.gov/vaccinefinder](https://nyc.gov/vaccinefinder)  
877-VAX-4NYC (877-829-4692)

Below are a selection of New York City run vaccine locations. To see more sites in your area, please go to [vaccinefinder.nyc.gov](https://vaccinefinder.nyc.gov) or call 877-829-4692 to schedule an appointment.

### Permanent

**Gotham Health, Gouverneur**  
227 Madison St  
Manhattan, 10002  
Moderna  
Walk-In Accepted  
7 days 7:00am-7:00pm

**NYC Vaccine Hub - Essex Crossing**  
244B Broome St  
Manhattan, 10002  
Moderna  
Walk-In Accepted  
Mon -- Wed, Closed  
Thurs -- Sun, 10:00am-8:00pm

**NYC Health Dept. - Downtown Clinic**  
1 Centre St.  
Manhattan, 10007  
Moderna  
Walk-In Accepted  
7 days 24 hrs

**NYC Vaccine Hub - Fulton Center/Google**  
119 9th Ave  
Manhattan, 10011  
Pfizer  
Walk-In Accepted  
Mon, Closed  
Tues -- Sat, 10:00am-5:00pm  
Sun, Closed

**Charles B Wang - Manhattan Chinatown**  
168 Centre St, 3M  
Manhattan, 10013  
Pfizer  
Walk-In Accepted  
Mon -- Fri, 9:30am-4:30pm  
Sat -- Sun, Closed

**Apicha Community Health Center**  
400 Broadway  
Manhattan, 10013  
Moderna  
Walk-In Accepted  
Mon, Closed  
Tues -- Fri, 10:00am-3:00pm  
Sat -- Sun, Closed

**NYC Health + Hospitals, Bellevue**  
462 1st Ave  
Manhattan, 10016  
Pfizer  
Walk-In Accepted  
7 days 7:00am-7:00pm

**Ford Foundation**  
321 E 42nd St  
Manhattan, 10017  
Johnson & Johnson  
Walk-In Accepted  
Mon -- Sat, 9:00am-5:00pm  
Sun, Closed

**NYC Vaccine Hub - American Museum of Natural History**  
200 Central Park West  
Manhattan, 10024  
Pfizer  
Walk-In Accepted  
Mon -- Tues, 9:00am-6:00pm  
Wed -- Sun, 10:00am-5:00pm

**Gotham Health, Sydenham**  
264 West 118th St  
Manhattan, 10026  
Moderna  
Walk-In Accepted  
7 days 7:00am-7:00pm

**NYC Health Dept. - Uptown Clinic**  
158 E 115th St  
Manhattan, 10029  
Johnson & Johnson  
Walk-In Accepted  
Mon -- Sat, 9:00am-5:00pm  
Sun, Closed

**NYC Health + Hospitals, Metropolitan**  
1901 1st Ave, 4A  
Manhattan, 10029  
Pfizer  
Walk-In Accepted  
7 days 7:00am-7:00pm

**NYC Vaccine Hub - Abyssinian Baptist Church**  
132 W 138th St  
Manhattan, 10030  
Pfizer  
Walk-In Accepted  
Mon, Closed  
Tues -- Sat, 9:00am-5:00pm  
Sun, Closed

**Convent Avenue Baptist Church**  
420 W 145th St  
Manhattan, 10031  
Pfizer  
Walk-In Accepted  
Mon, Closed  
Tues -- Wed, 5:30pm-10:00pm  
Thurs -- Fri, Closed  
Sat, 10:00am-4:30pm  
Sun, Closed

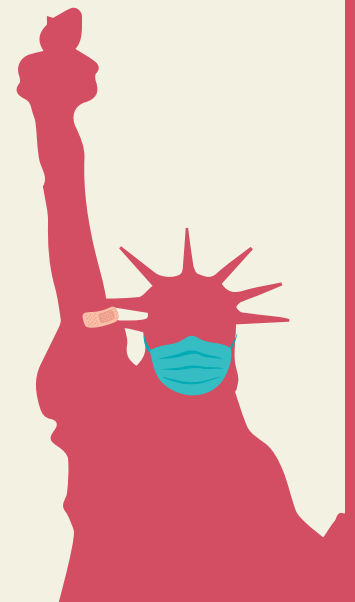
**NYC Vaccine Hub - City College of New York - North Academic Center**  
1549 Amsterdam Ave @ W 138th St  
Manhattan, 10031  
Moderna  
Walk-In Accepted  
Mon -- Wed, Closed  
Thurs -- Sun, 10:00am-8:00pm

**NYC Vaccine Hub - Yeshiva University**  
2495 Amsterdam Ave  
Manhattan, 10033  
Pfizer  
Walk-In Accepted  
Mon -- Thurs, 9:00am-7:00pm  
Fri, 9:00am-5:00pm  
Sat, Closed  
Sun, 9:00am-7:00pm

**Fort Washington Collegiate Church**  
729 W. 181 St  
Manhattan, 10033  
Pfizer  
Walk-In Accepted  
Mon -- Tues, Closed  
Wed -- Thurs, 5:30pm-9:40pm  
Fri, Closed  
Sat, 10:00am-4:30pm  
Sun, Closed

**East Harlem Council for Human Services - Taino Towers**  
240 E 123rd Street  
Manhattan, 10035  
Moderna  
Walk-In Accepted  
Mon, 9:00am-5:00pm  
Tues, Closed  
Wed, 10:00am-6:00pm  
Thurs, Closed  
Fri, 9:00am-5:00pm  
Sat -- Sun, Closed

**NYC VACCINE FOR ALL:  
SAFE, FREE, EASY**



# New York City COVID-19 Vaccine Site Locations

## Manhattan

May 24, 2021 - May 30, 2021



[nyc.gov/vaccinefinder](https://nyc.gov/vaccinefinder)  
877-VAX-4NYC (877-829-4692)

Below are a selection of New York City run vaccine locations. To see more sites in your area, please go to [vaccinefinder.nyc.gov](https://vaccinefinder.nyc.gov) or call 877-829-4692 to schedule an appointment.

**East Harlem Council for Human Services**  
- Boriken Neighborhood Health Center  
2265 3rd Avenue  
Manhattan, 10035  
Moderna  
Walk-In Accepted  
Mon -- Fri, Closed  
Sat, 9:00am-4:00pm  
Sun, Closed

**NYC Vaccine Hub - ATC Vaccination**  
Times Square (Previously NFL Experience)  
20 Times Square, 7th Ave  
Manhattan, 10036  
Pfizer, Johnson & Johnson  
Walk-In Accepted  
7 days 7:30am-7:00pm

**NYC Health + Hospitals, Harlem**  
506 Lenox Ave  
Manhattan, 10037  
Pfizer  
Walk-In Accepted  
7 days 7:00am-7:00pm

### Mobile/Pop-up

**Gompers Senior/Community Center**  
80 Pitt St  
Manhattan, 10002  
Moderna  
Walk-In Accepted  
Mon -- Wed, Closed  
Thurs -- Sun, 8:00am-6:00pm

**Rutgers Community Center**  
201 Madison St  
Manhattan, 10002  
Moderna  
Walk-In Accepted  
Mon -- Wed, Closed  
Thurs -- Sun, 8:00am-6:00pm

**Consulate of Guatemala**  
22nd Street and Park Ave S  
Manhattan, 10010  
Johnson & Johnson  
Walk-In Accepted  
Mon -- Wed, 8:00am-6:00pm  
Thurs -- Sun, Closed

**The Door**  
55 Broome Street  
Manhattan, 10013  
Johnson & Johnson  
Walk-In Accepted  
Mon -- Wed, Closed  
Thurs, 8:00am-6:00pm  
Fri -- Sun, Closed

**Central Park Pop-Up**  
Dead Road Between Sheep Meadow and the Mall below 72nd St  
Manhattan, 10021  
Pfizer  
Walk-In Accepted  
Mon -- Fri, Closed  
Sat -- Sun, 11:00am-8:00pm

**NYC Mobile Bus - Lincoln Center/Food Bank**  
150 W 62nd St  
Manhattan, 10023  
Pfizer  
Walk-In Accepted  
Mon -- Tues, Closed  
Wed, 8:00am-4:00pm  
Thurs -- Sun, Closed

**NYC Mobile Bus - Lincoln Center**  
625 Jaffe Drive  
Manhattan, 10023  
Pfizer  
Walk-In Accepted  
Mon -- Wed, Closed  
Thurs -- Fri, 12:00pm-8:00pm  
Sat -- Sun, Closed

**Douglass Addition Senior Center**  
868 Amsterdam Ave  
Manhattan, 10025  
Moderna  
Walk-In Accepted  
Mon -- Wed, Closed  
Thurs -- Sun, 8:00am-6:00pm

**Central Harlem Senior Citizens Center**  
210 West 131st St  
Manhattan, 10027  
Moderna  
Walk-In Accepted  
Mon -- Wed, Closed  
Thurs -- Sun, 8:00am-6:00pm

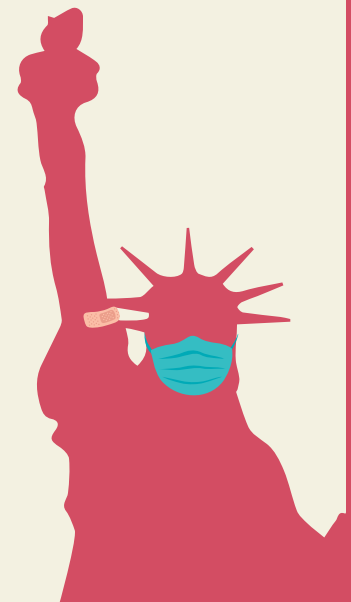
**Johnson Community Center**  
1833 Lexington Ave  
Manhattan, 10029  
Moderna  
Walk-In Accepted  
Mon -- Wed, Closed  
Thurs -- Sun, 8:00am-6:00pm

**NYC Mobile Bus - Washington Heights**  
319 Audubon Avenue  
Manhattan, 10033  
Pfizer  
Walk-In Accepted  
Mon, 12:00pm-8:00pm  
Tues -- Sun, Closed

**Community Health Fair/Covid Response**  
2939 Frederick Douglass Blvd  
Manhattan, 10039  
Johnson & Johnson  
Walk-In Accepted  
Mon -- Tues, Closed  
Wed, 8:00am-6:00pm  
Thurs -- Sun, Closed

**NYC Mobile Bus - Jackie Robinson Park**  
128 Bradhurst Avenue  
Manhattan, 10039  
Pfizer  
Walk-In Accepted  
Mon -- Fri, Closed  
Sat -- Sun, 11:00am-7:00pm

**Madison Square Garden - Pennsy**  
2 Pennsylvania Plaza, New York, NY 10121  
Manhattan, 10121  
Moderna  
Walk-In Accepted  
Mon, Closed  
Tues, 10:00am-6:00pm  
Wed, Closed  
Thurs, 10:00am-6:00pm  
Fri -- Sun, Closed



**NYC VACCINE FOR ALL:  
SAFE, FREE, EASY**