

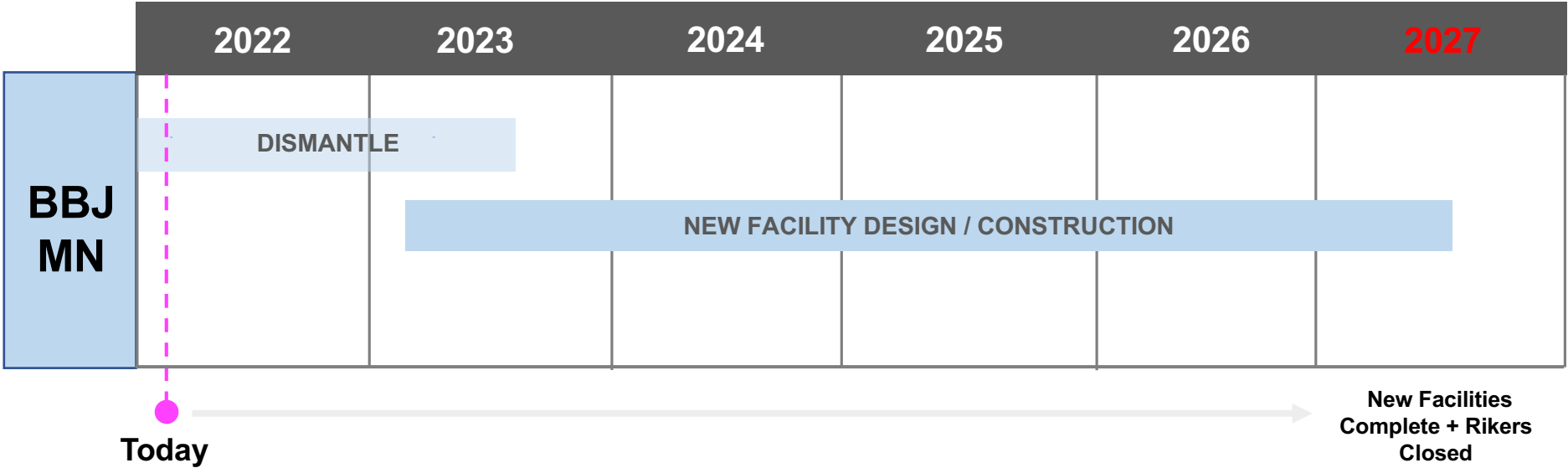
---

# BOROUGH-BASED JAILS

## MANHATTAN DETENTION COMPLEX ARTWORK CONSERVATION PLAN



# BBJ MANHATTAN ANTICIPATED SCHEDULE



# MANHATTAN DETENTION COMPLEX (MDC)



# MANHATTAN DETENTION COMPLEX



CENTRE ST AND WHITE ST



BAXTER ST AND WHITE ST



VIEW FROM CENTRE ST LOOKING SOUTH-EAST



VIEW FROM BAXTER ST LOOKING SOUTH



# MDC ARTWORK HISTORY

1938	Construction begins on Art Deco style Manhattan Criminal Court House and Manhattan House of Detention complex designed by Corbett and Meyers
1940	Rene Chambellan reliefs installed at new Manhattan House of Detention (MDC South Tower)
1974	Manhattan House of Detention (MDC South Tower) vacated
1982	NYC Percent for Art law passed
1983	Manhattan House of Detention building (MDC South Tower) gut-renovated
1985	Kit-Yin Snyder and Richard Haas commissioned through Percent for Art Program for new MDC North Tower project
1989	PDC Award for Excellence in Design / <i>Judgements of Solomon and Pao Kung</i> and <i>Immigration on the Lower East Side of New York</i> installed
1990	MDC North Tower designed by Urbahn Architects and Litchfield Grosfeld Associates opens
1992	<i>Justice</i> installed / Public controversy over the perceived negative depiction of Latino people in Panel 6 of <i>Immigration on the Lower East Side of New York</i> / Haas paints over the controversial panel as he considers alternative scene
1997	Haas repaints Panel 6 with new scene after consultation with community members
2022	MDC dismantle project begins / PDC submissions for artwork conservation and removal

# MDC ARTISTS

## KIT-YIN SNYDER

b. 1935 Guangzhou China



## RICHARD HAAS

b. 1936 Spring Green, WI



## RENE PAUL CHAMBELLAN

b. 1893 Union City, NJ; d. 1955 Jersey City, NJ





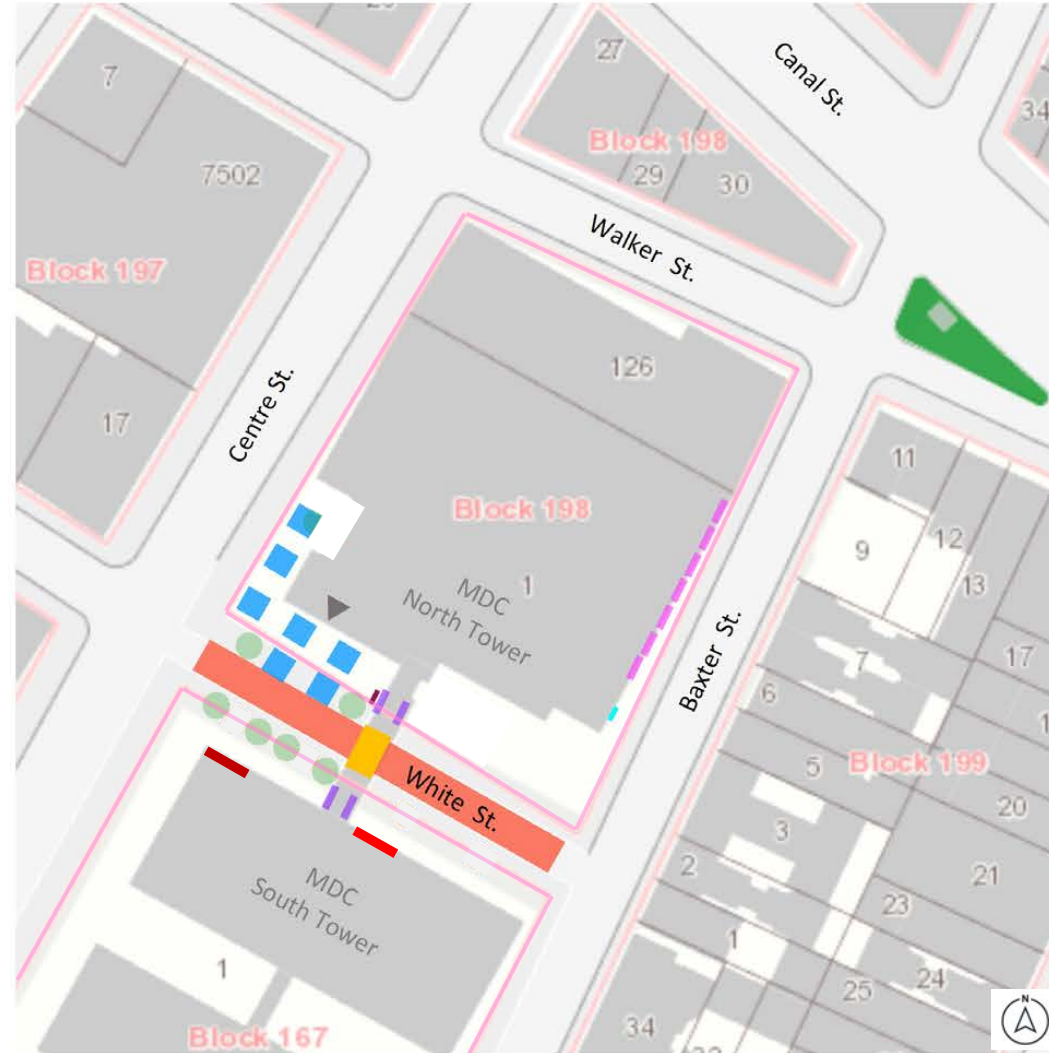
# MDC ARTWORK LOCATIONS

## Kit-Yin Snyder Artworks


*Justice* (1992)

-  **Solomon's Throne**  
Sculpture on roof of pedestrian bridge
-  **Pavement Design (Upright)**  
Paving pattern on White St.
-  **The Seven Columns of the Temple of Wisdom**  
Seven sculptures on terrace and sidewalk

-  Snyder artwork plaque
-  Haas artwork plaque



## Richard Haas Artworks


 **Immigration on the Lower East Side of New York** (1989-1997)

Seven painted mural panels on second story of building exterior

 **The Judgements of Solomon and Pao Kung** (1989)

Four cast cement relief medallions at exterior corners of pedestrian bridge

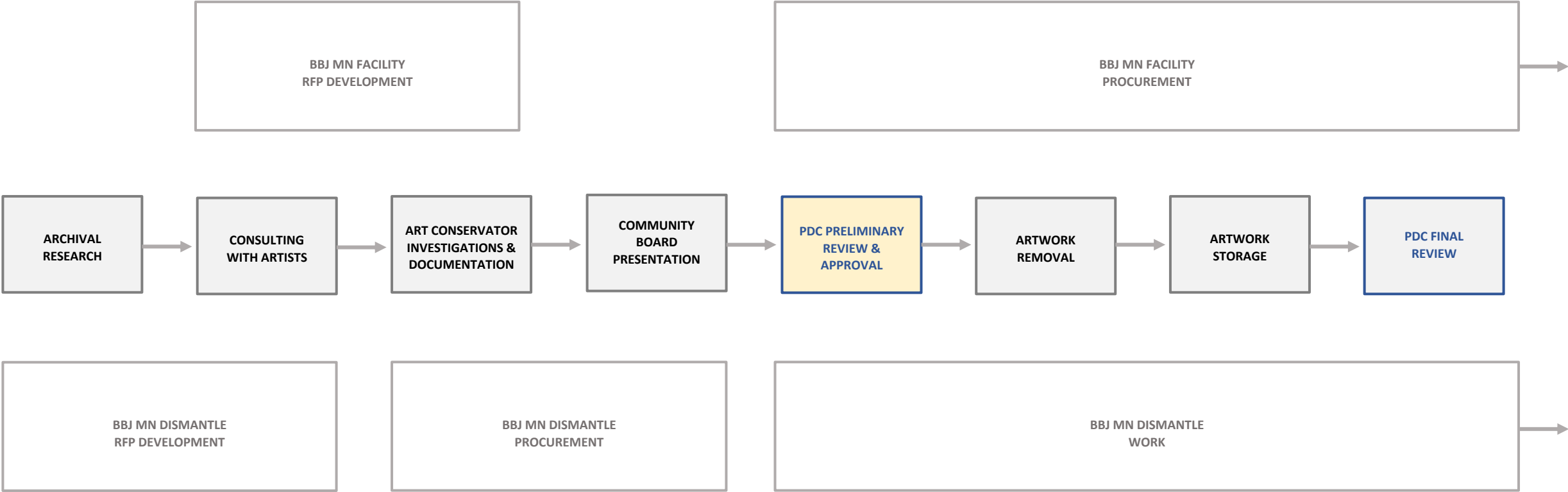
## Rene Chambellan Artworks

 **Enlightenment** (c.1940)  
Cast bronze relief panel

 **Arms of the City of New York** (c.1940)  
Cast bronze relief panel

# ARTWORK REMOVAL PLANNING & REVIEW PROCESS

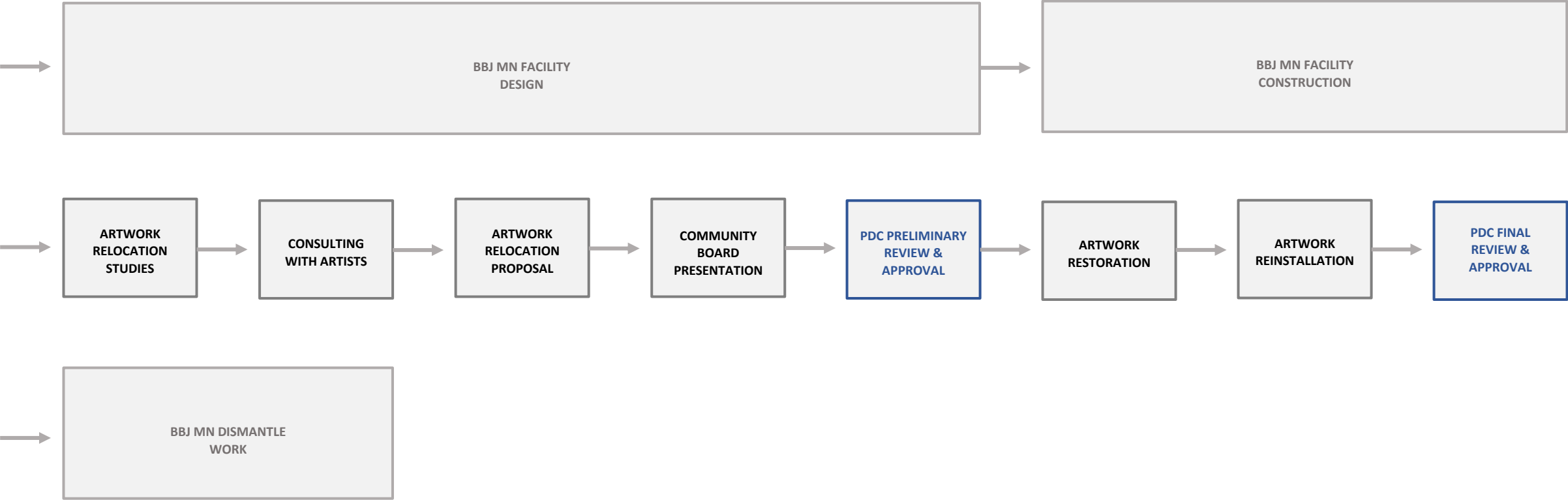
2019-2022





# ANTICIPATED ARTWORK RELOCATION PLANNING & REVIEW PROCESS

2023-2027



# RENE CHAMBELLAN ARTWORKS



## Rene Chambellan Artworks

- ***Enlightenment*** (c.1940)  
Cast bronze relief panel
- ***Arms of the City of New York*** (c.1940)  
Cast bronze relief panel

# RENE CHAMBELLAN ARTWORKS



ARMS OF THE CITY OF NEW YORK



ENLIGHTENMENT



# RENE CHAMBELLAN ARTWORKS





# RENE CHAMBELLAN ARTWORKS





# RENE CHAMBELLAN ARTWORKS



ARMS OF THE CITY OF NEW YORK



ENLIGHTENMENT

# RENE CHAMBELLAN ARTWORKS

## CONSERVATOR FINDINGS

- Bronze relief panels can be removed from site
- Artworks are in good condition overall, with cleaning and restoration recommended



ARMS OF THE CITY OF NEW YORK

DARK PAINT HAS BEEN APPLIED  
OVER BRONZE



ENLIGHTENMENT

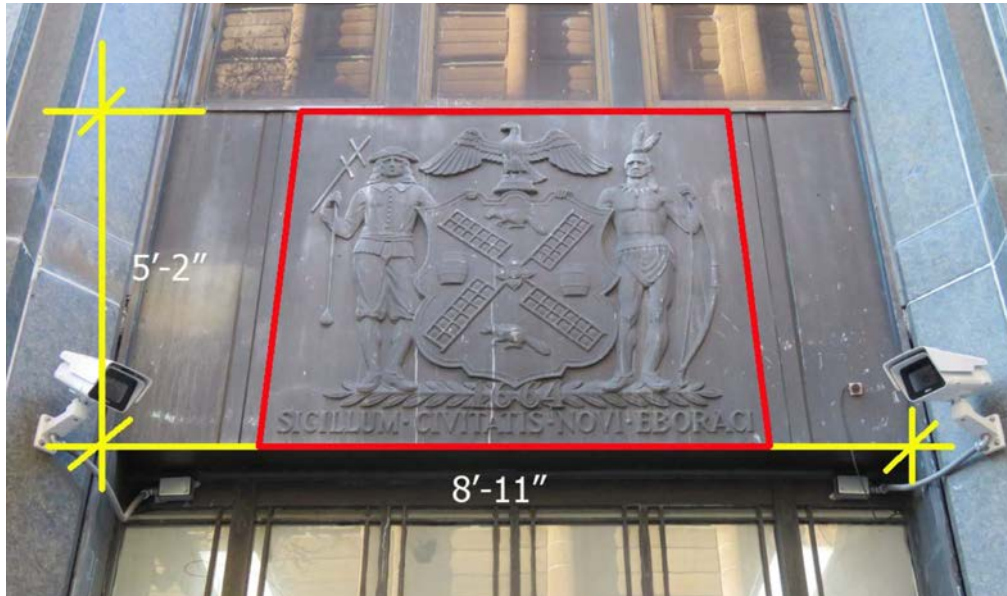
HEAVY OXIDATION ON BRONZE SURFACE HAS CREATED  
AN UNEVEN VERDIGRIS PATINA



# RENE CHAMBELLAN ARTWORKS

## PROPOSED PLAN: SALVAGE

- Photograph and document existing installation
- Carefully remove and store bronze panels
- Plan for conservation and re-installation, at the new BBJ MN Facility or at an alternative site



ARMS OF THE CITY OF NEW YORK



ENLIGHTENMENT

— AREA PROPOSED FOR SALVAGE



# KIT-YIN SNYDER ARTWORK – JUSTICE



SOLOMON'S THRONE

THE SEVEN COLUMNS OF THE  
TEMPLE OF WISDOM

PAVEMENT DESIGN  
(UPRIGHT)

# SOLOMON'S THRONE

■ **Solomon's Throne**  
Sculpture on roof of pedestrian bridge





# SOLOMON'S THRONE



“The central focus will be the throne of the Old Testament judge King Solomon. The six symbolic steps leading up to the throne will form a pediment along the top of the bridge. ...The metaphorical “throne of justice” will link together the two detention centers physically and symbolically.”

# SOLOMON'S THRONE



## CONSERVATOR FINDINGS

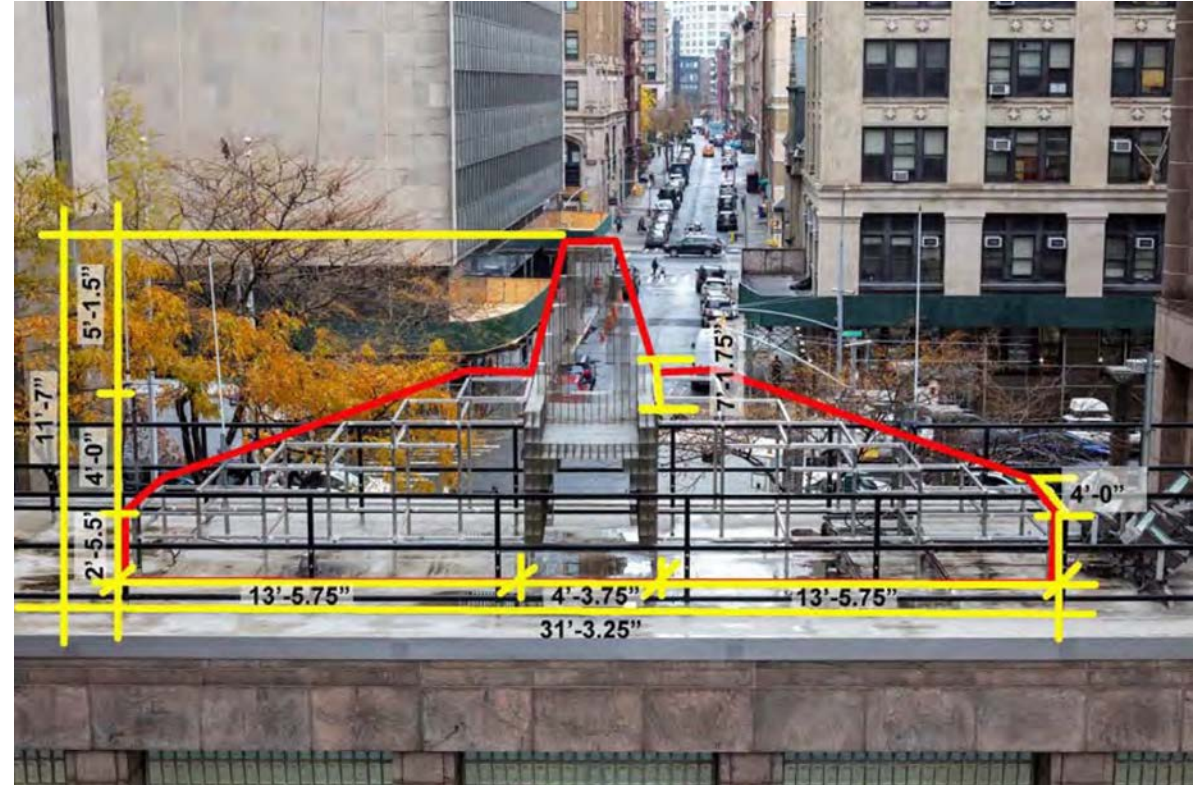
- Sculpture can be removed from site
- Artwork is in good condition overall with minor cleaning and repairs recommended



# SOLOMON'S THRONE

## PROPOSED PLAN: SALVAGE

- Photograph and document existing installation
- Carefully remove and store sculpture
- Plan for conservation and reinstallation, at the new BBJ MN Facility or at an alternative site



— AREA PROPOSED FOR SALVAGE

# THE SEVEN COLUMNS OF THE TEMPLE OF WISDOM





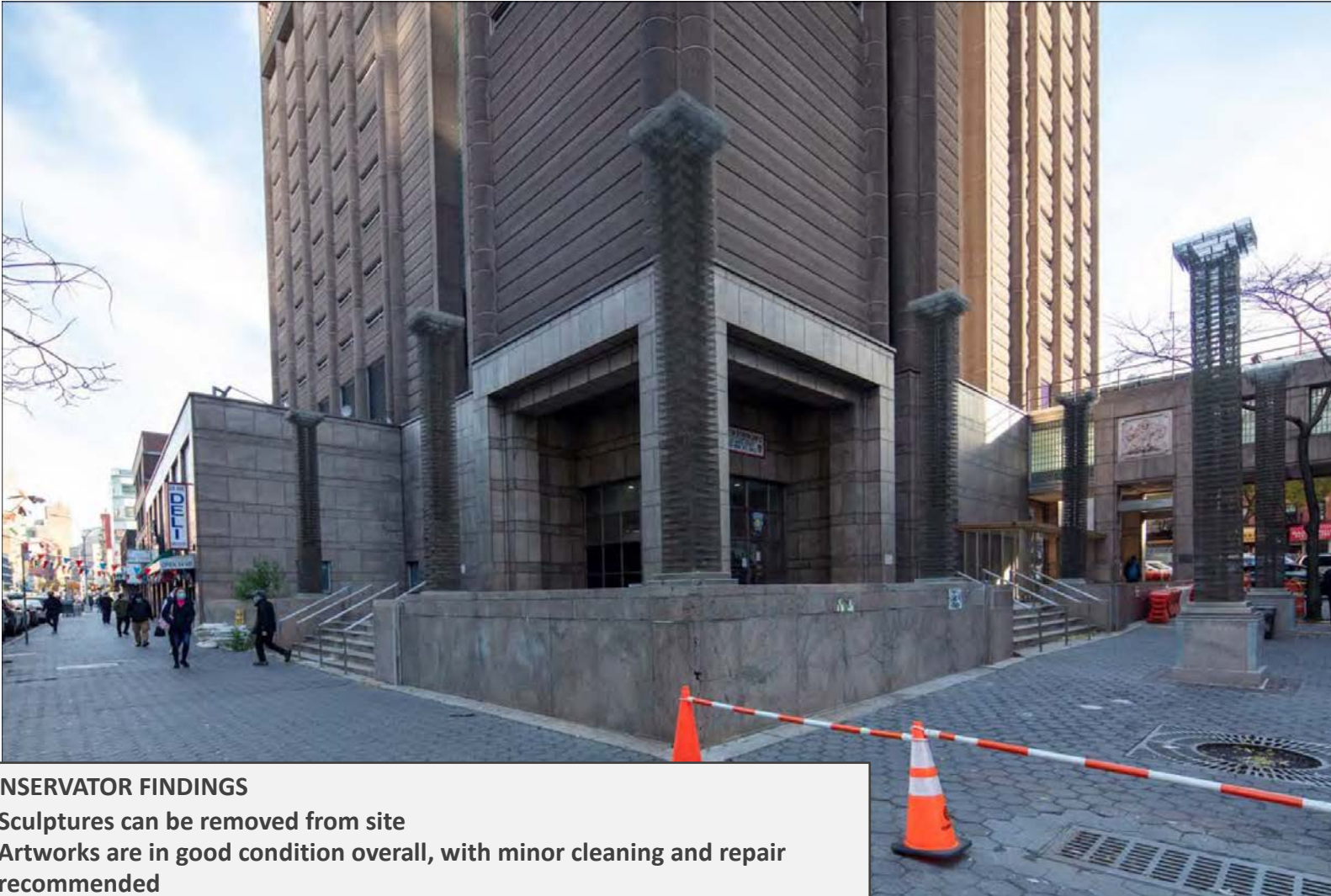
# THE SEVEN COLUMNS OF THE TEMPLE OF WISDOM



“There will be a pair of columns leading to the *gate* (the bridge), appropriate for a hall of justice. Another group of columns will be placed at the administrative entrance (in all 7 columns representing the Seven Pillars of Wisdom in the Temple of Solomon), suggesting a portico symbolizing civic justice.”



# THE SEVEN COLUMNS OF THE TEMPLE OF WISDOM



## CONSERVATOR FINDINGS

- Sculptures can be removed from site
- Artworks are in good condition overall, with minor cleaning and repair recommended

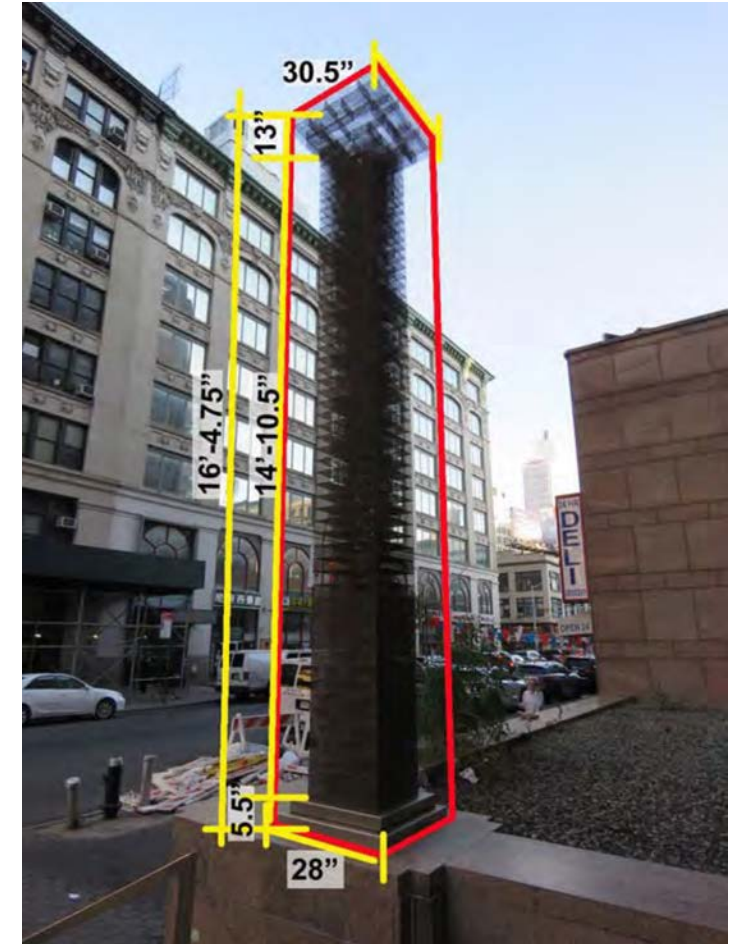




# THE SEVEN COLUMNS OF THE TEMPLE OF WISDOM

## PROPOSED PLAN: SALVAGE

- Photograph and document existing installation
- Carefully remove and store sculptures
- Plan for conservation and reinstallation, at the new BBJ MN Facility or at an alternative site



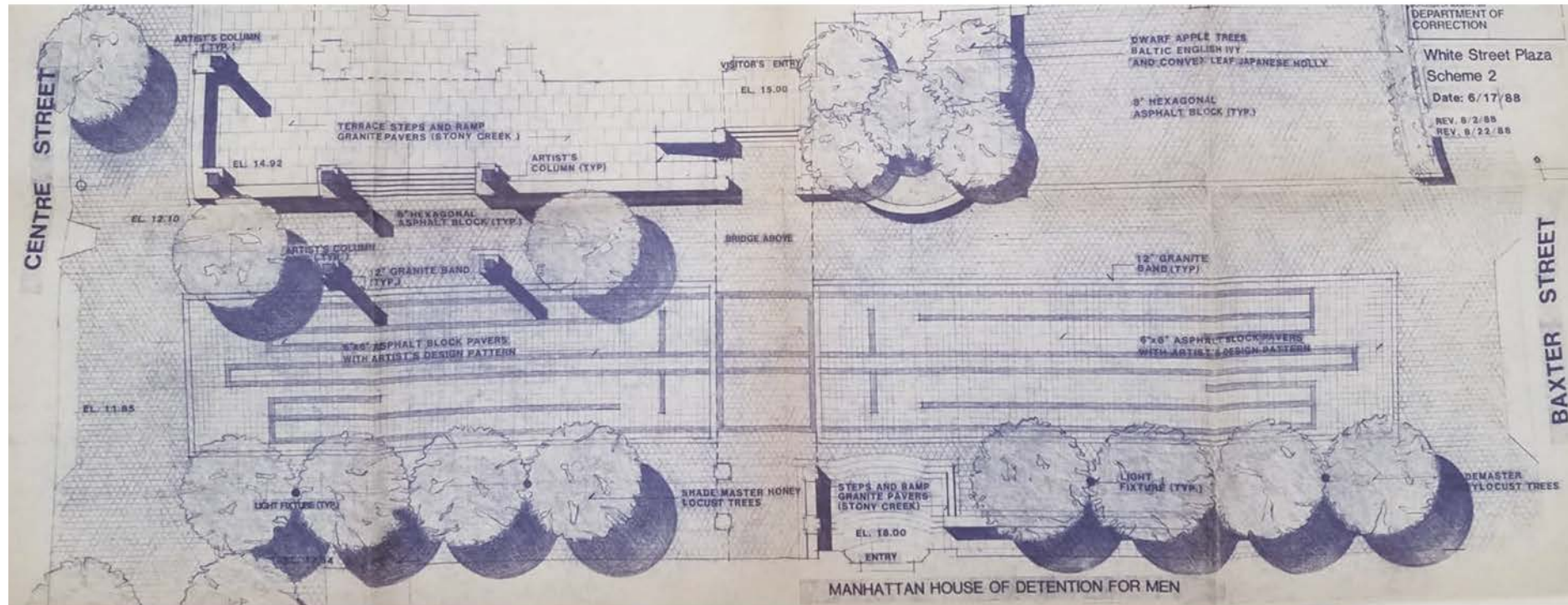
— AREA PROPOSED FOR SALVAGE

# PAVEMENT DESIGN (UPRIGHT)

■ **Pavement Design (Upright)**  
Paving pattern on White St.



# PAVEMENT DESIGN (UPRIGHT)

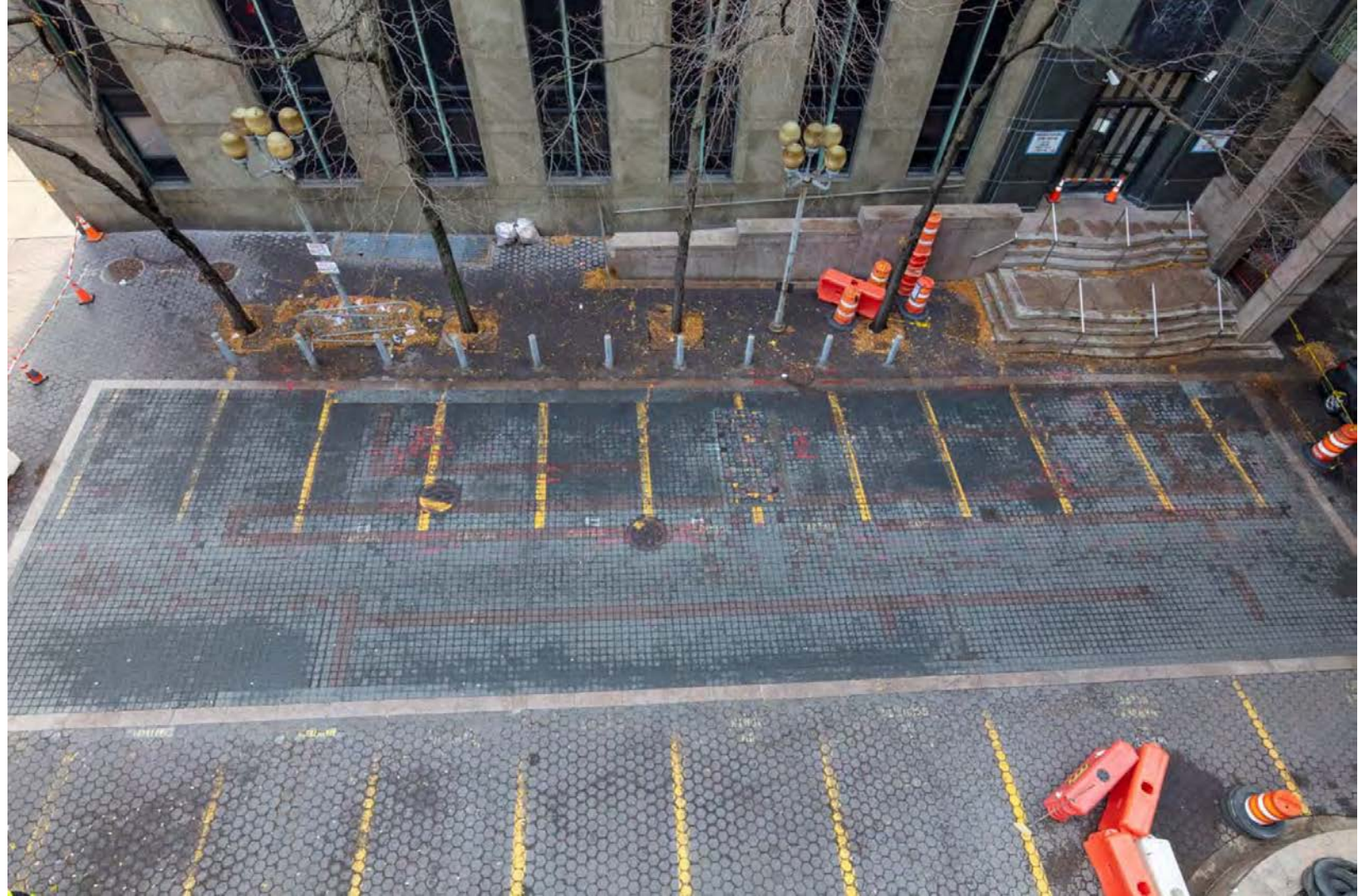
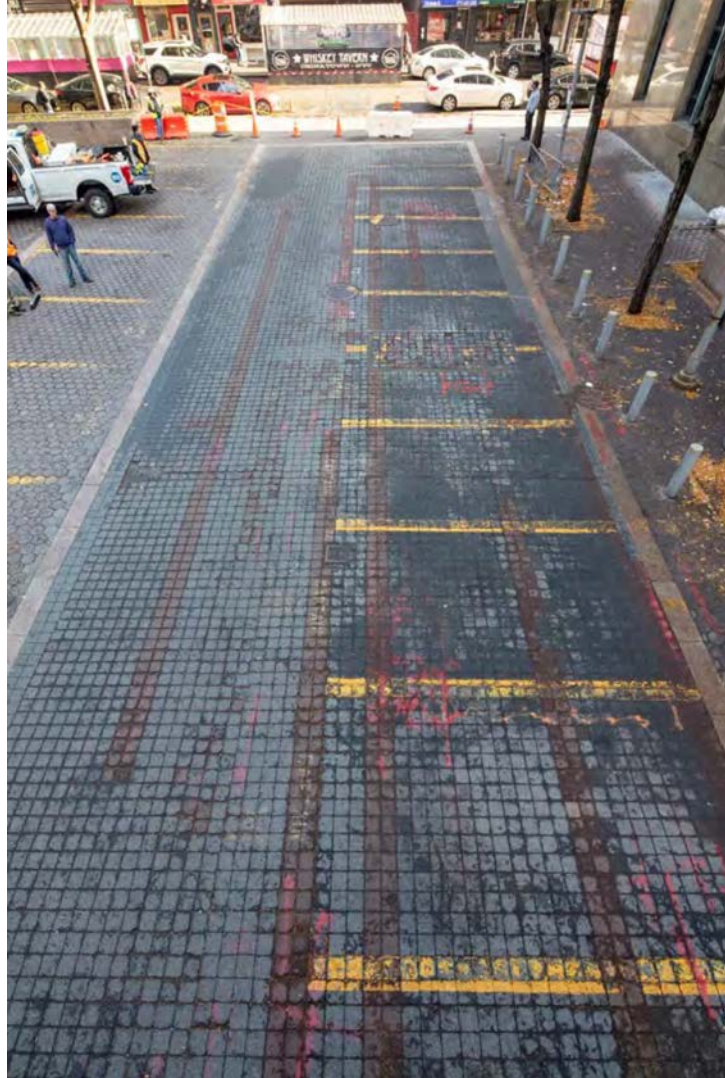


"On the pedestrian walk under the throne...I will create a geometric labyrinth in colored pavers. Disguised within the pattern will be pictograms of two Chinese characters meaning *upright* and *righteousness*."

中正

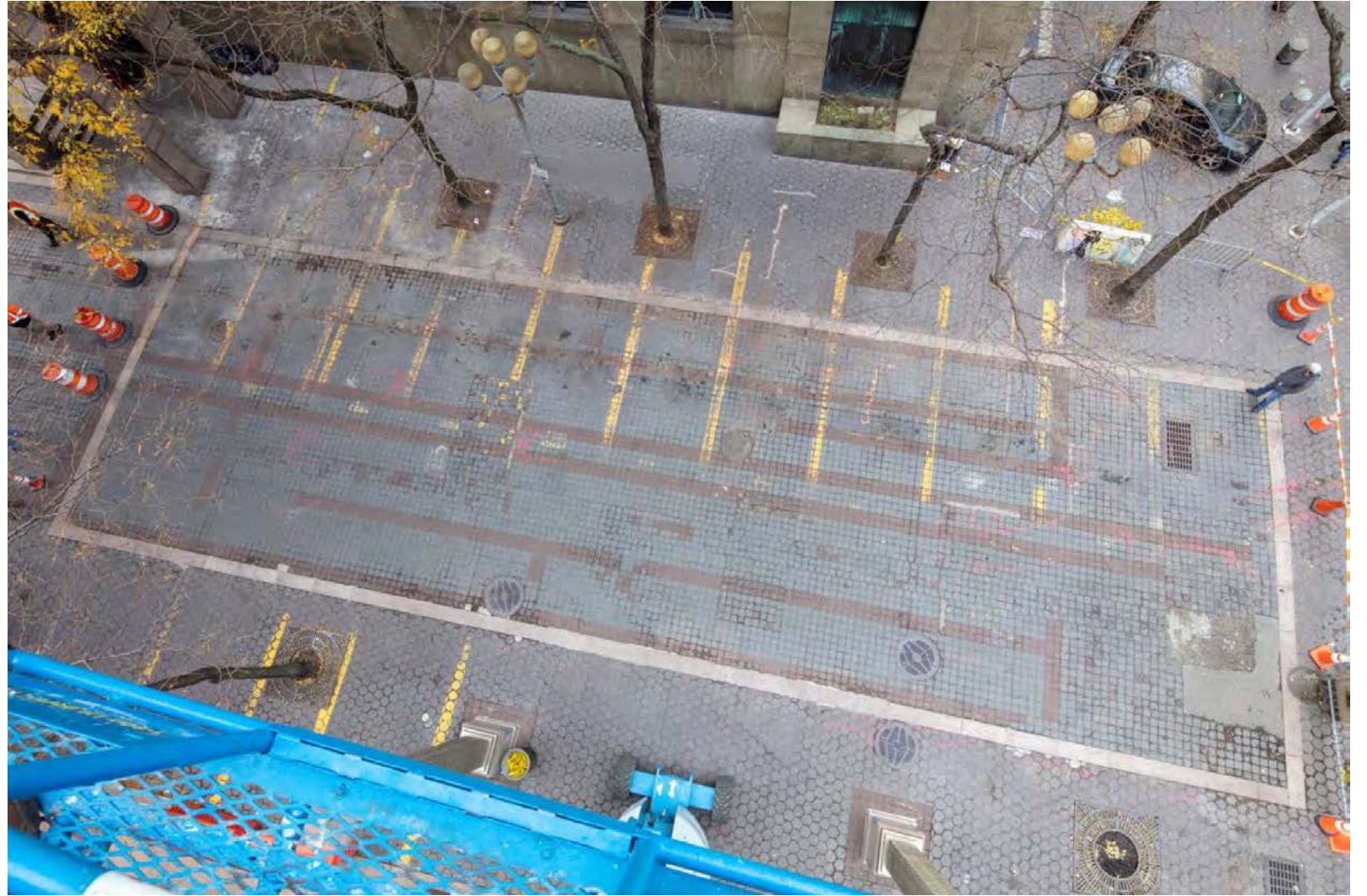


# PAVEMENT DESIGN (UPRIGHT)





# PAVEMENT DESIGN (UPRIGHT)





# PAVEMENT DESIGN (UPRIGHT)

## CONSERVATOR FINDINGS

- Existing pavers are standard construction materials
- Artwork is in poor condition overall





# PAVEMENT DESIGN (UPRIGHT)

## PROPOSED PLAN: SALVAGE MATERIAL SAMPLES

- Photograph and document existing installation
- Save representative samples of each material for reference
- Plan to recreate in new materials in consultation with artist, at the new BBJ MN Facility or at an alternative site



12" PINK  
GRANITE BAND

6" BLACK  
BLOCK PAVERS

6" RED  
BLOCK PAVERS



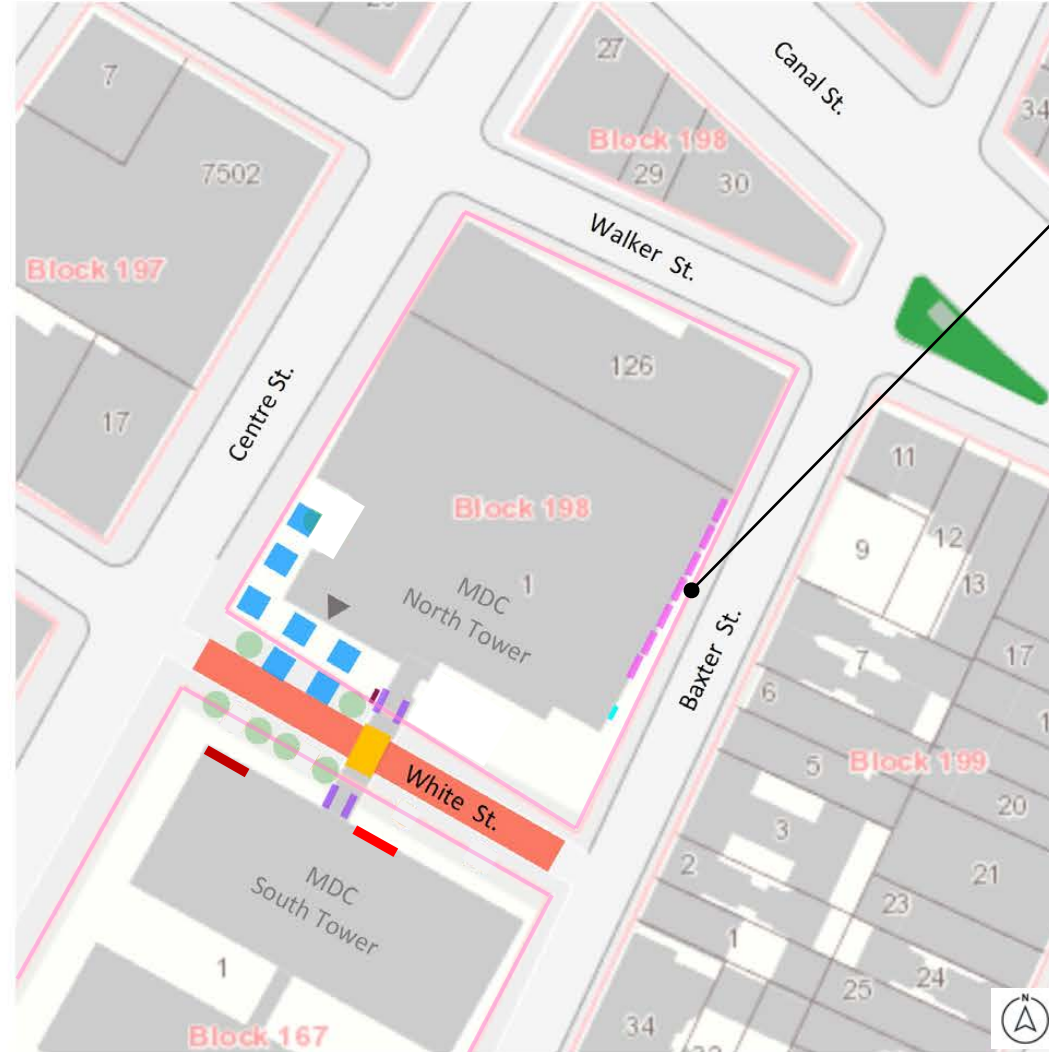
# RICHARD HAAS ARTWORKS



THE JUDGEMENTS OF SOLOMON  
AND PAO KUNG

IMMIGRATION ON THE LOWER EAST  
SIDE OF NEW YORK

# IMMIGRATION ON THE LOWER EAST SIDE OF NEW YORK



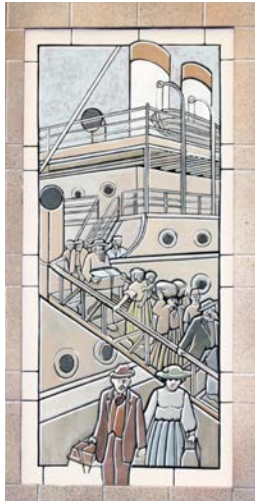
**Immigration on the Lower East Side of New York (1989-1997)**

Seven painted mural panels on second story of building exterior

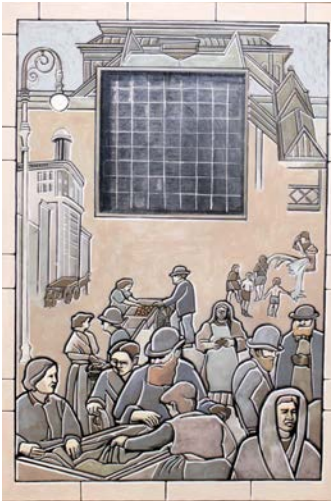


# IMMIGRATION ON THE LOWER EAST SIDE OF NEW YORK

1890s



1900s



1910s



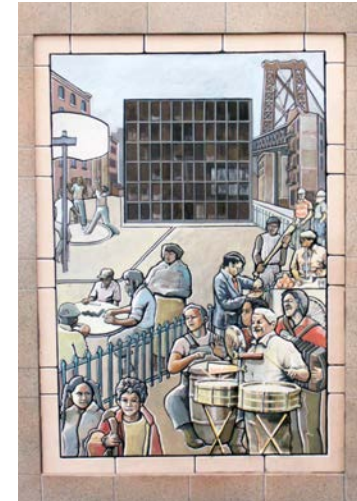
1930s



1940s



1970s



1980s



“Haas’ mural traces the history of successive waves of immigration in the 19<sup>th</sup> and 20<sup>th</sup> century to the Lower East Side and Chinatown, communities surrounding the Detention Center....The mural is a timeline of the immigration of various groups to New York City, focusing on everyday struggles rather than heroism...There are painful memories throughout the mural.”

-DCLA Fact Sheet for Richard Haas’ Murals at the White Street Detention Center, 1992

“With these murals I intended to illustrate overlapping cultures, at a site adjacent to the 'melting pot' immigrant communities of the Lower East Side. Many immigrant cultures were represented, many with common ties, among them, Jewish, Hispanic, Chinese, and Italian. The photographs of Jacob Riis and Lewis Hine at the turn of the century depicting the Ghetto communities, child labor, famous places like the Five Corners and Bandit's Roost at Mulberry Bend, were influential in some of my compositions.”

– Richard Haas, 1991



# IMMIGRATION ON THE LOWER EAST SIDE OF NEW YORK

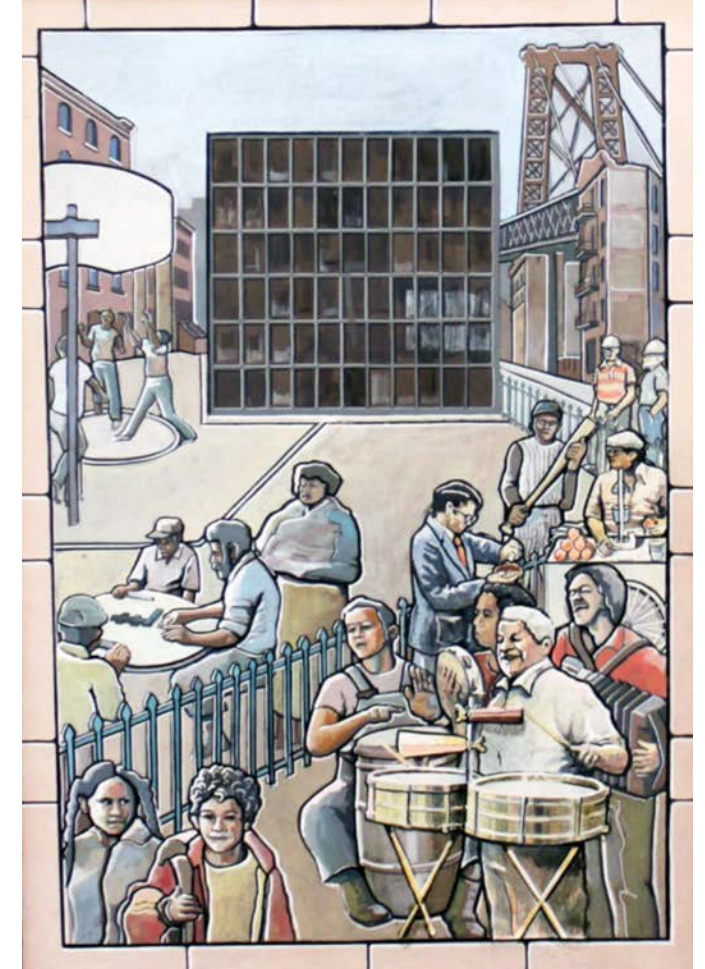


The mural was completed in 1989, but in 1992 panel 6 was painted over in response to objections raised by the Hispanic Correction Officers' Association to the content depicted.

Haas subsequently developed an alternative design for the panel in consultation with local community members, which was completed in 1997.



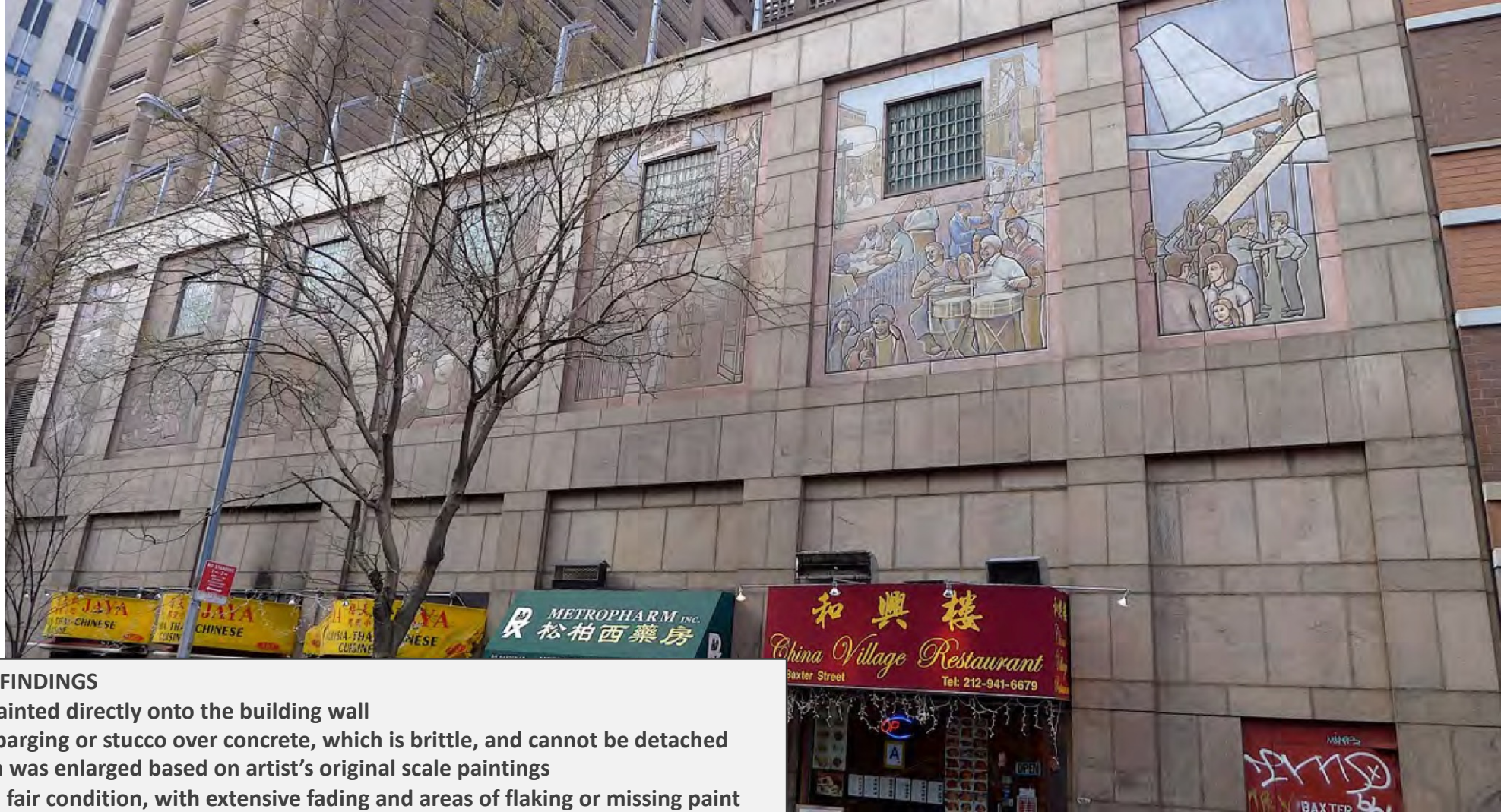
PANEL 6 ORIGINAL DESIGN 1992



PANEL 6 REVISED DESIGN 1997



# IMMIGRATION ON THE LOWER EAST SIDE OF NEW YORK



## CONSERVATOR FINDINGS

- Mural was painted directly onto the building wall
- Substrate is parging or stucco over concrete, which is brittle, and cannot be detached
- Mural design was enlarged based on artist's original scale paintings
- Artwork is in fair condition, with extensive fading and areas of flaking or missing paint



# IMMIGRATION ON THE LOWER EAST SIDE OF NEW YORK

## PROPOSED PLAN: DEACESSION

- Photograph and document existing installation
- Deaccession (remove artwork from the City's collection)





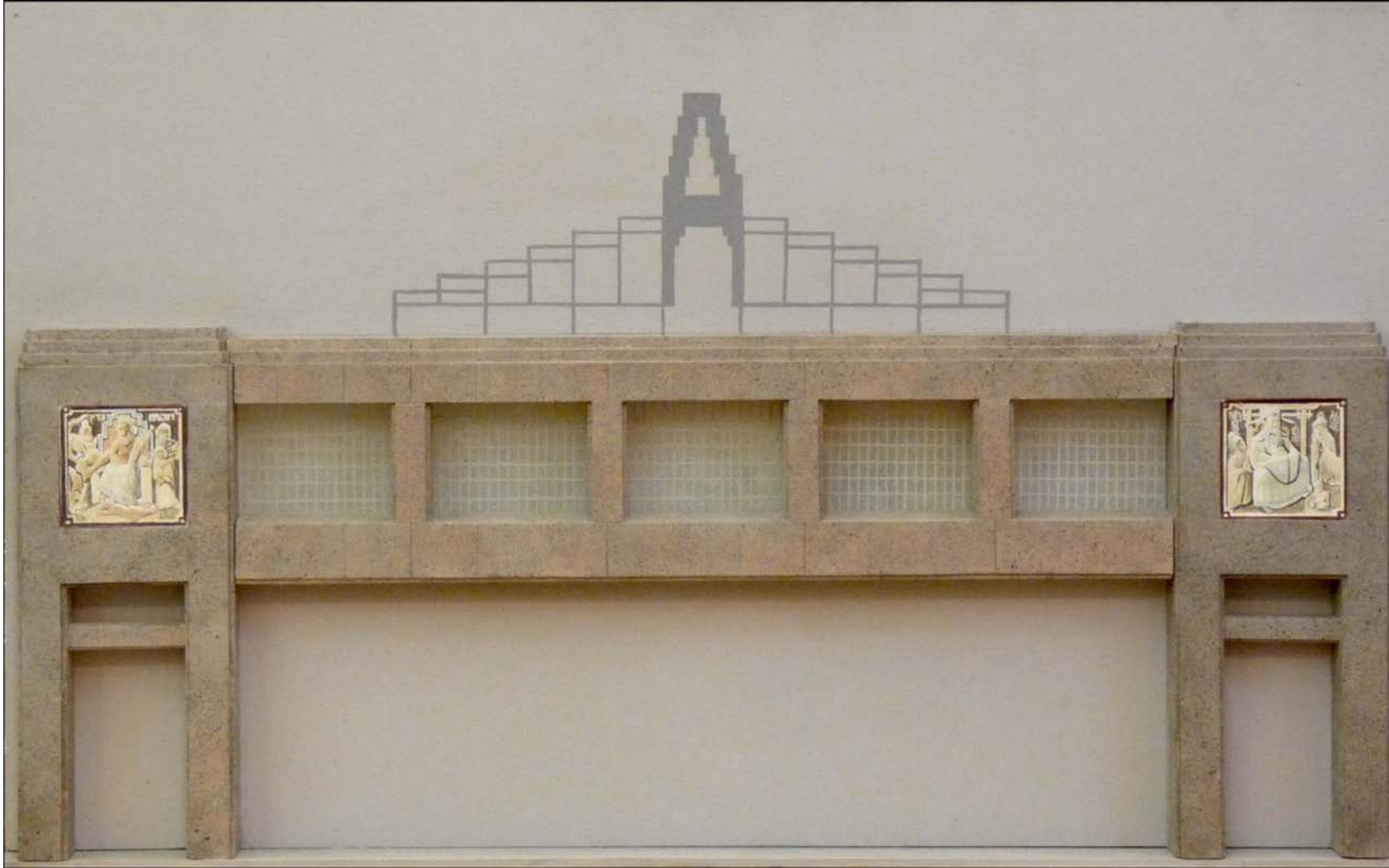
# THE JUDGEMENTS OF SOLOMON AND PAO KUNG



***The Judgements of Solomon and Pao Kung* (1989)**

Four cast cement relief medallions at exterior corners of pedestrian bridge

# THE JUDGEMENTS OF SOLOMON AND PAO KUNG





# THE JUDGEMENTS OF SOLOMON AND PAO KUNG



SOLOMON



PAO KUNG



# THE JUDGEMENTS OF SOLOMON AND PAO KUNG



MEDALLION #1 (SOLOMON)



MEDALLION #2 (PAO KUNG)



# THE JUDGEMENTS OF SOLOMON AND PAO KUNG



MEDALLION #3 (SOLOMON)

## CONSERVATOR FINDINGS

- Cast concrete relief panels can be removed from site
- Artworks are in fair condition overall, with cleaning and restoration recommended



MEDALLION #4 (PAO KUNG)



# THE JUDGEMENTS OF SOLOMON AND PAO KUNG

## PROPOSED PLAN: SALVAGE

- Photograph and document existing installation
- Carefully remove and store bronze panels
- Plan for conservation and re-installation, at the new BBJ MN Facility or at an alternative site



— AREA PROPOSED FOR SALVAGE



# ARTWORK REMOVAL PLAN OVERVIEW

## RENE CHAMBELLAN



ENLIGHTENMENT



ARMS OF THE CITY OF NEW YORK

## KIT-YIN SNYDER



SOLOMON'S THRONE



THE SEVEN COLUMNS OF THE TEMPLE OF WISDOM



PAVEMENT DESIGN (UPRIGHT)




## RICHARD HAAS



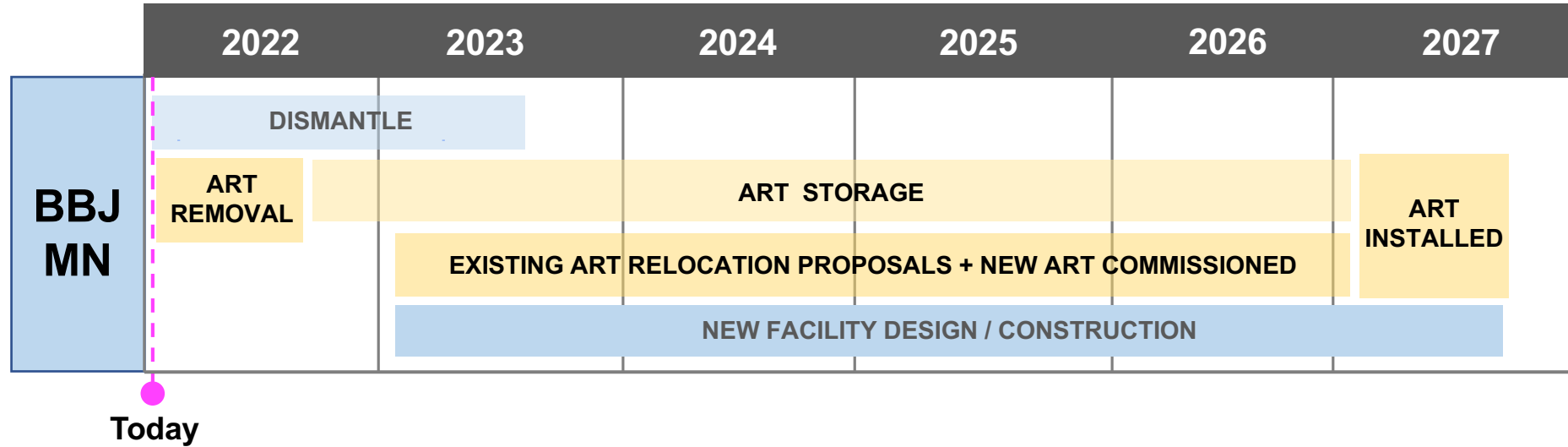
IMMIGRATION ON THE LOWER EAST SIDE OF NEW YORK



THE JUDGEMENTS OF SOLOMON AND PAO KUNG

-  ARTWORKS TO BE SALVAGED
-  MATERIAL SAMPLES TO BE SALVAGED
-  ARTWORK TO BE DEACCESSIONED

# ANTICIPATED ARTWORK SCHEDULE OVERVIEW



## PDC Review (December 2021 – February 2022)

PDC Preliminary Review of artwork removal and storage proposal.

## Artwork Removal (February – April 2022)

The selected Design-Builder's conservator will be responsible for managing the careful removal, crating, and labeling of the pieces approved for salvage and overseeing their transport to storage.  
PDC Final Review of completed artwork removal and storage work.

## Artwork Storage (2022-2027)

The artworks will be stored in custom crates on City property on Rikers Island.

## BBJ Manhattan Facility Design-Build Project (2023-2027)

Look for opportunities for reinstalling some or all artworks on site or at alternative locations. New artworks commissioned for Facility through Percent for Art Program.

## Artwork Installation (2027)

Existing artworks approved by PDC for reinstallation will be cleaned and restored by professional conservators before being installed at the new Manhattan Facility or at an alternative location. New artworks approved by PDC also installed.



---

**THANK YOU**