



NYC Department of Correction at a Glance

Information through first 6 months of FY 2018



Average Daily Population 9,133

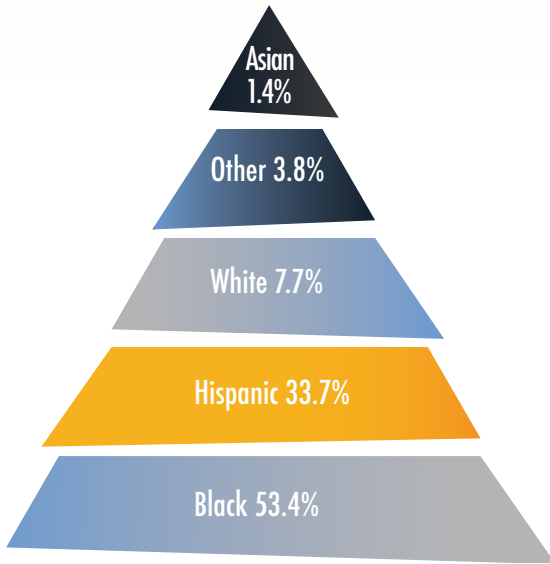
Average Number of Inmates Transported to Court Daily 761

Average Daily Visitors to Rikers Island 1,002

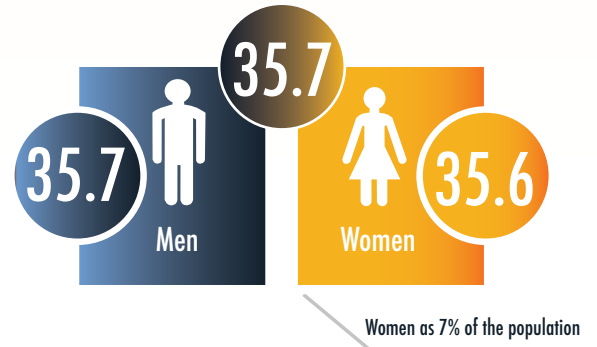
Total admissions 26,343

Total discharges 26,830

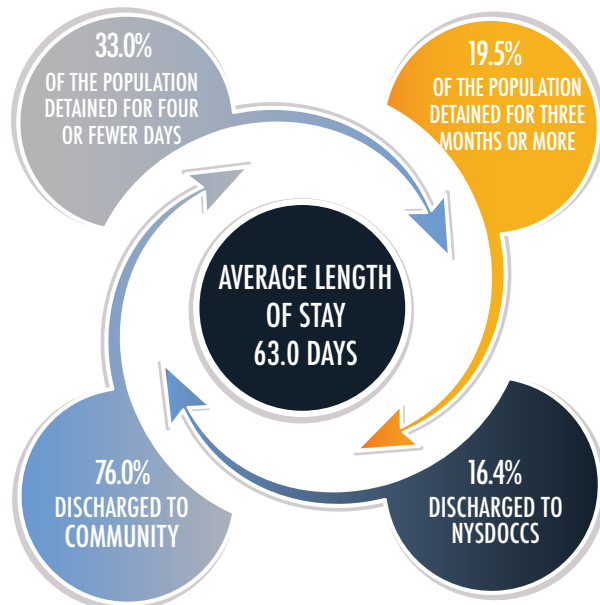
RACIAL/ETHNIC BREAKDOWN



AVERAGE AGE OF AN INMATE ADMITTED TO DOC



AVERAGE LENGTH OF STAY

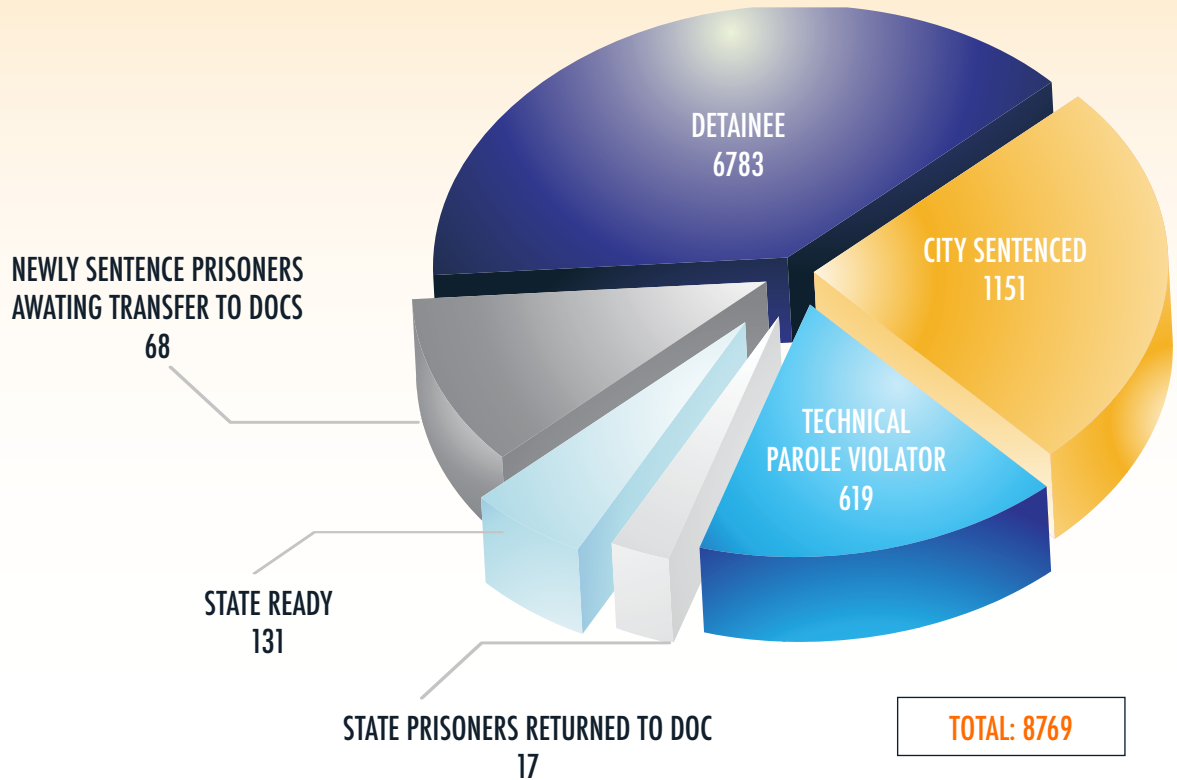




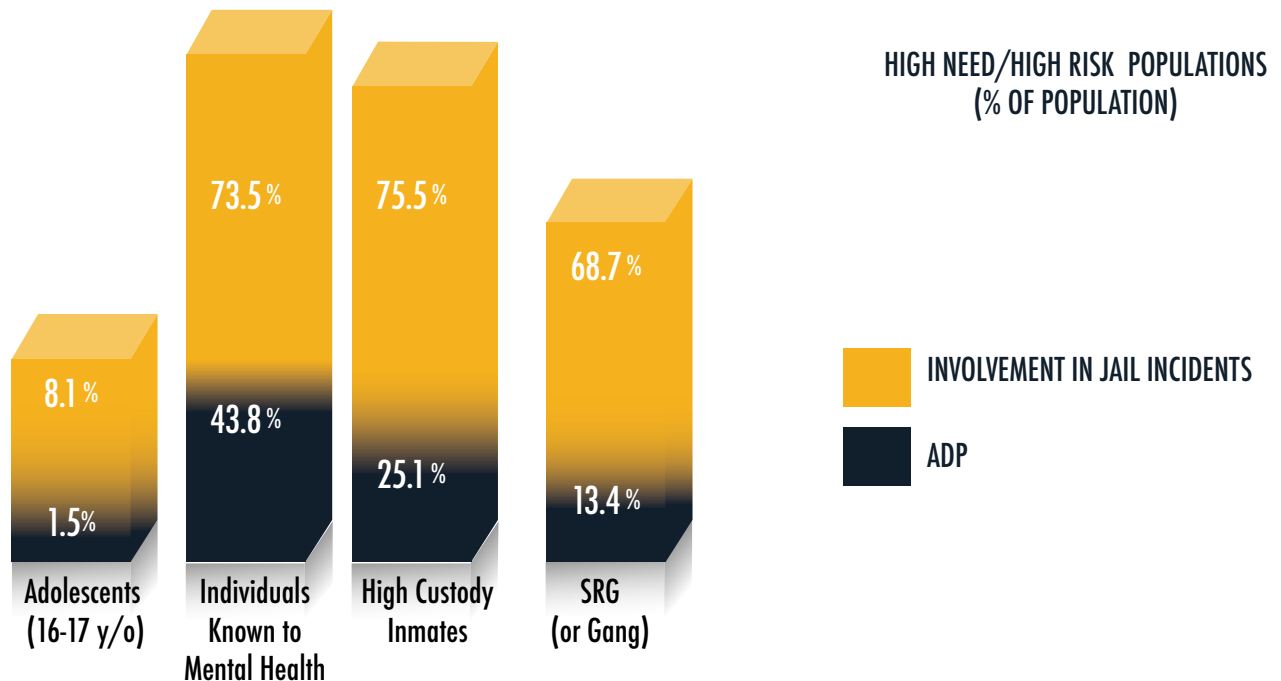
NYC Department of Correction at a Glance

Information through first 6 months of FY 2018

NEWLY SENTENCED PRISONERS AWAITING TRANSFER TO NYSDOCCS



SPECIAL INMATE POPULATION





NYC Department of Correction at a Glance

Information through first 6 months of FY 2018

ADP BY TOP ARREST CHARGE BASED ON 1ST 3 MONTHS FY18 CROSS-SECTIONS

CHARGE CATEGORY	ADP
ROBBERY	1,069
MURDER/ATT MURDER/MANSLTER	989
OTHER FELONIES	838
WARR/HOLDS	892
ASSAULT	778
DRUG FEL SALE	645
DRUG FEL POSSESS	680
BURGLARY	707
WEAPONS	576
OTHER MISD	457
GRAND LARCENY	336
MISD LARCENY	223
MISD ASSAULT	222
OTHER SEXUAL OFFENSES	200
DRUG MISD	156
RAPE/ATT RAPE	107
VEHICULAR	136
MISD WEAPONS	87
OTHER	31
MISSING	43
VIOLATIONS	8
LOITER/PROSTITU	7