



NYC Department of Correction at a Glance

Information through first nine months of FY 2017



Average Daily Population 9,589

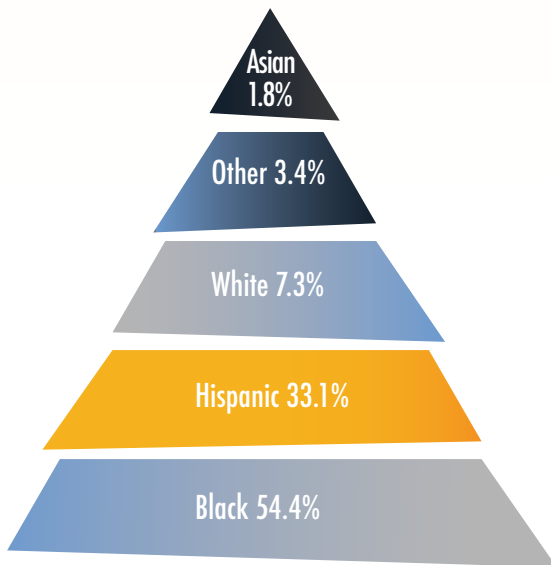
Average Number of Inmates Transported to Court Daily 802

Average Daily Visitors to Rikers Island 1,030

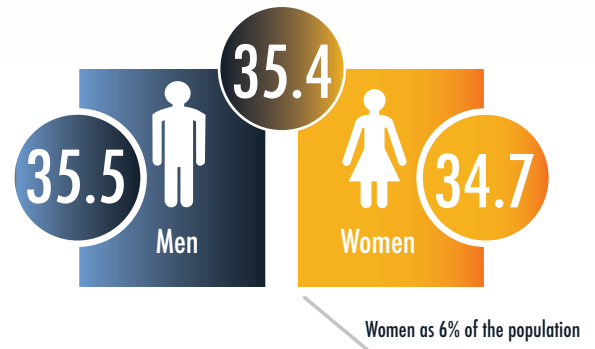
Total admissions 43,281

Total discharges 43,881

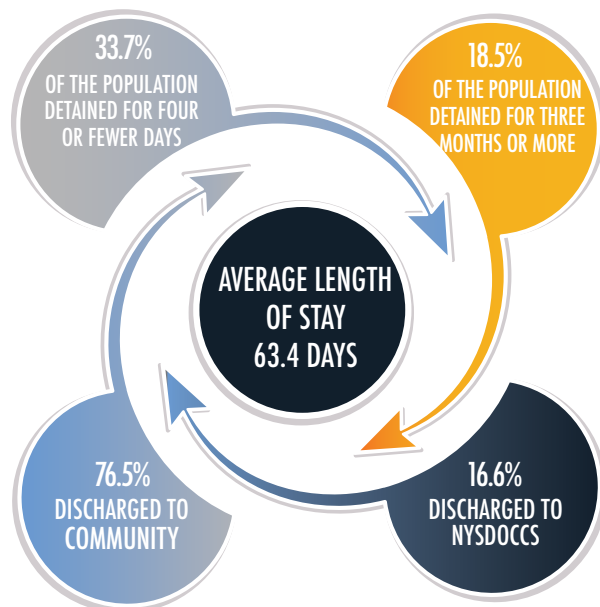
RACIAL/ETHNIC BREAKDOWN



AVERAGE AGE OF AN INMATE ADMITTED TO DOC



AVERAGE LENGTH OF STAY

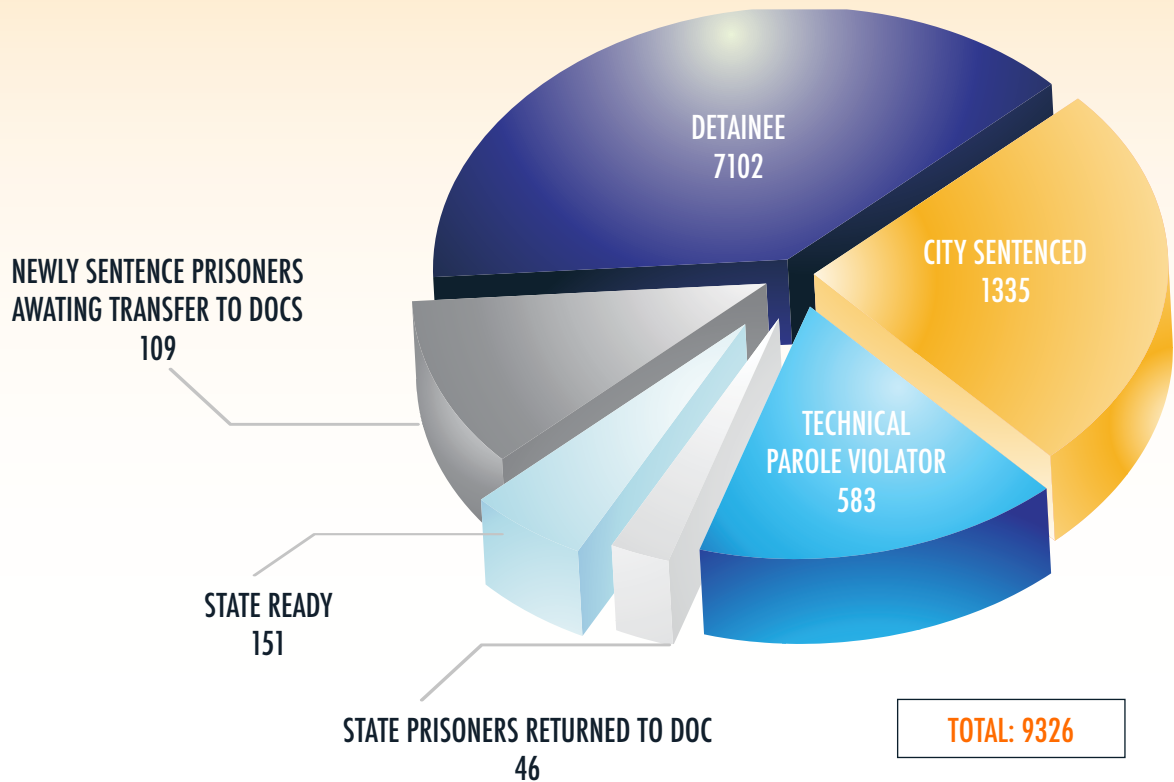




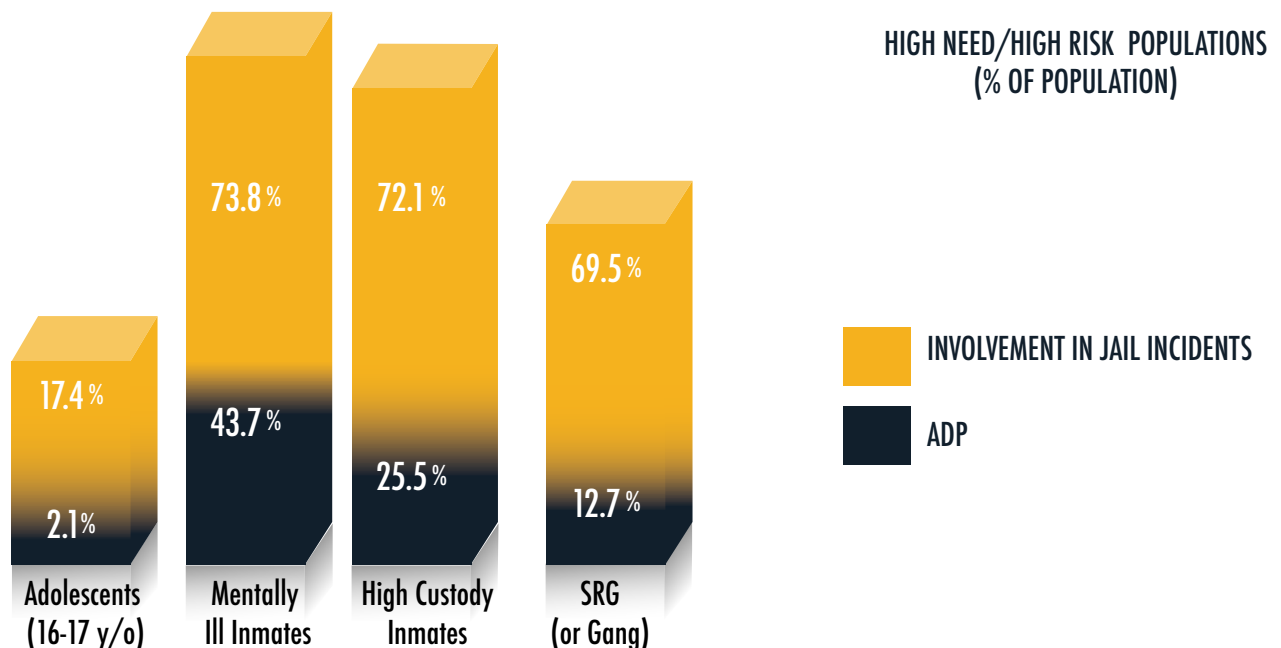
NYC Department of Correction at a Glance

Information through first nine months of FY 2017

NEWLY SENTENCED PRISONERS AWAITING TRANSFER TO NYSDOCCS



SPECIAL INMATE POPULATION





NYC Department of Correction at a Glance

Information through first nine months of FY 2017

ADP BY TOP ARREST CHARGE BASED ON 1ST 9 MONTHS FY17 CROSS-SECTIONS

CHARGE CATEGORY	ADP
ROBBERY	1,194
MURDER/ATT MURDER/MANSLTER	1,040
OTHER FELONIES	880
WARR/HOLDS	861
ASSAULT	768
DRUG FEL SALE	754
DRUG FEL POSSESS	749
BURGLARY	706
WEAPONS	570
OTHER MISD	466
GRAND LARCENY	363
MISD LARCENY	231
MISD ASSAULT	226
OTHER SEXUAL OFFENSES	215
DRUG MISD	182
RAPE/ATT RAPE	141
VEHICULAR	140
MISD WEAPONS	73
OTHER	31
MISSING	28
VIOLATIONS	10
LOITER/PROSTITU	9