



NYC Department of Correction at a Glance

Information through all 12 months of FY 2017



Average Daily Population 9,500

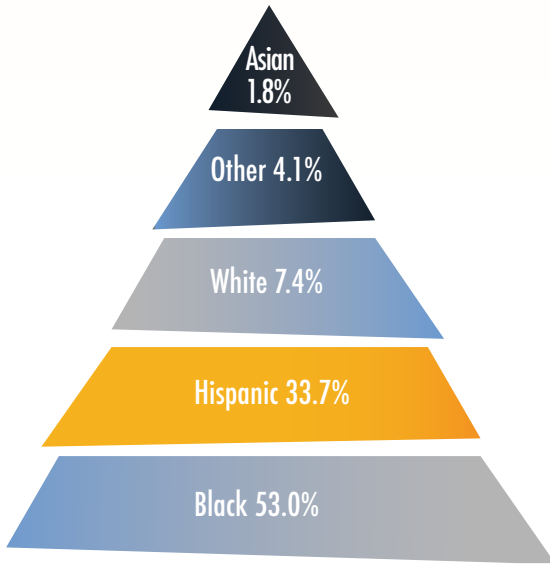
Average Number of Inmates Transported to Court Daily 759

Average Daily Visitors to Rikers Island 1,019

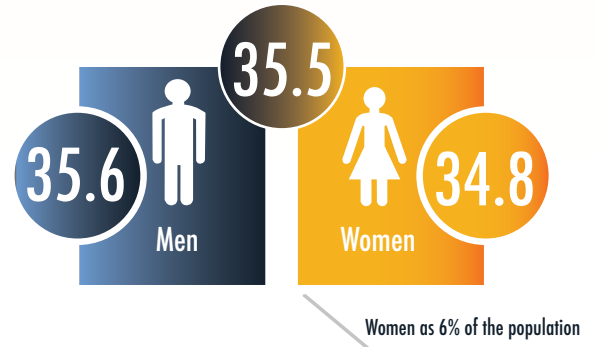
Total admissions 58,226

Total discharges 58,981

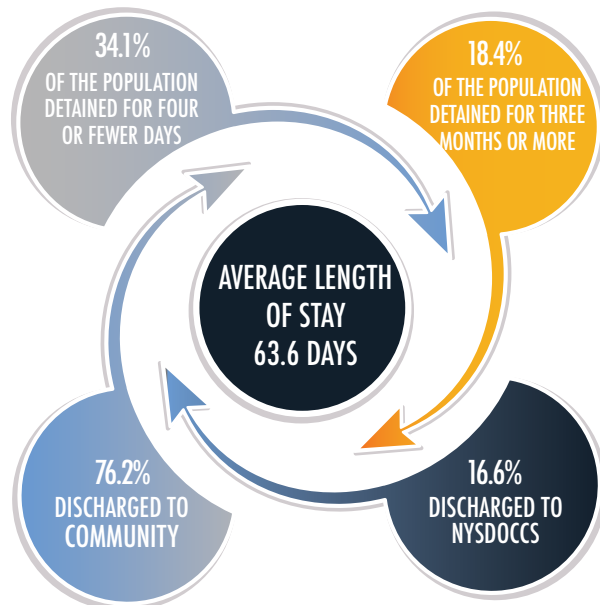
RACIAL/ETHNIC BREAKDOWN



AVERAGE AGE OF AN INMATE ADMITTED TO DOC



AVERAGE LENGTH OF STAY

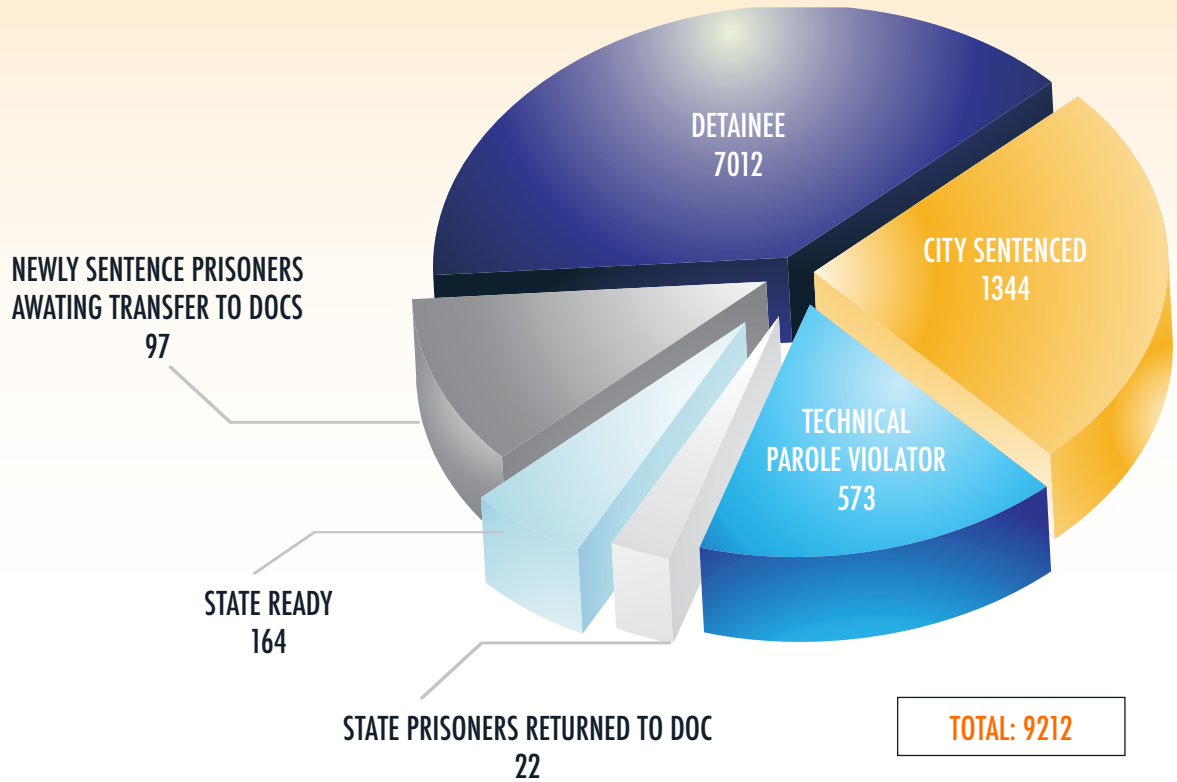




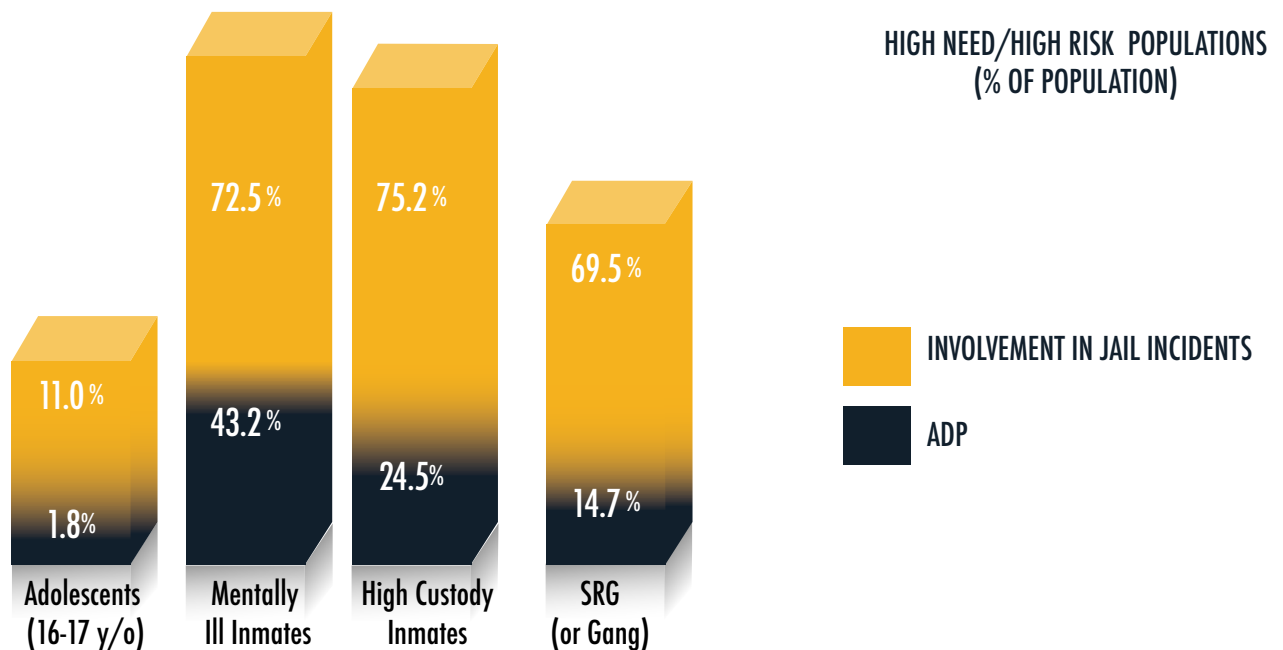
NYC Department of Correction at a Glance

Information through all 12 months of FY 2017

NEWLY SENTENCED PRISONERS AWAITING TRANSFER TO NYSDOCCS



SPECIAL INMATE POPULATION





NYC Department of Correction at a Glance

Information through all 12 months of FY 2017

ADP BY TOP ARREST CHARGE BASED ON 12 MONTHS FY17 CROSS-SECTIONS

CHARGE CATEGORY	ADP
ROBBERY	1,162
MURDER/ATT MURDER/MANSLTER	1,029
OTHER FELONIES	882
WARR/HOLDS	861
ASSAULT	765
DRUG FEL SALE	742
DRUG FEL POSSESS	739
BURGLARY	700
WEAPONS	564
OTHER MISD	469
GRAND LARCENY	355
MISD LARCENY	231
MISD ASSAULT	225
OTHER SEXUAL OFFENSES	212
DRUG MISD	181
RAPE/ATT RAPE	134
VEHICULAR	141
MISD WEAPONS	77
OTHER	31
MISSING	29
VIOLATIONS	10
LOITER/PROSTITU	9