



NYC Department of Correction at a Glance

Information for the first 9 months of FY 2020



Average Daily Population 6,465

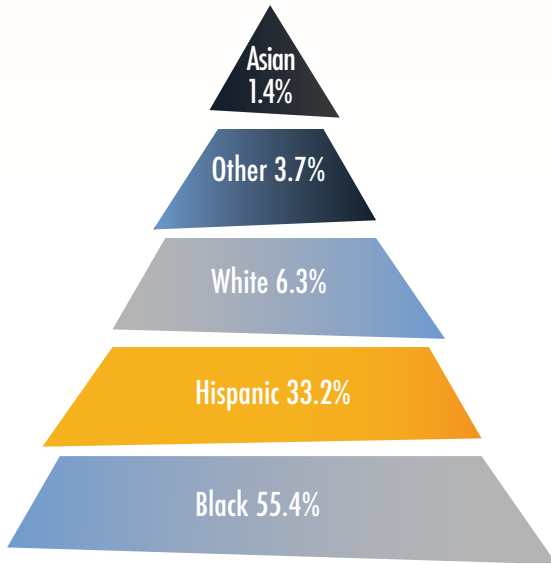
Average Number of Detainees Transported to Court Daily 523

Average Daily Visitors 586

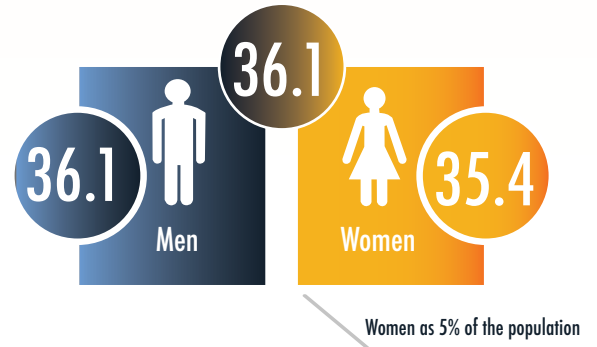
Total admissions 20,732

Total discharges 23,577

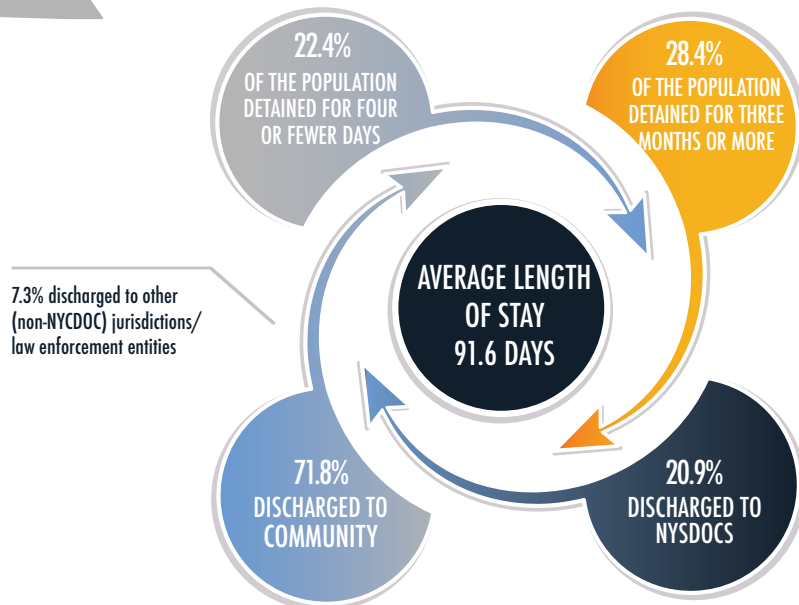
RACIAL/ETHNIC BREAKDOWN



AVERAGE AGE OF A DETAINEE ADMITTED TO DOC



AVERAGE LENGTH OF STAY

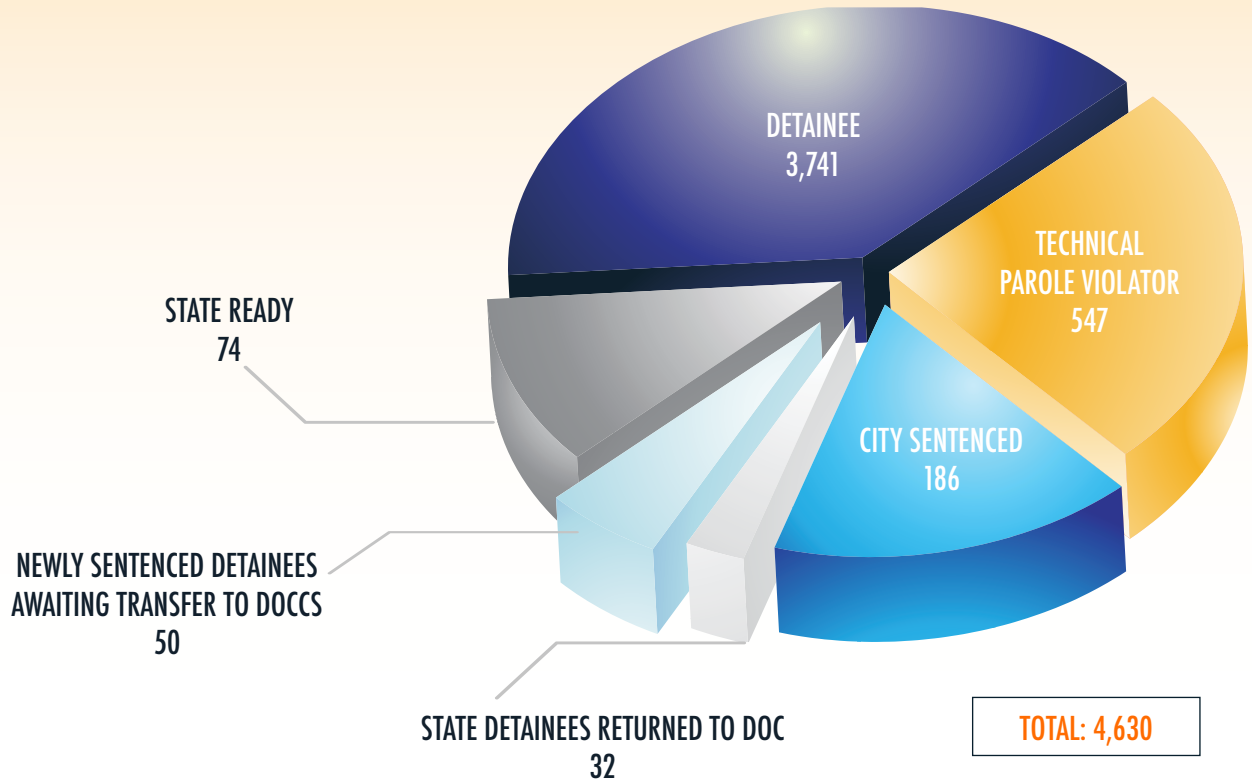




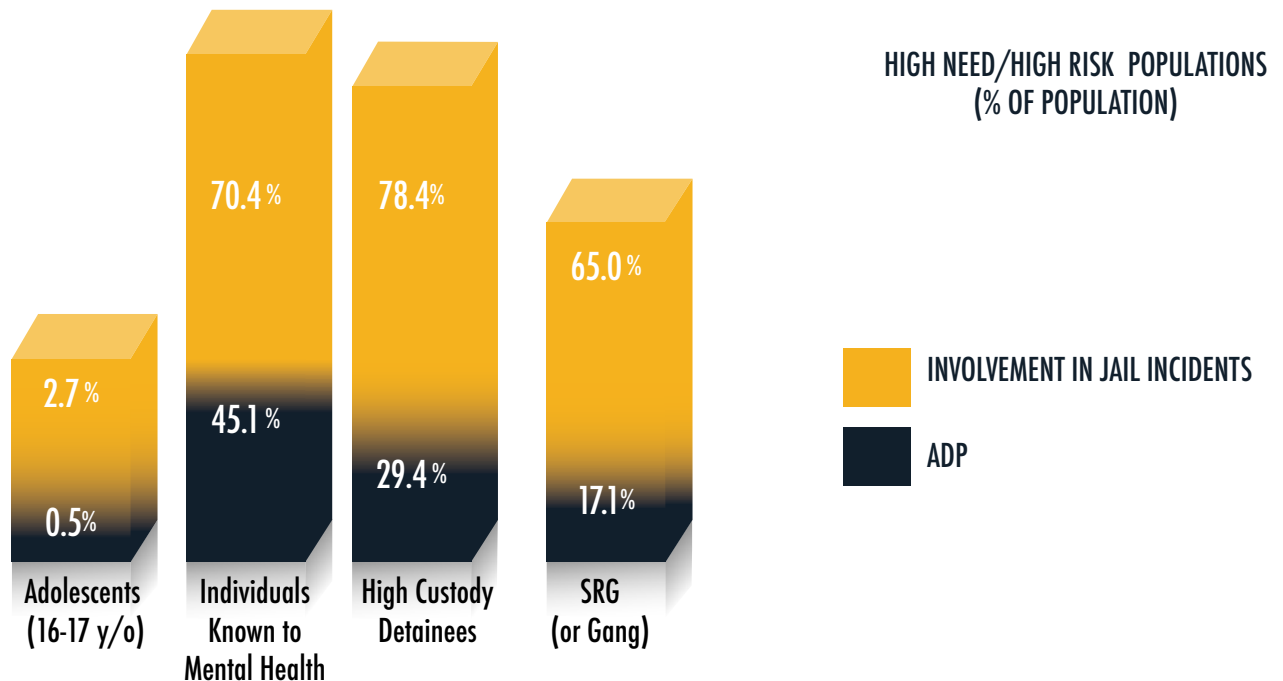
NYC Department of Correction at a Glance

Information for the first 9 months of FY 2020

TOTAL POPULATION BY CATEGORY



SPECIAL DETAINEE POPULATION





NYC Department of Correction at a Glance

Information for the first 9 months of FY 2020

ADP BY TOP ARREST CHARGE BASED ON THE FIRST 9 MONTHS FY20 CROSS-SECTIONS

CHARGE CATEGORY	ADP
MURDER/ATT MURDER/MANSLTER	941
WARR/HOLDS	870
ROBBERY	739
ASSAULT	565
BURGLARY	555
OTHER FELONIES	501
WEAPONS	411
DRUG FEL SALE	311
DRUG FEL POSSESS	310
OTHER MISD	261
OTHER SEXUAL OFFENSES	207
GRAND LARCENY	200
MISD LARCENY	139
MISD ASSAULT	138
RAPE/ATT RAPE	102
DRUG MISD	78
VEHICULAR	57
MISD WEAPONS	46
OTHER	41
MISSING	25
VIOLATIONS	5
LOITER/PROSTITU	4