



NYC Department of Correction at a Glance

Information through first six months of FY 2017



Average Daily Population 9,684

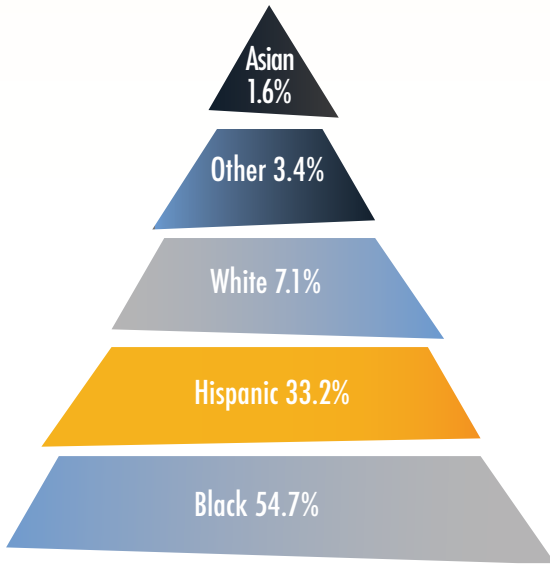
Average Number of Inmates Transported to Court Daily 793

Average Daily Visitors to Rikers Island 1,060

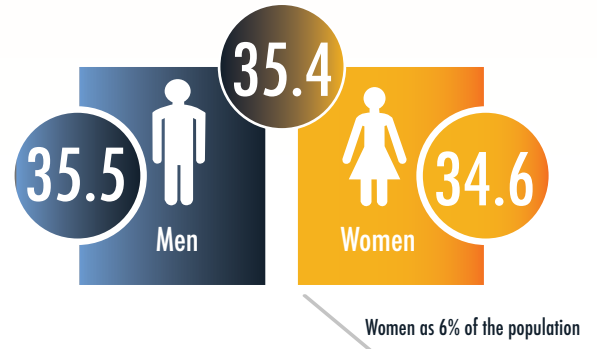
Total admissions 28,667

Total discharges 29,392

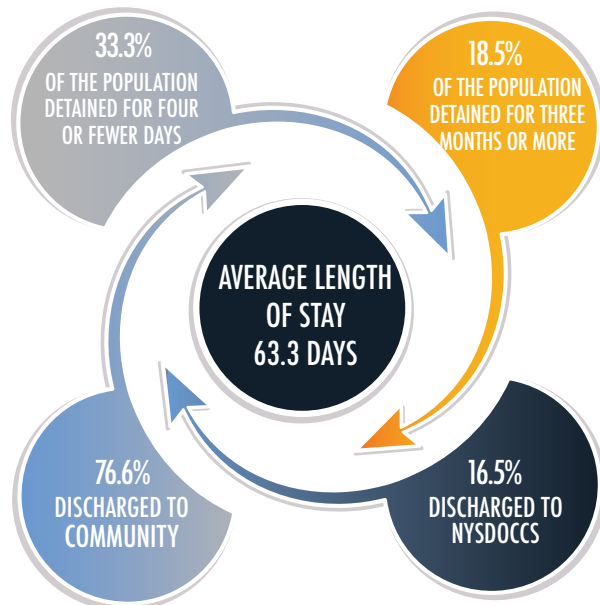
RACIAL/ETHNIC BREAKDOWN



AVERAGE AGE OF AN INMATE ADMITTED TO DOC



AVERAGE LENGTH OF STAY

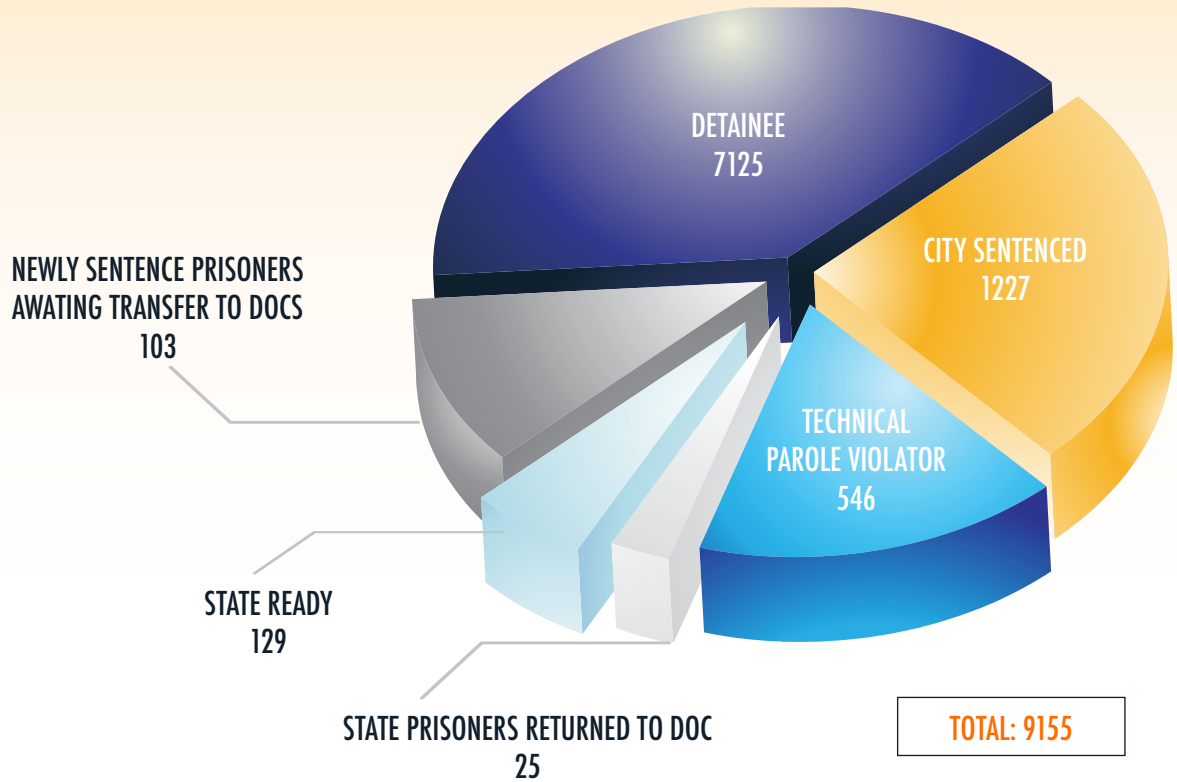




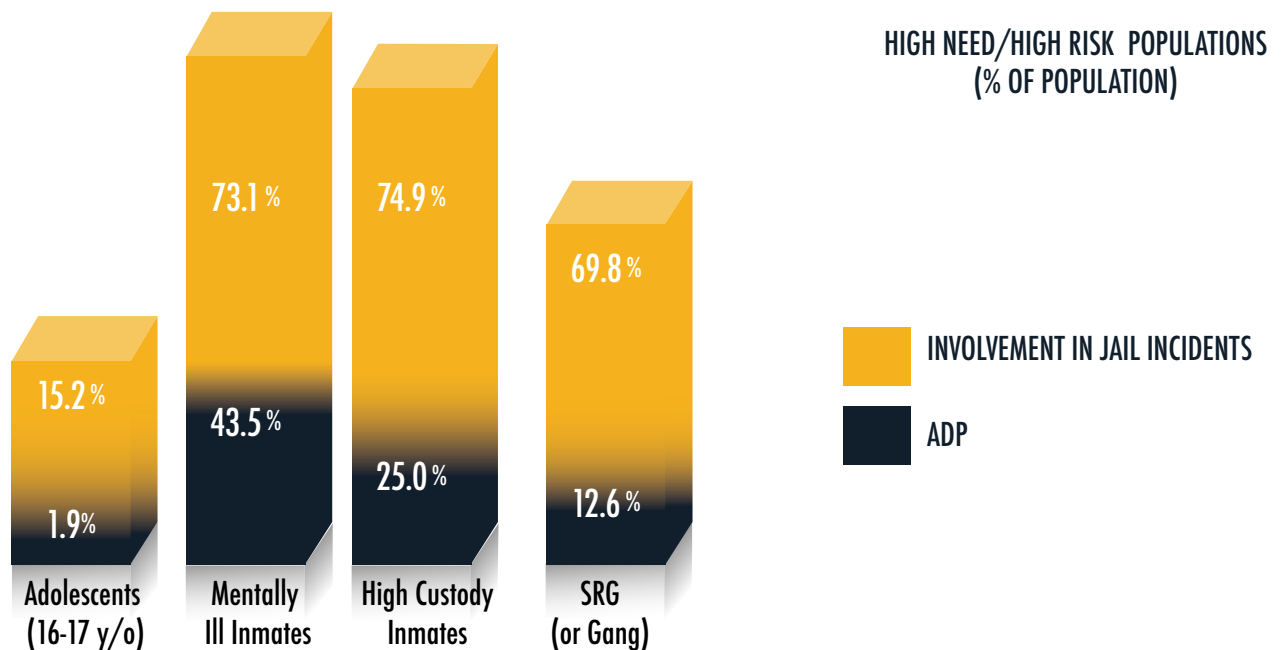
NYC Department of Correction at a Glance

Information through first six months of FY 2017

NEWLY SENTENCED PRISONERS AWAITING TRANSFER TO NYSDOCCS



SPECIAL INMATE POPULATION





NYC Department of Correction at a Glance

Information through first six months of FY 2017

ADP BY TOP ARREST CHARGE BASED ON 1ST 6 MONTHS FY17 CROSS-SECTIONS

CHARGE CATEGORY	ADP
ROBBERY	1,273
MURDER/ATT MURDER/MANSLTER	1,080
WARR/HOLDS	902
OTHER FELONIES	916
ASSAULT	802
DRUG FEL SALE	790
DRUG FEL POSSESS	776
BURGLARY	741
WEAPONS	590
OTHER MISD	486
GRAND LARCENY	387
MISD LARCENY	242
MISD ASSAULT	234
OTHER SEXUAL OFFENSES	227
DRUG MISD	192
RAPE/ATT RAPE	153
VEHICULAR	144
MISD WEAPONS	74
OTHER	34
MISSING	27
VIOLATIONS	10
LOITER/PROSTITU	10