



NYC Department of Correction at a Glance

Information for the 12 months of FY 2019



Average Daily Population 7,939

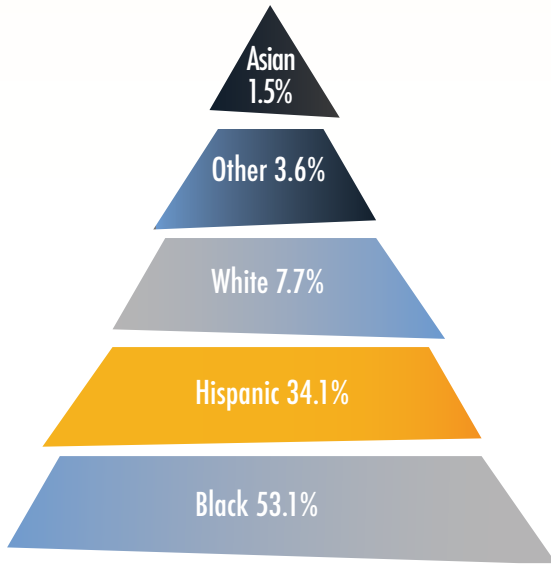
Average Number of Inmates Transported to Court Daily 688

Average Daily Visitors 772

Total admissions 39,420

Total discharges 40,253

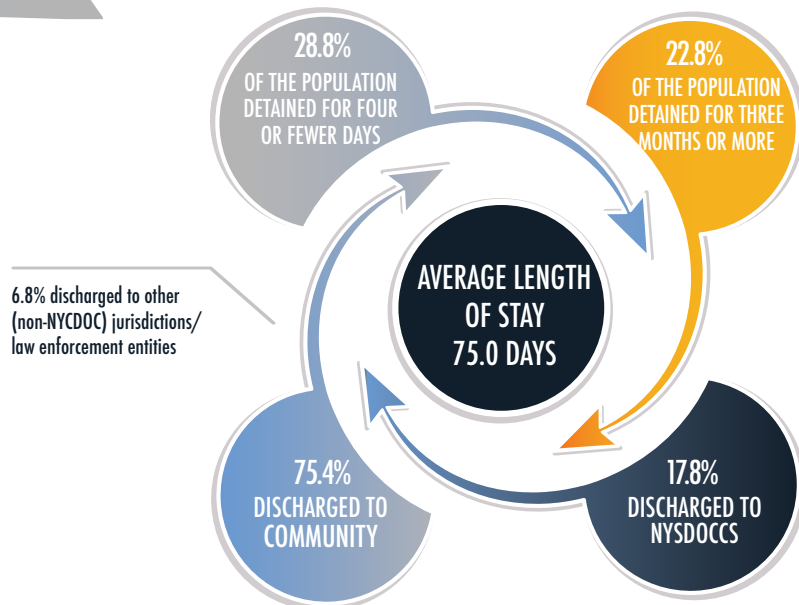
RACIAL/ETHNIC BREAKDOWN



AVERAGE AGE OF AN INMATE ADMITTED TO DOC



AVERAGE LENGTH OF STAY

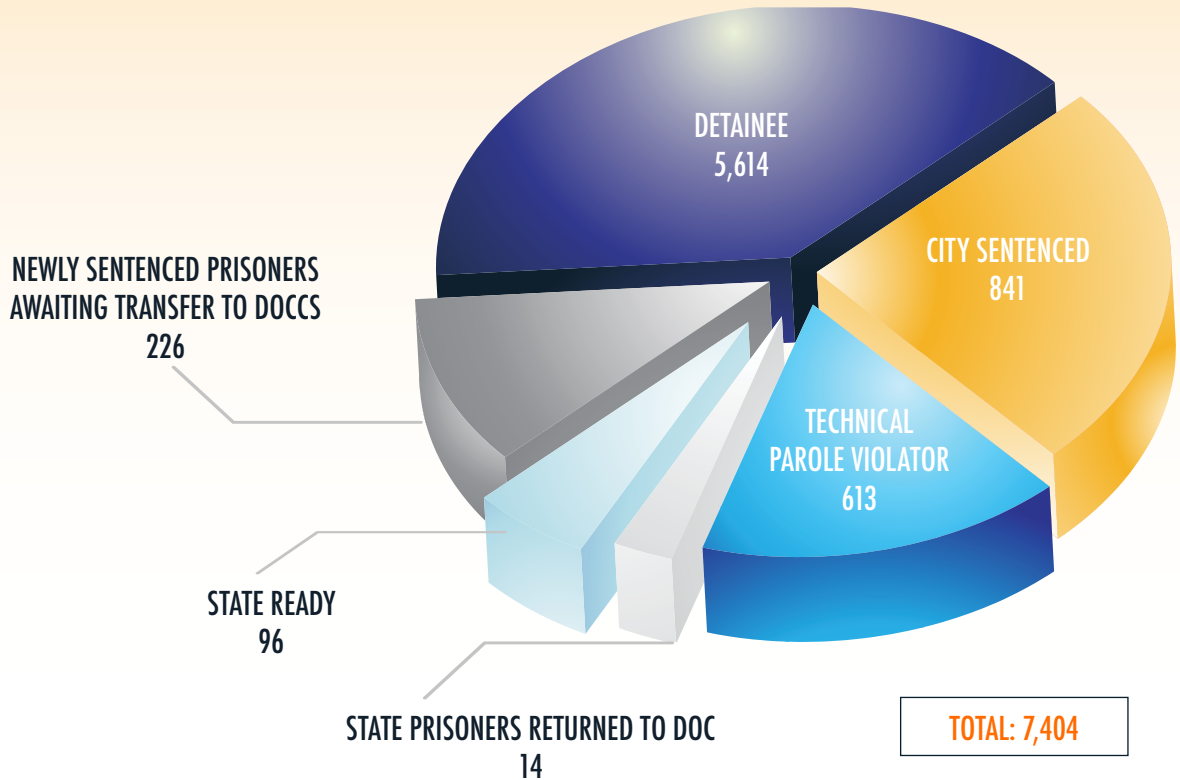




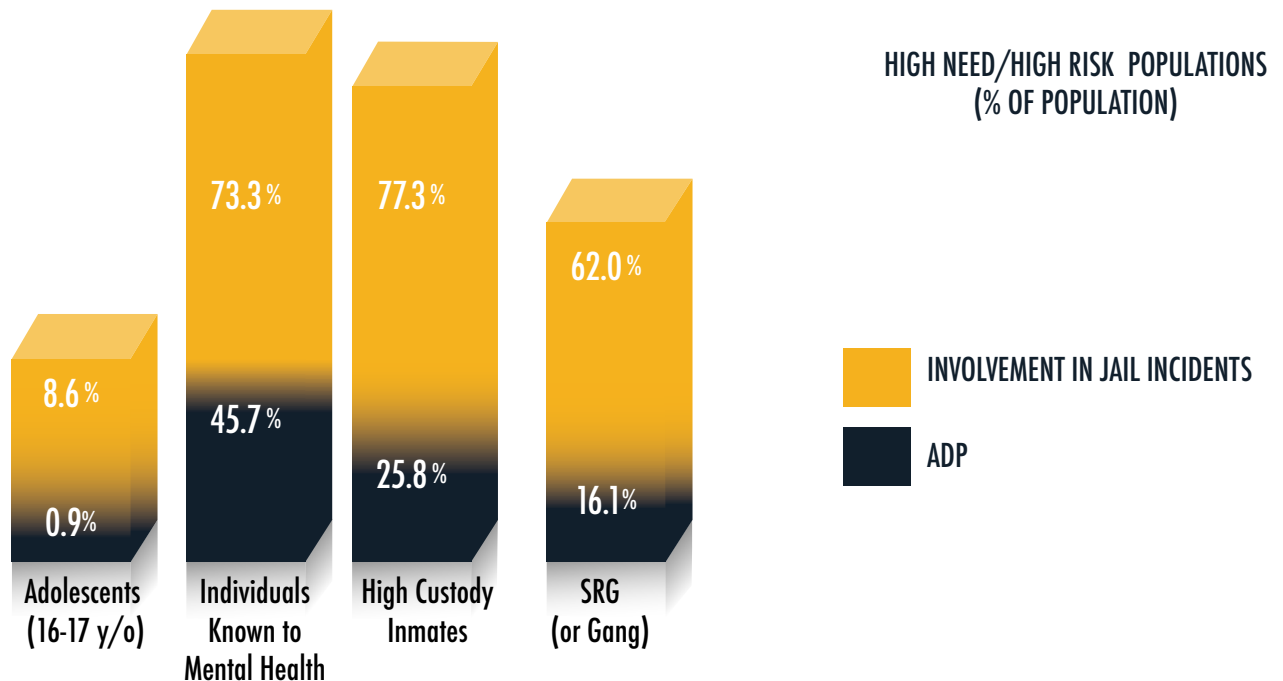
NYC Department of Correction at a Glance

Information for the 12 months of FY 2019

TOTAL POPULATION BY CATEGORY



SPECIAL INMATE POPULATION





NYC Department of Correction at a Glance

Information for the 12 months of FY 2019

ADP BY TOP ARREST CHARGE BASED ON THE 12 MONTHS FY19 CROSS-SECTIONS

CHARGE CATEGORY	ADP
MURDER/ATT MURDER/MANSLTER	946
ROBBERY	878
WARR/HOLDS	869
OTHER FELONIES	714
BURGLARY	692
ASSAULT	656
DRUG FEL SALE	501
WEAPONS	477
DRUG FEL POSSESS	472
OTHER MISD	344
GRAND LARCENY	300
OTHER SEXUAL OFFENSES	232
MISD LARCENY	212
MISD ASSAULT	199
DRUG MISD	122
RAPE/ATT RAPE	113
VEHICULAR	106
MISD WEAPONS	62
OTHER	37
MISSING	32
LOITER/PROSTITU	10
VIOLATIONS	9