



NYC Department of Correction at a Glance

Information through first 3 months of FY 2018



Average Daily Population 9,183

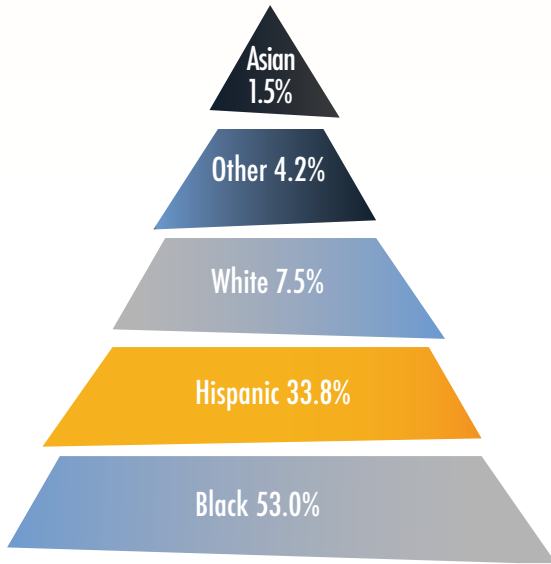
Average Number of Inmates Transported to Court Daily 758

Average Daily Visitors to Rikers Island 1,028

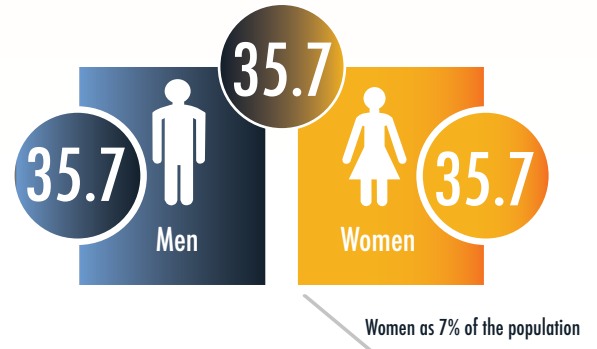
Total admissions 13,851

Total discharges 13,903

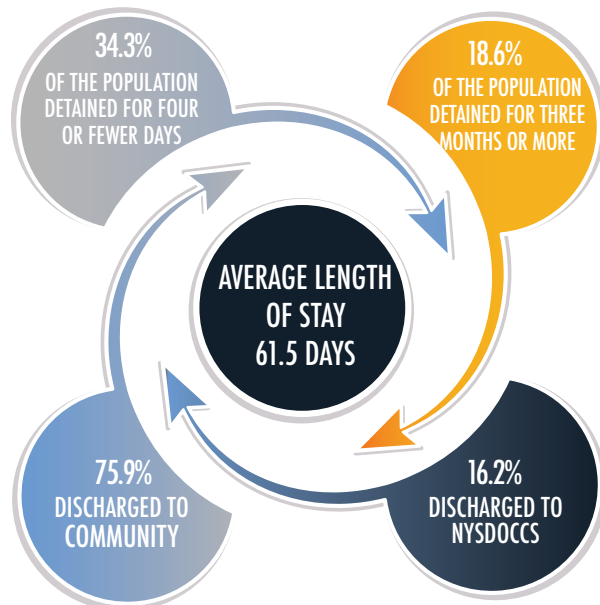
RACIAL/ETHNIC BREAKDOWN



AVERAGE AGE OF AN INMATE ADMITTED TO DOC



AVERAGE LENGTH OF STAY

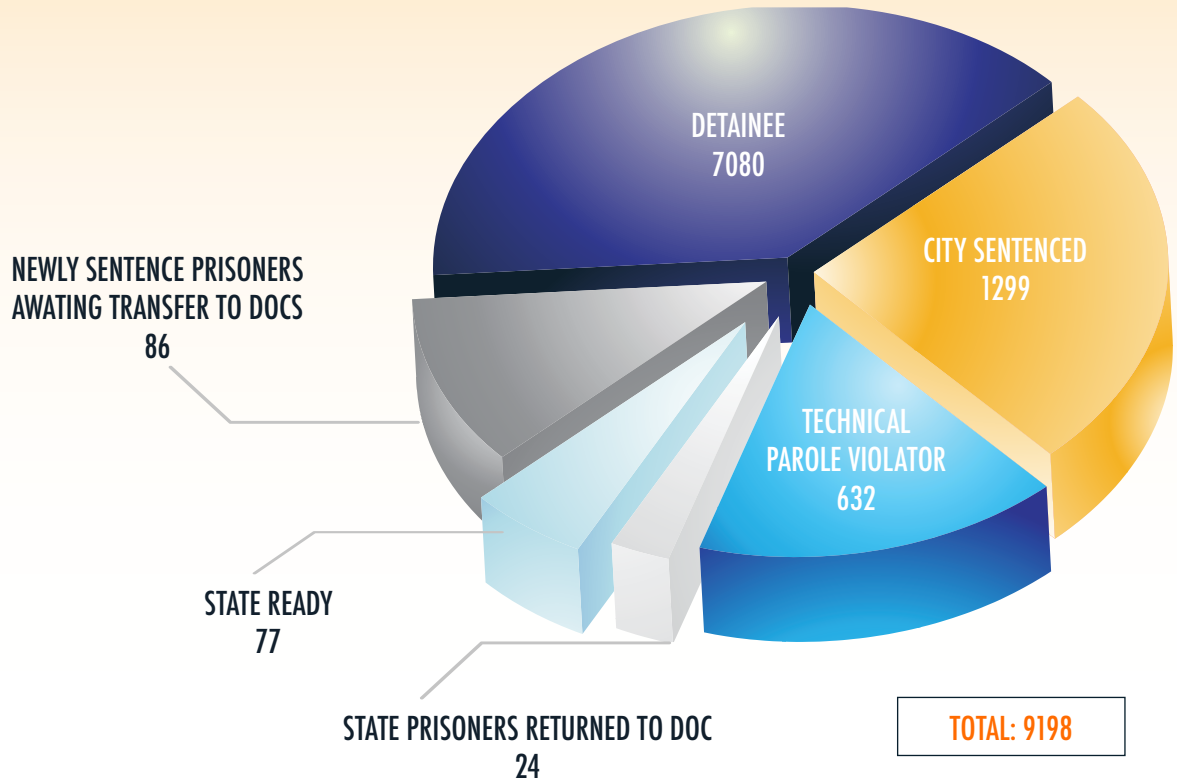




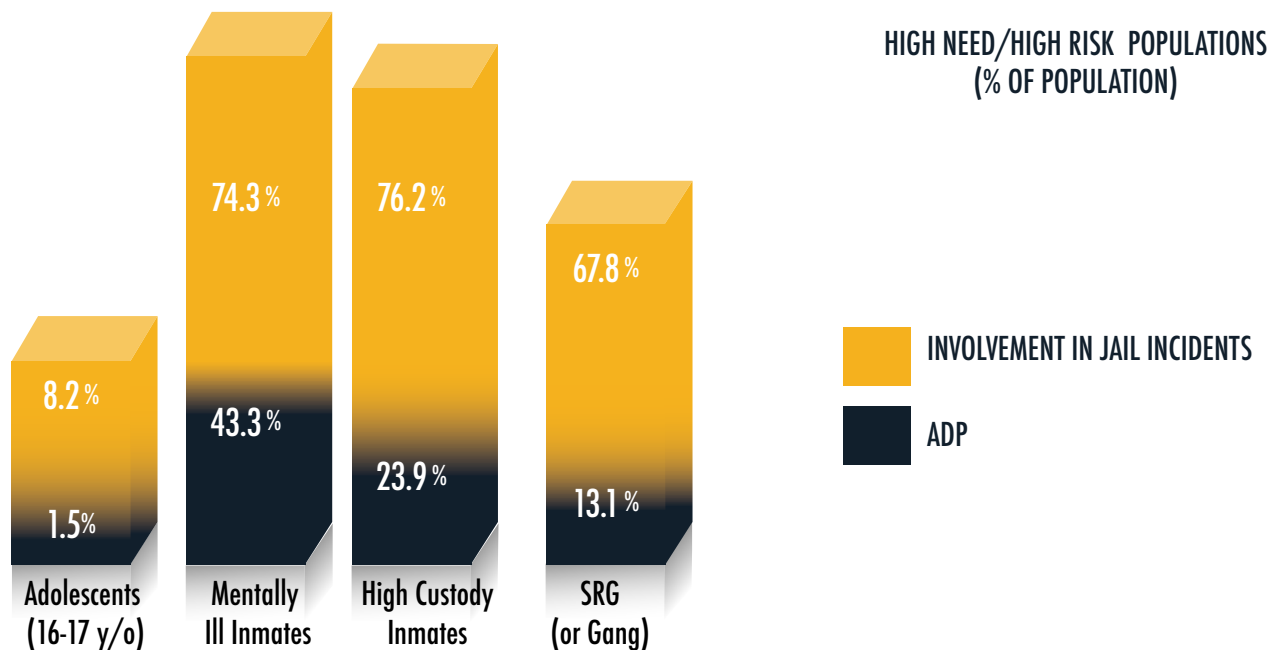
NYC Department of Correction at a Glance

Information through first 3 months of FY 2018

NEWLY SENTENCED PRISONERS AWAITING TRANSFER TO NYSDOCCS



SPECIAL INMATE POPULATION





NYC Department of Correction at a Glance

Information through first 3 months of FY 2018

ADP BY TOP ARREST CHARGE BASED ON 1ST 3 MONTHS FY18 CROSS-SECTIONS

CHARGE CATEGORY	ADP
ROBBERY	1,075
MURDER/ATT MURDER/MANSLTER	980
OTHER FELONIES	856
WARR/HOLDS	877
ASSAULT	798
DRUG FEL SALE	655
DRUG FEL POSSESS	694
BURGLARY	705
WEAPONS	554
OTHER MISD	469
GRAND LARCENY	337
MISD LARCENY	222
MISD ASSAULT	229
OTHER SEXUAL OFFENSES	201
DRUG MISD	161
RAPE/ATT RAPE	103
VEHICULAR	144
MISD WEAPONS	83
OTHER	30
MISSING	38
VIOLATIONS	7
LOITER/PROSTITU	6