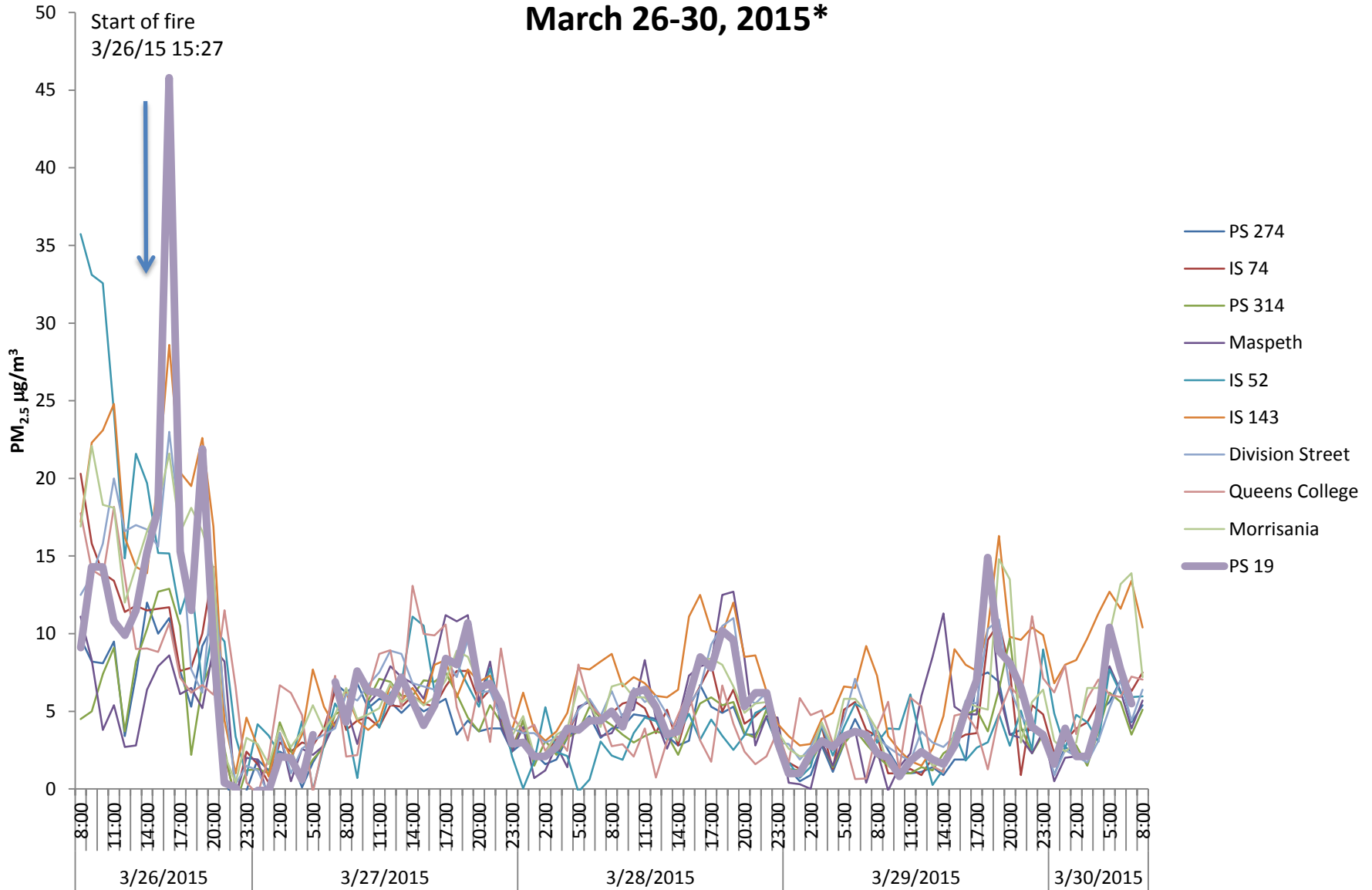


# New York State Department of Environmental Conservation Air Monitoring for Particulate Matter (PM<sub>2.5</sub>) NYC monitors, Hourly Average

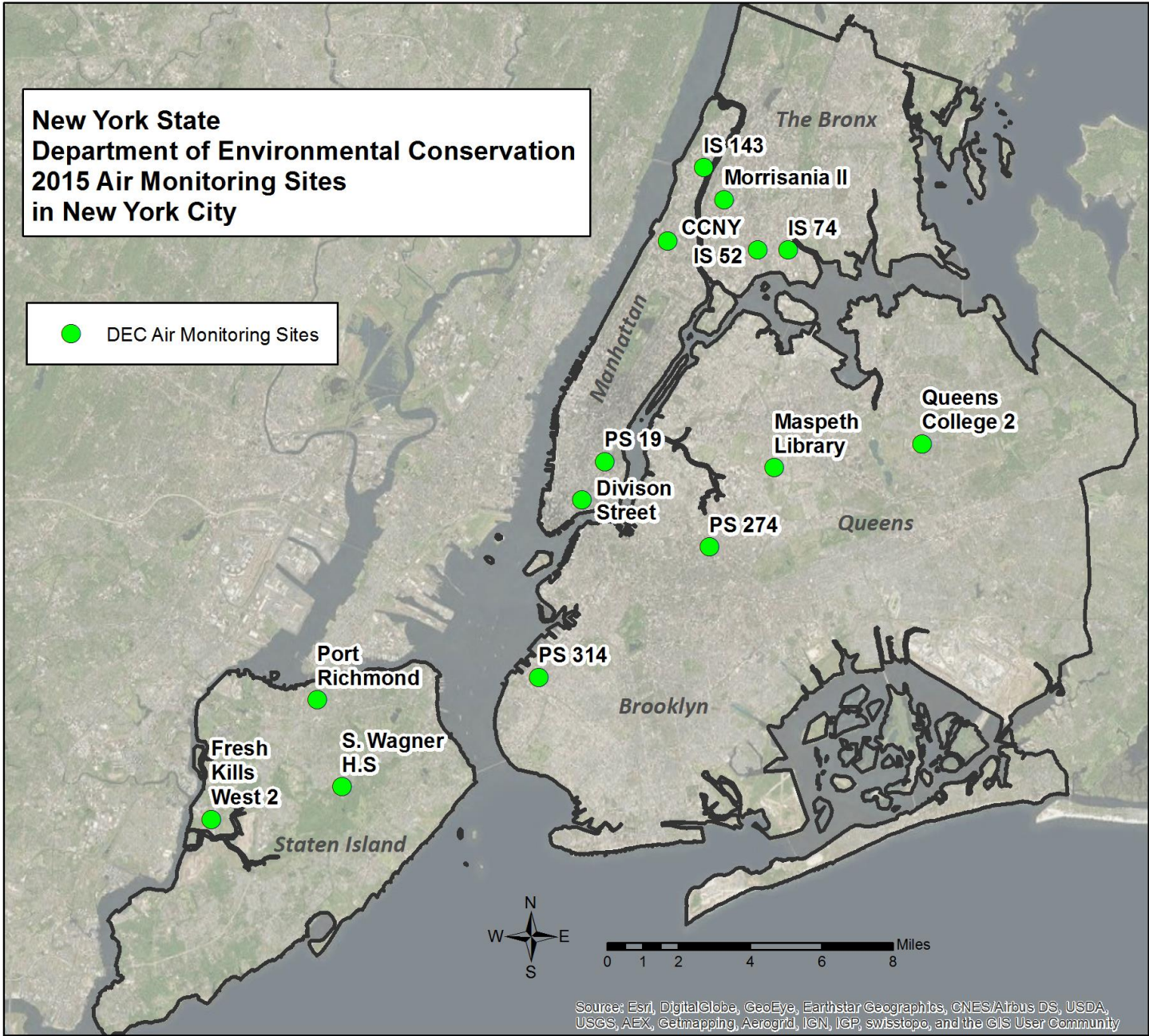
## March 26-30, 2015\*



\*<http://www.dec.ny.gov/airmon/getParameters.php?GroupNo=112>, Downloaded 3/30/15, 10:20

**New York State  
Department of Environmental Conservation  
2015 Air Monitoring Sites  
in New York City**

● DEC Air Monitoring Sites



Source: Esri, DigitalGlobe, GeoEye, Earthstar Geographics, CNES/Airbus DS, USDA, USGS, AEX, Getmapping, Aerogrid, IGN, IGP, swisstopo, and the GIS User Community