



NEW YORK CITY DEPARTMENT OF
HEALTH AND MENTAL HYGIENE
Mary T. Bassett, MD, MPH
Commissioner

Percent of infants[†] who received hepatitis B vaccine within 3 days[‡] of birth by delivery facility, NYC, 2015

Facility #	Facility Name	Total Births	Births <2,000g	Births ≥2,000g	Infants Vaccinated [‡]	% Vaccinated ^{††}	% of Total NYC Infants Not Vaccinated
1	Bellevue Hospital Center	1447	69	1378	1277	92.7%	0.5%
2	Bronx-Lebanon Hospital Center	2233	85	2148	2128	99.1%	0.3%
3	Brookdale University Hospital and Medical Center	1090	56	1034	1024	99.0%	0.2%
4	Brooklyn Birthing Center	114	0	114	5	4.4%	0.3%
5	Brooklyn Hospital Center	2180	113	2067	2059	99.6%	0.4%
6	Coney Island Hospital	1238	25	1213	1222	100.7%	0.0%
7	Elmhurst Hospital Center	3047	70	2977	3032	101.8%	0.0%
8	Flushing Hospital Medical Center	2838	86	2752	2747	99.8%	0.3%
9	Harlem Hospital Center	869	32	837	803	95.9%	0.2%
10	Jacobi Medical Center	1965	99	1866	1784	95.6%	0.5%
11	Jamaica Hospital Medical Center	2351	73	2278	2275	99.9%	0.2%
12	Kings County Hospital Center	2241	97	2144	2160	100.7%	0.2%
13	Lenox Hill Hospital	4307	131	4176	2927	70.1%	4.0%
14	Lincoln Medical and Mental Health Center	2144	83	2061	2133	103.5%	0.0%
15	Long Island Jewish Medical Center	8199	305	7894	6576	83.3%	4.8%
16	NYU Langone Hospital – Brooklyn	4075	71	4004	3733	93.2%	1.0%
17	Maimonides Medical Center	8577	193	8384	4193	50.0%	12.9%
18	Metropolitan Hospital Center	958	19	939	934	99.5%	0.1%
19	Montefiore Medical Center - Weiler Campus	4204	190	4014	3678	91.6%	1.5%
20	Montefiore Medical Center - Wakefield Campus	2521	94	2427	2217	91.3%	0.9%
21	Mount Sinai Beth Israel	3676	69	3607	1434	39.8%	6.6%
22	Mount Sinai Hospital	7693	242	7451	1373	18.4%	18.5%
23	Mount Sinai West	5856	142	5714	3594	62.9%	6.6%
24	New York-Presbyterian / Queens	4342	66	4276	4076	95.3%	0.8%
25	New York-Presbyterian / Brooklyn Methodist Hospital	5731	133	5598	2712	48.4%	8.9%
26	New York-Presbyterian / Columbia University Medical Center	4536	312	4224	3437	81.4%	3.2%



Percent of infants[†] who received hepatitis B vaccine within 3 days[‡] of birth by delivery facility, NYC, 2015 (cont.)

Facility #	Facility Name	Total Births	Births <2,000g	Births ≥2,000g	Infants Vaccinated [‡]	% Vaccinated ^{†‡}	% of Total NYC Infants Not Vaccinated
27	New York-Presbyterian / Lower Manhattan Hospital	2432	26	2406	2017	83.8%	1.2%
28	New York-Presbyterian / Allen Hospital	2192	5	2187	2082	95.2%	0.3%
29	New York-Presbyterian / Weill Cornell Medical Center	5393	173	5220	3907	74.8%	4.4%
30	North Central Bronx Hospital	1103	19	1084	981	90.5%	0.4%
31	North Shore University Hospital at Forest Hills	1834	19	1815	1784	98.3%	0.1%
32	NYU Langone – Tisch Hospital	5942	151	5791	2567	44.3%	9.9%
33	Queens Hospital Center	1608	62	1546	1549	100.2%	0.2%
34	Richmond University Medical Center	2860	91	2769	1092	39.4%	5.2%
35	St. Barnabas Hospital	1002	39	963	988	102.6%	0.0%
36	St. John's Episcopal Hospital	684	16	668	634	94.9%	0.1%
37	Staten Island University Hospital (North)	2911	54	2857	1580	55.3%	3.9%
38	University Hospital of Brooklyn – SUNY Downstate Medical Center	1357	80	1277	1148	89.9%	0.6%
39	Woodhull Medical and Mental Health Center	1724	33	1691	1623	96.0%	0.3%
40	Wyckoff Heights Medical Center	1340	27	1313	1247	95.0%	0.3%
Total	Overall Coverage	120814	3650	117164	86732	74.0%	n/a

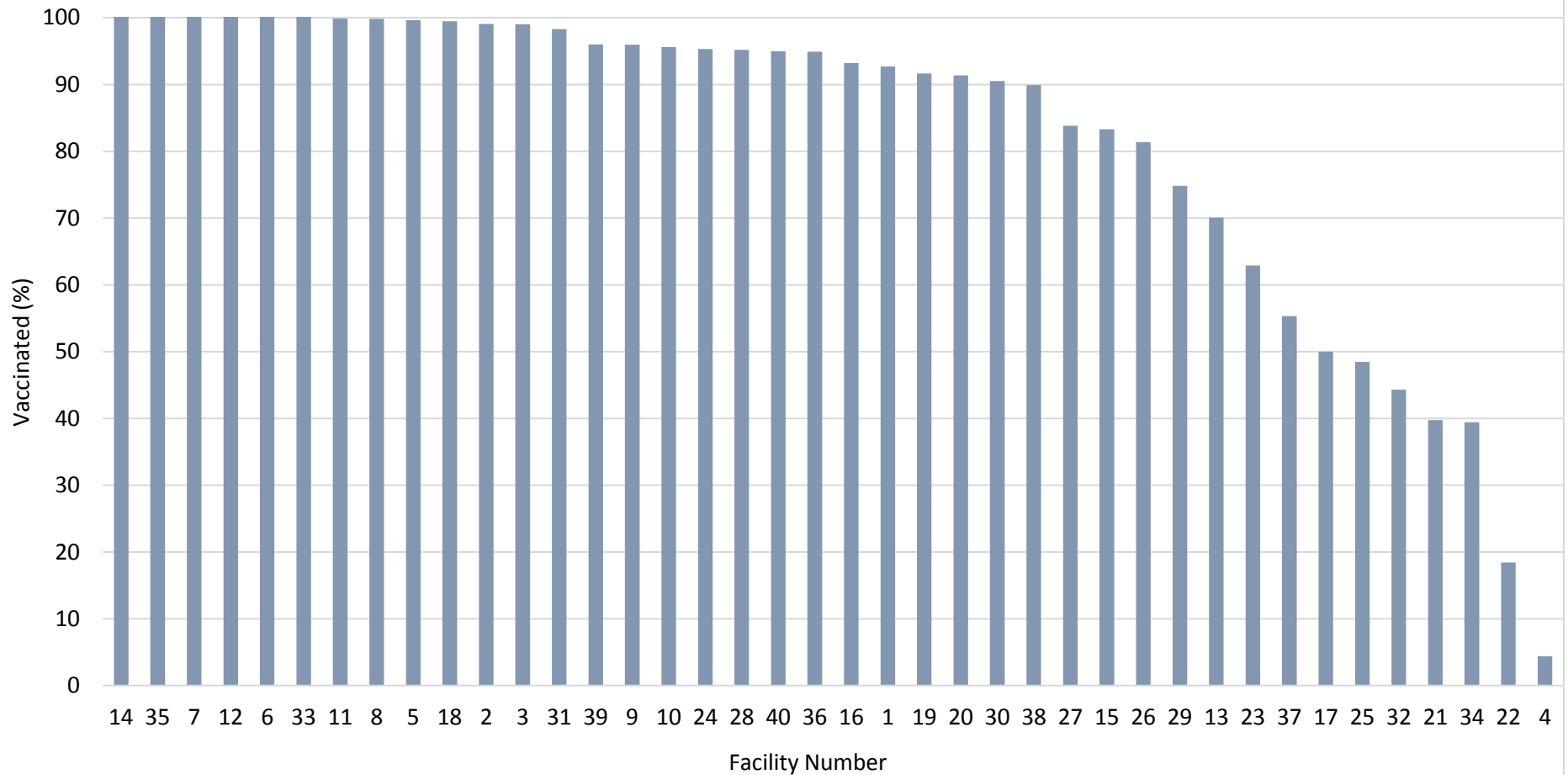
Average Coverage 82.0%
Median Coverage 94.9%

[†] This measure is for infants born in 2015 in a NYC delivery facility. The numerator includes infants who received hepatitis B vaccine regardless of birth weight; and the denominator includes infants with birth weight ≥2,000 grams. (Source: NYC DOHMH Office of Vital Statistics)

[‡] Includes hepatitis B vaccine administered on day 0 (birth), day 1, day 2 or day 3 of life. (Source: NYC Citywide Immunization Registry)



Percent of infants[†] who received hepatitis B vaccine within 3 days[‡] of birth by delivery facility, NYC, 2015



[†] This measure is for infants born in 2015 in a NYC delivery facility. The numerator includes infants who received hepatitis B vaccine regardless of birth weight; and the denominator includes infants with birth weight $\geq 2,000$ grams. (Source: NYC DOHMH Office of Vital Statistics)

[‡] Includes hepatitis B vaccine administered on day 0 (birth), day 1, day 2 or day 3 of life. (Source: NYC Citywide Immunization Registry)