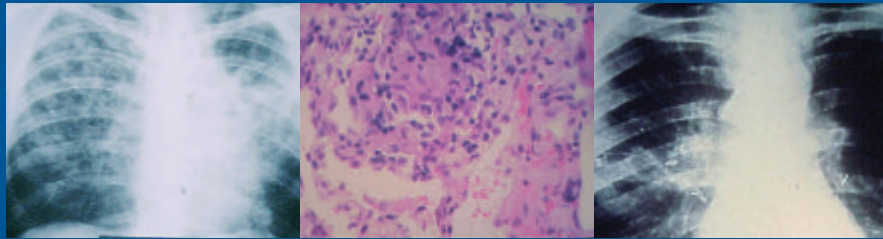


Tuberculosis Verem
Consumption Tibèkilož
결핵 Gruzlica
Tuberkulozi 結核



Kgotlota Ethuna
Batuk 肺結核
Kering
Sanba Nekersa Phthisis Qaaxo
Tuberculose Tuberkuloosi

CLINICAL POLICIES AND PROTOCOLS

Bureau of Tuberculosis Control
New York City Department of Health and Mental Hygiene

Table of Contents

Section I.

Introduction to the 4th Edition

Director’s Statement	11
About the 4th Edition	12
The 2003 national guidelines.....	12
Rifapentine	12
Use of fluoroquinolones in the treatment of tuberculosis	13
BTBC guidelines vs. ATS/CDC/IDSA guidelines.....	13
Treatment of patients who are co-infected with tuberculosis and HIV.....	14
Hospitalization and discharge guidelines	14
Targeted testing and latent tuberculosis infection	15
Key sources.....	15
Appendices	15
Tuberculosis Surveillance and Epidemiology	15
Surveillance.....	15
Tuberculosis epidemiology in New York City.....	16
Confidentiality and Health Insurance Portability and Accountability Act Regulations	16
Laws governing confidentiality	16
HIPAA privacy rule	17
Talking to tuberculosis patients and contacts	18
Exceptions to confidentiality rules.....	18
Mission Statement	20
Key Sources	21

Section II.

Initial Evaluation of Suspected Tuberculosis

Pathogenesis of Tuberculosis	25
Transmission, infection and proliferation	25
Host immune response	25
Inflammation, necrosis and cavity formation	25
Physical Evaluation of Adults and Children	26
Radiographic Evaluation	27
Microbiologic Evaluation	27
Specimen collection	27
Nucleic acid amplification	30
Culture	31
Species identification	32
Drug susceptibility testing	32
Genotyping	34
False-positive results.....	35
Objectives of false-positive <i>M. tb</i> specimen investigations.....	35
Methods used to identify false-positive <i>M. tb</i> cultures.....	35
Interpreting results of the false-positive investigation	36
Other Laboratory Tests	36
Classification of Suspected Tuberculosis Patients	36
Tuberculosis in Childhood	37
Medical evaluation.....	37
Chest X-ray in children	37
Congenital and neonatal tuberculosis	38
Evaluating neonates for tuberculosis.....	38
Bacille Calmette-Guérin vaccination.....	38
Key Sources	40

Table of Contents

Section III.

Treatment of Pulmonary Tuberculosis

Regimens for Treatment of Drug-Susceptible Tuberculosis	43
Standard regimen	43
Length of treatment	43
Intermittent Regimens	44
Rifapentine	46
Patient selection	46
Treatment length	48
Dosing	48
Monitoring	48
Adverse reactions	48
Use in pregnant and breast-feeding women	48
Use in children	48
Drug interactions	48
Treatment of Co-existent Tuberculosis and HIV	49
Antiretroviral drugs and rifamycins	49
Treatment options	52
General considerations	52
Immune reconstitution inflammatory syndrome	56
Regimens for Pregnant Women	56
Standard regimen for pregnant women	57
Length of treatment	57
Regimen for pregnant women suspected or known to have tuberculosis resistant to isoniazid and rifampin (MDRTB)	58
Anti-tuberculosis medications in breast-feeding women	58
Regimens for Children	59
Standard regimen	59
Length of treatment regardless of culture results	60
Adverse events in children	60

Regimens for Patients with Chronic Renal Failure	60
Regimens for Patients with Liver Disease	61
The Use of Pyridoxine (Vitamin B₆) in Tuberculosis Treatment	62
Anti-Tuberculosis Drugs and Meals	62
Directly Observed Therapy	63
Protocol for providing directly observed therapy	63
Priority of patients for directly observed therapy	64
Determination of Treatment Completion	64
Interrupted or incomplete treatment	65
Renewal of tuberculosis treatment	65
Continuation of lapsed treatment	65
Protocols for reinstating treatment	65
Treatment failure	67
Treatment of coexistent tuberculosis and disseminated <i>Mycobacterium avium-intracellulare</i>	67
Key Sources	68

Section IV.

Evaluation and Treatment of Extrapulmonary Tuberculosis

Lymphatic Tuberculosis	72
Diagnosis	72
Treatment	72
Pleural Tuberculosis	72
Diagnosis	73
Treatment	73
Pericardial Tuberculosis	73
Diagnosis	73
Treatment	73

Table of Contents

Central Nervous System Tuberculosis73	Suggested Regimens for Specific Drug Resistance Patterns85
Diagnosis of meningeal tuberculosis.....73	Isoniazid resistance.....87 (with or without streptomycin resistance)
Treatment of meningeal tuberculosis.....74	Isoniazid and ethambutol resistance87 (with or without streptomycin resistance)
Tuberculoma.....75	Rifampin resistance87 (with or without streptomycin resistance)
Disseminated Tuberculosis75	Isoniazid and rifampin resistance.....88 (with or without streptomycin resistance)
Diagnosis76	Isoniazid, rifampin and ethambutol resistance89 (with or without streptomycin resistance)
Treatment76	Isoniazid, rifampin and pyrazinamide resistance89 (with or without streptomycin resistance)
Skeletal Tuberculosis76	Isoniazid, rifampin, pyrazinamide and ethambutol resistance.....90 (with or without streptomycin resistance)
Diagnosis76	Isoniazid, rifampin, ethambutol, streptomycin, kanamycin, ethionamide and rifabutin resistance (“Strain W”)90
Treatment76	Isoniazid, rifampin, ethambutol, streptomycin, fluoroquinolone resistance (with or without pyrazinamide or several injectable agents).....91
Genitourinary Tuberculosis76	Use of Newer Fluoroquinolones for Treating Tuberculosis91
Diagnosis76	Toxicities of Fluoroquinolones92
Treatment76	Photosensitivity and cardiotoxicity.....92
Gastrointestinal Tuberculosis77	Tendinopathy/tendonitis92
Diagnosis77	Hypoglycemia and hyperglycemia93
Treatment77	Long-term use of fluoroquinolones.....93
Peritoneal Tuberculosis77	Moxifloxacin.....93
Diagnosis77	Linezolid94
Treatment77	Clofazamine95
Cutaneous Tuberculosis77	Monitoring and Post-Treatment Evaluation95
Diagnosis78	Surgery for Pulmonary Tuberculosis95
Treatment78	
Disease Due to Intravesical Bacille Calmette-Guérin for Bladder Cancer78	
Diagnosis78	
Treatment78	
Key Sources80	
Section V.	
Treatment of Drug-Resistant Tuberculosis	
Principles of Treating Drug-Resistant Tuberculosis83	
Treatment principles83	
Monitoring principles.....84	
Principles for selected drugs85	

Table of Contents

Indications for surgery.....	96
Protocol for surgery referral.....	96
Key Sources	97
Section VI. Clinical Monitoring and Follow-up for Tuberculosis Treatment	
Monthly Clinical Evaluation	101
Physician assessment.....	101
Nurse assessment.....	105
Management of Adverse Reactions	106
Dermatitis.....	106
Hepatitis.....	107
Gastritis.....	110
Peripheral neuropathy.....	110
Joint manifestations.....	111
Renal manifestations.....	111
Hematologic manifestations.....	111
Visual manifestations.....	112
Audiovestibular manifestations.....	112
Drug desensitization.....	113
Paradoxical reactions, non-HIV related.....	113
Reporting adverse events.....	114
Grades of toxicity.....	114
Reclassification of Patients Suspected of Having Tuberculosis	114
Case Closing and End-of-Treatment Evaluation	115
Post-Treatment Evaluation	115
Candidates and procedures for post-treatment evaluation.....	115
Special considerations for patients who are HIV positive.....	117
The use of isoniazid after completion of tuberculosis treatment.....	117

Key Sources	118
--------------------------	-----

Section VII. **Infection Control**

Guidelines for Hospital Admission and Outpatient Management of Patients with Suspected or Confirmed Tuberculosis	121
---	-----

When to admit a patient with suspected or confirmed tuberculosis.....	121
--	-----

When not to admit a patient with suspected or confirmed tuberculosis.....	122
--	-----

Airborne Infection Isolation	122
---	-----

Initiating airborne infection isolation.....	122
--	-----

Discharge from airborne infection isolation.....	124
---	-----

Transfer to a nonairborne isolation area.....	124
--	-----

Influence of nucleic acid amplification on airborne infection isolation.....	125
---	-----

Guidelines for Returning Suspected or Known Tuberculosis Patients to Home	125
--	-----

Patients who can be discharged from the hospital.....	125
--	-----

Patients who should not be discharged from the hospital while still AFB smear positive or moved to a nonairborne isolation room.....	126
---	-----

Discharge of an AFB smear-negative individual directly from the hospital (suspected non-MDRTB).....	126
---	-----

Discharge of an individual with known or suspected MDRTB.....	126
--	-----

Guidelines for Returning Patients to Work, School or Other Congregate Settings	127
---	-----

Sputum AFB smear-positive patients known or likely to have drug-susceptible tuberculosis.....	127
---	-----

Table of Contents

Sputum AFB smear-negative patients known or likely to have drug-susceptible tuberculosis	127	The initial interview.....	139
Patients known or likely to have multidrug-resistant tuberculosis	129	Ensuring Effective Case Management	139
Home Isolation	129	Case manager initial interview topics	141
Infection Control Issues in Pregnancy and the Peripartum Period	130	Ensuring Adherence	142
Pregnant women with latent tuberculosis infection.....	130	Common problems with, and early indicators of, poor adherence	142
Infection Control in Chest Centers	131	Return-to-Supervision Activities	143
Triage	131	Follow-up for patients with tuberculosis who have missed visits and for suspected cases not on directly observed therapy.....	143
Temporary isolation	131	Follow-up on missed directly observed therapy visits.....	143
Masks and particulate respirators	131	Prioritizing patients for further return to supervision	143
Sputum Induction	132	Cohort Review	143
Staff involved in sputum induction.....	132	Prioritization for locating nonadherent patients.....	144
Equipment.....	132	Nonadherent patients who should be referred for detention.....	145
Preparing equipment and the sputum induction room.....	132	Regulatory Intervention Options	145
Preparing the patient.....	133	Commissioner's orders	145
Role of chest center staff during the induction procedure	133	Tuberculosis-related regulatory interventions sections of the current Health Code.....	147
Handling of the specimen.....	133	Procedures for infectious or potentially infectious patients who want to leave the hospital.....	148
Care of equipment and area between uses	133	Key Sources	149
Care of room and nebulizer at the end of the day.....	134	Section IX.	
Documentation.....	134	Contact Evaluation and Public Health Management	
Key Sources	135	Importance of Contact Evaluation	153
Section VIII.		Definitions.....	153
Case Management of Suspected Cases and Patients with Tuberculosis in the Field and Clinic		Confidentiality.....	155
Initial Case Management	139		
Objectives of case management.....	139		

Table of Contents

Epidemiological Assessment of Transmission	155
Priorities for Contact Investigation	155
Calculating the Infectious Period	161
Assessing Risk of Transmission	161
Evaluation and Management of Contacts	161
Symptom review	161
HIV screening and testing	162
Initial test for tuberculosis infection and follow-up	162
Medical evaluation and chest radiograph.....	163
Repeat test for tuberculosis infection and follow-up	163
Contact evaluation for patients whose cultures convert back to positive	164
Special Considerations for Infant and Child Contacts	164
Initial test for tuberculosis infection and chest X-ray for infants and children...164	
Repeat test for tuberculosis infection and chest X-ray for infants and children...165	
Contact Investigation for Smear-Negative, Culture-Pending Cases	165
Expanding a Contact Investigation	165
Airline Exposures	167
Source Case Investigation for Pediatric Tuberculosis Cases	167
Case Management and Treatment of Contacts with Latent Tuberculosis Infection	169
Responsibilities of the case manager	169
Return to supervision procedures for contacts being treated for latent tuberculosis infection.....	169
Key Sources	170

Section X.	
Testing for Latent Tuberculosis Infection	
Candidates for Testing for Latent Tuberculosis Infection	173
Priorities for testing.....	173
Testing pregnant women	176
Guidelines for testing specific high-risk groups.....	176
Administering the Tuberculin Skin Test	178
Preparation	178
Injection	178
Post-injection.....	178
Reading the Tuberculin Skin Test Reaction	179
Interpretation of the Tuberculin Skin Test Reaction	179
Interpretation of the Tuberculin Skin Test in Bacille Calmette-Guérin-Vaccinated Individuals	179
Role of Energy Testing	182
Two-Step Tuberculin Skin Testing	182
Background	182
Candidates and procedure for 2-step testing.....	183
Blood-Based Tests for Tuberculosis Infection: The QuantiFERON®-Gold Test	183
Advantages of the QFT-G test	183
Limitations of the QFT-G test.....	184
Eligibility and interpretation of the results of the QFT-G test	184
Costs and benefits of the QFT-G test.....	184
Future blood-based assays	184
Key Sources	185

Table of Contents

Section XI.

Latent Tuberculosis Infection: Evaluation, Treatment, Monitoring and Follow-up

Clinical Evaluation189

Medical history and physical examination189

Chest X-ray189

Patient chest X-ray classifications189

Laboratory tests for individuals being considered for latent tuberculosis infection treatment190

Candidates for Treatment for Latent Tuberculosis Infection192

Individuals who may have been recently infected192

Patients with clinical conditions associated with progression from latent tuberculosis to active tuberculosis192

Persons with immunosuppressive conditions or who are being treated with immunosuppressive agents.....192

Contacts who should start treatment regardless of tuberculin skin test reaction193

Pregnant women as candidates for latent tuberculosis infection treatment....193

Children as candidates for latent tuberculosis infection treatment193

Latent Tuberculosis Infection Treatment Regimens195

Standard regimen: isoniazid.....195

Alternative regimen: rifampin195

Rifampin and pyrazinamide198

Alternative regimens for contacts of persons with isoniazid- and rifampin-resistant tuberculosis (multidrug-resistant contacts)198

Regimens for women who become pregnant while taking treatment for latent tuberculosis infection200

Regimens for individuals with radiographic evidence of old, healed tuberculosis (Classes IV and V).....200

Treatment of close contacts with a prior positive test for tuberculosis infection.....202

Case Management of Patients with Latent Tuberculosis Infection202

Monitoring Patients During Treatment202

How providers can assess and promote adherence203

Ensuring Adherence During Treatment.....203

Managing Interruptions in Treatment203

Completing Treatment.....205

Follow-up for Patients Who Have Completed Treatment.....205

Key Sources206

Appendices

Appendix I-A

Dosages for Primary Medications Used in the Treatment of Tuberculosis.....208

Appendix I-B

Dosages for Reserve Medications Used in the Treatment of Tuberculosis.....210

Appendix I-C

The Use of Antituberculosis Drugs During Pregnancy, Breastfeeding, Tuberculosis Meningitis, and Renal and Hepatic Failure.....211

Appendix I-D

Late Complications of Treated Pulmonary Tuberculosis.....212