

Alvin T. Turner

**TUBERCULOSIS
IN NEW YORK CITY
1958**

FURTHER PROGRESS IN THE SUPPRESSION OF TUBERCULOSIS

♦

A review by

ANTHONY M. LOWELL

♦

**NEW YORK TUBERCULOSIS
AND HEALTH ASSOCIATION**



TUBERCULOSIS
IN NEW YORK CITY

1958

Further Progress in the Suppression of Tuberculosis

*

A review by
ANTHONY M. LOWELL

*

NEW YORK TUBERCULOSIS
AND HEALTH ASSOCIATION

1959

TUBERCULOSIS HIGHLIGHTS
NEW YORK CITY
YEAR 1958

TUBERCULOSIS, among eight million New York City residents, was responsible for:-

- 833 deaths in New York City.
- 5,482 newly reported with active disease,
- 18,747 known active "cases" on record during the year, and
- 10,153 persons still under medical care or supervision on December 31.

* * *

Thousands of other New Yorkers were going about the city, with unknown active tuberculosis, unaware of serious illness. These unwitting potential spreaders of disease remain a constant health threat to their families and other associates.

* * *

Among 312,815 persons having x-ray examinations at the time of admission to General Hospitals it was noted that there were 1,727 cases of active pulmonary tuberculosis.

The Department of Health and the Tuberculosis Associations took 487,325 x-rays in case-finding programs.

Specific antibacterial drug treatment for tuberculosis by the Department of Health alone was being provided to 6,116 individuals by the end of the year.

At year-end 10,153 residents with active tuberculosis were under medical care and supervision. Of these 5,122 were in hospitals and sanatoria, 3,054 attending clinics, 690 under private physicians' care, and 1,287 under other types of supervision.

A select committee of the Department of Hospitals made a careful survey of tuberculosis patients in fourteen public and non-public institutions caring for New York City patients. It was found possible to reduce the bed capacity by 750, but nearly 4,000 beds were still being utilized.

* * *
* *
*

TUBERCULOSIS TODAY

A measurable degree of improvement was recorded for New York City last year in tuberculosis morbidity and mortality. It was a year in which new gains were made in the fight to suppress tuberculosis as a serious threat to life and good health.

During the year 5,482 newly reported cases of tuberculosis were brought to the attention of public health authorities. This number reflected ten percent decline from the year before. The decline was shared by the four largest boroughs of the city.

Tuberculosis mortality declined to a new low with 833 deaths recorded in 1958 as compared to 982 in 1957.

Although many thousands of New Yorkers were treated for tuberculosis during the year, on December 31, 1958 there were still 10,153 persons with active disease listed on the Department of Health tuberculosis register as under care or supervision. The majority of them were under care of hospitals or sanatoria (5,122), and various tuberculosis clinics (3,054) throughout the city.

In the main it can be said that the year 1958 was one of achievement in the continued struggle against tuberculosis in New York City.

* * *

Special acknowledgments are due the Bureau of Tuberculosis, the Bureau of Records and Statistics of the Department of Health and also the Department of Hospitals, City of New York, who have generously made available important detailed statistics of their community-wide activities. Thanks are also due the cooperating tuberculosis hospitals throughout the New York Metropolitan Area, and other Authorities who have continued to furnish reports and have assisted in providing basic information on tuberculosis. -- A.M.L.

TUBERCULOSIS MORBIDITY AND MORTALITY, CITY OF NEW YORK, 1958 AND 1957

A - New Cases of Tuberculosis Reported in Each Borough

Boroughs	Number of New Cases			Case Rate per 100,000		
	1958	1957	Change 1958/57	1958	1957	Change 1958/57
Manhattan	2,602	3,002	- 400 = 13%	145.0	167.3	- 22.3 = 13%
Bronx	751	821	- 70 = 9%	52.7	57.6	- 4.9 = 9%
Brooklyn	1,501	1,598	- 97 = 6%	57.7	61.4	- 3.7 = 6%
Queens	559	634	- 75 = 12%	31.7	36.0	- 4.3 = 12%
Richmond	69	62	+ 7 = 11%	32.5	29.2	+ 3.3 = 11%
New York City	5,482	6,117	- 635 = 10%	70.3	78.5	- 8.2 = 10%

B - Total Register of Tuberculosis Cases* By Boroughs During 1958

Boroughs	Population April 1 1957 ^x	Cases in Register on Jan. 1 1958	New Cases Reported during year	Old Cases Re-summed	Total Known Cases during 1958	Removed from Register during year	Remaining in Register on Dec. 31 1958
Manhattan	1,794,069	5,569	2,602	983	9,154	4,250	4,904
Bronx	1,424,367	1,472	751	217	2,440	1,117	1,323
Brooklyn	2,602,433	2,804	1,501	508	4,813	2,254	2,559
Queens	1,762,582	1,407	559	163	2,129	883	1,246
Richmond	212,020	112	69	30	211	90	121
New York City..	7,795,471	11,364	5,482	1,901	18,747	8,594	10,153

C - Mortality From All Forms of Tuberculosis, By Boroughs

Boroughs	Deaths within City			Death Rate per 100,000		
	1958	1957	Change 1958/57	1958	1957	Change 1958/57
Manhattan	345	421	- 76 = 18%	19.2	23.4	- 4.2 = 18%
Bronx	114	128	- 14 = 11%	8.0	9.0	- 1.0 = 11%
Brooklyn	206	242	- 36 = 15%	7.9	9.3	- 1.4 = 15%
Queens	110	115	- 5 = 4%	6.2	6.5	- 0.3 = 5%
Richmond	13	12	+ 1 = 8%	6.1	5.7	+ 0.4 = 7%
New York City Residents	788	918	- 130 = 14%	10.1	11.8	- 1.7 = 14%
Total recorded#	833	982	- 149 = 15%	10.7	12.6	- 1.9 = 15%

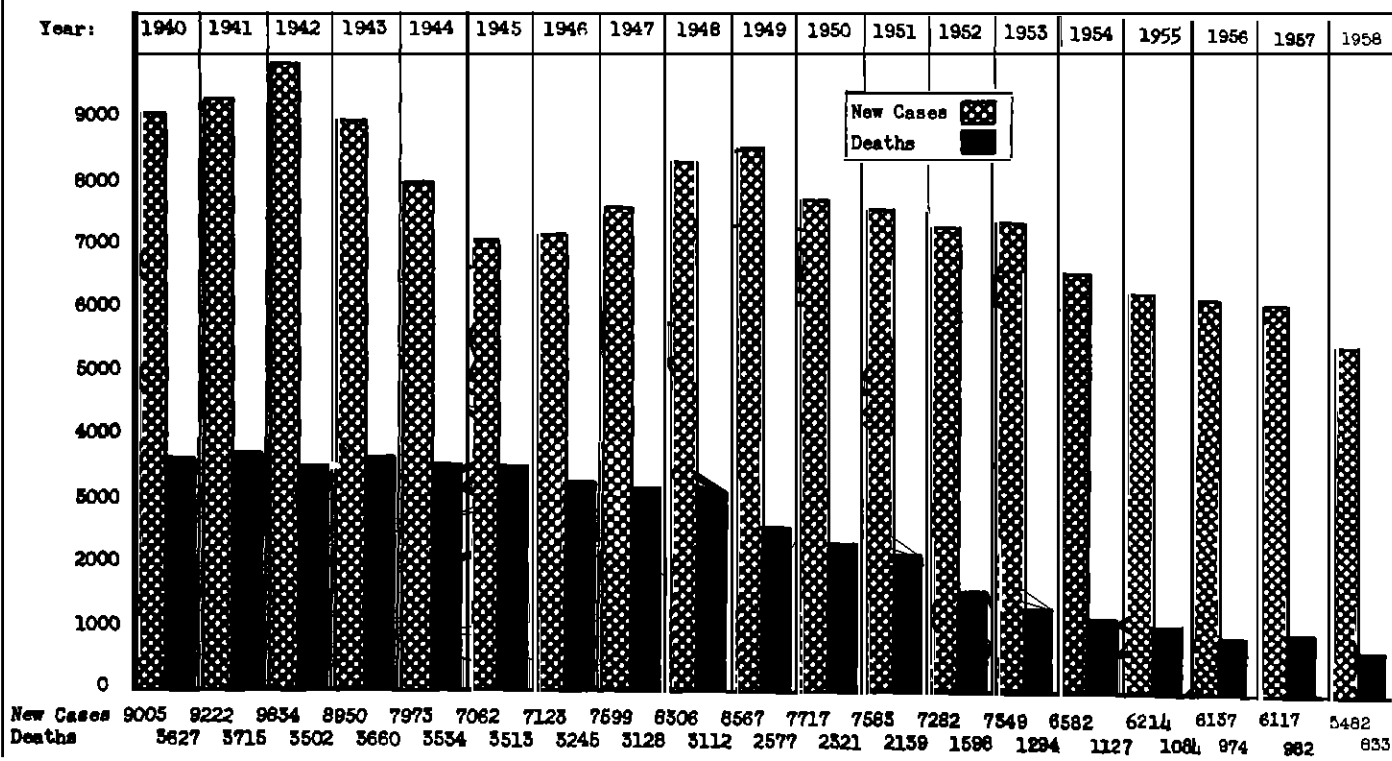
#Including non-residents and persons with unknown address.

D - Classification, Tuberculosis Cases* In Register (end of year)

Classification	On Dec. 31, 1958, by Boroughs and for entire City						Total	Change 1958/57
	Man.	Bronx	Bklyn.	Queens	Rich.			
In institutions in city..	2,220	490	1,127	497	44	4,378	- 502 = 10%	
Out of town in sanatoria.	406	75	168	76	19	744	- 132 = 15%	
Total hospitalized	2,626	565	1,295	573	63	5,122	- 634 = 11%	
Health Department clinics	741	324	757	280	21	2,123	- 227 = 10%	
Other clinics	495	165	179	86	6	931	- 200 = 18%	
Attending clinics	1,236	489	936	366	27	3,054	- 427 = 12%	
Private physicians	149	100	191	225	25	690	- 88 = 11%	
"Home care" [†]	9	1	2	7	0	19	- 40 = 68%	
"Pending" [‡]	777	136	105	14	5	1,037	- 5 = 0.4%	
Out of town, not in hosp.	18	7	1	2	0	28	- 10 = ..	
Other	89	25	29	59	1	203	- 7 = ..	
Total in register	4,904	1,323	2,559	1,246	121	10,153	-1,211 = 11%	

*All forms: pulmonary and non-pulmonary. †Under medical supervision and treatment by Department of Hospitals. ‡Type of care not confirmed. ¶Because of death, leaving city, recovery. Note: "Register" refers to residents of borough. ^xPopulation, 1957 enumeration by U.S. Bureau of the Census. Compiled from reports, courtesy of the Department of Health, City of New York, by New York Tuberculosis and Health Association.

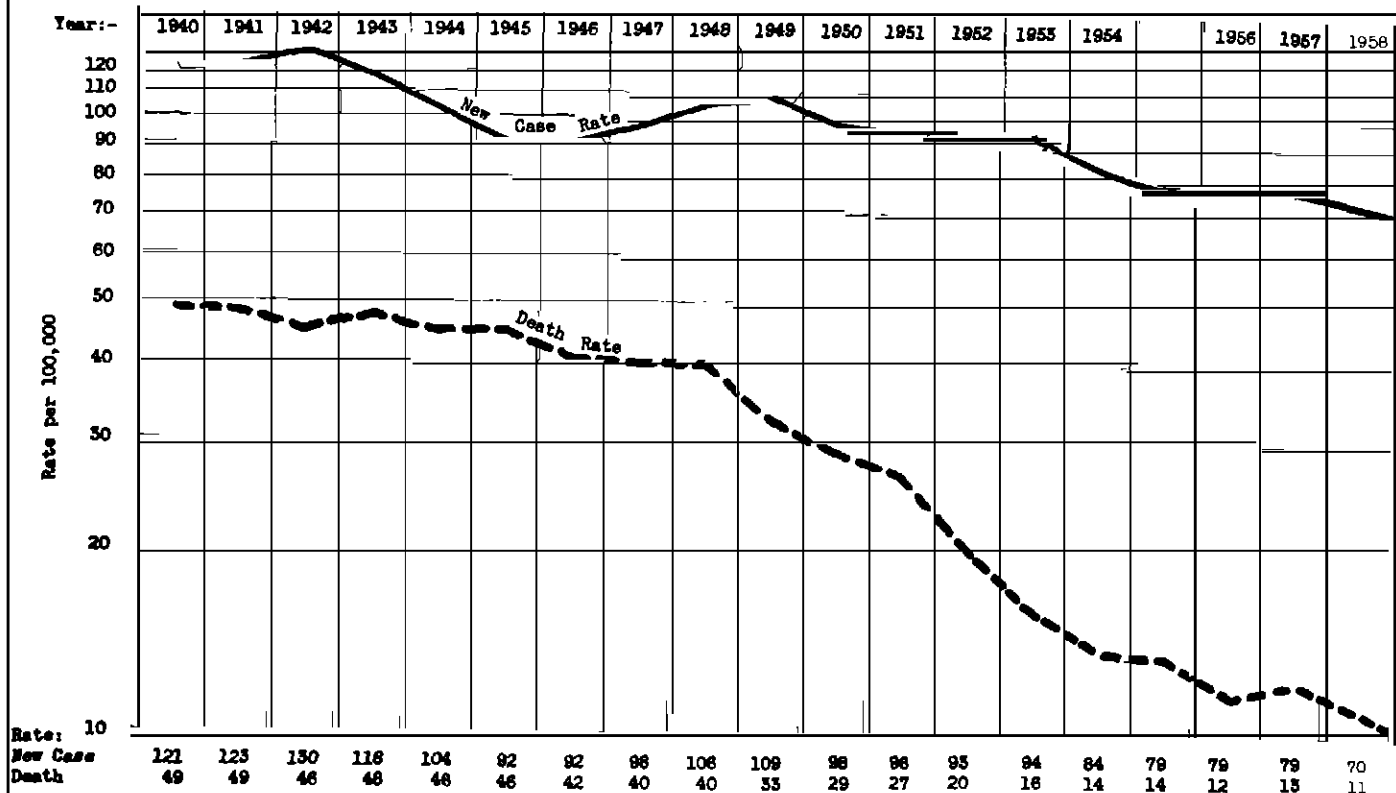
NEW CASES AND DEATHS, TUBERCULOSIS, NEW YORK CITY, SINCE 1940



Based on reports by courtesy of the Bureau of Records and Statistics, Department of Health, City of New York.

Statistical Division
New York Tuberculosis and Health Assn.

NEW CASE RATE AND DEATH RATE, TUBERCULOSIS, NEW YORK CITY, SINCE 1940



Based on reports by courtesy of the Bureau of Records and Statistics, Department of Health, City of New York.

Statistical Division
New York Tuberculosis and Health Assn.

NEW CASES OF TUBERCULOSIS REPORTED DURING THE YEAR

During the year both public and private health agencies continued in their drive to find those New Yorkers who harbor active tuberculosis. The discovery of previously unknown tuberculosis is one of the prime objectives of the city-wide program.

In 1958 there were 5,482 new cases of active tuberculosis discovered compared to 6,117 cases in 1957. As was anticipated, with fewer infectors about in the community the annual toll of new cases has declined. Almost half of the new cases in 1958 (2,602) were registered as residents of Manhattan, producing a case rate of 145 for this borough or several times the rates in the other four boroughs (Brooklyn=58, Bronx=53, Richmond=33, Queens=32). Although there was a general decrease of new cases for the city as a whole, seven of the health center districts had a few more new cases reported in 1958 than in 1957.

Of all persons found to have tuberculosis (new cases), 51 percent were white, 32 percent Negro and 12 percent Puerto Rican.

NEW CASES OF TUBERCULOSIS BY BOROUGH, NEW YORK CITY, 1950-1958

Year	Manhattan	Bronx	Brooklyn	Queens	Richmond	New York City
NEW CASES REPORTED						
1950	3,847	944	1,948	859	119	7,717
1951	3,736	990	1,866	883	108	7,583
1952	3,567	910	1,875	825	105	7,282
1953	3,690	904	1,845	812	98	7,349
1954	3,404	804	1,619	672	83	6,582
1955(*)	2,994	872	1,644	605	99	6,214
1956	2,895	850	1,700	626	66	6,137
1957	3,002	821	1,598	634	62	6,117
1958	2,602	751	1,501	559	69	5,482
CASE RATE PER 100,000(†)						
1950	197	65	71	55	62	98
1951	194	68	69	56	55	96
1952	187	63	70	51	53	93
1953	196	63	69	49	49	94
1954	183	56	61	40	41	84
1955	163	61	62	35	48	79
1956	160	60	65	36	31	79
1957	167	58	61	36	29	79
1958	145	53	58	32	33	70

(*)Includes 51 infants, recently tuberculin positive, given prophylactic antimicrobials. (†)Case rates based on revised population estimates taking into account the 1957 enumeration by U.S. Bureau of the Census.

NEW CASES OF TUBERCULOSIS REPORTED IN NEW YORK CITY
By Health Center Districts, 1953-1958

Health Center DISTRICT	New Cases						Case Rate per 100,000(†)					
	1953	1954	1955	1956	1957	1958	1953	1954	1955	1956	1957	1958
Central Harlem ...	917	803	697	692	658	611	367	325	285	287	276	255
East Harlem	428	375	310	247	277	242	212	190	161	132	152	132
Kips Bay-Yorkville	154	159	121	100	116	95	63	67	52	43	51	42
Lower East Side ..	774	817	694	800	911	734	256	272	233	270	309	249
Lower West Side ..	702	621	591	494	568	477	224	200	192	162	188	157
Riverside	423	382	354	309	293	291	150	138	130	115	111	110
Washington Hgts. .	292	247	227	253	179	152	101	86	80	89	64	54
MANHATTAN:	3690	3404	2994	2895	3002	2602	196	183	163	160	167	145
Ford'm-Riverdale..	85	58	80	47	87	64	37	25	34	20	37	27
Morrisania	266	184	223	232	244	217	93	65	80	84	90	80
Mott Haven	256	287	307	325	245	203	114	129	139	148	112	93
Pelham Bay	69	61	50	41	44	42	44	38	30	24	25	24
Tremont	129	133	145	132	114	130	45	47	52	48	42	48
Westchester	99	81	67	73	87	95	39	32	26	29	34	37
BRONX:	904	804	872	850	821	751	63	56	61	60	58	53
Bay Ridge	99	95	73	76	76	70	32	31	24	25	26	23
Bedford	386	331	371	420	309	349	129	112	127	146	108	122
Brownsville	144	142	150	156	170	153	52	51	54	57	62	56
Bushwick	134	140	148	131	133	138	60	63	68	61	62	65
Flatbush	141	115	112	84	110	100	30	24	24	18	23	21
Fort Greene	310	283	267	279	251	231	140	128	121	127	114	105
Gravesend	78	56	64	73	66	65	28	20	23	26	23	23
Red Hook-Gowanus..	200	188	190	185	173	133	118	111	113	111	104	80
Sunset Park	147	102	130	112	124	88	70	49	64	56	64	45
Wmsbrg.-Greenp't..	206	167	139	184	186	174	100	83	70	94	97	90
BROOKLYN:	1845	1619	1614	1700	1598	1501	69	61	62	65	61	58
Astoria-L.I.City..	126	103	118	131	119	104	48	39	45	50	46	40
Corona	119	83	86	75	90	84	57	40	41	36	43	41
Flushing	137	122	102	76	86	97	38	32	26	18	20	22
Jamaica East	178	139	145	152	173	119	66	51	52	54	61	42
Jamaica West	153	142	80	107	97	99	54	49	28	36	33	33
Maspeth-Fer.Hills.	99	83	74	85	69	56	37	31	27	30	24	20
QUEENS:	812	672	605	626	634	559	49	40	35	36	36	32
RICHMOND:	98	83	99	66	62	69	49	41	48	31	29	33
NEW YORK CITY	7349	6582	6214	6137	6117	5482	94	84	79	79	79	70

(†)Case rates based on revised population estimates as of July 1 taking into account the 1950 and 1957 enumerations by U.S. Bureau of the Census. Rates for 1958 are based on the population enumerated by the U.S. Bureau of the Census on April 1, 1957.

Based on reports, Bureau of Records and Statistics, Department of Health, City of New York. Compiled by New York Tuberculosis and Health Association.

SOURCE OF REPORT More than half of all new cases of active tuberculosis were reported by hospitals (56%) and sanatoria (2%) last year, and this has been the experience for a number of years. The Department of Health clinics now account for one-fourth of all new cases registered. Private physicians reported only five percent of all new cases, but this low percentage may be due to the practice of physicians referring patients to clinics when tuberculosis is suspected so that the clinics are credited with making the final diagnosis.

SOURCE OF REPORT, NEW CASES OF TUBERCULOSIS*
New York City, 1950-1958

Source of Report	1950	1951	1952	1953	1954	1955	1956	1957	1958
NUMBER OF NEW CASES REPORTED									
Hospitals in city	3910	3907	3841	3894	3537	3335	3100	3209	3062
Health Dept. clinics ...	1755	1882	1747	1903	1696	1686	2035	1894	1535
Other clinics	730	735	658	615	569	495	497	465	406
Private physicians	779	607	633	526	419	392	276	239	247
Sanatoria, out of town..	362	335	307	305	266	214	125	151	116
Other sources	181	117	96	106	95	92	104	159	116
All sources	7717	7583	7282	7349	6582	6214	6137	6117	5482
PERCENT DISTRIBUTION BY SOURCE									
Hospitals in city	51%	51%	53%	53%	54%	54%	51%	52%	56%
Health Dept. clinics ...	23%	25%	24%	26%	26%	27%	33%	31%	28%
Other clinics	9%	10%	9%	8%	9%	8%	8%	8%	7%
Private physicians	10%	8%	9%	7%	6%	6%	4%	4%	5%
Sanatoria, out of town..	5%	4%	4%	4%	4%	3%	2%	2%	2%
Other sources	2%	2%	1%	1%	1%	2%	2%	3%	2%
All sources	100%	100%	100%	100%	100%	100%	100%	100%	100%

*Tuberculosis all forms. Note: Included are newly reported cases identified through death certificates.

STAGE OF DISEASE Among new cases the ratio of early to advanced stages of pulmonary tuberculosis has changed very little during the last decade. Whereas in 1950, 79 percent of the new cases reported were in the moderately or far advanced stages, in 1958 the proportion was 80 percent. In 1958, 20 percent of the new cases were in the minimal stage, 52 percent moderately advanced and 28 percent far advanced. The normal evolution of tuberculous disease, it has been suggested, has established a pattern. Under present conditions of case finding the proportion of new cases by stage remains more or less the same. In different places however the "levels" of incidence may vary.

STAGE OF DISEASE, NEW CASES OF PULMONARY TUBERCULOSIS
New York City, 1950-1958

Year	Stage of Disease						Un- known †	Dead ‡	Total New Cases §
	Minimal		Mod. Adv.		Far Adv.				
	Num- ber	Per- cent	Num- ber	Per- cent	Num- ber	Per- cent			
1950	1075	21%	2242	43%	1867	36%	776	558	6518
1951	1037	19%	2505	46%	1914	35%	452	423	6331
1952	970	18%	2535	49%	1703	33%	453	360	6021
1953	1020	19%	2709	50%	1681	31%	385	315	6110
1954	935	19%	2411	50%	1489	31%	332	272	5439
1955	834	19%	2166	49%	1421	32%	418	225	5064 ✓
1956	902	20%	2187	49%	1356	31%	454	190	5089
1957	827	18%	2429	54%	1232	28%	460	214	5162
1958	764	20%	2018	52%	1100	28%	478	153	4513

†Stage of disease unknown. ‡Cases identified through death certificate or reported at time of death only. §Pulmonary cases only.

Prior to 1955, cases of pulmonary tuberculosis were divided into two categories -- "pulmonary (adult)" and "primary (childhood pulmonary)." The distinction between pulmonary and primary tuberculosis was unsatisfactory as it did not fully reflect a difference in type of pulmonary disease. On January 1, 1955 the Bureau of Tuberculosis started classifying all cases of pulmonary tuberculosis into those cases 10 years of age and over, and those under 10 years of age. For statistical purposes, these two groups should be considered equivalent to the groups formerly labeled "pulmonary" and "primary" tuberculosis. (Abstract from 1955 SERVICE STATISTICS BOOK, Bureau of Records and Statistics, Department of Health, City of New York.)

CASES OF PULMONARY TUBERCULOSIS
 First Reported at Time of Death†
 New York City, 1950-1958

Year	Manhattan		Bronx		Brooklyn		Queens		Richmond		N.Y. City	
	Num-ber	Per-cent	Num-ber	Per-cent	Num-ber	Per-cent	Num-ber	Per-cent	Num-ber	Per-cent	Num-ber	Per-cent
1950	300	9.4%	55	7.1%	138	8.1%	59	7.6%	6	5.8%	558	8.6%
1951	216	7.0%	36	4.5%	115	7.3%	49	6.2%	7	7.4%	423	6.7%
1952	198	7.2%	39	5.5%	84	5.8%	35	5.2%	4	4.7%	360	6.4%
1953	190	6.8%	34	4.7%	70	4.7%	20	2.8%	4	5.2%	315	5.2%
1954	144	5.5%	37	5.9%	70	5.4%	19	3.3%	2	2.7%	272	5.3%
1955	123	4.8%	32	4.3%	50	3.5%	14	2.5%	6	6.9%	225	4.2%
1956	93	3.9%	14	2.0%	51	3.6%	31	5.6%	1	1.7%	190	3.7%
1957	94	3.7%	37	5.3%	58	4.4%	24	4.2%	1	1.8%	214	4.1%
1958	64	3.0%	27	4.3%	36	3.0%	22	4.7%	4	6.4%	153	3.4%

†First identified through death certificates. Percentages in this table based on all new pulmonary cases reported.

Note: Number of persons first reported at time of death in 1958 (153) comprise 20 percent of 772 pulmonary tuberculosis deaths recorded during the year.

NEW CASES OF ACTIVE TUBERCULOSIS BY RACE
Health Center Districts, New York City, 1958

Health Center DISTRICT	White	Negro	Puerto Rican	Other	Not Stated	All Races	
						Number	Rate†
Central Harlem	27	554	14	1	15	611	255
East Harlem	91	64	78	1	8	242	132
Kips Bay-Yorkville	87	3	0	1	4	95	42
Lower East Side	442	80	144	31	37	734	249
Lower West Side	339	52	32	35	19	477	157
Riverside	134	86	58	6	7	291	110
Washington Heights	80	55	8	2	7	152	54
MANHATTAN:	1,200	894	334	77	97	2,602	145
Ford'm-Riverdale	56	3	1	1	3	64	27
Morrisania	80	77	54	1	5	217	80
Mott Haven	106	43	46	1	7	203	93
Pelham Bay	27	8	1	0	6	42	24
Tremont	81	13	24	1	11	130	48
Westchester	72	11	8	1	3	95	37
BROOK:	422	155	134	5	35	751	53
Bay Ridge	66	2	1	0	1	70	23
Bedford	45	292	9	0	3	349	122
Brownsville	65	59	22	0	7	153	56
Bushwick	82	34	17	1	4	138	65
Flatbush	90	6	0	2	2	100	21
Fort Greene	78	118	30	1	4	231	105
Gravesend	55	9	1	0	0	65	23
Red Hook-Gowanus	71	17	40	2	3	133	80
Sunset Park	81	1	5	0	1	88	45
Wmsbrg.-Greenpoint	96	18	58	2	0	174	90
BROOKLYN:	729	556	183	8	25	1,501	58
Astoria-L.I.City	80	10	3	4	7	104	40
Corona	59	23	1	0	1	84	41
Flushing	80	10	1	3	3	97	22
Jamaica East	59	56	0	1	3	119	42
Jamaica West	69	27	0	0	3	99	33
Maspeth-Forest Hills	49	0	0	0	7	56	20
QUEENS:	396	126	5	8	24	559	32
RICHMOND:	55	7	2	0	5	69	33
NEW YORK CITY:	2,802	1,738	658	98	186	5,482	70

†Per 100,000 population.

Based on reports, Bureau of Records and Statistics, Department of Health, City of New York. Compiled by New York Tuberculosis and Health Association.

NEW CASES, TUBERCULOSIS ALL FORMS, BY RACE AND SEX, NEW YORK CITY, SINCE 1943

Year	White		Negro		Puerto Rican		Yellow		Not Stated	All Races						
	Male	Fem.	Male	Fem.	Male	Fem.	Male	Fem.		Male	Fem.	Total				
1943	3975	1705	5698	840	644	1490	101	89	191	173	4	181	1390	5986	2853	8950
1944	3426	1578	5015	814	710	1525	98	98	195	170	9	179	1058	5149	2733	7973
1945	2906	1489	4416	766	756	1522	123	131	254	112	9	124	746	4322	2651	7062
1946	3015	1522	4538	817	796	1613	124	167	291	102	7	109	572	4411	2699	7123
1947	3204	1638	4842	906	789	1695	191	240	431	111	12	123	508	4710	2889	7599
1948	3383	1689	5072	1044	915	1959	216	289	505	125	14	139	631	5179	3127	8306
1949	3296	1690	4986	1193	997	2190	236	314	550	102	19	121	720	5307	3260	8567
1950	3212	1434	4646	1017	917	1934	244	330	574	112	20	132	431	4854	2863	7717
1951	3056	1412	4468	1154	902	2056	280	356	636	116	19	135	288	4788	2795	7583
1952	2769	1317	4086	1118	934	2052	330	388	718	104	17	121	305	4527	2755	7282
1953	2802	1291	4093	1224	943	2167	346	379	725	120	15	135	229	4626	2723	7349
1954	2516	1056	3572	1100	833	1933	386	397	783	77	15	92	202	4210	2372	6582
1955	2393	954	3347	1028	834	1862	361	380	741	84	9	93	171	3971	2243	6214
1956	2321	841	3162	1071	790	1861	329	394	723	86	11	97	294	3985	2152	6137
1957	2381	877	3258	995	768	1763	393	379	772	75	10	85	239	4002	2115	6117
1958	2003	799	2802	1083	655	1738	337	321	658	71	10	81	203	3637	1845	5482

†Race or sex not stated. Note: Totals include other races and cases whose race or sex was not reported.

Compiled from reports of Bureau of Records and Statistics, Department of Health, City of New York, by New York Tuberculosis and Health Association.

NEW CASES OF TUBERCULOSIS, BY AGE AND SEX, NEW YORK CITY, 1951-1958

Part B - Negro, Puerto Rican

Age	0-4	5	10-	15-	20-	25-	30-	35-	45-	55-	65+	Un-known	All Ages
NEGRO MALE													
1951	86	30	19	60	107	147	145	233	163	96	58	10	1154
1952	96	41	22	52	67	117	150	221	205	89	41	17	1118
1953	82	43	28	33	72	135	140	288	230	94	69	10	1224
1954	80	30	17	40	74	120	127	238	216	91	56	11	1100
1955	84	31	16	33	61	100	114	258	165	103	52	11	1028
1956	60	38	14	30	46	86	138	285	207	108	50	9	1071
1957	57	41	16	25	47	83	123	230	190	111	62	10	995
1958	99	56	23	24	66	72	140	268	162	116	53	4	1083
NEGRO FEMALE													
1951	73	39	30	69	157	155	119	134	69	26	25	6	902
1952	67	25	35	81	155	166	130	137	69	33	23	13	934
1953	77	42	23	72	145	184	113	147	82	28	22	8	943
1954	72	44	29	41	93	153	122	149	82	27	16	5	833
1955	99	36	27	59	76	117	135	158	62	38	24	3	834
1956	62	36	22	52	89	126	116	139	70	38	34	6	790
1957	68	50	13	63	79	93	110	173	66	32	18	3	768
1958	60	35	31	45	67	86	95	123	57	24	27	5	655
NEGRO BOTH SEXES													
1951	159	69	49	129	264	302	264	367	232	122	83	16	2056
1952	163	66	57	133	222	283	280	358	274	122	64	30	2052
1953	159	85	51	105	217	319	253	435	312	122	91	18	2167
1954	152	74	46	81	167	273	249	387	298	118	72	16	1933
1955	183	67	43	92	137	217	249	416	227	141	76	14	1862
1956	122	74	36	82	135	212	254	424	277	146	84	15	1861
1957	125	91	29	88	126	176	233	403	256	143	80	13	1763
1958	159	91	54	69	133	158	235	391	219	140	80	9	1738
PUERTO RICAN MALE													
1951	39	14	6	18	59	37	37	36	16	7	8	3	280
1952	45	27	6	35	55	48	27	47	27	8	3	2	330
1953	49	31	9	21	63	43	35	49	25	10	7	4	346
1954	53	27	10	24	55	49	49	55	28	21	11	4	386
1955	68	23	12	23	56	46	34	44	19	20	10	6	361
1956	63	29	10	11	39	45	34	43	31	16	7	1	329
1957	39	32	6	30	62	47	35	60	40	20	18	4	393
1958	49	19	13	23	57	36	31	48	24	23	11	3	337
PUERTO RICAN FEMALE													
1951	29	25	14	29	70	77	35	41	21	11	1	3	356
1952	31	22	8	27	71	82	44	50	25	14	5	9	388
1953	42	35	15	33	58	69	32	50	18	14	7	6	379
1954	62	27	18	35	66	78	40	37	15	10	4	5	397
1955	44	17	15	27	73	61	38	47	27	17	9	5	380
1956	60	25	13	36	46	67	59	44	21	14	5	4	394
1957	54	25	14	37	53	44	43	40	27	19	19	4	379
1958	43	21	10	30	49	37	36	40	26	14	11	4	321
PUERTO RICAN BOTH SEXES													
1951	68	39	20	47	129	114	72	77	37	18	9	6	636
1952	76	49	14	62	126	130	71	97	52	22	8	11	718
1953	91	66	24	54	121	112	67	99	43	24	14	10	725
1954	115	54	28	59	121	127	89	92	43	31	15	9	783
1955	112	40	27	50	129	107	72	91	46	37	19	11	741
1956	123	54	23	47	85	112	93	87	52	30	12	5	723
1957	93	57	20	67	115	91	78	100	67	39	37	8	772
1958	92	40	23	53	106	73	67	88	50	37	22	7	658

NEW CASES OF TUBERCULOSIS, BY AGE AND SEX, NEW YORK CITY, 1951-1958

Part C - Yellow

Age	0-4	5-	10-	15-	20-	25-	30-	35-	45-	55-	65+	Un-known	All Ages
YELLOW MALE													
1951	1	0	0	1	10	3	3	17	36	30	13	2	116
1952	0	0	0	5	7	8	10	14	20	18	18	4	104
1953	1	0	0	8	6	8	5	14	28	30	16	4	120
1954	0	3	0	3	2	4	8	7	19	17	13	1	77
1955	2	1	0	3	4	6	9	12	16	19	10	2	84
1956	3	1	0	3	6	7	7	8	19	18	13	1	86
1957	0	0	0	3	0	5	5	13	8	21	18	2	75
1958	1	0	0	1	3	5	2	7	12	16	20	4	71
YELLOW FEMALE													
1951	1	1	0	2	3	5	4	1	1	0	0	1	19
1952	0	0	0	1	2	7	4	0	1	1	0	1	17
1953	0	0	1	0	2	9	0	2	0	0	0	1	15
1954	2	0	1	1	1	3	1	4	0	1	0	1	15
1955	0	1	0	2	0	4	1	0	0	0	0	1	9
1956	1	3	0	0	0	1	2	3	0	1	0	0	11
1957	1	0	0	2	3	3	0	0	0	0	1	0	10
1958	0	0	0	0	3	2	2	2	1	0	0	0	10
YELLOW BOTH SEXES													
1951	2	1	0	3	13	8	7	18	37	30	13	3	135
1952	0	0	0	6	9	15	14	14	21	19	18	5	121
1953	1	0	1	8	8	17	5	16	28	30	16	5	135
1954	2	3	1	4	3	7	9	11	19	18	13	2	92
1955	2	2	0	5	4	10	10	12	16	19	10	3	93
1956	4	4	0	3	6	8	9	11	19	19	13	1	97
1957	1	0	0	5	3	8	5	13	8	21	19	2	85
1958	1	0	0	1	6	7	4	9	13	16	20	4	81

Note: All other races and those whose race was not known are included in totals for All Races.

NEWLY REPORTED CASES OF TUBERCULOSIS, NEW YORK CITY, 1954-1958
By Race and Health Center Districts

Health Center District	White					Negro					Puerto Rican				
	1954	1955	1956	1957	1958	1954	1955	1956	1957	1958	1954	1955	1956	1957	1958
Central Harlem	29	37	26	27	27	740	624	594	589	554	18	10	14	14	18
East Harlem	138	111	82	92	91	89	77	56	66	64	137	114	104	111	78
Kips Bay-Yorkville	147	110	89	101	87	2	4	2	3	3	4	3	7	3	
Lower East Side	598	487	578	601	442	61	58	68	76	80	108	106	94	177	
Lower West Side	449	423	364	429	339	47	50	37	37	52	62	61	44	59	
Riverside	197	173	146	139	134	61	69	71	73	86	98	87	72	60	
Washington Hgts.	99	106	93	82	80	120	88	114	72	55	14	21	23	17	
MANHATTAN:	1657	1447	1378	1471	1200	1120	970	942	916	894	441	402	358	445	
Ford'm-Riverdale	49	72	39	72	56	0	5	0	6	3	1	1	1	3	
Morrisania	62	88	68	90	80	72	79	85	100	77	42	53	70	40	
Mott Haven	116	123	156	111	106	42	57	55	43	43	116	109	74	71	
Pelham Bay	55	40	32	32	27	4	6	6	5	8	1	0	2	1	
Tremont	85	96	88	75	81	29	33	24	19	13	14	15	10	9	
Westchester	63	52	53	59	72	15	8	10	10	11	0	4	7	7	
BRONX:	430	471	436	439	422	162	188	180	183	155	174	182	164	131	
Bay Ridge	91	69	75	76	66	1	1	1	0	2	2	2	0	0	
Bedford	54	71	65	56	45	263	283	318	236	292	5	11	12	11	
Brownsville	84	74	85	90	65	50	57	45	53	59	6	15	14	22	
Bushwick	98	115	84	81	82	25	21	25	30	34	13	10	9	8	
Flatbush	108	102	76	101	90	6	7	6	8	6	1	0	1	0	
Fort Greene	98	80	76	73	78	146	142	147	139	118	32	37	41	29	
Gravesend	50	57	60	57	55	5	6	8	7	9	1	0	2	1	
Red Hook-Gowanus	99	112	88	83	71	19	19	27	18	17	65	51	67	67	
Sunset Park	95	123	111	121	81	0	1	1	0	1	5	3	0	1	
Vasbrg.-Greenv't	103	98	109	109	96	23	17	21	25	18	35	23	51	49	
BROOKLYN:	880	901	829	847	729	538	554	599	516	556	165	152	197	188	
Astoria-L.I. City	93	100	114	98	80	5	10	9	7	10	1	0	2	6	
Corona	63	59	58	63	59	19	26	16	19	23	0	1	0	0	
Flushing	110	82	68	76	80	8	16	6	7	10	0	0	0	1	
Jamaica East	78	64	60	75	59	52	78	83	91	56	0	0	1	1	
Jamaica West	114	63	90	74	69	22	15	13	17	27	2	1	1	0	
Maspeth-For. Hills	74	72	76	64	49	1	0	2	0	0	0	1	0	0	
QUEENS:	532	440	466	450	396	107	145	129	141	126	3	3	3	8	
RICHMOND:	73	88	53	51	55	6	5	11	7	7	0	2	1	0	
NEW YORK CITY:	3572	3347	3162	3258	2802	1933	1862	1861	1763	1738	783	741	723	772	

TUBERCULOSIS REGISTER, NEW YORK CITY, 1946-1958

Year	Cases in Register Jan. 1	New Cases during Year	Old Cases Re-summed	Total Cases during Year	Cases Removed during Year	Remaining in Register Dec. 31
1946	17,614	7,123	1,441	26,178	8,727	17,451
1947	17,451	7,599	1,560	26,610	8,821	17,789
1948	17,789	8,306	1,874	27,969	9,449	18,520
1949	18,520	8,567	2,081	29,168	9,092	20,076
1950	20,076	7,717	2,224	30,017	10,958	19,059
1951	19,059	7,583	1,893	28,535	9,547	18,988
1952	18,988	7,282	1,870	28,140	9,854	18,286
1953	18,286	7,349	2,171	27,806	9,545	18,261
1954	18,261	6,582	2,088	26,931	10,949	15,982
1955†	15,982	6,214	2,025	24,221	10,379	13,842
1956	13,842	6,137	1,798	21,777	9,045	12,732
1957	12,732	6,117	1,867	20,716	9,352	11,364
1958	11,364	5,482	1,901	18,747	8,594	10,153

†"Physical inventory" of register completed in 1955.
Based on reports by courtesy of the Bureau of Tuberculosis,
Department of Health, City of New York.

According to race the white residents (5,601) comprised 55 percent of the total, Negroes (3,054) 30 percent, Puerto Ricans (1,081) 11 percent, yellow and other races (185) 2 percent.

Two-thirds of all active cases were in males (males = 7,164, females = 2,989). However, in the age group 0-30 the females outnumber the males slightly. It is mainly in the group 30 years and over where the men outnumber the women. Forty-three percent (4,330) of all the cases registered were white males, the majority of them (3,291) in the age group 45 years or older.

TUBERCULOSIS REGISTER ACCORDING TO RACE
New York City, December 31, 1958

Health Center DISTRICT	White	Negro	Puerto Rican	Yellow & Other	Not Stated	All Races
Central Harlem	47	1,096	27	3	31	1,204
East Harlem	151	104	134	4	5	398
Kips Bay-Yorkville	167	1	3	3	7	181
Lower East Side	989	113	181	65	50	1,398
Lower West Side	737	78	65	60	17	957
Riverside	227	165	98	13	13	516
Washington Heights	114	109	15	4	8	250
MANHATTAN:	2,432	1,666	523	152	131	4,904
Ford'm-Riverdale	81	3	3	1	3	91
Morrisania	160	160	92	2	6	420
Mott Haven	208	76	100	3	19	406
Pelham Bay	52	9	5	0	4	70
Tremont	142	24	26	1	7	200
Westchester	110	13	9	1	3	136
BRONX:	753	285	235	8	42	1,323
Bay Ridge	121	3	1	0	0	125
Bedford	61	400	13	0	6	480
Brownsville	105	94	42	0	5	246
Bushwick	162	57	28	3	7	257
Flatbush	149	5	0	1	0	155
Fort Greene	133	199	49	2	6	389
Gravesend	79	11	4	0	0	94
Red Hook-Gowanus	197	50	90	4	2	343
Sunset Park	173	1	6	2	0	182
Wmsbrg.-Greenpoint	177	30	77	4	0	288
BROOKLYN:	1,357	850	310	16	26	2,559
Astoria-L.I. City	217	23	7	5	11	263
Corona	129	44	1	1	1	176
Flushing	172	18	0	3	4	197
Jamaica East	130	114	2	0	2	248
Jamaica West	183	39	2	0	3	227
Maspeth-Forest Hills	125	1	0	0	9	135
QUEENS:	956	239	12	9	30	1,246
RICHMOND:	103	14	1	0	3	121
NEW YORK CITY:	5,601	3,054	1,081	185	232	10,153

Based on reports by courtesy of the Bureau of Records and Statistics, Department of Health, City of New York. Compiled by New York Tuberculosis and Health Association.

ACTIVE CASES IN TUBERCULOSIS REGISTER ON LAST DAY OF YEAR,
BY AGE AND SEX, WHITE, NEGRO, PUERTO RICAN

Department of Health, City of New York, 1954-1958

Race Age	Male					Female					Both Sexes				
	1954	1955	1956	1957	1958	1954	1955	1956	1957	1958	1954	1955	1956	1957	1958
WHITE															
0-4	66	81	88	63	48	46	60	64	56	52	112	141	152	119	100
5-9	38	36	33	27	25	39	33	30	17	22	77	69	63	44	47
10-14	22	24	20	13	9	34	38	13	20	13	56	62	82	33	22
15-19	59	96	41	36	32	83	99	60	45	26	142	195	101	81	58
20-24	215	207	128	88	82	222	178	116	93	80	437	385	244	181	162
25-29	300	234	190	135	135	316	228	183	137	84	616	462	373	272	219
30-34	386	315	217	192	170	326	233	183	130	127	712	548	400	322	297
35-44	942	911	680	579	500	648	446	380	296	247	1590	1357	1060	875	747
45-54	1808	1687	1423	1271	1104	383	304	295	274	262	2191	1991	1718	1545	1366
55-64	1723	1475	1460	1362	1259	244	193	178	180	144	1967	1668	1638	1542	1403
65+	1084	800	1017	1043	928	244	207	200	199	195	1328	1007	1217	1242	1123
Total	6704	5898	5313	4839	4330	2617	2040	1710	1465	1271	9321	7938	7023	6304	5601
NEGRO															
0-4	118	121	95	75	108	87	118	93	89	82	205	239	188	164	190
5-9	76	71	79	79	88	85	69	87	72	51	161	140	166	151	139
10-14	29	40	25	26	30	48	70	37	29	33	77	110	62	55	63
15-19	56	82	51	43	28	96	113	71	75	58	152	195	122	118	86
20-24	125	134	82	65	83	197	220	161	107	88	322	354	243	172	171
25-29	251	255	191	143	109	344	304	227	172	140	595	559	418	315	249
30-34	301	295	271	243	225	317	292	275	221	168	618	587	546	464	393
35-44	671	584	634	535	508	410	320	360	347	286	1081	904	994	882	794
45-54	547	473	534	442	395	195	125	166	145	128	742	598	700	587	523
55-64	251	204	261	249	237	57	50	64	56	44	308	254	325	305	281
65+	129	86	125	132	116	43	31	38	42	34	172	117	163	174	150
Total	2572	2339	2360	2042	1936	1888	1714	1583	1360	1118	4460	4053	3943	3402	3054
PUERTO RICAN															
0-4	75	93	95	63	55	71	70	86	78	64	146	163	181	141	119
5-9	48	35	51	50	29	37	36	39	37	43	85	71	90	87	72
10-14	14	22	13	11	12	26	32	19	23	16	40	54	67	34	28
15-19	34	53	19	22	27	53	66	41	45	34	87	119	60	67	61
20-24	107	101	76	79	71	118	130	86	61	60	225	231	162	140	131
25-29	109	94	92	82	54	174	130	114	83	66	283	224	206	165	120
30-34	109	83	78	70	66	109	77	99	77	74	218	160	177	147	140
35-44	128	100	104	112	114	140	99	101	87	79	268	199	205	199	193
45-54	72	50	69	84	63	49	45	47	49	46	121	95	116	133	109
55-64	39	31	33	36	36	25	30	27	31	22	64	61	60	67	58
65+	21	14	16	20	25	15	10	12	21	17	36	24	28	41	42
Total	761	679	649	634	555	820	729	672	597	526	1581	1408	1321	1231	1081

Note: Totals include persons whose age was not stated.

Active Cases in
TUBERCULOSIS REGISTER ACCORDING TO RACE AND SEX
on December 31, 1952-1958

Sex Year	White	Negro	Puerto Rican	Yellow	Other	Not Stated	Total
MALE							
1952	7,730	2,544	710	249	21	375	11,629
1953	7,691	2,672	754	263	28	308	11,716
1954	6,704	2,572	761	223	26	216	10,502
1955	5,898	2,339	679	204	29	125	9,274
1956	5,313	2,360	649	173	27	135	8,657
1957	4,839	2,042	634	146	23	161	7,845
1958	4,330	1,936	555	147	21	175	7,164
FEMALE							
1952	3,594	1,985	860	35	7	176	6,657
1953	3,400	2,032	902	42	8	161	6,545
1954	2,617	1,888	820	33	9	113	5,480
1955	2,040	1,714	729	21	7	57	4,568
1956	1,710	1,583	672	17	10	83	4,075
1957	1,465	1,360	597	10	10	77	3,519
1958	1,271	1,118	526	10	7	57	2,989
BOTH SEXES							
1952	11,324	4,529	1,570	284	28	551	18,286
1953	11,091	4,704	1,656	305	36	469	18,261
1954	9,321	4,460	1,581	256	35	329	15,982
1955	7,938	4,053	1,408	225	36	182	13,842
1956	7,023	3,943	1,321	190	37	218	12,732
1957	6,304	3,402	1,231	156	33	238	11,364
1958	5,601	3,054	1,081	157	28	232	10,153

POSITIVE BACTERIOLOGICAL FINDINGS* REPORTED DURING YEAR
Cases of Active Tuberculosis in Register
December 31, 1958

Type of Care	Total Cases in Register Dec. 31, 1958	Reported Positive† during Year	
		Number	Percent
Private physicians	690	169	24%
Hospitals in city	4,378	867	20%
Sanatoria, out of town	744	128	17%
Out of town, not in institution	28	7	25%
Health Department clinics	2,123	580	27%
Other clinics	931	98	11%
No medical or clinical care	203	12	6%
Pending, care not confirmed	1,037	151	15%
Home care	19	3	16%
Total	10,153	2,015	20%

*Acid fast bacilli demonstrated in sputum.

†Positive bacteriological findings reported January-December 1958.

ACTIVE CASES IN TUBERCULOSIS REGISTER, BY RACE, HEALTH CENTER DISTRICTS, NEW YORK CITY
On Last Day of Year, 1955-1958

Health Center DISTRICT	White				Negro				Puerto Rican				Other Races				All Races(†)			
	1955	1956	1957	1958	1955	1956	1957	1958	1955	1956	1957	1958	1955	1956	1957	1958	1955	1956	1957	1958
Central Harlem ...	77	68	67	47	1636	1583	1346	1096	44	43	40	27	9	4	4	3	1785	1758	1505	1204
East Harlem	197	173	159	151	135	108	104	104	199	179	166	134	4	4	5	4	540	468	437	398
Kips Bay-Yorkville	227	207	188	167	4	2	3	1	7	5	6	3	3	1	2	3	243	216	207	181
Lower East Side ..	1109	1155	1112	989	138	141	128	113	190	171	226	181	79	78	65	65	1539	1561	1567	1398
Lower West Side ..	980	836	788	737	96	72	66	78	116	94	78	65	93	74	60	60	1300	1086	1000	957
Riverside	370	333	277	227	150	160	158	165	151	136	107	98	21	15	11	13	716	657	567	516
Washington Hgts. .	192	143	127	114	186	189	128	109	31	33	22	15	4	5	3	4	424	373	286	250
MANHATTAN:	3452	2915	2718	2432	2345	2255	1933	1666	738	661	645	523	213	181	151	152	6547	6119	5569	4904
Ford'm-Riverdale .	152	101	96	81	7	3	4	3	3	1	4	3	2	0	0	1	165	108	109	91
Morrisania	240	204	162	160	213	196	167	160	116	119	101	92	6	4	4	2	578	527	442	420
Mott Haven	278	274	248	208	104	97	88	76	207	176	130	100	1	8	5	3	601	582	493	406
Pelham Bay	110	93	55	52	17	13	9	9	1	3	4	5	0	0	0	0	132	109	73	70
Tremont	196	172	149	142	48	36	29	24	27	24	23	26	0	1	1	1	273	239	210	200
Westchester	163	140	116	110	29	20	13	13	11	13	9	9	0	0	0	1	204	176	145	136
BRONX:	1139	984	826	753	418	365	310	285	365	336	271	235	9	13	11	8	1953	1741	1472	1323
Bay Ridge	196	158	147	121	2	1	1	3	1	1	1	1	1	0	0	0	201	160	149	125
Bedford	109	95	74	61	448	482	391	400	11	12	11	13	2	2	2	0	572	604	483	480
Brownsville	154	152	142	105	112	104	92	94	29	36	34	42	2	1	2	0	297	298	276	246
Bushwick	245	217	196	162	50	56	73	57	23	22	19	28	2	3	3	3	325	308	304	257
Flushing	245	189	172	149	12	12	8	5	1	1	1	0	0	0	0	1	261	202	181	155
Fort Greene	204	163	116	133	257	240	211	199	68	56	43	49	4	4	5	2	539	474	379	389
Gravesend	149	131	97	79	11	14	18	11	3	5	4	4	0	0	0	2	164	153	120	94
Red Hook-Gowanus .	278	223	216	197	48	62	48	50	101	107	101	90	7	6	4	4	439	401	372	343
Sunset Park	271	227	227	173	1	1	0	1	12	9	5	6	2	1	2	2	288	238	235	162
Washbg.-Greemp't .	193	184	180	177	28	35	37	30	38	61	85	77	2	2	2	4	262	284	305	288
BROOKLYN:	2044	1739	1567	1357	969	1007	879	850	287	310	304	310	22	22	21	16	3348	3122	2804	2559
Astoria-L.I. City .	352	325	255	217	25	27	18	23	7	9	7	7	1	2	3	5	393	369	289	263
Corona	167	153	144	129	57	46	46	44	2	0	0	1	1	3	3	1	233	203	196	176
Flushing	234	204	210	172	23	22	18	18	1	0	0	0	0	0	0	0	262	226	229	197
Jamaica East	203	181	145	130	168	170	143	114	1	1	2	2	3	3	3	3	383	360	296	248
Jamaica West	295	255	199	183	33	37	40	39	5	3	2	2	1	0	0	0	336	298	244	227
Maspeth-For.Hills .	198	155	142	125	1	3	2	1	0	0	0	0	3	2	0	0	211	167	153	135
QUEENS:	1449	1273	1095	956	307	305	267	239	16	13	11	12	9	9	6	9	1818	1623	1407	1246
RICHMOND:	154	112	98	103	14	11	13	14	2	1	0	1	5	2	0	0	176	127	112	121
NEW YORK CITY: ...	7938	7023	6304	5601	4053	3943	3402	3054	1408	1321	1231	1081	261	227	189	185	13842	12732	11364	10153

(†) Including persons whose race was not stated. Compiled from reports of Dept. of Health, N.Y.C., by N.Y.T.B. & H. Assn.