

# East Side Coastal Resiliency Construction Update

CB6 Land Use Committee Meeting

Virtual Meeting

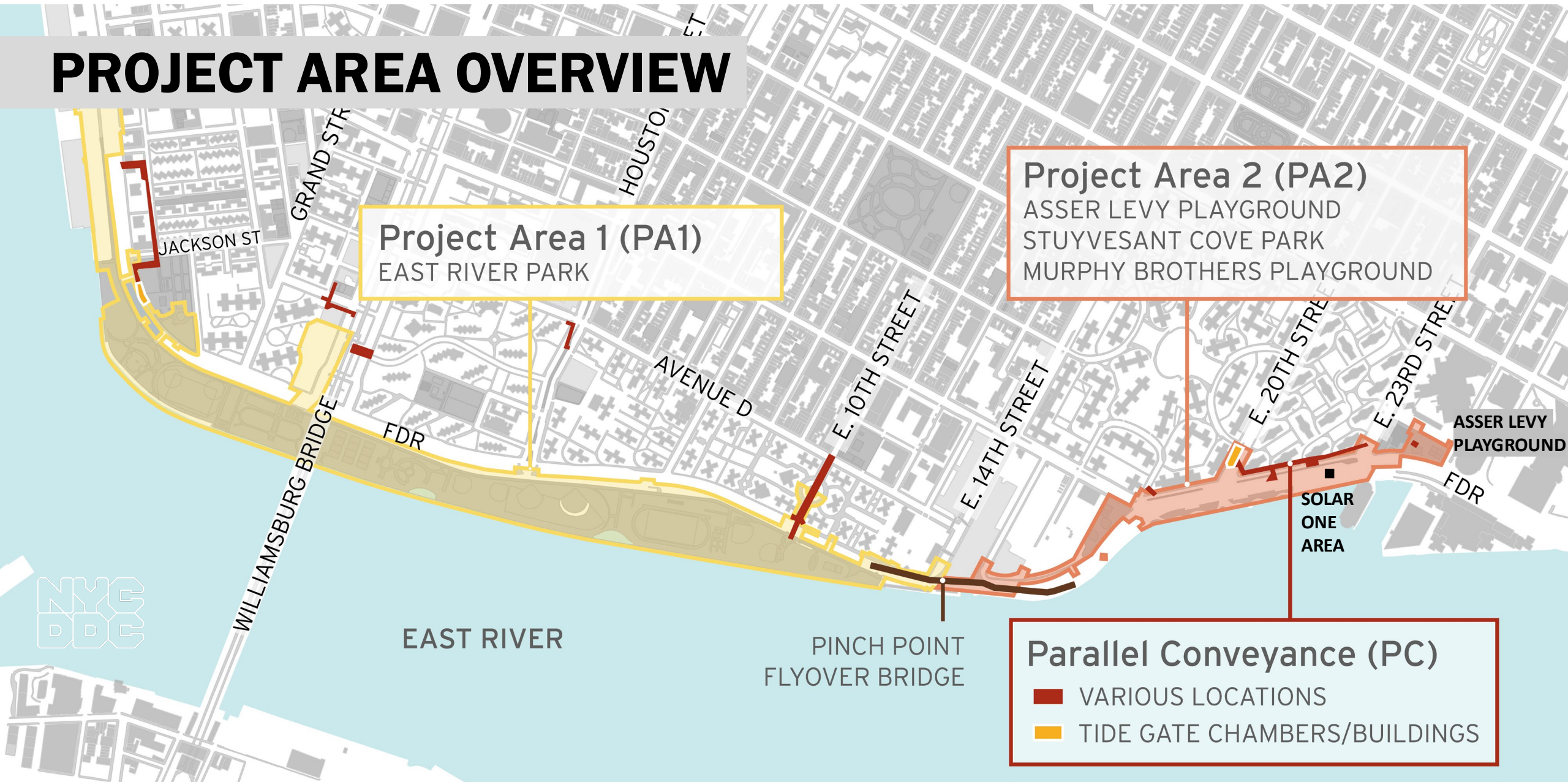
November 22, 2021



# HIGHLIGHTS

- Overview of Project & Contracts
- Project Area 2 Construction Progress & Photos
- MWBE Opportunities
- What We've Heard

# PROJECT AREA OVERVIEW



# OVERVIEW OF CONTRACTS

## Project Area 1 (PA1)

- Notice to Proceed (NTP) issued to contractor August 16, 2021
- Tennis courts and ball fields permitted with Parks through November
- Passive Lawn installation complete
- TRO as of November 4

## Project Area 2 (PA2)

- In construction on phase 2
  - Asser Levy Playground, Stuyvesant Cove Park at 20<sup>th</sup> Street north to Solar One Area
  - Over 650 ft of floodwall installed

## Parallel Conveyance (PC)

- Bid advertised on 11/12



# PA2 | CONSTRUCTION PROGRESS

ALL WORK IS SUBJECT TO CHANGE

## 1. Stuyvesant Cove Park

- pile installation, floodwall construction
- site prep and removals

## 2. E 23<sup>rd</sup> St. Intersection:

- pile installation

## 3. West Service Road

- pile installation

## 4. Asser Levy Playground:

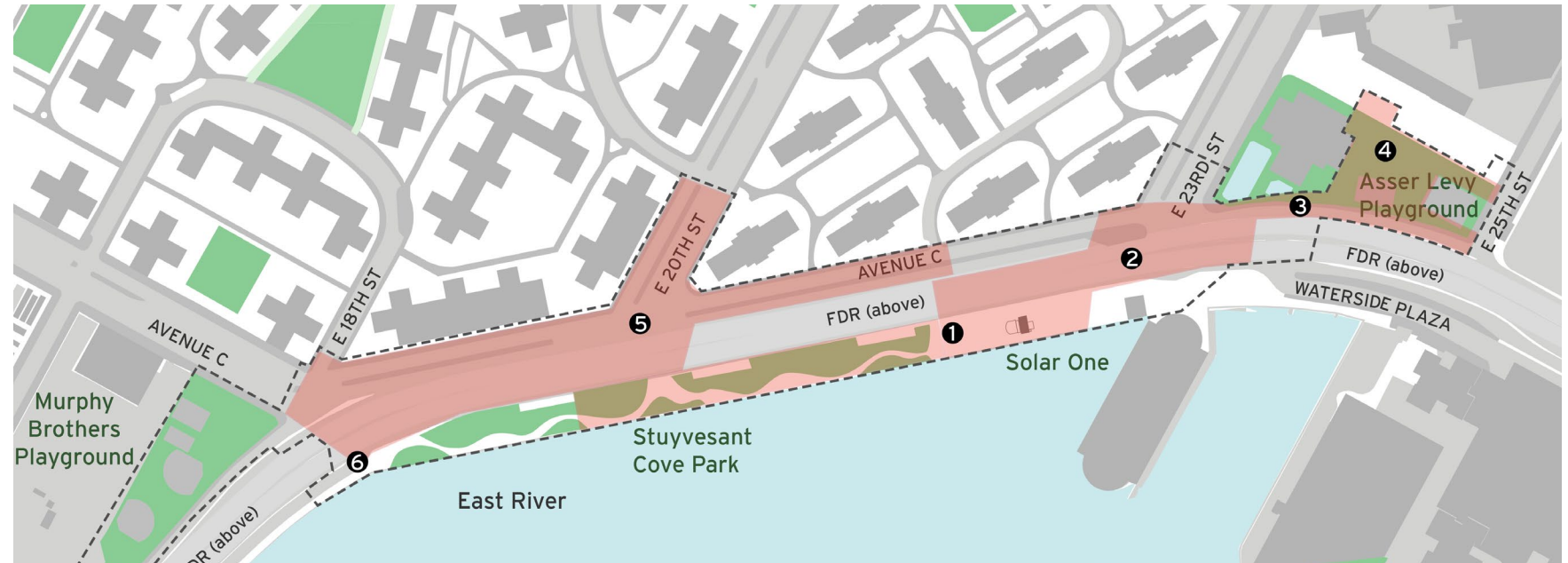
- pile installation, park restoration

## 5. Avenue C and E 20<sup>th</sup> Street:

- ConEd work

## 6. FDR Dr. NB exit 7 ramp:

- lane shift for sewer work



# PA2 | ACTIVE ADVISORIES

Community Advisory

EAST SIDE  
COASTAL  
RESILIENCY

Project # SANDRESM2 | Borough: Manhattan | Issue Date: 11/05/2021  
 The East Side Coastal Resiliency (ESCR) Project is an initiative to provide long-term flood protection on the east side of Manhattan.

## Stuyvesant Cove Park Closure at E. 20<sup>th</sup> Street Starting Monday, November 22, 2021

To facilitate the construction of the floodwall and flood gate, Stuyvesant Cove Park, at E. 20<sup>th</sup> Street, will be closed until Spring 2022. Access to E. 20<sup>th</sup> Street will be maintained via the Greenway.

Questions ¿Preguntas? 问题?  
 Contact your Community Construction Liaison (CCL):  
**Nadine Harris**  
 Phone: 347-572-3057  
 Email: [ESCRCL2@ddccr.com](mailto:ESCRCL2@ddccr.com)  
 Inquiry Tool | Consulta en Línea | 线上咨询: [www.nyc.gov/escr/contact](http://www.nyc.gov/escr/contact)

PLEASE NOTE: Due to unforeseen conditions (weather, field conditions, etc.) it may become necessary to change some scheduled work locations and operations.

Department of Design and Construction  
 Office of Community Outreach & Notification

Mayor's Office of Resiliency

NYC Parks

Department of Transportation

Department of Environmental Protection

Community Advisory

EAST SIDE  
COASTAL  
RESILIENCY

Project # SANDRESM2 | Borough: Manhattan | Issue Date: 11/05/2021  
 The East Side Coastal Resiliency (ESCR) Project is an initiative to provide long-term flood protection on the east side of Manhattan.

## Traffic Pattern Shifts North: East 23<sup>rd</sup> Street at East Service Road and under the FDR Drive Starting the week of November 22, 2021 Ongoing until further notice

Vehicles and pedestrians to follow all posted signs and instructions from Traffic Enforcement Agents and Flaggers while detour is in effect.

Questions ¿Preguntas? 问题?  
 Contact your Community Construction Liaison (CCL):  
**Nadine Harris**  
 Phone: 347-572-3057  
 Email: [ESCRCL2@ddccr.com](mailto:ESCRCL2@ddccr.com)  
 Inquiry Tool | Consulta en Línea | 线上咨询: [www.nyc.gov/escr/contact](http://www.nyc.gov/escr/contact)

PLEASE NOTE: Due to unforeseen conditions (weather, field conditions, etc.) it may become necessary to change some scheduled work locations and operations.

Department of Design and Construction  
 Office of Community Outreach & Notification

Mayor's Office of Resiliency

NYC Parks

Department of Transportation

Department of Environmental Protection

\*traffic pattern to shift week of 11/29/21





# PA2 | SITE PHOTOS STUYVESANT COVE PARK





# PA2 | SITE PHOTOS ASSER LEVY PLAYGROUND

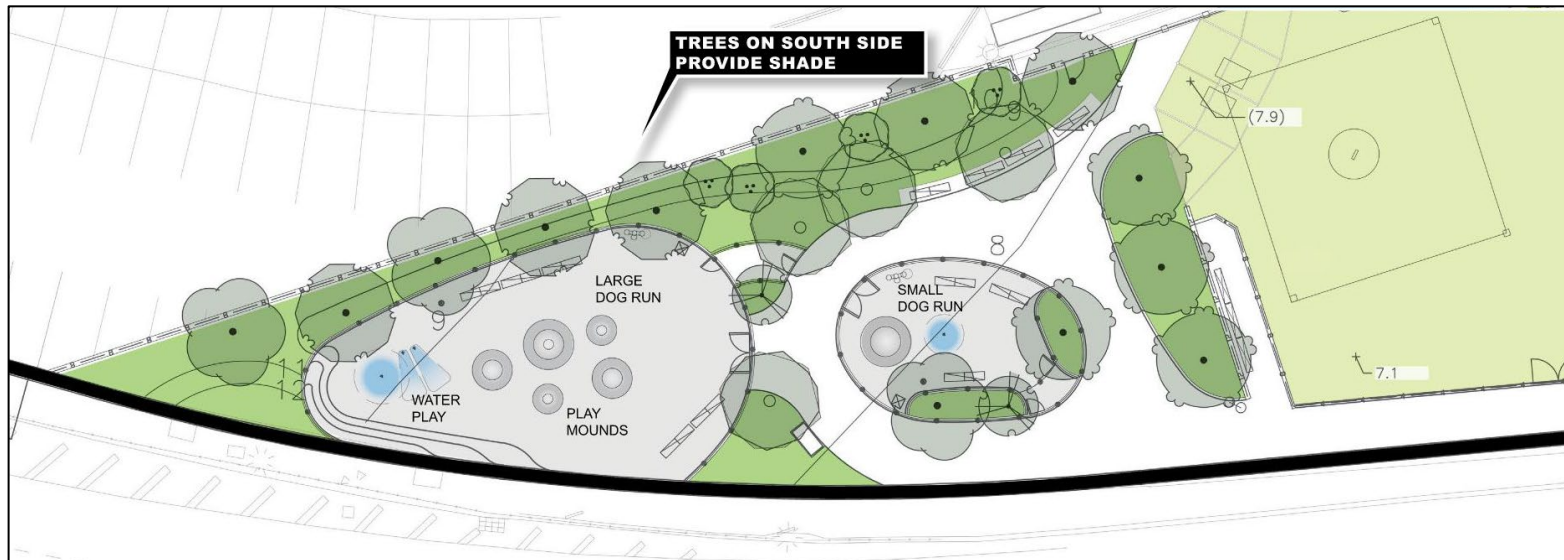




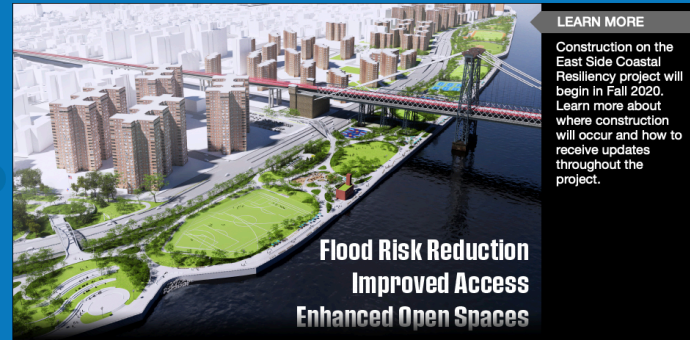


# WHAT WE'VE HEARD

- Envision Certification
- Coordination with Solar One and EDC
- Design updates: Murphy Brothers Dog Run, Comfort Station, Flyover Bridge



<https://www1.nyc.gov/assets/escr/downloads/pdf/DDC-f-ESCR-pres-rev-final-given-to-PDC-2020-01-30.pdf>




LEARN MORE  
Construction on the East Side Coastal Resiliency project will begin in Fall 2020. Learn more about where construction will occur and how to receive updates throughout the project.

Flood Risk Reduction  
Improved Access  
Enhanced Open Spaces

### East Side Coastal Resiliency

The East Side Coastal Resiliency (ESCR) Project is a coastal protection initiative, jointly funded by the City of New York and the federal government, aimed at reducing flood risk due to coastal storms and sea level rise on Manhattan's East Side from East 25th Street to Montgomery Street. The boundaries of this project correspond with the natural "pinch-points" in the 100-year floodplain: areas where the land is higher along the coastline, making it easier to close the system off from water entering from the north and south. The project design integrates flood protection into the community fabric, improving waterfront open spaces and access, rather than walling off the neighborhood. Construction on the East Side Coastal Resiliency project will begin in Fall 2020 and continue through 2025.

 <b>Construction Progress</b>	 <b>Resiliency &amp; Flood Protection</b>	 <b>Project Background &amp; Goals</b>	 <b>Project Design</b>
<b>Construction Notices</b> View our most recent community presentations for updates as we prepare for upcoming construction activities.	<b>Resiliency and Flood Protection</b> Learn more about ESCR's resiliency and the forward-thinking flood protection measures being implemented to protect 110,000 New Yorkers from the impacts of climate change.	<b>Project Background and Goals</b> Read about the history and background of ESCR, and the goals driving this technically complex infrastructure project.	<b>Project Design</b> From flood protection measures to bike lanes and ball fields, the ESCR project is improving open spaces and access in the Lower East Side while strengthening the city's coastline.

# NEED MORE INFORMATION?

## VISIT US AT:

[www.nyc.gov/escr](http://www.nyc.gov/escr)

