

East Side Coastal Resiliency Construction Update

CB6 Land Use Committee Meeting

Virtual Meeting

February 27, 2023

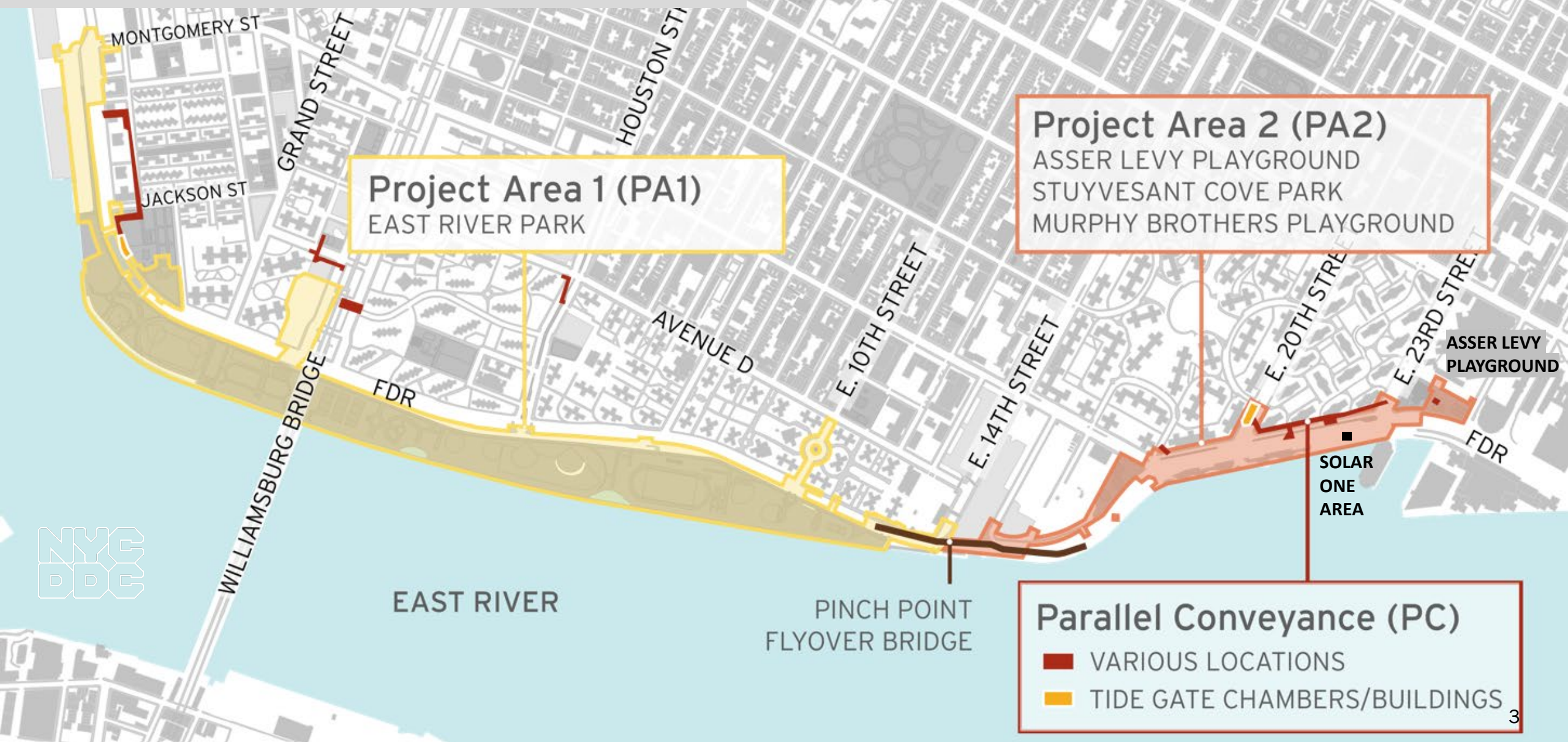


Mayor's Office of
Resiliency

Highlights

- ESCR Overview
- Community & Work With Us Updates
- Overview of Contracts
 - Project Area 2
 - Project Area 1

PROJECT AREA OVERVIEW



ESCR Overview



The East Side Coastal Resiliency (ESCR) project will protect 110,000 New Yorkers from the impacts of climate change by reducing flood risk to communities, properties, businesses, critical infrastructure, and public open spaces. In addition to providing flood protection, the project will strengthen and enhance waterfront spaces on Manhattan's East Side by improving accessibility, increasing ecological diversity, and delivering improved recreational amenities to a vibrant and highly diverse community.

www.nyc.gov/escr

ESCR Overview

Contractor: Perfetto Contracting Corporation (PCC)

Construction Start: Fall 2020

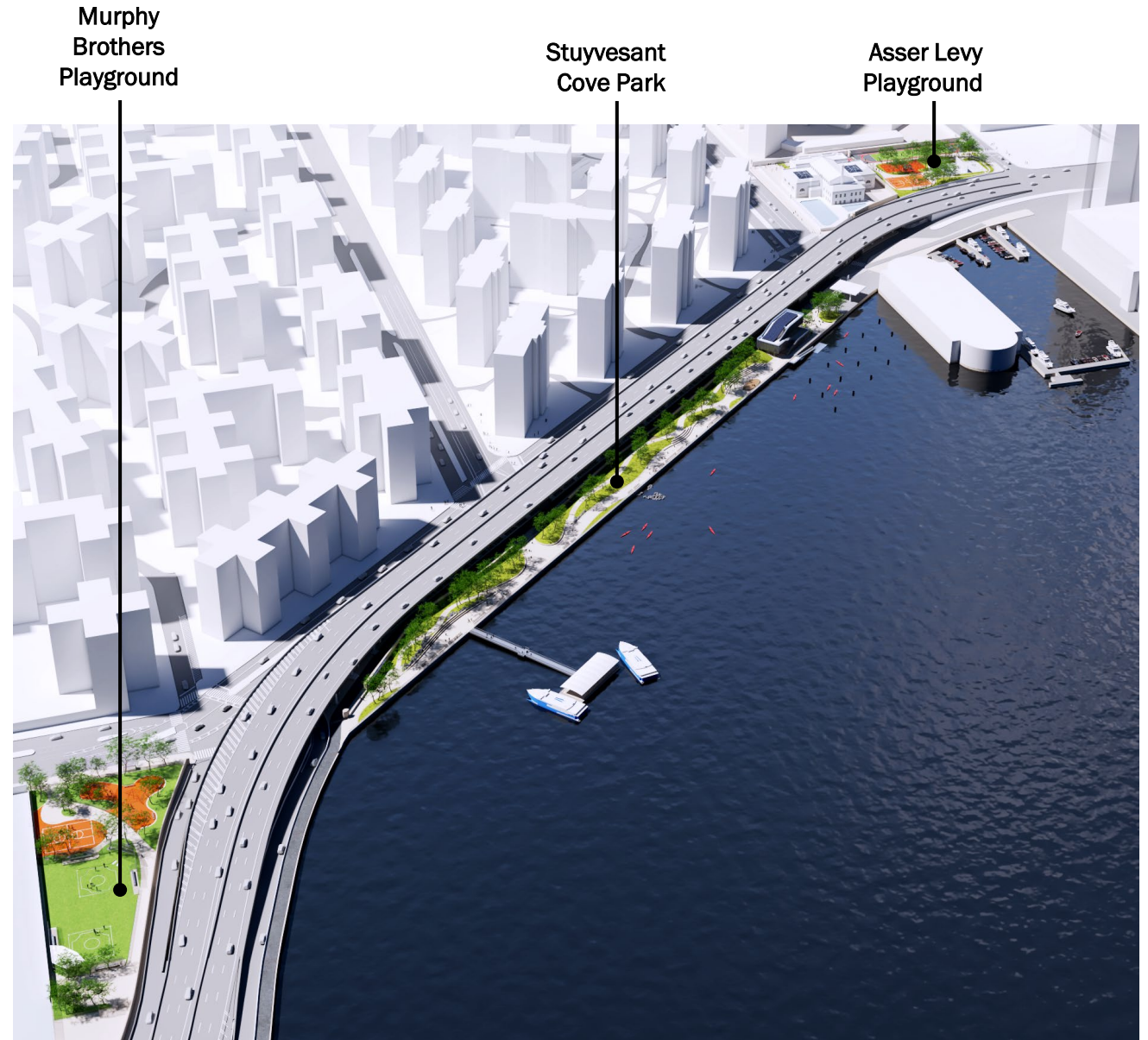
E 15th Street north to E 25th Street

- Asser Levy Playground (reopened 5/13/22)
- Stuyvesant Cove Park
- Murphy Brothers Playground

Scope of Work:

- Floodwall & Gates
- CSO & utility work
- Coordination with ConEd

Fact sheet: <https://www.nyc.gov/site/escr/about/about.page>



ESCR Overview

Contractor: IPC Resiliency Team

Construction Start: Fall 2021

E 15th Street south to Montgomery St.

- East River Park
- Corlears Hook, Delancey and 10th Street Bridges
- Houston Street Overpass
- Park Buildings

Scope of Work:

- Raise park 8-9 feet
- Floodwall & Gates
- Esplanade reconstruction
- CSO & utility work
- Coordination with ConEd

Fact sheet:

<https://www.nyc.gov/site/escr/about/about.page>



Community & Work With Us Updates

ESCR to YOUR School



December 2022 – NYC
DDC ACE Mentor Program



January 2023 – Learning Spring School



ESCR Newsletter

- ESCR newsletter 2022 Quarter 4
https://www.nyc.gov/assets/escr/downloads/pdf/ESCR-Newsletter_06.pdf

Spring/Summer Tabling

This year, the ESCR Community Engagement team actively held tabling events in the project's surrounding community:

- April 22, Seward Park – Earth Day Event

For More Information:

Visit the ESCR website, www.nyc.gov/escr, to sign up to receive weekly Construction Bulletins, Community Advisories, and other project communications, as well as to learn more about community meetings and events, ESCR background, design, and construction, and opportunities to work with us.
 Or Submit an Inquiry: www.nyc.gov/escr/contact

Questions? Preguntas? 问题?

Construction Liaisons (CCL) is/concerns you may have:

Información (Iame):

329-844-0407

ccl@ddocr.com

863 & ccl@gmail.com

	Closed
	Open
	Closed
	Open
	Open
	Closed
	Partial Open
	Closed
	Temporary Closed
	Open
Ill Court	Closed
	Closed
	Closed
	Open
	Closed
	Open
	Closed
	Open
	Open
Bridge	Open
	Open

Archaeology at Corlears Hook



Project Area 2

Asser Levy Playground/Stuyvesant Cove Park/Murphy Brothers Playground

The ESCR team made huge progress in PA2 construction in 2022. To date, over 1,400 linear feet of floodwall have been installed! Asser Levy Playground opened in May 2022, and Gates 14 & 18 were also installed. Did you know, Gate 18 is weighing 45 tons.



and sea-rail, December 2022

East River Park north of E. 20th to reopen in 2023, after filled, Murphy Brothers '16, 2022 to facilitate on. Work in this area will '24. Please visit the [PA2](#) es.

E. 20th Street has terminal access will remain ase review the revised at the [September 2022](#), visit the [PA2 Construction](#) es.



and sea-rail, December 2022

3 of 5



PA1 Construction, January 2023



FOR ILLUSTRATIVE PURPOSES SUBJECT TO MODIFICATIONS

2 of 5

ESCR NEWS



East Side Coastal Resiliency
www.nyc.gov/escr
 Fourth Quarter 2022

East Side Coastal Resiliency

The East Side Coastal Resiliency (ESCR) project is a coastal protection initiative, jointly funded by the City of New York and the federal government, aimed at reducing flood risk due to coastal storms and sea level rise. The ESCR project will protect 110,000 New Yorkers from the impacts of climate change by reducing flood risk to communities, properties, businesses, critical infrastructure, and public open spaces. In addition to providing flood protection, the project will strengthen and enhance waterfront spaces on Manhattan's East Side by improving accessibility, increasing ecological diversity, and delivering improved recreational amenities to a vibrant and highly diverse community. The ESCR project is among the largest and most technically complex infrastructure projects in New York City's history.

East Side Coastal Resiliency (ESCR) is creating a 2.4 mile flood protection system that consist of floodwalls and floodgates that are designed to blend into the fabric of the community by integrating with local streets, the elevated East River Park, and the new landscape surrounding Corlears Hook Park, Murphy Brothers Playground, Stuyvesant Cove Park, and Asser Levy Playground. The project also involves significant investments in underground interior drainage improvements that will increase the capacity of the sewer system.

ESCR Highlights

The end of 2022, marks the two-year anniversary for Project Area 2 (PA2) and one-year anniversary for Project Area 1 (PA1). The ESCR team would like to thank you for your understanding and patience as we continue to construct this important flood protection system. In this newsletter, we will summarize the ESCR construction activities and community events of 2022. We will also briefly introduce the next portion of the Lower Manhattan Coastal Resiliency (LMCR) flood protection system, the Brooklyn Bridge-Montgomery Street Coastal Resiliency (BMCR) project.

Project Area 1

East River Park and adjacent areas

Construction in East River Park continues

Work in Project Area 1 (PA1) is concentrated between Montgomery Street and E. 15th Street, largely focused on East River Park. East River Park will be closed in phases over the next several years, keeping a minimum of 42% open space for public access at all the times. The [PA1 Construction Approach](#) aims to provide full flood protection for the community as quickly as possible and maintain public and worker safety during construction. The most up to date [PA1 Construction Timeline](#) can be found at the ESCR website [Project Update page](#).

Currently East River Park from Montgomery Street north to Stanton Street including a small portion of Corlears Hook Park is closed for construction (see map on next page). East River Park north of Stanton Street is open and visitors can access open areas of the park at E. Houston Street, E. 6th Street and E. 10th Street pedestrian bridge. In early January, a temporary partial closure went into effect for East River Park



ESCR Work With Us

- Tuesday February 28, 2023
5:00 PM to 6:00 PM
Virtual Event
- **Learn from Workforce1 experts:**
 - Strategies to update your resume
 - Prepare and interview for success
 - increase your standout potential
 - tips to Secure New Opportunities!
- www.nyc.gov/escr/work to register

Have a Question on Hiring?

https://pima.ddccr.com/public/comment/project-comment-dynamic?project_id=14047&pe_id=2565



EAST SIDE COASTAL RESILIENCY

Work With Us
Virtual Quarterly Information Event
New Year, New Career
Tips to Secure New Opportunities

Presentation featuring: Workforce1
Workforce1 Career Centers help New Yorkers prepare for and connect to jobs across NYC's five boroughs.

Learn from the experts:

- Strategies to update your resume
- Prepare and interview for success
- Increase your standout potential

Submit your resume directly to receive complimentary review and feedback.

Tuesday
February 28, 2023
5:00 PM to 6:00 PM

Pre-register now to receive a virtual call link and event updates
www.nyc.gov/escr/work

NYC Department of Design and Construction
Office of Community Outreach & Notification

NYC Small Business Services

WORKFORCE1
A proud partner of the COVERTAGE JOB CENTER NETWORK

Overview of Contracts

Project Area 1 (PA1)

- NTP issued August 16, 2021
- Partial Closures:
 - East River Park south of Stanton St. & Ballfield #3
 - Greenway closure to E. 10th St.
 - Corlears Hook Park & passive lawn
- Delancey St. & Corlears Hook pedestrian bridges under construction. Use Corlears Hook temp. ped bridge
- ongoing ConEd Work
- esplanade removal, soil stabilization and deep sewer work in progress
- floodwall construction activities ongoing around Montgomery Street

Project Area 2 (PA2)

- NTP issued November 2020
- over 1,400 ft of floodwall installed
- Asser Levy Playground Open
 - Gate 18 installed
- Stuyvesant Cove Park including Solar One Area under construction
 - Gate 14 installed
 - site restoration north of E 20th St. underway - Greenway open
 - floodwall construction in progress south of E 20th St. – Greenway closed
- Murphy Brothers flood protection construction in progress

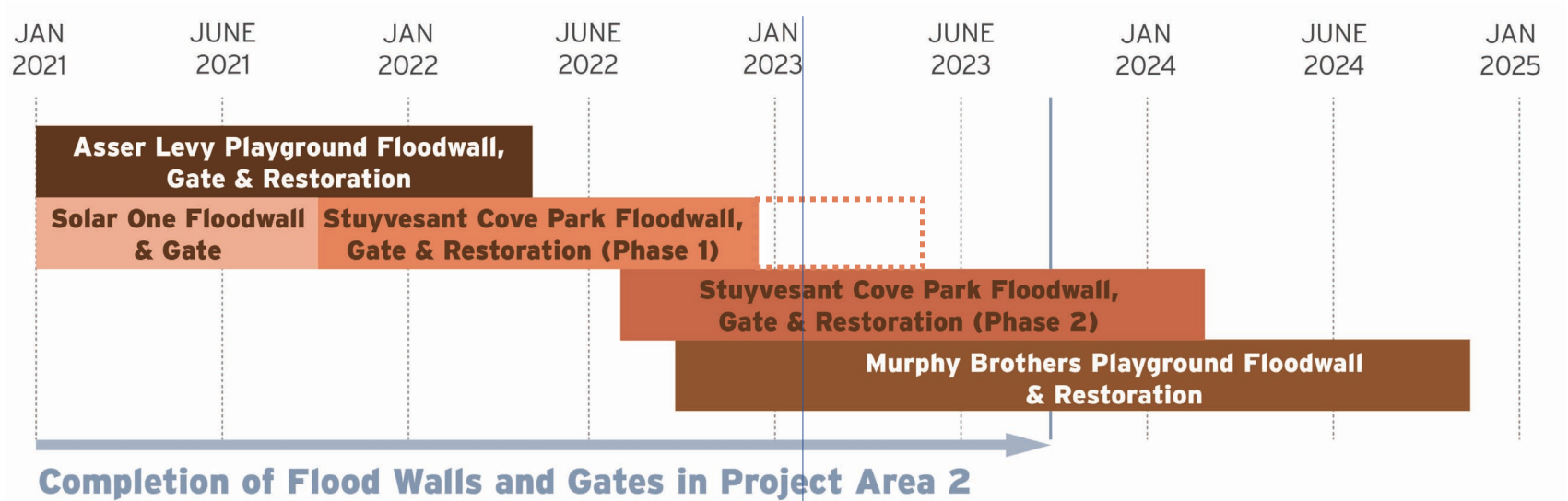
Parallel Conveyance (PC)

- contract awarded in May to NYCC JPL JV
- NTP issued September 13, 2022
- construction mobilization activities started January 2023
- contract duration is approximately 4 years

Project Area 2

PA2 | Construction Progress

ALL WORK IS SUBJECT TO CHANGE



PA2 | Construction Progress

- Gates 14 & 18 have been installed.
- Gates 9-13, 15, 16 & 17 are scheduled to be installed this year.



PA2 | Construction Progress

ALL WORK IS SUBJECT TO CHANGE

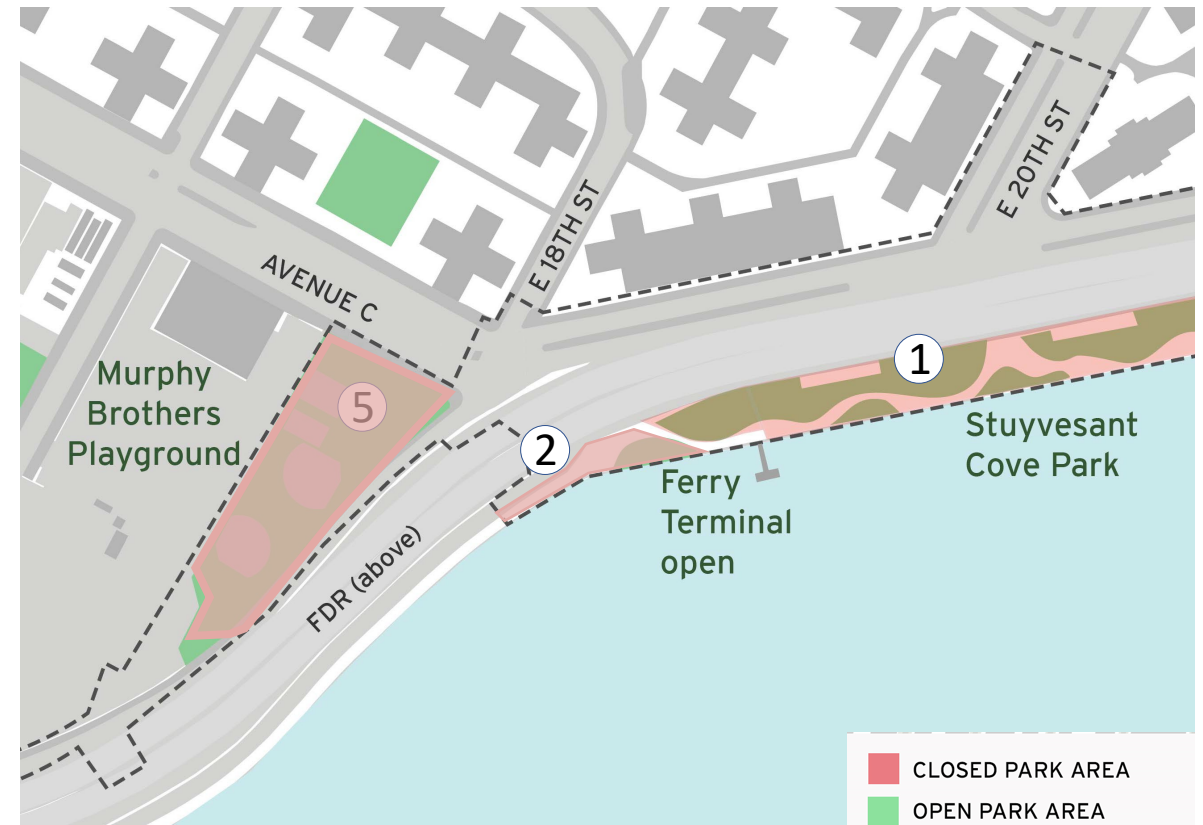
- 1. Asser Levy Playground**
 - opened to public
 - floodwall and floodgate #18 installed
- 2. West Service Road:**
 - floodwall construction
 - floodgate #17 work in progress
 - full completion anticipated in Spring 2023
- 3. E 23rd St. Intersection:**
 - utility work & floodwall construction
 - floodgate work #15 & #16
- 4. Stuyvesant Cove Park north of E 20th St.:**
 - Greenway open
 - landscape iron rail fabrication in process



PA2 | Construction Progress

ALL WORK IS SUBJECT TO CHANGE

1. Stuyvesant Cove Park south of E 20 St:
 - ongoing floodwall construction
 - ferry access will remain open
2. FDR Dr. NB exit 7 ramp:
 - gate installation and ECS work under FDR
3. E 15th Street between Ave C and FDR Dr. within Con Edison
 - sewer reconstruction
4. Murphy Brothers Playground
 - floodwall construction



PA2 | Construction Progress

CONSTRUCTION PROGRESS/ APPROACH

- Stuyvesant Cove Park under construction
- Area #1 – anticipated to reopen in spring 2023
- Area #2 – scheduled to reopen in early 2024



PA2 | Current Greenway Access

ACCESS/ SIGNAGE/ SAFETY

- Greenway from E20th St south to E12th St is closed and access to East River Park from Stuyvesant Cove Park is no longer
- access East River Park via detour at E10th Street or E Houston Street
- **Stuyvesant Cove Park Ferry access remains open via E18th Street**
- the Greenway from E20th St north remains open
- **Anticipated to reopen summer 2023**



PA2 | Construction Photos



Greenway curb install south of E20th Street - February 2023



Stuyvesant Cove Park south restoration - February 2023

Project Area 1

PA1 | Early 2023 Construction Activities

ALL WORK IS SUBJECT TO CHANGE

1. Esplanade removal activities along the waterfront.
Deep sewer activities and pile install.
Floodwall (Combi-wall) installation.
Parks O&M Building retaining wall
2. Delancey Street utility, pile and abutment work.
3. Construction for new Corlears Hook bridge.
4. Passive lawn partial closure for utility work.
5. Utility work near Montgomery Street & South Street.
Begin floodwall construction in 2023.
6. Montgomery St. – Cherry St. Greenway floodwall activities.
7. **Ballfield #3: construction activities completed and restoration in progress.**
8. ConEd work in Shared Use Path E. Houston Street to E. 10th Street; Houston St retaining wall work to begin this year.
Slip Ramps in use.
Greenway closure from E. 12th Street north to Stuyvesant Cove Park.
9. E 10th Street utility work.
10. Ongoing partial FDR lane closures continue at various locations.

Weekly Bulletins & Advisories are issued with construction activities.
Saturday work is anticipated for some work operations as indicated.



PA1 | Construction Photos



Sewer Chamber - February 2023



Combi-Wall- February 2023

PA1 | Archaeology Signage

In Your Community

EAST SIDE
COASTAL
RESILIENCY

Archaeology in Corlears Hook

DDC Department of
Design and
Construction
Office of Community Outreach & Notification

 NYC Parks

In December of 2022, the project’s archaeological team started exposing building remains at Corlears Hook Park as part of the East Side Coastal Resiliency contract for Project Area 1. The Scope of Work for the archaeologists calls for test excavations to fully understand the development of the area before the park was built. The work is being done with oversight by the NY State Historic Preservation Office (SHPO), Tribal Historic Preservation Offices, the NYC Landmarks Preservation Commission (LPC), and NYC Parks.

Based on historic maps, some of the foundations unearthed belonged to the North River Sugar Refining Company. The sugar refinery was established on the site of an iron foundry that was listed in 1851 as Pease & Murphy iron founders. In the area north of the sugar refinery/iron foundry, archaeological fieldwork has concentrated on a row of residential/commercial structures that fronted on Cherry and Corlears Streets. Corlears Street no longer exists, but its former alignment runs beneath the park. Houses were built on these lots in the 1820s and 30s, and stood into the mid-1890s, at which time the entire block was razed for the construction of Corlears Hook Park. When the park was first created, fill soils were brought in for landscaping, and later the park was re-landscaped when the FDR Drive was built.

As of January 2023, remains of the factories have been recorded by the archaeologists and LPC and SHPO concurred that this portion of the site can be backfilled. Archaeological investigations now focus on the former yard areas within the house lots to determine whether the exposed privy pits and cisterns, which were typically backfilled with objects discarded from everyday life, contain artifact deposits. The site is also being tested for traces of earlier 18th-century use and Indigenous Peoples occupation. Archaeologists are in consultation with the Stockbridge-Munsee Community Band of Mohican Indians Tribal Historic Preservation Office (THPO). The archaeological testing is still underway as is historical research and future updates will be provided to the community as the work continues.



View to east of sugar refinery/iron foundry walls. The north foundation of the factory is at left. The rectangular area at top is an apparent chimney base. A bluestone walkway is exposed at right.



Aerial view of Corlears Hook Park construction site
Photo credit: Friends of Corlears Hook Park



Cistern, used to provide water to local families.



View to southwest showing re-used and partially abandoned iron foundry remains, with chimney base in foreground.

East Side Coastal Resiliency
www.nyc.gov/escr



East Side Coastal Resiliency

The East Side Coastal Resiliency (ESCR) Project is a coastal protection initiative, jointly funded by the City of New York and the federal government, aimed at reducing flood risk due to coastal storms and sea level rise on Manhattan's East Side from East 25th Street to Montgomery Street. The boundaries of this project correspond with the natural "pinch-points" in the 100-year floodplain: areas where the land is higher along the coastline, making it easier to close the system off from water entering from the north and south. The project design integrates flood protection into the community fabric, improving waterfront open spaces and access, rather than walling off the neighborhood. Construction on the East Side Coastal Resiliency project will begin in Fall 2020 and continue through 2025.

 Construction Progress	 Resiliency & Flood Protection	 Project Background & Goals	 Project Design
Construction Notices View our most recent community presentations for updates as we prepare for upcoming construction activities.	Resiliency and Flood Protection Learn more about ESCR's resiliency and the forward-thinking flood protection measures being implemented to protect 110,000 New Yorkers from the impacts of climate change.	Project Background and Goals Read about the history and background of ESCR, and the goals driving this technically complex infrastructure project.	Project Design From flood protection measures to bike lanes and ball fields, the ESCR project is improving open spaces and access in the Lower East Side while strengthening the city's coastline.

NEED MORE INFORMATION?

VISIT US AT:

www.nyc.gov/escr

