

East Side Coastal Resiliency Construction Update

NYCHA Riis Tenant Association Meeting

In-person

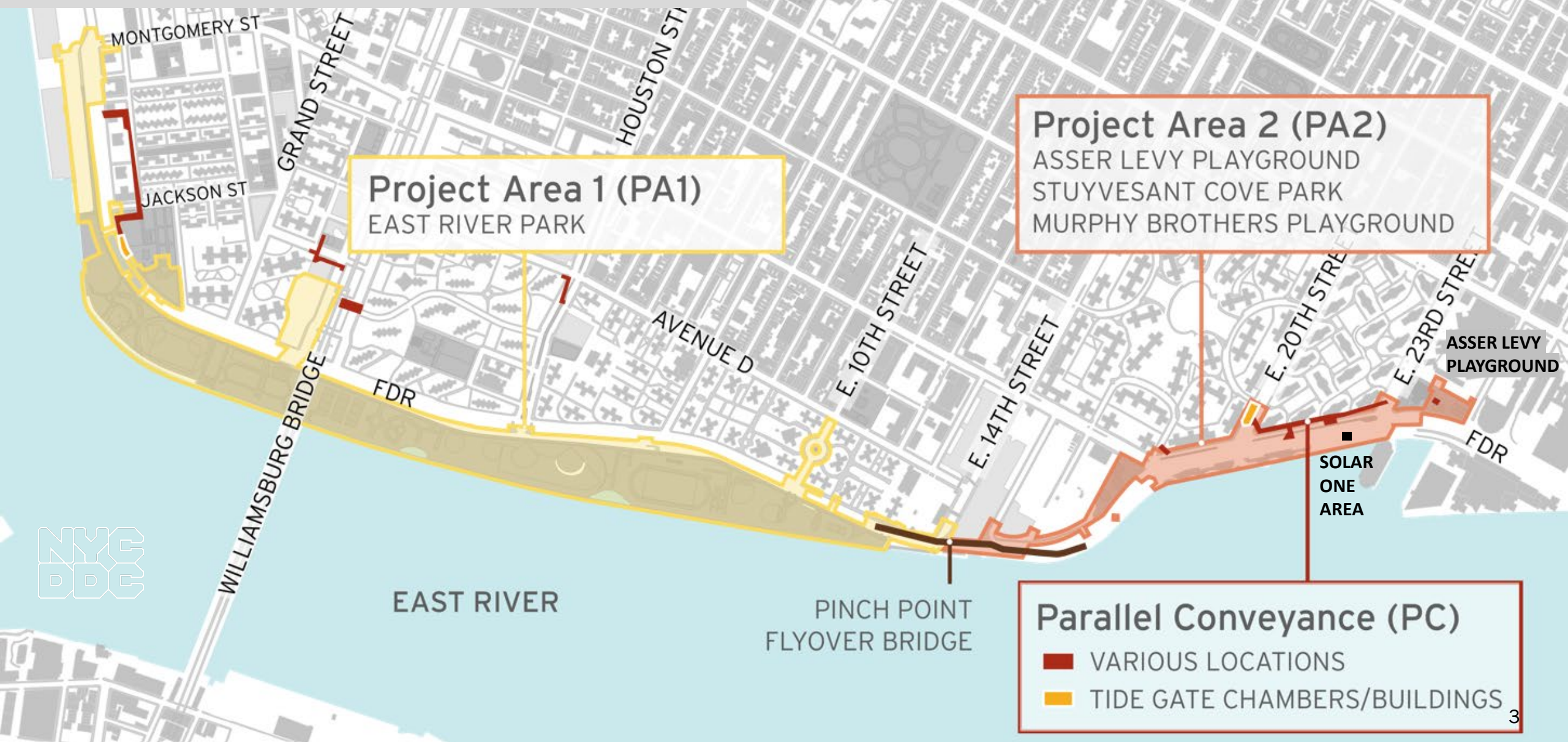
March 14, 2023



Highlights

- Overview of Contracts
- Project Area 1 Construction Updates
- E 10th Street work
- Air Quality Monitoring
- Community Impacts & Resources

PROJECT AREA OVERVIEW



Overview of Contracts

Project Area 1 (PA1)

- NTP issued August 16, 2021
- Partial Closures:
 - East River Park south of Stanton St.
 - Greenway closure to E. 10th St.
 - Corlears Hook Park & passive lawn
- Delancey St. & Corlears Hook pedestrian bridges under construction. Use Corlears Hook temp. ped bridge
- ongoing ConEd Work
- esplanade removal and deep sewer work in progress
- floodwall construction activities ongoing
- O&M retaining wall in progress

Project Area 2 (PA2)

- NTP issued November 2020
- over 1,400 ft of floodwall installed
- **Asser Levy Playground Open**
 - Gate 18 installed
- **Stuyvesant Cove Park** including Solar One Area under construction
 - Gate 14 installed
 - site restoration north of E 20th St. underway - Greenway open
 - floodwall construction in progress south of E 20th St. – Greenway closed
- **Murphy Brothers** flood protection construction in progress

Parallel Conveyance (PC)

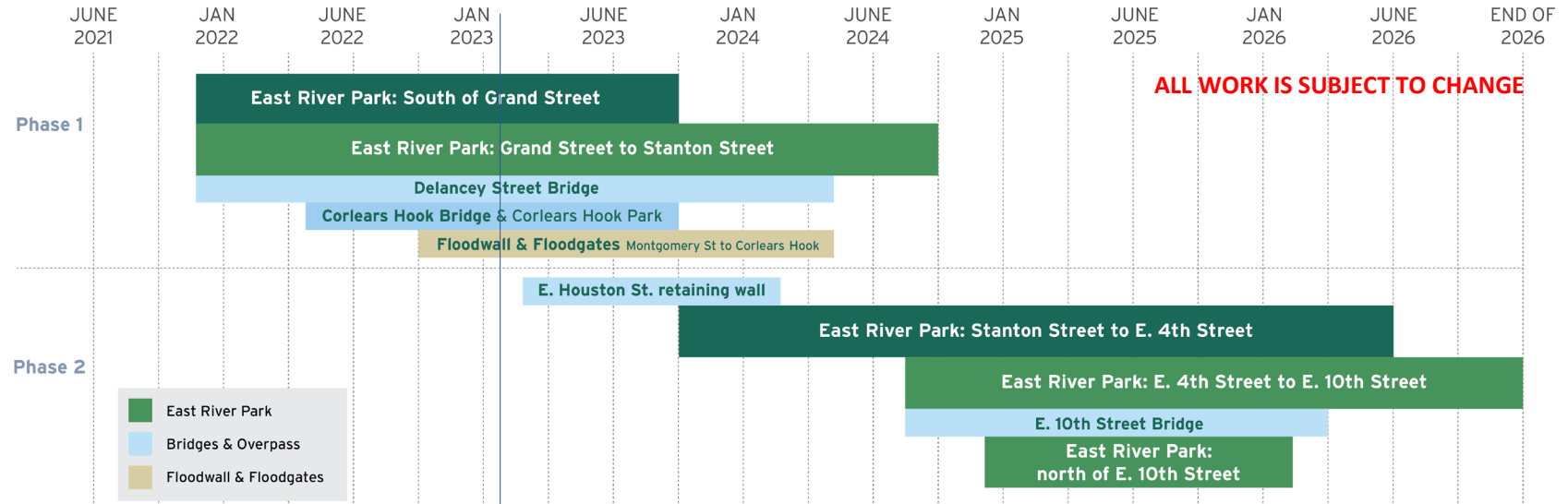
- contract awarded in May to NYCC JPL JV
- NTP issued September 13, 2022
- construction mobilization activities started January 2023
- subsurface investigations in progress
- contract duration is approximately 4 years

PA 1 | Construction Progress

- Link to PA1 Construction Timeline:

<https://www1.nyc.gov/site/escr/project-updates/project-updates.page>

Open Space available:
52%



PA 1 | Construction Activities

ALL WORK IS SUBJECT TO CHANGE

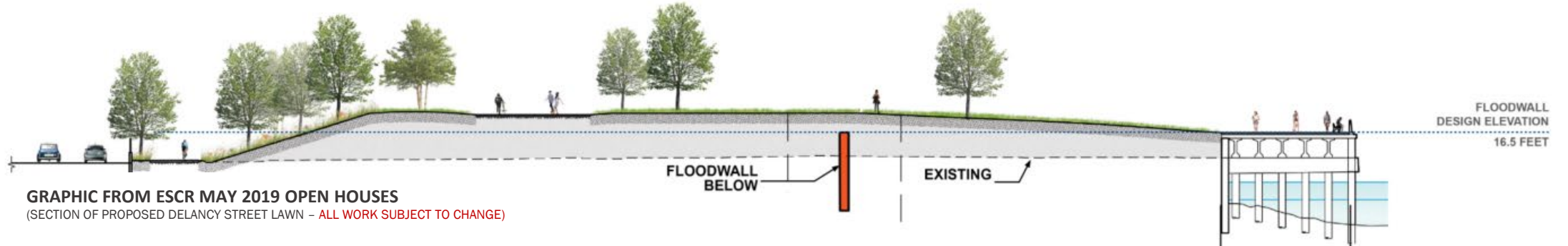
1. Esplanade removal activities along the waterfront.
Deep sewer activities and pile install.
Floodwall (Combi-wall) installation.
2. Delancey Street utility, pile and abutment work.
3. Construction for new Corlears Hook bridge.
4. Passive lawn partial closure for utility work.
5. Utility work near Montgomery Street & South Street.
6. Begin floodwall construction in 2023.
7. Montgomery St. – Cherry St. Greenway floodwall activities.
8. Operations & Maintenance Building retaining wall.
9. Ballfield #3 restoration in progress.
10. ConEd work in Shared Use Path E. Houston Street to E. 10th Street
Slip Ramps in use.
11. E 10th Street utility work.
12. Ongoing partial FDR lane closures continue at various locations.

Weekly Bulletins & Advisories are issued with construction activities.
Saturday work is anticipated for some work operations as indicated.



PA 1 | Construction Work Sequencing

ALL WORK IS SUBJECT TO CHANGE



GRAPHIC FROM ESCR MAY 2019 OPEN HOUSES
(SECTION OF PROPOSED DELANCY STREET LAWN - ALL WORK SUBJECT TO CHANGE)

INLAND

- A. Mobilization & Removals
- B. Sewer Replacement & Upgrade
- C. Floodwall Pile Installation & Concrete Foundation
- D. Concrete Floodwall
- E. Fill & Compaction
- F. Site Elements & Materials (roadway, sidewalks, parks elements)

WATERFRONT / ESPLANADE

- A. Soil Stabilization
- B. Remove Esplanade
- C. Install new combi-wall & cap wall
- D. Install New Esplanade
- E. Fill (as needed by location)
- F. Site Elements & Materials (esplanade & parks elements)

Greenway Access & Detour

- Greenway from E20th St south to E12th St is closed and access to East River Park from Stuyvesant Cove Park is no longer
- access East River Park via detour at E10th Street or E Houston Street
- **Stuyvesant Cove Park Ferry access remains open via E18th Street**
- the Greenway from E20th St north remains open
- **Anticipated to reopen summer 2023**
- ESCR Team is coordinating with NYCDOT on caution signage for E10th Street



PA1 | Construction Photos



Corlears Hook Bridge East Abutment - January 2023



Delancey Street Bridge East Abutment - January 2023



Deep Sewer Excavation and Construction - January 2023

PA1 | Project Renderings at E10th Street



PA 1 | East 10th Street Construction Activities

ALL WORK IS SUBJECT TO CHANGE

2023

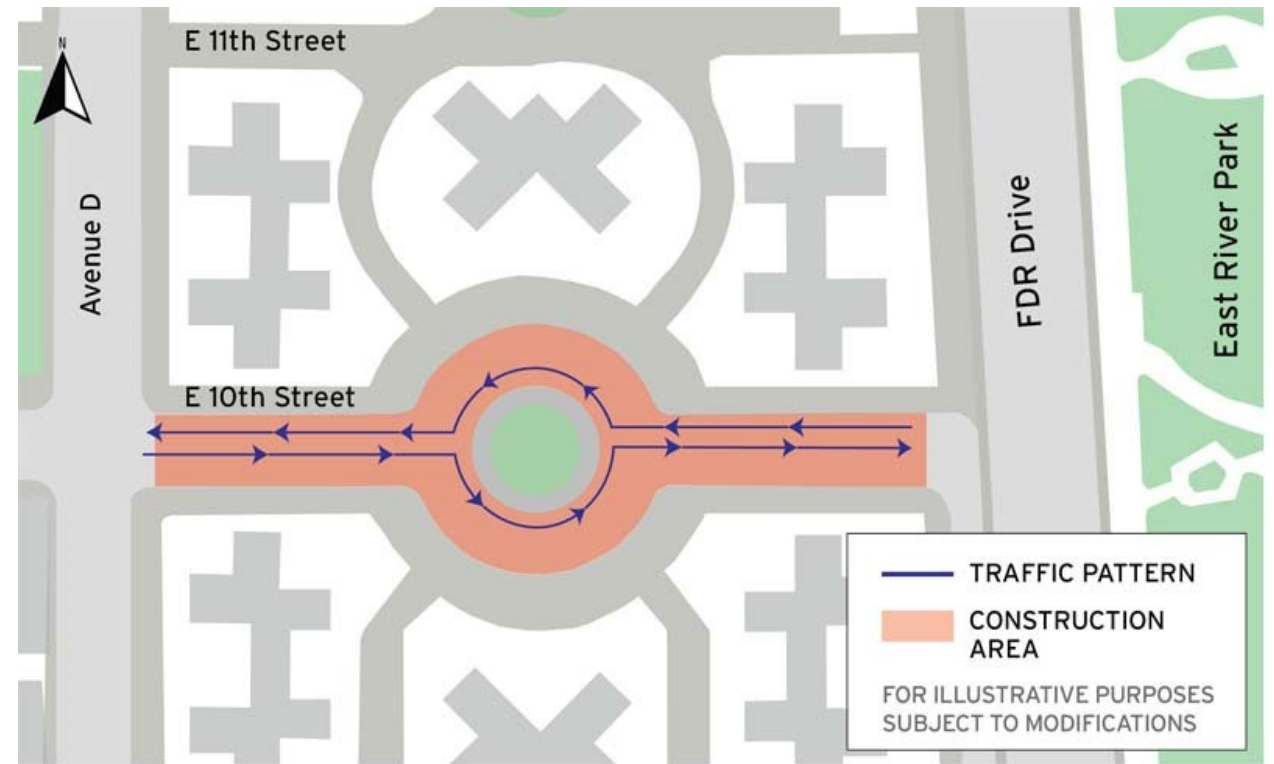
- CURRENT WORK: Utility exploration
Test pits and manhole exploration to understand existing utility layout.
- MARCH - SEPTEMBER: Potential ConEd gas and steam work.
- 2023 SUMMER: ConEd electrical work
- SUMMER/FALL: Start 42" sewer work

2023/2024

- Continue New 42" sewer E 10th St. south side of circle between FDR Dr. and Ave. D
- New 42" sewer middle of E 10th St. between circle and FDR Dr.

2025

- E 10th Street Bridge demolition and reconstruction



CONED ACTIVITIES FOR ESCR PROJECT

- The Contractor is performing coordinated work for ConEd as part of the ESCR Contract
- This work is funded by ConEd
- ConEd provides for their own inspection with oversight by PMCM and DDC
- ConEd work is in compliance with all local and state regulations
- In certain circumstances ConEd may have to prepare areas for work or may perform work in-house

Typical Community Impacts

- Detours and lane closures
 - Vehicular travel lane closures, detours and new traffic patterns
 - Cyclists and pedestrian detours
 - Signage will be posted in advance within the affected areas. Traffic Enforcement Agents and flaggers will be present when necessary to assist vehicles and pedestrians
- Public transportation will be maintained at all times including Ferry landings
- Emergency vehicle and pedestrian access to sidewalks will be maintained at all times
- Water Service Interruptions:
 - During the project there may be some service interruptions. To allow for water line replacement, existing water service must be temporarily shut off.
 - Advance notice will be provided before any service interruption. Water service will be restored at the end of each night.



Environmental Compliance

Environmental Monitoring

Community health and safety is of the utmost importance to the City of New York, the NYC Department of Design and Construction (NYC DDC), and the East Side Coastal Resiliency (ESCR) team.

There are several reportage methodologies the team provides on the ESCR

Environmental Monitoring Webpage: <https://www.nyc.gov/site/escr/project-updates/environmental-monitoring.page>

1. Fact sheet in 3 languages
2. Quarterly Reports
3. Monthly CAG Summaries

You can listen to the CAG updates on the ESCR CAG page:

<https://www.nyc.gov/site/escr/project-updates/community-advisory-group.page>



NYC East Side Coastal Resiliency 311 Search all NYC.gov websites

NYC The East Side Coastal Resiliency Project

한국어 Select Language Text-Size

Home About **Project Updates** Community Engagement Contact Search

Environmental Monitoring

PA1 Construction Notices

PA2 Construction Notices

PC Construction Notices

Environmental Monitoring

Presentations

Newsletters

Gallery 1

Download English Download Spanish Download Chinese

Air Quality

Community health and safety is of the utmost importance to the City of New York, the NYC Department of Design and Construction (NYC DDC), and the East Side Coastal Resiliency (ESCR) team. The ESCR project is committed to providing the community with quarterly air quality monitoring summaries throughout construction. In addition to the monitoring, the team has implemented a multi-level approach to Air Quality Management, described in greater depth within the report, which includes:

1. Air Quality Management Plan
2. Daily Air Quality Mitigation Techniques
3. Daily Air Quality Monitoring
4. Air Quality oversight by environmental specialists

For a quick overview of Air Quality Monitoring for the East Side Coastal Resiliency Project, see the ESCR Air Monitoring factsheet.

Project 1 Area Monitoring Reports

- 4th Quarter 2022 SANDRESM1 Air Quality Monitoring Report
This report covers the monitoring period of October 2022-December 2022 for Project Area 1.
- 3rd Quarter 2022 SANDRESM1 Air Quality Monitoring Report
This report covers the monitoring period of July 2022-September 2022 for Project Area 1.
- 2nd Quarter 2022 SANDRESM1 Air Quality Monitoring Report
This report covers the monitoring period of April 2022-June 2022 for Project Area 1.
- 1st Quarter 2022 SANDRESM1 Air Quality Monitoring Report
This report covers the monitoring period of January 2022-March 2022 for Project Area 1.

Project 2 Area Monitoring Reports

- 4th Quarter 2022 SANDRESM2 Air Quality Monitoring Report
This report covers the monitoring period of October 2022-December 2022 for Project Area 2.
- 3rd Quarter 2022 SANDRESM2 Air Quality Monitoring Report
This report covers the monitoring period of July 2022-September 2022 for Project Area 2.
- 2nd Quarter 2022 SANDRESM2 Air Quality Monitoring Report
This report covers the monitoring period of April 2022-June 2022 for Project Area 2.
- 1st Quarter 2022 SANDRESM2 Air Quality Monitoring Report
This report covers the monitoring period of January 2022-March 2022 for Project Area 2.
- Second Half 2021 Air Quality Monitoring Report
This report covers the monitoring period of July 2021-December 2021 for Project Area 2.
- First Half 2021 Air Quality Monitoring Report
This report covers the monitoring period of January 2021-June 2021 for Project Area 2.
- Original Report issued July 1, 2021 (does not include June 2021).

Regular air monitoring updates are provided at Community Advisory Group (CAG) Meetings. The summary slides from those meetings have been assembled below:

- Download 2022 PA1 CAG Air Monitoring Summaries
- Download 2022 PA2 CAG Air Monitoring Summaries
- Download 2021 PA2 CAG Air Monitoring Summaries

2

3

Environmental Monitoring Fact Sheet

东海岸韧性防洪项目
East Side Coastal Resiliency
www.nyc.gov/escr

空气质量监控

社区的健康和安全对纽约市的至关重要。在我们为曼哈顿东区的居民们建造防洪保护期间，东海岸防洪

Resiliencia Costera del Lado Este
www.nyc.gov/escr **Monitoreo de calidad del aire**

La salud y seguridad de la comunidad es extremadamente importante para la ciudad de Nueva York y el equipo del Proyecto de Resiliencia Costera del lado este (ESCR) se asegura de que haya un impacto muy limitado en la calidad del aire cercano mientras construimos protección contra inundaciones para los neoyorquinos en el

空气质量监控

社区的健康和安全对纽约市的至关重要。在我们为曼哈顿东区的居民们建造防洪保护期间，东海岸防洪

East Side Coastal Resiliency
www.nyc.gov/escr **Air Quality Monitoring**

Community health and safety is extremely important to the City of New York. The East Side Coastal Resiliency (ESCR) project team is ensuring there is very limited impact on nearby air quality as we construct flood protection for New Yorkers on Manhattan's East Side.

1. We are constantly monitoring the air quality around our construction activities.

WHAT ARE WE MEASURING?

Particulate Matter (PM), or particle pollution, is a term for the solid particles and liquid droplets found in the air.

MEASURED SIZES:

PM 2.5: smaller particles typically from vehicle emission

PM 10: larger particles typically from dust

Monitoring machines are placed strategically along the edge of active construction activities.

Existing air flows →

Monitor A measures existing particles

→

Air flows through site

→

Monitor B measures existing particles and any potential increase from construction or other activities

→

NET PARTICULATE MATTER

reflects the potential increase in particle pollution directly related to construction activities

NET PARTICULATE MATTER is the standard metric for monitoring and assessment of construction impacts on air quality, as well as compliance with federal limits.

2. We are taking steps to control dust and limit emissions during construction.

Steps to reduce construction vehicle pollution and emissions:

- Use barging for large deliveries
- Restrict truck idling time
- Use Ultra-Low Sulfur Diesel fuel
- Minimize use of diesel engines
- Use the best available technology for non-road diesel engines

Steps to reduce and control dust:

- Cover and secure loads for all trucks hauling loose material including sand and dirt
- Use water spray for roads, trucks, truck wheels, excavation areas, and stockpiles
- Cover stockpiles with anchored tarps
- Use extra care, including more frequent application of these measures, during dry and high wind periods

These steps are implemented during daily construction activities and are increased if monitoring machines indicate additional action is needed. Visit the ESCR website to view weekly Construction Bulletins and Advisories.

MONITOR B (FAVOR DEL VIENTO)

MONITOR A (UPWIND)

MONITOR B (DOWNWIND)

NET PARTICULATE MATTER

Refleja el aumento potencial de contaminación por partículas directamente relacionado con actividades de construcción para monitorear y evaluar los como el cumplimiento de los

APOSTAR MATERIA PARTICULADA

Refleja el aumento potencial de contaminación por partículas directamente relacionado con actividades de construcción para monitorear y evaluar los como el cumplimiento de los

¿SABÍAS? Una barcaza tiene la capacidad de desviar hasta 57 camiones de las carreteras locales.

DID YOU KNOW? One barge has the capacity to divert up to 57 trucks from local roads.

¿SABÍAS? Una barcaza tiene la capacidad de desviar hasta 57 camiones de las carreteras locales.

DID YOU KNOW? One barge has the capacity to divert up to 57 trucks from local roads.

¿SABÍAS? Una barcaza tiene la capacidad de desviar hasta 57 camiones de las carreteras locales.

DID YOU KNOW? One barge has the capacity to divert up to 57 trucks from local roads.

¿SABÍAS? Una barcaza tiene la capacidad de desviar hasta 57 camiones de las carreteras locales.

DID YOU KNOW? One barge has the capacity to divert up to 57 trucks from local roads.

东海岸韧性防洪项目
East Side Coastal Resiliency
www.nyc.gov/escr

空气质量监控

社区的健康和安全对纽约市的至关重要。在我们为曼哈顿东区的居民们建造防洪保护期间，东海岸防洪

Resiliencia Costera del Lado Este
www.nyc.gov/escr **Monitoreo de calidad del aire**

La salud y seguridad de la comunidad es extremadamente importante para la ciudad de Nueva York y el equipo del Proyecto de Resiliencia Costera del lado este (ESCR) se asegura de que haya un impacto muy limitado en la calidad del aire cercano mientras construimos protección contra inundaciones para los neoyorquinos en el

空气质量监控

社区的健康和安全对纽约市的至关重要。在我们为曼哈顿东区的居民们建造防洪保护期间，东海岸防洪

East Side Coastal Resiliency
www.nyc.gov/escr **Air Quality Monitoring**

Community health and safety is extremely important to the City of New York. The East Side Coastal Resiliency (ESCR) project team is ensuring there is very limited impact on nearby air quality as we construct flood protection for New Yorkers on Manhattan's East Side.

3. We are guided by federal air quality standards.

Through careful monitoring with real-time alerts, our team knows when we need to take additional measures during construction to protect air quality for residents.

- The Environmental Protection Agency (EPA) sets National Ambient Air Quality Standards which define regulatory limits to protect public health called Permissible Exposure Levels (PEL).
- The ESCR Team and Environmental Specialists receive real-time alerts when Particulate Matter (PM) numbers approach an Action Level, which is set below the permissible exposure level.
- If it is determined that the construction is not meeting the standards set by oversight agencies, work will be halted and further assessed to assure protection to residents and park users.

The EPA has set a 24-hour time weighted average (TWA) as standard for evaluating the particle pollution levels, meaning that they average potential exposure to particulate matter over a 24-hour period.

The ESCR project evaluates air quality at 15-min TWA intervals, meaning we average exposures over 15-minute periods. This more conservative approach will help the ESCR team to monitor the project's effect on air quality more closely.

4. Environmental oversight is multi-tiered with checks & balances.

AGENCY OVERSIGHT

- NYSDEC: Air/Dust/Noise/Water Monitoring
- NYSDEC: Construction Management
- NYSDEC: Contaminated Soil/Water/Air

MANAGEMENT

- HNTB-LIRO JOINT VENTURE: Project and Construction Management (PMCM) Resident Engineering Inspection Services Team
- PROJECT AREA 2 CONTRACTOR: Perfetto Contracting Co.
- PROJECT AREA 1 CONTRACTOR: IFC Resiliency Partners

ENVIRONMENTAL MONITORING

- ENVIRONMENTAL SPECIALIST PA2: Preferred Environmental Services. PA2 will assess closer to work in MGP areas
- PA2 ENVIRONMENTAL CONSULTANT: Distinct Engineering Solutions, Inc.
- PA1 ENVIRONMENTAL CONSULTANT: SA Engineering

- Agencies provide regulatory guidance and approve the Contractors' environmental plans at the start of the contract.
- They make regular inspections to ensure compliance throughout construction.
- The PMCM team can stop the Contractors' work or withhold payment if they determine that the contractors are not taking appropriate measures to limit particle pollution.
- The Contractors are responsible for the safety of their workers and the community surrounding the project site.
- The PMCM's environmental specialist is responsible for monitoring work in designated Areas of Concern from historic Manufactured Gas Plants (MGP).
- The Contractors' environmental consultants are responsible for monitoring particle pollution and alerting the project team (City, PMCM and Contractor) if particulate matter reaches the Action Level.

5. Air quality updates for the community.

The ESCR Team provides Air Quality Monitoring updates at Community Advisory Group (CAG) meetings and through the ESCR Quarterly Air Quality Monitoring Reports both found on the ESCR website.

MONITOR B (FAVOR DEL VIENTO)

MONITOR A (UPWIND)

MONITOR B (DOWNWIND)

NET PARTICULATE MATTER

Refleja el aumento potencial de contaminación por partículas directamente relacionado con actividades de construcción para monitorear y evaluar los como el cumplimiento de los

APOSTAR MATERIA PARTICULADA

Refleja el aumento potencial de contaminación por partículas directamente relacionado con actividades de construcción para monitorear y evaluar los como el cumplimiento de los

¿SABÍAS? Una barcaza tiene la capacidad de desviar hasta 57 camiones de las carreteras locales.

DID YOU KNOW? One barge has the capacity to divert up to 57 trucks from local roads.

¿SABÍAS? Una barcaza tiene la capacidad de desviar hasta 57 camiones de las carreteras locales.

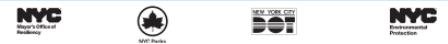
DID YOU KNOW? One barge has the capacity to divert up to 57 trucks from local roads.

¿SABÍAS? Una barcaza tiene la capacidad de desviar hasta 57 camiones de las carreteras locales.

DID YOU KNOW? One barge has the capacity to divert up to 57 trucks from local roads.

¿SABÍAS? Una barcaza tiene la capacidad de desviar hasta 57 camiones de las carreteras locales.

DID YOU KNOW? One barge has the capacity to divert up to 57 trucks from local roads.



Environmental Monitoring Locations



Environmental Monitoring

- Air, noise, and vibration monitors are active **24 hours/day, 7 days/week**
- The project **follows all federal, state and local guidelines**. To date construction activities have not exceeded National Ambient Air Quality Standards
- Monitoring machines are on site to measure particles from construction vehicle emissions and dust as well site conditions such as wind speed and temperature.
- These machines are placed strategically along the edge of active construction activities.

WHAT ARE WE MEASURING?

Particulate Matter (PM), or particle pollution, is a term for the solid particles and liquid droplets found in the air.

MEASURED SIZES:

PM 2.5: smaller particles typically from vehicle emission
PM 10: larger particles typically from dust

3. We are guided by federal air quality standards.

Through careful monitoring with real-time alerts, our team knows when we need to take additional measures during construction to protect air quality for residents.

- The Environmental Protection Agency (EPA) sets National Ambient Air Quality Standards which define regulatory limits to protect public health called **Permissible Exposure Levels (PEL)**.
- The ESCR Team and Environmental Specialists receive **real-time alerts** when Particulate Matter (PM) numbers approach an **Action Level**, which is set below the permissible exposure level.
- If it is determined that the construction is not meeting the standards set by oversight agencies, work will be halted and further assessed to assure protection to residents and park users.

The EPA has set a **24-hour time weighted average (TWA)** as standard for evaluating the particle pollution levels, meaning that they average potential exposure to particulate matter over a 24-hour period.

The ESCR project evaluates air quality at **15-min TWA intervals**, meaning we average exposures over 15-minute periods. This more conservative approach will help the ESCR team to monitor the project's effect on air quality more closely.



AUGUST 2022 | Summary

Montgomery Street to Jackson Street:

PM2.5: (4) around 15 minutes; vehicle traffic at FDR on-ramp

PM10: (1) around 15 minutes; vehicle traffic at FDR on-ramp

Jackson Street to Williamsburg Bridge:

PM2.5: (3) around 15 minutes vehicle traffic and construction activities – dust suppression techniques applied

PM10: (1) 20 & (1) 40 minutes; construction demo activities – dust suppression techniques applied

Williamsburg Bridge to Northern Project Limit

PM2.5: (2) 15 & (1) 40 minutes; construction activities – dust suppression techniques applied

PM10: 15 minutes; construction activities – dust suppression techniques applied

ConEd Work/East River Park

PM2.5: 15 minutes; 3rd party inside the park grilling – no mitigation

PM10: (2) 15 minutes; overnight – no mitigation and 3rd party inside the park grilling

ESCR MITIGATION TECHNIQUES - AIR

We are taking steps to control dust and limit emissions during construction.

To protect air quality, we are taking extensive preventive measures during daily construction activities, and we will increase these measures if monitoring machines indicate additional action is needed.

Measures to reduce construction vehicle pollution and emissions:

- Use Ultra-Low Sulfur Diesel fuel
- Minimize use of diesel engines, use the best available technology for non-road diesel engines, and restrict truck idling time
- Use barging for large deliveries. One barge has the capacity to divert up to 57 trucks from local roads.

Measures to reduce and control dust:

- Cover and secure loads for all trucks hauling loose material including sand and dirt
- Use water spray for roads, trucks, truck wheels, excavation areas, and stockpiles
- Cover stockpiles with anchored tarps
- Use extra care, including more frequent application of these measures, during dry periods and high wind periods



ESCR MITIGATION TECHNIQUES - SOIL

We are taking steps to protect NYC waters from construction related sediment pollution.

To mitigate stormwater pollution, we are taking extensive measures during daily construction activities. These activities are standard in the construction industry and are regulated by NYSDEC and NYCDEP.

New York State Department of Environmental Conservation (NYSDEC) State Pollution Discharge Elimination System (SPEDES) Permit Program:

- Prevent petroleum contaminants and sediment from entering the sewer system (ex. using settling tanks)
- Monitoring volume of water entering the sewer system
- Utilize previously identified and approved discharge locations

New York City Department of Environmental Protection (DEP) Stormwater Pollution Prevention Plan (SWPPP) manages and mitigates construction pollution through:

- Hay bales and silt barriers cover storm drains and prevent soil particles from entering the sewer system and East River
- Silt fences to prevent soil particles from leaving the site
- Turbidity curtains to trap shoreline and incidental sediment from entering the East River
- Soil stabilization techniques including construction staging, tarps, and hay mats
- Cover stockpiles with anchored tarps, spray construction site with water, and cover all truck loads leaving the site to prevent dust emissions
- Frequent SWPPP inspections

ESCR MITIGATION TECHNIQUES - SOIL



Silt Fence at Corlears Hook Park



Silt Barrier along Esplanade



Turbidity Curtain at removal of Embayment Esplanade

Resources

- Visit Us at: www.nyc.gov/escr
- Inquiry Tool: www.nyc.gov/escr/contact
- Community Construction Liaison:
 - PA1: Joyce Xin (929) 844-0408
Email: ESCRCL1@ddccr.com
- CB 3 Parks Meetings
- Tenant Association (TA) meetings
- On-site tabling
- On-site signage



Construction Bulletin East Side Coastal Resiliency
www.nyc.gov/escr

PROJECT AREA 1 – Two Week Look Ahead
11/05/22 - 11/19/22

PROJECTS: SANDRESM1 | BOROUGH: MANHATTAN | DATE ISSUED: 11/04/22

The following is an anticipated work schedule for the upcoming week. However, due to unforeseen field and weather conditions, it may become necessary to change some scheduled work locations, operations, and dates. The community will be advised of changes.

Map Key	Date	Work Hours	Location	Operation
1	11/05/22-11/19/22	6:00 am to 6:00 pm	East River Park: South of Stanton Street	Soil stabilization activities & espalane removal along waterfront. Ongoing deep excavation sewer work and pile installation. Weekend work anticipated.
2	11/07/22-11/18/22	7:00 am to 5:00 pm	East River Park: Delancey Street Bridge	Ongoing site preparation on the park side for the new Delancey Street Bridge.
3	11/07/22-11/18/22	7:00 am to 5:00 pm	East River Park: Entrances at E. Houston Street, E. 6th St. Bridge and E. 5th St. Bridge are open.	Work and backfilling, see Advisory.

GREENWAY PEDESTRIAN ACCESS PLAN - SUBJECT TO MODIFICATIONS

Sheet Pile for foodwall along the Greenway October 2022

Questions? / Registrar? / Inquiries? Contact Sofia Quiñones at (347) 626-8724, **Joyce Xin** at (929) 844-0406, ESCRCL1@ddccr.com, or via web inquiry: www.nyc.gov/escr/contact. During non-construction hours, please contact the New York City Government Services and Information Hotline at 311 or Universal Emergency Number 311.

EAST SIDE COASTAL RESILIENCY Department of Design and Construction

Progress & Community

PA2 | Completed Areas



Asser Levy Playground – May 2022, Floodgate – July 2022



Stuyvesant Cove Park – November 2022, Floodwall – May 2022



Community Engagement



ESCR Community Call for Art Program – May 2022

East Side Coastal Resiliency
Project Area 1

The East Side Coastal Resiliency (ESCR) project is a coastal protection initiative, jointly funded by the City of New York and the Federal government, aimed at reducing flood risk due to coastal storms and sea level rise on Manhattan's East Side. The ESCR project will protect 2.5 million New Yorkers from the property and economic damage by reducing flood risk to communities, properties, businesses, critical infrastructure, and public open spaces. In addition to providing flood protection, the project will strengthen and enhance neighborhood spaces by improving accessibility, fostering ecological diversity, and delivering improved recreational amenities to a vibrant and highly diverse community.

Project Area 1 Overview

Location: Montgomery Street to East 140th Street along the FDR Drive including:

- East River Park
- Chelsea West (New Quarter)
- Chelsea West Bridge
- Chelsea East Bridge
- East Houston Street Overpass
- East 106 Street Bridge
- Local streets

Scope of Work:

- Raise park 8.5 feet
- Install Floodwall & Gates
- Expansive reconstruction
- Combined Storm Overpass (CSO)
- and utility work
- Cost Estimate work coordination

Construction Management: New York City Department of Design and Construction (NYCDDC), Thomas Fahy, P.E., Commissioner

Summer Agency: New York City Department of Parks & Recreation (NYC Parks), Sun Dattaguru, Commissioner

Design Consultant: ARUP, LLC, Ar

Program & Construction Management: HOK, Inc., Ar

Contractor: UFC Readylink Partners

Questions? (Pre)Project # 2022-001
All questions, please email: escr@nyc.gov
Sonia Quiñones, Core and Information Team, 347 428-3724
Tanya Lee, ESCR/CR/CSO, 329-844-8488
Inquiries | Consult on line | nyc.gov/escr

Project Area 1 & 2: Both projects are designed to be completed by 2026. The three contracts include areas E201 and E202.

Project ID	Budget	Substantial completion
SANDEMS1	\$1.27 B	2026
SANDEMS2	\$1.13 B	2026
SANDEMS3	\$1.15 B	2026

Department of Design and Construction | NYC Parks | UFC Readylink Partners

East Side Coastal Resiliency

The East Side Coastal Resiliency (ESCR) project is a coastal protection initiative, jointly funded by the City of New York and the Federal government, aimed at reducing flood risk due to coastal storms and sea level rise on Manhattan's East Side. The ESCR project will protect 2.5 million New Yorkers from the property and economic damage by reducing flood risk to communities, properties, businesses, critical infrastructure, and public open spaces. In addition to providing flood protection, the project will strengthen and enhance neighborhood spaces by improving accessibility, fostering ecological diversity, and delivering improved recreational amenities to a vibrant and highly diverse community.

Project Area 1 Overview

Location: Montgomery Street to East 140th Street along the FDR Drive including:

- East River Park
- Chelsea West (New Quarter)
- Chelsea West Bridge
- Chelsea East Bridge
- East Houston Street Overpass
- East 106 Street Bridge
- Local streets

Scope of Work:

- Raise park 8.5 feet
- Install Floodwall & Gates
- Expansive reconstruction
- Combined Storm Overpass (CSO)
- and utility work
- Cost Estimate work coordination

Construction Management: New York City Department of Design and Construction (NYCDDC), Thomas Fahy, P.E., Commissioner

Summer Agency: New York City Department of Parks & Recreation (NYC Parks), Sun Dattaguru, Commissioner

Design Consultant: ARUP, LLC, Ar

Program & Construction Management: HOK, Inc., Ar

Contractor: UFC Readylink Partners

Questions? (Pre)Project # 2022-001
All questions, please email: escr@nyc.gov
Sonia Quiñones, Core and Information Team, 347 428-3724
Tanya Lee, ESCR/CR/CSO, 329-844-8488
Inquiries | Consult on line | nyc.gov/escr

Project Area 1 & 2: Both projects are designed to be completed by 2026. The three contracts include areas E201 and E202.

Project ID	Budget	Substantial completion
SANDEMS1	\$1.27 B	2026
SANDEMS2	\$1.13 B	2026
SANDEMS3	\$1.15 B	2026

Department of Design and Construction | NYC Parks | UFC Readylink Partners

Community Advisory

Nightwork: Floodwall Operations at NB FDR Drive from Montgomery Street to Cherry Street
Starting week of July 25th, 2022
9:00 pm to 5:00 am
Ongoing for several months

To facilitate construction of the floodwall, preparation activities for pile install will necessitate overnight work with FDR lane closures. After preparation activities, overnight pile install will begin. Noise monitors are in place.

FDR overpass at 83rd northbound entrance (Montgomery Street) will remain open unless otherwise indicated. See weekly bulletin for more information.

Questions? (Pre)Project # 2022-001
All questions, please email: escr@nyc.gov
Sonia Quiñones, Core and Information Team, 347 428-3724
Tanya Lee, ESCR/CR/CSO, 329-844-8488
Inquiries | Consult on line | nyc.gov/escr

Department of Design and Construction | NYC Parks | UFC Readylink Partners



ESCR flyers, Community Tabling – September 2022, Work With Us Event – October 2022

Work With Us

- Visit Us at: <https://www.nyc.gov/site/escr/contact/work-with-us.page>
- ESCR & other local resources
- Resume Review

ESCR Workforce Opportunities

The East Side Coastal Resiliency (ESCR) project is a coastal protection initiative, jointly funded by the City of New York and the federal government, aimed at reducing flood risk due to coastal storms and sea level rise on Manhattan's East Side from East 25th Street to Montgomery Street.

Please use the form below to submit your contact information and qualifications for contract opportunities and job positions with the ESCR project.

For more information, please visit our [Work With Us](#) website.

Name*

Phone Number*

Email Address*

Zip Code*

Position*
Choose the opportunity that for which you would like to be considered.

000 - Resume Review

NYC East Side Coastal Resiliency 311 Search all NYC.gov websites

NYC The East Side Coastal Resiliency Project

Select Language | Text-Size

Home About Project Updates Community Engagement **Contact** Search

Work With Us

Emergency Preparedness

[Work With Us](#)

Share Print

The East Side Coastal Resiliency (ESCR) project is a public investment that will help drive the City's economy and create jobs in New York City neighborhoods. As the ESCR project is launched, information on training, careers and contracting opportunities will be posted here. We encourage individuals and local M/WBE and Section 3 firms to review the opportunities and resources below, as well as the factsheet outlining the ESCR Subcontracting and Hiring Goals.

Our ESCR M/WBE and Section 3 representatives are available at [community board meetings](#) and project events to provide updates and respond to questions.

Submit an inquiry through our [Public Inquiry Tool](#).

[Have a question now?](#)

We are continually working to make our hiring events helpful and relevant to the community. Please take this [short survey](#) to help inform upcoming events.

[Take Survey](#)

Featured Announcements

Work With Us Virtual Quarterly Information Event: New Year, New Career: Tips to secure new opportunities

Thank you for joining the February 28, 2023 Virtual Quarterly Information Session. For those who were unable to attend, the presentation slides can be viewed below, and please stay tuned for the live recording. Thank you to all of our partners: Workforce1, Lower East Side Girls Club, LESEN, and Henry Street Settlement.

[Presentation](#)

Careers & Procurement

The ESCR project team is committed to working with M/WBE and Section 3 firms. As we onboard our contractors, we continue to assess workforce needs.

Subcontracting/Hiring Goals

Overview of ESCR Hiring Goals

Submit an inquiry through our [Public Inquiry Tool](#).

Work With Us Virtual Quarterly Information Event: New Year, New Career: Tips to secure new opportunities

February 28, 2023 5:00 PM to 6:00 PM



East Side Coastal Resiliency

The East Side Coastal Resiliency (ESCR) Project is a coastal protection initiative, jointly funded by the City of New York and the federal government, aimed at reducing flood risk due to coastal storms and sea level rise on Manhattan's East Side from East 25th Street to Montgomery Street. The boundaries of this project correspond with the natural "pinch-points" in the 100-year floodplain: areas where the land is higher along the coastline, making it easier to close the system off from water entering from the north and south. The project design integrates flood protection into the community fabric, improving waterfront open spaces and access, rather than walling off the neighborhood. Construction on the East Side Coastal Resiliency project will begin in Fall 2020 and continue through 2025.

 <p>Construction Progress</p>	 <p>Resiliency & Flood Protection</p>	 <p>Project Background & Goals</p>	 <p>Project Design</p>
<p>Construction Notices View our most recent community presentations for updates as we prepare for upcoming construction activities.</p>	<p>Resiliency and Flood Protection Learn more about ESCR's resiliency and the forward-thinking flood protection measures being implemented to protect 110,000 New Yorkers from the impacts of climate change.</p>	<p>Project Background and Goals Read about the history and background of ESCR, and the goals driving this technically complex infrastructure project.</p>	<p>Project Design From flood protection measures to bike lanes and ball fields, the ESCR project is improving open spaces and access in the Lower East Side while strengthening the city's coastline.</p>

NEED MORE INFORMATION?

VISIT US AT: www.nyc.gov/escr

