

# East Side Coastal Resiliency Construction Update

CB3 Parks Committee Meeting

Virtual Meeting

June 15, 2023



# Highlights

- Upcoming Career & Training Resource Fair
- Overview of Contracts
- PA1 Construction Progress
  - Fill Material
  - Updated Construction Phasing Approach
  - Archaeology
- PA2 Construction Progress
- PC Construction Progress



The NYC Department of Design and Construction is hosting a Construction Career and Resource Fair in partnership with the Brooklyn Borough President's Office.

A great opportunity to job search, network, and connect with employers from all backgrounds.

Meet employers, unions, and organizations with active opportunities!

Bring multiple copies of your résumé.

Come prepared to meet with representatives from various trades.

## Brooklyn Construction Career and Training Resource Fair

Open to the Public  
Monday, July 24, 2023  
11am – 4pm

Brooklyn Borough Hall  
209 Joralemon Street  
Brooklyn, NY 11201

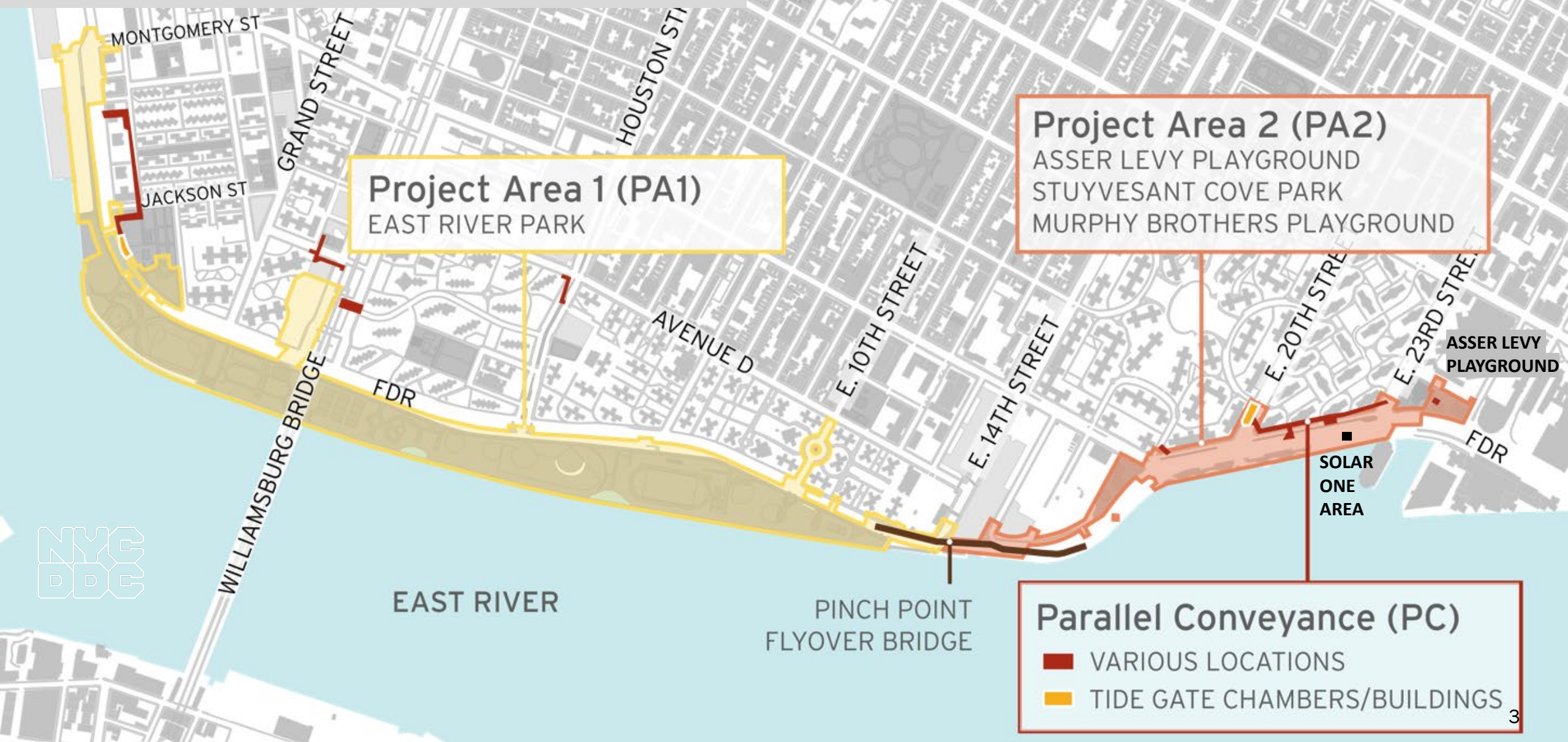


Scan for more information



<https://www.eventbrite.com/e/2023-brooklyn-construction-career-and-training-resource-fair-tickets-657621743337>

# PROJECT AREA OVERVIEW



# Overview of Contracts

## Project Area 1 (PA1)

- NTP issued August 2021
- Partial Closures:
  - East River Park south of Stanton St.
  - Greenway closure to E. 10<sup>th</sup> St.
  - Corlears Hook Park & passive lawn
- Delancey St. & Corlears Hook pedestrian bridges under construction. Use Corlears Hook temp. ped bridge
- ongoing ConEd Work
- esplanade removal and deep sewer work in progress. Wick drain install Phase 1 complete.
- floodwall construction activities ongoing
- O&M retaining wall in progress
- E. Houston St. retaining wall in progress

## Project Area 2 (PA2)

- NTP issued November 2020
- 1,600 ft of floodwall installed
- **Asser Levy Playground Open**
  - Gate 18 installed
- **Stuyvesant Cove Park** including Solar One Area under construction
  - Gates 10, 13, 14, 16, 17 installed
  - **North of E 20<sup>th</sup> St. – Open**  
Greenway open
  - site restoration & flood gate work in progress south of E 20<sup>th</sup> St. –  
Greenway closed
- **Murphy Brothers** flood protection construction in progress

## Parallel Conveyance (PC)

- NTP issued September 2022
- subsurface investigations in progress
- **water main replacement in progress**
- **to begin utility relocation**

### **VISIT PA1 GALLERY:**

<https://www.nyc.gov/site/escr/project-updates/gallery.page>

### **VISIT PA2 GALLERY:**

<https://www.nyc.gov/site/escr/project-updates/gallery.page>

# Project Area 1

# PA1 | Early 2023 Construction Activities

ALL WORK IS SUBJECT TO CHANGE

1. Esplanade removal activities along the waterfront.  
Deep sewer activities and pile install.  
Floodwall (Combi-wall) pre-drilling and installation.  
**Fill material delivery by barge.**
2. Delancey Street utility, pile and abutment work.
3. Construction for new Corlears Hook bridge.
4. Passive lawn partial closure for utility work.
5. Utility work near Montgomery Street & South Street.  
Begin floodwall construction in 2023.
6. Montgomery St. – Cherry St. Greenway floodwall activities.
7. E. Houston Street south ramp demolition
8. ConEd work in Shared Use Path E. Houston Street to E. 10th Street  
Slip Ramps in use.
9. E 10<sup>th</sup> Street utility work.
10. Ongoing partial FDR lane closures continue at various locations.

Weekly Bulletins & Advisories are issued with construction activities.  
Saturday work is anticipated for some work operations as indicated.



# PA1 | E. Houston Street Retaining Wall

ALL WORK IS SUBJECT TO CHANGE

In progress - ongoing until further notice

- Closure of the E. Houston St. south ramp, overpass south sidewalk, and a portion of the Greenway.
- North ramp opened for park access.
- Pedestrians to use Baruch Dr. crosswalk to access park
- Park amenities will not be impacted
- Please follow signage



# PA1 | Construction Photos



Delivery of fill material by barge – June 2023





# PA1 | Fill Material

- Schedule:
  - First delivery of fill was delivered last week via barge.
  - Additional loads will be delivered throughout the summer and into 2024.
  - There are no restrictions on work hours for fill activities.
- Quantity:
  - About 290,000 CY of fill material will be delivered as part of Phase 1.
  - Fill materials are not required to be covered overnight per NYCDEP requirements.
  - If air quality or stormwater concerns are encountered dust mitigation measures will be implemented.
  - Stormwater Pollution Prevention Plan (SWPPP) protective measures prevent soil materials from leaving the site: silt fence, hay bales, etc.

# PA1 | Fill Material

- Settlement and Compaction:
  - Rate is unknown. **Settlement** will be monitored and measured until the rate indicates negligible settlement. The wick drains help remove the pore water from soft compressible soils which aids in soil settlement.
  - As the fill is placed it is **compacted** in lifts by machinery until the specified compaction density is reached.
  - No chemicals are used as part of the settlement or compaction processes.
- Placement:
  - Fill will be distributed throughout the Phase 1 area, The deepest fill is towards Houston St. tapering to Montgomery Street.
  - Fill depth varies throughout the site.
  - Fill will be retained by the raised esplanade and other retaining walls.
  - The amphitheater seating will be constructed in conjunction with the placement of the fill
- Access:
  - SUP will be maintained for construction and emergency vehicles

# PA1 | Fill Material

- CAG Mtg July 1, 2021:  
[www.nyc.gov/assets/escr/downloads/pdf/20210701-ESCR-CAG-Meeting-11-FINAL.pdf](http://www.nyc.gov/assets/escr/downloads/pdf/20210701-ESCR-CAG-Meeting-11-FINAL.pdf)
- Origin of fill:
  - local NY, NYSDOT approved quarries
  - material will not be acquired from the NYC Clean Soil Bank at this time

## CAG LETTER 2 SOILS

### Fill material:

Unless otherwise approved by HNTB-LiRo, the Contractor shall import only fill material that meets one of the following environmental criteria.

1. Virgin quarried material
2. NYSDOT-spec Recycled concrete aggregate (RCA), from facilities permitted or registered by NYSDEC.
3. Material from a facility that possesses a current Beneficial Use Determination (BUD) from the NYSDEC that includes testing as required by the spec.
4. Material from any other site where testing results performed by the Engineer demonstrate that the material meets the lower of the Restricted Residential and Groundwater Protection SCOs set forth in NYSDEC 6 NYCRR Part 375 in accordance with procedures as per the spec.
5. Material from the New York City Office of Environmental Remediation Clean Soil Bank.

- Glass from recycling facilities that meets the requirements for Glass as approved by the Engineer.
- Fill and Backfill, as specified above may be used up to 3 ft from finished grade or the bottom of the horticultural fill layer, where specified on the Contract Drawings. The upper 3 ft of fill material (below the finished grade or horticultural fill layer) shall meet the requirements of the Select Granular Fill.
- Select Granular Fill shall be a natural, well graded sand and crushed stone or approved clean earth of low silt and clay content, free from bricks, blocks, excavated pavement materials and debris, stumps, roots and other organic matter, as well as ashes, oil and other perishable or foreign material.



# PA1 | Air Quality Monitors



# PA1 | Construction Approach Update

---

# Accomplishments 2022 - 2023

- Averaged 52% Open Space
- Removal of Corlears Hook & Delancey Street Pedestrian Bridges
- Construction of Corlears Hook Temporary Bridge
- 85% of Phase 1 Deep Sewer work completed
- 100% of Phase I and Phase II Stone Column work completed
- Maintained limited public access on Shared Use Path
- Ongoing coordination with Parks on material salvaging
- Maintained Corlears Hook Ferry Access
- Parks/EDC opened Pier 42 Deck

---

# Status

- The ESCR Program is on schedule to finish in 2026.
- The team continues to evaluate the schedule and available work areas to ensure timely completion while maintaining 42% Open Space access to the community.
- The updated phasing approach:
  - Maintains the two-phase approach, however for Phase I, the contractor is working north to south, instead of south to north as originally anticipated
  - This approach prioritizes higher risk and/or long duration operations
  - This prioritization reduces the likelihood of schedule slip
  - Opening dates for Phase I shift slightly, however the phasing realigns in Summer of 2024.

---

# ESCR Work Prioritization & Acceleration

\* October 2021, Preliminary Phasing was a guide to the approach. As work is progressing, there are opportunities to accelerate long duration operations to ensure timely construction completion.

## 1. PHASE I – WORK NORTH TO SOUTH - IN PROGRESS | Prioritization

- a) Why: To complete deep sewer utility work for fill operations to begin – period of fill settlement is unknown.
- b) How: Prioritizing Phase I northern work operations.
- c) Result: To complete work operations in parallel instead of linearly by completing southern work operations while fill to the north is settling.

## 2. PHASE II BALLFIELD #3 STONE COLUMN INSTALLATION & SEWER BYPASS - COMPLETED | Acceleration

- a) Why: To complete Phase I utility operations to not delay park openings. Complete stone column work for Phase I & Phase II.
- b) How: Temporary closure of Phase II Ballfield #3 to accelerate operations.
- c) Result: Minimized impact of Phase II work on Phase I.



# Summer 2022



Pier 42 Deck Completion (Parks/EDC Project)

Restored Area for Open Space

**SUMMER 2022** (October 2021 Preliminary Phasing)

FOR ILLUSTRATIVE PURPOSES ONLY SUBJECT TO CHANGE

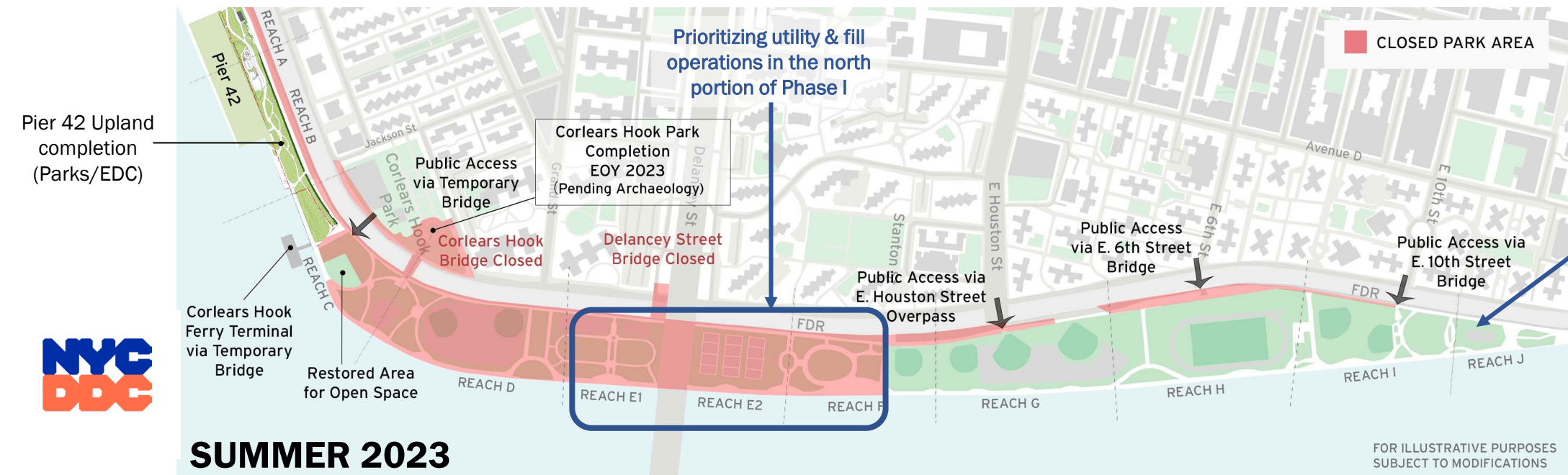
Pier 42 Deck (Parks/EDC)



**SUMMER 2022**

FOR ILLUSTRATIVE PURPOSES SUBJECT TO MODIFICATIONS

# Summer 2023



# Early Summer 2024

Pier 42 Deck Completion (Parks/EDC Project)



Pier 42 Deck & Upland Park complete



# Winter 2024

Pier 42 Deck Completion (Parks/EDC Project)



Pier 42 Deck & Upland Park complete



# Summer 2025

Pier 42 Deck Completion (Parks/EDC Project)



Pier 42 Deck & Upland Park complete



# Summer 2026

Pier 42 Deck Completion (Parks/EDC Project)



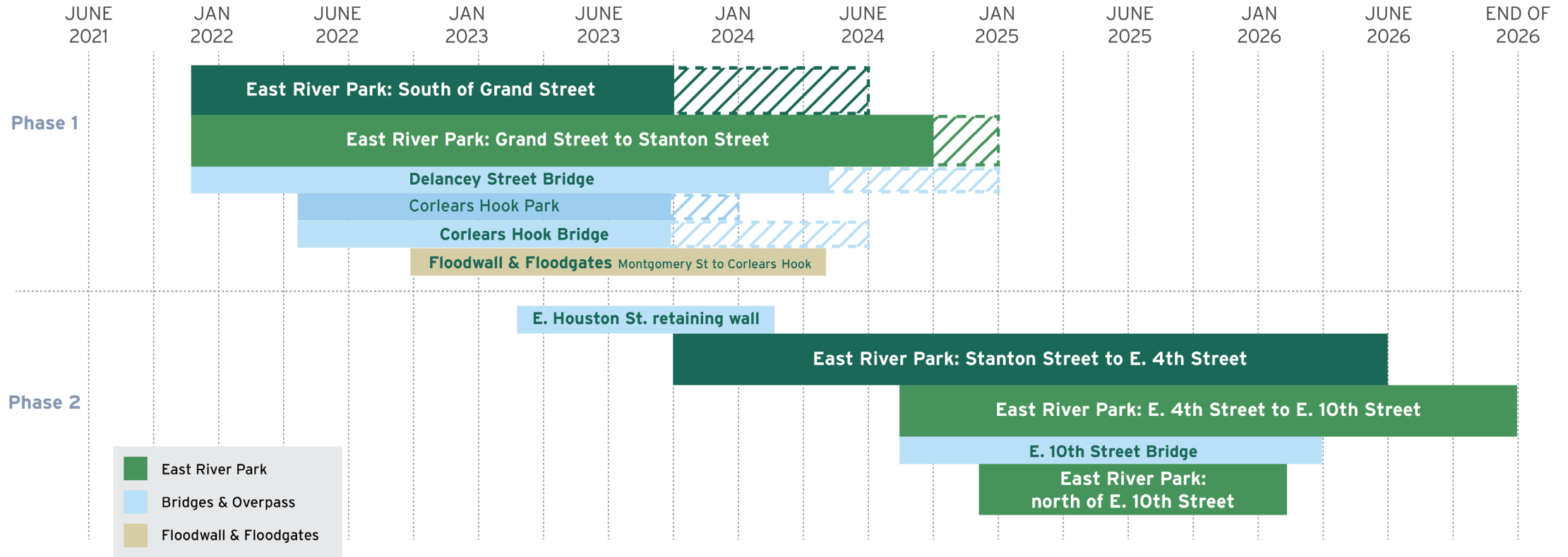
Pier 42 Deck & Upland Park complete



# Late 2026 | Project Completion



# PA1 | Updated Schedule



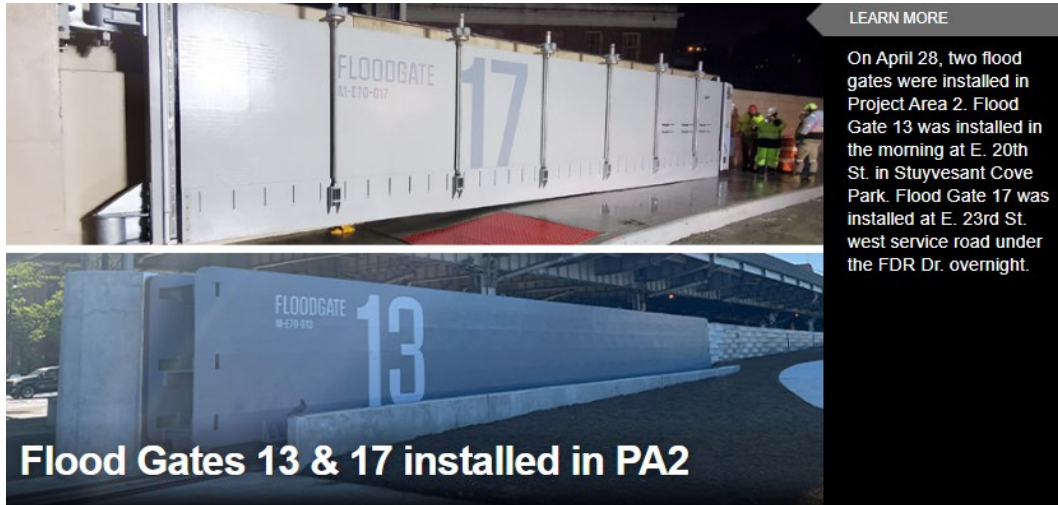


# PA1 | What We've Heard

## Archaeology Update:

- Field investigation work is complete.
- The Mitigation Work Plan (MWP) is under review by the consulting parties. Consulting parties have until the end of June to comment on the MWP. After the comment period, the city will finalize the MWP and share through the project website.
- For questions regarding archaeology or the MWP, please send through the ESCR Inquiry Tool.
- Construction can begin once the MWP is finalized and approved.

# Project Area 2



NYC Department of Design and Construction 311 Search all NYC.gov websites

Building for you

NYC Department of Design and Construction

Home About Work with DDC Projects MWBE Resources Careers Search

About DDC News Contact

Share Print

## Stuyvesant Cove Park Reopens with New Recreation Areas and Flood Protection for Surrounding Community

Rebuilt as Part of East Side Coastal Resiliency with New Floodwall and Flood Gates

DDC: Ian Michaels, 646-939-6514, [michaelia@ddc.nyc.gov](mailto:michaelia@ddc.nyc.gov)  
EDC: Adrien Lesser, 929-626-1753, [alessler@edc.com](mailto:alessler@edc.com)

(New York, NY – May 31, 2023) NYC Department of Design and Construction (DDC) Commissioner Thomas Foley and NYC Economic Development Corporation (NYCEDC) Executive Vice President and Chief Infrastructure Officer Josh Kraus joined elected officials and community leaders today to open the northern section of the new Stuyvesant Cove Park along the East River in Manhattan between East 20th Street and East 23rd Street. The remainder of the park, from East 18th Street to East 20th Street, will open later this summer.

# PA2 | Construction Progress

ALL WORK IS SUBJECT TO CHANGE

## Stuyvesant Cove Park

- Area #1 – **OPEN!**
- Area #2 – scheduled to reopen July 2023 – without plantings. Plantings will be completed Fall 2023.
- Greenway connecting to East River Park will remain closed until further notice due to a DOT project.

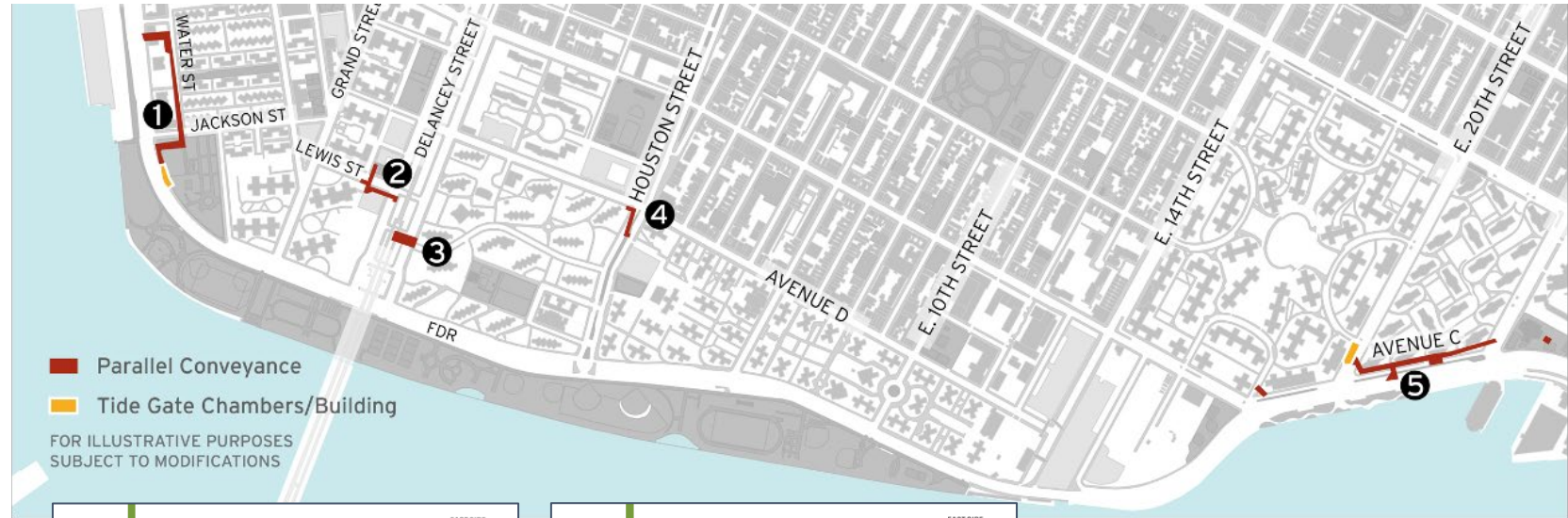


# Parallel Conveyance

# PC | Construction Progress

ALL WORK IS SUBJECT TO CHANGE

- Location 1 – Jackson St. & Water St.
  - Water main replacement on Water Street between Jackson and Gouverneur Slip E completed
  - Continuing water main replacement on Jackson St
  - About to begin utility relocation
  - Test Pits on South Street
- Location 2 – Lewis St. & Delancey St.
  - Test pit operations
- Location 3 – Baruch Dr. & Delancey St.
  - Test pit operations
- Location 4 – Houston & Avenue D
  - Test pit operations
- Location 5 – Avenue C, E20th to E23rd
  - No work at this time



**Community Advisory**

**Water Main Replacement**  
Starting May 23, 2023, for approximately three (3) weeks

- From 8:30am - 4:30pm
- Water St. between Jackson St. and Gouverneur Slip E.

These temporary water main shutdowns are necessary to facilitate the replacement of a 12" distribution water main pipe which will be replaced in sections along Water St. Official DEP notices with instructions will be provided to before any service interruptions. For your safety, please follow on-site signage and flaggers.

Questions? 有疑问? 問題?  
PC Community Construction Liaison (CCL) | Email: [tania.welton@nyc.gov](mailto:tania.welton@nyc.gov) | Phone: 914-313-6863  
Inquiries | Consulta en Linea | 線上諮詢: [www.nyc.gov/escc/contact](http://www.nyc.gov/escc/contact)

PLEASE NOTE: Due to unforeseen conditions, weather, field conditions, etc., it may become necessary to change some scheduled work locations and operations. During non-construction hours, emergency situations, please contact the New York City Government Services and Information Helpline at 311 (Universal Directory Number 911).

Department of Design and Construction  
Office of Community Outreach & Notification

NYC DOT NYC

**Community Advisory**

**Utility Relocation on Water St. between Jackson St. and Gouverneur Slip E.**  
Monday June 12, 2023, Ongoing until further Notice  
Work Hours 7:00 AM - 3:30 PM

No Parking restriction will remain in effect. Please follow all posted signs.

Questions? 有疑问? 問題?  
PC Community Construction Liaison (CCL) | Email: [sandrespcc@gmail.com](mailto:sandrespcc@gmail.com)  
Tania Welton, 914-313-6863  
Inquiries | Consulta en Linea | 線上諮詢: [www.nyc.gov/escc/contact](http://www.nyc.gov/escc/contact)

PLEASE NOTE: Due to unforeseen conditions, weather, field conditions, etc., it may become necessary to change some scheduled work locations and operations. During non-construction hours, emergency situations, please contact the New York City Government Services and Information Helpline at 311 (Universal Directory Number 911).

Department of Design and Construction  
Office of Community Outreach & Notification

NYC DOT NYC



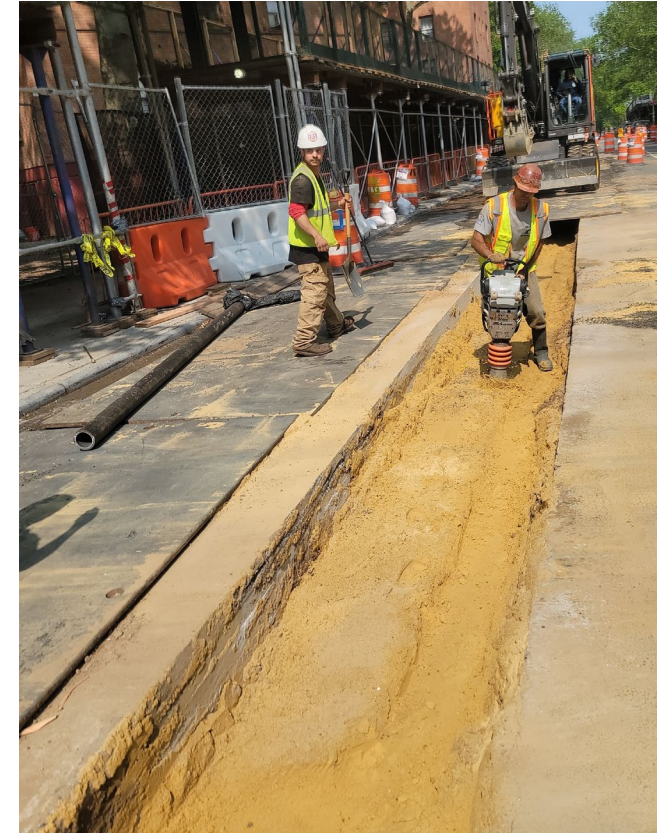
# PC | Construction Photos



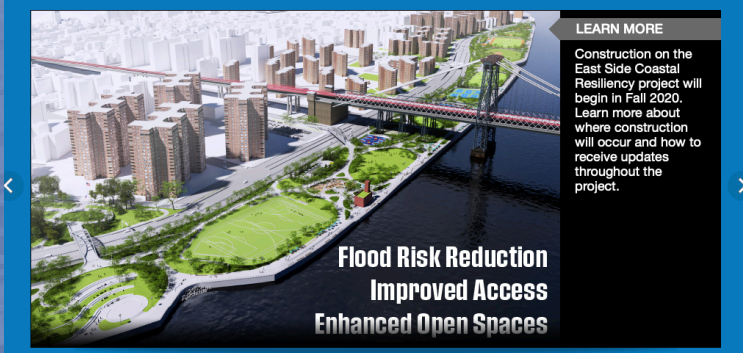
*Excavation for Water Main - May 2023*



*New 12" Distribution Water Main - May 2023*



*Backfilling After Water Main Installed - May 2023*



### East Side Coastal Resiliency

The East Side Coastal Resiliency (ESCR) Project is a coastal protection initiative, jointly funded by the City of New York and the federal government, aimed at reducing flood risk due to coastal storms and sea level rise on Manhattan's East Side from East 25th Street to Montgomery Street. The boundaries of this project correspond with the natural "pinch-points" in the 100-year floodplain: areas where the land is higher along the coastline, making it easier to close the system off from water entering from the north and south. The project design integrates flood protection into the community fabric, improving waterfront open spaces and access, rather than walling off the neighborhood. Construction on the East Side Coastal Resiliency project will begin in Fall 2020 and continue through 2025.

 <p><b>Construction Progress</b></p>	 <p><b>Resiliency &amp; Flood Protection</b></p>	 <p><b>Project Background &amp; Goals</b></p>	 <p><b>Project Design</b></p>
<p><b>Construction Notices</b> View our most recent community presentations for updates as we prepare for upcoming construction activities.</p>	<p><b>Resiliency and Flood Protection</b> Learn more about ESCR's resiliency and the forward-thinking flood protection measures being implemented to protect 110,000 New Yorkers from the impacts of climate change.</p>	<p><b>Project Background and Goals</b> Read about the history and background of ESCR, and the goals driving this technically complex infrastructure project.</p>	<p><b>Project Design</b> From flood protection measures to bike lanes and ball fields, the ESCR project is improving open spaces and access in the Lower East Side while strengthening the city's coastline.</p>

# NEED MORE INFORMATION?

## VISIT US AT: [www.nyc.gov/escr](http://www.nyc.gov/escr)



# Brooklyn Bridge-Montgomery Coastal Resilience Construction Update

## CB3 Parks Committee Meeting

### VIRTUAL MEETING

### June 15, 2023





# Highlights

- Project Status
- Esplanade Closure
- Community Resources

# BMCR | Project Status

ALL WORK IS SUBJECT TO CHANGE

## Current Activities

- Water Main upgrades
- Utility Relocation & Upgrades
- Floodwall construction

## Upcoming Activities

- Temporary construction fence installation – week of June 19
- Shared bike path (Greenway) alignment changes – week of June 19

## Coordination

- ESCR—PC and PA1 Construction, Utility Work Coordination
- Ongoing coordination with DOT and Parks to maintain safe, greenway access

**Construction Advisory**

Project # SANDTWORR | Borough: Manhattan | Date Issued: 06/07/2023

The Brooklyn Bridge – Montgomery Coastal Resilience (BMCR) Project is an initiative to provide long-term flood protection on the south side of Manhattan.

### Esplanade Closure: Market Slip to Pier 35

**Beginning June 19, 2023  
Ongoing until further notice**

To safely accommodate the reconstruction of the East River Esplanade and installation of the various flood protection systems, the contractor will extend the enclosed work zone under the FDR Drive from Market Slip to Pier 35.

A waterfront pathway will be maintained between Catherine Slip and Pier 35 with exits every block. Access to Pier 35 will be maintained throughout construction. Recreational amenities are available at Pier 42, which is accessible from South St. and Montgomery Street.

**Questions? ¿Preguntas? 问题?**  
BMCR Community Construction Liaison (CCL) | Email: [bmcr.ccl@gmail.com](mailto:bmcr.ccl@gmail.com)  
Marsha Guido, 347-538-4266

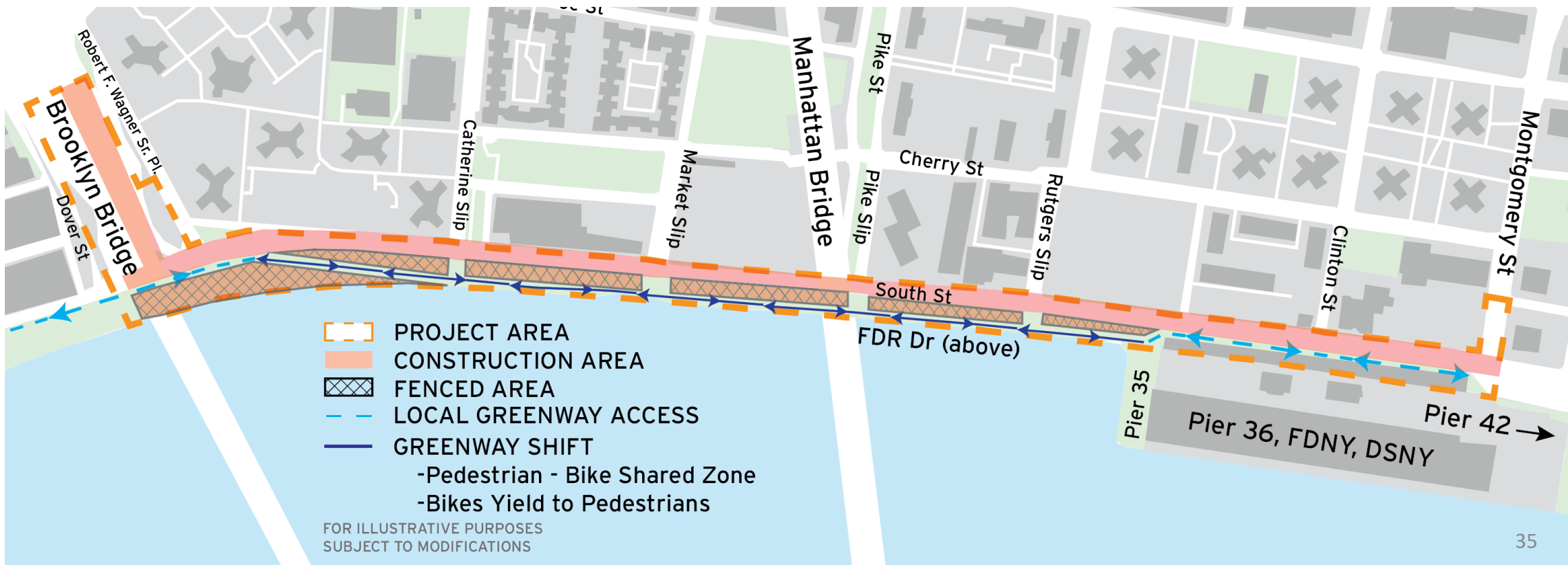
PLEASE NOTE: Due to unforeseen conditions (weather, field conditions, etc.) it may become necessary to change some scheduled work locations and operations. During non-construction hours or emergency situations, please contact the New York City Government Service and Information Hotline at 311 or Unusual Emergency Number 911.

NYC Department of Design and Construction | NYC EDC | NYC DOT

# BMCR | Esplanade Closure

ALL WORK IS SUBJECT TO CHANGE

- Week of June 19, 2023 – 2026 to facilitate reconstruction of esplanade and installation of flood protection
- Waterfront shared bike-pedestrian path will always be maintained with exits at every block
- Emergency vehicle access and access to Pier 35 will be maintained
- Pier 42 amenities include: basketball half courts, soccer field, tennis courts, and exercise equipment



# BMCR | Resources

- Visit Us:

<https://www.nyc.gov/bmcr>

- Community Construction Liaison:

- Marsha Guido

347-538-4266

Email: [bmcr.ccl@gmail.com](mailto:bmcr.ccl@gmail.com)

- Tabling in the Community

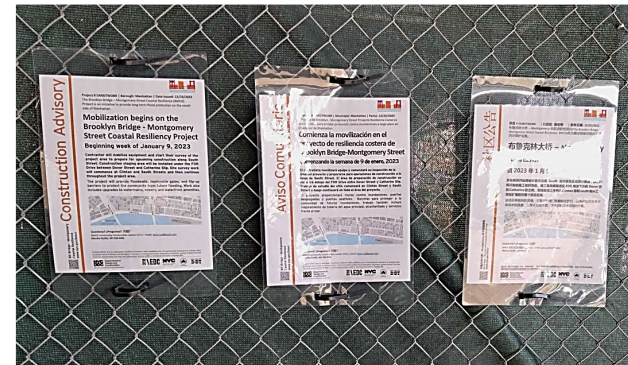
- CB 3 Parks Meetings

- On-site signage

- Inquiry tool (coming soon!)



Tabling event  
April 12, 2023



Advisories posted on-site

NYC Lower Manhattan Coastal Resiliency 311 Search all NYC.gov websites

NYC Lower Manhattan Coastal Resiliency [Русский](#) Select Language | Text-Size

Home Background Progress Resources Get Involved Search

## Brooklyn Bridge-Montgomery Coastal Resilience

[Brooklyn Bridge-Montgomery Coastal Resilience](#)

**The Battery Coastal Resilience**

**Interim Flood Protection Measure (IFPM)**

**Battery Park City Resilience Projects**

**The Financial District and Seaport Climate Resilience Master Plan**

**Seaport Coastal Resilience**

[f](#) [t](#) [e](#) [s](#) [Share](#)

[Print](#)



**Brooklyn Bridge - Montgomery Coastal Resilience**

In the Two Bridges neighborhood, the Department of Design and Construction (DDC) will install a combination of flood walls and deployable flip-up barriers to protect the neighborhood from a 100-year storm surge in the 2050s, while also maintaining access and visibility to the waterfront. New York City Economic Development Corporation (NYCEDC) led the design for the project, which will extend along the waterfront from the Brooklyn Bridge to Montgomery Street. EDC completed design in fall of 2021 and DDC is now managing the construction of BMCR.

This project will reduce flooding risk – from both sea level rise and storm surge – for thousands of residents, while continuing to preserve views and access to the waterfront. These deployable barriers will be permanent infrastructure, hidden until they are flipped up in the event of a storm. The location of the flood walls and posts has been designed to minimize conflict with subsurface infrastructure and to maximize integration of public space amenities such as open-air seating, fitness equipment, and athletic courts.

**Explore the headings below for more information about BMCR and the status of construction:**

Learn more about the NYCEDC design phase: [NYCEDC LMCR](#)

The same waterfront that the community enjoys when weather is good...




...transforms into critical flood protection during major flooding events.

**Learn More about BMCR**

- About
- Construction Notices
- Presentations
- Newsletters
- Gallery
- Community Engagement
- Contact
- FAQs

Are you looking for more information?

Visit Us at:  
<https://www.nyc.gov/bmcr>

