

East Side Coastal Resiliency Construction Update

CB6 Land Use Committee Meeting
Hybrid Meeting
November 27, 2023



Mayor's Office of
Resiliency

Highlights

- Communications & Community Programming
- Overview of Contracts
 - Project Area 1
 - Project Area 2
 - Parallel Conveyance
 - Flyover Bridge

Communications

- Project Website
 - Construction Notices
 - Environmental Monitoring
 - Presentations
 - Newsletters and Gallery
- Community Engagement
 - ESCR to YOUR School
 - CCLs
- Contact
 - Work With Us

The screenshots show the NYC Department of Design & Construction's website for the East Side Coastal Resiliency (ESCR) project. The top banner features the text "East Side Coastal Resiliency" and "ESCR to YOUR School" with a sub-note "Hosted by: NYC Department of Design & Construction". Below this, the website navigation includes "About", "Project Updates", "Community Engagement", and "Contact". The main content area is divided into sections like "Environmental Monitoring", "Project Elements", "Project Updates", and "Construction Project Areas for East Side Coastal Resiliency". The latter section includes a map of the East River area with labels for "Project Area 1 (PA1)", "Project Area 2 (PA2)", and "Parallel Conveyance (PC)".

- Sign Up! On the Contact Us page
- Invite us to TA meetings and for Tabling Events



This collage features several key communication materials:

- Community Advisory:** A vertical flyer titled "South Side Crosswalk Closure @ E 23rd St. under FDR Dr. Begins the week of June 14, 2021 for approx" with details on the closure and contact information.
- ESCR News:** A flyer titled "East Side Coastal Resiliency" providing updates on the project's progress and construction phases.
- Work With Us:** A flyer for a "Subcontracting and Local Hiring Virtual Information Session" on Wednesday, July 28, 2021, from 8:30am to 9:30am.
- Construction Bulletin:** Two versions of the bulletin, one for "PROJECT AREA 2 - Two Week Look Ahead" and another for "BOROUGH: MANHATTAN | DATE ISSUED: 07/30/21", detailing construction activities, work hours, and locations.



www.nyc.gov/escr

Community Programming and Work With Us Outreach

Recent Events:

September

- September 6 – Elected official PA1 walkthrough
- September 12 – Gouverneur Gardens tabling
- September 21 – E. Houston St. tabling
- September 21 – Resilience+ Expo

October

- October 2 – CAG PA1 walkthrough
- October 5 – Corlears Hook Park Tabling
- October 17 – NYCHA Wald tabling with WF1
- October 23 – Neighborhood Infrastructure Curbside Education (NICE) program PA2 visit
- October 29 – Friends of Corlears Hook Park Halloween trick or treating
- October 30 – NYCHA Riis tabling with WF1

November

- November 1 – Work With Us Quarterly In-person Information Session and Job Fair
- November 3 – NICE PA2 visit



EAST SIDE COASTAL RESILIENCY



Work With Us Quarterly In-person Information Session and Job Fair

Celebrate National Career Development Month with GOLES and the ESCR team

Wednesday, November 1, 2023
10:00 AM to 1:00 PM

Seeking a job in the construction or service industry?
Interested in specialized **training, pre-apprenticeship** opportunities and programs?
This is the event for you!
There will be representatives from the **construction industry, retail, food services** and more.

Location:
Henry Street Settlement
301 Henry Street

Pre-register now to receive event updates and submit your resume:
www.nyc.gov/escr/work

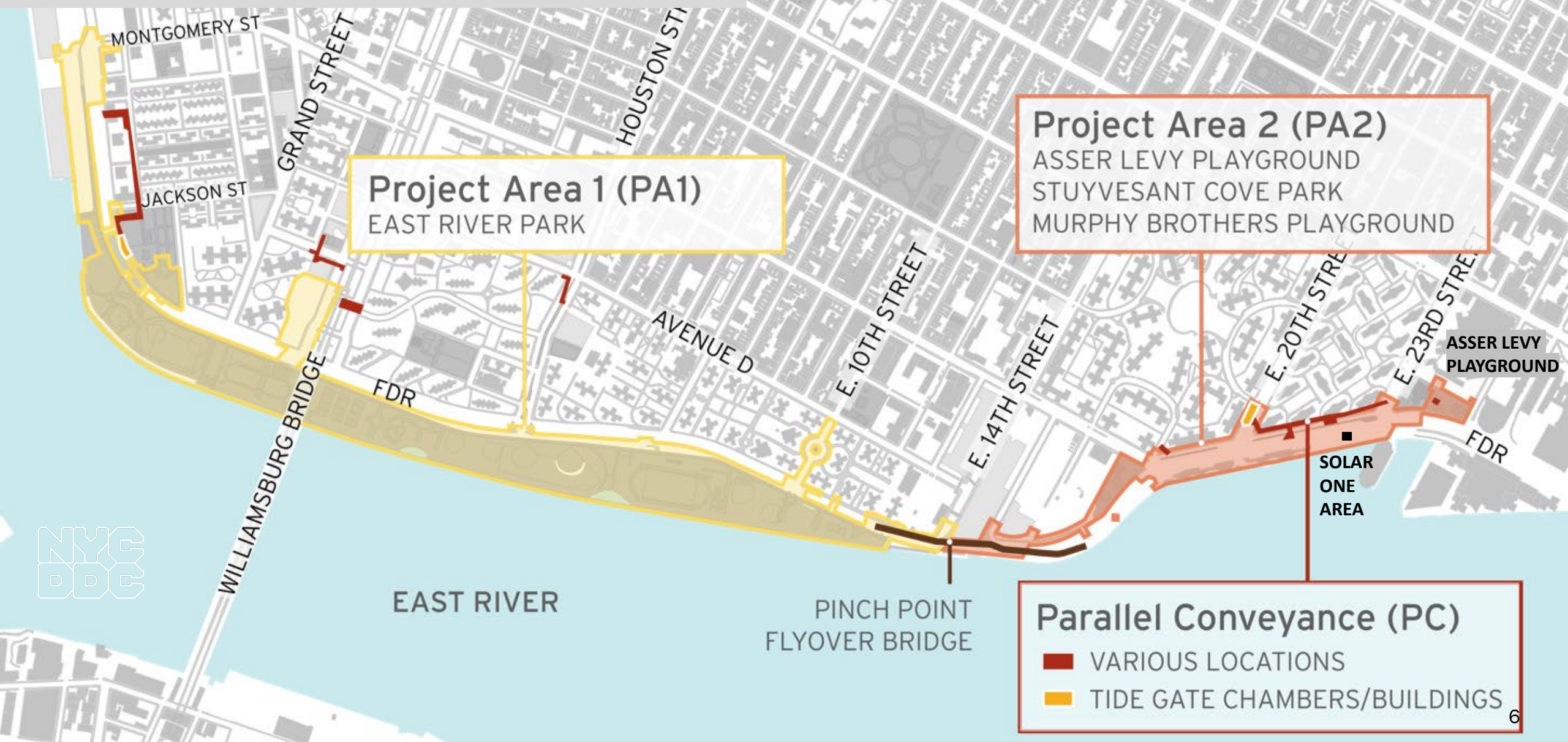




Overview of Contracts & Construction Updates

PROJECT AREA OVERVIEW



Overview of Contracts

Project Area 1 (PA1)

- NTP issued August 2021
- Partial Closures:
 - East River Park south of Stanton St.
 - Greenway closure to E. 10th St.
 - Corlears Hook Park & passive lawn
- Delancey St. & Corlears Hook pedestrian bridges under construction. Use Corlears Hook temp. ped bridge
- ongoing ConEd Work
- esplanade removal and utility work in progress
- floodwall & esplanade construction activities ongoing as well as fill operation via barge
- E. Houston St. retaining wall work
- **fields 1 & 2 construction in progress**

Project Area 2 (PA2)

- NTP issued November 2020
- over 2,600 ft of floodwall installed
- **Asser Levy Playground Open**
 - gate 18 installed
- **Stuyvesant Cove Park** including Solar One Area under construction
 - gates 9-17 installed
 - north of E 20th St. open
Greenway open
 - site restoration work in progress south of E 20th St. – Greenway closed
- **Murphy Brothers** under construction

Parallel Conveyance (PC)

- NTP issued September 2022
- subsurface investigations in progress
- water main replacement in progress
- utility relocation in progress

VISIT PA1 GALLERY:

<https://www.nyc.gov/site/escr/project-updates/pa1-gallery.page>

VISIT PA2 GALLERY:

<https://www.nyc.gov/site/escr/project-updates/pa2-gallery.page>

VISIT PC GALLERY:

<https://www.nyc.gov/site/escr/project-updates/pc-gallery.page>

Project Area 1

PA1 | 2023 Construction Activities

ALL WORK IS SUBJECT TO CHANGE

1. Esplanade removal activities along the waterfront.
Deep sewer activities/pile install and park drainage work.
Floodwall (Combi-wall) pre-drilling and installation.
Fill material delivery by barge and placement onsite.
Ballfields 1 and 2 construction
2. Delancey Street - pile install then footing excavation.
3. Construction for new Corlears Hook bridge.
4. Passive lawn partial closure for utility work. PAIR Art Installation.
5. Utility work around Montgomery Street & South Street.
Begin floodwall construction in 2023.
6. Montgomery St. – Cherry St. Greenway floodwall activities.
ConEd asbestos abatement work.
7. E. Houston Street test piles and future pile install. **Pedestrian Detour Shift.**
8. Slip Ramps in use.
9. E 10th Street utility work in preparation for deep sewer work.
10. Ongoing partial FDR lane closures continue at various locations.

Weekly Bulletins & Advisories are issued with construction activities.
Saturday work is anticipated for some work operations as indicated.

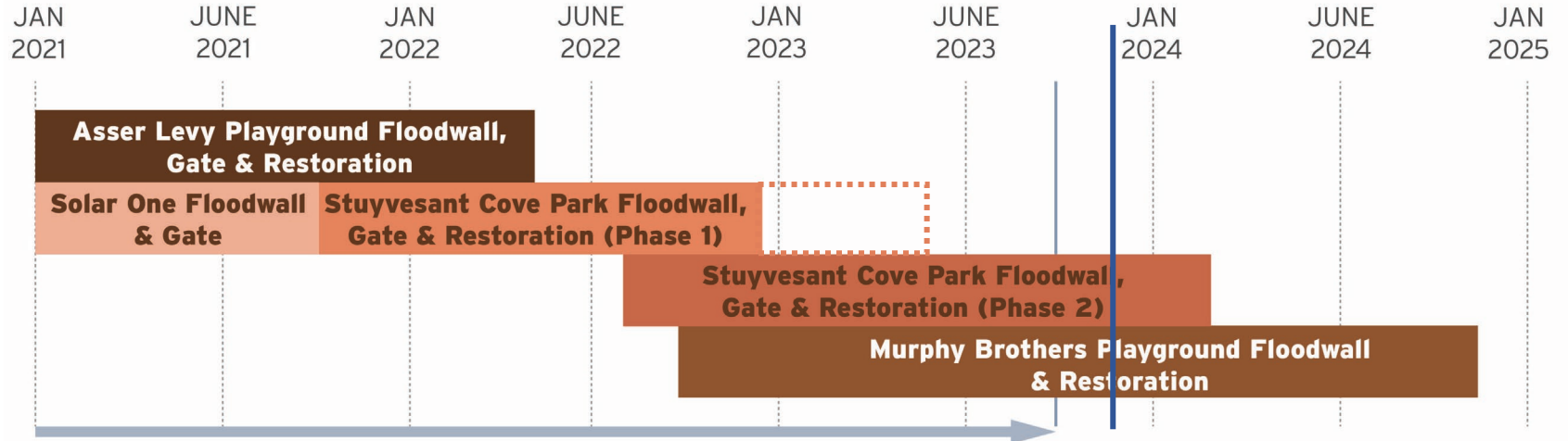


MOON WITH STAR INDICATES EVENING WORK SHIFTS

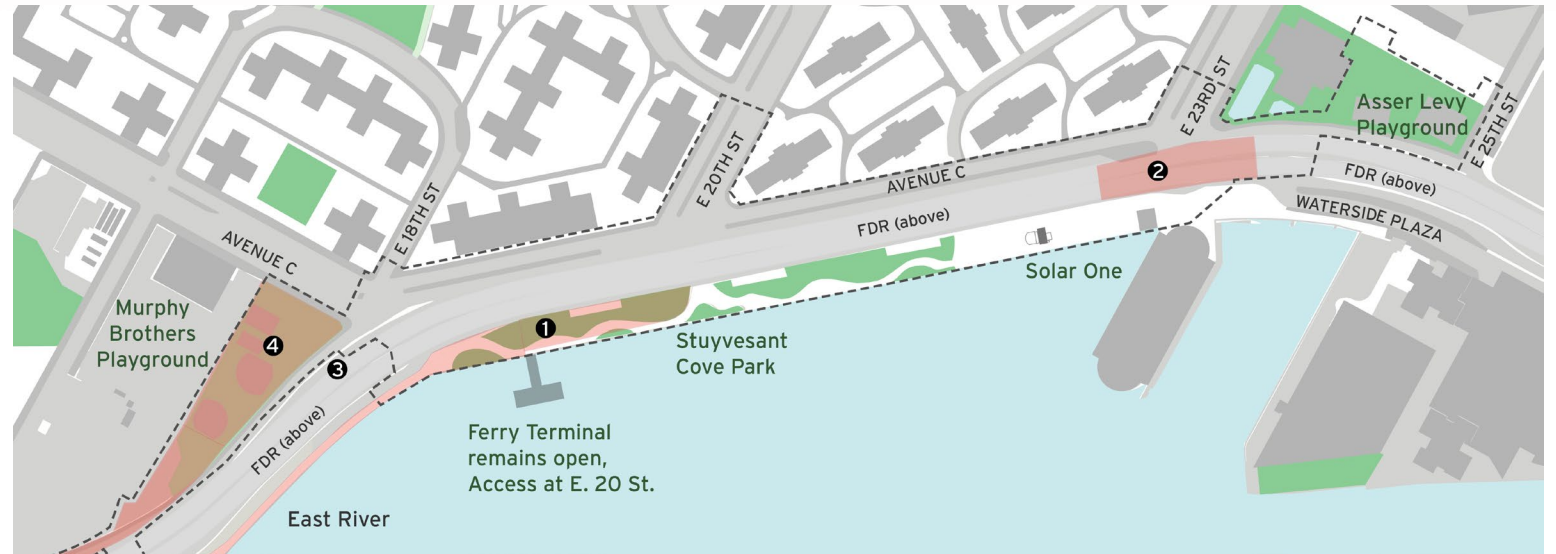
Project Area 2

PA2 | Construction Progress

ALL WORK IS SUBJECT TO CHANGE



Completion of Flood Walls and Gates in Project Area 2



PA2 | Construction Progress

- Gates 9, 10, 11, 12, 13, 14, 15, 16, 17 and 18 have been installed
- Gates 8, 9, are scheduled to be installed this year.



PA2 | Construction Progress

ALL WORK IS SUBJECT TO CHANGE

Stuyvesant Cove Park

- **Area #1 – OPEN!**
 - North entrance at E 23 St closed for EDC Solar One construction work.
 - Greenway remains open.
- **Area #2 – Ferry Access via E 20 St**
 - Greenway and Park south of E. 20th St. scheduled to reopen late 2023/early 2024.
- **Greenway** connecting to East River Park is expected to open late 2023 after sink holes are fixed.



PA2 | Construction Photos



Floodwall Construction near ConEd Facility - August 2023

PA2 | Construction Photos



Sidewalk Restoration at Gate 10 - August 2023



Stuyvesant Cove South Topsoil & Sea Rail Installation - August 2023

PA2 | Construction Photos



Preparation for Sidewalk Restoration at 18th Street (Murphy Brothers Playground Entrance) – November 2023

PA2 AQM | Monitoring Locations



PA2 | Bioswales

September/October 2023 response from Parks on ESCR ULURP Commitment # 11: DPR will install up to 1,000 trees and 40 bioswale/rain garden installations in Community Districts 3 and 6...”

- The bioswales have not yet been constructed.
- Bioswale locations will be selected as a subset of the tree locations based on soil permeability testing which will be conducted by the Parks contractor when the contract gets underway in early 2024.
- At this time, they can't provide a figure for the number of installations in CB6 vs CB3. It will depend on the results of the soil permeability testing.

Parallel Conveyance

PC | Typical Construction Sequencing

ALL WORK IS SUBJECT TO CHANGE



So far, construction activities have primarily been focused in the southern project areas.

LOCATIONS WITHOUT TIDE GATE CHAMBER BUILDINGS

- A. Mobilization & Protection
- B. Test Pits and Site Survey
- C. Utility relocation and upgrades
- D. Install parallel conveyance sewer lines
- E. Final restoration

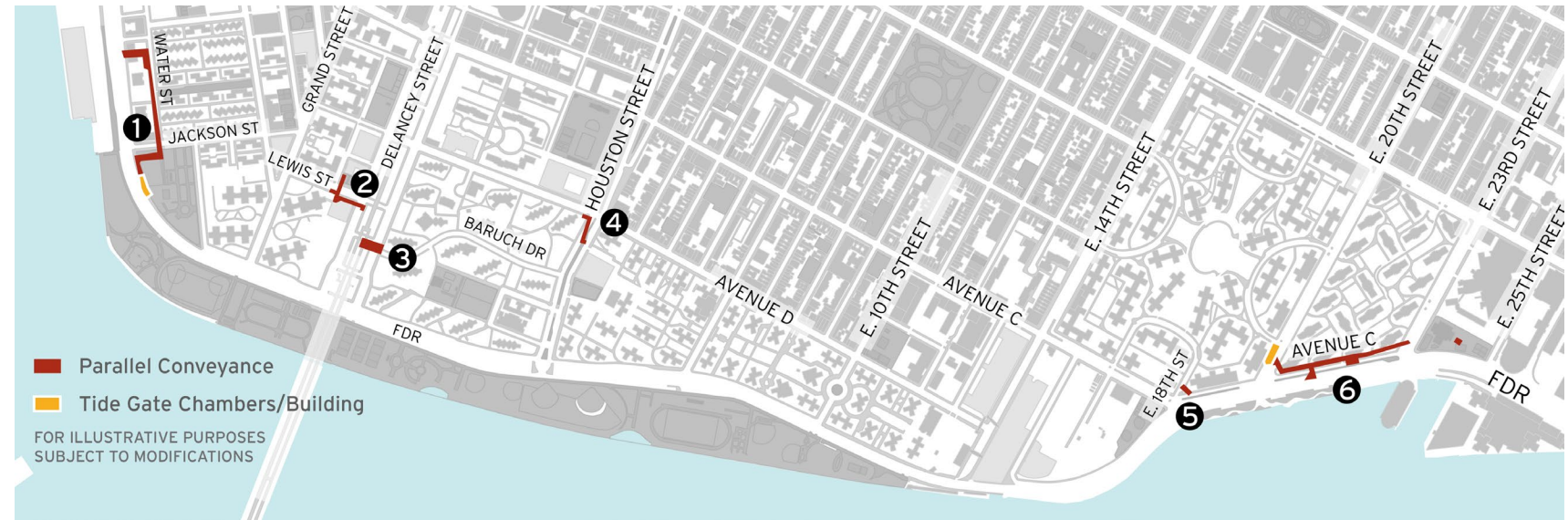
LOCATIONS WITH INTERCEPTOR GATE CHAMBER BUILDINGS

- A. Mobilization & Protection
- B. Test Pits and Site Survey
- C. Utility relocation and upgrades
- D. Excavation for Interceptor Gate Chambers
- E. Install parallel conveyance sewer lines
- F. Construction of Interceptor Gate Buildings
- G. Final restoration

PC | Construction Progress

ALL WORK IS SUBJECT TO CHANGE

- Location 1 – Jackson St. & Water St.
 - Jackson St.:
Water main installation and utility relocation
 - Water St.:
Water main installation and utility relocation
 - South St.:
Utility relocation
- Location 2 – Lewis St. & Delancey St.
 - Water main installation and utility relocation
- Location 3 – Baruch Dr. & Delancey St.
 - Water main installation and utility relocation
- Location 4 – Houston & Avenue D
 - Test pits
 - Water main installation and utility relocation

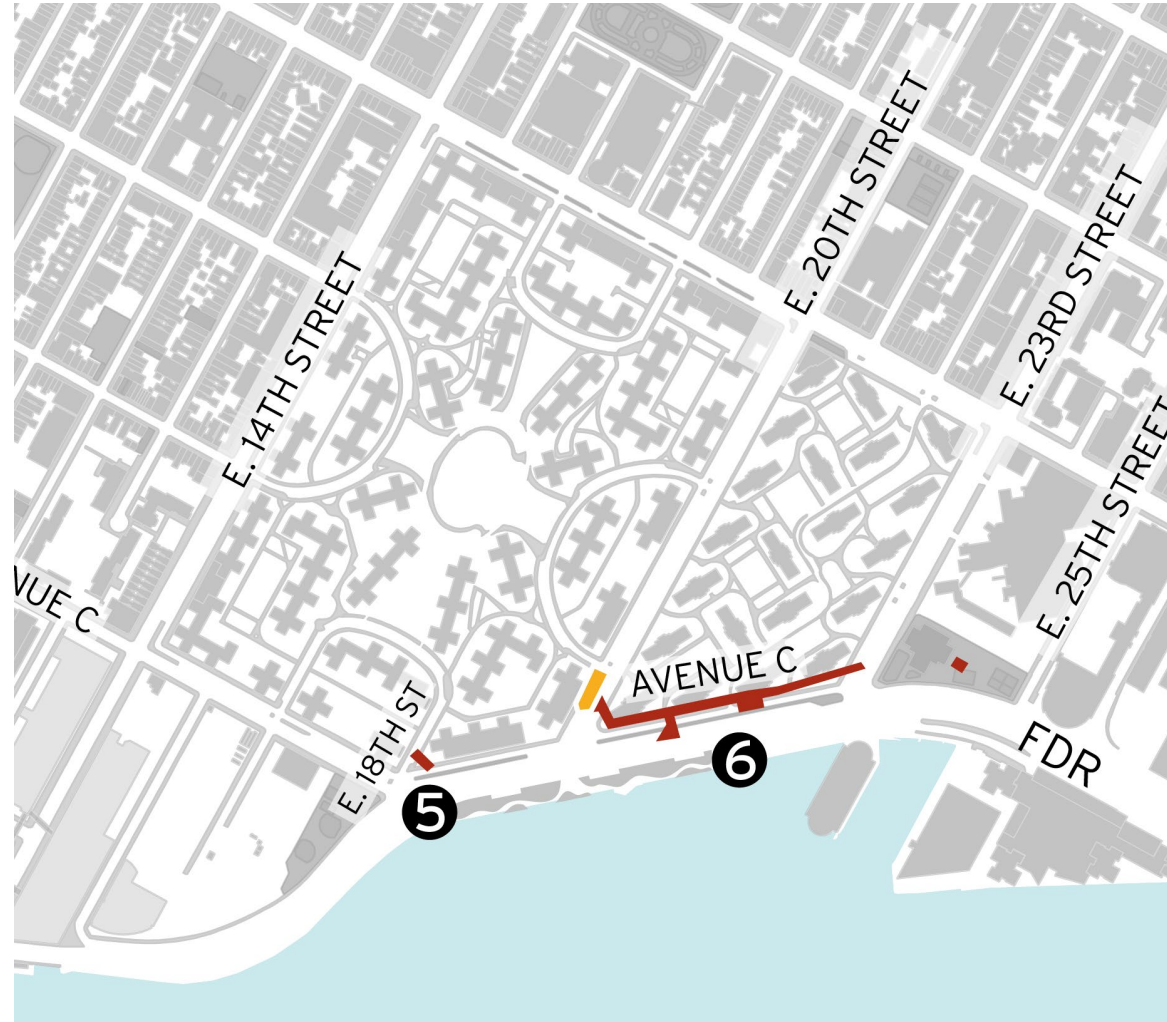


- Location 5 – Avenue C and E18th
 - Test pits
- Location 6 – Avenue C, E20th to E23rd
 - Test pits
 - Clearing and grubbing

PC | Upcoming Construction Activities E18th St. E23rd St.

ALL WORK IS SUBJECT TO CHANGE

- **Test Pits – In Progress**
 - Typical impacts include limited street parking and temporary traffic pattern changes
- **Water Main Upgrades – Starting October 2024**
 - Typical impacts include temporary loss of water service, limited street parking, and temporary traffic pattern changes
 - Advanced notification will be provided to all affected buildings' management
- **Utility Relocation – Starting October 2024**
 - Typical impacts include limited street parking and temporary traffic pattern changes



Flyover Bridge “Pinch Point”

- NYCDDC is still working on alignment with city partners and ConEd.



East Side Coastal Resiliency

The East Side Coastal Resiliency (ESCR) Project is a coastal protection initiative, jointly funded by the City of New York and the federal government, aimed at reducing flood risk due to coastal storms and sea level rise on Manhattan's East Side from East 25th Street to Montgomery Street. The boundaries of this project correspond with the natural "pinch-points" in the 100-year floodplain: areas where the land is higher along the coastline, making it easier to close the system off from water entering from the north and south. The project design integrates flood protection into the community fabric, improving waterfront open spaces and access, rather than walling off the neighborhood. Construction on the East Side Coastal Resiliency project will begin in Fall 2020 and continue through 2025.

 Construction Progress	 Resiliency & Flood Protection	 Project Background & Goals	 Project Design
Construction Notices View our most recent community presentations for updates as we prepare for upcoming construction activities.	Resiliency and Flood Protection Learn more about ESCR's resiliency and the forward-thinking flood protection measures being implemented to protect 110,000 New Yorkers from the impacts of climate change.	Project Background and Goals Read about the history and background of ESCR, and the goals driving this technically complex infrastructure project.	Project Design From flood protection measures to bike lanes and ball fields, the ESCR project is improving open spaces and access in the Lower East Side while strengthening the city's coastline.

NEED MORE INFORMATION?

VISIT US AT: www.nyc.gov/escr

