

# East Side Coastal Resiliency Construction Update

CB3 Parks Committee Meeting  
University Settlement – Speyer Hall  
184 Eldridge Street  
December 13, 2023



# Highlights

- Employment Resources
- Overview of Contracts
  - PA1 Construction Progress
  - What We've Heard
  - PA2 Construction Progress
  - PC Construction Progress

# Employment Resources

**WORKFORCE DEVELOPMENT PROGRAMS**

**HENRY STREET SETTLEMENT**  
Employment Services

## JOB FAIR 2023

**\$17-30+ HOURLY**

Make sure to bring your resume!

**DATE**  
Thursday, December 14

**TIME**  
10:00 AM - 1:00 PM

**301 Henry Street  
New York, NY, 10002**

**RSVP HERE**  
or at:  
[tinyurl.com/Dec14JobFair](https://tinyurl.com/Dec14JobFair)

**HENRY STREET SETTLEMENT**  
Office Manager  
Client Care Worker  
Youth Program Assistant  
Resident Assistant  
Education Specialist  
Part Time & Full Time

**TTC TOTAL TRANSPORTATION CORP.**  
Driver  
Dispatcher  
Foreman  
Diesel Mechanic  
General Manager  
Full Time

**1199SEIU**  
United Healthcare Workers East  
Housekeeping  
Food/Dietary Service  
Maintenance  
Clerical Worker  
Part Time & Full Time

**THE BRIDGE**  
Assistant Program Director  
Engagement Specialist  
Case Manager  
Maintenance  
Part Time & Full Time

**GoodTemps**  
Temporary Positions  
Part Time & Full Time

**& EVEN MORE EMPLOYERS!**

FUNDING PROVIDED BY  
**NYC** Department of Youth & Community Development

**HENRY STREET SETTLEMENT**

## WORK, LEARN & GROW

**YOUR BUSINESS NEEDS YOUTH INTERNS!**

**SCAN ME**

Wages for all interns are covered by Henry Street's contract with the Department of Youth and Community Development (DYCD)

- Internships will operate from January 2 through April 13
- Interns can work up to 12 hours each week, including on weekends
- During school breaks youth can work up to 20 hours per week

**CONTACT US TODAY FOR MORE INFORMATION!**

For more info contact:  
Yulissa Balbuena  
[YBalbuena@henrystreet.org](mailto:YBalbuena@henrystreet.org)  
929-638-1139

The Work, Learn & Grow Employment Program offers young people ages 16 to 20 from select public schools in New York City an opportunity to strengthen work-readiness skills, explore careers, and receive academic support, including guidance on postsecondary education and the potential to earn college credit.

The NYC Department of Design and Construction is hosting a Construction Career and Resource Fair in partnership with the Queens Borough President's Office.

## Queens Construction Career and Training Resource Fair

A great opportunity to job search, network, and connect with employers from all backgrounds.

Meet employers, unions, and organizations with active opportunities!

Bring multiple copies of your resume.

Come prepared to meet with representatives from various trades.

Open to the Public  
Thursday, February 1, 2024  
11am - 4pm

Queens Borough Hall  
Helen Marshall Atrium  
120-55 Queens Blvd  
Queens, NY 11424

Job Seeker

Scan for more information

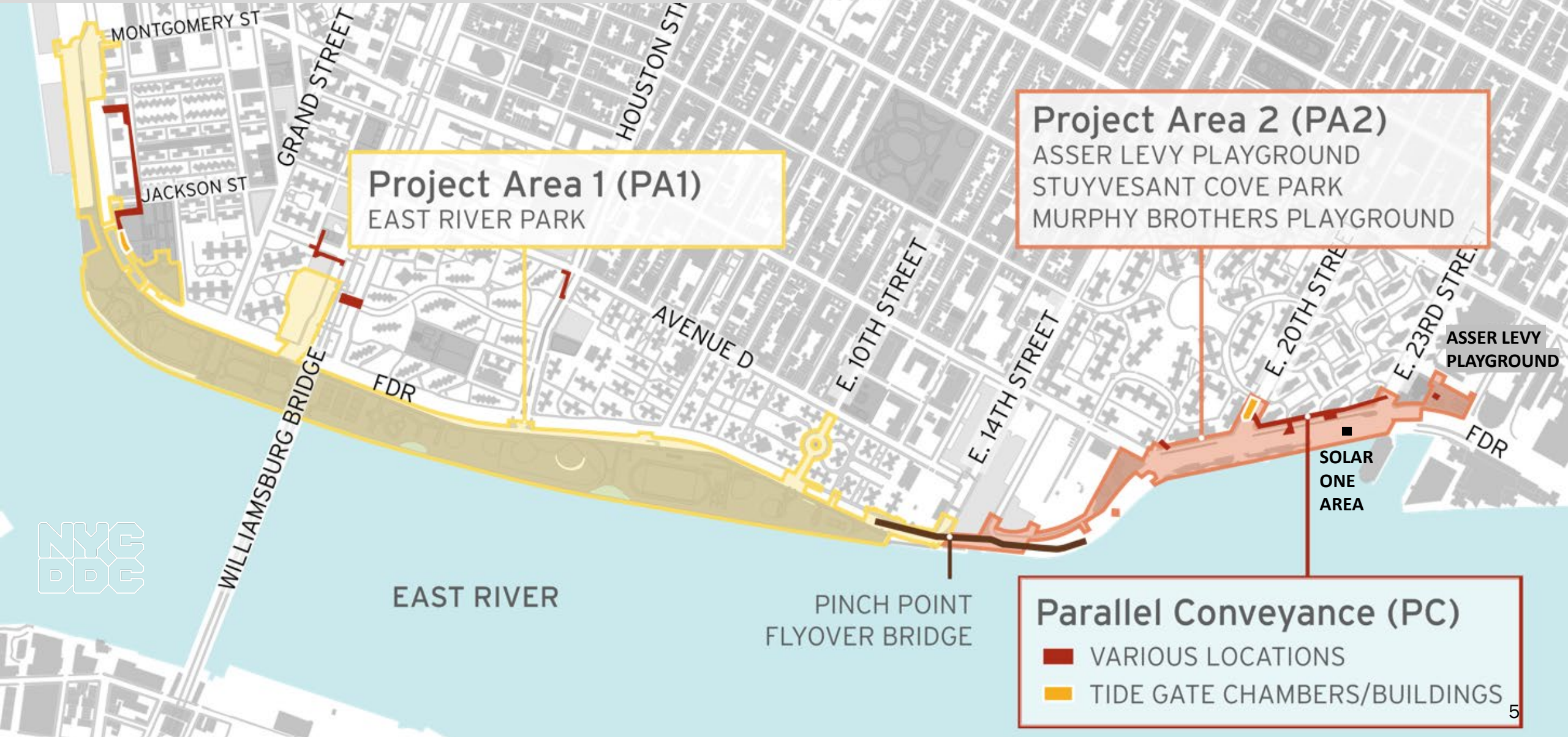
Donovan Richards Jr.  
QUEENS BOROUGH PRESIDENT

**NYC DDC**

---

# Overview of Contracts & Construction Updates

# PROJECT AREA OVERVIEW



# Overview of Contracts

## **Project Area 1 (PA1)**

- NTP issued August 2021
- Partial Closures:
  - East River Park south of Stanton St.
  - Greenway closure to E. 10<sup>th</sup> St.
  - Corlears Hook Park & passive lawn
- Delancey St. & Corlears Hook pedestrian bridges under construction. Use Corlears Hook temp. ped bridge
- ongoing ConEd Work
- esplanade removal and utility work in progress
- floodwall & esplanade construction activities ongoing as well as fill operation via barge
- E. Houston St. retaining wall work
- **fields 1 & 2 construction in progress**

## **Project Area 2 (PA2)**

- NTP issued November 2020
- over 2,600 ft of floodwall installed
- **Asser Levy Playground Open**
  - gate 18 installed
- **Stuyvesant Cove Park** including Solar One Area under construction
  - gates 9, 10, 11, 12, 13, 14, 15, 16, 17 installed
  - north of E 20<sup>th</sup> St. – Open Greenway open
  - site restoration & flood gate work in progress south of E 20<sup>th</sup> St. – Greenway closed
- **Murphy Brothers** under construction

## **Parallel Conveyance (PC)**

- NTP issued September 2022
- subsurface investigations in progress
- water main replacement in progress
- utility relocation in progress

### **VISIT PA1 GALLERY:**

<https://www.nyc.gov/site/escr/project-updates/pa1-gallery.page>

### **VISIT PA2 GALLERY:**

<https://www.nyc.gov/site/escr/project-updates/pa2-gallery.page>

### **VISIT PC GALLERY:**

<https://www.nyc.gov/site/escr/project-updates/pc-gallery.page>

---

# Project Area 1

# PA1 | 2023 Construction Activities

ALL WORK IS SUBJECT TO CHANGE

1. Esplanade removal and **reconstruction** activities along the waterfront. Deep sewer activities/pile install and park drainage work. Floodwall (Combi-wall) pre-drilling and installation. Fill material delivery by barge and placement onsite.  
**Ballfields 1 and 2 construction**
2. Delancey Street - pile install and pier construction.
3. Construction for new Corlears Hook bridge.
4. Passive lawn partial closure for **esplanade work**.  
**February 2024 full closure for Delancey St. bridge staging.**
5. Utility work around Montgomery Street & South Street.  
Begin floodwall construction in 2024.

6. Montgomery St. – Cherry St. Greenway floodwall activities.
7. E. Houston Street pile install. Pedestrian Detour Shift.
8. Slip Ramps in use.
9. E 10<sup>th</sup> Street utility work and deep sewer work.
10. Ongoing partial FDR lane closures continue at various locations.

Weekly Bulletins & Advisories are issued with construction activities. Saturday work is anticipated for some work operations as indicated.



MOON STAR  
INDICATES  
EVENING WORK  
SHIFTS



# PA1 | Transition into Phase 2



In response to feedback from local stakeholders and elected officials, plans to begin work on the full phase 2 esplanade have been reevaluated.

Instead, the contractor will begin the transition from Phase 1 to Phase 2 while maintaining 42% open space for park users.

This work balances the needs of field & esplanade users and will begin winter 2023/24 when park use is not at peak instead of during summer 2024, when park use is at peak.

# PA1 | Transition into Phase 2

## SUBJECT TO CHANGE

Winter 2023/2024

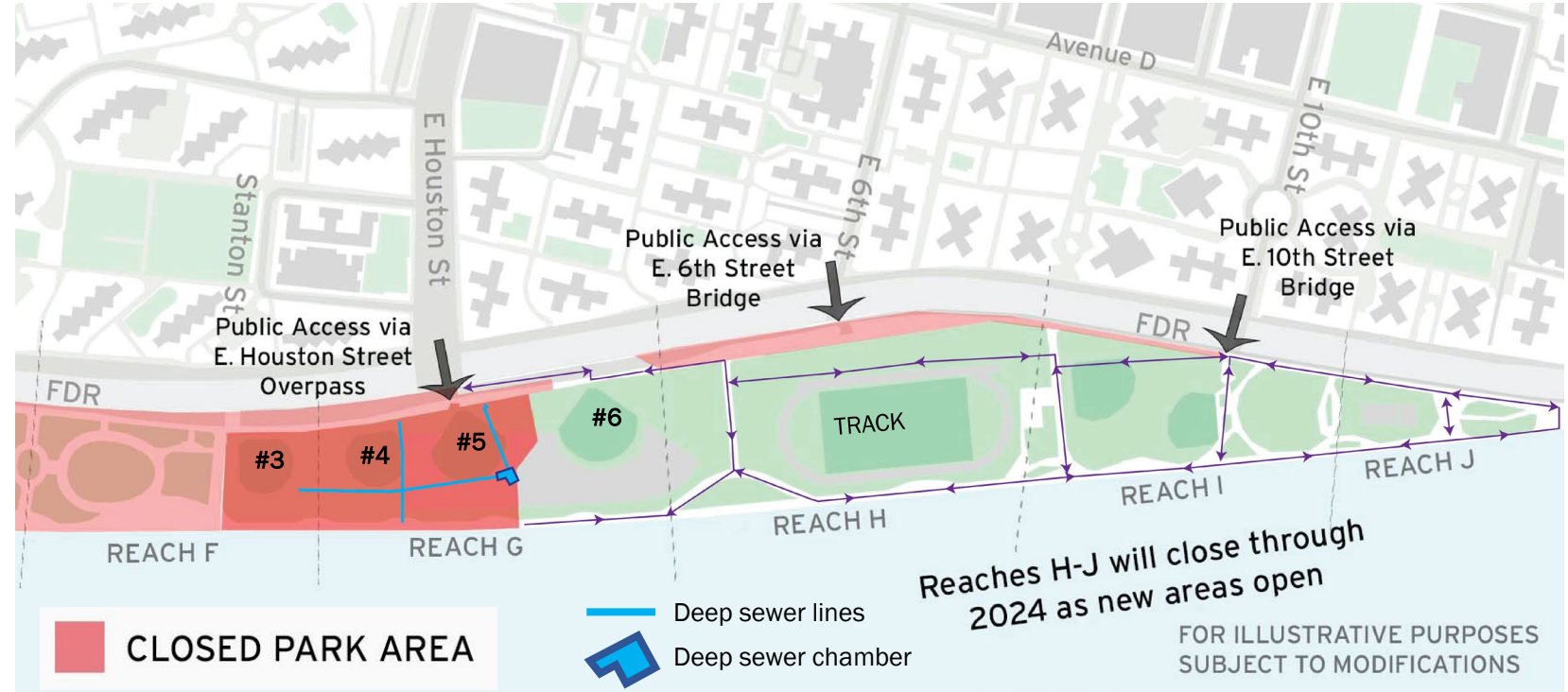
- Closure of ballfields #3 - 5 and esplanade in Reach G, after fall sports season ends.

### Benefits

- Majority of Phase 2 esplanade remains open.
- Contractor can perform critical sewer work in ballfield 5 while Phase 1 fill settles.

### Open Space Commitment

- Contractor will continue to maintain 42% open space.
- To date, contractor has successfully managed to limit the impact to park so that 52%+ of the park has remained open.
- **Ballfield #6** will remain open until additional Phase I areas reopen.
- The team continues to work with Parks to review pedestrian circulation and amenity availability throughout the park.
- Parks is working with DOE on alternate field availability.



- Access** | Access via E. Houston St., E. 6th St., and E. 10th St. will be maintained.
- Pier 42** | Pier 42 upland park is scheduled to open Early 2024.

# PA1 | Transition into Phase 2

SUBJECT TO CHANGE



Pier 42 Deck & Upland Park complete

Corlears Hook Ferry Terminal via Temporary Bridge

Ballfields 1 & 2 scheduled to open late spring 2024 – access will be provided.

Ballfields & section of esplanade to close December 2023.



# PA1 | Transition into Phase 2 – Open Space

**SUBJECT TO CHANGE**



<b>Current</b>		
Open Space	22.1 acres	<b>55%</b>
Closed	18.1 acres	45%



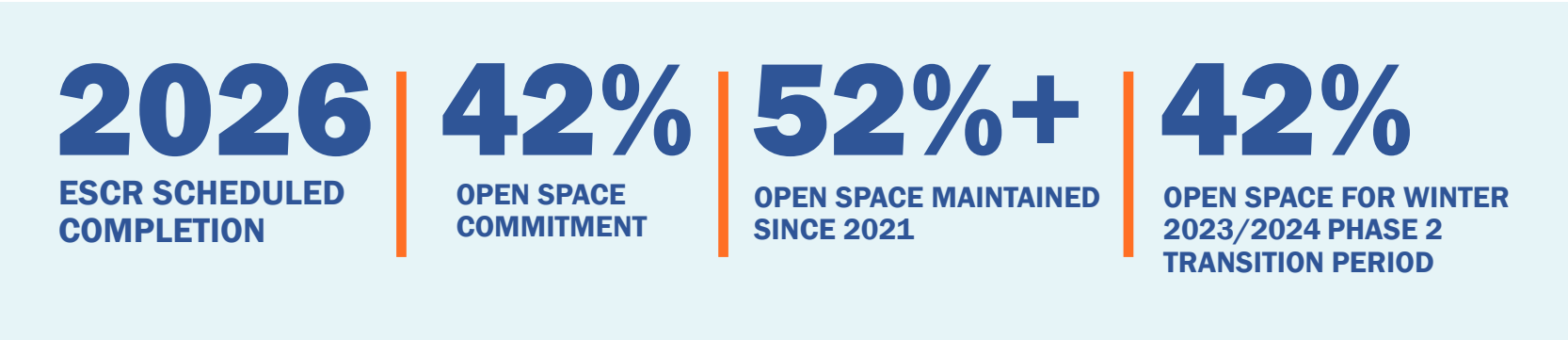
<b>Transition to Ballfields 3,4,5</b>		
Open Space	17.0 acres	<b>42.3%</b>
Closed	23.2 acres	57.7%



<b>Transition to Ballfields 3,4,5 with 1 &amp; 2 open</b>		
Open Space	19.9 acres	<b>49.5%</b>
Closed	20.3 acres	50.5%



# PA1 | Transition into Phase 2



- ❑ EARLY 2024 | ANTICIPATED OPENING OF PIER 42 UPLAND
- ❑ LATE SPRING 2024 | SCHEDULED OPENING OF CORLEARS HOOK PARK CHERRY HILL & FLAGPOLE AREA
- ❑ LATE SPRING 2024 | SCHEDULED OPENING OF BALLFIELDS 1 & 2 IN PHASE 1
- ❑ SUMMER 2024 | ORIGINAL START OF TRANSITION INTO PHASE 2

# PA1 | Fields 1 and 2 - Rendering



Final PDC Presentation: <https://www.nyc.gov/assets/escr/downloads/pdf/DDC-f-ESCR-pres-rev-final-given-to-PDC-2020-01-30.pdf>

# PA1 | Fields 1 and 2 - Construction Photos



*Ballfields 1 and 2 Construction - December 2023*

# PA1 | Construction Photos – Esplanade Reconstruction



*Placement of precast esplanade pieces by crane from barge - December 2023*



# PA1 | Construction Photos – Esplanade Reconstruction



*Placement of precast esplanade pieces - December 2023*

# PA1 | What We've Heard

- **South Street / Montgomery Street Intersection:** site visit with NYC DOT and DDC was held 12/12/2023. Additional 'pictorial' signage to be added by ESCR project teams. Meetings to follow up on other items will occur end of 2023 / beginning of 2024.
- **Archaeology:** Final archaeological report expected by the end of 2024/early 2025. Signage designs will be presented to Manhattan CB3 in 2025 and subject to Public Design Commission review.

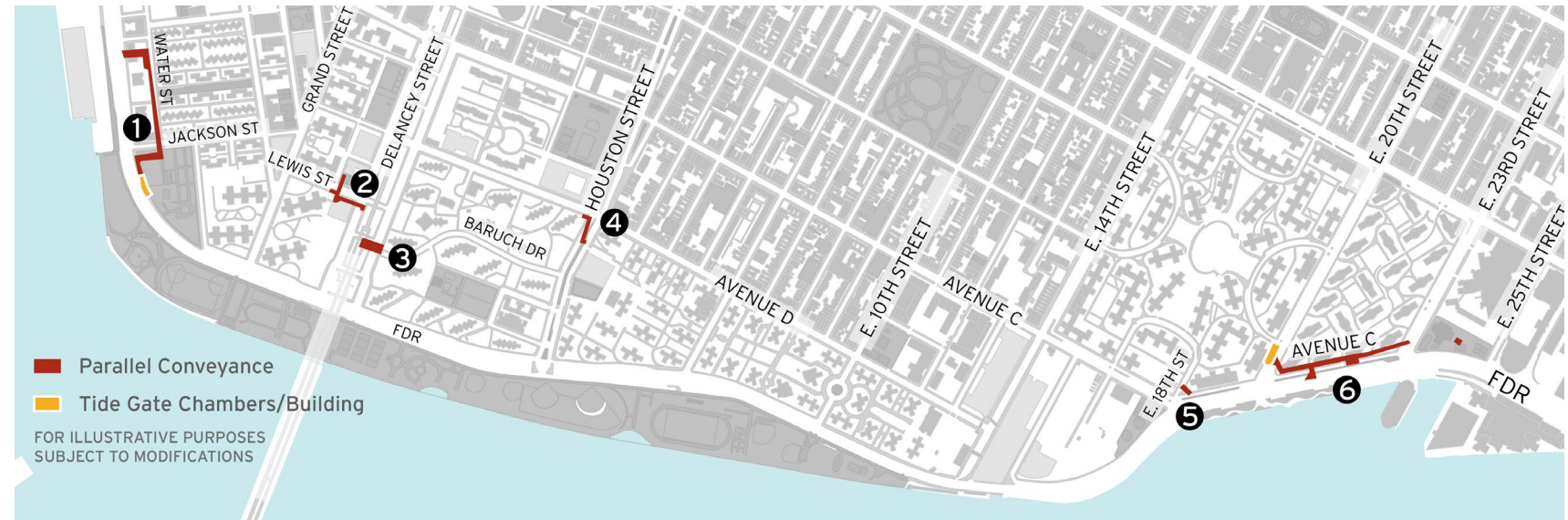
---

# Parallel Conveyance

# PC | Construction Progress

ALL WORK IS SUBJECT TO CHANGE

- Location 1 – Jackson St. & Water St.
  - Utility relocation
- Location 2 – Lewis St. & Delancey St.
  - Utility relocation
  - Water main upgrades
- Location 3 – Baruch Dr. & Delancey St.
  - Utility relocation
  - Water main upgrades
- Location 4 – Houston & Avenue D
  - Utility relocation
- Location 5 – Avenue C and E18th
  - Test pits
- Location 6 – Avenue C, E23rd to E25th
  - Test pits



# PC | Construction Sequencing

ALL WORK IS SUBJECT TO CHANGE



## LOCATIONS WITH INTERCEPTOR GATE CHAMBER BUILDINGS

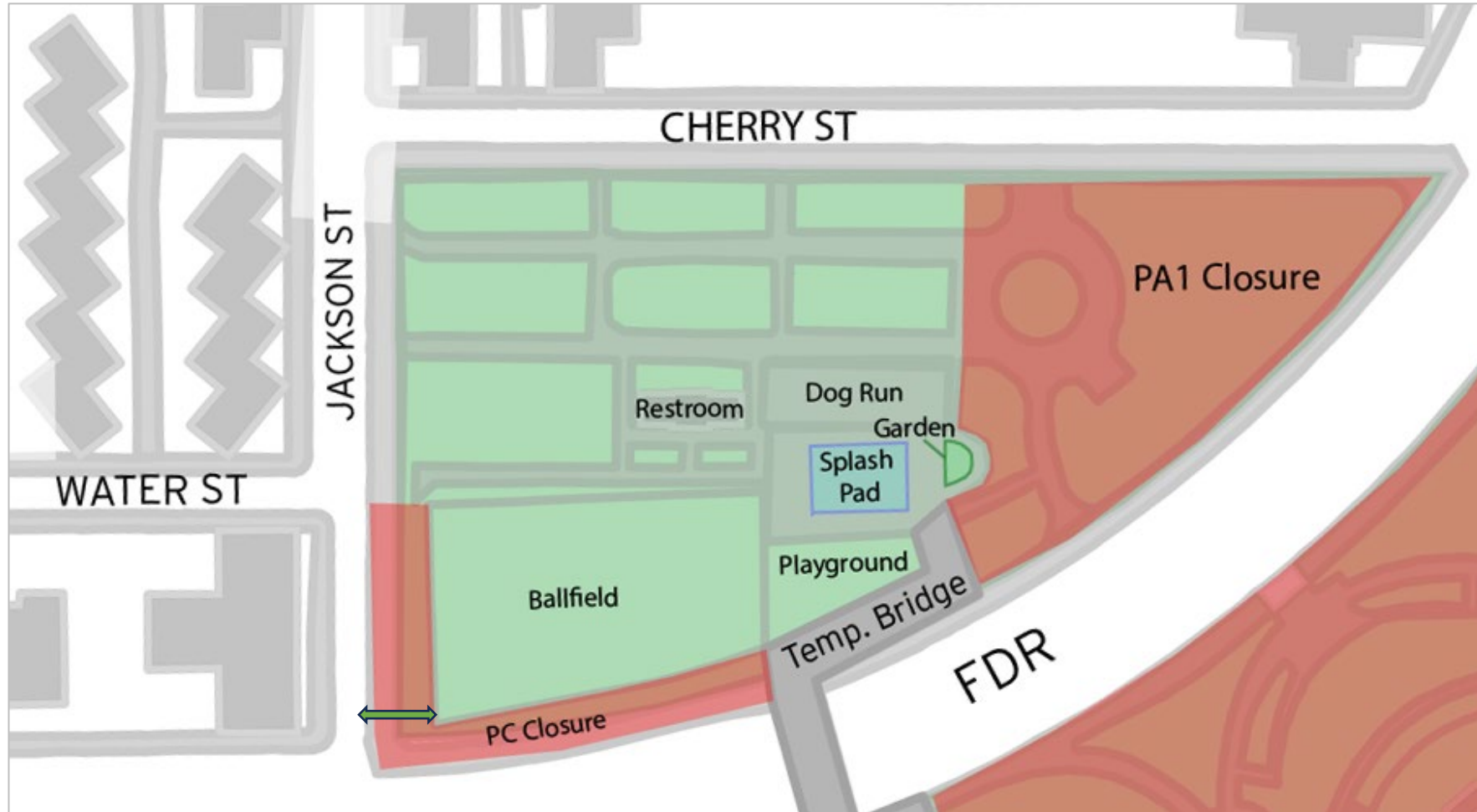
- A. Mobilization & Protection
- B. Test Pits and Site Survey
- C. Utility relocation and upgrades
- D. Excavation for Interceptor Gate Chambers
- E. Install parallel conveyance sewer lines
- F. Construction of Interceptor Gate Buildings
- G. Final restoration

## LOCATIONS WITHOUT TIDE GATE CHAMBER BUILDINGS

- A. Mobilization & Protection
- B. Test Pits and Site Survey
- C. Utility relocation and upgrades
- D. Install parallel conveyance sewer lines
- E. Final restoration

# PC | Construction Status – Corlears Hook Park

ALL WORK IS SUBJECT TO CHANGE



Closures in Corlears Hook Park as of October 2023. For illustrative purposes only.

# PC | Construction Status – Corlears Hook Park

ALL WORK IS SUBJECT TO CHANGE

## 1. MOBILIZATION AND PROTECTION – INITIAL MOBILIZATION COMPLETED

- a) Why: To secure the site.
- b) How: Construction fence installation, tree guard installation, etc.

## 2. TEST PITS AND SITE SURVEY – INITIAL TEST PITS COMPLETED

- a) Why: To determine site conditions, including subsurface.
- b) How: Building surveys, small excavations to locate subsurface utilities, etc.

## 3. UTILITY RELOCATION AND UPGRADES - IN PROGRESS

- a) Why: To move underground utilities (water, gas, electric, steam) out of the way so that there is clear access to the sewer mains below.
- b) How: The contractor excavates the utilities in sections and relocates them—sometimes requiring road closures and parking interruptions.
- c) Result: New utilities, such as water mains, for residents and contractor has easier access to deep sewer infrastructure.

## 4. EXCAVATION FOR INTERCEPTOR GATE CHAMBERS - UPCOMING

- a) Why: Interceptor gate chambers are large subsurface infrastructure which connects the interceptor and provides access to the gate which is deep underground.
- b) How: Partially close CHP ballfield (approx. stays 70% open) and fully close CHP playground at the end of 2023 to stage for deep excavation.
- c) Result: Continued progress toward constructing the interceptor gate chamber with anticipated return of ballfield to Parks by Spring 2025.

## 5. INSTALL PARALLEL SEWER LINES

- a) Why: Increase the sewer capacity of the protected area.

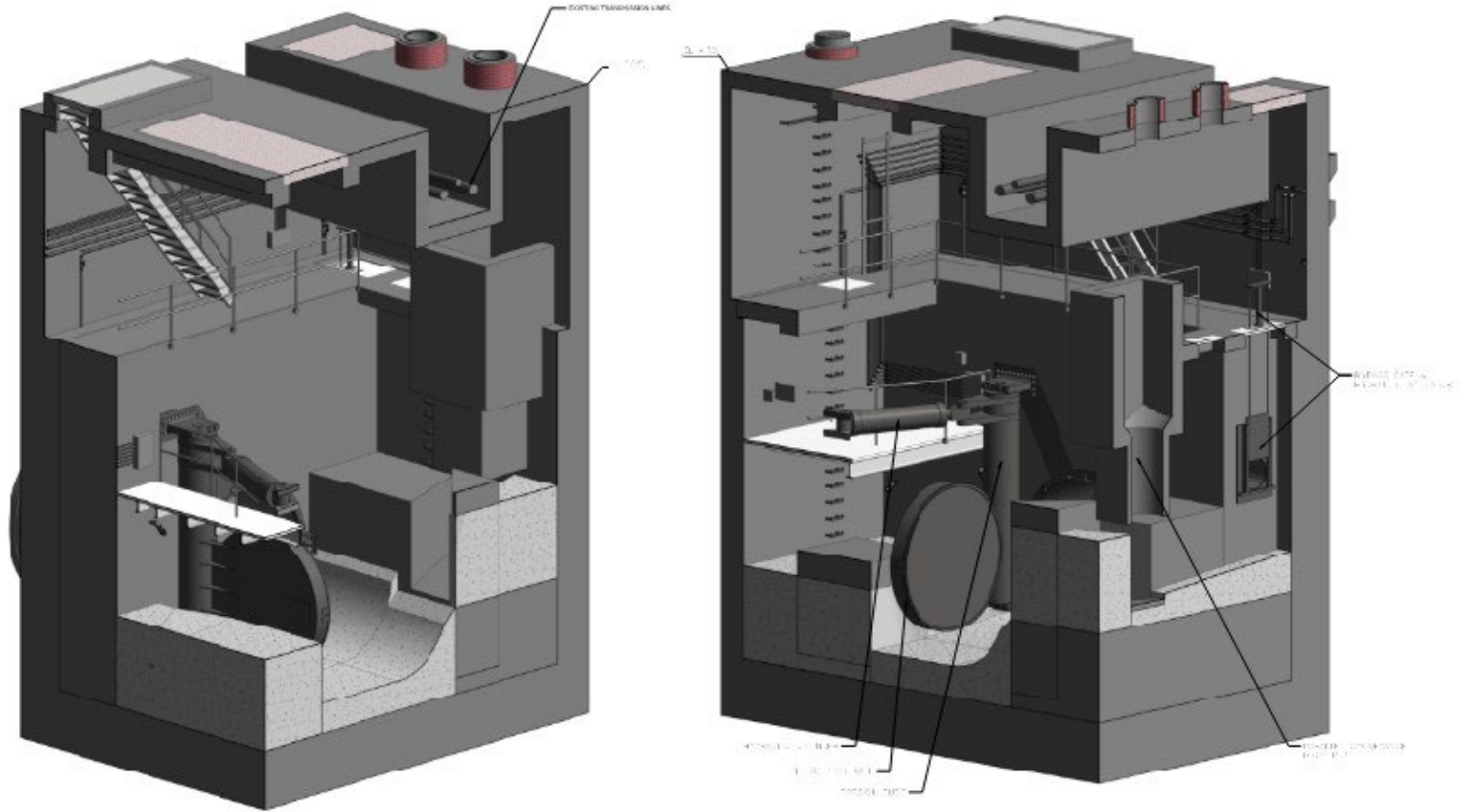
## 6. FINAL RESTORATION - 2026

# PC | Interceptor Gate and Chamber

ALL WORK IS SUBJECT TO CHANGE

## Interceptor Gate Chamber Scale

- 37' x 26'
- Approx. 4 stories tall





# PC | Rendering of Interceptor Gate Building

ALL WORK IS SUBJECT TO CHANGE



# PC | Excavation for Interceptor Gate Building

ALL WORK IS SUBJECT TO CHANGE

## Late 2023/Early 2024

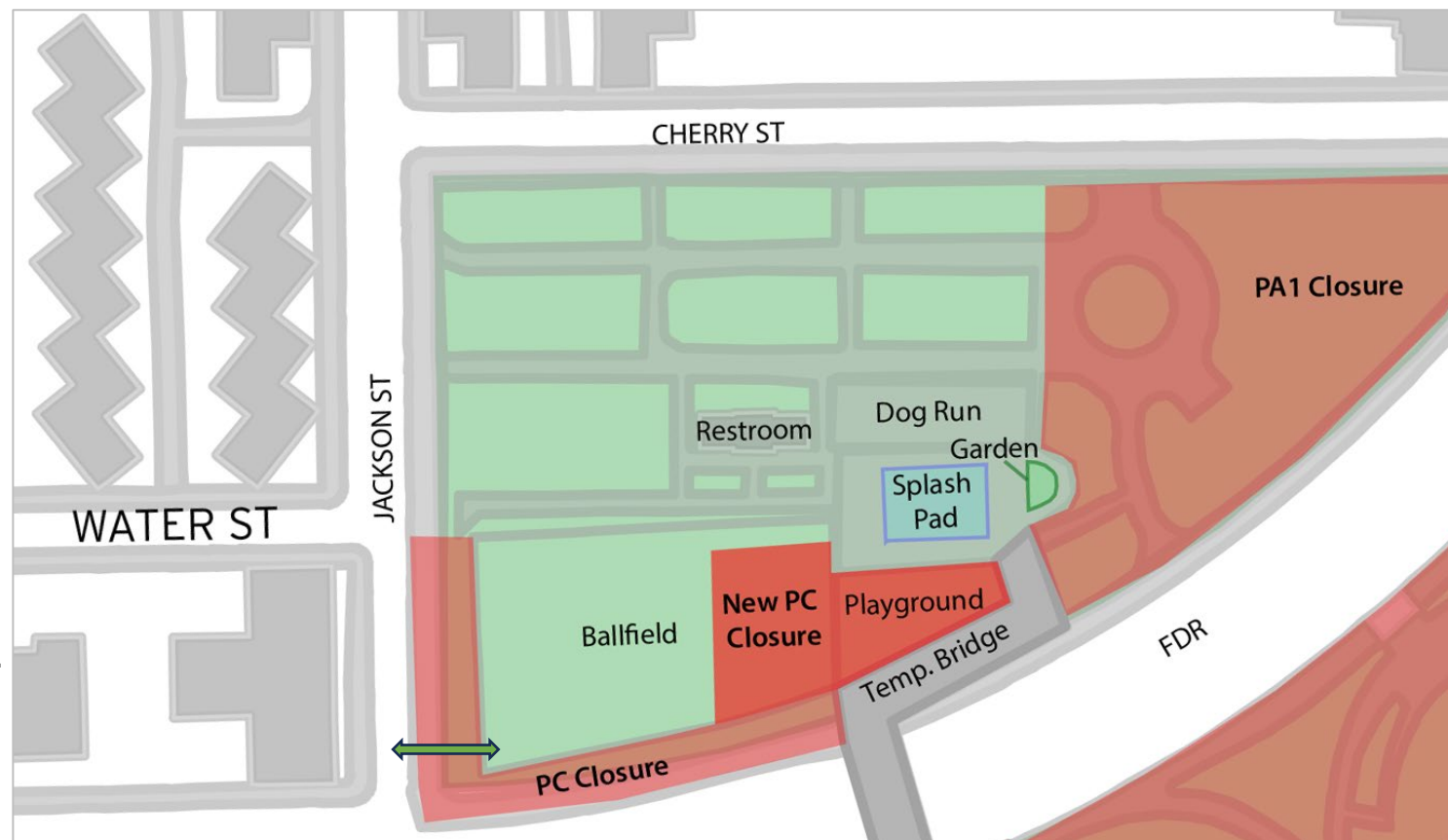
- Partial closure of Corlears Hook Park ballfields amounting to approximately a 30% loss of space.
- 160' x 134' youth league field will remain. Parks coordinating alternative locations for adult leagues.
- New synthetic turf will be installed in the open portion of the athletic field this Winter 2023/24 (Parks)
- Full closure of Corlears Hook Park playground. Access to temporary bridge will remain.

## Outcome

- Interceptor gate chamber construction – a critical piece of the flood protection system which needs to connect to the interceptor sewer – can move forward.

## Spring 2025

- Contractor will return ballfield to NYC Parks when work concludes.
- Playground area restored



*Proposed closures to facilitate interceptor gate chamber construction.  
For illustrative purposes only.*

# PC | Excavation for Interceptor Gate Building

ALL WORK IS SUBJECT TO CHANGE

## Interceptor Sewer

- The interceptor sewer is 9' wide sewer that carries wastewater and stormwater to the Manhattan pump station which sends combined sewage to the Newton Creek Wastewater Treatment Plant.

## Interceptor Gate Chamber

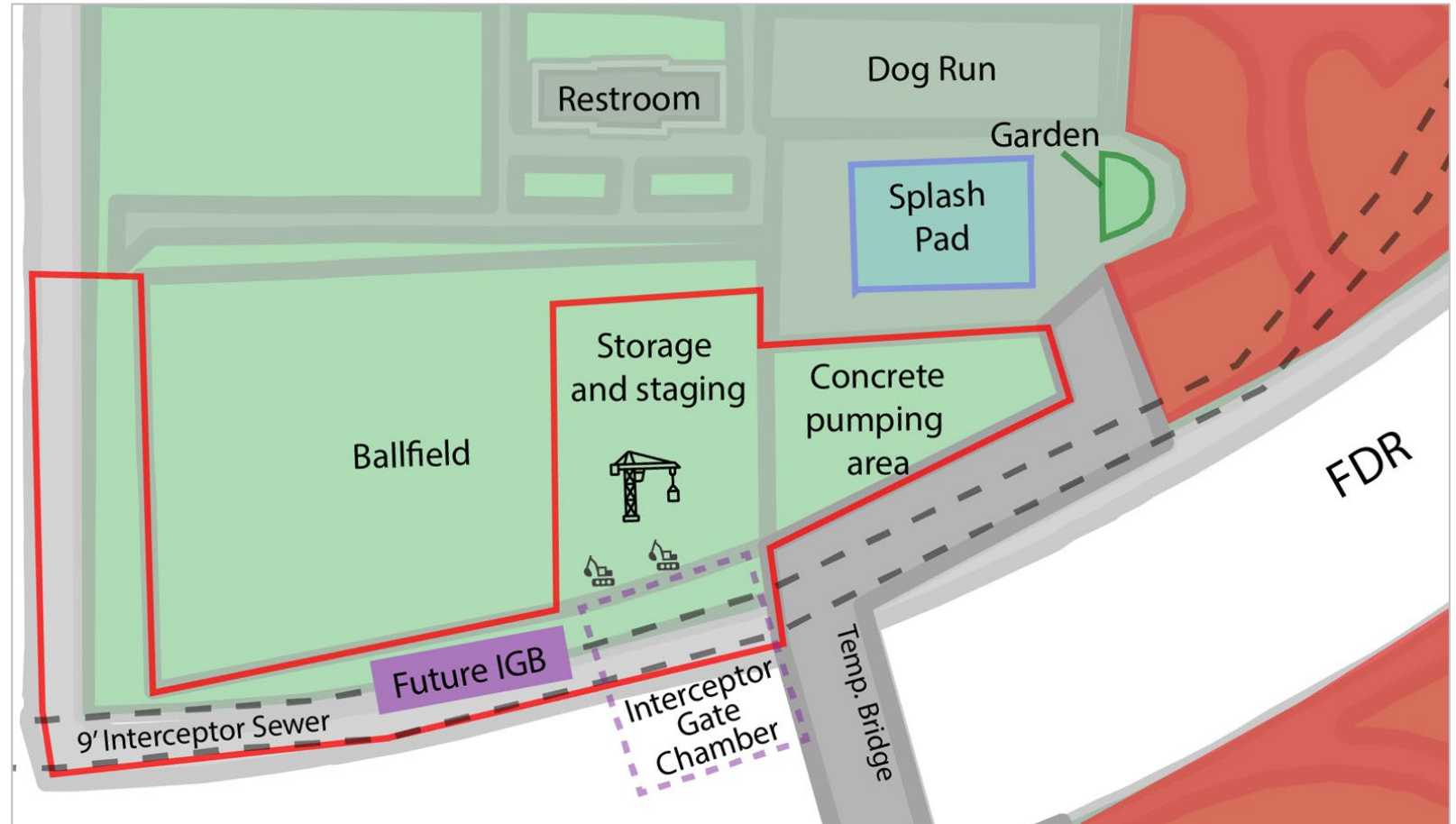
- Massive chamber that houses and provides access to the interceptor gate and sewer.

## Interceptor Gate Chamber Building (IGB)

- Future building that will house controls for the interceptor gate chamber.

## Construction Space Requirements

- A crane and multiple excavators are necessary to excavate for and construct the interceptor gate chamber due to the depth of interceptor sewer and the chamber's size
- Eventually, the operation will also impact southbound FDR Dr.



*Proposed closures to facilitate interceptor gate chamber construction.  
For illustrative purposes only.*



### East Side Coastal Resiliency

The East Side Coastal Resiliency (ESCR) Project is a coastal protection initiative, jointly funded by the City of New York and the federal government, aimed at reducing flood risk due to coastal storms and sea level rise on Manhattan's East Side from East 25th Street to Montgomery Street. The boundaries of this project correspond with the natural "pinch-points" in the 100-year floodplain: areas where the land is higher along the coastline, making it easier to close the system off from water entering from the north and south. The project design integrates flood protection into the community fabric, improving waterfront open spaces and access, rather than walling off the neighborhood. Construction on the East Side Coastal Resiliency project will begin in Fall 2020 and continue through 2025.

 <p><b>Construction Progress</b></p>	 <p><b>Resiliency &amp; Flood Protection</b></p>	 <p><b>Project Background &amp; Goals</b></p>	 <p><b>Project Design</b></p>
<p><b>Construction Notices</b> View our most recent community presentations for updates as we prepare for upcoming construction activities.</p>	<p><b>Resiliency and Flood Protection</b> Learn more about ESCR's resiliency and the forward-thinking flood protection measures being implemented to protect 110,000 New Yorkers from the impacts of climate change.</p>	<p><b>Project Background and Goals</b> Read about the history and background of ESCR, and the goals driving this technically complex infrastructure project.</p>	<p><b>Project Design</b> From flood protection measures to bike lanes and ball fields, the ESCR project is improving open spaces and access in the Lower East Side while strengthening the city's coastline.</p>

# NEED MORE INFORMATION?

## VISIT US AT: [www.nyc.gov/escr](http://www.nyc.gov/escr)



Wishing you joy and peace of  
the holiday season throughout  
the new year.

