

# East Side Coastal Resiliency SANDRESM1

## Public Design Commission Final Design Review East River Park Amphitheater Structure

March 20, 2023



**BOROUGH CONTEXT**



**NEIGHBORHOOD CONTEXT**



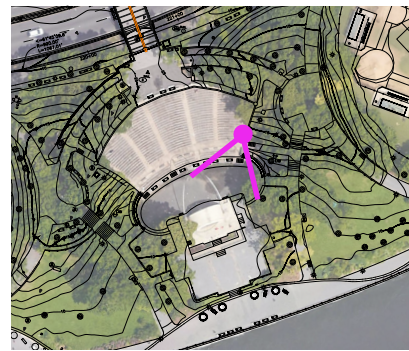
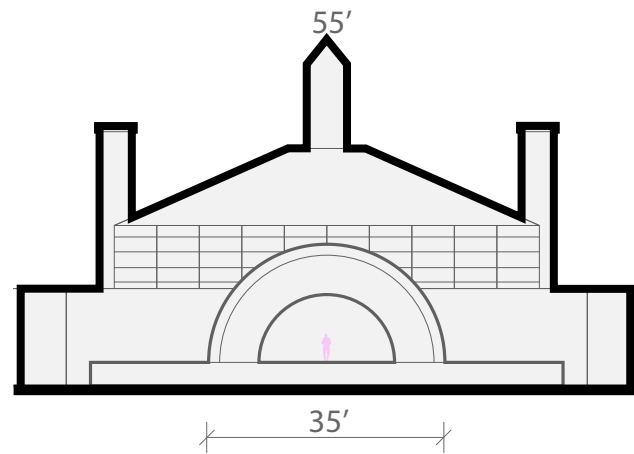




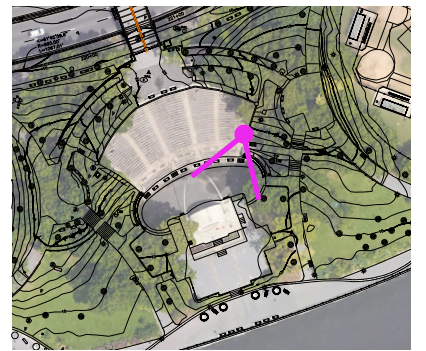
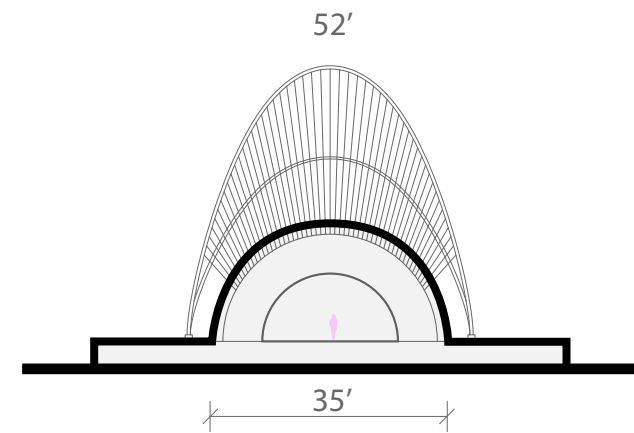
Original east river park amphitheater & recreation center, 1941



Rehabilitated structure, 2019



KEY



KEY



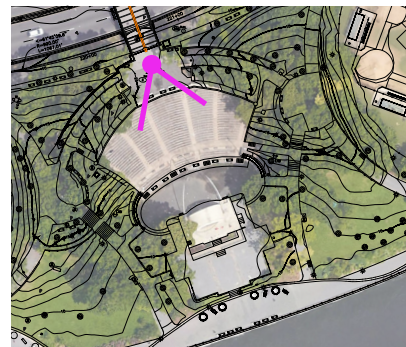
View from Corlears Hook Pedestrian Bridge

**AS ONE ENTERED THE PARK FROM THE CORLEARS HOOK BRIDGE, THE PREVIOUS STRUCTURE WAS VISIBLE AND HELPED CREATE A SENSE OF ARRIVAL.**

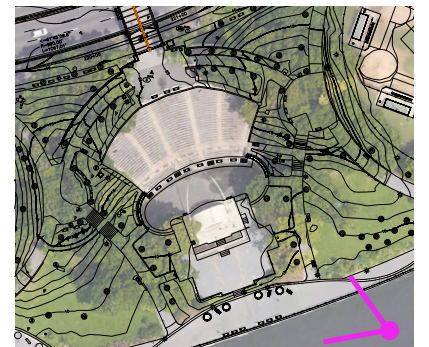


View from East River

**WHILE VISIBLE FROM THE RIVER, THE PREVIOUS STRUCTURE WAS TUCKED INTO THE PARK, ABOUT 80-90' FROM THE PLATFORM EDGE.**



KEY



KEY



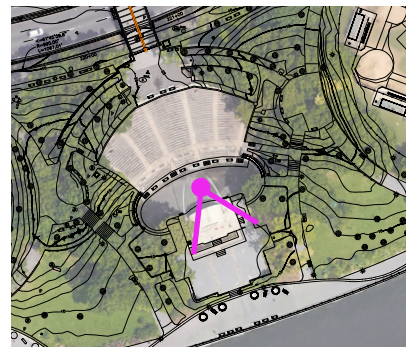
THE PREVIOUS STRUCTURE WAS AN OPEN ARCH THAT FRAMED VIEWS TO THE EAST RIVER AND BROOKLYN.

View through arch to water

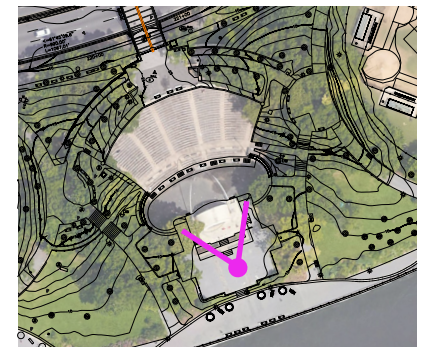


THIS OPEN ARCH WAS NOT ONLY A BACKDROP FOR PERFORMANCES, IT WAS A COMMUNITY PAVILION.

View though arch to seating



KEY

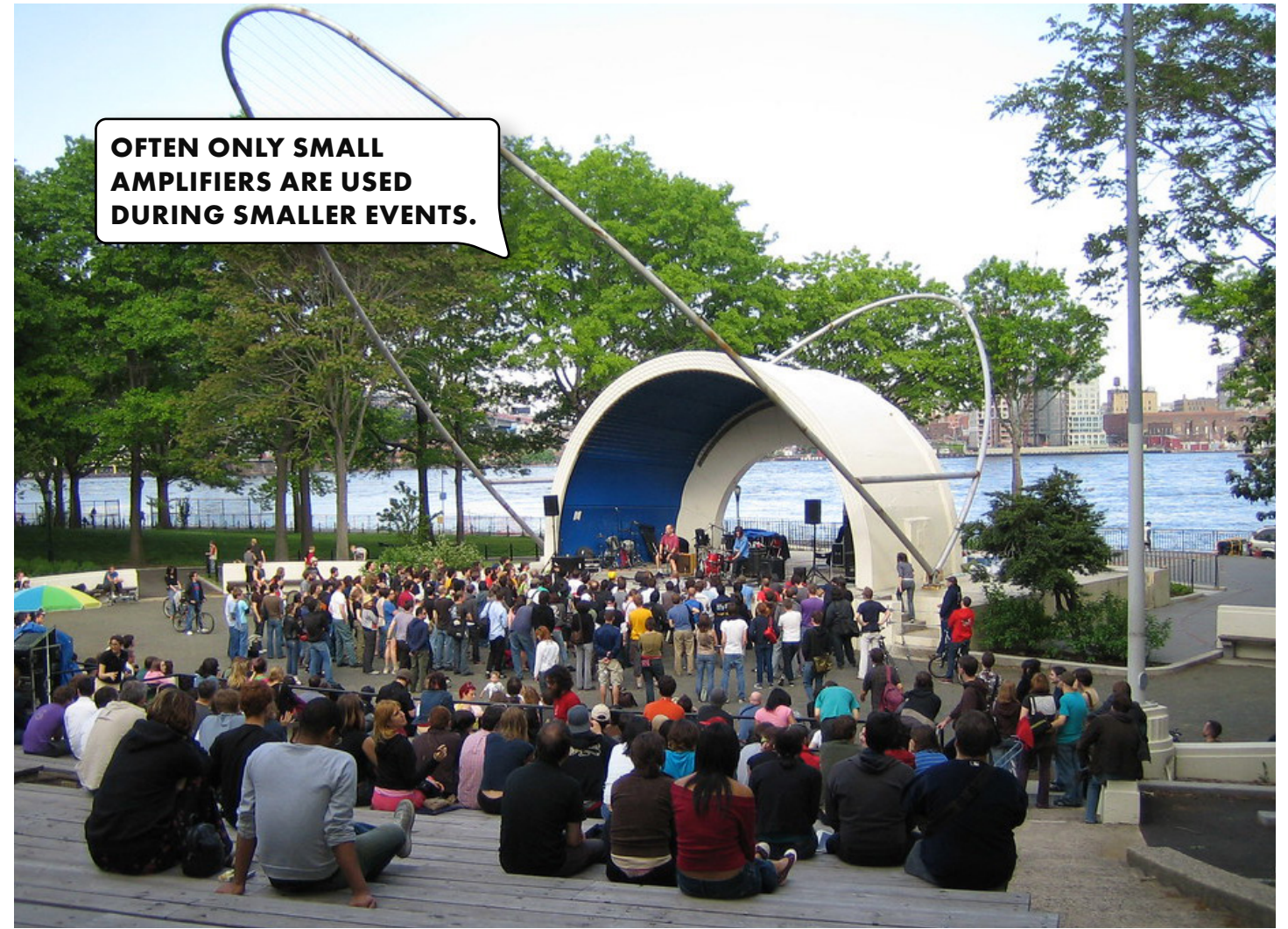


KEY



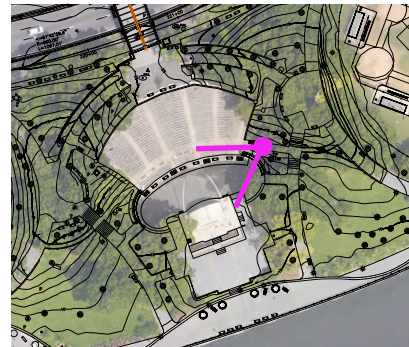
**DURING LARGE EVENTS, SUCH AS SUMMER STAGE, A TEMPORARY STAGE WITH INDEPENDENT RIGGING, LIGHTING, AND AMPLIFICATION IS INSTALLED**

Large Performance

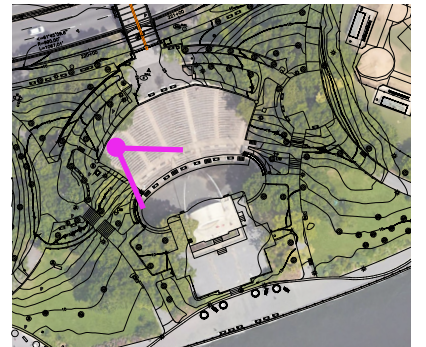


**OFTEN ONLY SMALL AMPLIFIERS ARE USED DURING SMALLER EVENTS.**

Small Performance



KEY



KEY



**LARGE  
EVENT**



- Larger events and performances for 1000+ spectators.
- Views towards performers on stage.
- All seating rows occupied (including overflow area).
- Significant audio amplification and separate rigging/stage setup.

**AVERAGE  
EVENT**



- For around 200 spectators
- Views towards performers on stage
- First rows and 'orchestra pit' occupied
- Less audio amplification.
- Most common permitted event size.

**DANCE  
EVENT**



- Dance parties of around 100 persons.
- Occupies stage area, flex spaces, and even the esplanade
- Open plan for less structured and flexible setups
- Waterfront view backdrop.

**SMALL  
EVENT**



- Gatherings of around 100 persons.
- Waterfront view backdrop.
- Occupies stage footprint.
- Limited need for audio amplification.

**IMPROMPTU PER-  
FORMANCE**



- Small, informal events & performances.
- Secondary stage.
- Area for spectators and passers-by to gather.
- No audio amplification.

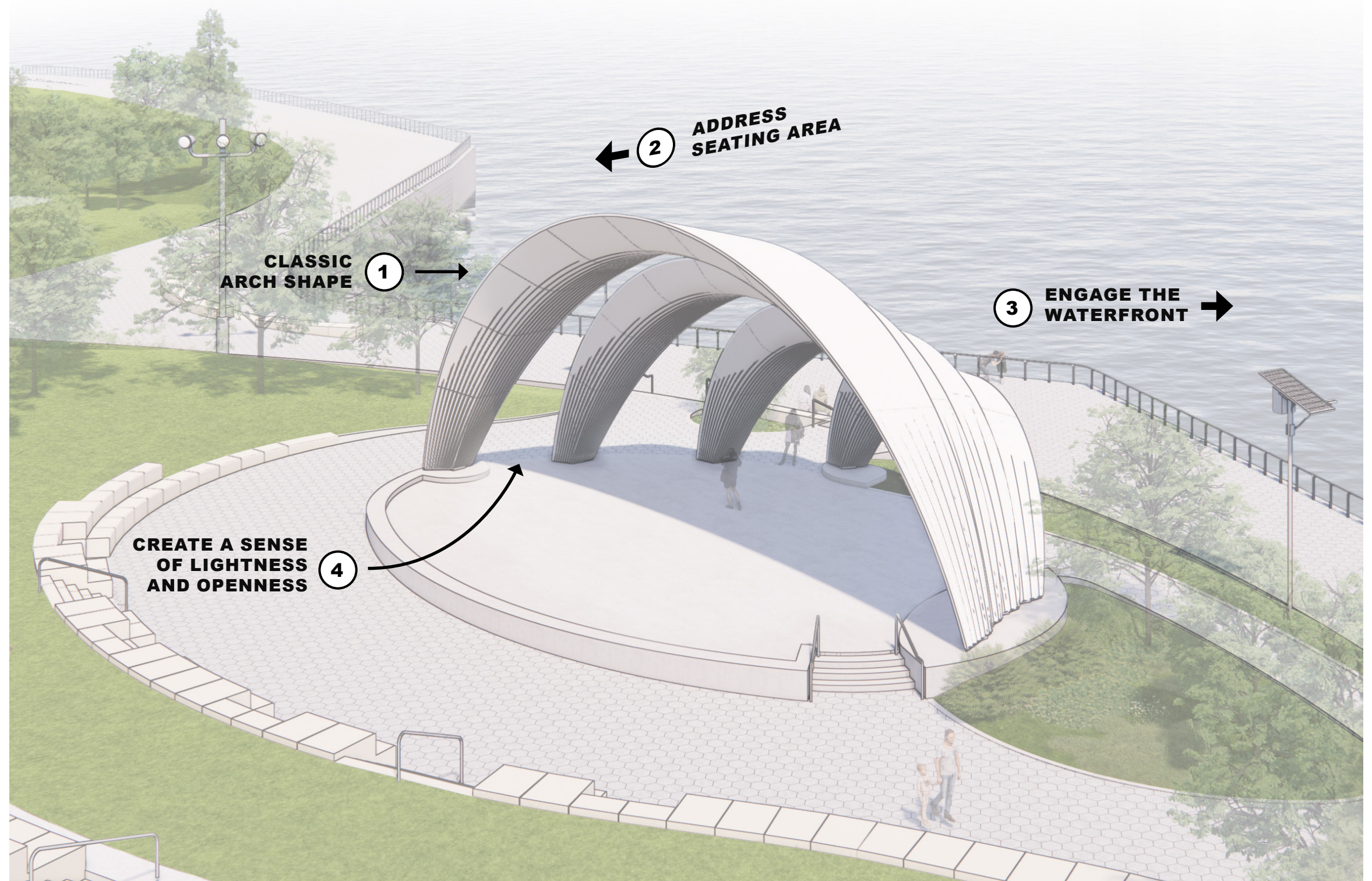
**HANGOUT  
SPOT**



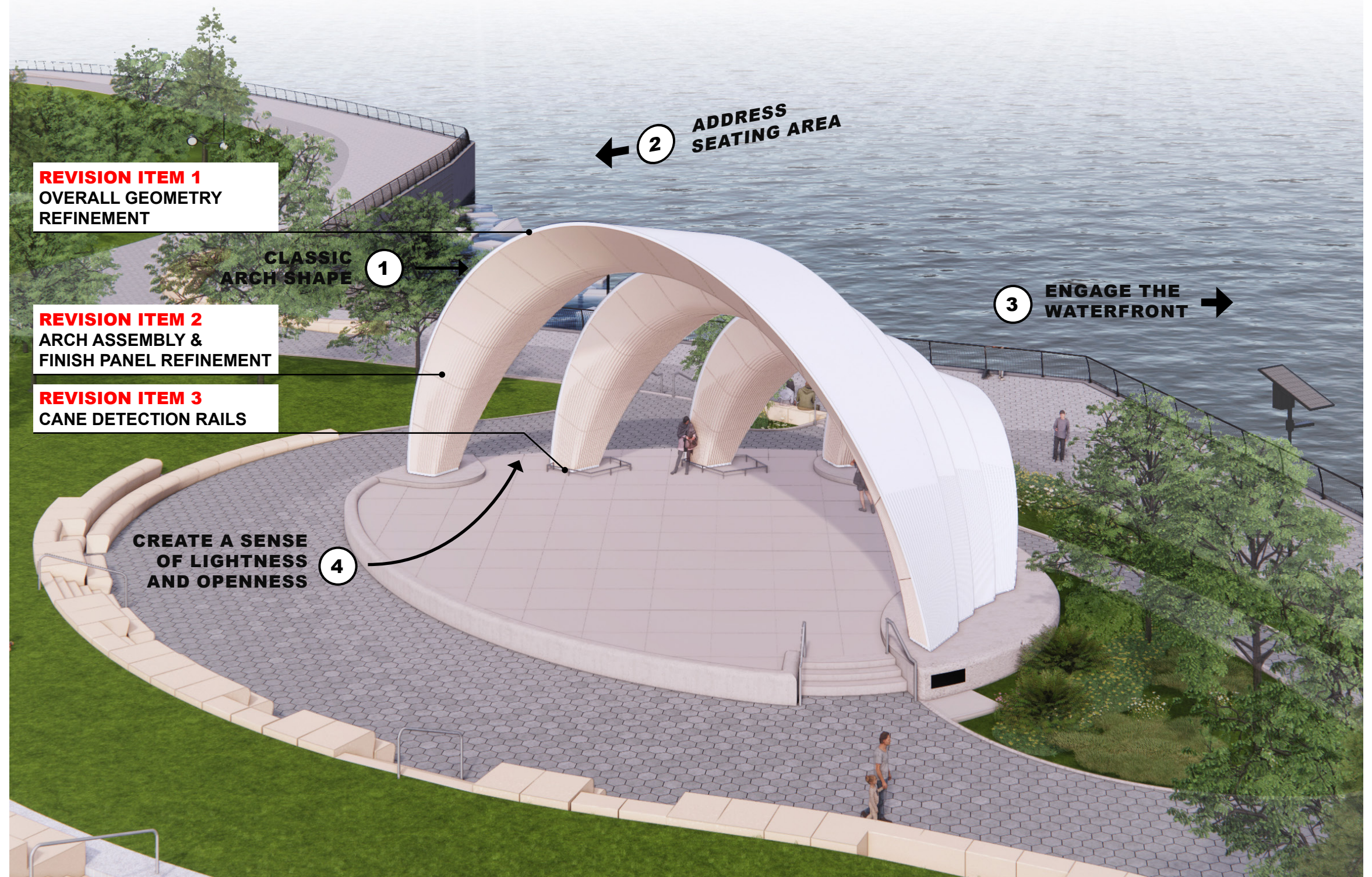
- Place to take a break and sit in the shade
- Addresses the waterfront

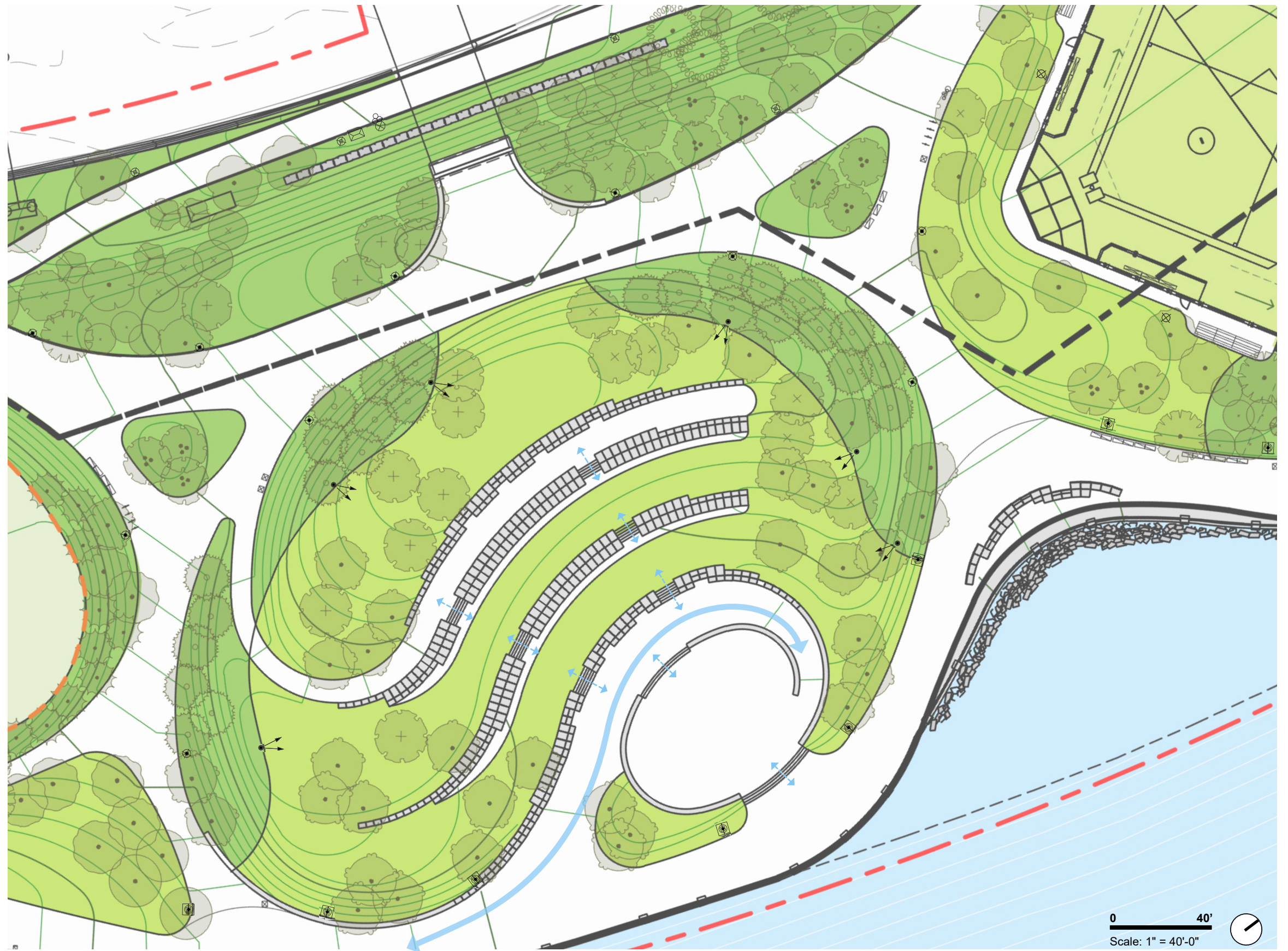


- 1 Embrace a Classic Arch Shape:**  
An arch shape pays homage to both the original structure and classic bandshells while creating opportunities for physical access and sight lines to the waterfront.
- 2 Clearly Address the Main Seating Area:**  
The front arch is on axis with the main seating area and is scaled to provide a sense of arrival as one enters from the Corlears Hook bridge.
- 3 Engage the Waterfront:**  
Views to the waterfront are framed by an arch parallel to the esplanade. This arch is lower than the front, creating a more intimate experience near the water. An accessible path and stairs connect the stage to the esplanade and reinforce this design as a multi-purpose bandshell and waterfront pavilion.
- 4 Create a Sense of Lightness and Openness:**  
An open-arch scheme allows for greater visibility and connectivity at the stage level. This approach also creates separation between the overlapping arches above, allowing light and air to enter while keeping the rain out.
- 5 Perform Acoustically:**  
The structure is designed to direct sound toward the seating and landscape. This will improve the sound quality for small, unamplified events while mitigating sound projections toward the upland neighborhood.



- 1 Embrace a Classic Arch Shape:**  
An arch shape pays homage to both the original structure and classic bandshells while creating opportunities for physical access and sight lines to the waterfront.
- 2 Clearly Address the Main Seating Area:**  
The front arch is on axis with the main seating area and is scaled to provide a sense of arrival as one enters from the Corlears Hook bridge.
- 3 Engage the Waterfront:**  
Views to the waterfront are framed by an arch parallel to the esplanade. This arch is lower than the front, creating a more intimate experience near the water. An accessible path and stairs connect the stage to the esplanade and reinforce this design as a multi-purpose bandshell and waterfront pavilion.
- 4 Create a Sense of Lightness and Openness:**  
An open-arch scheme allows for greater visibility and connectivity at the stage level. This approach also creates separation between the overlapping arches above, allowing light and air to enter while keeping the rain out.
- 5 Perform Acoustically:**  
The structure is designed to direct sound toward the seating and landscape. This will improve the sound quality for small, unamplified events while mitigating sound projections toward the upland neighborhood.





**Legend:**

- Amphitheater Security Light
- Solar Esplanade Light
- Walkway Light

**Clearly Address the Main Seating Area:**

- Center on the seating area and align with circulation stairs
- Provide a sense of entry and arrival by ensuring strong visibility from the Corlears Hook Bridge




**Engage the Waterfront:**

- Views to the waterfront are framed by an arch that is parallel to the esplanade.
- An accessible path and stairs connect the stage to the esplanade and reinforce this design as a multi-purpose bandshell and waterfront pavilion.

**Create a Sense of Lightness and Openness:**

- The open-arch scheme allows for greater visibility and connectivity at the stage level.

**Legend (No Add'l or Change in Lighting in Scope):**

- Amphitheater Security Light 
- Solar Esplanade Light 
- Walkway Light 
- Limit of Work (M1 Contract Modification) **-- L.O.W. --**



**Clearly Address the Main Seating Area:**

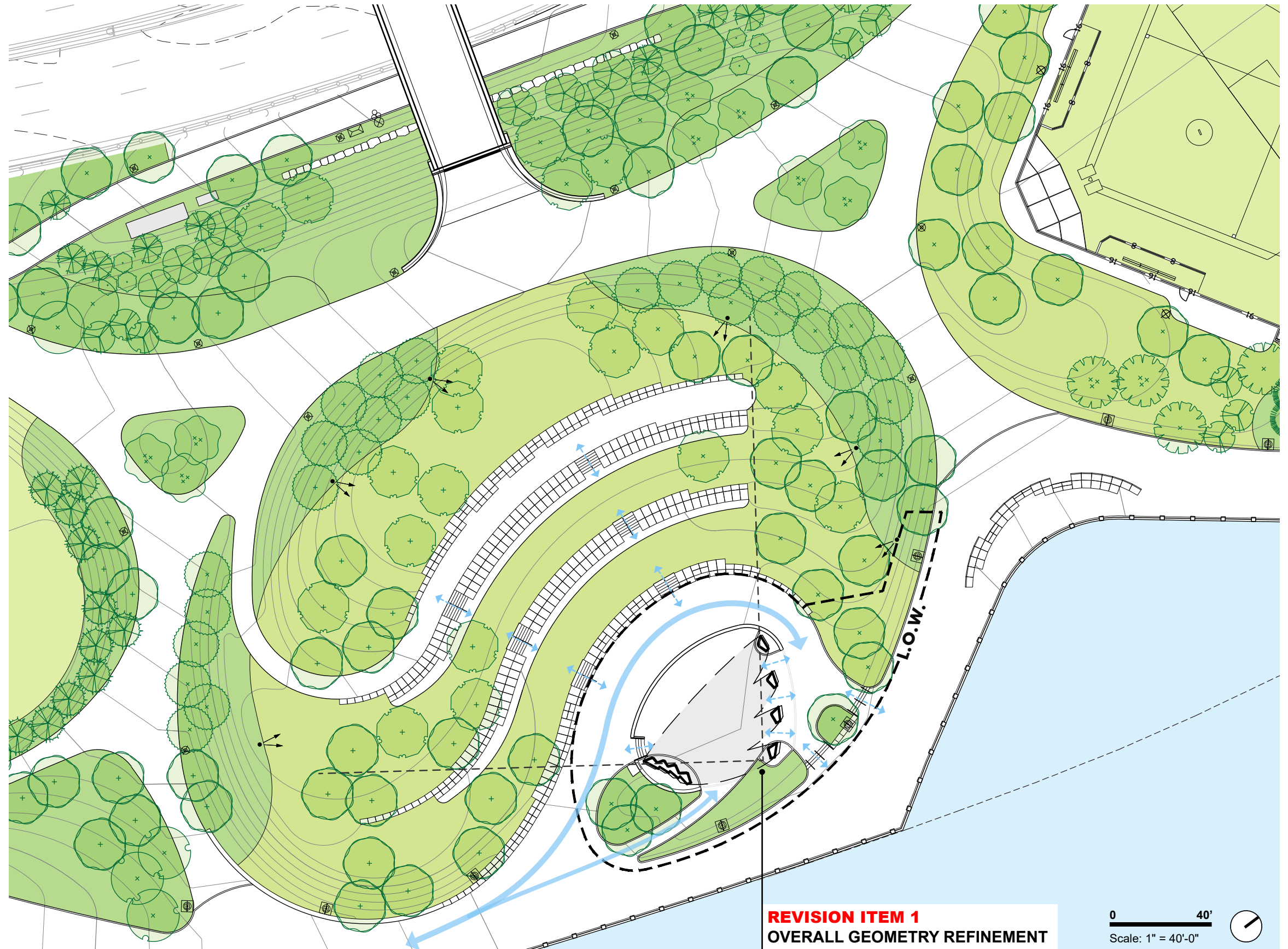
- Center on the seating area and align with circulation stairs
- Provide a sense of entry and arrival by ensuring strong visibility from the Corlears Hook Bridge

**Engage the Waterfront:**

- Views to the waterfront are framed by an arch that is parallel to the esplanade.
- An accessible path and stairs connect the stage to the esplanade and reinforce this design as a multi-purpose bandshell and waterfront pavilion.

**Create a Sense of Lightness and Openness:**

- The open-arch scheme allows for greater visibility and connectivity at the stage level.

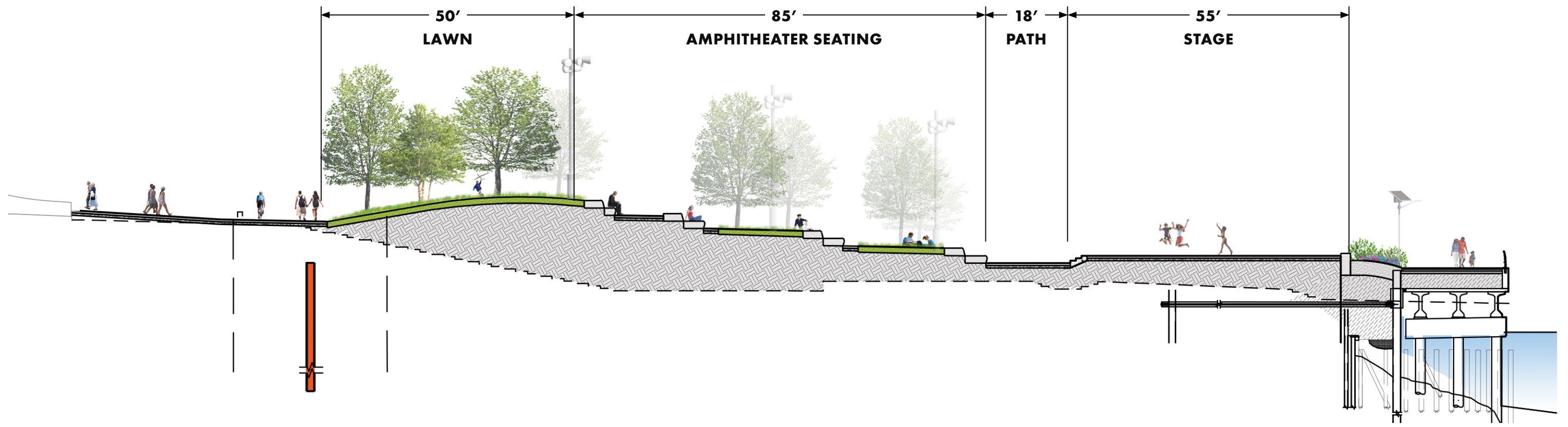


**Legend (No Add'l or Change in Lighting in Scope):**

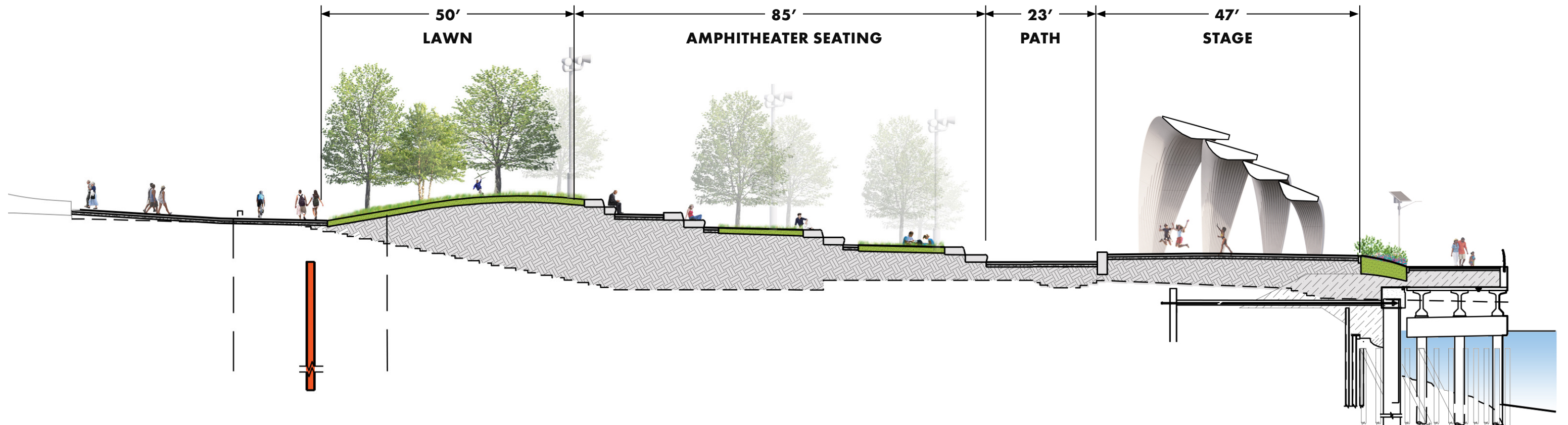
- Amphitheater Security Light
- Solar Esplanade Light
- Walkway Light
- Limit of Work (M1 Contract Modification) **-- L.O.W. --**

**REVISION ITEM 1**  
OVERALL GEOMETRY REFINEMENT

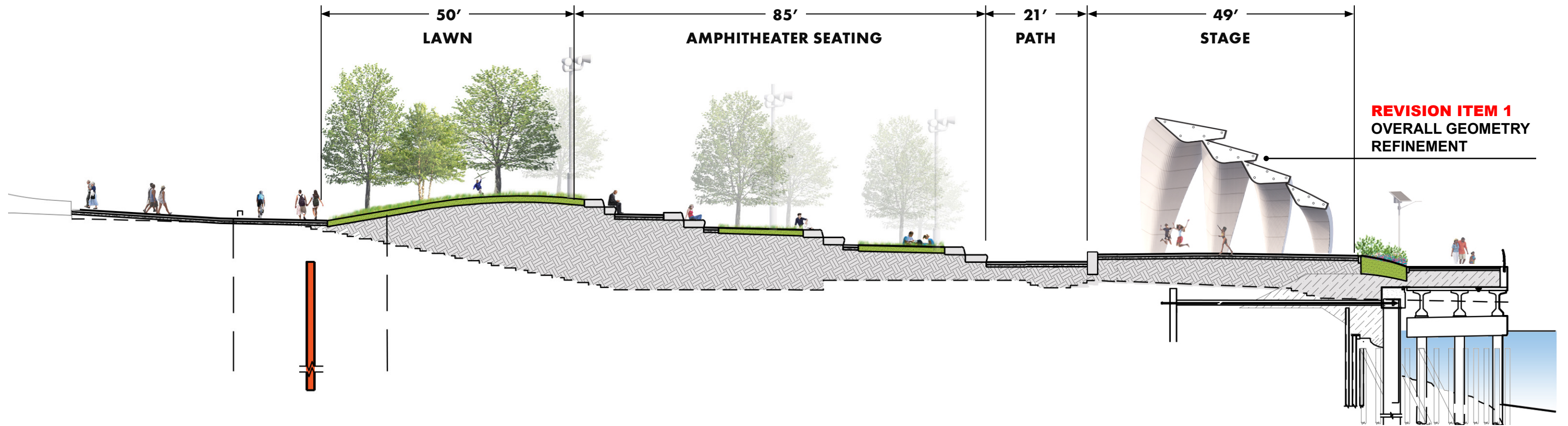
0 40'  
Scale: 1" = 40'-0"



0 20'  
Scale: 1" = 20'-0"



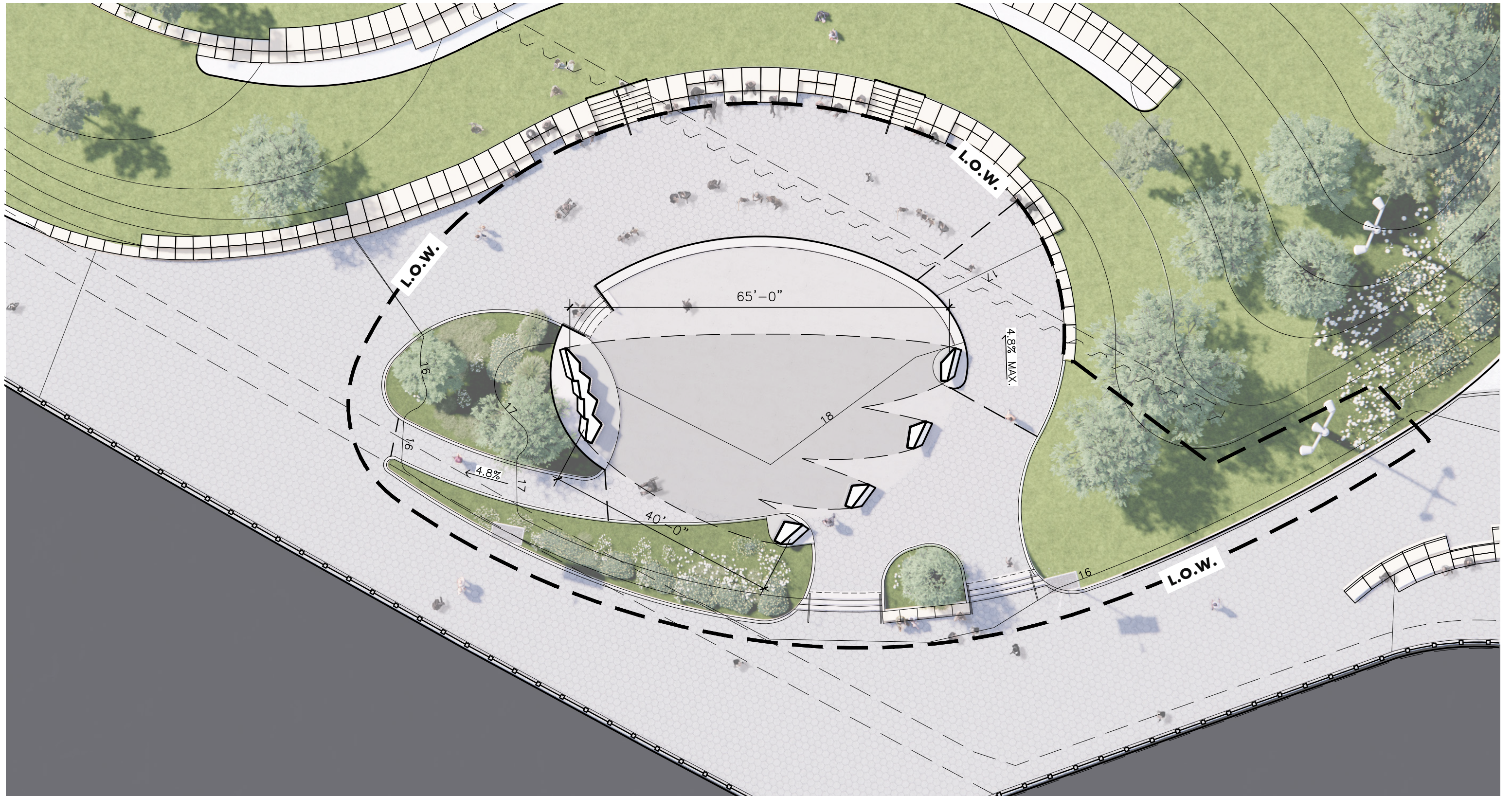
0 20'  
Scale: 1" = 20'-0"



**REVISION ITEM 1**  
OVERALL GEOMETRY REFINEMENT

0 20'  
Scale: 1" = 20'-0"





**Legend:**  
 Limit of Work  
 (M1 Contract Modification)

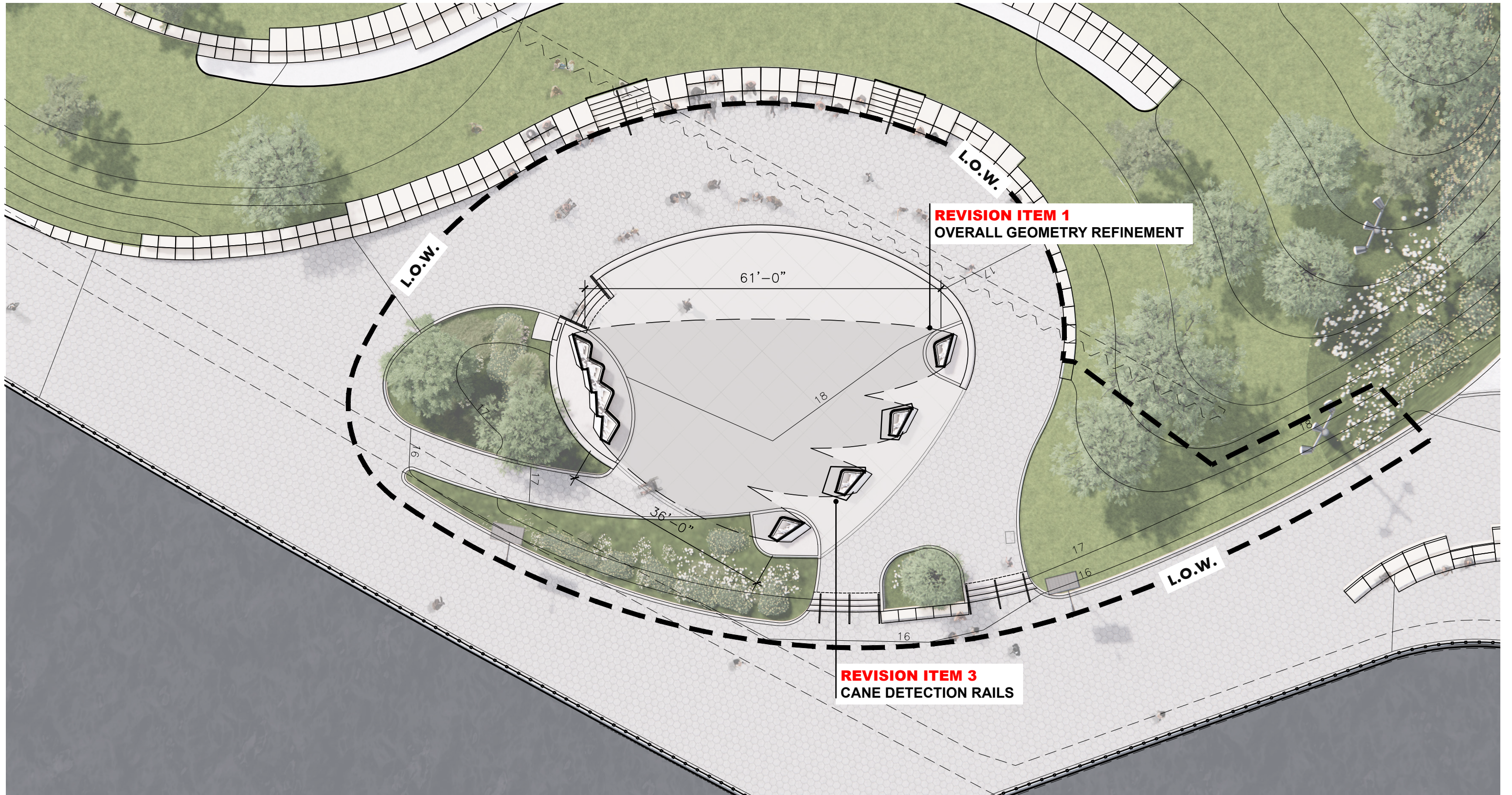
**-- L.O.W. --**

0 16'  
 Scale: 1/16" = 1'

AKRF-KSE, JV	O.N.E. ARCHITECTURE, DPC	MATHEWS NIELSEN LANDSCAPE ARCHITECTS, P.C.	NEW YORK CITY DEPT. OF DESIGN AND CONSTRUCTION	NEW YORK CITY DEPT. OF PARKS AND RECREATION
--------------	--------------------------------	--	--	---

**PDC FINAL REVIEW**  
**EAST RIVER PARK**  
**AMPHITHEATER STRUCTURE**  
 MARCH 20, 2023

**Stage Area Plan**  
**Approved Preliminary Design** 17



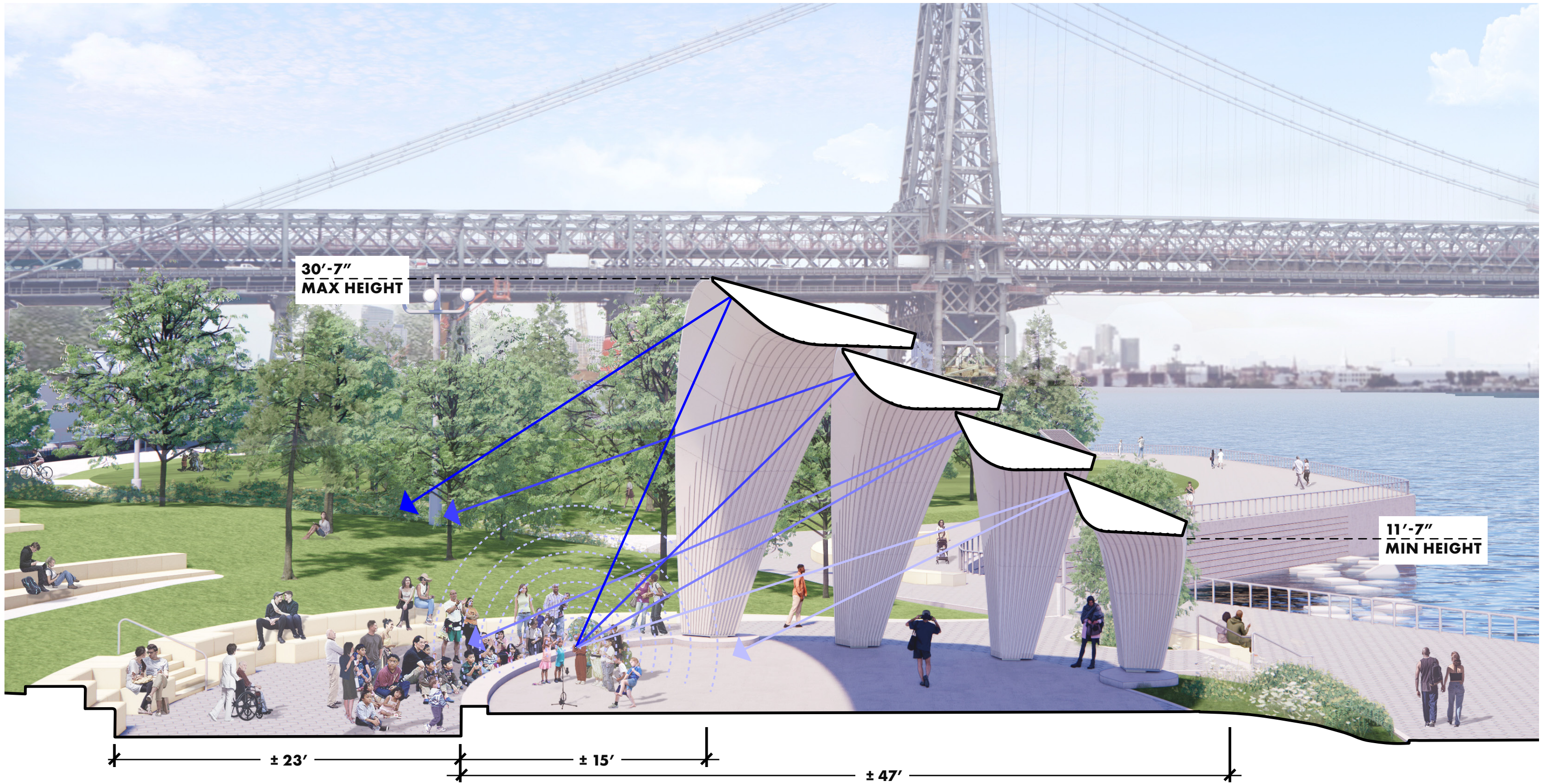
**Legend:**  
 Limit of Work  
 (M1 Contract Modification)      **-- L.O.W. --**

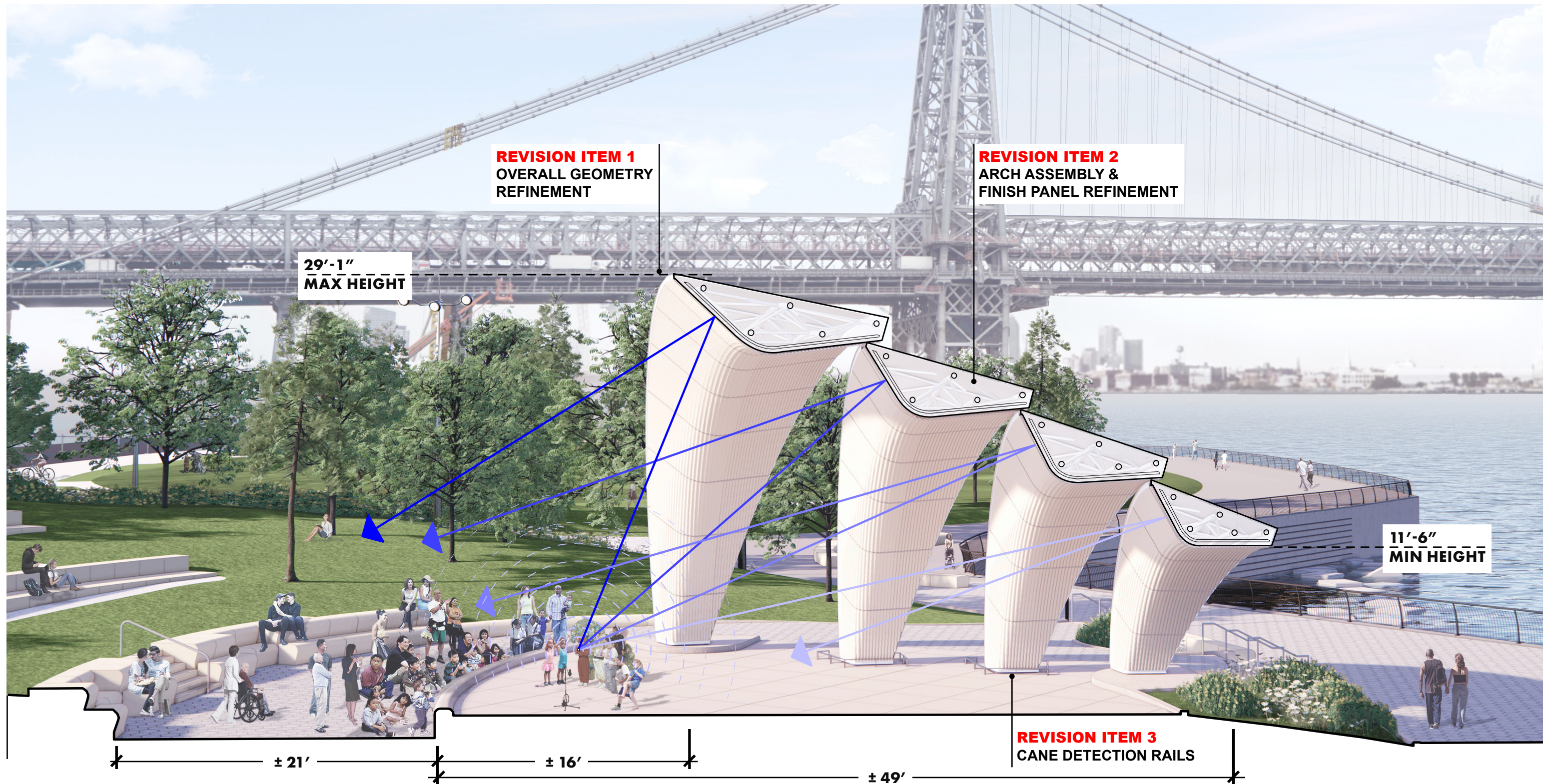
0      16'  
 Scale: 1/16" = 1'     

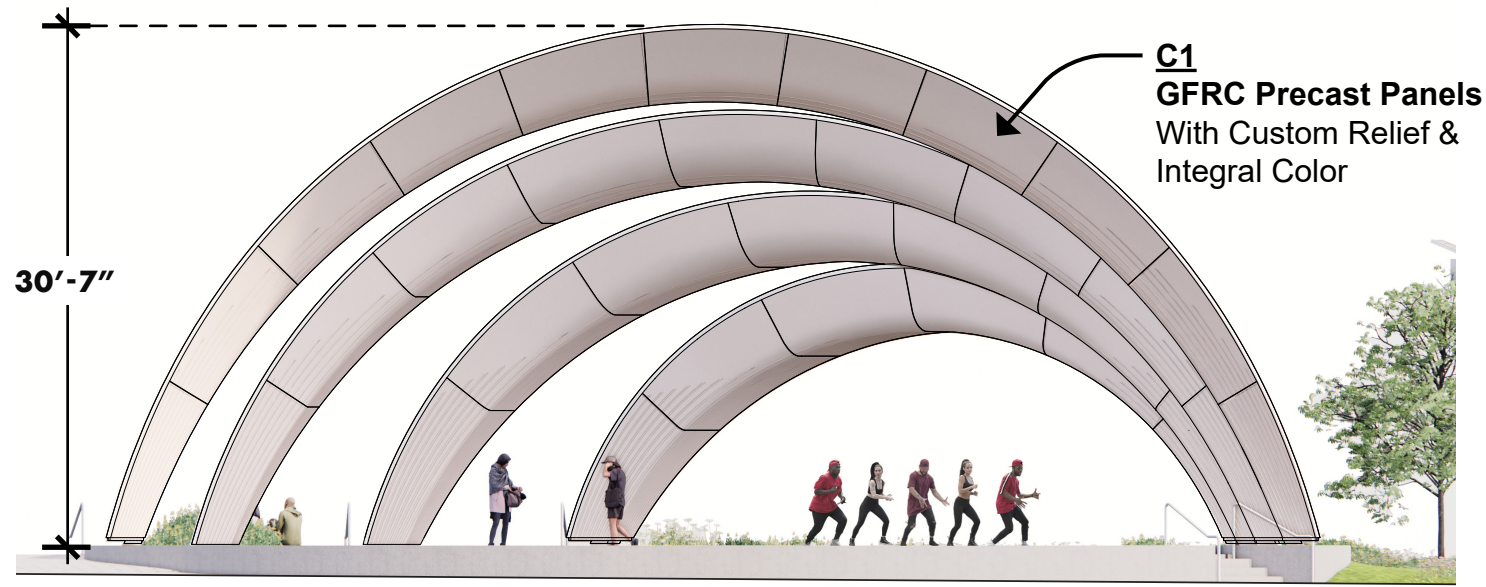
AKRF-KSE, JV	O.N.E. ARCHITECTURE, DPC	MATHEWS NIELSEN LANDSCAPE ARCHITECTS, P.C.	NEW YORK CITY DEPT. OF DESIGN AND CONSTRUCTION	NEW YORK CITY DEPT. OF PARKS AND RECREATION
--------------	--------------------------------	--	--	---

**PDC FINAL REVIEW**  
**EAST RIVER PARK**  
**AMPHITHEATER STRUCTURE**  
 MARCH 20, 2023

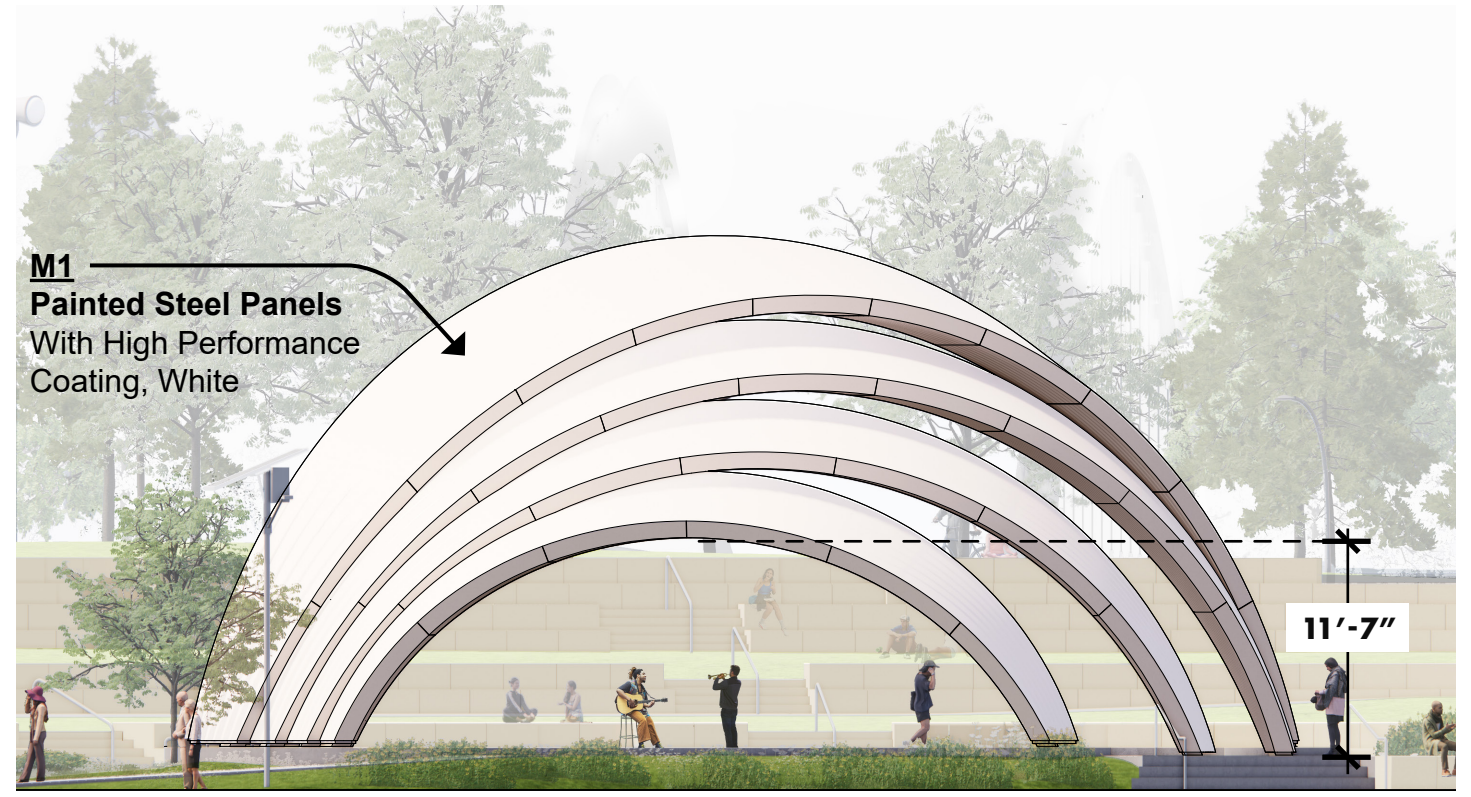
**Stage Area Plan**  
**Proposed Final Design** 18



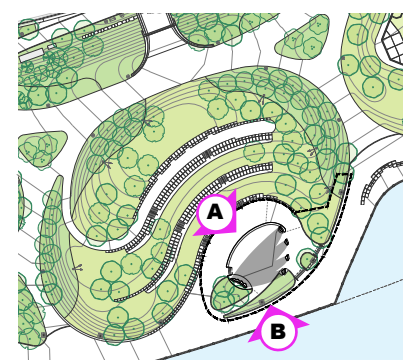




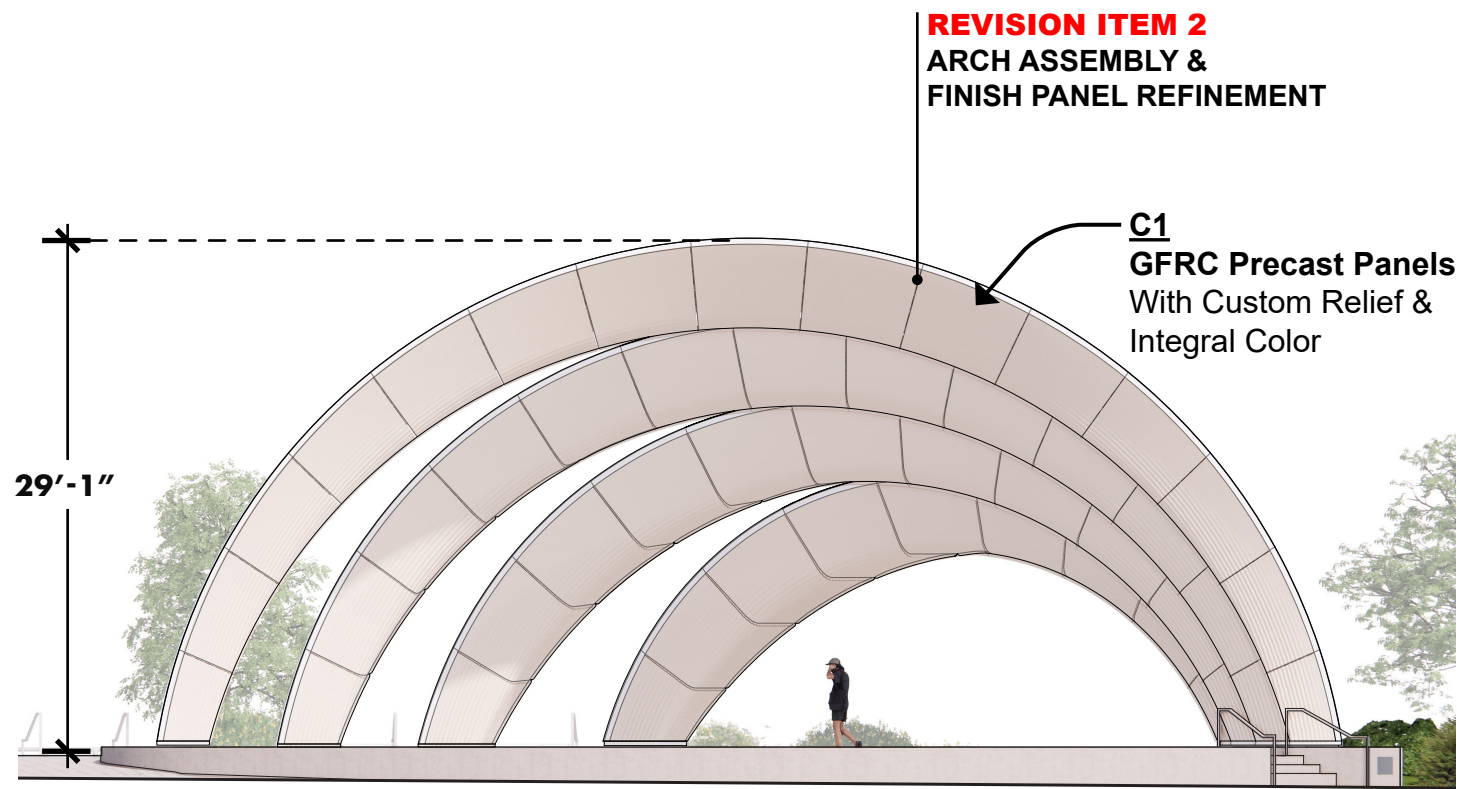
**A. FRONT ELEVATION**



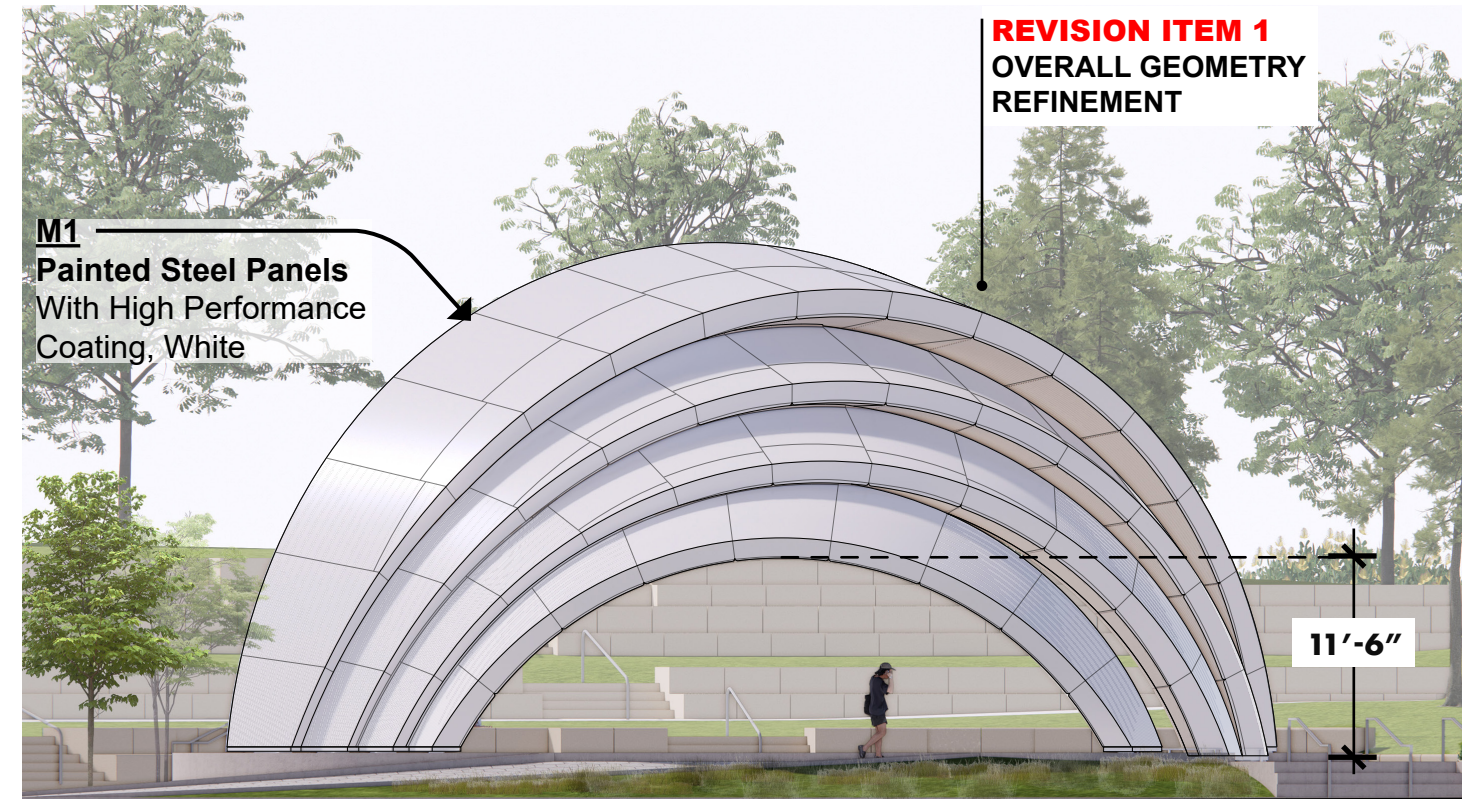
**B. REAR ELEVATION**



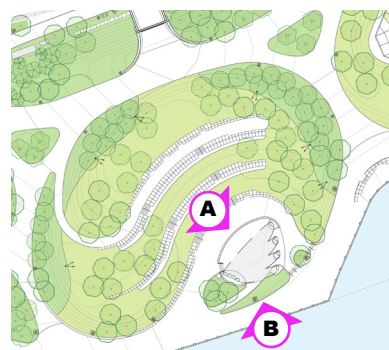
**KEY**



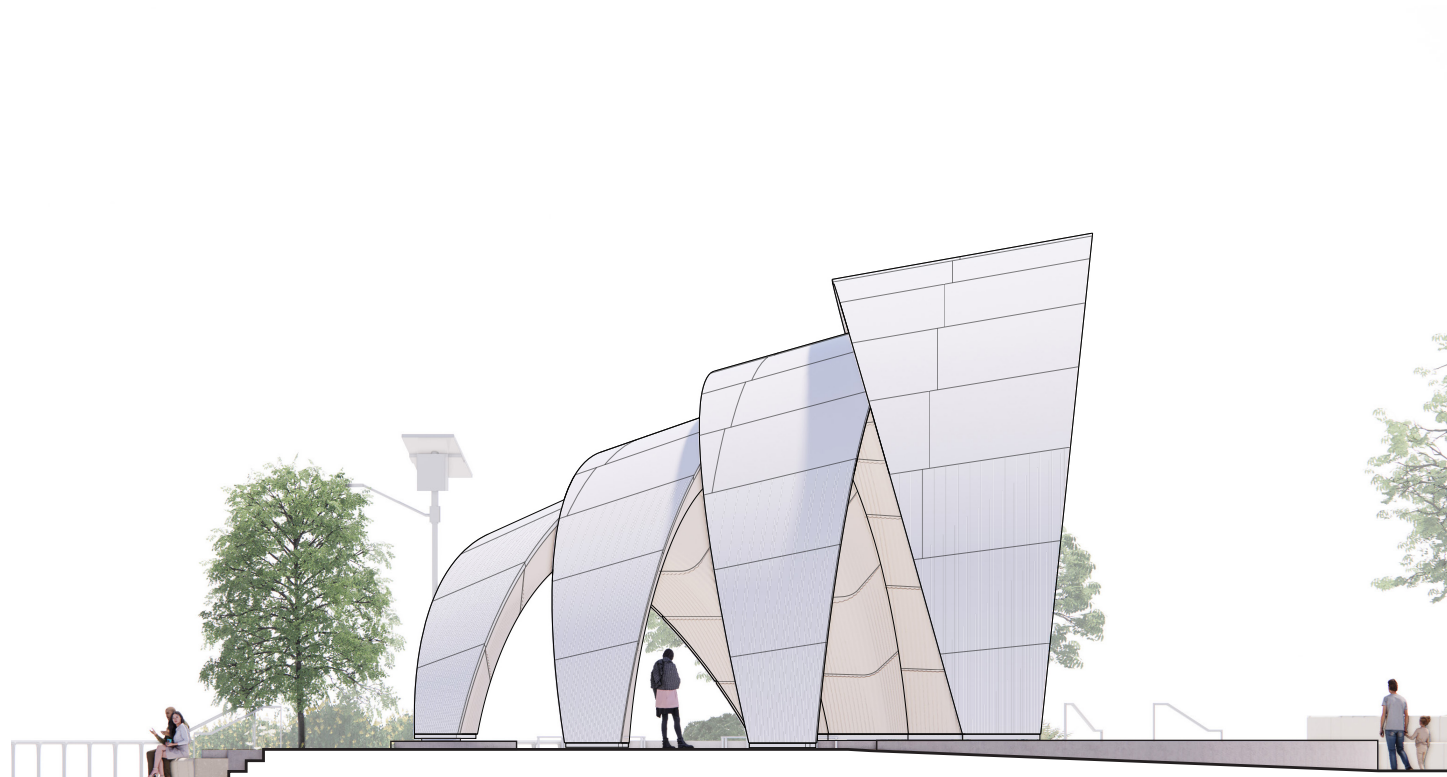
**A. WEST ELEVATION**



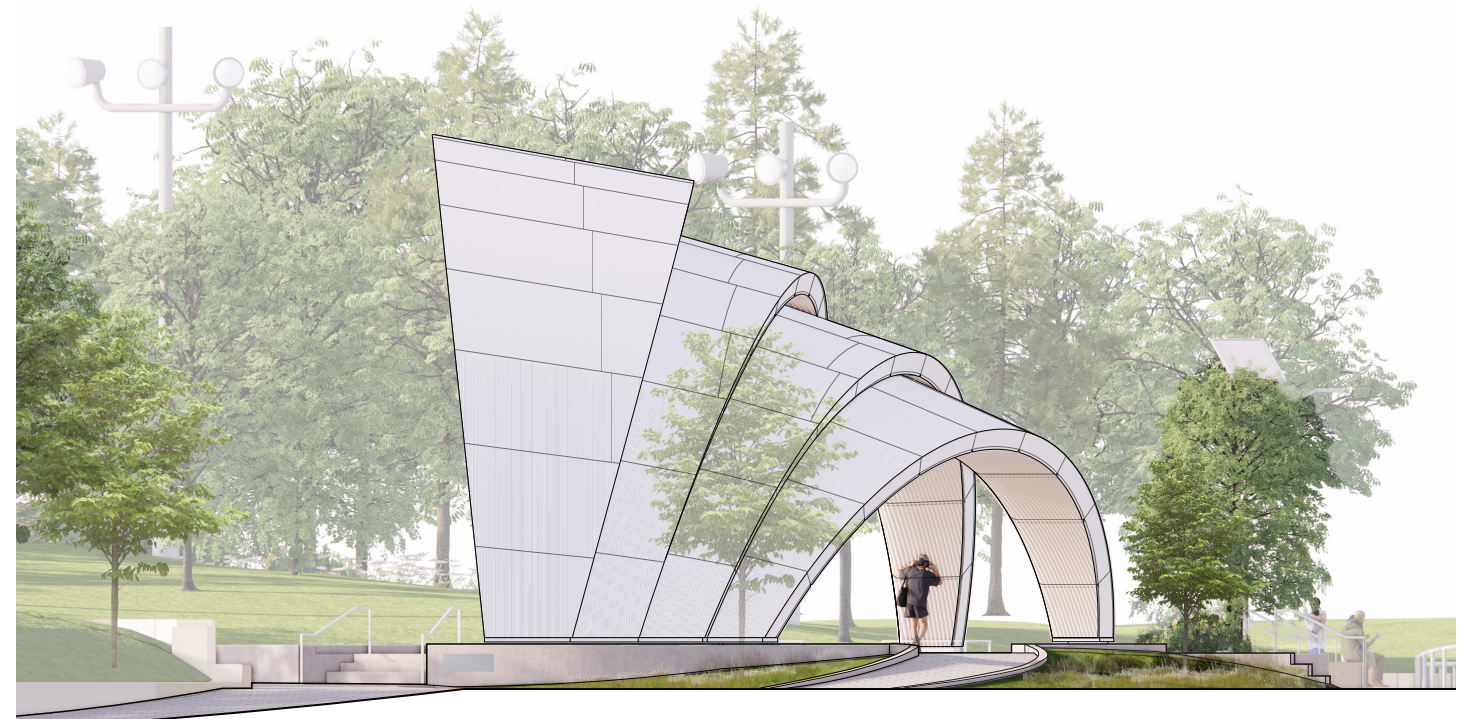
**B. EAST ELEVATION**



**KEY**



**C. NORTH ELEVATION**



**D. SOUTH ELEVATION**



**KEY**







AKRF-KSE, JV

O.N.E.  
ARCHITECTURE,  
DPC

MATHEWS NIELSEN  
LANDSCAPE  
ARCHITECTS, P.C.

NEW YORK CITY  
DEPT. OF DESIGN  
AND CONSTRUCTION

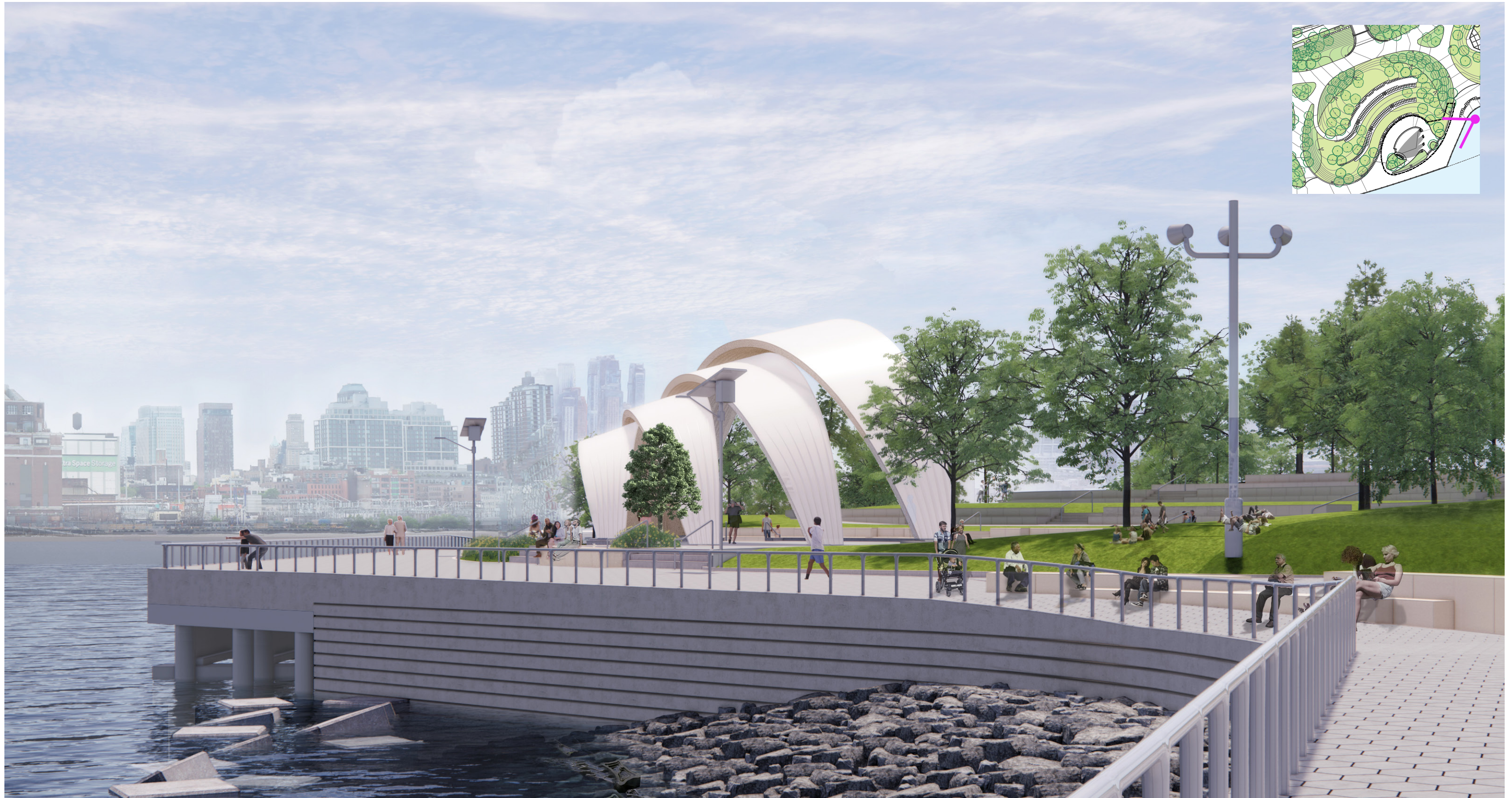
NEW YORK CITY  
DEPT. OF PARKS  
AND RECREATION

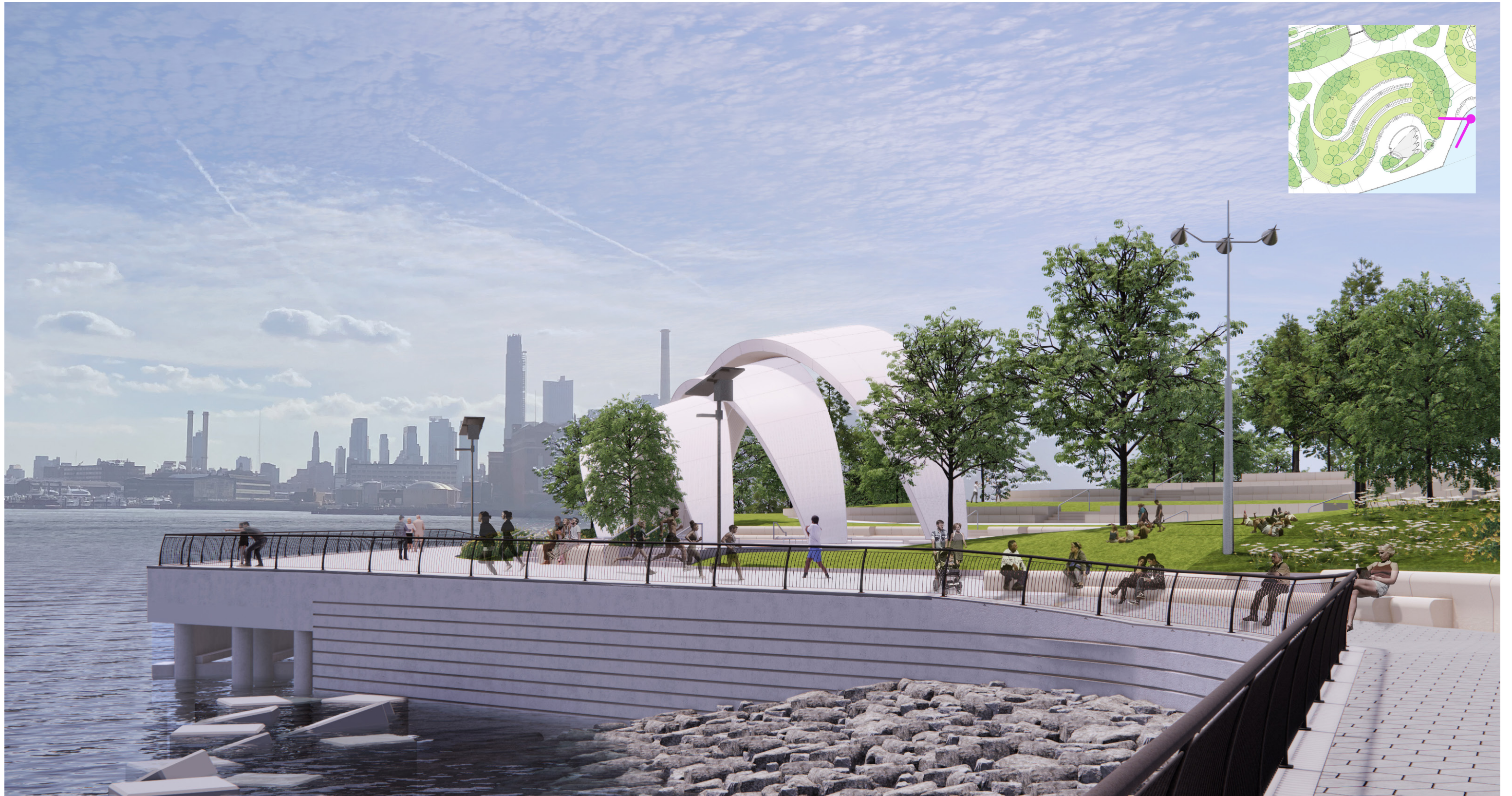
**PDC FINAL REVIEW**  
**EAST RIVER PARK**  
**AMPHITHEATER STRUCTURE**  
MARCH 20, 2023

**View From Bridge Landing**  
**Proposed Final Design** 25











AKRF-KSE, JV

O.N.E.  
ARCHITECTURE,  
DPC

MATHEWS NIELSEN  
LANDSCAPE  
ARCHITECTS, P.C.

NEW YORK CITY  
DEPT. OF DESIGN  
AND CONSTRUCTION

NEW YORK CITY  
DEPT. OF PARKS  
AND RECREATION

**PDC FINAL REVIEW**  
**EAST RIVER PARK**  
**AMPHITHEATER STRUCTURE**  
MARCH 20, 2023

**View From Seating Area - 'Summer Stage Concert'**  
**Proposed Final Design**





AKRF-KSE, JV

O.N.E.  
ARCHITECTURE,  
DPC

MATHEWS NIELSEN  
LANDSCAPE  
ARCHITECTS, P.C.

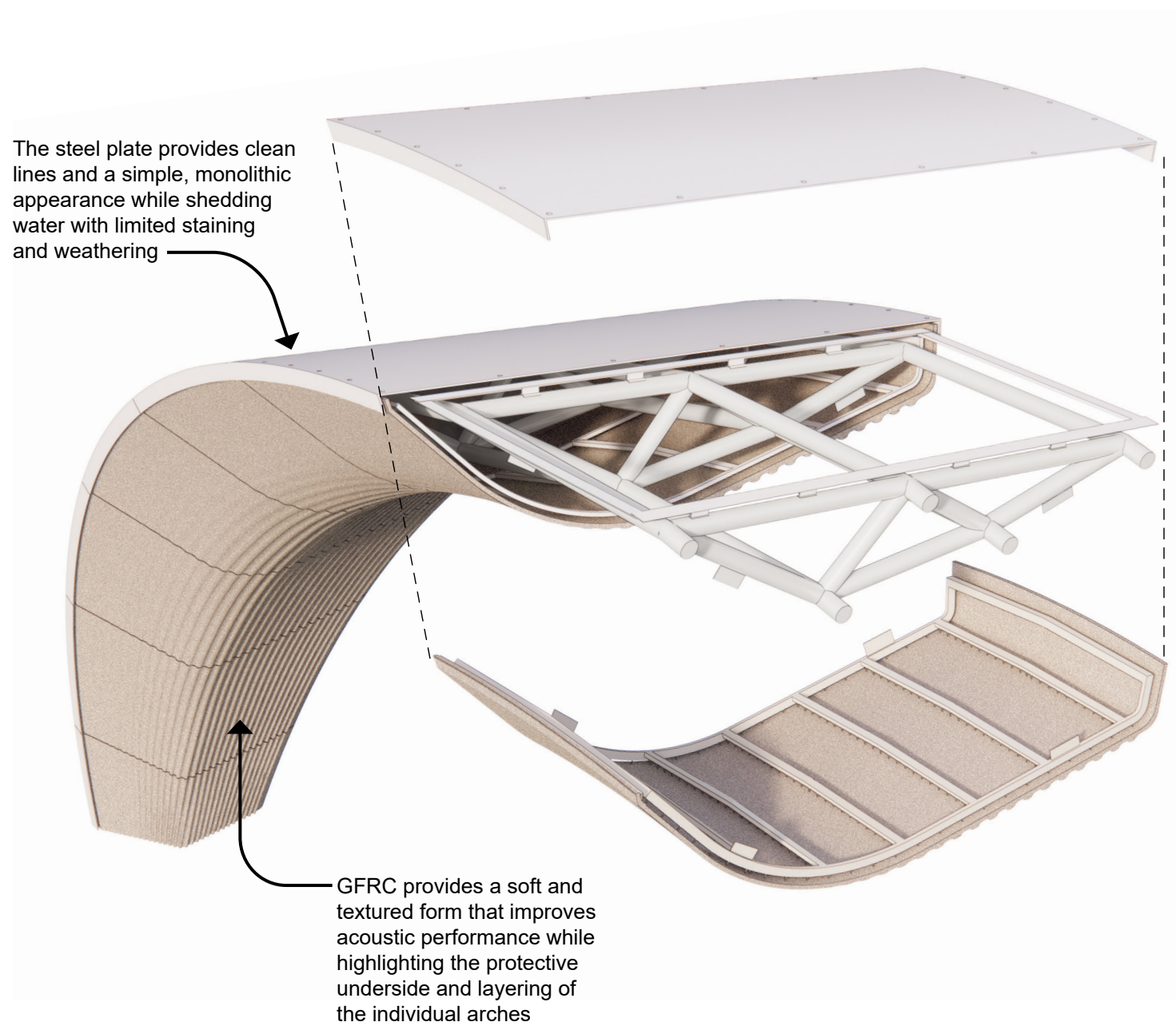
NEW YORK CITY  
DEPT. OF DESIGN  
AND CONSTRUCTION

NEW YORK CITY  
DEPT. OF PARKS  
AND RECREATION

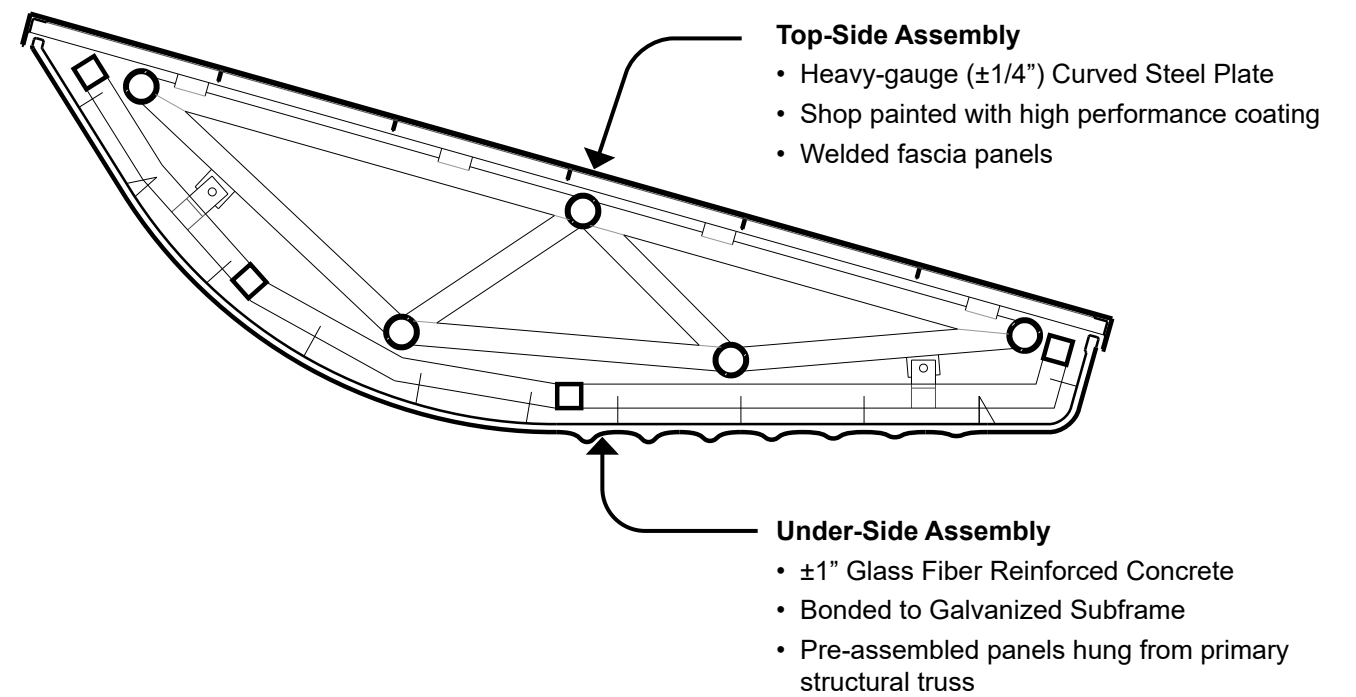
**PDC FINAL REVIEW**  
**EAST RIVER PARK**  
**AMPHITHEATER STRUCTURE**  
MARCH 20, 2023

**View From Esplanade - 'Everyday Use'**  
**Proposed Final Design**

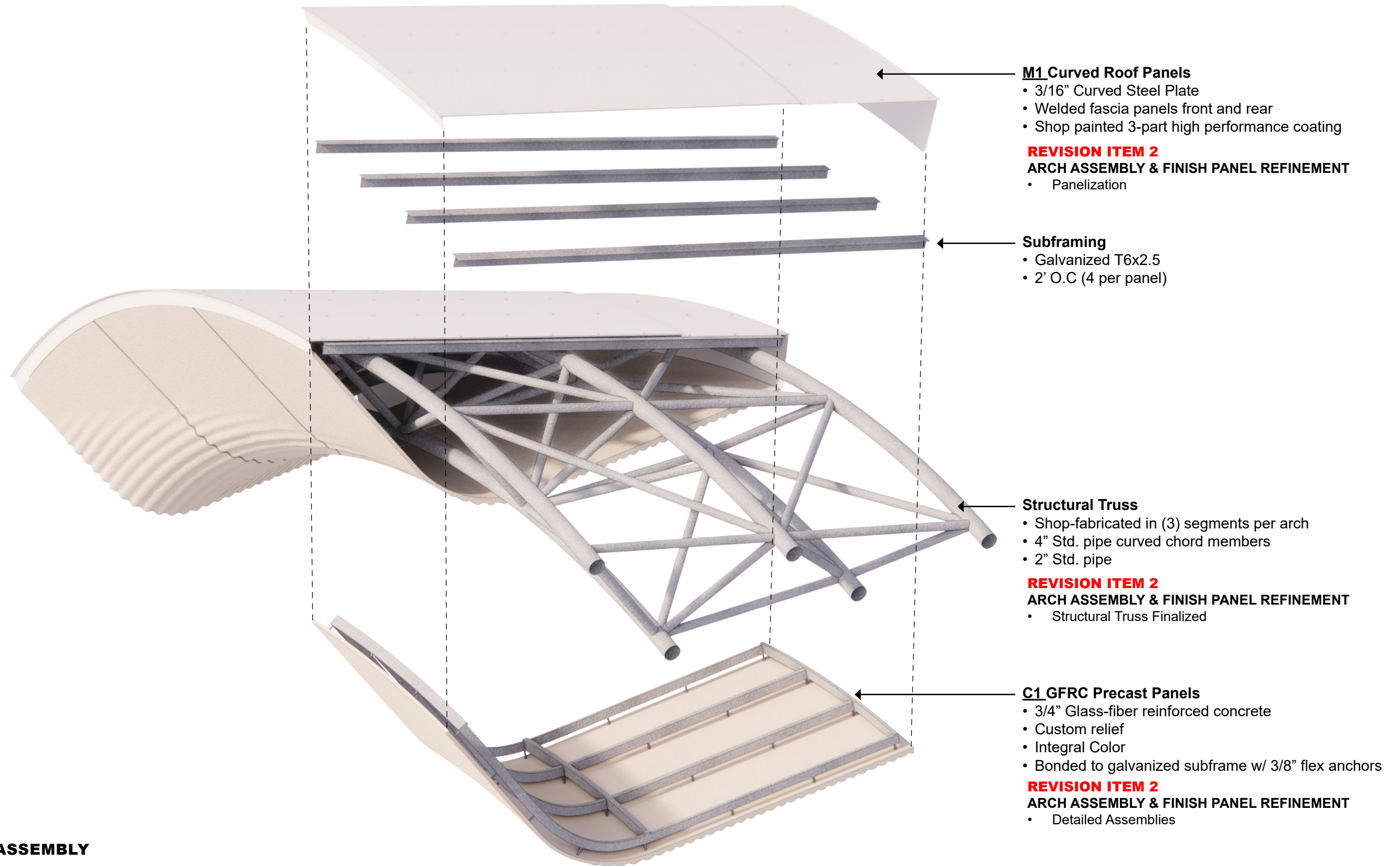




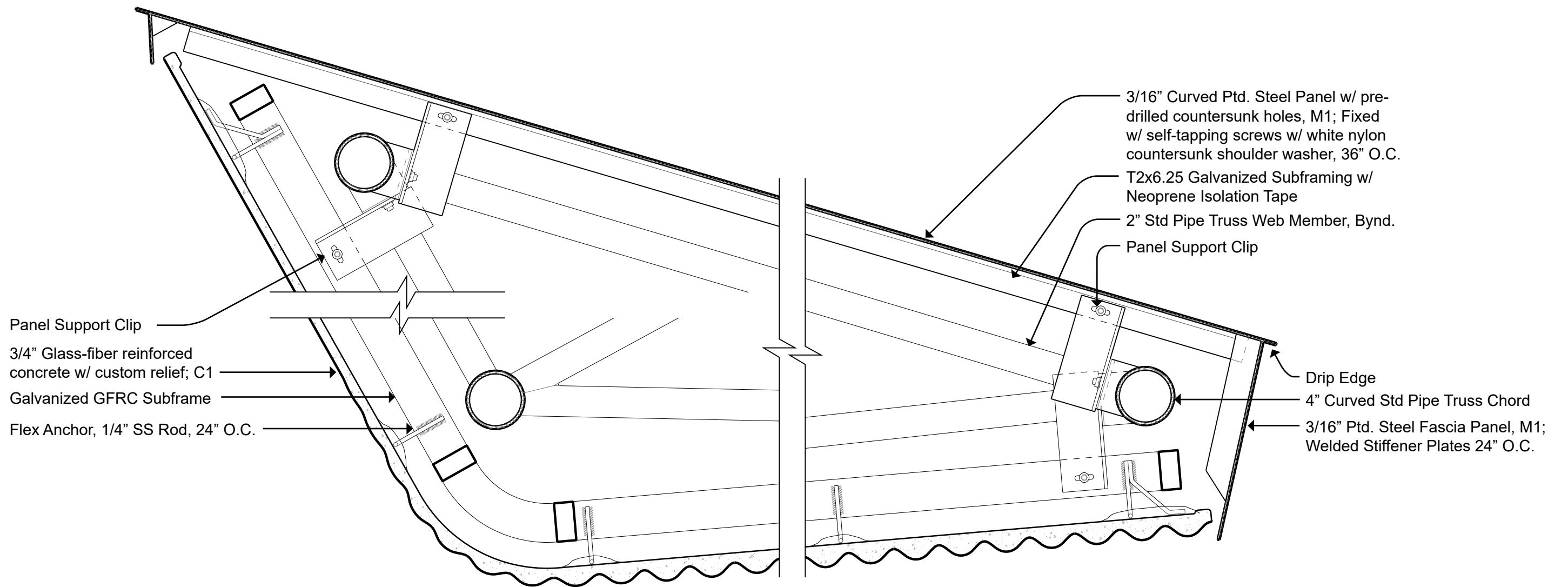
**EXPLODED ARCH ASSEMBLY**



**TYPICAL SECTION**



**EXPLODED ARCH ASSEMBLY**



- REVISION ITEM 2**  
**ARCH ASSEMBLY & FINISH PANEL REFINEMENT**
- Panelization
  - Structural Truss Finalized
  - Detailed Assemblies

**TYPICAL ARCH CROSS SECTION**

0 8"  
 Scale: 1 1/2" = 1'



**GFRC PRE-CAST PANELS**  
INTEGRAL COLOR & CUSTOM RELIEF



**PAINTED STEEL PANELS**  
WHITE HIGH PERFORMANCE COATING

**AMPHITHEATER STRUCTURE MATERIALS**  
(NO CHANGE FROM PRELIMINARY DESIGN)



CONCRETE HEX  
UNIT PAVER



PRECAST CONCRETE  
SEATWALLS

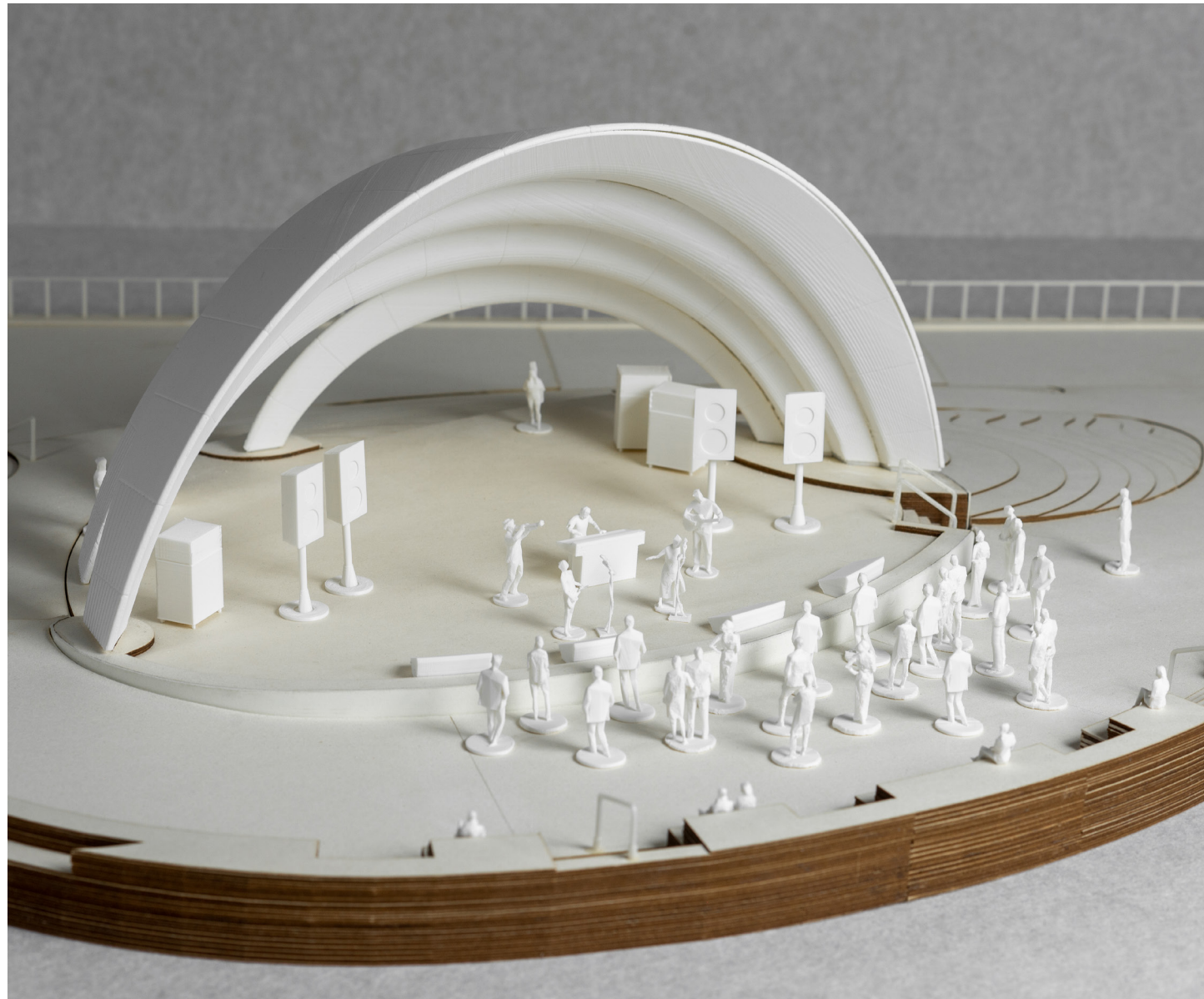


C.I.P. CONCRETE  
SITE WALLS

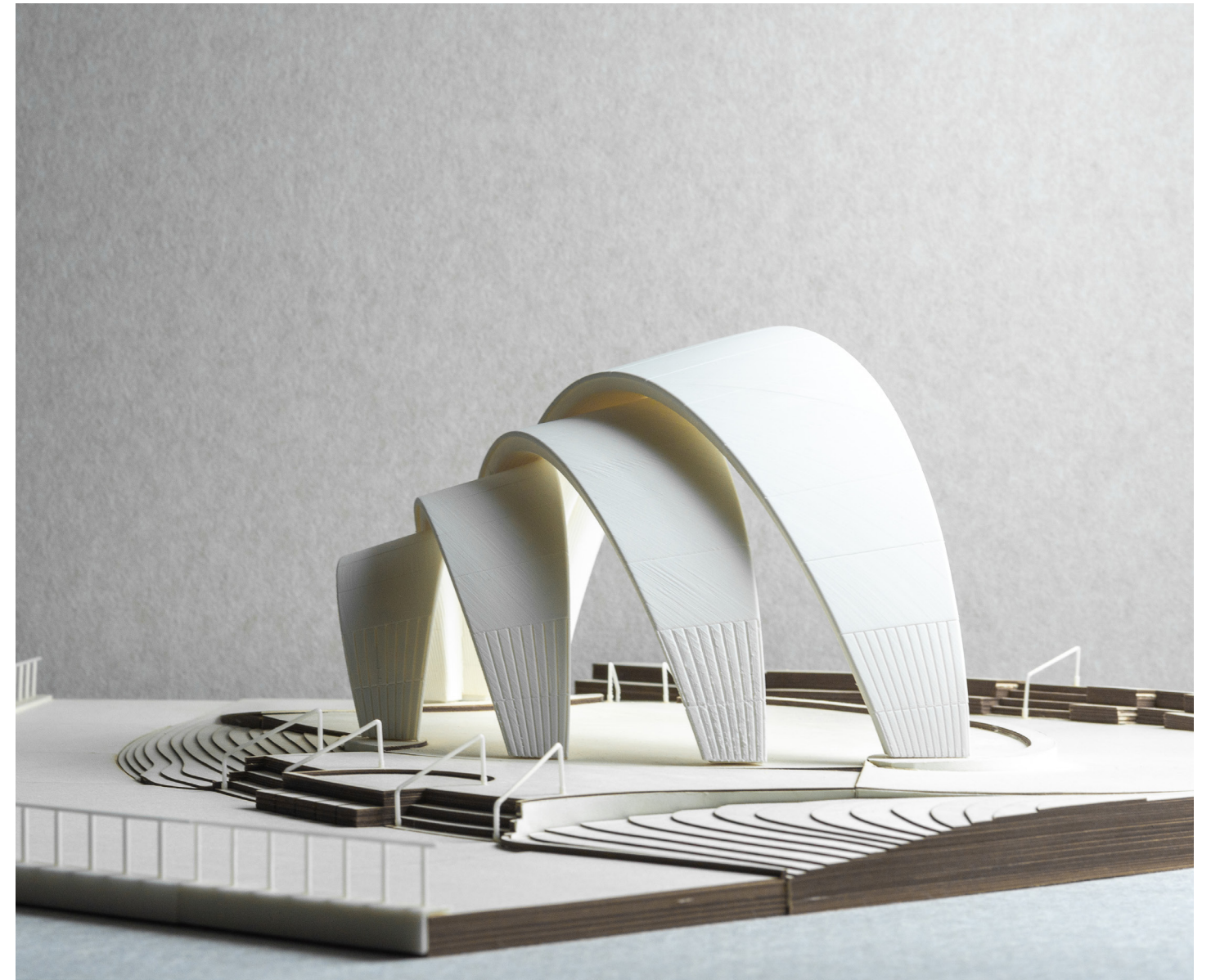


C.I.P. CONCRETE  
STAIRS

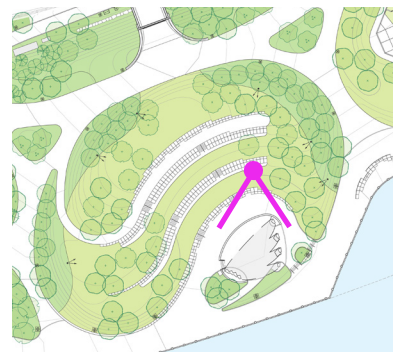
**SITE MATERIALS**  
(FOR REFERENCE, NO CHANGE TO PREVIOUSLY APPROVED PALETTE)



Model Photo: Aerial View of a Small Concert



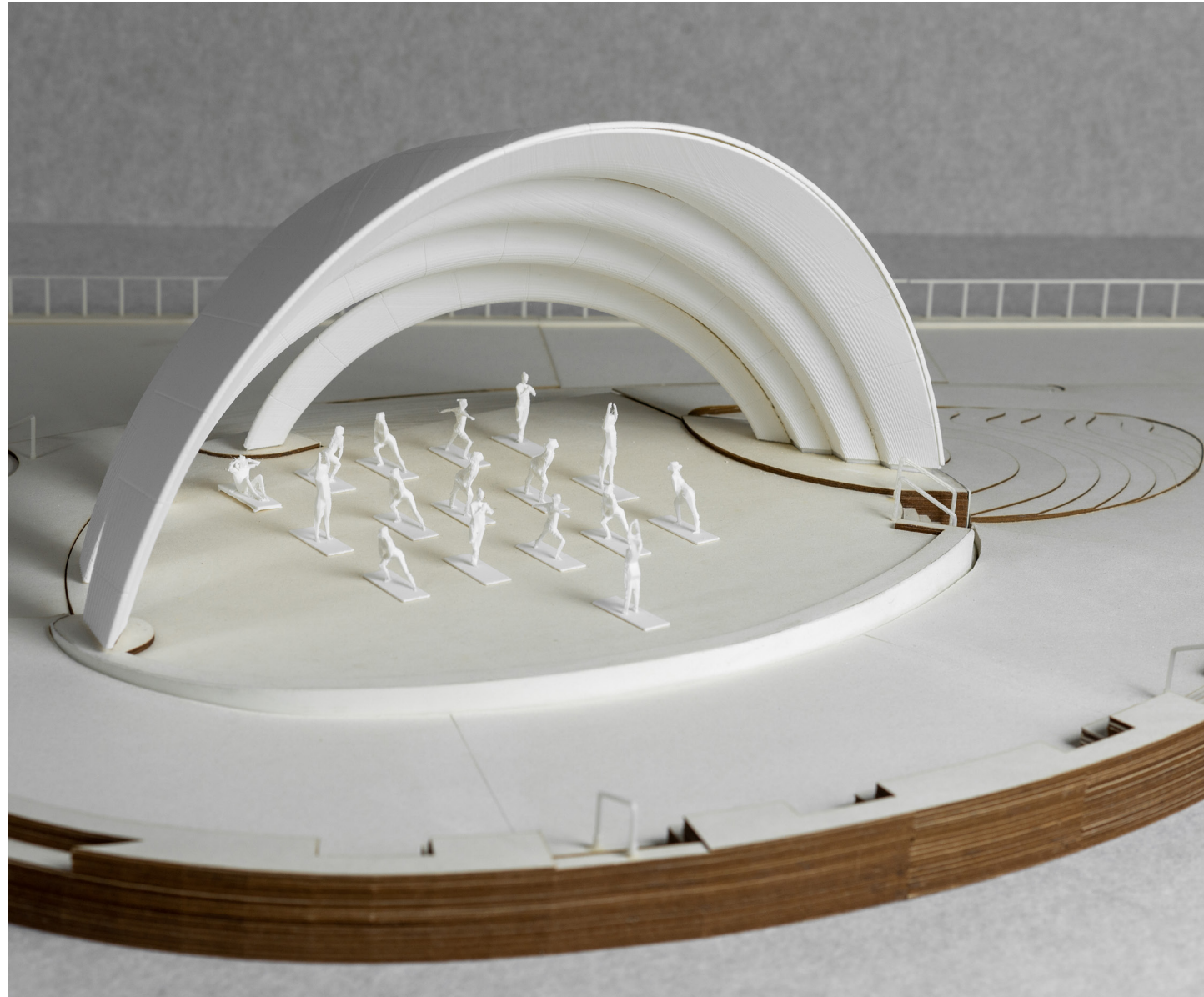
Model Photo: View from North



KEY



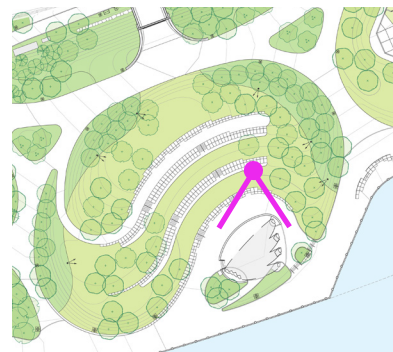
KEY



Model Photo: Aerial View of an Exercise Class Under the Canopy



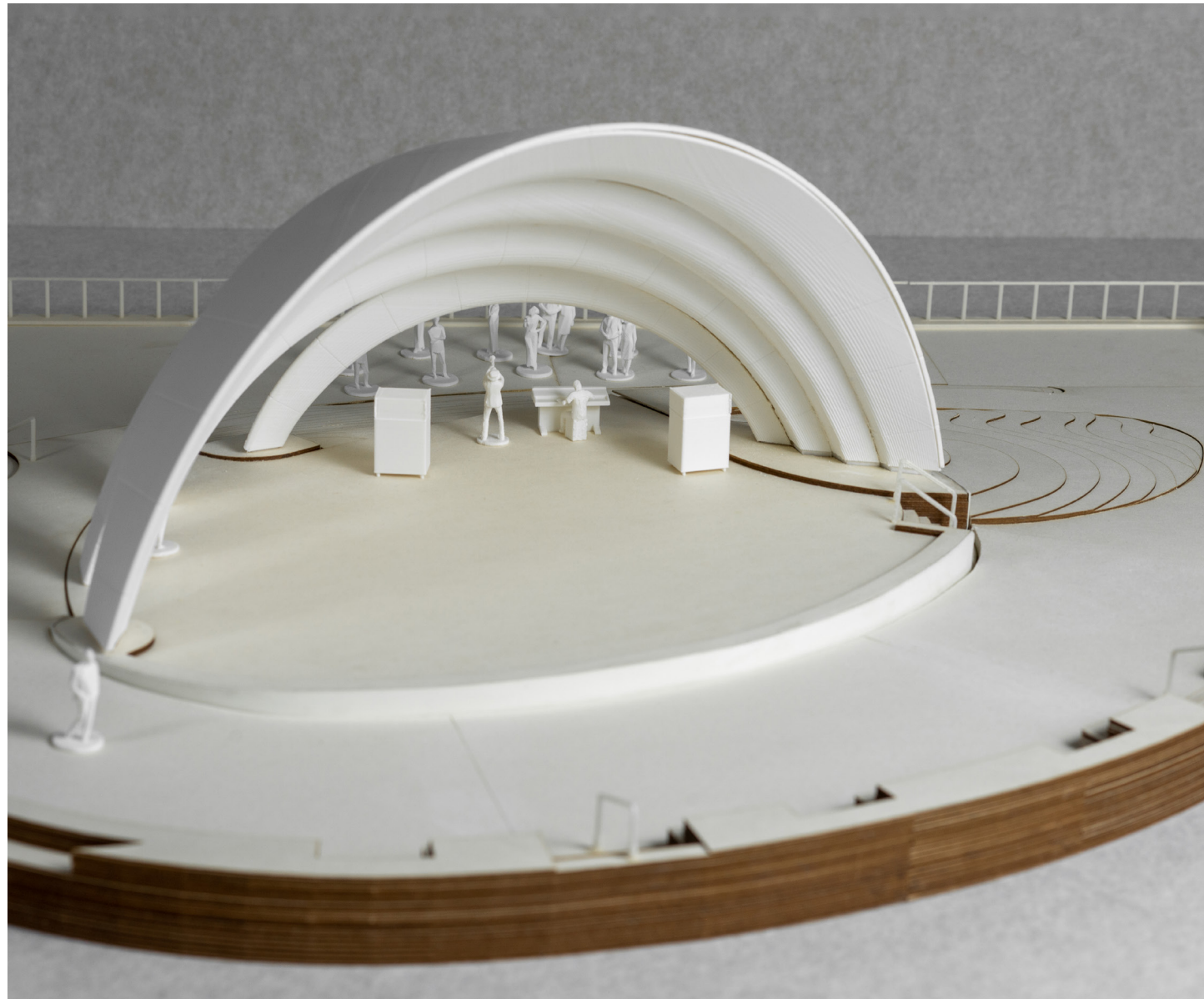
Model Photo: View from East



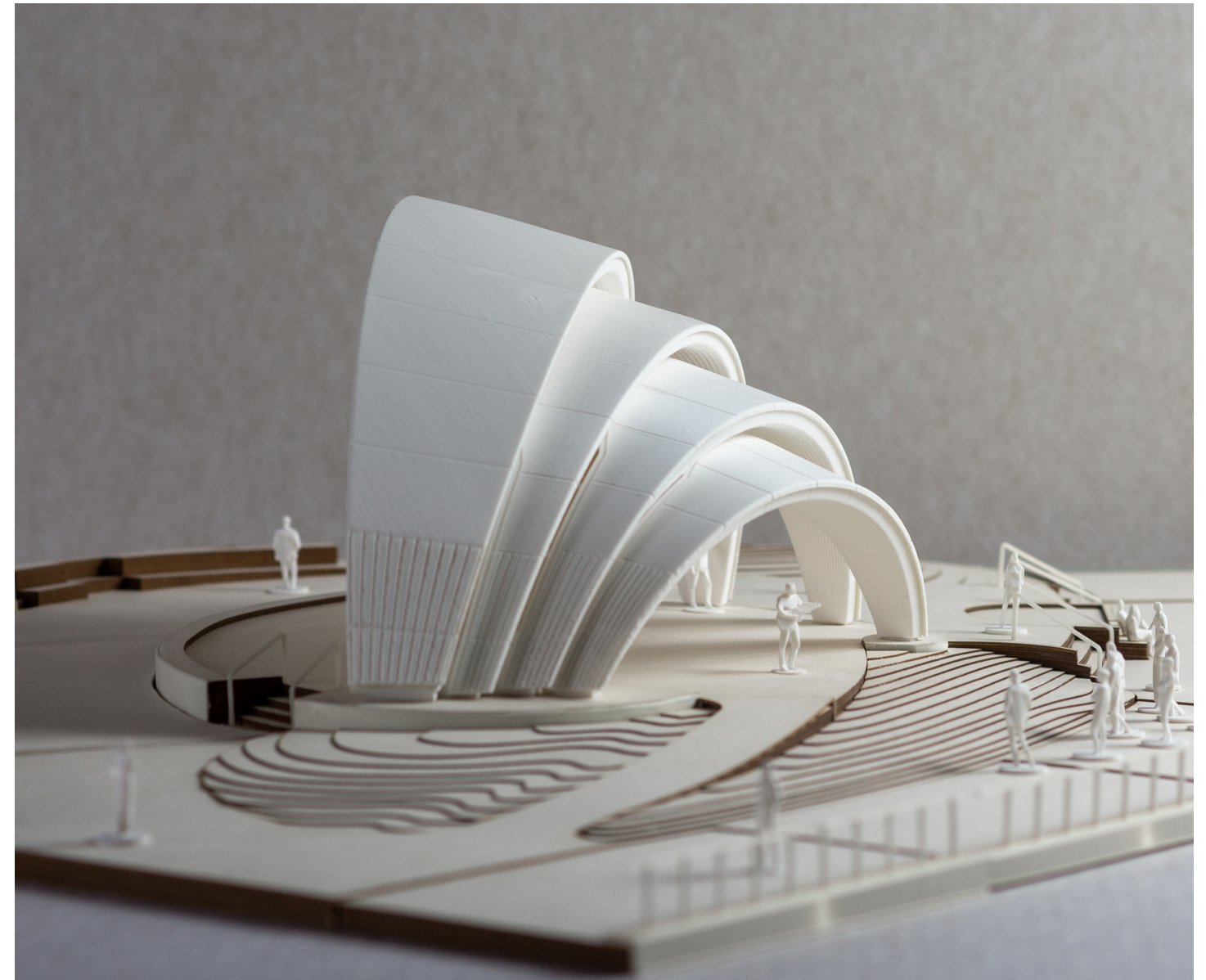
KEY



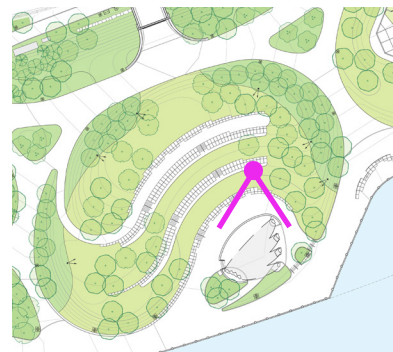
KEY



Model Photo: Aerial View of a Gathering Facing the Esplanade



Model Photo: View from South



KEY



KEY